



FORMATION EVALUATION LOG

RATE OF PENETRATION		INTERPRETED LITHOLOGY	MD meters 1:500	LITHOLOGY	CORE	OIL SHOWS	TOTAL GAS	CHROMATOGRAPH				REMARKS
ROP (0-100m/hr)								Methane ppm				
100	10							1	1	10000		
90	20							1	1	10000		
80	30							1	1	10000		
70	40							1	1	10000		
60	50							1	1	10000		
50	110							1	1	10000		
40	120							1	1	10000		
30	130							1	1	10000		
20	140							1	1	10000		
10	150							1	1	10000		
Backup ROP (100-200m/hr)								1	1	10000		
200	160							1	1	10000		
190	170							1	1	10000		
180	180							1	1	10000		
170	190							1	1	10000		
160	200							1	1	10000		
WOB (klb)								1	1	10000		
5	50							1	1	10000		
10								1	1	10000		
15								1	1	10000		
20								1	1	10000		
25								1	1	10000		
30								1	1	10000		
35								1	1	10000		
40								1	1	10000		
45								1	1	10000		
50								1	1	10000		

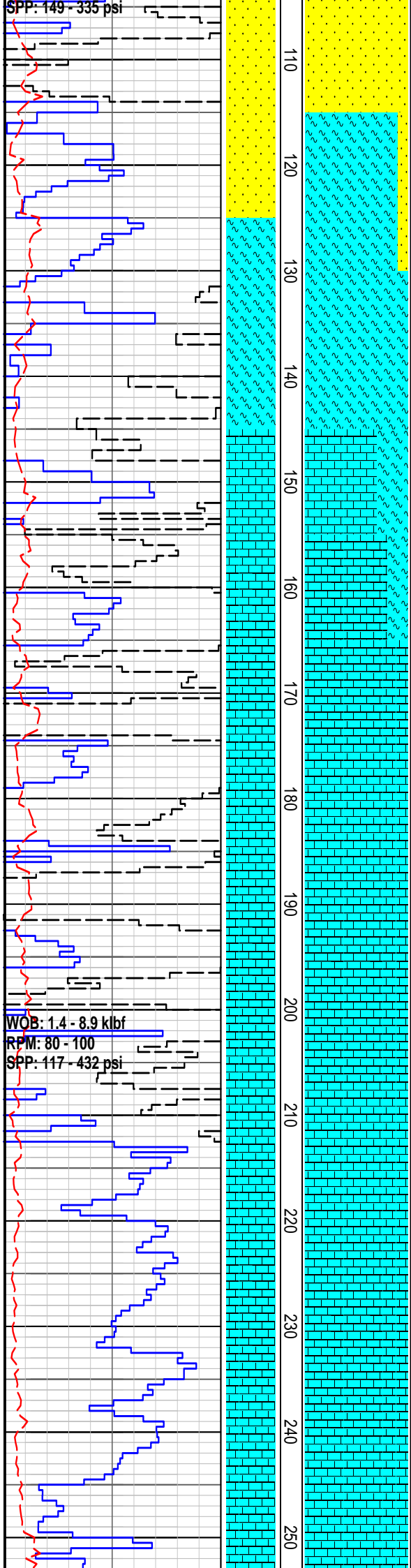
RR1 311mm (12-1/4")
Reed EHP 41KPR
Jets: 3x18
In: 16m Out: 302m
Drilled: 286m in 5.7hrs

WOB: 0.1 - 8.0 klbf
RPM: 80

</

SPP: 149 - 335 psi

WOB: 1.4 - 8.9 kbf
RPM: 80 - 100
SPP: 117 - 432 psi

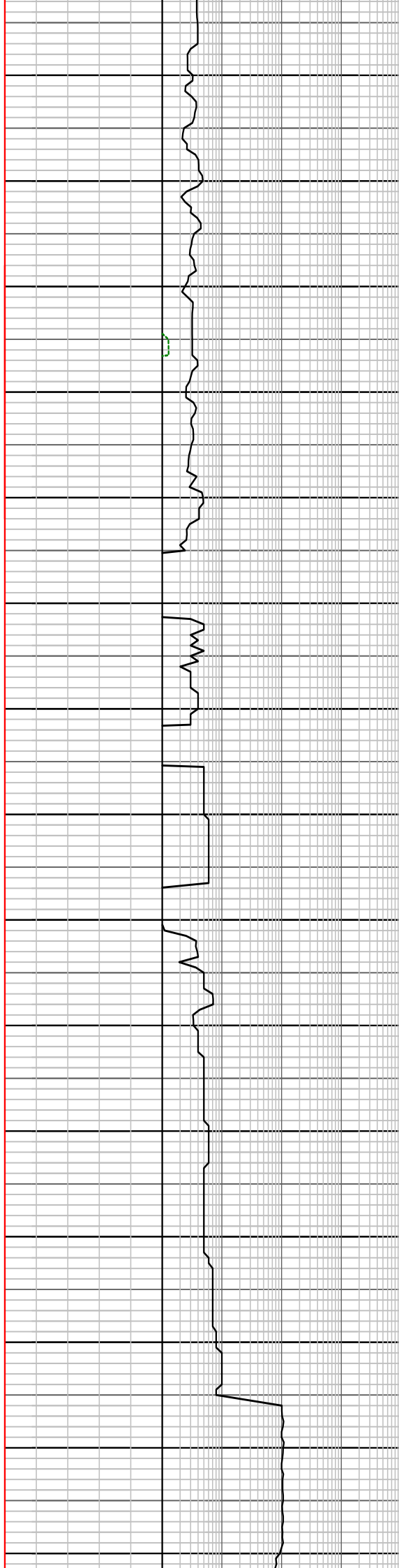
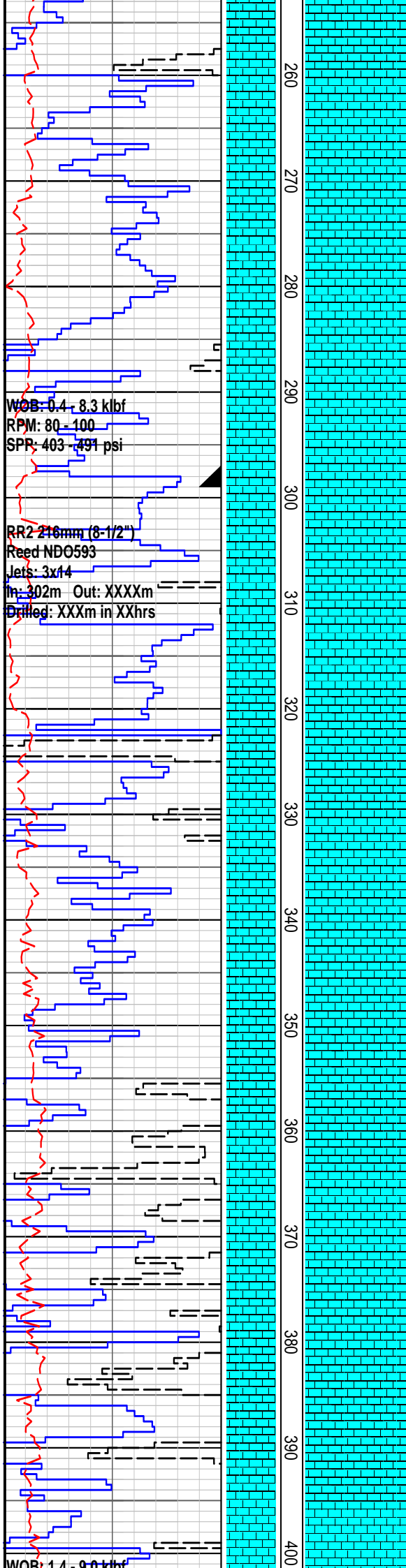


MARL: lt gry-m gry, m gn gry-m brn gry, com-abd foss frags incl bry, shell frags, forams, v sft, v disp, n fiss

CALCARENITE: lt gry-lt brn gry, f-m gr, wk calc cmt, abnt foss frag incl bry, forams, shell frags, mod argill, tr-com vf-f qtz gr, rr m gn glauc, p vis por, n fluor

CALCARENITE: lt gry-lt brn gry, f-m gr, wk calc cmt, abd foss frags incl bry, forams, shell frags, mod argill, tr-com v f-f qtz gr, rr m gn glauc, p vis por, n fluor

CALCARENITE: lt gry-lt brn gry, f-m gr, wk calc cmt, abd foss frags incl bry, forams, shell frags, mod argill, tr-com v f-f qtz gr, rr m gn glauc, p vis por, n fluor

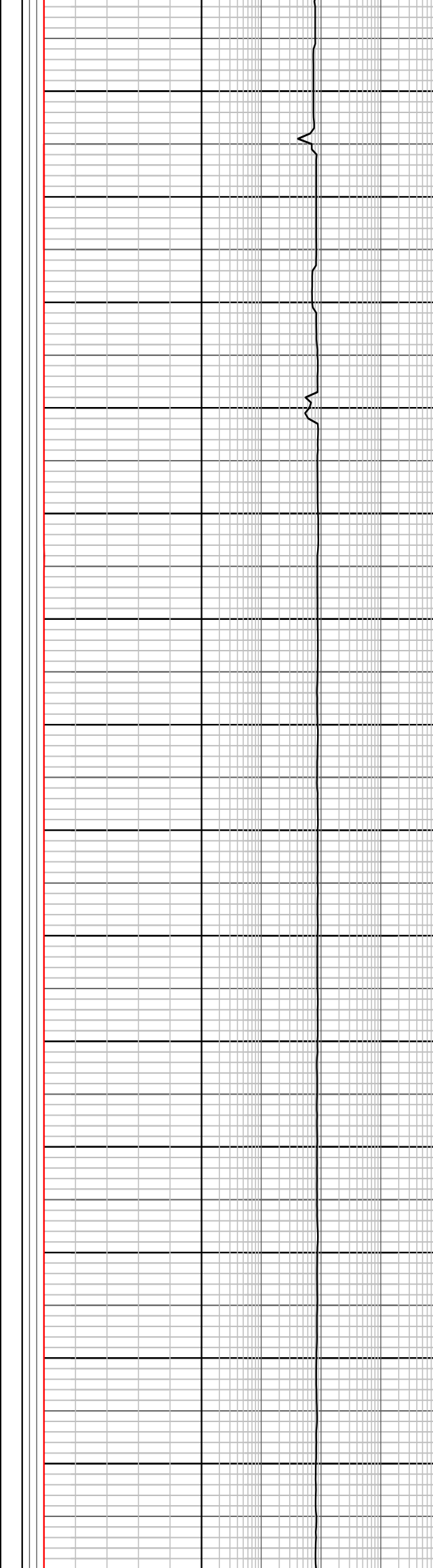
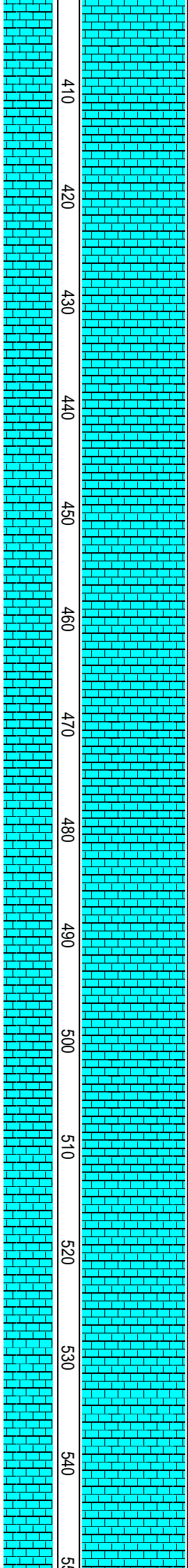
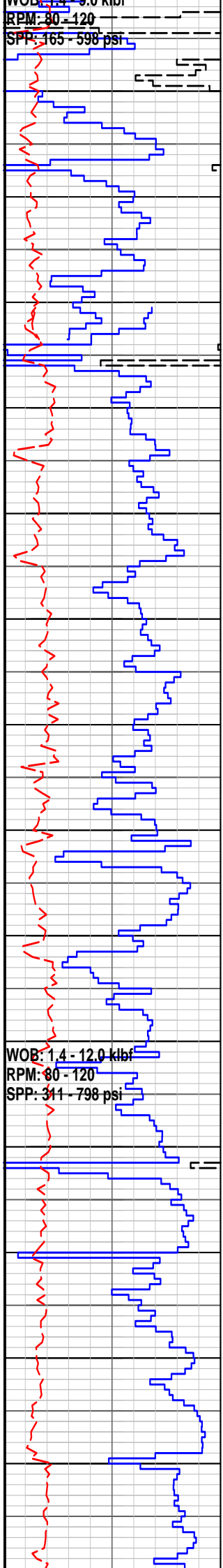


CALCARENITE: lt gry-lt brn gry, rr lt gn gry, f-m gr, wk calc cmt, abd foss frags incl bry, forams, shell frags, sli argill, rr v f-f qtz gr, rr m gn glauc, p vis por, n fluor

244mm (9-5/8") casing shoe at 299mMD

CALCARENITE: lt gry-lt brn gry, rr lt gn gry, f-m gr, wk calc cmt, abd bry, forams, shell frags, mod argill, rr-com v f-f qtz gr, tr gn glauc gn glauc, p vis por, n fluor

CALCARENITE: lt gry-lt brn gry, rr lt gn gry, f-m gr, wk calc cmt, abd bry, forams, shell frags, mod argill, rr v f-f qtz gr, tr gn glauc, p vis por, n fluor

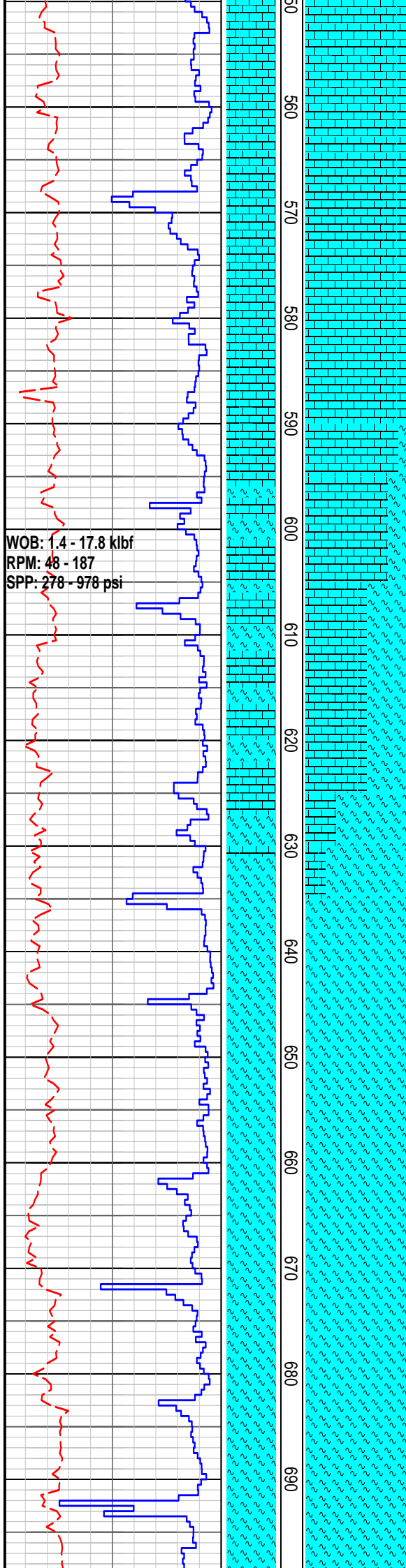


CALCARENITE: off wh-lt m gry-lt brn
gry, f-m gr, wk-mod strong calc cmt,
abd bry, forams, shell frags, mod
argill, rr v f-f qtz gr, tr gn glauc, p vis
por, n fluor

CALCARENITE: off wh-lt m gry-lt brn
gry, f-m gr, wk-mod strong calc cmt,
abd bry, forams, shell frags, n-mod
argill, rr v f-f qtz gr, tr gn glauc, p vis
por, n fluor

Survey at 472m
N25degSE
2 degs

CALCARENITE: off wh-lt m gry-lt brn
gry, f-m gr, wk-mod strong calc cmt,
abd bry, forams, shell frags, mod
argill, rr v f-f qtz gr, tr gn glauc, p vis
por, n fluor



CALCARENITE: off wh-lt m gry-lt brn gry, f-m gr, wk-strong calc cmt, com bry, tr echinoid spines, forams & shell frags, n-mod argill, rr v f-f qtz gr, tr-com gn glauc, fri, v p vis

MARL: m gry-m brn, v calc grd to CLCLT, tr foss frags, sft, stky, n fiss

CALCILUTITE: lt gry-m gry-m lt gry, sli-v argill, grd i/p to MRL, oft v f calcerenitic, grd CLCAR, tr foss frags, sft, stky, n fiss

MARL: v lt-m gry-gn gry-brn gry, v calc grd i/p to off wh argil calc CLCLT tr foss frags, sft, stky, n fiss

Survey at 687m
N86degsE
2 degs

WOB: 5.0 - 14.0 klbf
RPM: 80 - 128
SPP: 278 - 978 psi

WOB: 3.0 - 15.0 klbf
RPM: 50 - 116
SPP: 420 - 940 psi

700
710
720
730
740
750
760
770
780
790
800
810
820
830
840

Run Carbide at 699m
MW: 9.0ppg Vis: 41
Average hole size: 8.90inch

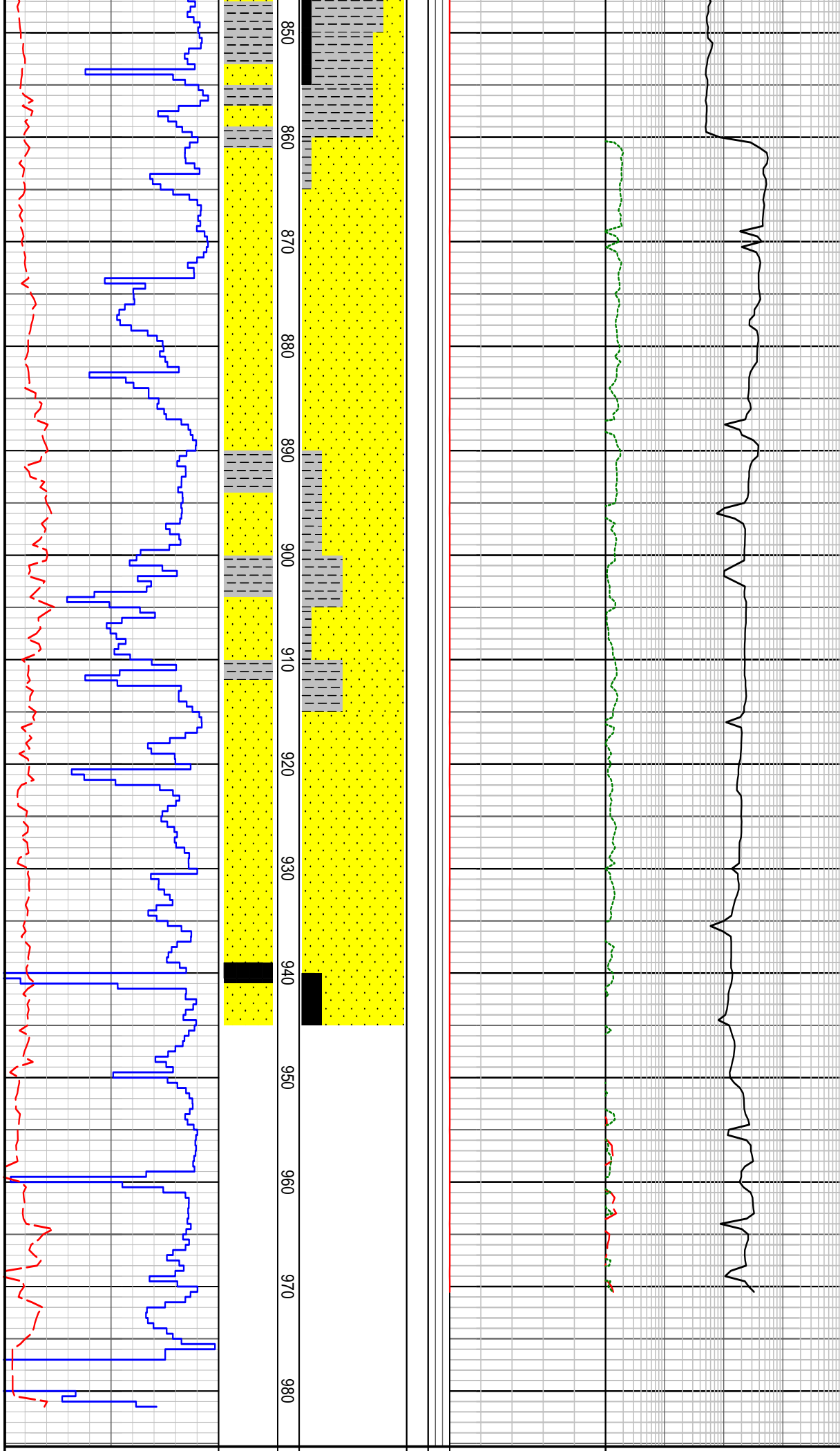
MARL: v lt-m gry-gn gry-brn gry, occ
lt-m brn gry, mod-v calc, tr foss frags,
sft, stky, n fiss

MARL: lt-m gn gry-lt m gry, mod-v
calc, tr foss frags, sft, stky, n fiss

MARL: lt-m gn gry-lt m gry, mod-v
calc, tr foss frags, sft, tr glauc, stky, n
fiss

COAL: m brn-blk, irreg-blky frac, ea
lstr, sli-dom v argil, frm-mod hd

SANDSTONE: lt-m brn, vf-m gr, dom
vf, ang-sbrnd, p-mod srtd, v wk sil
cmt, abd lt brn argil & slt mtrx,
quartzose w/clr-opq qtz gr, tr crs clr
mic flks, tr blk c detr, rr pyr, fri, v p inf
por, n fluor



CLAYSTONE: lt-dk brn, dom m brn, sl
silty and f aren i/p, v sli-mod carb, tr
blk coal flk, tr amber, sft, v disp, n fiss

SANDSTONE: lt brn gry, vf-v crs, dom
m-crs, sbang-rnd, p-mod srtd, wk sil
cmt, tr-com lt brn argill & slt mtrx,
quartzose w/clr-op qtz gr w/mnr brn
stn, tr gr gry & blk cht lit, tr blk c detr,
fri, gd-v gd inf por, n fluor

CLAYSTONE: lt-dk brn, dom m brn, sl
silty and f aren i/p, v sli-mod carb, tr
blk coal flk, tr amber, sft, v disp, n fiss

Survey at 917m
N50degSE
3 degs

SANDSTONE: lt brn gry, vf-v crs, dom
m-crs, sbang-rnd, p srtd, wk sil cmt,
tr-com lt brn argill & slt mtrx,
quartzose w/clr-op qtz gr w/mnr brn
stn, tr gr gry & blk cht lit, tr blk c detr,
fri, gd-v gd inf por, n fluor

FORMATION EVALUATION LOG

RATE OF PENETRATION		MD me	LITHO	CORE	OIL SH	TOTAL GAS	CHROMATOGRAPH		REMARKS
ROP (0-100m/hr)							1	Methane ppm	

[illegible]