



DRILLING DATA LOG



WELL : TREFOIL-2

FROM (m): 2510

TO (m): 3040

SCALE: 1/ 500

Country : AUSTRALIA
 Region : TASMANIA
 Field : TREFOIL
 Permit : T/18P
 Well Type : APPRAISAL
 Rig Name : KAN TAN 4

POSITION
 Latitude : 39 53' 07.93" S
 Longitude : 145 22' 14.62" E
 X (m) : 360690.389
 Y (m) : 5583676.588
 RT-Sealevel (m MSL) : 26
 RT-Seabed (m) : 95

CASING SHOE SIZE / DEPTH
 762mm (30") at (m MDRT) : 153.00
 340mm (13 3/8") at (m MDRT) : 930.00
 245mm (9 5/8") at (m MDRT) : 2520.00

Spud Date : 06-10-2009
 Total Depth Date :
 Total Depth (m MDRT) :
 Total Depth (m TVSS) :
 Status :

ABBREVIATIONS

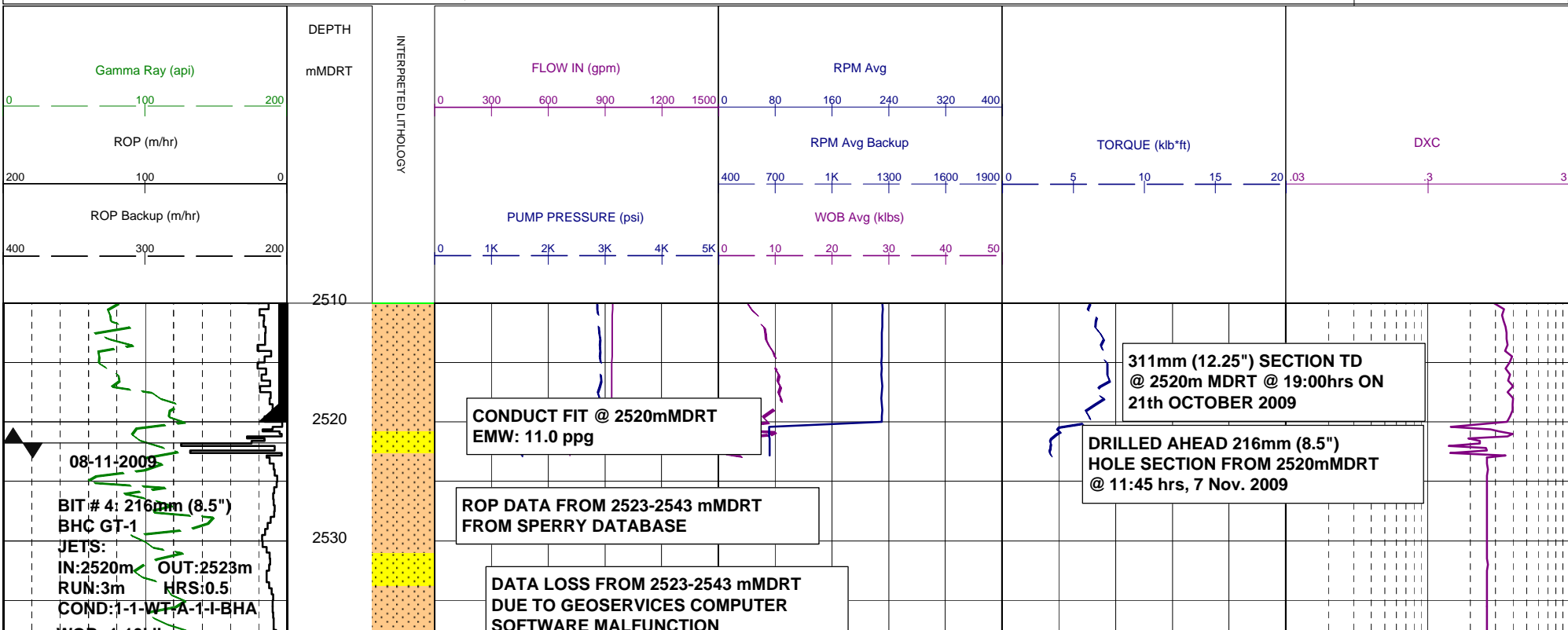
| | |
|-----------------------|---------------------|
| MW MUD WEIGHT | NB NEW BIT |
| FV FUNNEL VISCOSITY | RR RERUN BIT |
| PV PLASTIC VISCOSITY | CB CORE BIT |
| YP YIELD POINT | WOB WEIGHT ON BIT |
| FC FILTER CAKE | RPM REVS PER MINUTE |
| SOL SOLIDS | FLC FLOW CHECK |
| CR CIRCULATE RETURNS | WL FILTRATE |
| SD SAND - % | PR POOR RETURNS |
| S SALINITY - PPM | NR NO RETURNS |
| RM MUD RESISTIVITY | BG BACKGROUND GAS |
| RMF MUD FILTRATE | TG TRIP GAS |
| C CARBIDE TEST | STG SHORT TRIP GAS |
| LAT LOGGED AFTER TRIP | CG CONNECTION GAS |
| DS DEVIATION SURVEY | SG SWAB GAS |
| | SVG SURVEY GAS |

LITHOLOGY LEGEND

| | | | |
|----------------------|---------------------|----------------------|---------------|
| Dolomite | Claystone | Argil Siltstone | Calcareous |
| Calcurudite | Siltstone | Sandy Siltstone | Dolomitic |
| Calcarenite | Sandstone | Calcareous Siltstone | Fossils |
| Calcsiltite | Coal | Argil Sandstone | Foraminiferae |
| Calclutite | Intrusive Volcanics | Calcareous Sandstone | Carbonaceous |
| Sandy Claystone | Volcaniclastics | Dolomitic Sandstone | Chert |
| Silty Claystone | Tuff | Silty Sandstone | Pyrite |
| Calcareous Claystone | Cement | | Glauconite |
| Argil Calclutite | | | Mica |

ENGINEERING

| |
|------------------|
| Test |
| FIT or LOT |
| Mud loss |
| Mud gain |
| Deviation survey |
| Core |
| Shoe |
| Calciometry |



WOB: 1-10kibs
RPM: 70-72
GPM: 714-729
SPP: 1523-1617psi

MW: 9.35 FV: 47
PV/YP: 12/30
FC: 1/2
SOL: 3.2 SAND: 0.25
CL: 43,000 mg/l

BIT # 5: 216mm (8.5")
SMITH PDC M1616VBPX
JETS: 6x14
IN: 2523m OUT: 2633m
RUN: 110m HRS: 5.5
COND: 0.1 WT-G-X-I-NO-DF

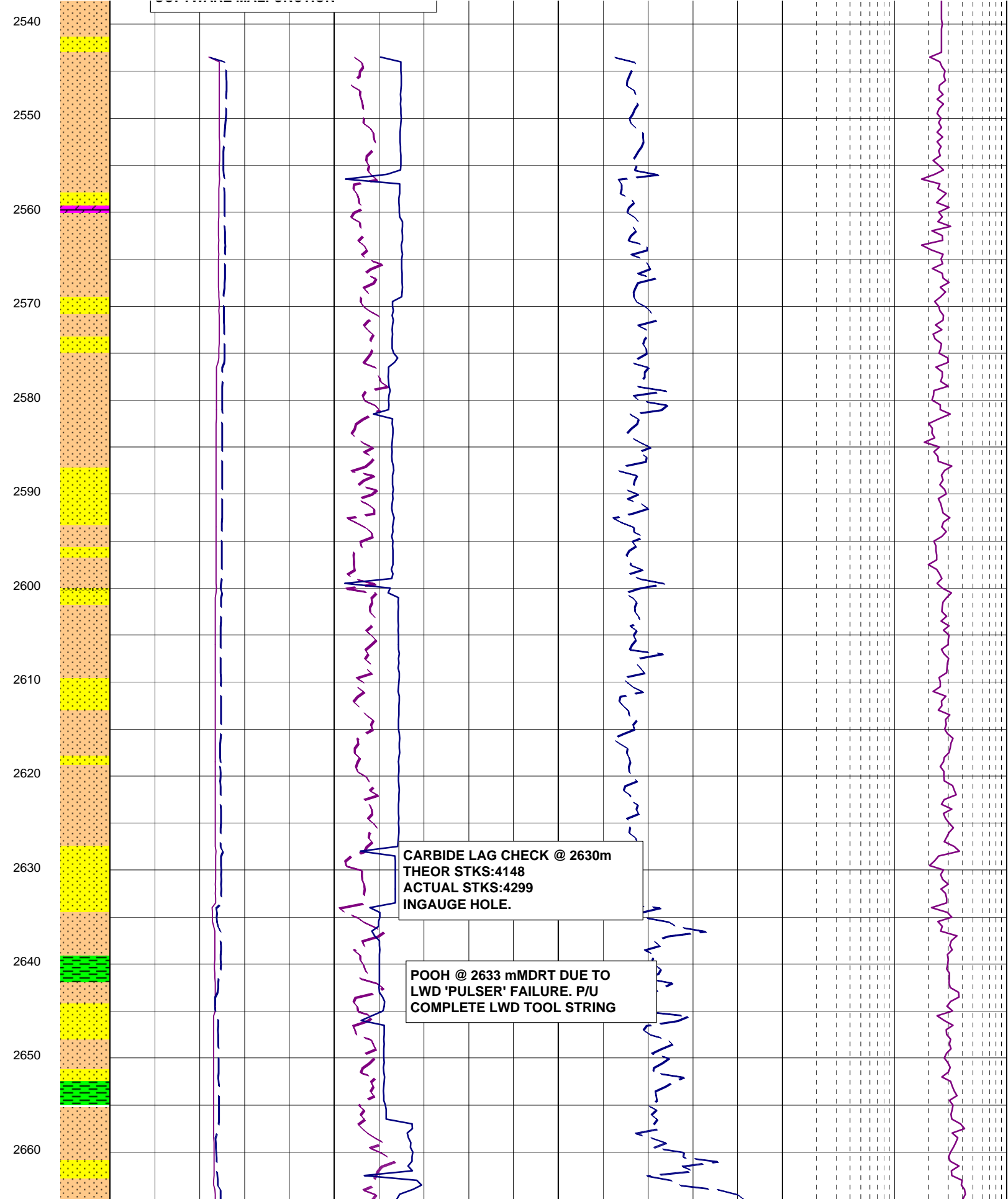
WOB: 2-3kibs
RPM: 19-112
GPM: 704-735
SPP: 2448-2571psi

09-11-2009

10-11-2009
BIT # 5RR1: 216mm (8.5")
SMITH PDC M1616VBPX
JETS: 6x14
IN: 2633m OUT: 2983m
RUN: 349m HRS: 22.17
COND: 1-2-CT-S-X-I-WT-CP
WOB: 1-16kibs

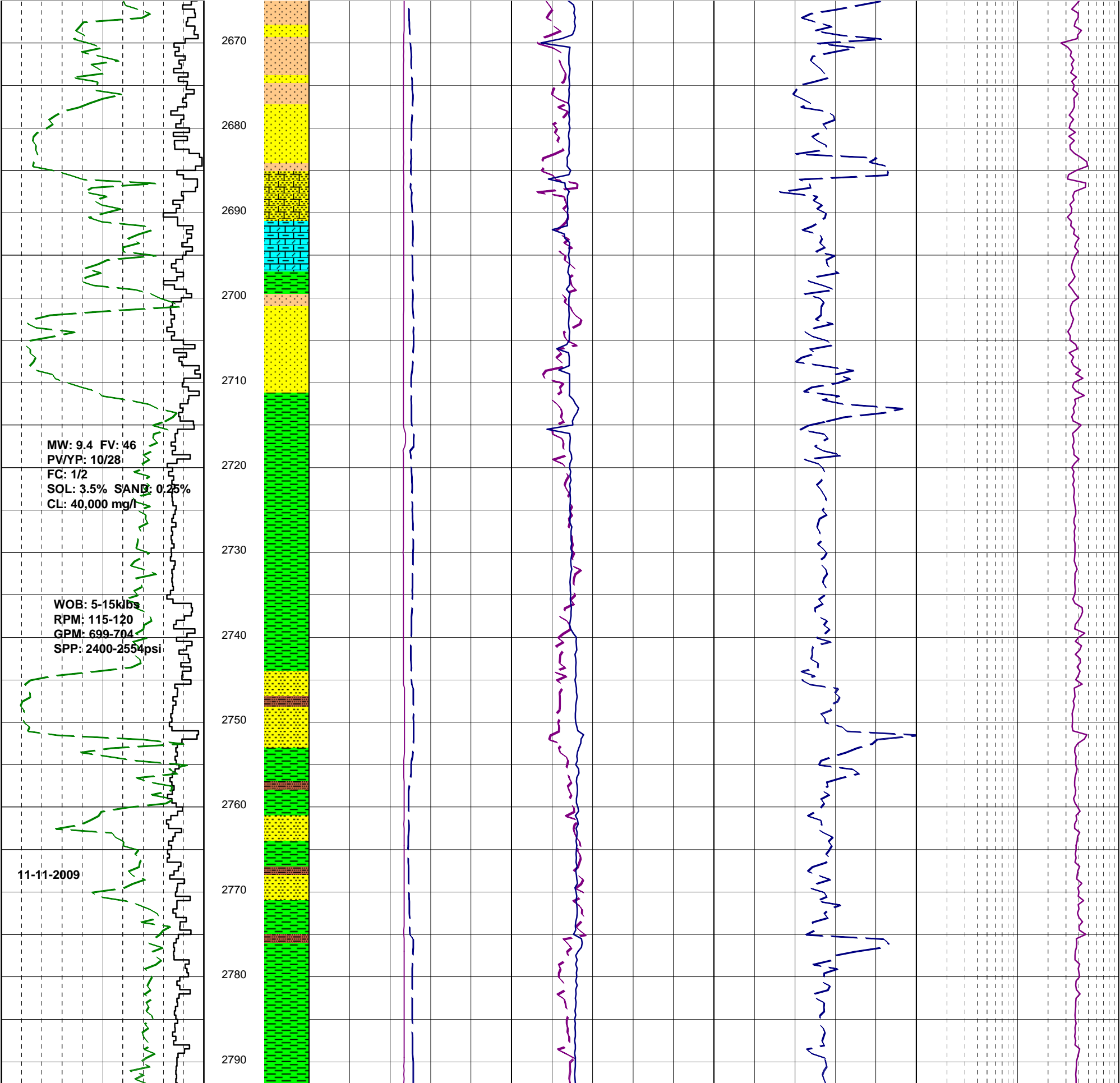
RPM: 46-156
GPM: 684-712
SPP: 2328-2554psi

MW: 9.4 FV: 68
PV/YP: 11/26
FC: 1/2
SOL: 3.3% SAND: 0.25%
CL: 41,500 mg/l



CARBIDE LAG CHECK @ 2630m
THEOR STKS:4148
ACTUAL STKS:4299
INGAUGE HOLE.

POOH @ 2633 mMDRT DUE TO
LWD 'PULSER' FAILURE. P/U
COMPLETE LWD TOOL STRING



MW: 9.4 EV: 46
PV/YP: 10/25
FC: 1/2
SOL: 3.3% SAND: 0.25%
CL: 41,000 mg/l

