

DRILLING DATA LOG

WELL : TREFOIL-2

FROM (m): 2510

TO (m): 2870

SCALE: 1/ 500

Country : AUSTRALIA
 Region : TASMANIA
 Field : TREFOIL
 Permit : T/18P
 Well Type : APPRAISAL
 Rig Name : KAN TAN 4

POSITION
 Latitude : 39 53' 07.93" S
 Longitude : 145 22' 14.62" E
 X (m) : 360690.389
 Y (m) : 5583676.588
 RT-Sealevel (m MSL) : 26
 RT-Seabed (m) : 95

CASING SHOE SIZE / DEPTH
 762mm (30") at (m MDRT) : 153.00
 340mm (13 3/8") at (m MDRT) : 930.00
 245mm (9 5/8") at (m MDRT) : 2520.00

Spud Date : 06-10-2009
 Total Depth Date :
 Total Depth (m MDRT) :
 Total Depth (m TVSS) :
 Status :

ABBREVIATIONS

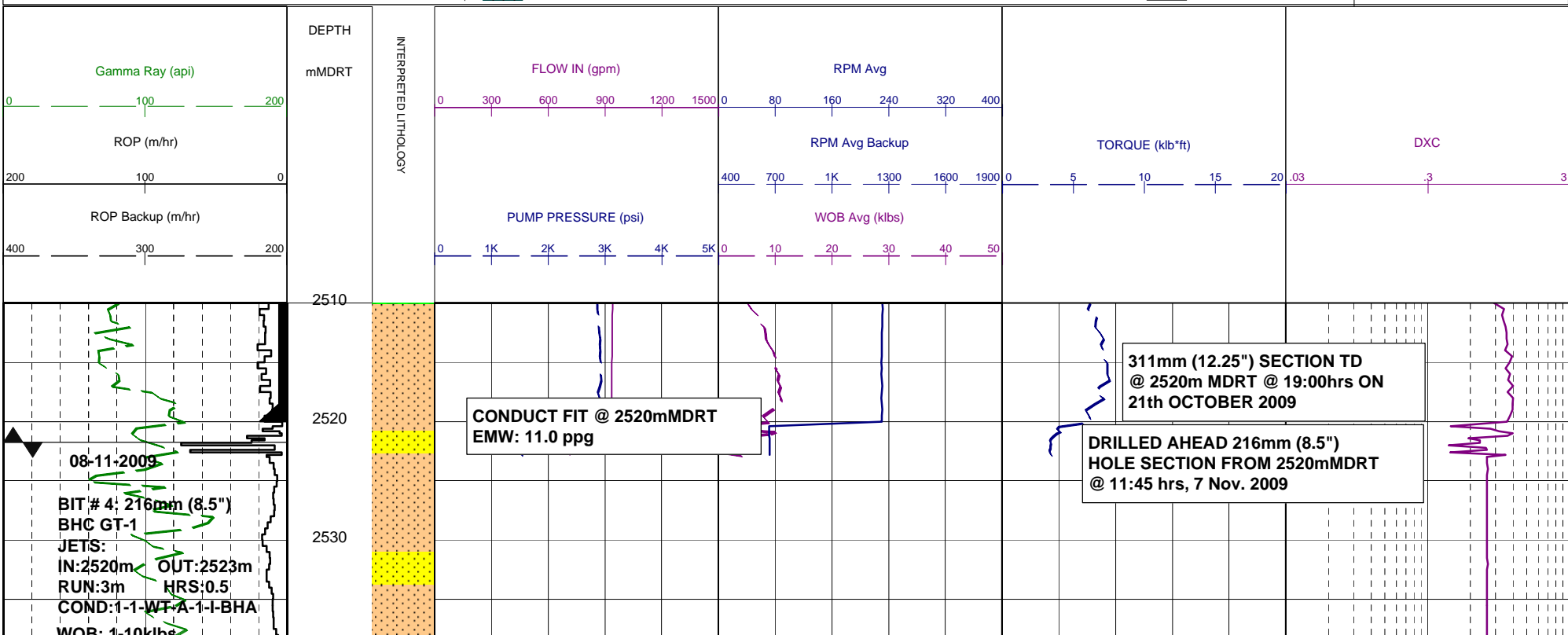
MW MUD WEIGHT	NB NEW BIT
FV FUNNEL VISCOSITY	RR RERUN BIT
PV PLASTIC VISCOSITY	CB CORE BIT
YP YIELD POINT	WOB WEIGHT ON BIT
FC FILTER CAKE	RPM REVS PER MINUTE
SOL SOLIDS	FLC FLOW CHECK
CR CIRCULATE RETURNS	WL FILTRATE
SD SAND - %	PR POOR RETURNS
S SALINITY - PPM	NR NO RETURNS
RM MUD RESISTIVITY	BG BACKGROUND GAS
RMF MUD FILTRATE	TG TRIP GAS
C CARBIDE TEST	STG SHORT TRIP GAS
LAT LOGGED AFTER TRIP	CG CONNECTION GAS
DS DEVIATION SURVEY	SG SWAB GAS
	SVG SURVEY GAS

LITHOLOGY LEGEND

	Dolomite		Claystone		Argil Siltstone		Calcareous
	Calcluridite		Siltstone		Sandy Siltstone		Dolomitic
	Calcarenite		Sandstone		Calcareous Siltstone		Fossils
	Calcsiltite		Coal		Argil Sandstone		Foraminiferae
	Calclutite		Intrusive Volcanics		Calcareous Sandstone		Carbonaceous
	Sandy Claystone		Volcaniclastics		Dolomitic Sandstone		Chert
	Silty Claystone		Tuff		Silty Sandstone		Pyrite
	Calcareous Claystone		Cement				Glauconite
	Argil Calclutite						Mica

ENGINEERING

	Test
	FIT or LOT
	Mud loss
	Mud gain
	Deviation survey
	Core
	Shoe
	Calcimetry



WOB: 70-72
RPM: 70-72
GPM: 744-729
SPP: 1523-1617psi

MW: 9.35 FV: 47
PV/YP: 12/30
FC: 1/2
SOL: 3.2 SAND: 0.25
CL: 43,000 mg/l

BIT # 5: 216mm (8.5")
SMITH-PDC M1616VBPX
JETS: 6x14
IN: 2523m OUT: 2633m
RUN: 110m HRS: 5.5
COND: 0.1-WT-G-X-I-NO-BIT

WOB: 2-3klbs
RPM: 19-112
GPM: 704-735
SPP: 2448-2571psi

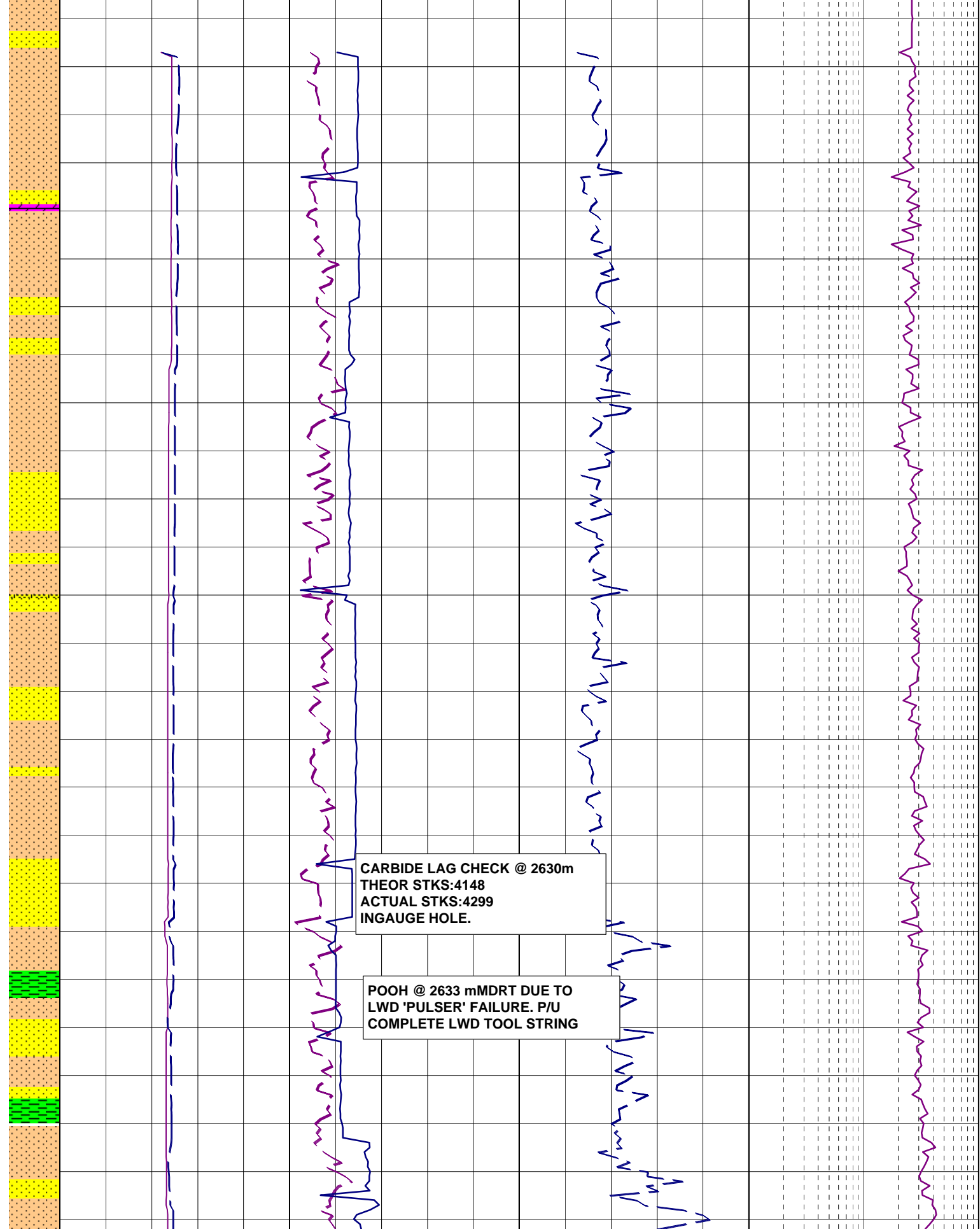
09-11-2009

BIT # 5RR1: 216mm (8.5")
SMITH-PDC M1616VBPX
JETS: 6x14
IN: 2633m OUT: XXXXm
RUN: XXXm HRS: X.X
COND:

10-11-2009

MW: 9.4 FV: 68
PV/YP: 11/26
WOB: 1216klbs
RPM: 46-156
GPM: 485-500
SPP: 2328-2554psi

2540
2550
2560
2570
2580
2590
2600
2610
2620
2630
2640
2650
2660



CARBIDE LAG CHECK @ 2630m
THEOR STKS:4148
ACTUAL STKS:4299
INGAUGE HOLE.

POOH @ 2633 mMDRT DUE TO
LWD 'PULSER' FAILURE. P/U
COMPLETE LWD TOOL STRING

