



FORMATION EVALUATION LOG

WELL : TREFOIL-2



FROM (m): 900

TO (m): 2090

SCALE: 1/ 500

Country : : AUSTRALIA
Region : : TASMANIA
Field : : TREFOIL
Permit : : T/18P
Well Type : : APPRAISAL
Rig Name : : KAN TAN 4

POSITION
Latitude : : 39 53' 07.93" S
Longitude : : 145 22' 14.62" E
X (m) : : 360690.389
Y (m) : : 5583676.588
RT-Sealevel (m MSL) : : 26
RT-Seabed (m) : : 95

CASING SHOE SIZE / DEPTH
762mm (30") at (m MDRT) : : 153.00
340mm (13 3/8") at (m MDRT) : : 930.00
245mm (9 5/8") at (m MDRT) : :

Spud Date : : 06-10-2009
Total Depth Date : :
Total Depth (m MDRT) : :
Total Depth (m TVSS) : :
Status : :

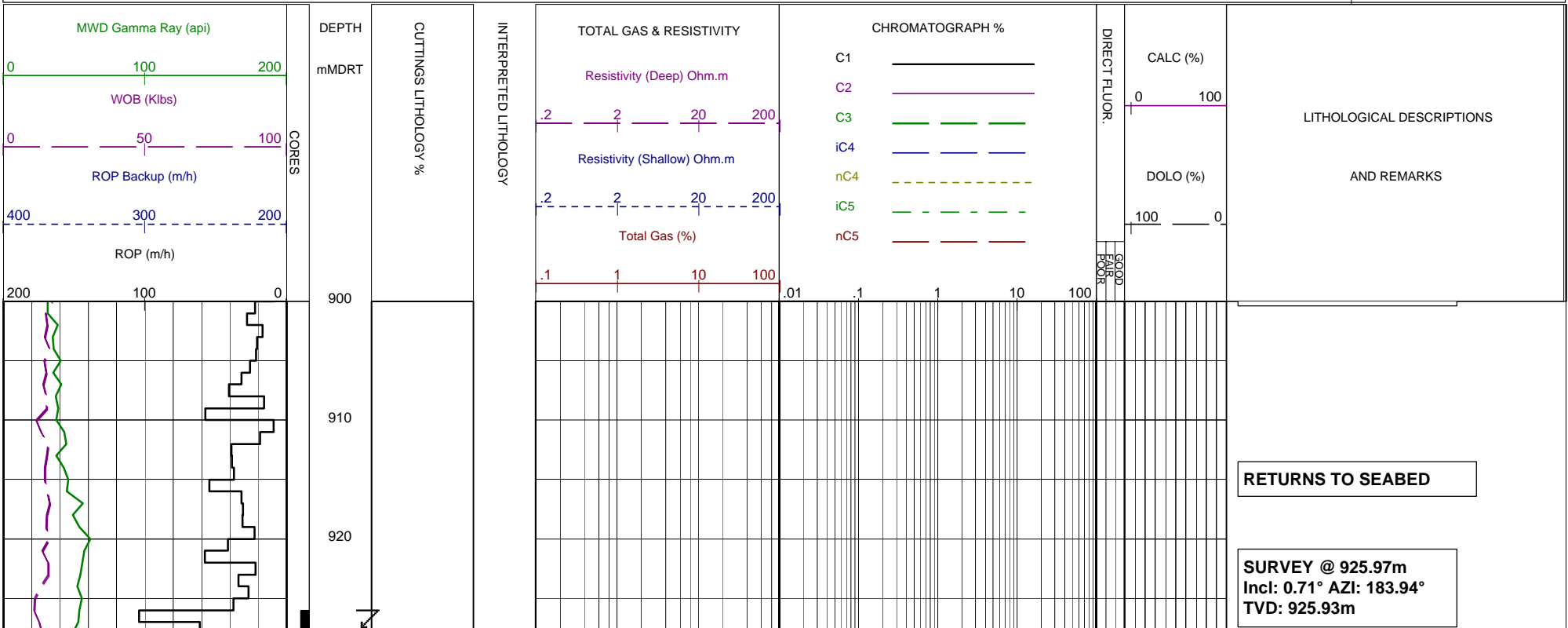
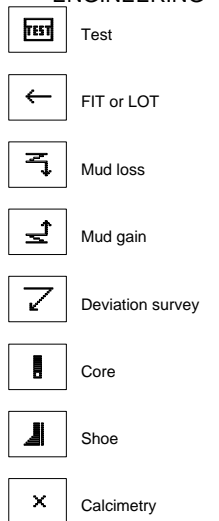
ABBREVIATIONS

MW MUD WEIGHT
FV FUNNEL VISCOSITY
PV PLASTIC VISCOSITY
YP YIELD POINT
FC FILTER CAKE
SOL SOLIDS
CR CIRCULATE RETURNS
SD SAND - %
S SALINITY - PPM
RM MUD RESISTIVITY
RMF MUD FILTRATE
C CARBIDE TEST
LAT LOGGED AFTER TRIP
DS DEVIATION SURVEY
NB NEW BIT
RR RERUN BIT
CB CORE BIT
WOB WEIGHT ON BIT
RPM REVS PER MINUTE
FLC FLOW CHECK
WL FILTRATE
PR POOR RETURNS
NR NO RETURNS
BG BACKGROUND GAS
TG TRIP GAS
STG SHORT TRIP GAS
CG CONNECTION GAS
SG SWAB GAS
SVG SURVEY GAS

LITHOLOGY LEGEND



ENGINEERING

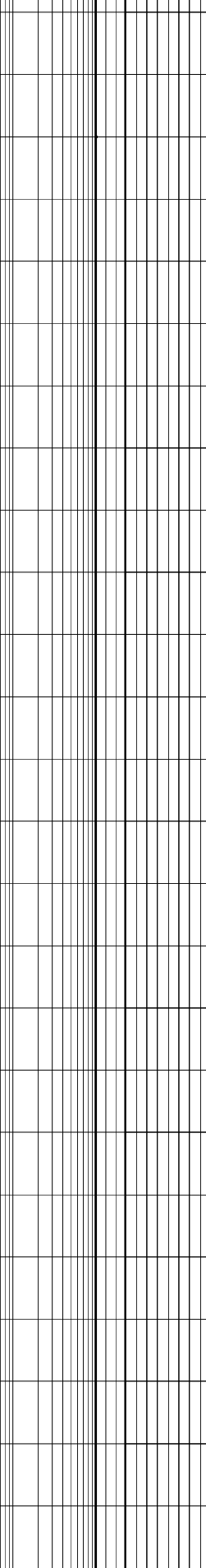
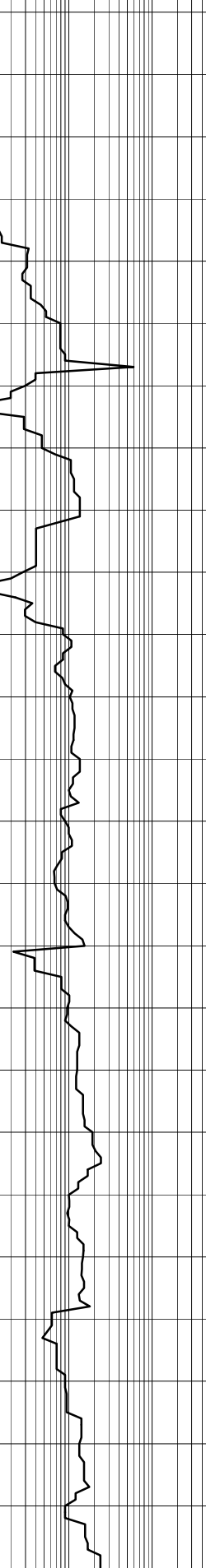
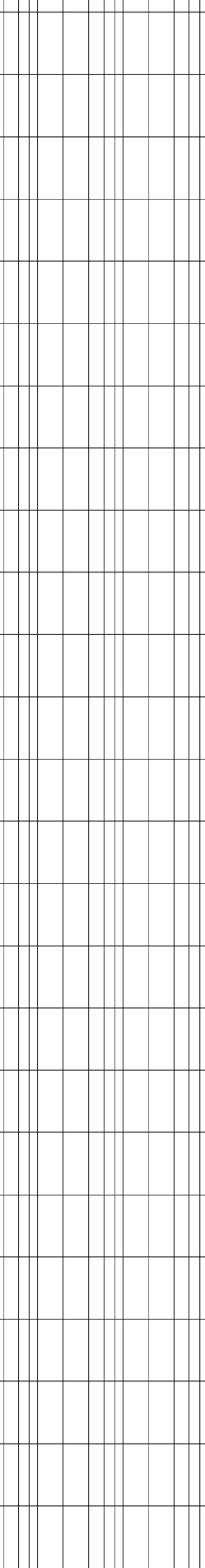
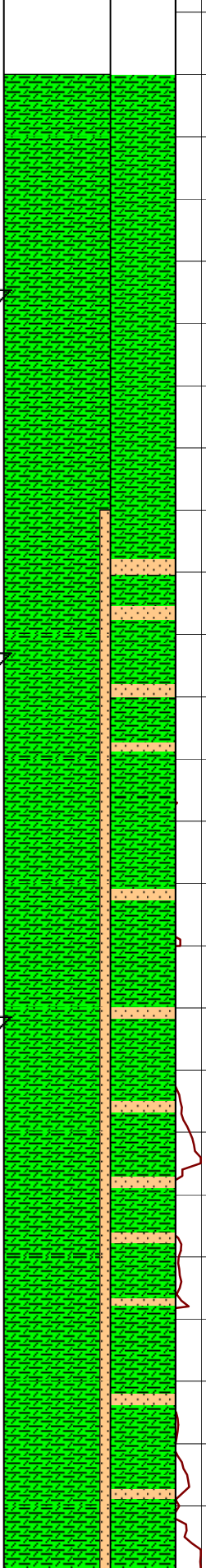
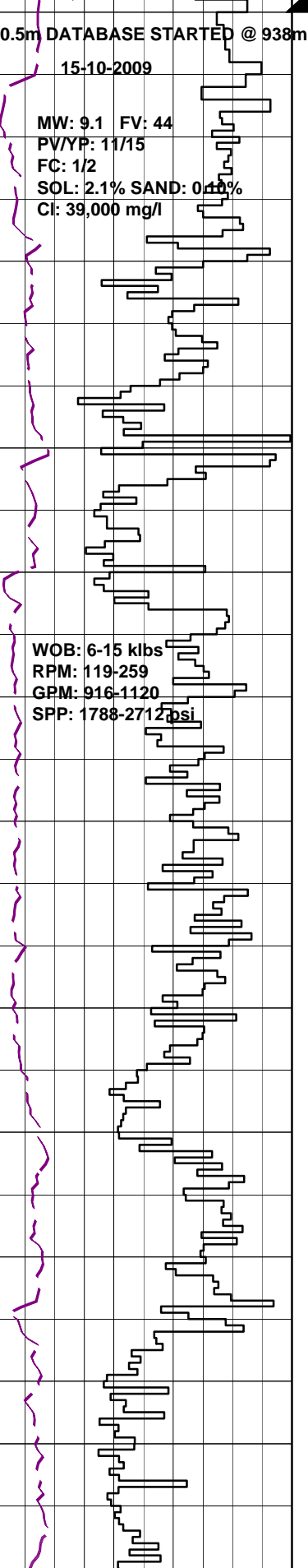


0.5m DATABASE STARTED @ 938m
15-10-2009

MW: 9.1 FV: 44
PV/YP: 11/15
FC: 1/2
SOL: 2.1% SAND: 0.40%
Cl: 39,000 mg/l

WOB: 6-15 klbs
RPM: 119-259
GPM: 916-1120
SPP: 1788-2712 psi

930
940
950
960
970
980
990
1000
1010
1020
1030
1040
1050



340mm (13.375") CASING SHOE
SET @ 930m MDRT

445mm (17.5") SECTION TD
@ 935m MDRT @ 06:00hrs ON
10th OCTOBER 2009

DRILL AHEAD 311mm(12.25")
HOLE SECTION FROM 935m MDRT
@ 16:00HRS on 15th OCT 2009

CONDUCT LOT @ 930m
15.15ppg EMW.

CLAYSTONE:med gry,v sft-sft,
rr frm,amorph-sblky,tr bryz &
shell frgs,tr pyr,35% calc clay.

SURVEY @ 952.44m
Incl: 0.80° AZI: 188.49°
TVD: 952.40m

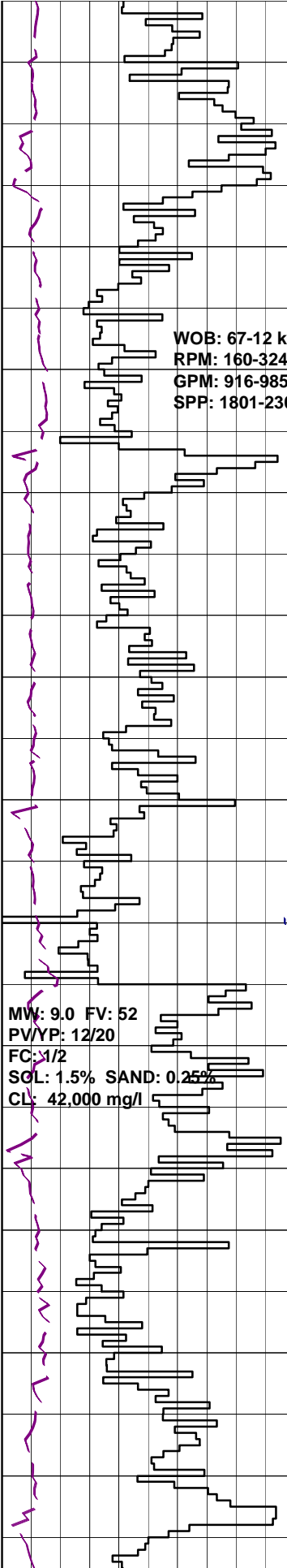
SILTSTONE:med dk gry,frm-
hd,ang-sbblky,tr byrz & foram,
tr shell frg,30% calc clay.

SURVEY @ 981.35m
Incl: 0.71° AZI: 192.99°
TVD: 981.31m

SURVEY @ 1010.2m
Incl: 0.83° AZI: 198.72°
TVD: 1010.16m

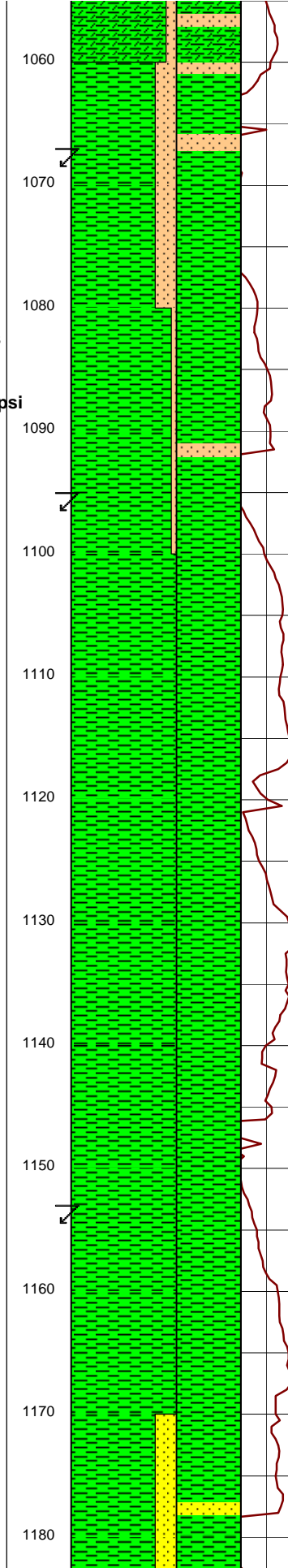
CLAYSTONE:med-occ lt gry,sft-
occ frm,amorph-sblky,mnr
micmic,tr bryz,tr forams,tr
shell frg,30% calc.

CLAYSTONE:med-occ lt gry,sft-
occ frm,amorph-sblky,mnr
micmic,tr bryz,tr forams,tr
shell frg,30% calc.



WOB: 67-12 klbs
RPM: 160-324
GPM: 916-985
SPP: 1801-2309 psi

MW: 9.0 FV: 52
PV/YP: 12/20
FC: 1/2
SOL: 1.5% SAND: 0.25%
CL: 42,000 mg/l



SURVEY @ 1067.16m
Incl: 0.87° AZI: 190.96°
TVD: 1067.16m

CALCAREOUS CLAYSTONE:med-dk gry,
sft-frm,blky-sbblky,tr micmic,foss
frags,forams,10% calc cly.

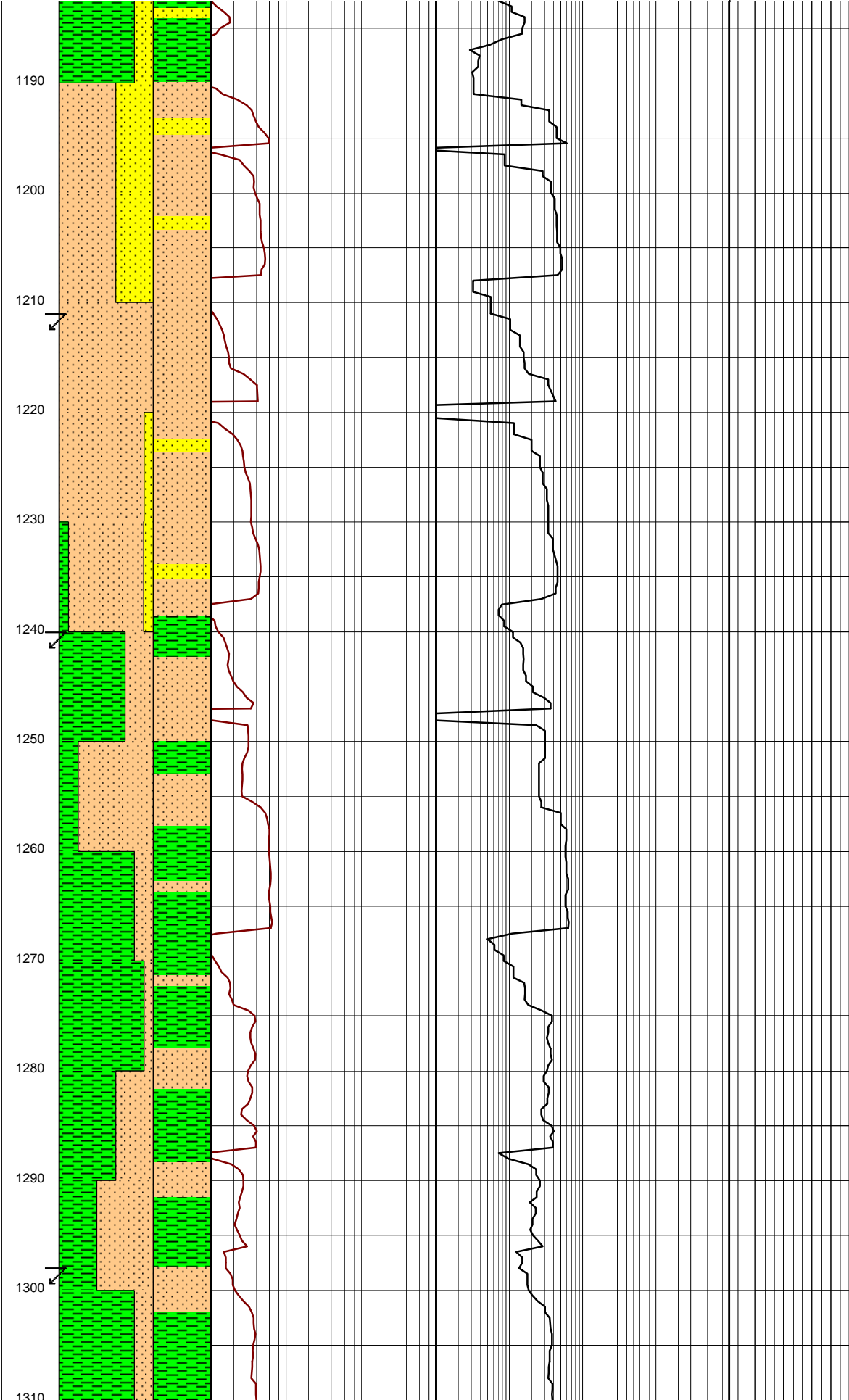
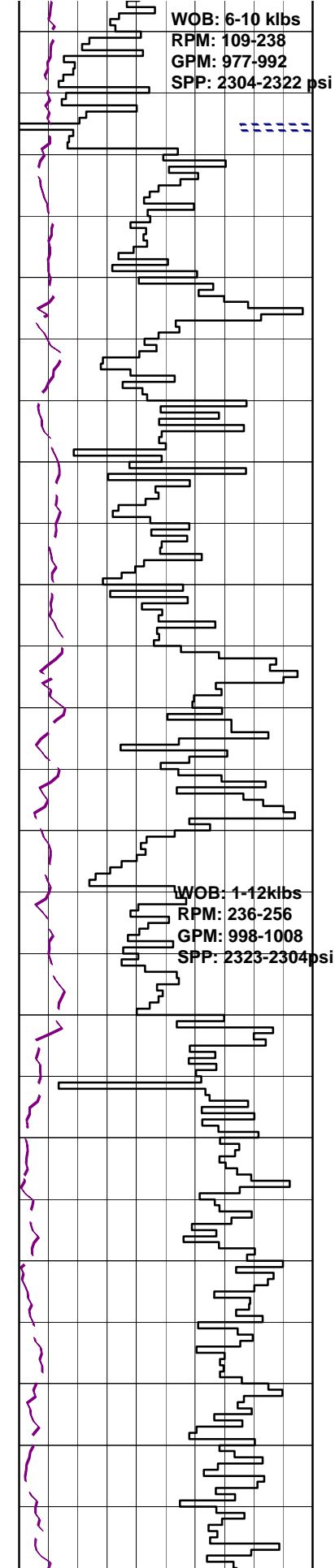
SURVEY @ 1095.87m
Incl: 0.84° AZI: 194.49°
TVD: 1095.82m

CLAYSTONE:med- dk gry,sft-frm,
sbblky-blky,tr micmic,shell frags,
corals,tr vf pyr aggs,10% calc cly.

SURVEY @ 1153.51m
Incl: 1.11° AZI: 191.81°
TVD: 1153.45m

CLAYSTONE:med-dk gry,olv gry,
sft-frm,sbblky-blky,tr micmic,shell
frags,5% calc cly.

CLAYSTONE:olv gry,drk grn/gry,
sft-frm,sbblky-blky,tr grd to sbfiss,
tr vfg pyg as repl,tr shell frags,
tr micmic,5% calc cly.



SURVEY @ 1152.36m
Incl: 1.27° AZI: 187.06°
TVD: 1182.29m

SANDSTONE:lt olv gry,med gry,v sft-fri,vf grns,sbang-sbrnd,wl srt,sph-sbsph,tr lith frags,10% pr calc cmt,gd vis por,no fluor.

SURVEY @ 1211.30m
Incl: 0.97° AZI: 182.631°
TVD: 1211.23m

SILTSTONE:med gry,med-lt gry,sft,sbblky,tr carb lam,tr lith frags,tr calc cly.

SANDSTONE:lt olv gry,med gry,v sft-fri aggs,vf grns,sbang-sbrnd,wl srt,sph-sbsph,tr lith frags,10% pr calc cmt,gd vis por,no fluor.

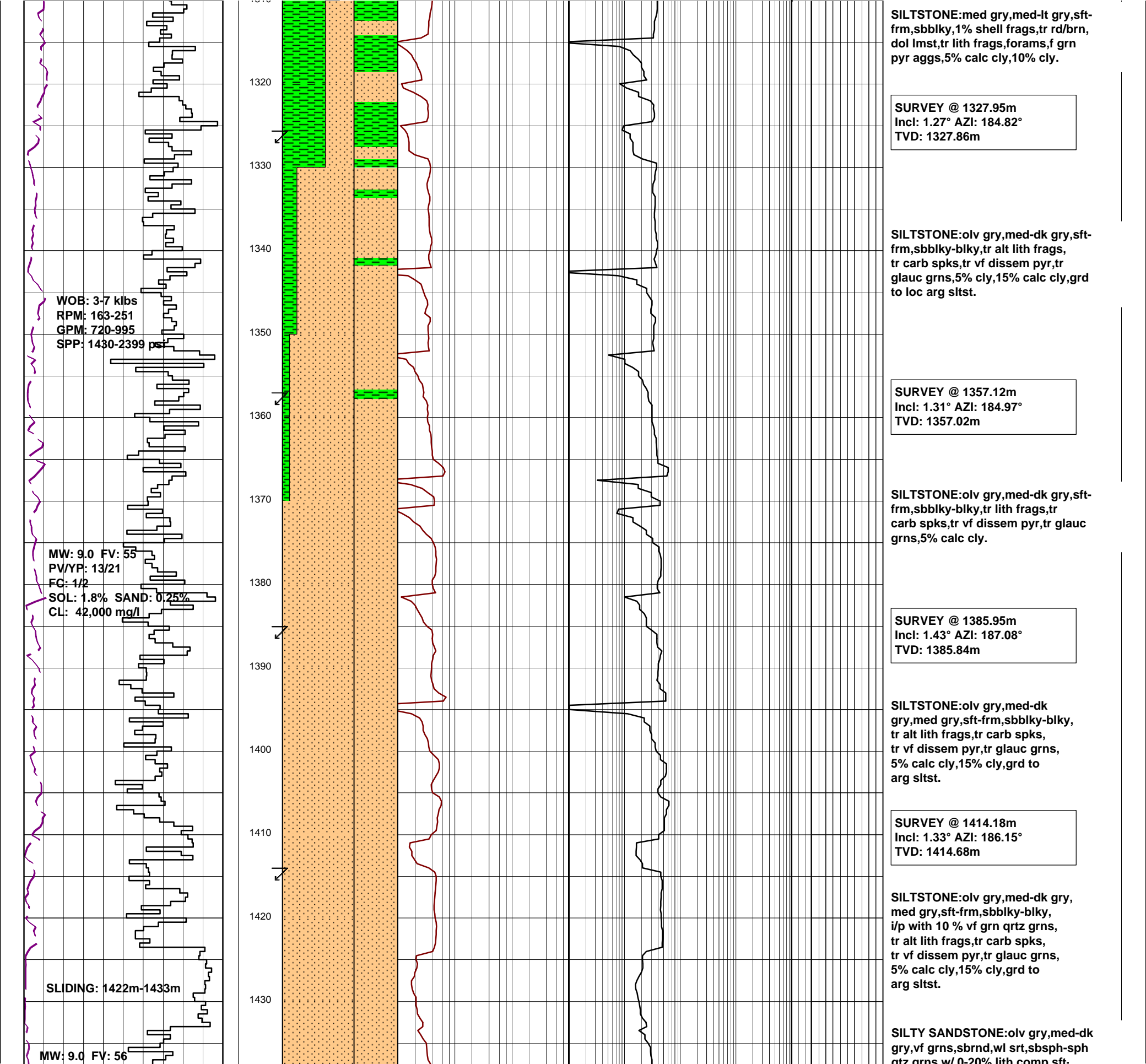
SURVEY @ 1240.32m
Incl: 1.00° AZI: 184.76°
TVD: 1240.24m

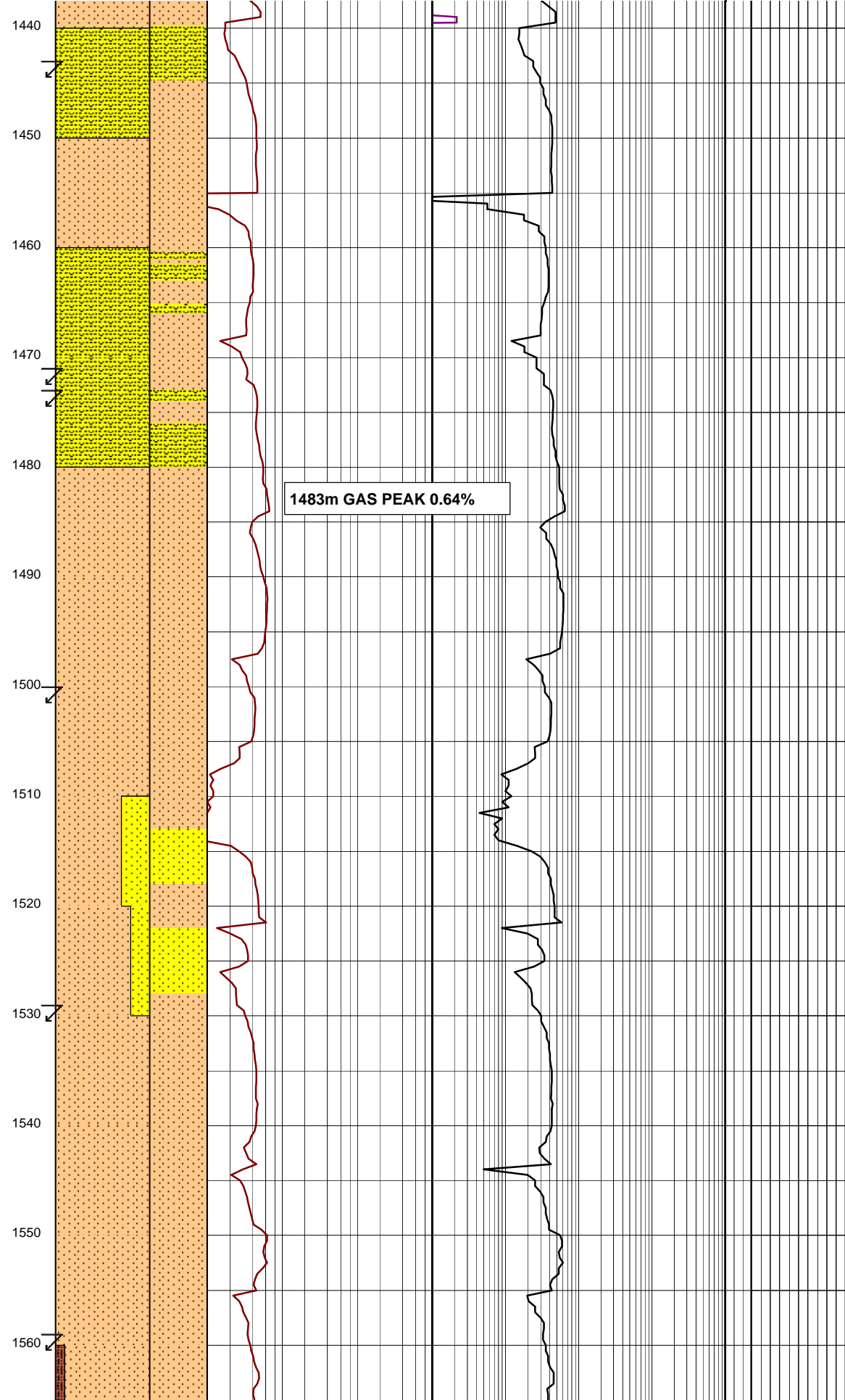
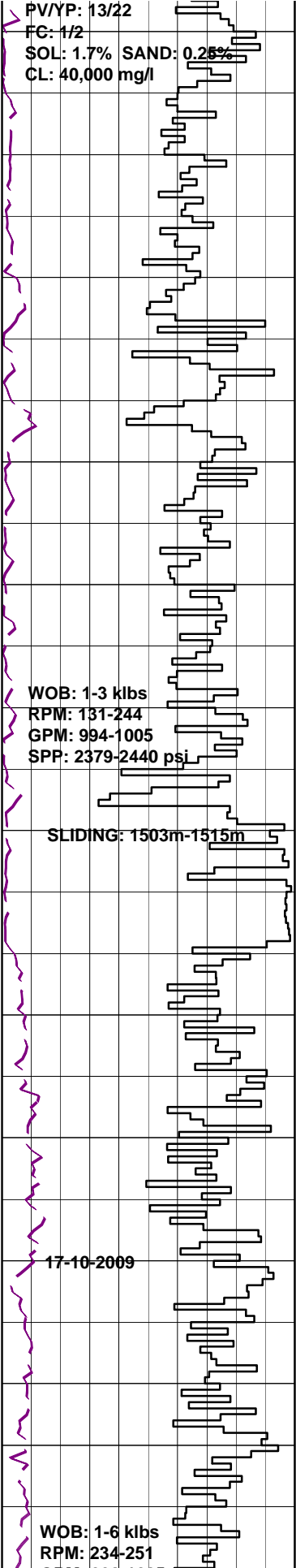
CLAYSTONE:olv gry,sft-frm,sbblky-blky,tr shell frags,lith frags,forams,5% calc cly,10% cly.

SURVEY @ 1298.71m
Incl: 1.13° AZI: 178.12°
TVD: 1298.62m

SILTSTONE:med gry,med-lt gry,sft-frm,sbblky,tr shell frags,lith frags,forams,5%calc clay,10% cly.

CLAYSTONE:olv gry,dk grn/gry,sft-frm,sbblky,tr forams,2% micmic,tr f grn pyr aggs,10% calc cly.





qtz grns, tr 0-20% lith compnt,
frm, sbblky-sbfiss, tr carb spks, 5%
calc cmt, pr vis por, no fluor.

CARBIDE LAG CHECK @ 1438m
THEOR. STKS: 5872
ACTUAL STKS: 6090
OPEN HOLE O.G: 4.2%

SURVEY @ 1443.26m
Incl: 1.42° AZI: 189.23°
TVD: 1443.14m

SILTY SANDSTONE: olv gry, med
dk gry, vf grns, sbrnd, wl
srt, sbsphr to sphr qtz grns
with 0 to 20% lithic cmpnt,
sft-frm, sbly-sbfiss, tr
carb spks, 5% calc cmt, pr vis por,
no fluor.

SURVEY @ 1471.76m
Incl: 1.41° AZI: 188.77°
TVD: 1471.63m

SILTSTONE: olv gry, med gry,
tr dk gry, sft-frm, sbblky,
tr carb spks, lithic frags, glauc,
5% calcareous clay, 10% very fine
qtz sand.

SURVEY @ 1500.56m
Incl: 1.44° AZI: 186.77°
TVD: 1500.42m

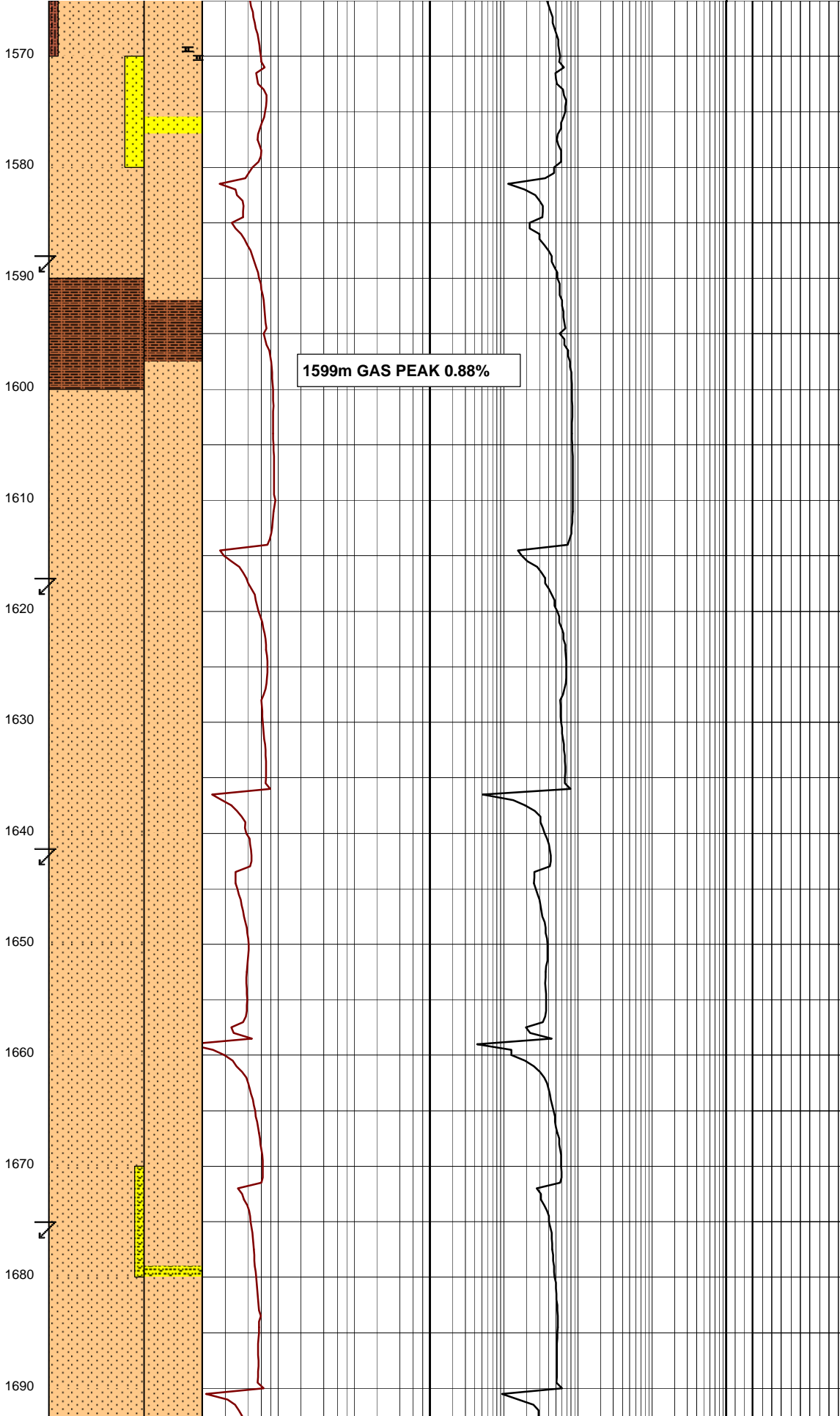
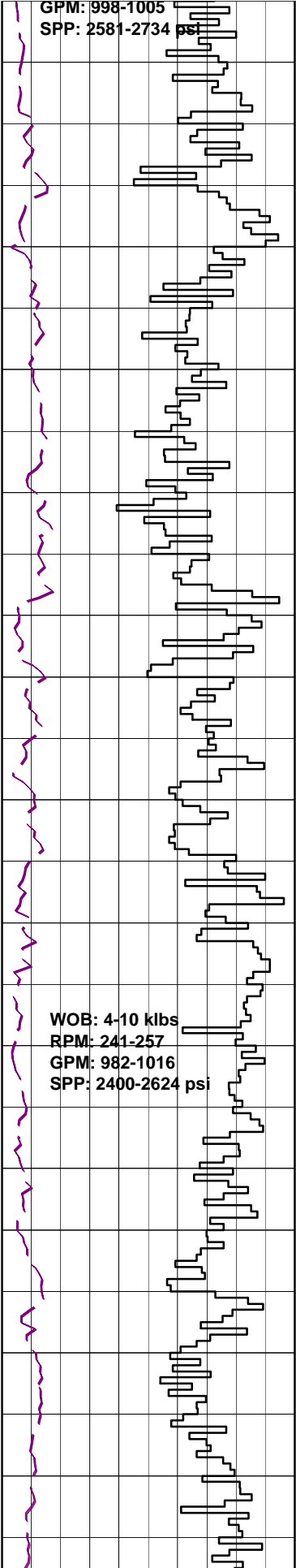
SILTSTONE: olv gry, med dk gry,
sft-frm, tr fri, ang to sbblky,
tr carb spks, calcite crys, glauc,
lithic frags, 5% calc clay, 10%
clay, 15% vf qtz sand.

SANDSTONE: med dk gry, dk gry,
vf grn, sbrnd, wl srt, sbspher-
spher qtz grns with 10-15%
lithic frag, 5% calc clay cmt,
10% clay comp, por vis por, no
fluor.

SURVEY @ 1529.74m
Incl: 1.02° AZI: 177.87°
TVD: 1529.59m

SILTSTONE: olv gry, sft-frm,
sbblky, tr glauc, lithic frags,
5% calc clay, 15% clay, 10% vf
qtz grns, tr v lt gry
highly degraded volcanics.

SURVEY @ 1559m
Incl: 1.11° AZI: 183.32°
TVD: 1558.85m



SANDSTONE:med blu gry,
vf grn,sbrnd,wl srt to v
wl srt,spher qrtz grns
with 10% lithic comp,mod
hd-hd,ang-sbblky,tr micmic,
hgly cmt,10% calc cmt,
10% clay comp,no vis por,
no fluor.

SURVEY @ 1588.15m
Incl: 1.05° AZI: 181.86°
TVD: 1587m

SANDY SILTSTONE:olv gry,med
dk gry,sft-frm,ang-sbblky,
tr carb spks,glauc,lithic
frags,micmic,shell
frags,5% calc clay,10% clay,
20% vf qrtz sand.

SILTSTONE:olv gry,med gry,sft-
frm,sbblky,tr carb spks,glauc,
lithic frags,shell frags,5% calc
clay,15% clay.

SURVEY @ 1617.27m
Incl: 1.14° AZI: 175.03°
TVD: 1617.11m

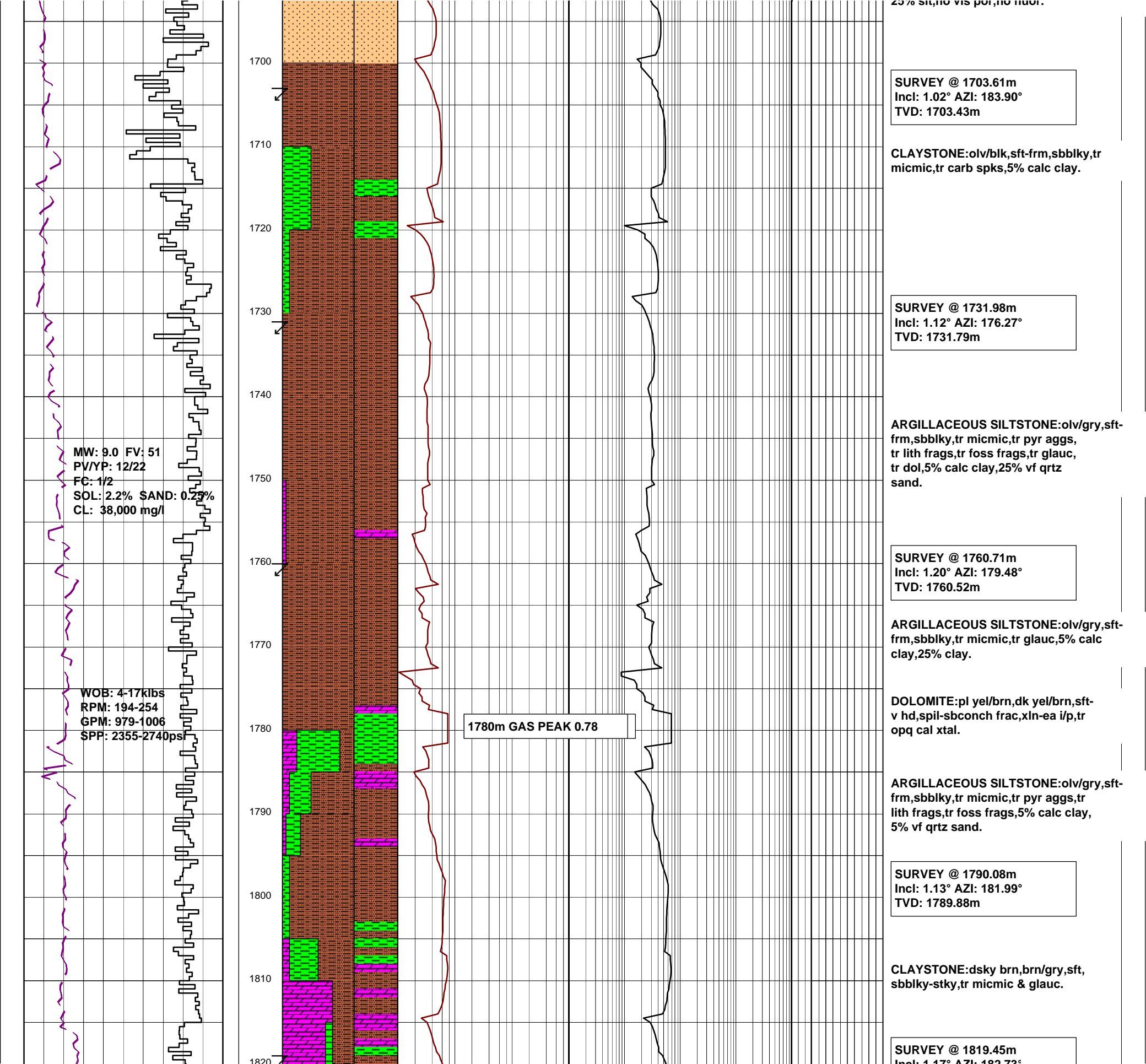
SILTSTONE:olv gry,sft-frm,
sbblky,tr carb spks,glauc,
lithic frag,5% calc clay,10%
clay,5% very fine qrtz sand.

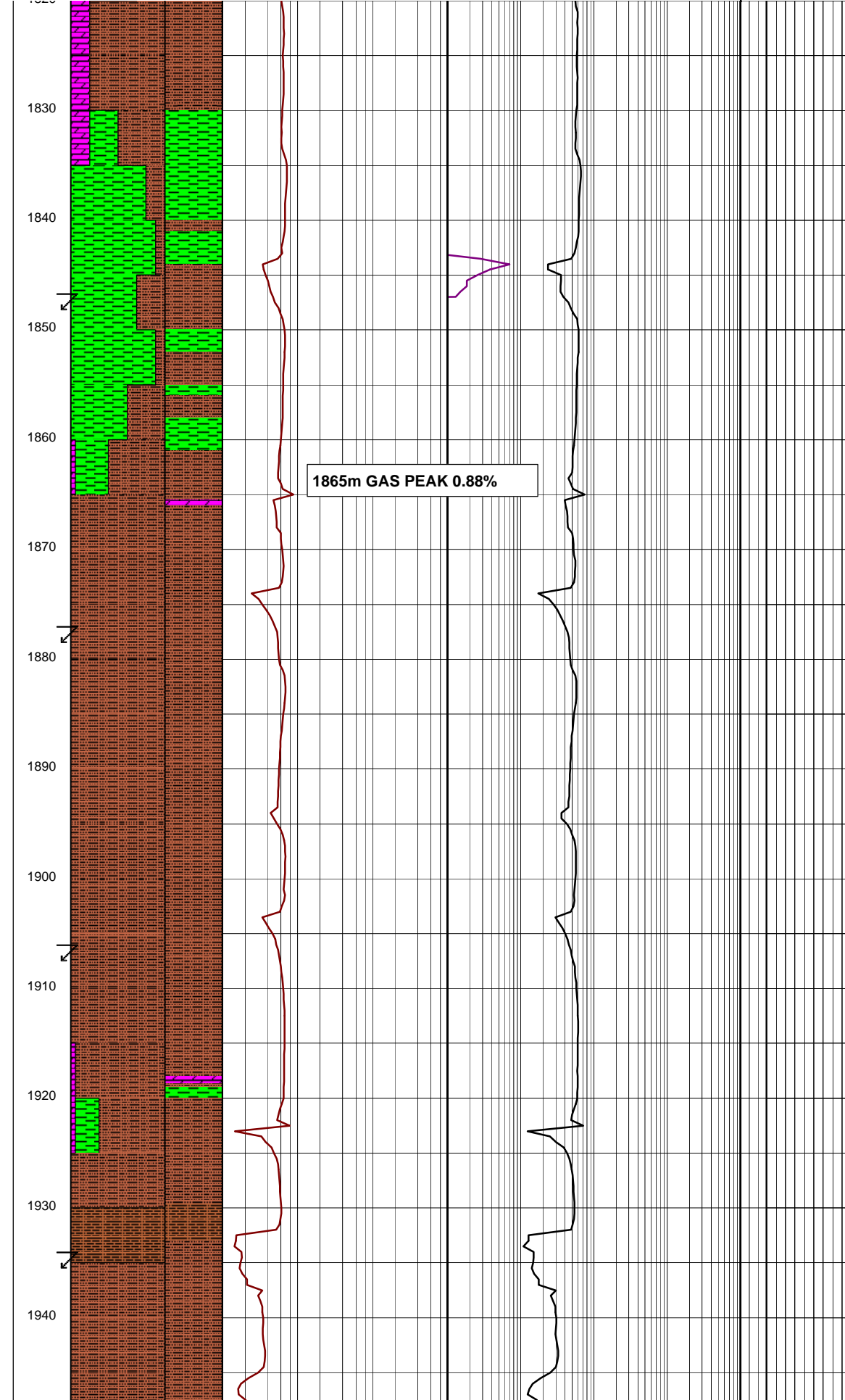
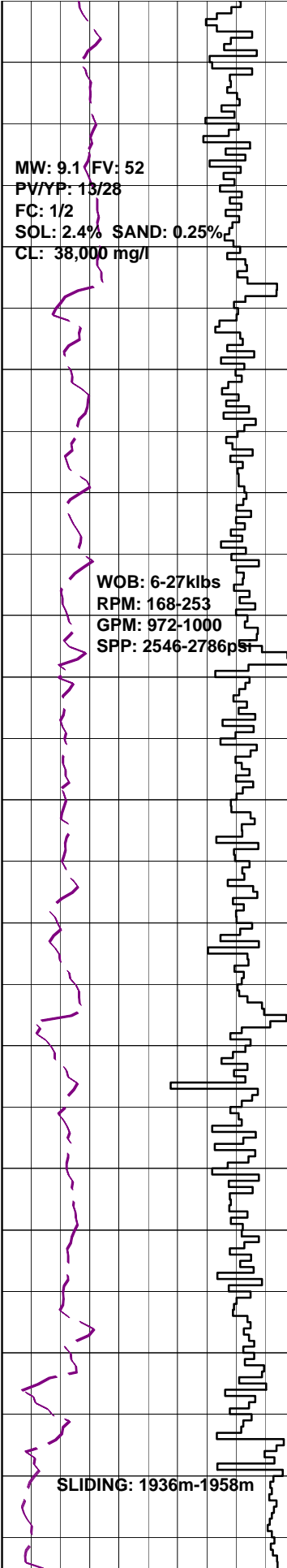
SURVEY @ 1646.32m
Incl: 1.17° AZI: 184.16°
TVD: 1646m

SILTSTONE:olv gry,sft-frm,
sbblky,tr carb spks,glauc,
tr lithic frag,tr shell frag,
5% calc clay,10% clay,5%
vf qrtz sand.

SURVEY @ 1675.15m
Incl: 1.31° AZI: 182.99°
TVD: 1672.97m

SILTY SANDSTONE:med blu/gry,med gry,
vf grns,sbrnd,wl-v wl srt,sbspher qtz
grns w/ 10% lith comp,mod hd-hd aggs,
ang-sbblky,tr micmic,tr calc xtal,tr
shell frags,high cmted,10% calc cmt,
25% silt no vis por no fluor





Incl: 1.17° AZI: 182.73°
TVD: 1819.24m

ARGILLACEOUS SILTSTONE: olv/gry, yel/brn i/p, olb/blk, sft-frn, sbblk, tr micmic, 25% clay.

DOLOMITE: pl yel/brn, dk yel/brn, sft-v hd, splin-sbconch frac, xln-ea i/p.

CARBIDE LAG CHECK @ 1843m
THEOR. STKS: 7680
ACTUAL STKS: 8502
OPEN HOLE O.G: 4.2

SURVEY @ 1848.52m
Incl: 1.17° AZI: 190.32°
TVD: 1848.314m

CLAYSTONE: olv blk, olv gry, tr dk yel brn, sft-frn, sbblk-blky, micromicas.

DOLOMITE: pl yel brn, frm-hd, splin-conch frac i/p, ea.

ARGILLACEOUS SILTSTONE: brn blk, sft-frn, sbblk, tr micmic, lithic frag, glauc grns, pyr, 5% vf qrtz grns, 25% clay.

SURVEY @ 1877.80m
Incl: 1.13° AZI: 190.92°
TVD: 1877.58m

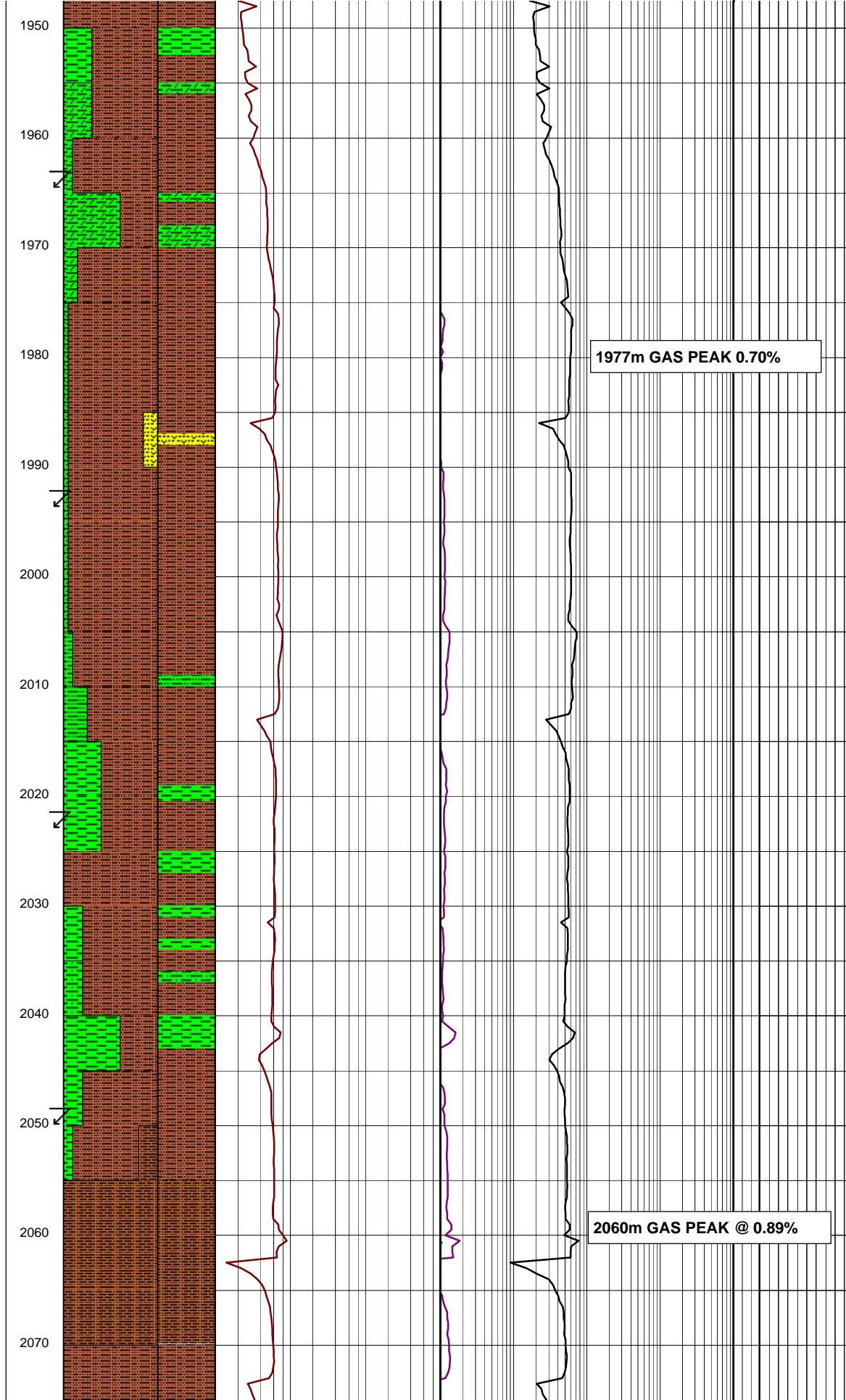
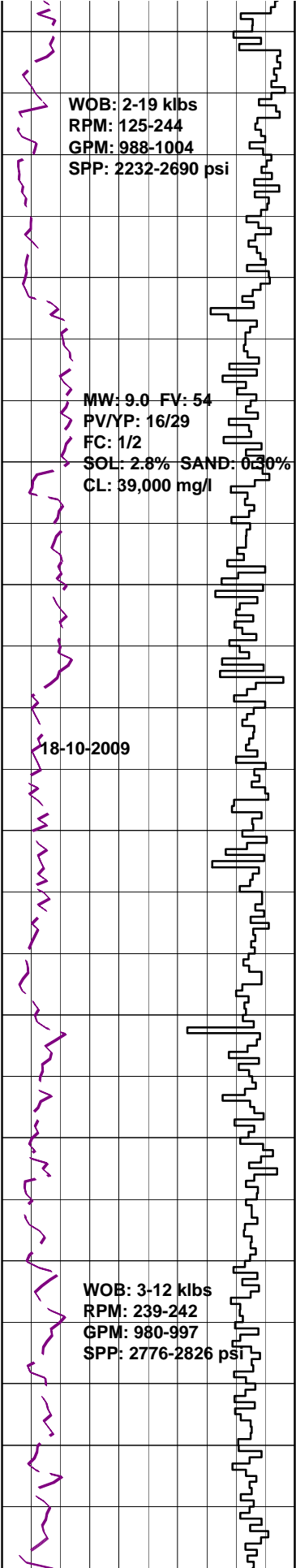
ARGILLACEOUS SILTSTONE: brn blk, olv blk, sft-frn, sbblk-blky, tr micmic, lithic frag, glauc grns, pyr, tr dolomite, 30% clay.

DOLOMITE: pl yel brn, dk yel brn, frm-hd, splin frac, xln-microxln i/p.

CLAYSTONE: med gry, drk gry, vf-sft, amorph-sbbk, tr micmic, lithic frag, 10% silt sized frac.

SURVEY @ 1934.67m
Incl: 1.08° AZI: 194.42°
TVD: 1934.44m

ARGILLACEOUS SILTSTONE: brn blk, olv blk, sft-frn, sbblk, tr



micmic,dolomite,20% clay,10% vf
qrtz sand grns.

CLAYSTONE:brn blk,olv blk,v
sft-sft,amorph to sbblky,tr
micmic,tr glauc,10% silt sized
frac.

SURVEY @ 1963.22m
Incl 0.48° AZI:64.50°
TVD:1962.99m

ARGILLACEOUS SILTSTONE:brn blk,
olv blk,sft-frn,sbblky,tr
shell frag,lithic frag,glauc,
20% clay,5% v fine qrtz sand.

SILTY SANDSTONE:brn blk,olv
blk,vf grn,sbrnd,wl-v wl srt,
sub spher qrtz grns,sft-fri,
sbblky,tr lithic frag,15% clay,
25% silt.

SURVEY @ 1992.33m
Incl 0.56° AZI:59.70°
TVD:2021.23m

CALCAREOUS CLAYSTONE:med gry,
med lt gry,frm-mod hd,sbblky,tr
tr calcite vein,lithic frag,shell
frag,10% silt.

SURVEY @ 2021.46m
Incl 0.59° AZI:61.98°
TVD:2021.23m

ARGILLACEOUS SILTSTONE:brn
blk,olv blk,sft-fri,amorph-
sbblky,tr carb spks,lithic
frag,35% clay,5% calc clay.

CLAYSTONE:med gry,med dk gry,
mod hd-hd,ang-sbblky,tr
shell frag,micmic,calcite vein,
10% calc clay,15% silt.

ARGILLACEOUS SILTSTONE:brn
blk,olv blk,sft-fri,amorph-
sbblky,lithicfrag,35% clay,
5% calc clay.

SANDY SILTSTONE:brn blk,olv
blk,sft-fri,sbblky,tr lith
frag,10% clay,30% vf qrtz sand.

SURVEY @ 2050.74m
Incl 0.68° AZI:78.76°
TVD:2050.5m

