



PRESSURE EVALUATION LOG



WELL : TREFOIL-2

FROM (m): 2510

TO (m): 2870

SCALE: 1/ 500

Country : AUSTRALIA	Latitude : 39 53' 07.93" S	762mm (30") at (m MDRT) : 153.00	Spud Date : 06-10-2009
Region : TASMANIA	Longitude : 145 22' 14.62" E	340mm (13 3/8") at (m MDRT) : 930.00	Total Depth Date :
Field : TREFOIL	X (m) : 360690.389	245mm (9 5/8") at (m MDRT) : 2520.00	Total Depth (m MDRT) :
Permit : T/18P	Y (m) : 5583676.588		Total Depth (m TVSS) :
Well Type : APPRAISAL	RT-Sealevel (m MSL) : 26		Status :
Rig Name : KAN TAN 4	RT-Seabed (m) : 95		

ABBREVIATIONS

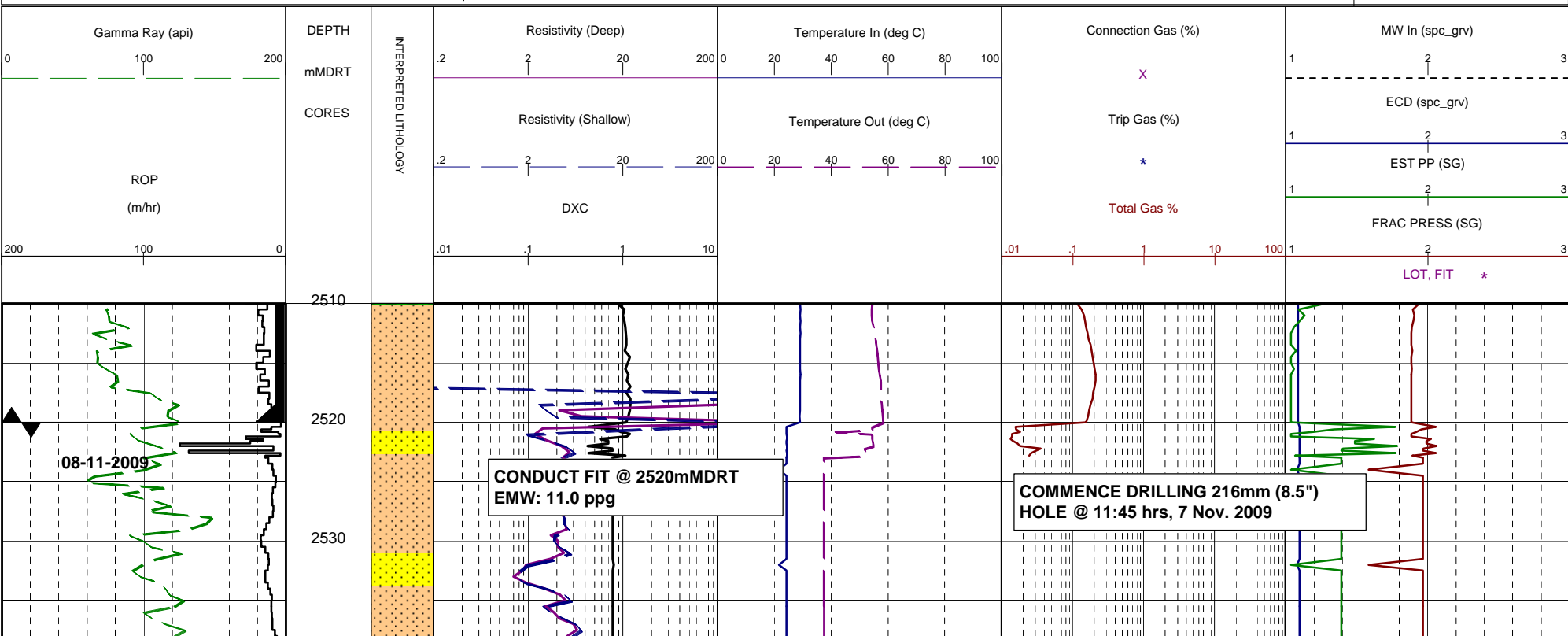
MW MUD WEIGHT	NB NEW BIT
FV FUNNEL VISCOSITY	RR RERUN BIT
PV PLASTIC VISCOSITY	CB CORE BIT
YP YIELD POINT	WOB WEIGHT ON BIT
FC FILTER CAKE	RPM REVS PER MINUTE
SOL SOLIDS	FLC FLOW CHECK
CR CIRCULATE RETURNS	WL FILTRATE
SD SAND - %	PR POOR RETURNS
S SALINITY - PPM	NR NO RETURNS
RM MUD RESISTIVITY	BG BACKGROUND GAS
RMF MUD FILTRATE	TG TRIP GAS
C CARBIDE TEST	STG SHORT TRIP GAS
LAT LOGGED AFTER TRIP	CG CONNECTION GAS
DS DEVIATION SURVEY	SG SWAB GAS
	SVG SURVEY GAS

LITHOLOGY LEGEND

Dolomite	Claystone	Argil Siltstone	Calcareous
Calcirudite	Siltstone	Sandy Siltstone	Dolomitic
Calcarenite	Sandstone	Calcareous Siltstone	Fossils
Calcisiltite	Coal	Argil Sandstone	Foraminiferae
Calcilutite	Intrusive Volcanics	Calcareous Sandstone	Carbonaceous
Sandy Claystone	Volcaniclastics	Dolomitic Sandstone	Chert
Silty Claystone	Tuff	Silty Sandstone	Pyrite
Calcareous Claystone	Cement		Glauconite
Argil Calcilutite			Mica

ENGINEERING

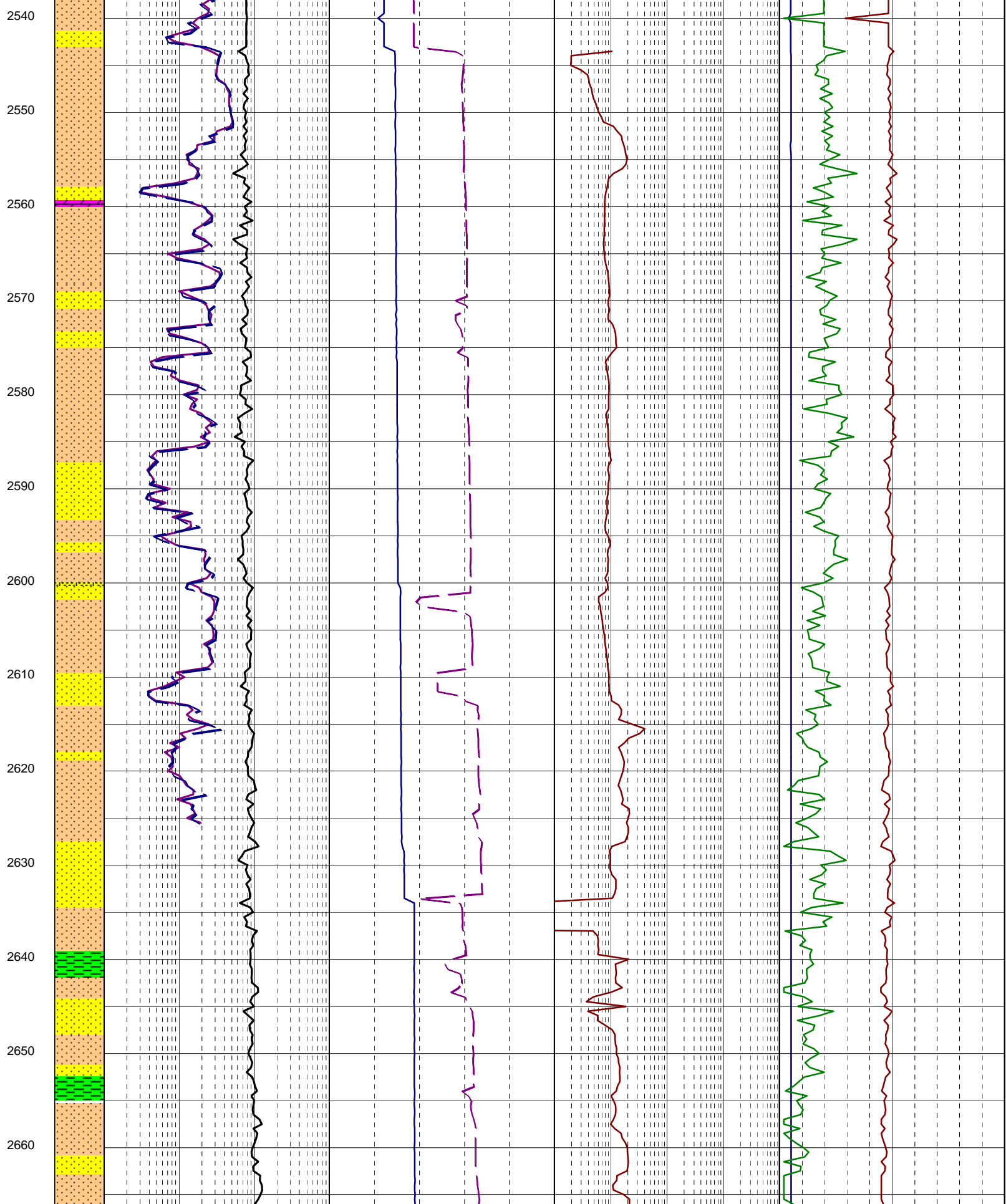
Test
FIT or LOT
Mud loss
Mud gain
Deviation survey
Core
Shoe
Calcimetry



WOB: 1-16 klbs
RPM: 70-72
GPM: 714-729
SPP: 1523-1617 psi

WOB: 1-16 klbs
RPM: 46-156
GPM: 684-712
SPP: 2328-2554 psi

MW: 9.4 FV: 68
PV/YP: 11/26
FC: 1/2
SOL: 3.3% SAND: 0.25%
CL: 41,500 mg/l



2670
2680
2690
2700
2710
2720
2730
2740
2750
2760
2770
2780
2790

WOB: 5-15 klbs
RPM: 115-120
GPM: 690-708
SPP: 2400-2554 psi

MW: 9.4 FV: 46
PV/YP: 10/28
FC: 1/2
SOL: 3.5% SAND: 0.25%
CL: 40,000 mg/l

