

DRILLING DATA LOG

WELL : TREFOIL-2



FROM (m): 900

TO (m): 2330

SCALE: 1/ 500

Country : AUSTRALIA
Region : TASMANIA
Field : TREFOIL
Permit : T/18P
Well Type : APPRAISAL
Rig Name : KAN TAN 4

POSITION
Latitude : 39 53' 07.93" S
Longitude : 145 22' 14.62" E
X (m) : 360690.389
Y (m) : 5583676.588
RT-Sealevel (m MSL) : 26
RT-Seabed (m) : 95

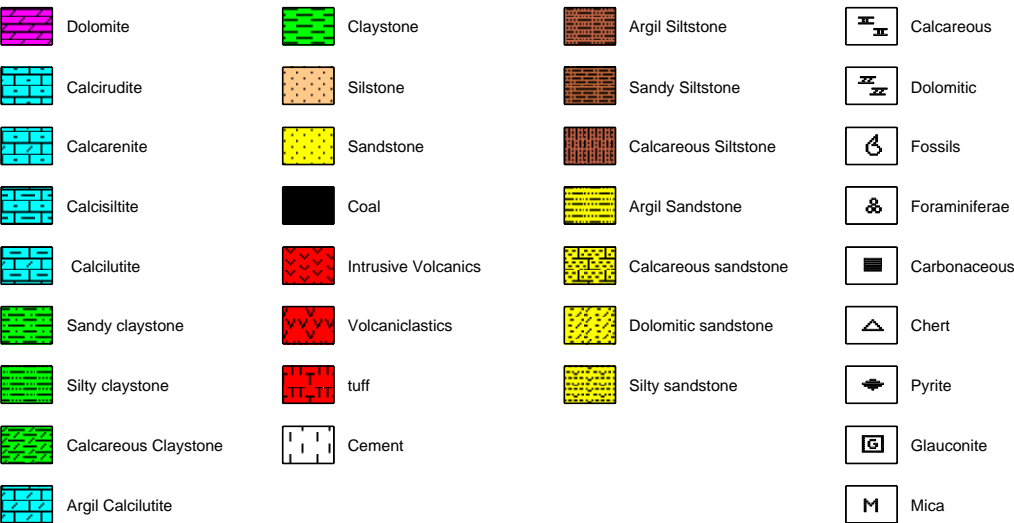
CASING SHOE SIZE / DEPTH
762mm (30") at (m MDRT) : 153.00
340mm (13 3/8") at (m MDRT) : 930.00
245mm (9 5/8") at (m MDRT) :

Spud Date : 06-10-2009
Total Depth Date :
Total Depth (m MDRT) :
Total Depth (m TVSS) :
Status :

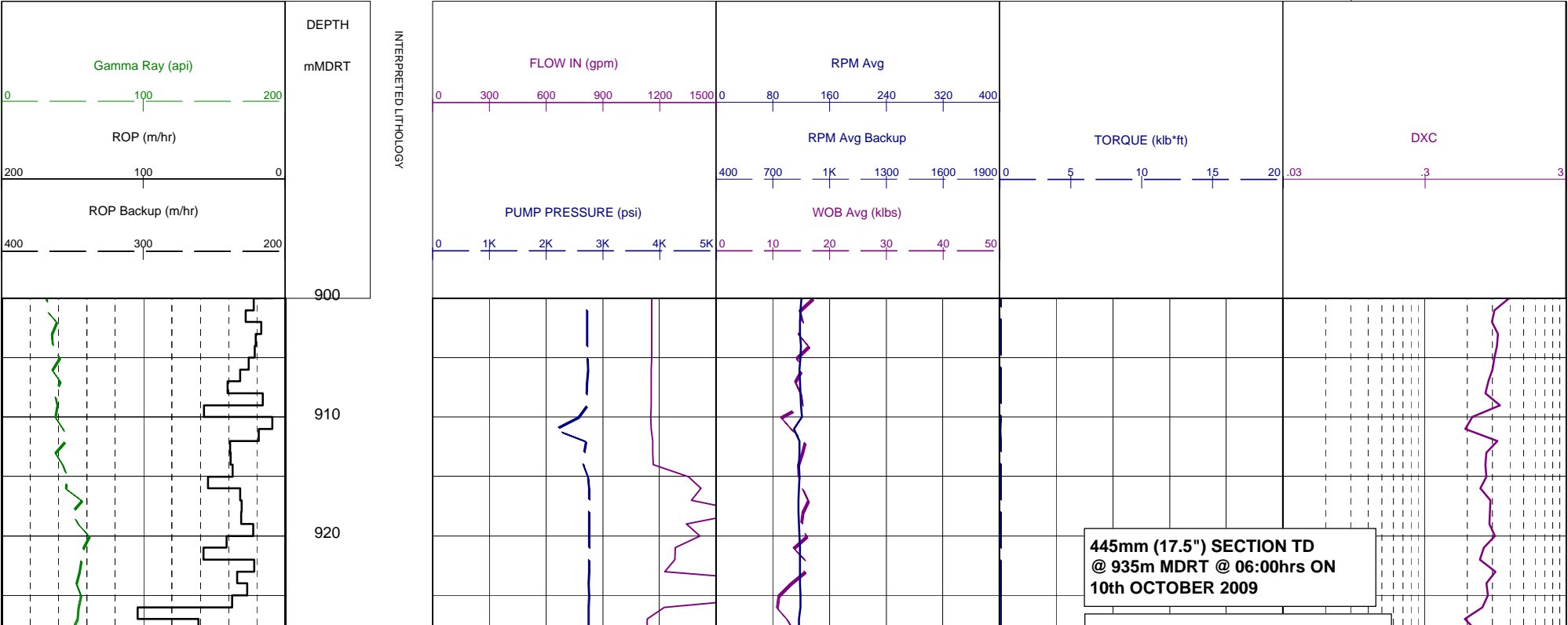
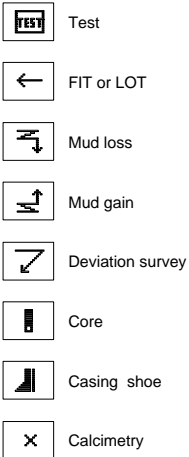
ABBREVIATIONS

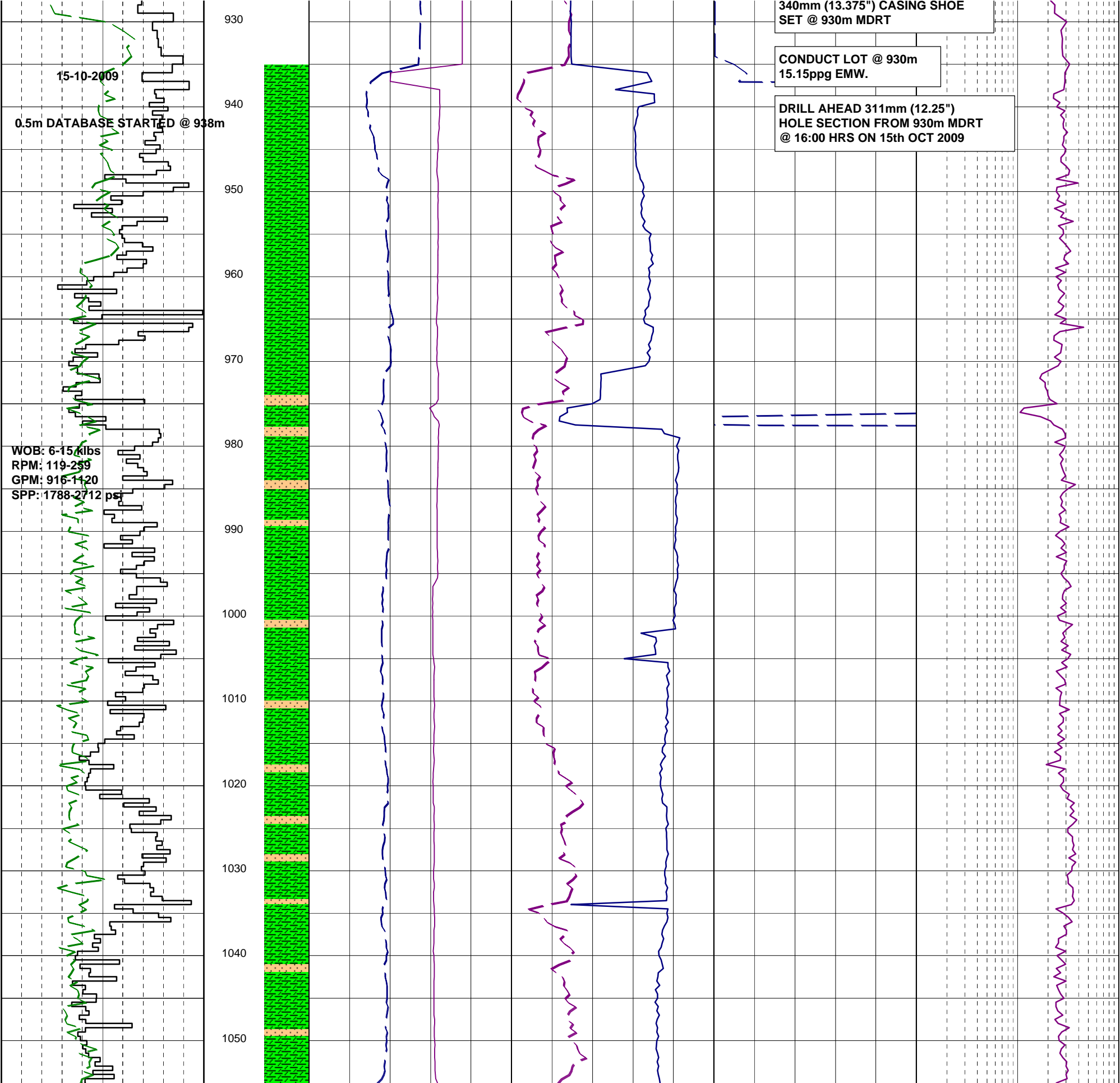
MW MUD WEIGHT NB NEW BIT
FV FUNNEL VISCOSITY RR RERUN BIT
PV PLASTIC VISCOSITY CB CORE BIT
YP YIELD POINT WOB WEIGHT ON BIT
FC FILTER CAKE RPM REVS PER MINUTE
SOL SOLIDS FLC FLOW CHECK
CR CIRCULATE RETURNS WL FILTRATE
SD SAND - % PR POOR RETURNS
S SALINITY - PPM NR NO RETURNS
RM MUD RESISTIVITY BG BACKGROUND GAS
RMF MUD FILTRATE TG TRIP GAS
C CARBIDE TEST STG SHORT TRIP GAS
LAT LOGGED AFTER TRIP CG CONNECTION GAS
DS DEVIATION SURVEY SG SWAB GAS
SVG SURVEY GAS

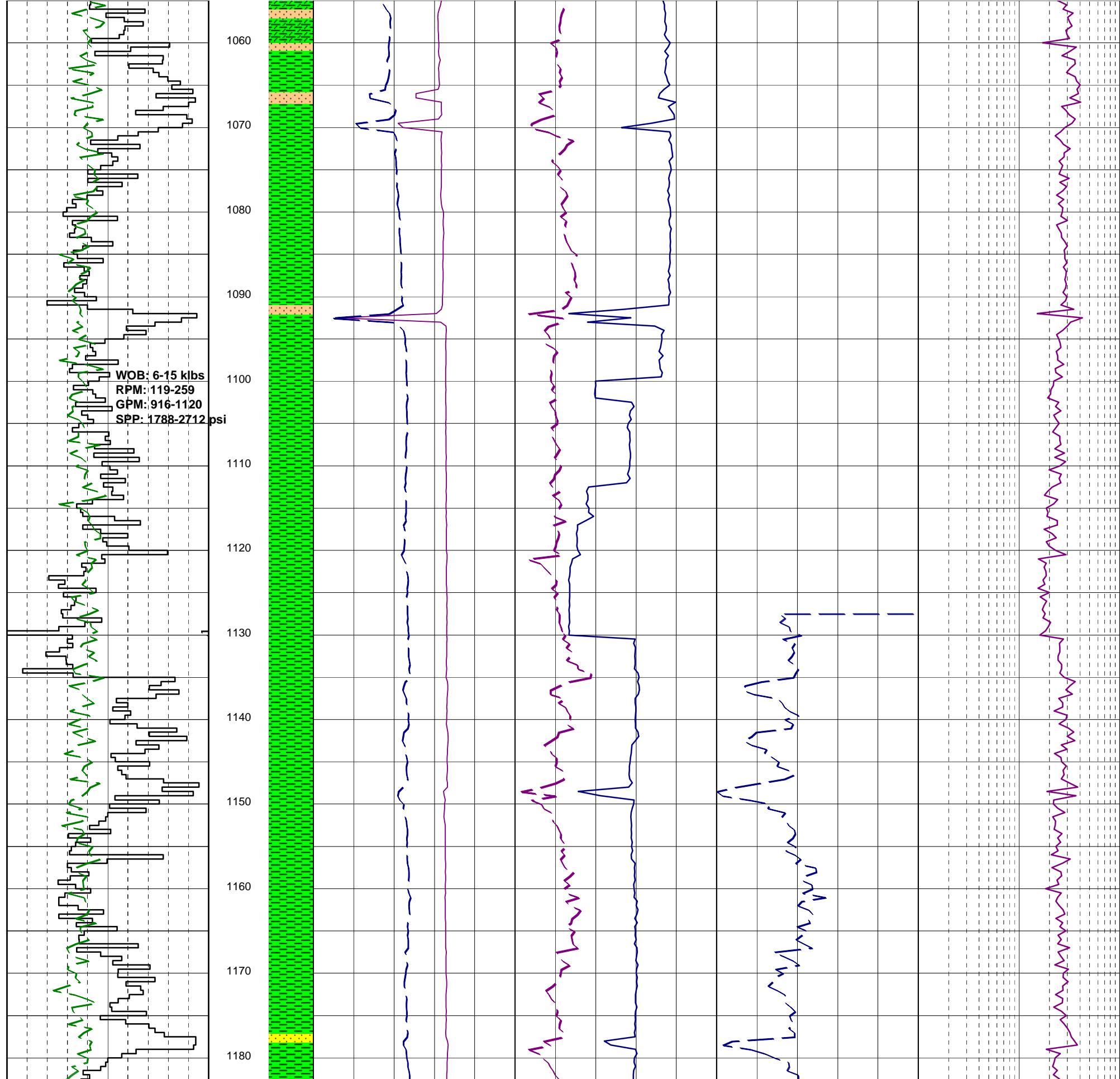
LITHOLOGY LEGEND

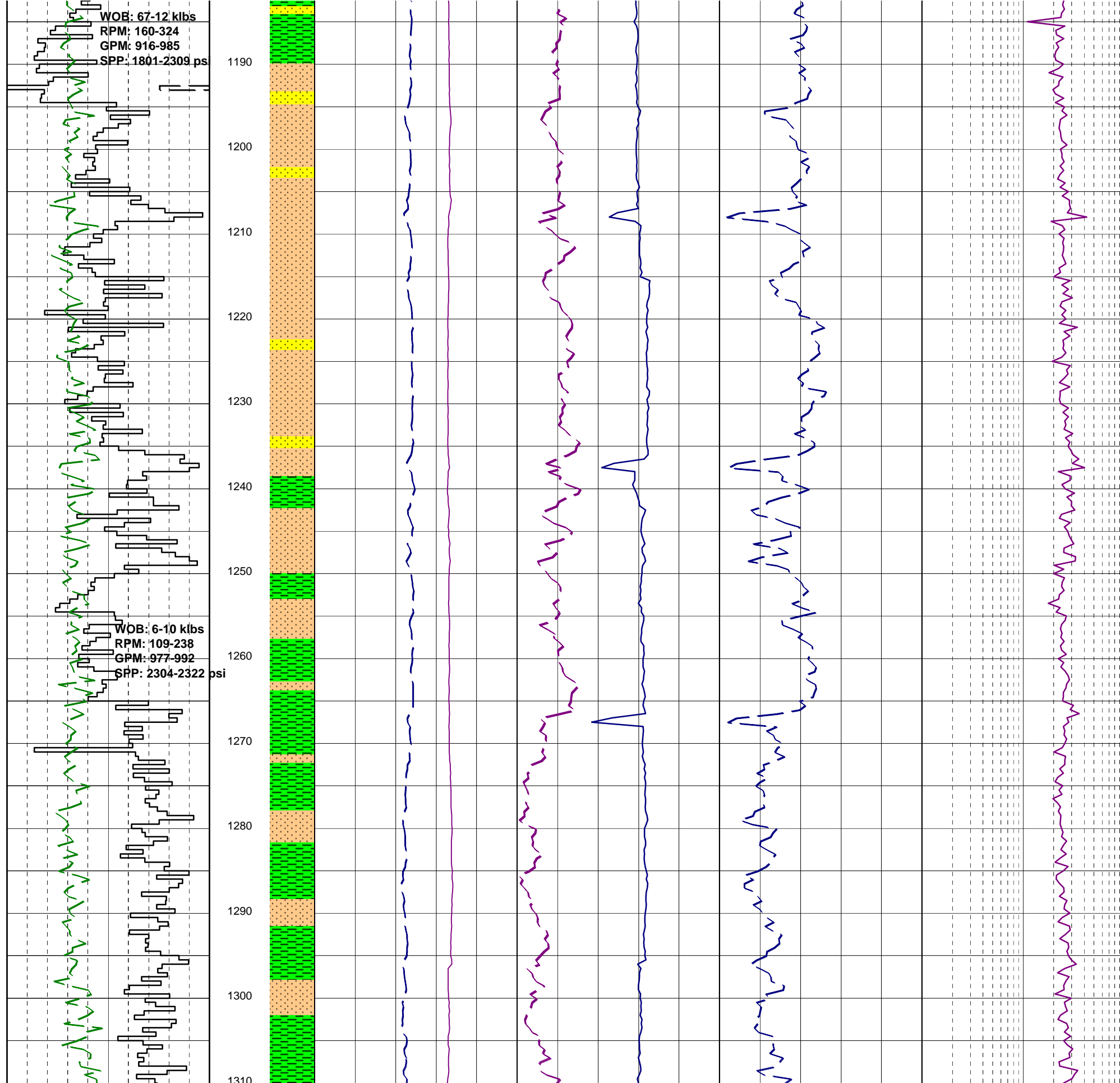


ENGINEERING





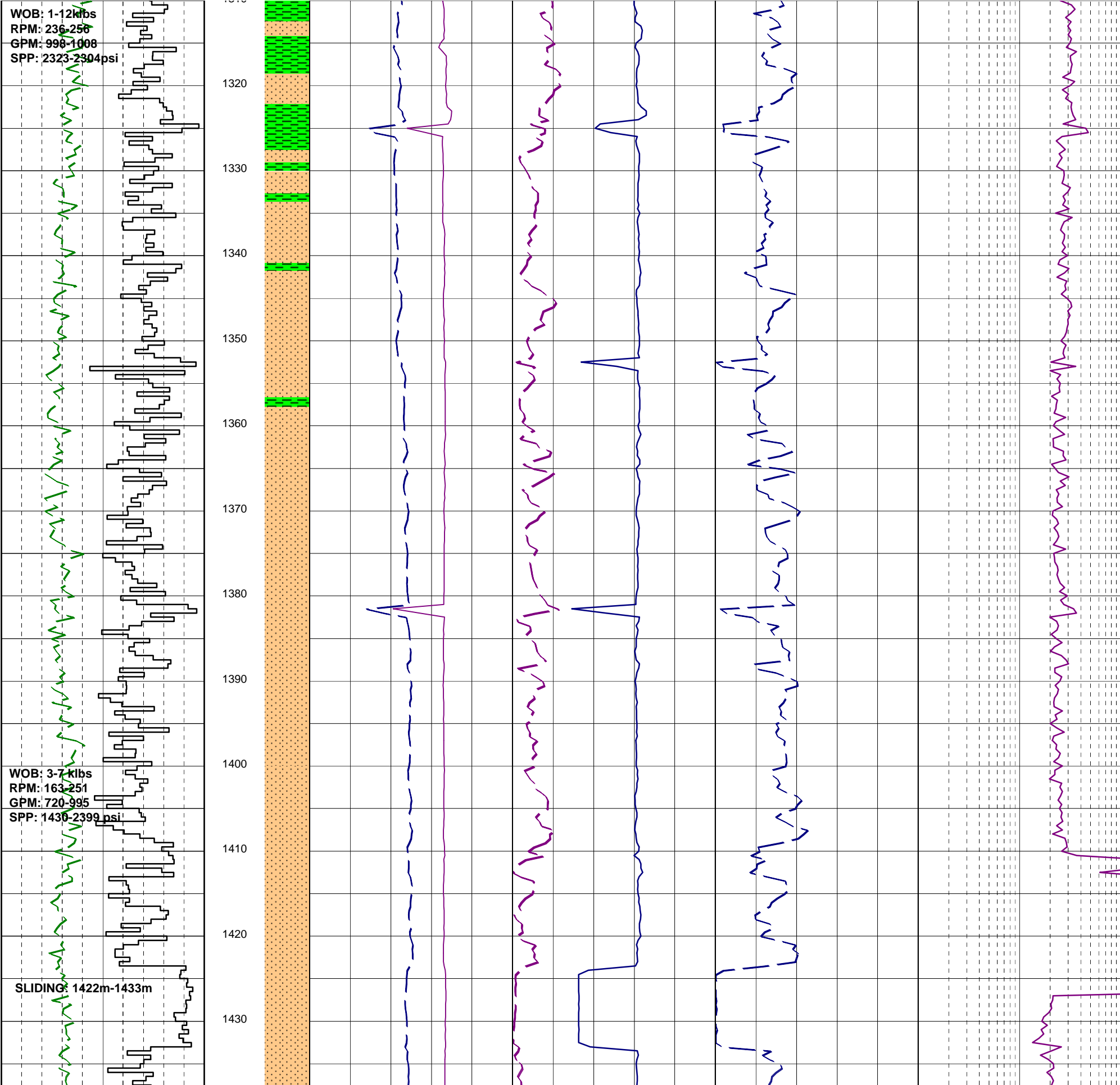


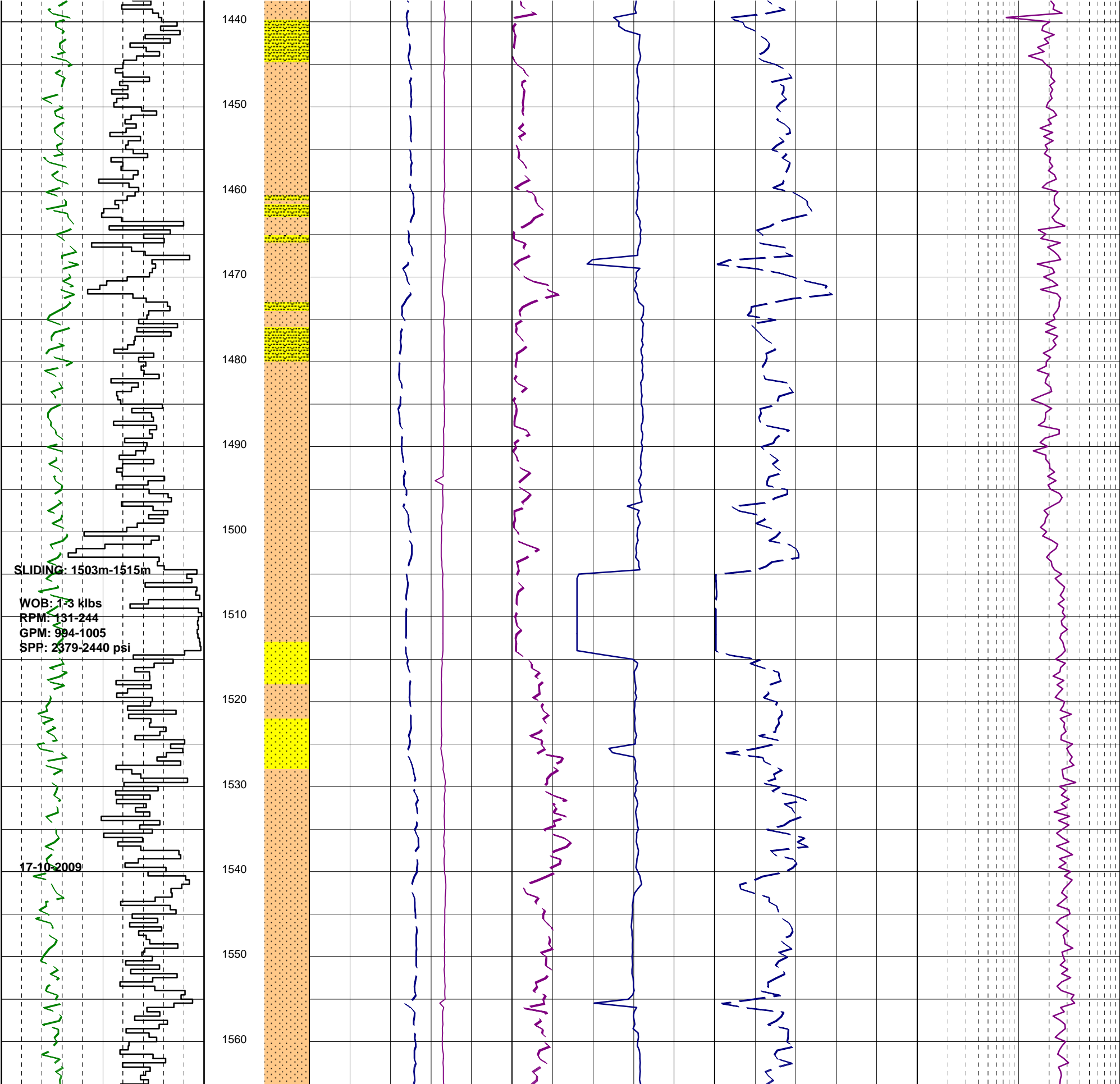


WOB: 1-12klbs
RPM: 236-256
GPM: 998-1008
SPP: 2323-2304psi

WOB: 3-7 klbs
RPM: 163-251
GPM: 720-995
SPP: 1436-2399 psi

SLIDING: 1422m-1433m





WOB: 1-6 klbs
RPM: 234-251
GPM: 998-1005
SPP: 2581-2734 psi

WOB: 4-17 klbs
RPM: 190-254
GPM: 979-1006
SPP: 2355-2740 psi

1570

1580

1590

1600

1610

1620

1630

1640

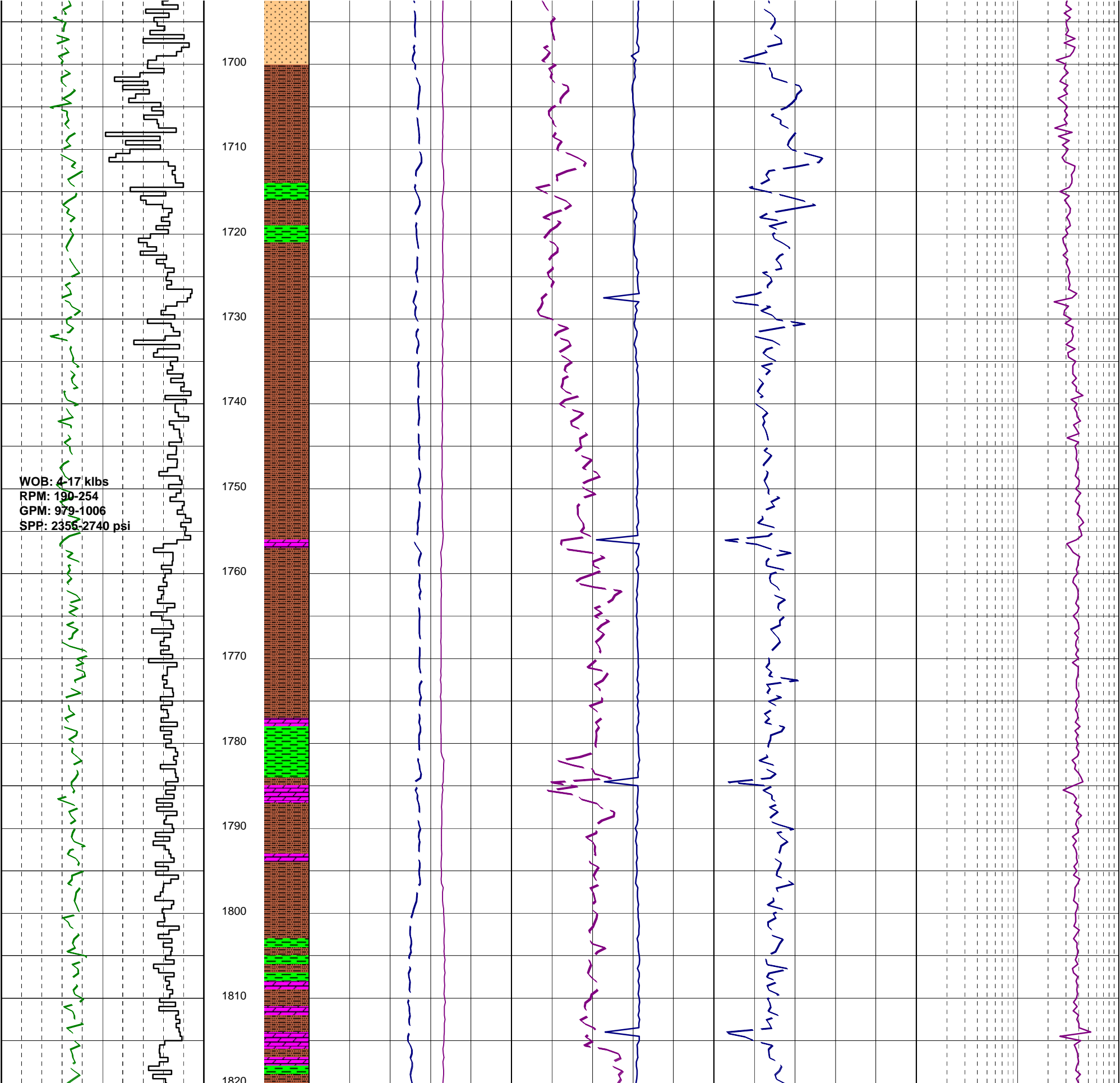
1650

1660

1670

1680

1690



WOB: 6-27
RPM: 168-253
GPM: 972-1000
SPP: 2540-2786

WOB: 6-27klbs
RPM: 168-253
GPM: 972-1000
SPP: 2546-2786psi

SLIDING: 1936m-1958m

1820
1830
1840
1850
1860
1870
1880
1890
1900
1910
1920
1930
1940

