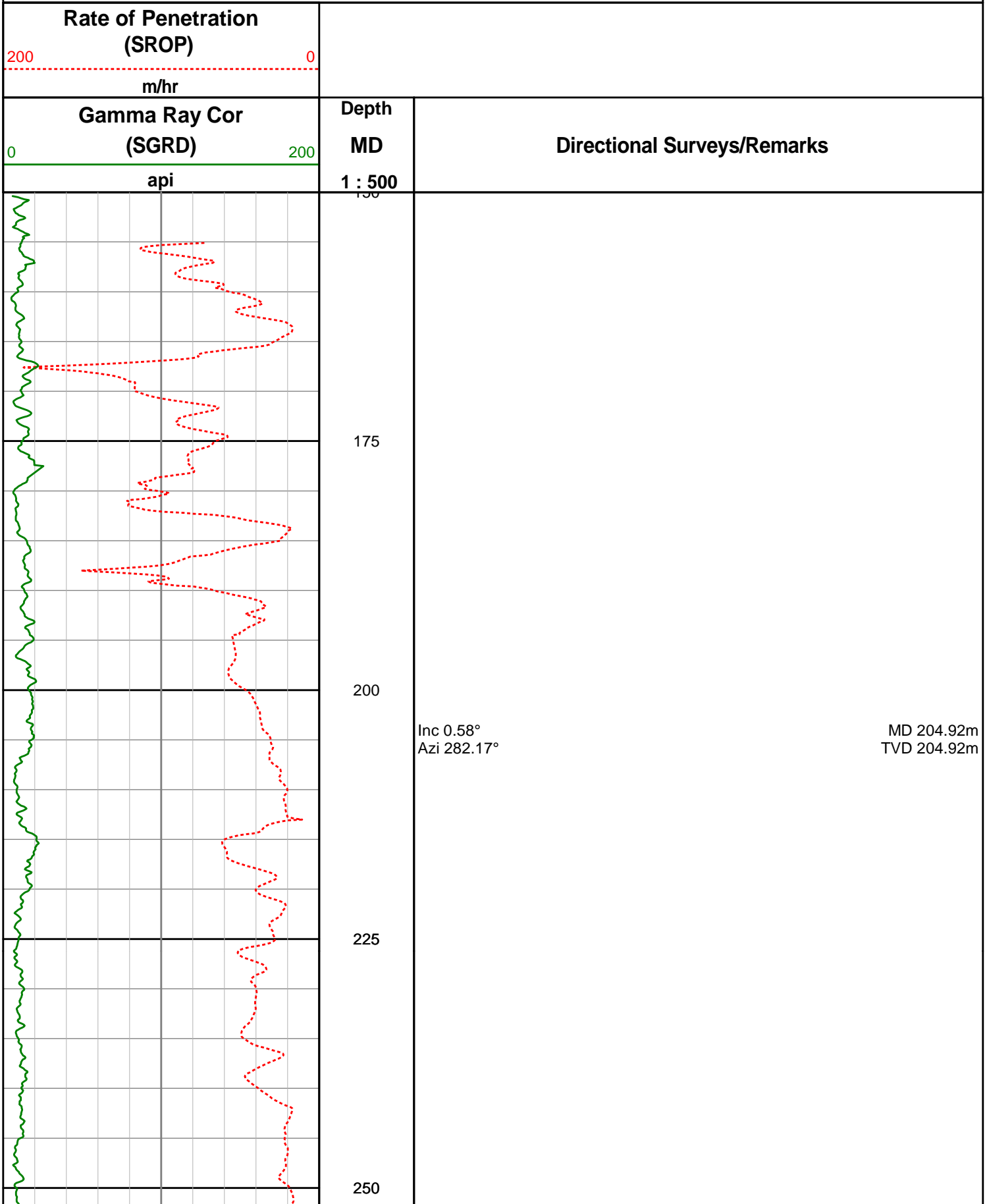
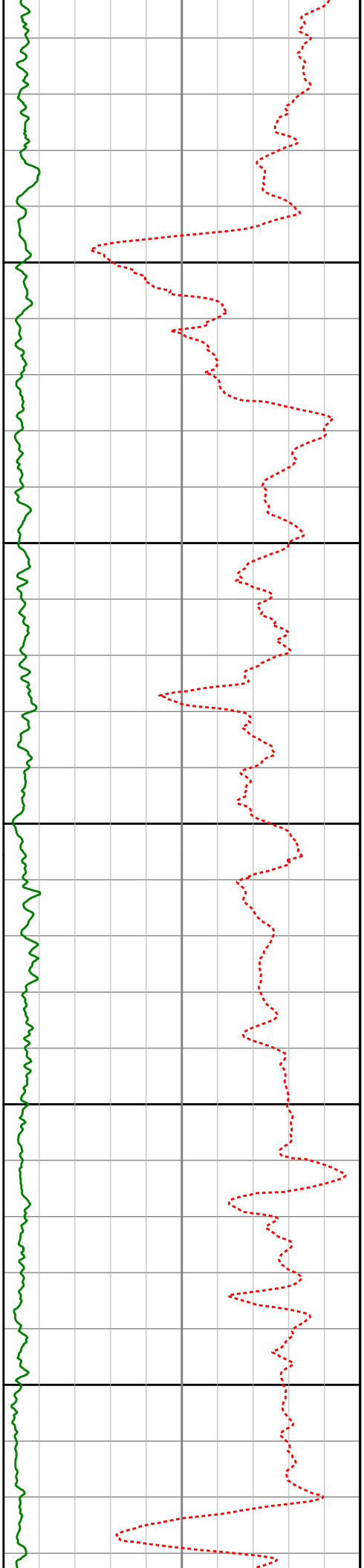


Origin Energy Ltd

Trefoil-2

Recorded LWD Data





275

Inc 0.55°
Azi 277.88°

MD 289.50m
TVD 289.49m

300

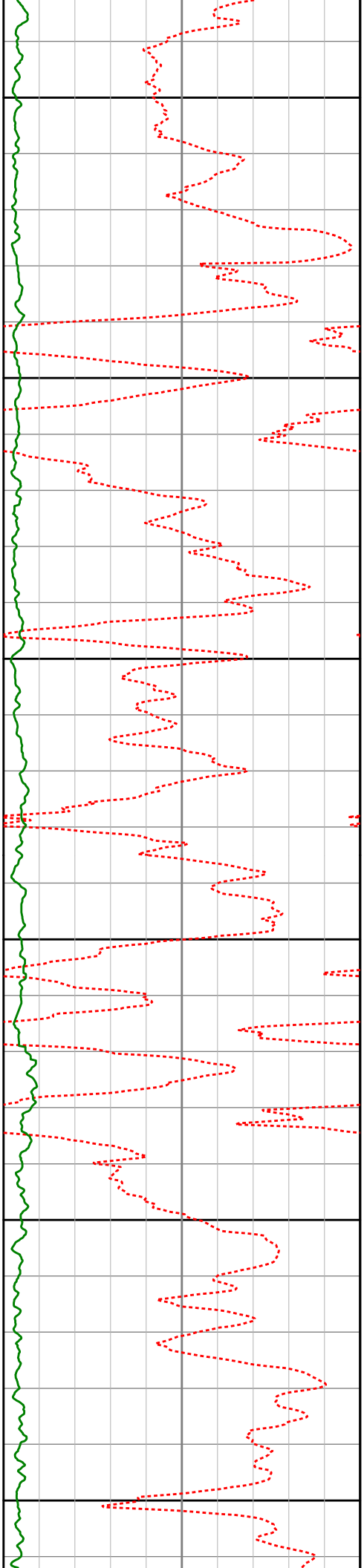
325

350

375

Inc 0.32°
Azi 238.01°

MD 376.49m
TVD 376.48m



400

425

450

475

500

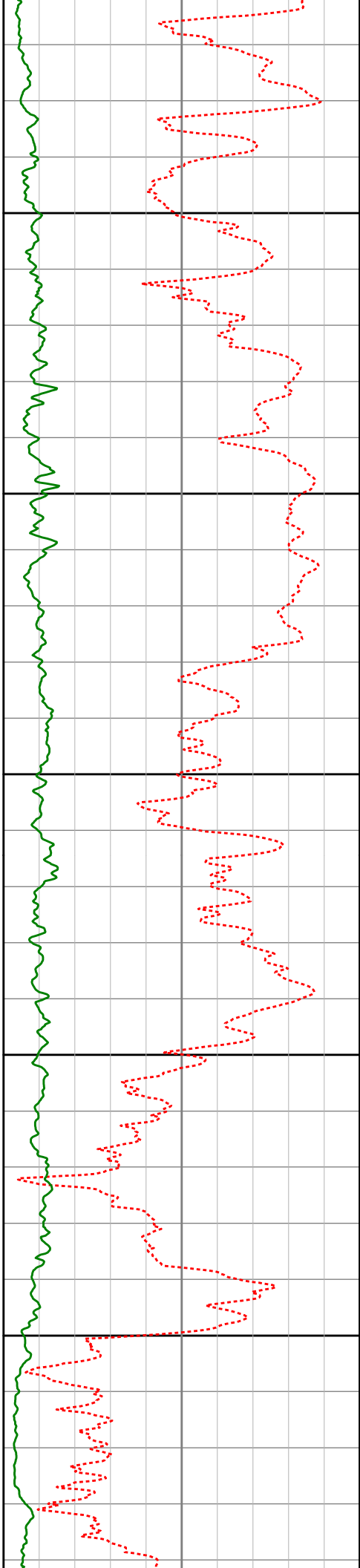
525

Inc 0.35°
Azi 232.40°

MD 435.08m
TVD 435.07m

Inc 0.72°
Azi 199.02°

MD 521.95m
TVD 521.94m



550

Inc 0.73°
Azi 193.58°

MD 547.83m
TVD 547.81m

575

Inc 0.69°
Azi 195.91°

MD 579.00m
TVD 578.98m

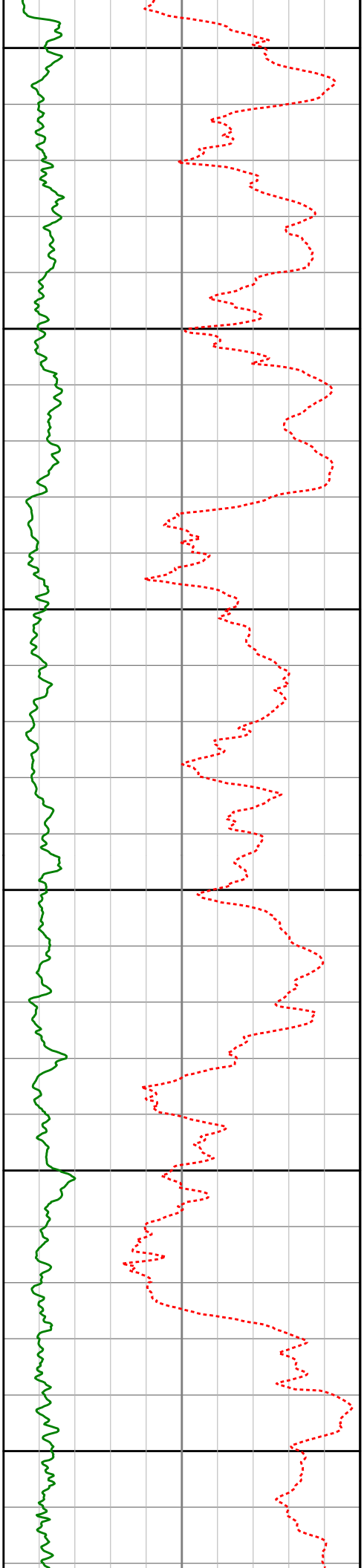
600

625

650

Inc 0.36°
Azi 203.20°

MD 665.44m
TVD 665.42m



675

700

725

750

775

800

Inc 0.33°
Azi 233.04°

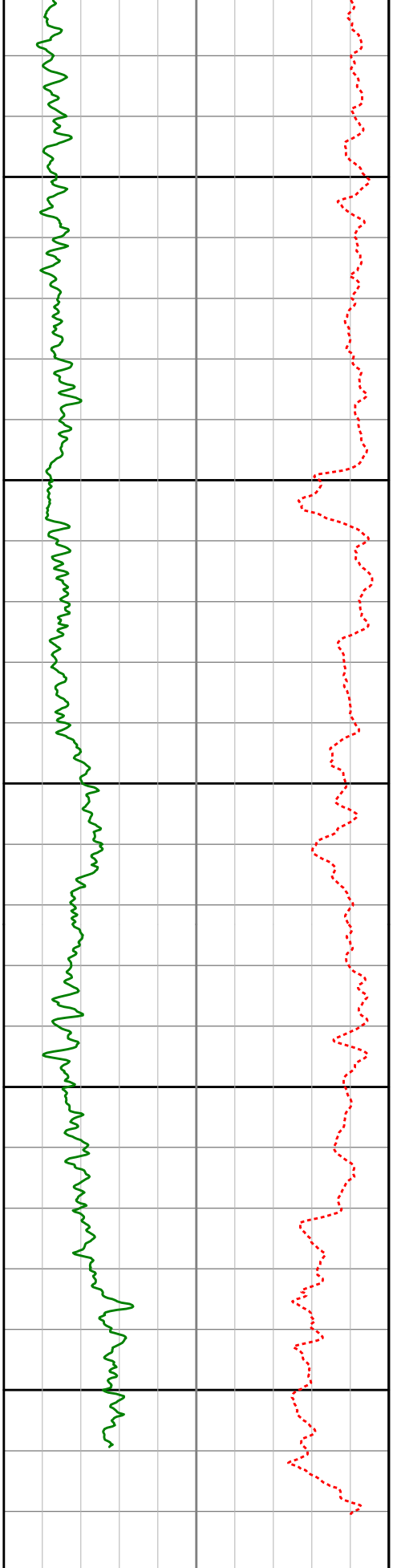
MD 747.09m
TVD 747.07m

Inc 0.57°
Azi 208.65°

MD 775.15m
TVD 775.12m

Inc 0.67°
Azi 192.10°

MD 782.28m
TVD 782.26m



	Inc 0.66° Azi 196.82°	MD 812.12m TVD 812.09m
825		
850		
875	Inc 0.30° Azi 224.95°	MD 868.19m TVD 868.16m
900	Inc 1.03° Azi 195.99°	MD 896.77m TVD 896.74m
925	Inc 0.71° Azi 183.94°	MD 925.97m TVD 925.94m

Gamma Ray Cor (SGRD) 0 200 <hr style="border: 1px solid green;"/> api	Depth MD 1 : 500	Directional Surveys/Remarks
---	---	------------------------------------

**Rate of Penetration
(SROP)**

200

0

m/hr