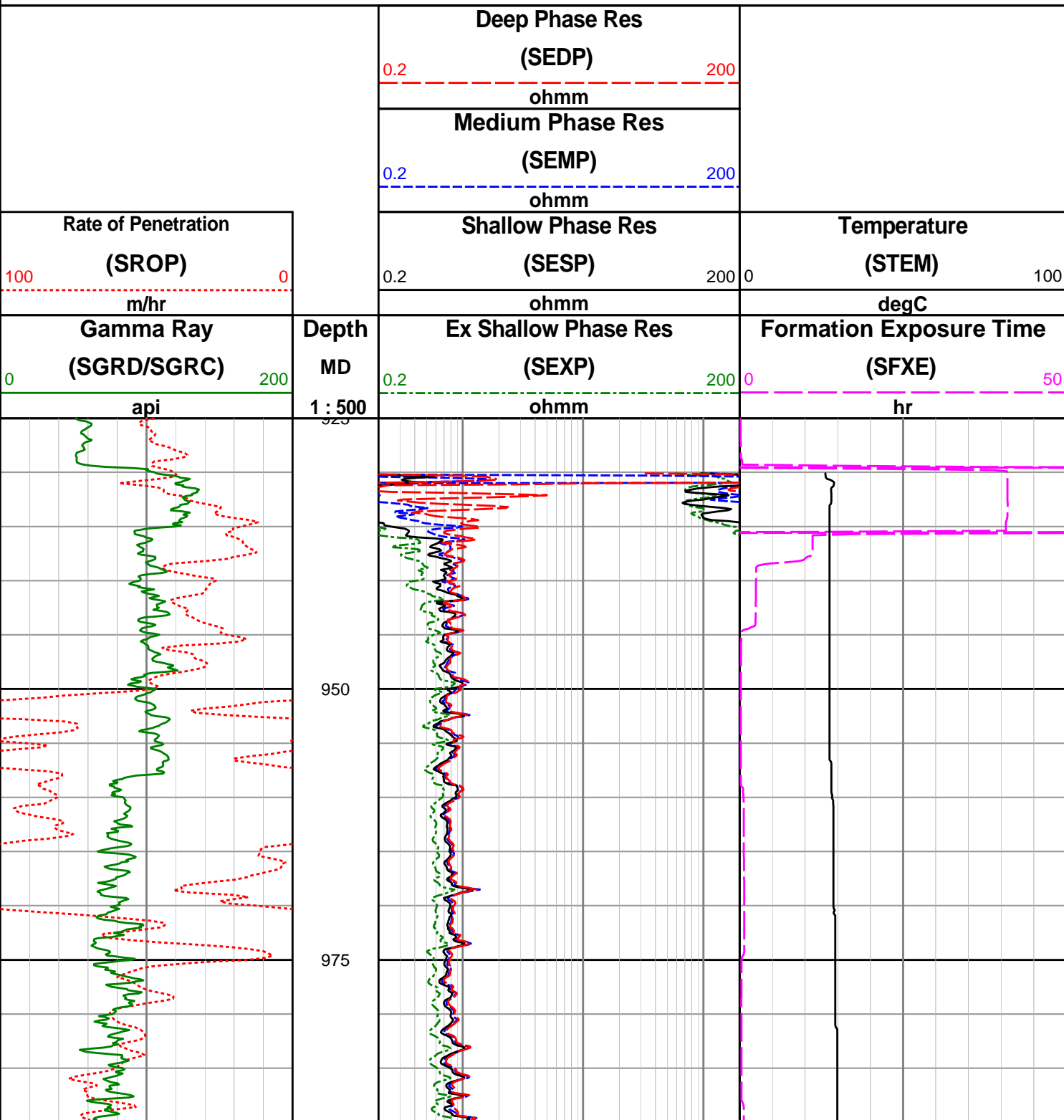


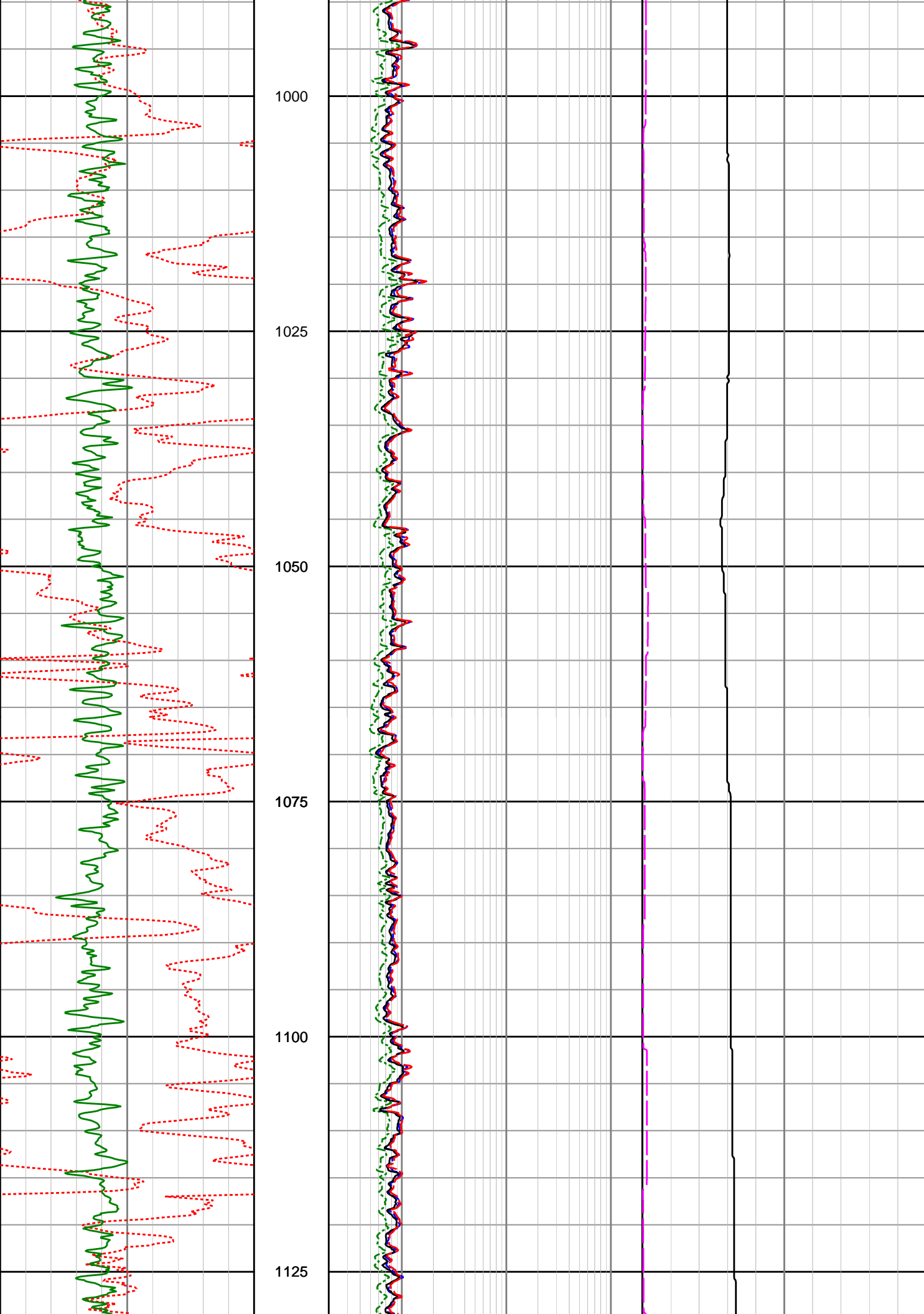
Origin Energy Ltd

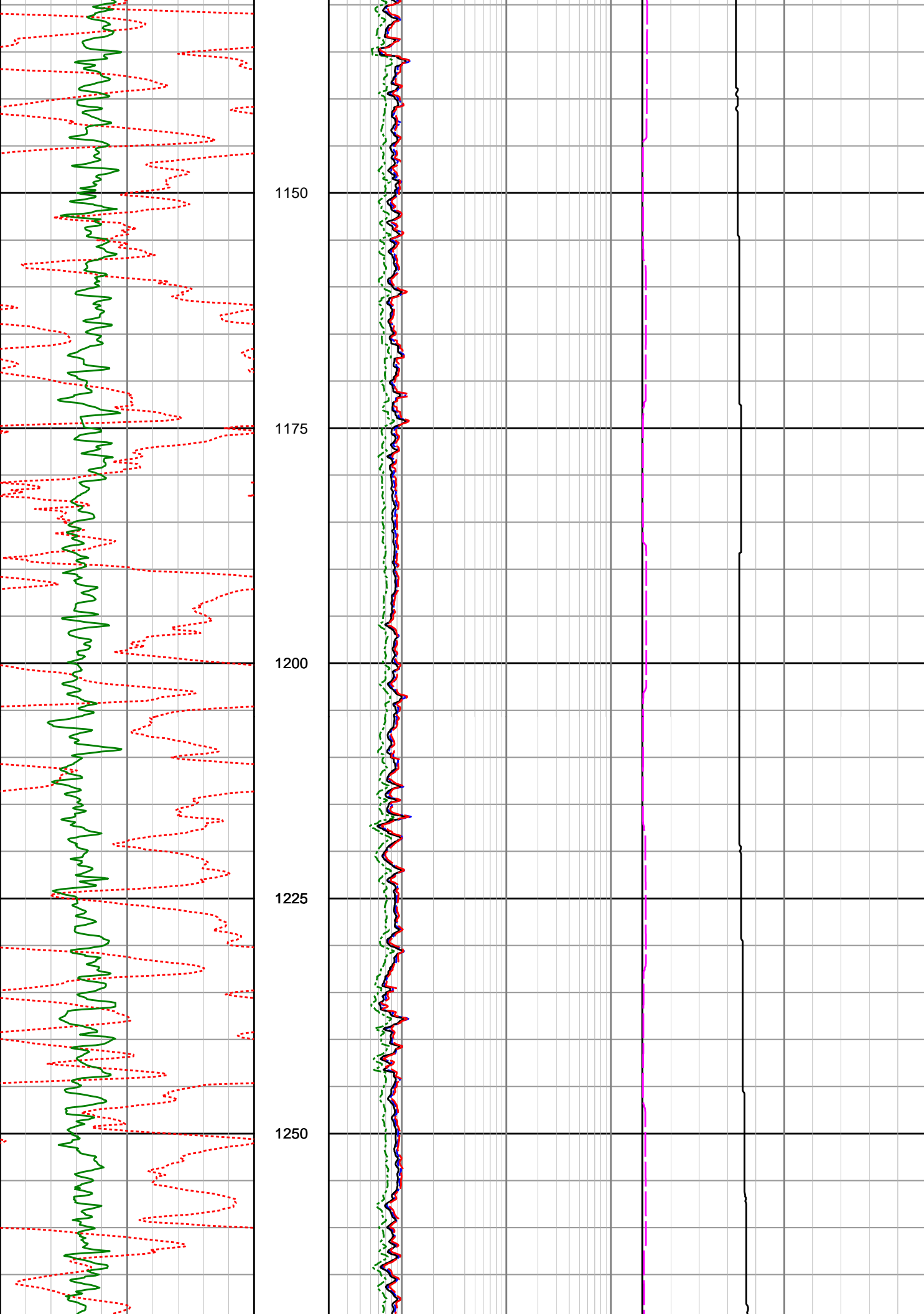
Trefoil-2

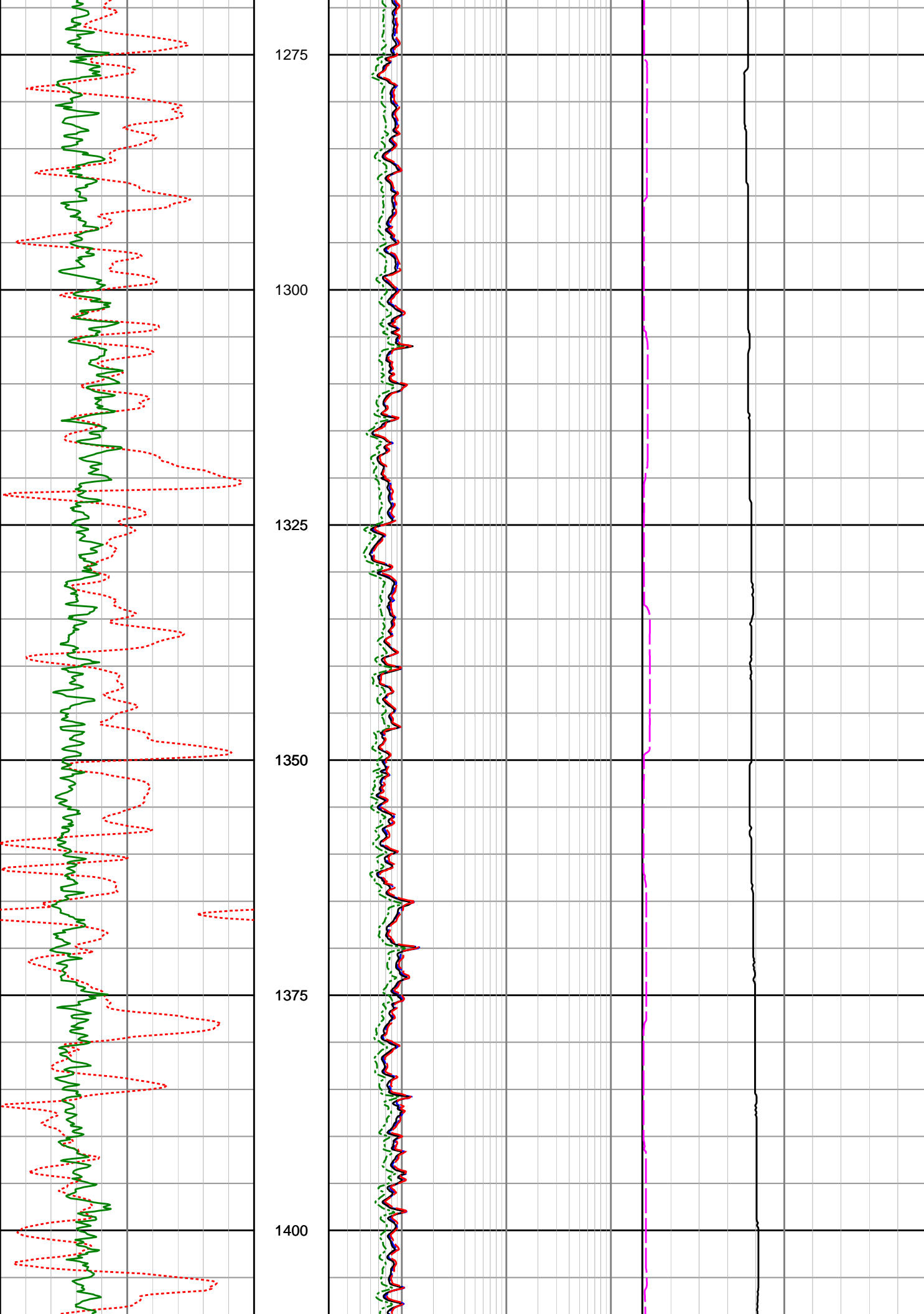
Recorded LWD Data

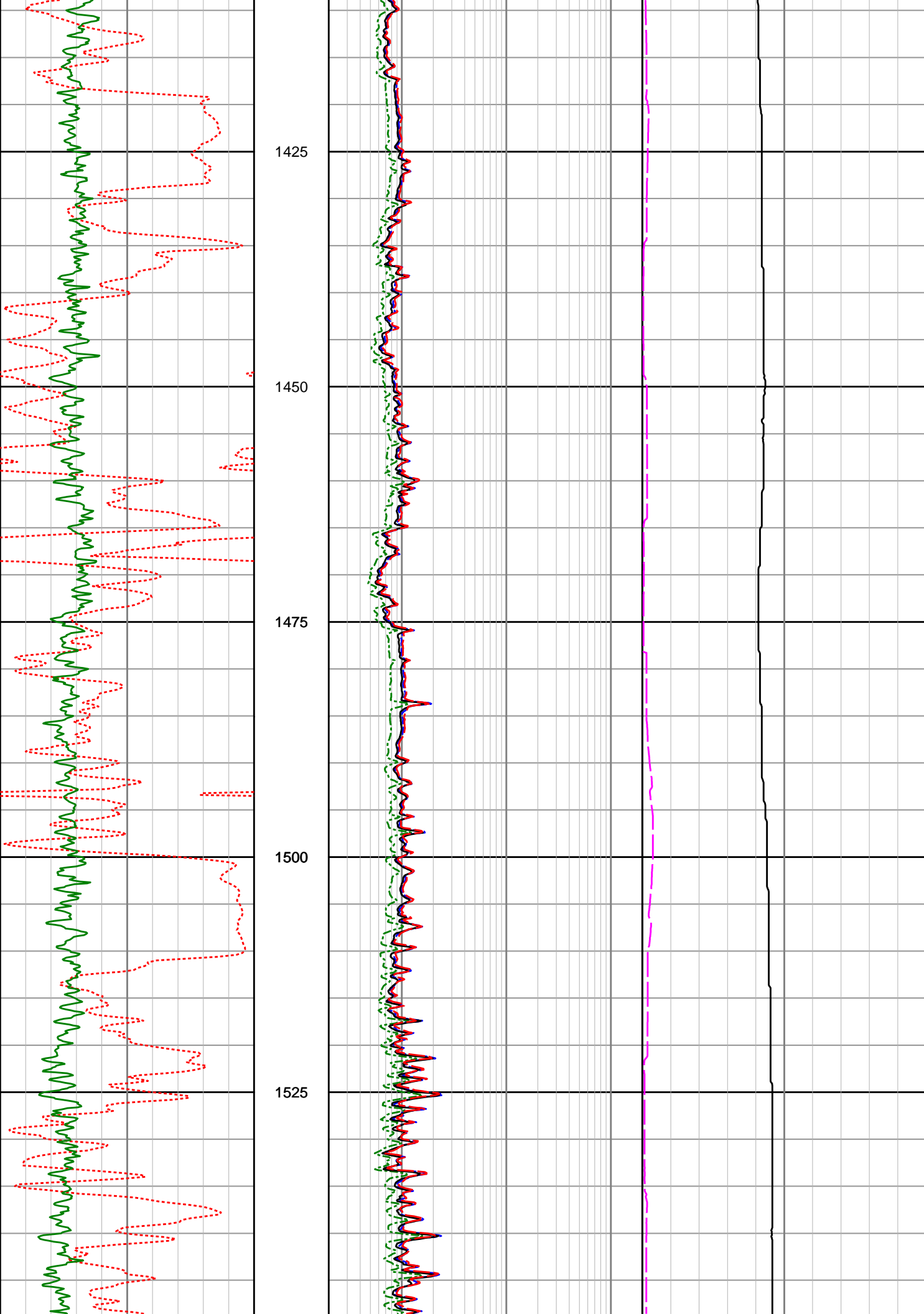
Gamma Ray from 150.0 to 929.6 mMDRT was obtained using Pressure Case Gamma (PCG)

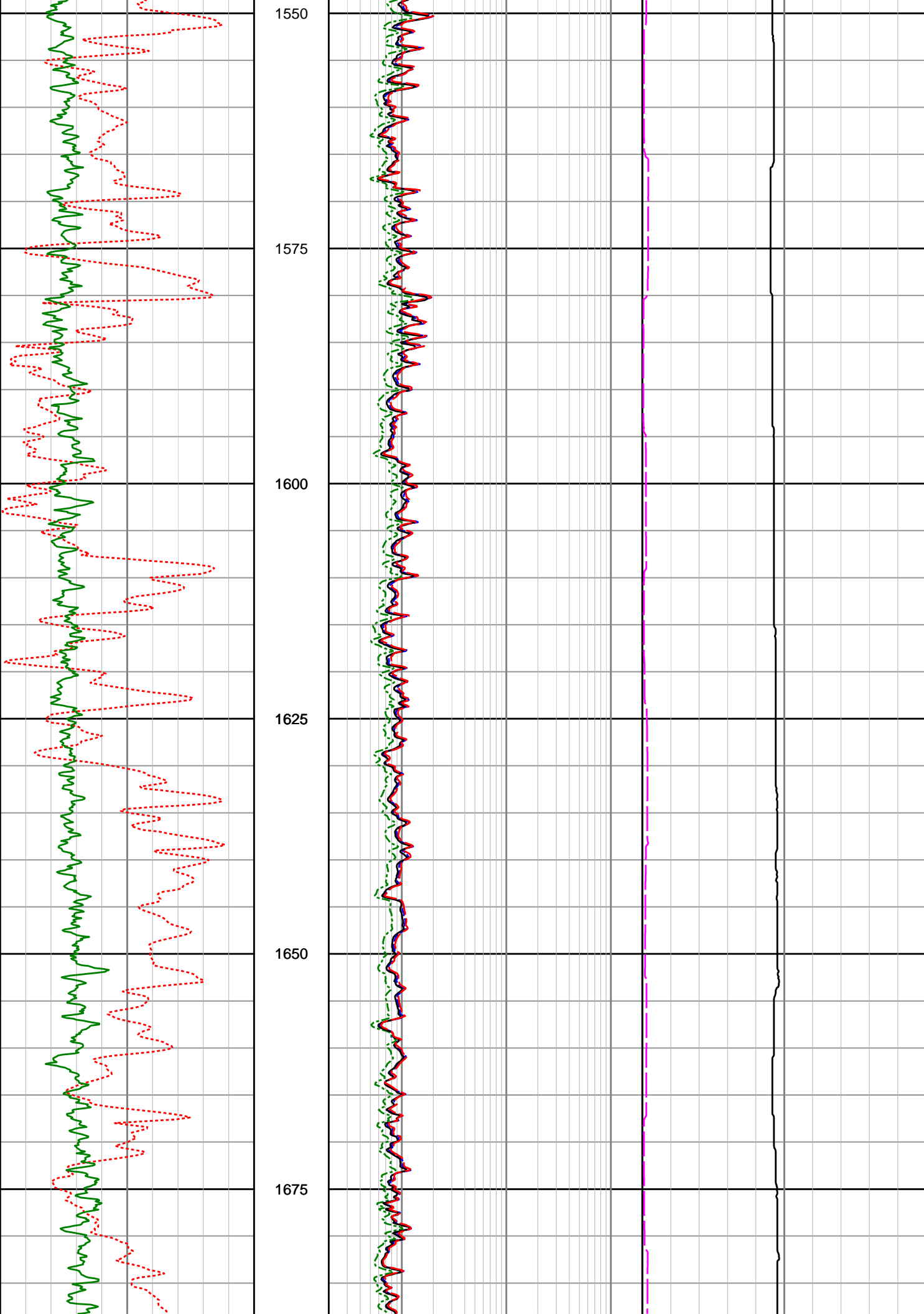


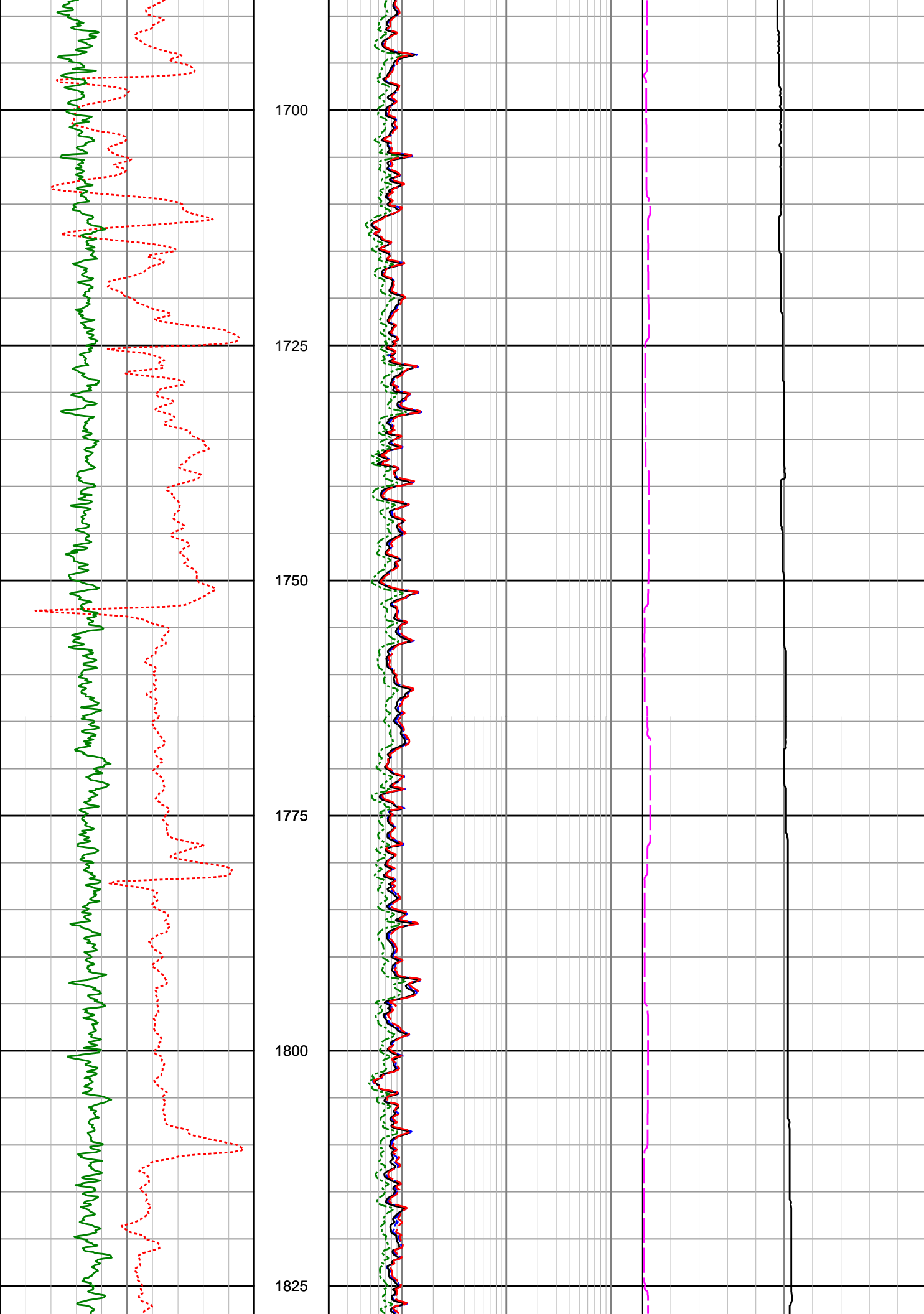


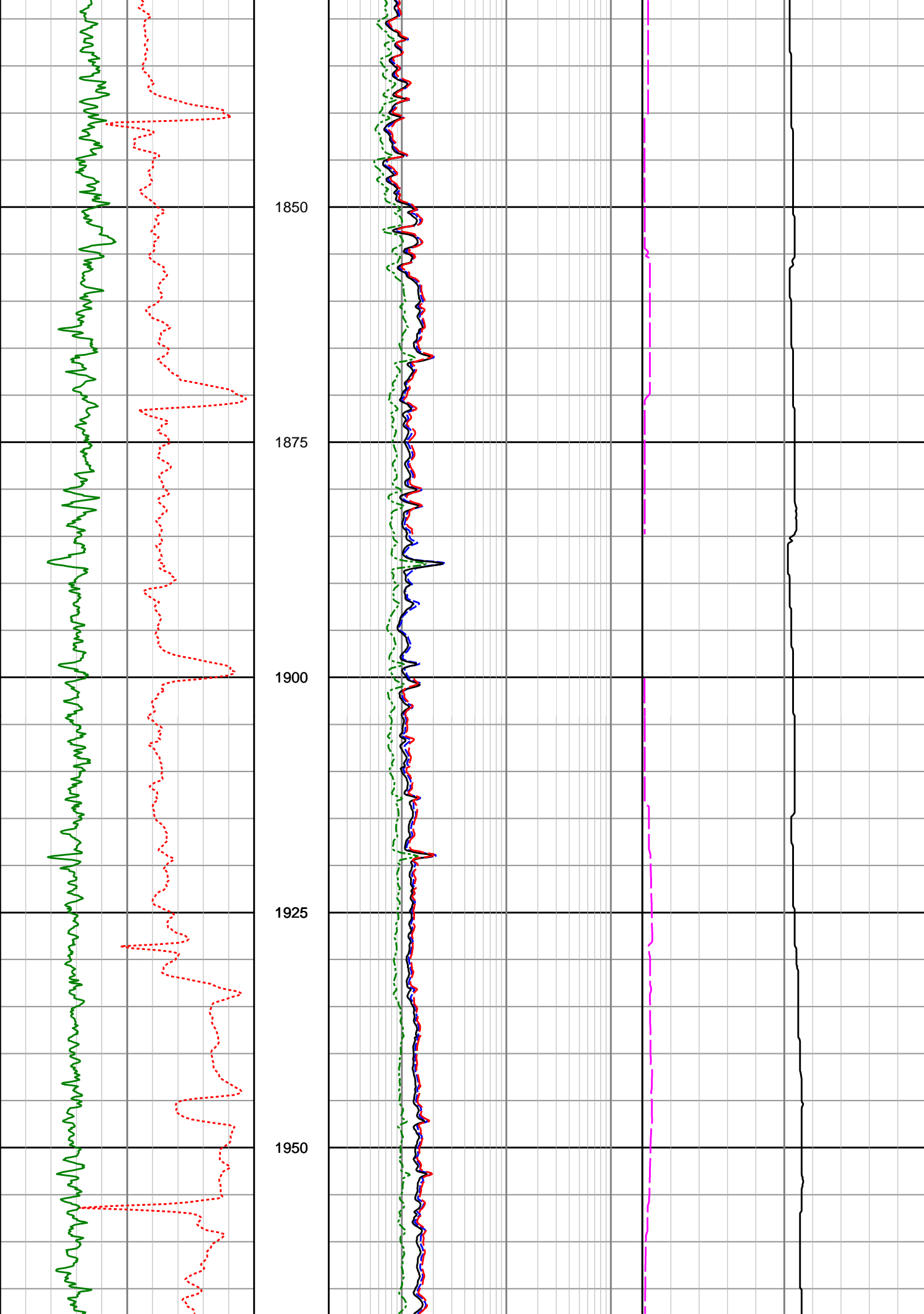


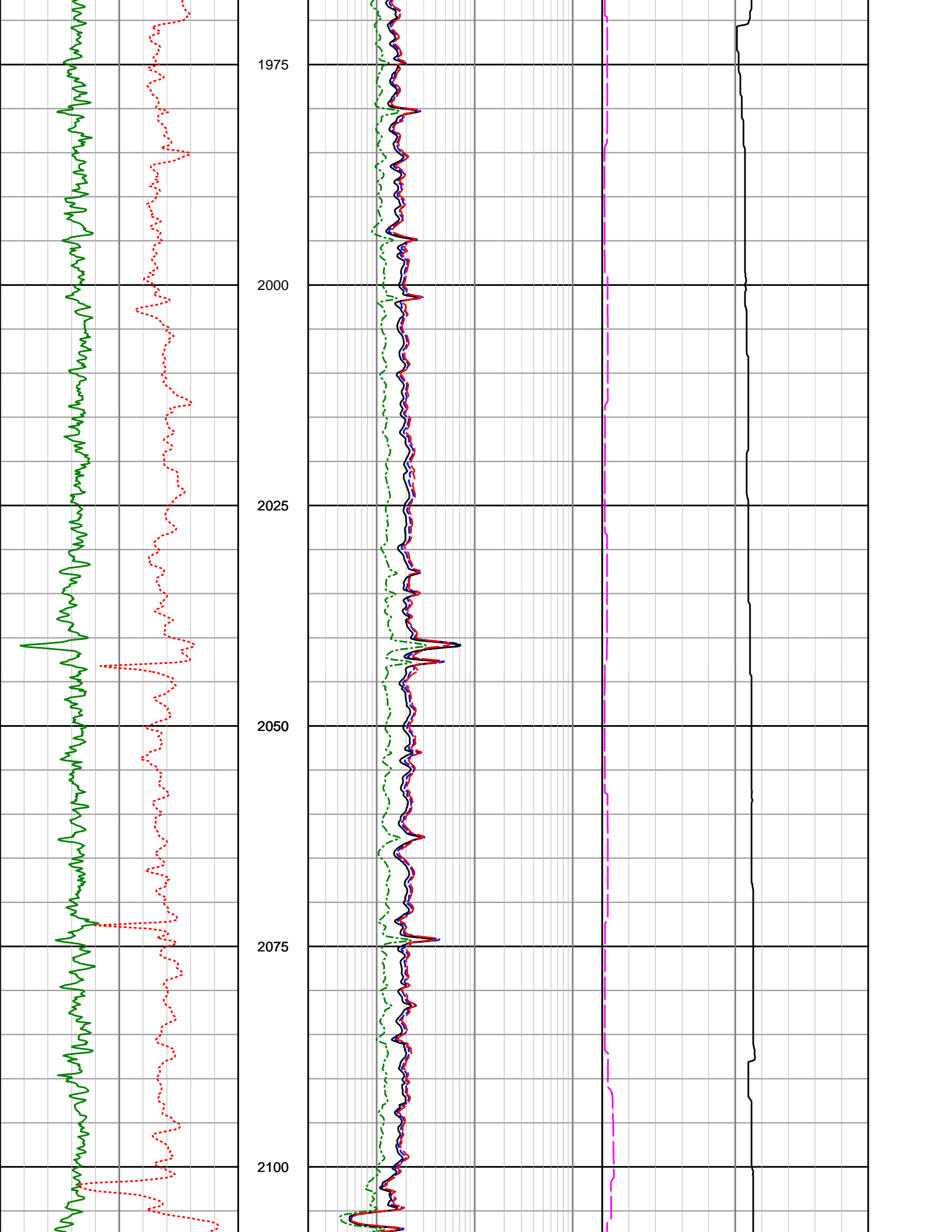


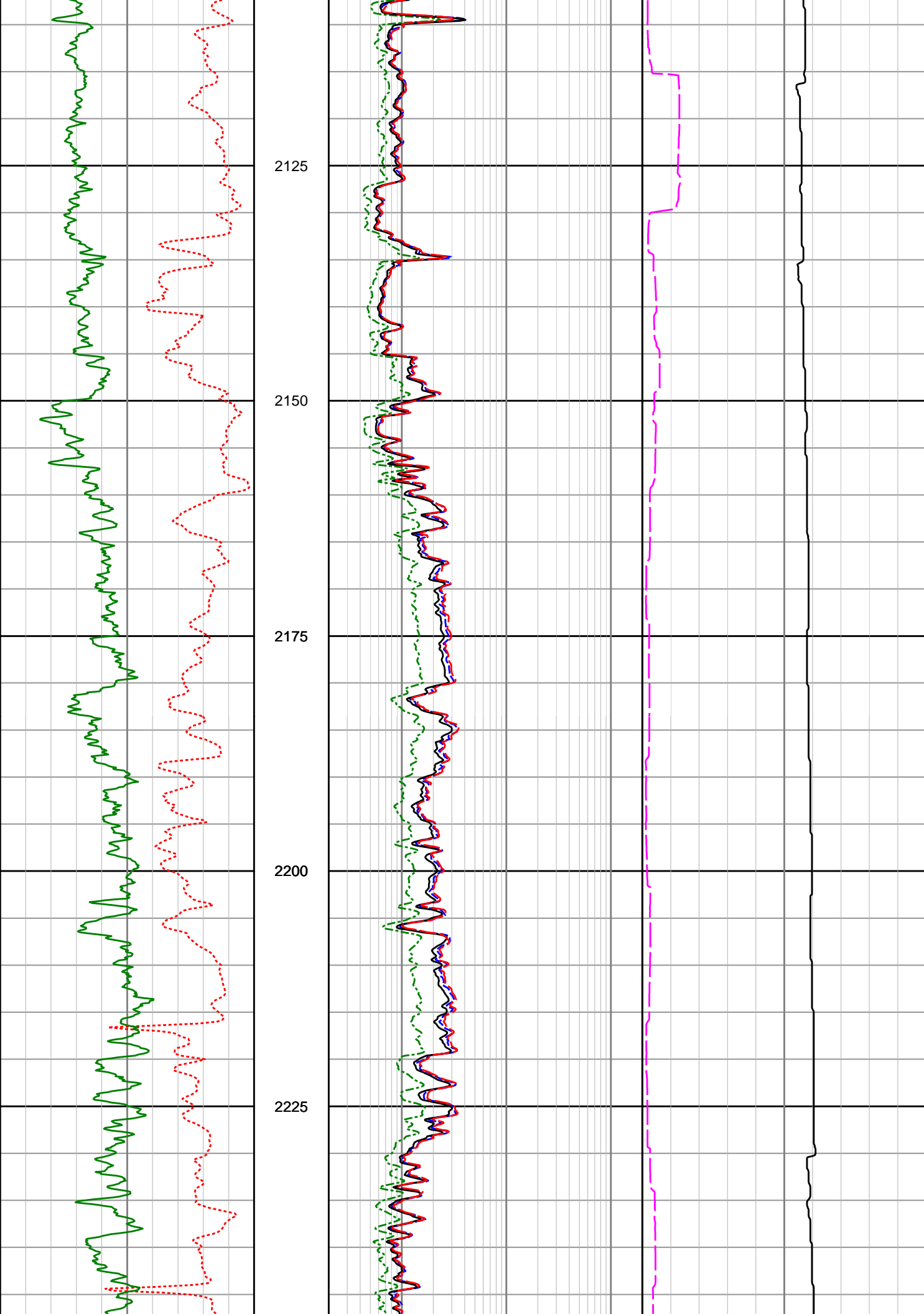


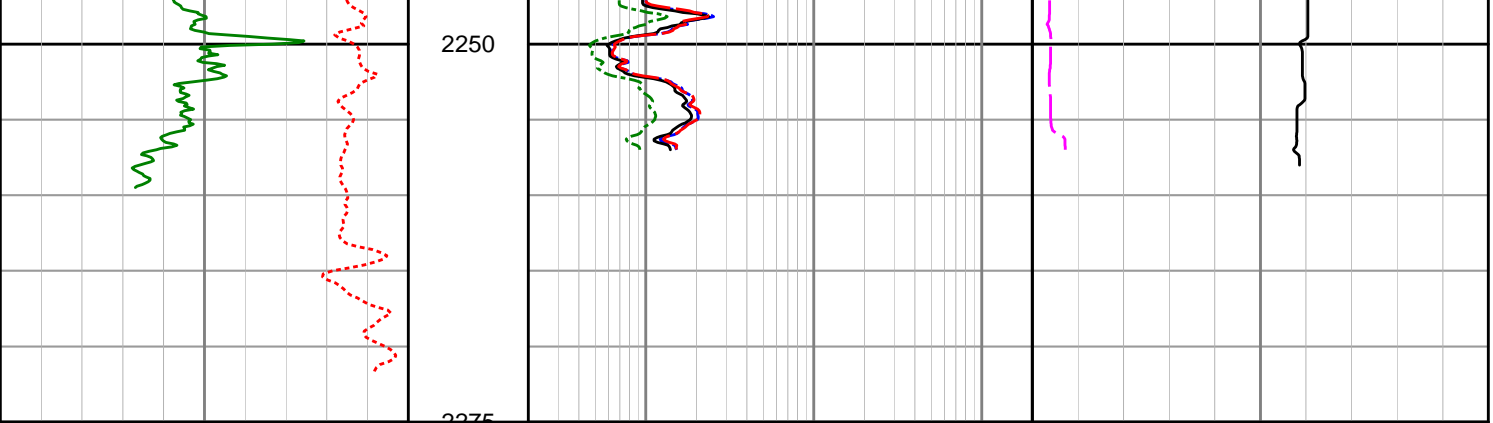












<p>Gamma Ray (SGRD/SGRC) api</p> <p>0 200</p>	<p>Depth MD 1 : 500</p>	<p>Ex Shallow Phase Res (SEXP) ohmm</p> <p>0.2 200</p>	<p>Formation Exposure Time (SFXE) hr</p> <p>0 50</p>
<p>Rate of Penetration (SROP) m/hr</p> <p>100 0</p>		<p>Shallow Phase Res (SESP) ohmm</p> <p>0.2 200</p>	<p>Temperature (STEM) degC</p> <p>0 100</p>
		<p>Medium Phase Res (SEMP) ohmm</p> <p>0.2 200</p>	
		<p>Deep Phase Res (SEDP) ohmm</p> <p>0.2 200</p>	