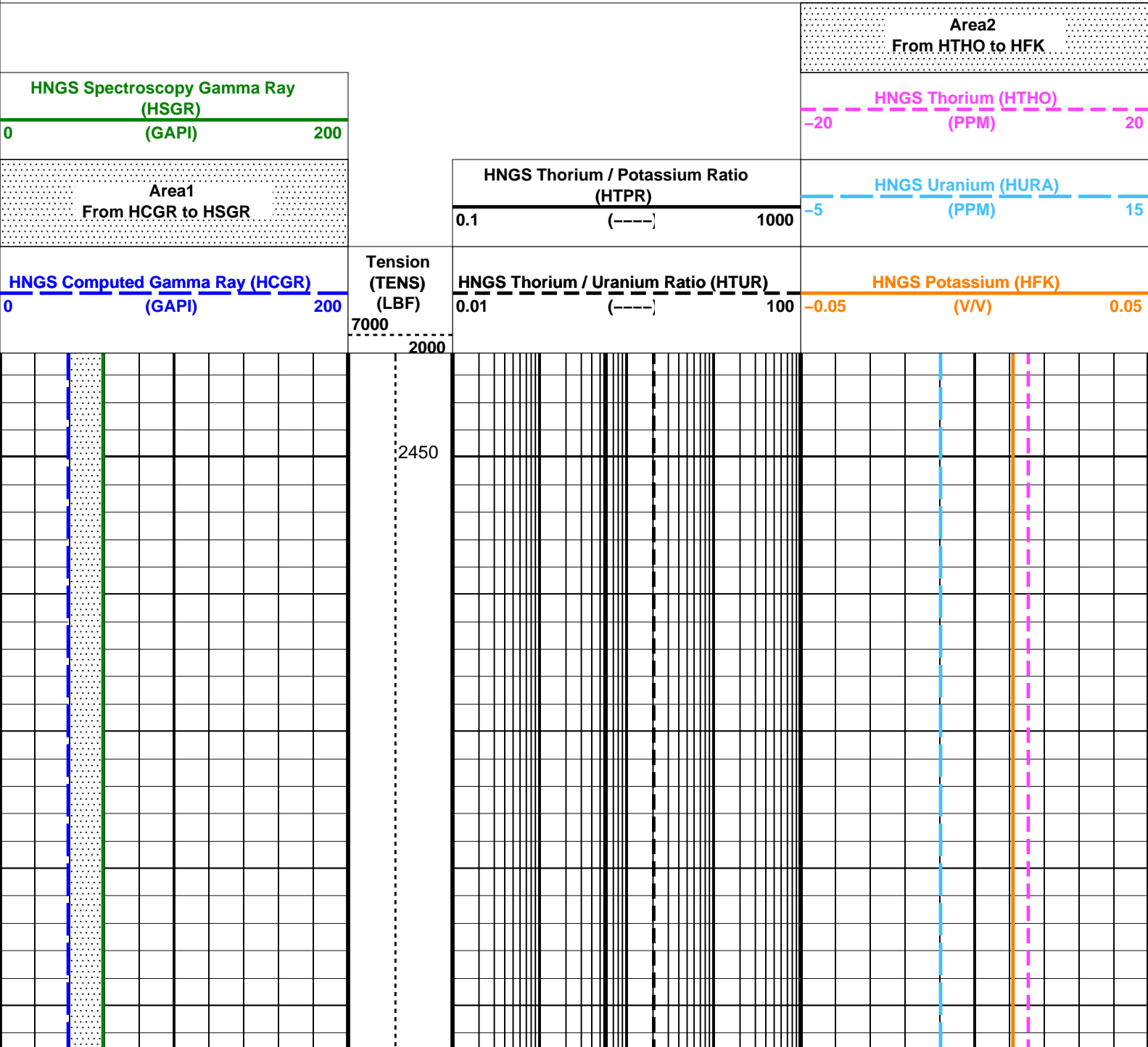
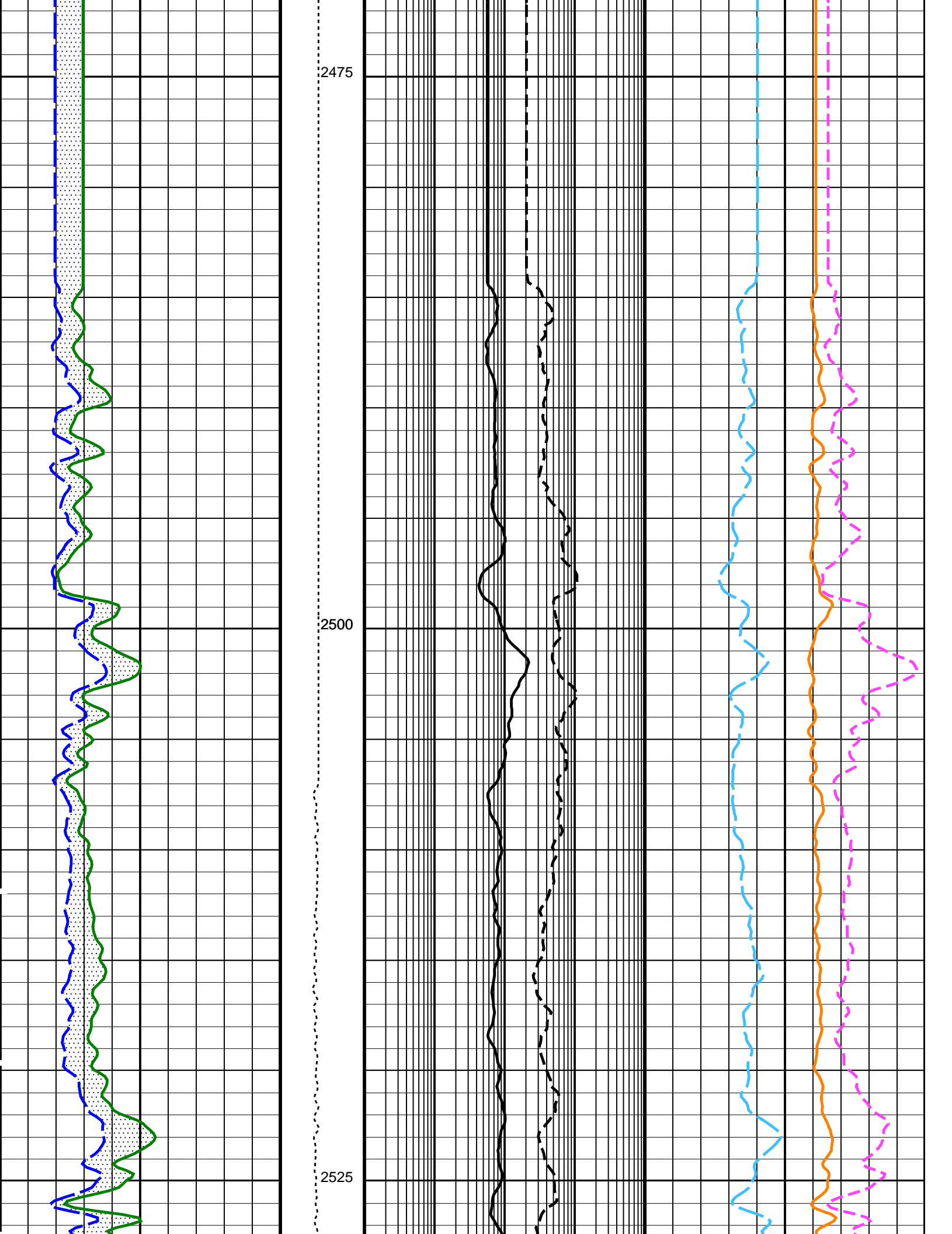


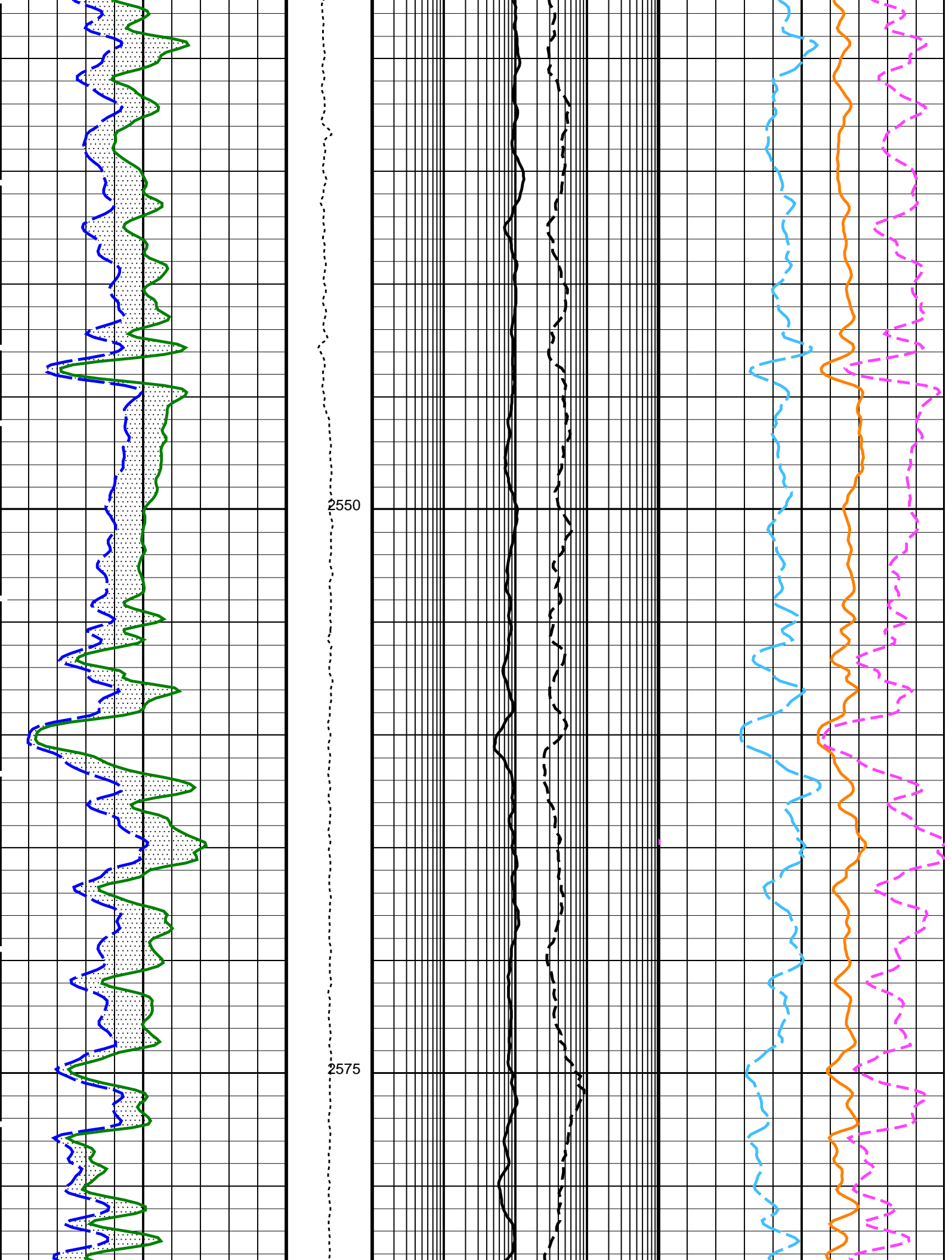
Input DLIS Files						
DEFAULT	HRLA_TLD_MCFL_CNL_069LUP	FN:71	PRODUCER	18-Nov-2009 23:38	3227.8 M	2473.6 M
Output DLIS Files						
DEFAULT	HRLA_TLD_MCFL_CNL_071PUP	FN:75	PRODUCER	19-Nov-2009 01:28	3230.1 M	2446.0 M
RTBUP	HRLA_TLD_MCFL_CNL_071PUP	FN:76	PRODUCER	19-Nov-2009 01:28	3230.1 M	2446.0 M

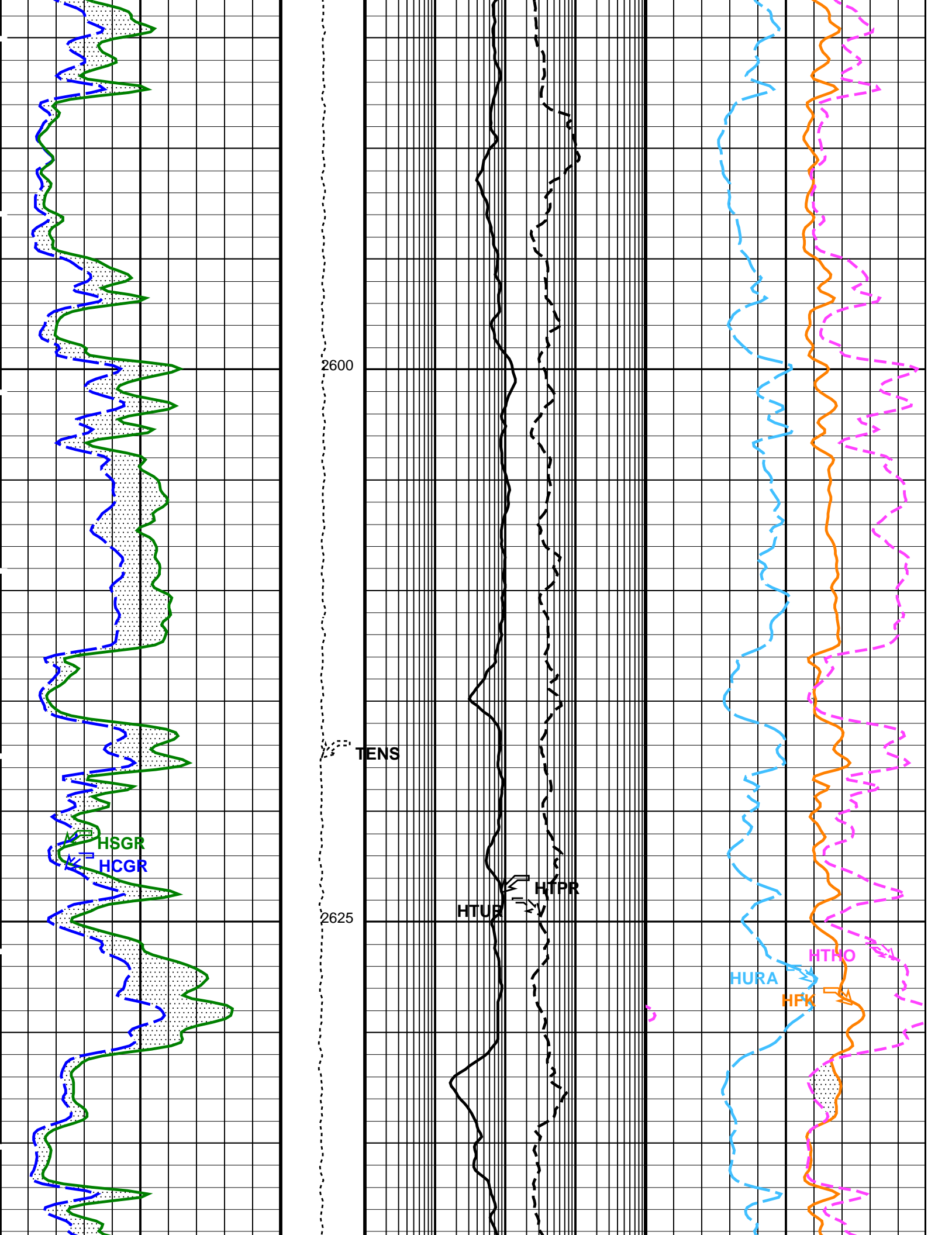
OP System Version: 17C0-154						
SPA-A	17C0-154		HRLT-B	17C0-154		
HILTH-FTB	17C0-154		HNGC-B	17C0-154		
HNGS-BA	SPC-3867-NUCL		CMRT-B	SPC-3874-CMR		
EDTC-B	SKK-3882-EDTCB					

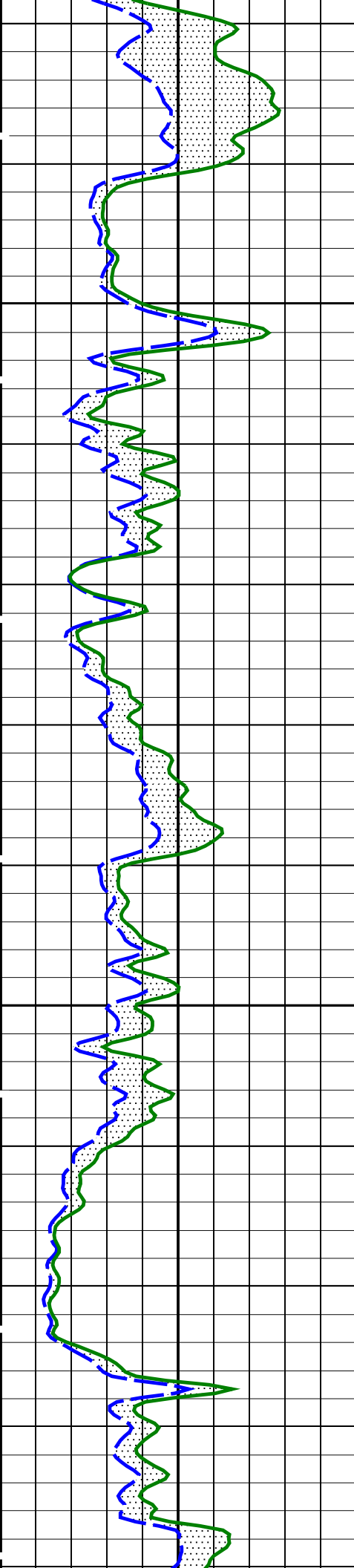
PIP SUMMARY						
Time Mark Every 60 S						





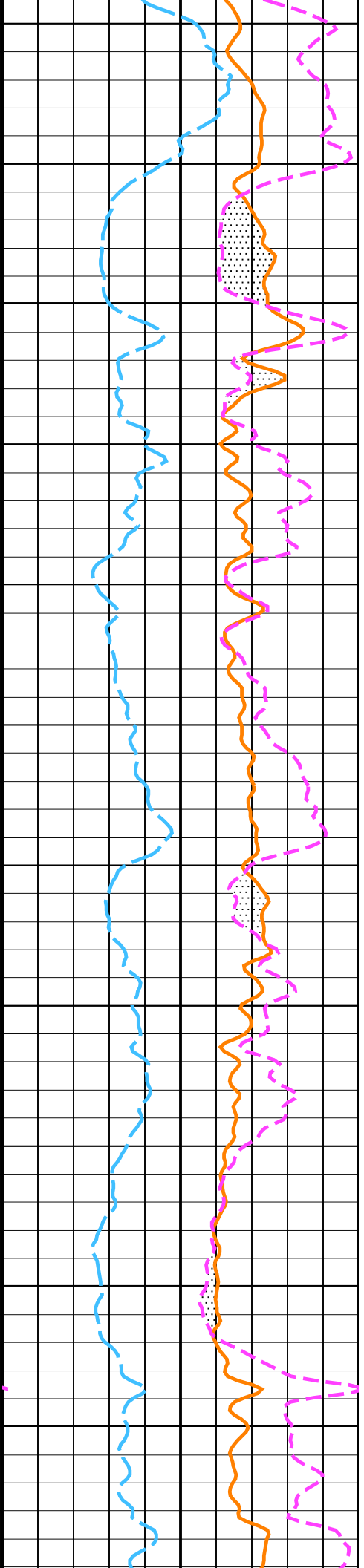
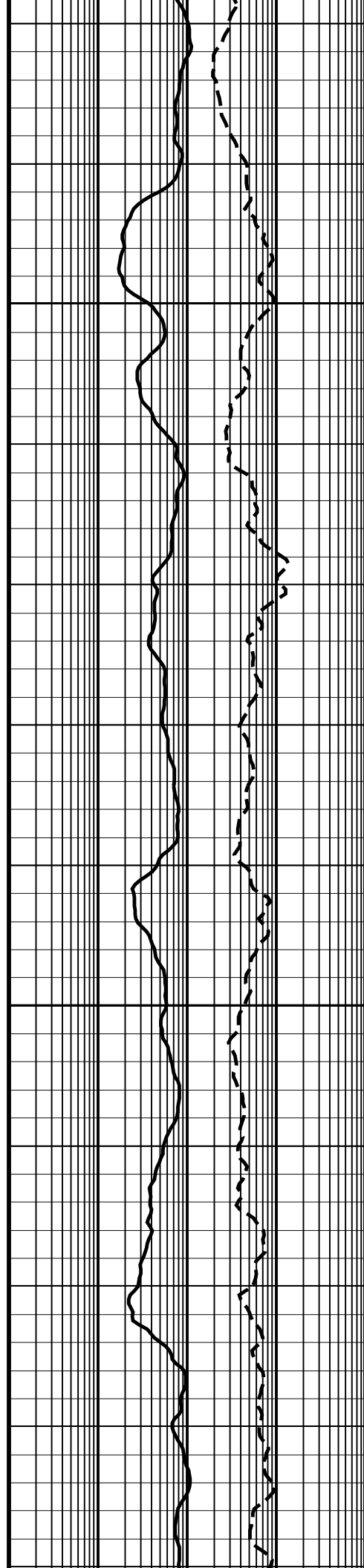


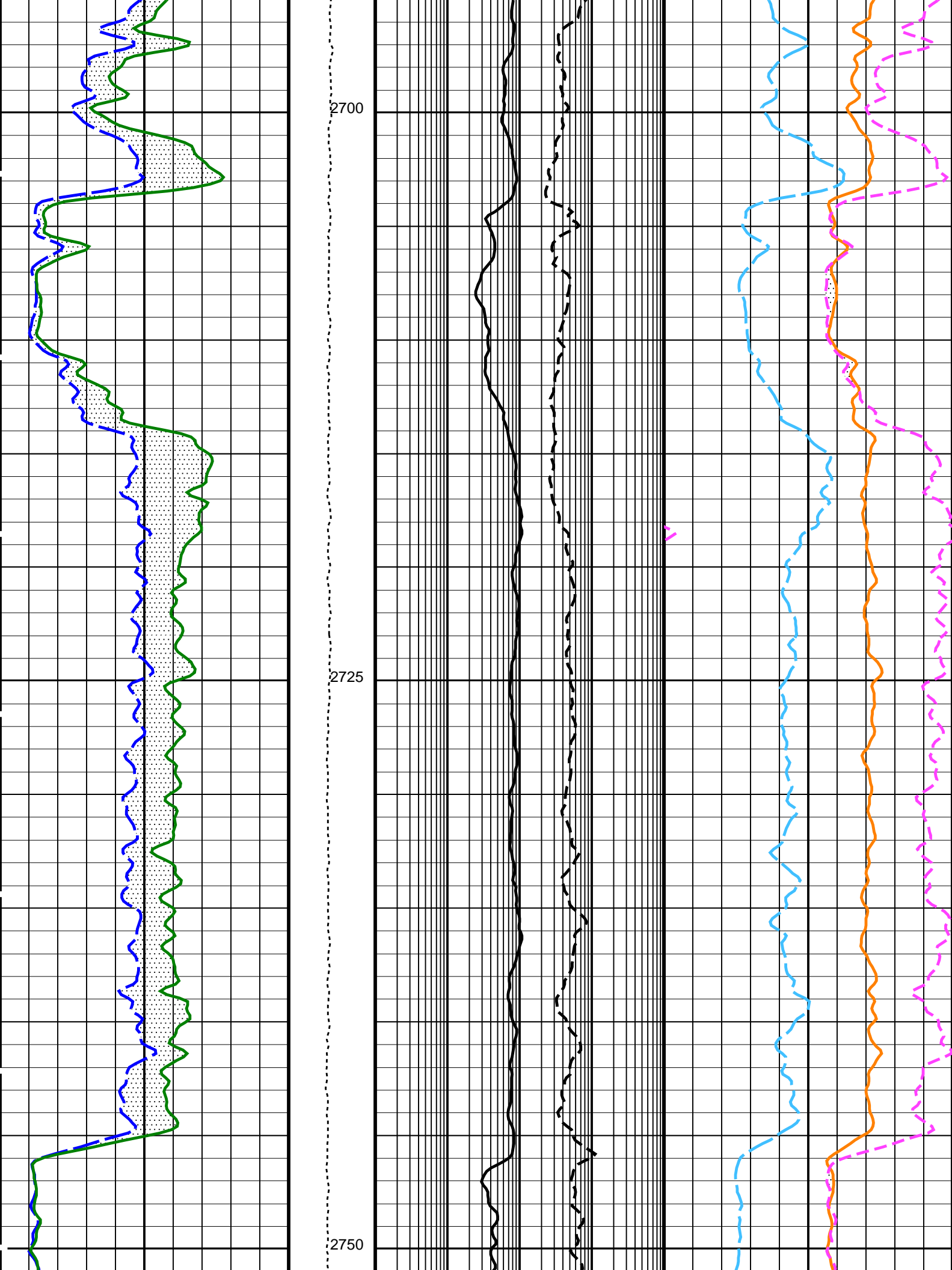


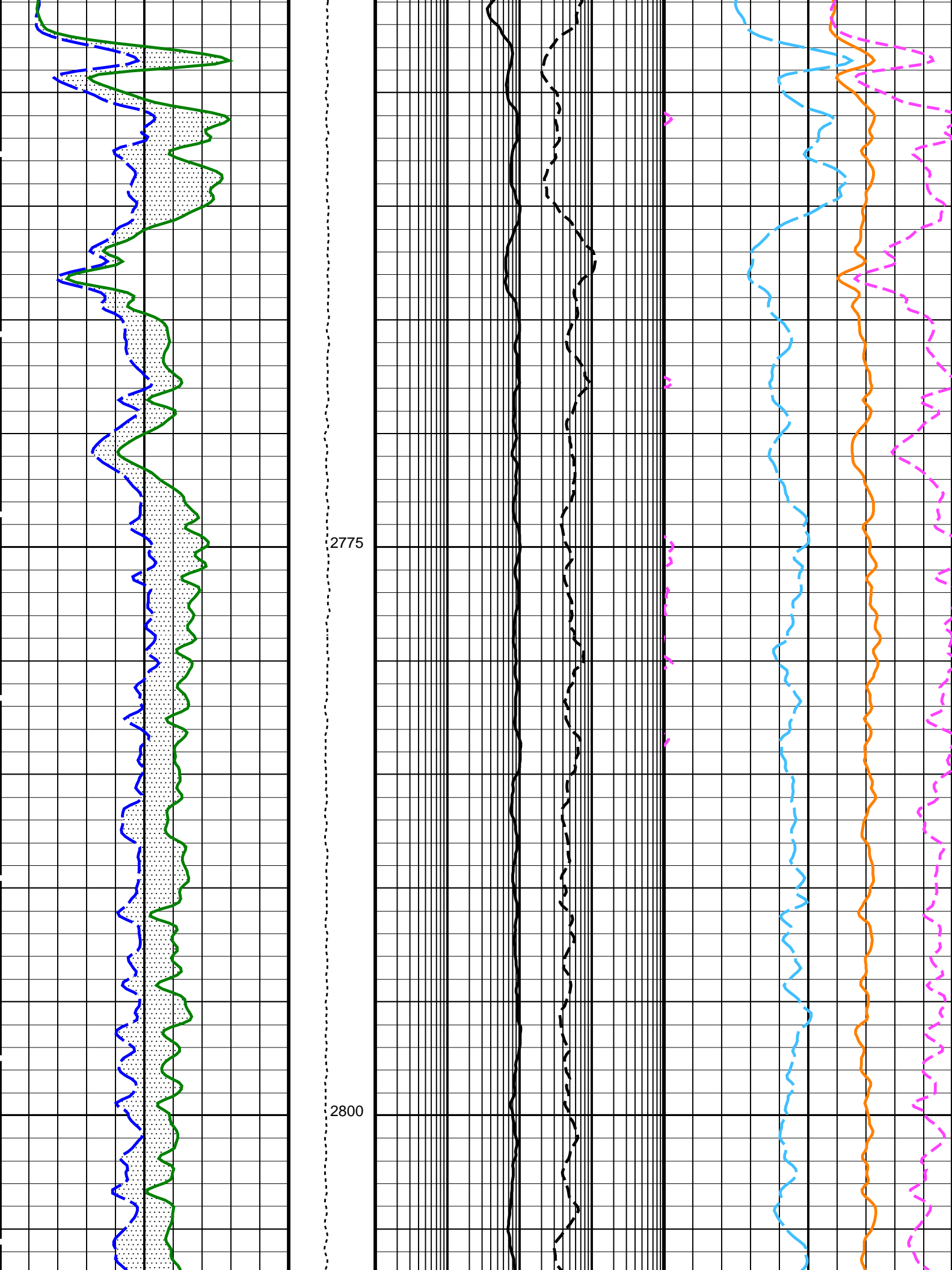


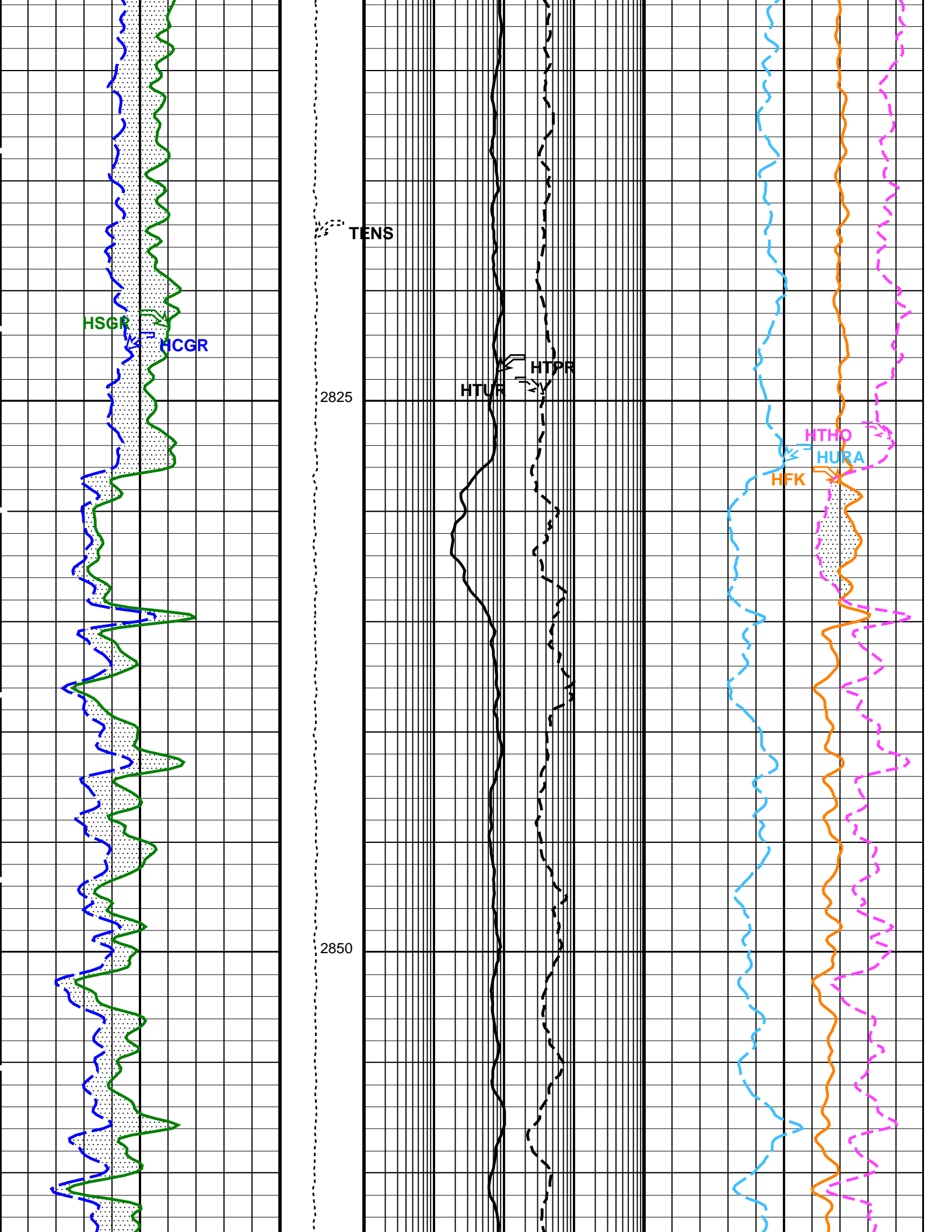
2650

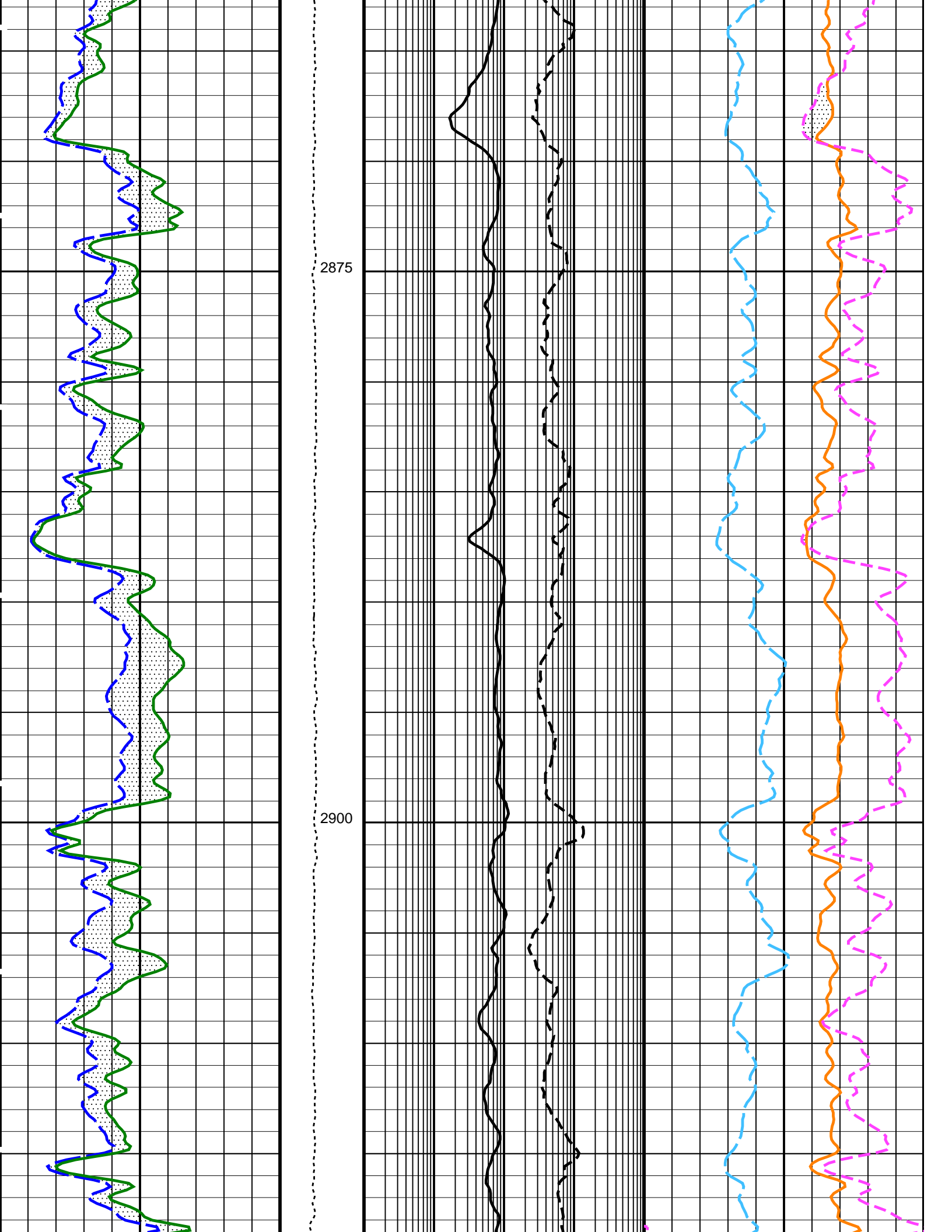
2675

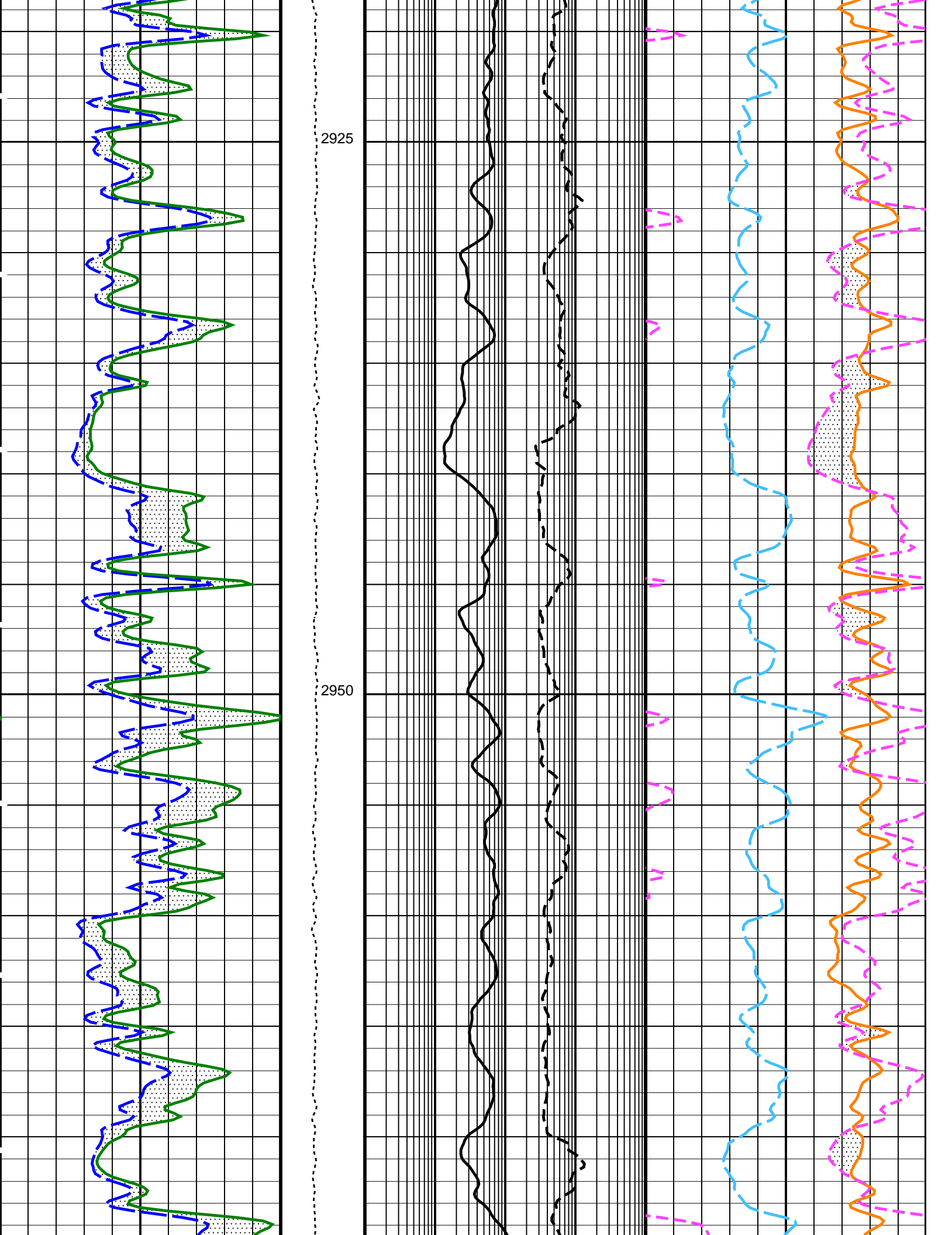


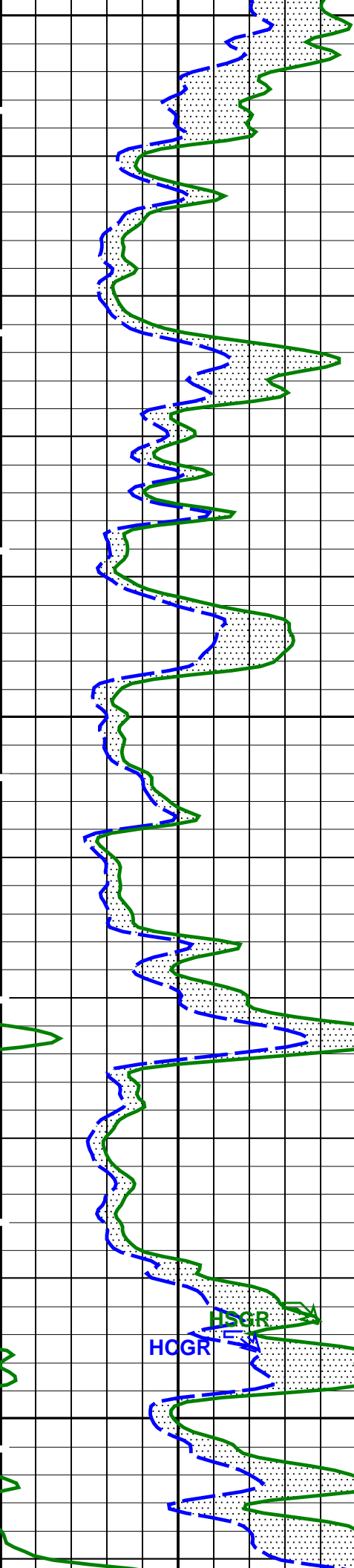










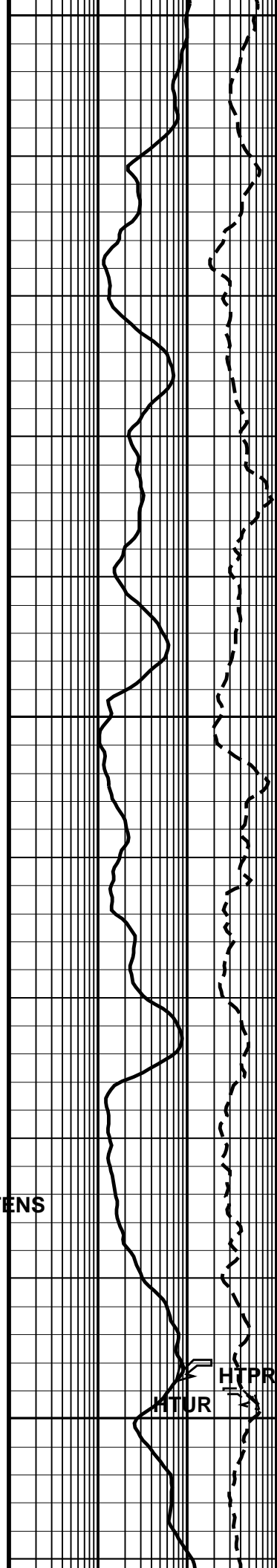


2975

3000

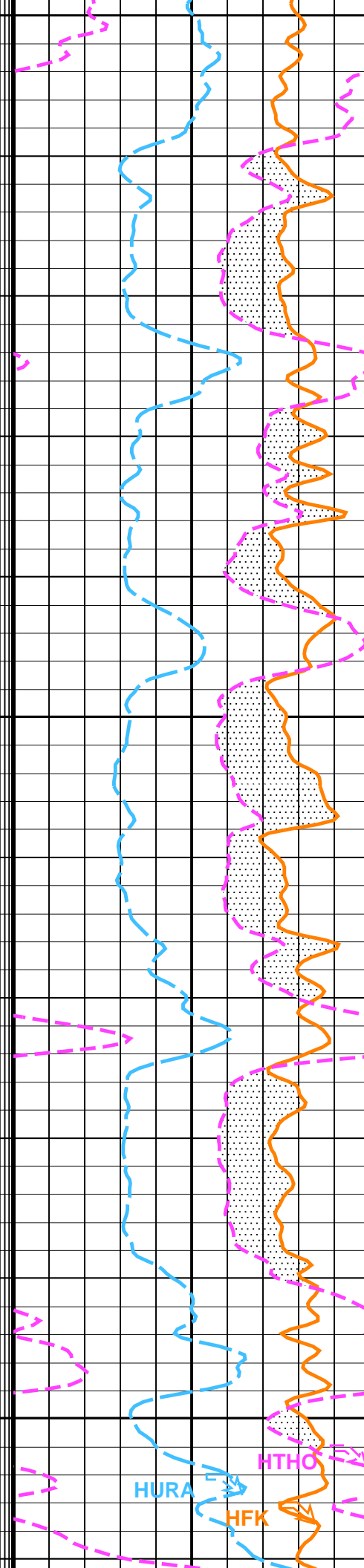
3025

TENS



HTUR

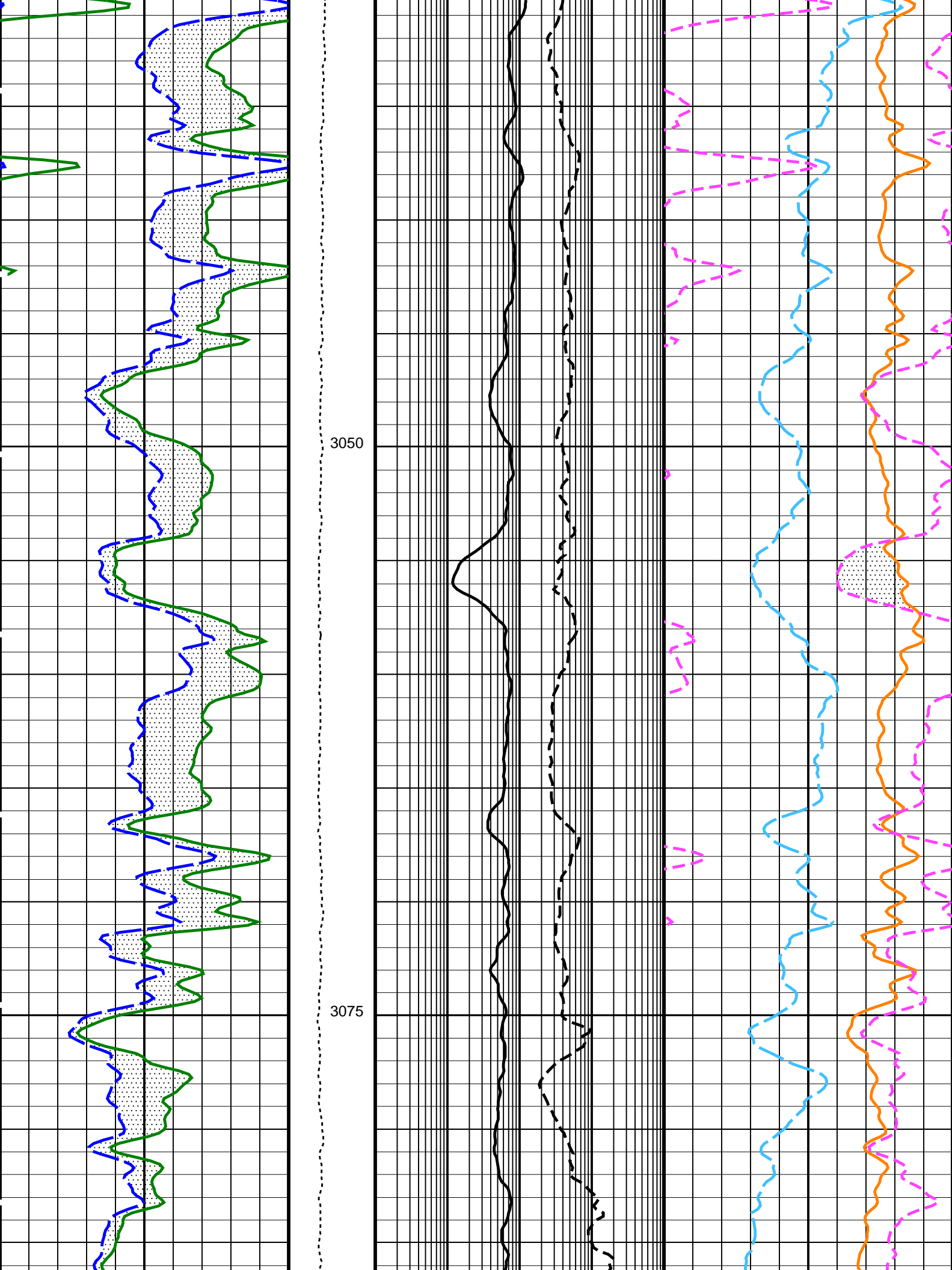
HTPR

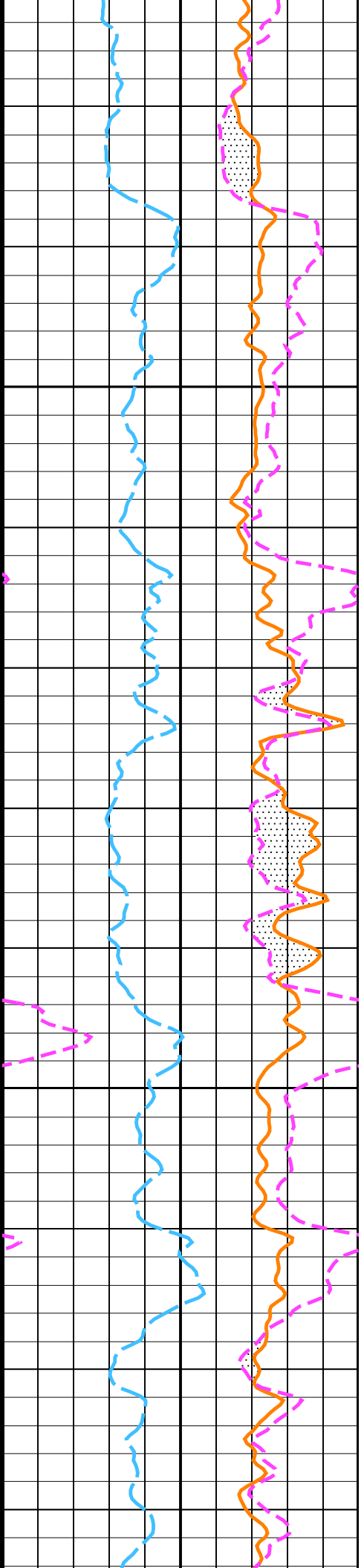
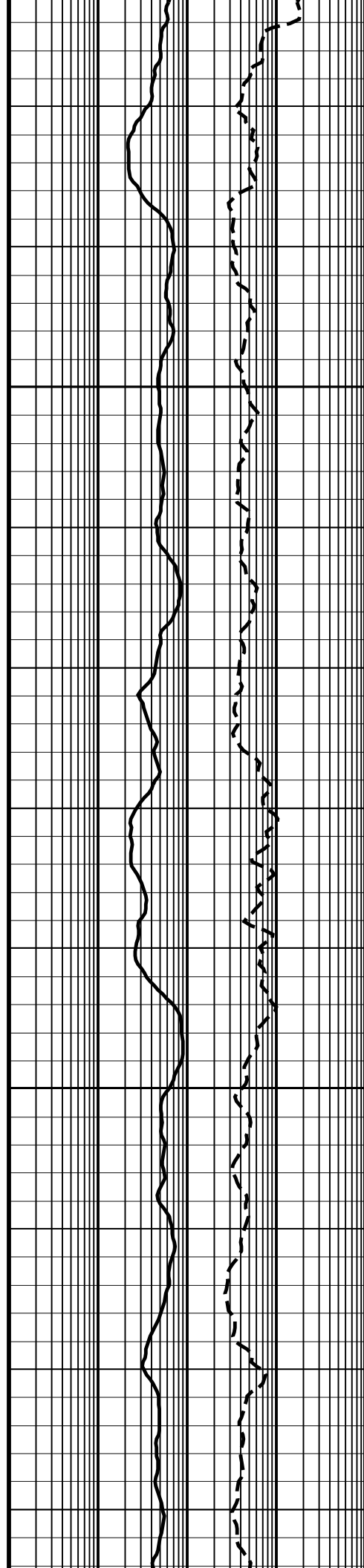
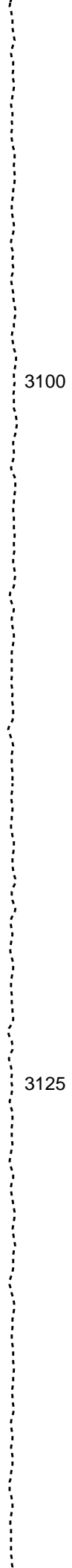
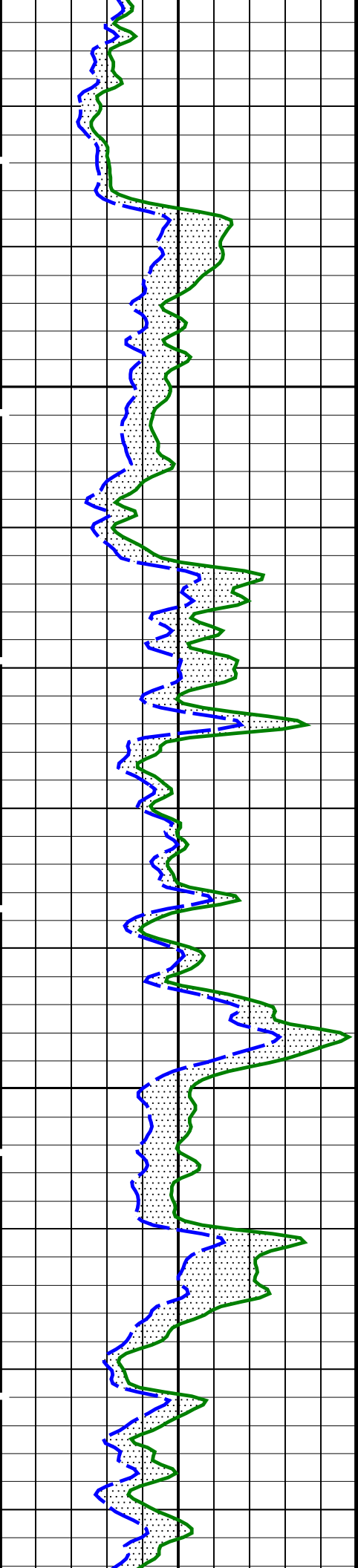


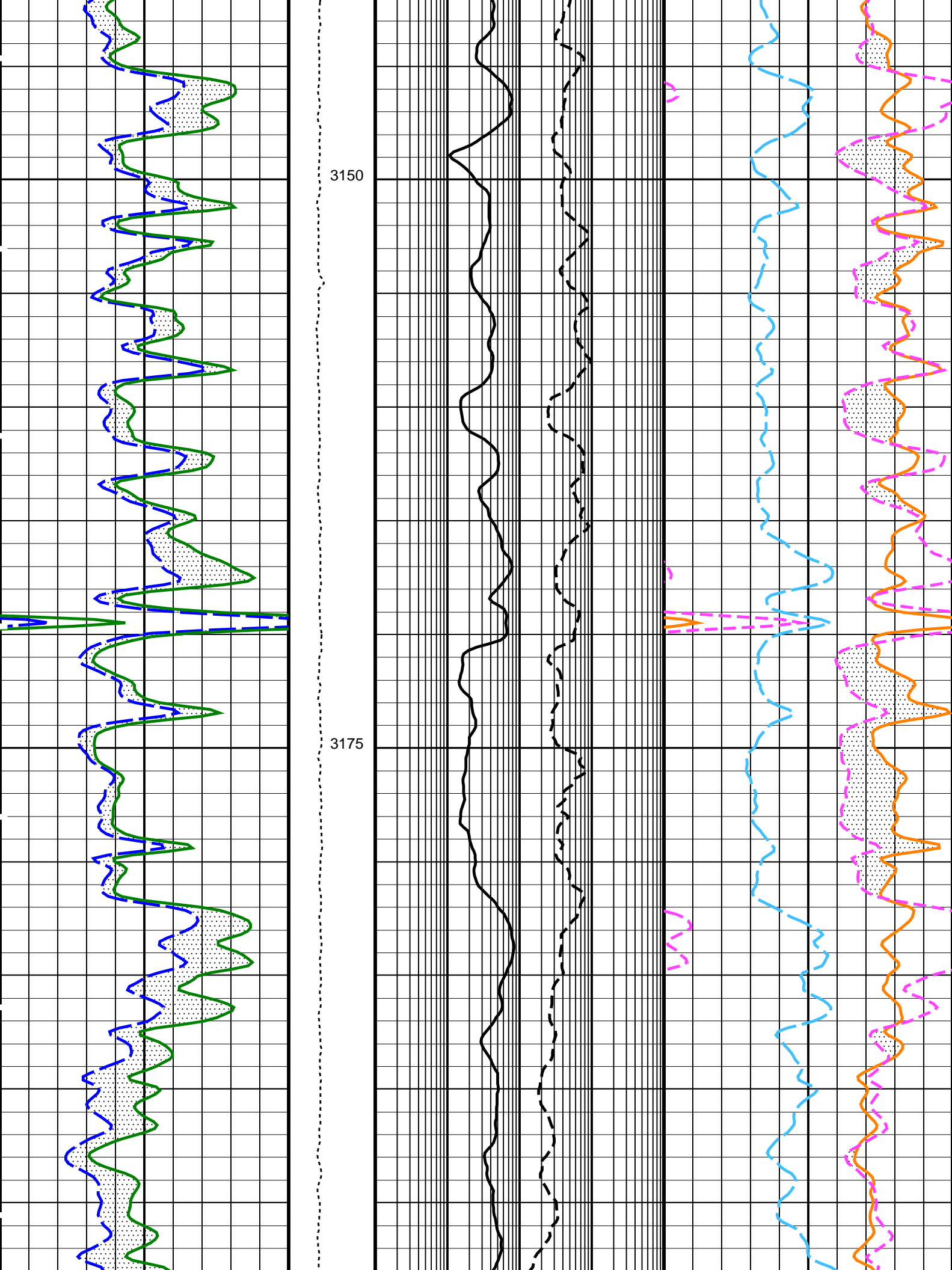
HURA

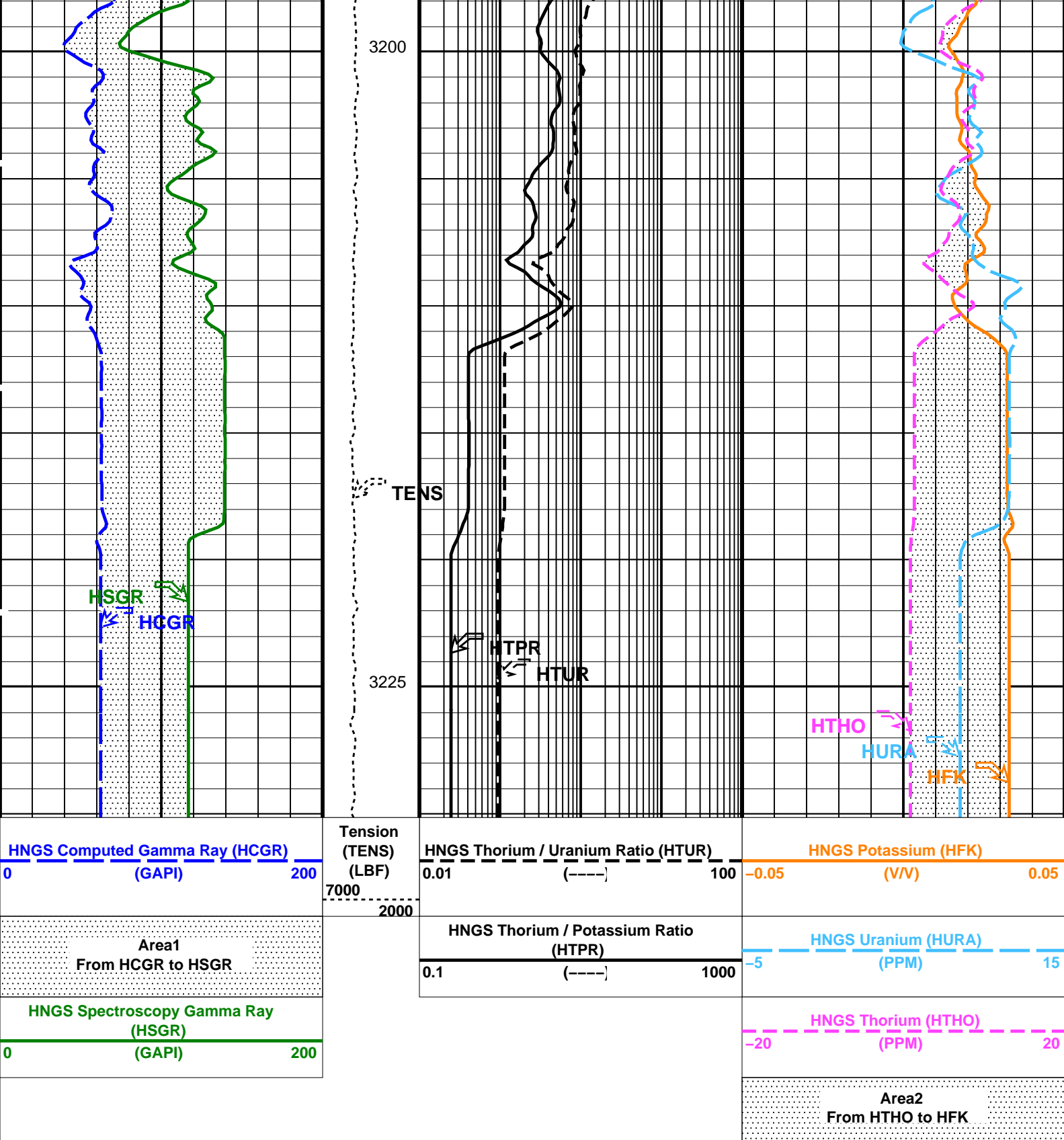
HFK

HTHO









Parameters		
DLIS Name	Description	Value
BHS	HRLT-B: High Resolution Laterolog Array – B	
GCSE	Borehole Status	OPEN
	Generalized Caliper Selection	HCAL
BHS	HILTH-FTB: High resolution Integrated Logging Tool-DTS	
GCSE	Borehole Status	OPEN
	Generalized Caliper Selection	HCAL
	HNGS-BA: Hostile Natural Gamma Ray Sonde	
BAR1	HNGS Detector 1 Barite Constant	0.994163

BAR2	HNGS Detector 2 Barite Constant	0.99047	
BHK	HNGS Borehole Potassium Correction Concentration	0.0341881	
BHS	Borehole Status	OPEN	
CSD1	Inner Casing Outer Diameter	0	IN
CSD2	Outer Casing Outer Diameter	0	IN
CSW1	Inner Casing Weight	0	LB/F
CSW2	Outer Casing Weight	0	LB/F
DBCC	HNGS Barite Constant Correction Flag	USER	
GCSE	Generalized Caliper Selection	HCAL	
H1P	HNGS Detector 1 Allow/Disallow In Processing	ALLOW	
H2P	HNGS Detector 2 Allow/Disallow In Processing	ALLOW	
HABK	HNGS Borehole Potassium Running Average	0.0341881	
HALF	HNGS Alpha Filter Length	60	IN
HCRB	HNGS Apply Borehole Potassium Correction	USER	
HMWM	Mud Weighting Material	NATU	
HNPE	HNGS Processing Enable	YES	
S1BI	HNGS Detector 1 Calibration Bismuth Count Rate	1.3	CPS
S2BI	HNGS Detector 2 Calibration Bismuth Count Rate	1.3	CPS
SGRC	HNGS Standard Gamma-Ray Correction Flag	YES	
TPOS	Tool Position	ECCE	
VBA1	HNGS Detector 1 Variable Barite Factor Running Average	0.994163	
VBA2	HNGS Detector 2 Variable Barite Factor Running Average	0.99047	
BHS	CMRT-B: Combinable Magnetic Resonance Tool – B		
	Borehole Status	OPEN	
GCSE	Generalized Caliper Selection	HCAL	
	EDTC-B: Enhanced DTS Cartridge		
BHS	Borehole Status	OPEN	
GCSE	Generalized Caliper Selection	HCAL	
System and Miscellaneous			
BS	Bit Size	8.500	IN
DFD	Drilling Fluid Density	1.14	G/C3
DO	Depth Offset for Playback	3.0	M
PP	Playback Processing	RECOMPUTE	

Format: HNGSRatios	Vertical Scale: 1:200	Graphics File Created: 19-Nov-2009 01:28
--------------------	-----------------------	--

OP System Version: 17C0-154

SPA-A	17C0-154	HRLT-B	17C0-154
HILTH-FTB	17C0-154	HNGC-B	17C0-154
HNGS-BA	SPC-3867-NUCL	CMRT-B	SPC-3874-CMR
EDTC-B	SKK-3882-EDTCB		

Input DLIS Files

DEFAULT	HRLA_TLD_MCFL_CNL_069LUP	FN:71	PRODUCER	18-Nov-2009 23:38	3227.8 M	2473.6 M
---------	--------------------------	-------	----------	-------------------	----------	----------

Output DLIS Files

DEFAULT	HRLA_TLD_MCFL_CNL_071PUP	FN:75	PRODUCER	19-Nov-2009 01:28		
RTBUP	HRLA_TLD_MCFL_CNL_071PUP	FN:76	PRODUCER	19-Nov-2009 01:28		