



# FORMATION EVALUATION LOG



WELL : TREFOIL-2

FROM (m): 2510

TO (m): 2650

SCALE: 1/ 500

Country : AUSTRALIA  
 Region : TASMANIA  
 Field : TREFOIL  
 Permit : T/18P  
 Well Type : APPRAISAL  
 Rig Name : KAN TAN 4

POSITION  
 Latitude : 39 53' 07.93" S  
 Longitude : 145 22' 14.62" E  
 X (m) : 360690.389  
 Y (m) : 5583676.588  
 RT-Sealevel (m MSL) : 26  
 RT-Seabed (m) : 95

CASING SHOE SIZE / DEPTH  
 762mm (30") at (m MDRT) : 153.00  
 340mm (13 3/8") at (m MDRT) : 930.00  
 245mm (9 5/8") at (m MDRT) : 2520.00

Spud Date : 06-10-2009  
 Total Depth Date :  
 Total Depth (m MDRT) :  
 Total Depth (m TVSS) :  
 Status :

## ABBREVIATIONS

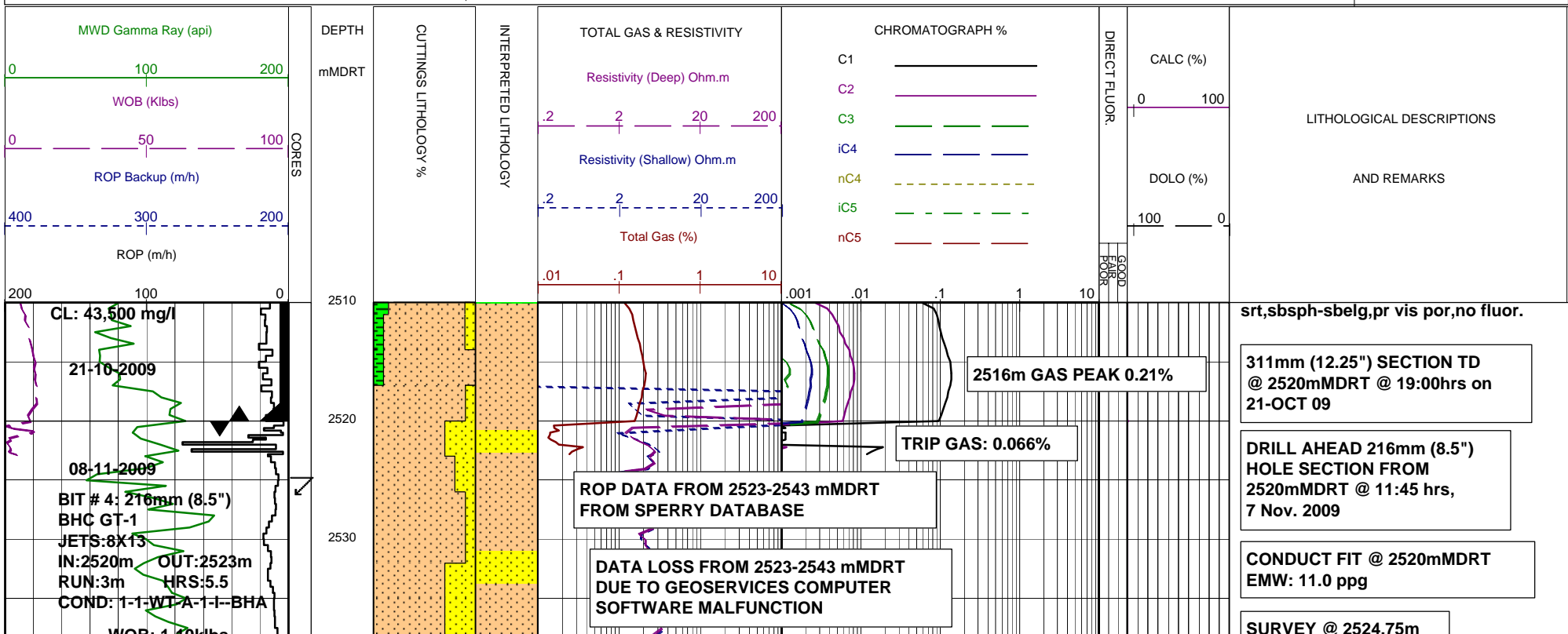
MW MUD WEIGHT	NB NEW BIT
FV FUNNEL VISCOSITY	RR RERUN BIT
PV PLASTIC VISCOSITY	CB CORE BIT
YP YIELD POINT	WOB WEIGHT ON BIT
FC FILTER CAKE	RPM REVS PER MINUTE
SOL SOLIDS	FLC FLOW CHECK
CR CIRCULATE RETURNS	WL FILTRATE
SD SAND - %	PR POOR RETURNS
S SALINITY - PPM	NR NO RETURNS
RM MUD RESISTIVITY	BG BACKGROUND GAS
RMF MUD FILTRATE	TG TRIP GAS
C CARBIDE TEST	STG SHORT TRIP GAS
LAT LOGGED AFTER TRIP	CG CONNECTION GAS
DS DEVIATION SURVEY	SG SWAB GAS
	SVG SURVEY GAS

## LITHOLOGY LEGEND

	Dolomite		Claystone		Argil Siltstone		Calcareous
	Calcurudite		Siltstone		Sandy Siltstone		Dolomitic
	Calcarenite		Sandstone		Calcareous Siltstone		Fossils
	Calcsiltite		Coal		Argil Sandstone		Foraminiferae
	Calclutite		Intrusive Volcanics		Calcareous Sandstone		Carbonaceous
	Sandy Claystone		Volcaniclastics		Dolomitic Sandstone		Chert
	Silty Claystone		Tuff		Silty Sandstone		Pyrite
	Calcareous Claystone		Cement				Glauconite
	Argil Calclutite						Mica

## ENGINEERING

	Test
	FIT or LOT
	Mud loss
	Mud gain
	Deviation survey
	Core
	Shoe
	Calcimetry



Incl 1.00° AZI:97.22°  
TVD:2524.47m

SANDSTONE:yelsh gry,v lt gry,  
olv gry,20% vf,50% f,30% med  
grs,tr crs grs,clr qtz grs,pr-  
mod srt,sbang-sbrnd,sbsph-sbelg,  
10% sil cmt,10% wh cly mtx,tr  
lithic frags,tr carb mat,pr inf  
vis por,no fluor.

SURVEY @ 2557.55m  
Incl 1.13° AZI:91.00°  
TVD:2557.30m

DOLOMITE:brnsh gry,frm-mod hd,  
sbbiky w/- conch frac i/p.

SILTSTONE:pred brnsh blk,tr  
olv gry & brnsh gry,sft-frm,blky-  
sbbiky,tr carb spks & lam,tr  
micmic & lam mica flks.

SANDSTONE:v lt gry,olv gry,  
tr yelsh gry,tr lt olv gry,20%  
vf,50% f,30% med grs,clr qtz  
grs,lse-frm,pr-mod srt,sbrnd-  
ang,sbsph-sbelg,10% wh cly mat,  
tr lithic frags,tr carb mat,tr  
pyr,pr inf vis por,no fluor.

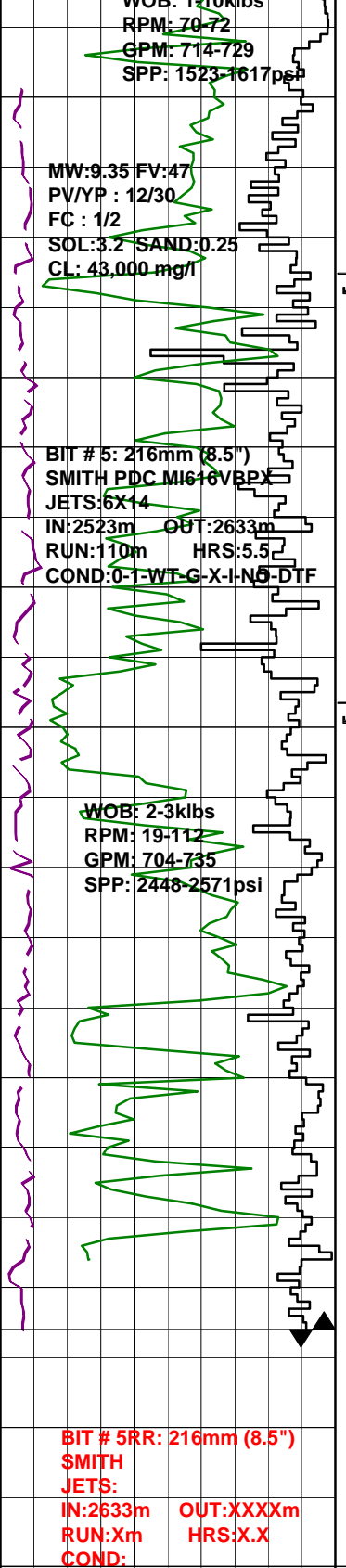
SURVEY @ 2588.22m  
Incl 1.30° AZI:90.35°  
TVD:2587.90m

SANDSTONE:v lt gry-lt gry-  
clr-opq,olv gry,5% vf,30% f,  
40% med,20% crs,5% v crs grs,  
lse-frm,pr-mod srt,sbrnd-ang,  
sbsph-sbelg,tr sil cmt,tr pyr  
cmt,tr calcite cmt,incr in lse,  
clr v crs qtz grs,tr lithic  
frags,tr carb mat,tr glauc,tr nod  
pyr,gd inf por,no fluor.

SILTSTONE:brnsh gry,brnsh blk,  
olv blk,olv gry,sft-frm,blky-  
sbfiss,tr carb mat,tr lithic frags,  
tr coal,micr.

CARBIDE LAG CHECK @ 2630m  
THEOR STKS:4148  
ACTUAL STKS:4299  
INGAUGE HOLE.

SANDSTONE:v lt gry-lt gry-clr-  
opq,tr yelsh gry,5% vf,35% f,30%  
med,30% crs grs,lse-frm,por-mod  
srt,sbrnd-sbang,sbsph-sph,tr sil  
cmt,tr calcite cmt,tr lithic frags,  
tr carb mat,tr nod pyr,tr glauc,  
pr inf vis por,no fluor.



LOW MUD LEVEL IN  
SHAKER BOX ACCOUNTS  
FOR ANOMALOUS LOW  
GAS DATA BETWEEN  
2601-2613 mMDRT