



FORMATION EVALUATION LOG

WELL : TREFOIL-2



FROM (m): 2500

TO (m): 3280

SCALE: 1/ 500

Country : AUSTRALIA
Region : TASMANIA
Field : TREFOIL
Permit : T/18P
Well Type : APPRAISAL
Rig Name : KAN TAN 4

POSITION
Latitude : 39 53' 07.93" S
Longitude : 145 22' 14.62" E
X (m) : 360690.389
Y (m) : 5583676.588
RT-Sealevel (m MSL) : 26
RT-Seabed (m) : 95

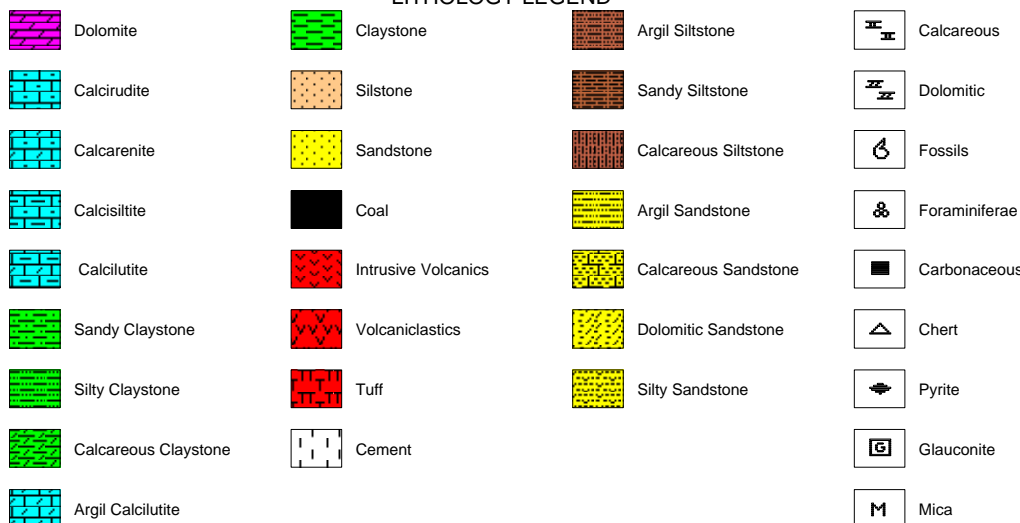
CASING SHOE SIZE / DEPTH
762mm (30") at (m MDRT) : 153.00
340mm (13 3/8") at (m MDRT) : 930.00
245mm (9 5/8") at (m MDRT) : 2520.00

Spud Date : 06-10-2009
Total Depth Date : 18-11-2009
Total Depth (m MDRT) : 3235.0
Total Depth (m TVSS) : 3234.0
Status :

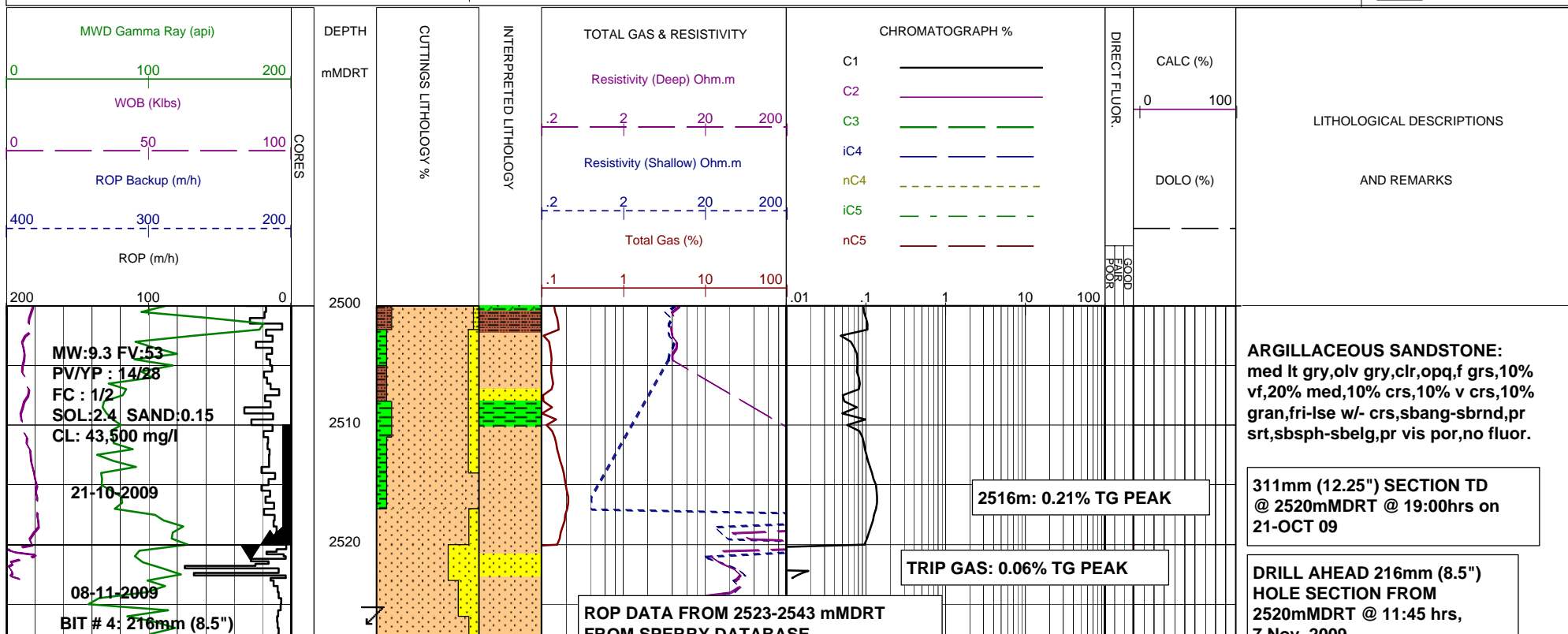
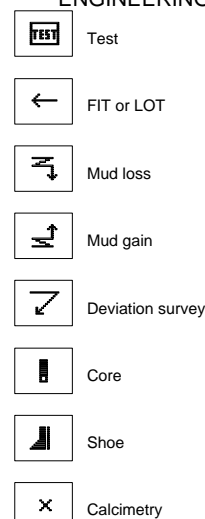
ABBREVIATIONS

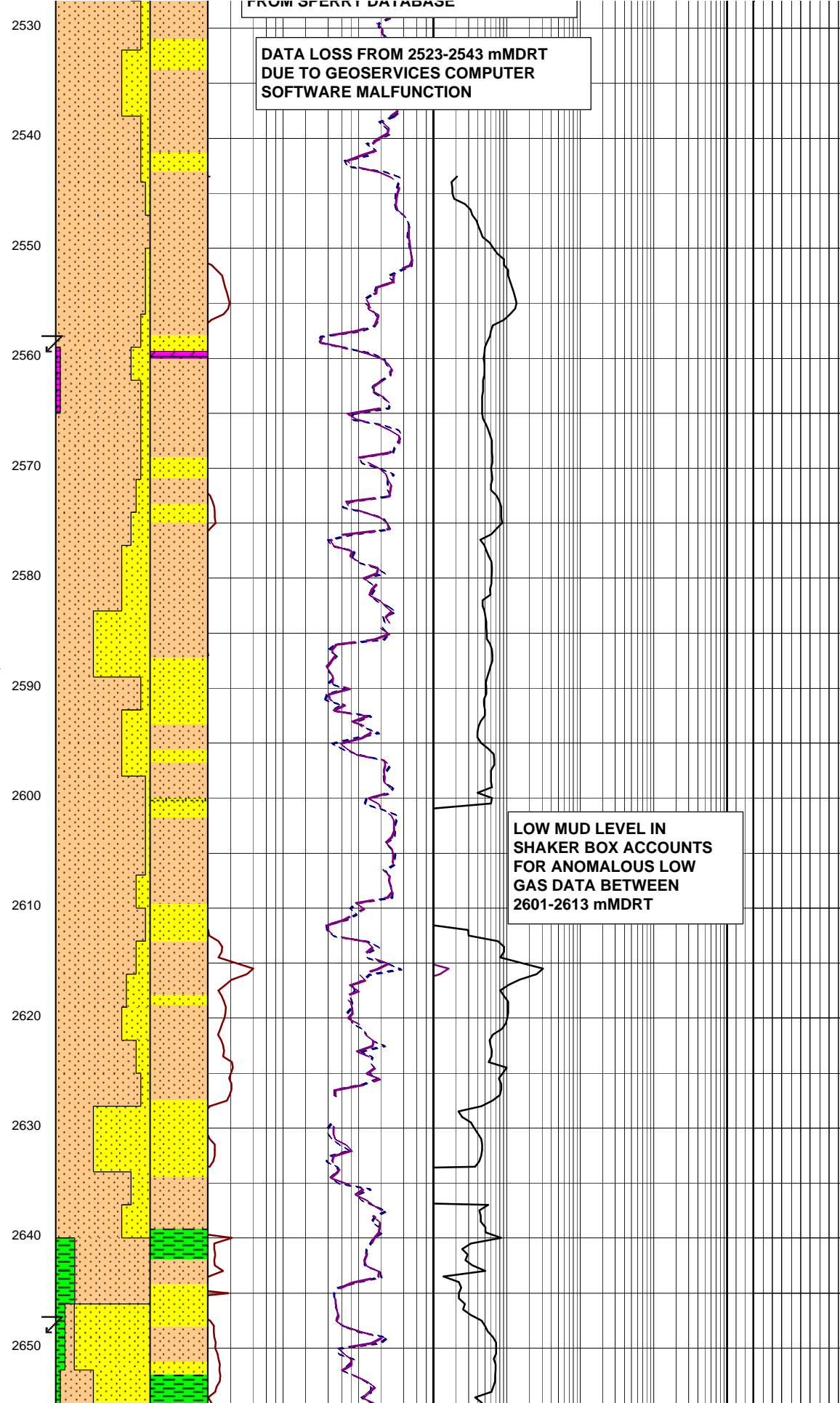
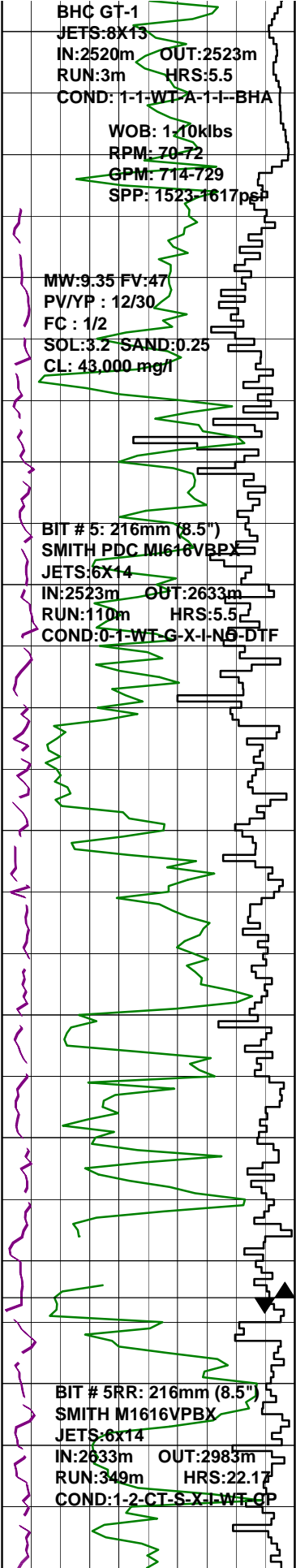
MW MUD WEIGHT NB NEW BIT
FV FUNNEL VISCOSITY RR RERUN BIT
PV PLASTIC VISCOSITY CB CORE BIT
YP YIELD POINT WOB WEIGHT ON BIT
FC FILTER CAKE RPM REVS PER MINUTE
SOL SOLIDS FLC FLOW CHECK
CR CIRCULATE RETURNS WL FILTRATE
SD SAND - % PR POOR RETURNS
S SALINITY - PPM NR NO RETURNS
RM MUD RESISTIVITY BG BACKGROUND GAS
RMF MUD FILTRATE TG TRIP GAS
C CARBIDE TEST STG SHORT TRIP GAS
LAT LOGGED AFTER TRIP CG CONNECTION GAS
DS DEVIATION SURVEY SG SWAB GAS
SVG SURVEY GAS

LITHOLOGY LEGEND



ENGINEERING





7 NOV. 2009

CONDUCT FIT @ 2523mMDRT
EMW: 11.0 ppg

SURVEY @ 2524.75m
Incl 1.00° AZI:97.22°
TVD:2524.47m

SANDSTONE:yelsh gry,v lt gry,
olv gry,20% vf,50% f,30% med
grs,tr crs grs,clr qtz grs,pr-
mod srt,sbang-sbrnd,sbsph-sbelg,
10% sil cmt,10% wh cly mtx,tr
lithic frags,tr carb mat,pr inf
vis por,no fluor.

SURVEY @ 2557.55m
Incl 1.13° AZI:91.00°
TVD:2557.30m

DOLOMITE:brnsh gry,frm-mod hd,
sbbiky w/- conch frac i/p.

SILTSTONE:pred brnsh blk,tr
olv gry & brnsh gry,sft-frm,blky-
sbbiky,tr carb spks & lam,tr
micmic & lam mica flks.

SANDSTONE:v lt gry,olv gry,
tr yelsh gry,tr lt olv gry,20%
vf,50% f,30% med grs,clr qtz
grs,lse-frm,pr-mod srt,sbrnd-
ang,sbsph-sbelg,10% wh cly mat,
tr lithic frags,tr carb mat,tr
pyr,pr inf vis por,no fluor.

SURVEY @ 2588.22m
Incl 1.30° AZI:90.35°
TVD:2587.90m

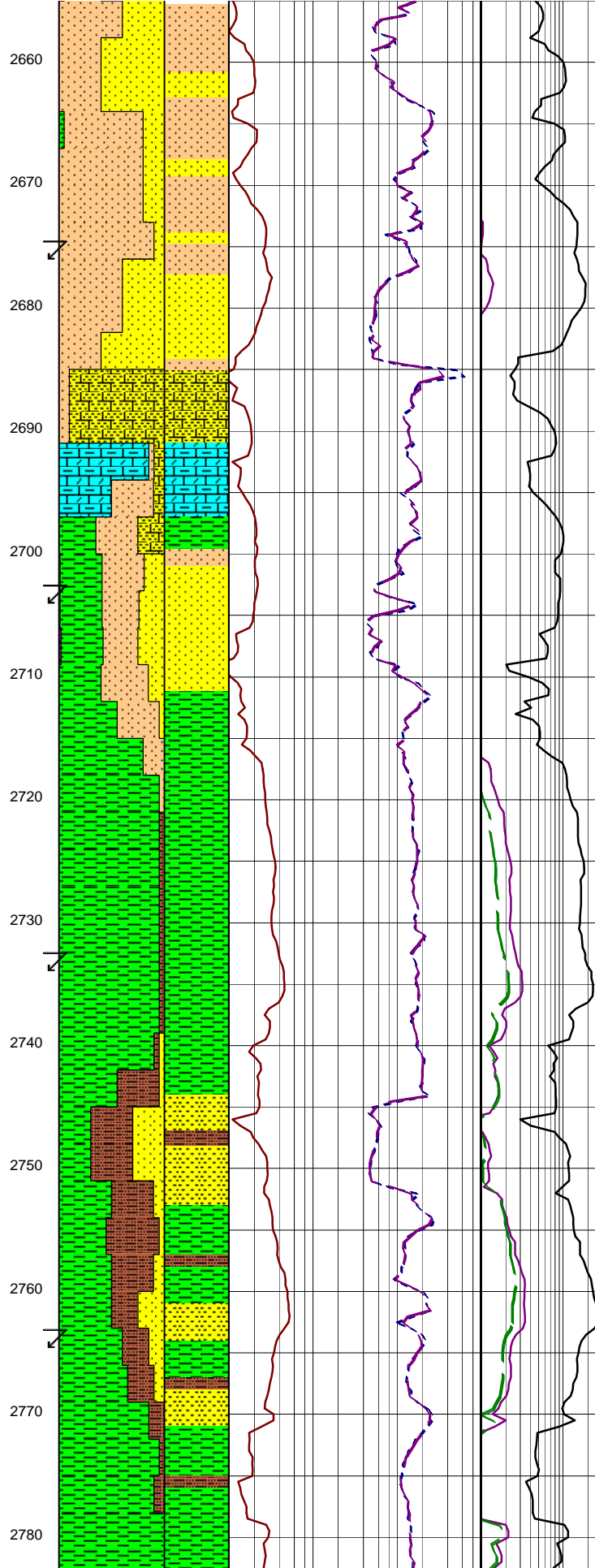
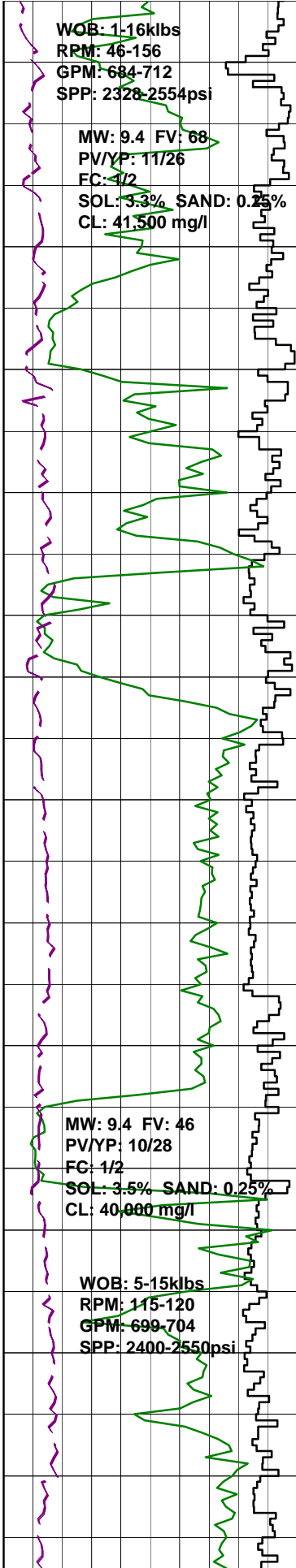
SANDSTONE:v lt gry-lt gry-
clr-opq,olv gry,5% vf,30% f,
40% med,20% crs,5% v crs grs,
lse-frm,pr-mod srt,sbrnd-ang,
sbsph-sbelg,tr sil cmt,tr pyr
cmt,tr calcite cmt,incr in lse,
clr v crs qtz grs,tr lithic
frags,tr carb mat,tr glauc,tr nod
pyr,gd inf por,no fluor.

SILTSTONE:brnsh gry,brnsh blk,
olv blk,olv gry,sft-frm,blky-
sbfiss,tr carb mat,tr lithic frags,
tr coal,micr.

CARBIDE LAG CHECK @ 2630m
THEOR STKS:4148
ACTUAL STKS:4299
INGAUGE HOLE.

SANDSTONE:v lt gry-lt gry-clr-
opq,tr yelsh gry,5% vf,35% f,30%
med,30% crs grs,lse-frm,por-mod
srt,sbrnd-sbang,sbsph-sph,tr sil
cmt,tr calcite cmt,tr lithic frags,
tr carb mat,tr nod pyr,tr glauc,
pr inf vis por,no fluor.

POOH @ 2633 mMDRT DUE TO
LWD 'PULSER' FAILURE. P/U
COMPLETE LWD TOOL STRING



SURVEY @ 2646.63m
Incl 1.43° AZI:86.39°
TVD:2646.32m

CLAYSTONE:olv blk,frm,sbblky,tr
micmic,tr carb spks.

SURVEY @ 2674.00m
Incl 1.43° AZI:86.39°
TVD:2673.70m

SANDSTONE:v lt gry,clr & opq,
pred lse-fri,qtz,f grs,10% vf
grs,40% med,sbang-sbrnd,sbsph-
sbelg,pr sil cmt when aggs,tr
pyr cmt,5% cl mtx,tr brn mica
flks,fr vis por infr,no fluor.

CALCILUTITE:lt gry-med lt gry,
tr yelsh gry,v sft-frm,sbblky-blky,
grd to CLYST i/p,tr carb mat.

SURVEY @ 2702.98m
Incl 1.62° AZI:88.34°
TVD:2702.65m

ARGILLACEOUS SILTSTONE:
brnsh blk,olv blk,olv gry,sft-
frm,sbblky-blky,tr carb mat,tr
lithic frags.

CLAYSTONE:med gry-med dk gry,
sft-frm,sbblky-blky,tr carb mat,
tr micmic.

SURVEY @ 2732.91m
Incl 1.69° AZI:88.47°
TVD:2732.57m

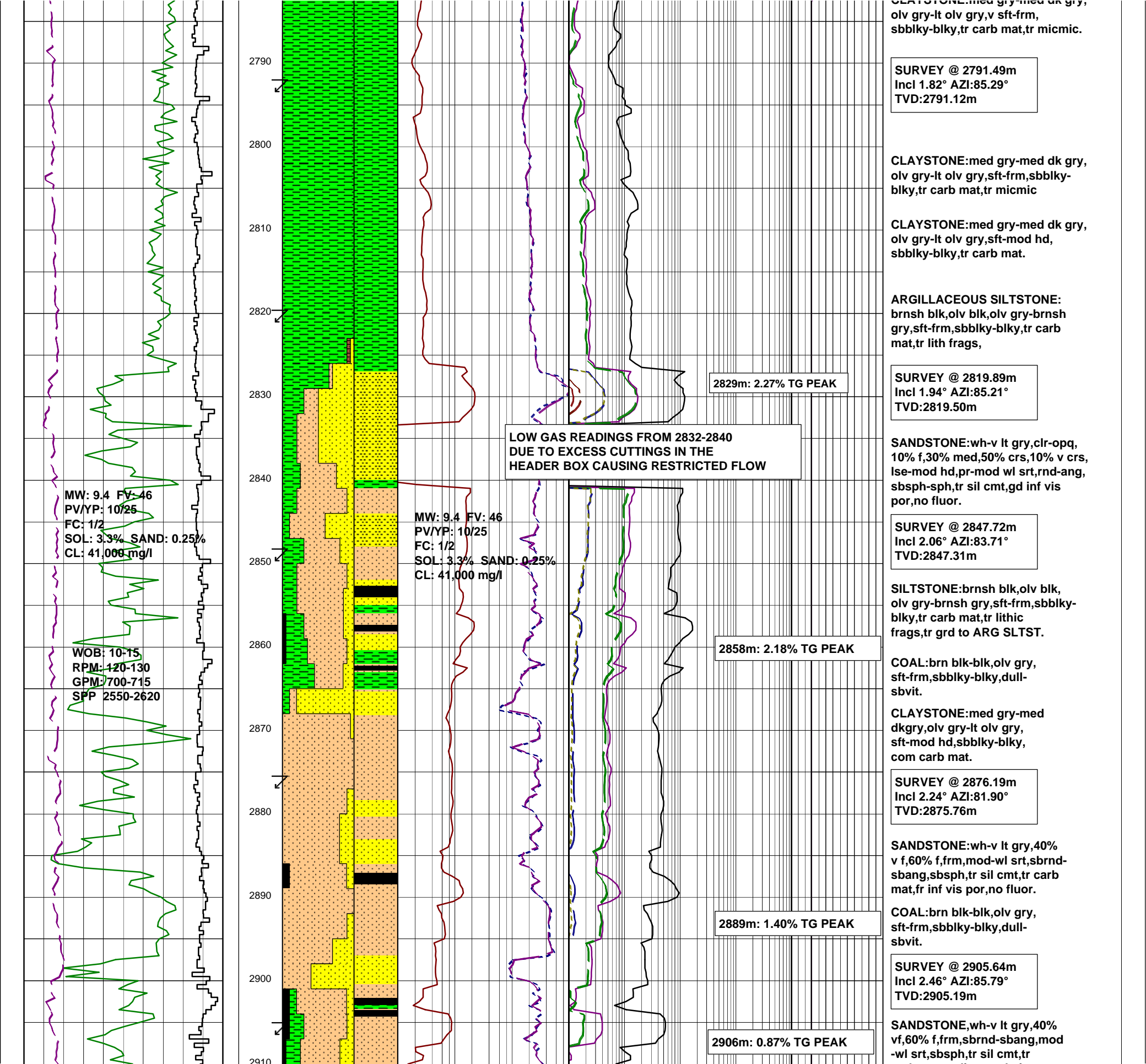
SANDSTONE:wh-v lt gry,clr-opq,
tr yelsh gry,10% vf,70% f,20% med,
lse-mod hd,mod wl-wl srt,sbrnd
-rnd,sbsph-sph,tr sil cmt,gd inf
vis por,no fluor.

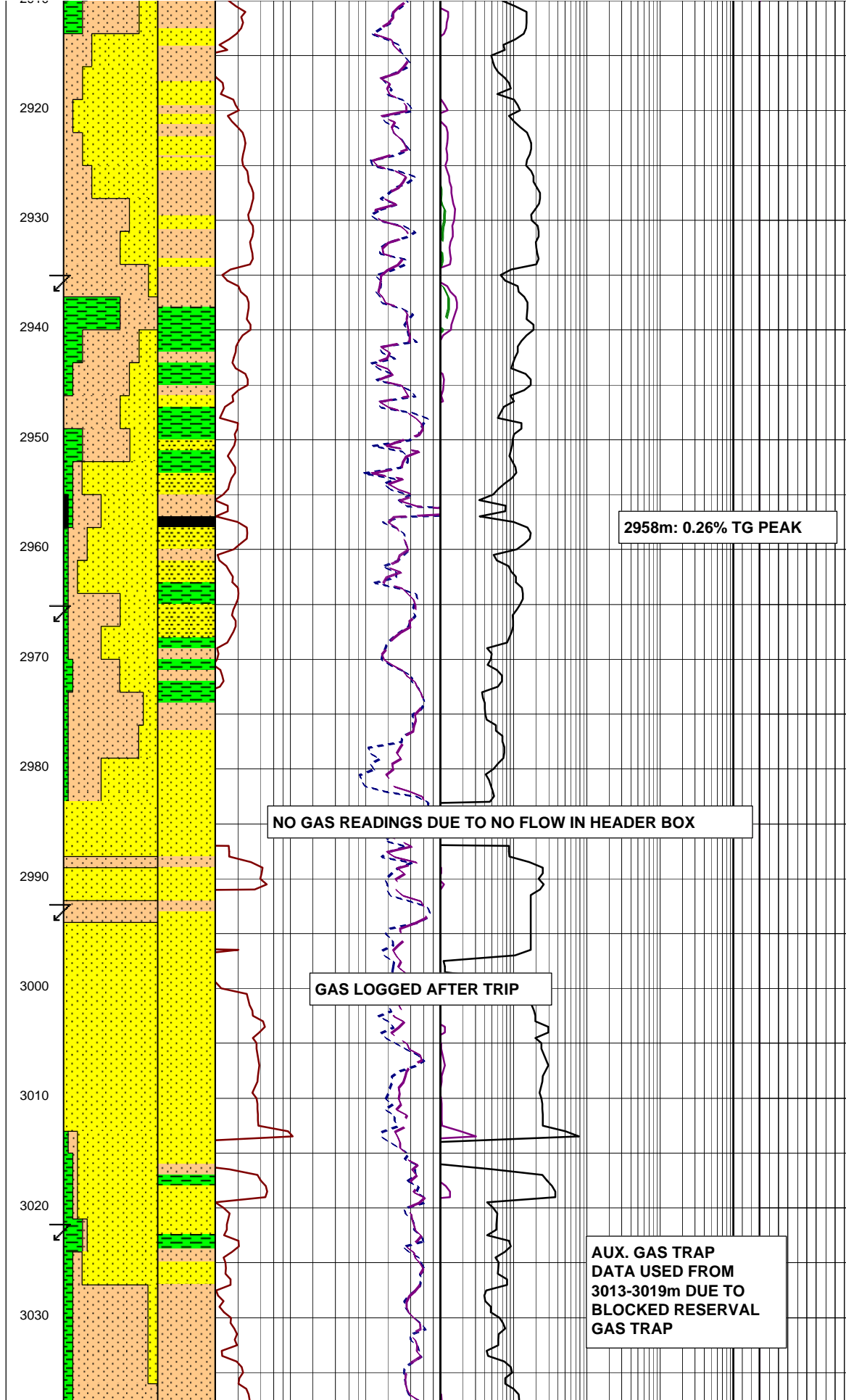
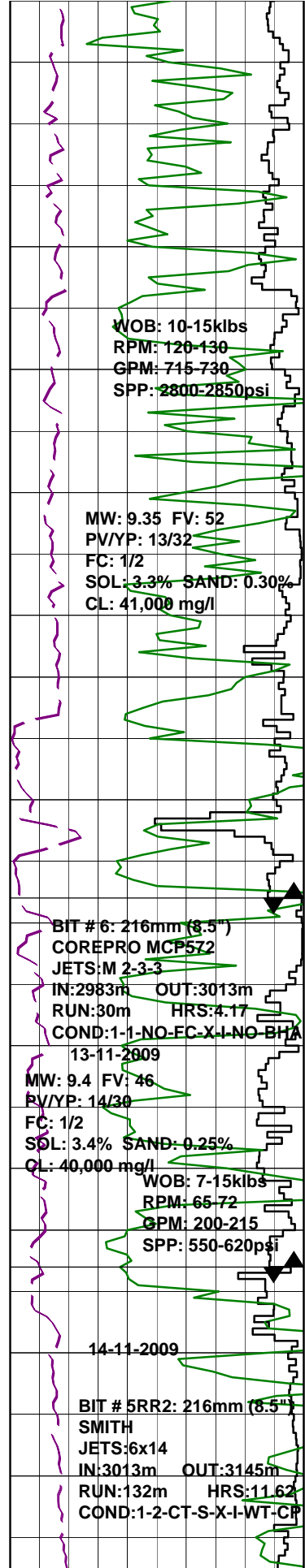
CLAYSTONE:med gry-med dk gry,
olv gry-lt olv gry,sft-frm,sbblky-
blky,tr carb mat,tr micmic.

SURVEY @ 2762.56m
Incl 1.85° AZI:89.89°
TVD:2762.20m

ARGILLACEOUS SILTSTONE:
brnsh blk,olv blk,olv gry-brnsh
gry,sft-frm,sbblky-blky,tr carb
mat,tr lithic frags,tr pyr.

CLAYSTONE:med gry-med dk gry,





carb mat, tr disp coal pieces, fr infr vis por, no fluor.

CLAYSTONE: olv gry, olv blk, sft frm, sbblky-blky, increase in carb mat.

SILTSTONE: olv gry, brn blk, sft frm, sbblky-blky, tr carb mat as thn lam spks, tr lithic frags, tr micmic, tr blk, bright coal pieces.

SANDSTONE: olv gry, mott, fri, lithofelds, vf grs, 30% f grs, mod srt, sbsph, 10% cly mtx, 2% carb mat, 1% alt felds, tr lithic frags, fr vis por, no fluor.

CLAYSTONE: olv blk, sft frm, blkly-sbblky, tr dk mica flks.

SURVEY @ 2935.67m
Incl 2.58° AZI: 82.74°
TVD: 2935.19m

COAL: blk, grysh blk, sft, sp.

CLAYSTONE: brnsh gry-brnsh blk, olv blk, sft frm, sbblky, tr carb strks.

SURVEY @ 2963.22m
Incl 2.93° AZI: 85.15°
TVD: 2962.71m

SANDSTONE: wh-v lt gry, olv gry, mott, lt gry, clr, opq, tr yelsh, gry, 5% vf, 5% f, 20 med, 40% crs, 30% v crs, tr gran grs, lse-mod hd, pr-mod srt, sbrnd-sbang, sbsph-sph, tr carb mat, tr micmic flks, gd inf vis por, no fluor.

CORE RUN # 1
2983 - 3013 mMDRT
CUT 30m, REC 31.2m
104%

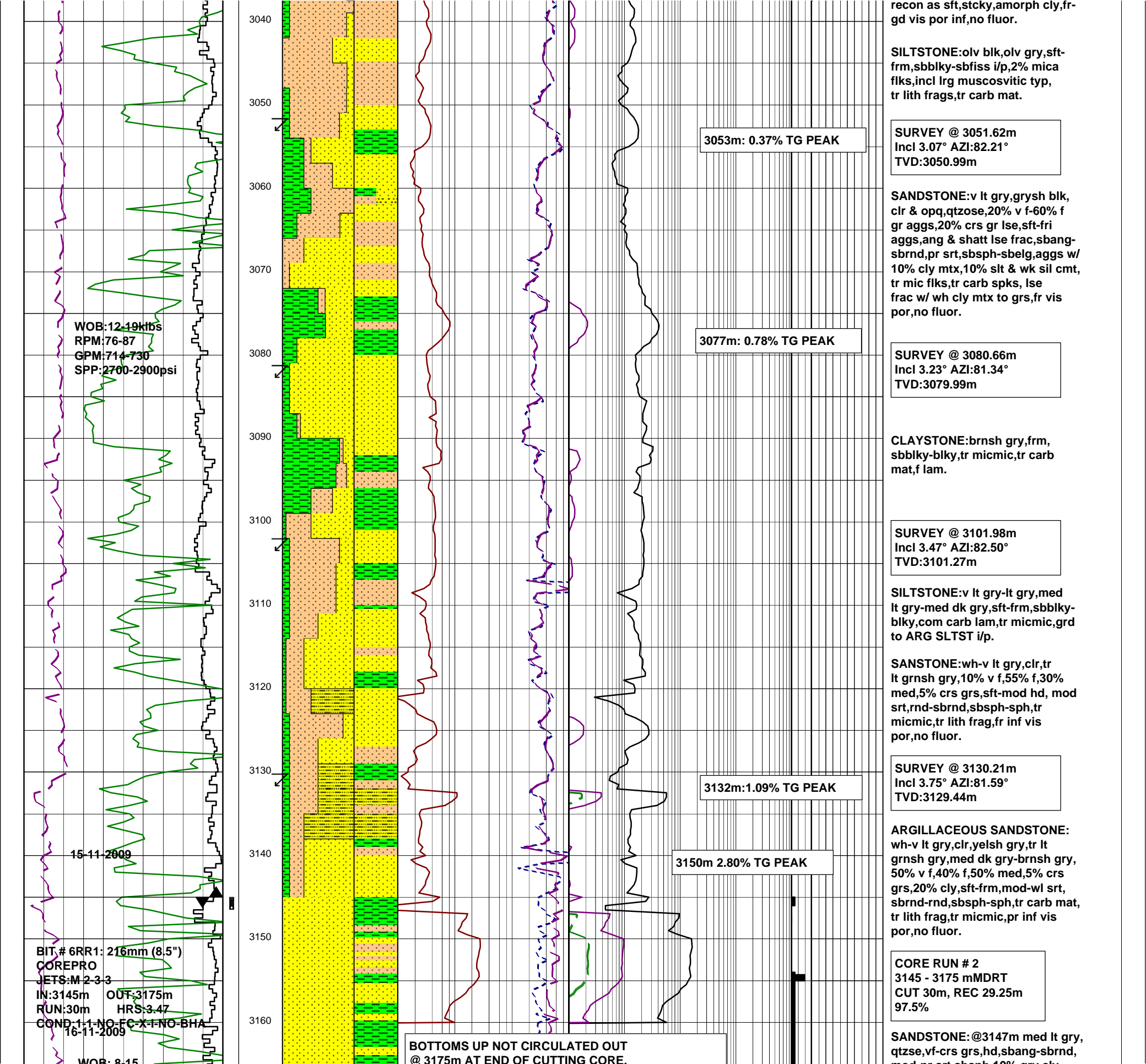
SANDSTONE: wh-v lt gry, yelsh gry, clr, vf-v crs grs, frm-hd, pr srt, sbrnd-ang, sbsph-sph, 7-10% sil cmt, 1% mic flks, fr inf vis por, tr-1% amber, no fluor.

SILTSTONE: med gry-med dk gry, dk gry, mod hd-hd, blkly-sbfiss, 15-25% mic flks.

SURVEY @ 2992.32m
Incl 2.88° AZI: 83.61°
TVD: 2991.77m

SURVEY @ 3021.53m
Incl 3.01° AZI: 83.20°
TVD: 3020.94m

SANDSTONE: lse qrtz grns, clr, opq, v lt gry, crs grs, 10% v crs, 10% med grs, ang(shtd)-sbang to sbrnd, mod srt, sbelg-sbsph, tr wh cly mtx, adhr to grn surfaces & i/p



RPM: 66-67
GPM: 203-205
SPP: 670-700

BIT # 5RR4: 216mm (8.5")
SMITH
JETS: 6x14
IN: 3175m OUT: 3235m
RUN: 60m HRS: 6.11
COND: 1-2 CT-S-X-I-NO-TO

17-11-2009

18-11-2009

GAS NOT CIRCULATED OUT WHILE RIH
DUE TO MECH PROBLEMS WITH DRAWWORKS

TRIP: 0.96% TG PEAK

3200m: 0.58% TG PEAK

mod-pr srt,sospn,10% gry clay
mtx,wl sil cmt,10% muscovitic &
biotitic mic flks,tr carb mat,
pr vis por,no fluor.

SANDSTONE: @3155m v lt gry,tr
yelsh gry grs,qtzse,hd-mod hd,
f-v crs grs,rnd v crs grs-sbang-
sbrnd,pr srt,sph-sbsph-sbelb,tr
amber,tr carb mat,tr biotitic
mic flks,fr vis por,ov yel grn
fluor,slw bloo-strmg blu wh cut,
blu yel bri flm res.

SURVEY @ 3167.65m
Incl 3.79° AZI:84.07°
TVD:3166.80m

CLAYSTONE: lt brnsh gry-brnsh
gry,mod yelsh gry-grysh brn,sft-
frm,sbblky-blky,tr carb mat.

SURVEY @ 3194.79m
Incl 3.87° AZI:83.32°
TVD:3193.88m

SILTSTONE: med lt gry-med gry,
dk gry-olv blk,sft-frm,sbblky-
sbfiss,tr micmic,tr carb mat.

SANDSTONE: wh-v lt gry,lt gry,
clr,tr yelsh gry,tr pnksh gry,
20% f,40% med,30% crs,10% v crs,
sft-mod hd,mod srt,sbrnd-ang,
sbsph-sph,tr carb mat,gd inf
vis por.no fluor.

SURVEY @ 3235.00m
Incl 4.33° AZI:83.41°
TVD:3233.99m

SURVEY @ 3223.60m
Incl 4.33° AZI:83.41°
TVD:3222.62m

TD TREFOIL-2 @ 03:00
216mm (8.5") SECTION
ON THE 18TH NOV 2009

WIRELINE LOGS
RUN #1: SP-CMR+-HRLA
-PEX-HNGS
RUN #2: MDT-GR
RUN #3: FMI-DSI-GR