



GEOFRAME
PROCESSED
INTERPRETATION

Spikey Beach-1

Sonivision Processing

Run 1 : 200m – 795m (1/200)

* A Mark of Schlumberger

Using the following logs:

sonicVision

COMPANY: Beach Petroleum

WELL: Spikey Beach-1

FIELD: T38

State Tasmania

COUNTRY: Australia

Date Logged: 09-Sep-2009

Date Processed:

09-Sep-2009

FOLD HERE

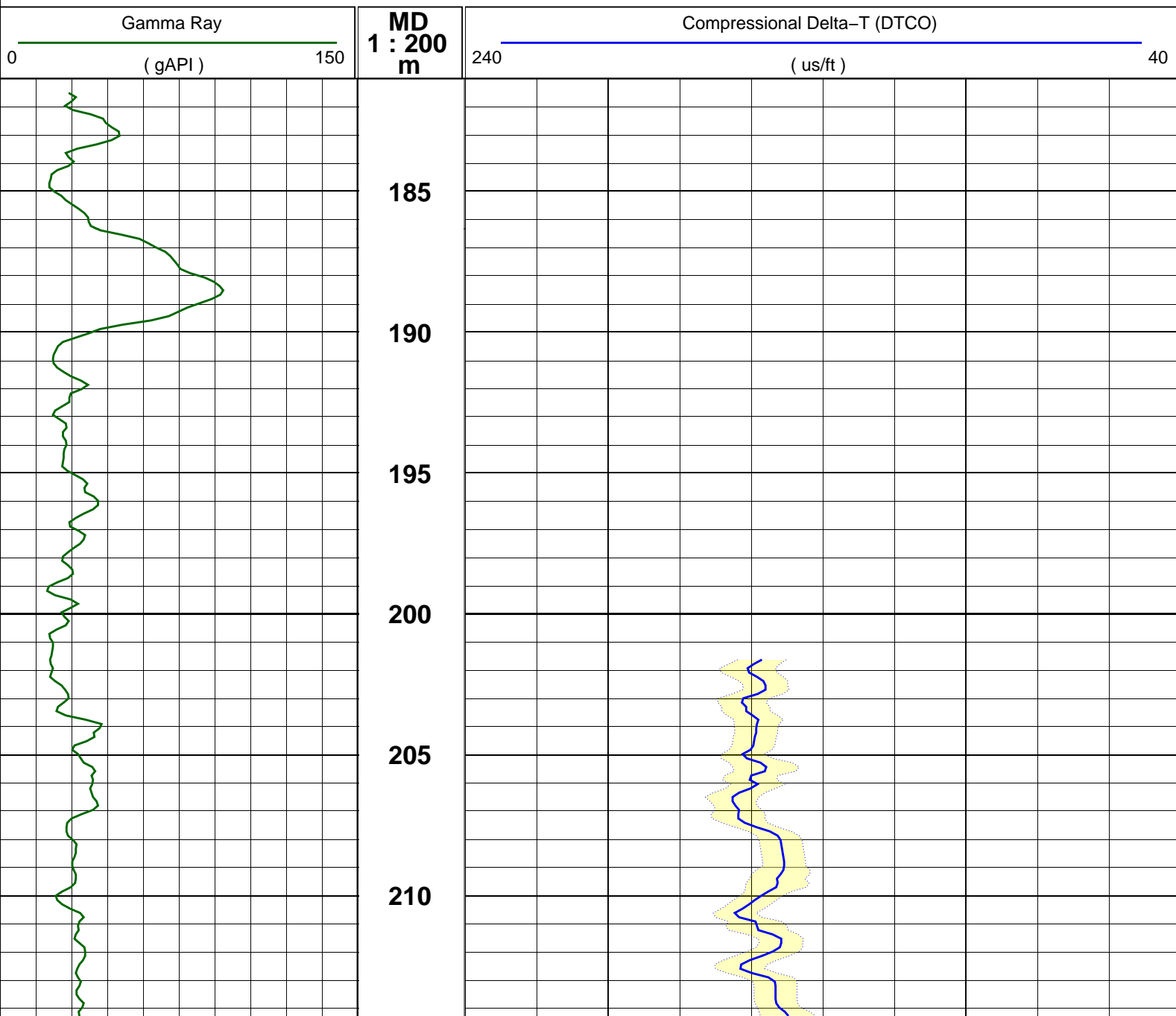
The well name, location and borehole reference data were furnished by the customer.

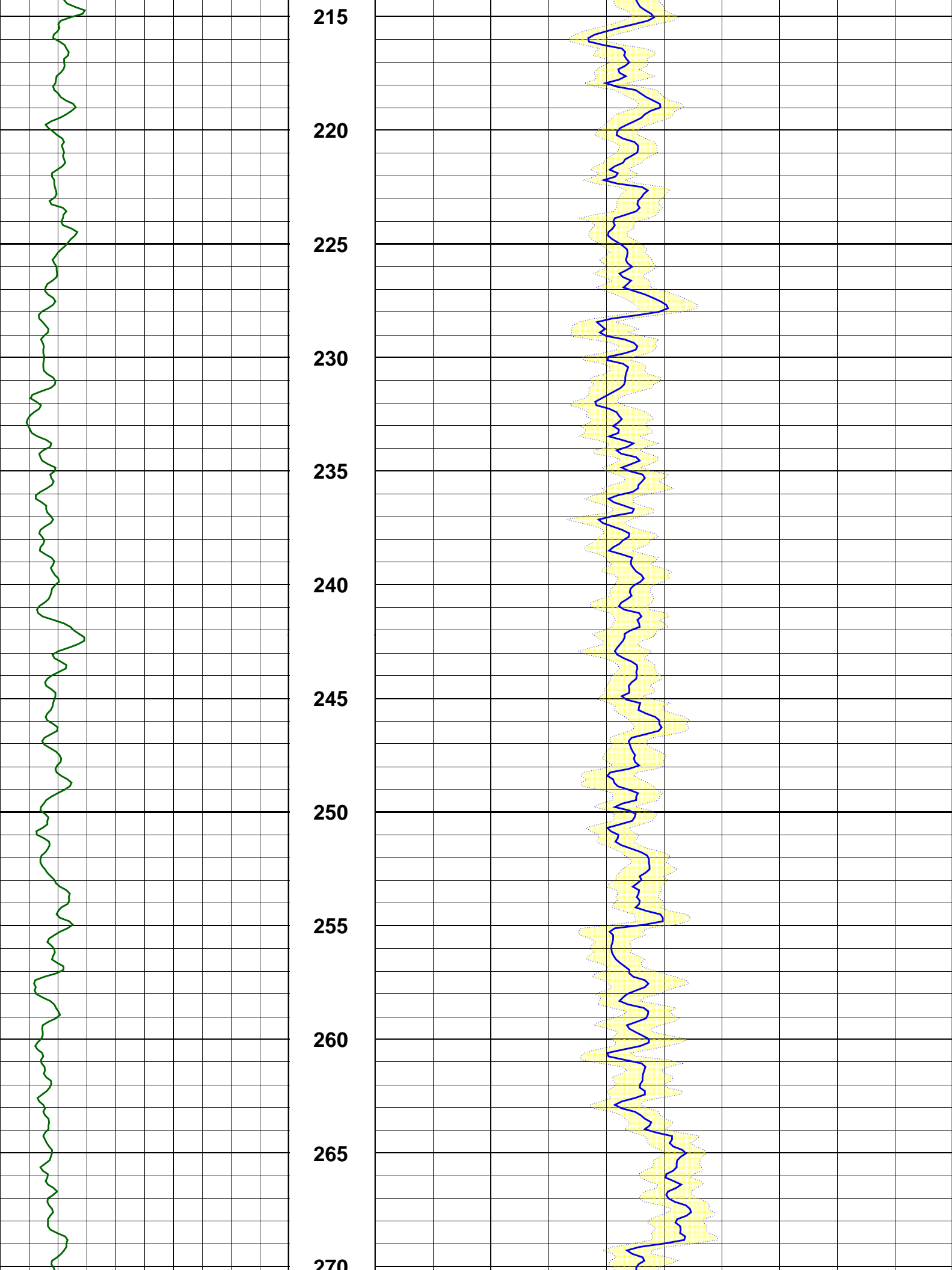
All interpretations are opinions based on inferences from electrical or other measurements and we cannot, and do not guarantee the accuracy or correctness of any interpretation, and we shall not, except in the case of gross or willful negligence on our part, be liable or responsible for any loss, costs, damages or expenses incurred or sustained by anyone resulting from any interpretations made by any of our officers, agents or employees. These interpretations are also subject to Clause 4 of our General Terms and Conditions as set out in our current Price Schedule.

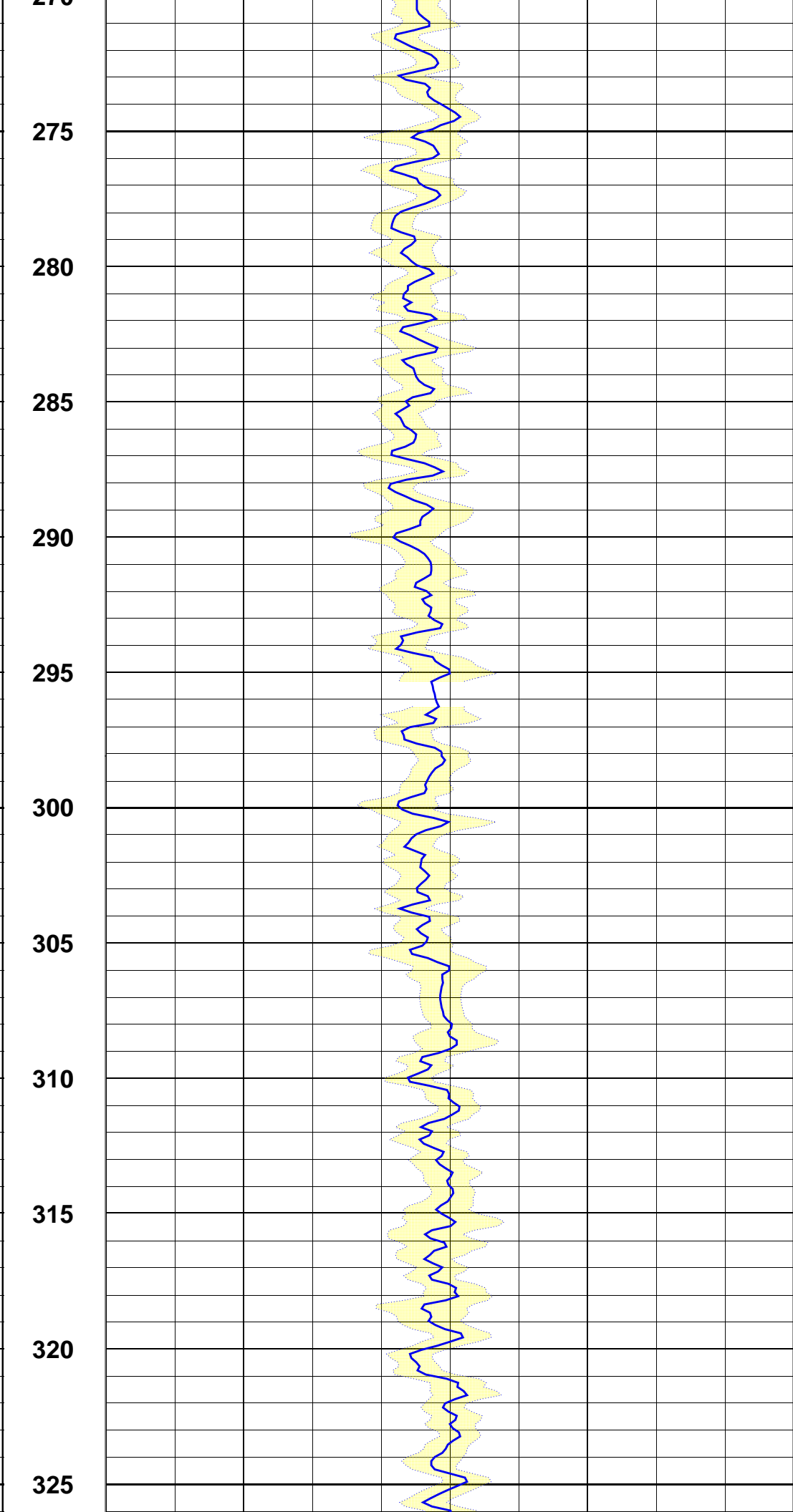
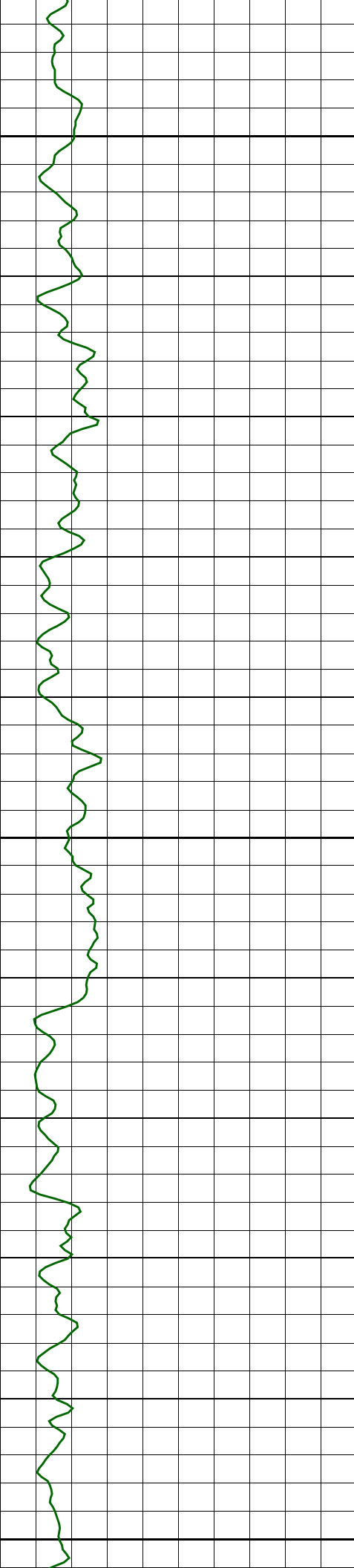
Field Recording:	Location:	Software Version: 20C0-999	Engineer: Marganda
Office Recording:	ICS Center: Melbourne	Baseline: GF 44 DC4	Log Analyst: A. Datey
Mud and Borehole Measurements:			
Rm @ Measured Temperature: 0.2ohm.m @ 15degC		Bitsize: 17.5in	
Rmf @ Measured Temperature: @		Type Fluid in Hole:	Sea Water
Rmc @ Measured Temperature: @		Mud Density: 1.05447g/cm3	

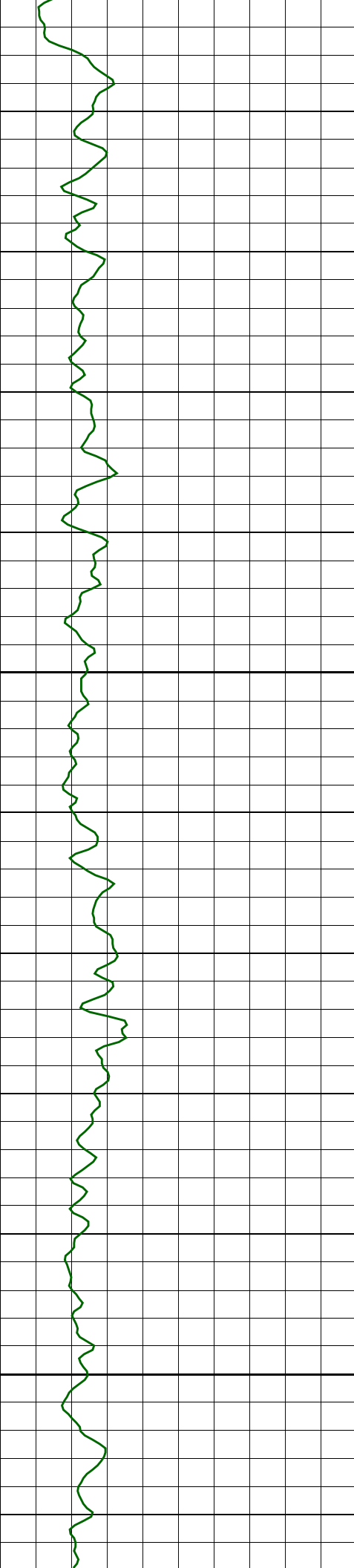
Remarks:

sonicVision9 logged in 17 1/2" hole.
See bottom of the QC log for processing parameters.









330

335

340

345

350

355

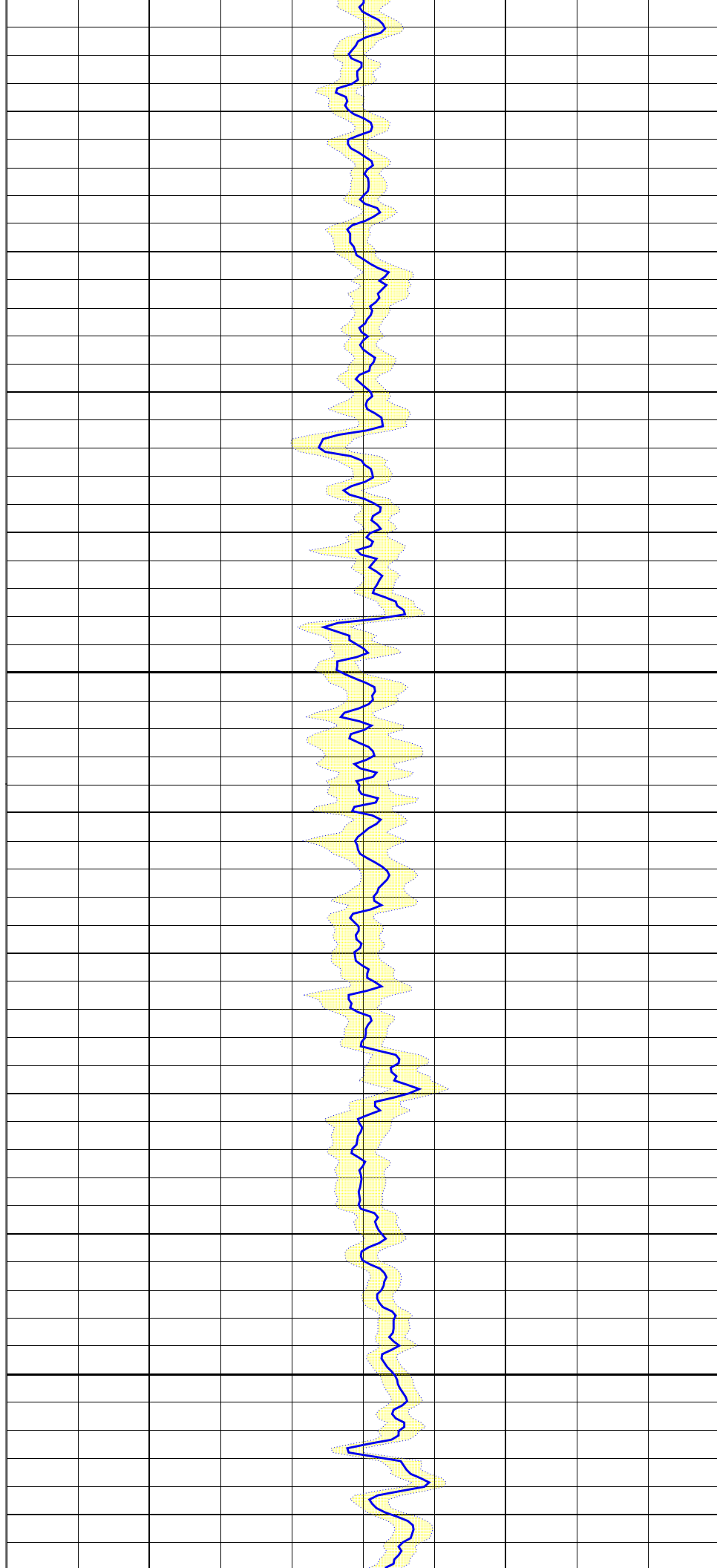
360

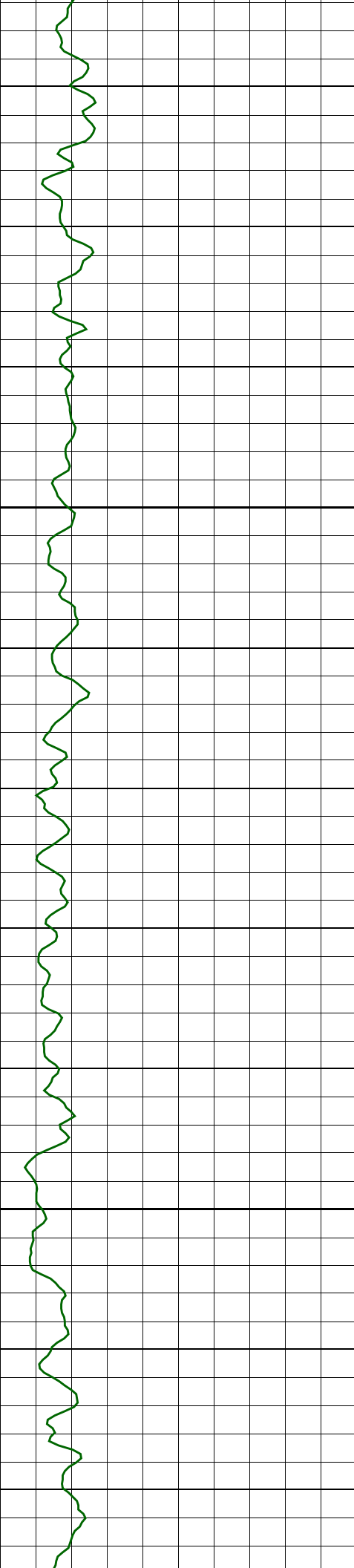
365

370

375

380





385

390

395

400

405

410

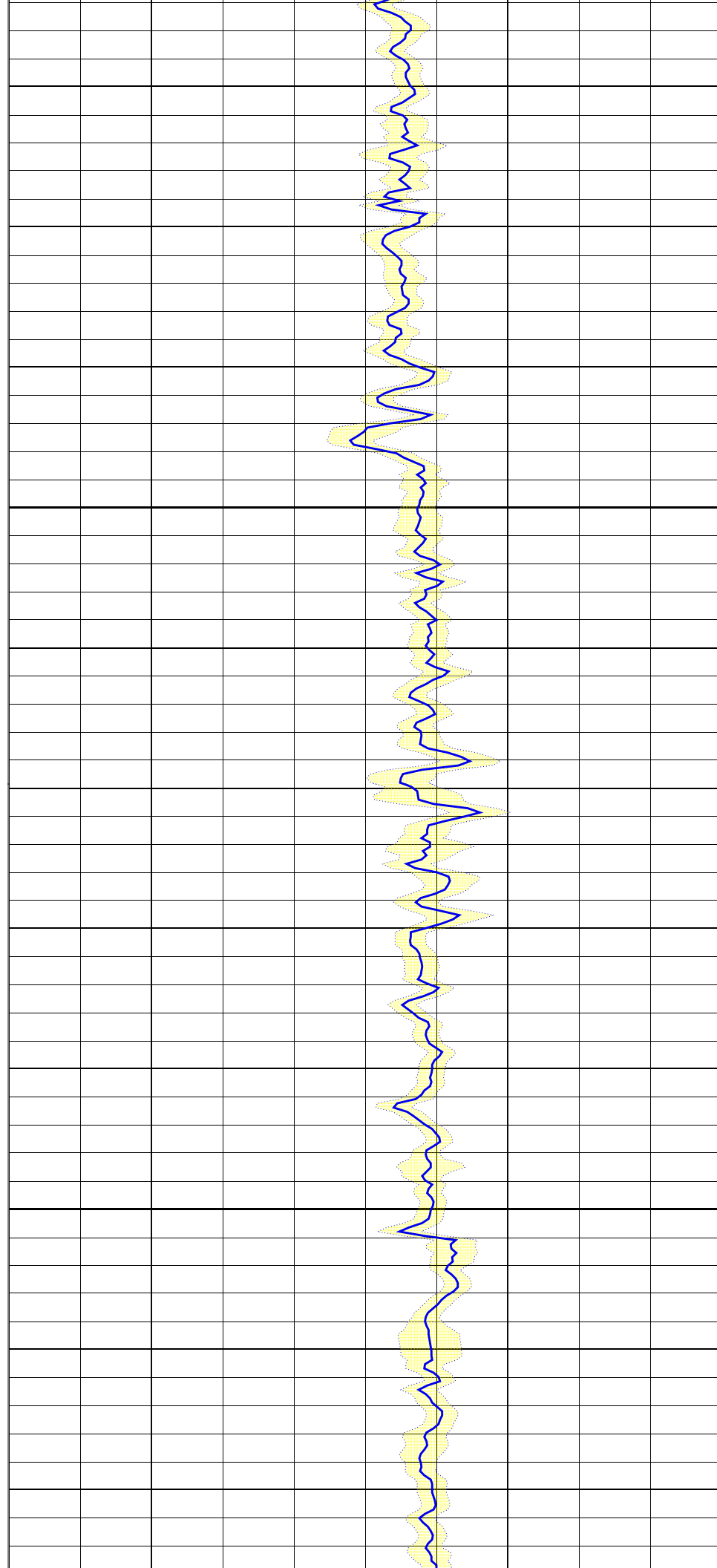
415

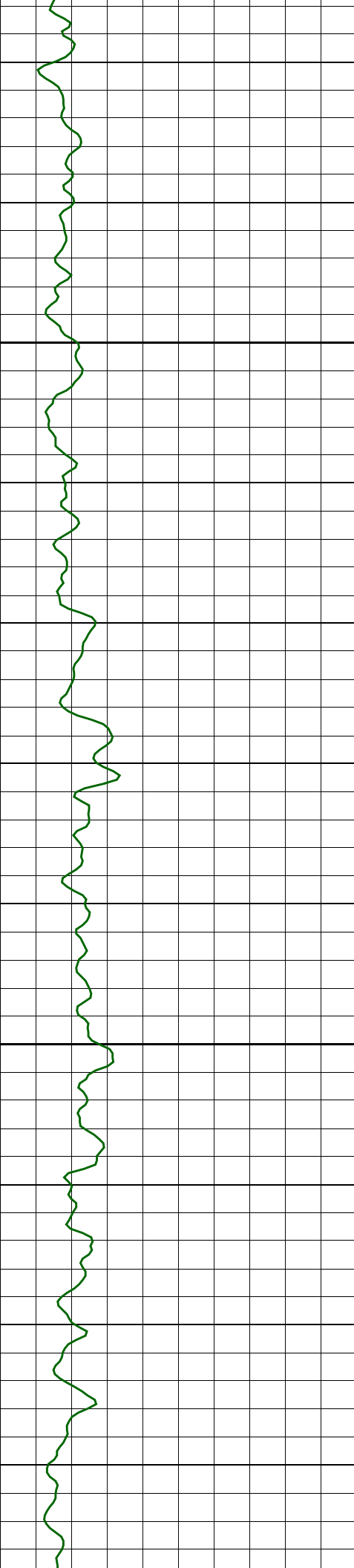
420

425

430

435





440

445

450

455

460

465

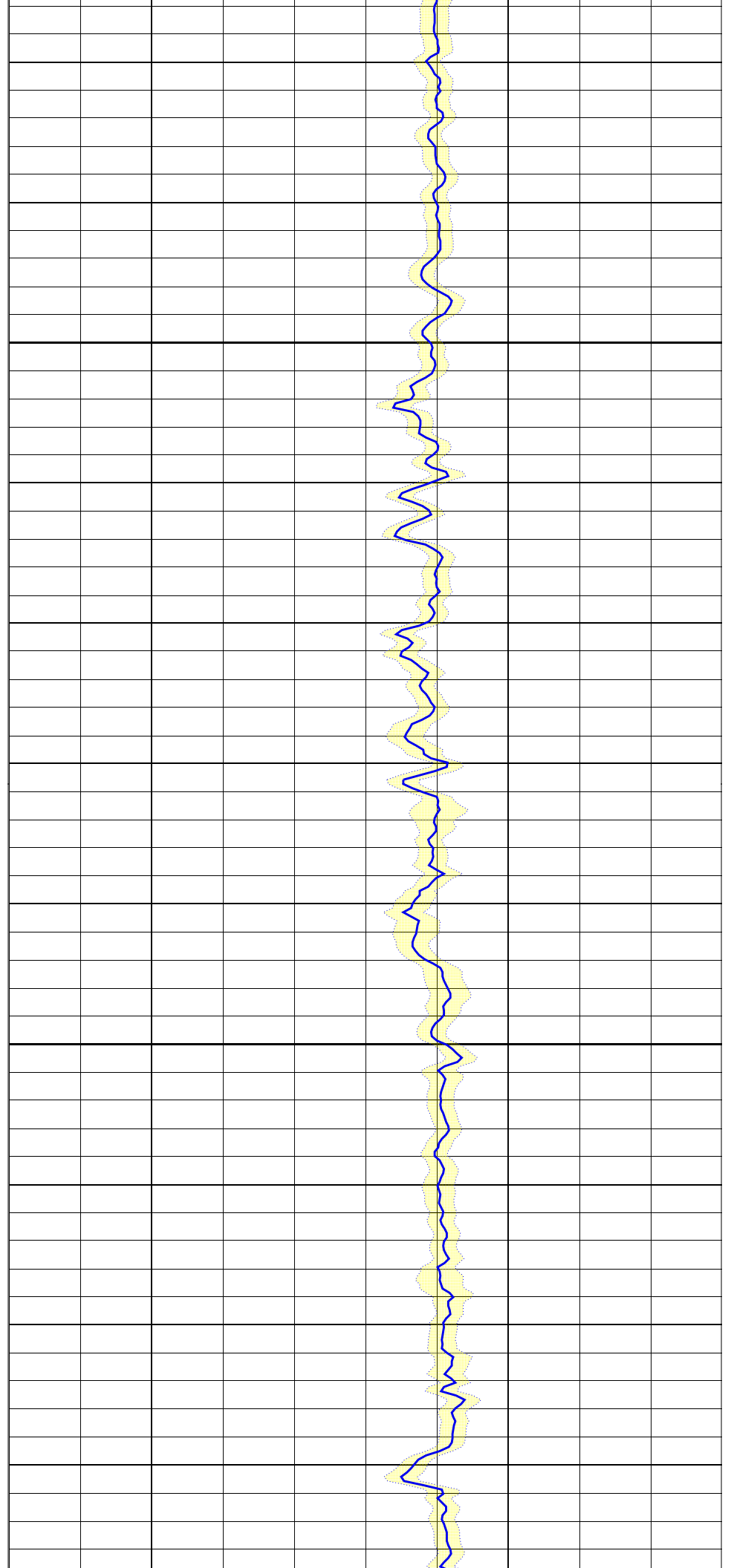
470

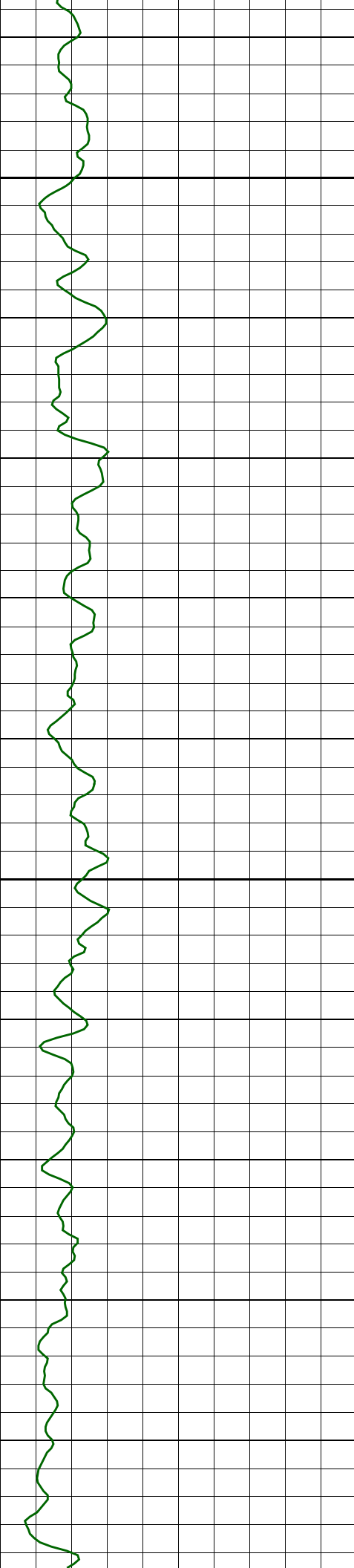
475

480

485

490





495

500

505

510

515

520

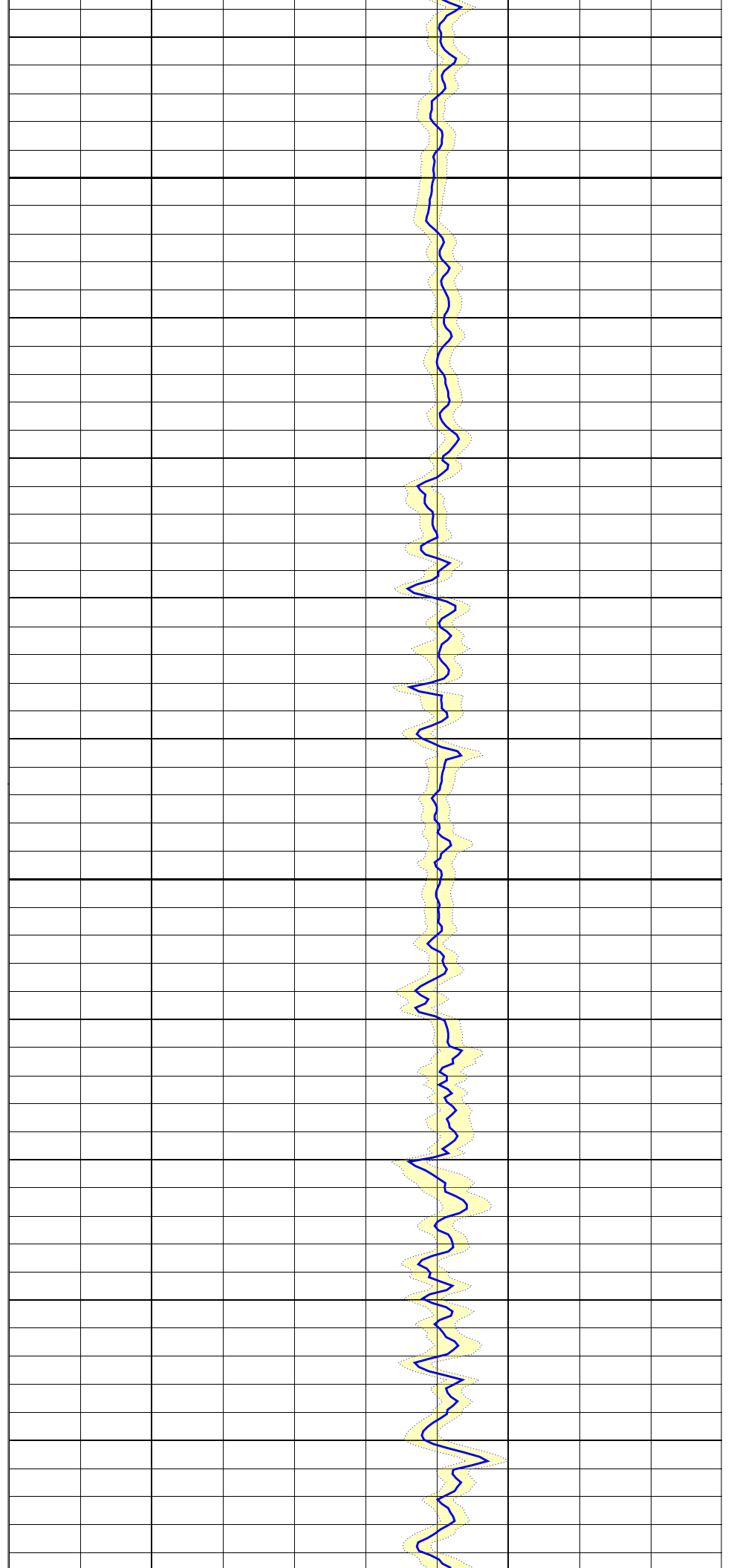
525

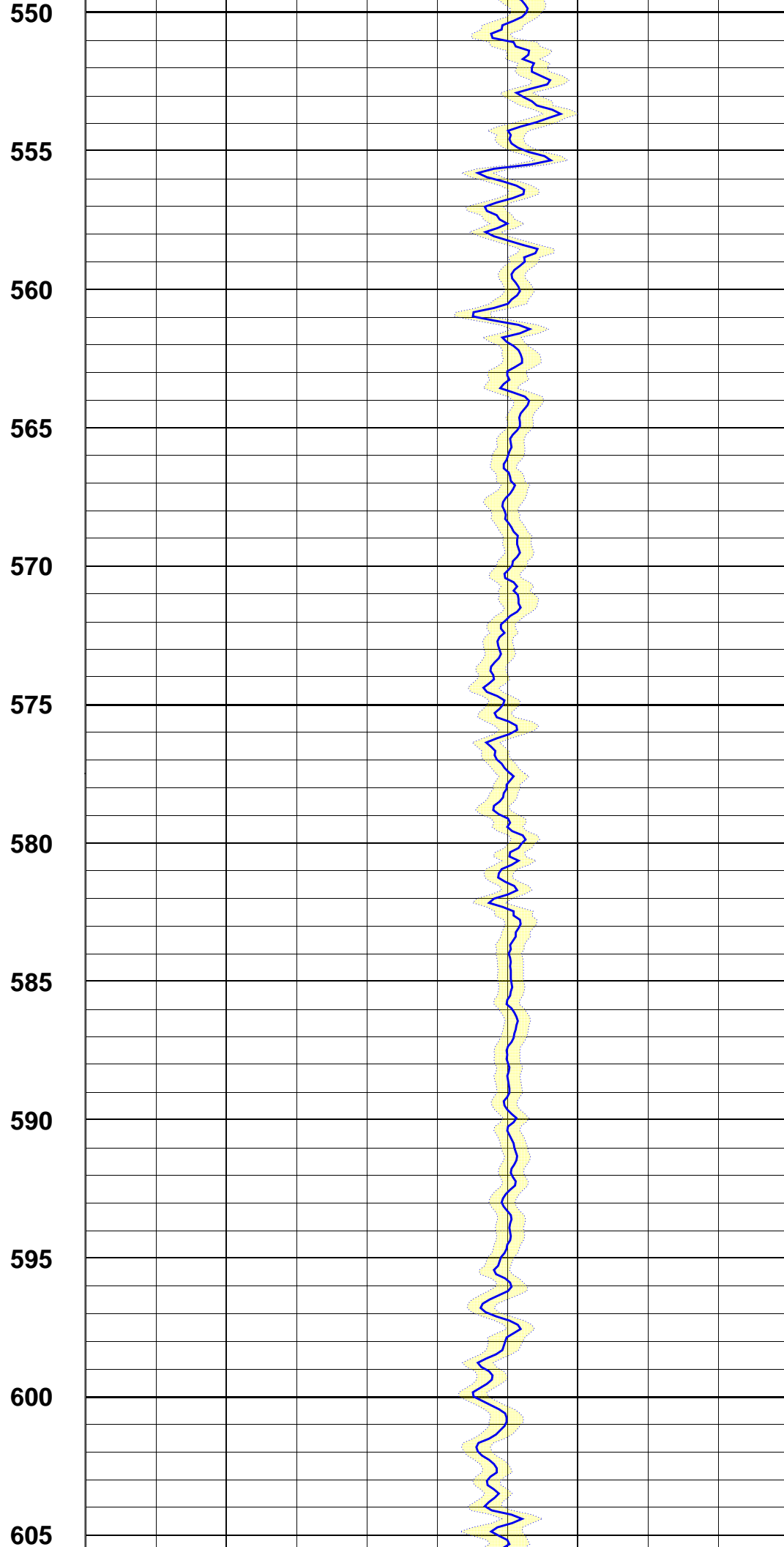
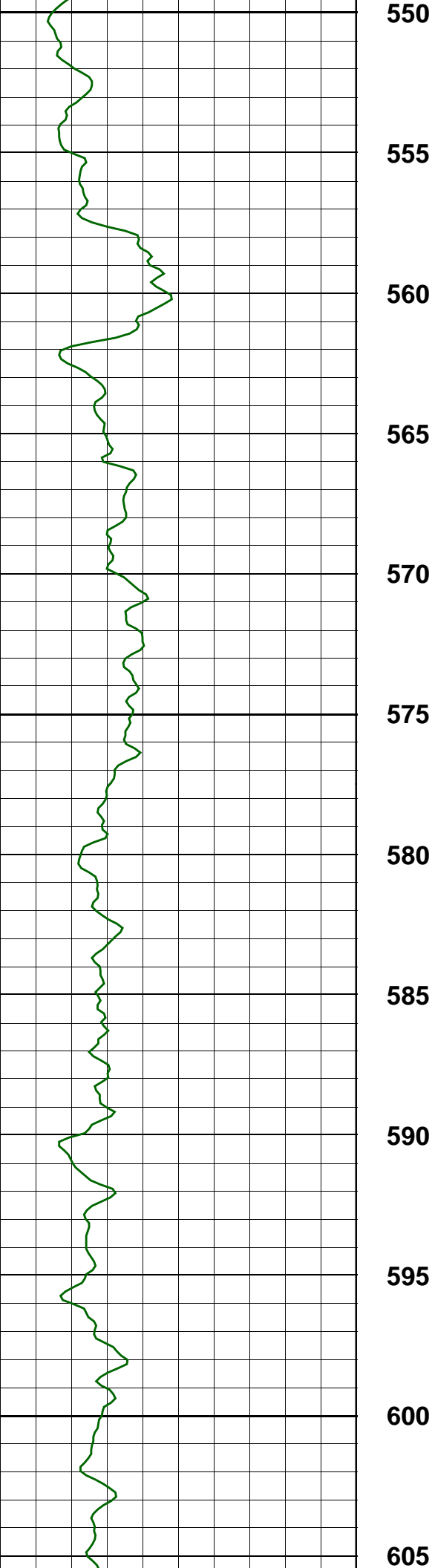
530

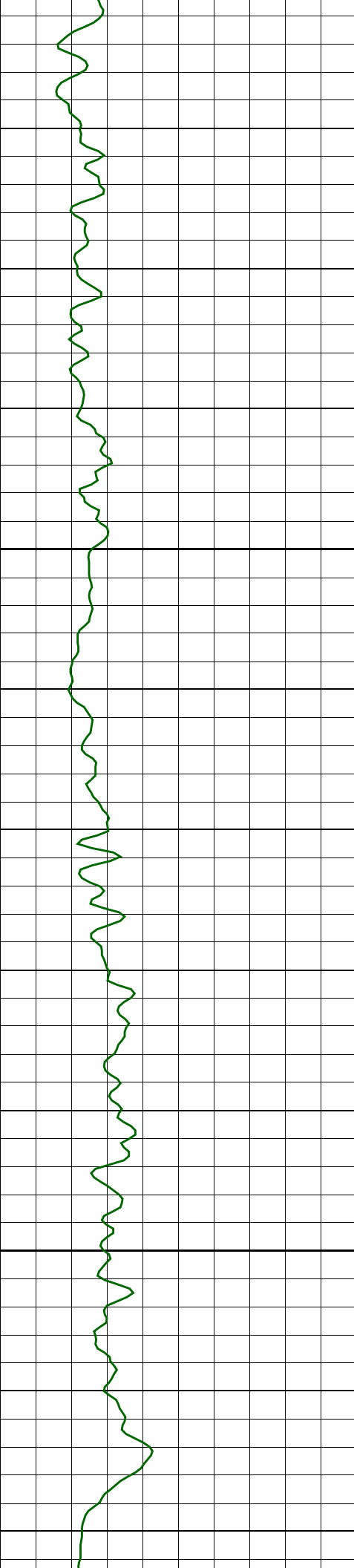
535

540

545







610

615

620

625

630

635

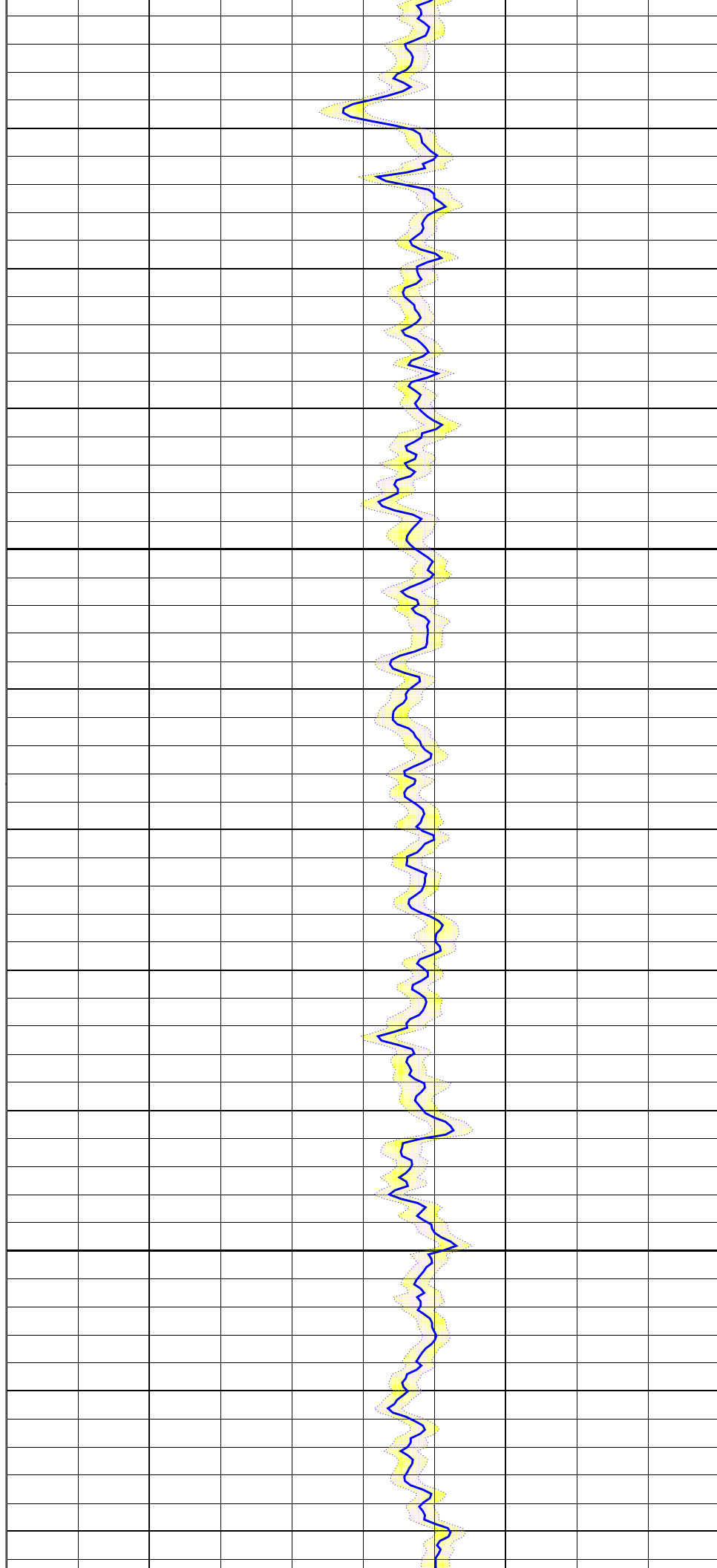
640

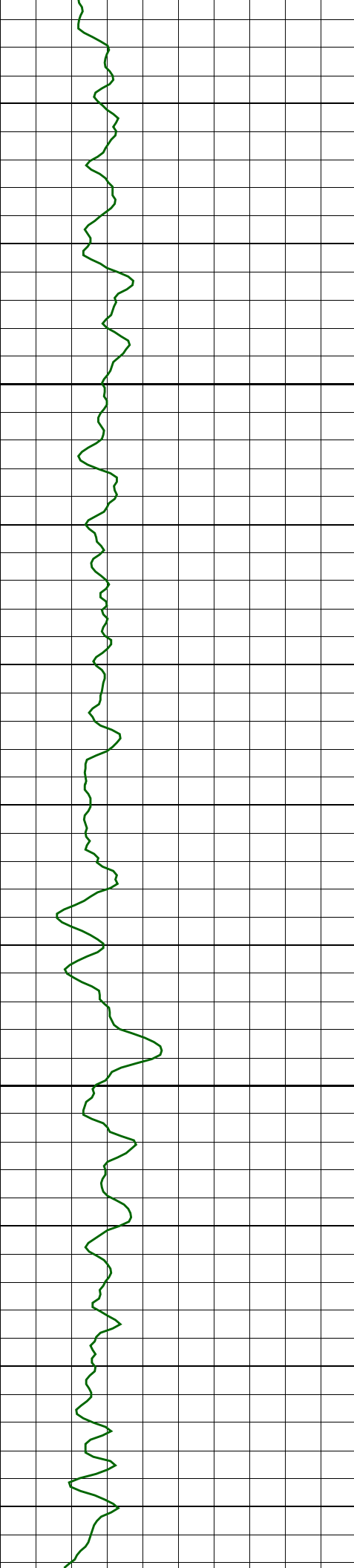
645

650

655

660





665

670

675

680

685

690

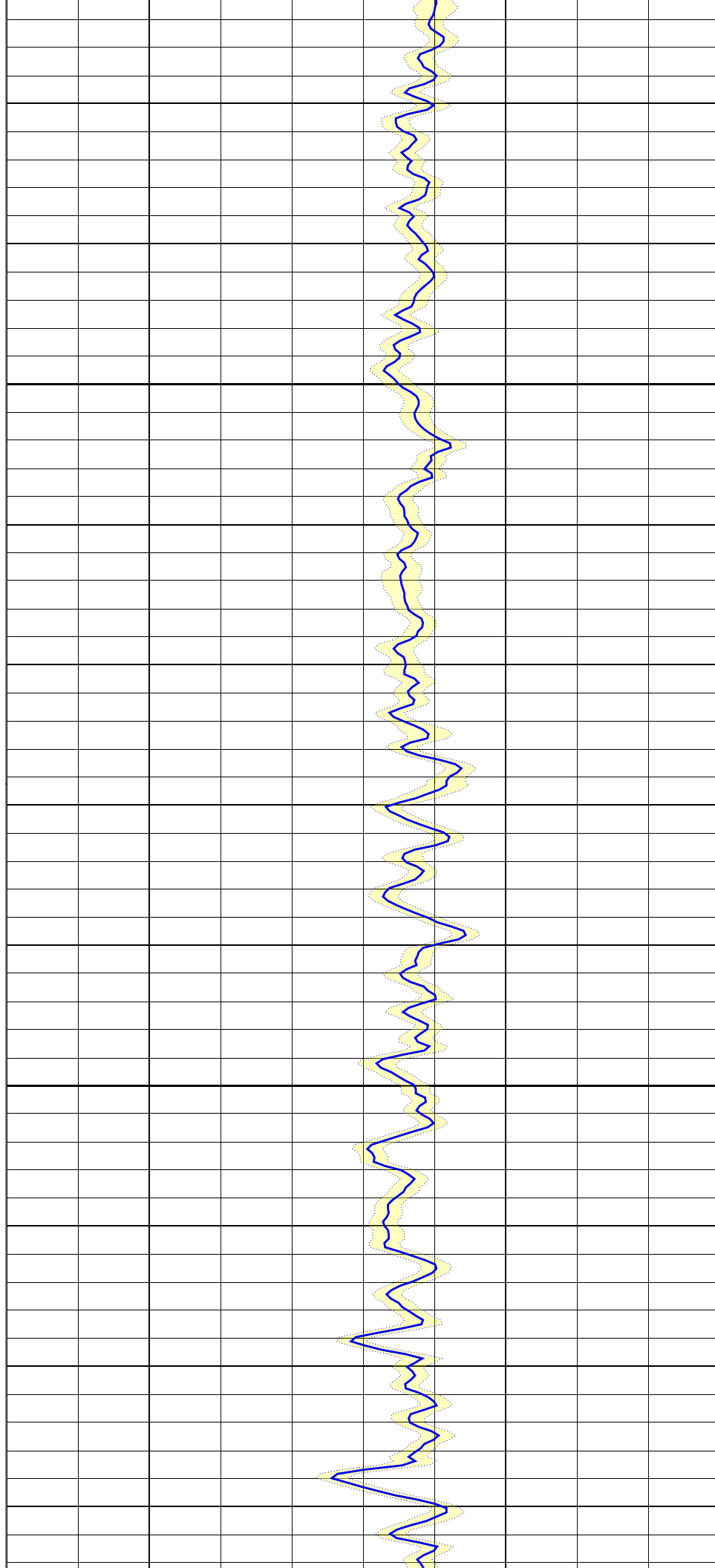
695

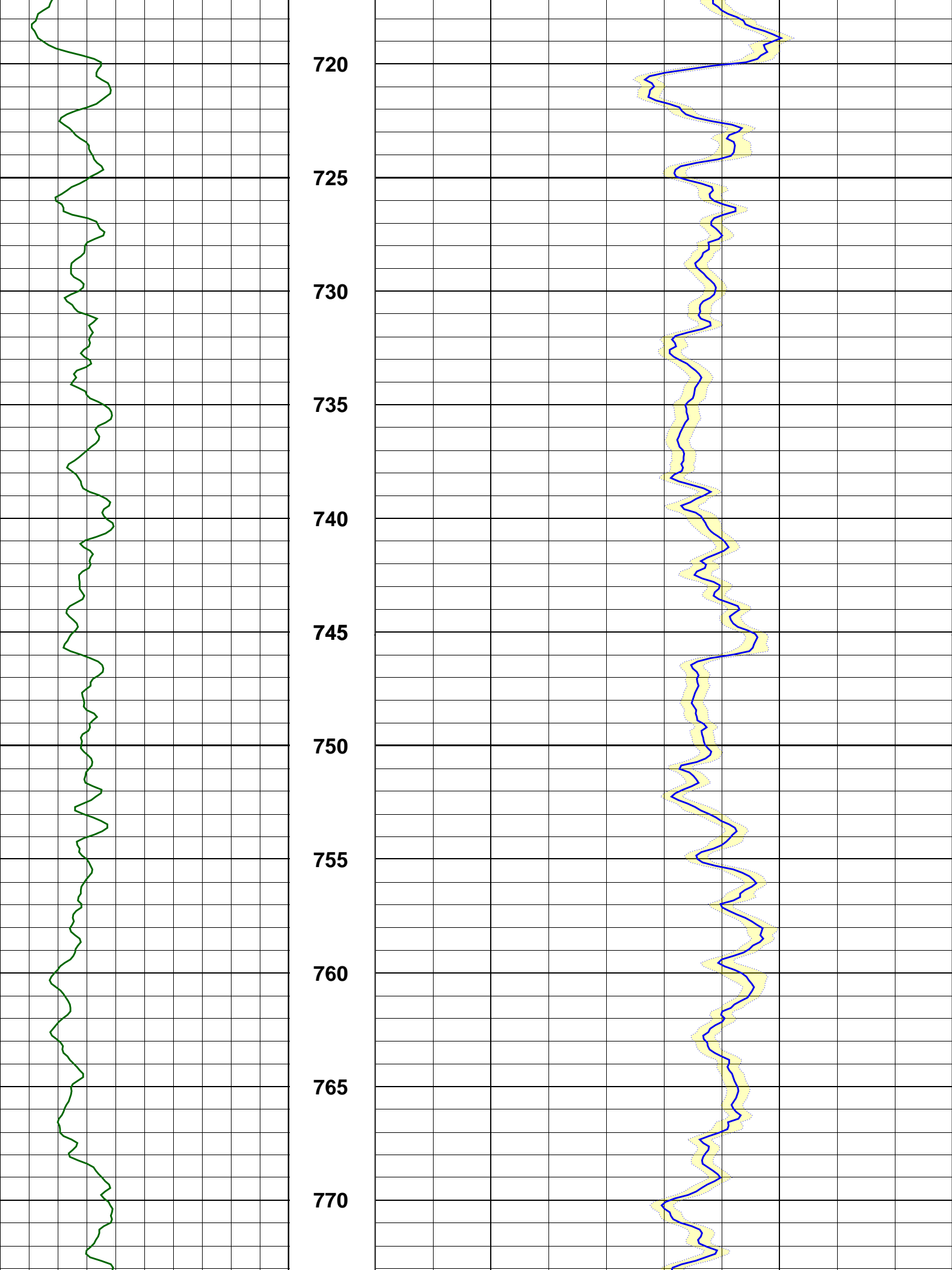
700

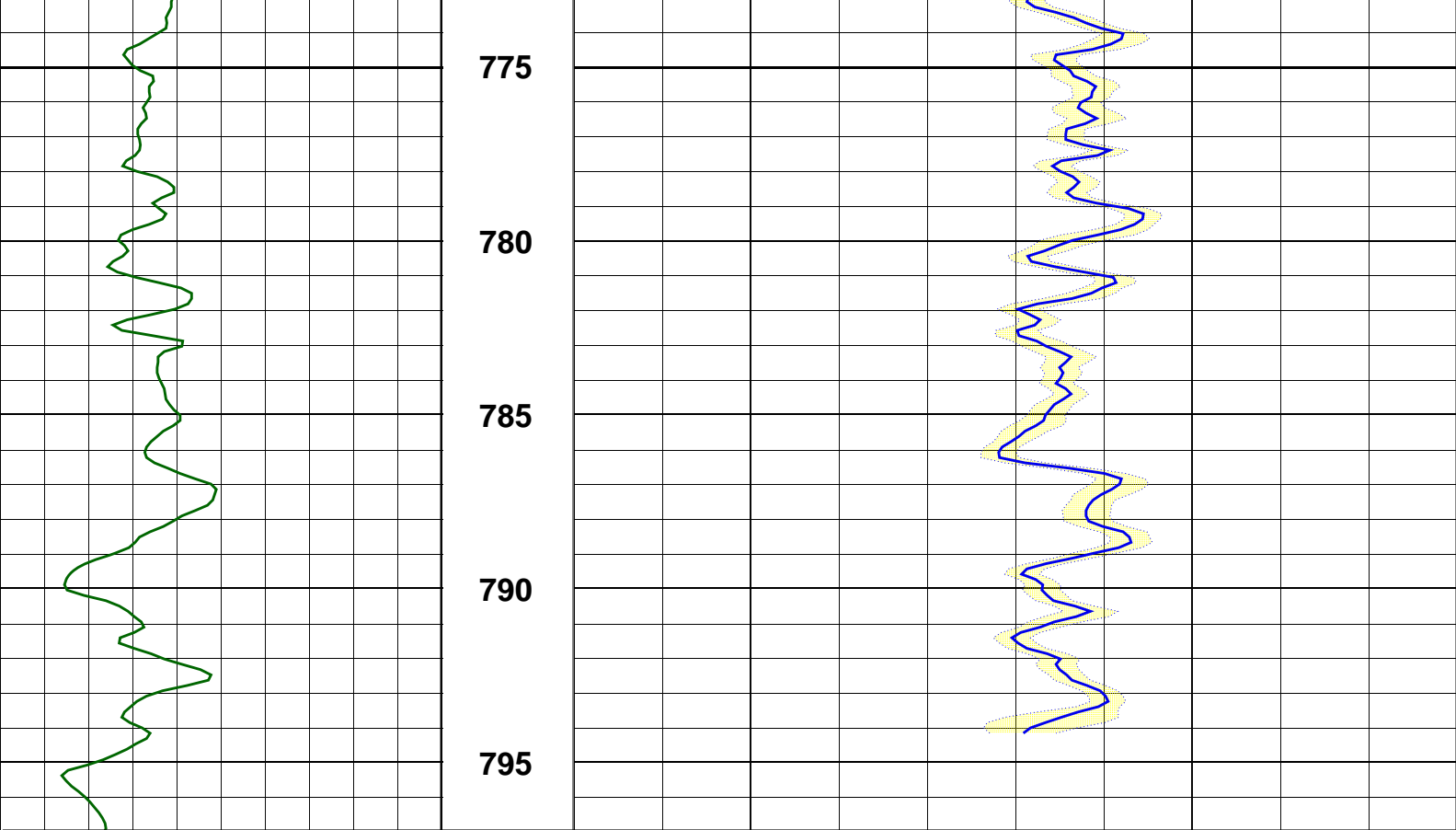
705

710

715

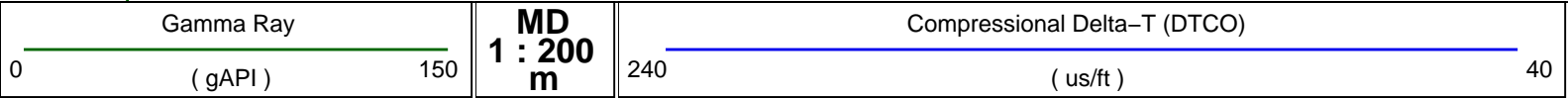






--- Finalization Result ---

1 MPS Compressional	Receiver	Absent levels=	378	
1 MPS Compressional	Transmitter	Absent levels=	1310	
1 MPS Shear	Receiver	Absent levels=	4215	
1 MPS Shear	Transmitter	Absent levels=	4211	
1 MPS Compressional	DDBHC	Absent levels=	351	*Selected*
1 MPS Shear	DDBHC	Absent levels=	4235	*Selected*



Monopole Compressional Processing QC

MD
1 : 200
m

Gamma Ray

0 (gAPI) 150

SpcRC
0 (Hz) 30000

SpcRS
-15000 (Hz) 15000

CfRC
0 (Hz) 30000

CfRS
-15000 (Hz) 15000

STPrjR

40 (us/ft) 240

DtRC

40 (us/ft) 240

DtRS

40 (us/ft) 240

WF VDL

400 (us) 3378

TICS

400 (us) 3378

TISS

400 (us) 3378

165

170

175

180

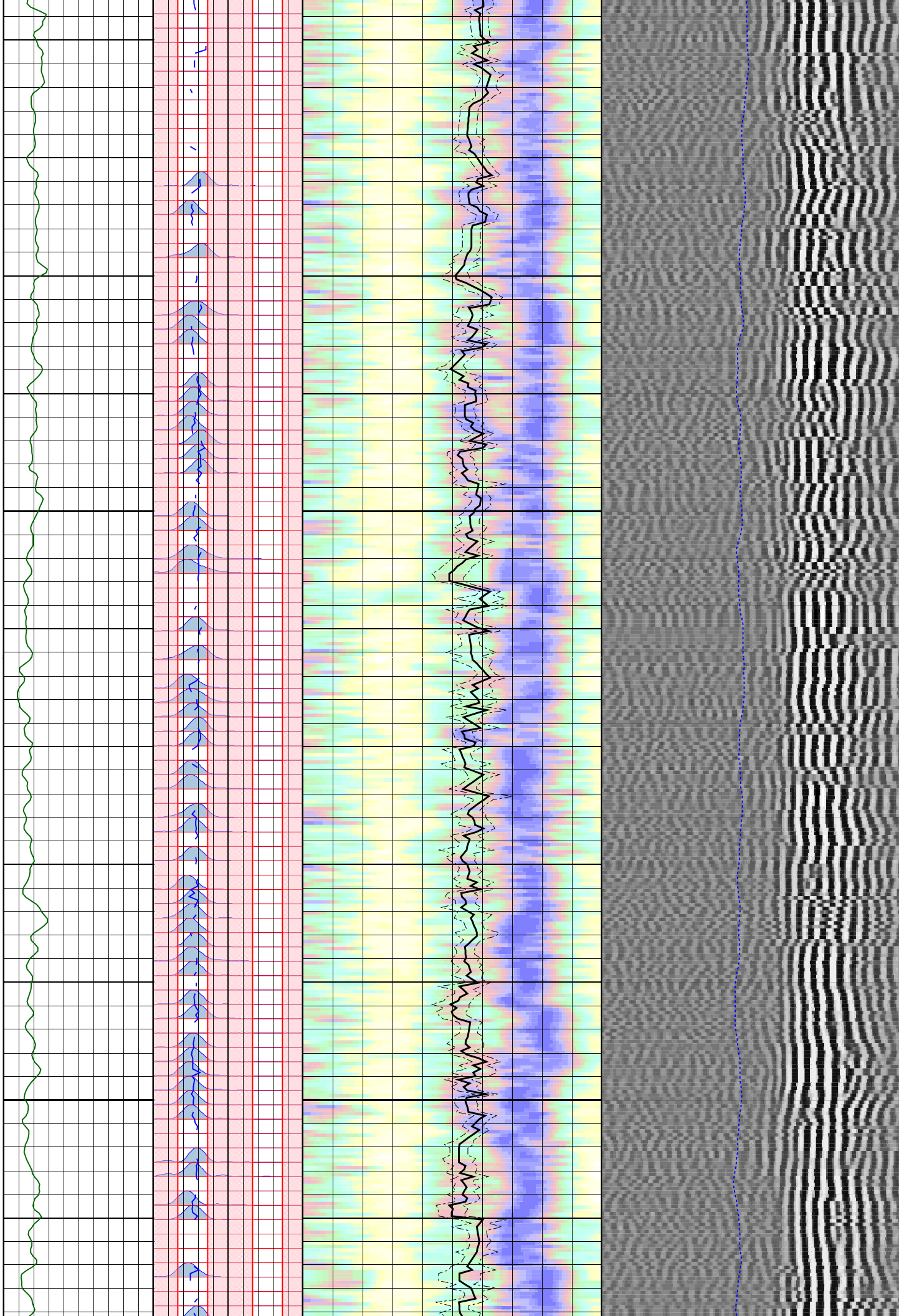
185

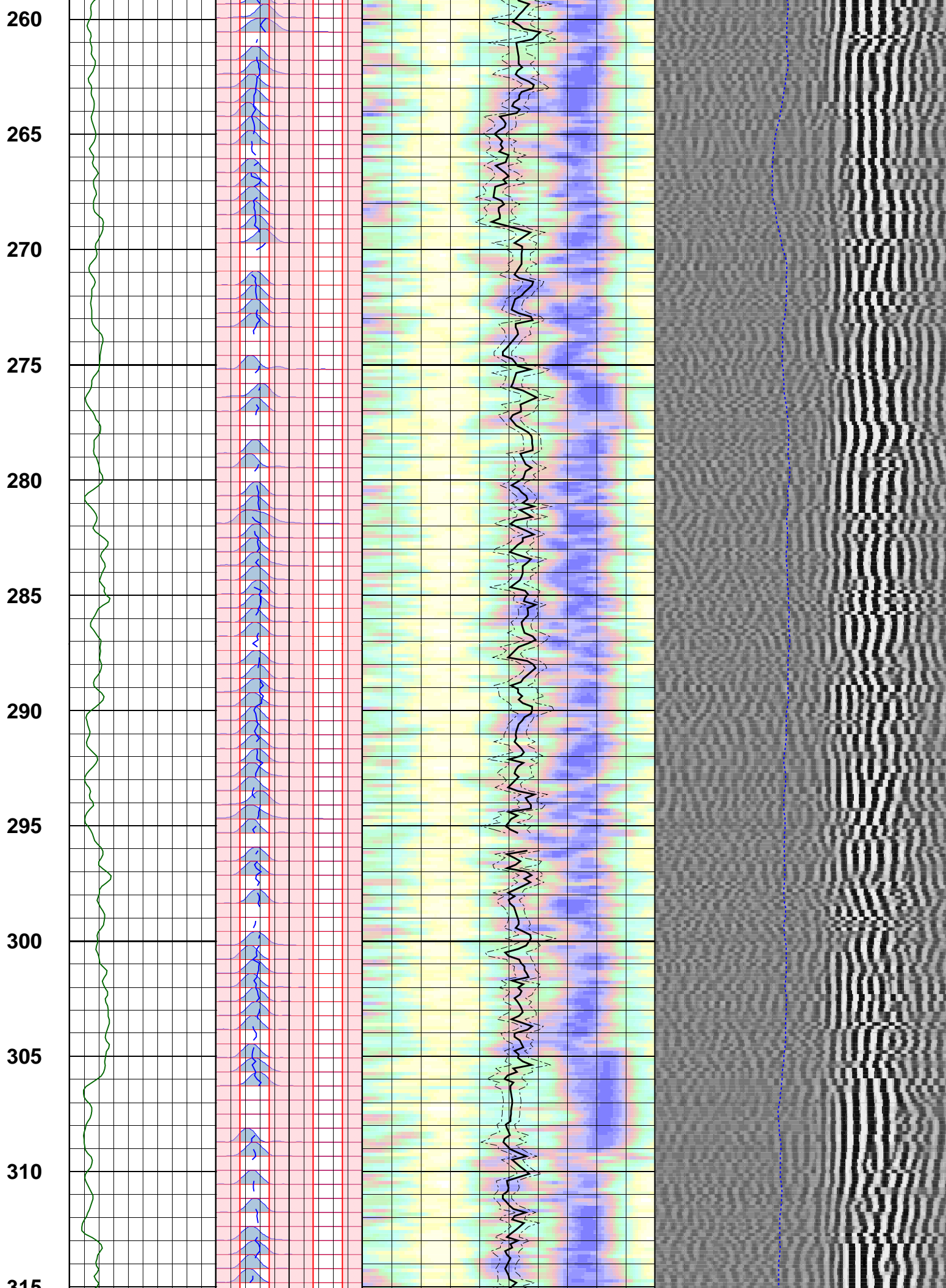
190

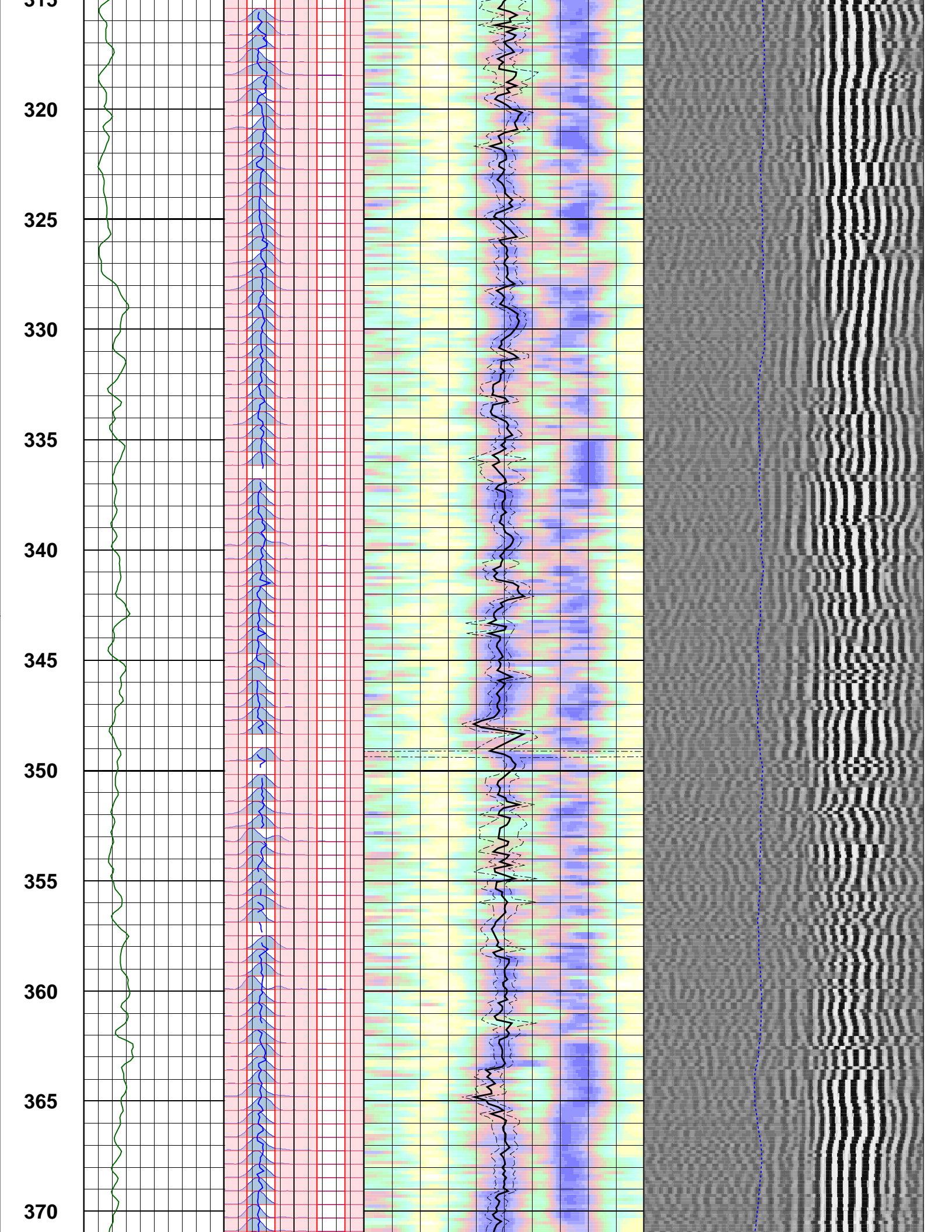
195

200

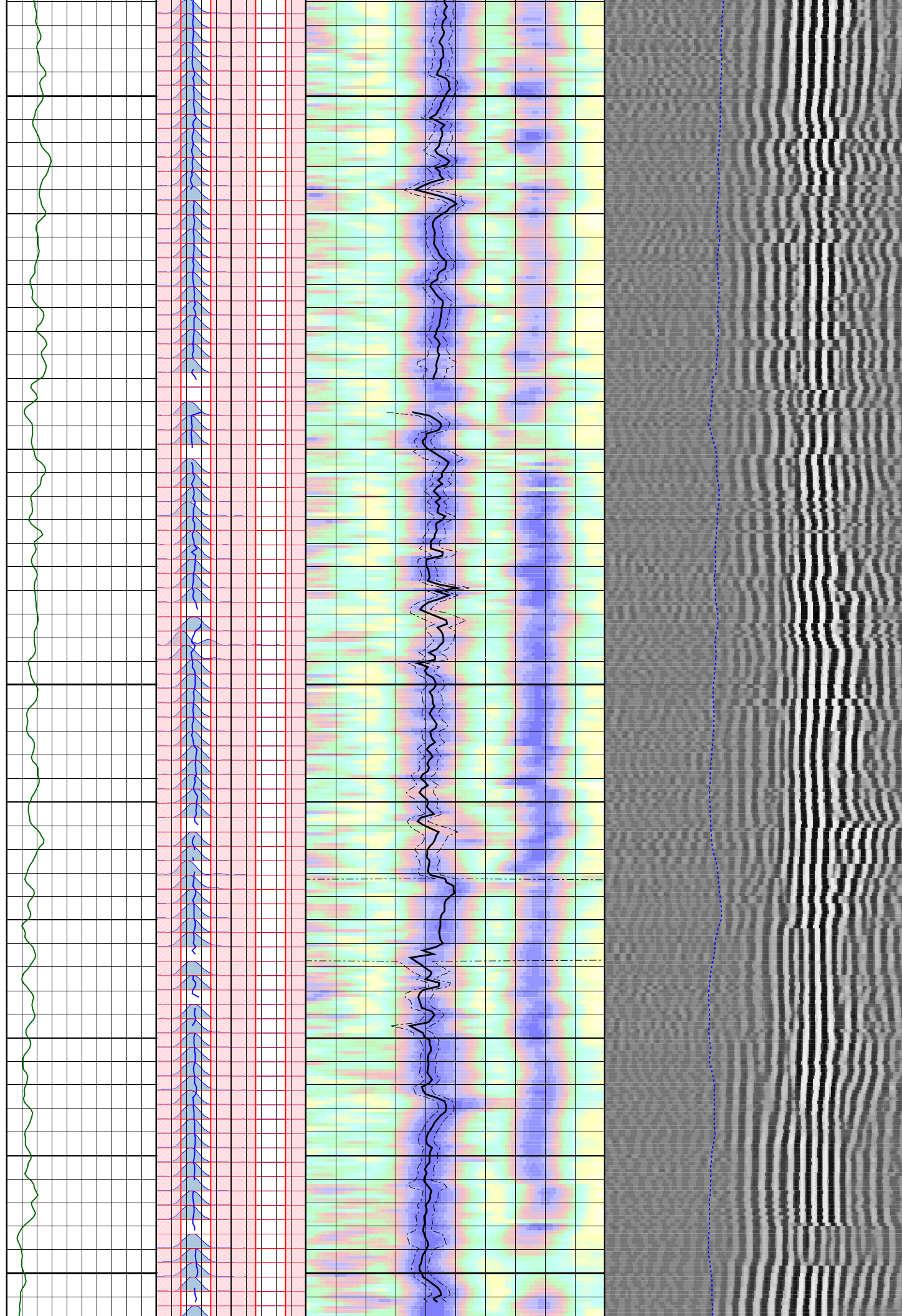
205
210
215
220
225
230
235
240
245
250
255







375
380
385
390
395
400
405
410
415
420
425



430

435

440

445

450

455

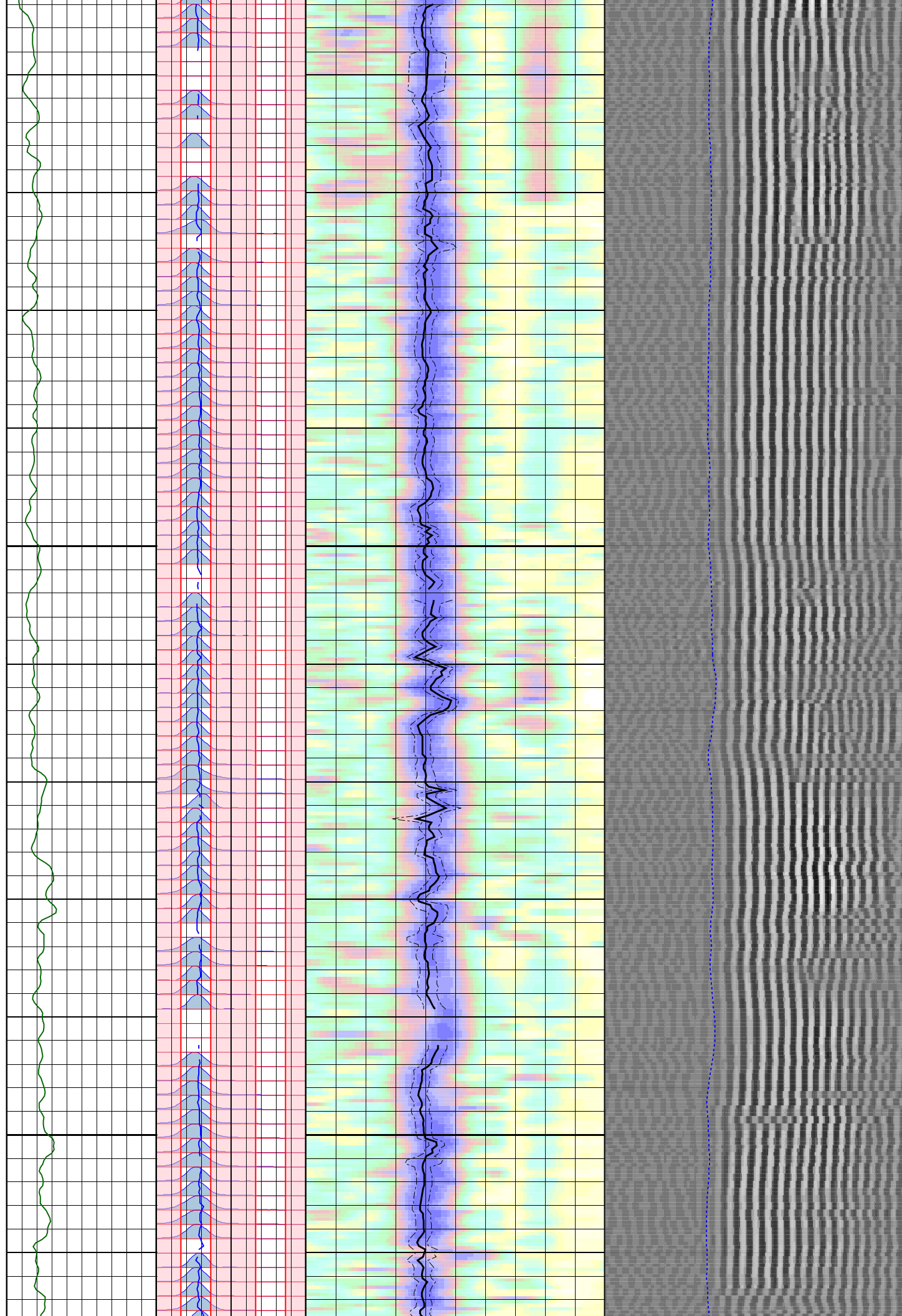
460

465

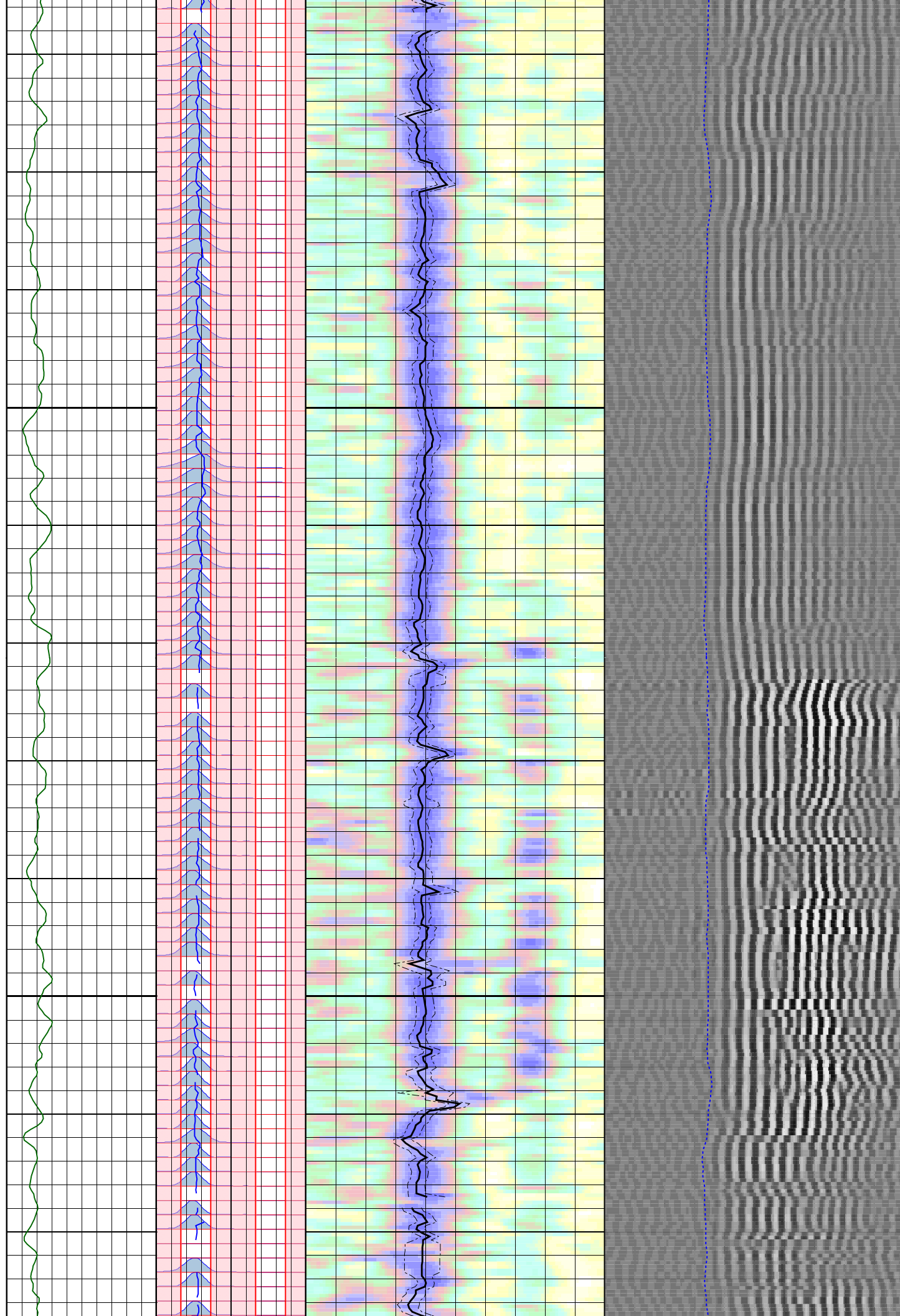
470

475

480



485
490
495
500
505
510
515
520
525
530
535



540

545

550

555

560

565

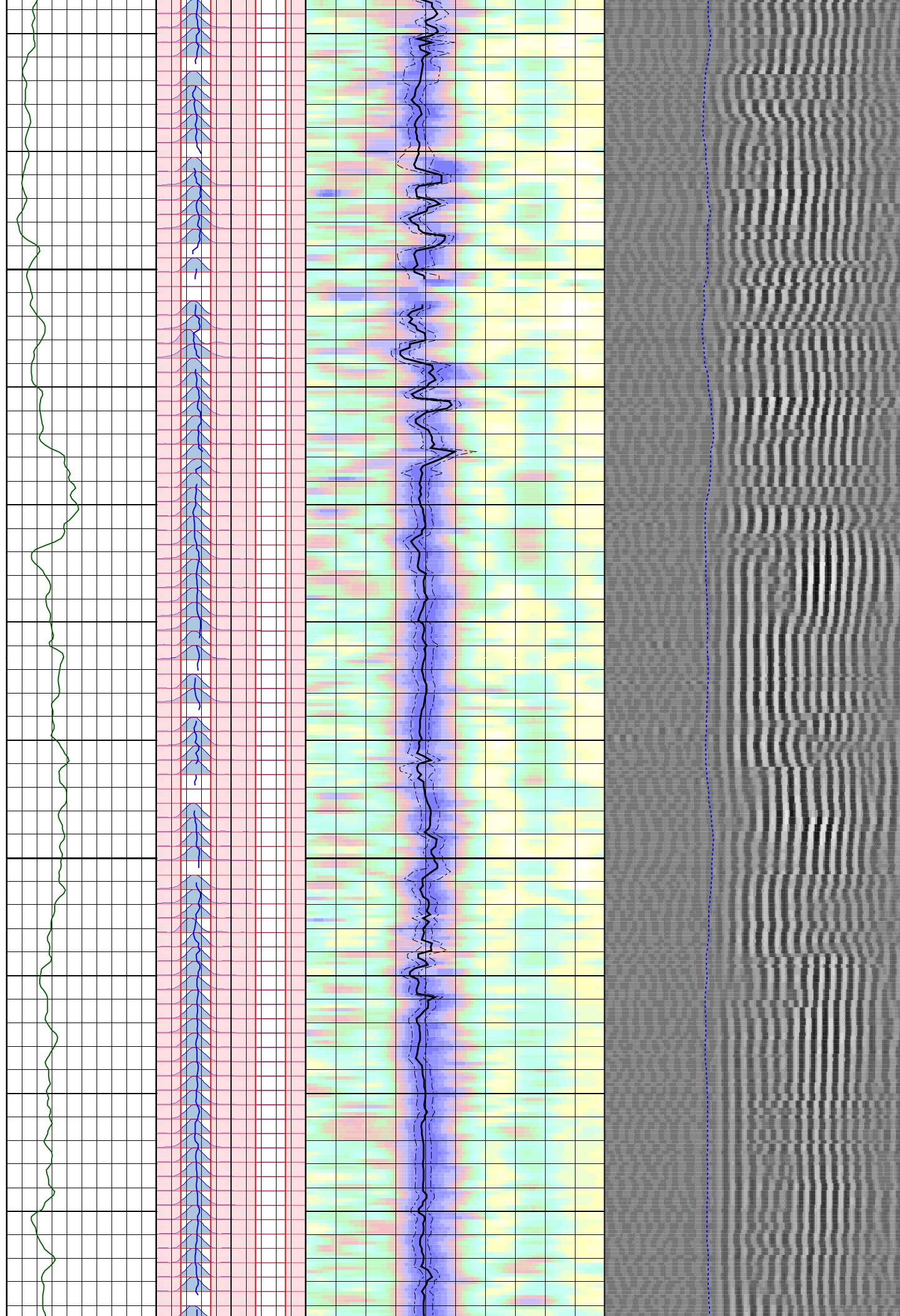
570

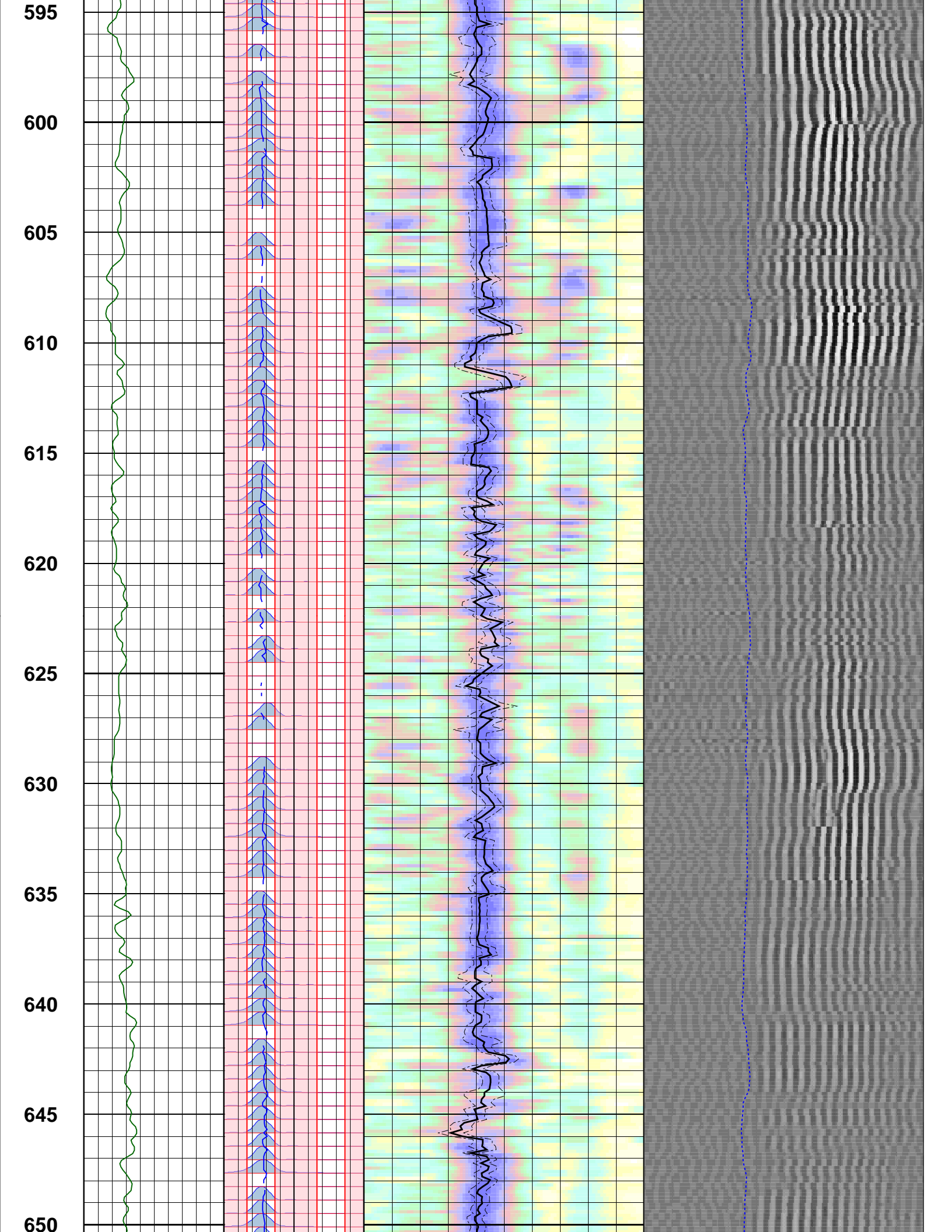
575

580

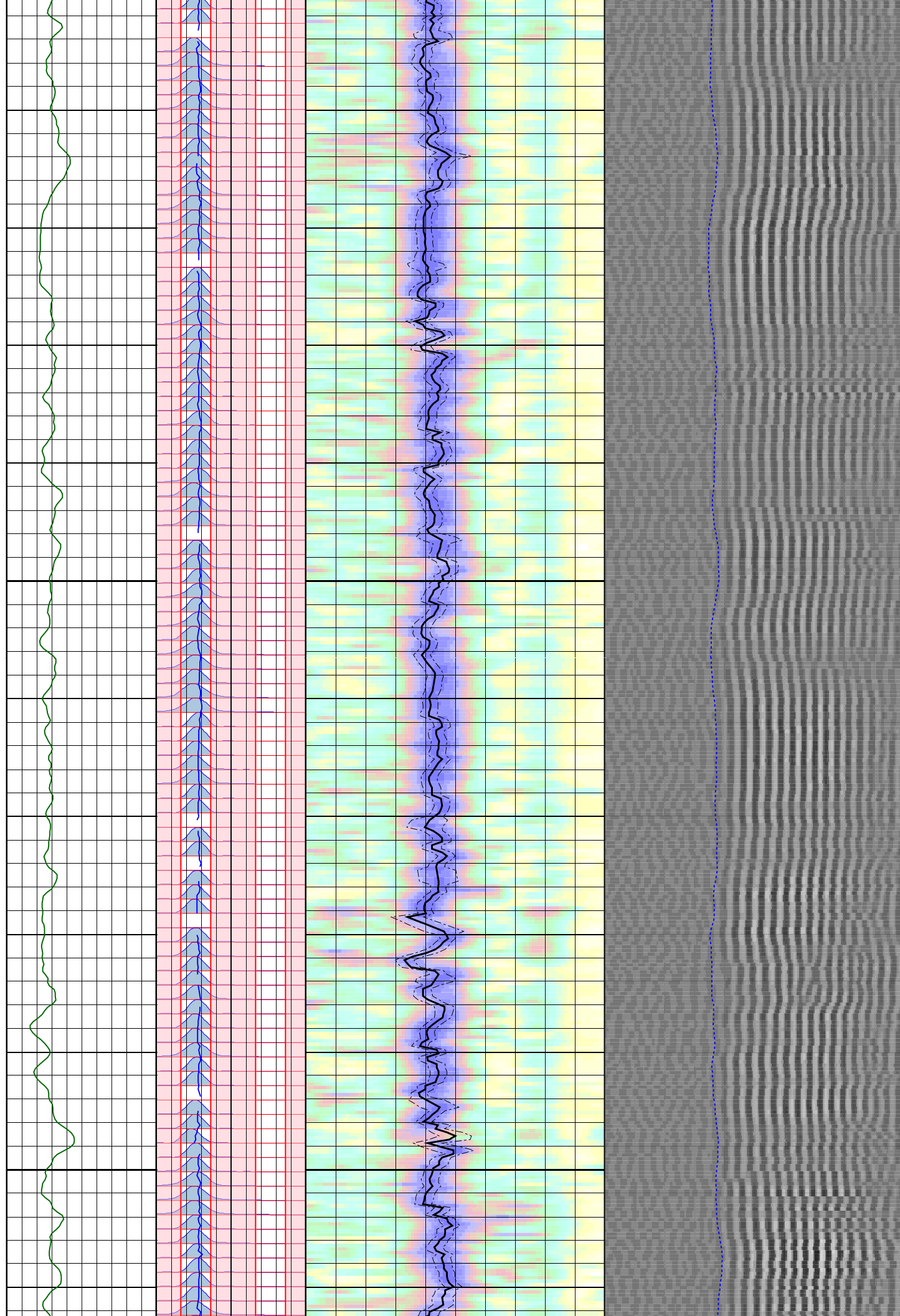
585

590

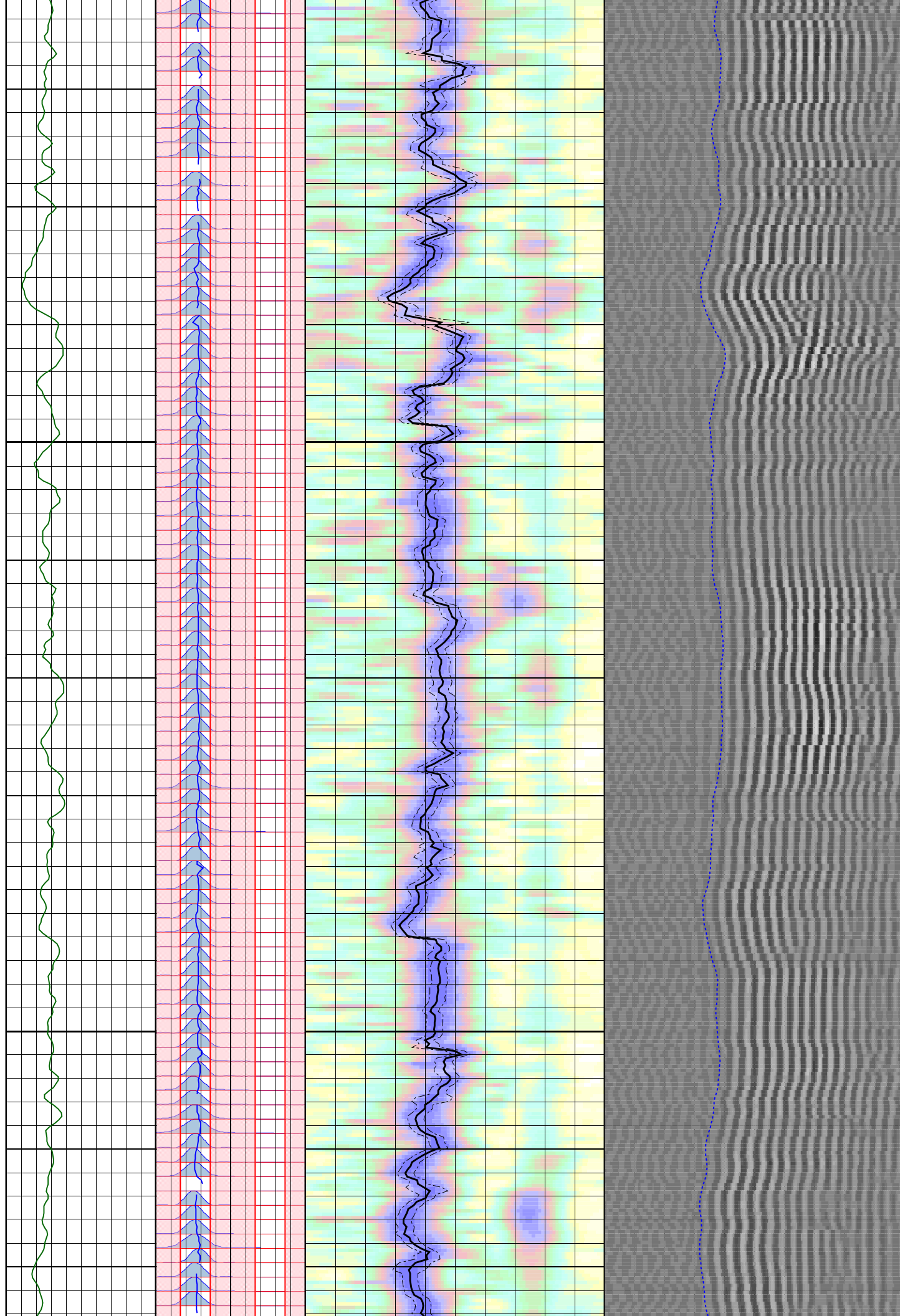


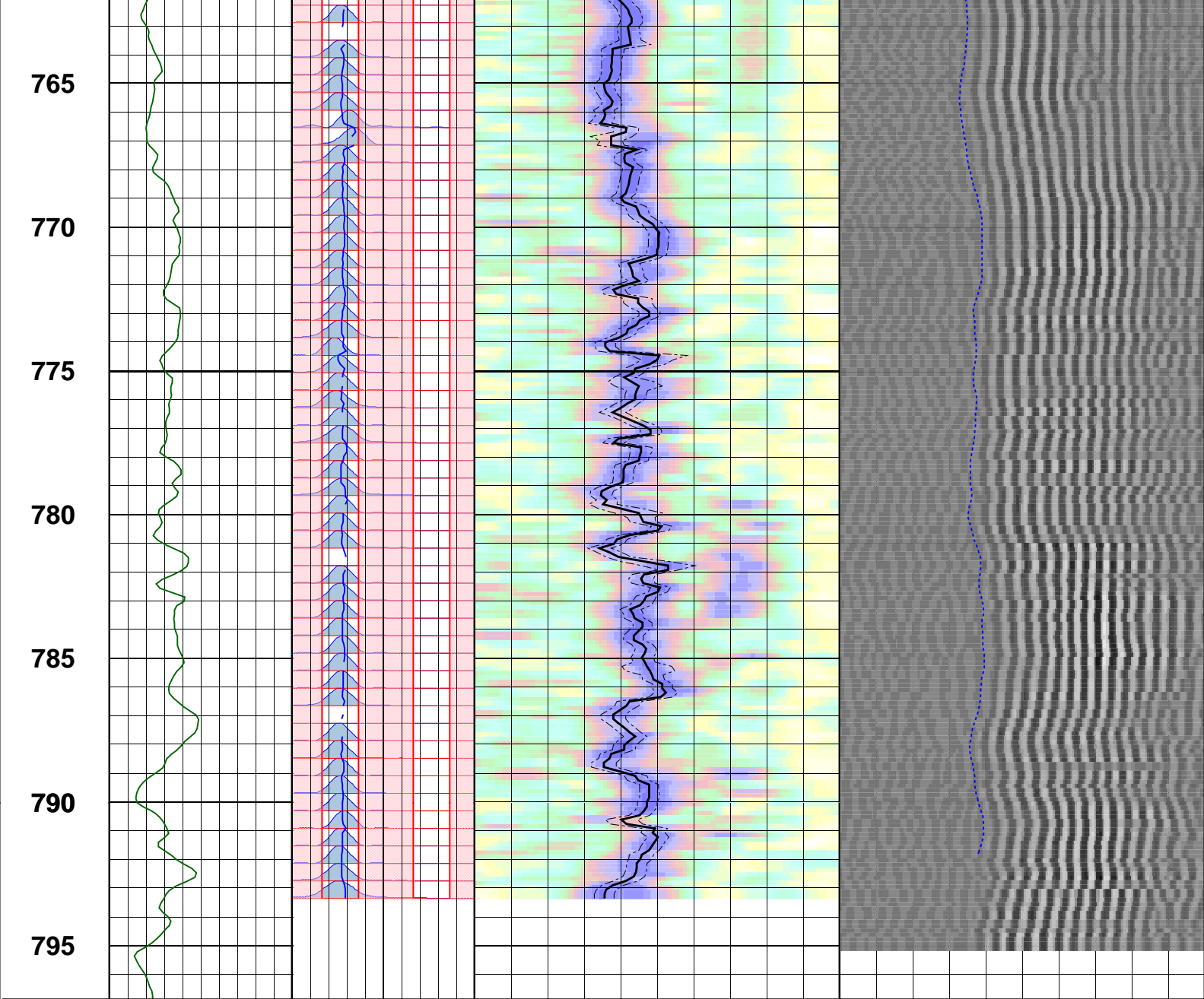


655
660
665
670
675
680
685
690
695
700
705



710
715
720
725
730
735
740
745
750
755
760

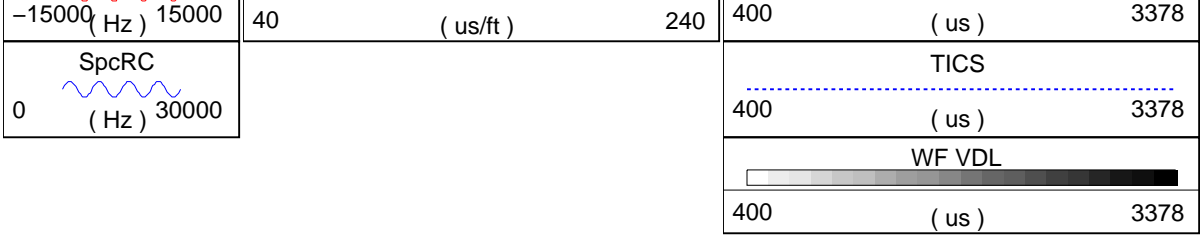




Customized Process: Start Depth (796.37 m), Stop Depth (151.154 m), Logging Mode (sonicVISION – MPS_WIDE)
Noise Cut Filtering(Yes – Median Residual, WS 720), Casing Cut Filtering(No)
WF_FLG(1 1 1 1), MUD_TYPE(WBM), STCAL(Full Array)
TRSPAC(3.00228), RRSPAC(0 0.2032 0.4064 0.6096)
Mud Slowness (no input)
Hole Diameter (no input)
Zoning Guide (no input)
Tracking Guide (no input)

--- Zone Top Depth (0), Zone Name (Zone1) ---
SFTY(Slow), BHS(OPEN), CSIZ(13.375), HDM(Fix*), HD(17.5), DTMUD(200)
TWI(238.281), SLL(39.7135), SUL(279.98*), SST(1.98568), TLL(400), TUL(3378.52), TST(39.7135)
SBW(1200*), SBO(250*), SWD(20), TWD(1742), SEM(0.35*), FLENG(47*), FLOW(5000*), FHIGH(11000*)
TKO_MODEL_ORDER(2), TKO_TOL(50) TKO_FLOW(0), TKO_FHIGH(12000)

MD 1 : 200 m	Gamma Ray <div>0 (gAPI) 150</div>	CfRS <div>-15000 (Hz) 15000</div>	DtRS <div>40 (us/ft) 240</div>	TISS
		CfRC <div>0 (Hz) 30000</div>	DtRC <div>40 (us/ft) 240</div>	
		SpcRS <div></div>	STPrJR <div></div>	



Company: Beach Petroleum
Well: Spikey Beach-1
FIELD: T38
Country Australia
State Tasmania



Date Logged: 09-Sep-2009 Date Processed: 09-Sep-2009