



Company : Woodside Energy Limited

Well : Somerset-1

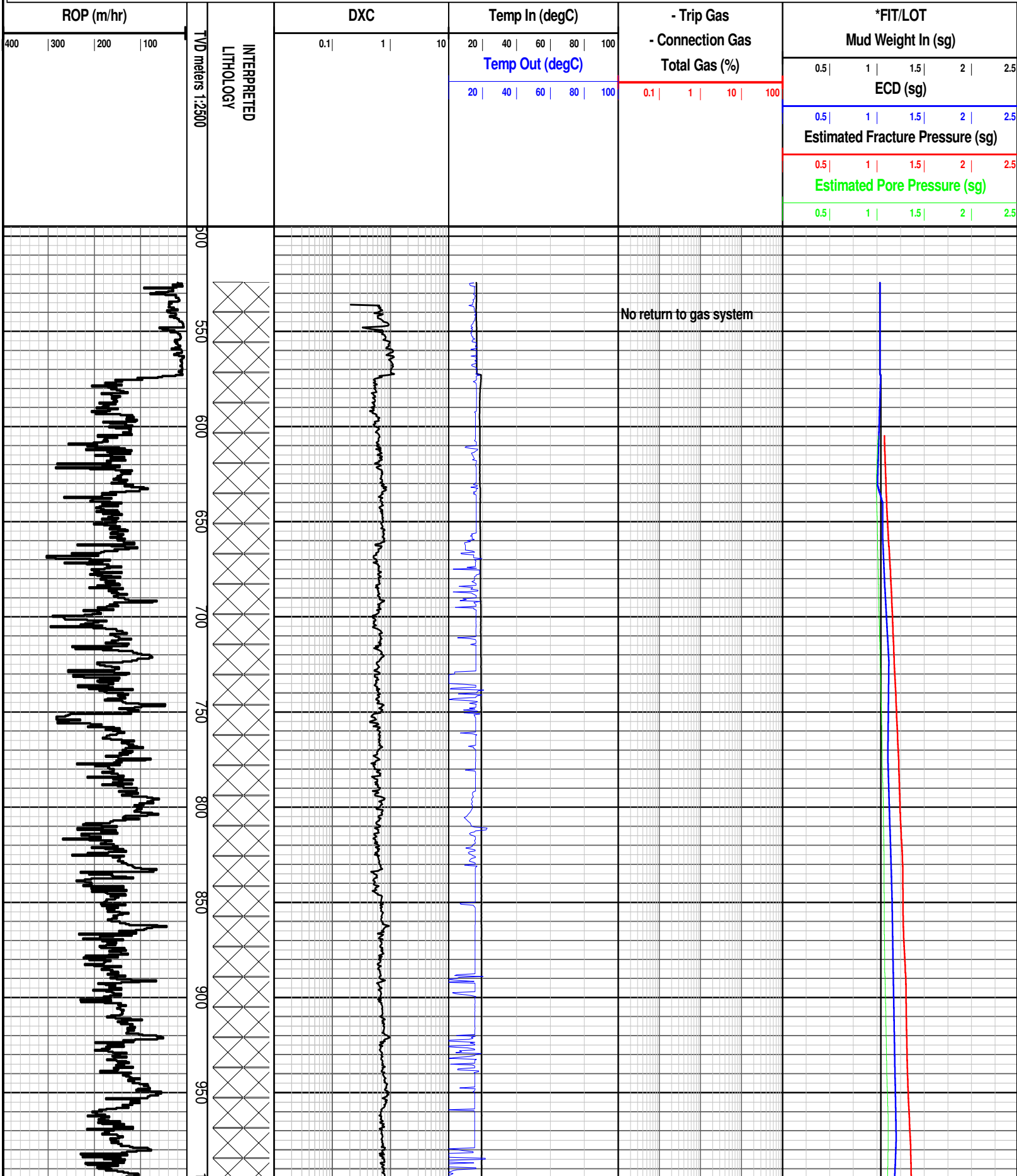
Interval : 495.00 - 3149.34 meters

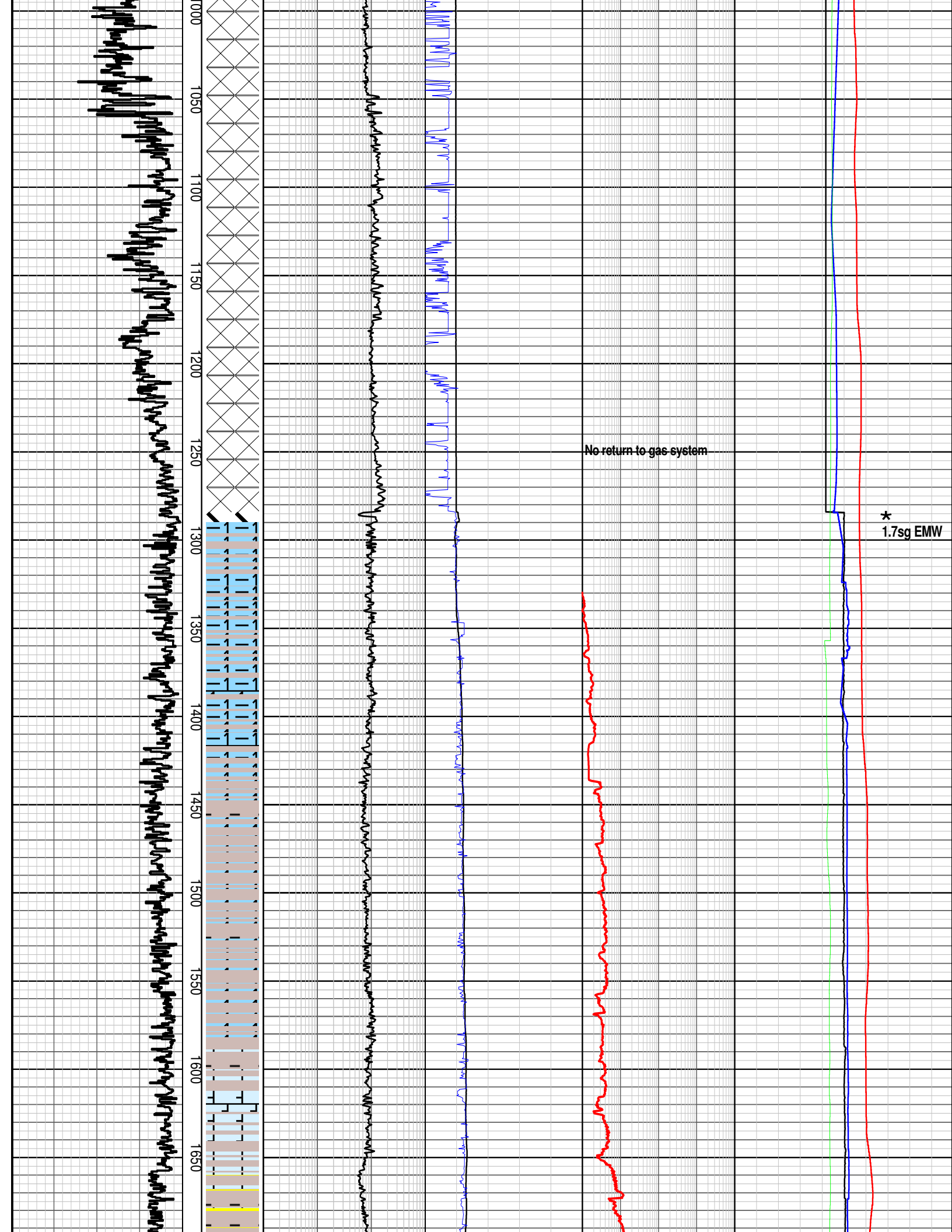
Created : 29/Oct/2009 2:32:29 PM

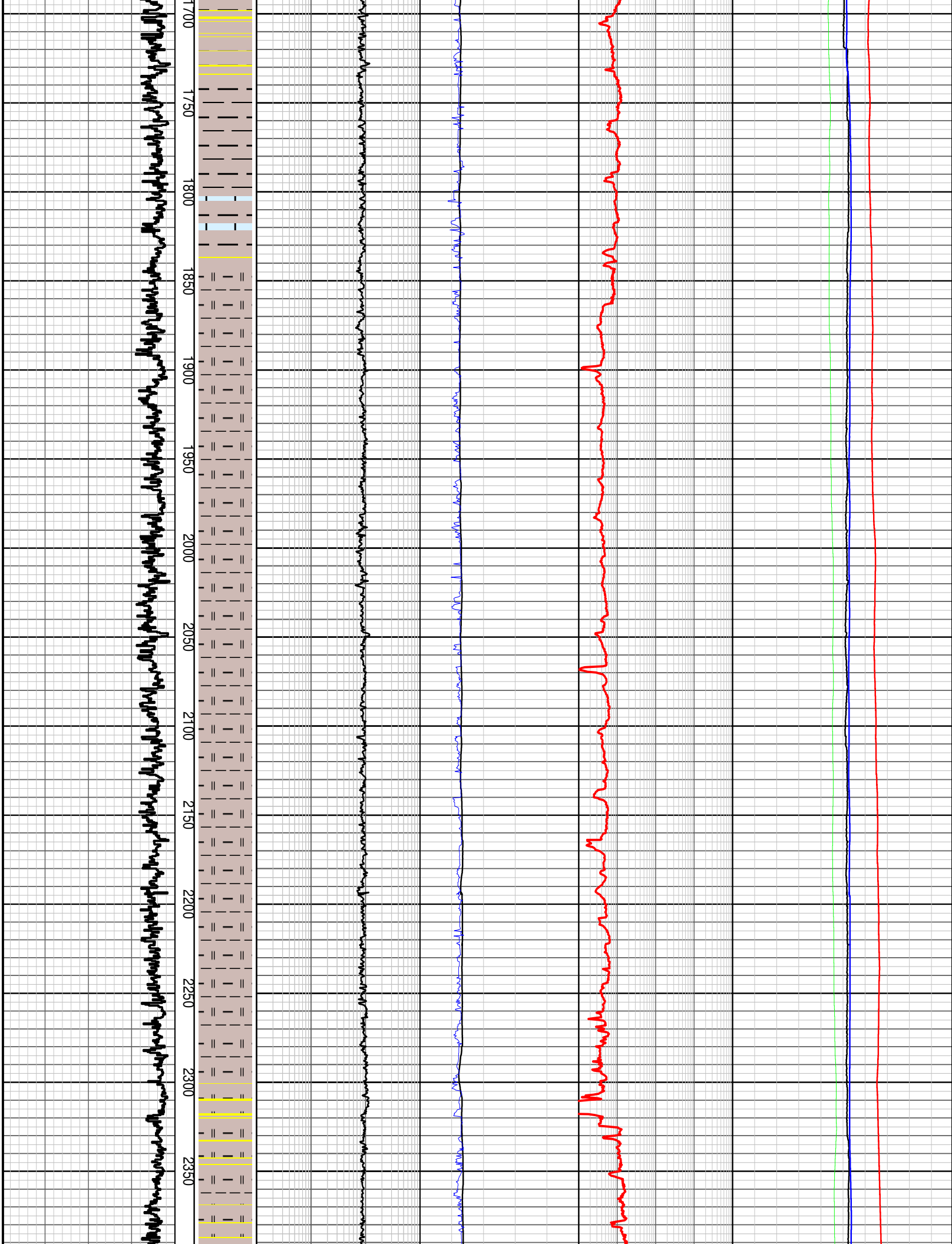


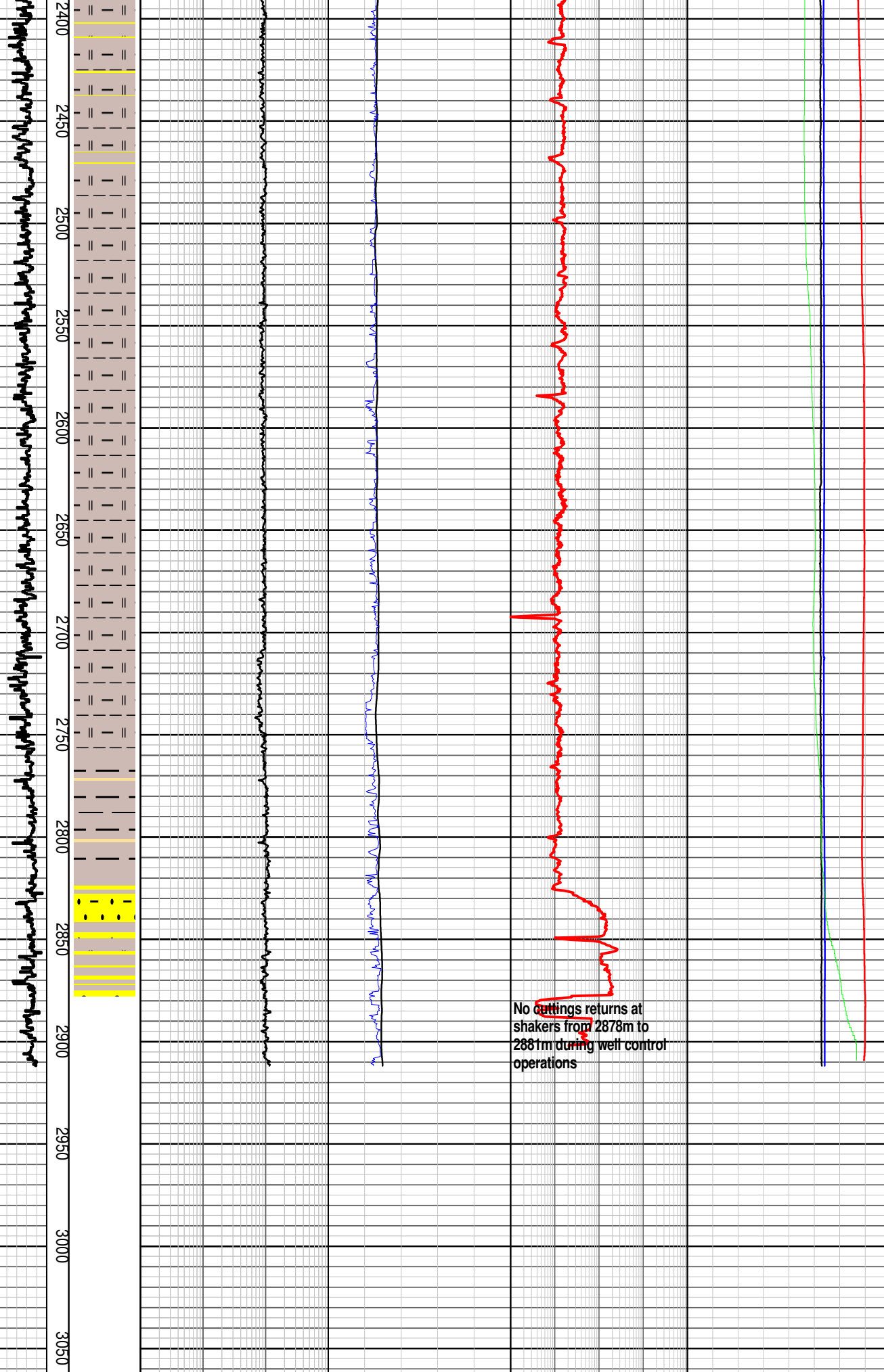
INTEQ

### PRESSURE PLOT









3100

### PRESSURE PLOT

<p>ROP (m/hr)</p> <p>400   300   200   100</p>	<p>TVD meters 1:2500</p> <p>INTERPRETED LITHOLOGY</p>	<p>DXC</p> <p>0.1   1   10</p>	<p>Temp In (degC)</p> <p>20   40   60   80   100</p> <p>Temp Out (degC)</p> <p>20   40   60   80   100</p>	<p>- Trip Gas</p> <p>- Connection Gas</p> <p>Total Gas (%)</p> <p>0.1   1   10   100</p>	<p>*FIT/LOT</p> <p>Mud Weight In (sg)</p> <p>0.5   1   1.5   2   2.5</p> <p>ECD (sg)</p> <p>0.5   1   1.5   2   2.5</p> <p>Estimated Fracture Pressure (sg)</p> <p>0.5   1   1.5   2   2.5</p> <p>Estimated Pore Pressure (sg)</p> <p>0.5   1   1.5   2   2.5</p>
--	---	--------------------------------	--	--	---