

30
40
50
60
70
80
90
100
110
120
130
140
150

30-11-2009

BIT # 1: 914mm (36")
HUGHES CR-1
JETS: N/A
IN:100.3m OUT:158m
RUN:57.7m HRS:2.8
COND: 1-1-WT-A-1-I-NO-TD

01-12-2009

WOB: 2-5 klbs
RPM: 80
GPM: 800
SPP: 145-665 psi

SPUD ROCKHOPPER-1 @ 23:30
914mm (36") SECTION
ON THE 30TH NOV 2009

SEABED @ 100.3m

SURVEY @ 100.30m
Incl: 0.00° AZI: 0.0°
TVD: 100.3m

DRILL WITH SEA WATER
AND GEL SWEEPS

RETURNS TO SEABED

914mm (36") SECTION TD
@ 158m MDRT @ 0700hrs ON
01st DEC 2009

762mm(30") CONDUCTOR

02-12-2009

160

170

180

190

200

210

220

230

240

250

260

270

280

BIT # 2: 445mm (17.5")
SMITH MILL TOOTH XR+VCPS
JETS: 1x13, 3x22
IN:158m OUT:966m
RUN:808m HRS:30.2
COND:1-1-WT-A-E-I-NO-TD

WOB: 2-4 klbs
RPM: 75-80
GPM: 990-1010
SPP: 1450-1700 psi

@ 158m

DRILL AHEAD 445mm(17.5")
HOLE SECTION FROM 158mMDRT
@ 1800 hrs ON 02nd DEC 2009

DRILL WITH SEA WATER
AND GEL SWEEPS

SURVEY @ 242.36m
Incl: 0.22° AZI: 278.1°
TVD: 242.36m

290

300

310

320

330

340

350

360

370

380

390

400

410

03-12-2009

WOB: 2-6 klbs
RPM: 75-85
GPM: 990-1010
SPP: 1600-1750 psi

RETURNS TO SEA BED

SURVEY @ 327.42m
Incl: 0.34° AZI: 318.42°
TVD: 327.42m

SURVEY @ 356.38m
Incl: 0.16° AZI: 310.14
TVD: 356.38m

DRILL WITH SEA WATER
AND GEL SWEEPS

420
430
440
450
460
470
480
490
500
510
520
530
540

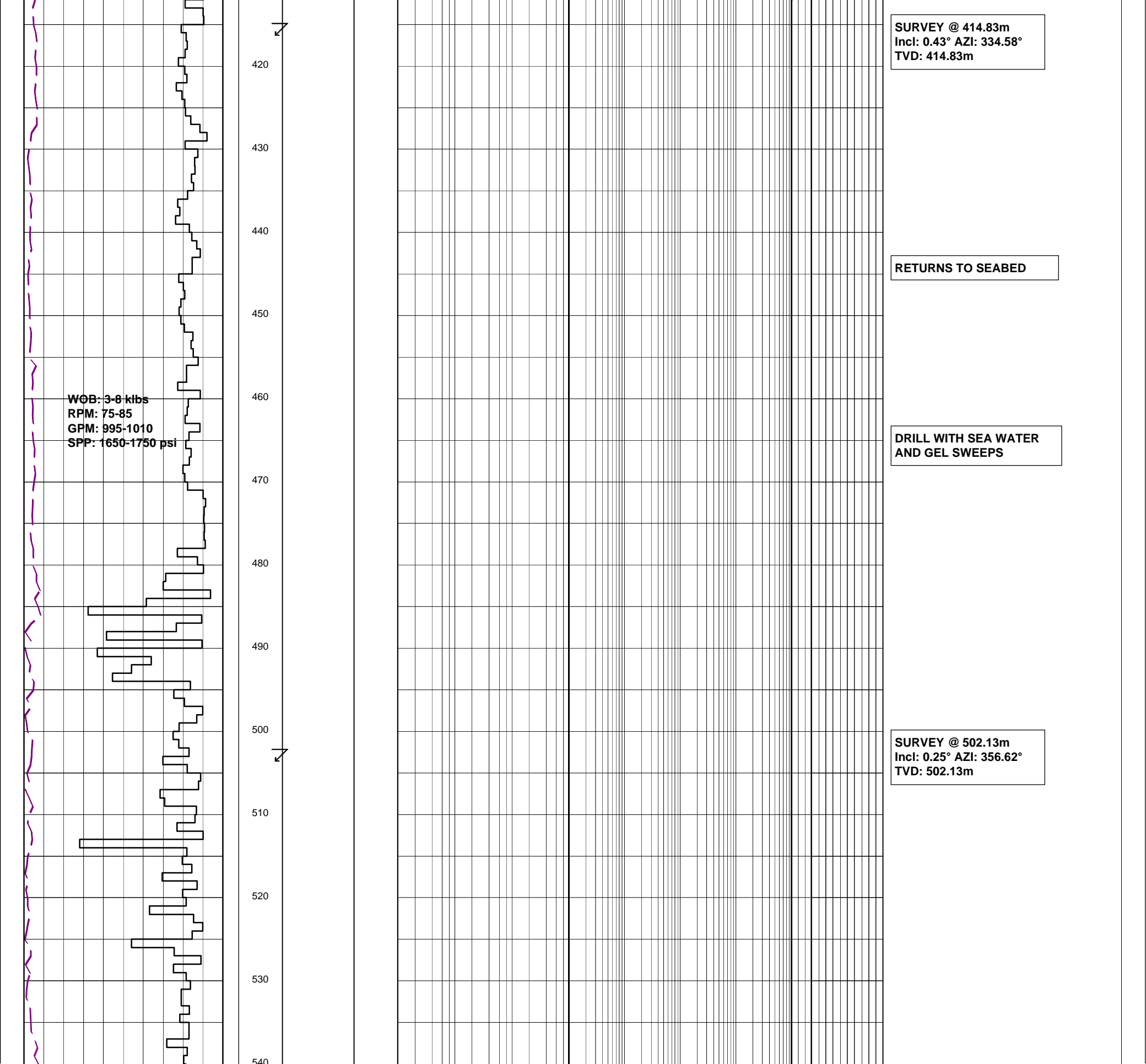
WOB: 3-8 klbs
RPM: 75-85
GPM: 995-1010
SPP: 1650-1750 psi

SURVEY @ 414.83m
Incl: 0.43° AZI: 334.58°
TVD: 414.83m

RETURNS TO SEABED

DRILL WITH SEA WATER
AND GEL SWEEPS

SURVEY @ 502.13m
Incl: 0.25° AZI: 356.62°
TVD: 502.13m



540
550
560
570
580
590
600
610
620
630
640
650
660

WOB: 3-6 klbs
RPM: 70-80
GPM: 1000-1020
SPP: 1730-1820 psi

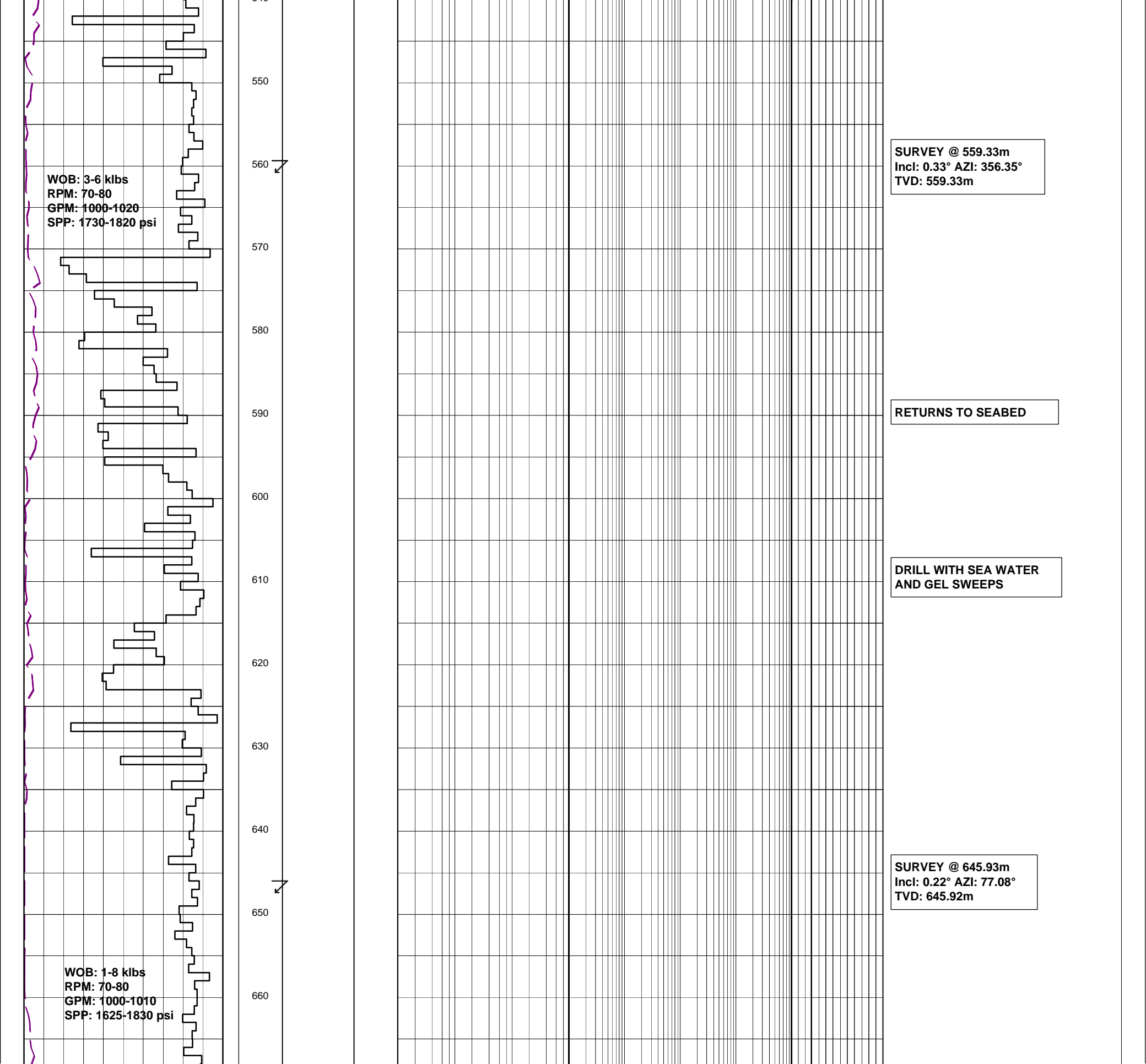
WOB: 1-8 klbs
RPM: 70-80
GPM: 1000-1010
SPP: 1625-1830 psi

SURVEY @ 559.33m
Incl: 0.33° AZI: 356.35°
TVD: 559.33m

RETURNS TO SEABED

**DRILL WITH SEA WATER
AND GEL SWEEPS**

SURVEY @ 645.93m
Incl: 0.22° AZI: 77.08°
TVD: 645.92m



670
680
690
700
710
720
730
740
750
760
770
780
790

WOB: 3-10 klbs
RPM: 65-80
GPM: 1000-1010
SPP: 1800-1950 psi

RETURNS TO SEABED

**DRILL WITH SEA WATER
AND GEL SWEEPS**

SURVEY @ 733.40m
Incl: 0.10° AZI: 264.51°
TVD: 733.39m



800
810
820
830
840
850
860
870
880
890
900
910
920

WOB: 2-12 klbs
RPM: 70-85
GPM: 1000-1020
SPP: 1900-1990 psi

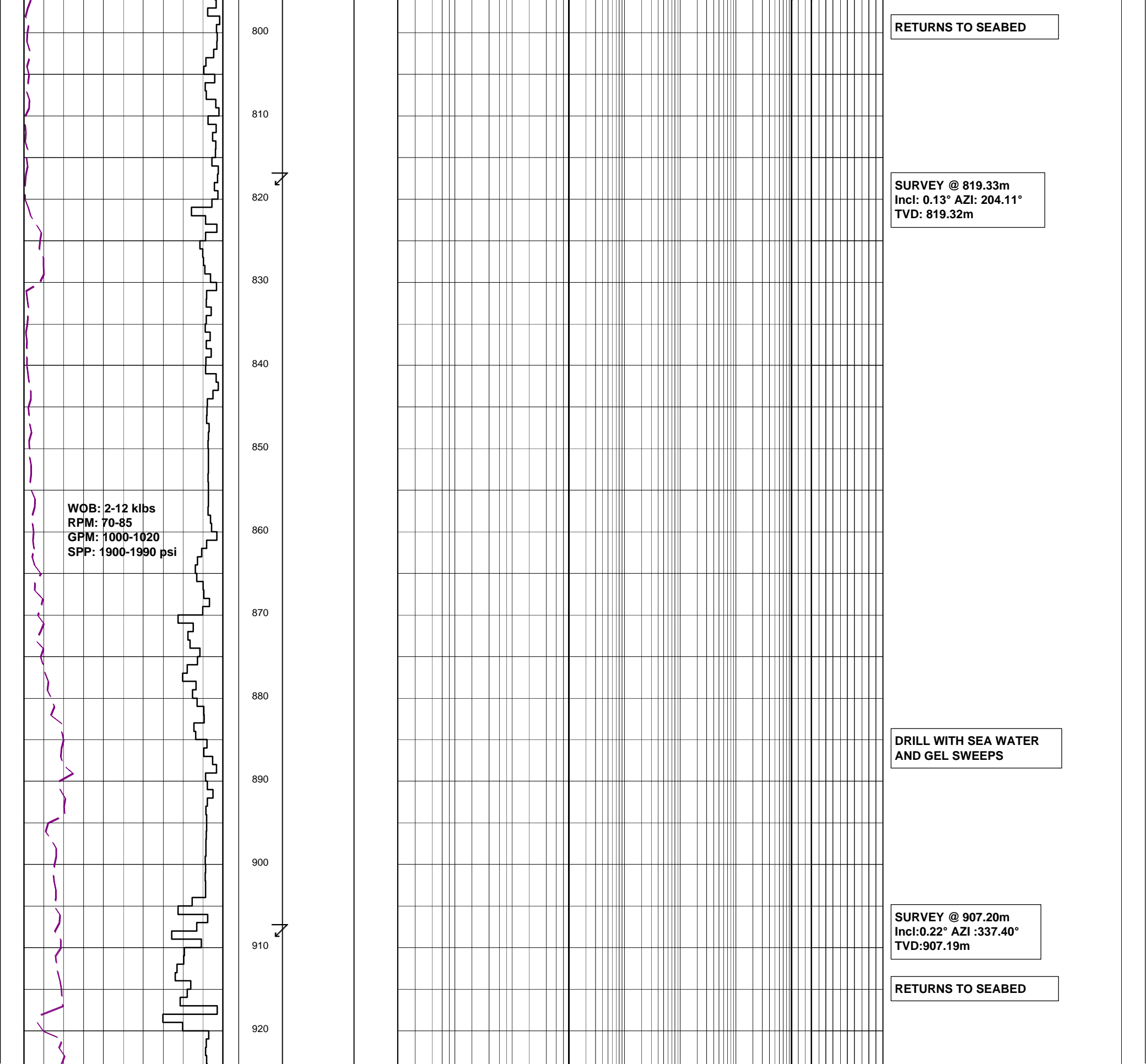
RETURNS TO SEABED

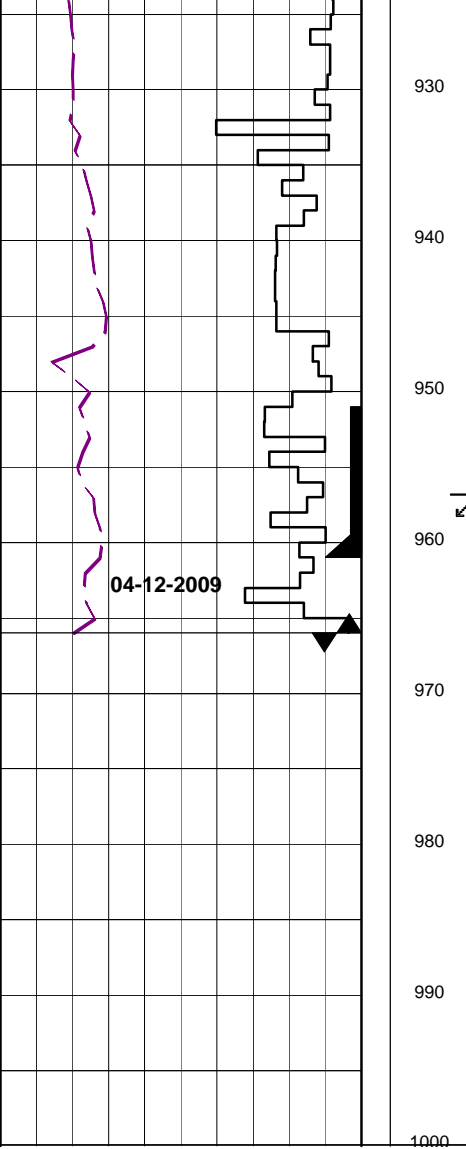
SURVEY @ 819.33m
Incl: 0.13° AZI: 204.11°
TVD: 819.32m

DRILL WITH SEA WATER
AND GEL SWEEPS

SURVEY @ 907.20m
Incl: 0.22° AZI :337.40°
TVD: 907.19m

RETURNS TO SEABED





SURVEY @ 956.77m
Incl:0.15° AZI :112.45°
TVD:956.76m

340mm (13.375") CASING SHOE
SET @ 961m MDRT

445mm (17.5") SECTION TD
@ 966m MDRT @ 0900hrs ON
04th DECEMBER 2009