

Elver-1_EcoScope_GeoVISION Service RM 200MD

Format: 8.5_RM_200MD_1 Vertical Scale: 1:200 Graphics File Created: 12-Jan-2009 22:19

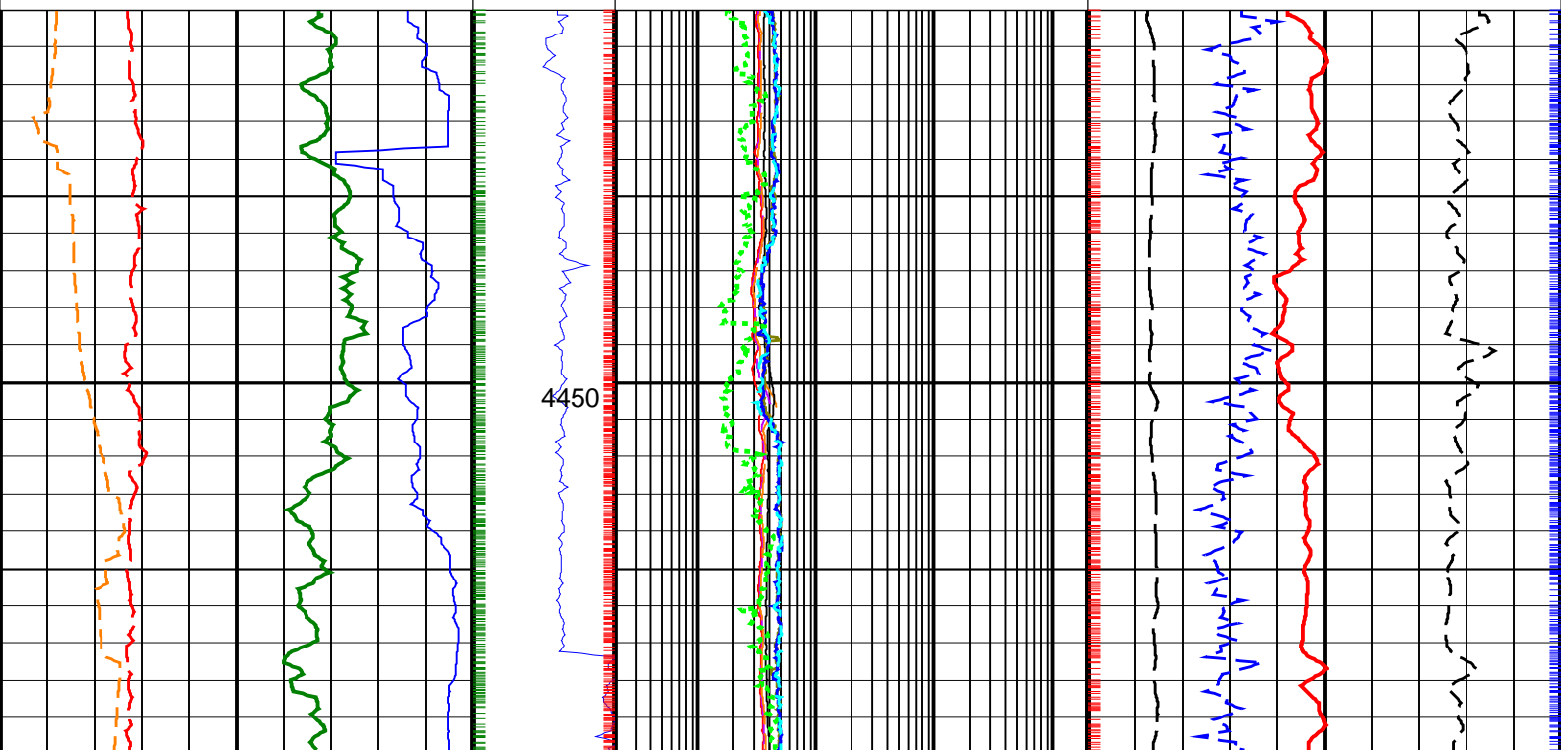
PIP SUMMARY

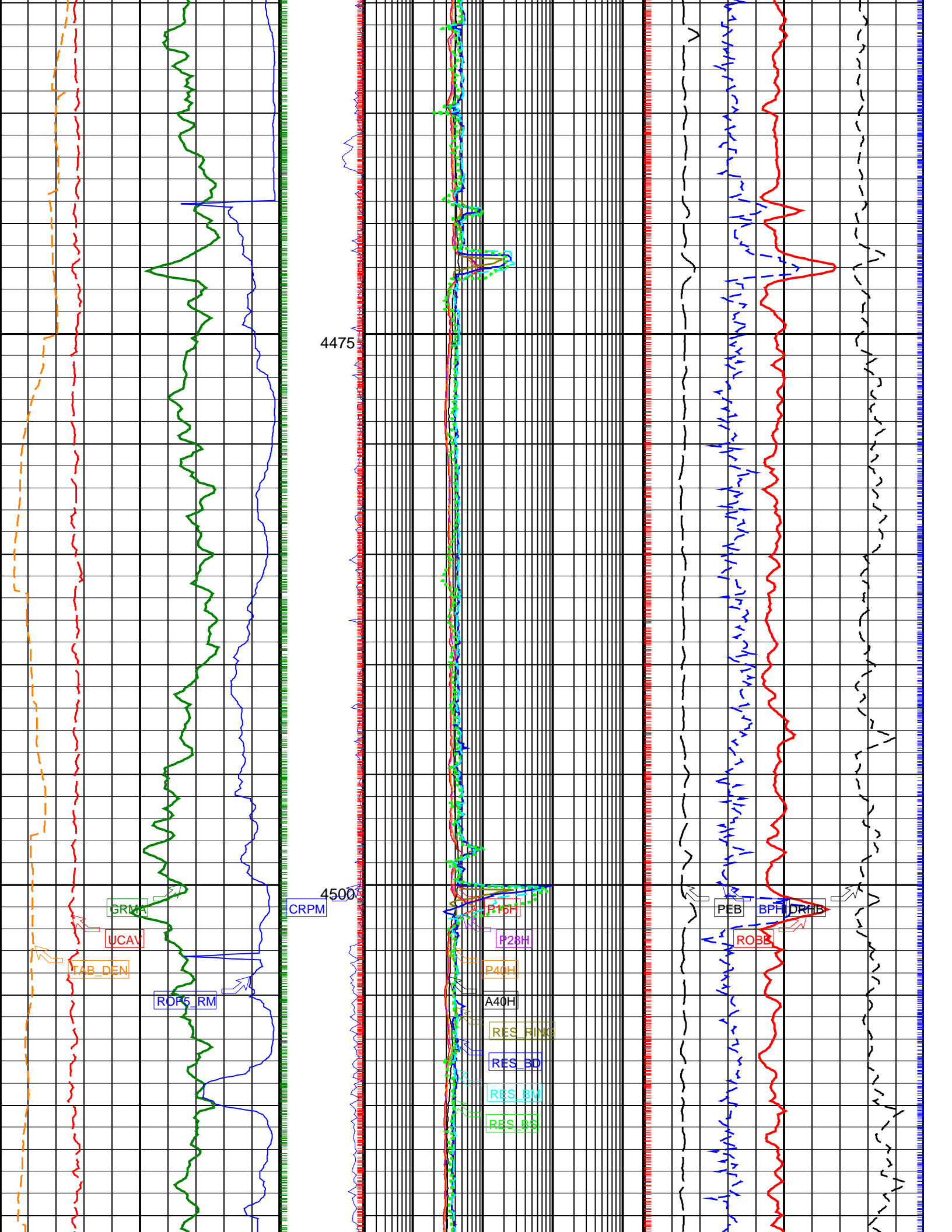
- ┆ Gamma Ray Samples
- ┆ Resistivity Samples

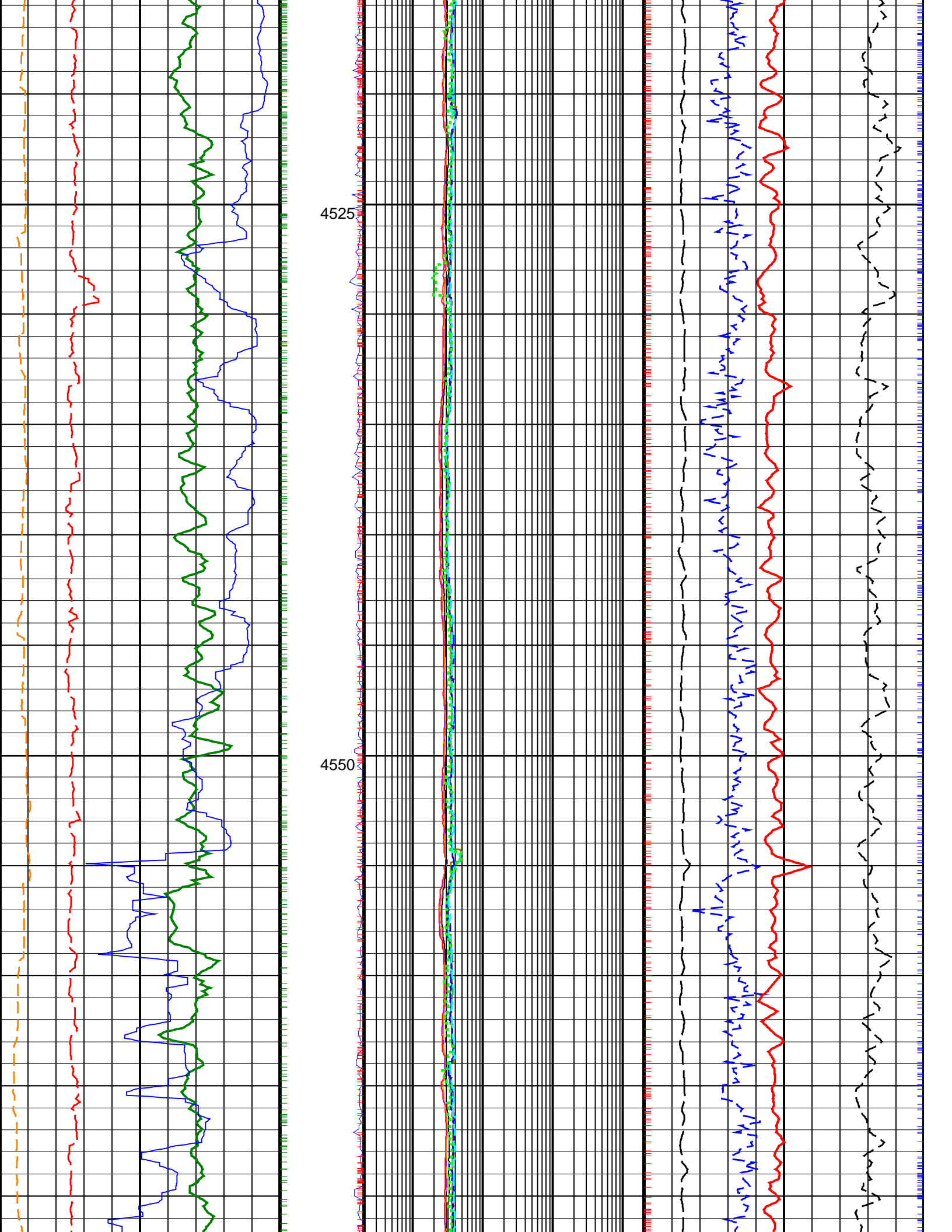
Density Ticks, 0.1 ft ┆

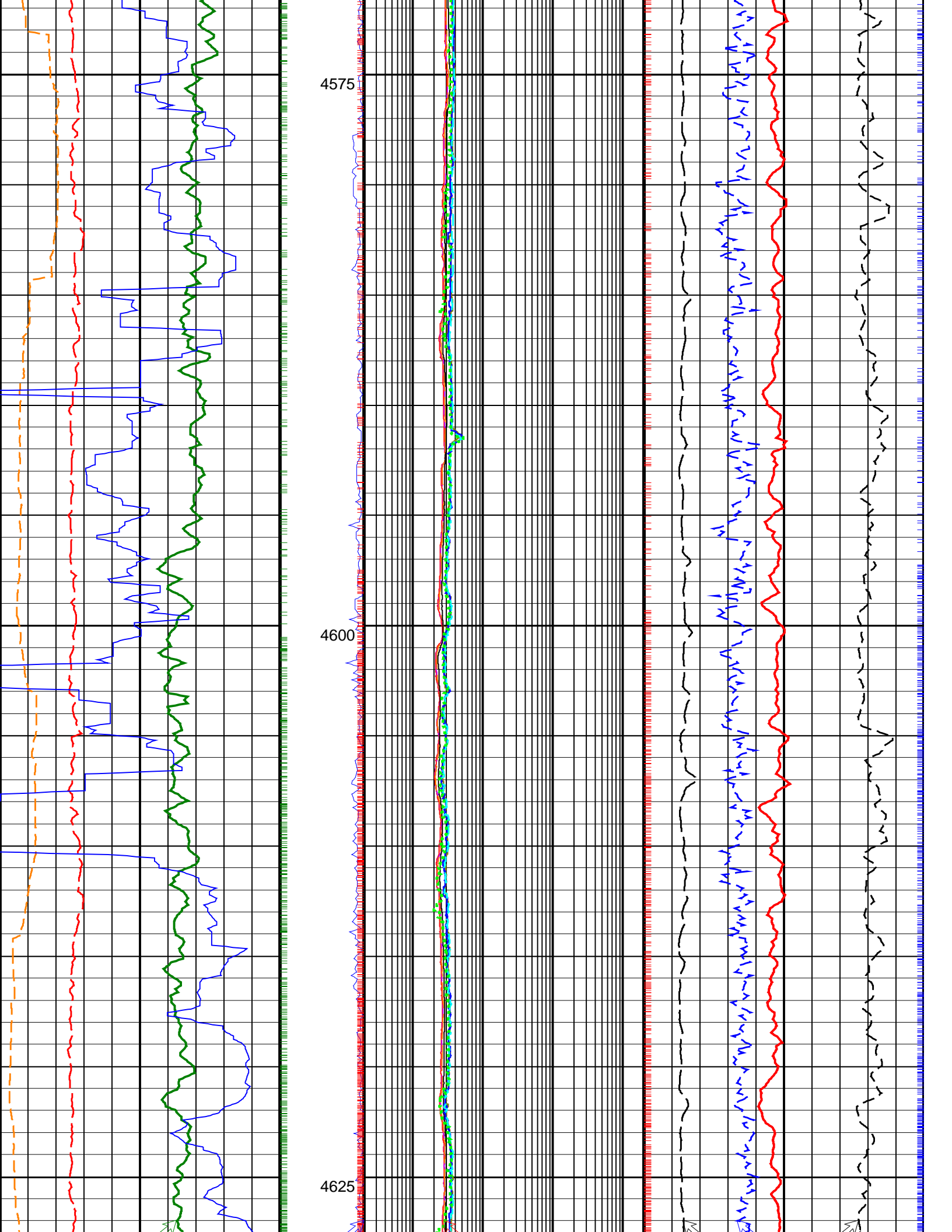
Neutron Ticks, 0.1 ft ┆

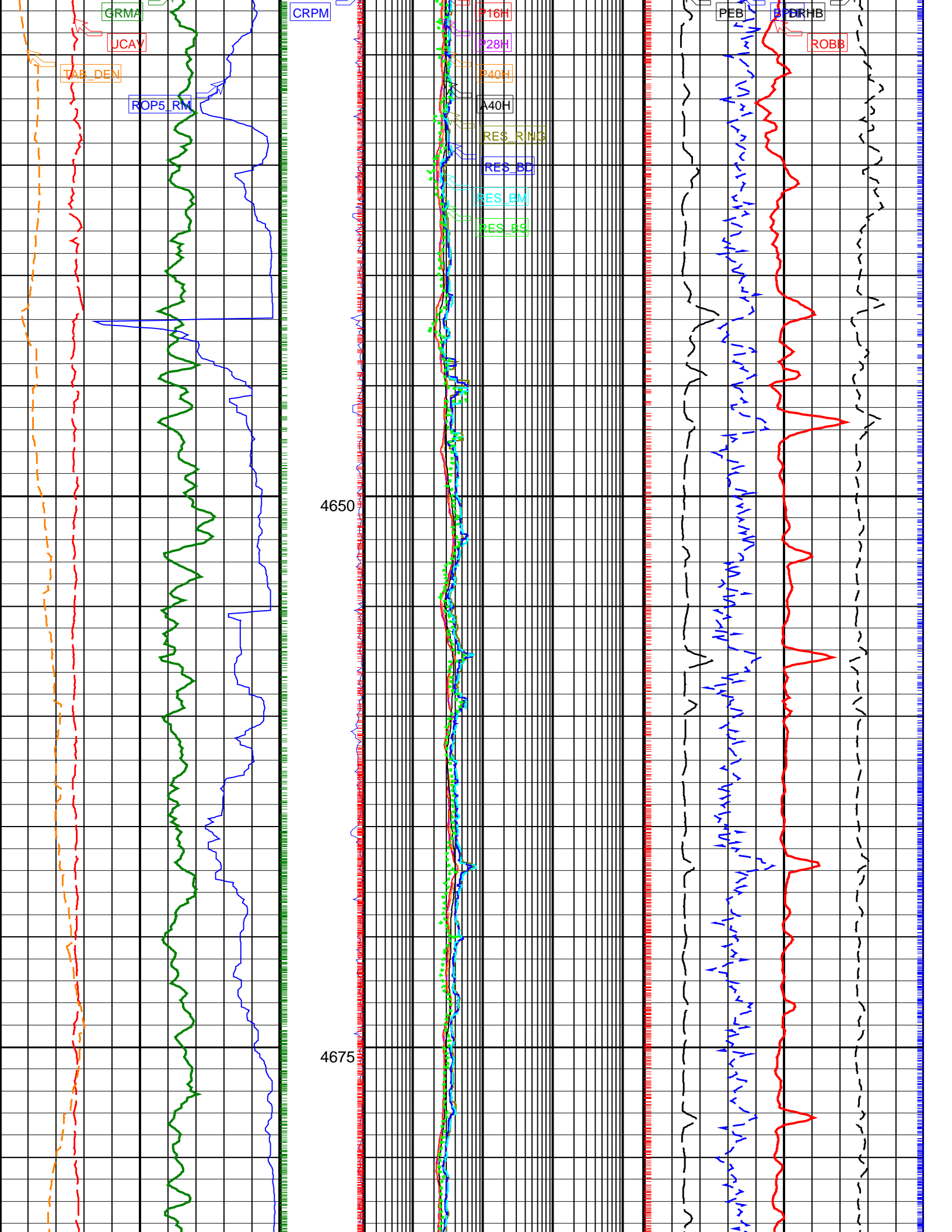
	ARC Attenuation Resistivity 40 inch at 2 MHz (A40H) 0.2 (OHMM) 2000		
	Medium Button Resistivity (RES_BM) 0.2 (OHMM) 2000		
	Deep Button Resistivity (RES_BD) 0.2 (OHMM) 2000		
	Ring Resistivity (RES_RING) 0.2 (OHMM) 2000		
Time after BIT (between drilling and measurement) (TAB_DEN) 0 (HR) 10	ARC Phase Shift Resistivity 40 inch at 2 MHz (P40H) 0.2 (OHMM) 2000		
Rate of Penetration, Averaged over Last 5ft (ROP5_RM) 200 (M/HR) 0	ARC Phase Shift Resistivity 28 inch at 2 MHz (P28H) 0.2 (OHMM) 2000	Photoelectric Factor, Bottom (PEB) 0 (----) 10	Bulk Density Correction, Bottom (DRHB) -0.25 (G/C3) 0.25
Gamma Ray, Average (GRMA) 0 (GAPI) 200	Shallow Button Resistivity (RES_BS) 0.2 (OHMM) 2000	Bulk Density, Bottom (ROBB) 1.95 (G/C3) 2.95	
Ultrasonic Caliper Average (UCAV) 6 (IN) 16	Collar Rotational Speed (CRPM) (RPM) 0 200	ARC Phase Shift Resistivity 16 inch at 2 MHz (P16H) 0.2 (OHMM) 2000	Best Thermal Neutron Porosity, Average (BPHI) 0.45 (V/V) -0.15

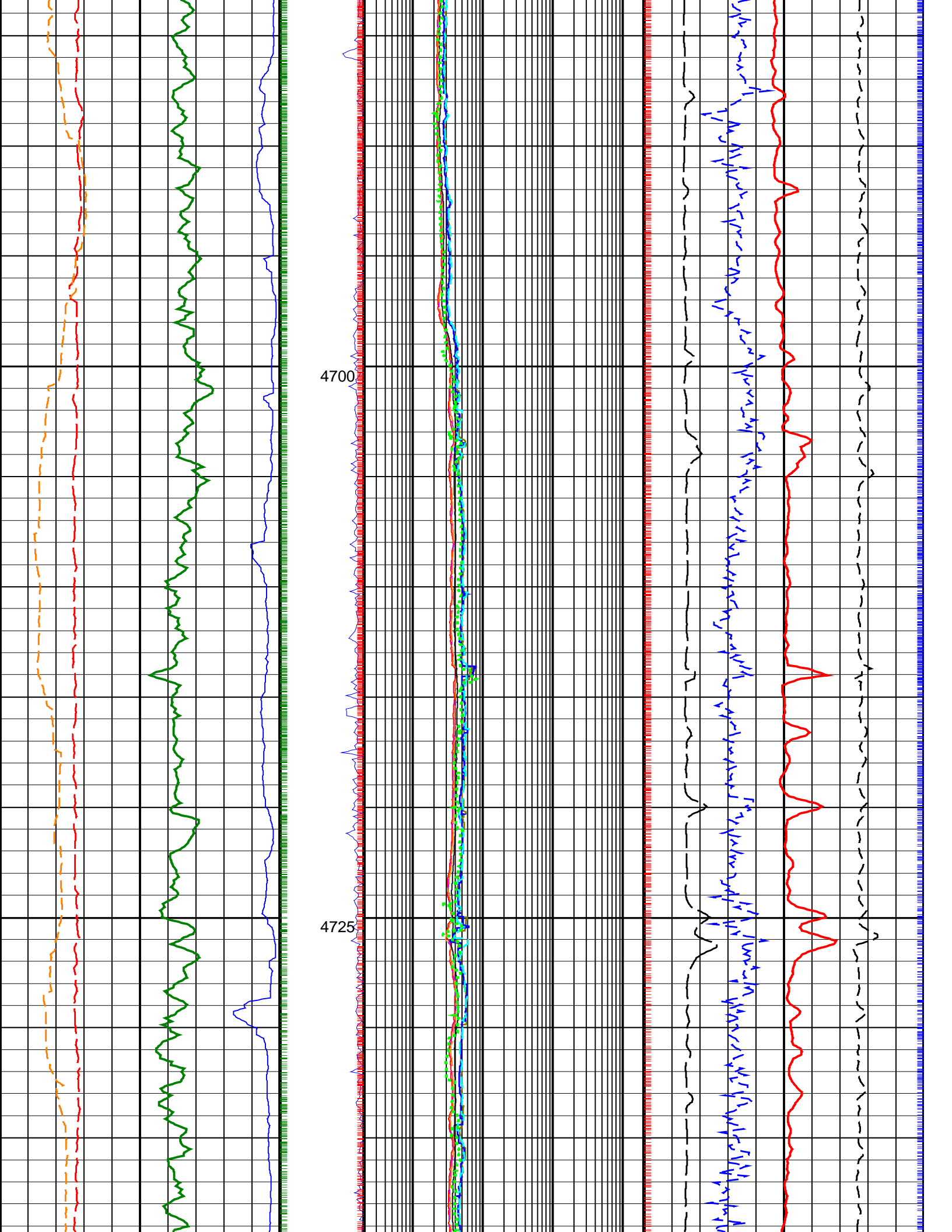


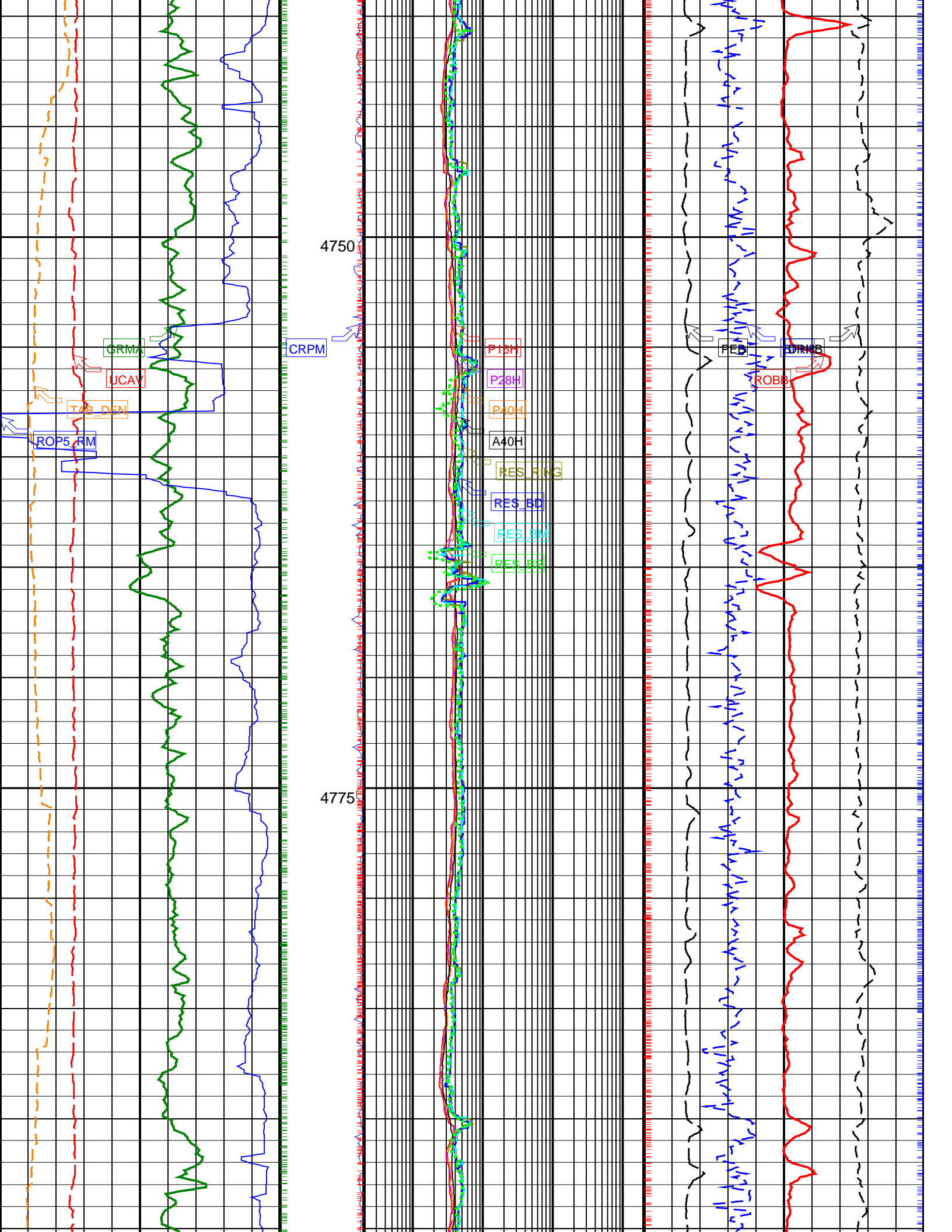


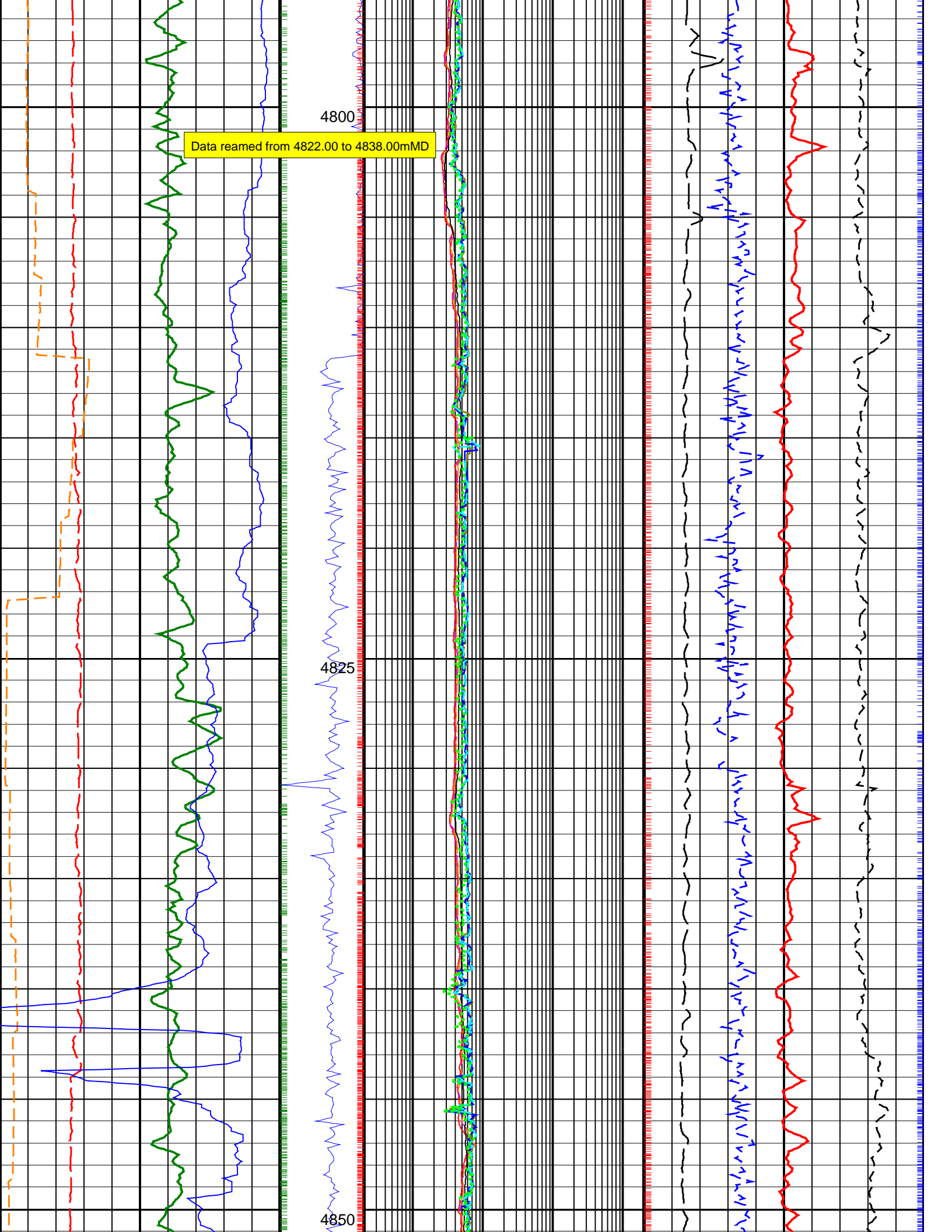










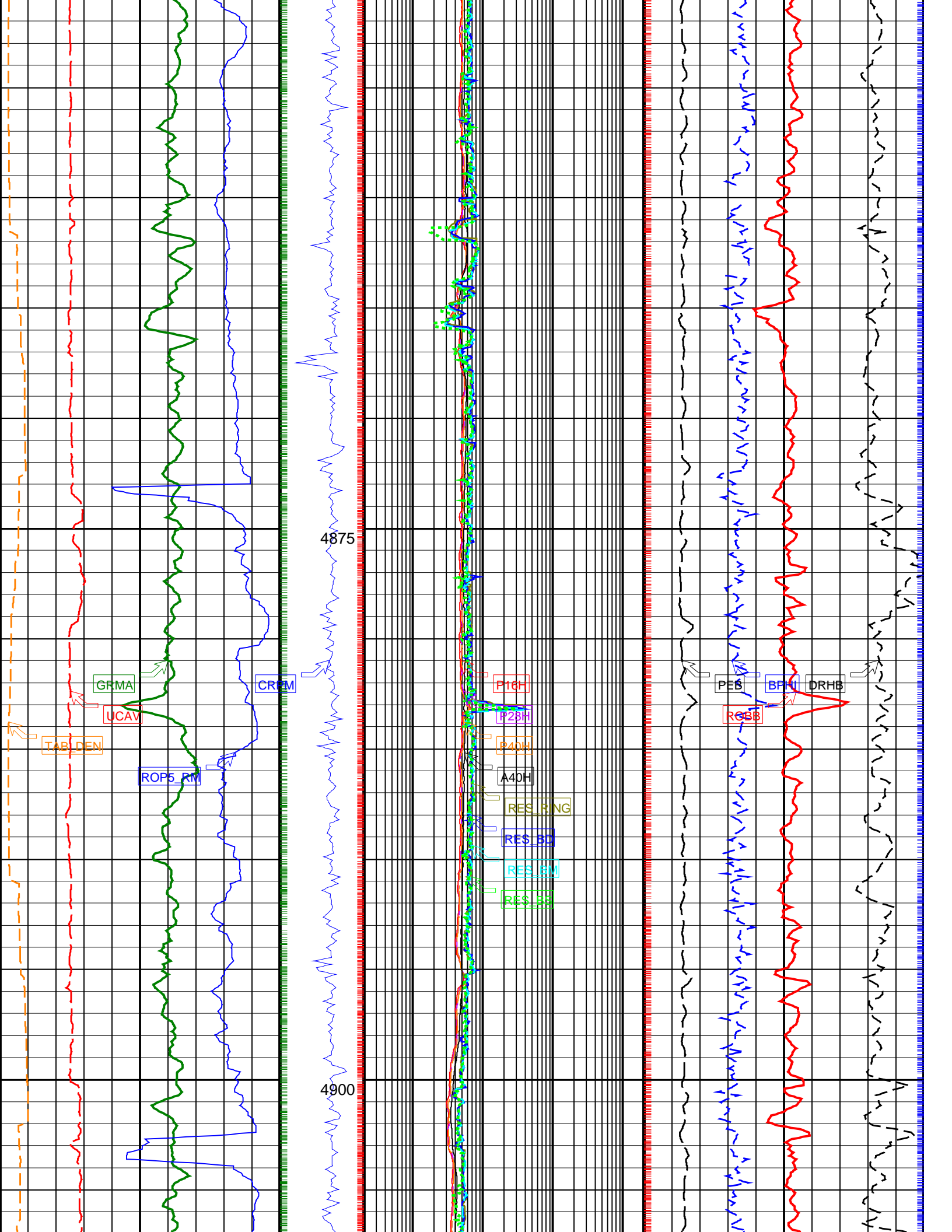


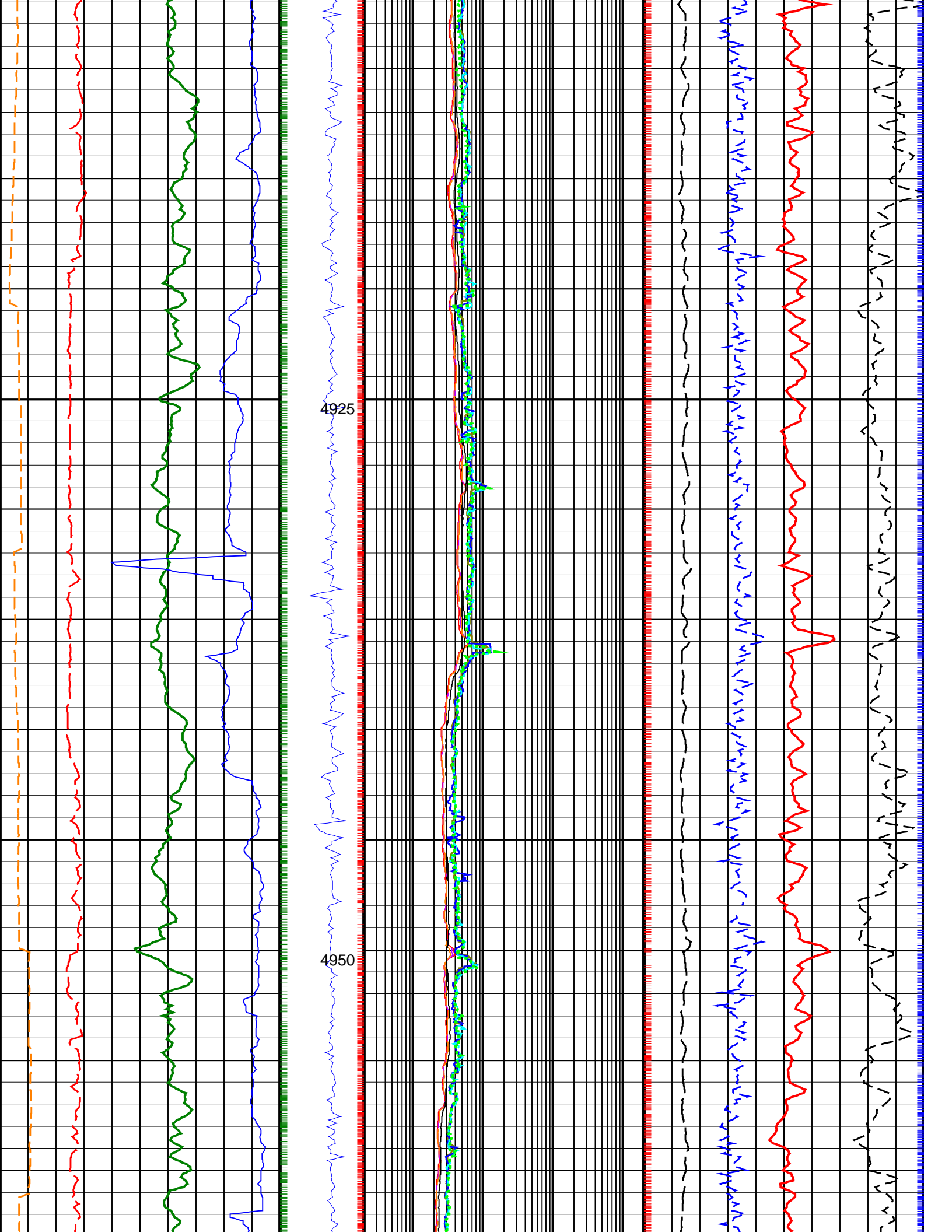
Data reamed from 4822.00 to 4838.00mMD

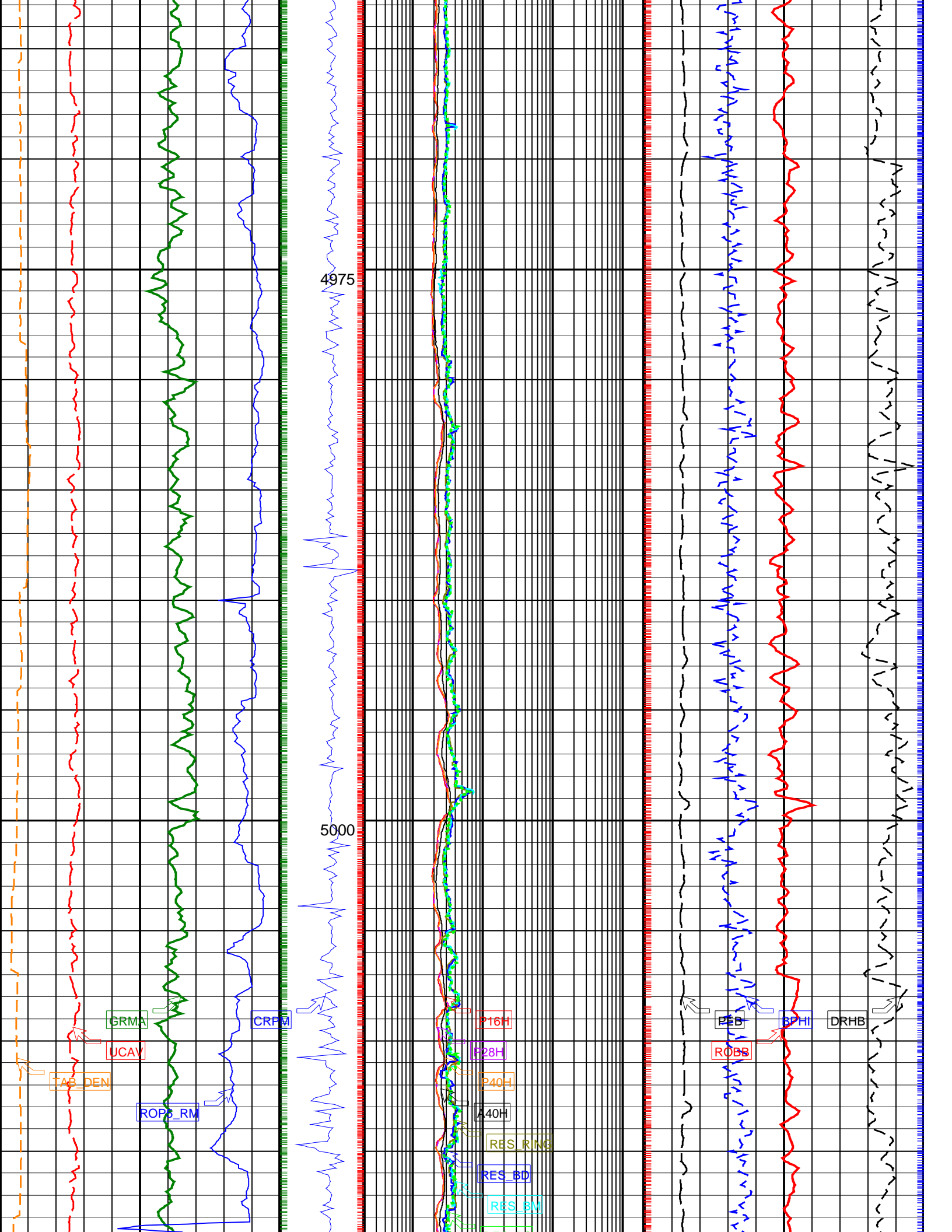
4800

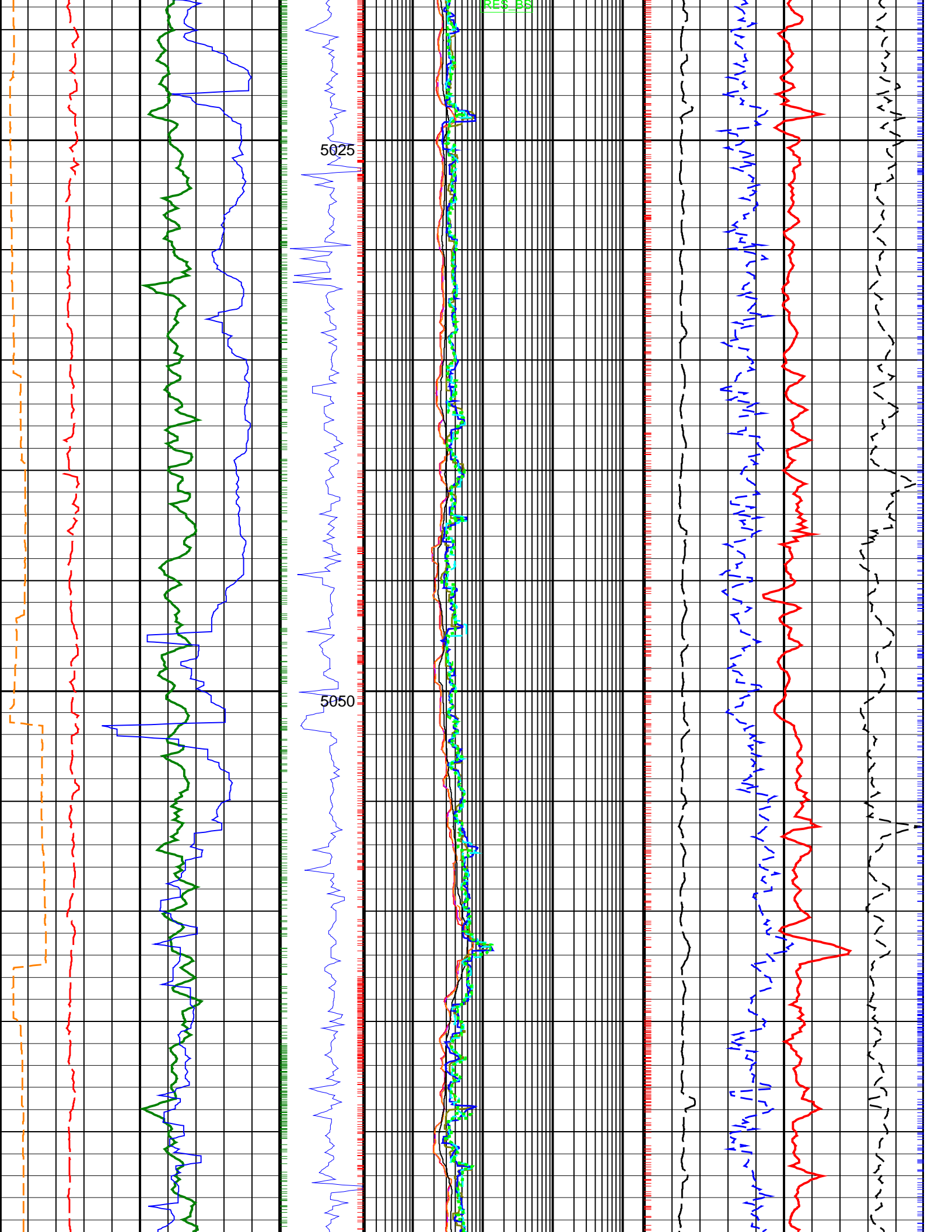
4825

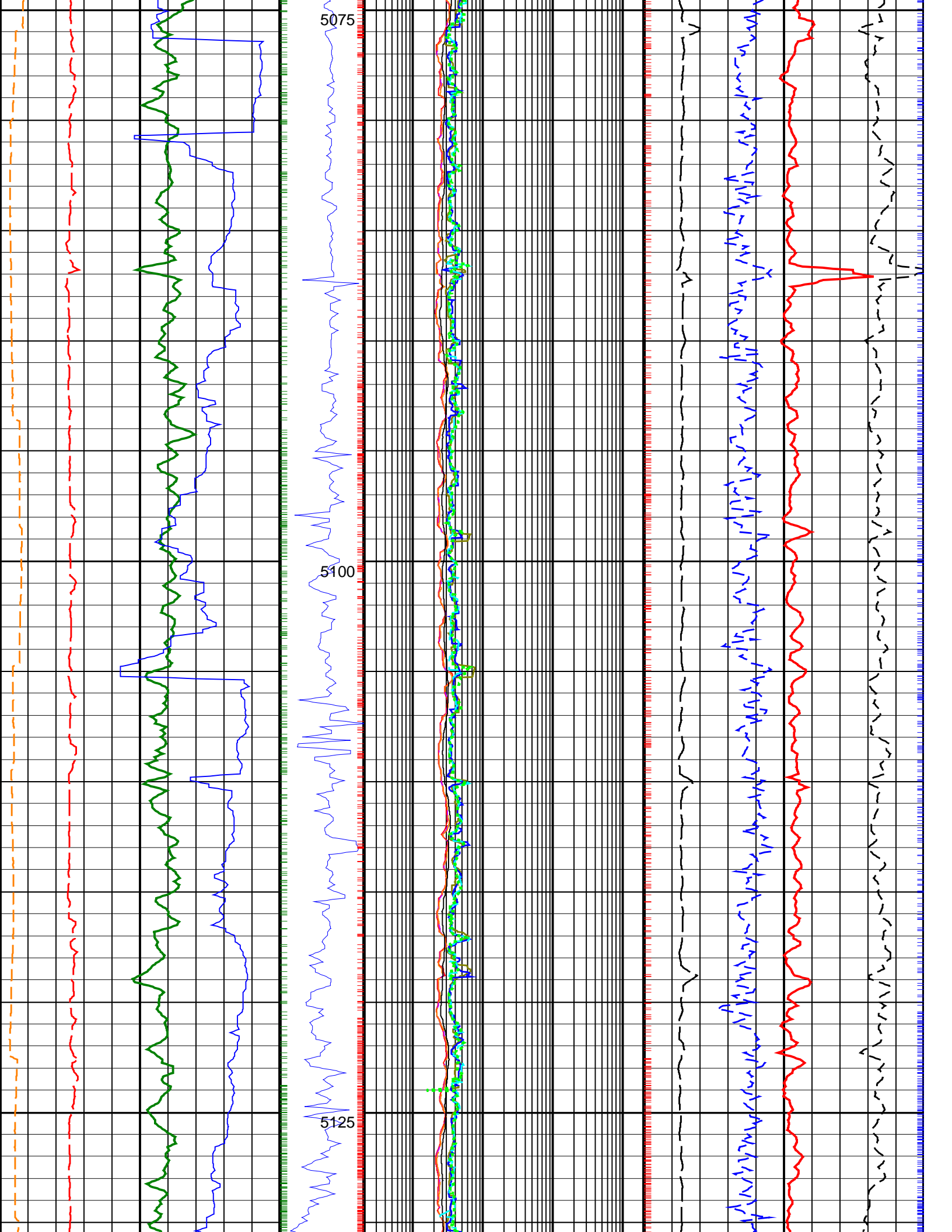
4850

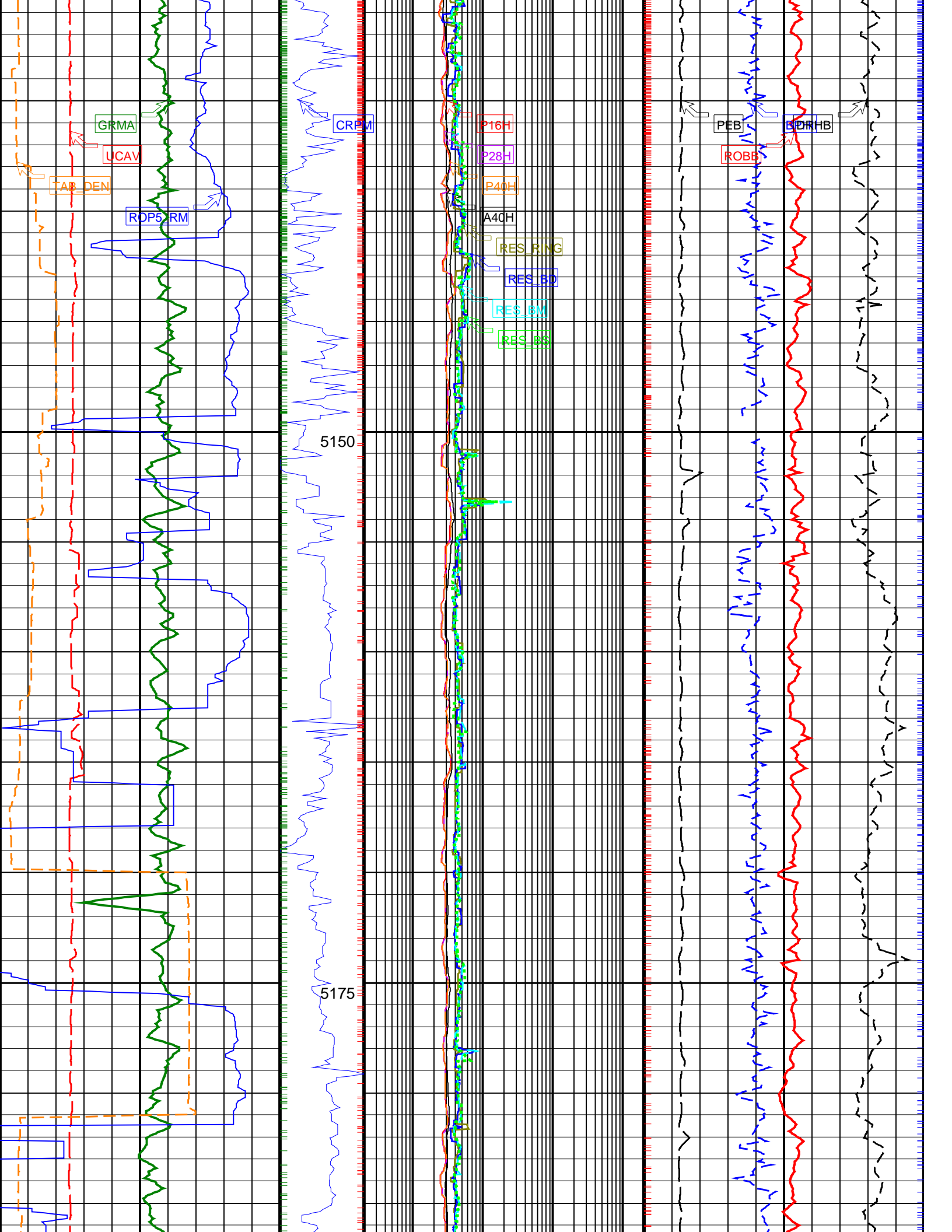


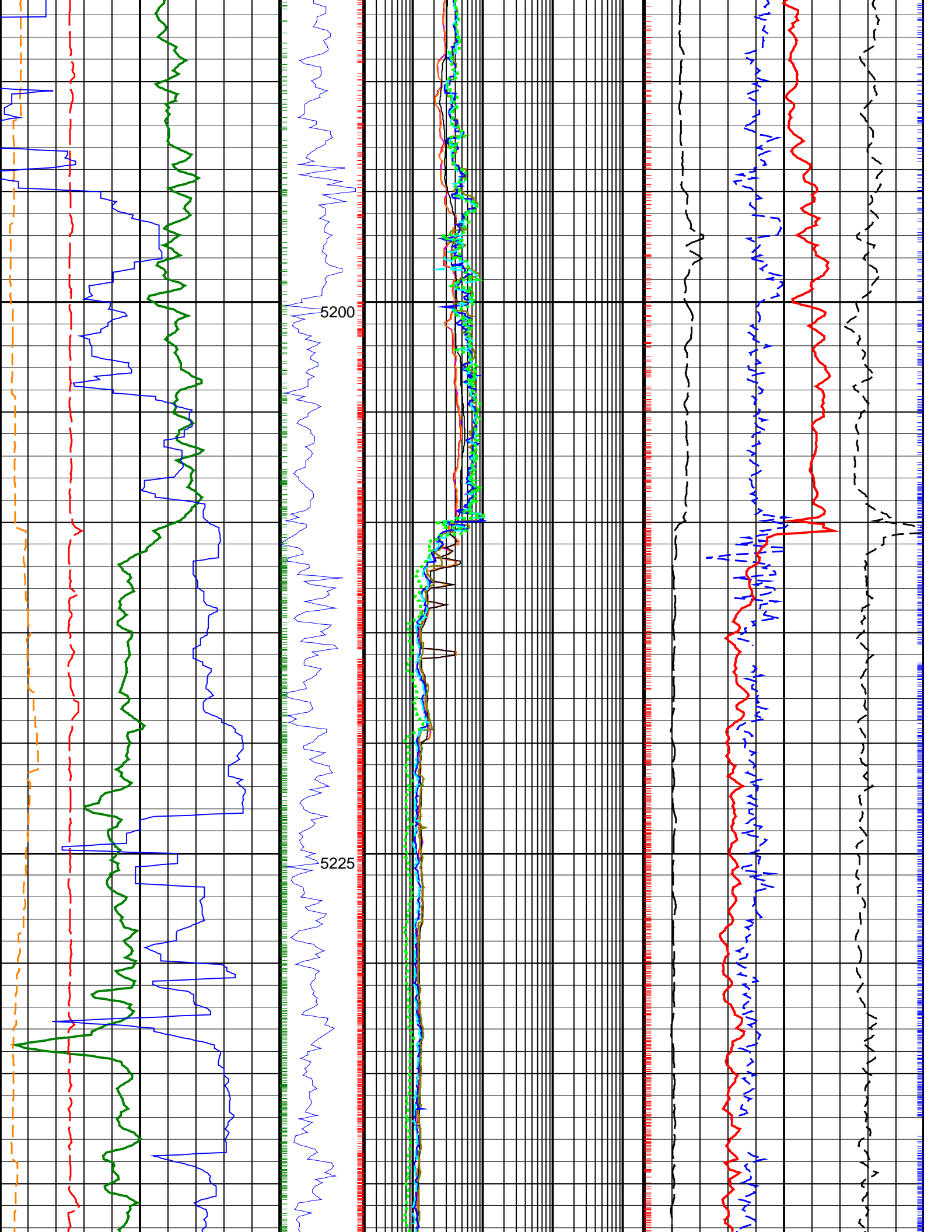


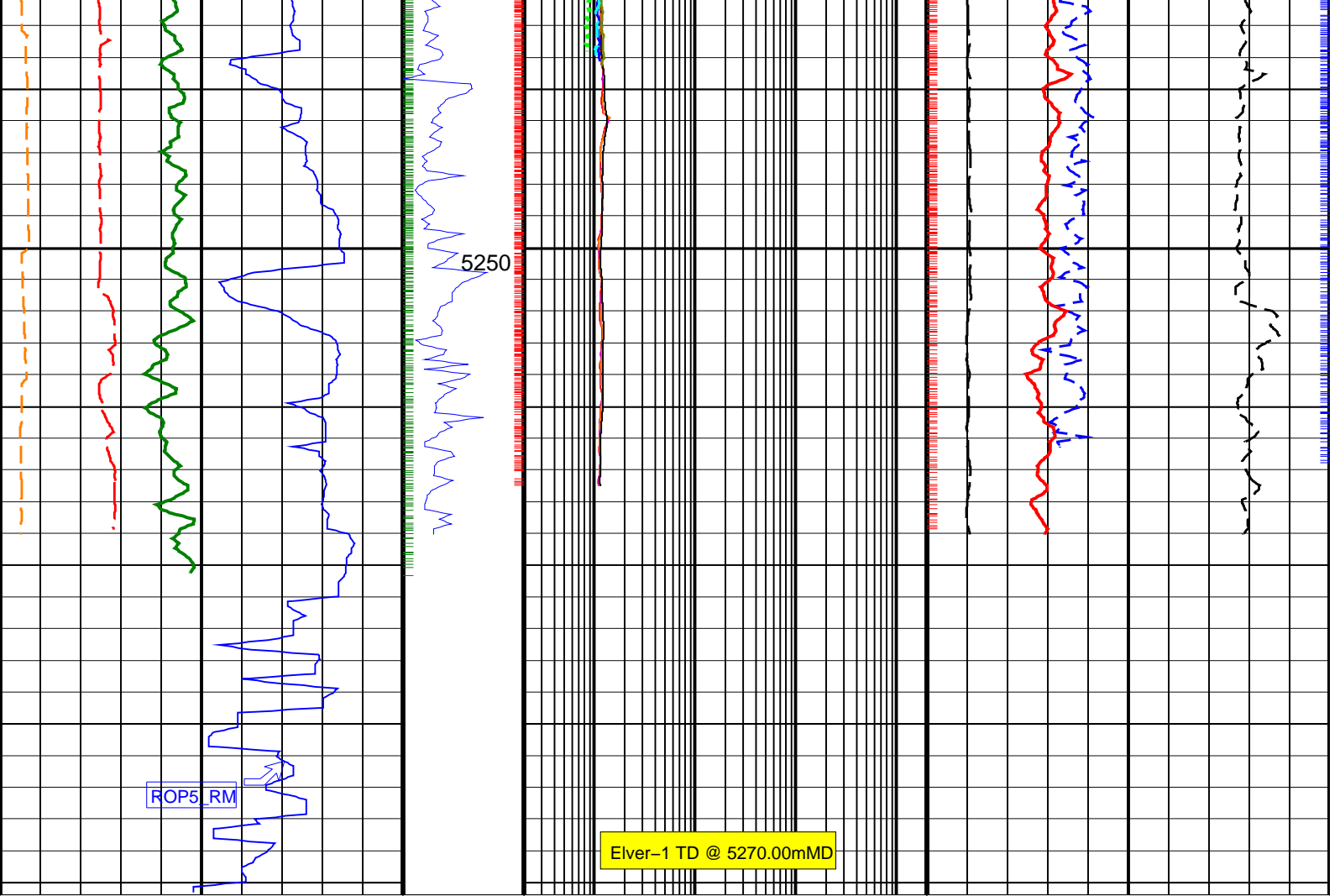












<p>Ultrasonic Caliper Average (UCAV) (IN)</p> <p>6 ————— 16</p>	<p>Collar Rotational Speed (CRPM) (RPM)</p> <p>0 ————— 200</p>	<p>ARC Phase Shift Resistivity 16 inch at 2 MHz (P16H) (OHMM)</p> <p>0.2 ————— 2000</p>	<p>Best Thermal Neutron Porosity, Average (BPHI) (V/V)</p> <p>0.45 ————— -0.15</p>	
<p>Gamma Ray, Average (GRMA) (GAPI)</p> <p>0 ————— 200</p>		<p>Shallow Button Resistivity (RES_BS) (OHMM)</p> <p>0.2 ————— 2000</p>	<p>Bulk Density, Bottom (ROBB) (G/C3)</p> <p>1.95 ————— 2.95</p>	
<p>Rate of Penetration, Averaged over Last 5ft (ROP5_RM) (M/HR)</p> <p>200 ————— 0</p>		<p>ARC Phase Shift Resistivity 28 inch at 2 MHz (P28H) (OHMM)</p> <p>0.2 ————— 2000</p>	<p>Photoelectric Factor, Bottom (PEB) (-----)</p> <p>0 ————— 10</p>	<p>Bulk Density Correction, Bottom (DRHB) (G/C3)</p> <p>-0.25 ————— 0.25</p>
<p>Time after BIT (between drilling and measurement) (TAB_DEN) (HR)</p> <p>0 ————— 10</p>		<p>ARC Phase Shift Resistivity 40 inch at 2 MHz (P40H) (OHMM)</p> <p>0.2 ————— 2000</p>		
		<p>Ring Resistivity (RES_RING) (OHMM)</p> <p>0.2 ————— 2000</p>		
		<p>Deep Button Resistivity (RES_BD) (OHMM)</p> <p>0.2 ————— 2000</p>		
		<p>Medium Button Resistivity (RES_BM) (OHMM)</p> <p>0.2 ————— 2000</p>		
		<p>ARC Attenuation Resistivity 40 inch at 2 MHz (A40H) (OHMM)</p> <p>0.2 ————— 2000</p>		

PIP SUMMARY

- + Gamma Ray Samples
- + Resistivity Samples

Density Tick: 0.1 ft

