

BestDT* SonicVision Processing

Run 3 : 1705m - 3220m (1/500)

* A Mark of Schlumberger

Using the following logs: sonicVision

COMPANY: Apache Energy Ltd.
WELL: Elver-1
FIELD: VIC-PS9
RIG: Ocean Patriot
STATE: VIC
COUNTRY: Australia
Date Logged: 30-Dec-2008 Date Processed: 31-Dec-2008

FOLD HERE The well name, location and borehole reference data were furnished by the customer.

All interpretations are opinions based on inferences from electrical or other measurements and we cannot, and do not guarantee the accuracy or correctness of any interpretation, and we shall not, except in the case of gross or willful negligence on our part, be liable or responsible for any loss, costs, damages or expenses incurred or sustained by anyone resulting from any interpretations made by any of our officers, agents or employees. These interpretations are also subject to Clause 4 of our General Terms and Conditions as set out in our current Price Schedule.

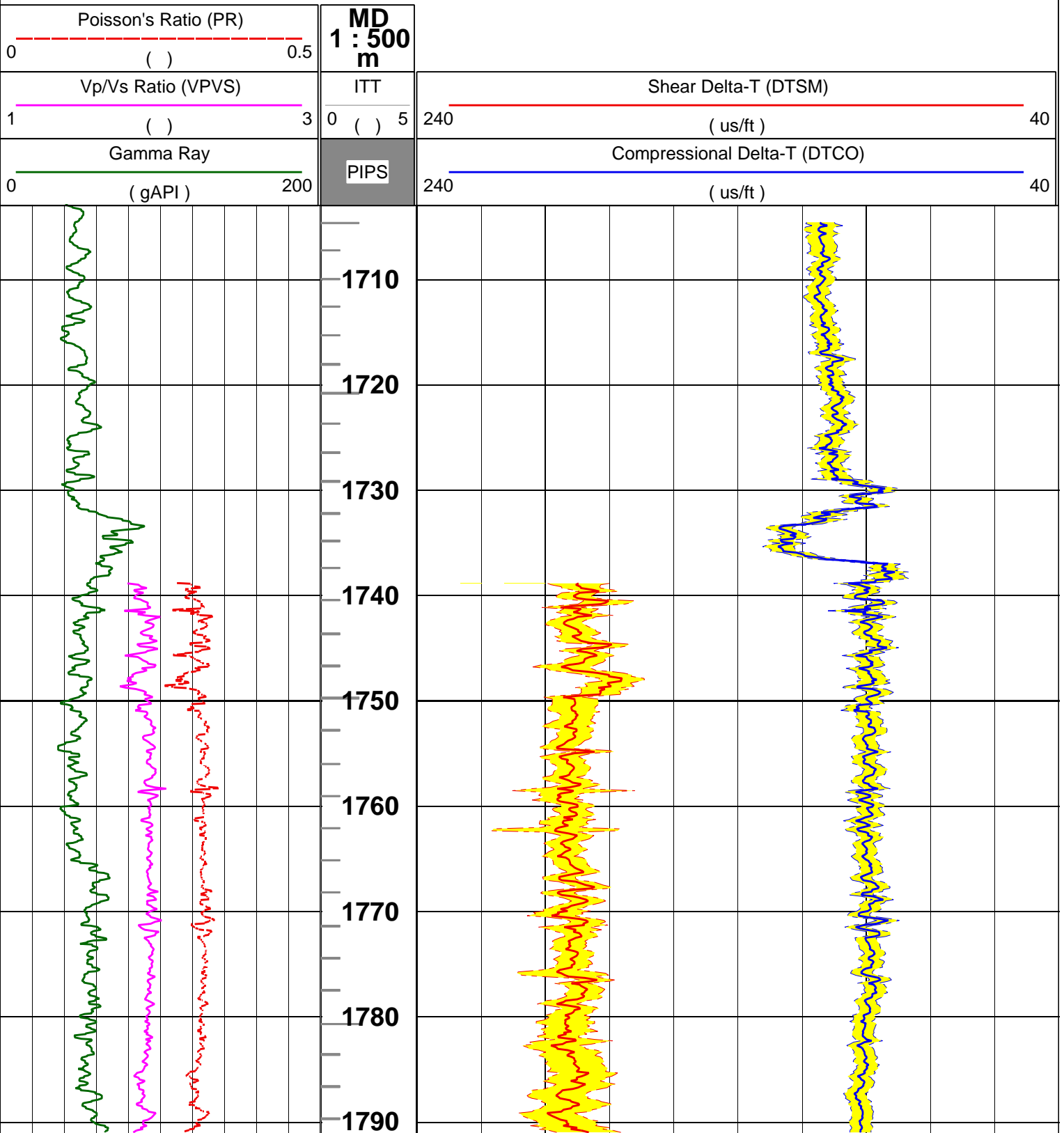
Field Recording:	Location:	Software Version: 13X0-101	Engineer: Oldridge/Calthrop
Office Recording:	ICS Center: Melbourne	Baseline: GF 4.4 DC3	Log Analyst: A. Datey

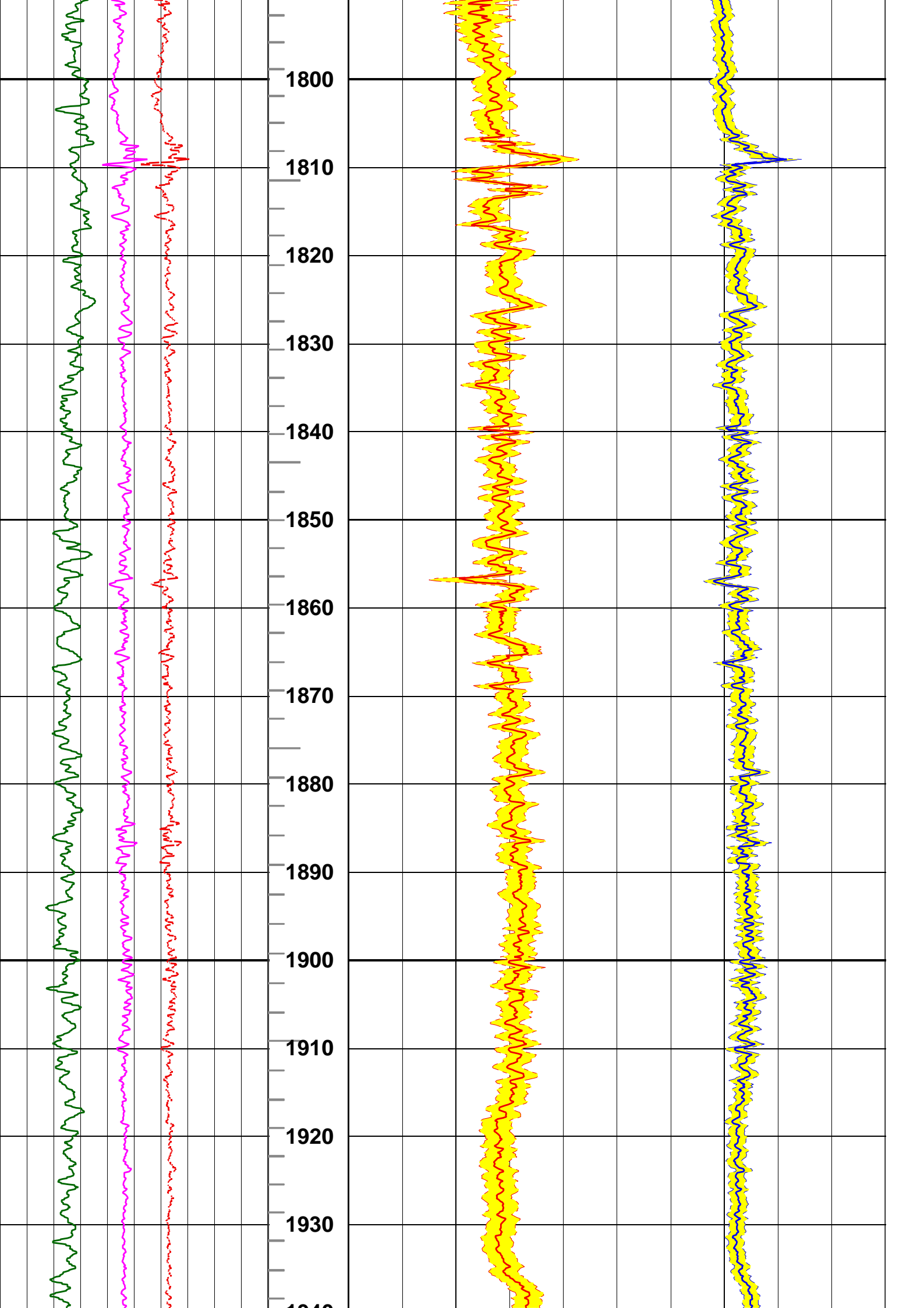
Mud and Borehole Measurements:

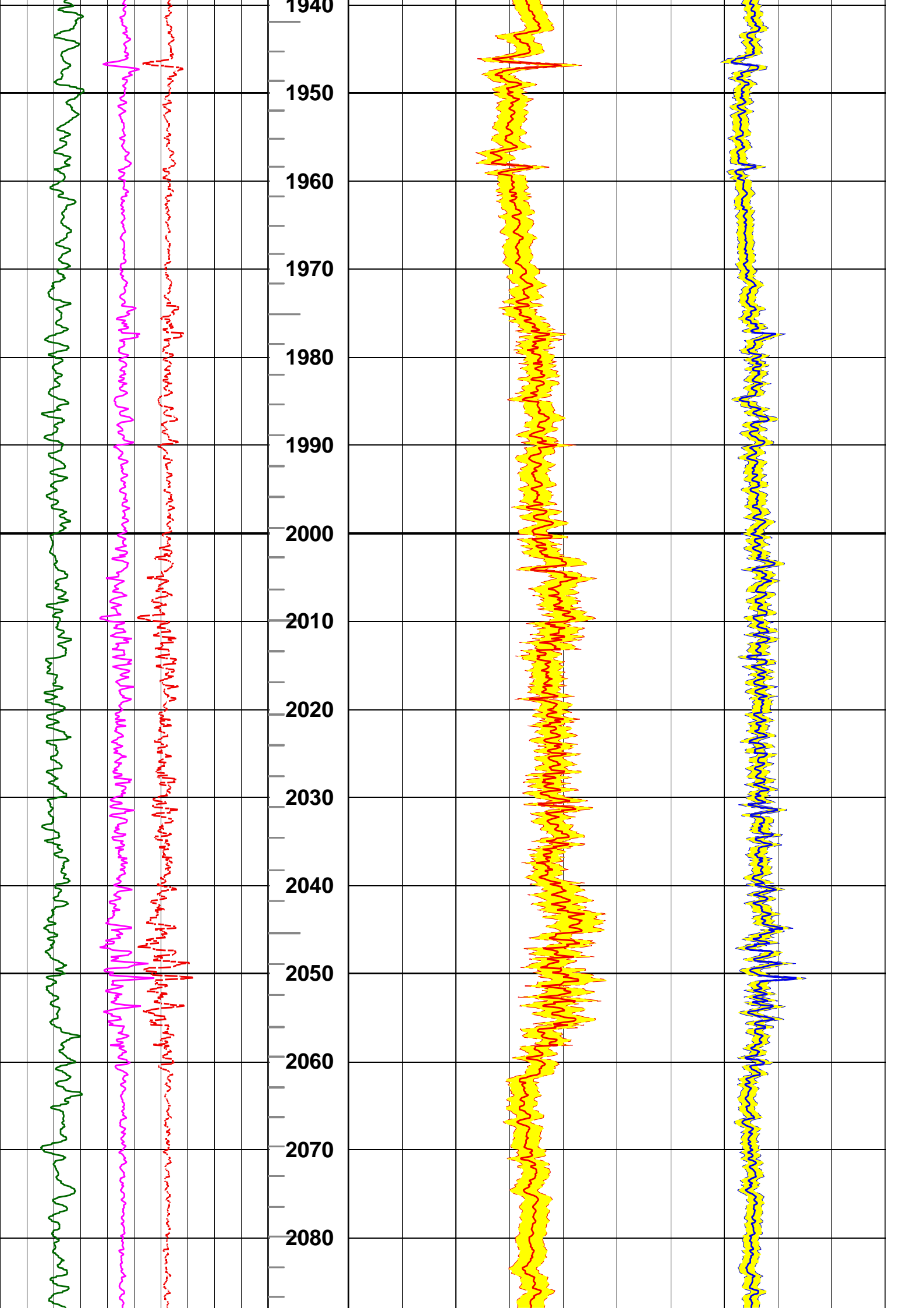
Rm @ Measured Temperature: 0.0868ohm.m @ 25.6degC	BHT:	Bitsize: 12.25in
Rmf @ Measured Temperature: @	Type Fluid in Hole:	
Rmc @ Measured Temperature: @	Mud Density: 1.35g/cm3	

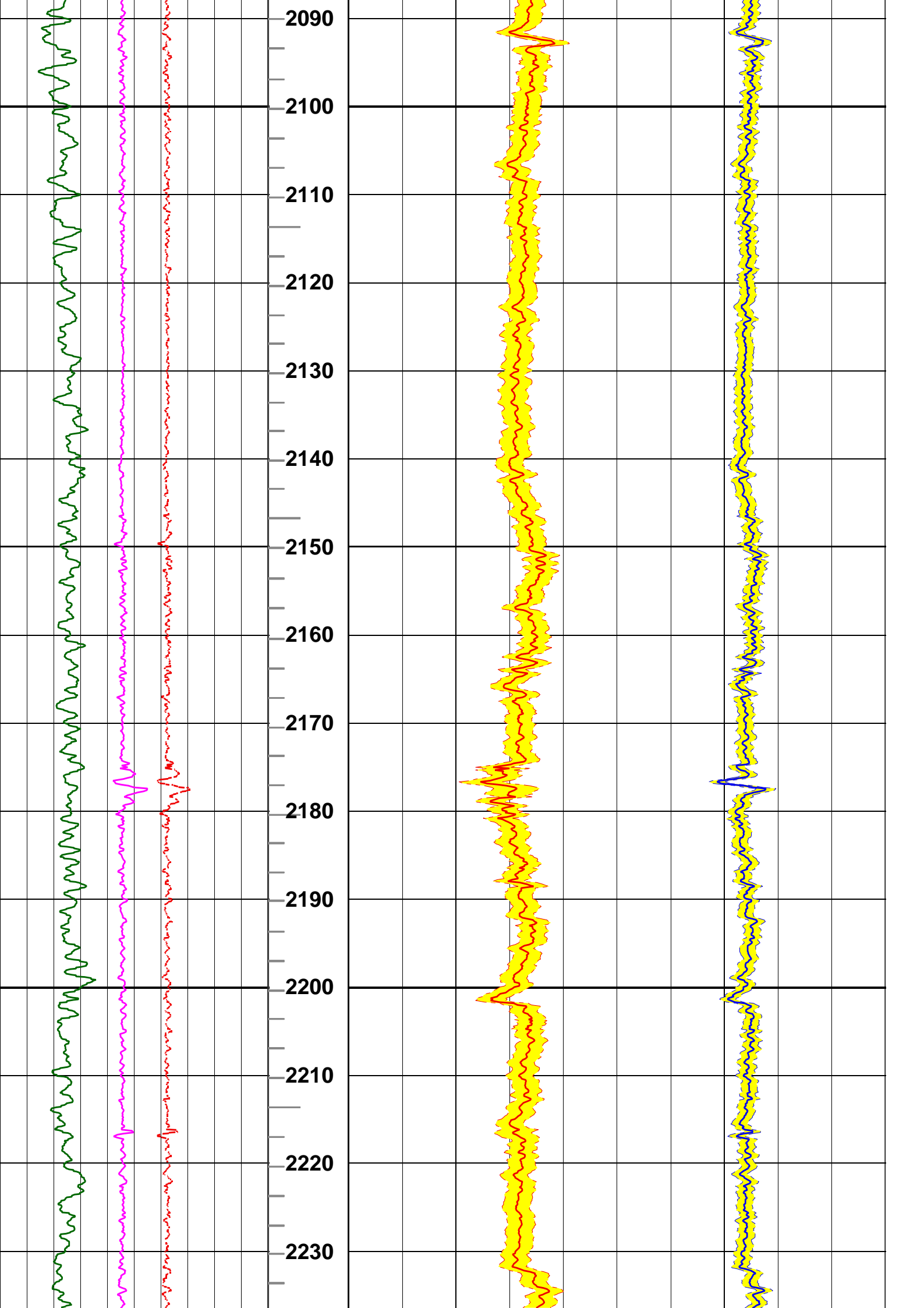
Remarks:
sonicVision9 run in hole drilled with 12.25" bit size.
The data is affected by drilling speed
Drilling speed of over 55m/hr (180ft/hr) will result in data not being sampled every 6".
For processing parameters see the bottom of the log.

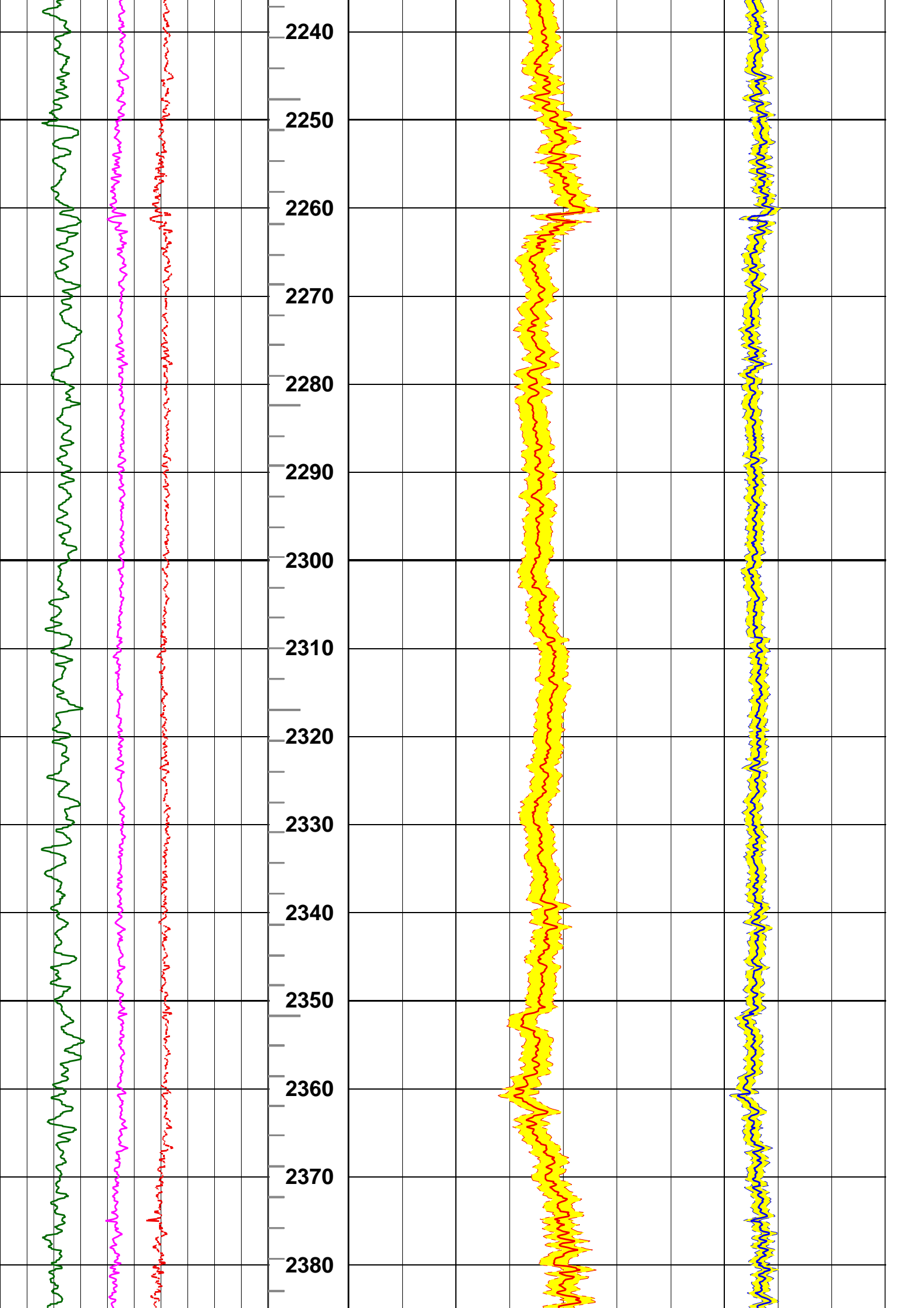
ITT PIPS - Small:1ms ; Large:10ms

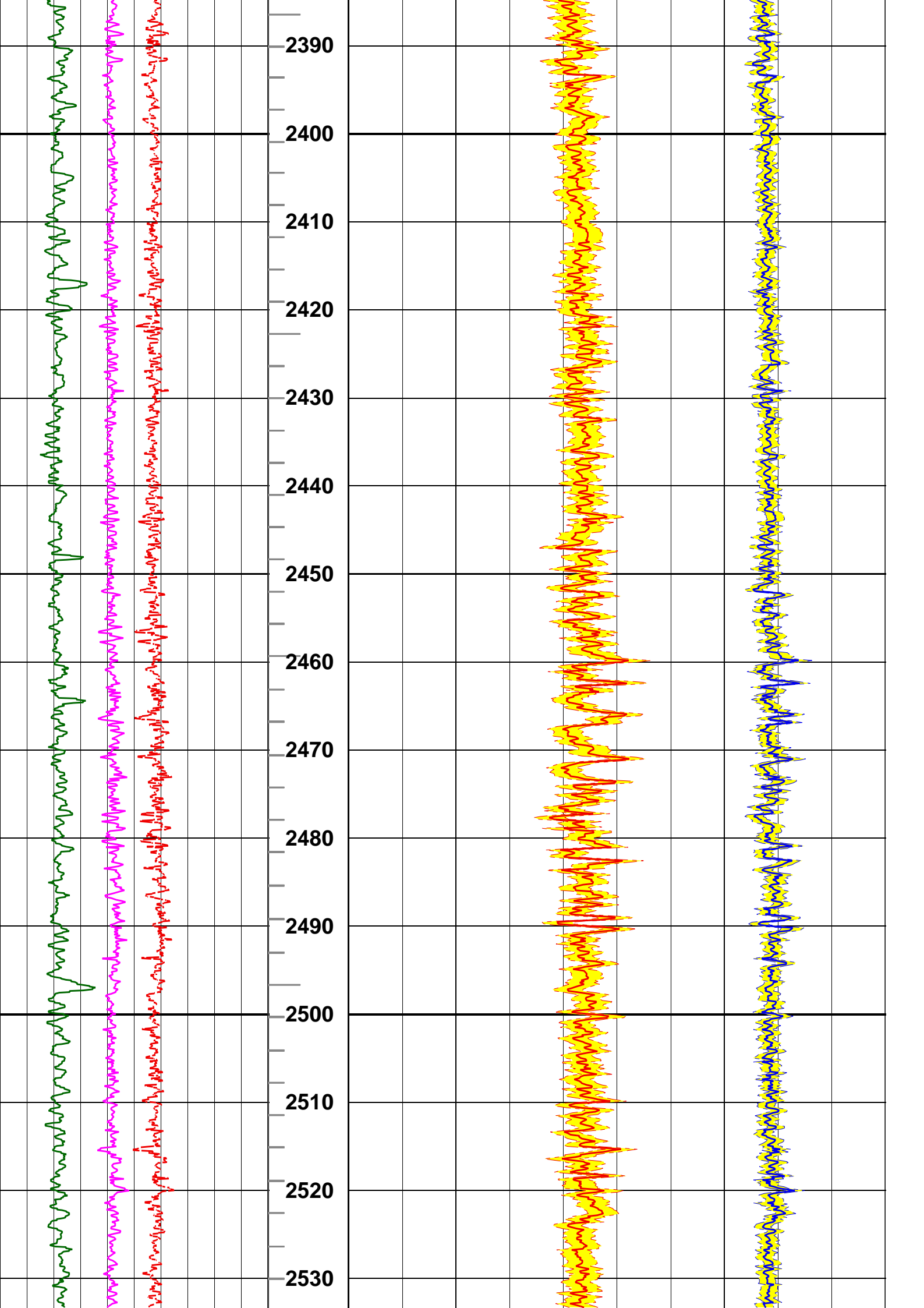


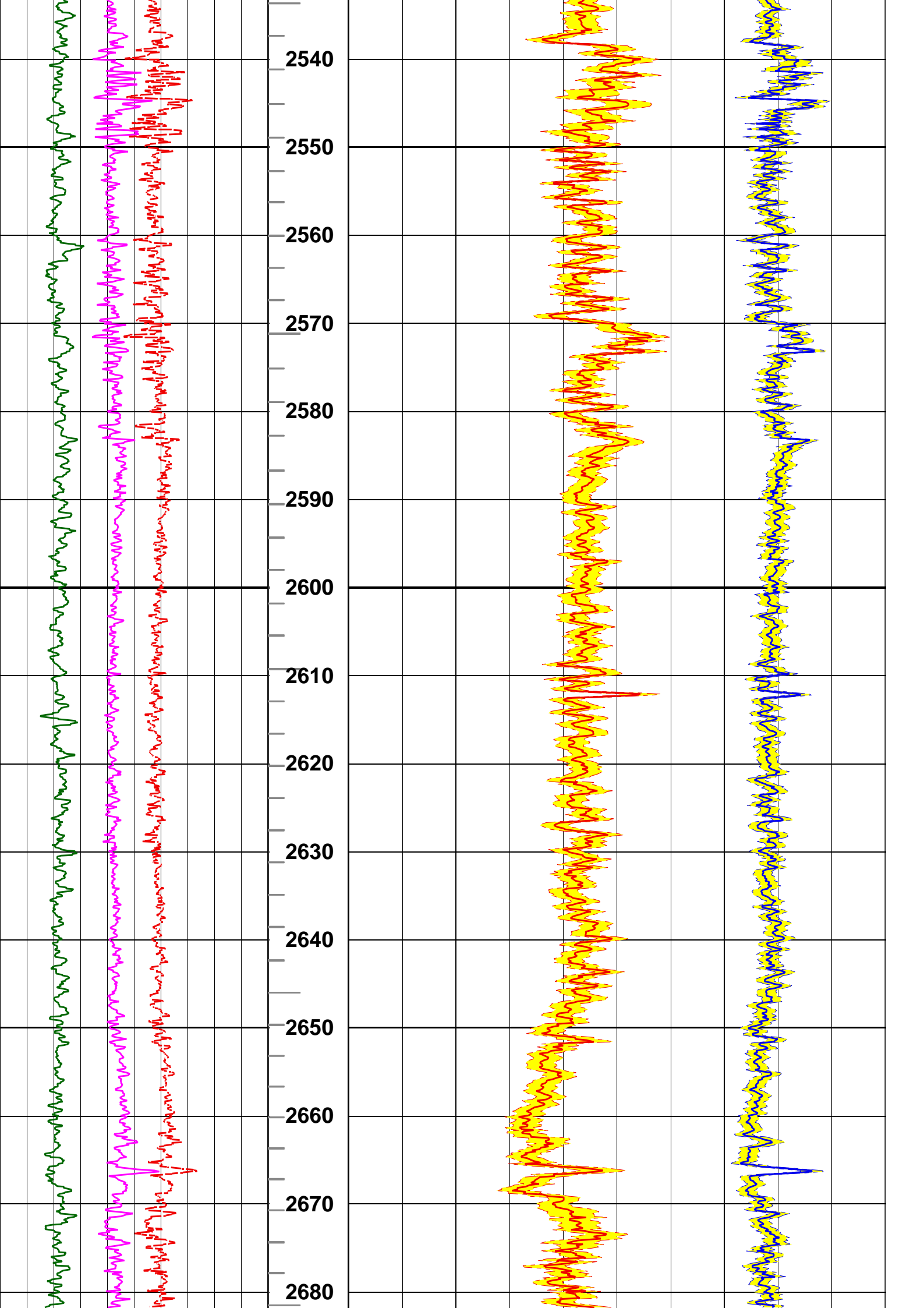


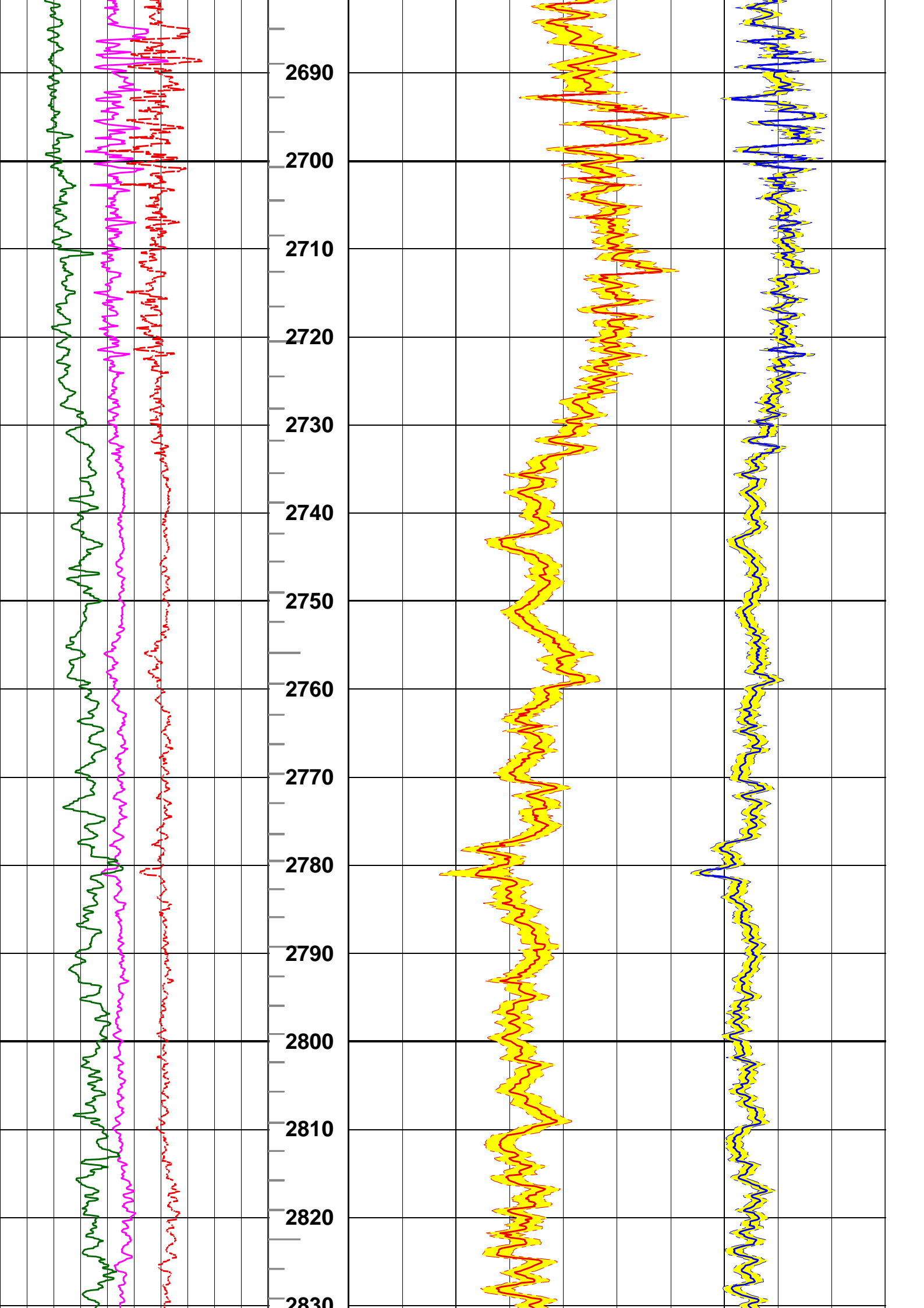


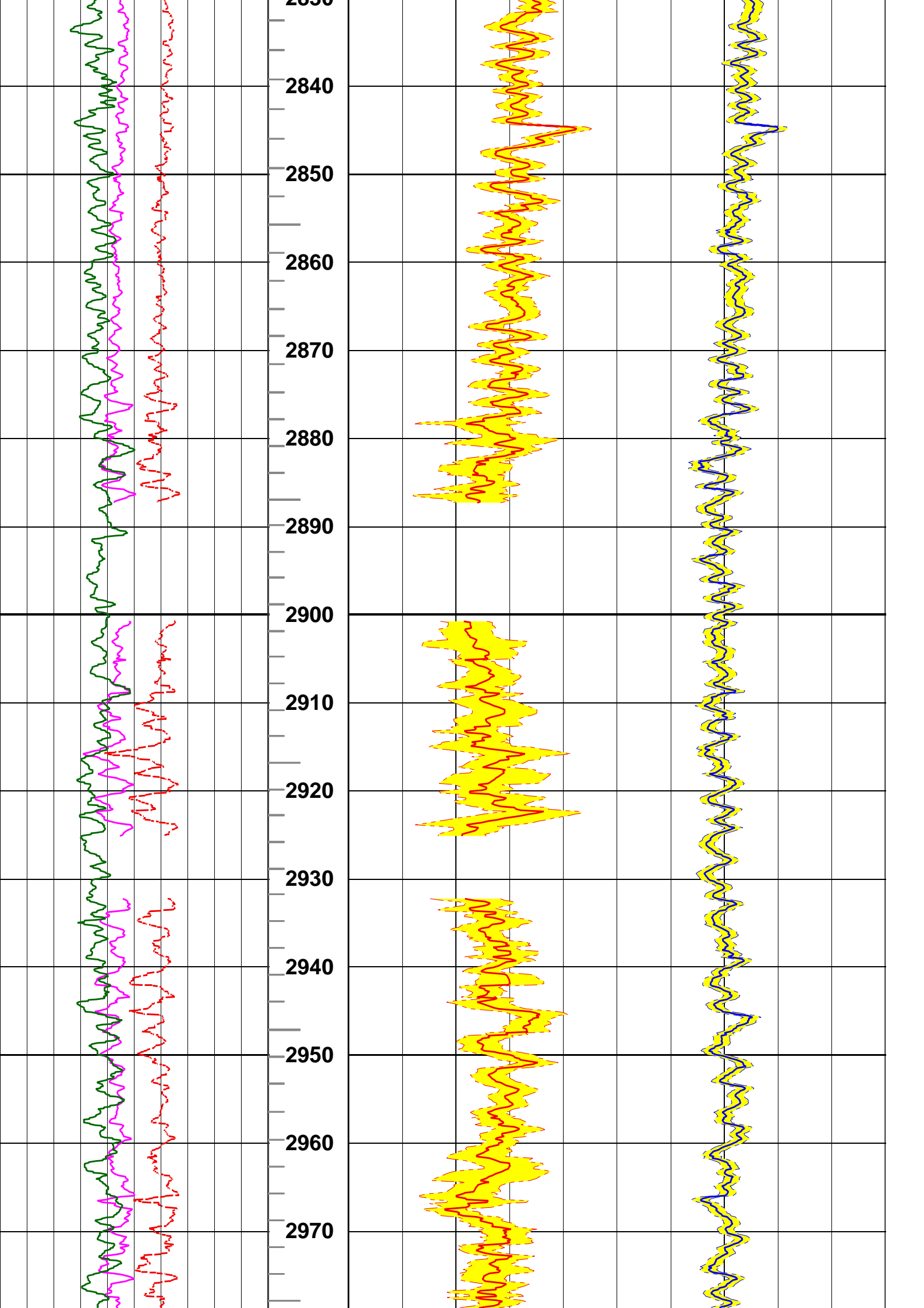


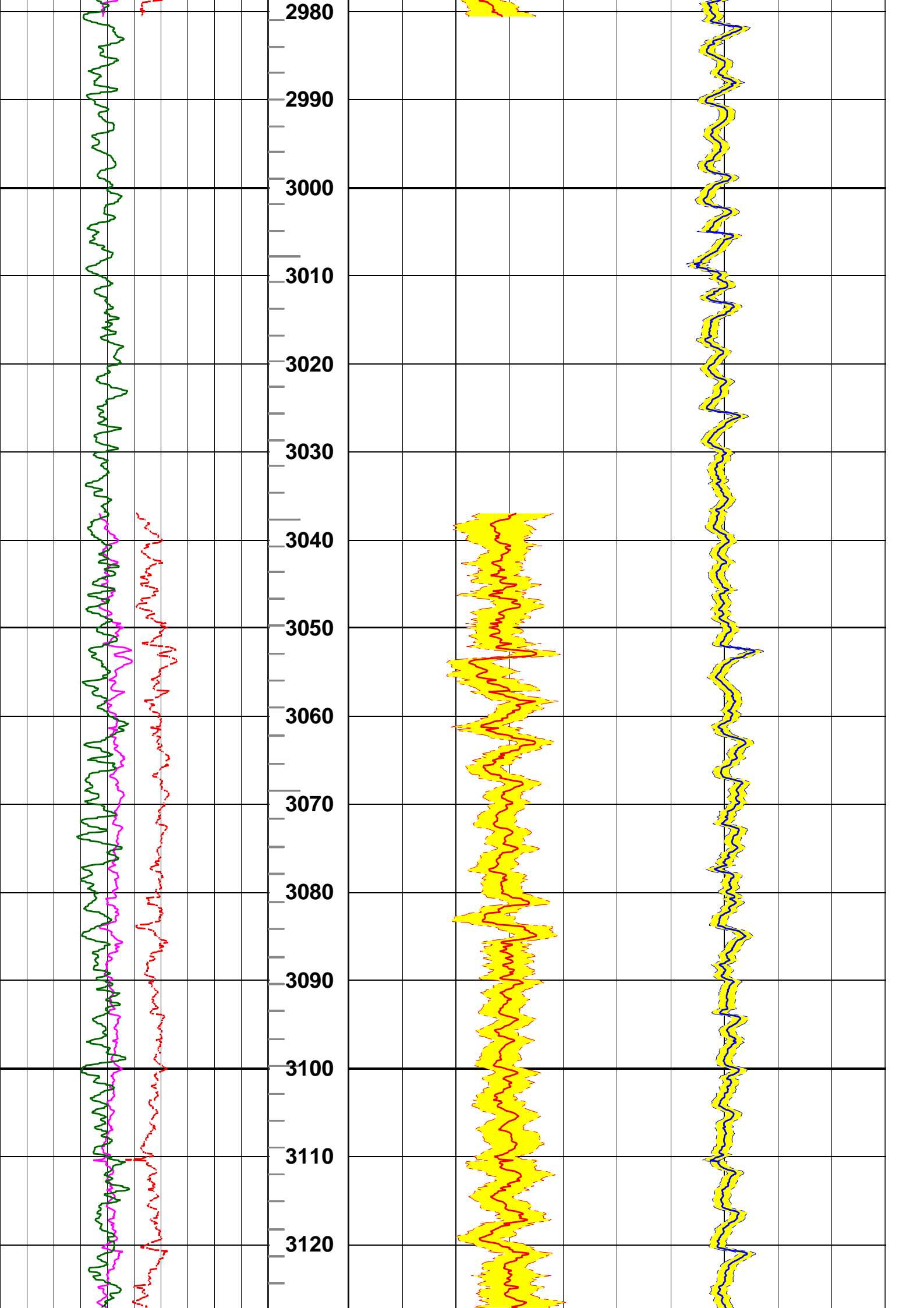


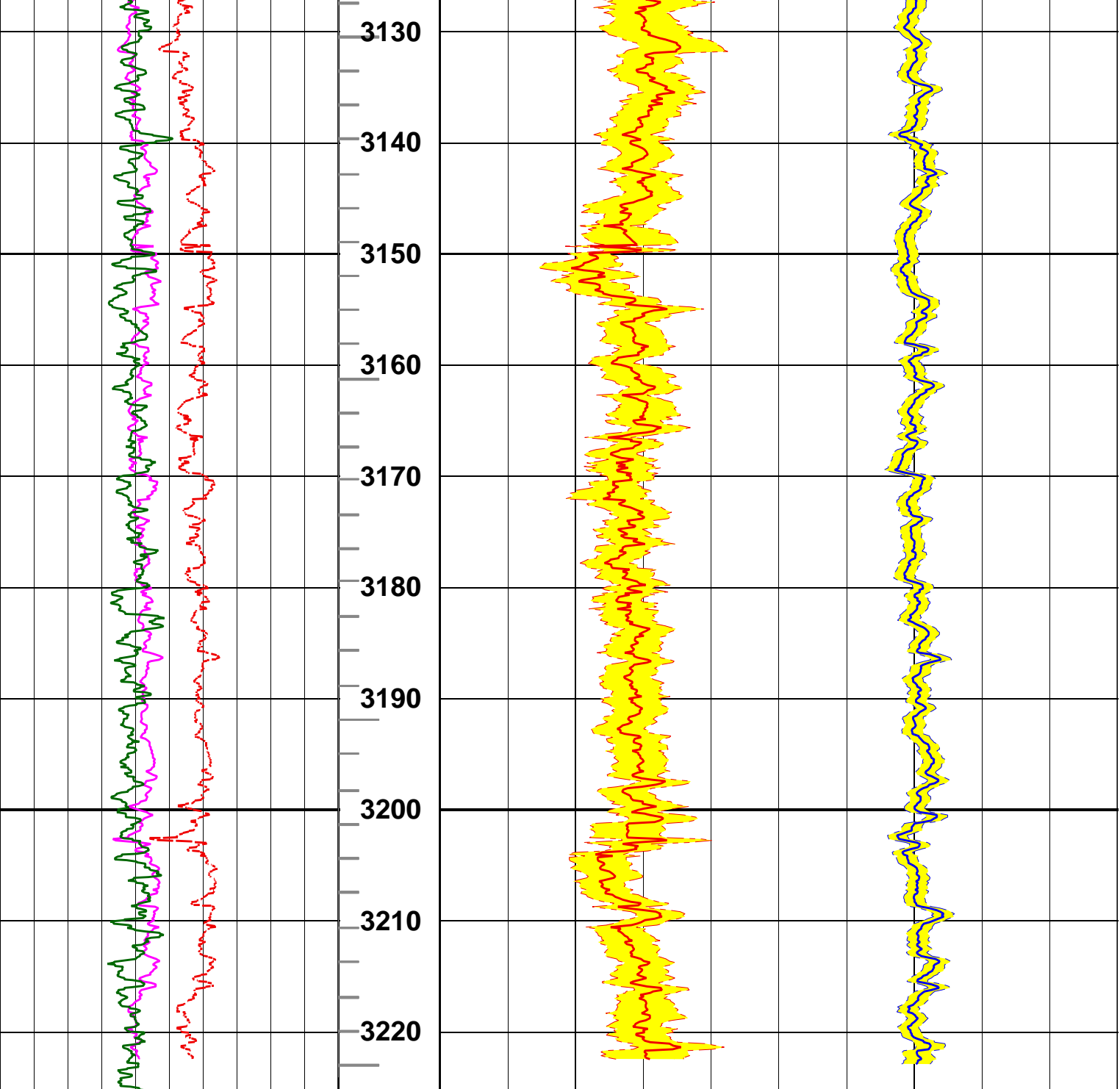






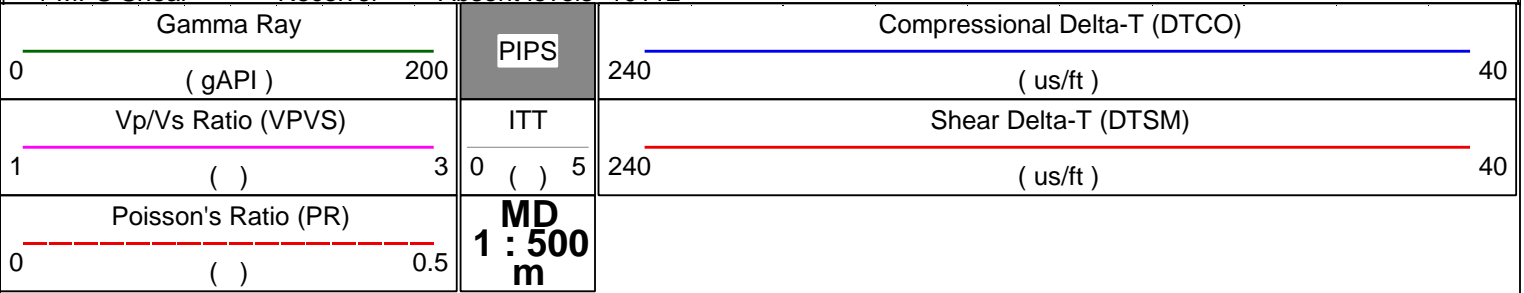




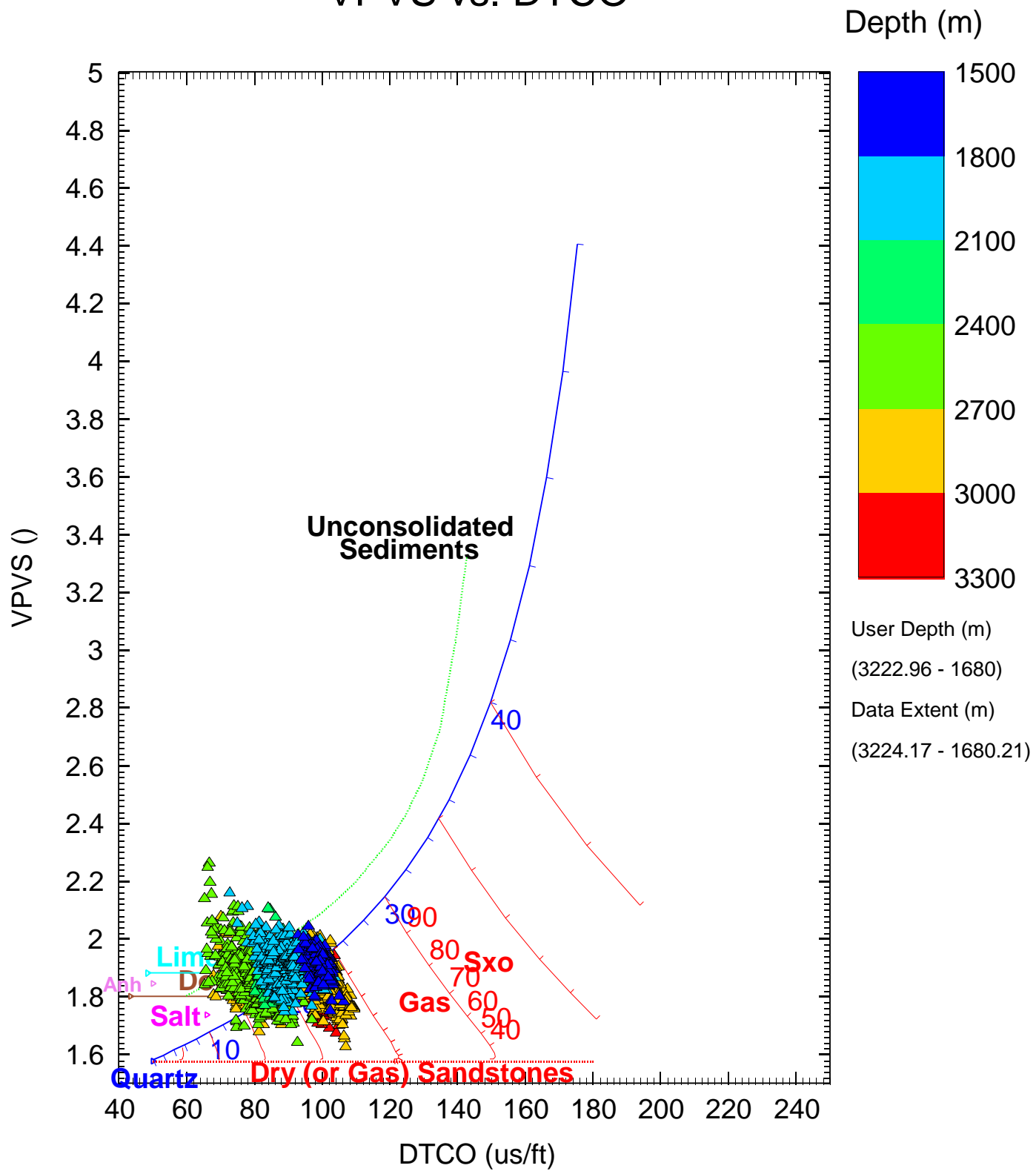


--- Finalization Result ---

- 1 MPS Compressional Receiver Absent levels= 161
- 1 MPS Compressional Transmitter Absent levels= 165
- 2 MPS Compressional Receiver Absent levels=10112
- 2 MPS Compressional Transmitter Absent levels=10108
- 1 MPS Shear Receiver Absent levels=10112



VPVS vs. DTCO



Template: empirical relationship for vertical wells (vertically polarized compressional, horizontally polarized shear)

Monopole Compressional and Shear Processing QC

WF VDL

400 (us) 3378

TICS
400 (us) 3378

TISS
400 (us) 3378

SpcRC
0 (Hz) 30000

SpcRS
-15000 (Hz) 15000

CfRC
0 (Hz) 30000

CfRS
-15000 (Hz) 15000

STPrjR
39 (us/ft) 240

DtRC
39 (us/ft) 240

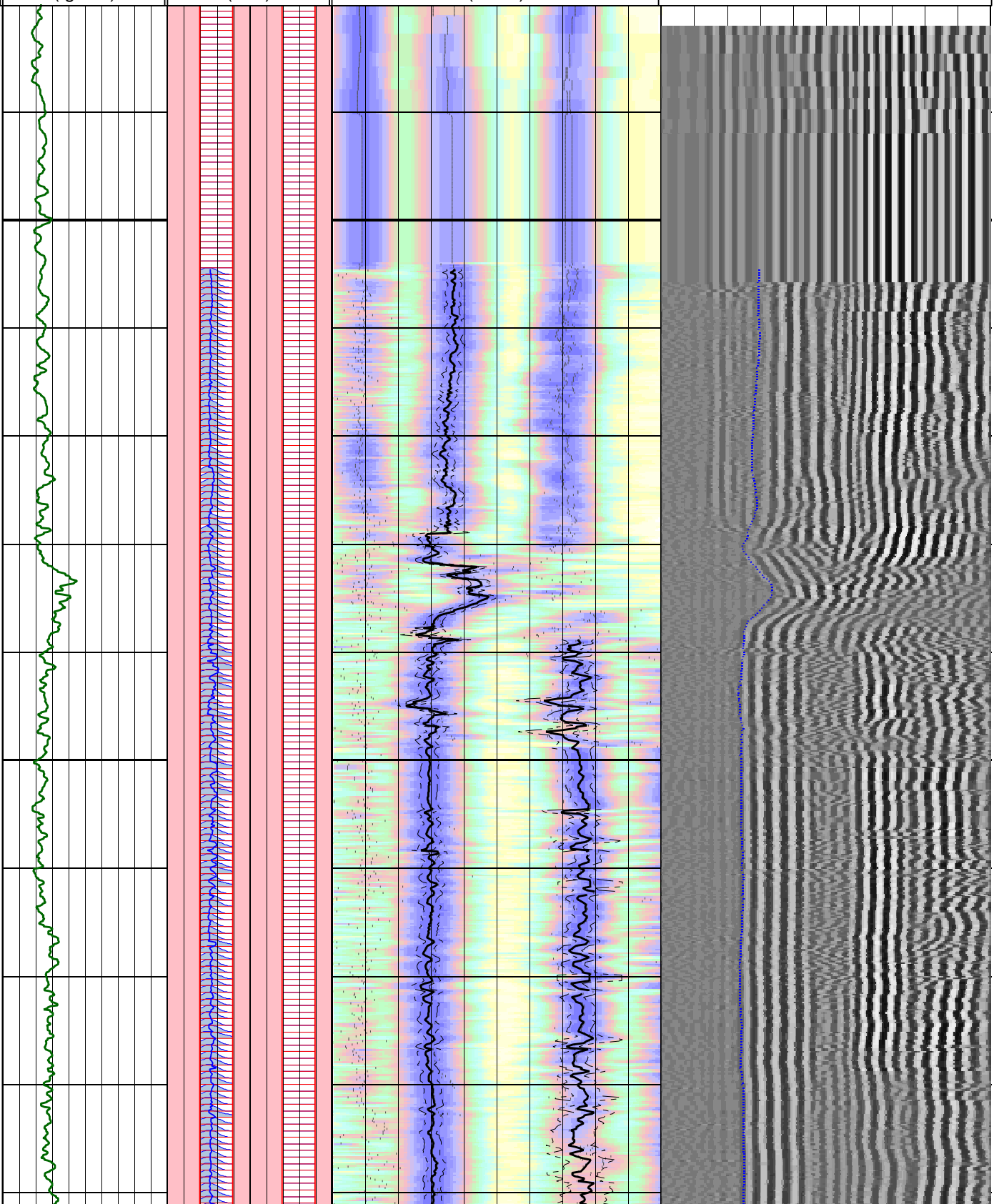
DtRS
39 (us/ft) 240

TIVflag

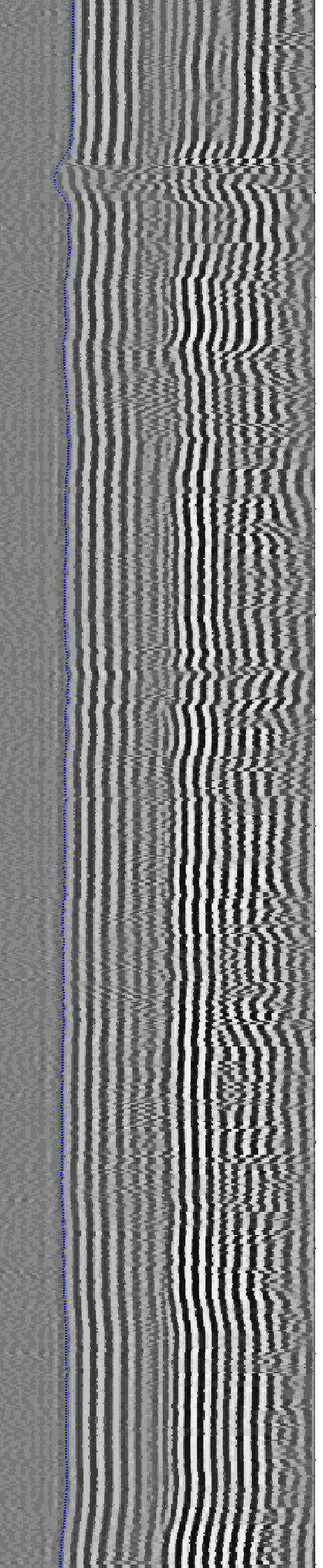
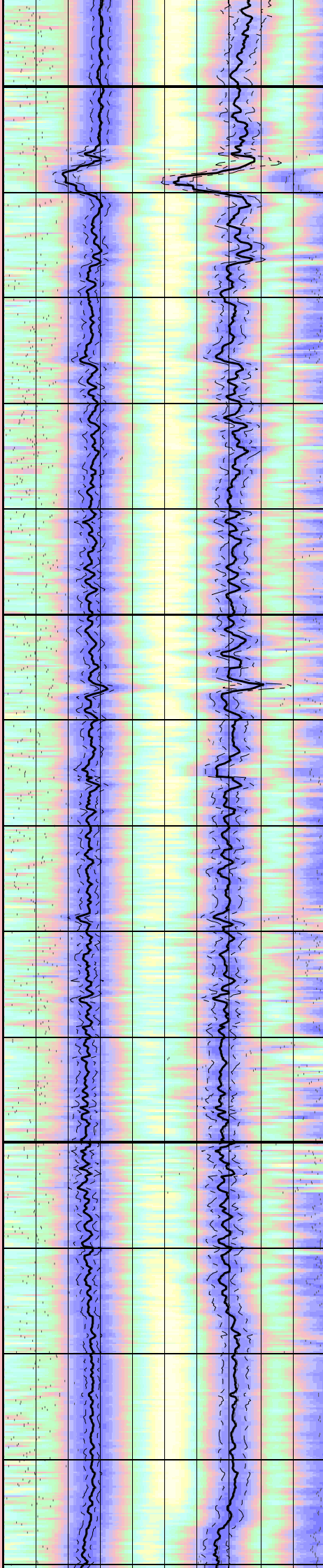
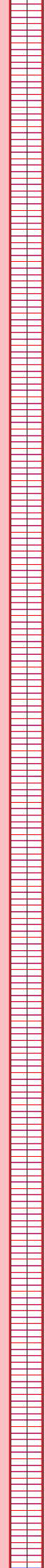
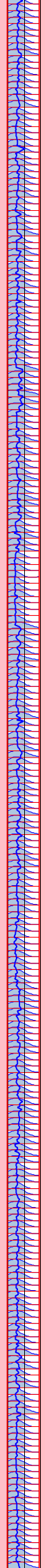
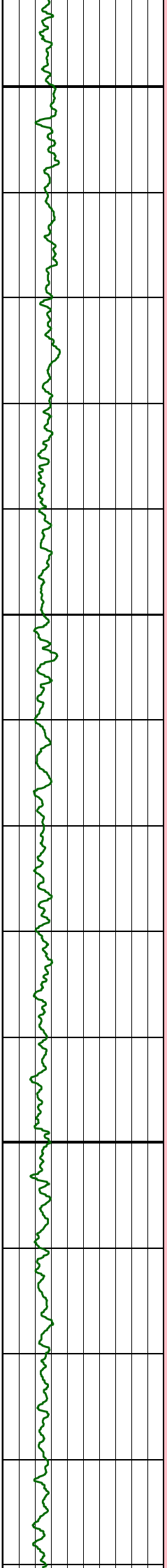
MD
1 : 500
m
1680

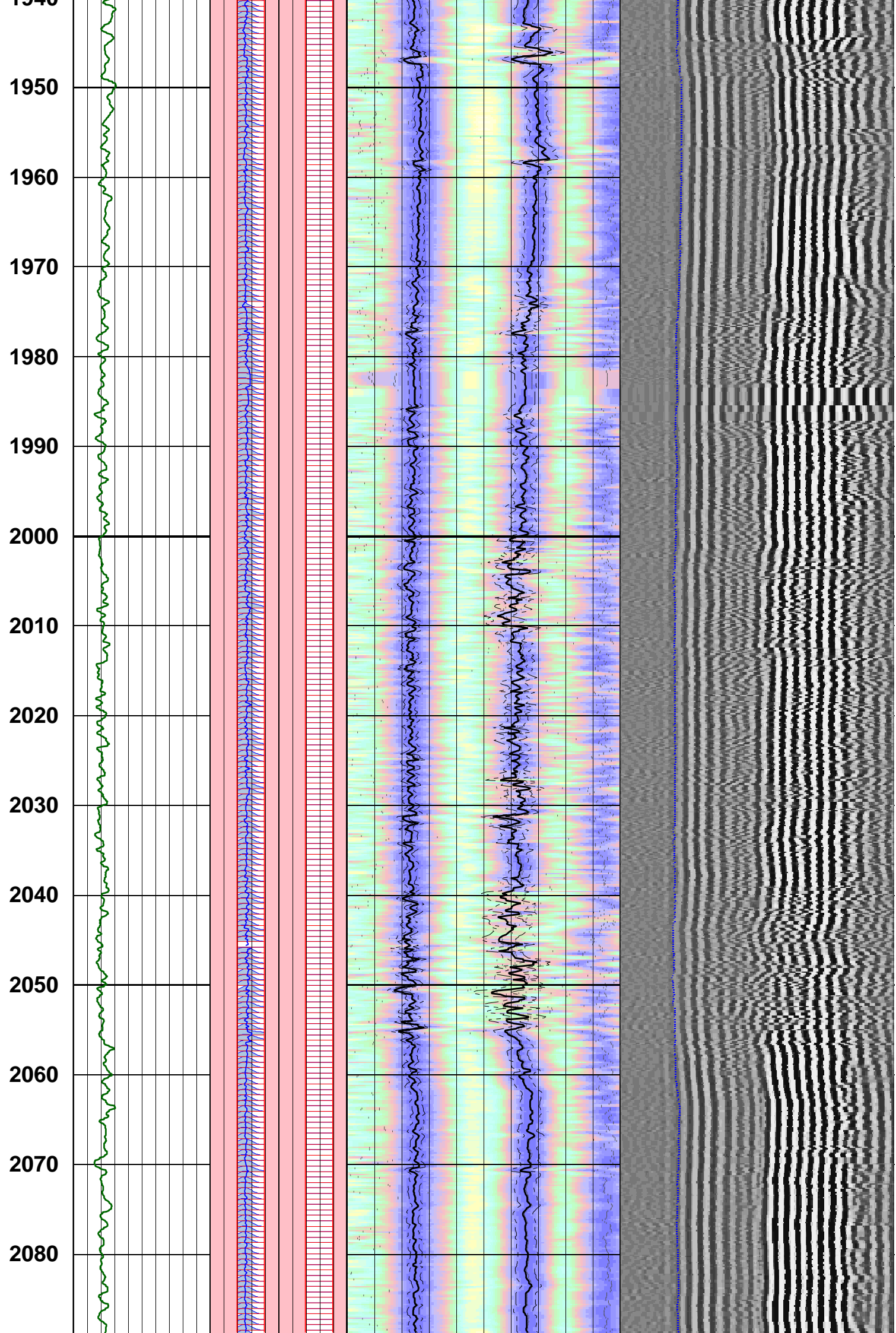
Gamma Ray
0 (gAPI) 200

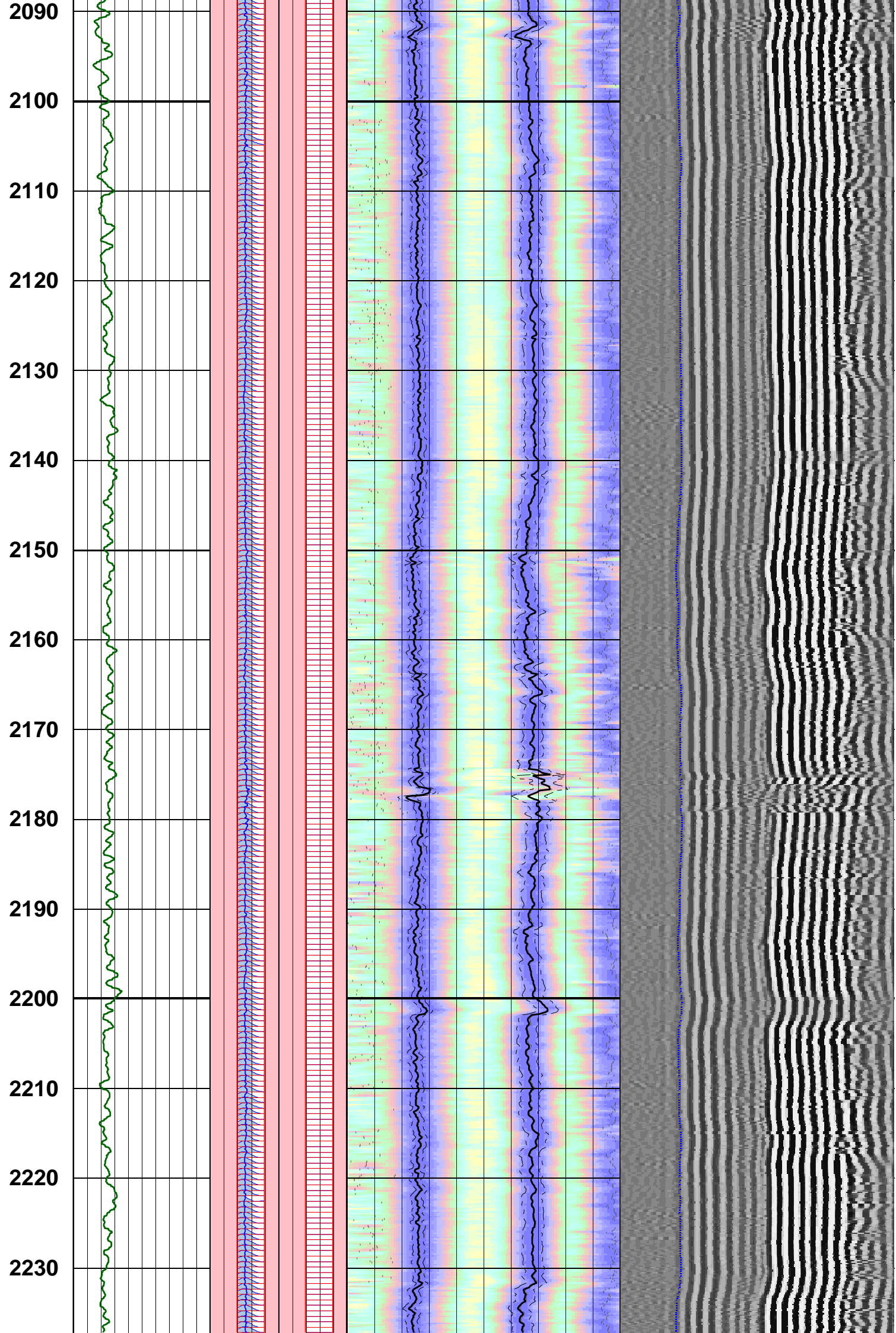
1680
1690
1700
1710
1720
1730
1740
1750
1760
1770
1780
1790

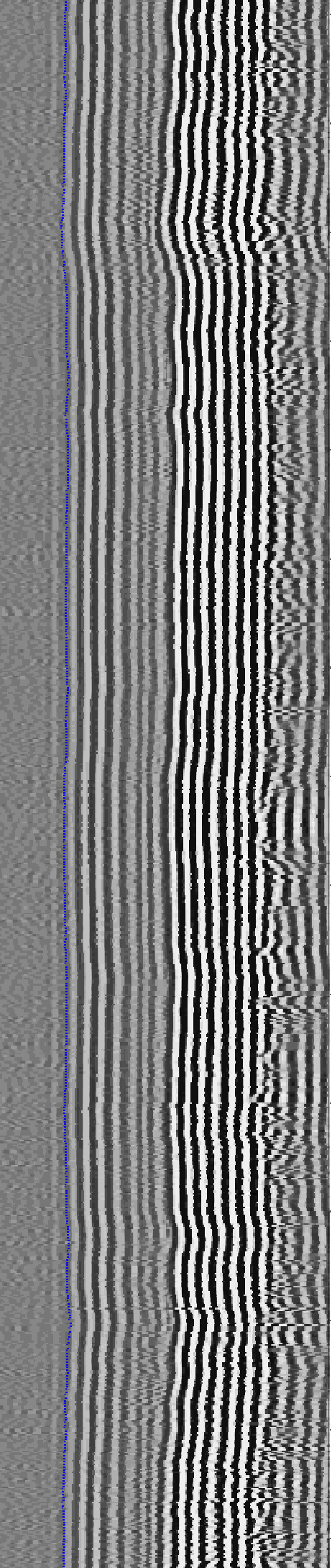
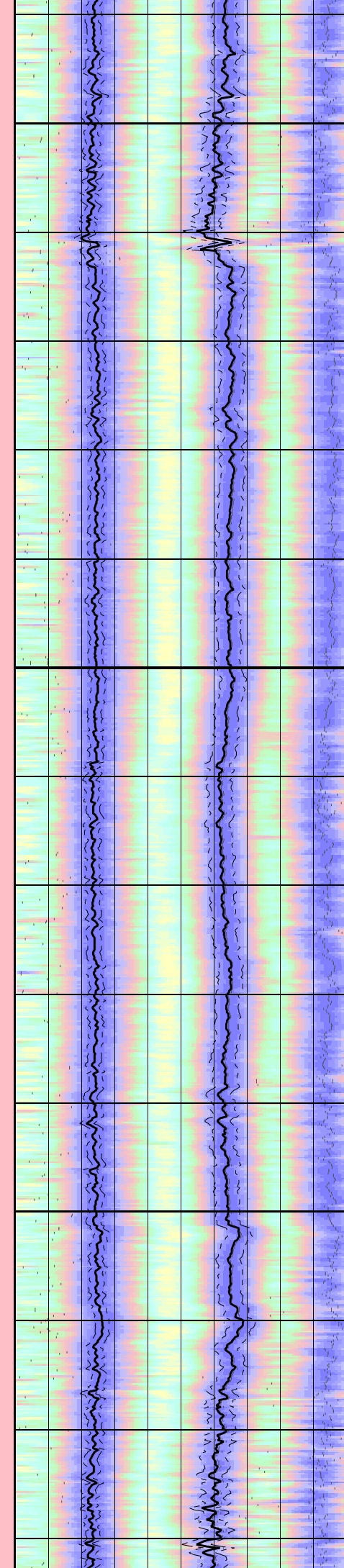
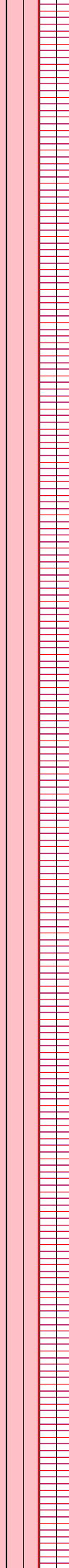
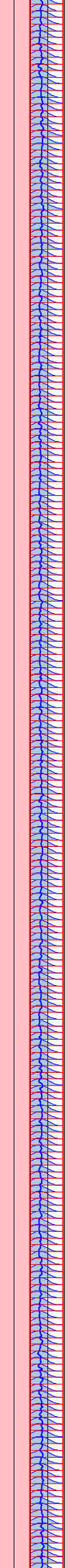
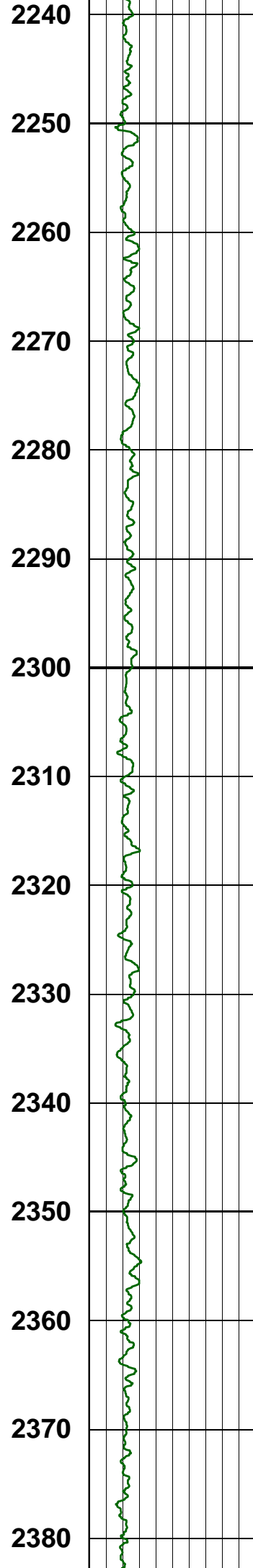


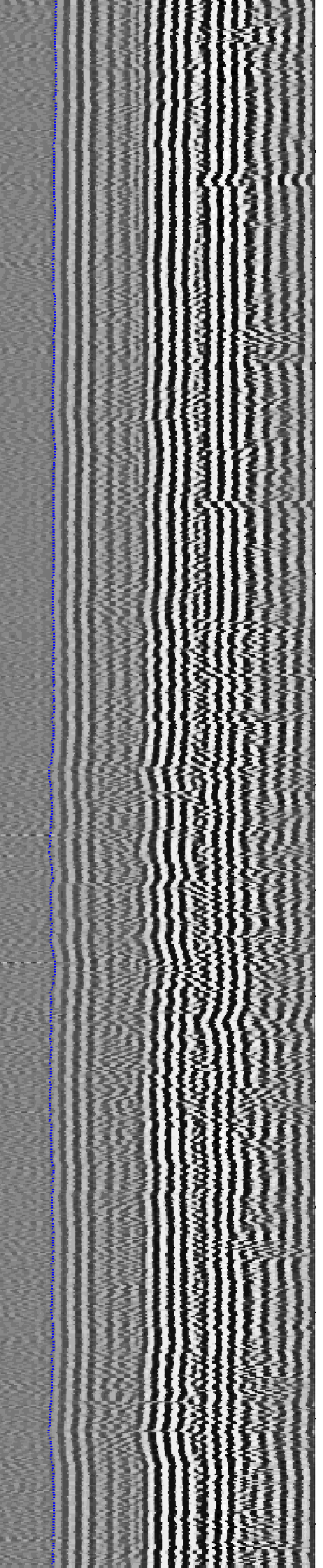
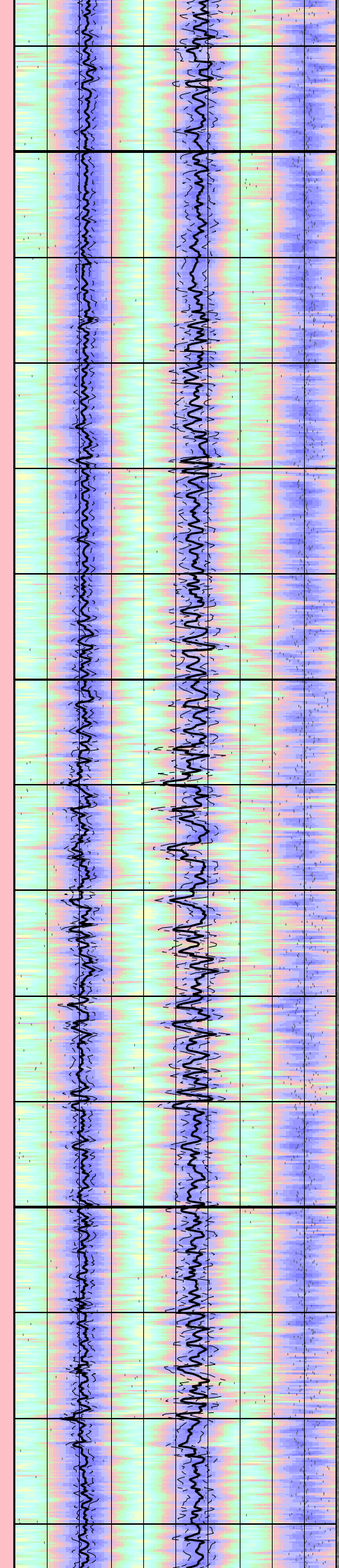
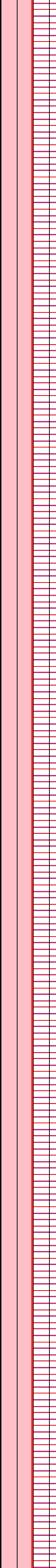
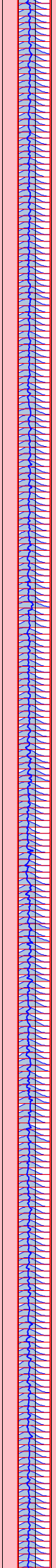
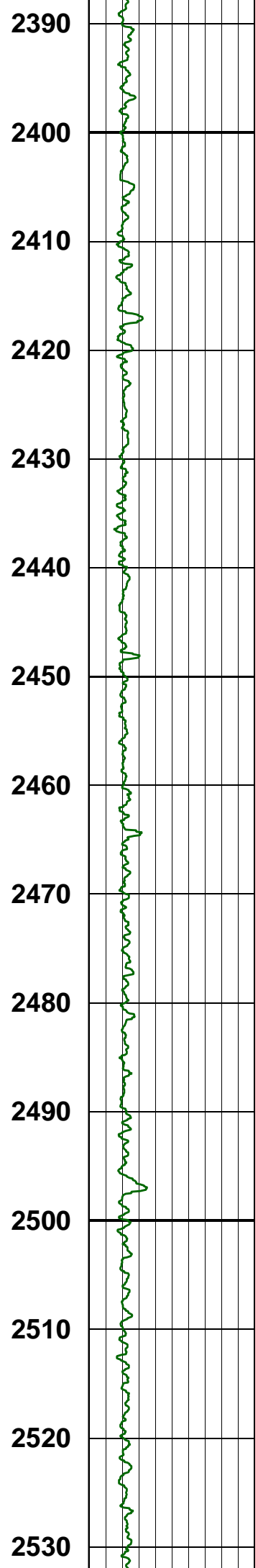
1800
1810
1820
1830
1840
1850
1860
1870
1880
1890
1900
1910
1920
1930
1940



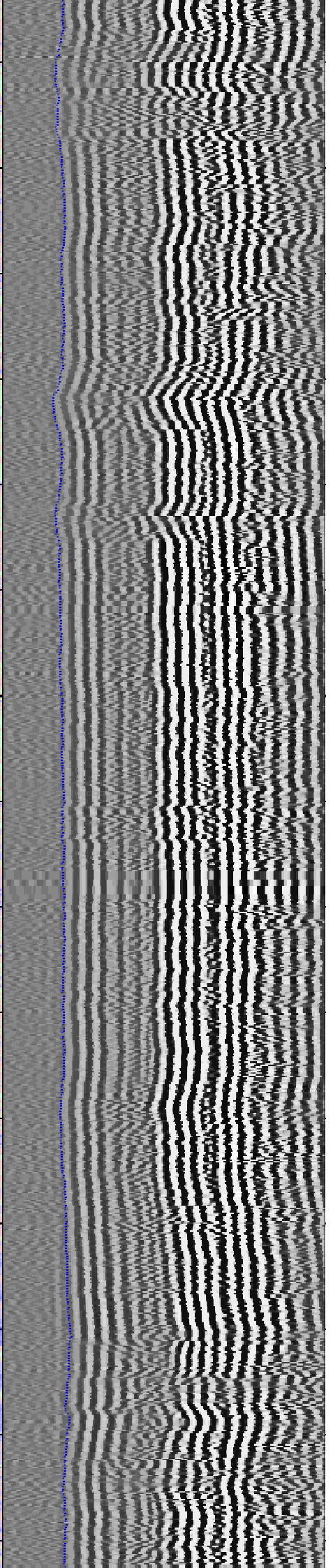
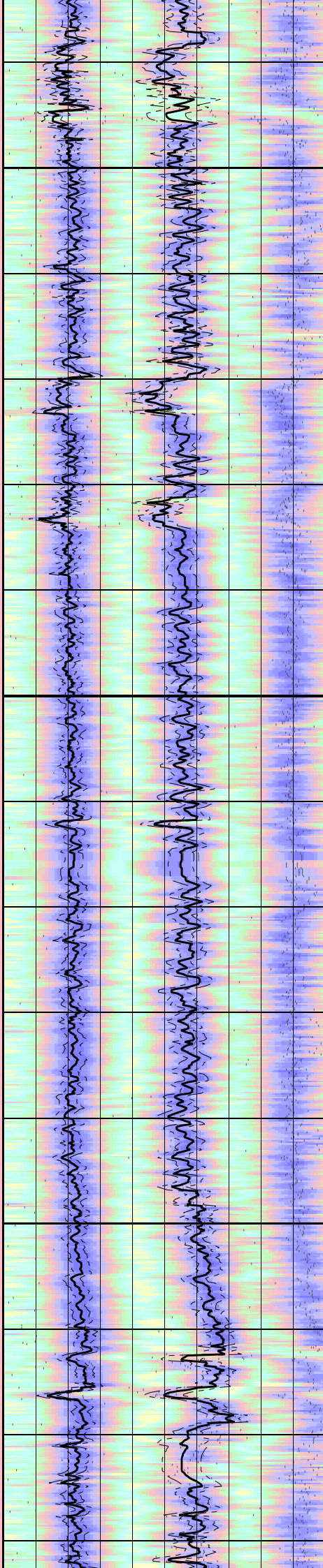
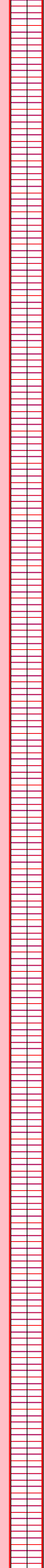
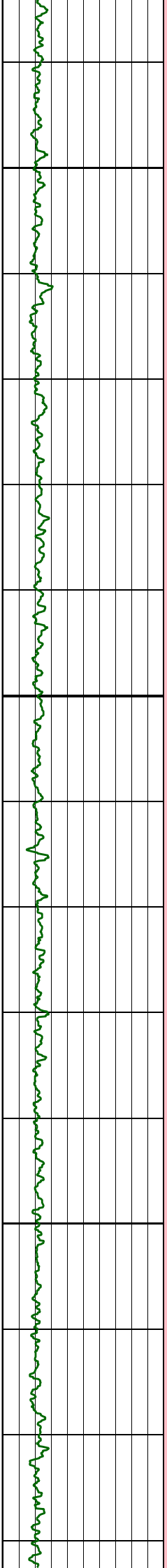


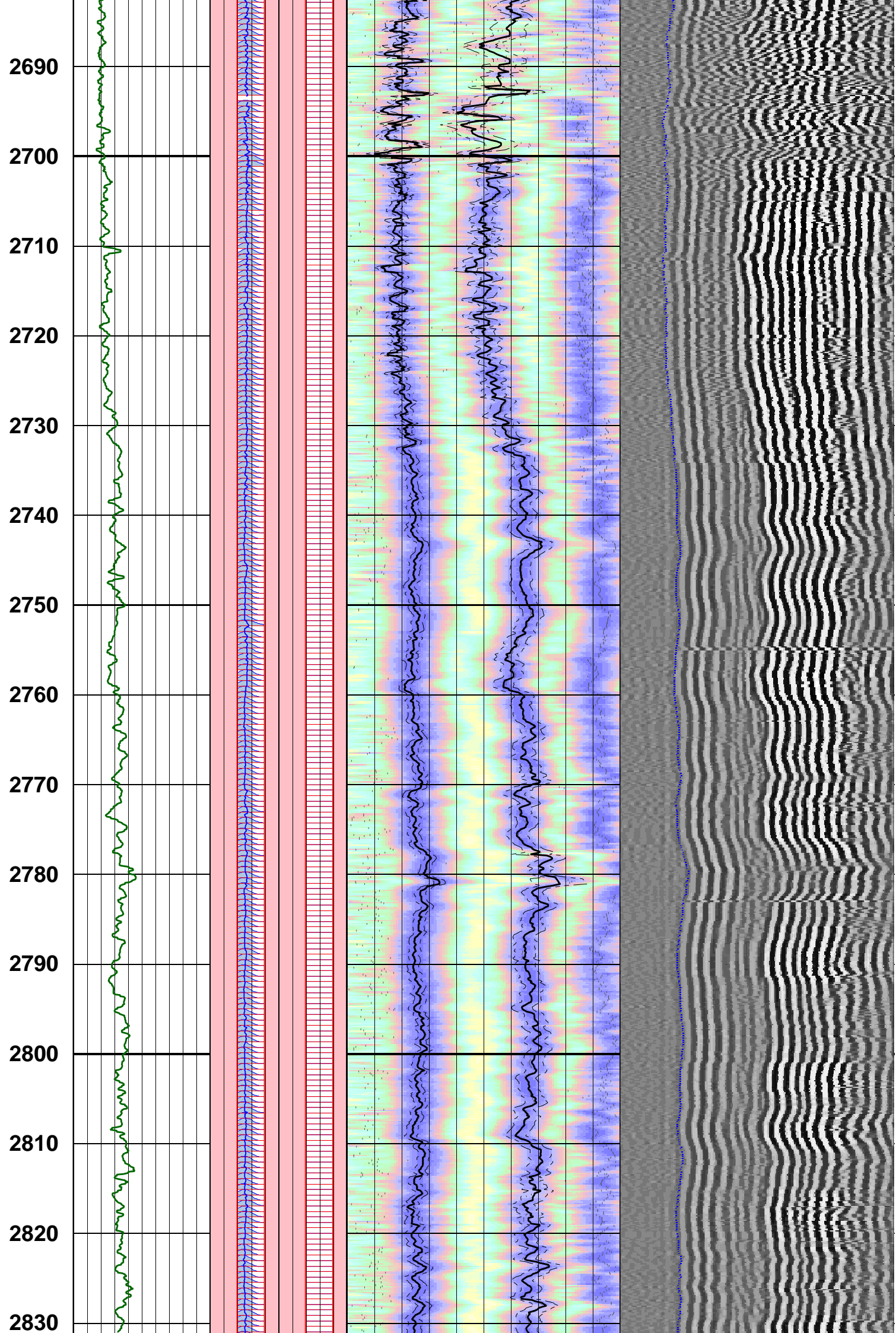




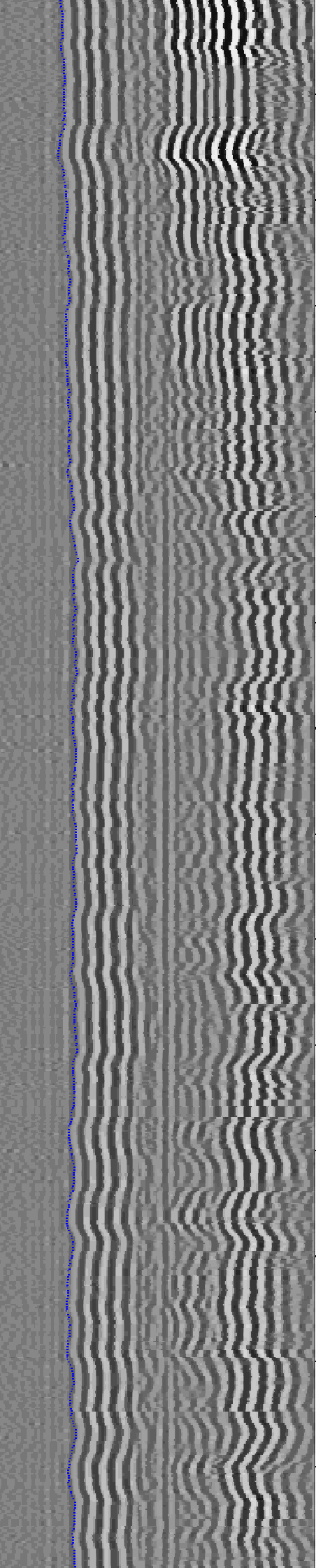
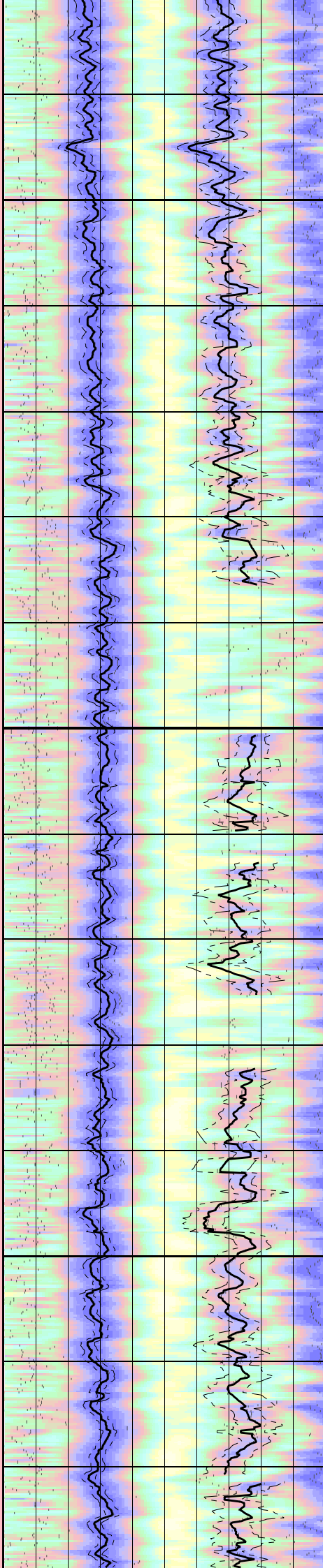
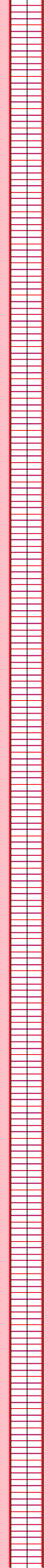
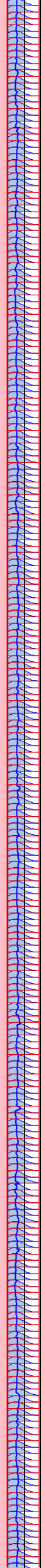
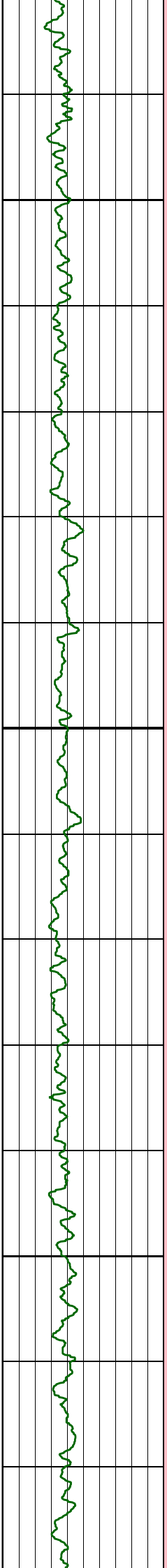


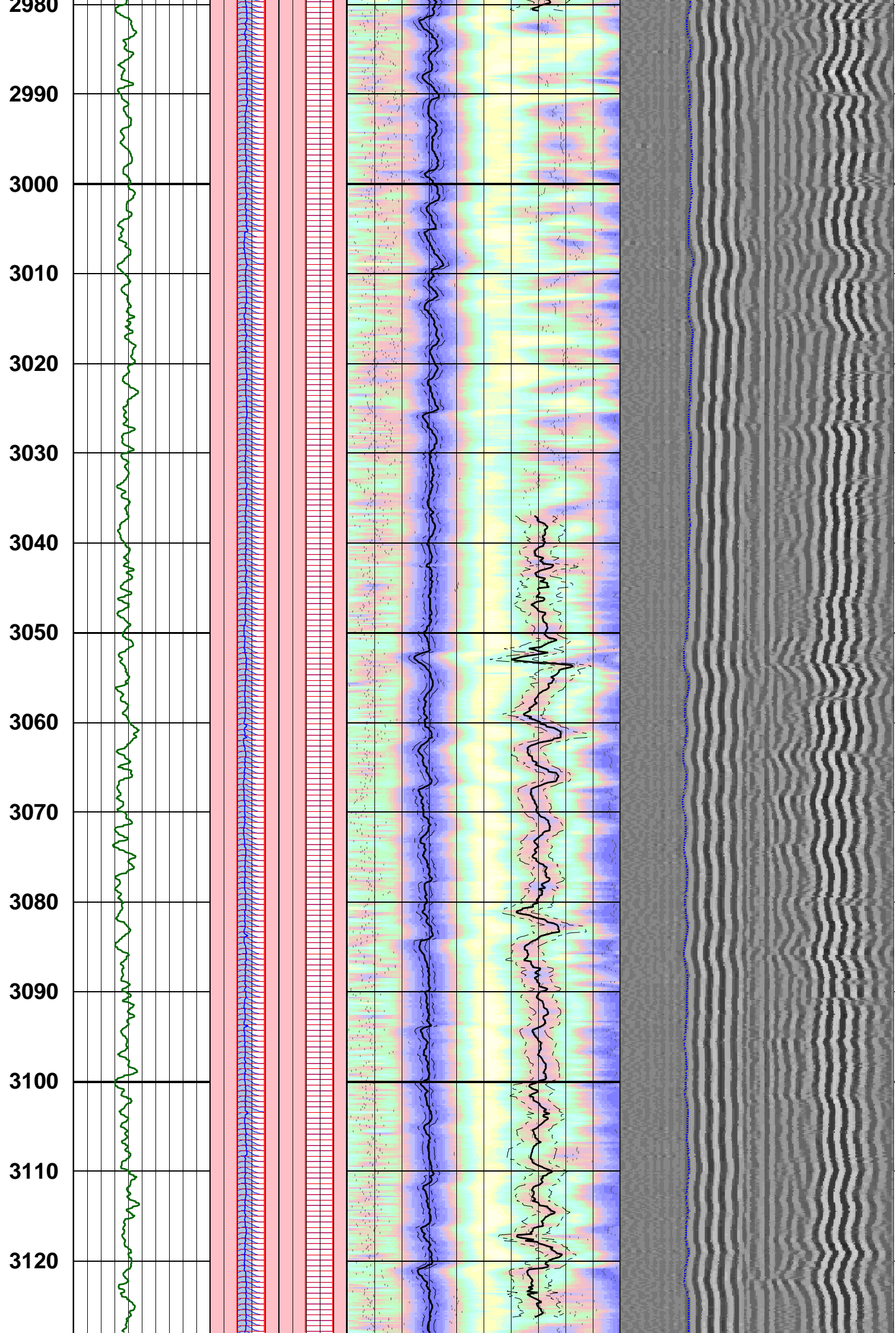
2540
2550
2560
2570
2580
2590
2600
2610
2620
2630
2640
2650
2660
2670
2680

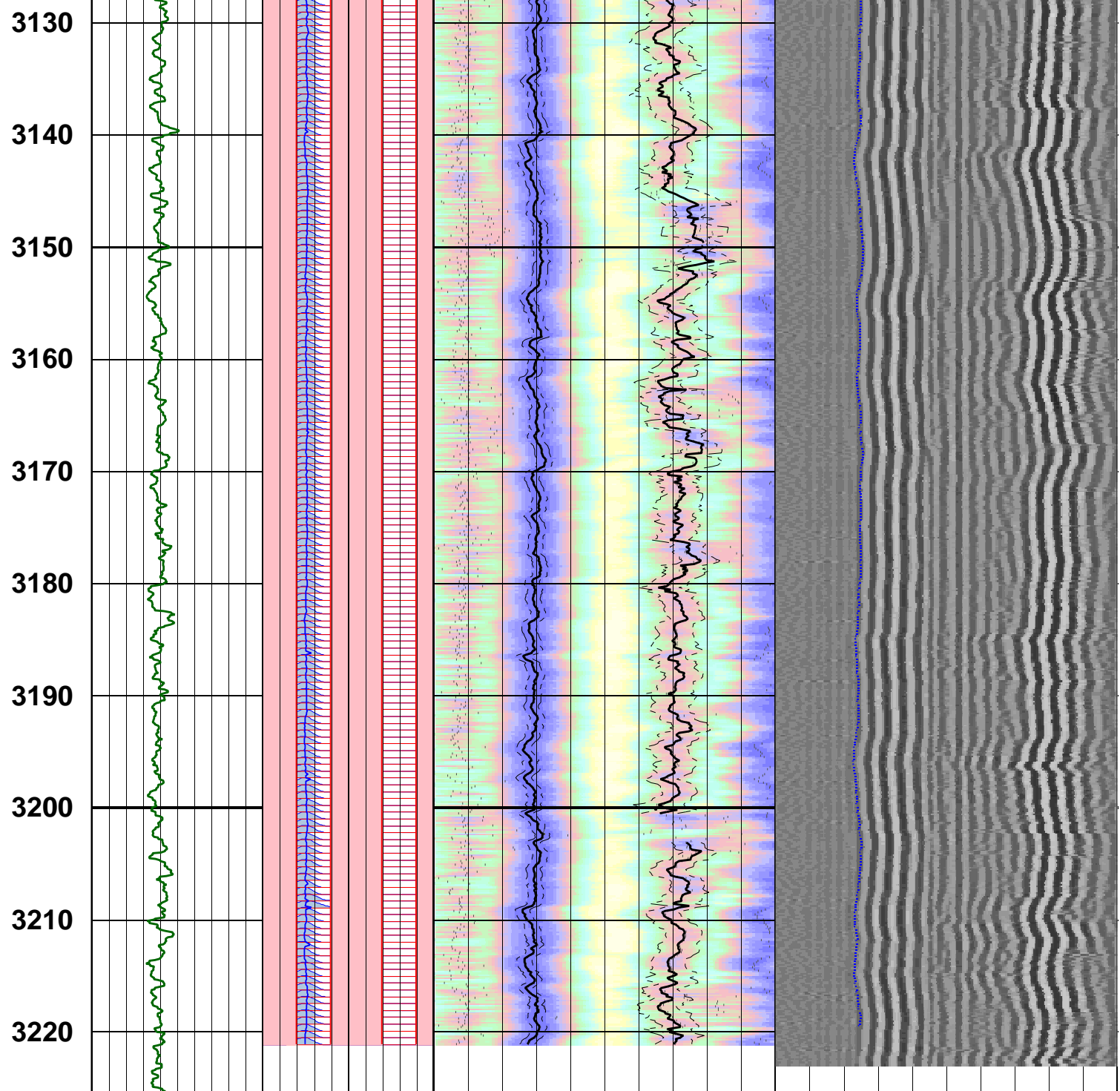




2840
2850
2860
2870
2880
2890
2900
2910
2920
2930
2940
2950
2960
2970
2980







Customized Process: Start Depth (3224.17 m), Stop Depth (1680.2 m), Logging Mode (sonicVISION - MPS_WIDE)
 Noise Cut Filtering(No), Casing Cut Filtering(No)
 WF_FLG(1 1 1 1), MUD_TYPE(WBM), STCAL(Full Array)
 TRSPAC(3.05714), RRSAPAC(0 0.2032 0.4064 0.6096)
 Mud Slowness (no input)
 Hole Diameter (no input)

TIVflag	Logging Guide (Datab@Run_3;1 (187.45 - 3221.13 m)) DtRS Tracking Guide (no input) (GAP) 200	 -15000 (Hz) 15000	39 (us/ft) 240	
		 0 (Hz) 30000	39 (us/ft) 240	
		 -15000 (Hz) 15000	 39 (us/ft) 240	TISS 400 (us) 3378
		 0 (Hz) 30000		TICS 400 (us) 3378
				WF VDL 400 (us) 3378

Company: Apache Energy Ltd.
Well: Elver-1
FIELD: VIC-P59
RIG: Ocean Patriot
STATE: VIC



Date Logged: 30-Dec-2008 Date Processed: 31-Dec-2008