

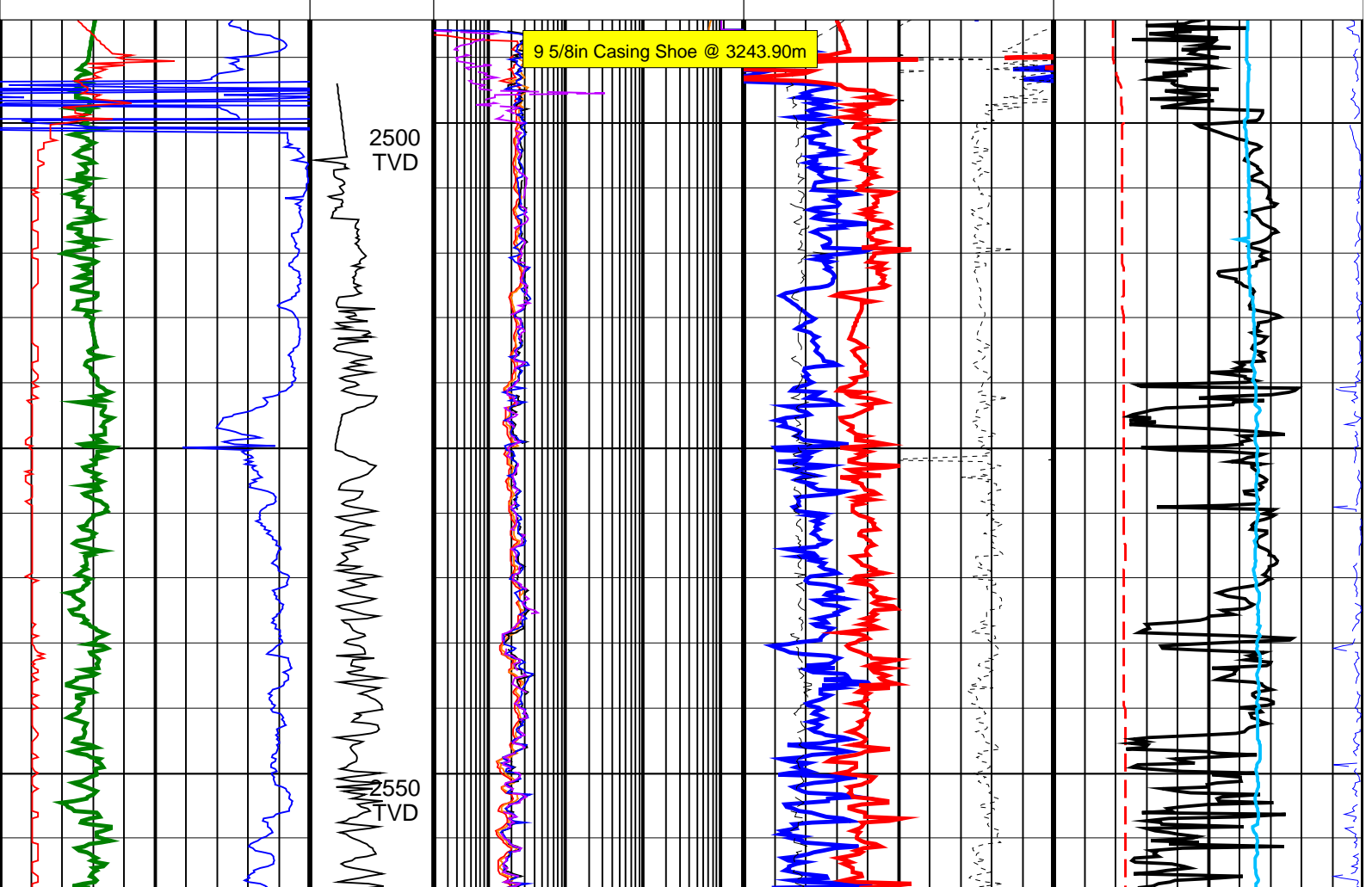
# Elver-1 EcoScope Service RT 500TVD

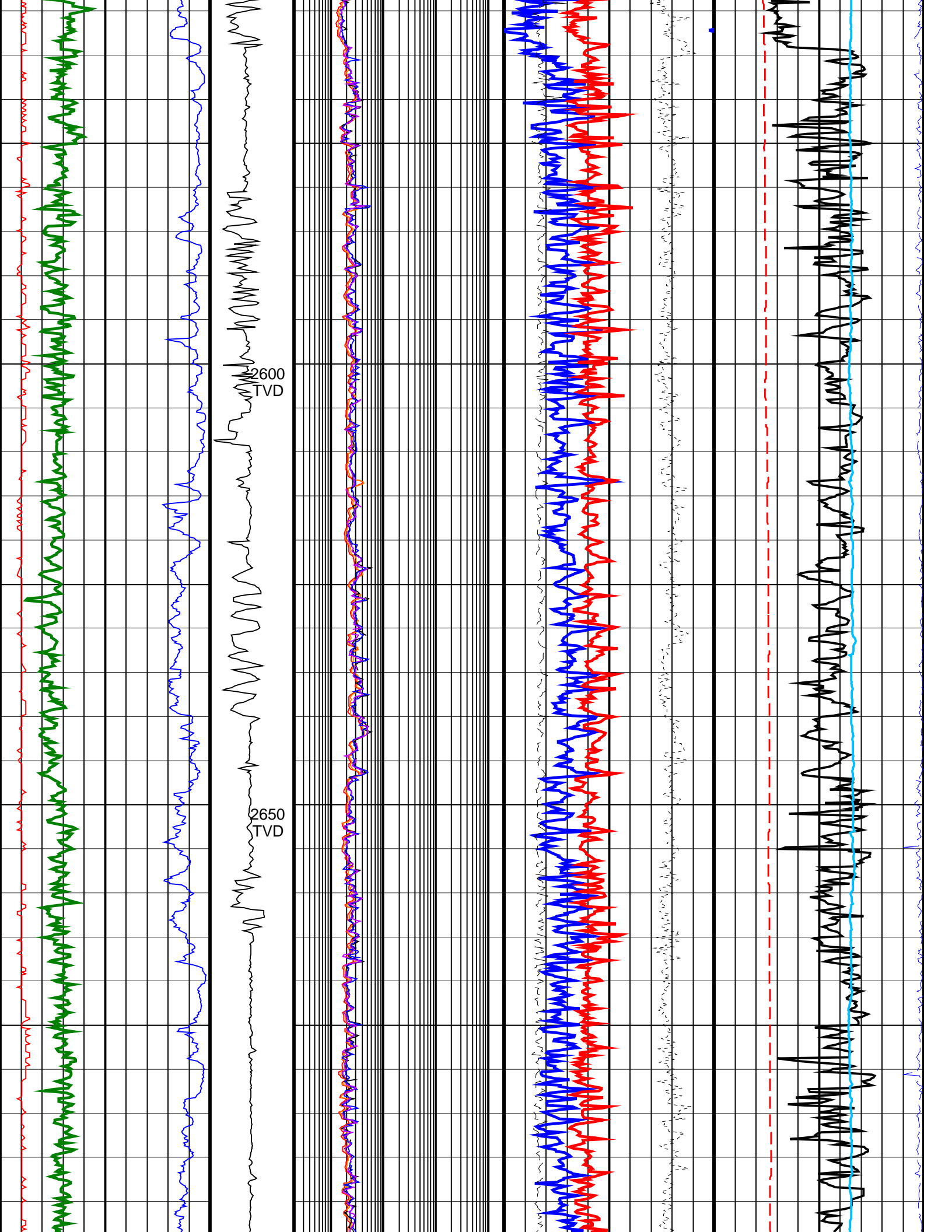
Format: ECO-SON-GVR\_500TVD\_RT

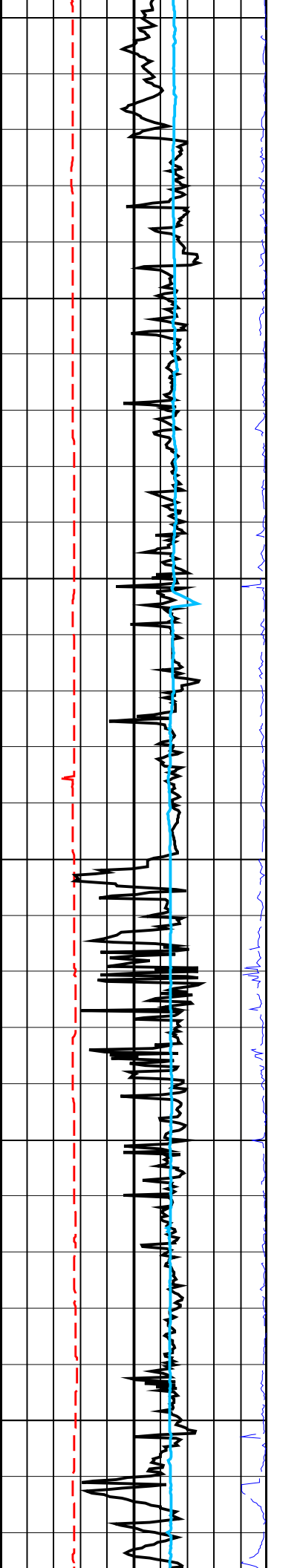
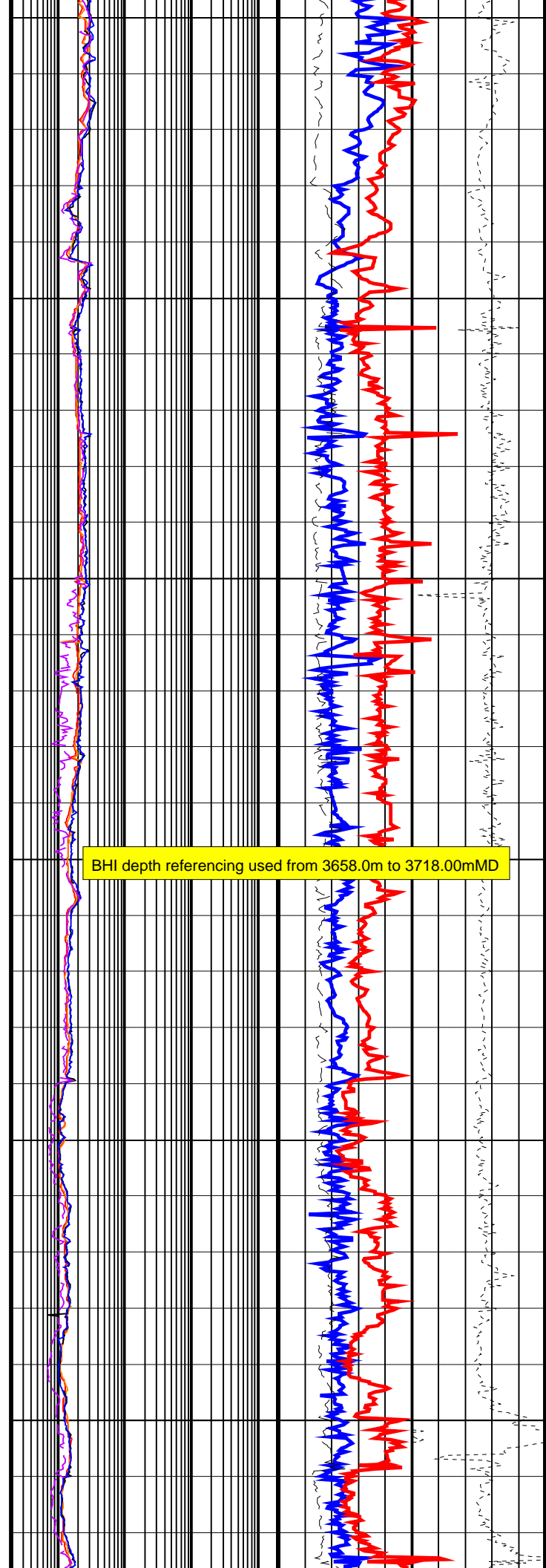
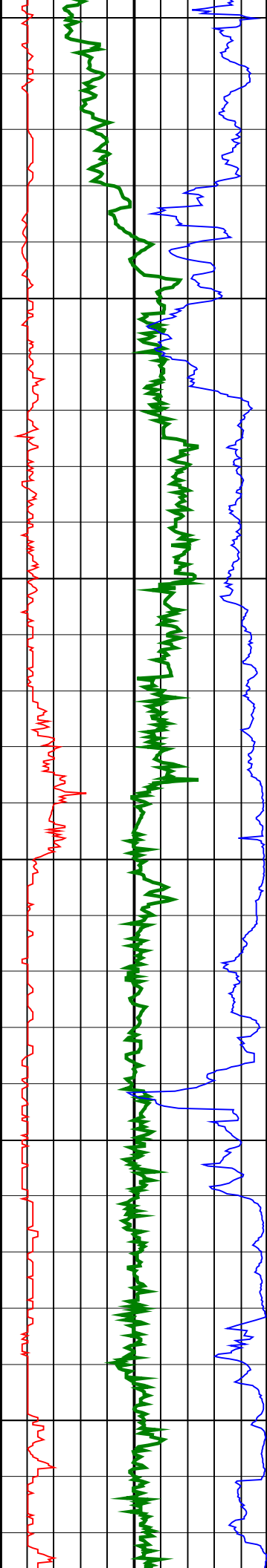
Vertical Scale: 1:500

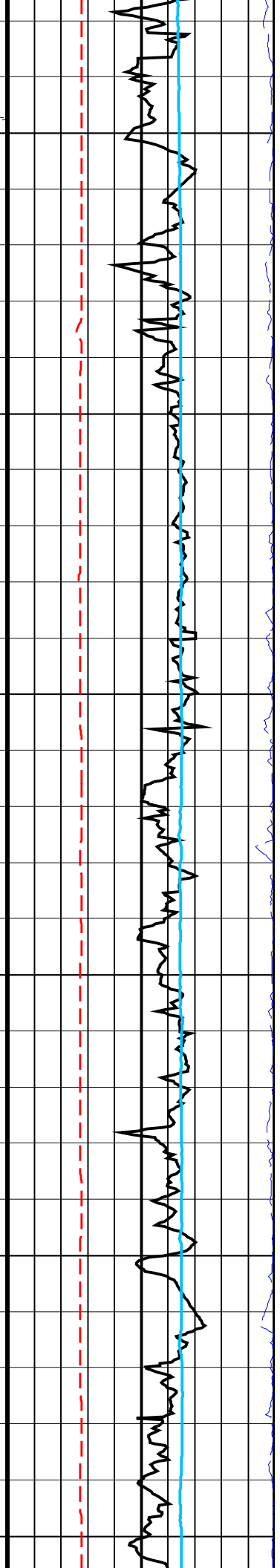
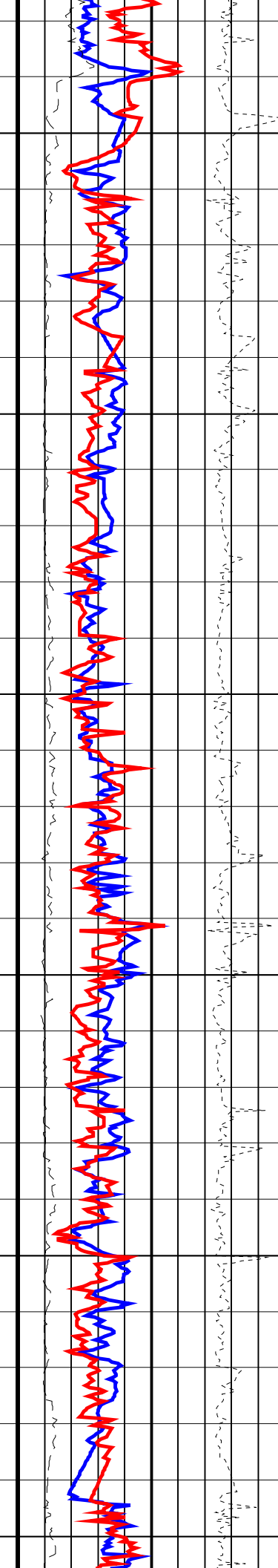
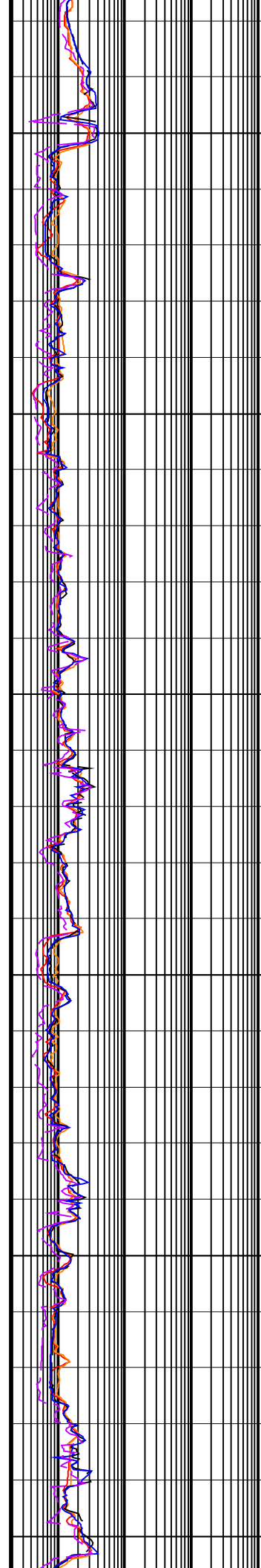
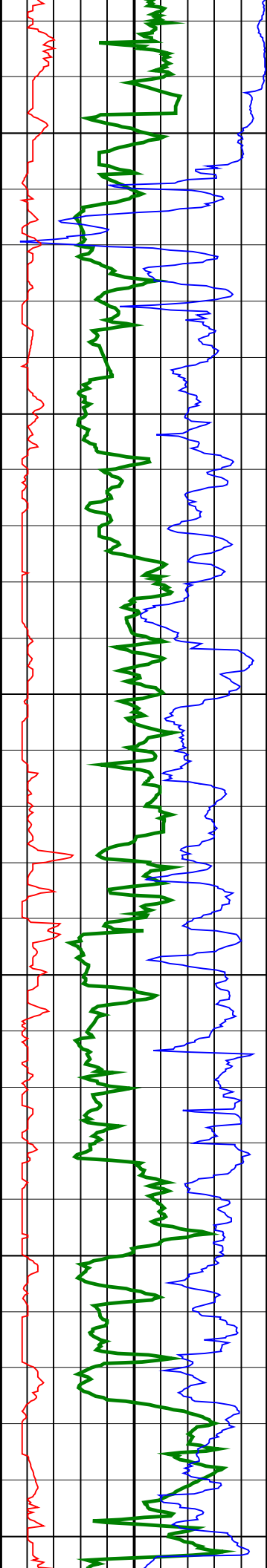
Graphics File Created: 08-Jan-2009 09:03

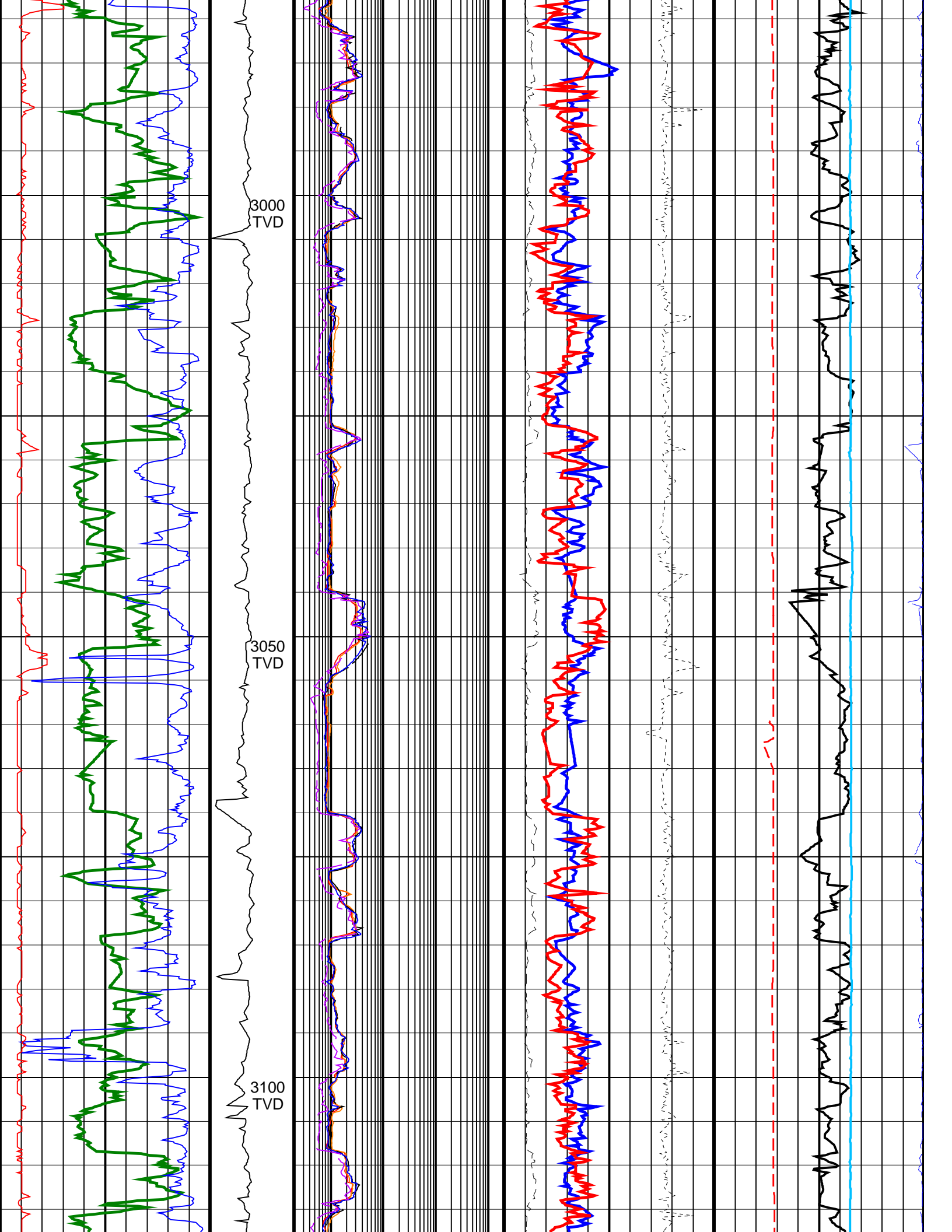
		<b>Shallow Button Resistivity, Real-Time (RES_BS_RT)</b> 0.2 (OHMM) 2000				<b>Equivalent Circulating Density, Real-Time (ECD_ECO_RT)</b> 0 (G/C3) 2	
		<b>Deep Button Resistivity, Real-Time (RES_BD_RT)</b> 0.2 (OHMM) 2000					
<b>Ultrasonic Caliper, Average Diameter, Real-Time, Recomputed at Surface (UCAV_ECO_RT)</b> 8 (IN) 13		<b>Ring Resistivity, Real-Time (RES_RING_RT)</b> 0.2 (OHMM) 2000		<b>Photoelectric Factor, Bottom, Real-Time, Computed Downhole (PEB_DH_ECO_RT)</b> 0 (----) 10	<b>Bulk Density Correction, Bottom, Real-Time Computed Downhole (DRHB_DH_ECO_RT)</b> -0.25 (G/C3) 0.25	<b>Delta-T Compressional, Real-Time (DTCO_RT)</b> 40 (US/F) 140	
<b>Gamma Ray, Average, Real-Time (GRMA_ECO_RT)</b> 0 (GAPI) 200		<b>ARC Phase Shift Resistivity 40 inch at 2 MHz, Real-Time (P40H_ECO_RT)</b> 0.2 (OHMM) 2000		<b>Bulk Density, Bottom, Real-Time, Computed Downhole (ROBB_DH_ECO_RT)</b> 1.95 (G/C3) 2.95		<b>Coherence at Compressional Peak, Real-Time (CHCO_RT)</b> -9 (----) 1	
<b>ROP*5 (ROP5)</b> 200 (M/HR) 0		<b>MWD Collar RPM (CRPM_RT) (RPM)</b> 0 400	<b>ARC Phase Shift Resistivity 16 inch at 2 MHz, Real-Time (P16H_ECO_RT)</b> 0.2 (OHMM) 2000	<b>Best Thermal Neutron Porosity, Average, Real-Time (BPHI_ECO_RT)</b> 45 (PU) -15		<b>Downhole Annulus Temperature, Real Time, Computed Downhole (DHAT_DH_ECO_RT)</b> 0 (DEGC) 200	

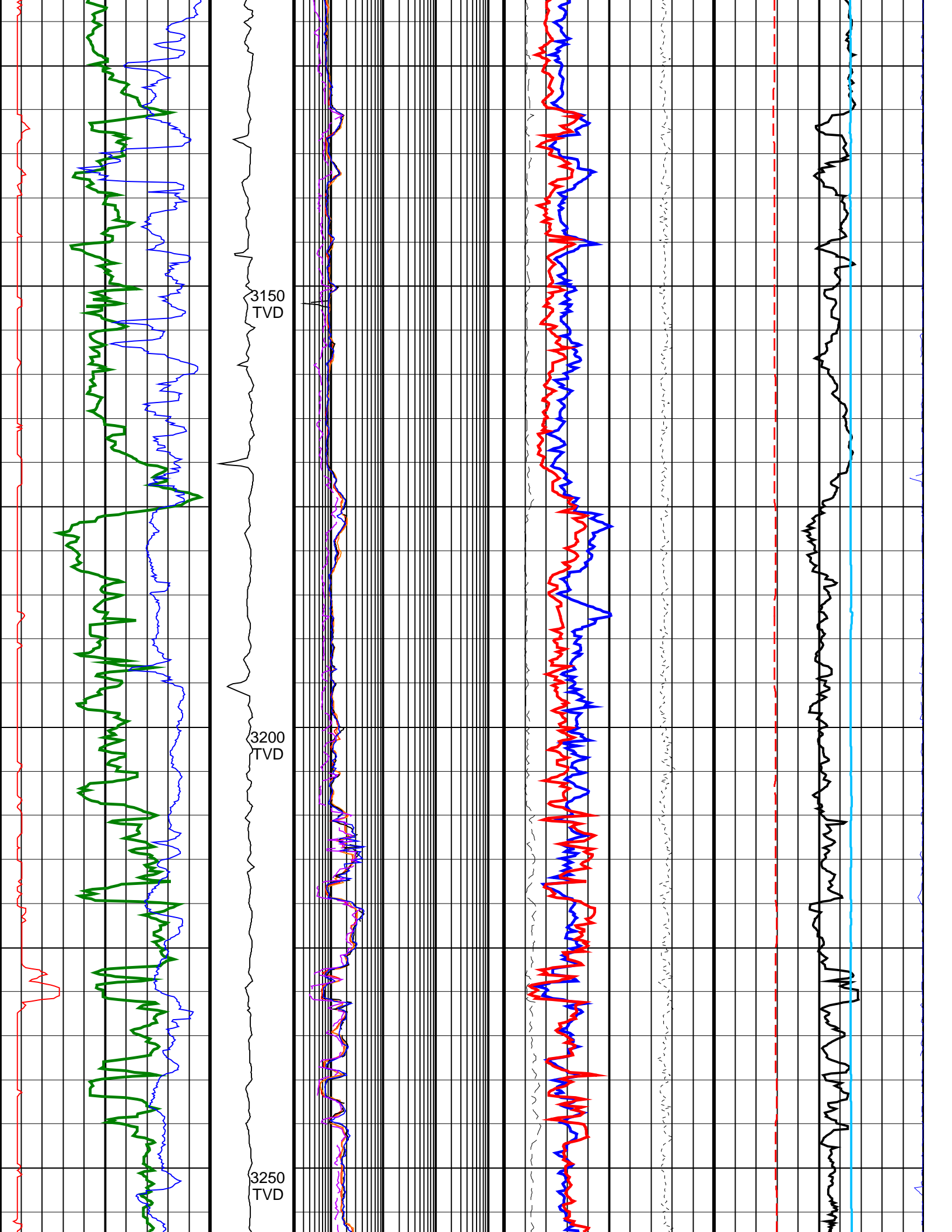


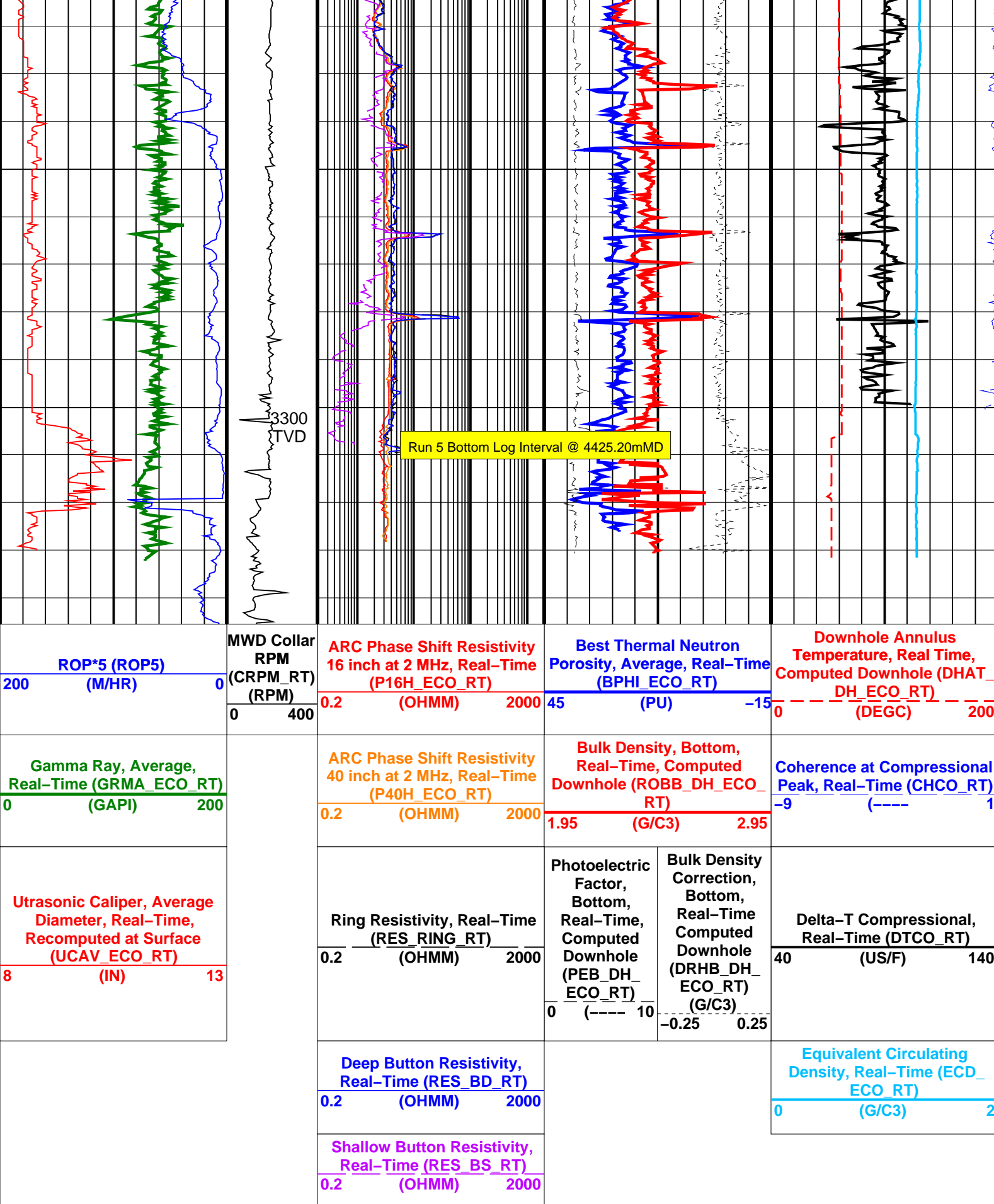












IDEAL Version: ID13\_OC\_08

IDF