



DRILLING LOG



FROM : (m) 600

TO : (m) 3950

SCALE : 1/ 1000

Well Name : Cobia A21A

Company : ESSO AUSTRALIA LTD

Country : AUSTRALIA

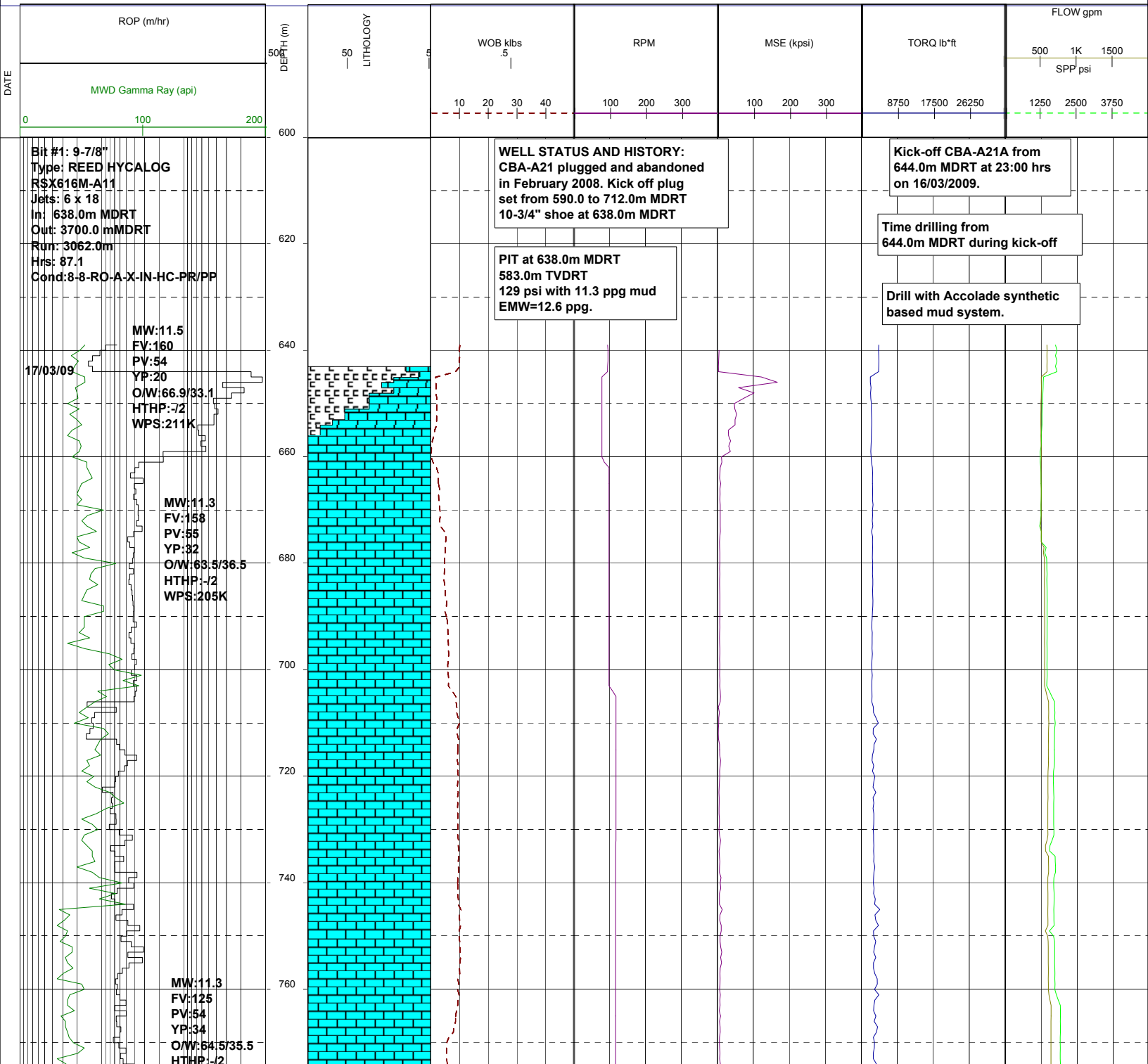
RT-MSL (m) : 41.0

Final TD: 3923.0 mMDRT

RT-SEABED (m): 120.0

Final TVD:

Generated by geoNEXT Package

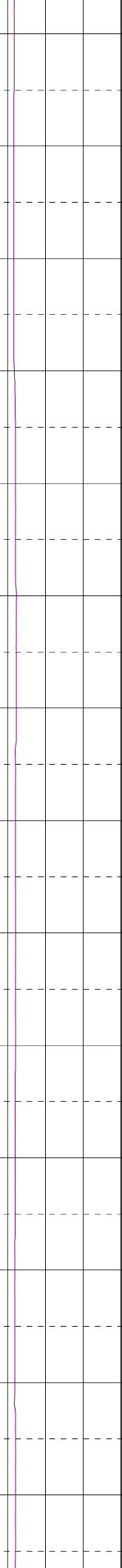
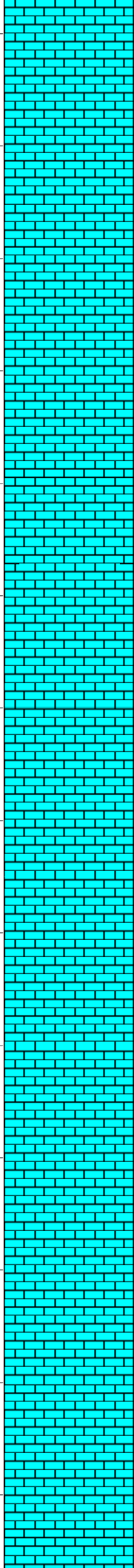


WPS:211K

780
800
820
840
860
880
900
920
940
960
980
1000
1020
1040

18/03/09

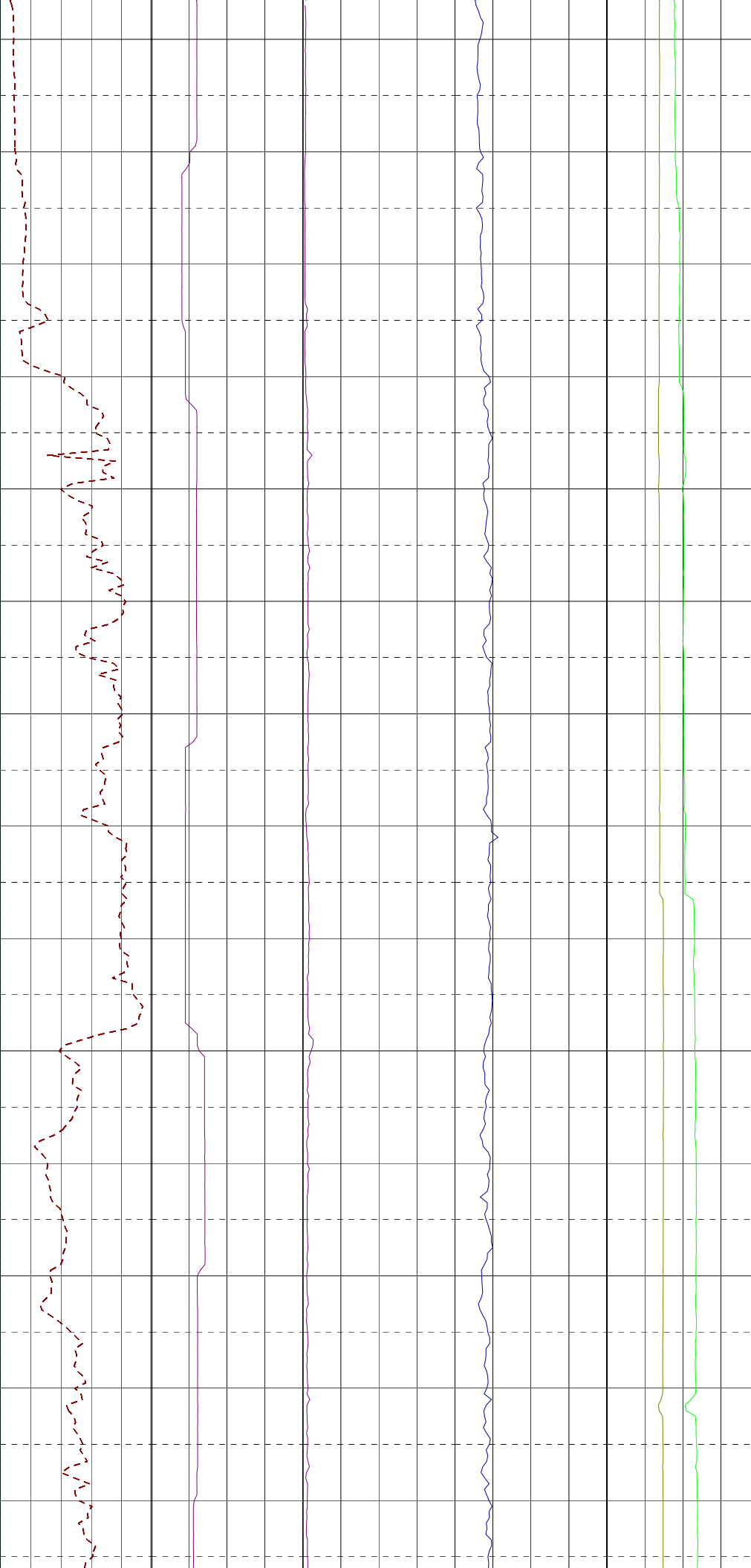
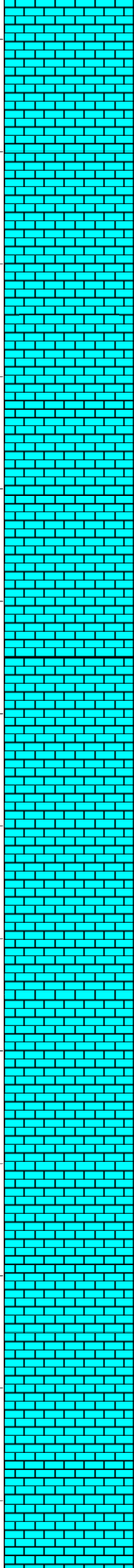
MW:11.4
FV:108
PV:55
YP:31
O/W:65.1/34.9
HTHP: /2
WPS:212K

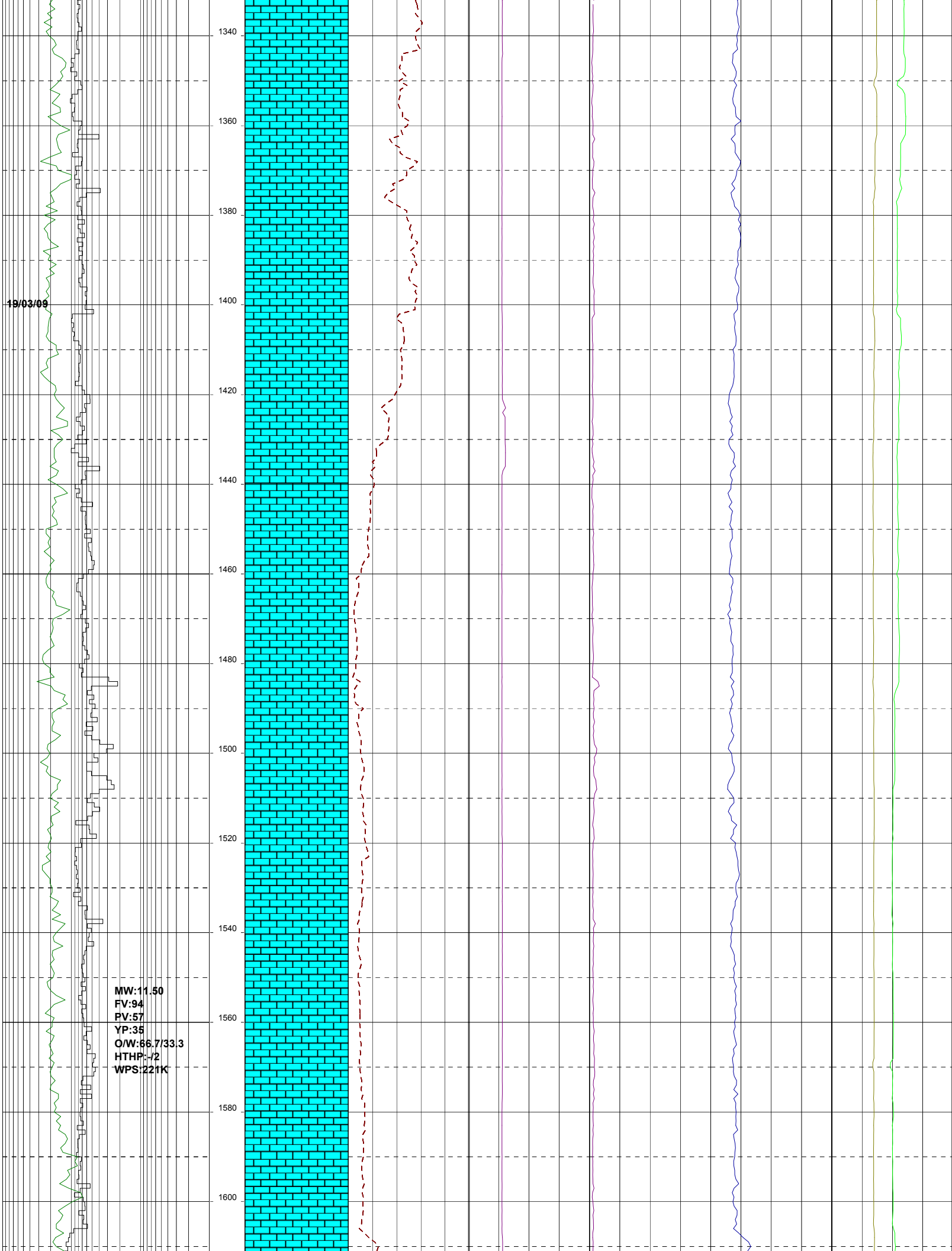


MW:11.45
FV:98
PV:52
YP:28
O/W:63.6/36.4
HTHP:-/2
WPS:203K

MW:11.45
FV:89
PV:51
YP:26
O/W:67.2/32.8
HTHP:-/2
WPS:212K

1060
1080
1100
1120
1140
1160
1180
1200
1220
1240
1260
1280
1300
1320



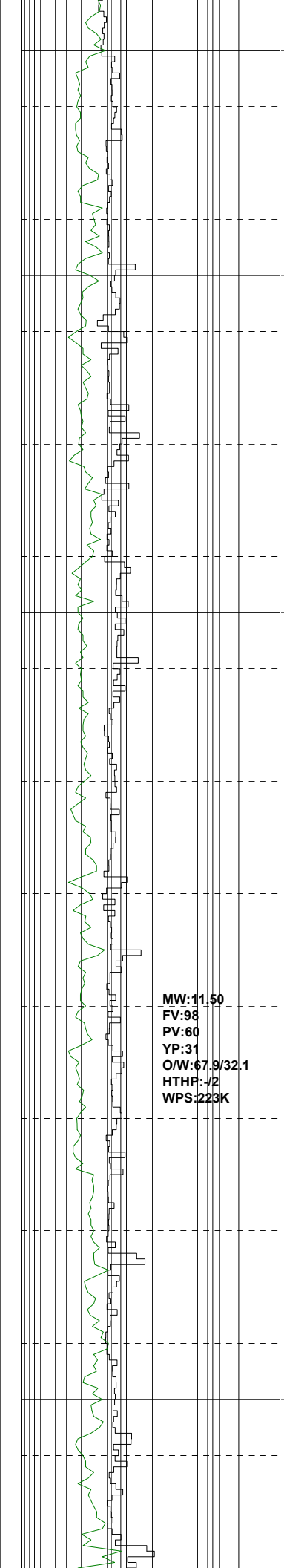
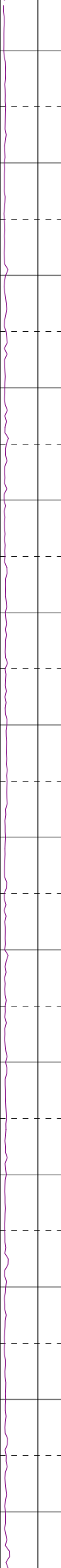
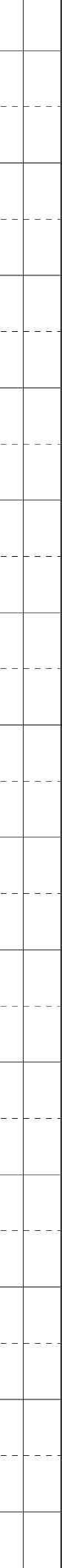
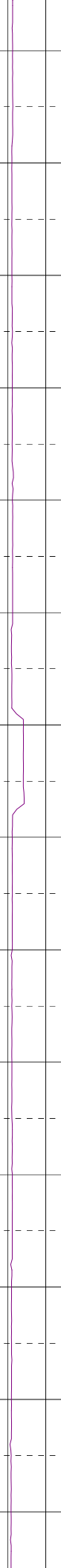
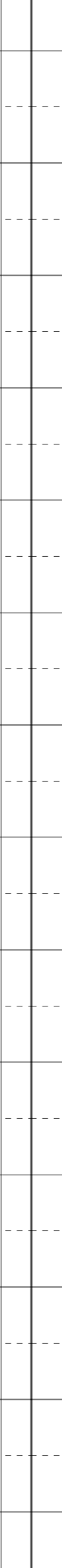
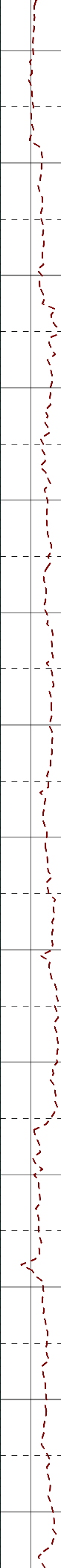
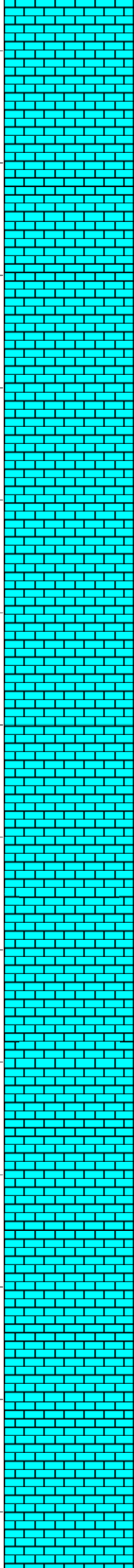


19/03/09

MW:11.50
FV:94
PV:57
YP:35
O/W:66.7/33.3
HTHP:-/2
WPS:221K

MW:11.50
FV:98
PV:60
YP:31
O/W:67.9/32.1
HTHP:1/2
WPS:223K

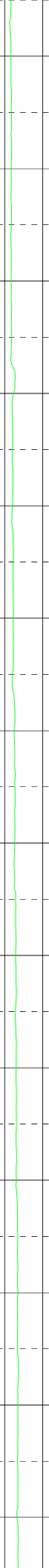
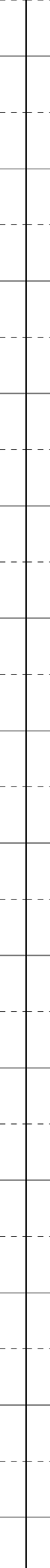
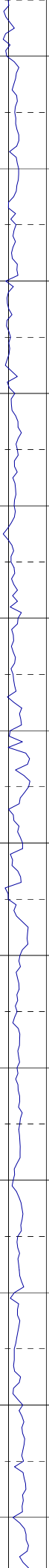
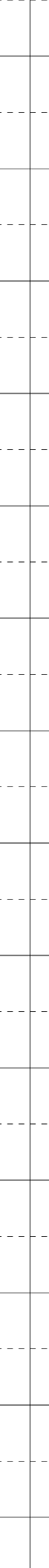
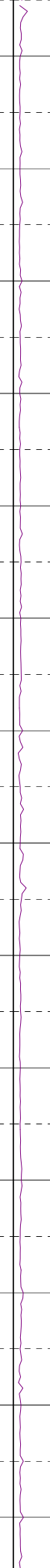
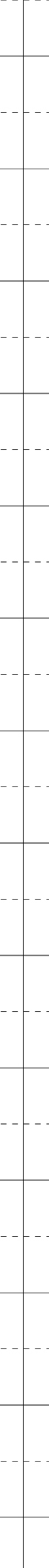
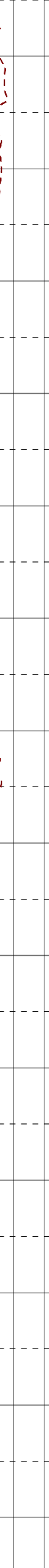
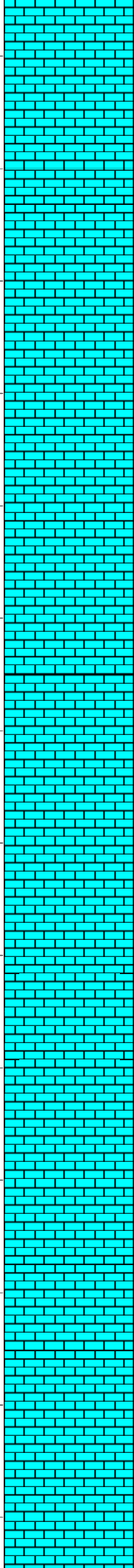
1620
1640
1660
1680
1700
1720
1740
1760
1780
1800
1820
1840
1860
1880

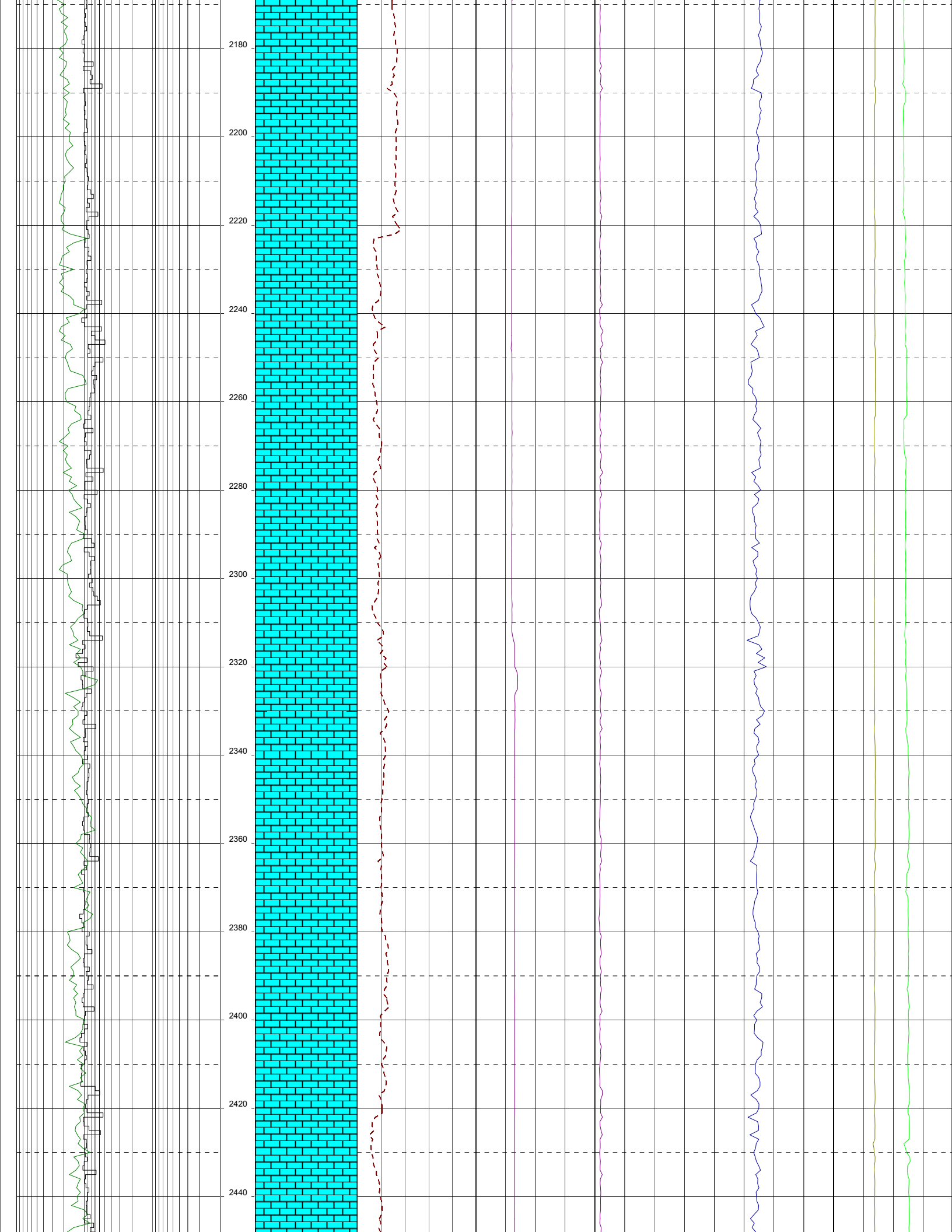


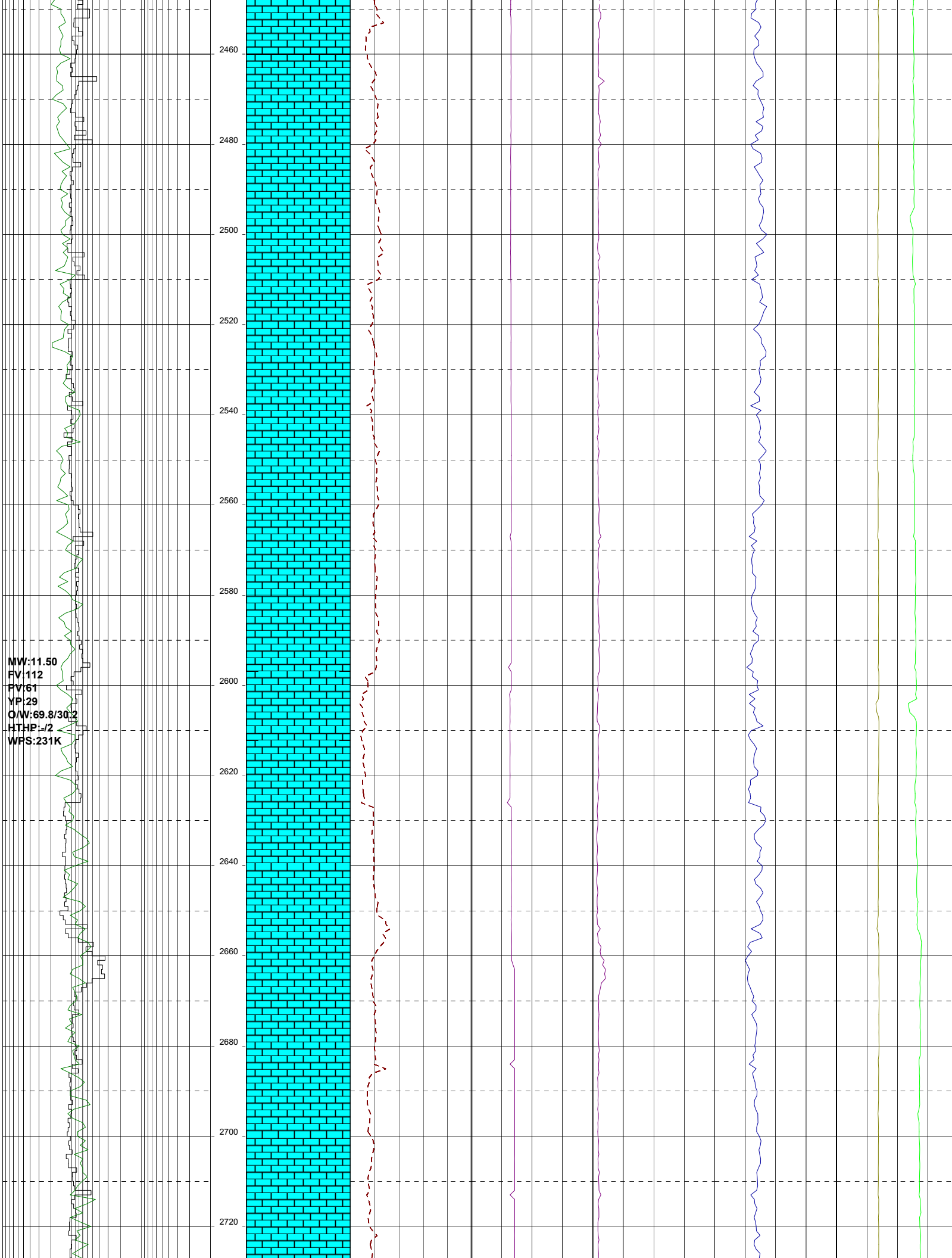
MW:11.45
FV:105
PV:62
YP:32
O/W:68.1/31.9
HTHP:1/2
WPS:224K

20/03/09

1900
1920
1940
1960
1980
2000
2020
2040
2060
2080
2100
2120
2140
2160

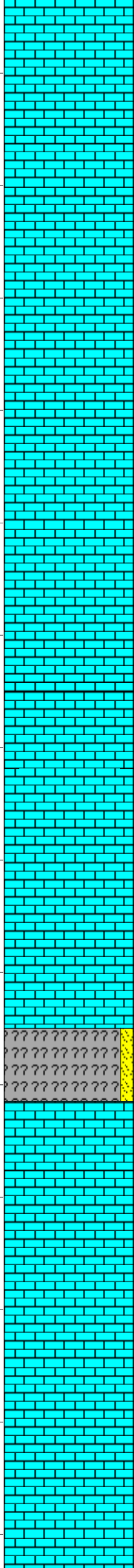
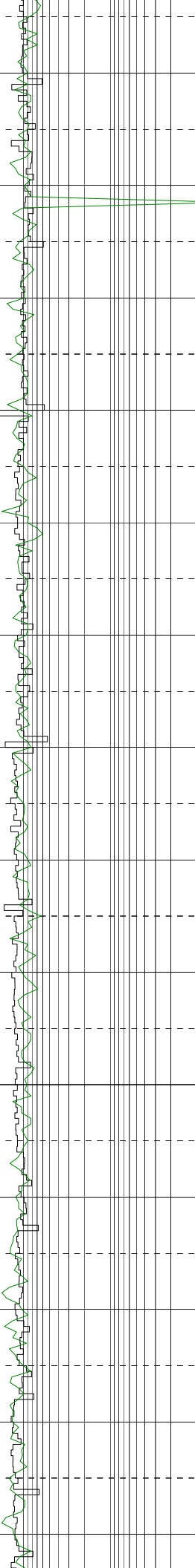


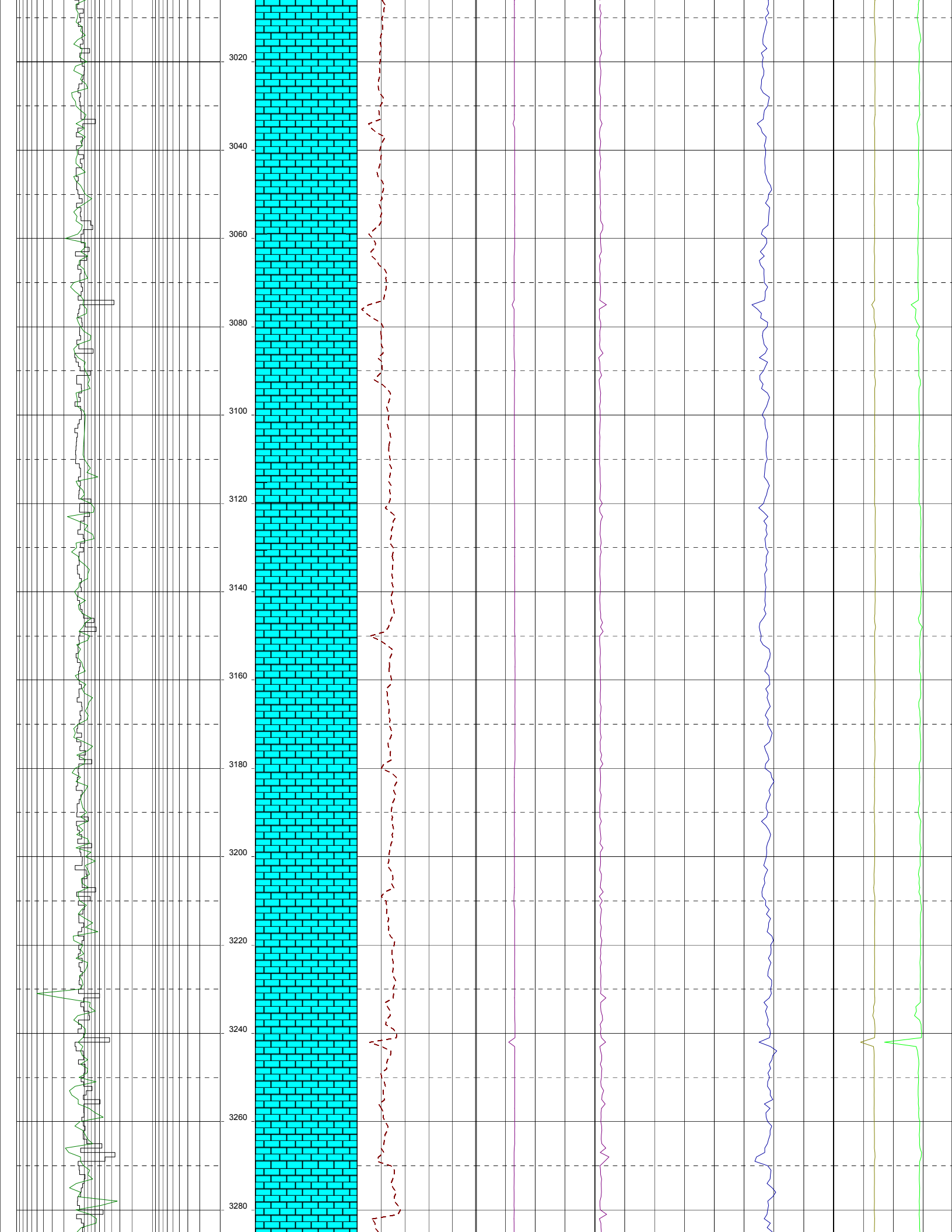




21/03/09

2740
2760
2780
2800
2820
2840
2860
2880
2900
2920
2940
2960
2980
3000

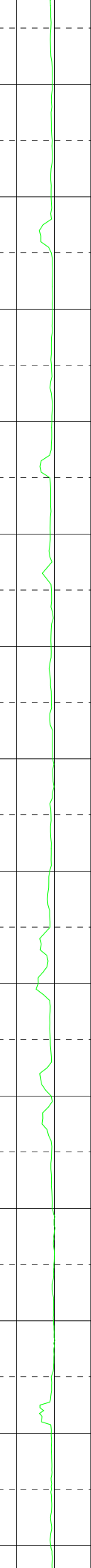
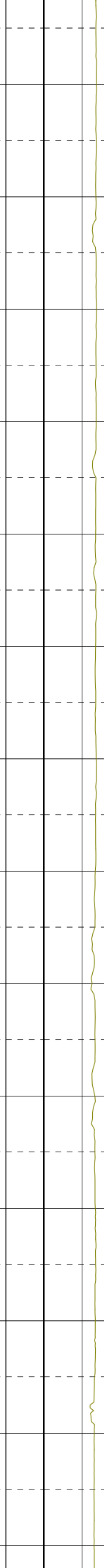
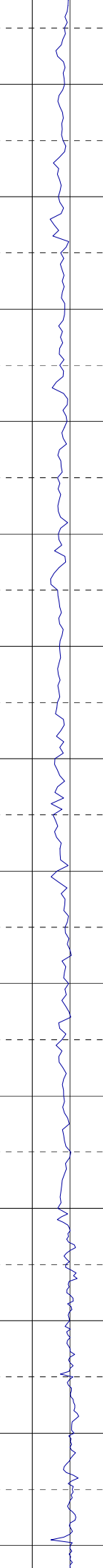
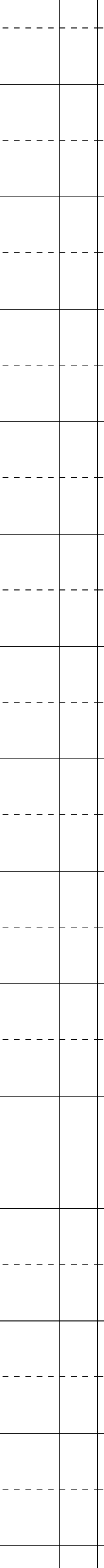
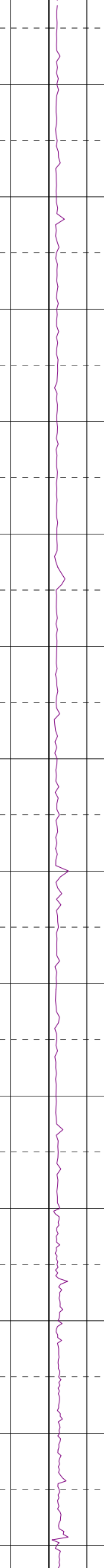
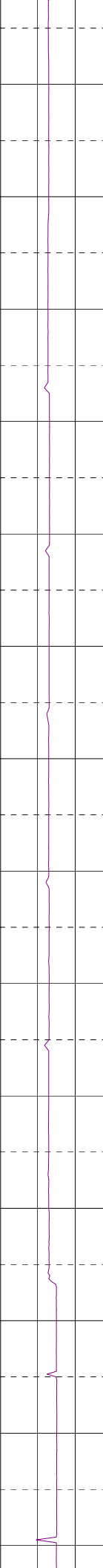
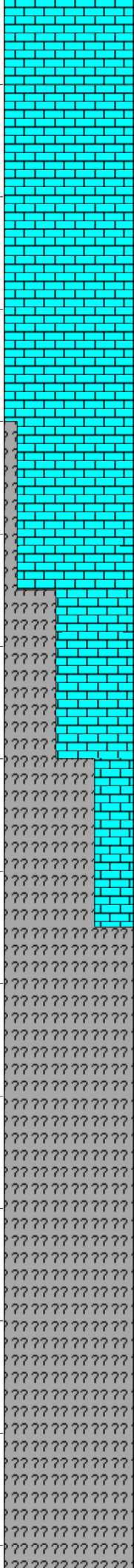




3300
3320
3340
3360
3380
3400
3420
3440
3460
3480
3500
3520
3540
3560

MW:11.5
FV:124
PV:75
YP:33
O/W:54.5/23.5
HTHP:-/3
WPS:236K

22/03/09



3580
3600
3620
3640
3660
3680
3700
3720
3740
3760
3780
3800
3820
3840

MW:11.7
FV:135
PV:62
YP:36
O/W:54.5/22
HTHP:-J2
WPS:248K

23/03/09
MW:11.9
FV:192
PV:77
YP:44
O/W:53.0/21.0
HTHP:-J3
WPS:263K

MW:11.8
FV:133
PV:80
YP:44
O/W:72.0/28.0
HTHP:-J2
WPS:263K

Bit#2-9 7/8"
Type:Reed Hycalog RSX616M-A11
Jets: 6 x 18
In: 3700.0m MDRT
Out:3923.0 mMDRT
Run: 223 m
Hrs: 6.3
Cond:

