



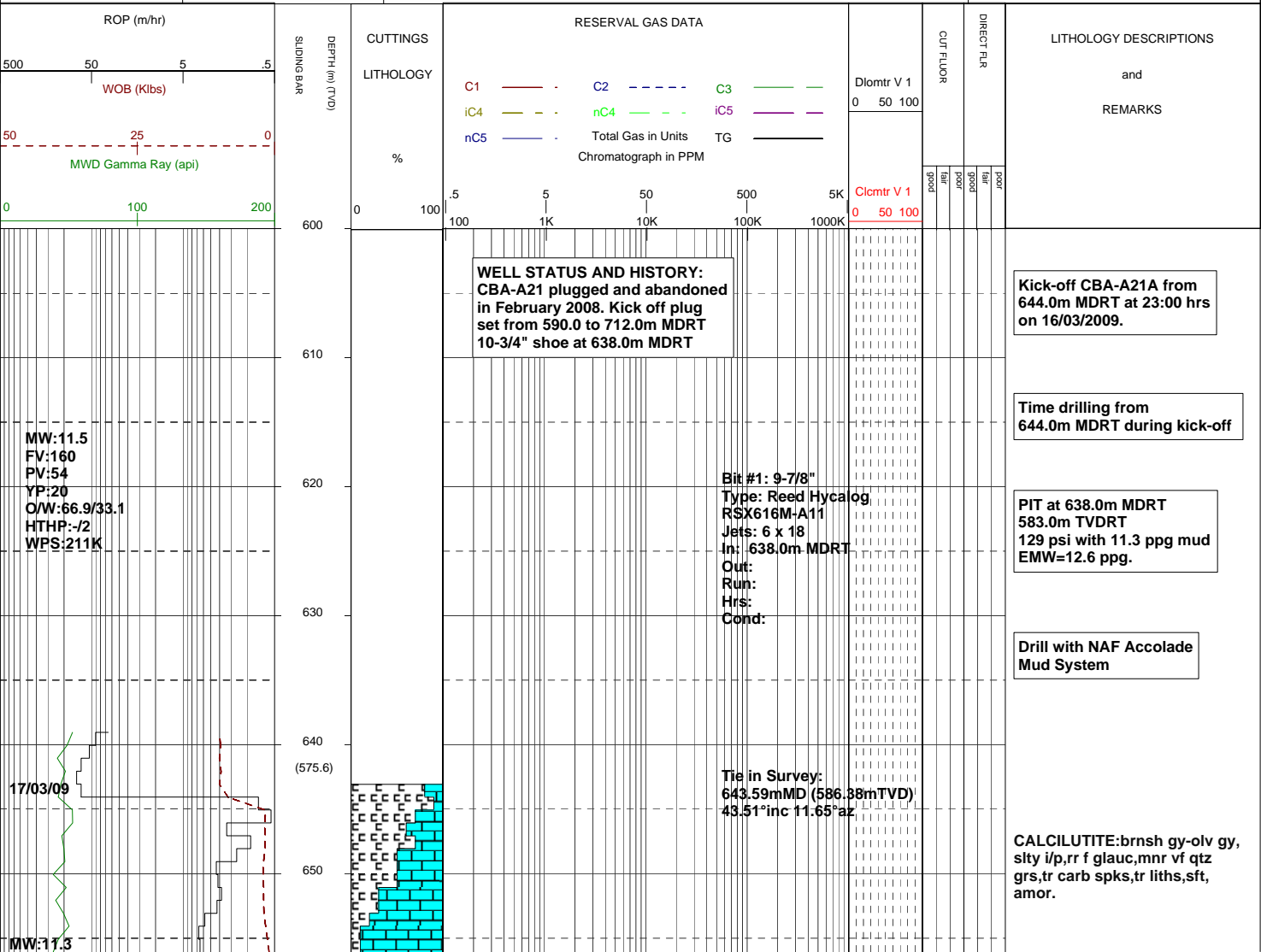
MASTERLOG

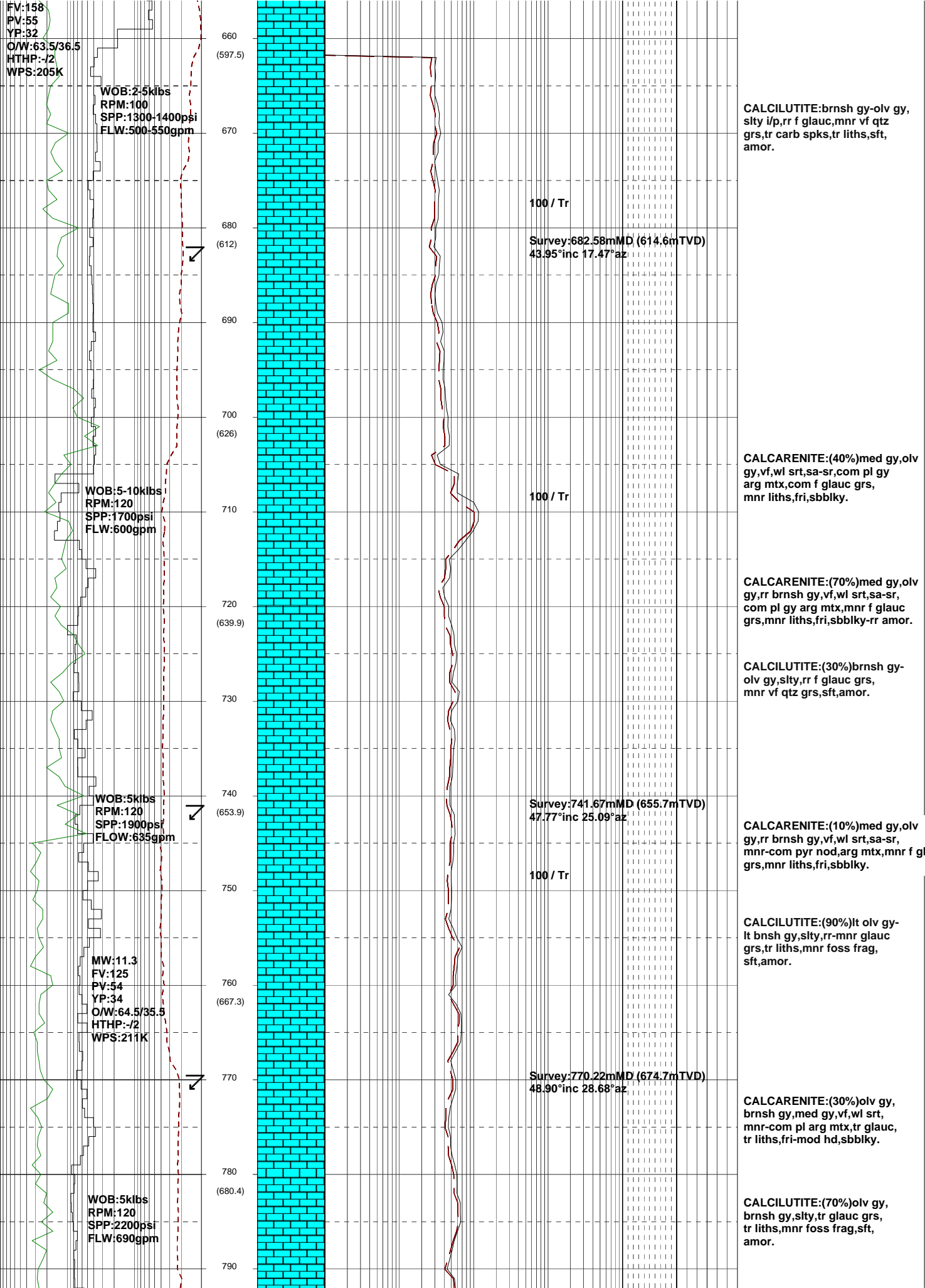
Cobia A21A



GENERAL	SURFACE POSITION	HOLE / CASING INFO	DATE / DEPTH	ENGINEERS
Country : AUSTRALIA	Longitude :148°18'33.005" E	9-7/8" Hole to	Kick off Date: 16/03/2009	Mark Smith
Permit : VIC / L5	Latitude : 38°26'57.568" S		Total Depth Date:	Phil Rady
Field : COBIA	MGA Co-ord X :614238.880 mE	10-3/4" Surface Csg at 638.0m MDRT	Total Depth:	Colin Chadwick
Basin : GIPPSLAND	MGA Co-ord Y : 5743517.940 mN		True Vertical Depth:	Adam Sullivan
Well Type :DEVELOPMENT	RT to MSL : 41.0 m	7" Production Csg at	Log Scale : 1/ 500	Kepa O'Reilly
Rig Name : Nabors 175	RT to Sea Bed : 120.0 m			

ABBREVIATIONS	LITHOLOGY LEGEND	ENGINEERING LEGEND
MW Mud Weight	Claystone	Casing shoe
FV Funnel Viscosity	Siltstone	Casing Top
PV Plastic Viscosity	Fine sandstone	Survey
YP Yield Point	Shale	Sidewall core
OW Oil/Water Ratio	Conglomerate	Core
WPS Aq. Phase Salinity		
HPHT Fluid Loss		
Cl Chlorides		
Incl Inclination		
Az Azimuth		
WOB Weight on Bit (klbs)	Marl	RFT
RPM Rotations Per Min	Limestone	MDT
FLW Flow Rate (gpm)	Dolomite	Mud gain
SPP Pump Pressure (psi)	Coal-lignite	Mud loss
RR Re-Run Bit	Volcanic cinder, tuf	
TG Trip Gas		
CG Connection Gas		
BG Background Gas		
DGP Drilled Gas Peak		
MM Mud Motor		
	Bryozoa	
	Radiolariae	
	Echinoids	
	Foraminiferae	
	Cement	
	Glauconite	
	Pyrite	





FV:158
PV:55
YP:32
O/W:63.5/36.5
HTHP:-/2
WPS:205K

WOB:2.5klbs
RPM:100
SPP:1300-1400psi
FLW:500-550gpm

660
(597.5)

CALCILUTITE:brnsh gy-olv gy,
silty i/p,rr f glauc,mnr vf qtz
grs,tr carb spks,tr liths,sft,
amor.

100 / Tr

Survey:682.58mMD (614.6mTVD)
43.95°inc 17.47°az

680
(612)

690
(626)

CALCARENITE:(40%)med gy,olv
gy,vf,wl srt,sa-sr,com pl gy
arg mtx,com f glauc grs,
mnr liths,fri,sbblky.

100 / Tr

WOB:5-10klbs
RPM:120
SPP:1700psi
FLW:600gpm

710

CALCARENITE:(70%)med gy,olv
gy,rr brnsh gy,vf,wl srt,sa-sr,
com pl gy arg mtx,mnr f glauc
grs,mnr liths,fri,sbblky-rr amor.

720
(639.9)

CALCILUTITE:(30%)brnsh gy-
olv gy,silty,rr f glauc grs,
mnr vf qtz grs,sft,amor.

730

WOB:5klbs
RPM:120
SPP:1900psi
FLOW:635gpm

740
(653.9)

Survey:741.67mMD (655.7mTVD)
47.77°inc 25.09°az

CALCARENITE:(10%)med gy,olv
gy,rr brnsh gy,vf,wl srt,sa-sr,
mnr-com pyr nod,arg mtx,mnr f g
grs,mnr liths,fri,sbblky.

100 / Tr

750

CALCILUTITE:(90%)lt olv gy-
lt bnsh gy,silty,rr-mnr glauc
grs,tr liths,mnr foss frag,
sft,amor.

MW:11.3
FV:125
PV:54
YP:34
O/W:64.5/35.5
HTHP:-/2
WPS:211K

760
(667.3)

Survey:770.22mMD (674.7mTVD)
48.90°inc 28.68°az

CALCARENITE:(30%)olv gy,
brnsh gy,med gy,vf,wl srt,
mnr-com pl arg mtx,tr glauc,
tr liths,fri-mod hd,sbblky.

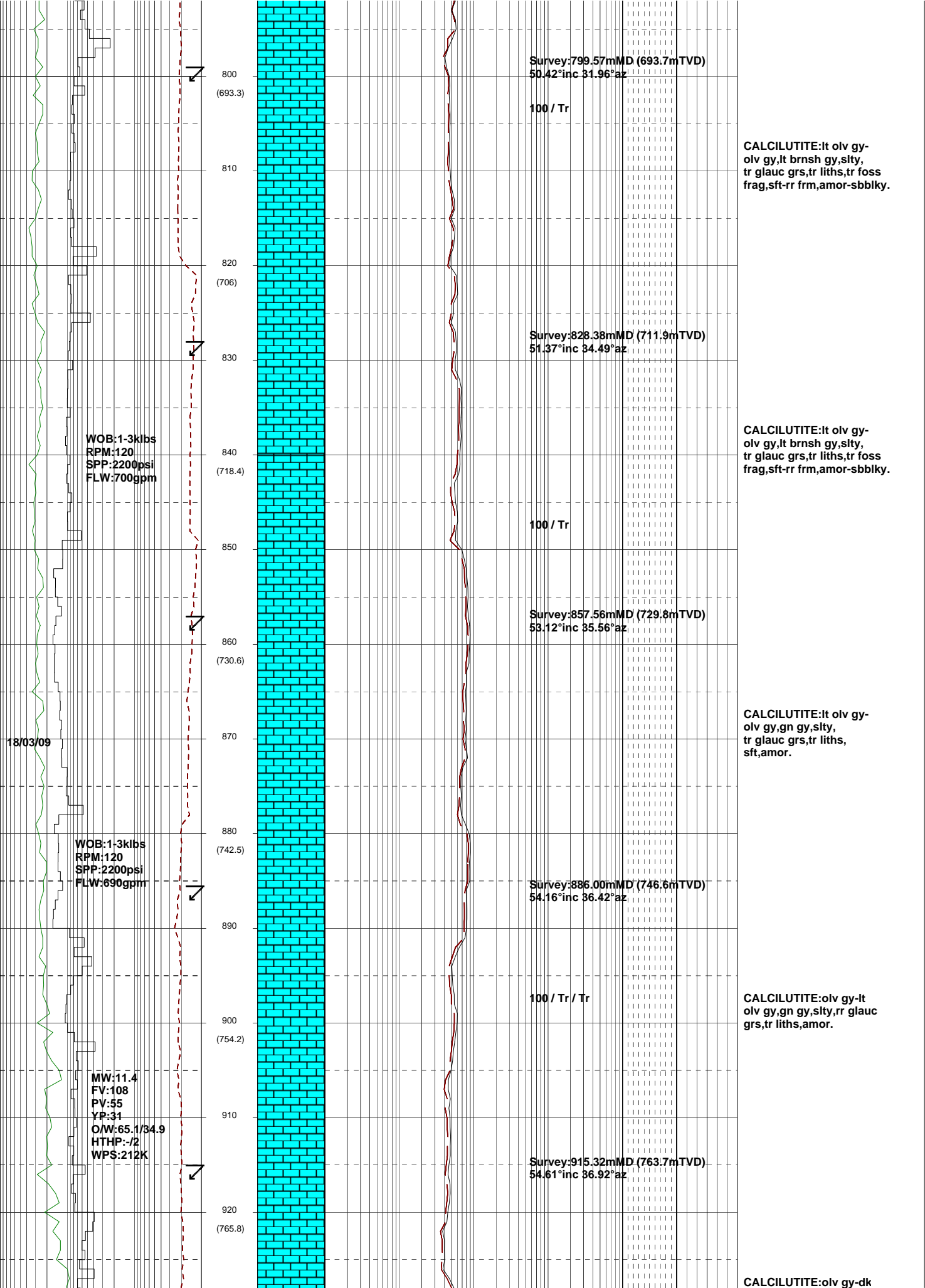
770

780
(680.4)

WOB:5klbs
RPM:120
SPP:2200psi
FLW:690gpm

CALCILUTITE:(70%)olv gy,
brnsh gy,silty,tr glauc grs,
tr liths,mnr foss frag,sft,
amor.

790



CALCILUTITE:lt olv gy-olv gy,lt brnsh gy,slty, tr glauc grs,tr liths,tr foss frag,sft-rr frm,amor-sbbkly.

CALCILUTITE:lt olv gy-olv gy,lt brnsh gy,slty, tr glauc grs,tr liths,tr foss frag,sft-rr frm,amor-sbbkly.

CALCILUTITE:lt olv gy-olv gy,gn gy,slty, tr glauc grs,tr liths, sft,amor.

CALCILUTITE:olv gy-lt olv gy,gn gy,slty,rr glauc grs,tr liths,amor.

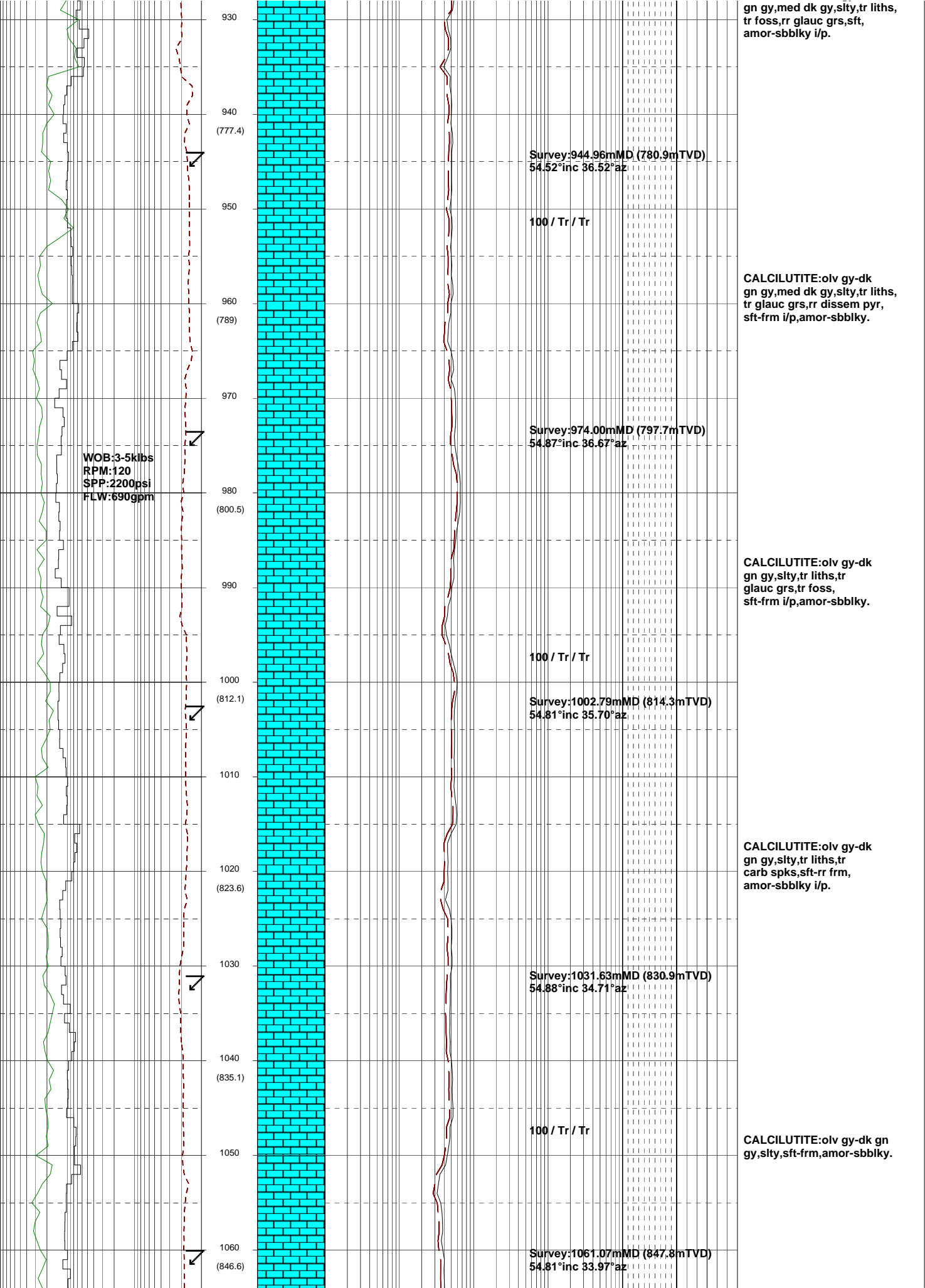
CALCILUTITE:olv gy-dk

WOB:1-3klbs
RPM:120
SPP:2200psi
FLW:700gpm

WOB:1-3klbs
RPM:120
SPP:2200psi
FLW:690gpm

MW:11.4
FV:108
PV:55
YP:31
O/W:65.1/34.9
HTHP:-/2
WPS:212K

18/03/09



gn gy,med dk gy,silty,tr liths,
tr foss,rr glauc grs,sft,
amor-sbbiky i/p.

Survey:944.96mMD (780.9mTVD)
54.52°inc 36.52°az

100 / Tr / Tr

CALCILUTITE:olv gy-dk
gn gy,med dk gy,silty,tr liths,
tr glauc grs,rr dissem pyr,
sft-frm i/p,amor-sbbiky.

Survey:974.00mMD (797.7mTVD)
54.87°inc 36.67°az

WOB:3-5klbs
RPM:120
SPP:2200psi
FLW:690gpm

100 / Tr / Tr

CALCILUTITE:olv gy-dk
gn gy,silty,tr liths,tr
glauc grs,tr foss,
sft-frm i/p,amor-sbbiky.

Survey:1002.79mMD (814.3mTVD)
54.81°inc 35.70°az

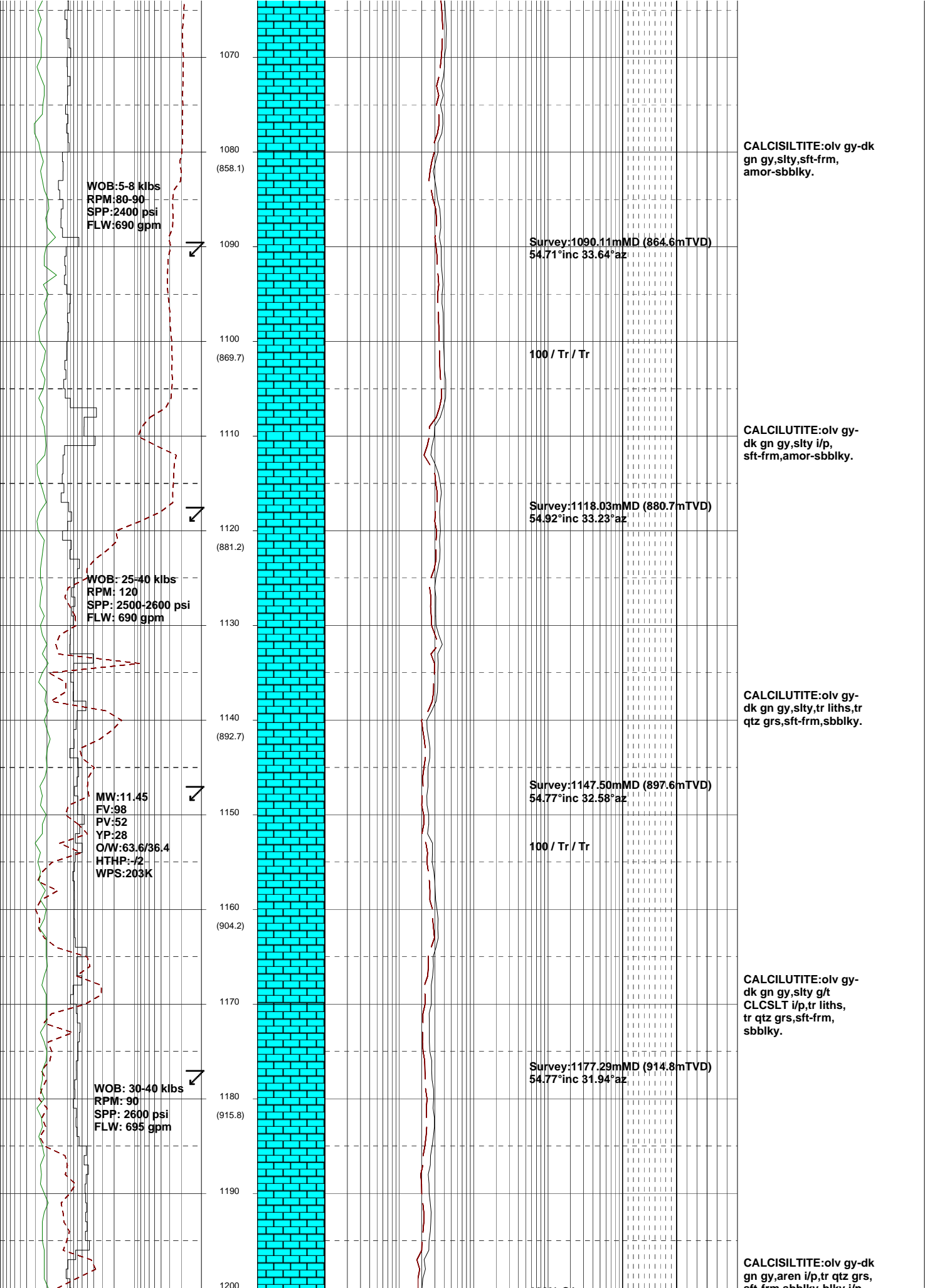
CALCILUTITE:olv gy-dk
gn gy,silty,tr liths,tr
carb spks,sft-rr frm,
amor-sbbiky i/p.

Survey:1031.63mMD (830.9mTVD)
54.88°inc 34.71°az

100 / Tr / Tr

CALCILUTITE:olv gy-dk gn
gy,silty,sft-frm,amor-sbbiky.

Survey:1061.07mMD (847.8mTVD)
54.81°inc 33.97°az



1070
1080
(858.1)
1090
1100
(869.7)
1110
1120
(881.2)
1130
1140
(892.7)
1150
1160
(904.2)
1170
1180
(915.8)
1190
1200

WOB: 5-8 klbs
RPM: 80-90
SPP: 2400 psi
FLW: 690 gpm

WOB: 25-40 klbs
RPM: 120
SPP: 2500-2600 psi
FLW: 690 gpm

MW: 11.45
FV: 98
PV: 52
YP: 28
O/W: 63.6/36.4
HTHP: -12
WPS: 203K

WOB: 30-40 klbs
RPM: 90
SPP: 2600 psi
FLW: 695 gpm

Survey: 1090.11m MD (864.6m TVD)
54.71° inc 33.64° az

100 / Tr / Tr

Survey: 1118.03m MD (880.7m TVD)
54.92° inc 33.23° az

Survey: 1147.50m MD (897.6m TVD)
54.77° inc 32.58° az

100 / Tr / Tr

Survey: 1177.29m MD (914.8m TVD)
54.77° inc 31.94° az

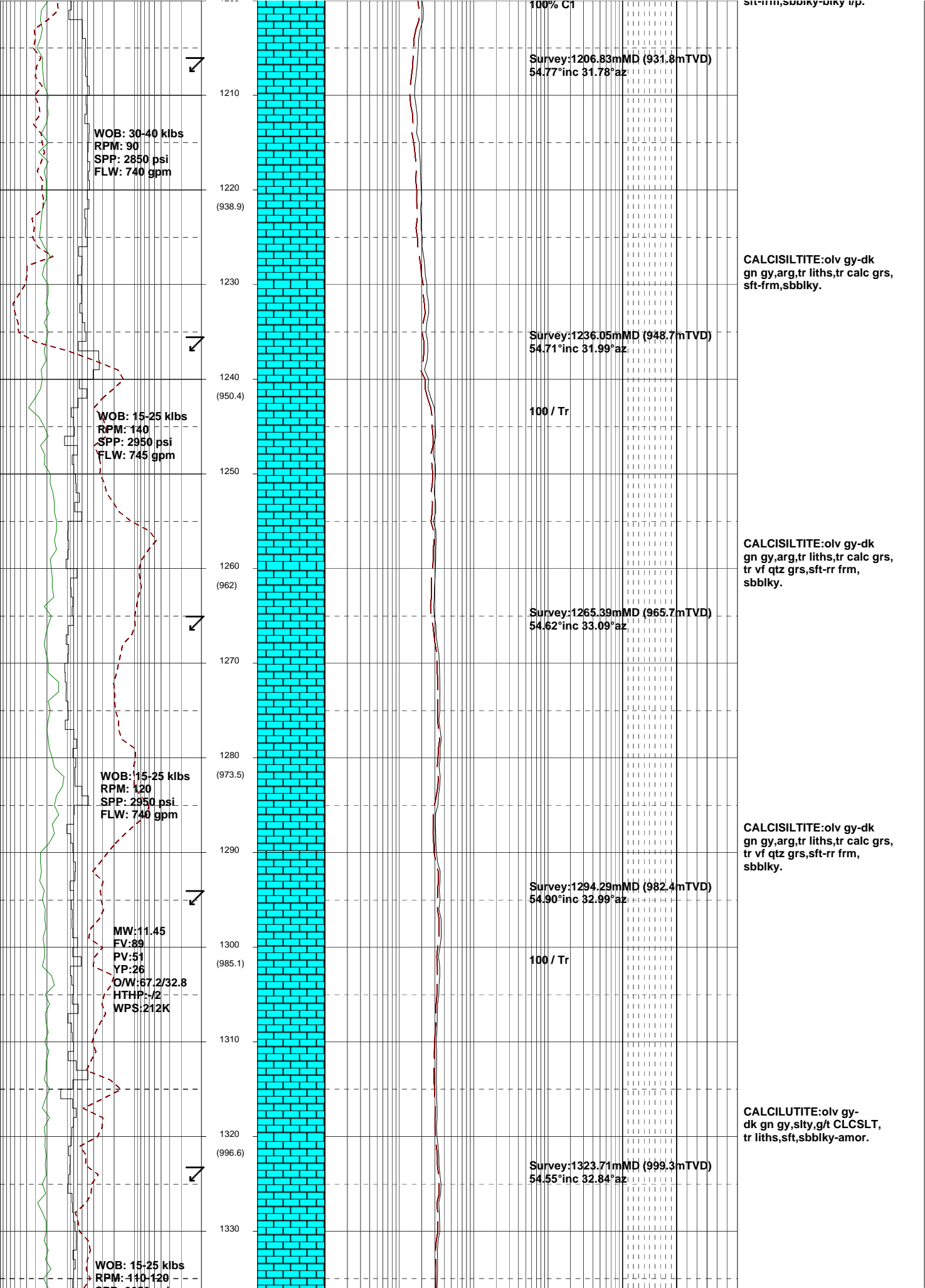
CALCISILTITE: olv gy-dk
gn gy, slty, sft frm,
amor-sbbkly.

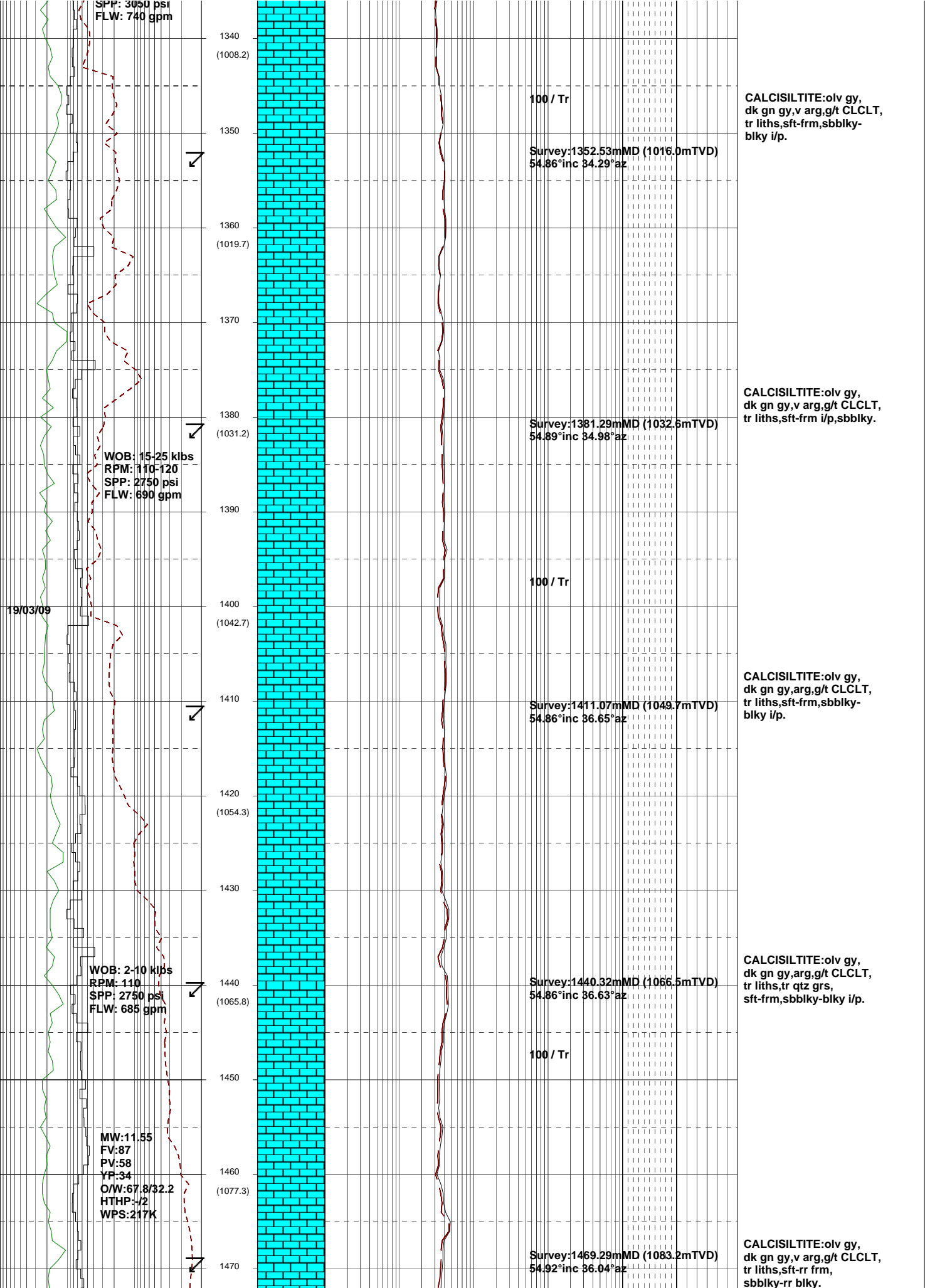
CALCILUTITE: olv gy-dk
gn gy, slty i/p,
sft frm, amor-sbbkly.

CALCILUTITE: olv gy-dk
gn gy, slty, tr liths, tr
qtz grs, sft frm, sbbkly.

CALCILUTITE: olv gy-dk
gn gy, slty g/t
CLCSLT i/p, tr liths,
tr qtz grs, sft frm,
sbbkly.

CALCISILTITE: olv gy-dk
gn gy, aren i/p, tr qtz grs,
sft frm, sbbkly, bllky, ip





SPP: 3050 psi
FLW: 740 gpm

1340
(1008.2)

100 / Tr

CALCISILTITE: olv gy,
dk gn gy, v arg, g/t CLCLT,
tr liths, sft-frm, sbbkly-
blky i/p.

1350

Survey: 1352.53mMD (1016.0mTVD)
54.86°inc 34.29°az

1360
(1019.7)

1370

1380
(1031.2)

Survey: 1381.29mMD (1032.6mTVD)
54.89°inc 34.98°az

CALCISILTITE: olv gy,
dk gn gy, v arg, g/t CLCLT,
tr liths, sft-frm i/p, sbbkly.

WOB: 15-25 klbs
RPM: 110-120
SPP: 2750 psi
FLW: 690 gpm

1390

100 / Tr

19/03/09

1400
(1042.7)

CALCISILTITE: olv gy,
dk gn gy, arg, g/t CLCLT,
tr liths, sft-frm, sbbkly-
blky i/p.

1410

Survey: 1411.07mMD (1049.7mTVD)
54.86°inc 36.65°az

1420
(1054.3)

1430

CALCISILTITE: olv gy,
dk gn gy, arg, g/t CLCLT,
tr liths, tr qtz grs,
sft-frm, sbbkly-blky i/p.

WOB: 2-10 klbs
RPM: 110
SPP: 2750 psi
FLW: 685 gpm

1440
(1065.8)

Survey: 1440.32mMD (1066.5mTVD)
54.86°inc 36.63°az

100 / Tr

1450

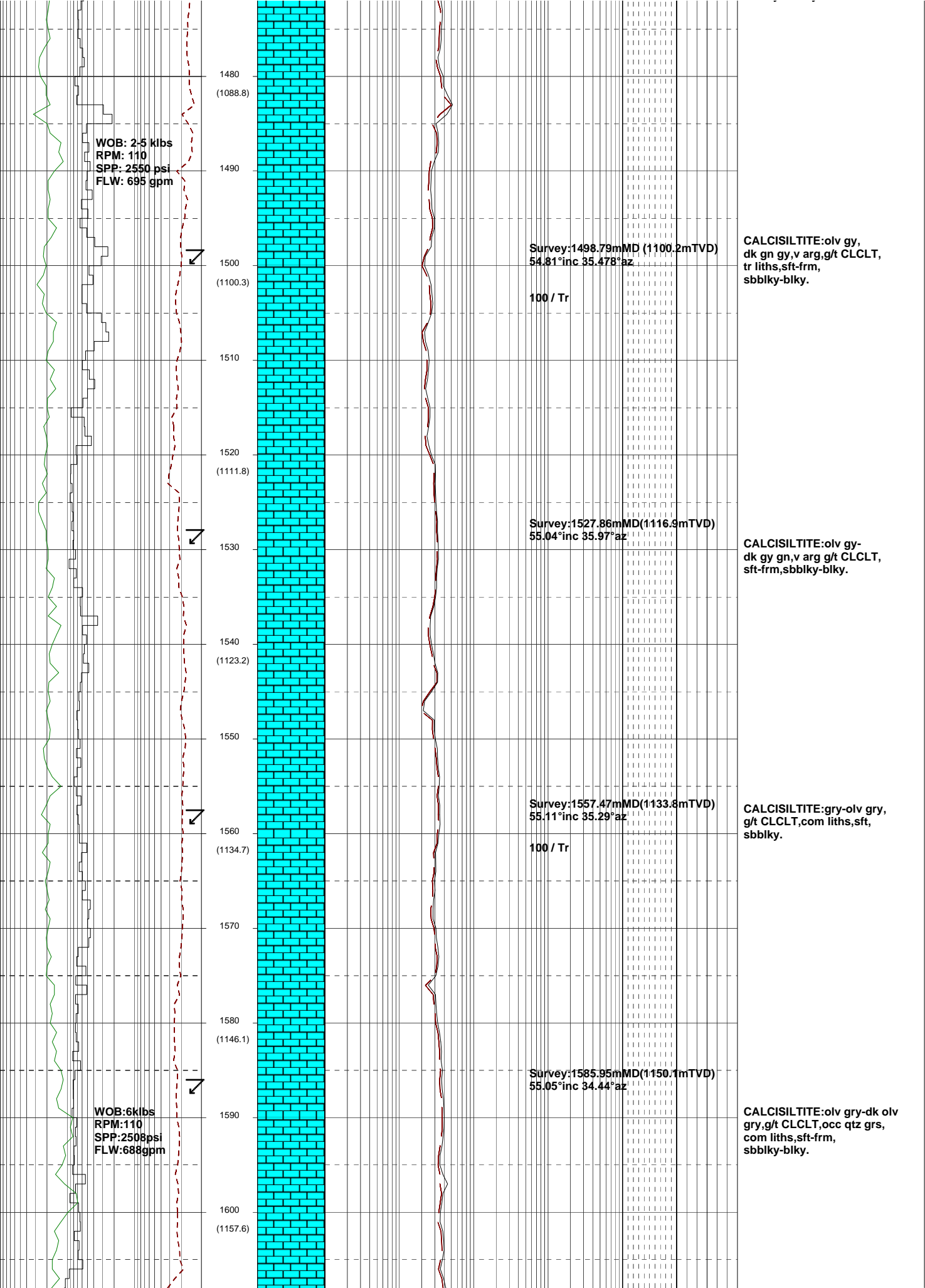
MW: 11.55
FV: 87
PV: 58
YP: 34
O/W: 67.8/32.2
HTHP: -/2
WPS: 217K

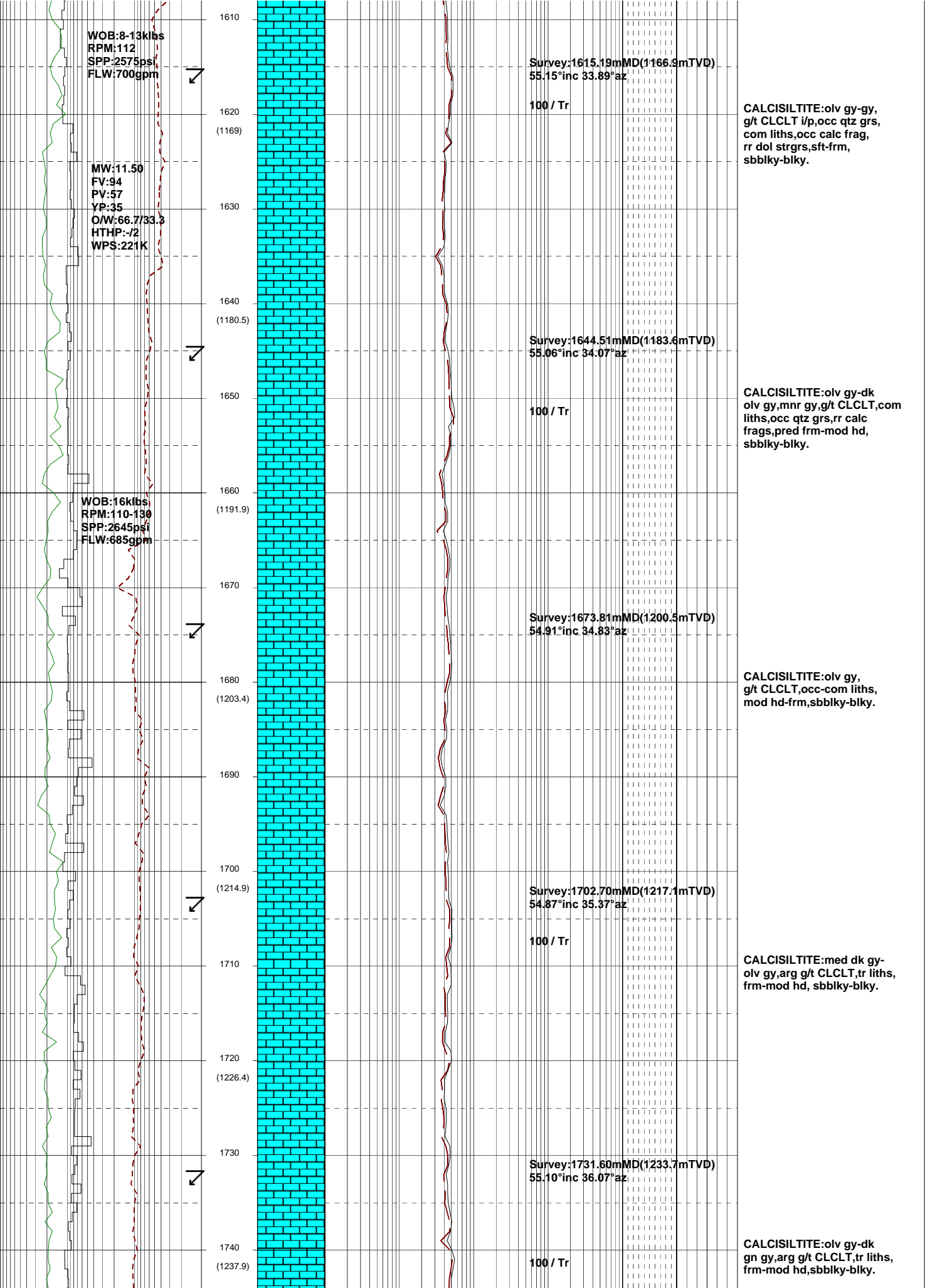
1460
(1077.3)

CALCISILTITE: olv gy,
dk gn gy, v arg, g/t CLCLT,
tr liths, sft-rr frm,
sbbkly-rr blky.

1470

Survey: 1469.29mMD (1083.2mTVD)
54.92°inc 36.04°az





WOB:8-13kias
RPM:112
SPP:2575psi
FLW:700gpm

MW:11.50
FV:94
PV:57
YP:35
OW:66.7/33.3
HTHP:-/2
WPS:221K

WOB:16kias
RPM:110-130
SPP:2645psi
FLW:685gpm

Survey:1615.19mMD(1166.9mTVD)
55.15°inc 33.89°az

100 / Tr

CALCISILTITE:olv gy-gy,
g/t CLCLT i/p,occ qtz grs,
com liths,occ calc frag,
rr dol strgrs,sft frm,
sbbiky-blky.

Survey:1644.51mMD(1183.6mTVD)
55.06°inc 34.07°az

100 / Tr

CALCISILTITE:olv gy-dk
olv gy,mnr gy,g/t CLCLT,com
liths,occ qtz grs,rr calc
frags,pred frm-mod hd,
sbbiky-blky.

Survey:1673.81mMD(1200.3mTVD)
54.91°inc 34.83°az

CALCISILTITE:olv gy,
g/t CLCLT,occ-com liths,
mod hd frm,sbbiky-blky.

Survey:1702.70mMD(1217.1mTVD)
54.87°inc 35.37°az

100 / Tr

CALCISILTITE:med dk gy-
olv gy,arg g/t CLCLT,tr liths,
frm-mod hd, sbbiky-blky.

Survey:1731.60mMD(1233.7mTVD)
55.10°inc 36.07°az

100 / Tr

CALCISILTITE:olv gy-dk
gn gy,arg g/t CLCLT,tr liths,
frm-mod hd,sbbiky-blky.

WOB:15klbs
RPM:142
SPP:2670psi
FLW:695gpm

MW:11.50
FV:98
PV:60
YP:31
OW:67.9/32
HTHP:-/2
WPS:223K

WOB:15klbs
RPM:110
SPP:2800psi
FLW:695gpm

1750

1760
(1249.3)

1770

1780
(1260.8)

1790

1800
(1272.3)

1810

1820
(1283.8)

1830

1840
(1295.2)

1850

1860
(1306.7)

1870

1880

Survey:1761.06mMD(1250.5mTVD)
55.03°inc 35.07°az

Survey:1790.17mMD(1267.2mTVD)
55.00°inc 34.56°az

Survey:1819.04mMD(1283.8mTVD)
54.91°inc 34.40°az

Survey:1847.13mMD(1299.2mTVD)
54.99°inc 34.25°az

Survey:1876.76mMD(1316.9mTVD)
54.88°inc 34.36°az

100 / Tr

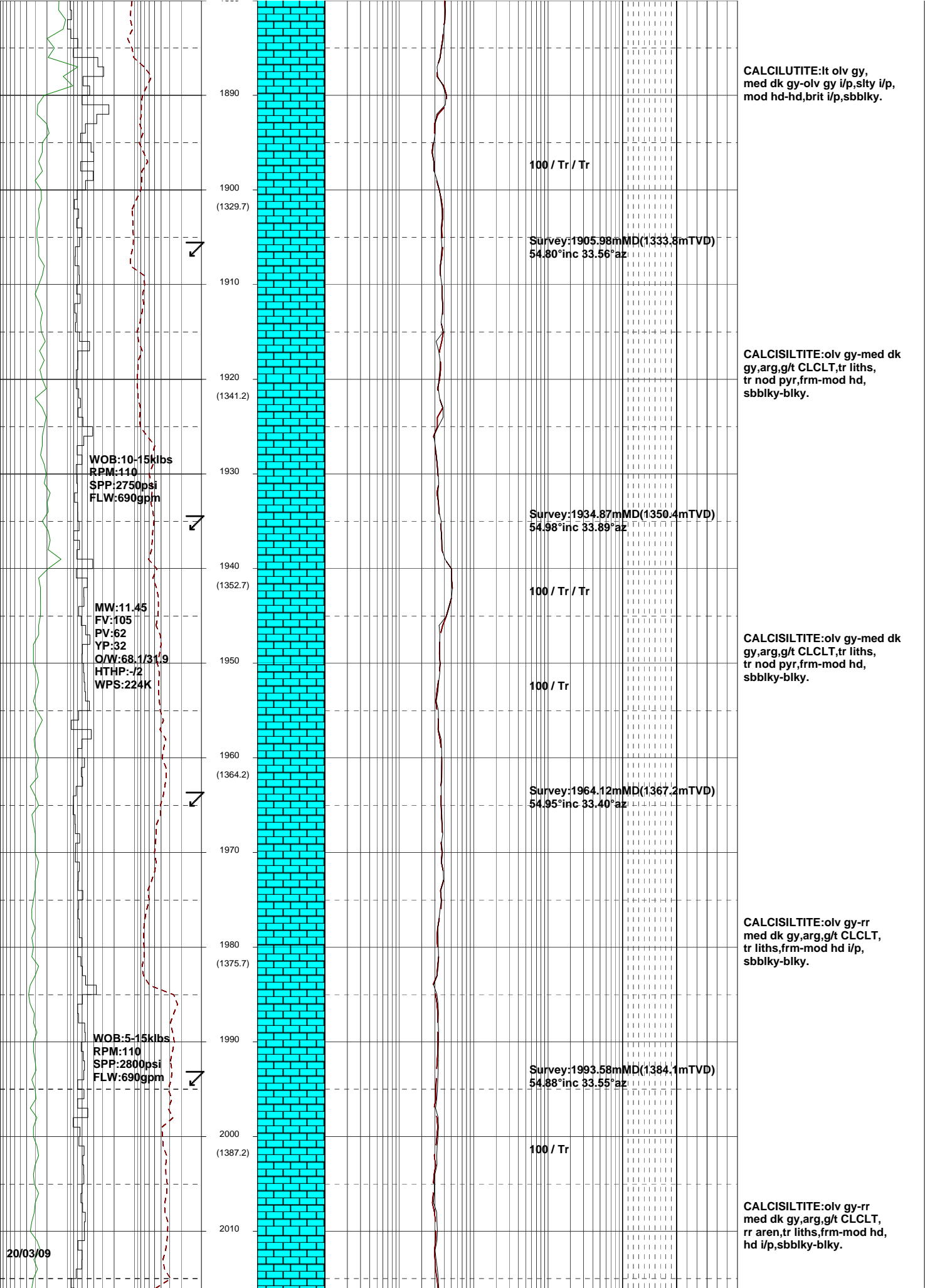
100 / Tr

CALCILUTITE:med dk gy-
olv gy,tr liths,
frm-mod hd,sbblky-blky.

CALCISILTITE:med dk gy-
olv gy,occ qtz grns,frm-
mod hd,sbblky-blky.

CALCISILTITE:med dk gy-
olv gy,tr liths,
occ qtz grs,frm-mod hd-
sft i/p,sbblky-blky.

CALCISILTITE:med dk gy-
olv gy,tr liths,frm-mod
hd i/p,sbblky-blky.



CALCILUTITE:lt olv gy, med dk gy-olv gy i/p,sity i/p, mod hd-hd,brit i/p,sbbiky.

100 / Tr / Tr

Survey:1905.98mMD(1333.8mTVD)
54.80°inc 33.56°az

CALCISILTITE:olv gy-med dk gy,arg,g/t CLCLT,tr liths, tr nod pyr,frm-mod hd, sbbiky-blky.

Survey:1934.87mMD(1350.4mTVD)
54.98°inc 33.89°az

CALCISILTITE:olv gy-med dk gy,arg,g/t CLCLT,tr liths, tr nod pyr,frm-mod hd, sbbiky-blky.

100 / Tr

Survey:1964.12mMD(1367.2mTVD)
54.95°inc 33.40°az

CALCISILTITE:olv gy-rr med dk gy,arg,g/t CLCLT, tr liths,frm-mod hd i/p, sbbiky-blky.

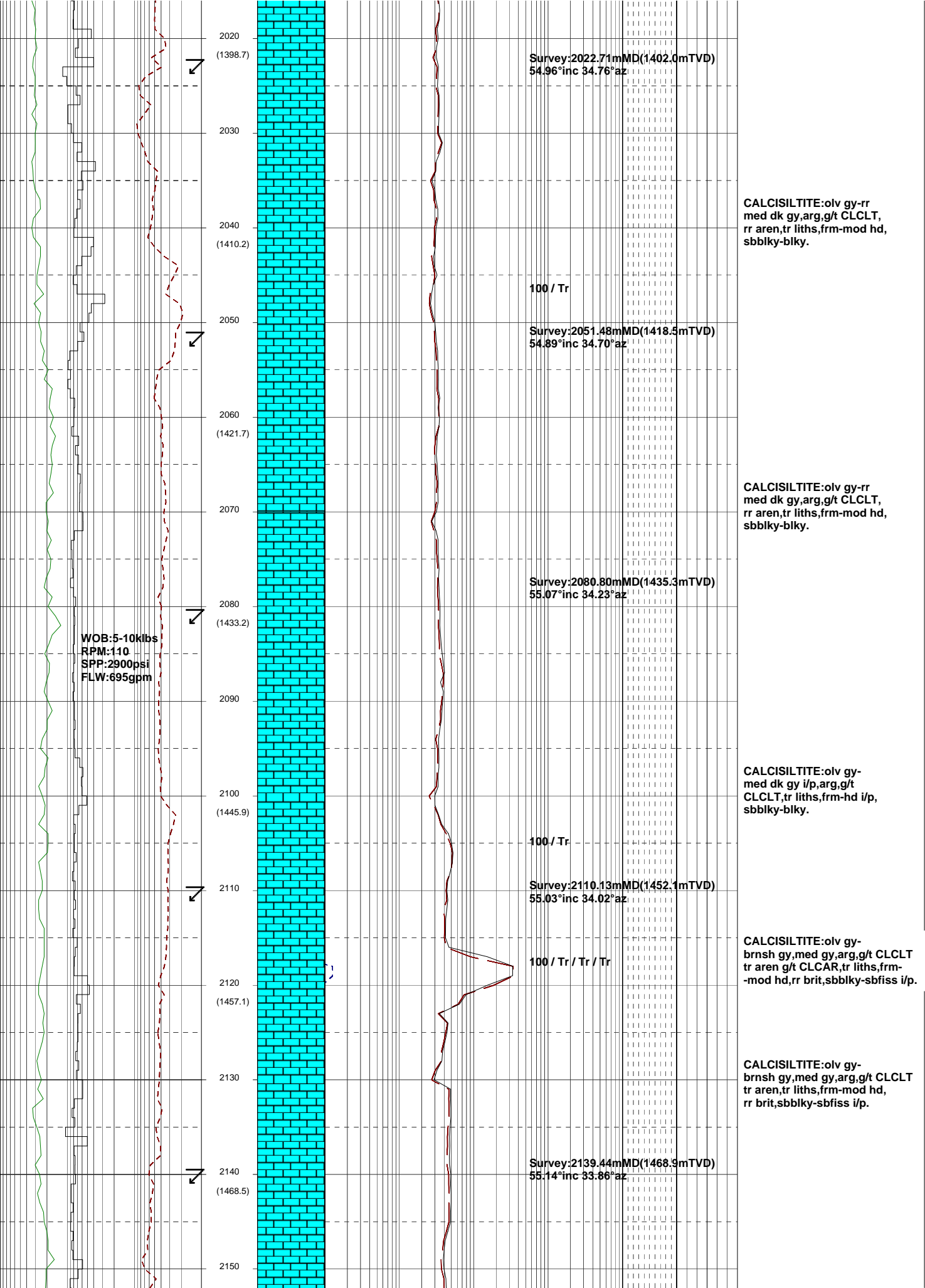
Survey:1993.58mMD(1384.1mTVD)
54.88°inc 33.55°az

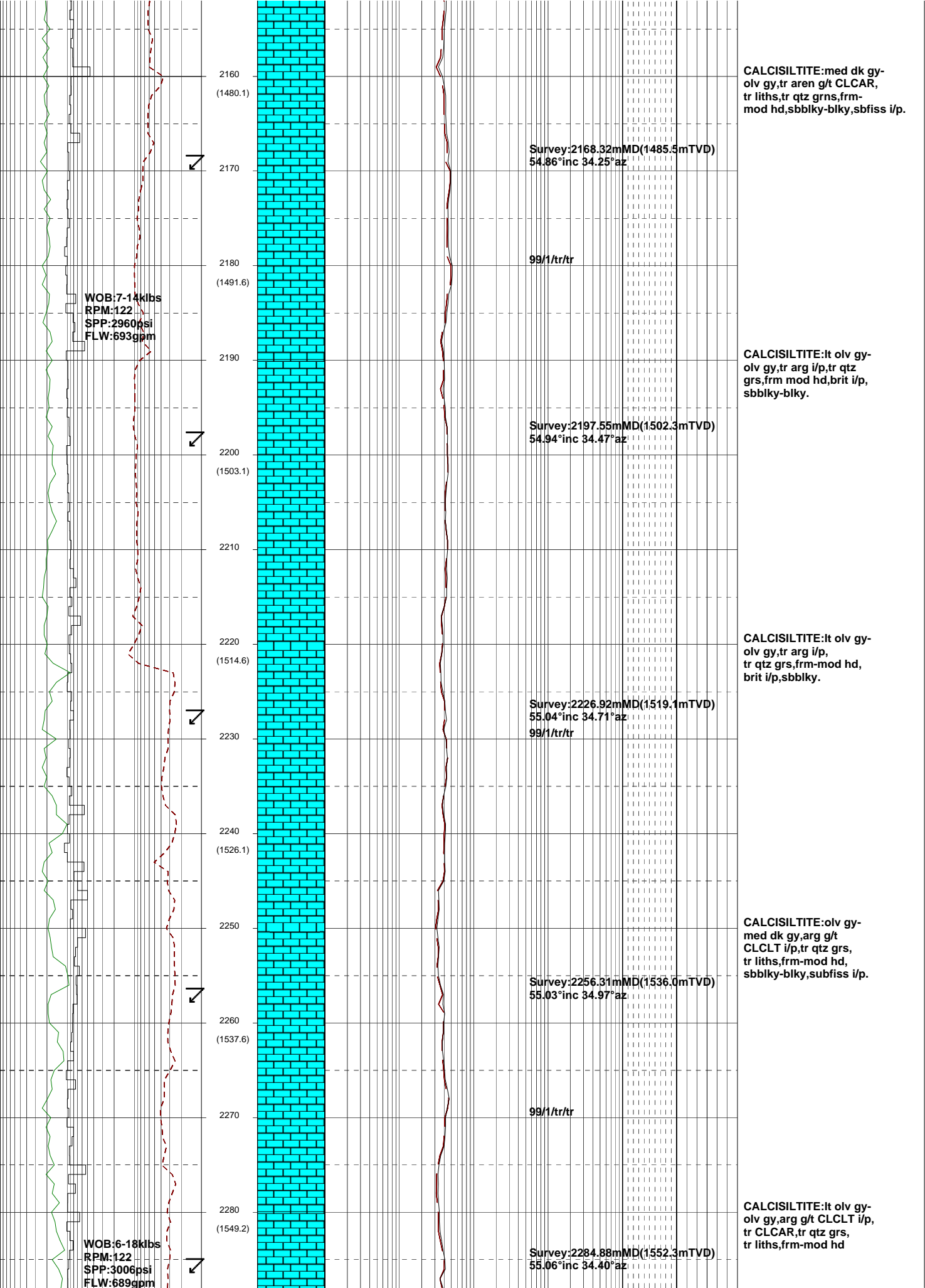
CALCISILTITE:olv gy-rr med dk gy,arg,g/t CLCLT, rr aren,tr liths,frm-mod hd, hd i/p,sbbiky-blky.

WOB:10-15klbs
RPM:110
SPP:2750psi
FLW:690gpm

MW:11.45
FV:105
PV:62
YP:32
O/W:68.1/31.9
HTHP:-/2
WPS:224K

WOB:5-15klbs
RPM:110
SPP:2800psi
FLW:690gpm





2160
(1480.1)

**CALCISILTITE: med dk gy-
olv gy, tr aren g/t CLCAR,
tr liths, tr qtz grns, frm-
mod hd, sbbiky-blky, sbfiss i/p.**

Survey: 2168.32mMD (1485.5mTVD)
54.86° inc 34.25° az

2170

99/1/tr/tr

2180
(1491.6)

WOB: 7-14 klbs
RPM: 122
SPP: 2960 psi
FLW: 693 gpm

**CALCISILTITE: lt olv gy-
olv gy, tr arg i/p, tr qtz
grs, frm mod hd, brit i/p,
sbbiky-blky.**

Survey: 2197.55mMD (1502.3mTVD)
54.94° inc 34.47° az

2200
(1503.1)

**CALCISILTITE: lt olv gy-
olv gy, tr arg i/p,
tr qtz grs, frm-mod hd,
brit i/p, sbbiky.**

Survey: 2226.92mMD (1519.1mTVD)
55.04° inc 34.71° az

2230

99/1/tr/tr

2240
(1526.1)

**CALCISILTITE: olv gy-
med dk gy, arg g/t
CLCLT i/p, tr qtz grs,
tr liths, frm-mod hd,
sbbiky-blky, subfiss i/p.**

Survey: 2256.31mMD (1536.0mTVD)
55.03° inc 34.97° az

2260
(1537.6)

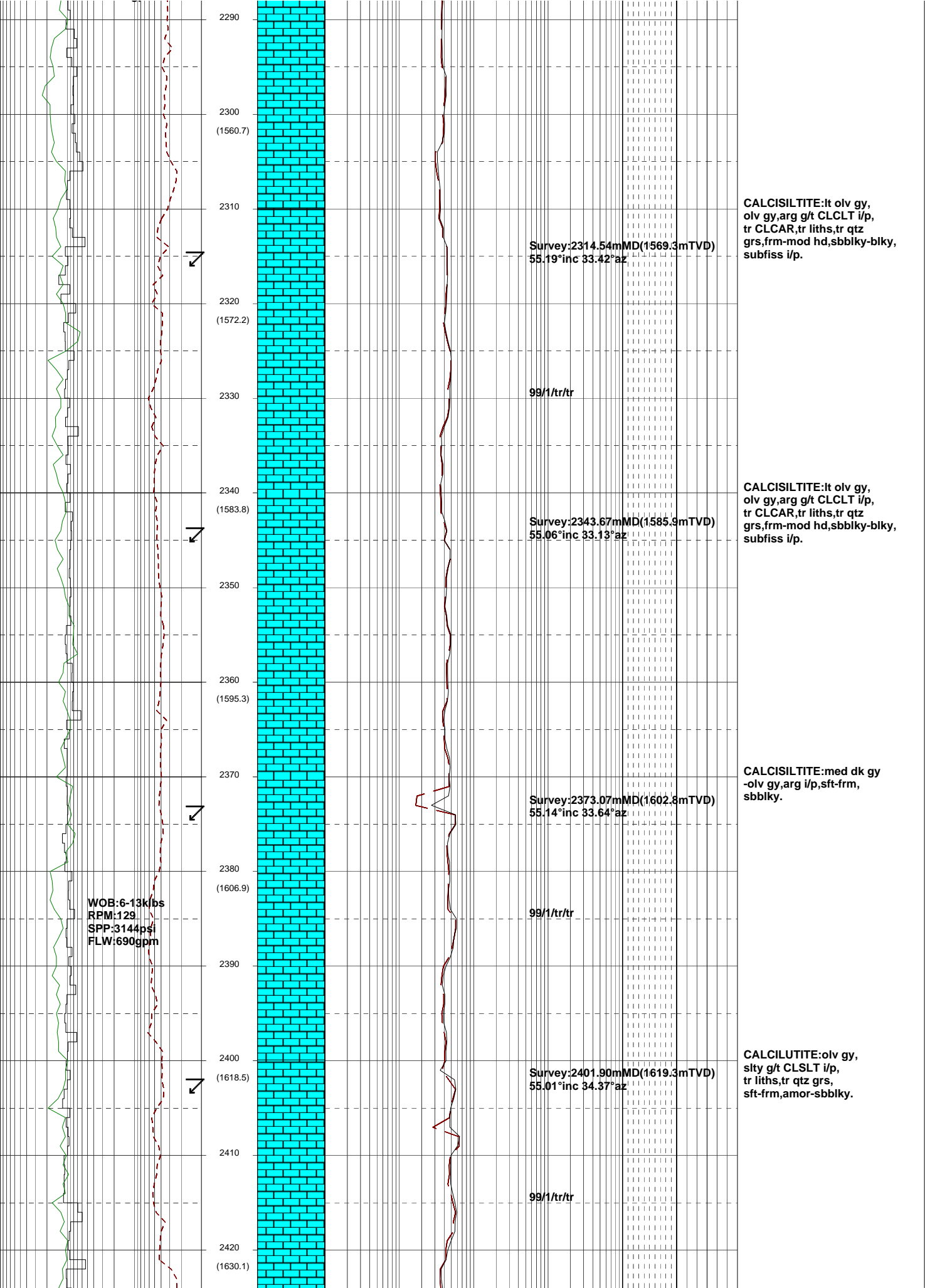
99/1/tr/tr

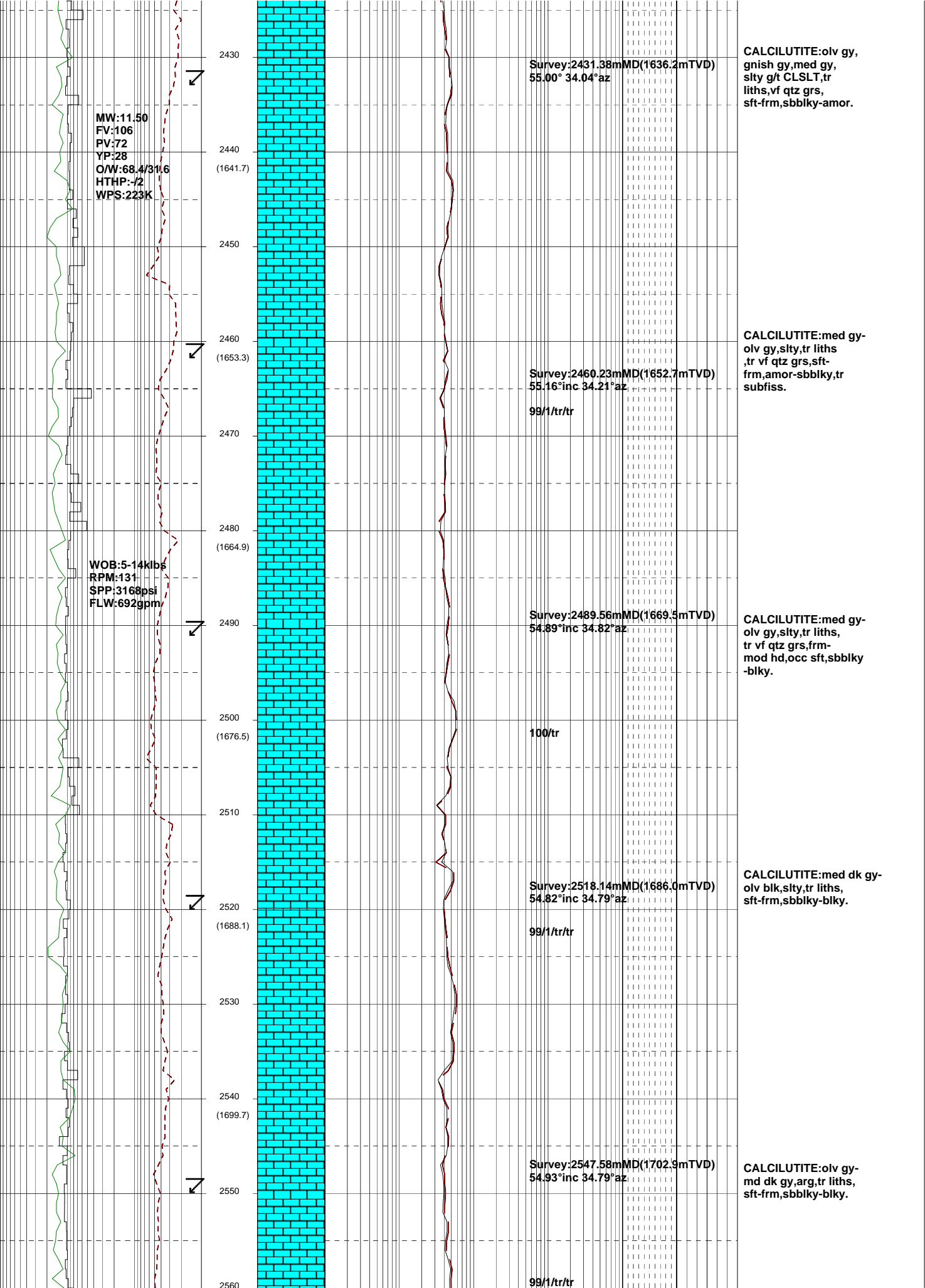
2280
(1549.2)

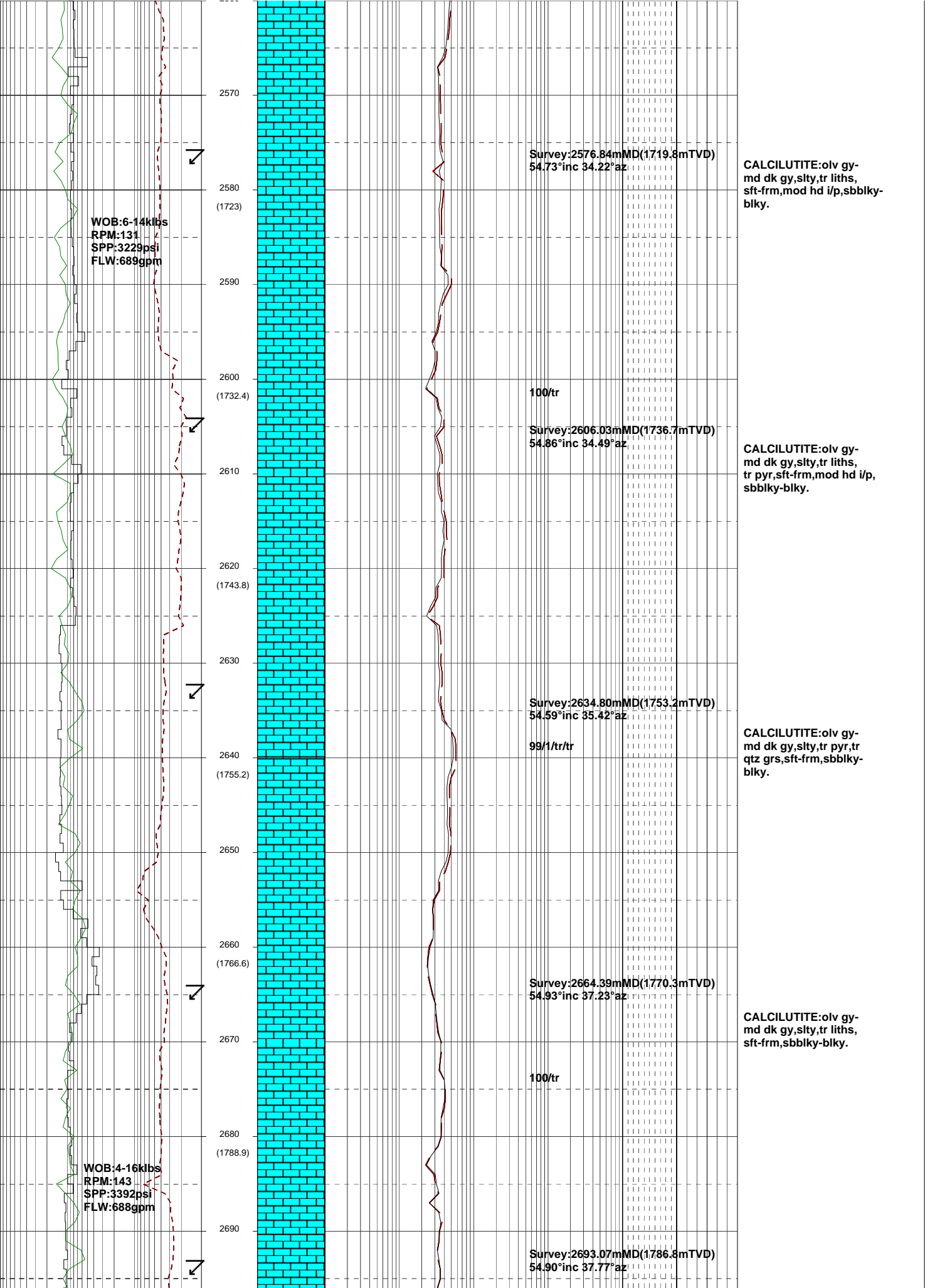
**CALCISILTITE: lt olv gy-
olv gy, arg g/t CLCLT i/p,
tr CLCAR, tr qtz grs,
tr liths, frm-mod hd**

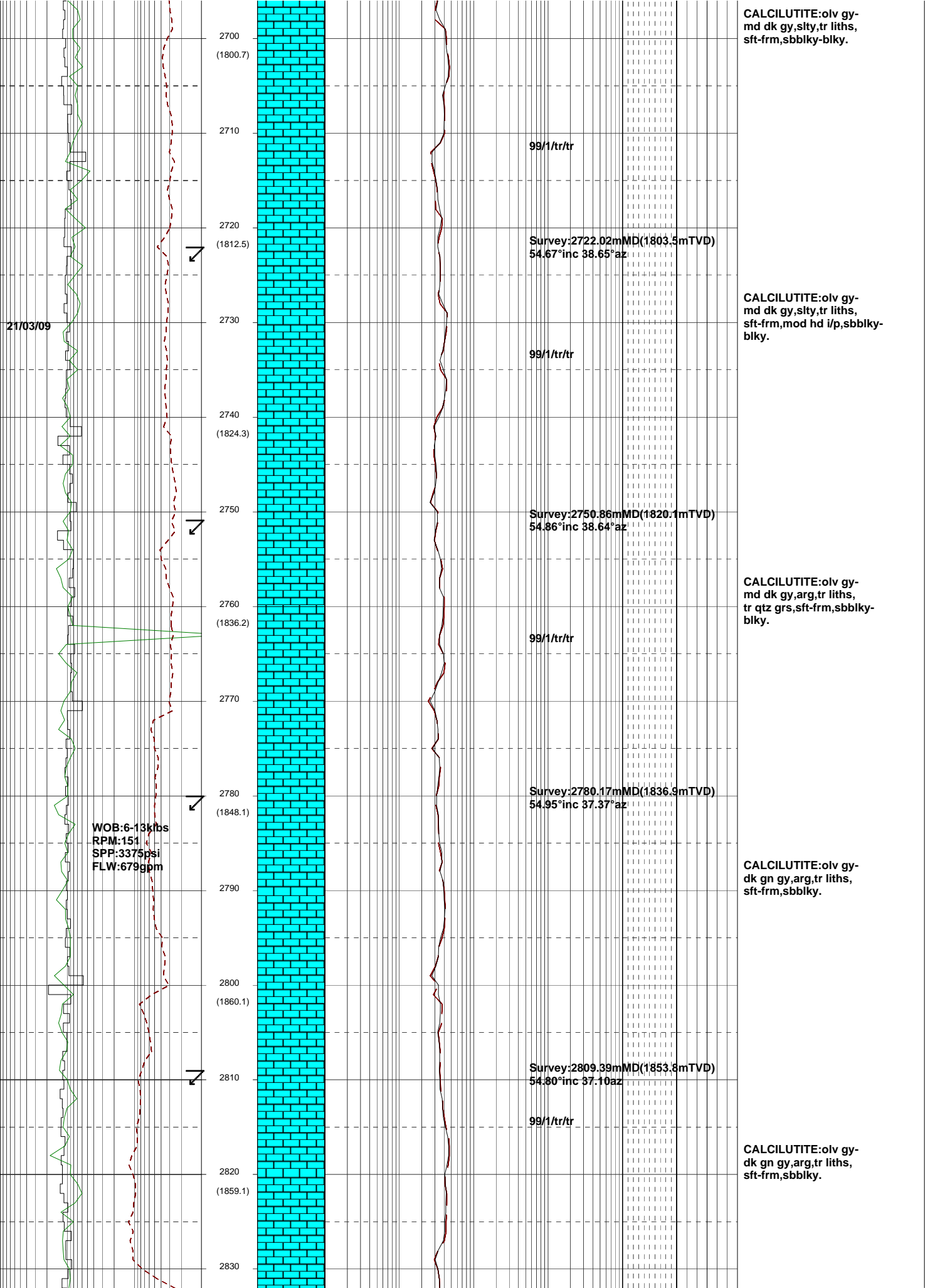
Survey: 2284.88mMD (1552.3mTVD)
55.06° inc 34.40° az

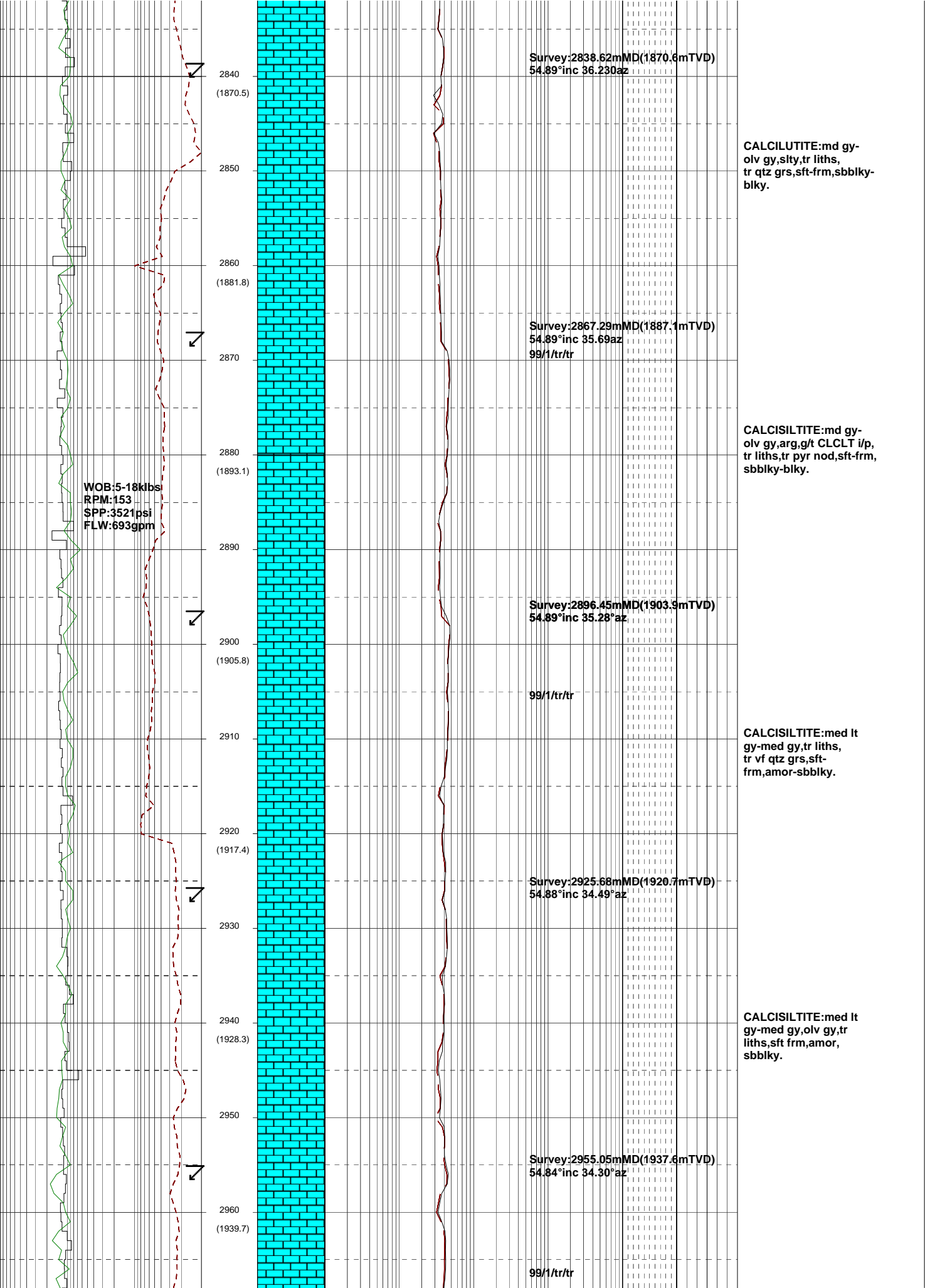
WOB: 6-18 klbs
RPM: 122
SPP: 3006 psi
FLW: 689 gpm

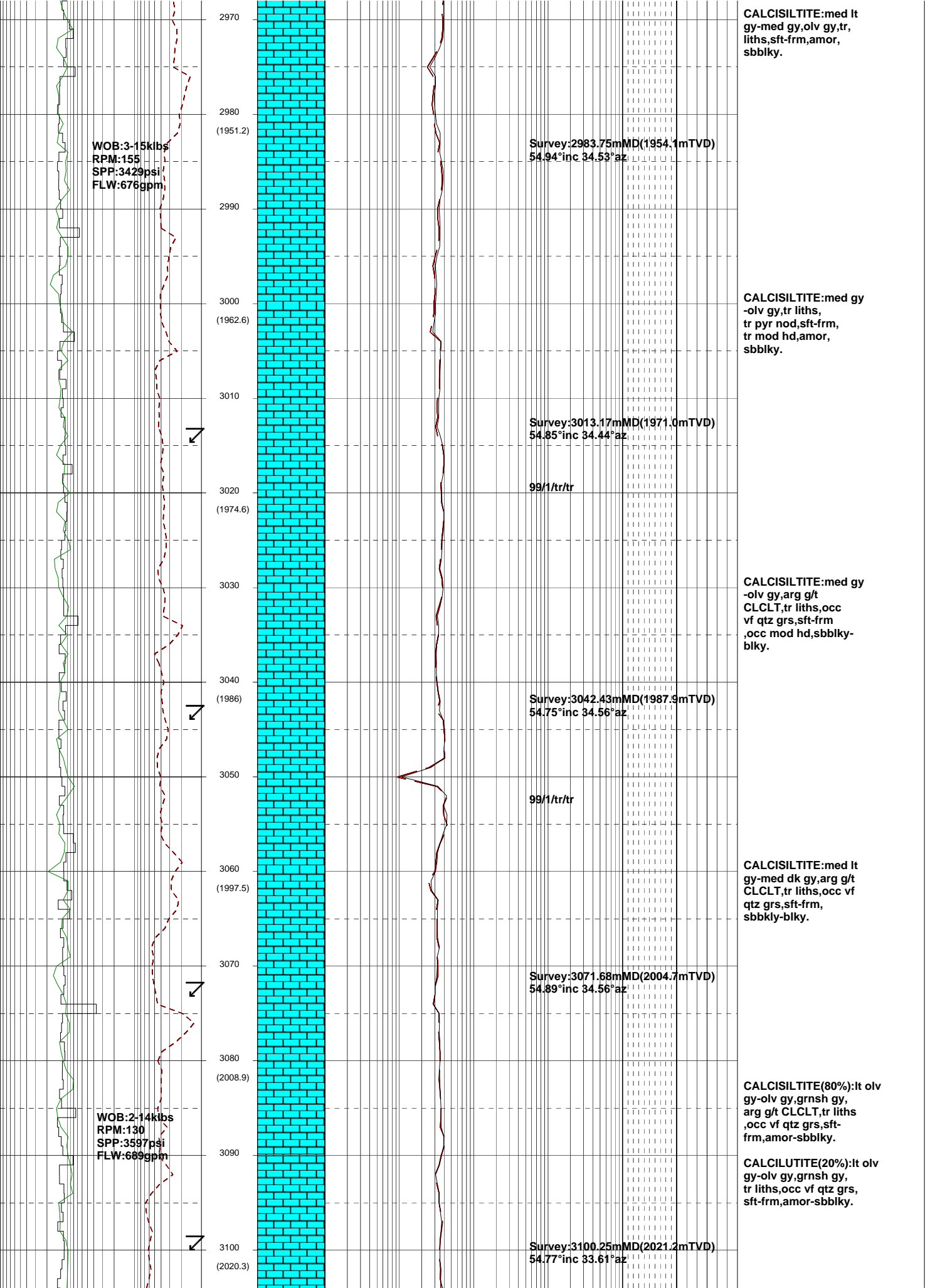












WOB:3-15kibs
RPM:155
SPP:3429psi
FLW:676gpm

Survey:2983.75mMD(1954.1mTVD)
54.94°inc 34.53°az

CALCISILTITE:med lt
gy-med gy,olv gy,tr,
liths,sft frm,amor,
sbbiky.

2970
(1951.2)

2990

3000
(1962.6)

3010

Survey:3013.17mMD(1971.0mTVD)
54.85°inc 34.44°az

CALCISILTITE:med gy
-olv gy,tr liths,
tr pyr nod,sft frm,
tr mod hd,amor,
sbbiky.

3020
(1974.6)

99/1tr/tr

3030

CALCISILTITE:med gy
-olv gy,arg g/t
CLCLT,tr liths,occ
vf qtz grs,sft frm
.occ mod hd,sbbiky-
biky.

3040
(1986)

Survey:3042.43mMD(1987.9mTVD)
54.75°inc 34.56°az

CALCISILTITE:med lt
gy-med dk gy,arg g/t
CLCLT,tr liths,occ vf
qtz grs,sft frm,
sbbiky-biky.

3050

99/1tr/tr

3060
(1997.5)

3070

Survey:3071.68mMD(2004.7mTVD)
54.89°inc 34.56°az

CALCISILTITE(80%):lt olv
gy-olv gy,grnsh gy,
arg g/t CLCLT,tr liths
.occ vf qtz grs,sft
frm,amor-sbbiky.

3080
(2008.9)

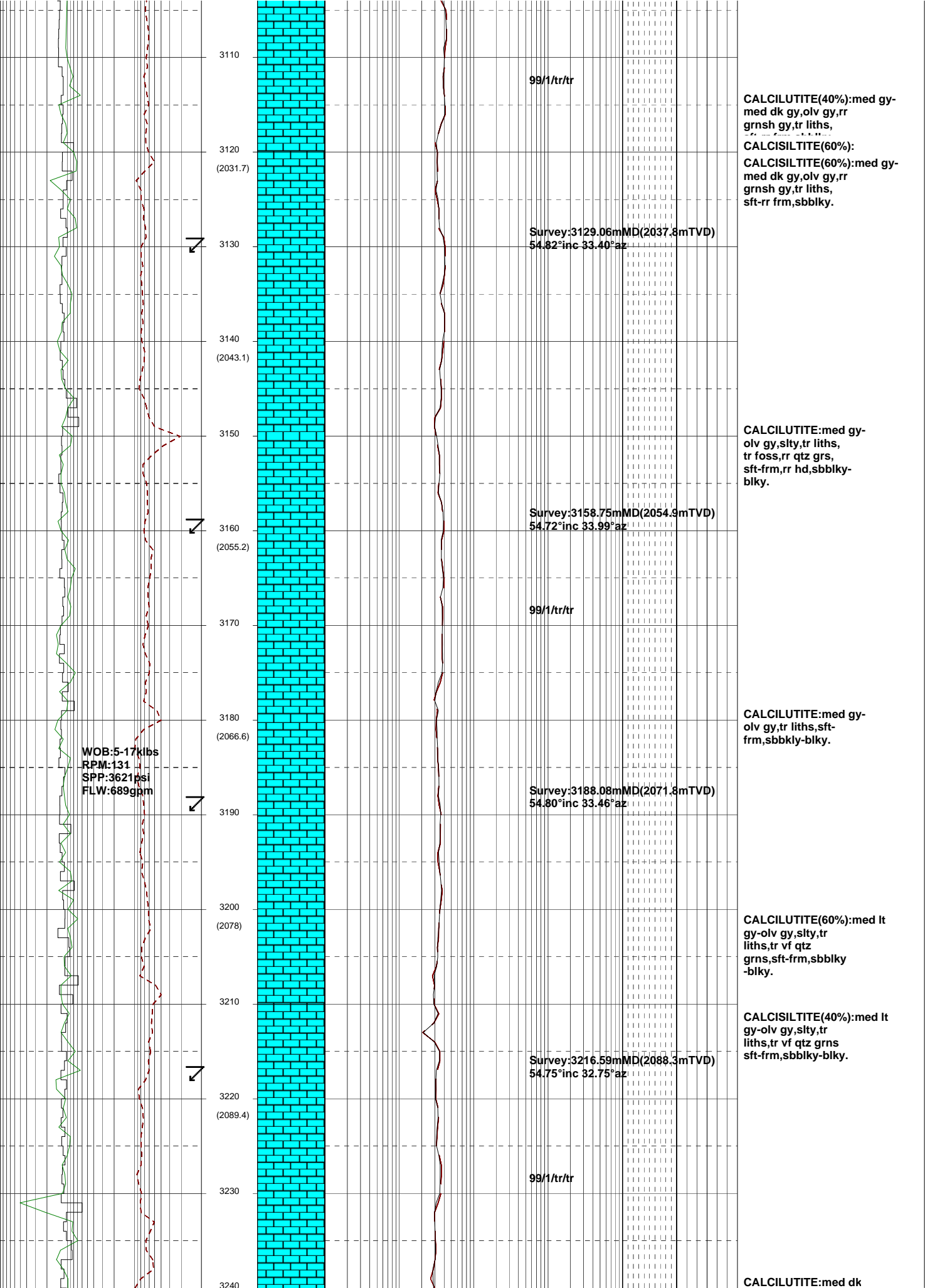
WOB:2-14kibs
RPM:130
SPP:3597psi
FLW:689gpm

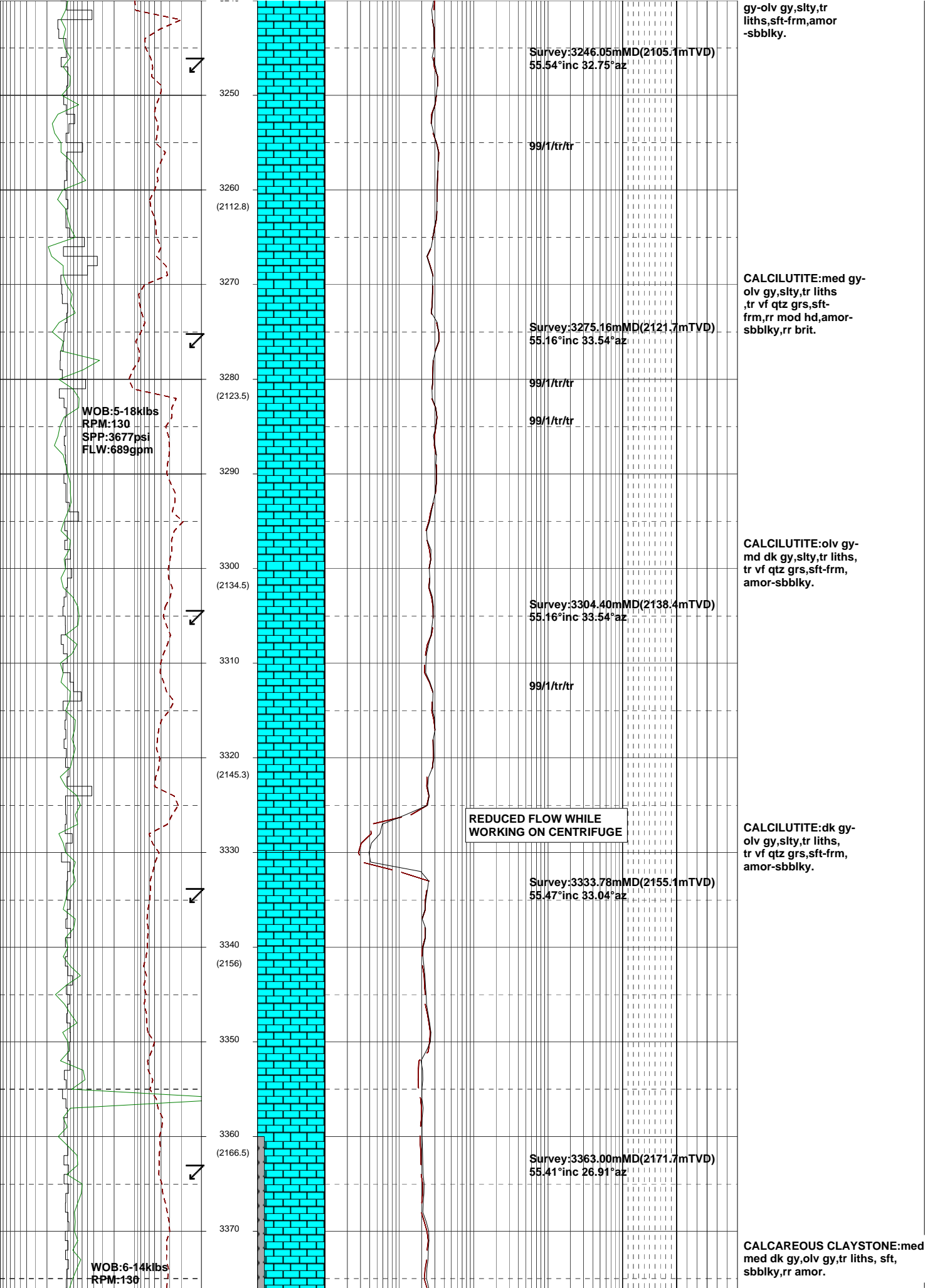
CALCILUTITE(20%):lt olv
gy-olv gy,grnsh gy,
tr liths,occ vf qtz grs,
sft frm,amor-sbbiky.

3090

3100
(2020.3)

Survey:3100.25mMD(2021.2mTVD)
54.77°inc 33.61°az





gy-olv gy, slty, tr liths, sft frm, amor-sbbiky.

Survey: 3246.05m MD (2105.1m TVD)
55.54° inc 32.75° az

99/1/tr/tr

3250

3260
(2112.8)

3270

Survey: 3275.16m MD (2121.7m TVD)
55.16° inc 33.54° az

99/1/tr/tr

99/1/tr/tr

3280
(2123.5)

WOB: 5-18klbs
RPM: 130
SPP: 3677psi
FLW: 689gpm

3290

3300
(2134.5)

Survey: 3304.40m MD (2138.4m TVD)
55.16° inc 33.54° az

99/1/tr/tr

CALCILUTITE: olv gy-
md dk gy, slty, tr liths,
tr vf qtz grs, sft frm,
amor-sbbiky.

3310

3320
(2145.3)

REDUCED FLOW WHILE
WORKING ON CENTRIFUGE

CALCILUTITE: dk gy-
olv gy, slty, tr liths,
tr vf qtz grs, sft frm,
amor-sbbiky.

3330

Survey: 3333.78m MD (2155.1m TVD)
55.47° inc 33.04° az

3340
(2156)

3350

3360
(2166.5)

Survey: 3363.00m MD (2171.7m TVD)
55.41° inc 26.91° az

3370

CALCAREOUS CLAYSTONE: med
med dk gy, olv gy, tr liths, sft,
sbbiky, rr amor.

WOB: 6-14klbs
RPM: 130

SPP:3641psi
FLW:681gpm

3380
(2176.9)

REDUCED FLOW WHILE
WORKING ON CENTRIFUGE

LAKES ENTRANCE Fm.
3390.0mMDRT,2185.9mTVDRT,
-2144.9mTVDSS.

3390

Survey:3392.41mMD(2188.4mTVD)
55.39°inc 22.35°az

3400
(2192.1)

3410

MW:11.5
FV:124
PV:72
YP:33
Q/W:54.5/23.5
HTHP:-/3
WPS:236k

3420
(2203.5)

Survey:3421.69mMD(2205.0mTVD)
55.30°inc 20.48°az

3430

3440
(2214.9)

3450

Survey:3450.87mMD(2221.6mTVD)
55.26°inc 19.16°az

3460
(2226.3)

3470

WOB:8-17klbs
RPM:130
SPP:3674psi
FLW:673gpm

3480
(2237.7)

Survey:3480.02mMD(2238.3mTVD)
54.98°inc 15.26°az

3490

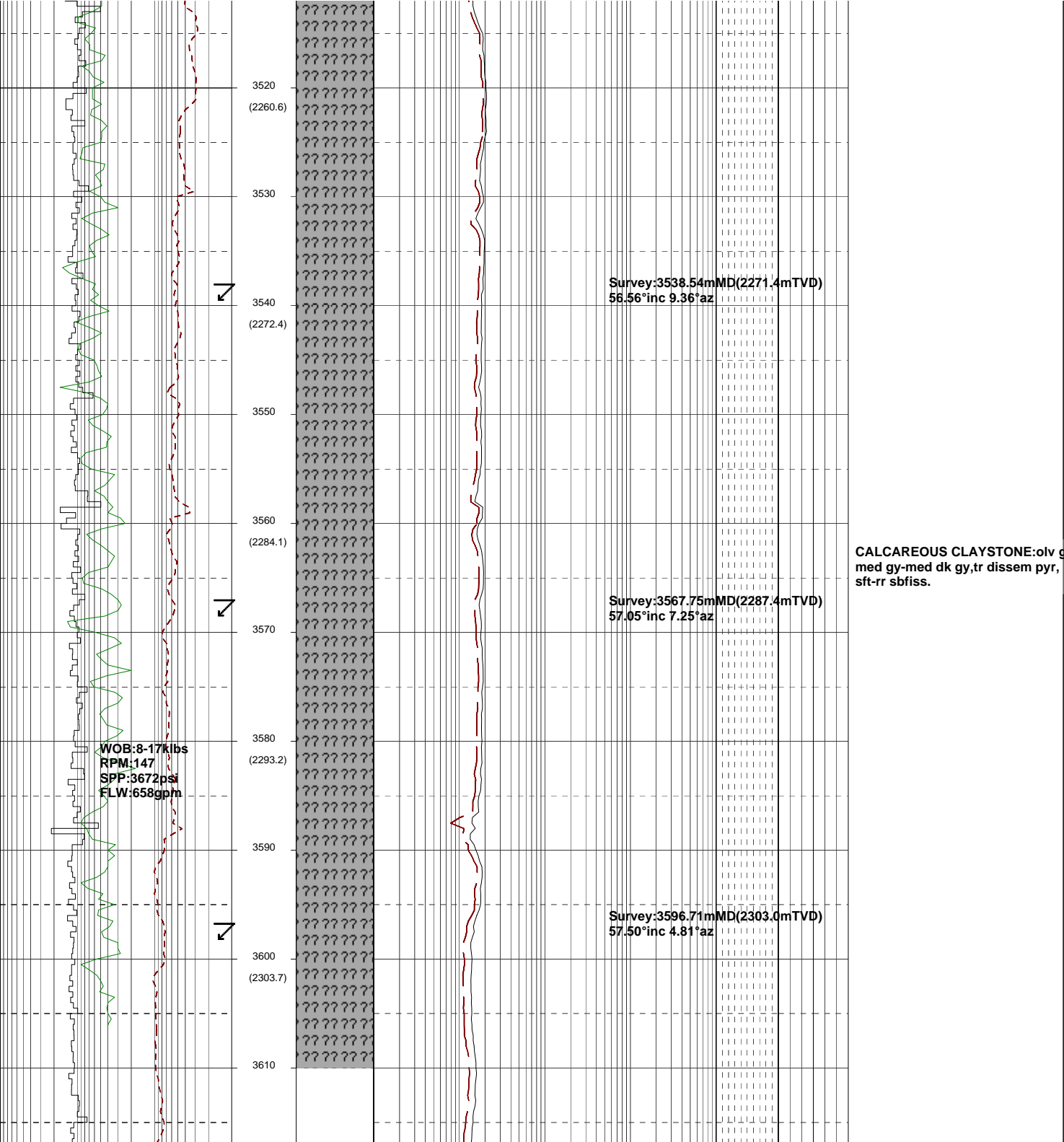
22/03/09

3500
(2249.2)

CALCAREOUS CLAYSTONE: med
med dk gy,olv gy,tr liths, sft-
tr frm,sbbiky.

3510

Survey:3509.47mMD(2255.1mTVD)
56.56°inc 12.76°az



3520
(2260.6)

3530

3540
(2272.4)

3550

3560
(2284.1)

3570

3580
(2293.2)

3590

3600
(2303.7)

3610

Survey:3538.54mMD(2271.4mTVD)
56.56°inc 9.36°az

Survey:3567.75mMD(2287.4mTVD)
57.05°inc 7.25°az

Survey:3596.71mMD(2303.0mTVD)
57.50°inc 4.81°az

CALCAREOUS CLAYSTONE: oliv g
med gy-med dk gy, tr dissep pyr,
sft-rr sbfiss.

WOB:8-17kibs
RPM:147
SPP:3672psi
FLW:658gpm