



Company : ROC Oil

Well : Basker-7

Interval : 152.00 - 2414.60 meters

Created : 28/Jul/2009 5:15:05 AM



INTEQ

FORMATION EVALUATION LOG

| ROP (m/hr) | CORE | MD meters | CUTTINGS LITHOLOGY | INTERPRETED LITHOLOGY | TOTAL GAS (%) | | CHROMATOGRAPH | | | | | FLUORESCENCE | CALCIOMETRY | LITHOLOGY / REMARKS |
|-------------------|------|-----------|--------------------|-----------------------|--------------------|--------|-----------------------|------|-----|------|-------|--------------|-------------|---------------------|
| | | | | | 0.1 1 10 100 | | Methane ppm | | | | | | | |
| | | | | | Resistivity (Deep) | ohmm | Resistivity (Shallow) | ohmm | 100 | 1000 | 10000 | | | |
| 100 | | 150 | | | 10 | 100000 | | | | | | | | |
| ROP BACKUP (m/hr) | | | | | | | | | | | | | | |
| 300 | | | | | | | | | | | | | | |
| 0 | | | | | | | | | | | | | | |
| Gamma Ray | | | | | | | | | | | | | | |
| 200 | | | | | | | | | | | | | | |
| API | | | | | | | | | | | | | | |

| | | | | | | | | | | | | | | | |
|--|--|-----|--|--|--|--|--|--|--|--|--|--|--|--|--|
| | | 160 | | | | | | | | | | | | | |
| | | 170 | | | | | | | | | | | | | |
| | | 180 | | | | | | | | | | | | | |
| | | 190 | | | | | | | | | | | | | |
| | | 200 | | | | | | | | | | | | | |
| | | 210 | | | | | | | | | | | | | |
| | | 220 | | | | | | | | | | | | | |
| | | 230 | | | | | | | | | | | | | |
| | | 240 | | | | | | | | | | | | | |

NB1 Reed-Y11C
 660mm(26")
 Jets: 3x22, 1x16
 Depth In: 175.7m
 Depth Out: 210.7m
 Drilled: 35.0m in 0.5hrs
 Grade: T-1

22 July 2009
 28 July 2009

NB2 Smith XPR-VCPS
 406mm(16")
 Jets: 3x22, 1x15
 Depth In: 210.7m
 Depth Out: 1061.7m
 Drilled: 851.0m in 13.9hrs
 Grade: T-1-IN

All depth measurements in meters referenced from Rotary Table (RT)
 RT-AHD = 21.5m
 Water depth = 154.2mMDRT
 RT-Seabed = 175.7mMDRT

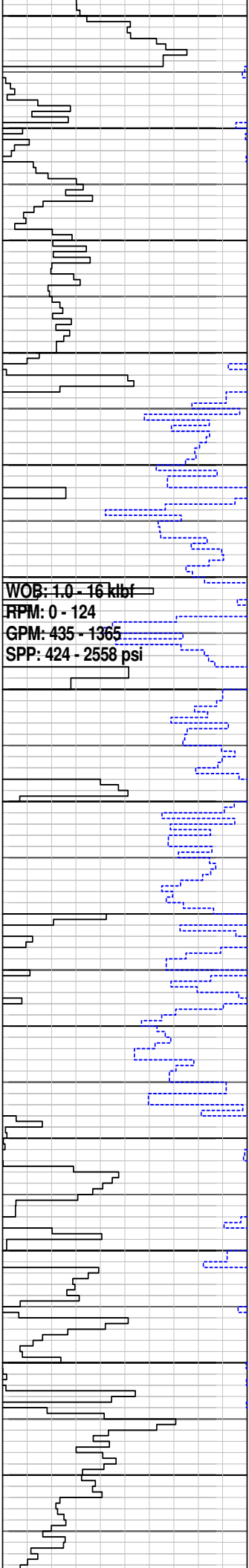
Basker-7 spudded at 03:00hrs on 22 July 2009

MD: 175.70m Inc: 0.00°
 Azi: 150.85° TVD: 175.70m

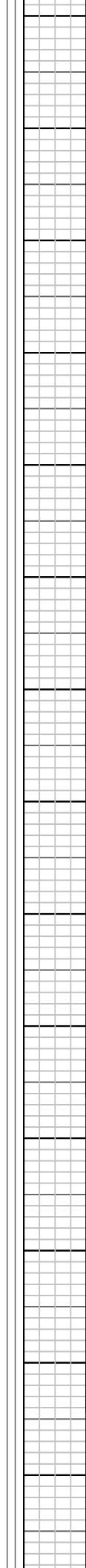
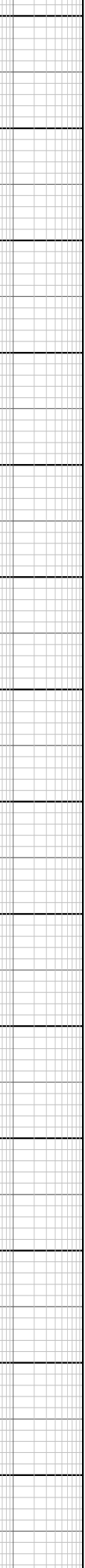
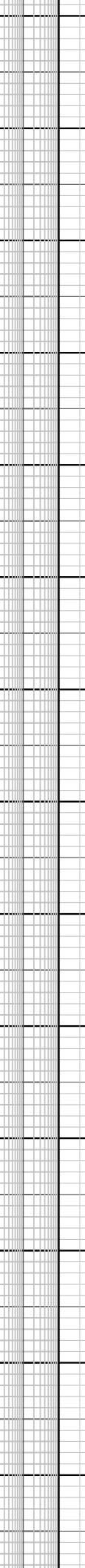
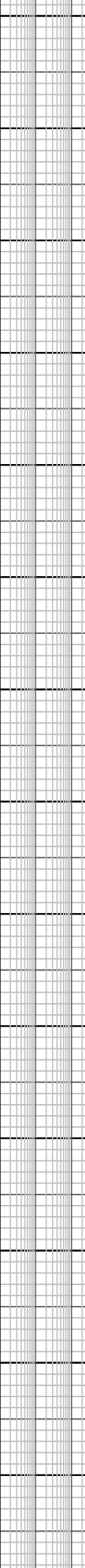
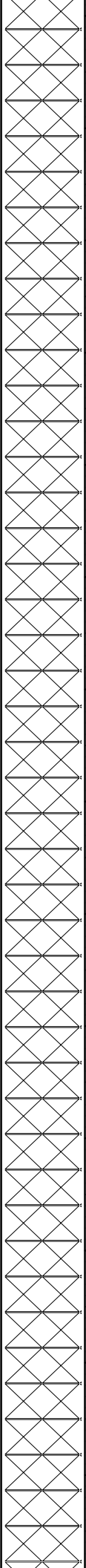
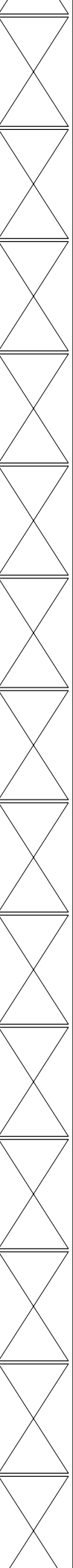
Drill with seawater and hi-vis sweeps. Returns to Seabed.

Set 762mm (30") x 508mm (20") casing shoe at 209.0mMDRT

MD: 226.76m Inc: 0.00°
 Azi: 128.45° TVD: 226.76m



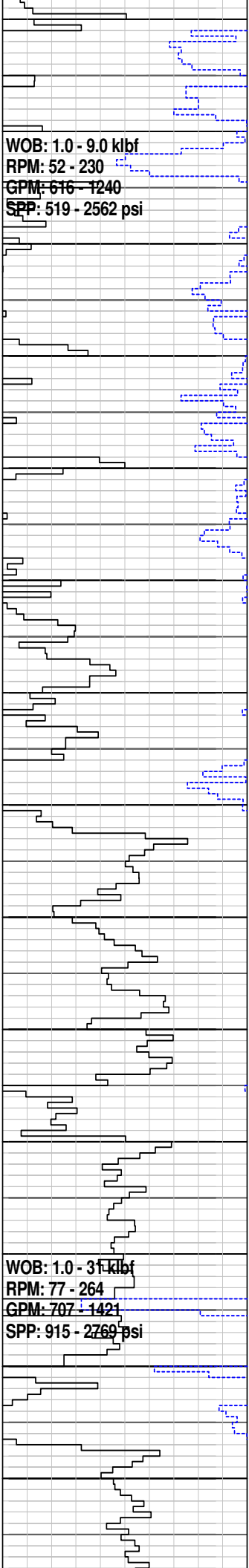
250
260
270
280
290
300
310
320
330
340
350
360
370
380



| |
|---|
| Drill with seawater and hi-vis sweeps. Returns to Seabed. |
| MD: 255.43m Inc: 0.36° Azi: 74.37° TVD: 255.43m |
| MD: 284.01m Inc: 0.78° Azi: 284.01° TVD: 284.01m |
| MD: 312.87m Inc: 1.11° Azi: 151.68° TVD: 312.86m |
| MD: 342.04m Inc: 1.83° Azi: 152.30° TVD: 342.02m |
| MD: 370.47m Inc: 3.26° Azi: 148.51° TVD: 370.43m |

WOB: 1.0 - 9.0 kbf
RPM: 52 - 230
GPM: 616 - 1240
SPP: 519 - 2562 psi

WOB: 1.0 - 31 kbf
RPM: 77 - 264
GPM: 707 - 1421
SPP: 915 - 2769 psi



390
400
410
420
430
440
450
460
470
480
490
500
510
520

Drill with seawater and hi-vis sweeps. Returns to Seabed.

MD: 399.01m Inc: 4.39°
Azi: 145.48° TVD: 398.91m

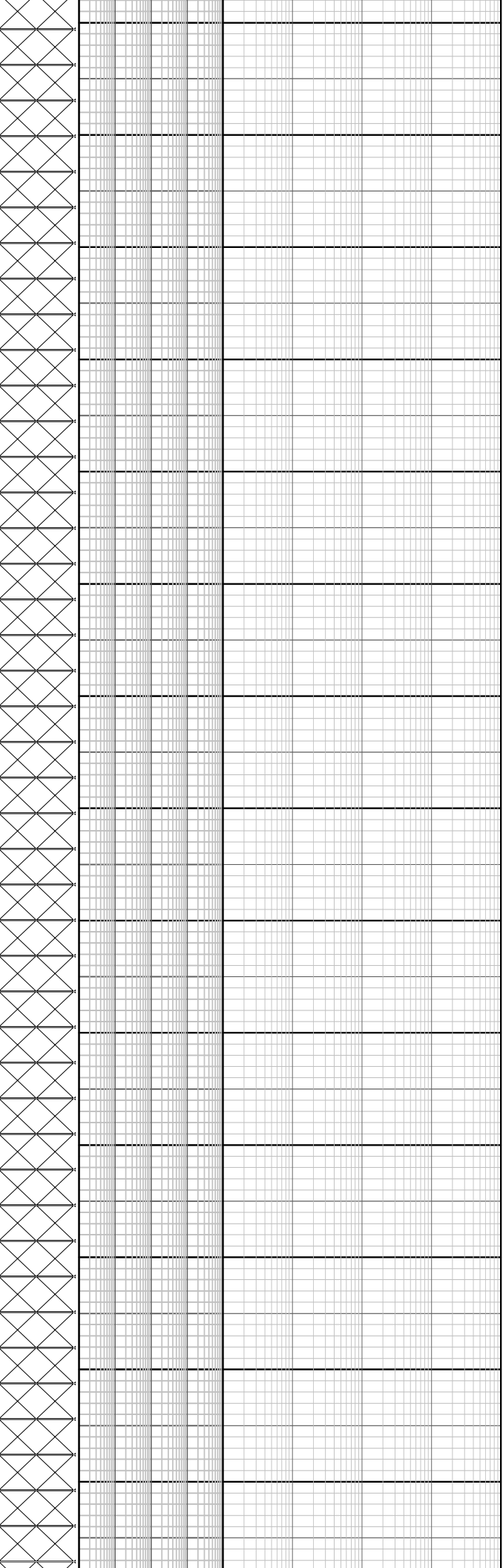
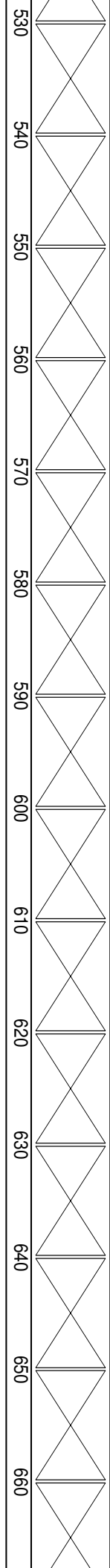
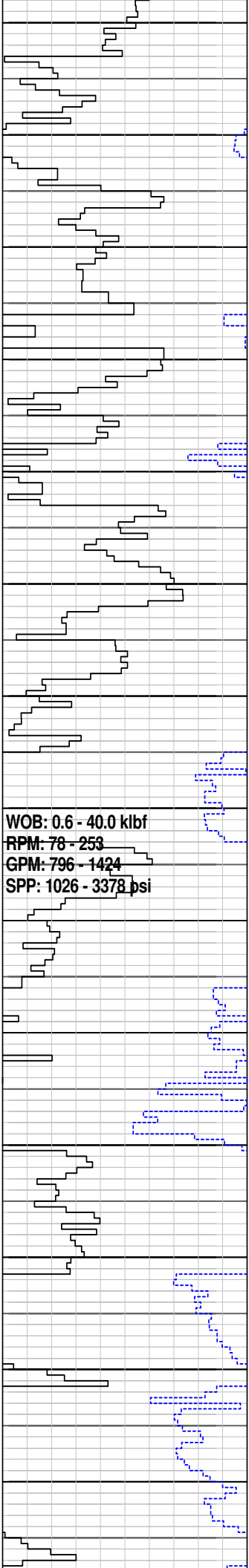
MD: 426.67m Inc: 6.45°
Azi: 150.06° TVD: 426.44m

MD: 455.70m Inc: 8.55°
Azi: 155.30° TVD: 455.22m

MD: 484.37m Inc: 10.63°
Azi: 155.06° TVD: 483.49m

Drill with seawater and hi-vis sweeps. Returns to Seabed.

MD: 513.87m Inc: 12.47°
Azi: 153.23° TVD: 512.39m



MD: 542.49m Inc: 15.01°
 Azi: 150.63° TVD: 540.19m

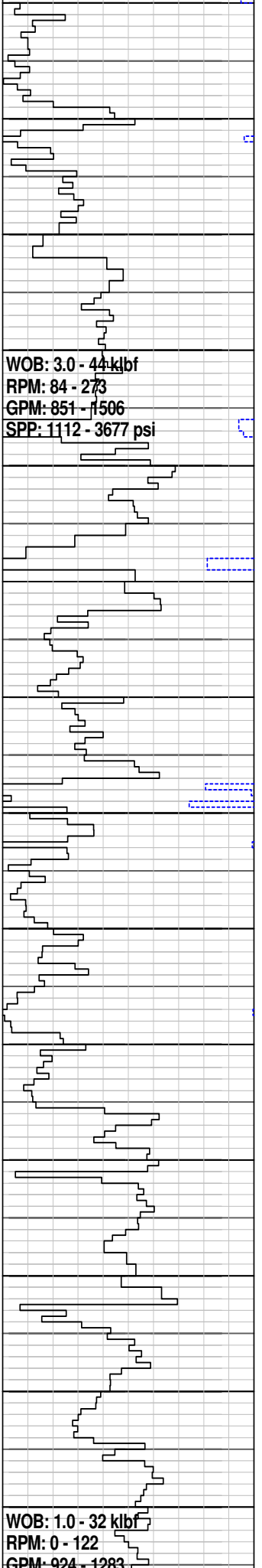
MD: 572.14m Inc: 17.86°
 Azi: 149.10° TVD: 568.62m

Drill with seawater and hi-vis
 sweeps. Returns to Seabed.

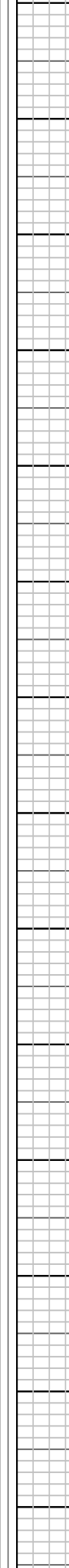
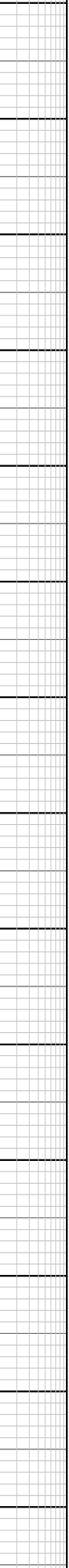
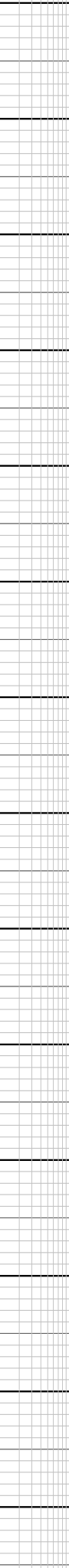
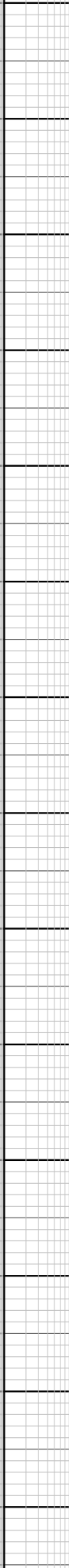
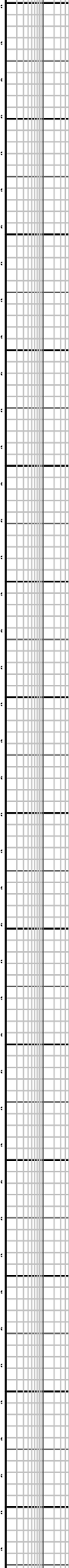
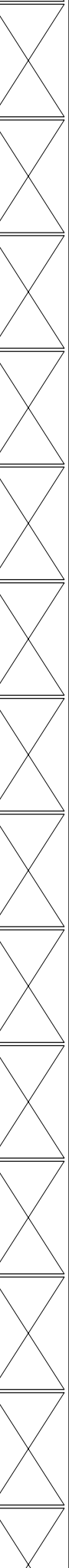
MD: 601.14m Inc: 20.61°
 Azi: 150.86° TVD: 596.00m

MD: 629.94m Inc: 23.75°
 Azi: 150.85° TVD: 622.67m

MD: 657.35m Inc: 27.63°
 Azi: 152.02° TVD: 647.36m



670
680
690
700
710
720
730
740
750
760
770
780
790
800



MD: 686.15m Inc: 28.92°
Azi: 155.03° TVD: 672.72m

Drill with seawater and hi-vis sweeps. Returns to Seabed.

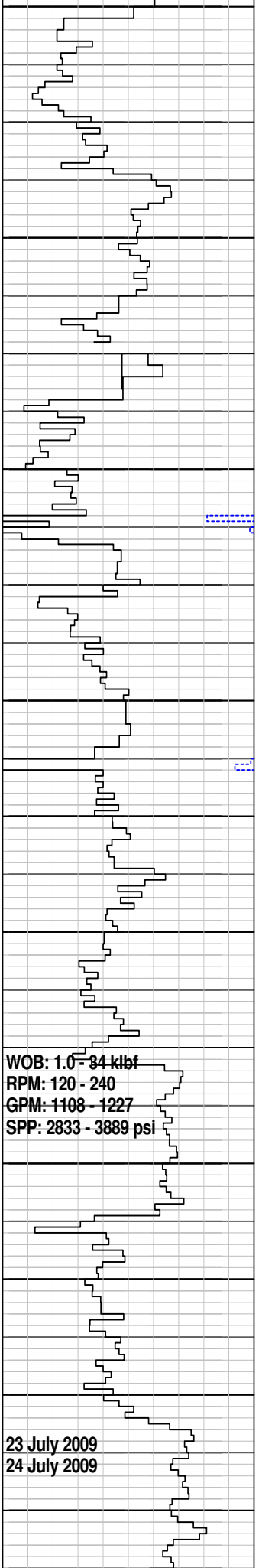
MD: 714.52m Inc: 30.23°
Azi: 156.28° TVD: 697.40m

MD: 742.58m Inc: 31.04°
Azi: 156.67° TVD: 721.54m

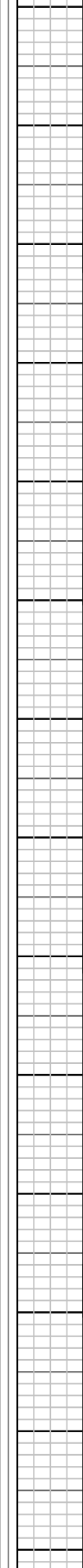
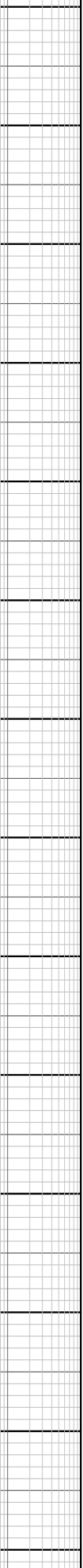
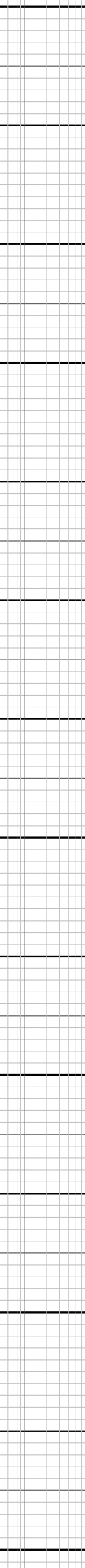
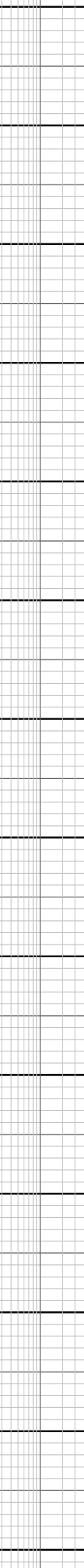
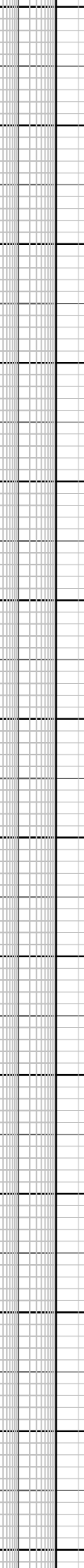
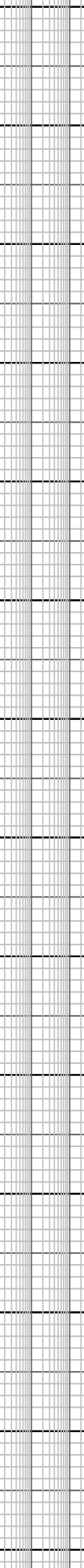
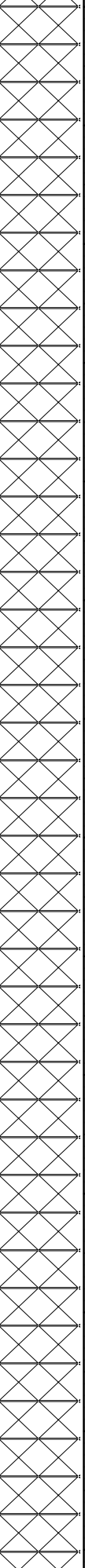
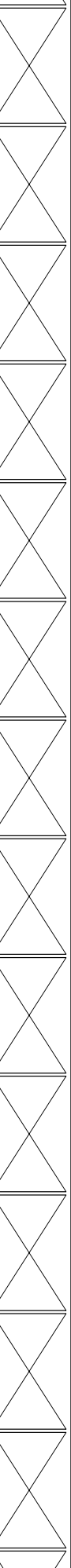
MD: 771.54m Inc: 32.48°
Azi: 157.40° TVD: 746.17m

Drill with seawater and hi-vis sweeps. Returns to Seabed.

MD: 799.88m Inc: 33.24°
Azi: 154.47° TVD: 769.98m



810
820
830
840
850
860
870
880
890
900
910
920
930
940



MD: 828.16m Inc: 34.09°
Azi: 149.77° TVD: 793.52m

MD: 856.81m Inc: 34.64°
Azi: 148.27° TVD: 817.16m

MD: 887.28m Inc: 36.54°
Azi: 149.29° TVD: 841.94m

Drill with seawater and hi-vis sweeps. Returns to Seabed.

MD: 916.73m Inc: 36.73°
Azi: 149.63° TVD: 865.58m

MD: 945.11m Inc: 36.90°

WOB: 1.0 - 84 klb
RPM: 120 - 240
GPM: 1108 - 1227
SPP: 2833 - 3889 psi

23 July 2009
24 July 2009

Azi: 150.11° TVD: 888.28m

MD: 974.40m Inc: 38.19°
Azi: 152.01° TVD: 911.49m

Drill with seawater and hi-vis sweeps. Returns to Seabed.

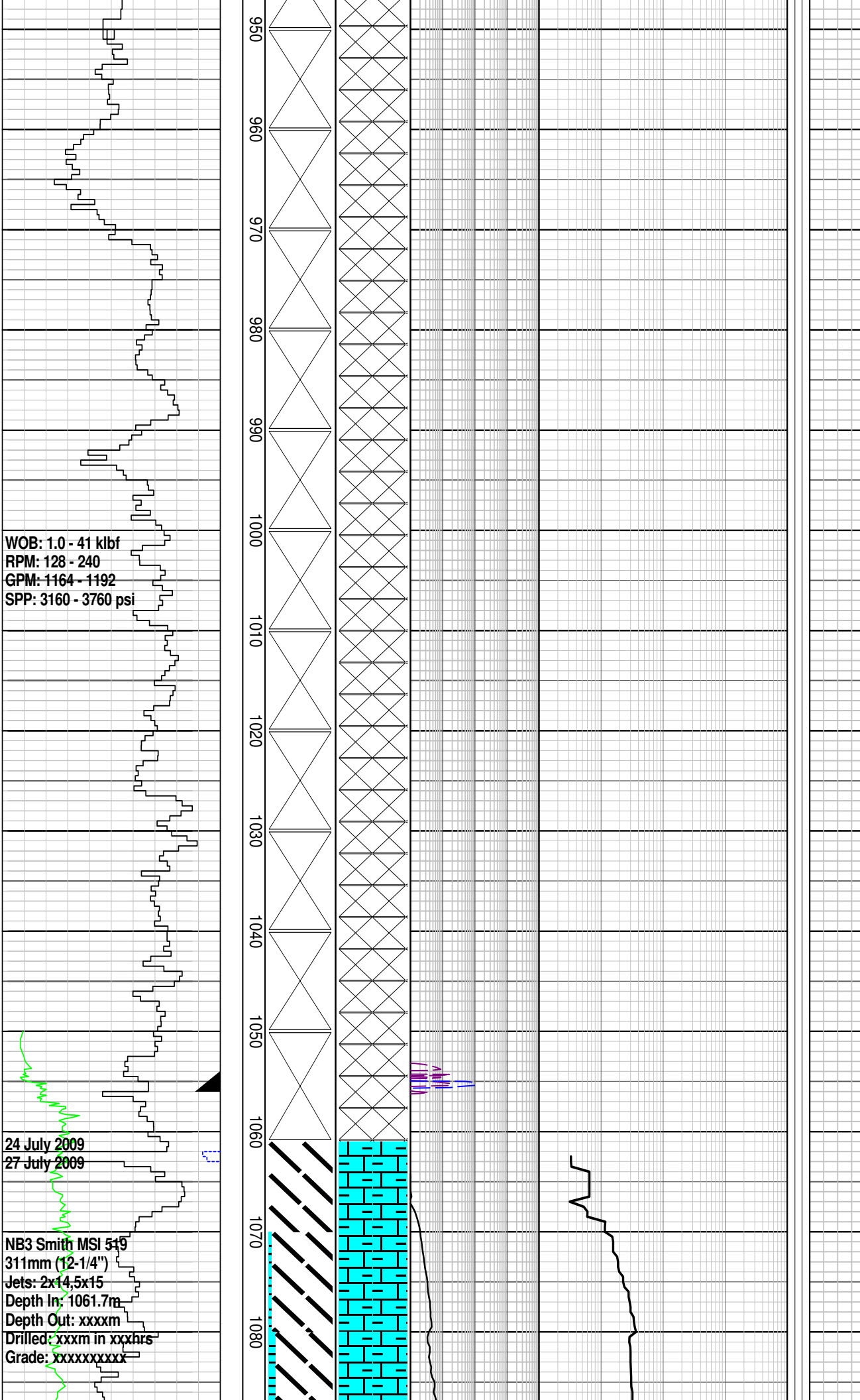
MD: 1003.53m Inc: 37.48°
Azi: 150.94° TVD: 934.50m

MD: 1032.80m Inc: 36.51°
Azi: 151.41° TVD: 957.88m

Set 340mm (13-3/8") casing shoe at 1056.6mMDRT

MD: 1060.99m Inc: 36.98°
Azi: 151.69° TVD: 984.29m

MARL: dom olv gry, com m lt gry-m gry, sft frm, occ mod hd, sbblykly-blky, abd calc cly, tr carb mat, tr y f ed



WOB: 1.0 - 41 klb
RPM: 128 - 240
GPM: 1164 - 1192
SPP: 3160 - 3760 psi

24 July 2009
27 July 2009

NB3 Smith MSI 519
311mm (12-1/4")
Jets: 2x14,5x15
Depth In: 1061.7m
Depth Out: xxxxm
Drilled: xxxm in xxxhrs
Grade: xxxxxxxxxx

tr carb mat, tr VLSU

MW 9.0 ppg FV 48
PV/YP 11/19 Gels 6/7/8
Sol% 5.1 CI 49k

MD: 1118.79m Inc: 38.76°
Azi: 150.48° TVD: 1029.91m

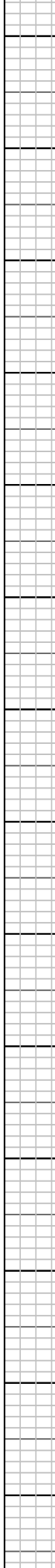
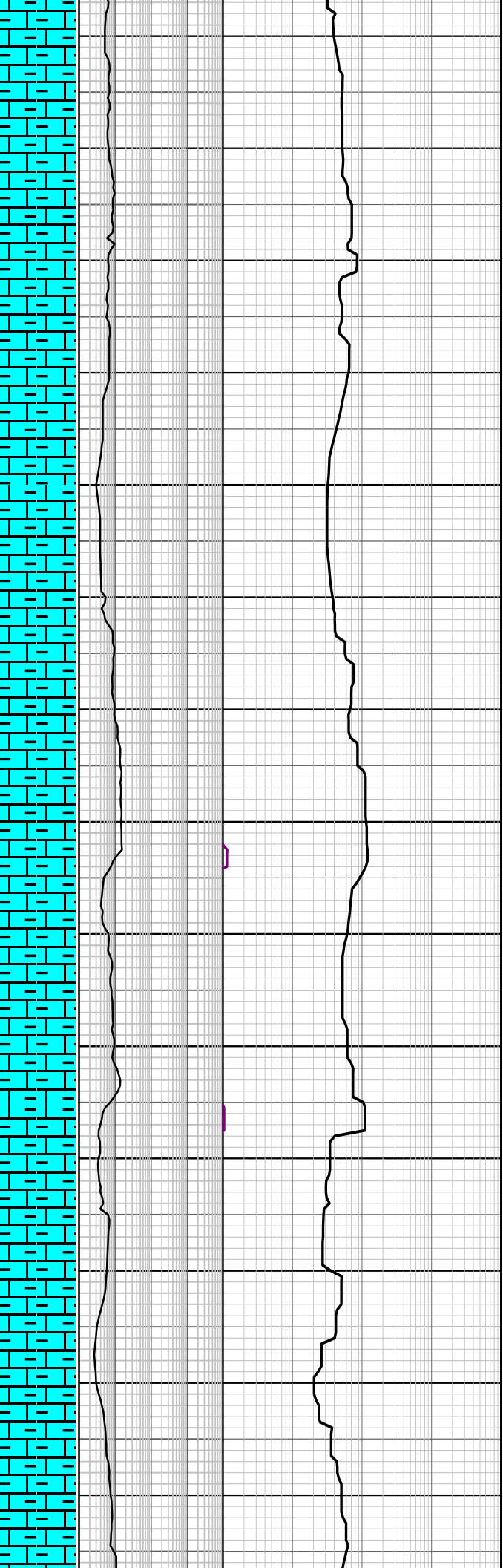
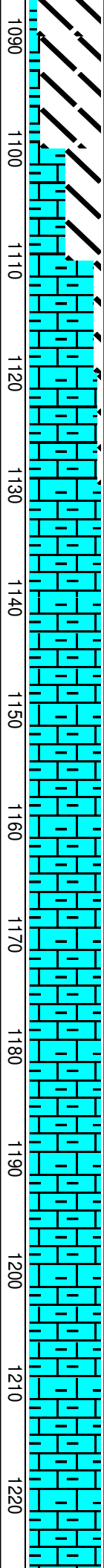
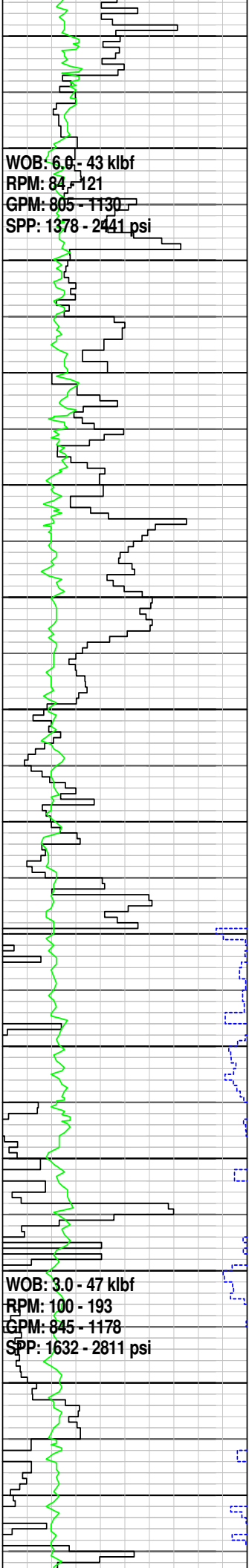
MARL: dom olv gry, com m lt
gry-m gry, frm-mod hd,
sbbkly-blky, abd calc cly, tr
carb mat

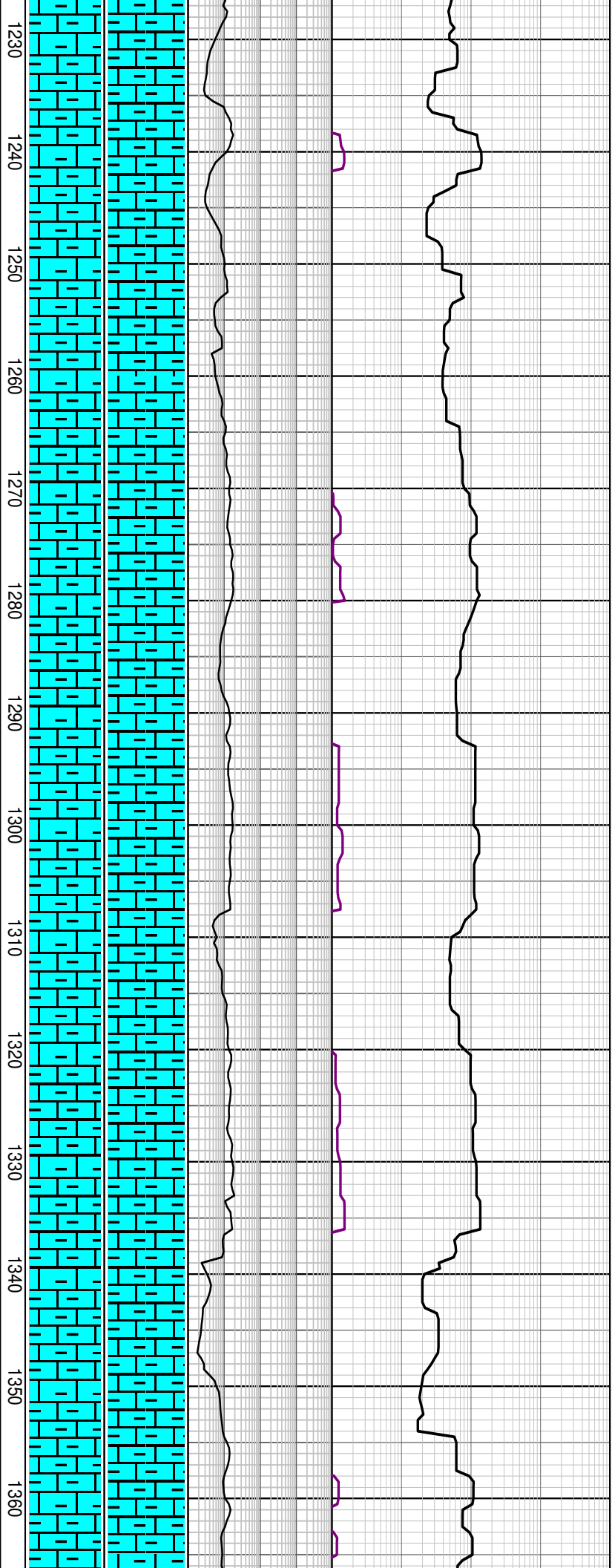
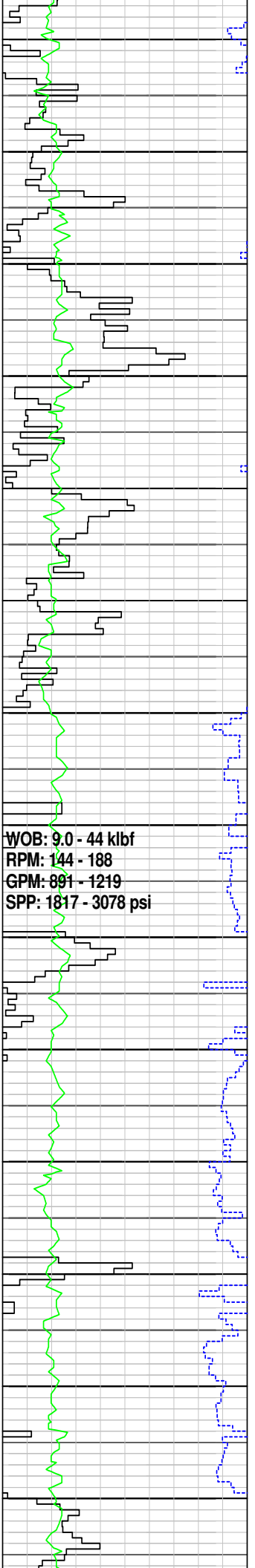
MD: 1148.08m Inc: 38.35°
Azi: 150.07° TVD: 1052.82m

MD: 1176.13m Inc: 36.43°
Azi: 148.80° TVD: 1075.11m

MARL: dom olv gry, com m lt
gry-m gry, frm-mod hd,
sbbkly-blky, abd calc cly, tr
carb mat

MD: 1205.74m Inc: 35.45°
Azi: 148.06° TVD: 1099.08m





MD: 1234.23m Inc: 35.74°
 Azi: 147.30° TVD: 1122.25m

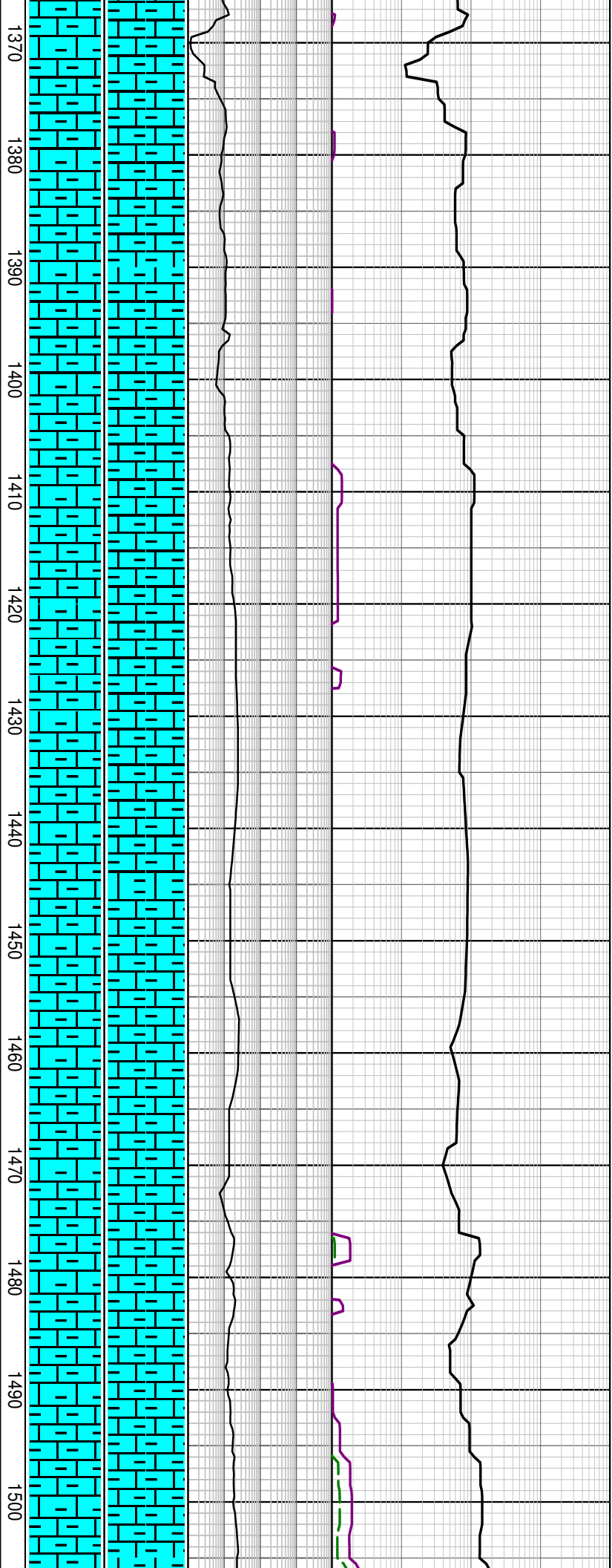
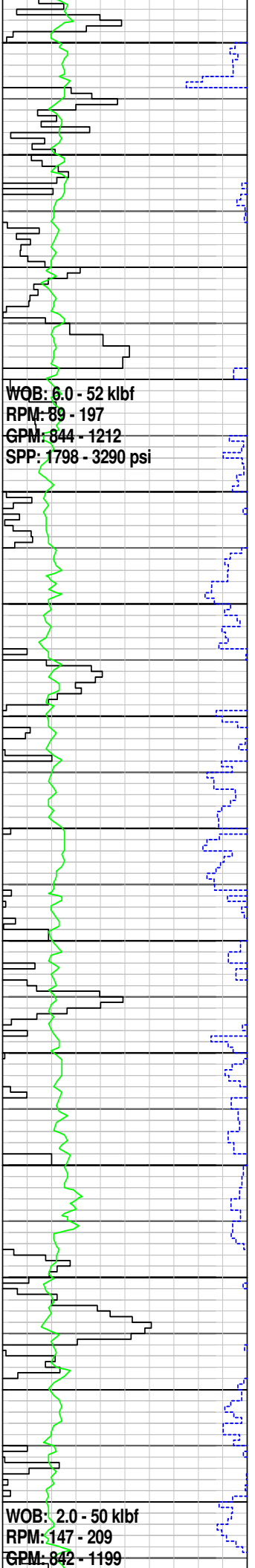
MARL: dom olv gry, occ v lt gry-m gry, frm-mod hd, sbblky-blky, abd calc cly, tr sil slt, tr blk lit frag, tr carb spks

MD: 1292.39m Inc: 35.16°
 Azi: 148.01° TVD: 1169.62m

MD: 1320.99m Inc: 34.65°
 Azi: 148.19° TVD: 1189.25m

MARL: dom lt olv gry-olv gry, occ m gry, frm-mod hd, sft i/p, sbblky-blky, abd calc cly, tr sil slt, tr blk lit frag, tr carb spks

MD: 1350.15m Inc: 35.16°
 Azi: 147.62° TVD: 1213.17m



MD: 1379.29m Inc: 34.46°
 Azi: 147.45° TVD: 1237.10m

MARL: dom lt olv gry-olv gry,
 occ m gry, frm-mod hd, dom
 mod hd, sbblky-blky, abd
 calc cly, tr sil slit, tr-rr carb
 mat

MD: 1407.09m Inc: 32.86°
 Azi: 146.85° TVD: 1260.24m

MD: 1436.33m Inc: 32.04°
 Azi: 146.56° TVD: 1284.91m

MARL: dom lt olv gry-olv gry,
 occ m gry, frm-mod hd, dom
 mod hd, sbblky-blky, abd
 calc cly, tr sil slit, tr-rr carb
 mat

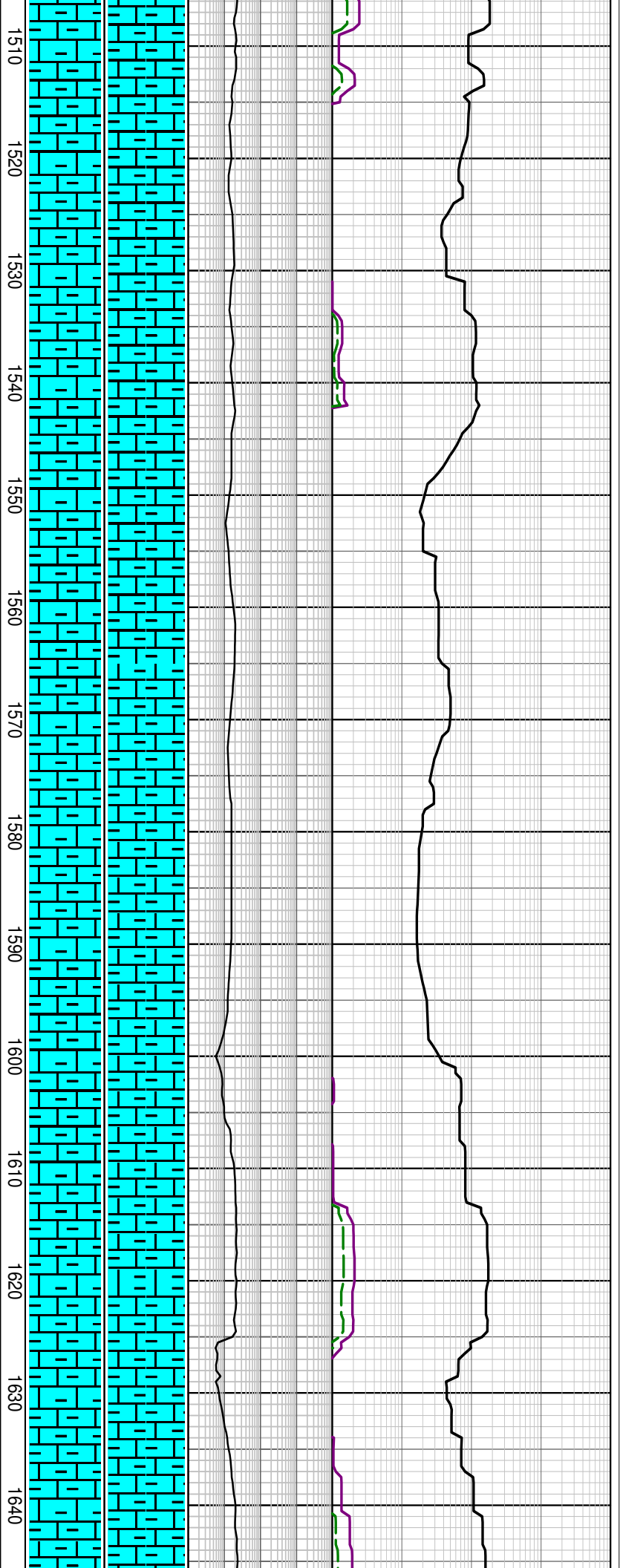
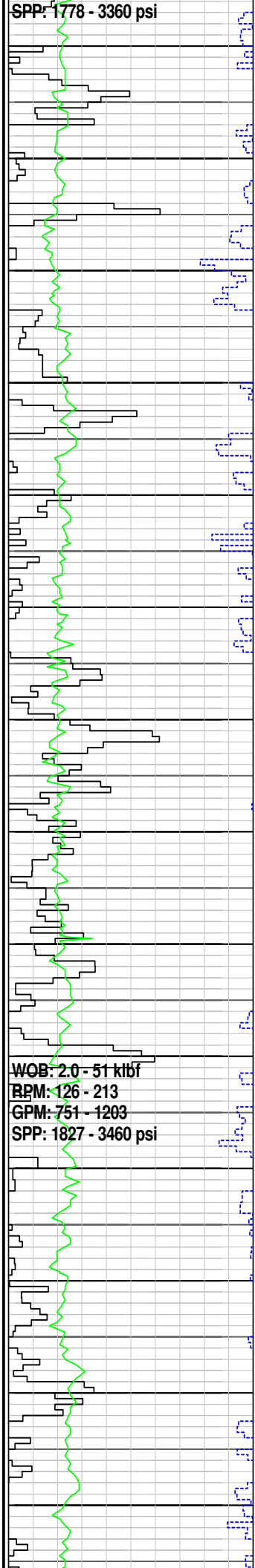
MD: 1465.22m Inc: 31.37°
 Azi: 147.89° TVD: 1309.49m

MD: 1493.86m Inc: 32.99°
 Azi: 152.10° TVD: 1333.72m

MARL: dom lt olv gry-olv gry,
 occ m gry, frm-mod hd, dom
 mod hd, sbblky-blky, abd
 calc cly, tr sil slit, tr-rr carb
 mat

SPP: 1778 - 3360 psi

WOB: 2.0 - 51 klbf
RPM: 126 - 213
GPM: 751 - 1203
SPP: 1827 - 3460 psi



MARL: dom m gry-olv gry,
occ m lt gry, frm-mod hd,
dom mod hd, sbblky-blky,
abd calc cly, tr sil slit, tr-rr
carb mat

MD: 1522.57m Inc: 33.53°
Azi: 156.05° TVD: 1357.74m

MD: 1551.08m Inc: 33.73°
Azi: 156.30° TVD: 1381.48m

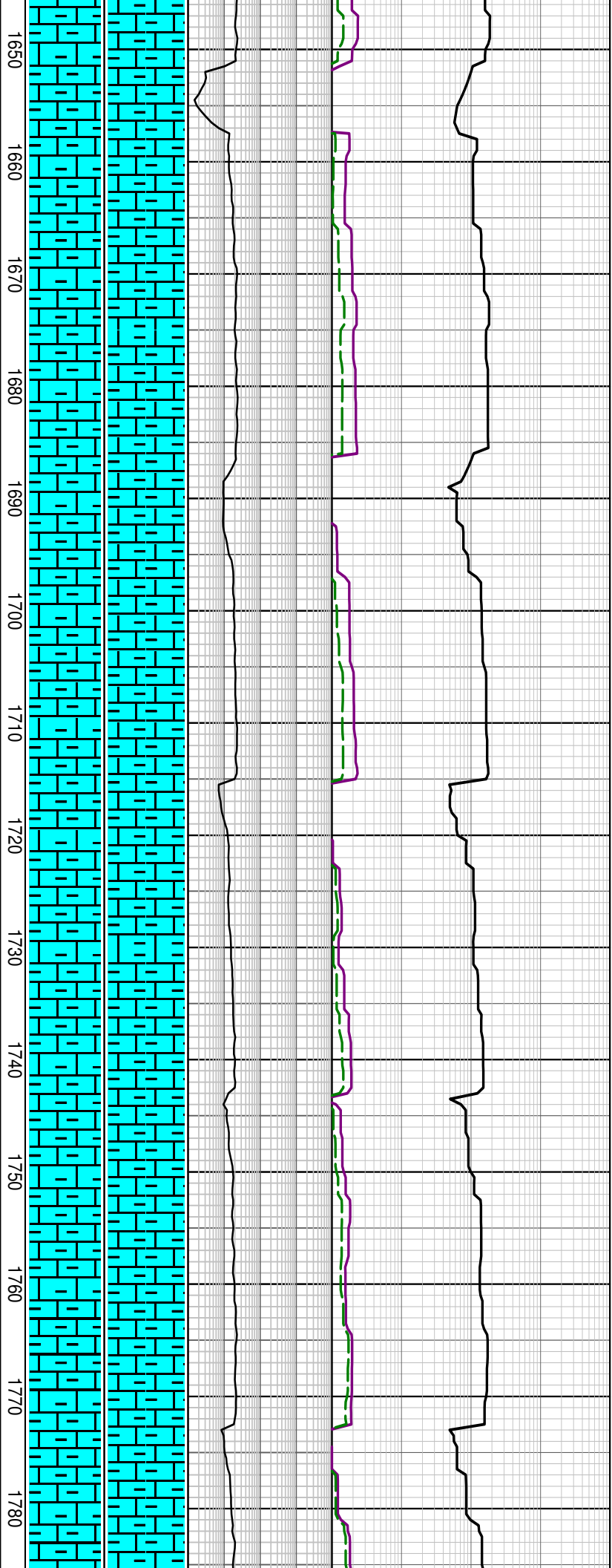
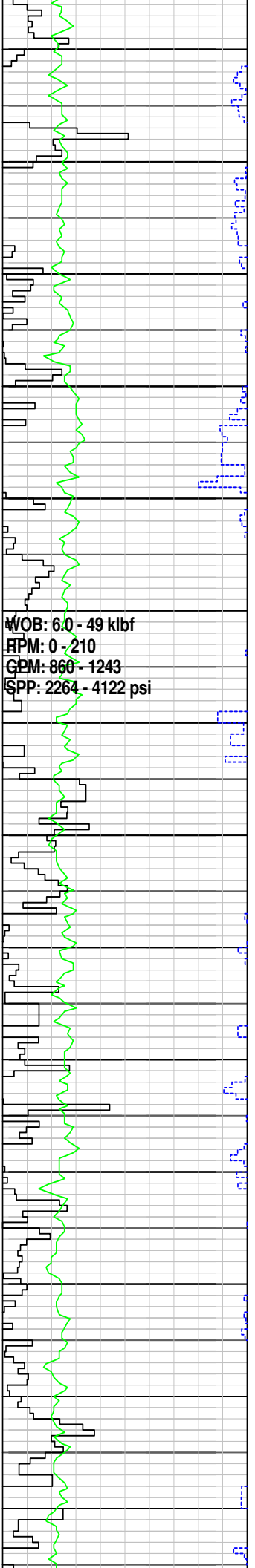
MARL: dom m gry-olv gry,
occ m lt gry, frm-mod hd,
dom mod hd, sbblky-blky,
abd calc cly, tr sil slit, tr-rr
carb mat

MD: 1579.74m Inc: 33.84°
Azi: 153.27° TVD: 1405.29m

MD: 1608.46m Inc: 35.27°
Azi: 150.47° TVD: 1428.95m

MARL: dom m gry-olv gry,
com m lt gry, frm-mod hd,
dom mod hd, sbblky-blky,
abd calc cly, tr sil slit, tr-rr
carb mat

MD: 1637.45m Inc: 36.72°
Azi: 150.18° TVD: 1452.40m



MD: 1666.26m Inc: 36.12°
 Azi: 150.25° TVD: 1475.59m

MARL: dom m gry-olv gry,
 com m lt gry, frm-mod hd,
 dom mod hd, sbblky-blky,
 abd calc cly, tr sil slt, tr-rr
 carb mat

MD: 1694.89m Inc: 39.06°
 Azi: 149.72° TVD: 1498.72m

MD: 1723.86m Inc: 36.07°
 Azi: 149.77° TVD: 1522.14m

MARL: dom m lt gry-lt olv
 gry, occ m gry, frm-mod hd,
 dom mod hd, sbblky-blky,
 25-30% calc cly, tr sil slt, tr-rr
 carb mat

MD: 1753.17m Inc: 36.60°
 Azi: 149.91° TVD: 1545.75m

MD: 1781.25m Inc: 36.45°
 Azi: 149.35° TVD: 1568.32m

WOB: 11 - 49 kJbf
RPM: 167 - 190
GPM: 824 - 1281
SPP: 2377 - 4110 psi

WOB: 10 - 40 kJbf
RPM: 147 - 196
GPM: 810 - 1161
SPP: 2617 - 4254 psi

1790
1800
1810
1820
1830
1840
1850
1860
1870
1880
1890
1900
1910
1920



MARL: dom m gry-olv gry, m lt gry, sft frm, occ mod hd, sbbkly-blky, 30% calc cly, tr calc slt, tr v f qtz grn, tr carb spks, tr blk lith

MD: 1810.10m Inc: 36.88°
Azi: 150.13° TVD: 1591.46m

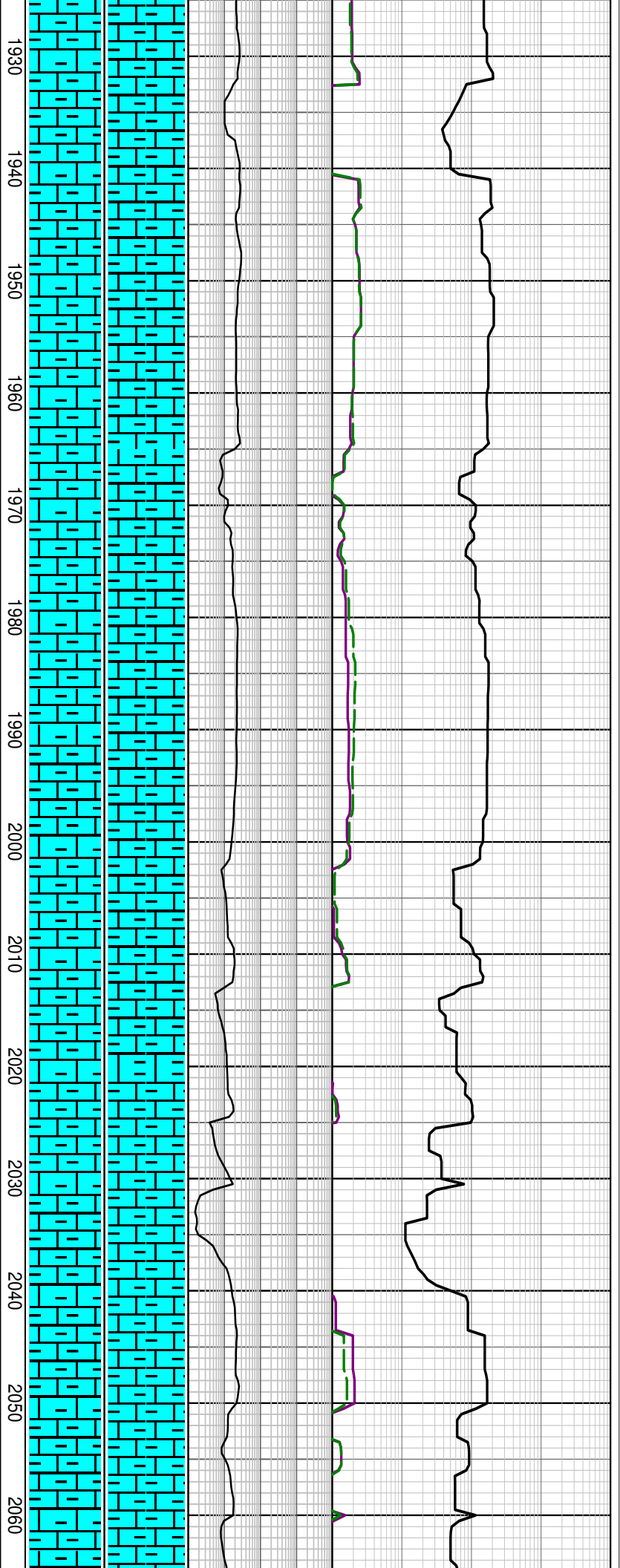
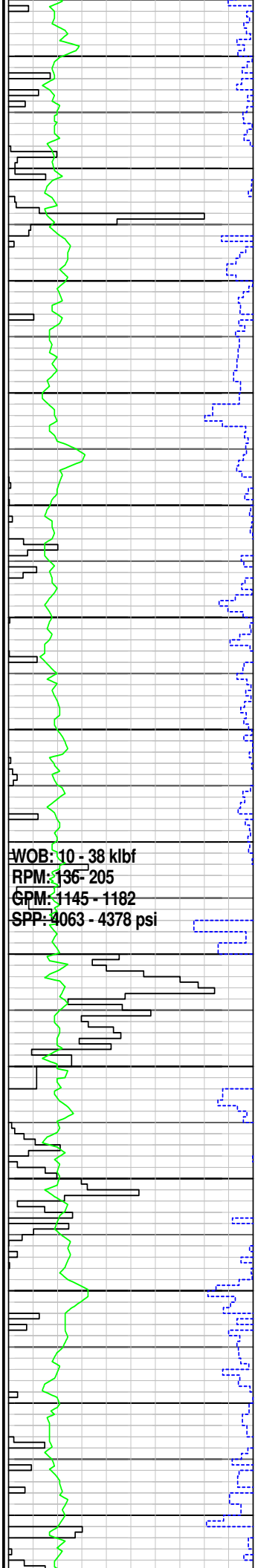
MD: 1839.26m Inc: 36.41°
Azi: 151.48° TVD: 1614.85m

MARL: dom m gry-olv gry, m lt gry, sft frm, occ mod hd, sbbkly-blky, 30% calc cly, tr calc slt, tr v f qtz grn, tr carb spks, tr blk lith

MD: 1868.17m Inc: 36.44°
Azi: 151.16° TVD: 1638.12m

MD: 1896.82m Inc: 36.54°
Azi: 153.07° TVD: 1661.15m

MARL: dom m gry-olv gry, m lt gry, sft frm, occ mod hd, sbbkly-blky, 25-30% calc cly, tr calc slt, tr v f qtz grn, tr carb spks, tr blk lith



MD: 1926.08m Inc: 36.62°
 Azi: 152.97° TVD: 1684.65m

MD: 1954.85m Inc: 36.48°
 Azi: 152.04° TVD: 1707.76m

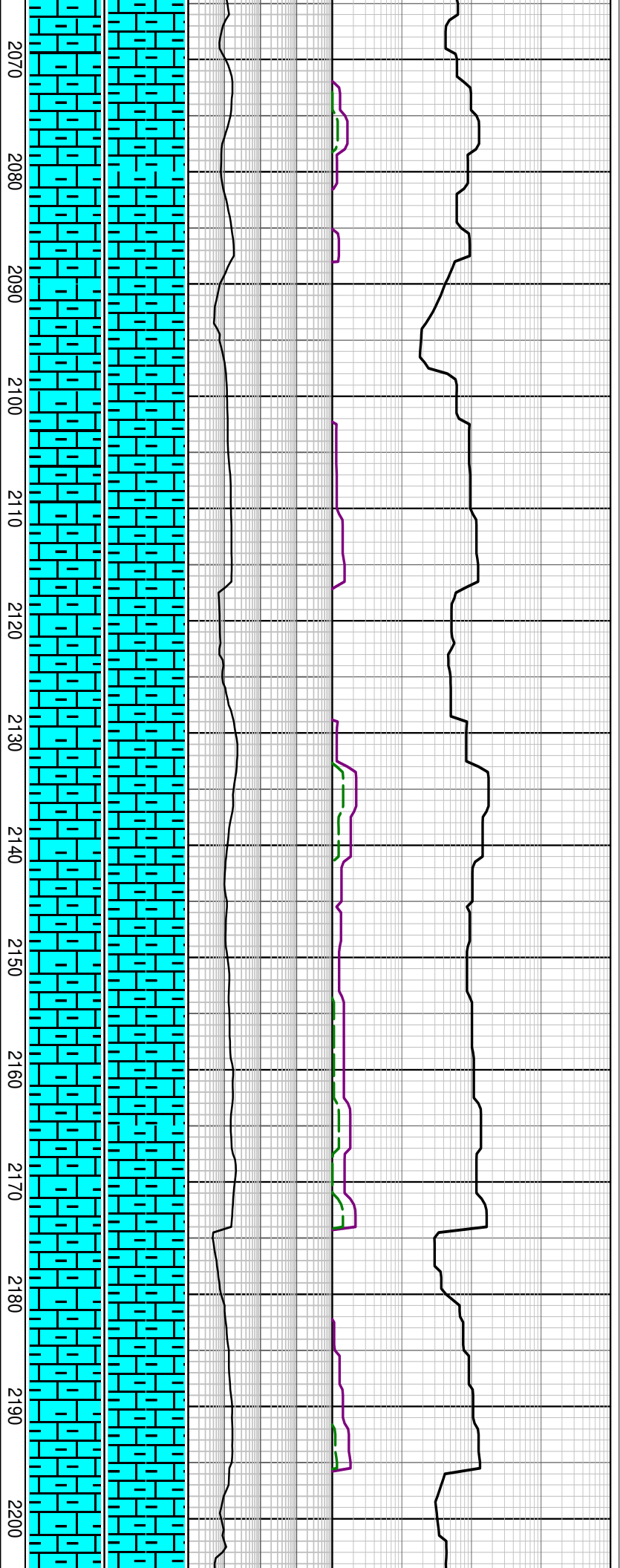
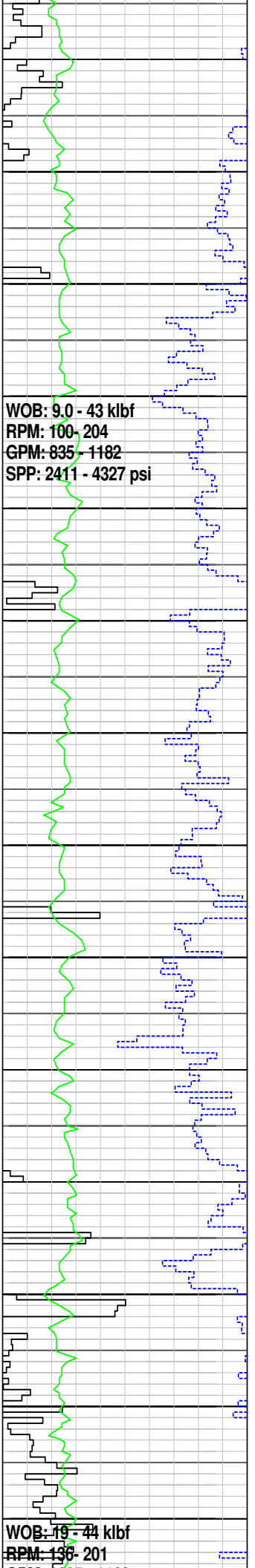
MARL: dom m gry-olv gry, m
 lt gry, sft frm, occ mod hd,
 sbbkly-blky, 25-30% calc cly,
 tr calc slt, tr v f qtz grn, tr pyr,
 tr carb spks, tr blk lith

MD: 1983.67m Inc: 36.20°
 Azi: 151.44° TVD: 1730.98m

MD: 2012.91m Inc: 36.92°
 Azi: 150.95° TVD: 1754.47m

MARL: dom m gry, lt olv
 gry-olv gry, occ m lt gry,
 sft frm, occ mod hd,
 sbbkly-blky, 25-30% calc cly,
 tr calc slt, tr pyr, tr carb spks,
 tr blk lith

MD: 2041.28m Inc: 36.11°
 Azi: 150.52° TVD: 1777.26m



MD: 2070.25m Inc: 36.28°
 Azi: 150.15° TVD: 1800.65m

MARL: dom m gry, lt olv gry-olv gry, occ m lt gry, sft-frm, occ mod hd, sbblky-blky, 25-30% calc cly, tr calc slt, tr pyr, tr carb spks, tr blk lith

MD: 2099.29m Inc: 36.98°
 Azi: 149.86° TVD: 1823.95m

MD: 2127.60m Inc: 37.51°
 Azi: 149.66° TVD: 1846.48m

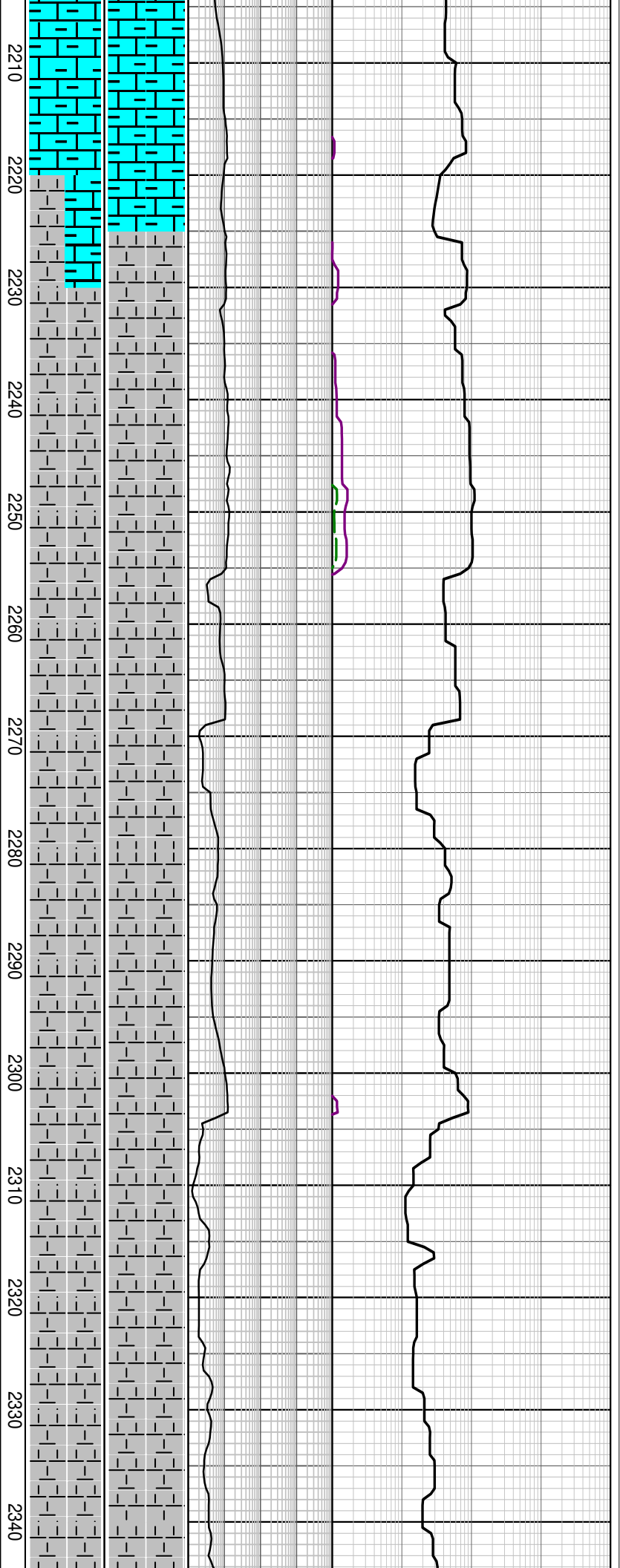
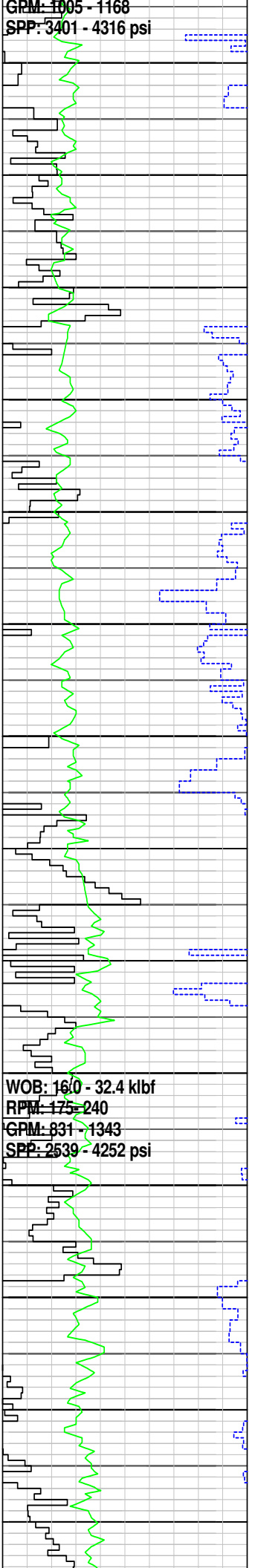
MD: 2156.62m Inc: 37.88°
 Azi: 149.51° TVD: 1869.44m

MARL: dom pl yeslh brn, olv gry, frm-mod hd, fri i/p, dom mod hd, sbblky-blky, 30-35% calc cly, tr calc slt, tr pyr, tr carb spks, tr blk lith

MD: 2184.65m Inc: 38.11°
 Azi: 149.41° TVD: 1891.53m

GPM: 1005 - 1168
SPP: 3401 - 4316 psi

WOB: 160 - 32.4 kbf
RPM: 175 - 240
GPM: 831 - 1343
SPP: 2539 - 4252 psi



MD: 2213.84m Inc: 38.43°
Azi: 149.62° TVD: 1914.45m

CALCAREOUS CLAYSTONE:
lt gry-m dk gry, mod hd, frm
i/p, sbblky-blky, 75% calc cly,
mnr sil stl, tr pyr, tr foram, tr
glauc

MD: 2242.40m Inc: 38.29°
Azi: 150.80° TVD: 1936.84m

MW 9.6 ppg FV 52
PV/YP 16/26 Gels 9/11/13
Sol% 6.3 CI 38k

MD: 2270.15m Inc: 37.73°
Azi: 151.59° TVD: 1958.71m

CALCAREOUS CLAYSTONE:
m lt gry-m gry, sft-mod hd,
sbblky-blky, 60% calc cly,
mnr sil stl, tr pyr, tr foram, tr
glauc

MD: 2299.33m Inc: 37.92°
Azi: 152.77° TVD: 1981.76m

MD: 2328.31m Inc: 37.50°
Azi: 152.72° TVD: 2004.69m

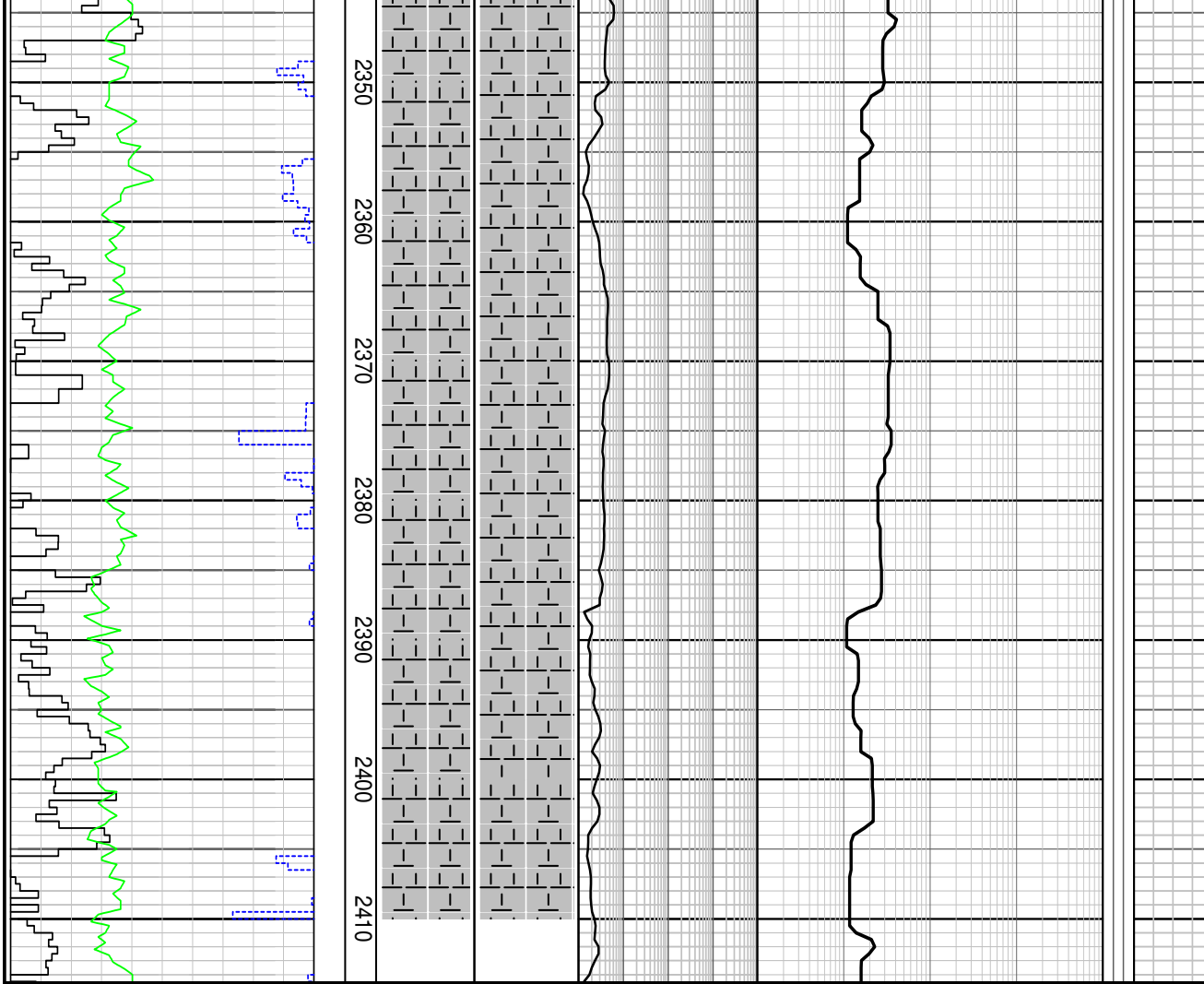
CALCAREOUS CLAYSTONE:
m lt gry-m gry, sft-mod hd,

sbbkly-blky, 60% calc cly,
mnr sil slt, tr pyr, tr foram, tr
glauc

MD: 2356.86m Inc: 37.14°
Azi: 152.63° TVD: 2027.39m

MD: 2385.32m Inc: 36.95°
Azi: 152.51° TVD: 2050.11m

CALCAREOUS CLAYSTONE:
m lt gry-m gry, sft-mod hd,
sbbkly-blky, 60% calc cly, tr
sil slt, tr pyr, tr foram, tr glauc



FORMATION EVALUATION LOG

| ROP (m/hr) | | CORE | CUTTINGS LITHOLOGY | INTERPRETED LITHOLOGY | TOTAL GAS (%) | | CHROMATOGRAPH | | | | | FLUORESCENCE | CALCIMETRY | LITHOLOGY / REMARKS |
|-------------------|-----|-----------------|--------------------|-----------------------|-----------------------|--------|-----------------------------|-----|-------------|------------|-------------|--------------|------------|---------------------|
| 100 | 50 | | | | 0.1 | 1 | 10 | 100 | Methane ppm | Ethane ppm | Propane ppm | | | |
| ROP BACKUP (m/hr) | | MD meters 1:500 | | | Resistivity (Deep) | | | | | | | P F G | | |
| 100 | 50 | | | | 10 | 100000 | | | | | | | | |
| Gamma Ray | | | | | ohmm | | | | | | | | | |
| 0 | 200 | | | | Resistivity (Shallow) | | | | | | | | | |
| API | | | | | ohmm | | | | | | | | | |
| | | | | | | | 100 1000 10000 100000 | | | | | | | |