

Company: **Esso Australia Pty Ltd.**

Well: **WFK W 27a**

Field: **Bass Strait**

Rig: **453 / Prod 3**

Country: **Australia**

Junk basket

PGGT-D GR / CCL

Max-R setting record

LOCATION

Gippsland basin

West king fish

Prod 3

Elev.: K.B. 33.4 m

G.L. -76.1 m

D.F. 33.4 m

Permanent Datum: _____

Mean sea level _____

Elev.: 0 m _____

Log Measured From: _____

Drill floor _____

33.4 m above Perm. Datum

Drilling Measured From: _____

Rotary table _____

State: Victoria

Max. Well Deviation 44 deg

Longitude E 148 6 20.022

Latitude S 38 35 34.851

Rig: 453 / Prod 3

Field: Bass Strait

Location: Gippsland basin

Well: WFK W 27a

Company: Esso Australia Pty Ltd.

Logging Date	29-Jul-2006							
Run Number	1							
Depth Driller	3093 m							
Schlumberger Depth	3020.5 m							
Bottom Log Interval	2986.1 m							
Top Log Interval	2986.1 m							
Casing Fluid Type	Brine							
Salinity								
Density	0.8 g/cm3							
Fluid Level	0 m							
BIT/CASING/TUBING STRING								
Bit Size	8.500 in							
From	0 m							
To	3093 m							
Casing/Tubing Size	7.000 in							
Weight	26 lbm/ft							
Grade	L-80							
From	0 m							
To	3093 m							
Maximum Recorded Temperatures								
Logger On Bottom	29-Jul-2006		Time		16:15			
Unit Number	41	Location		AUSL				
Recorded By	Owen Darby							
Witnessed By	Tony Bassett & Bim Steel							

PVT DATA				Run 1	Run 2	R
Oil Density						
Water Salinity						
Gas Gravity						
Bo						
Bw						
1/Bg						
Bubble Point Pressure						
Bubble Point Temperature						
Solution GOR						
Maximum Deviation				44 deg		
CEMENTING DATA						
Primary/Squeeze				Primary		
Casing String No						
Lead Cement Type						
Volume						
Density						
Water Loss						
Additives						
Tail Cement Type						
Volume						
Density						
Water Loss						
Additives						
Expected Cement Top						
Logging Date						
Run Number						
Depth Driller						
Schlumberger Depth						
Bottom Log Interval						
Top Log Interval						
Casing Fluid Type						
Salinity						
Density						
Fluid Level						
BIT/CASING/TUBING STRING						
Bit Size						
From						
To						
Casing/Tubing Size						
Weight						
Grade						
From						
To						
Maximum Recorded Temperatures						
Logger On Bottom						
Unit Number						
Recorded By						
Witnessed By						

Date Created: 15-AUG-2006 14:38:16

Logging Cable

Type:	7-46P
Serial Number:	76075
Length:	7315.20 M
Conveyance Method:	Wireline
Rig Type:	Offshore_Fixed

Log Sequence:	Subsequent Log In the Well
Reference Log Name:	Precision dual laterolog-GR-density-neutron
Reference Log Run Number:	One
Reference Log Date:	26-JUL-2006

1. Used IDW as primary depth control
2. Used Z-Chart as secondary depth control
3. Correlated to Precision dual laterolog provided by client
- 4.
- 5.
- 6.

THE USE OF AND RELIANCE UPON THIS RECORDED-DATA BY THE HEREIN NAMED COMPANY (AND ANY OF ITS AFFILIATES, PARTNERS, REPRESENTATIVES, AGENTS, CONSULTANTS AND EMPLOYEES) IS SUBJECT TO THE TERMS AND CONDITIONS AGREED UPON BETWEEN SCHLUMBERGER AND THE COMPANY, INCLUDING: (a) RESTRICTIONS ON USE OF THE RECORDED-DATA; (b) DISCLAIMERS AND WAIVERS OF WARRANTIES AND REPRESENTATIONS REGARDING COMPANY'S USE OF AND RELIANCE UPON THE RECORDED-DATA; AND (c) CUSTOMER'S FULL AND SOLE RESPONSIBILITY FOR ANY INFERENCE DRAWN OR DECISION MADE IN CONNECTION WITH THE USE OF THIS RECORDED-DATA.

OTHER SERVICES2
OS1:
OS2:
OS3:
OS4:
OS5:

REMARKS: RUN NUMBER 2

Objective:
RIH with a GR/ CCL, junk basket and a 6" gauge ring attached to HUD, advise companyman of depth reached, which was 3020.2m MDKB
RIH with Max-R perforating BHA & GR/CCL tool. Correlate

AH-283
AH-283 5002

AH-Junk basket
AH-Junk basket

AH-6" Gauge ring

TOOL BOTTOM

MAXIMUM STRING DIAMETER 6.00 IN
MEASUREMENTS RELATIVE TO TOOL ZERO
ALL LENGTHS IN METERS

2.35

2.04

0.06

AH-HSD Gun
AH-HSD Gun

AH-Bottom nose

TOOL BOTTOM

MAXIMUM STRING DIAMETER 5.75 IN
MEASUREMENTS RELATIVE TO TOOL ZERO
ALL LENGTHS IN METERS

5.97

0.13

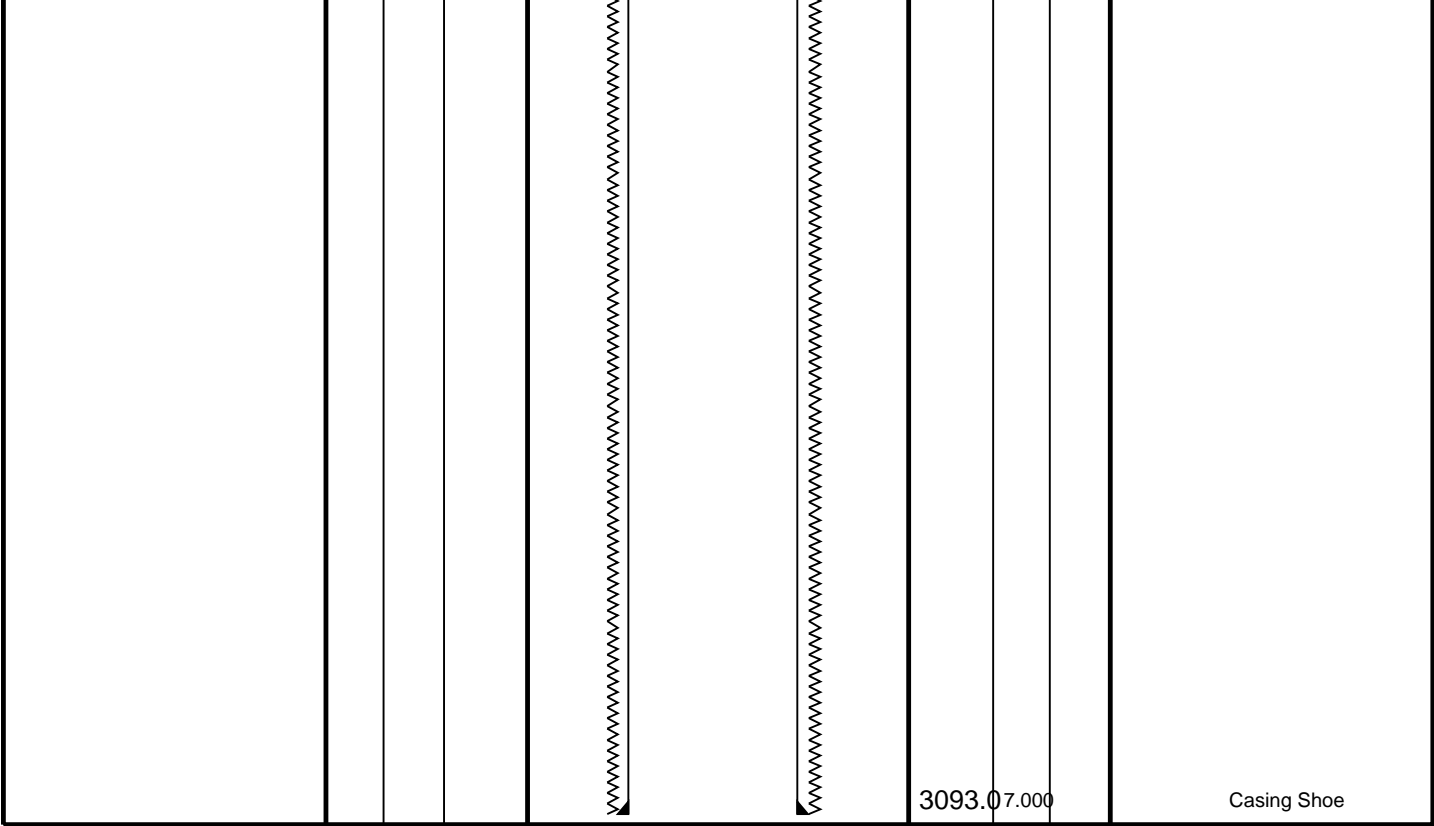
Client: Esso Australia Pty Ltd.
Well: WFK W-27a
Field: Bass Strait
State: Victoria
Country: Australia

7/29/2006

Rig Name: 453 / West king fish

Elevation: 33.4 m

Production String	(in)		(m)	Well Schematic	(m)		(in)	Casing String
	OD	ID	MD		MD	OD	ID	
					0.0	12.000		Borehole Segment
						10.750		Casing String
					895.0	10.750		Casing Shoe
					895.0	8.500		Borehole Segment
					895.0	10.750	107.000	Liner Hanger
						7.000		Casing String



3093.07.000

Casing Shoe



Job Events Summary

MAXIS Field Log

Schlumberger Job Event Summary

	Time	Elapsed Time	Depth (M)	File
Simulated Log	29-Jul-2006 13:46	000:05		PERFO_007LUP
Op check tool string				
Rig Up Started	29-Jul-2006 14:45			
Log Pass (up)	29-Jul-2006 16:09	000:09	3020.3 – 2948.0	PERFO_015LUP
Junk Basket pass				
Simulated Log	29-Jul-2006 17:32	000:02		PERFO_023LUP
Hot check				
Log Pass (up)	29-Jul-2006 19:58	000:06	3000.3 – 2937.1	PERFO_033LUP
Correlation for MAX-R				
Log Pass (up)	29-Jul-2006 20:16	000:12	3000.0 – 2920.6	PERFO_036LUP
Setting pass				
Rig Down Completed	29-Jul-2006 21:30			

Schlumberger

Operational Summary Listing

MAXIS Field Log

PERFO2 Operational Summary Listing

Device	Status	Req Depth (M)	Obs Depth (M)	Time Used
GUN1	Used	2996.7	2996.7	Sat Jul 29 20:19:27 2006

Schlumberger

MAX-R
Setting Pass

MAXIS Field Log

Company: Esso Australia Pty Ltd. Well: WFK W 27a

Output DLIS Files

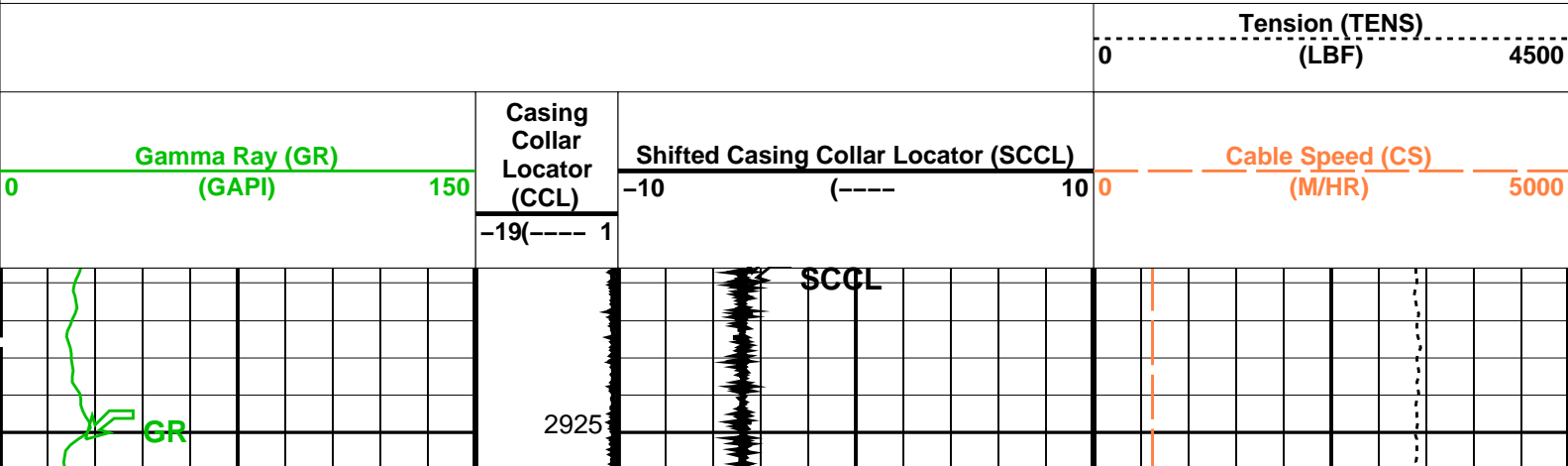
DEFAULT	PERFO_036LUP	FN:35	PRODUCER	29-Jul-2006 20:16
---------	--------------	-------	----------	-------------------

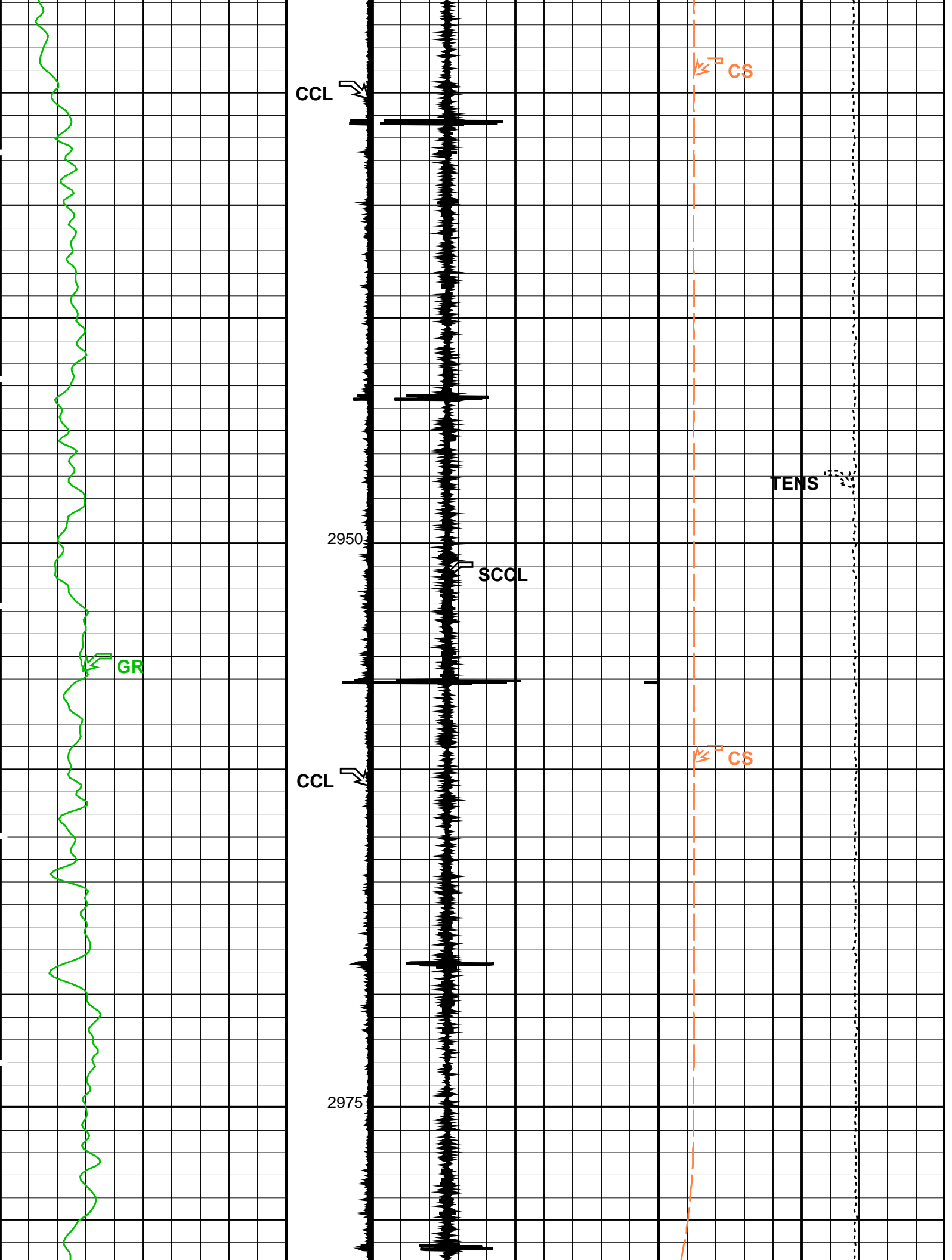
OP System Version: 14C0-302
MCM

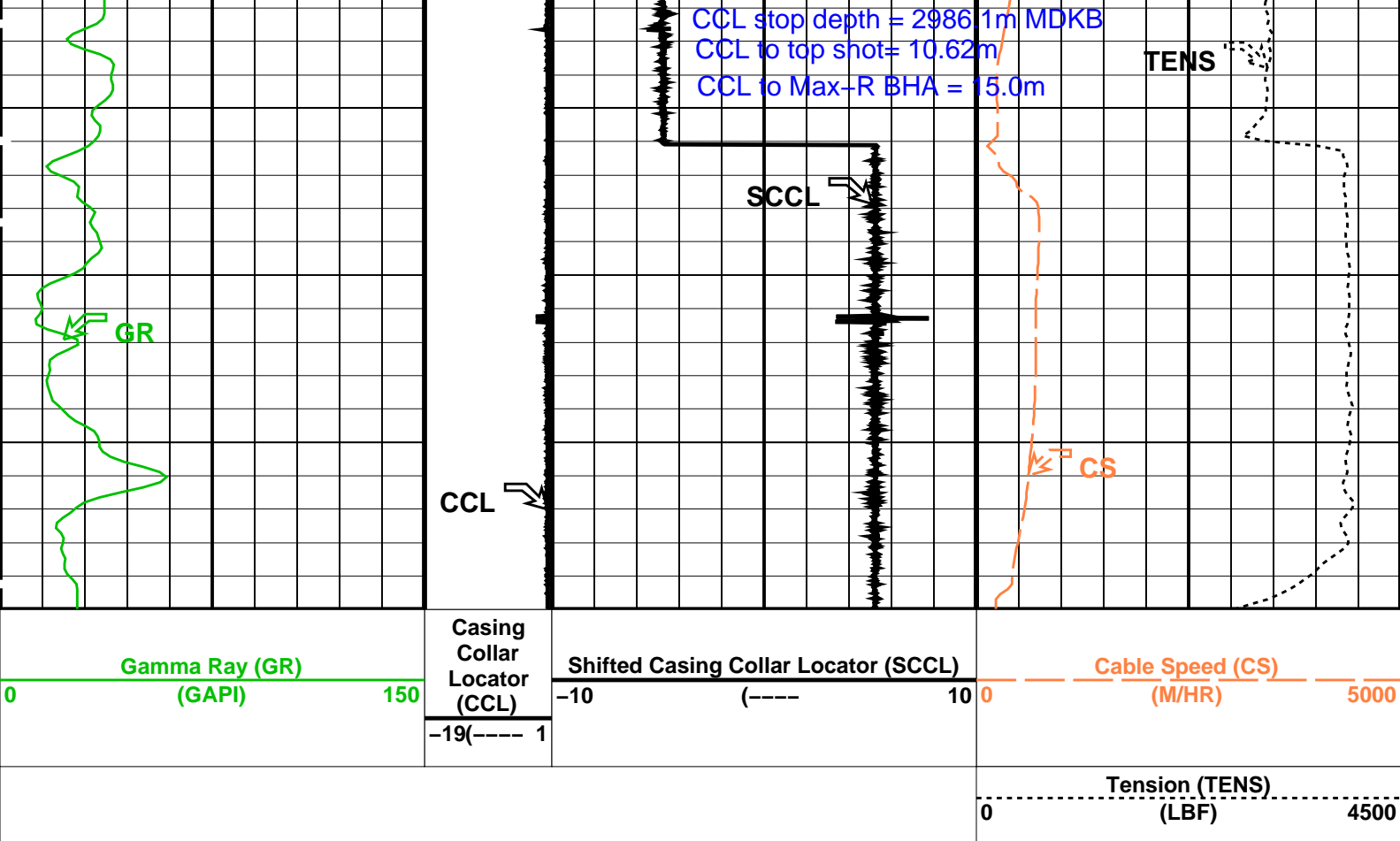
PGGT-D	14C0-302	SHM_GUN	14C0-302
--------	----------	---------	----------

PIP SUMMARY

Time Mark Every 60 S







PIP SUMMARY				
Time Mark Every 60 S				
Format: PERFO		Vertical Scale: 1:200		Graphics File Created: 29-Jul-2006 20:16
OP System Version: 14C0-302				
MCM				
PGGT-D	14C0-302	SHM_GUN	14C0-302	
Output DLIS Files				
DEFAULT	PERFO_036LUP	FN:35	PRODUCER	29-Jul-2006 20:16



MAX-R Correlation Pass

MAXIS Field Log

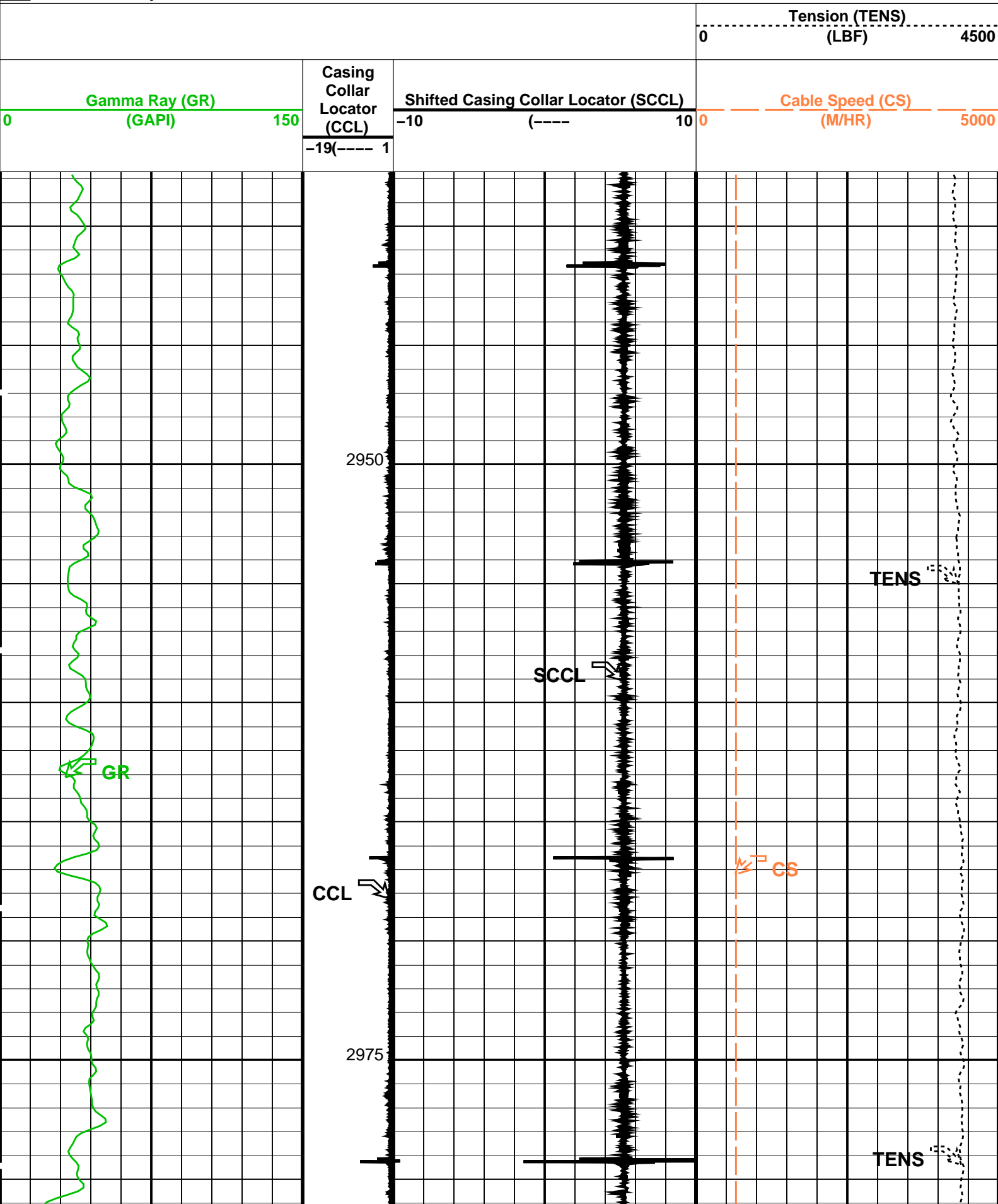
Company: Esso Australia pty Ltd.					Well: WFK W 27a	
Input DLIS Files						
DEFAULT	PERFO_033LUP	FN:32	PRODUCER	29-Jul-2006 19:58	3000.3 M	2937.1 M
Output DLIS Files						
DEFAULT	PERFO_034PUP	FN:33	PRODUCER	29-Jul-2006 20:07	3000.5 M	2937.7 M

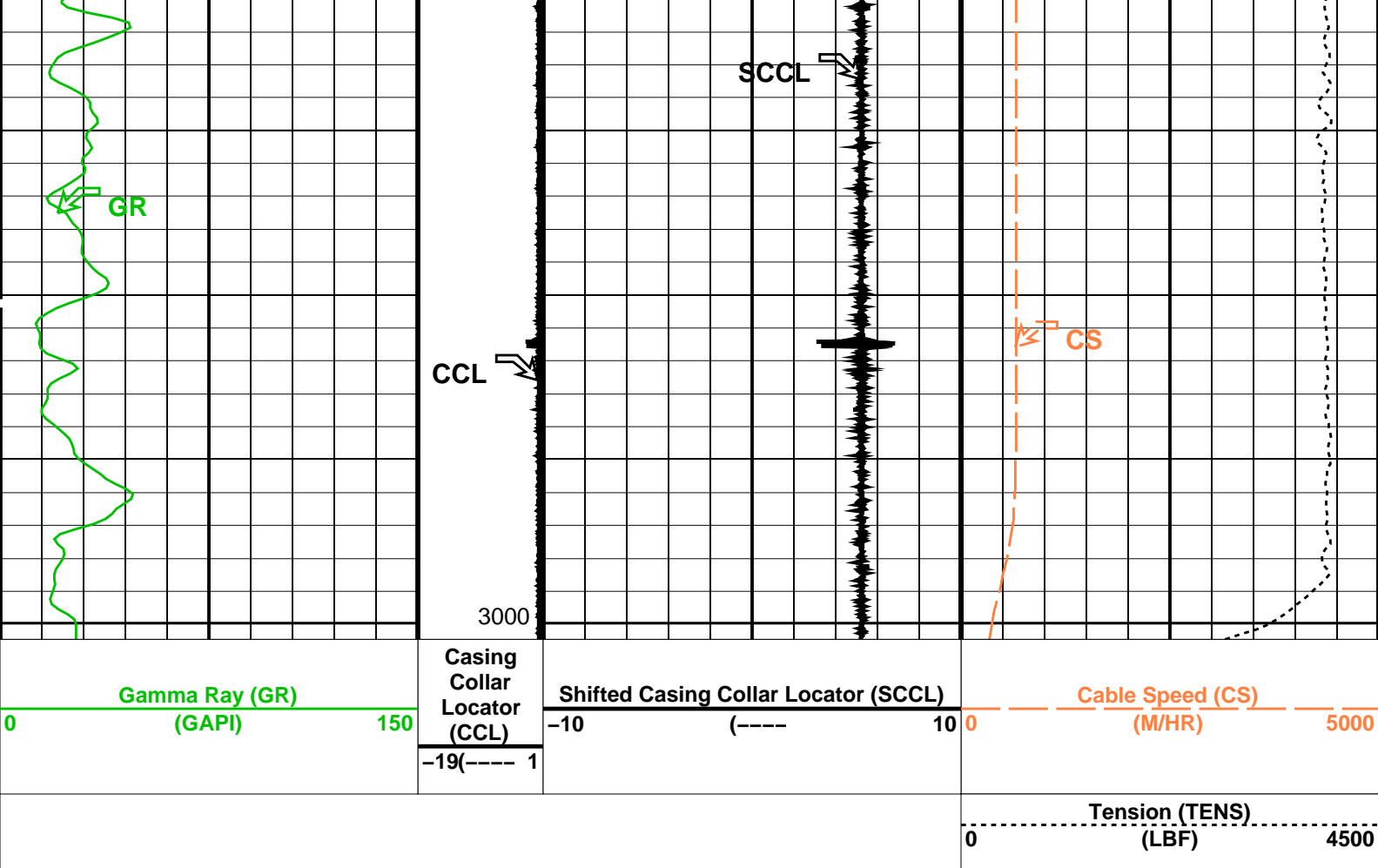
OP System Version: 14C0-302
MCM

PGGT-D 14C0-302 SHM_GUN 14C0-302

PIP SUMMARY

Time Mark Every 60 S





PIP SUMMARY

Time Mark Every 60 S

Parameters

DLIS Name	Description	Value
DO	System and Miscellaneous	0.1 M
PP	Depth Offset for Playback Playback Processing	NORMAL

Format: PERFO Vertical Scale: 1:200

Graphics File Created: 29-Jul-2006 20:07

OP System Version: 14C0-302

MCM

PGGT-D 14C0-302 SHM_GUN 14C0-302

Input DLIS Files

DEFAULT PERFO_033LUP FN:32 PRODUCER 29-Jul-2006 19:58 3000.3 M 2937.1 M

Output DLIS Files

DEFAULT PERFO_034PUP FN:33 PRODUCER 29-Jul-2006 20:07

Schlumberger

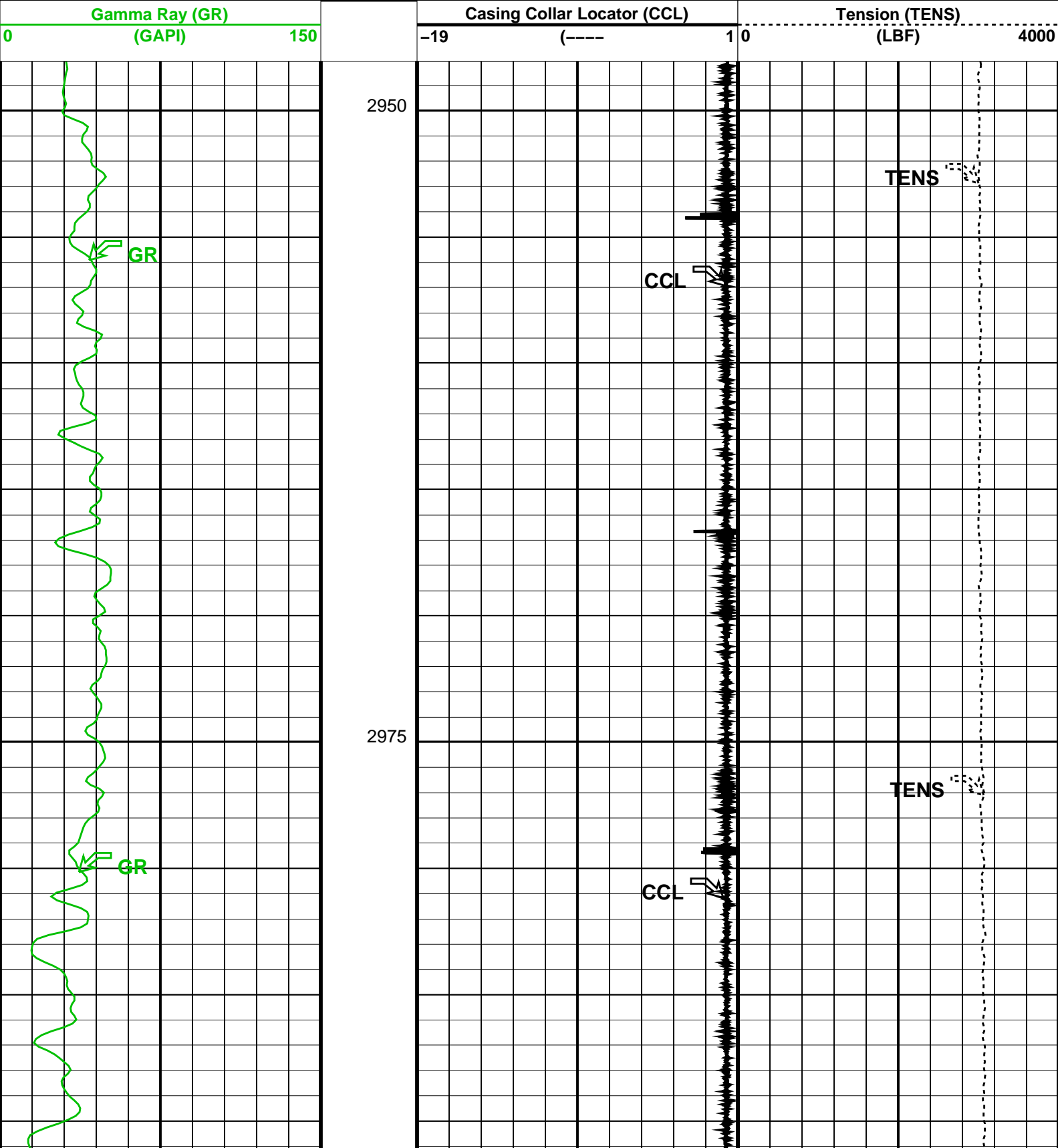
**Junk Basket
Correlation**

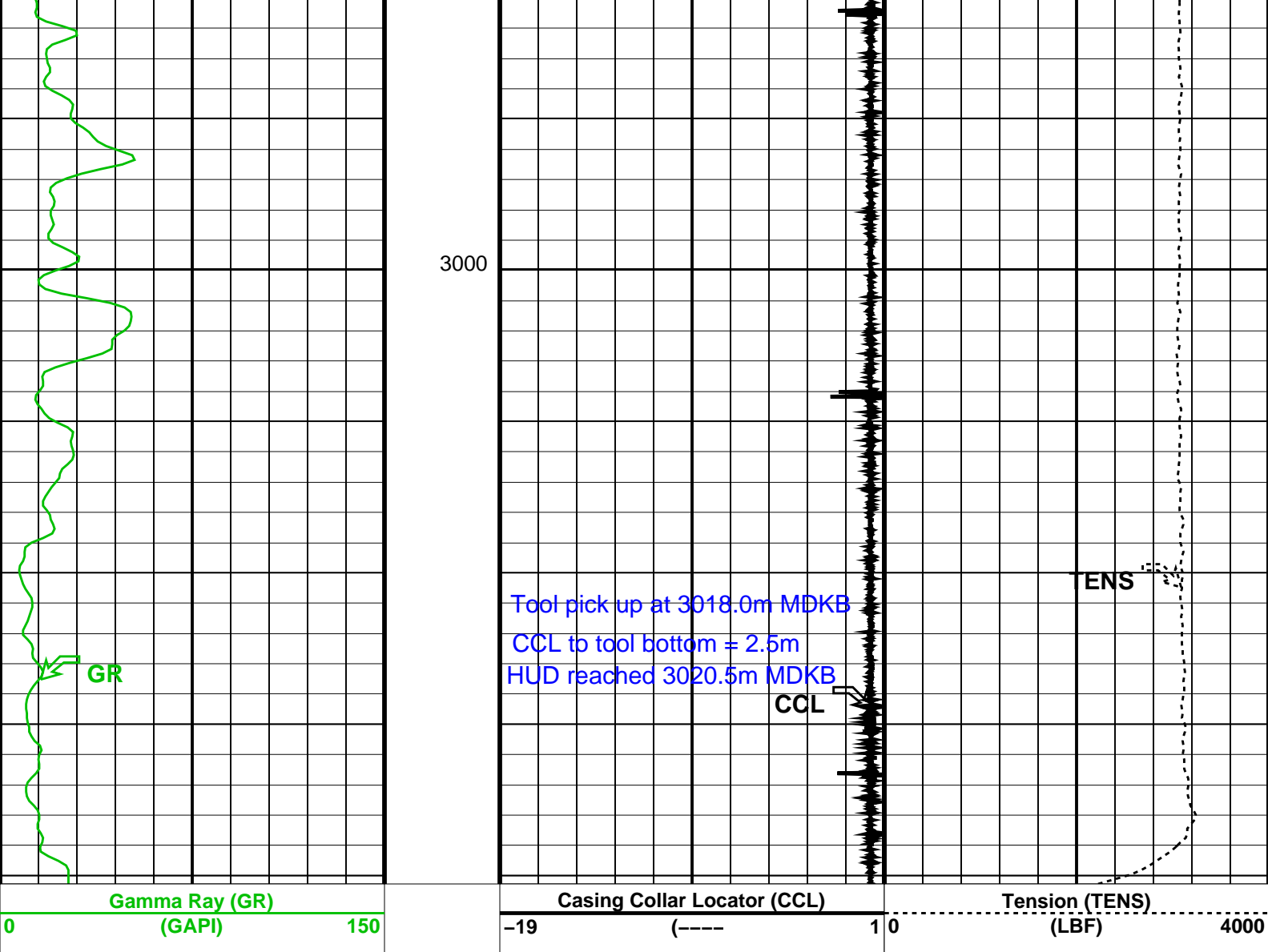
Output DLIS Files

DEFAULT PERFO_015LUP FN:14 PRODUCER 29-Jul-2006 16:09 3020.3 M 2948.0 M

OP System Version: 14C0-302
MCM

PGGT-D 14C0-302 SHM_GUN 14C0-302





Format: CORRELATION Vertical Scale: 1:200 Graphics File Created: 29-Jul-2006 16:09

OP System Version: 14C0-302

MCM

PGGT-D 14C0-302 SHM_GUN 14C0-302

Output DLIS Files

DEFAULT PERFO_015LUP FN:14 PRODUCER 29-Jul-2006 16:09

Company: **Esso Australia Pty Ltd.**

Schlumberger

Well: **WFK W 27a**

Field: **Bass Strait**

Rig: **453 / Prod 3**

Country: **Australia**

Junk basket
PGGT-D GR / CCL
Max-R setting record