

Company: Esso Australia Ltd.

Well: WKF W-31a
Field: West Kingfish
Rig: Prod 3/Rig 453

State: Victoria

Junk Basket
6" Gauge ring
GR-CCL

Rig:Prod 3/Rig 453

Field:West Kingfish

Location:Gipplsand

Well:WKF W-31a

Company:Esso Australia Ltd.

LOCATION

Gipplsand

Basin

Bass Strait

Elev.:K.B.33.4 m

G.L.-76.13 m

D.F.33.4 m

Permanent Datum:Mean Sea Level

Log Measured From:Kelly Bushing

Drilling Measured From:Kelly Bushing

API Serial No.

Section

Township

Range

PVT DATA	Oil Density	Run 1	Run 2	R
	Water Salinity			
	Gas Gravity			
	Bo			
	Bw			
CEMENTING DATA	1/Bg			
	Bubble Point Pressure			
	Bubble Point Temperature			
	Solution GOR			
	Maximum Deviation	59 deg		
Tail Cement Type	Primary/Squeeze	Primary		
	Casing String No			
	Lead Cement Type			
	Volume			
	Density			
Additives	Water Loss			
	Additives			
Expected Cement Top	Tail Cement Type			
	Volume			
	Density			
	Water Loss			
	Additives			
Logging Date	Logging Date			
	Run Number			
	Depth Driller			
	Schlumberger Depth			
	Bottom Log Interval			
Casing Fluid Type	Top Log Interval			
	Casing Fluid Type			
	Salinity			
	Density			
	Fluid Level			
BIT/CASING/TUBING STRING	Bit Size			
	From			
	To			
	Casing/Tubing Size			
	Weight			
Maximum Recorded Temperatures	Grade			
	From			
	To			
	Logger On Bottom			
	Unit Number			
Recorded By	Recorded By			
	Witnessed By			

Date Created: 14-JUN-2006 14:28:42

Logging Cable

Type:	7-46ZV-XS
Serial Number:	76075
Length:	7310.93 M
Conveyance Method:	Wireline
Rig Type:	Offshore Fixed

Log Sequence:	Subsequent Trip To the Well
Reference Log Name:	Precision dual laterolog-GR-Density-Neutron
Reference Log Run Number:	1
Reference Log Date:	06-May-2006
Subsequent Trip Down Log Correction:	2.00 M

DISCLAIMER

THE USE OF AND RELIANCE UPON THIS RECORDED-DATA BY THE HEREIN NAMED COMPANY (AND ANY OF ITS AFFILIATES, PARTNERS, REPRESENTATIVES, AGENTS, CONSULTANTS AND EMPLOYEES) IS SUBJECT TO THE TERMS AND CONDITIONS AGREED UPON BETWEEN SCHLUMBERGER AND THE COMPANY, INCLUDING: (a) RESTRICTIONS ON USE OF THE RECORDED-DATA; (b) DISCLAIMERS AND WAIVERS OF WARRANTIES AND REPRESENTATIONS REGARDING COMPANY'S USE OF AND RELIANCE UPON THE RECORDED-DATA; AND (c) CUSTOMER'S FULL AND SOLE RESPONSIBILITY FOR ANY INFERENCE DRAWN OR DECISION MADE IN CONNECTION WITH THE USE OF THIS RECORDED-DATA.

OTHER SERVICES2
OS1:
OS2:
OS3:
OS4:
OS5:

REMARKS: RUN NUMBER 2

Density neutron Dated 6-may-2006

Purpose of log- RIH with 6" Gauge ring Junk Basket, GR-CCL to reach HUD 3390m MDKB for MAXR setting.
RIH to 3369.5mMDKB and tool got held up, made several attempts

LOGGED INTERVAL	START	STOP

___ TOOL ZERO

SHM_GUN
GUN-Junk Basket

2.03

AH-6" Gauge ring

TOOL BOTTOM

0.03

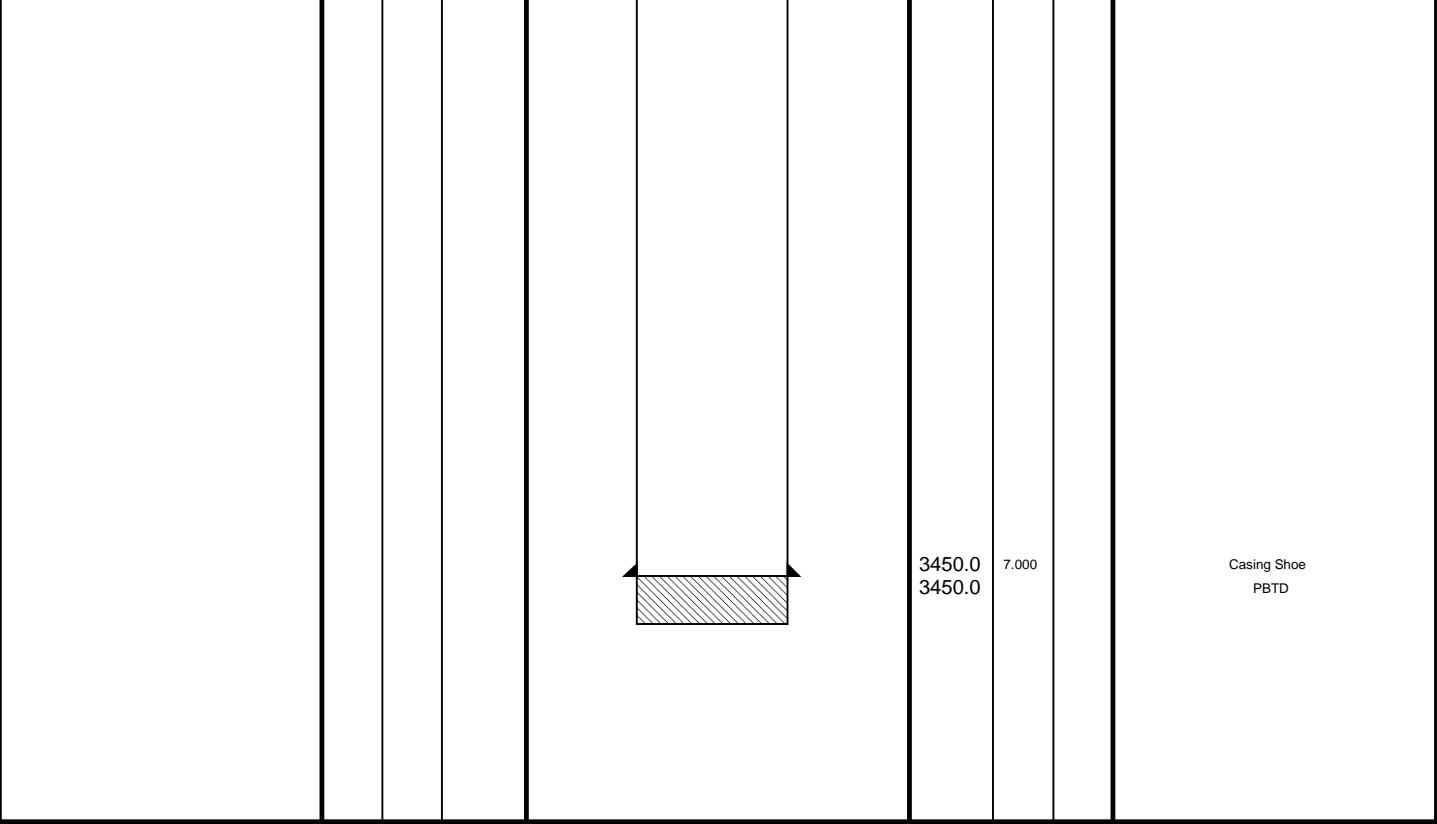
MAXIMUM STRING DIAMETER 6.00 IN
MEASUREMENTS RELATIVE TO TOOL ZERO
ALL LENGTHS IN METERS

Client: Esso Australia Ltd.
Well: WKF W-31a
Field: West Kingfish
State: Victoria
Country: Australia

Drawing Date: 7/12/2006
API #:

Rig Name: West Kingfish
Reference Datum: Kelly Bushing
Elevation: 33.4 m

Production String	(in)		(m)	Well Schematic				(m)	(in)		Casing String	
	OD	ID	MD					MD	OD	ID		
								13.0	13.005		Casing String	
								1300.0	13.375		Casing Shoe	



Job Events Summary

MAXIS Field Log

Schlumberger Job Event Summary

	Time	Elapsed Time	Depth (M)	File
Rig Up Started	10-Jul-2006 21:30			
Log Pass (up)	10-Jul-2006 23:26	000:12	3418.0 – 3298.1	PERFO_006LUP
Log Pass (up)	11-Jul-2006 2:19	000:19	3374.6 – 3181.7	PERFO_014LUP
Log Pass (up)	11-Jul-2006 2:58	000:05	3401.0 – 3352.0	PERFO_019LUP
Rig Down Completed	11-Jul-2006 5:00			

Input DLIS Files

DEFAULT PERFO_006LUP FN:3 PRODUCER 12-Jul-2006 15:32 3418.0 M 3298.1 M

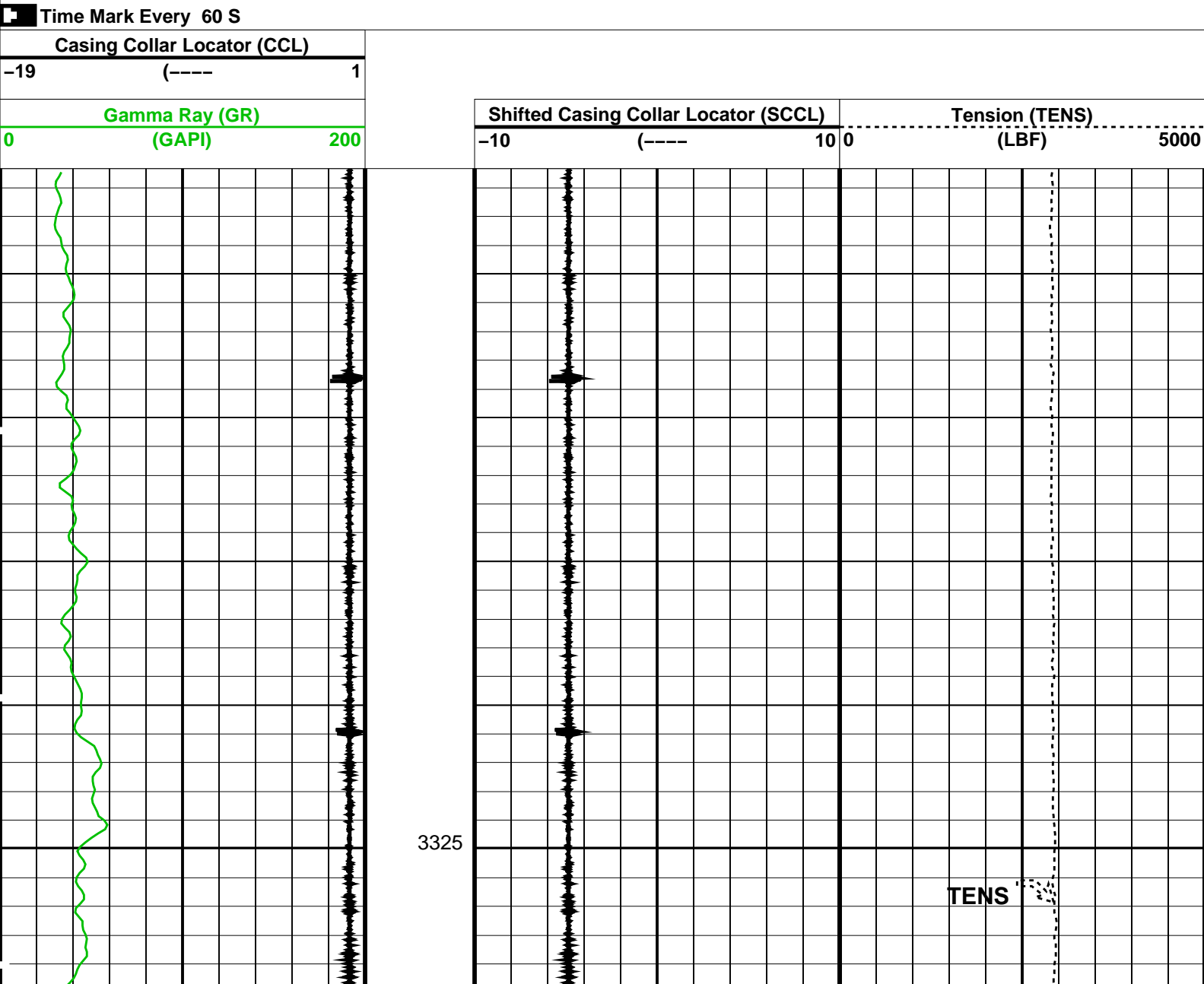
Output DLIS Files

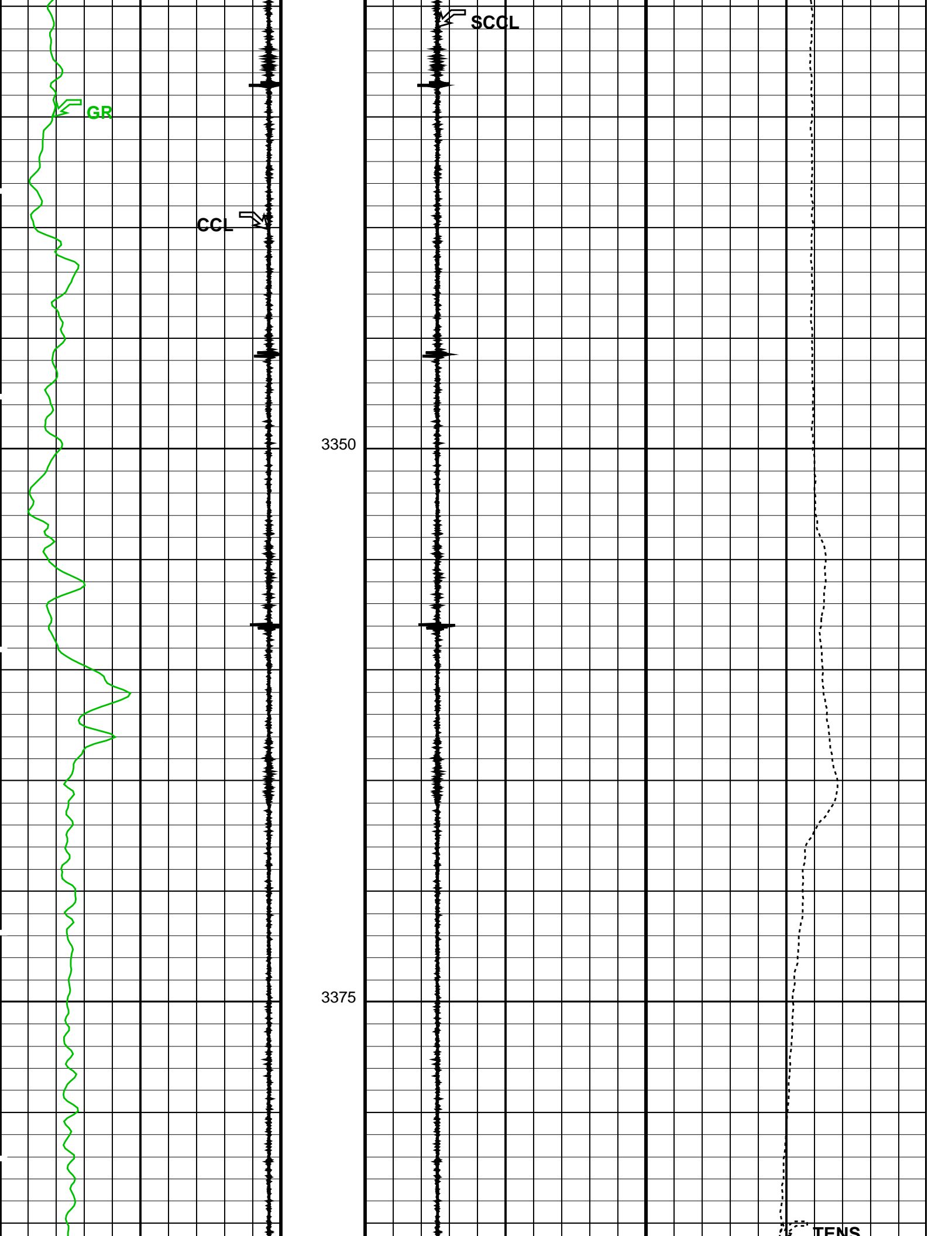
DEFAULT PERFO_028PUP FN:4 PRODUCER 12-Jul-2006 16:32 3420.8 M 3301.3 M

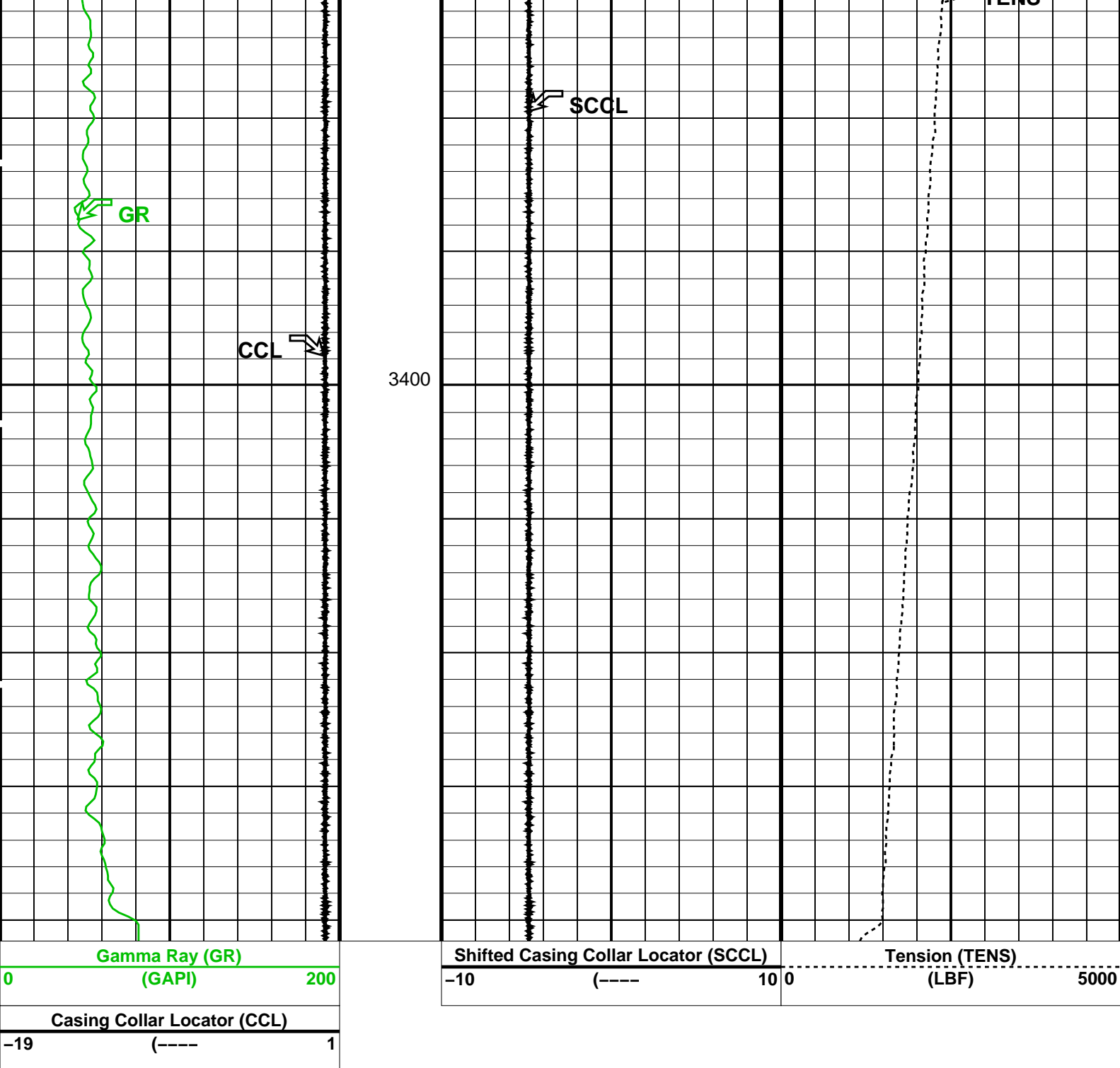
OP System Version: 14C0-302
MCM

SHM_GUN 14C0-302 PGGT-D 14C0-302

PIP SUMMARY







PIP SUMMARY

Time Mark Every 60 S

Parameters

DLIS Name	Description	Value
DO	System and Miscellaneous	
PP	Depth Offset for Playback	2.7 M
	Playback Processing	NORMAL

Format: PERFO Vertical Scale: 1:200 Graphics File Created: 12-Jul-2006 16:32

OP System Version: 14C0-302
MCM

SHM_GUN 14C0-302 PGGT-D 14C0-302

Input DLIS Files

DEFAULT PERFO_006LUP EN-3 PRODUCER 12-Jul-2006 15:32 3418.0 M 3298.1 M



Junk Basket Run 1

6" Gauge Ring

MAXIS Field Log

Input DLIS Files

DEFAULT	PERFO_015PUP	FN:12	PRODUCER	11-Jul-2006 02:42	3377.0 M	3184.6 M
---------	--------------	-------	----------	-------------------	----------	----------

Output DLIS Files

DEFAULT	PERFO_016PUP	FN:13	PRODUCER	11-Jul-2006 02:44	3377.8 M	3185.8 M
---------	--------------	-------	----------	-------------------	----------	----------

OP System Version: 14C0-302
MCM

SHM_GUN	14C0-302	PGGT-D	14C0-302
---------	----------	--------	----------

PIP SUMMARY

Time Mark Every 60 S

Casing Collar Locator (CCL)

-19 (----- 1

Gamma Ray (GR)

(GAPI)	200
--------	-----

Shifted Casing Collar Locator (SCCL)

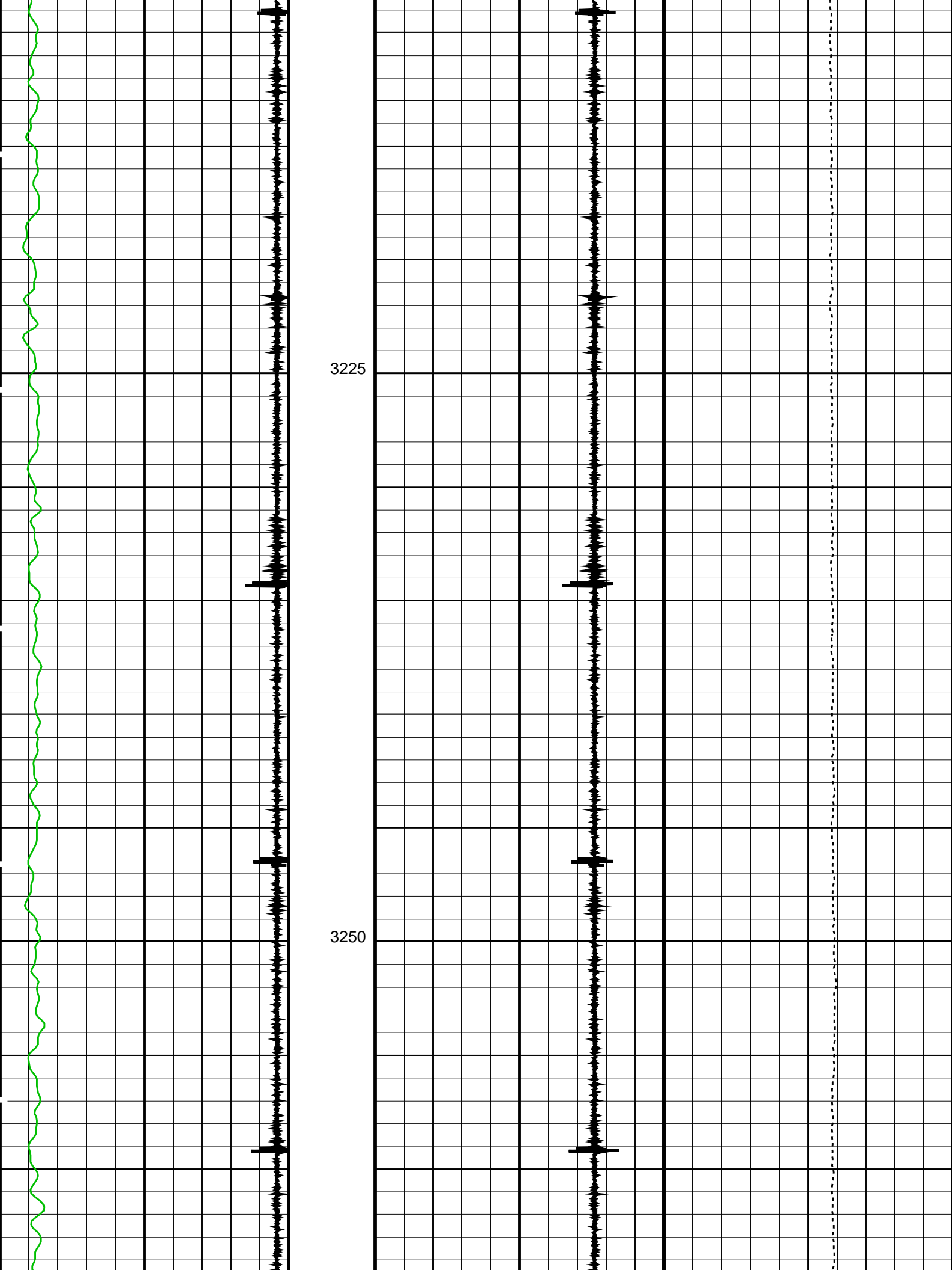
-10 (----- 10

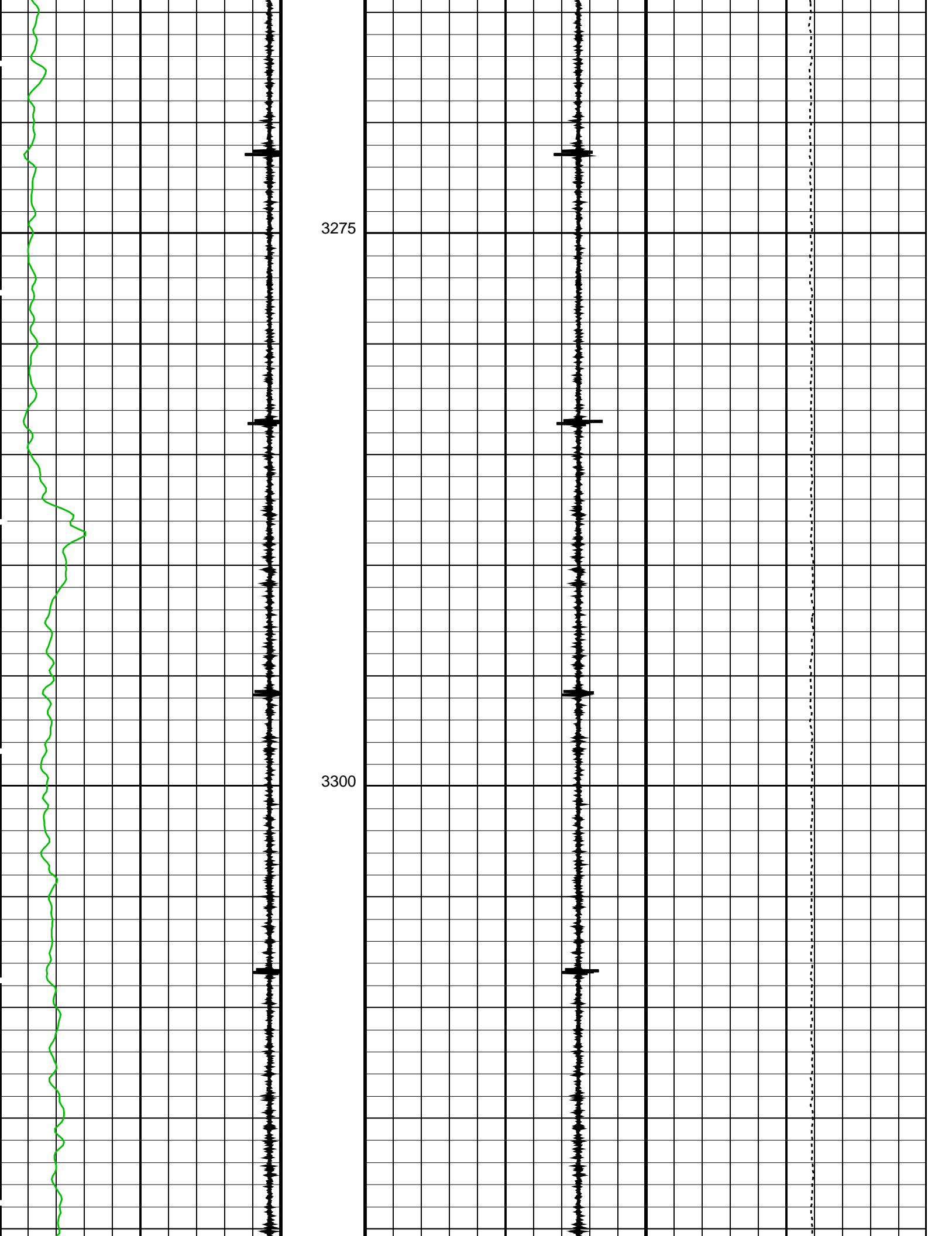
Tension (TENS)

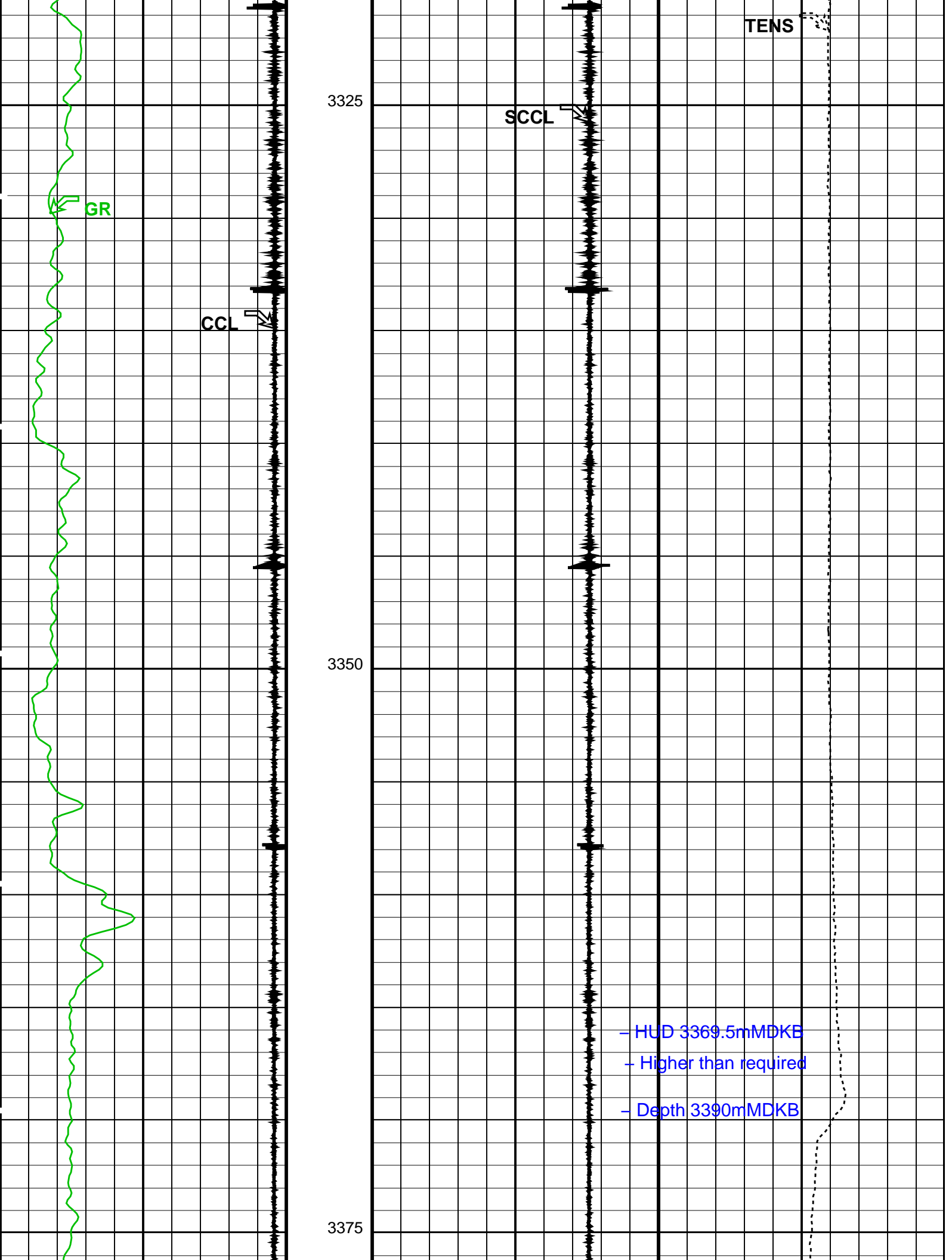
(LBF) 5000

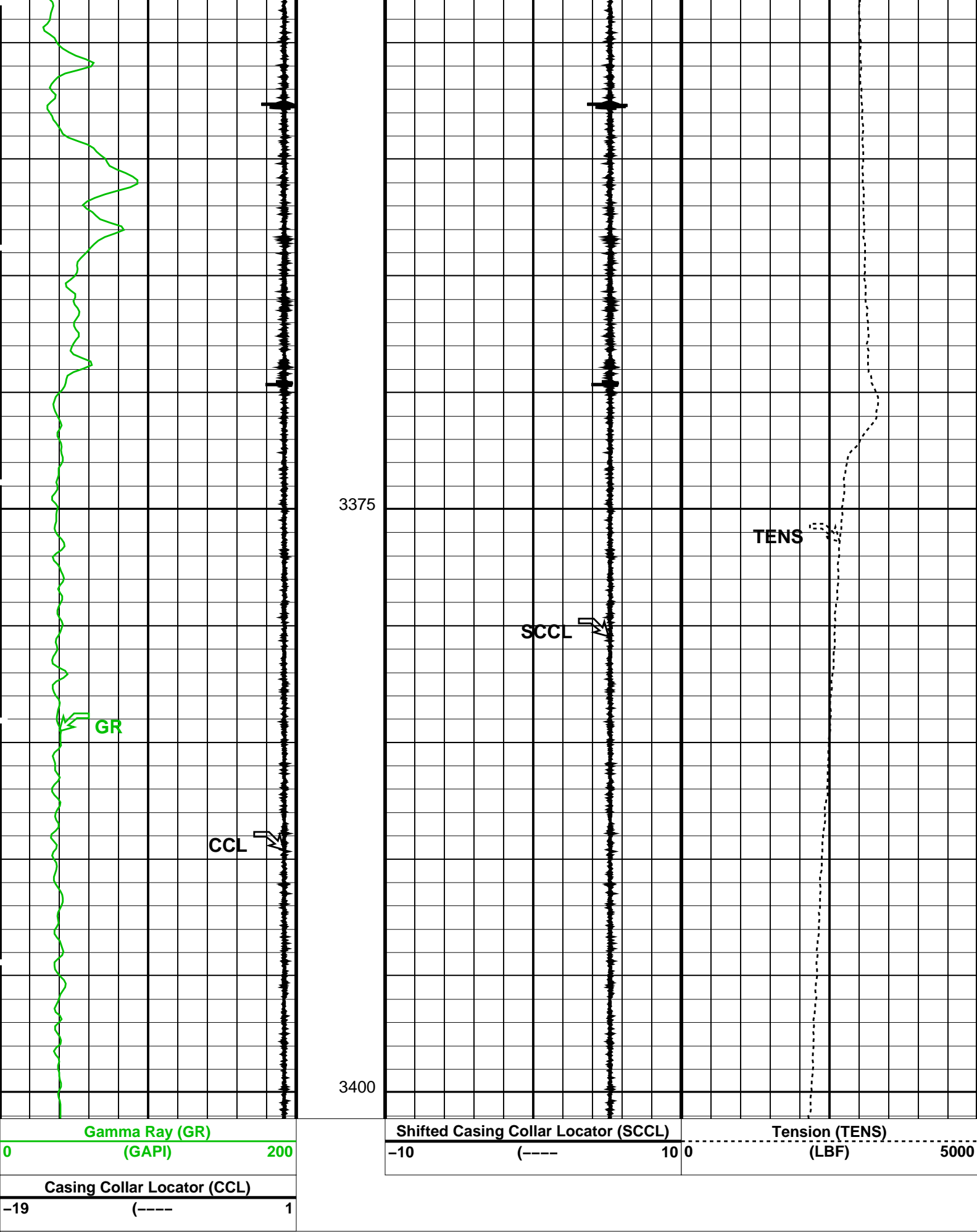
- Pip Tag

3200









PIP SUMMARY

Parameters

DLIS Name		Description		Parameters		Value	
DO PP	System and Miscellaneous			Depth Offset for Playback		0.2	M
				Playback Processing		NORMAL	
	Format: PERFO			Vertical Scale: 1:200		Graphics File Created: 12-Jul-2006 16:33	
OP System Version: 14C0-302							
MCM							
SHM_GUN	14C0-302		PGGT-D		14C0-302		
Input DLIS Files							
DEFAULT	PERFO_019LUP		FN:16	PRODUCER	12-Jul-2006 15:33	3401.0 M	3352.0 M
Output DLIS Files							
DEFAULT	PERFO_029PUP		FN:5	PRODUCER	12-Jul-2006 16:33		
Company: Esso Australia Ltd.							
Schlumberger							
Well:	WKF W-31a						
Field:	West Kingfish						
Rig:	Prod 3/Rig 453						
State:	Victoria						
Junk Basket							
6" Gauge ring							
GR-CCL							