

Company: Esso Australia PTY.LTD

Well: WKF W18a

Field: Bass Strait

Rig: 453 / Prod 3

Country: Australia

Junk Basket / 6" Gauge Ring
MAXR with 4.5" HSD

453 / Prod 3
Bass Strait
Gippsland Basin
WKF W18a
Esso Australia PTY.LTD

453 / Prod 3		Gippsland Basin West KingFish		Elev.: K.B. 33.43 m G.L. -76.13 m D.F. 33.43 m	
Rig:	Bass Strait				
Field:	Gippsland Basin				
Location:	WKF W18a				
Well:	Esso Australia PT				
Company:					
LOCATION					
Permanent Datum:		Mean Sea Level		Elev.: 0 m	
Log Measured From:		Kelly Bushing		33.4 m above Perm. Datum	
Drilling Measured From:		Kelly Bushing			
State: Victoria	Max. Well Deviation 33.3 deg	Longitude 148° 06' 15.1" E		Latitude 38° 35' 40.7" S	
Logging Date	7-May-2006				
Run Number	1				
Depth Driller	2710 m				
Schlumberger Depth	2668.5 m				
Bottom Log Interval	2637.17 m				
Top Log Interval	2637.17 m				
Casing Fluid Type	Brine				
Salinity					
Density					
Fluid Level					
BIT/CASING/TUBING STRING					
Bit Size	8.510 in				
From	650 m				
To	2710 m				
Casing/Tubing Size	7.000 in				
Weight	26 lbm/ft				
Grade	L80				
From	650 m				
To	2702.9 m				
Maximum Recorded Temperatures	200 degF				
Logger On Bottom	7-May-2006		7:15		
Unit Number	41	AUSL			
Recorded By	Owen Darby				
Witnessed By	Tony Bassett and Bim Steel				

PVT DATA						Run 1	Run 2
Oil Density							
Water Salinity							
Gas Gravity							
Bo							
Bw							
1/Bg							
Bubble Point Pressure							
Bubble Point Temperature							
Solution GOR							
Maximum Deviation	33.3 deg						
CEMENTING DATA							
Primary/Squeeze	Primary						
Casing String No							
Lead Cement Type							
Volume							
Density							
Water Loss							
Additives							
Tail Cement Type							
Volume							
Density							
Water Loss							
Additives							
Expected Cement Top							
Logging Date							
Run Number							
Depth Driller							
Schlumberger Depth							
Bottom Log Interval							
Top Log Interval							
Casing Fluid Type							
Salinity							
Density							
Fluid Level							
BIT/CASING/TUBING STRING							
Bit Size							
From							
To							
Casing/Tubing Size							
Weight							
Grade							
From							
To							
Maximum Recorded Temperatures							
Logger On Bottom							
Unit Number							
Recorded By							
Witnessed By							

Date Created: 7-MAY-2006 13:04:06

Logging Cable

Type:	7-46P
Serial Number:	73229
Length:	5999.99 M
Conveyance Method:	Wireline
Rig Type:	Offshore Fixed

Log Sequence:	Subsequent Trip To the Well
Reference Log Name:	Dual Laterlog –GR Density – Neutron
Reference Log Run Number:	1
Reference Log Date:	30–Apr–2006
Subsequent Trip Down Log Correction:	0.88 M

1. Correlated to precision log provided by client
2. Used IDW as primary depth control
3. Used Z-Chart as secondary depth control
- 4.
- 5.
- 6.

THE USE OF AND RELIANCE UPON THIS RECORDED-DATA BY THE HEREIN NAMED COMPANY (AND ANY OF ITS AFFILIATES, PARTNERS, REPRESENTATIVES, AGENTS, CONSULTANTS AND EMPLOYEES) IS SUBJECT TO THE TERMS AND CONDITIONS AGREED UPON BETWEEN SCHLUMBERGER AND THE COMPANY, INCLUDING: (a) RESTRICTIONS ON USE OF THE RECORDED-DATA; (b) DISCLAIMERS AND WAIVERS OF WARRANTIES AND REPRESENTATIONS REGARDING COMPANY'S USE OF AND RELIANCE UPON THE RECORDED-DATA; AND (c) CUSTOMER'S FULL AND SOLE RESPONSIBILITY FOR ANY INFERENCE DRAWN OR DECISION MADE IN CONNECTION WITH THE USE OF THIS RECORDED-DATA.

OTHER SERVICES2
OS1:
OS2:
OS3:
OS4:
OS5:









REMARKS: RUN NUMBER 2

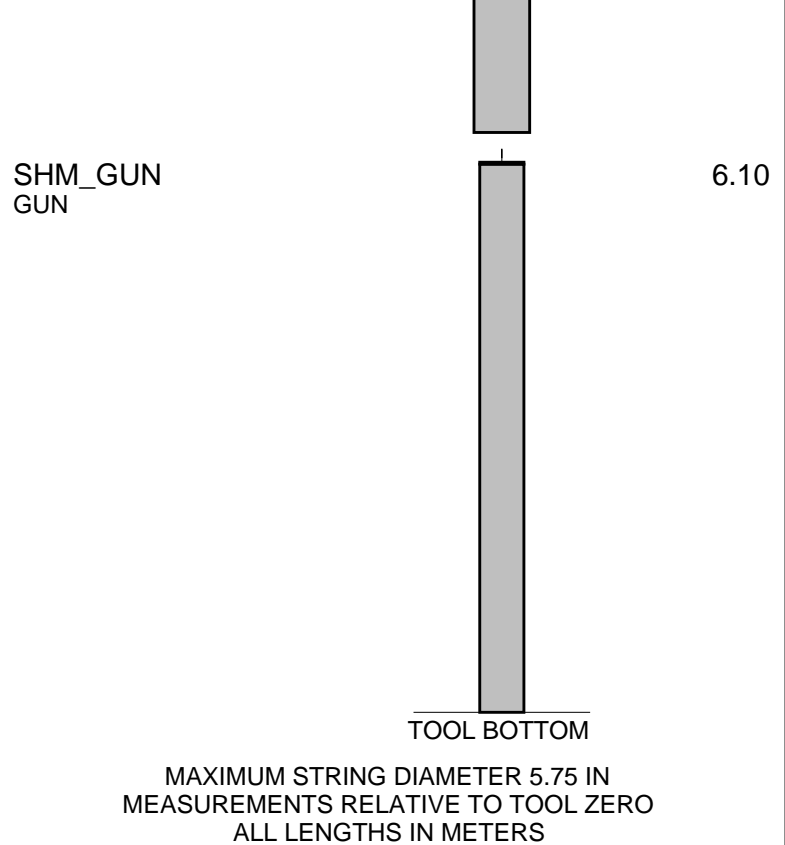
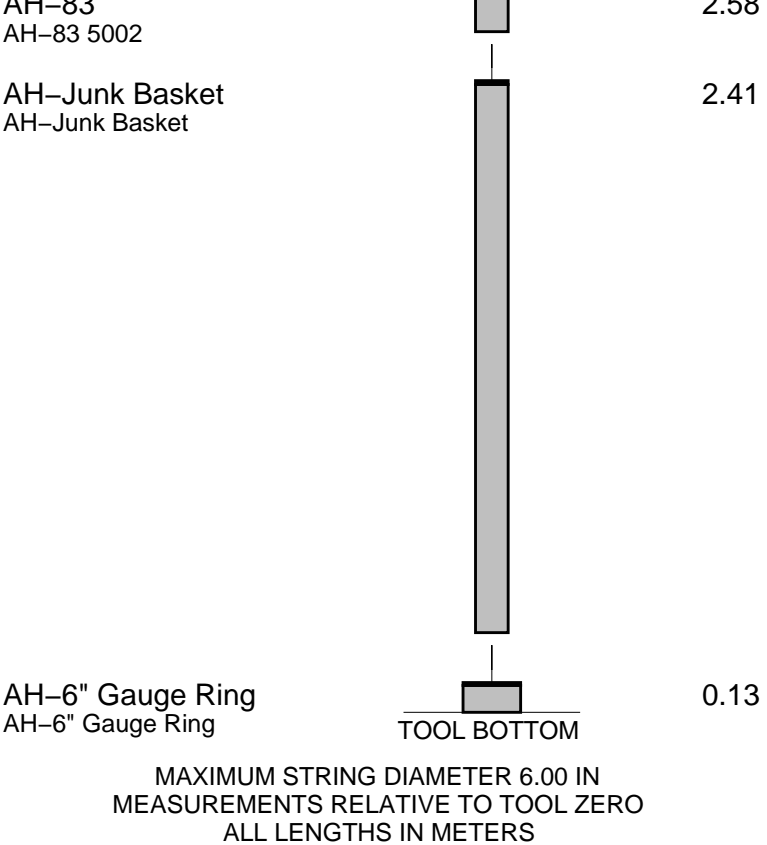
Dated = 30-Apr-2006

HUD tagged at = 2668.5 m MDKB

CCI to JB bottom = 2.5 m

CCL to JD bottom = 2.5 m					
RIH with MAXR gun system and set top shot at = 2649m MDKB					
CCL to top shot = 11.83 m					
CCL stop depth = 2637.17m MDKB					
CCL to gun bottom = 15.3m					
Perforation Interval = 2649.0m MDKB to 2651.0m MDKB					
Specialist = Owen Darby					
Operators = Tony Goodwin & Ben taylor (Days)					
Darren Watts & Luke Dooley (Nights)					
RUN 1			RUN 2		
SERVICE ORDER #: PROGRAM VERSION: FLUID LEVEL:			SERVICE ORDER #: PROGRAM VERSION: FLUID LEVEL:		
AUSL06184886 14C0-302					
LOGGED INTERVAL	START	STOP	LOGGED INTERVAL	START	STOP

EQUIPMENT DESCRIPTION					
RUN 1			RUN 2		
			SURFACE EQUIPMENT		
			WITM (SHM)		
			DOWNHOLE EQUIPMENT		
PEH-A PEH-A 30		5.31	PEH-A		17.74
			PEH-A 30		
			AH-64		17.20
			AH-64 2926		
			PGGT-D		
AH-64 AH-64 2926		4.77	PGGC 227		
			PGGH-D 227		
			Gamma Ray		16.79
			CCL Casin Tension		TOOL ZERO
PGGT-D PGGC 227 PGGH-D 227		4.36	AH-83		15.01
			AH-CPST		
			AH-CPST		14.84
AH-MAX-R AH-MAX-R		2.59			12.86

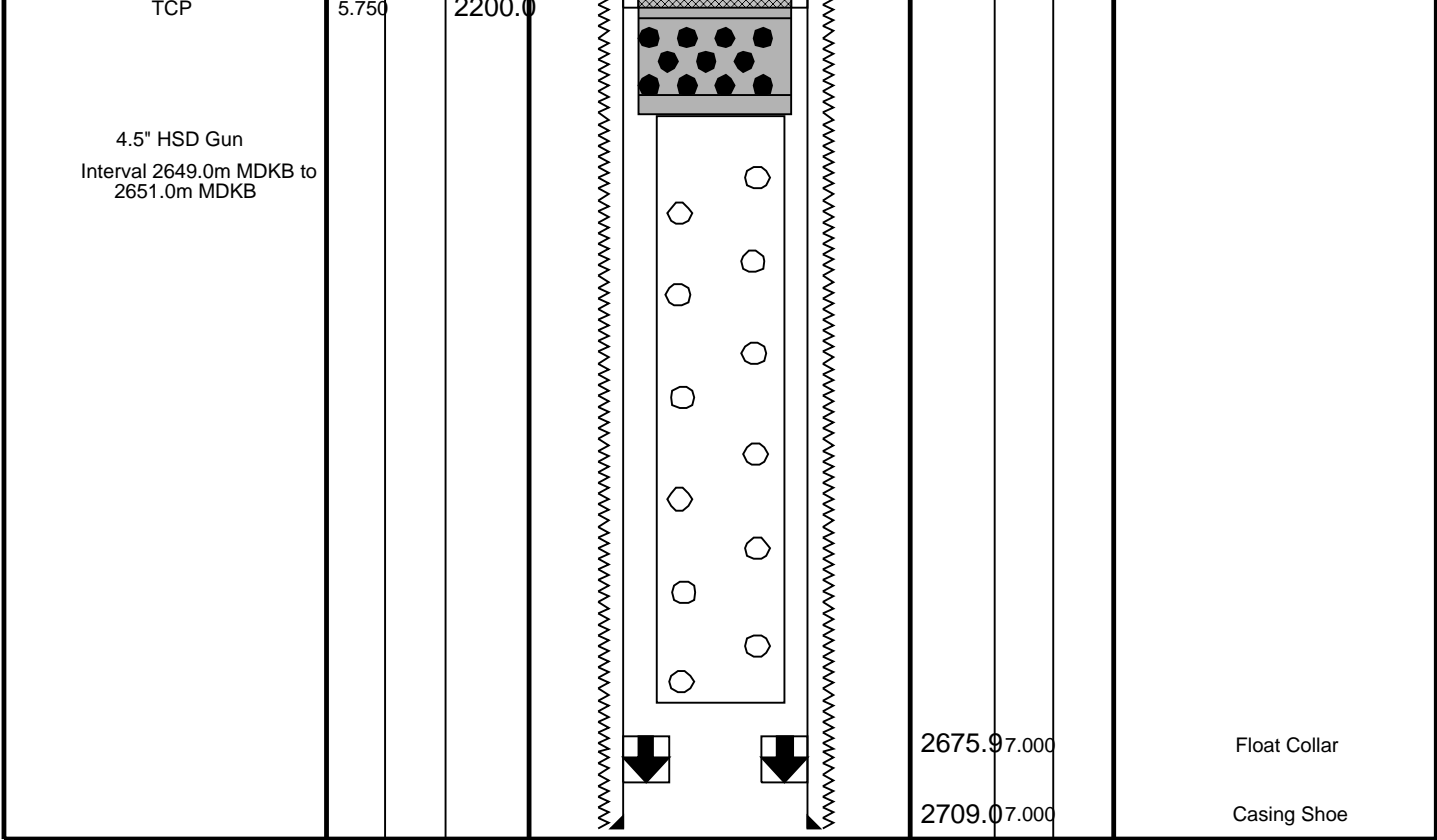


Client: ExxonMobil
 Well: WKF W18a
 Field: Bass Strait
 State: Victoria

5/6/2006

Rig Name: West KingFish
 Elevation: 33.4 m

Production String	(in)		(m)	Well Schematic	(m)		(in)	Casing String
	OD	ID	MD		MD	OD	ID	
					12.0	8.510		Borehole Segment Liner Hanger
						7.00		Casing String, 38.8 kg/m, L 80
						10.875		Surface Casing String
					651.0	10.875		Surface Casing Shoe
MAX-R Gun system	7.000	5.750	1290.0					



Schlumberger

Operational Summary Listing

MAXIS Field Log

PERFO2 Operational Summary Listing

Device	Status	Req Depth (M)	Obs Depth (M)	Time Used
GUN1	Used	2649.0	2649.0	Sun May 06 12:10:05 2006

Schlumberger

Job Events Summary

Schlumberger Job Event Summary

Time	Elapsed Time	Depth (M)	File
Rig Up Started	7-May-2006 5:45		
Log Pass (up)	7-May-2006 6:51	000:13	2674.5 – 2565.7 PERFO_015LUP
JB logging pass			
Log Pass (up)	7-May-2006 12:10	000:06	2652.8 – 2594.8 PERFO_035LUP
MAXR Correlation Pass			
Log Pass (up)	7-May-2006 12:20	000:14	2650.1 – 2569.5 PERFO_036LUP
MAXR Setting Pass			
Rig Down Completed	7-May-2006 15:00		

Schlumberger

MAXR 4.5" HSD Gun
Setting Pass

Company: ExxonMobil Well: WKF W18a

Output DLIS Files

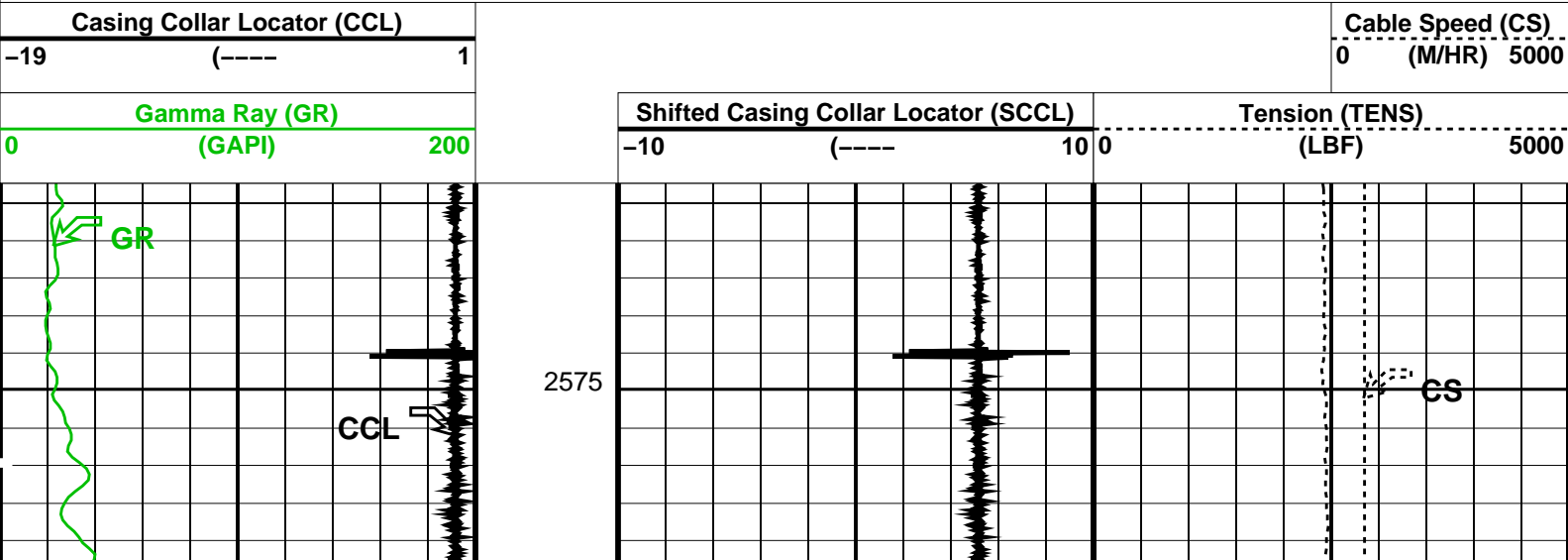
DEFAULT PERFO_036LUP FN:35 PRODUCER 07-May-2006 12:20

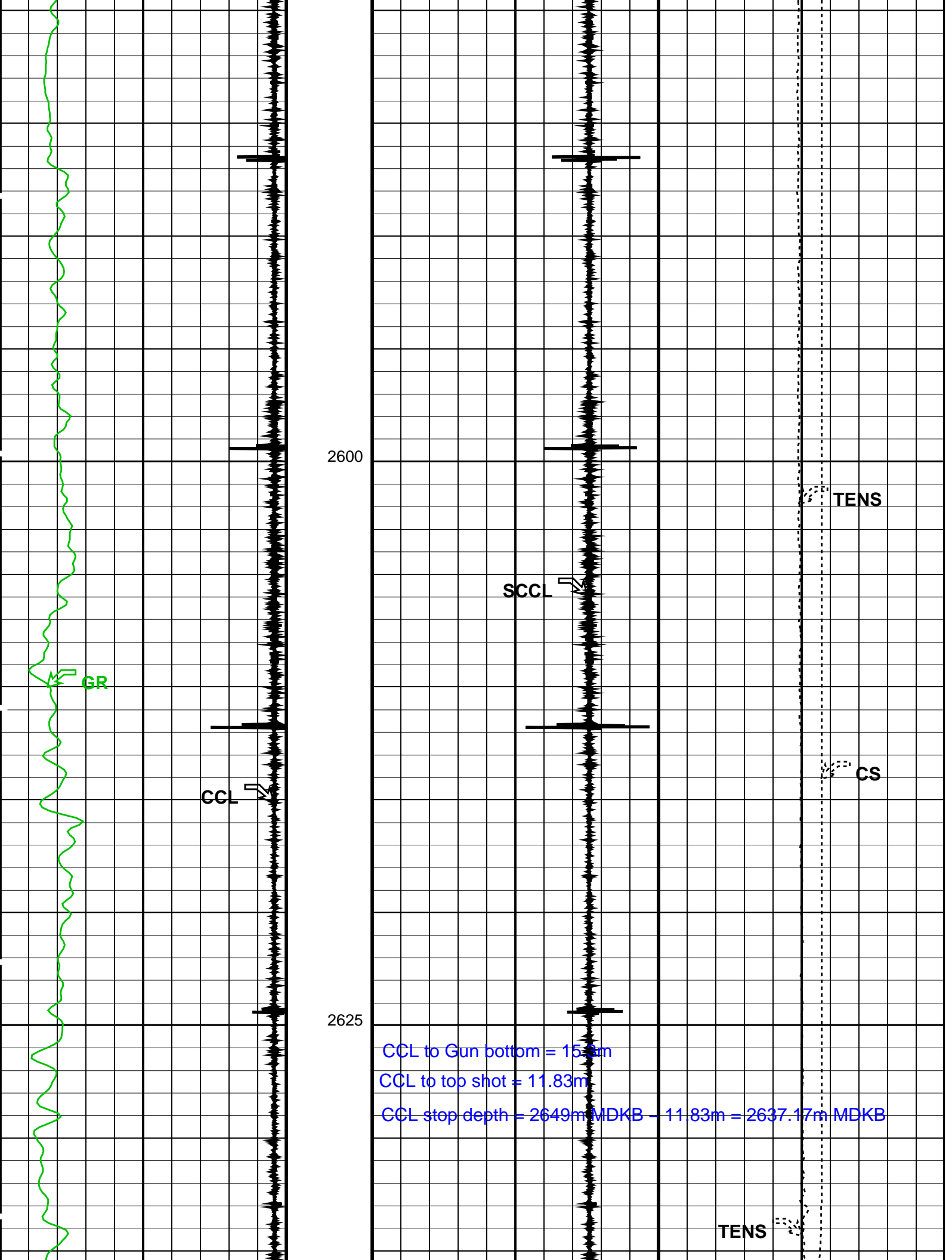
OP System Version: 14C0-302
MCM

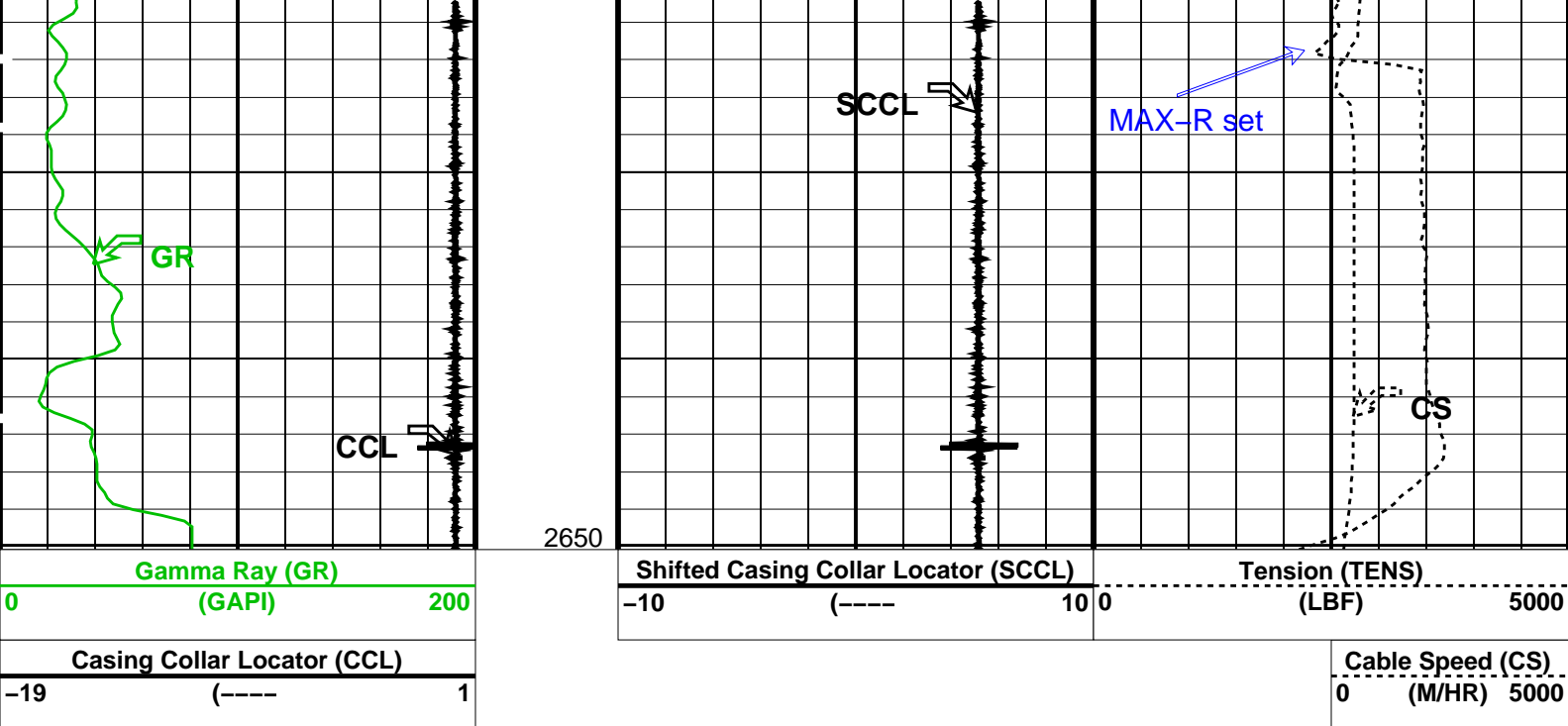
SHM_GUN 14C0-302 PGGT-D 14C0-302

PIP SUMMARY

Time Mark Every 60 S







PIP SUMMARY

Time Mark Every 60 S

Format: PERFO Vertical Scale: 1:200

Graphics File Created: 07-May-2006 12:20

OP System Version: 14C0-302

MCM

SHM_GUN

14C0-302

PGGT-D

14C0-302

Output DLIS Files

DEFAULT

PERFO_036LUP

FN:35

PRODUCER

07-May-2006 12:20

Schlumberger

MAXR 4.5" HSD Gun
Correlation Pass

MAXIS Field Log

Company: ExxonMobil

Well: WKF W18a

Output DLIS Files

DEFAULT

PERFO_035LUP

FN:34

PRODUCER

07-May-2006 12:10

2652.8 M

2594.8 M

OP System Version: 14C0-302

MCM

SHM_GUN

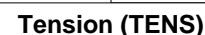
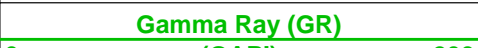
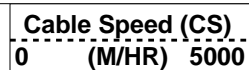
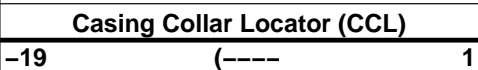
14C0-302

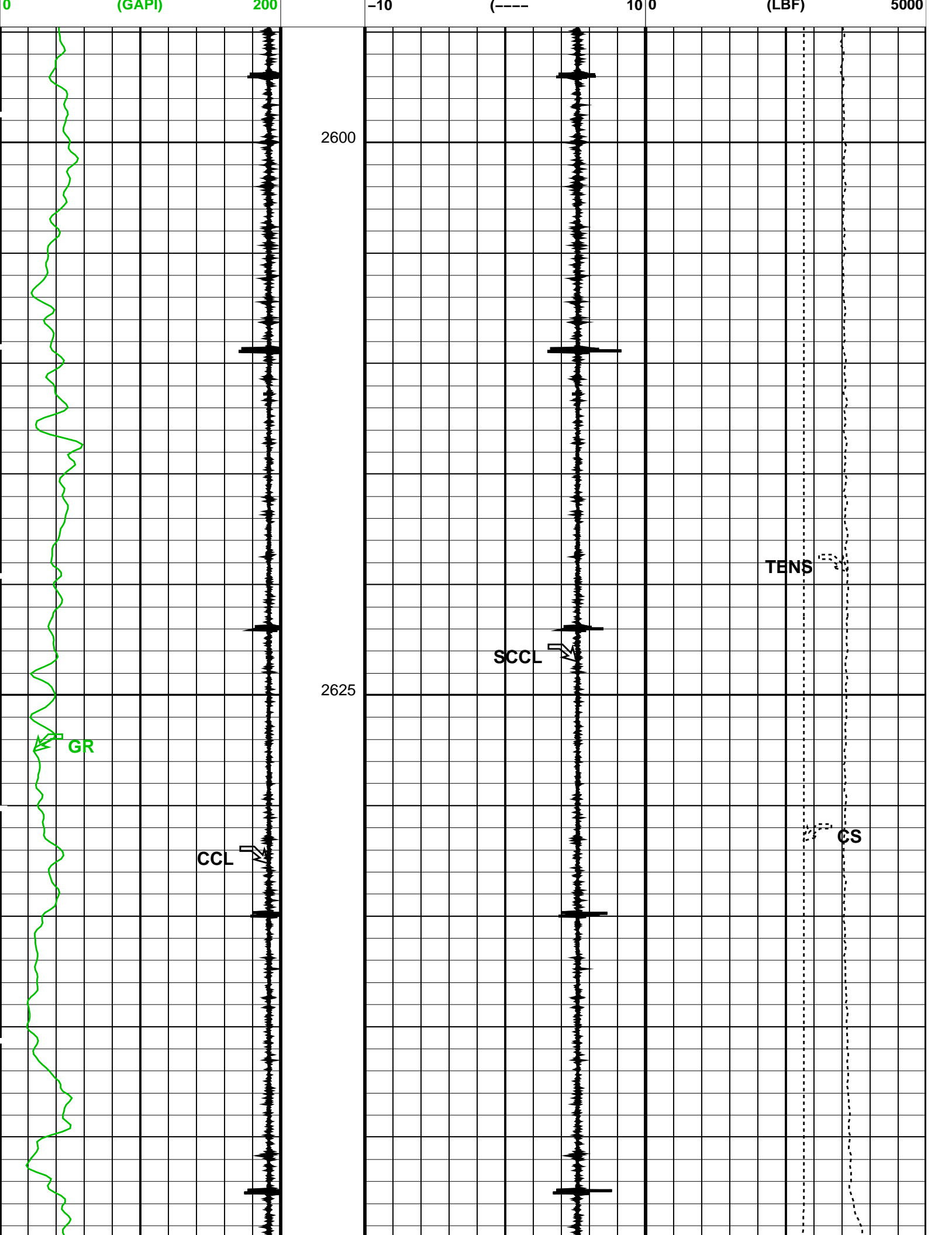
PGGT-D

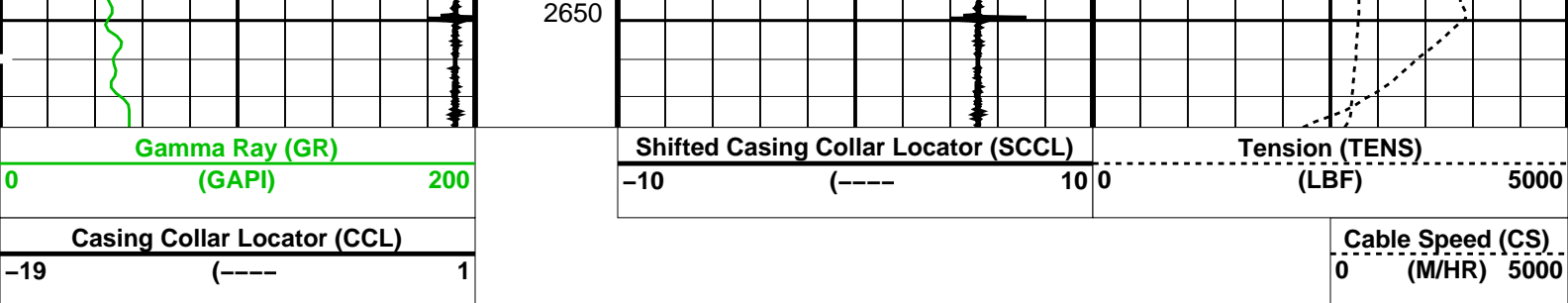
14C0-302

PIP SUMMARY

Time Mark Every 60 S







PIP SUMMARY

Time Mark Every 60 S

Format: PERFO Vertical Scale: 1:200

Graphics File Created: 07-May-2006 12:10

OP System Version: 14C0-302
MCM

SHM_GUN 14C0-302 PGGT-D 14C0-302

Output DLIS Files

DEFAULT PERFO_035LUP FN:34 PRODUCER 07-May-2006 12:10

Schlumberger

6" Gauge Ring Junk Basket
Correlation Pass

MAXIS Field Log

Company: ExxonMobil

Well: WKF W18a

Output DLIS Files

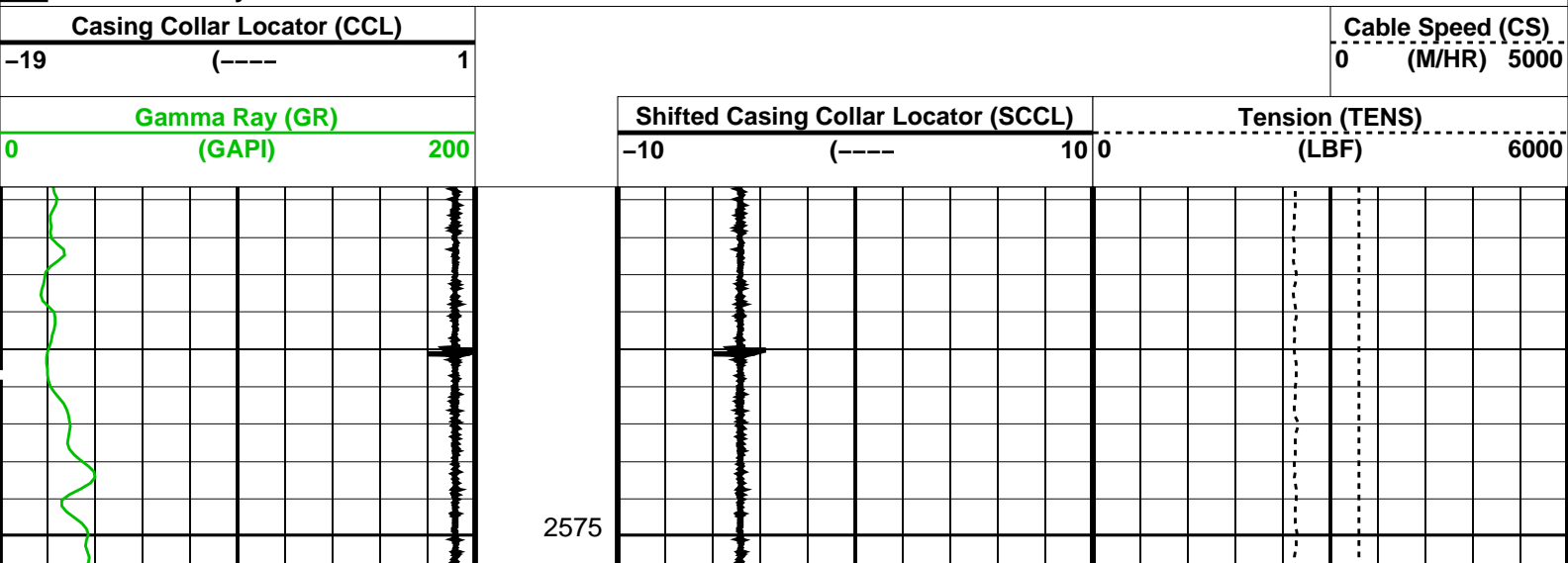
DEFAULT PERFO_015LUP FN:14 PRODUCER 07-May-2006 06:51

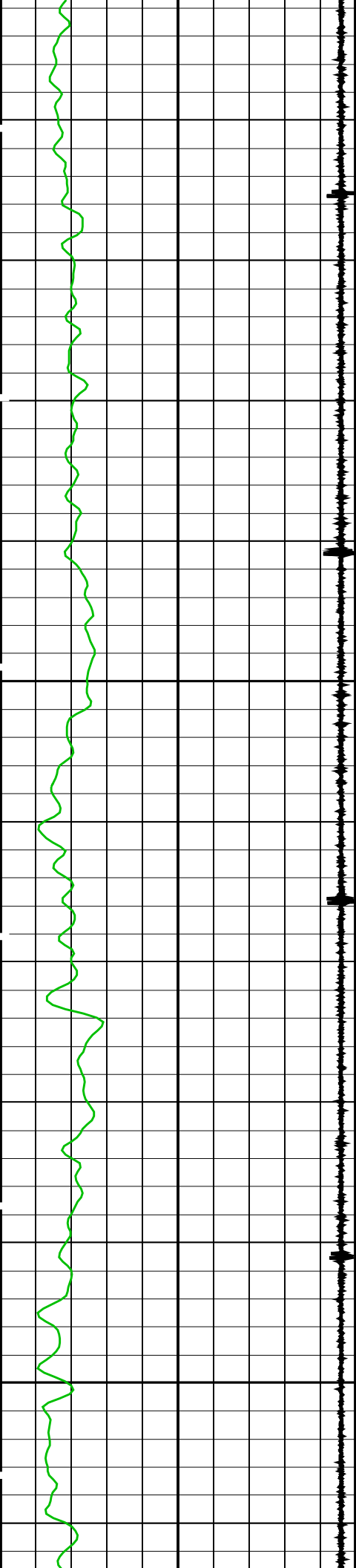
OP System Version: 14C0-302
MCM

SHM_GUN 14C0-302 PGGT-D 14C0-302

PIP SUMMARY

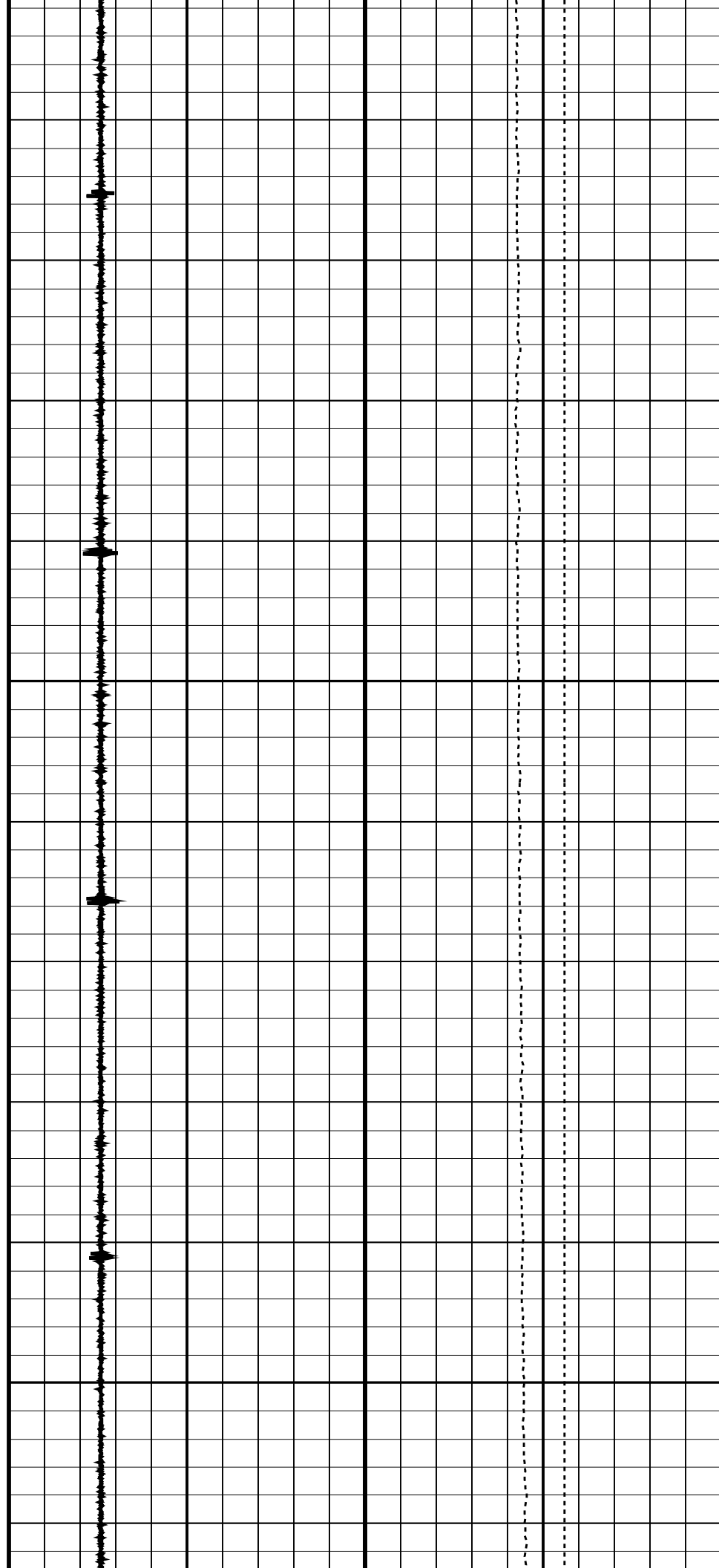
Time Mark Every 60 S

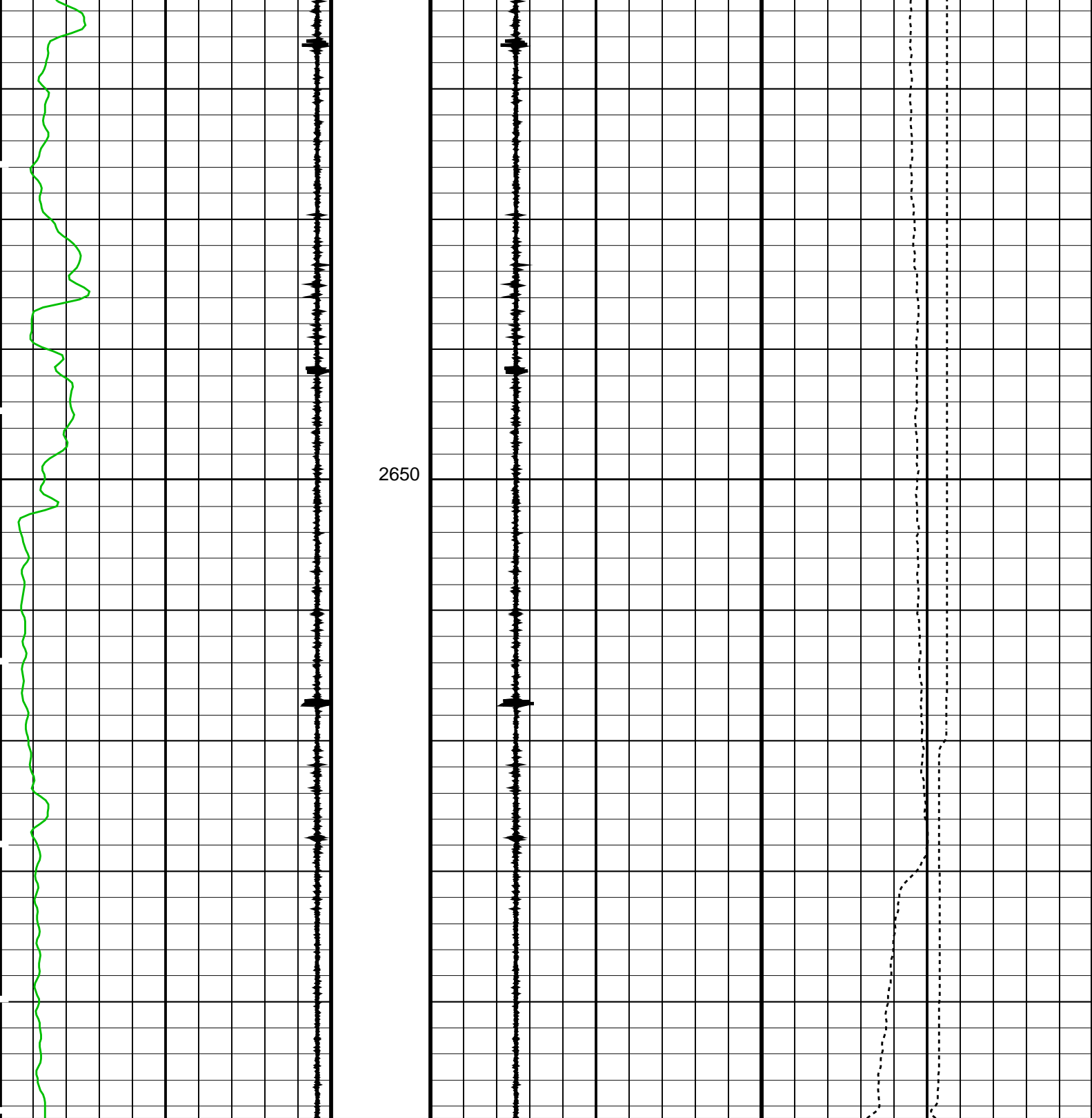




2600

2625





Gamma Ray (GR) (GAPI)		200
Casing Collar Locator (CCL)		1
Shifted Casing Collar Locator (SCCL)		10
Tension (TENS) (LBF)		6000
Cable Speed (CS) (M/HR)		5000

PIP SUMMARY

Time Mark Every 60 S
Format: PERFO Vertical Scale: 1:200 Graphics File Created: 07-May-2006 06:51

OP System Version: 14C0-302
MCM

SHM_GUN 14C0-302 PGGT-D 14C0-302

Company: **ExxonMobil**

Schlumberger

Well: **WKF W18a**

Field: **Bass Strait**

Rig: **453 / Prod 3**

Country: **Australia**

Junk Basket / 6" Gauge Ring
MAXR with 4.5" HSD