



Company: Esso Australia Ltd.

Well: A-9b

Field: Bream A

Rig : Prod4 / Crane

Country: Australia

2 1/8" Phased Powerjet  
MWPT  
Perforation Record

LOCATION	
Gippsland	Elev.: K.B. 32.82 m
Basin	G.L. -59 m
Bass Strait	D.F. 32.82 m
Permanent Datum:	M.S.L.
Log Measured From:	D.F.
Drilling Measured From:	D.F.
State: Victoria	Max. Well Deviation 48 deg
	Longitude 147 46'20.32673" E
	Latitude 38 29'58.84674" S

Logging Date 2-May-2006

Run Number 1

Depth Driller 2283 m

Schlumberger Depth 2230 m – Tagged

Bottom Log Interval 2209 m

Top Log Interval 2206 m

Casing Fluid Type Production Fluids

Salinity

Density

Fluid Level

BIT/CASING/TUBING STRING

Bit Size 8.500 in

From

To

Casing/Tubing Size 7.000 in

Weight 26 lbm/ft

Grade L-80

From 1650.5 m

To 2283 m

Maximum Recorded Temperatures 97 degC

Logger On Bottom 2-May-2006 3:40

Unit Number 1 AU SL

Recorded By P Tarrant

Witnessed By B Robinson

Oil Density

Water Salinity

Gas Gravity

Bo

Bw

1/Bg

Bubble Point Pressure

Bubble Point Temperature

Solution GOR

Maximum Deviation

CEMENTING DATA

Primary/Squeeze

Casing String No

Lead Cement Type

Volume

Density

Water Loss

Additives

Tail Cement Type

Volume

Density

Water Loss

Additives

Expected Cement Top

Logging Date

Run Number

Depth Driller

Schlumberger Depth

Bottom Log Interval

Top Log Interval

Casing Fluid Type

Salinity

Density

Fluid Level

BIT/CASING/TUBING STRING

Bit Size

From

To

Casing/Tubing Size

Weight

Grade

From

To

Maximum Recorded Temperatures

Logger On Bottom 3:40

Unit Number 1

Recorded By P Tarrant

Witnessed By B Robinson

Run 1

Run 2

Run 3

## DEPTH SUMMARY LISTING

Date Created: 2-MAY-2006 0:39:49

## Depth System Equipment

Depth Measuring Device		Tension Device		Logging Cable	
Type:	IDW-H	Type:	CMTD-B/A	Type:	2-23ZT
Serial Number:	797	Serial Number:	1037	Serial Number:	22372
Calibration Date:	01 May 2005	Calibration Date:	01 Apr 2006	Length:	5049.93 M
Calibrator Serial Number:	1009	Calibrator Serial Number:	1174	Conveyance Method:	Wireline
Calibration Cable Type:	2-32ZT	Calibration Gain:	1.37	Rig Type:	Offshore_Fixed
Wheel Correction 1:	-3	Calibration Offset:	635.00		
Wheel Correction 2:	-3				

## Depth Control Parameters

Log Sequence:	Subsequent Trip To the Well
Reference Log Name:	Solar Log
Reference Log Run Number:	Unknown
Reference Log Date:	Unknown

### Depth Control Remarks

1.	
2.	
3.	
4.	
5.	
6.	

## DISCLAIMER

THE USE OF AND RELIANCE UPON THIS RECORDED-DATA BY THE HEREIN NAMED COMPANY (AND ANY OF ITS AFFILIATES, PARTNERS, REPRESENTATIVES, AGENTS, CONSULTANTS AND EMPLOYEES) IS SUBJECT TO THE TERMS AND CONDITIONS AGREED UPON BETWEEN SCHLUMBERGER AND THE COMPANY, INCLUDING: (a) RESTRICTIONS ON USE OF THE RECORDED-DATA; (b) DISCLAIMERS AND WAIVERS OF WARRANTIES AND REPRESENTATIONS REGARDING COMPANY'S USE OF AND RELIANCE UPON THE RECORDED-DATA; AND (c) CUSTOMER'S FULL AND SOLE RESPONSIBILITY FOR ANY INFERENCE DRAWN OR DECISION MADE IN CONNECTION WITH THE USE OF THIS RECORDED-DATA.

## OTHER SERVICES1

OS1: None  
OS2:  
OS3:  
OS4:  
OS5:

## REMARKS: RUN NUMBER 1









Log correlated to ExxonMobil Solar correlation composite log supplied by K Kuttan.  
Maximum well deviation = 48 degrees at 900m MDPB.

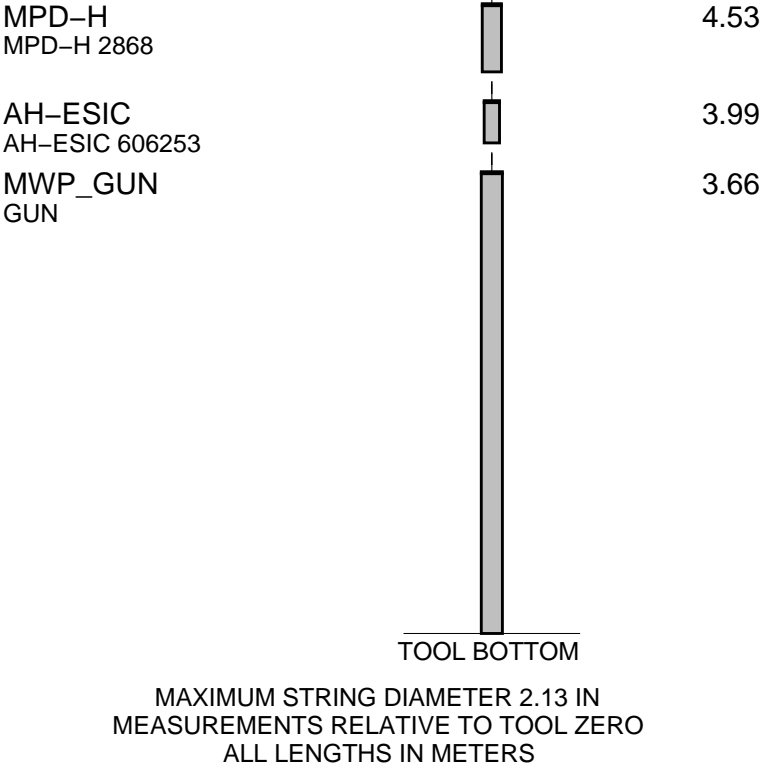
Objective:  
Perforate the interval 2206m to 2209m MDKB using 2 1/8" Enerjet Guns loaded with PowerSpirol charges.

A 300psi Underbalance was not attempted as there are no current perforations in the well.					
API Data					
Penetration: 30.4"					
Entrance Hole: 0.32"					
Crew:					
G Martin & K Kerr					

RUN 1			RUN 2		
SERVICE ORDER #: AUSL06103810			SERVICE ORDER #:		
PROGRAM VERSION: 14C0-302			PROGRAM VERSION:		
FLUID LEVEL:			FLUID LEVEL:		
LOGGED INTERVAL	START	STOP	LOGGED INTERVAL	START	STOP

EQUIPMENT DESCRIPTION					
RUN 1			RUN 2		

SURFACE EQUIPMENT					
MWPM-AA					
DOWNHOLE EQUIPMENT					
AH-SWBS AH-SWBS 761		11.79			
AH-SWBS AH-SWBS 762		11.10			
AH-SWBS AH-SWBS 763		10.42			
MH-SWHS MH-SWHS 726		9.73			
MWGT-AA MWPG-AA 19 MWGH-AA 19		9.40			
	MWPG GR	2.41			
MWPT-CA MWPH-AA 74 MWPS-AA 74		8.42			
	CCL SMWP Pres SMWP Temp Tension	TOOL ZERO			
AH-Flex AH-Flex 41		5.60			
AH-SAH-G AH-SAH-G 1035		5.07			



Client: Esso Australia Ltd

Well: BMA A-9b

Field: Bream

State: Victoria

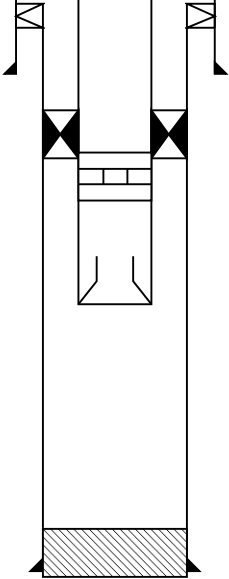

Country: Australia

Rig Name: Prod 4 / Crane

Reference Datum: Derrick Floor

Elevation: 32.8 m

Production String	(in)		(m)	Well Schematic	(m)	(in)		Casing String
	OD	ID	MD		MD	OD	ID	
Tubing Hanger	13.375	3.500	11.3					Casing String Liner Hanger
Tubing	3.500		11.3		13.0 13.0	13.375 13.375	9.625	
Shutin Valve	3.500		443.8					
Gas Lift Mandrel	3.500		559.0					
Gas Lift Mandrel	3.500		904.0		794.0	13.375		Casing Shoe
Gas Lift Mandrel	3.500		1104.3					
Gas Lift Mandrel	3.500		1247.4					
Nipple	3.500		1263.5					

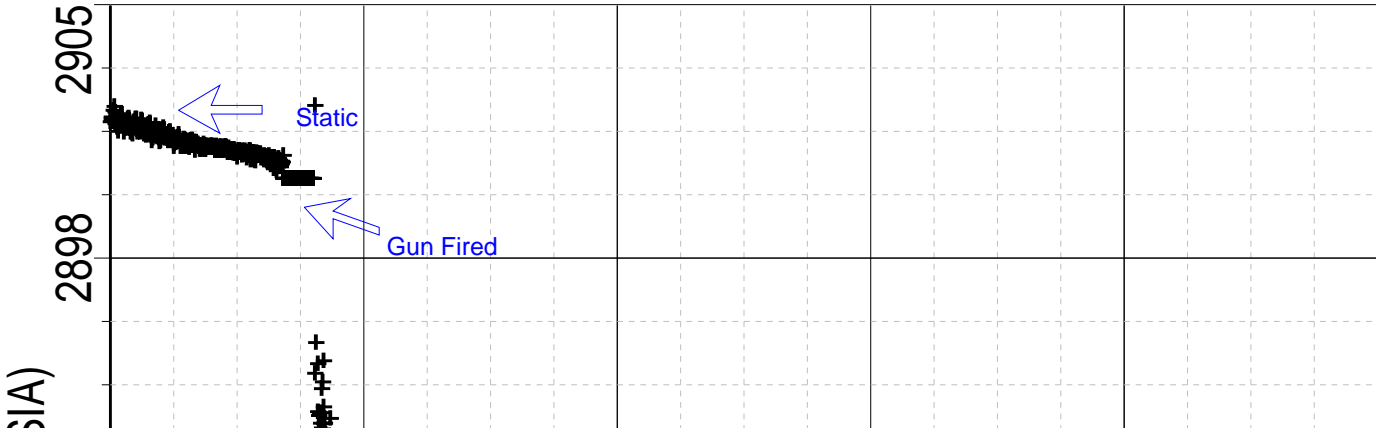
					1650.6 1650.6 1769.0	7.000 9.625 9.625	7.000	Casing String Liner Hanger Casing Shoe
Packer	7.000	3.500	2018.2					
Nipple		3.500	2024.3					
Bell Nipple Guide		3.500	2038.0					
					2240.0 2283.0	7.000		PBTD Casing Shoe

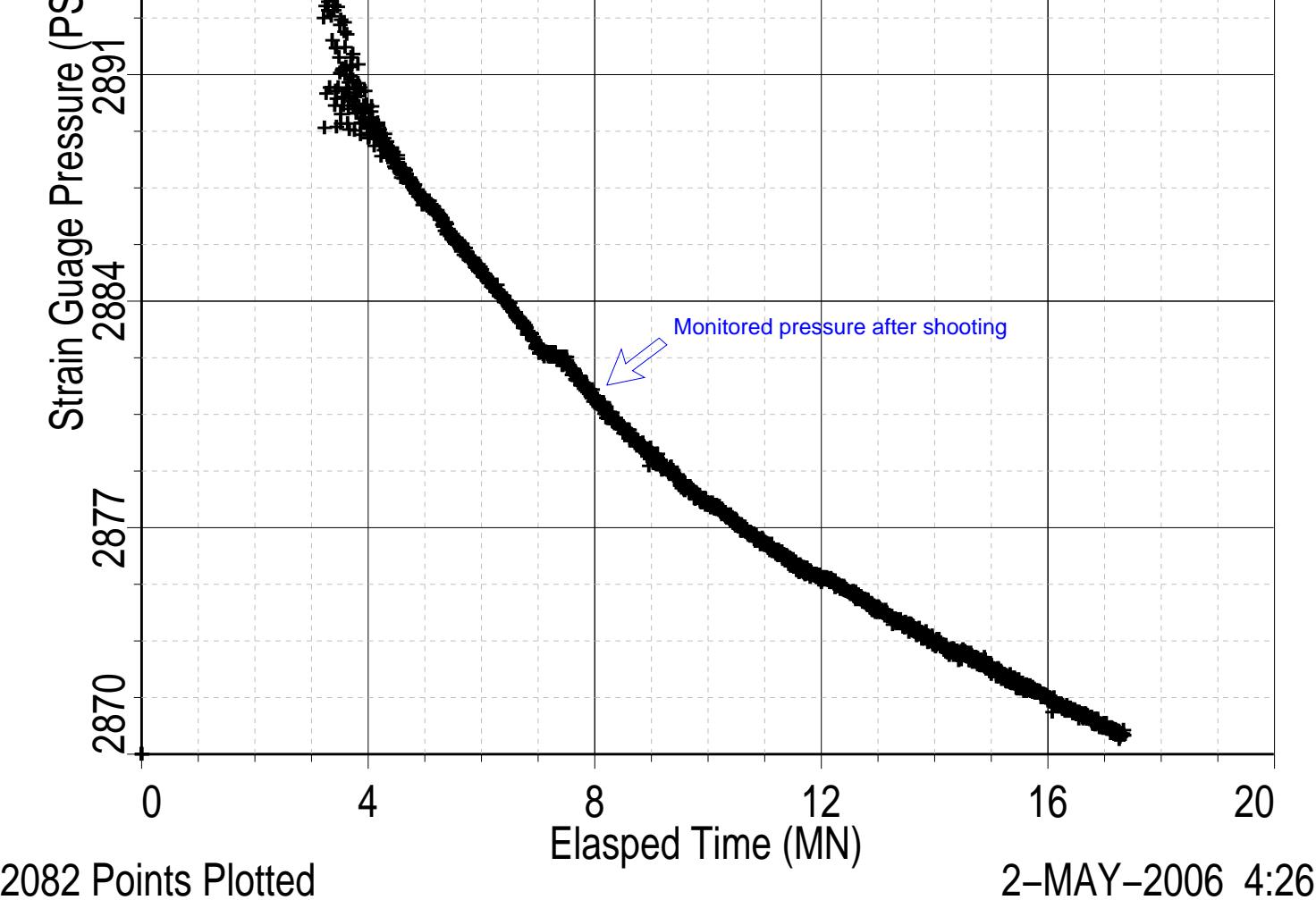


2 1/8" MWPT Enerjet Gun  
Station Log

MAXIS Field Log

Index: 11485.9 – 16771.6 M

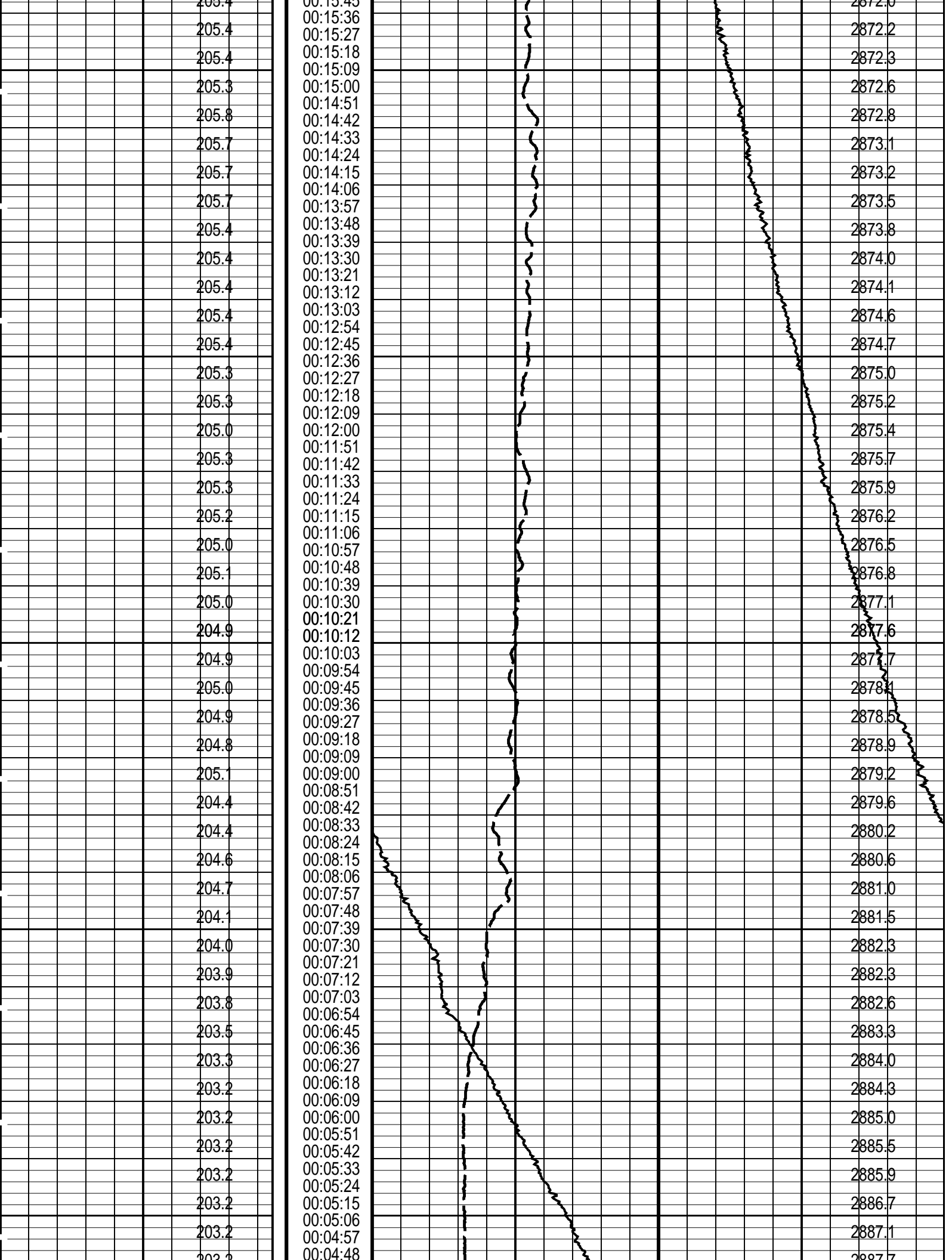




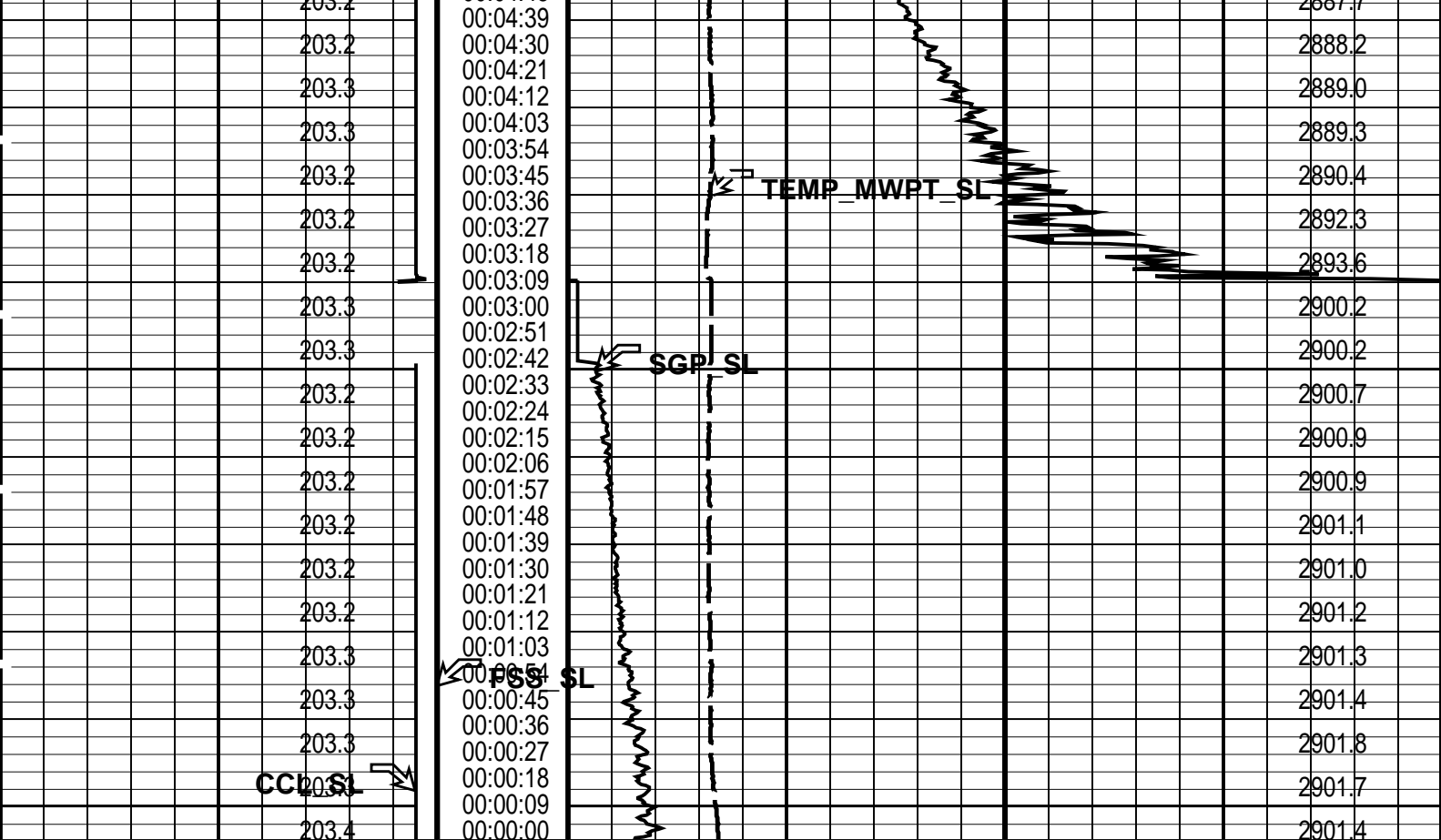
Output DLIS Files						
DEFAULT	PERFO_010LTP	FN:9	PRODUCER	02-May-2006 03:48	2202.6 M	2.7 M
OP System Version: 14C0-302						
MCM						
MWP_GUN	14C0-302	MWPT-CA		14C0-302		
MWGT-AA	14C0-302					

PIP SUMMARY	
<input checked="" type="checkbox"/> Time Mark Every 60 S	

Temperature (TEMP_MWPT_SL) (DEGF)		Pressure (SGPA_SL) (PSIA)	
CCL From CCL to T1		Temperature (TEMP_MWPT_SL) (DEGF)	
Firing Sequence State (FSS SL) (----)		0 20	
0 1024			
Casing Collar Locator (CCL_SL) (----)		Strain Gauge Pressure (SGP_SL) (PSIA)	
-19 1		0 20	
205.4	00:17:15		2870.7
205.7	00:17:06		2870.9
205.4	00:16:57		2871.1
205.4	00:16:48		2871.3
205.7	00:16:39		2871.5
205.6	00:16:30		2871.7
205.4	00:16:21		2872.0
205.4	00:16:12		
205.4	00:16:03		
205.4	00:15:54		
205.4	00:15:45		







Casing Collar Locator (CCL_SL)		Elapsed Time (ETIM) (S)	Strain Gauge Pressure (SGP_SL)	
-19	(----) 1		0	(PSIA) 20
CCL From CCL to T1		Firing Sequence State (FSS SL)	Temperature (TEMP_MWPT_SL)	
		(----)		
		0 1024		
	Temperature (TEMP_MWPT_SL) (DEGF)			Pressure (SGPA_SL) (PSIA)

PIP SUMMARY

Time Mark Every 60 S

Parameters		
DLIS Name	Description	Value
MWPT-CA: MEASUREMENT WHILE PERFORATING TOOL		
DEVI_FL_CORR	Deviation Angle for Flow Line Correction	0 DEG
FLD	Flow Line Density	1 G/C3
MWPT_NULL_SOURCE	MWPT NULL Temperature Source	TEMS
MWPT_NULL_TEMP	MWPT NULL Temperature	0.0 DEGC

Format: MWP\_SL Vertical Scale: 1" per 60S Graphics File Created: 02-May-2006 03:48

OP System Version: 14C0-302			
MCM			
MWP_GUN	14C0-302	MWPT-CA	14C0-302
MWGT-AA	14C0-302		

Output DLIS Files			
DEFAULT	PERFO_010LTP	FN:9	PRODUCER 02-May-2006 03:48

Output DLIS Files

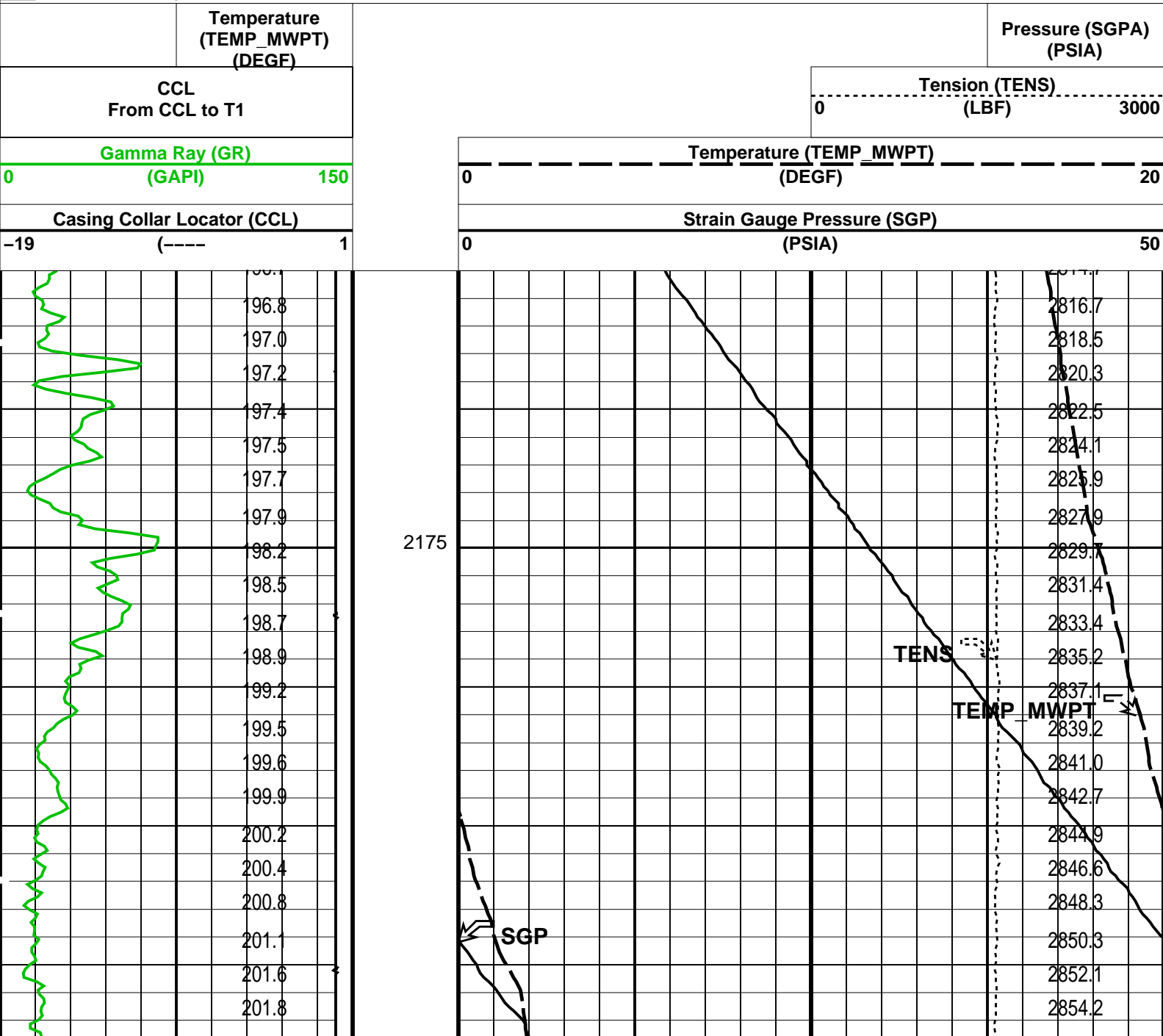
DEFAULT      PERFO\_009LUP      FN:8      PRODUCER      02-May-2006 03:46      2219.9 M      2165.0 M

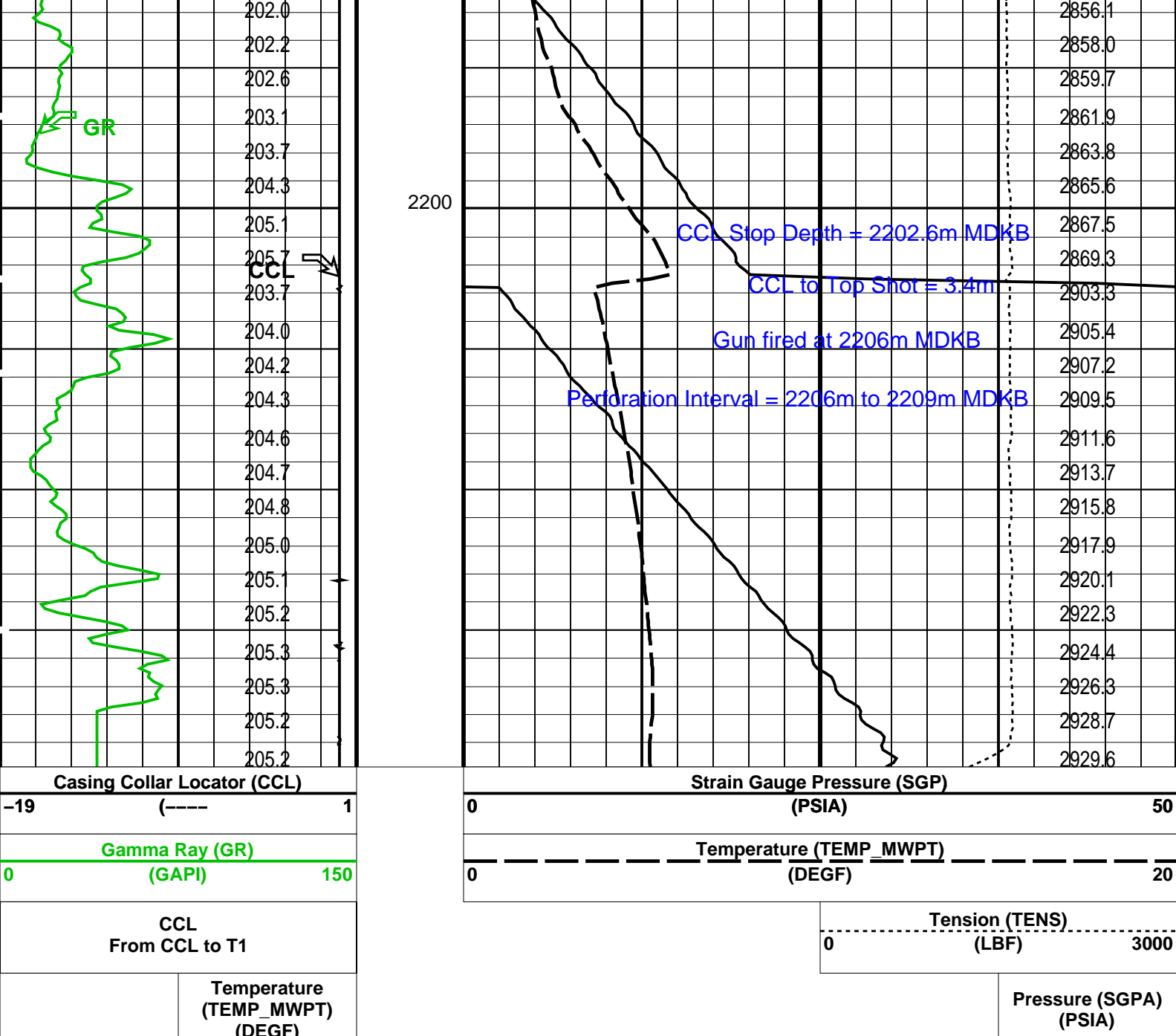
OP System Version: 14C0-302  
MCM

MWP\_GUN      14C0-302      MWPT-CA      14C0-302  
MWGT-AA      14C0-302

PIP SUMMARY

Time Mark Every 60 S





#### PIP SUMMARY

Time Mark Every 60 S

#### Parameters

DLIS Name	Description	Value
MWPT-CA: MEASUREMENT WHILE PERFORATING TOOL		
DEVI_FL_CORR	Deviation Angle for Flow Line Correction	0 DEG
FLD	Flow Line Density	1 G/C3
MWPT_NULL_SOURCE	MWPT NULL Temperature Source	TEMS
MWPT_NULL_TEMP	MWPT NULL Temperature	0.0 DEGC

Format: MWP Vertical Scale: 1:200

Graphics File Created: 02-May-2006 03:46

#### OP System Version: 14C0-302

MCM

MWP_GUN	14C0-302	MWPT-CA	14C0-302
MWGT-AA	14C0-302		

#### Output DLIS Files

DEFAULT PERFO\_009LUP FN:8 PRODUCER 02-May-2006 03:46

2 1/8" MWPT Enerjet Gun  
Correlation Pass

MAXIS Field Log

Output DLIS Files

DEFAULT PERFO\_008LUP FN:7 PRODUCER 02-May-2006 03:38 2229.9 M 2174.8 M

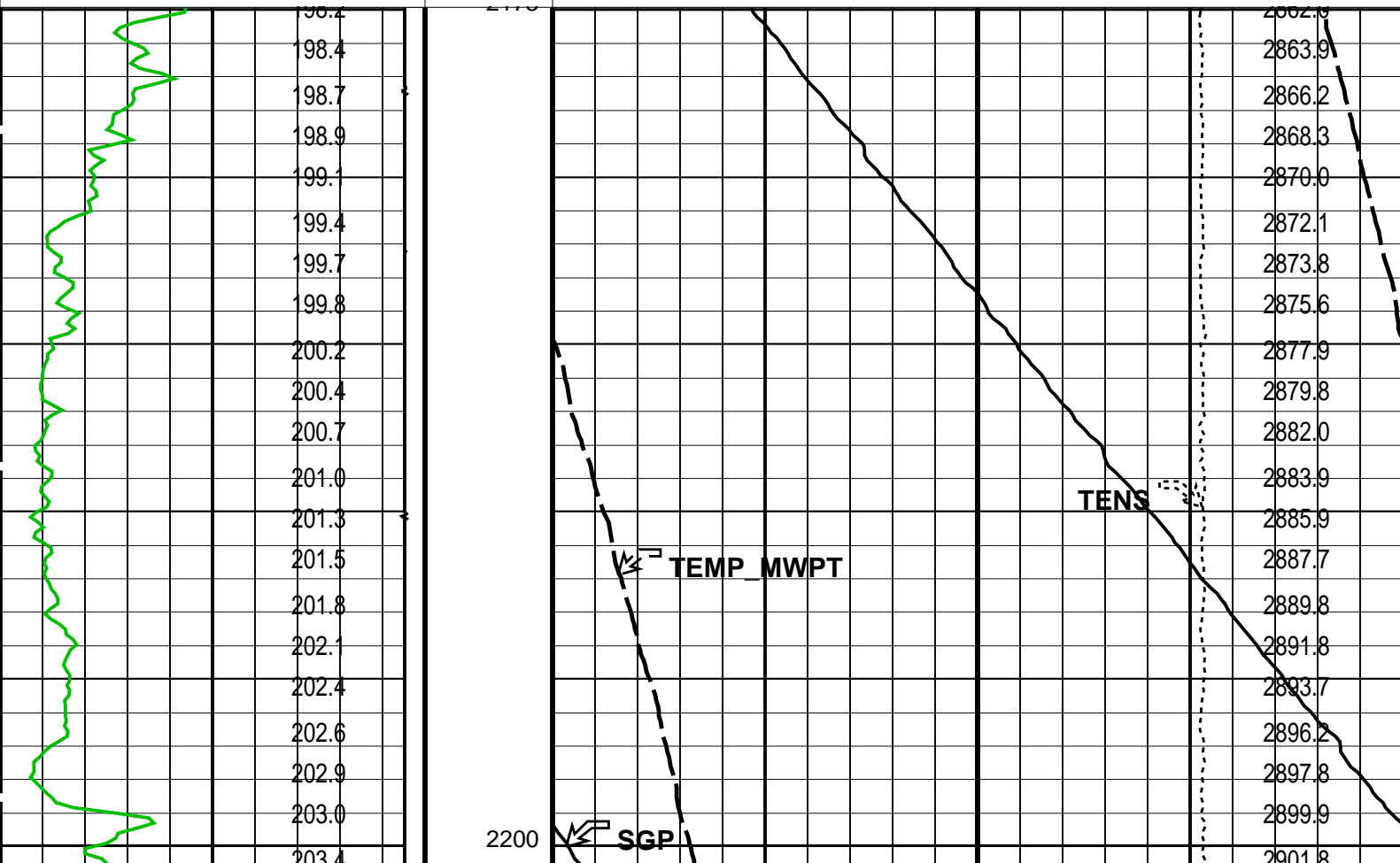
OP System Version: 14C0-302  
MCM

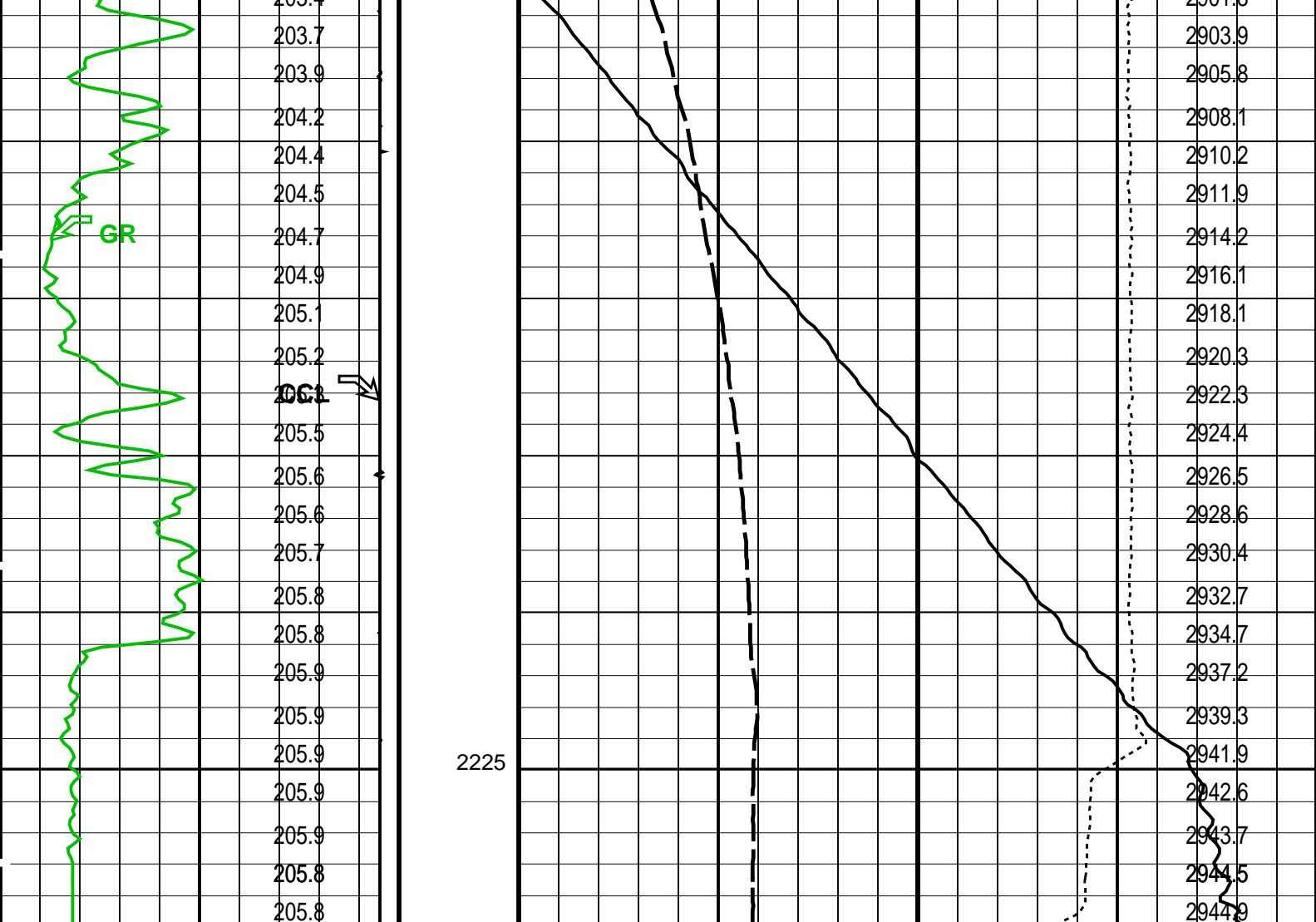
MWP\_GUN 14C0-302 MWPT-CA 14C0-302  
MWGT-AA 14C0-302

PIP SUMMARY

Time Mark Every 60 S

Temperature (TEMP_MWPT) (DEGF)	Pressure (SGPA) (PSIA)
CCL From CCL to T1	Tension (TENS) (LBF)
Gamma Ray (GR) (GAPI)	0 3000
0 150	
Casing Collar Locator (CCL)	Temperature (TEMP_MWPT) (DEGF)
-19 (----) 1	0 20
	Strain Gauge Pressure (SGP) (PSIA)
	0 50





Casing Collar Locator (CCL)		Strain Gauge Pressure (SGP)	
-19 (---- 1		0 (PSIA) 50	
Gamma Ray (GR)		Temperature (TEMP_MWPT)	
0 (GAPI) 150		0 (DEGF) 20	
CCL From CCL to T1		Tension (TENS)	
		0 (LBF) 3000	
Temperature (TEMP_MWPT) (DEGF)		Pressure (SGPA) (PSIA)	

PIP SUMMARY

Time Mark Every 60 S

Parameters		
DLIS Name	Description	Value
MWPT-CA: MEASUREMENT WHILE PERFORATING TOOL		
DEVI_FL_CORR	Deviation Angle for Flow Line Correction	0 DEG
FLD	Flow Line Density	1 G/C3
MWPT_NULL_SOURCE	MWPT NULL Temperature Source	TEMS
MWPT_NULL_TEMP	MWPT NULL Temperature	0.0 DEGC

Format: MWP Vertical Scale: 1:200 Graphics File Created: 02-May-2006 03:38

OP System Version: 14C0-302			
MCM			
MWP_GUN	14C0-302	MWPT-CA	14C0-302
MWGT-AA	14C0-302		

Output DLIS Files

Company:	Esso Australia Ltd.	Schlumberger
Well:	A-9b	
Field:	Bream A	
Rig :	Prod4 / Crane	
Country:	Australia	
	2 1/8" Phased Powerjet MWPT Perforation Record	