

Company: Esso Australia Ltd.

Well: A-15
Field: Bream A
Rig : Prod4 / Crane

Country: Australia

2 1/8" Phased Powerjet
MWPT
Perforation Record

Prod4 / Crane
Bream A
Gippsland
A-15
Esso Australia Ltd.

LOCATION

Gippsland
Basin
Bass Strait

Elev.:

G.L. -59 m
D.F. 33.5 m

Permanent Datum: _____
Log Measured From: D.F. _____
Drilling Measured From: D.F. _____

Elev.: 0 m
33.5 m above Perm. Datum

State: Victoria
Max. Well Deviation 32 deg
Longitude 147 46'20.41432" E
Latitude 038 29'58.852" S

Logging Date	2-May-2006		
Run Number	One		
Depth Driller	2107 m		
Schlumberger Depth	2100 m		
Bottom Log Interval	2100 m		
Top Log Interval	2050 m		
Casing Fluid Type	Production Fluids		
Salinity			
Density			
Fluid Level	1383 m		
BIT/CASING/TUBING STRING			
Bit Size	6.000 in		
From			
To			
Casing/Tubing Size	4.500 in		
Weight	12.6 lbn/ft		
Grade	L-80		
From	1783 m		
To	2129 m		
Maximum Recorded Temperatures	204 degf		
Logger On Bottom	2-May-2006		15:00
Unit Number	LEE001	Prod4 / Vea	
Recorded By	G Wright & P Tarrant		
Witnessed By	B White		

PVT DATA			Run 1
Oil Density			
Water Salinity			
Gas Gravity			
Bo			
Bw			
1/Bg			
Bubble Point Pressure			
Bubble Point Temperature			
Solution GOR			
Maximum Deviation	32 deg		
CEMENTING DATA			
Primary/Squeeze		Primary	
Casing String No			
Lead Cement Type			
Volume			
Density			
Water Loss			
Additives			
Tail Cement Type			
Volume			
Density			
Water Loss			
Additives			
Expected Cement Top			
Logging Date			
Run Number			
Depth Driller			
Schlumberger Depth			
Bottom Log Interval			
Top Log Interval			
Casing Fluid Type			
Salinity			
Density			
Fluid Level			
BIT/CASING/TUBING STRING			
Bit Size			
From			
To			
Casing/Tubing Size			
Weight			
Grade			
From			
To			
Maximum Recorded Temperatures			
Logger On Bottom			
Unit Number			
Recorded By			
Witnessed By			

DEPTH SUMMARY LISTING

Date Created: 2-MAY-2006 0:39:49

Depth System Equipment

Depth Measuring Device		Tension Device		Logging Cable	
Type:	IDW-H	Type:	CMTD-B/A	Type:	2-23ZT
Serial Number:	797	Serial Number:	1037	Serial Number:	22372
Calibration Date:	01 May 2005	Calibration Date:	01 Apr 2006	Length:	5049.93 M
Calibrator Serial Number:	1009	Calibrator Serial Number:	1174	Conveyance Method: Wireline Rig Type: Offshore_Fixed	
Calibration Cable Type:	2-32ZT	Calibration Gain:	1.37		
Wheel Correction 1:	-3	Calibration Offset:	635.00		
Wheel Correction 2:	-3				

Depth Control Parameters

Log Sequence:	Subsequent Trip To the Well
Reference Log Name:	Solar Log
Reference Log Run Number:	
Reference Log Date:	
Subsequent Trip Down Log Correction:	

Depth Control Remarks

1.
2.
3.
4.
5.
6.

DISCLAIMER

THE USE OF AND RELIANCE UPON THIS RECORDED-DATA BY THE HEREIN NAMED COMPANY (AND ANY OF ITS AFFILIATES, PARTNERS, REPRESENTATIVES, AGENTS, CONSULTANTS AND EMPLOYEES) IS SUBJECT TO THE TERMS AND CONDITIONS AGREED UPON BETWEEN SCHLUMBERGER AND THE COMPANY, INCLUDING: (a) RESTRICTIONS ON USE OF THE RECORDED-DATA; (b) DISCLAIMERS AND WAIVERS OF WARRANTIES AND REPRESENTATIONS REGARDING COMPANY'S USE OF AND RELIANCE UPON THE RECORDED-DATA; AND (c) CUSTOMER'S FULL AND SOLE RESPONSIBILITY FOR ANY INFERENCE DRAWN OR DECISION MADE IN CONNECTION WITH THE USE OF THIS RECORDED-DATA.

OTHER SERVICES1
OS1: None

REMARKS: RUN NUMBER 1
Log correlated to ExxonMobil Solar correlation composite log supplied by K Kuttan.
Maximum well deviation = 32 degrees at 1986m MDKB.
2 1/8" 45 degree phased Powerjets used for this perforation.
Interval perforated was 2096.8m to 2100m MDKB.
Well pressure and temperature prior to perforation
was 2704 psia,183.8 degf.

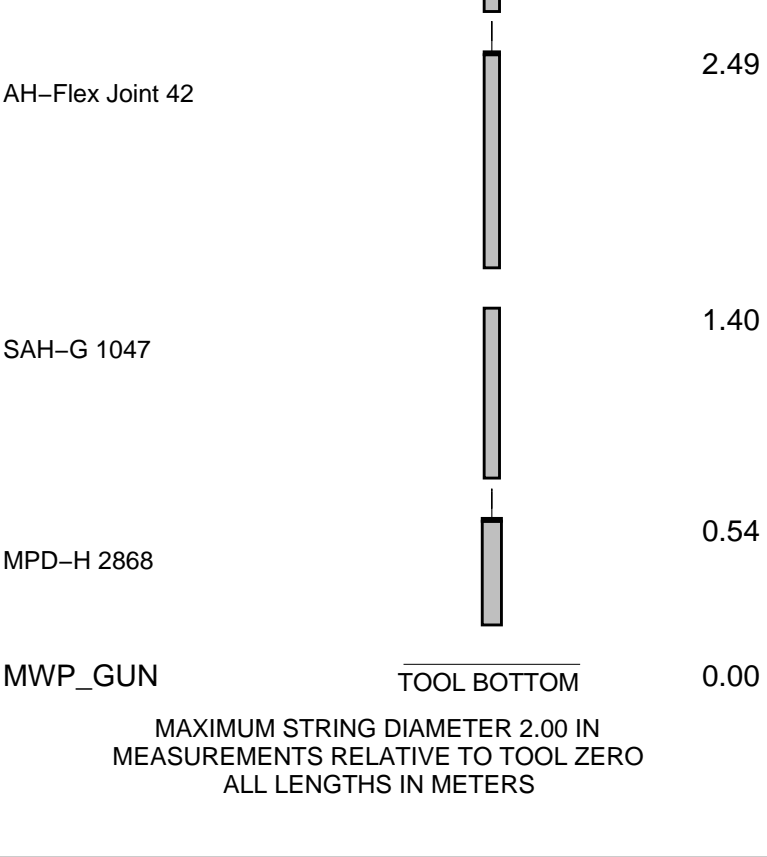
Following gun being fired,2670 psia,192 degf.
An underbalance of approx 100 psia was obtained before firing the gun.

Crew : A Hall,L Dooley,K Kerr,G Martin.

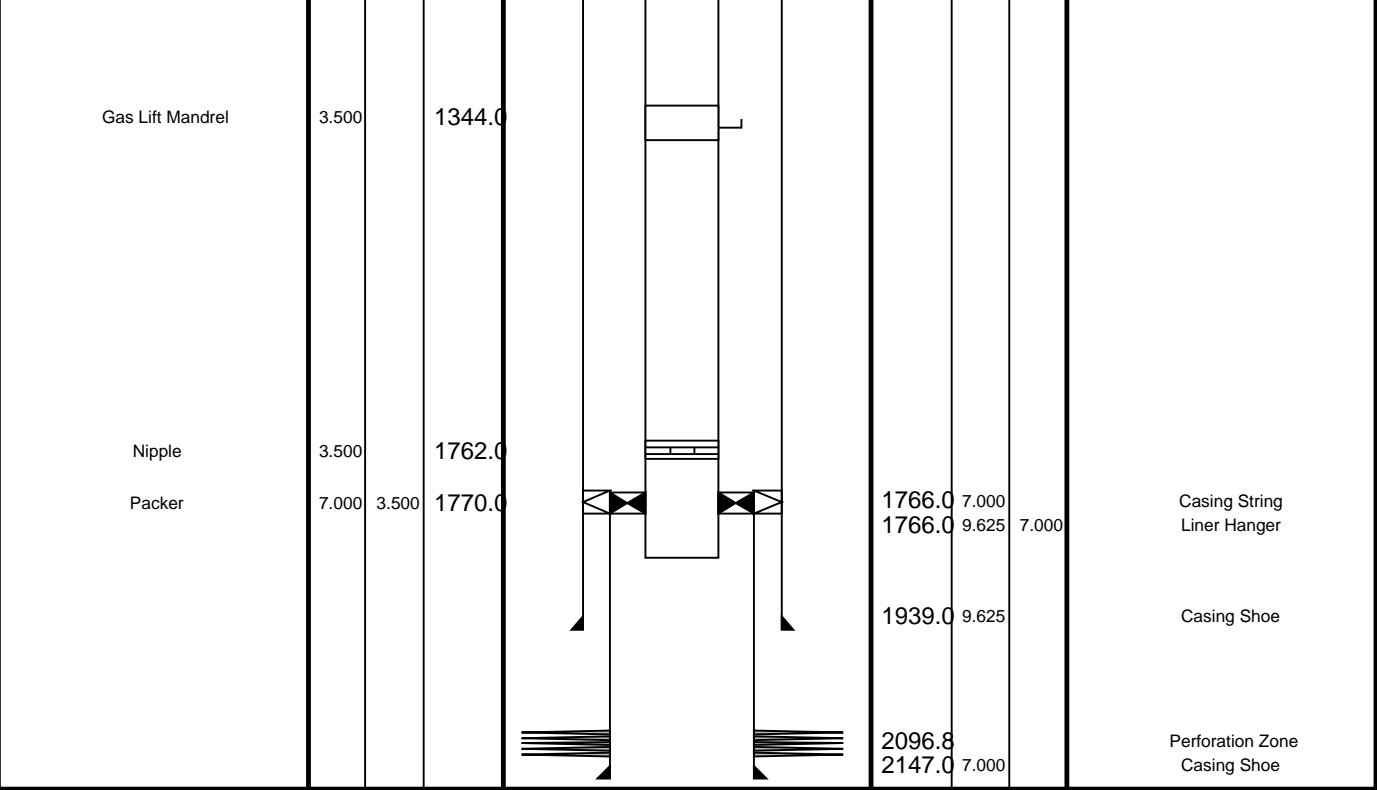
RUN 1			RUN 2		
SERVICE ORDER #:			SERVICE ORDER #:		
PROGRAM VERSION:			PROGRAM VERSION:		
FLUID LEVEL:			FLUID LEVEL:		
LOGGED INTERVAL	START	STOP	LOGGED INTERVAL	START	STOP

EQUIPMENT DESCRIPTION

RUN 1	
SURFACE EQUIPMENT	
MWPM-AA 3008	
DOWNHOLE EQUIPMENT	
MH-22	7.38
AH-SWHS 726	6.90
AH-124	6.60
MWPG-AA MWGH-AA 19	6.29
MWPG GR	2.41
MWPH-AA 74 MWPS-AA	5.31
CCL SMWP Pres SMWP Temp Tension	TOOL ZERO



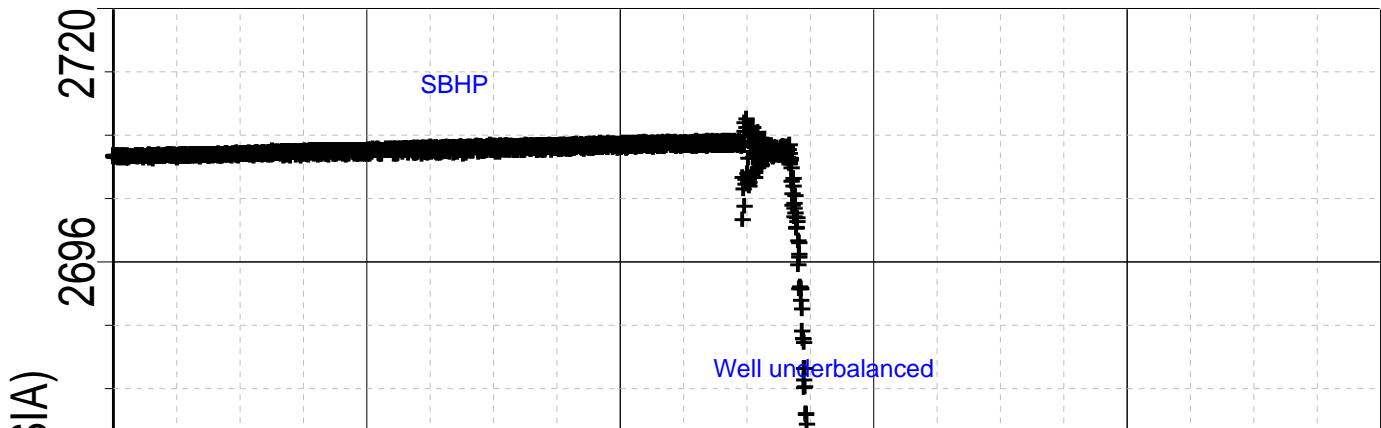
Production String	(in)		(m)	Well Schematic	(m)	(in)		Casing String
	OD	ID	MD		MD	OD	ID	
Tubing Hanger	9.625	3.500	91.8		13.6	13.375	9.625	Casing String Liner Hanger
Tubing	9.625	3.500	91.8		12.5	13.375	9.625	
Shutin Valve	3.500		455.0					
Gas Lift Mandrel	3.500		491.0					
Gas Lift Mandrel	3.500		858.0					
					972.0	13.375		Casing Shoe

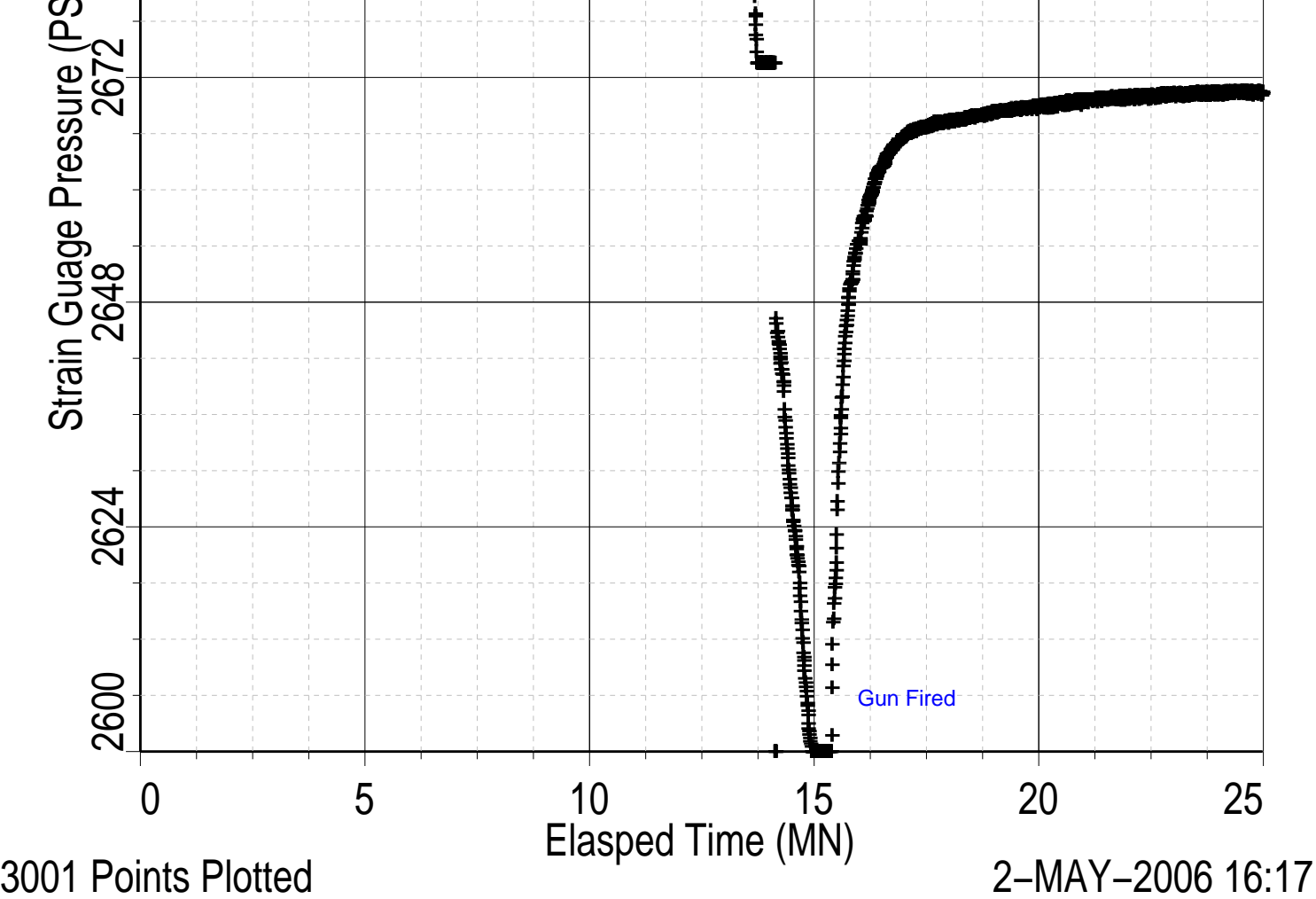


Gun Fired @ 2093.3m MDKB
Zone 2096.8m to 2100m MDKB

MAXIS Field Log

Index: 24003.0 – 32087.8 M





TIME	DEGF	PSIA
6300.0	191.42	2670.037
6240.0	191.46	2670.451
6180.0	191.79	2670.479
6120.0	191.95	2670.134
6060.0	192.03	2669.801
6000.0	192.47	2669.641
5940.0	192.70	2668.902
5880.0	192.94	2668.488
5820.0	193.38	2667.501
5760.0	193.89	2666.380
5700.0	197.20	2659.303
5640.0	204.18	2590.125
5580.0	183.81	2642.196
5520.0	183.92	2706.326
5460.0	183.82	2707.380
5400.0	183.90	2707.083
5340.0	183.86	2706.976
5280.0	183.83	2707.004
5220.0	183.81	2706.945
5160.0	183.82	2706.842
5100.0	183.90	2706.784
5040.0	183.82	2706.397
4980.0	183.76	2706.400
4920.0	183.79	2706.364
4860.0	183.85	2706.202
4800.0	183.79	2706.019

4740.0 183.82 2705.992

Schlumberger

Shooting Pass

MAXIS Field Log

Output DLIS Files

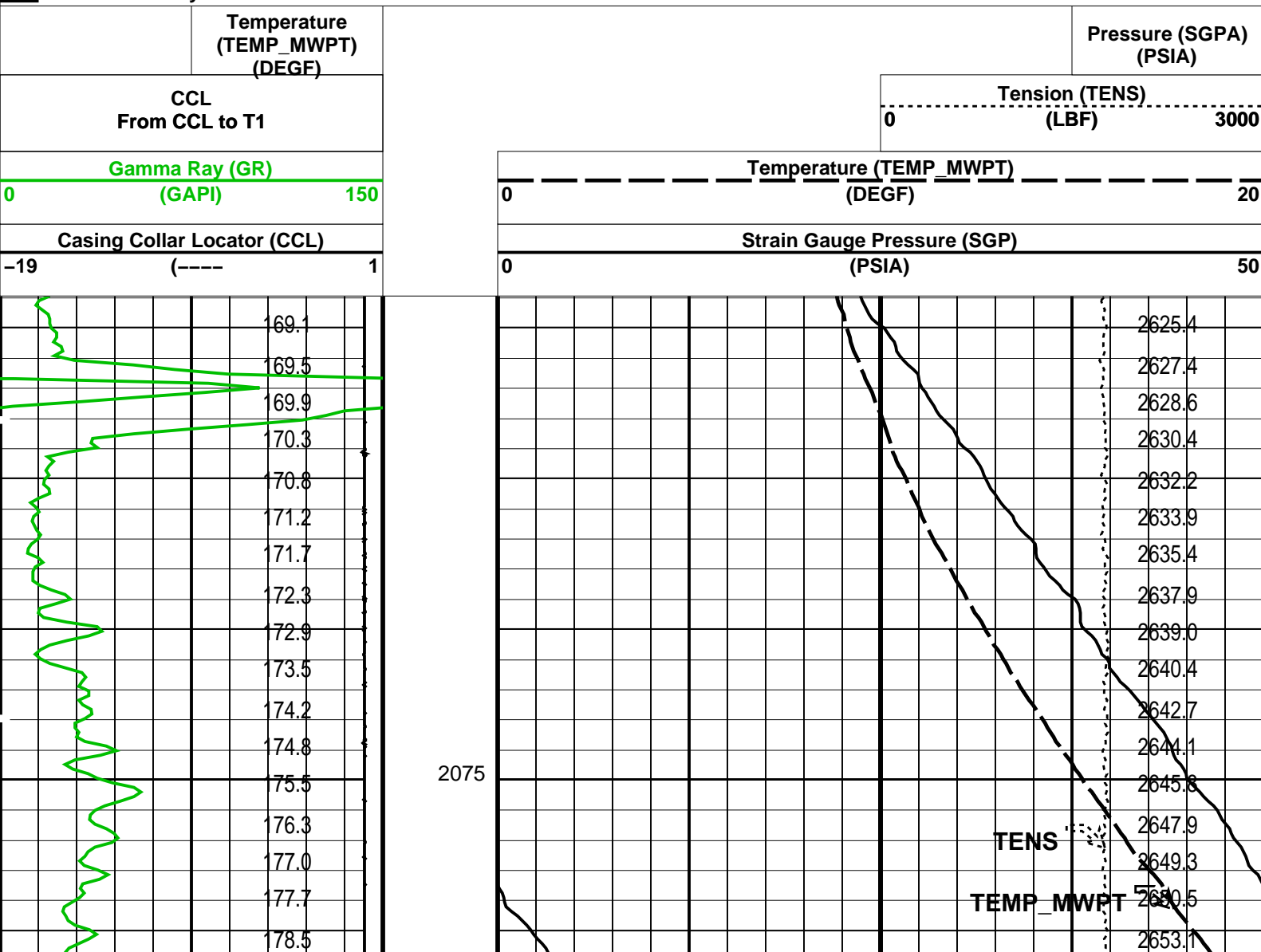
DEFAULT PERFO_011LUP FN:10 PRODUCER 02-May-2006 15:40

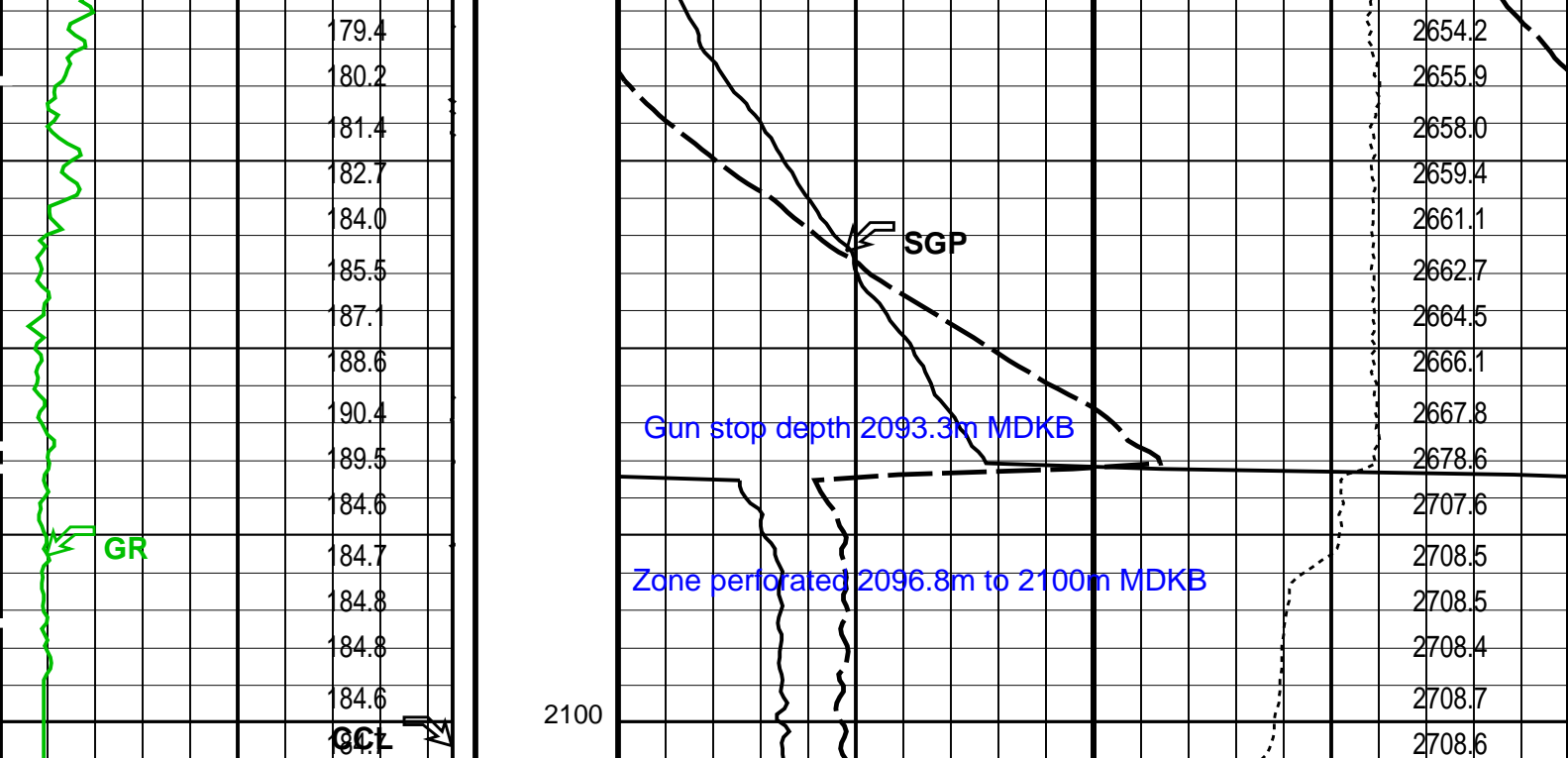
OP System Version: 14C0-302
MCM

MWP_GUN 14C0-302 MWPT-CA 14C0-302
MWGT-AA 14C0-302

PIP SUMMARY

☒ Time Mark Every 60 S





Casing Collar Locator (CCL)		Strain Gauge Pressure (SGP)	
-19 (----) 1		0 (PSIA) 50	
Gamma Ray (GR)		Temperature (TEMP_MWPT)	
0 (GAPI) 150		0 (DEGF) 20	
CCL From CCL to T1		Tension (TENS)	
Temperature (TEMP_MWPT) (DEGF)		0 (LBF) 3000	
		Pressure (SGPA) (PSIA)	

PIP SUMMARY

Time Mark Every 60 S

Parameters

DLIS Name	Description	Value
MWPT-CA: MEASUREMENT WHILE PERFORATING TOOL		
DEVI_FL_CORR	Deviation Angle for Flow Line Correction	0 DEG
FLD	Flow Line Density	1 G/C3
MWPT_NULL_SOURCE	MWPT NULL Temperature Source	TEMS
MWPT_NULL_TEMP	MWPT NULL Temperature	0.0 DEGC

Format: MWP Vertical Scale: 1:200 Graphics File Created: 02-May-2006 15:40

OP System Version: 14C0-302

MCM

MWP_GUN	14C0-302	MWPT-CA	14C0-302
MWGT-AA	14C0-302		

Output DLIS Files

DEFAULT PERFO_011LUP FN:10 PRODUCER 02-May-2006 15:40

Schlumberger

Correlation Pass

Output DLIS Files

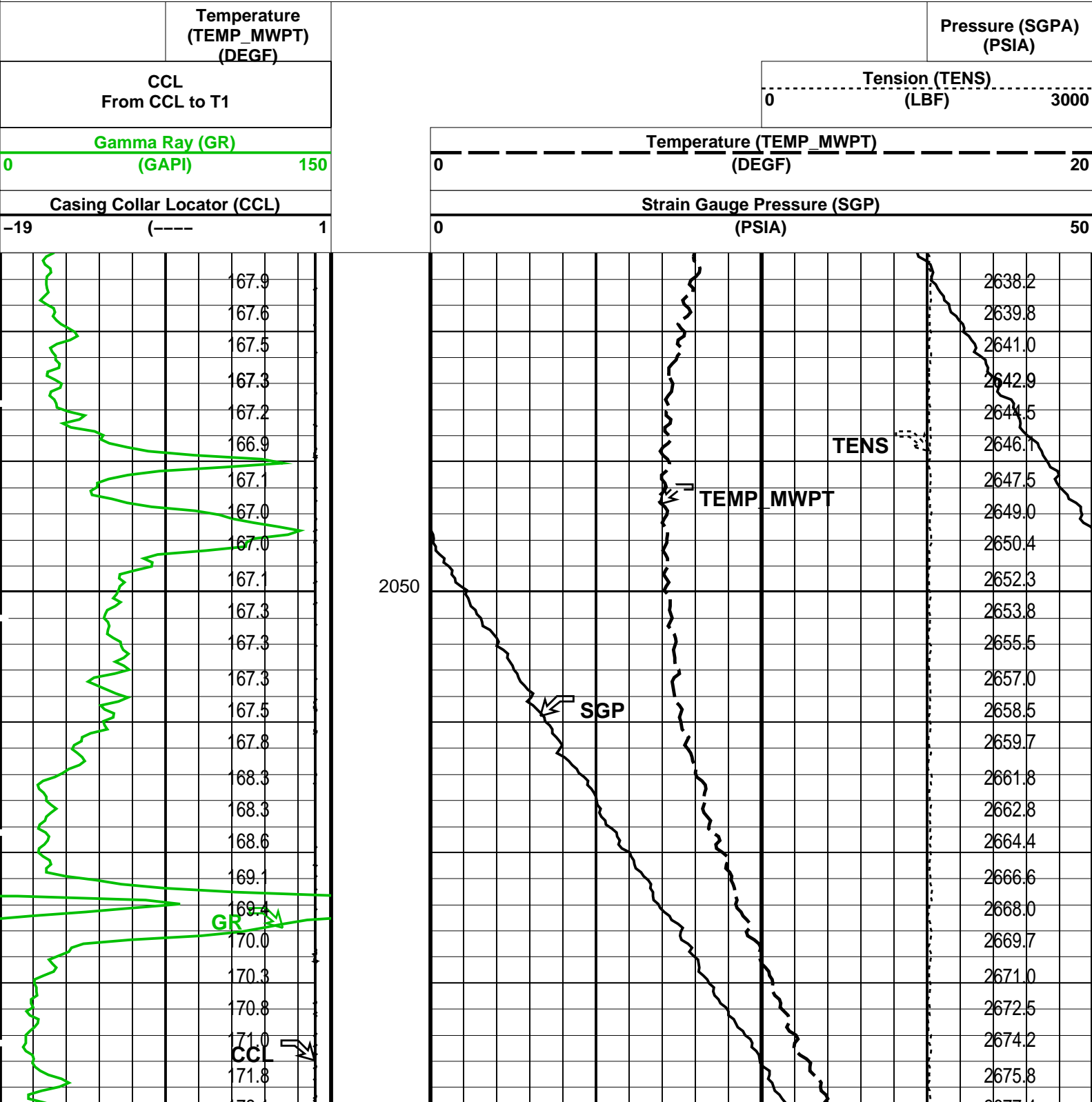
DEFAULT PERFO_010LUP FN:9 PRODUCER 02-May-2006 15:32 2072.6 M 2037.0 M

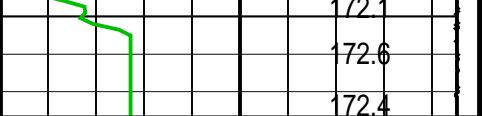
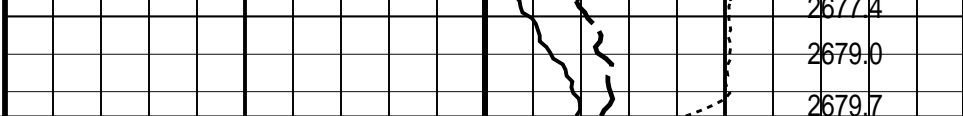
OP System Version: 14C0-302
MCM

MWP_GUN 14C0-302 MWPT-CA 14C0-302
MWGT-AA 14C0-302

PIP SUMMARY

Time Mark Every 60 S



			
Casing Collar Locator (CCL)		Strain Gauge Pressure (SGP)	
-19 (----) 1		0 (PSIA) 50	
Gamma Ray (GR)		Temperature (TEMP_MWPT)	
0 (GAPI) 150		0 (DEGF) 20	
CCL From CCL to T1		Tension (TENS) (LBF) 0 3000	
Temperature (TEMP_MWPT) (DEGF)		Pressure (SGPA) (PSIA)	

PIP SUMMARY

 Time Mark Every 60 S

Parameters

DLIS Name	Description	Value
MWPT-CA: MEASUREMENT WHILE PERFORATING TOOL		
DEVI_FL_CORR	Deviation Angle for Flow Line Correction	0 DEG
FLD	Flow Line Density	1 G/C3
MWPT_NULL_SOURCE	MWPT NULL Temperature Source	TEMS
MWPT_NULL_TEMP	MWPT NULL Temperature	0.0 DEGC

Format: MWP Vertical Scale: 1:200 Graphics File Created: 02-May-2006 15:32

OP System Version: 14C0-302

MCM

MWP_GUN	14C0-302	MWPT-CA	14C0-302
MWGT-AA	14C0-302		

Output DLIS Files

DEFAULT PERFO_010LUP FN:9 PRODUCER 02-May-2006 15:32

Company: **Esso Australia Ltd.**

Schlumberger

Well: **A-15**

Field: **Bream A**

Rig : **Prod4 / Crane**

Country: **Australia**

2 1/8" Phased Powerjet
MWPT
Perforation Record