

Company: Esso Australia Ltd.

Well: A-23a
Field: Bream A
Rig : Prod4 / Crane

Country: Australia

Prod4 / Crane
Rig :
Field: Bream A
Location: Gippsland
Well: A-23a
Company: Esso Australia Ltd.

PSP Dummy Plug
7" Posiset Plug
Dump Bailer Record

LOCATION		
Gippsland	Elev.: K.B. 32.82 m	
Basin	G.L. -59 m	
Bass Strait	D.F. 32.82 m	
Permanent Datum:	M.S.L. _____	
Log Measured From:	D.F. _____	
Drilling Measured From:	D.F. _____	

State: Victoria	Max. Well Deviation 65 deg	Longitude 147 46'20.326" E	Latitude 038 29'58.846" S
-----------------	----------------------------	----------------------------	---------------------------

Logging Date	5-May-2006		
Run Number	2 - 5		
Depth Driller	3297.5 m		
Schlumberger Depth	3175 m - Tagged		
Bottom Log Interval	3162 m		
Top Log Interval	3159 m		
Casing Fluid Type	Production Fluids		
Salinity			
Density			
Fluid Level			
BIT/CASING/TUBING STRING			
Bit Size	8.500 in		
From			
To			
Casing/Tubing Size	7.000 in		
Weight	26 lbn/ft		
Grade	L-80		
From	10.1 m		
To	3297.5 m		
Maximum Recorded Temperatures	207 degC		
Logger On Bottom	5-May-2006	7:30	
Unit Number	1	AUSL	
Recorded By	G Wright & P Tarrant		
Witnessed By	B White & B Robinson		

PVT DATA

Oil Density	Run 1	Run 2	Run 3
Water Salinity			
Gas Gravity			
Bo			
Bw			
1/Bg			
Bubble Point Pressure			
Bubble Point Temperature			
Solution GOR			
Maximum Deviation	65 deg		
CEMENTING DATA			
Primary/Squeeze	Primary		
Casing String No			
Lead Cement Type			
Volume			
Density			
Water Loss			
Additives			
Tail Cement Type			
Volume			
Density			
Water Loss			
Additives			
Expected Cement Top			

Logging Date			
Run Number			
Depth Driller			
Schlumberger Depth			
Bottom Log Interval			
Top Log Interval			
Casing Fluid Type			
Salinity			
Density			
Fluid Level			
BIT/CASING/TUBING STRING			
Bit Size			
From			
To			
Casing/Tubing Size			
Weight			
Grade			
From			
To			
Maximum Recorded Temperatures			
Logger On Bottom			
Unit Number			
Recorded By			
Witnessed By			

DEPTH SUMMARY LISTING

Date Created: 5-MAY-2006 07:02:36

Depth System Equipment

Depth Measuring Device		Tension Device		Logging Cable	
Type:	IDW-H	Type:	CMTD-B/A	Type:	2-23ZT
Serial Number:	797	Serial Number:	1037	Serial Number:	22372
Calibration Date:	01 May 2005	Calibration Date:	01 Apr 2006	Length:	5049.93 M
Calibrator Serial Number:	1009	Calibrator Serial Number:	1174	Conveyance Method: Wireline Rig Type: Offshore_Fixed	
Calibration Cable Type:	2-32ZT	Calibration Gain:	1.37		
Wheel Correction 1:	-3	Calibration Offset:	635.00		
Wheel Correction 2:	-3				

Depth Control Parameters

Log Sequence:	Subsequent Trip To the Well
Reference Log Name:	Solar Log
Reference Log Run Number:	Unknown
Reference Log Date:	Unknown

Depth Control Remarks

1.
2.
3.
4.
5.
6.

DISCLAIMER

THE USE OF AND RELIANCE UPON THIS RECORDED-DATA BY THE HEREIN NAMED COMPANY (AND ANY OF ITS AFFILIATES, PARTNERS, REPRESENTATIVES, AGENTS, CONSULTANTS AND EMPLOYEES) IS SUBJECT TO THE TERMS AND CONDITIONS AGREED UPON BETWEEN SCHLUMBERGER AND THE COMPANY, INCLUDING: (a) RESTRICTIONS ON USE OF THE RECORDED-DATA; (b) DISCLAIMERS AND WAIVERS OF WARRANTIES AND REPRESENTATIONS REGARDING COMPANY'S USE OF AND RELIANCE UPON THE RECORDED-DATA; AND (c) CUSTOMER'S FULL AND SOLE RESPONSIBILITY FOR ANY INFERENCE DRAWN OR DECISION MADE IN CONNECTION WITH THE USE OF THIS RECORDED-DATA.

OTHER SERVICES1
OS1: 2 1/8" MWPT Enerjet
OS2:
OS3:
OS4:
OS5:
REMARKS: RUN NUMBER 1
Log correlated to ExxonMobil Solar correlation composite log supplied by K Kuttan.
Maximum well deviation = 65 degrees at 3302m MDKB.
Objective:
RIH with dummy plug for depth determination and SBHT.
SBHT = 207degC
Set 7" Borejet plug at 3170m MDKB.

MPEX-DA 7
MPEX-DA 7

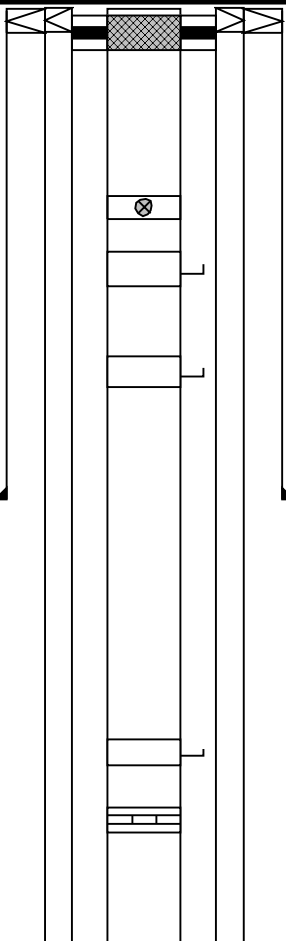
3.20

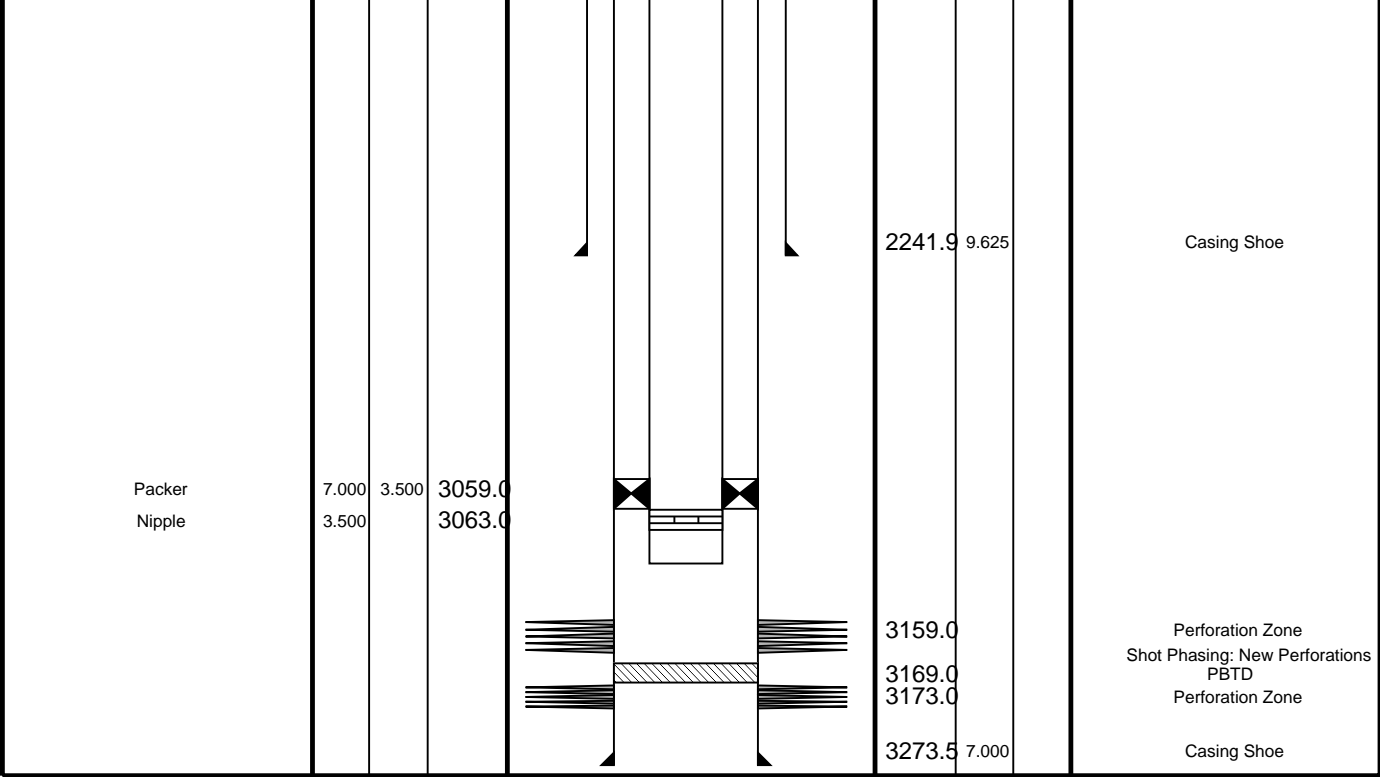
TOOL BOTTOM

MAXIMUM STRING DIAMETER 2.13 IN
MEASUREMENTS RELATIVE TO TOOL ZERO
ALL LENGTHS IN METERS

TOOL BOTTOM

MAXIMUM STRING DIAMETER 2.13 IN
MEASUREMENTS RELATIVE TO TOOL ZERO
ALL LENGTHS IN METERS

Production String	(in)		(m)	Well Schematic	(m)	(in)		Casing String
	OD	ID	MD		MD	OD	ID	
Tubing Hanger	7.500	3.500	11.2		10.7	10.7	9.625	Casing String Liner Hanger
Shutin Valve	3.500		450.0					
Gas Lift Mandrel	3.500		565.0					
Gas Lift Mandrel	3.500		738.0					
					933.8	13.375		Casing Shoe
Gas Lift Mandrel	3.500		1471.0					
Nipple	3.500		1487.0					



Cement Dump Run

MAXIS Field Log

Input DLIS Files

DEFAULT	PERFO_033LUP	FN:30	PRODUCER	05-May-2006 17:34	3162.5 M	3117.3 M
---------	--------------	-------	----------	-------------------	----------	----------

Output DLIS Files

DEFAULT	PERFO_034PUP	FN:31	PRODUCER	05-May-2006 17:47	3163.8 M	3119.2 M
---------	--------------	-------	----------	-------------------	----------	----------

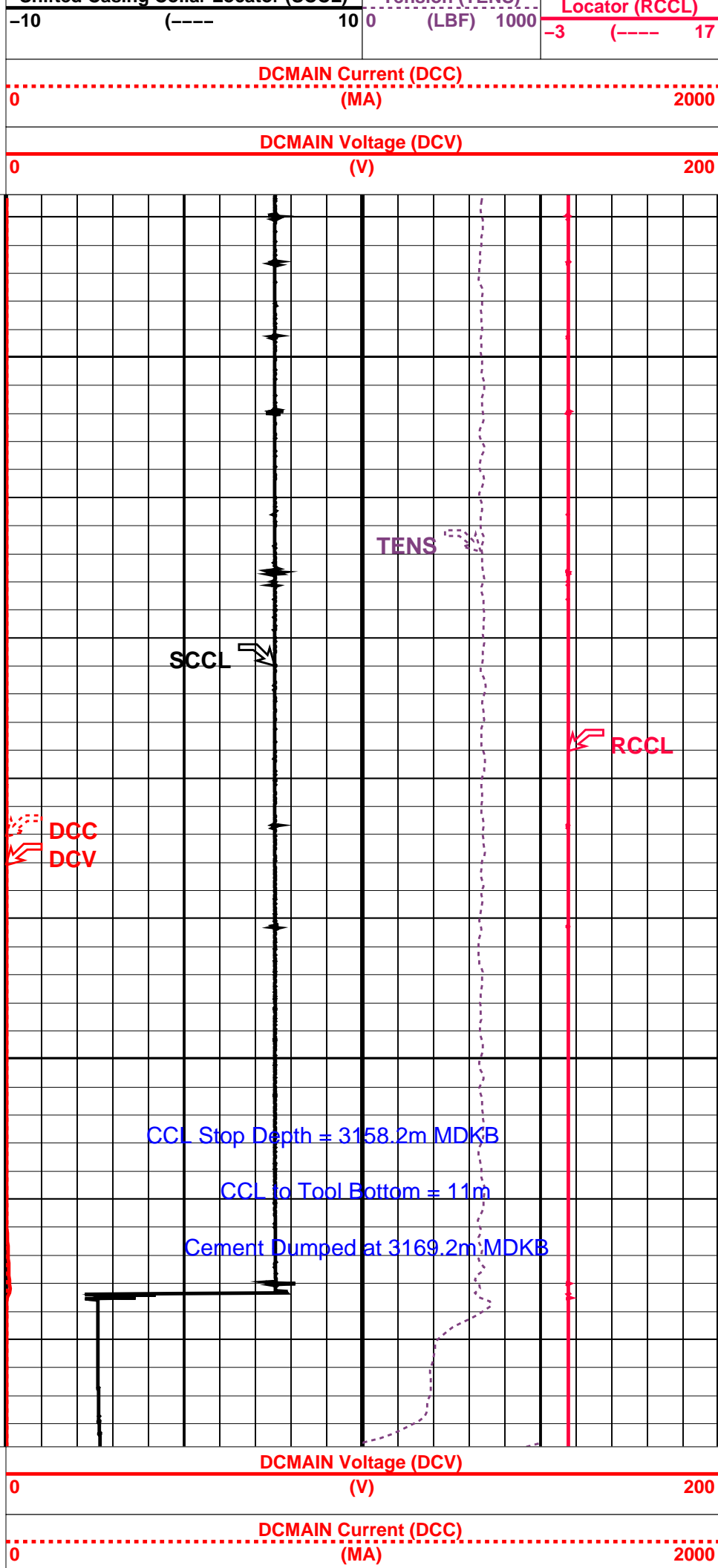
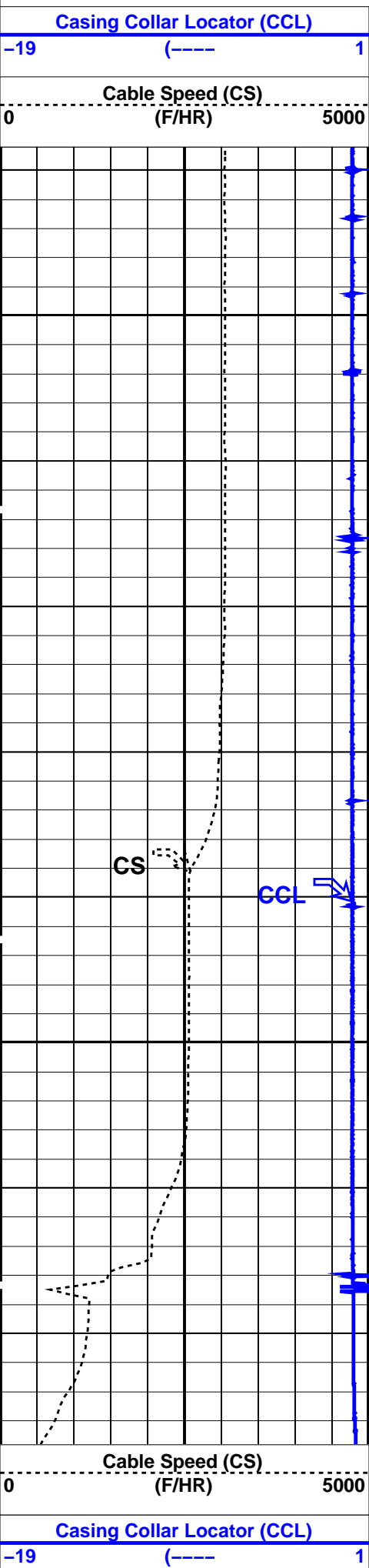
OP System Version: 14C0-302
MCM

SHM_GUN	14C0-302	CCL-L	14C0-302
---------	----------	-------	----------

PIP SUMMARY

└─ Casing Collars

 Time Mark Every 60 S



	Shifted Casing Collar Locator (SCCL)		Tension (TENS)	Raw Casing Collar Locator (RCCL)
	-10	(----10	0(LBF) 1000	-3(----17

PIP SUMMARY

Time Mark Every 60 S

Casing Collars

Parameters				
DLIS Name		Description	Value	
CCLD CCLT	CCL-L: Casing Collar Locator		12	IN
	CCL reset delay		0.3	V
	CCL Detection Level			
DO PP	System and Miscellaneous		1.3	M
	Depth Offset for Playback			
	Playback Processing		NORMAL	
Format: PERFO		Vertical Scale: 1:200		Graphics File Created: 05-May-2006 17:47

OP System Version: 14C0-302						
MCM						
SHM_GUN	14C0-302	CCL-L		14C0-302		
Input DLIS Files						
DEFAULT	PERFO_033LUP	FN:30	PRODUCER	05-May-2006 17:34	3162.5 M	3117.3 M
Output DLIS Files						
DEFAULT	PERFO_034PUP	FN:31	PRODUCER	05-May-2006 17:47		

Schlumberger

Water Dump Run

MAXIS Field Log

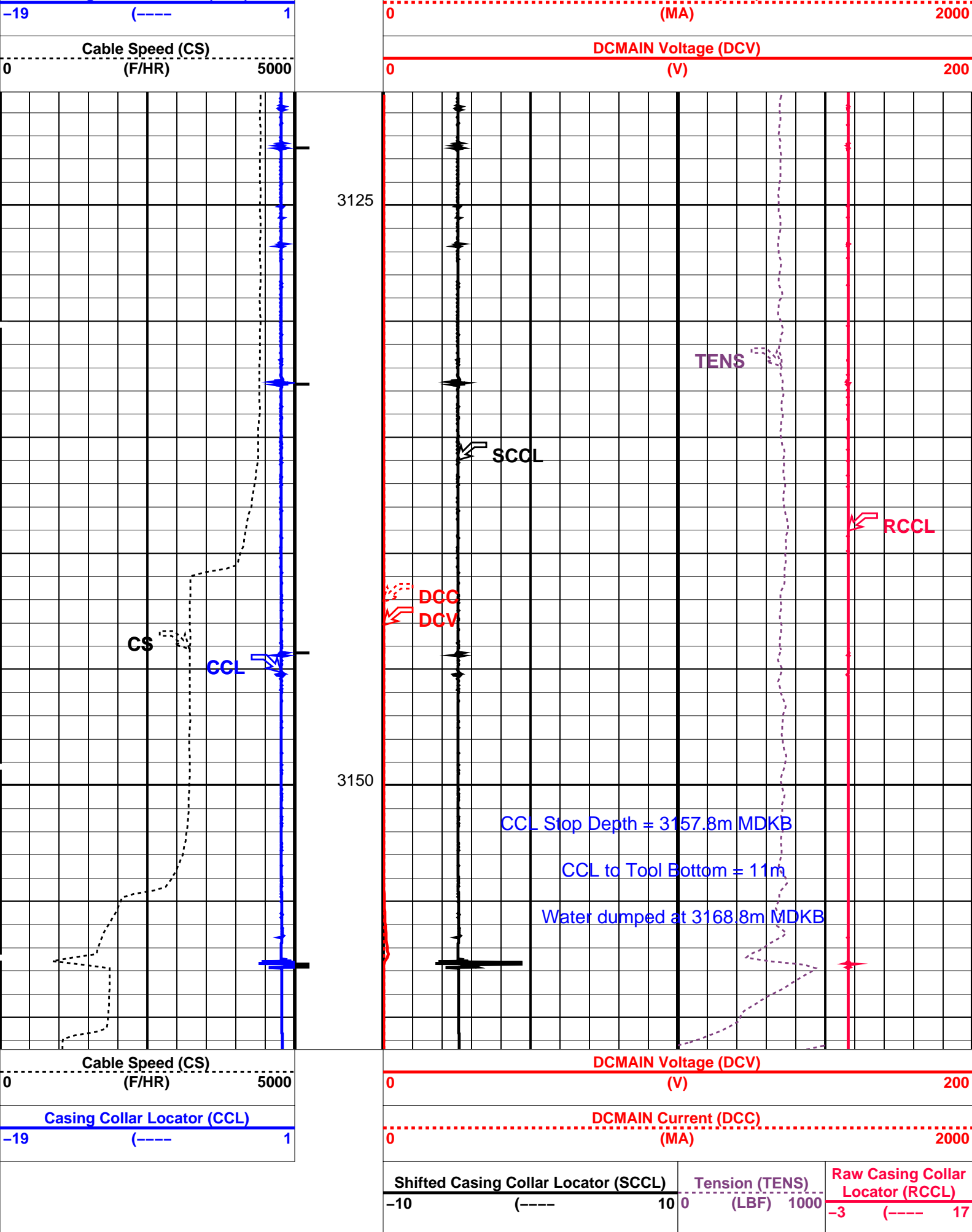
Input DLIS Files				
DEFAULT	PERFO_029LUP	FN:26	PRODUCER	05-May-2006 16:05 3160.9 M 3119.2 M
Output DLIS Files				
DEFAULT	PERFO_031PUP	FN:28	PRODUCER	05-May-2006 16:38 3161.4 M 3120.1 M
OP System Version: 14C0-302				
MCM				
SHM_GUN	14C0-302	CCL-L	14C0-302	

PIP SUMMARY

Time Mark Every 60 S

Casing Collars

	Shifted Casing Collar Locator (SCCL)		Tension (TENS)	Raw Casing Collar Locator (RCCL)
	-10	(----10	0(LBF) 1000	-3(----17
Casing Collar Locator (CCL)	DCMAIN Current (DCC)			




PIP SUMMARY

Parameters				
DLIS Name		Description	Value	
CCLD CCLT	CCL-L: Casing Collar	Locator		
		CCL reset delay	12	IN
		CCL Detection Level	0.3	V
System and Miscellaneous				
DO		Depth Offset for Playback	0.5	M
PP		Playback Processing	NORMAL	

Format: PERFO Vertical Scale: 1:200 Graphics File Created: 05-May-2006 16:38

OP System Version: 14C0-302				
MCM				
SHM_GUN	14C0-302	CCL-L	14C0-302	

Input DLIS Files						
DEFAULT	PERFO_029LUP	FN:26	PRODUCER	05-May-2006 16:05	3160.9 M	3119.2 M
Output DLIS Files						
DEFAULT	PERFO_031PUP	FN:28	PRODUCER	05-May-2006 16:38		



7" MPBT SETTING RECORD

MAXIS Field Log

Output DLIS Files				
DEFAULT	CCL_023LUP	FN:21	PRODUCER	05-May-2006 13:25

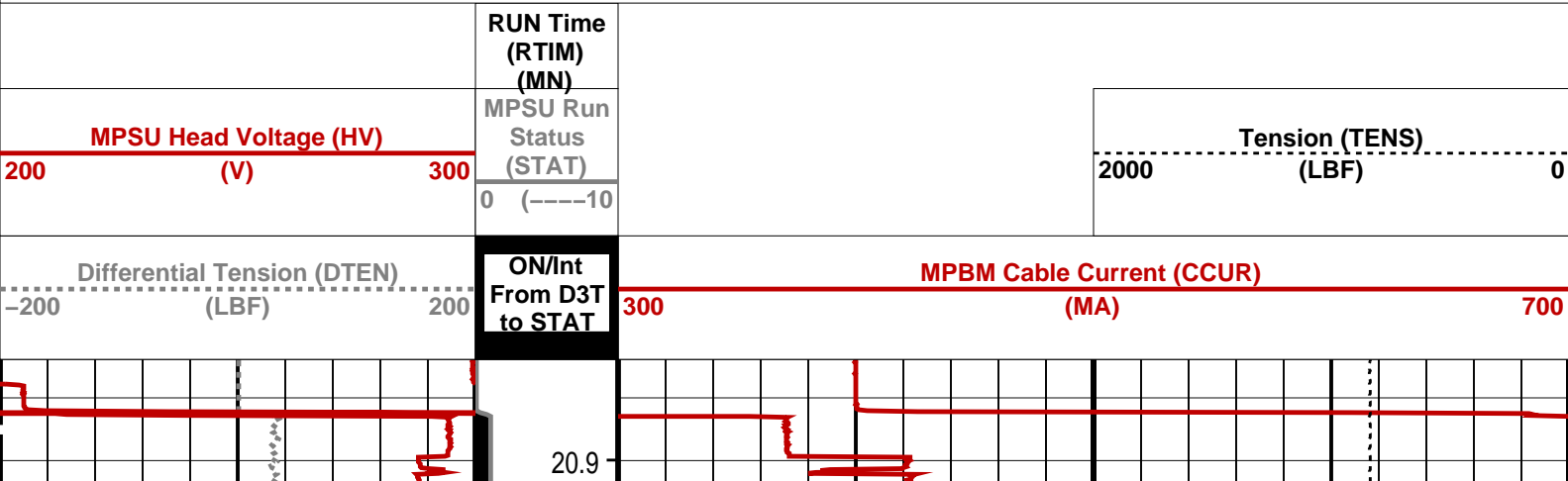
OP System Version: 14C0-302				
MCM				
MPEX-DA	14C0-302	MPSU-CA	14C0-302	
CCL-L	14C0-302			

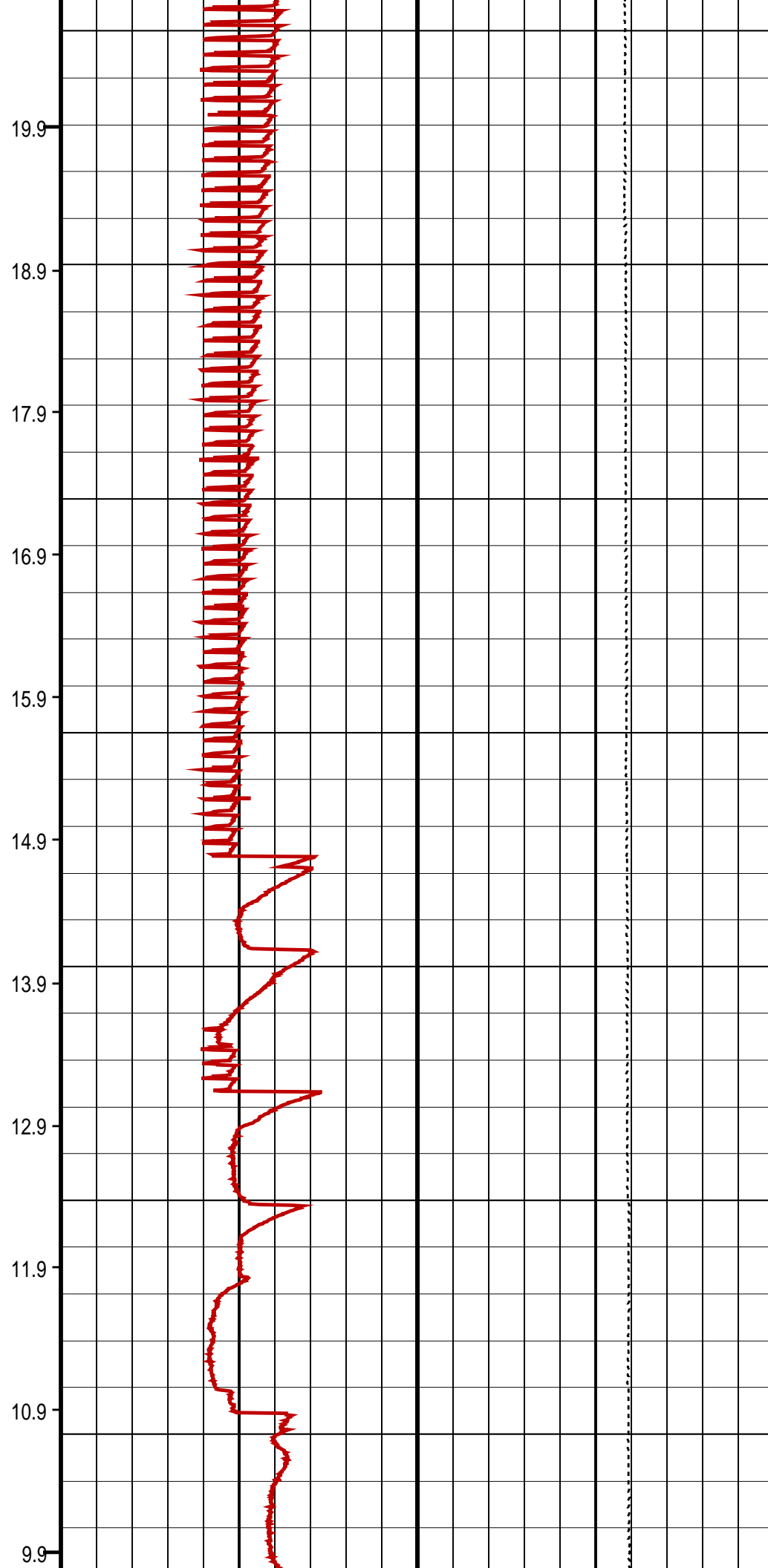
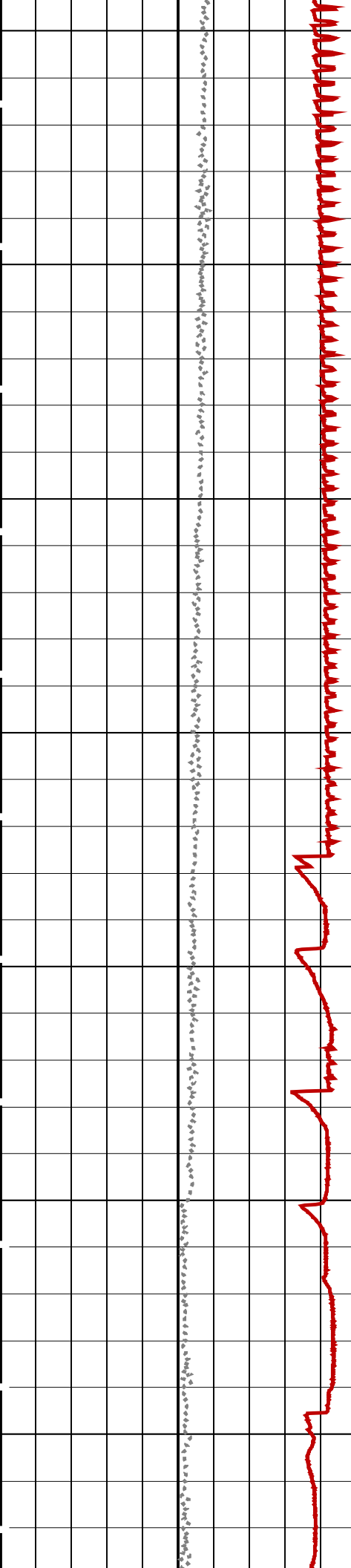
PIP SUMMARY

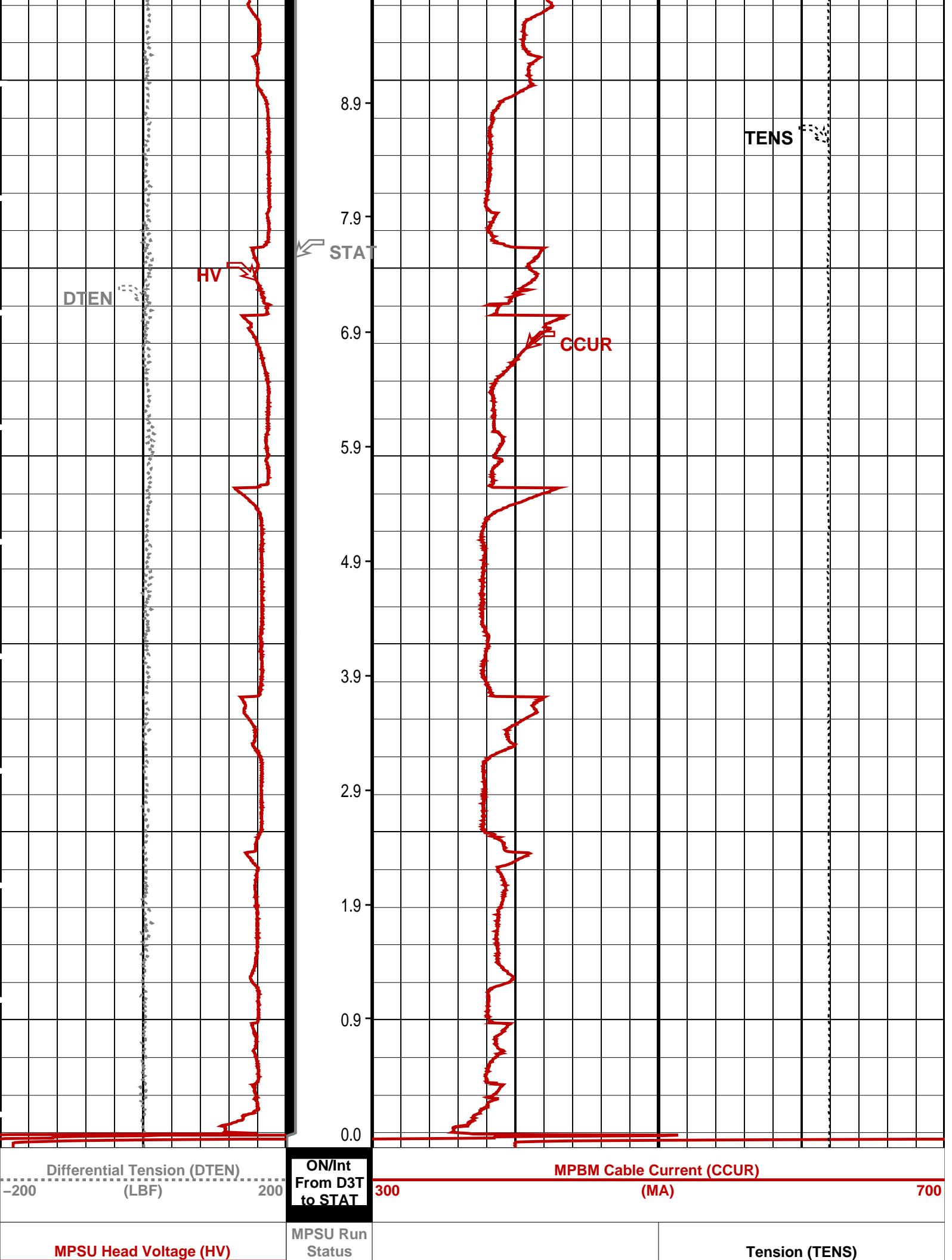
⊖ MPSU Run Time Every 1 MN

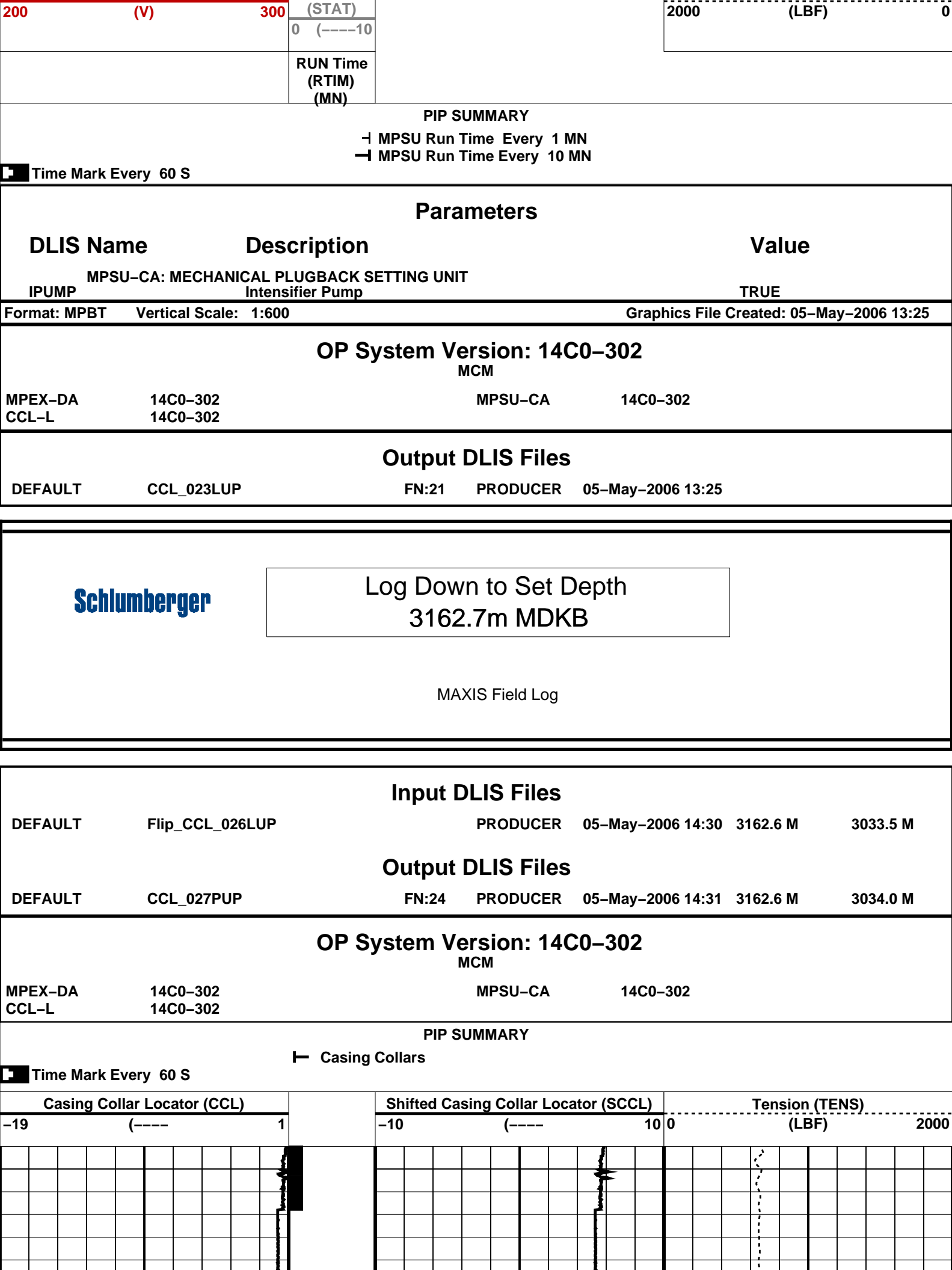
⊖ MPSU Run Time Every 10 MN

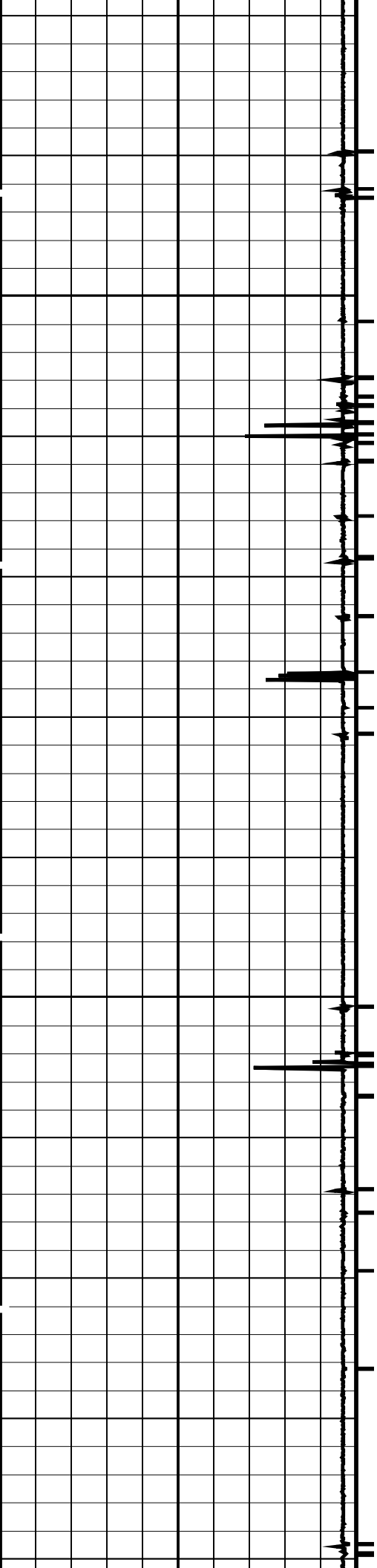
☒ Time Mark Every 60 S





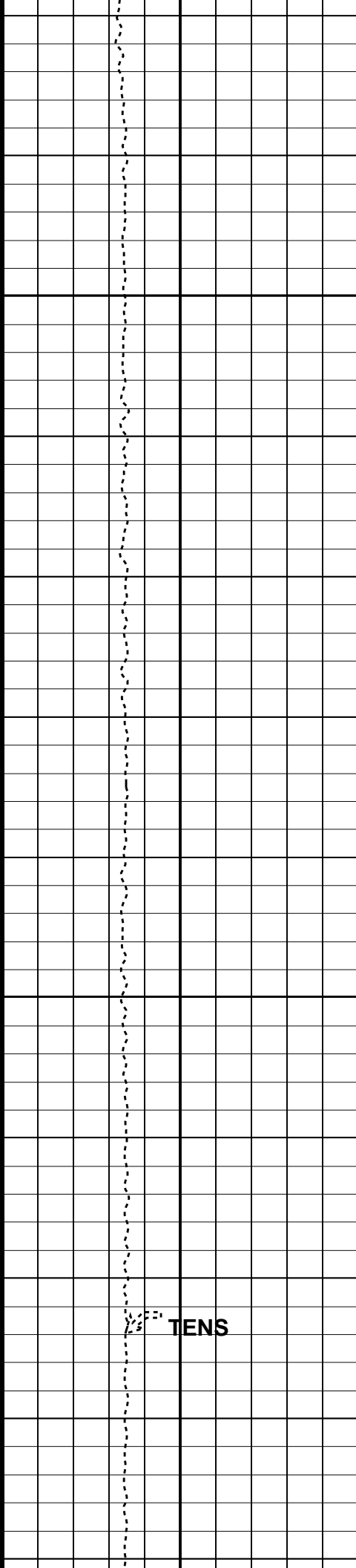
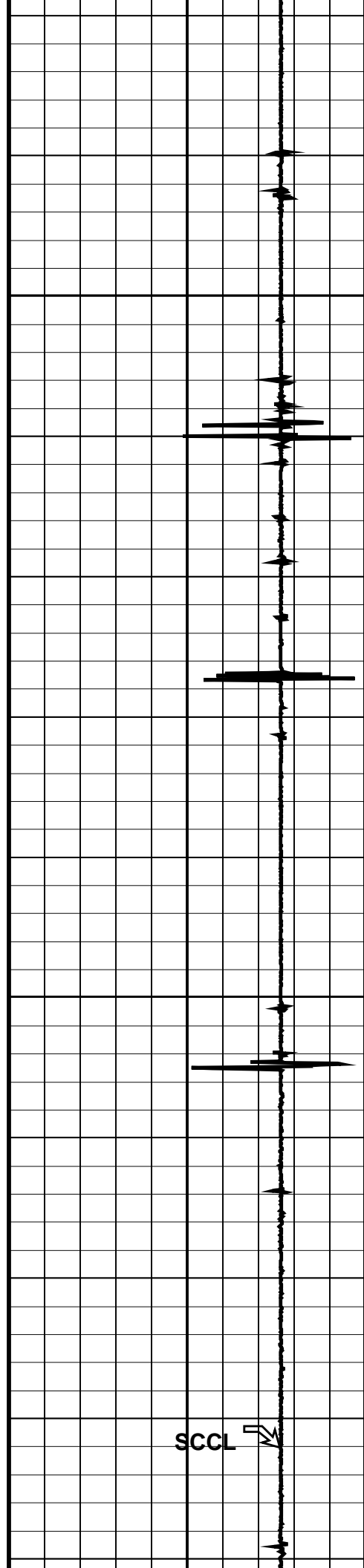






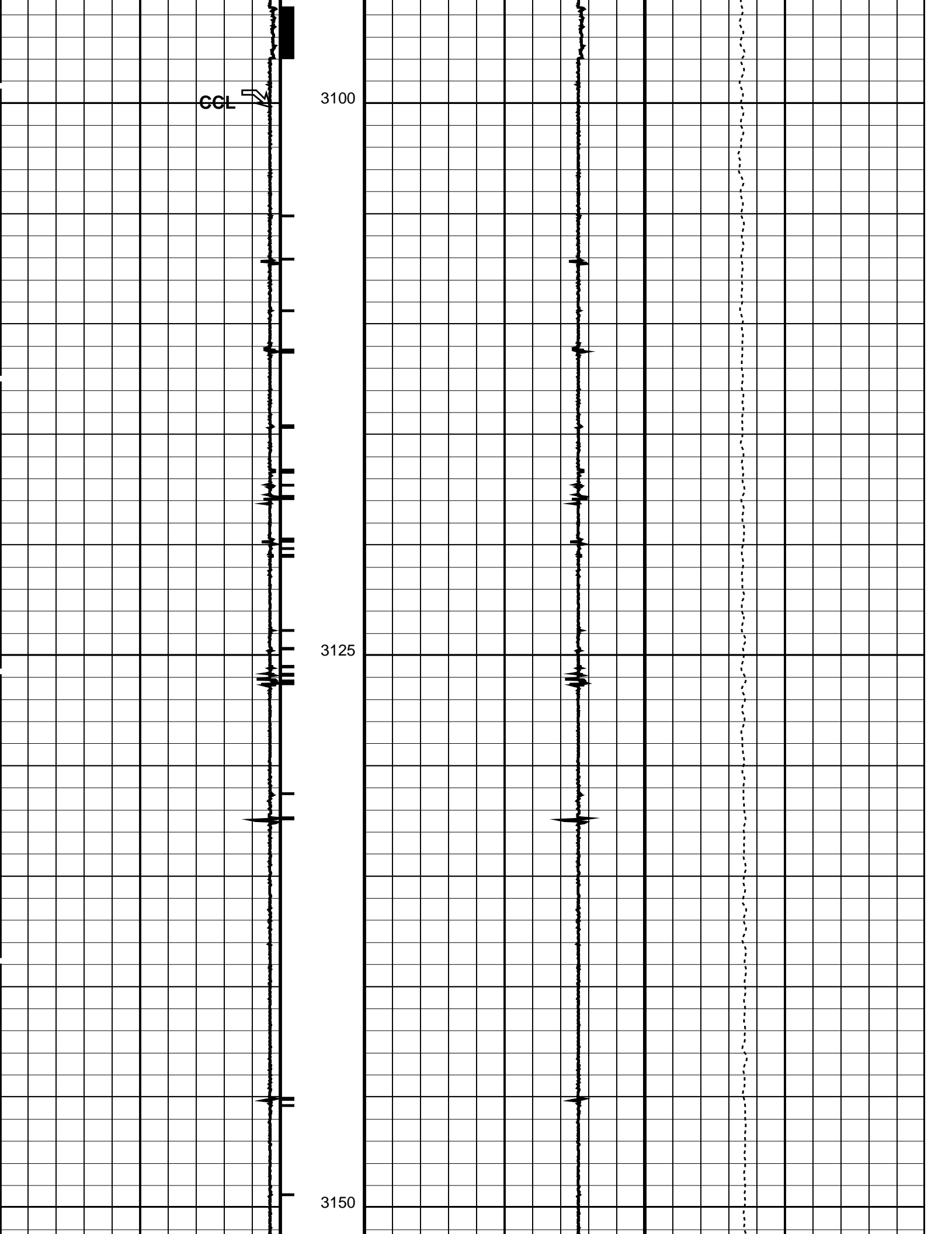
3050

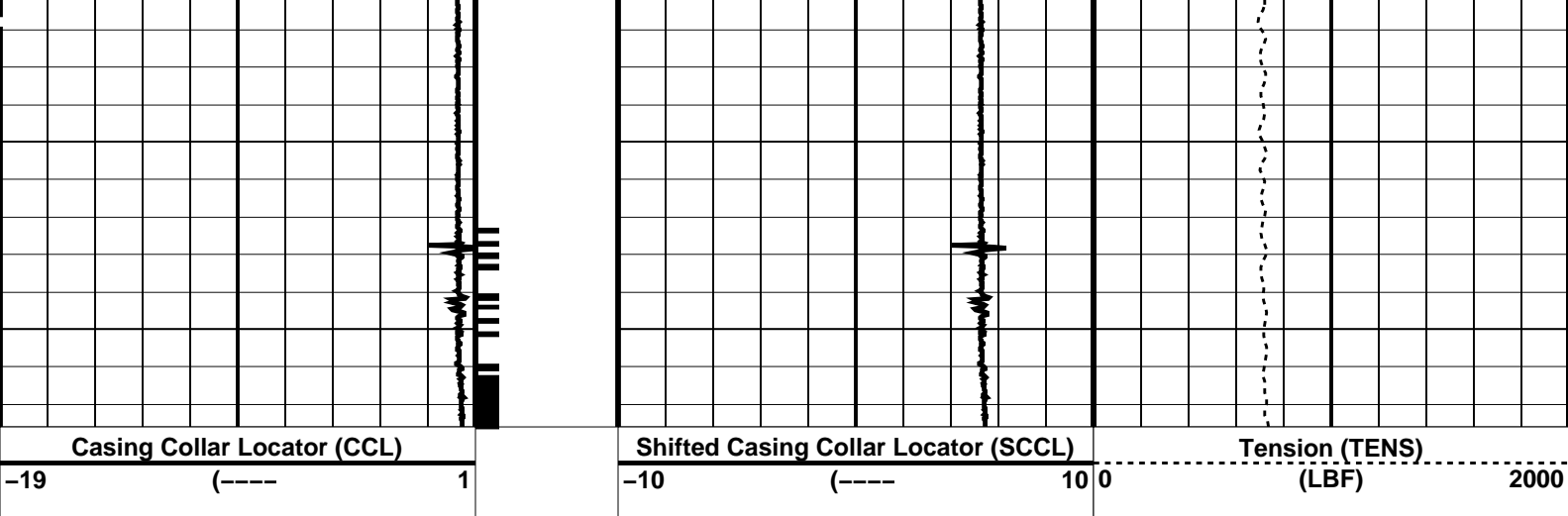
3075



SCCL

TENS





PIP SUMMARY

Time Mark Every 60 S

Parameters		
DLIS Name	Description	Value
CCLD	CCL-L: Casing Collar Locator	12 IN
CCLT	CCL reset delay	0.3 V
	CCL Detection Level	
DO	System and Miscellaneous	0.0 M
PP	Depth Offset for Playback	
	Playback Processing	NORMAL

Format: PERFO Vertical Scale: 1:200 Graphics File Created: 05-May-2006 14:31

OP System Version: 14C0-302			
MCM			
MPEX-DA	14C0-302	MPSU-CA	14C0-302
CCL-L	14C0-302		

Input DLIS Files					
DEFAULT	Flip_CCL_026LUP	PRODUCER	05-May-2006 14:30	3162.6 M	3033.5 M
Output DLIS Files					
DEFAULT	CCL_027PUP	FN:24	PRODUCER	05-May-2006 14:31	

7" Dummy Plug Pass

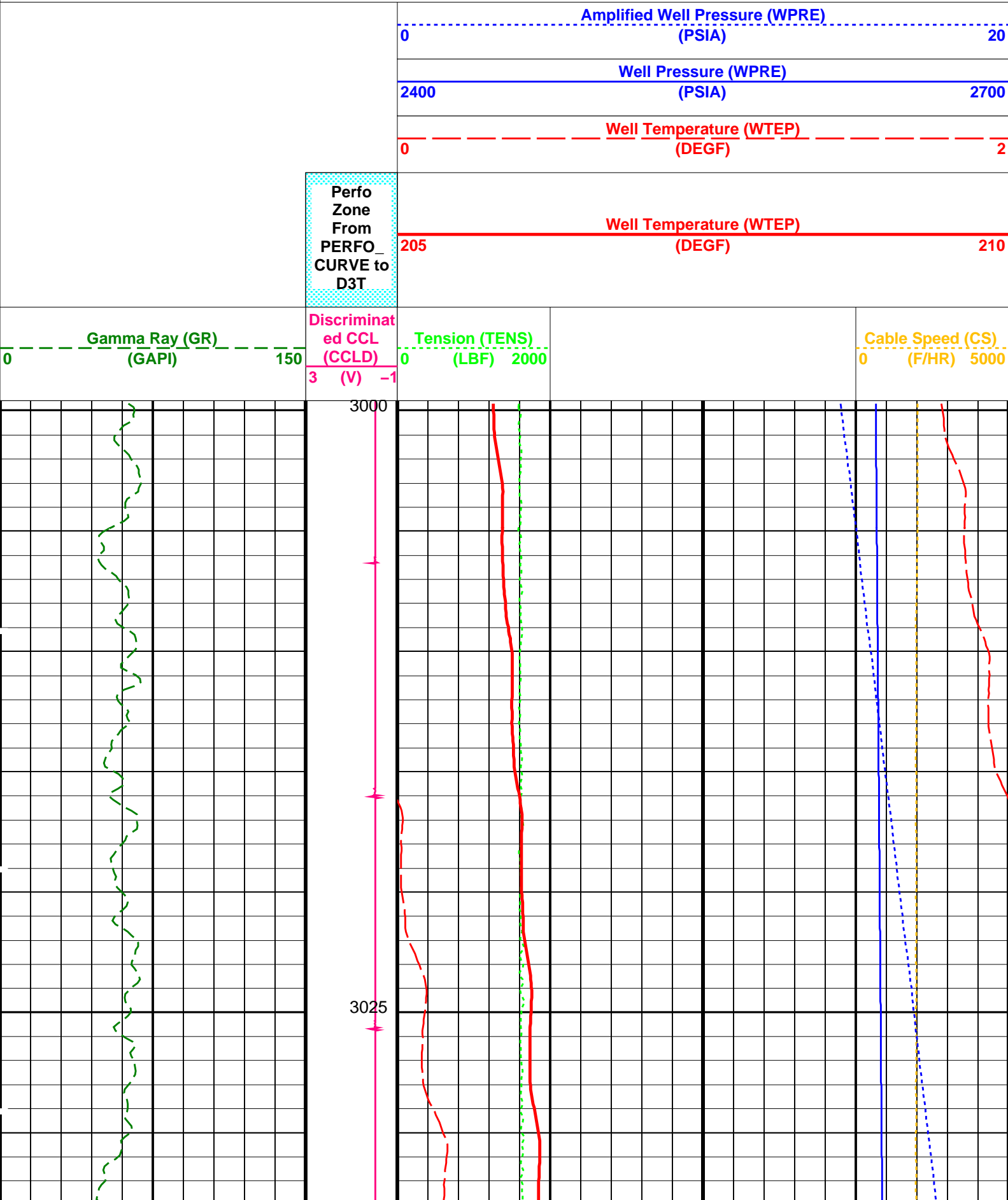
MAXIS Field Log

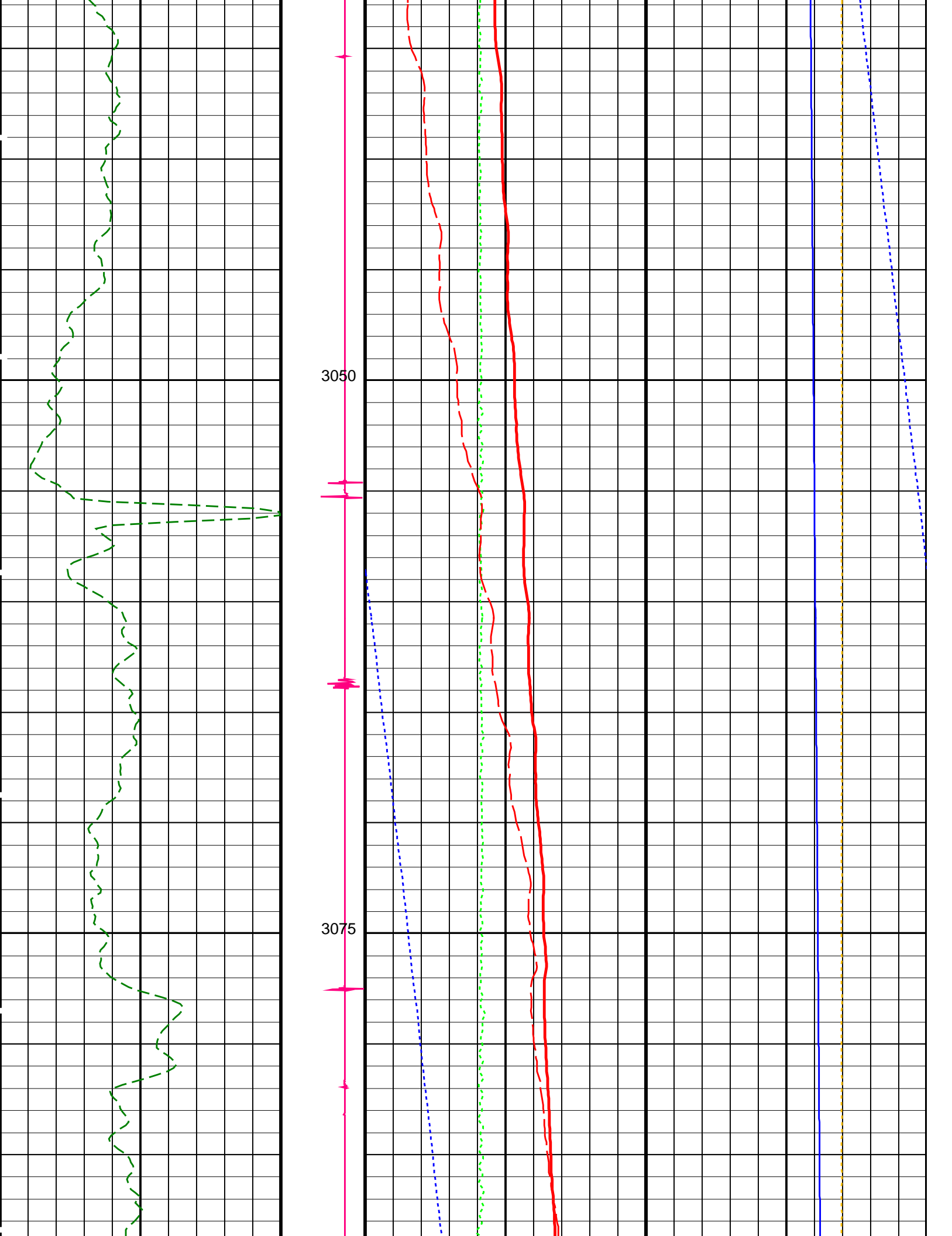
Company: Esso Australia Ltd. Well: A-23a

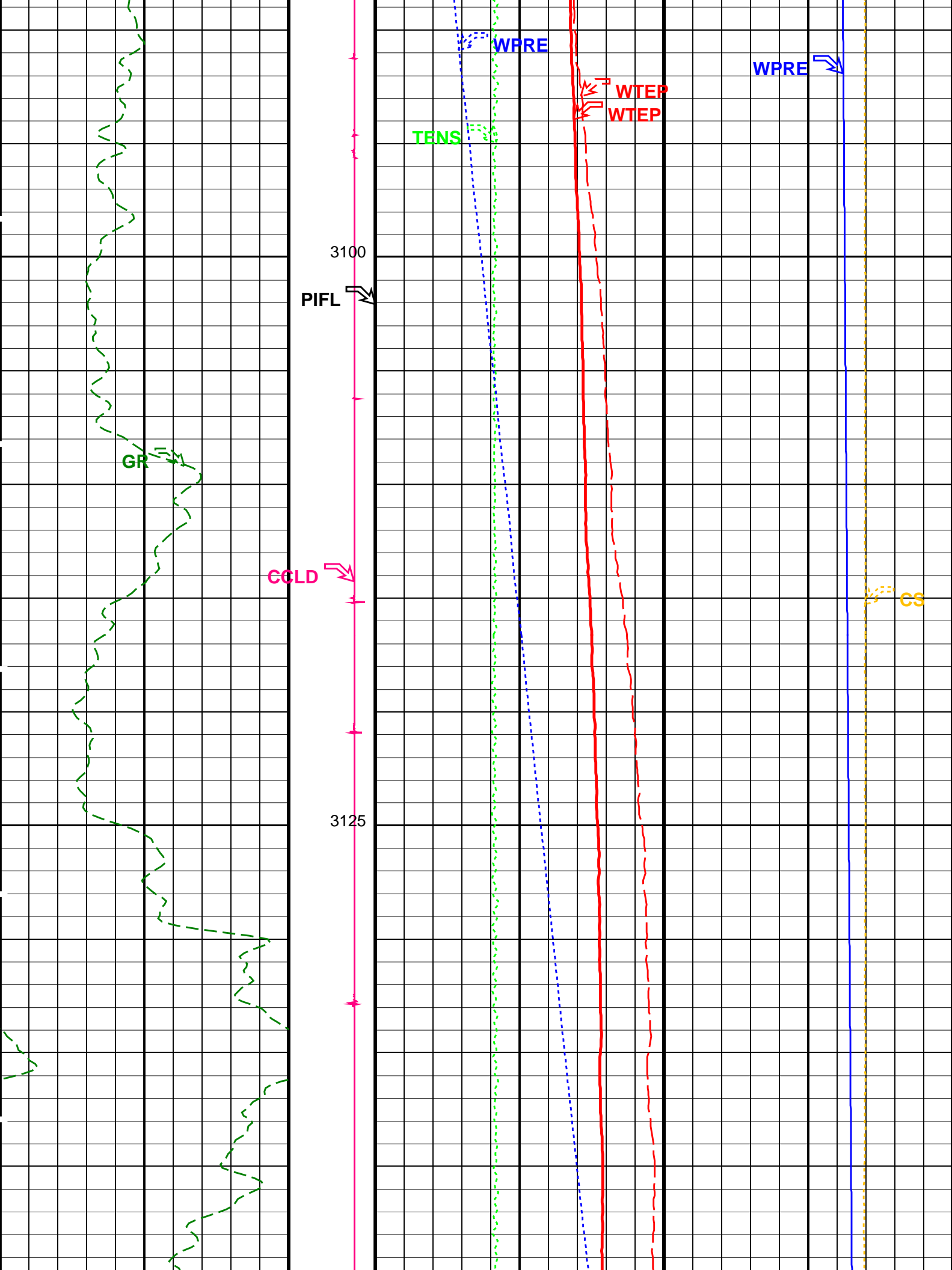
Input DLIS Files					
DEFAULT	PSP_016LUP	FN:14	PRODUCER	05-May-2006 08:38	3181.3 M 2996.2 M
Output DLIS Files					
DEFAULT	PSP_018PUP	FN:16	PRODUCER	05-May-2006 09:36	3184.2 M 2999.5 M

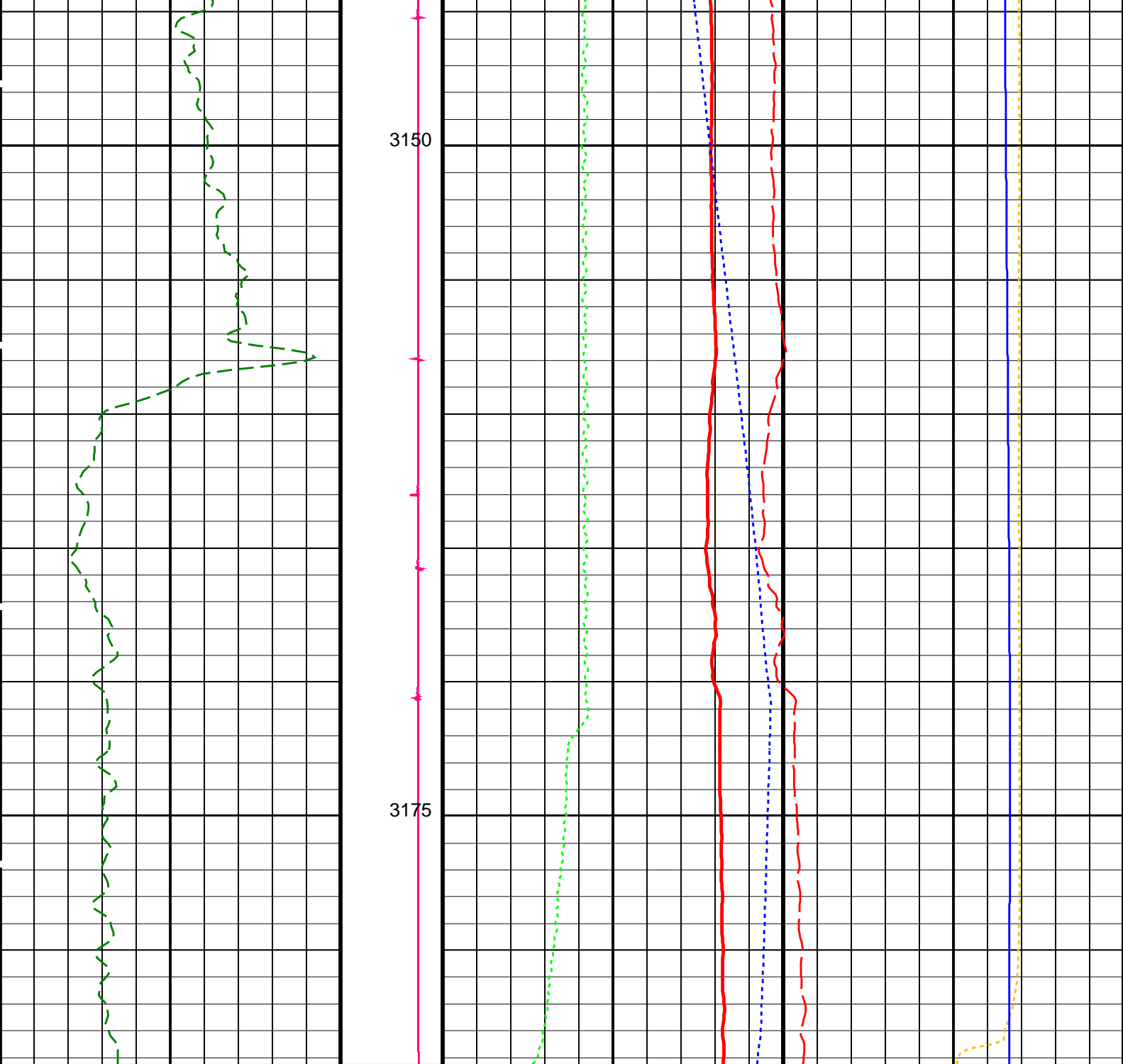
PIP SUMMARY

Time Mark Every 60 S









Gamma Ray (GR) (GAPI)	Discriminat ed CCL (CCLD) (V)	Tension (TENS) (LBF)	Cable Speed (CS) (F/HR)
0 150	3 -1	0 2000	0 5000

Perfo Zone From PERFO_ CURVE to D3T	Well Temperature (WTEP)		
	205	(DEGF)	210
	Well Temperature (WTEP)		
	0	(DEGF)	2
	Well Pressure (WPRE)		
	2400	(PSIA)	2700
	Amplified Well Pressure (WPRE)		
	0	(PSIA)	20

PIP SUMMARY

Time Mark Every 60 S

Format: PSP_1 Vertical Scale: 1:200

Graphics File Created: 05-May-2006 09:36

OP System Version: 14C0-302

MCM

PSPT-A/B

14C0-302

Parameters

DLIS Name	Description	Value
DO	System and Miscellaneous	2.9 M
PP	Depth Offset for Playback Playback Processing	NORMAL

Input DLIS Files

DEFAULT	PSP_016LUP	FN:14	PRODUCER	05-May-2006 08:38	3181.3 M	2996.2 M
---------	------------	-------	----------	-------------------	----------	----------

Output DLIS Files

DEFAULT	PSP_018PUP	FN:16	PRODUCER	05-May-2006 09:36
---------	------------	-------	----------	-------------------

Company: **Esso Australia Ltd.**

Schlumberger

Well: **A-23a**

Field: **Bream A**

Rig : **Prod4 / Crane**

Country: **Australia**

PSP Dummy Plug

7" Posiset Plug

Dump Bailer Record