

Company: Esso Australia Ltd.

Well: A-16
Field: Bream A
Rig : Prod4

Country: Australia

5 1/2" PSP Plug 2 7/8" HSD Perforation		LOCATION	
		Gippsland	Elev.: K.B. 33.5 m
		Basin	G.L. -59 m
		Bass Strait	D.F. 33.5 m
		Permanent Datum: _____	M.S.L. _____
Log Measured From: _____	D.F. _____	33.5 m	above Perm. Datum
Drilling Measured From: _____	D.F. _____		
State: Victoria	Max. Well Deviation 92 deg	Longitude 147 46'15.562"E	Latitude 038 30'4.432"S
Logging Date	11-May-2006		
Run Number	3 thru 5		
Depth Driller	2835 m		
Schlumberger Depth	2800 m		
Bottom Log Interval	2800 m		
Top Log Interval	2575 m		
Casing Fluid Type	Production Fluids		
Salinity			
Density			
Fluid Level			
BIT/CASING/TUBING STRING			
Bit Size	7.000 in		
From			
To			
Casing/Tubing Size	5.500 in		
Weight	17 lbm/ft		
Grade	N-80		
From	2422.5 m		
To	3496.99 m		
Maximum Recorded Temperatures	208 degf		
Logger On Bottom	11-May-2006		13:30
Unit Number	LEE001	Prod4	
Recorded By	G Wright & P Tarrant		
Witnessed By	B White & B Robinson		

				Run 1
PVT DATA				
Oil Density				
Water Salinity				
Gas Gravity				
Bo				
Bw				
1/Bg				
Bubble Point Pressure				
Bubble Point Temperature				
Solution GOR				
Maximum Deviation				92 deg
CEMENTING DATA				
Primary/Squeeze				Primary
Casing String No				
Lead Cement Type				
Volume				
Density				
Water Loss				
Additives				
Tail Cement Type				
Volume				
Density				
Water Loss				
Additives				
Expected Cement Top				
Logging Date				
Run Number				
Depth Driller				
Schlumberger Depth				
Bottom Log Interval				
Top Log Interval				
Casing Fluid Type				
Salinity				
Density				
Fluid Level				
BIT/CASING/TUBING STRING				
Bit Size				
From				
To				
Casing/Tubing Size				
Weight				
Grade				
From				
To				
Maximum Recorded Temperatures				
Logger On Bottom				
Unit Number				
Recorded By				
Witnessed By				

DEPTH SUMMARY LISTING

Depth Control Parameters	
Log Sequence:	Subsequent Trip To the Well
Reference Log Name:	Solar Log
Reference Log Run Number:	Unknown
Reference Log Date:	Unknown
Subsequent Trip Down Log Correction:	

DISCLAIMER

THE USE OF AND RELIANCE UPON THIS RECORDED-DATA BY THE HEREIN NAMED COMPANY (AND ANY OF ITS AFFILIATES, PARTNERS, REPRESENTATIVES, AGENTS, CONSULTANTS AND EMPLOYEES) IS SUBJECT TO THE TERMS AND CONDITIONS AGREED UPON BETWEEN SCHLUMBERGER AND THE COMPANY, INCLUDING: (a) RESTRICTIONS ON USE OF THE RECORDED-DATA; (b) DISCLAIMERS AND WAIVERS OF WARRANTIES AND REPRESENTATIONS REGARDING COMPANY'S USE OF AND RELIANCE UPON THE RECORDED-DATA; AND (c) CUSTOMER'S FULL AND SOLE RESPONSIBILITY FOR ANY INFERENCE DRAWN OR DECISION MADE IN CONNECTION WITH THE USE OF THIS RECORDED-DATA.

REMARKS: RUN NUMBER 1
Log correlated to ExxonMobil correlation composite dated 15-Jan-2005.
Maximum well deviation = 92 degrees at 3398m MDKB.
Run 2 was a Precision GR pass,no data was logged due to surface equipment problems.
Run three,PSP plug set at 2773m MDKB.
Runs 4 & 5,2 7/8" Powerjet Omega HSD perforations.
Run 4 interval was 2738.5m to 2744.5m MDKB.

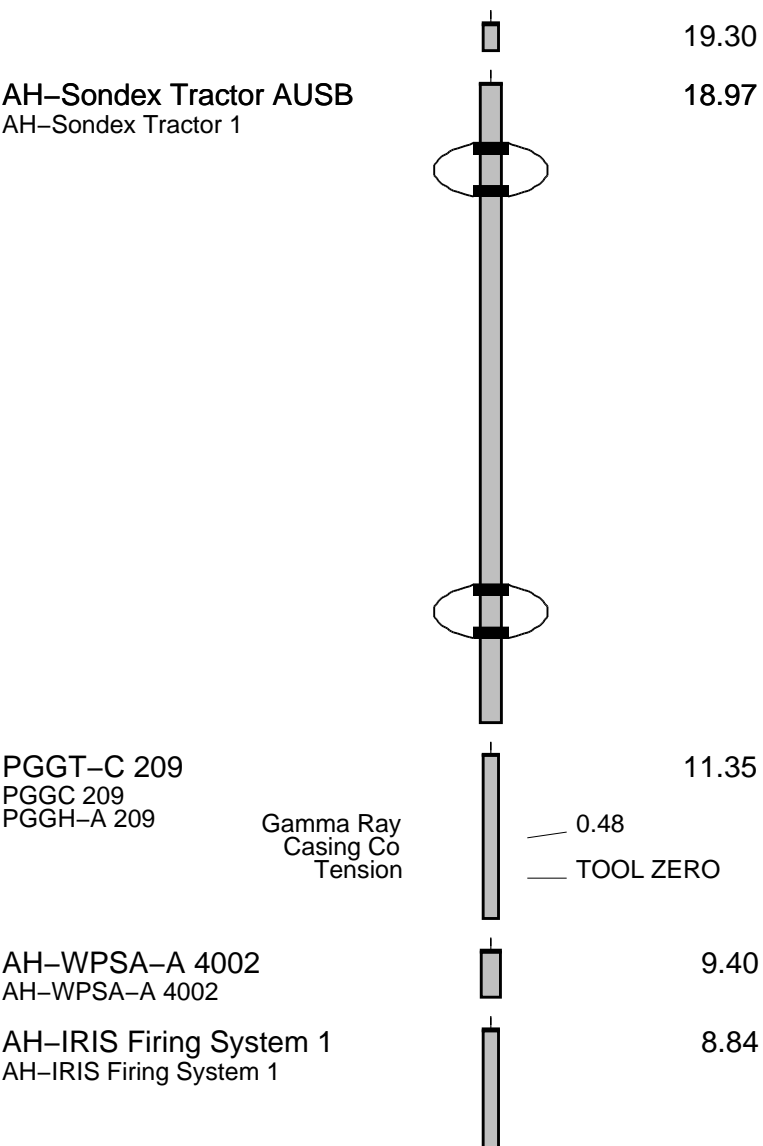
Crew :
Jakob Annear & Andy Hall (days)
Rick Murray & Gary Martin (nights)

RUN 1 SERVICE ORDER #: AUSL06103816 PROGRAM VERSION: 14C0-302 FLUID LEVEL:			
LOGGED INTERVAL	START	STOP	

RUN 1

SURFACE EQUIPMENT

DOWNHOLE EQUIPMENT

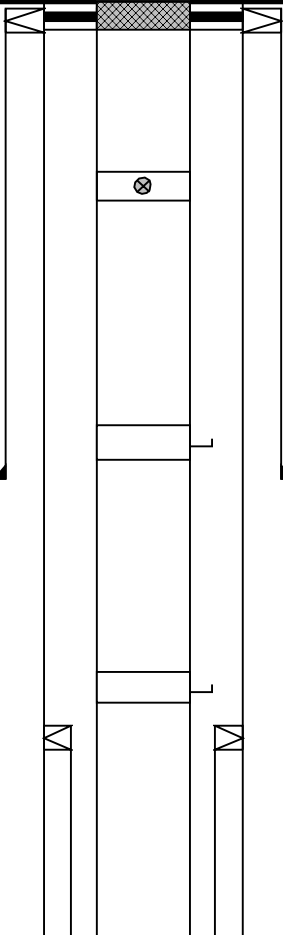


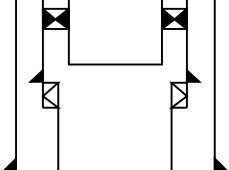







AH-2 7/8" HSD 1
AH-2 7/8" HSD 1

6.30

TOOL BOTTOM

MAXIMUM STRING DIAMETER 4.50 IN
MEASUREMENTS RELATIVE TO TOOL ZERO
ALL LENGTHS IN METERS

Production String	(in)		(m)	Well Schematic	(m)	(in)		Casing String
	OD	ID	MD		MD	OD	ID	
Tubing	9.625	4.500	11.0		12.7 12.7	9.625 13.375	9.625	Casing String Liner Hanger
Shutin Valve	4.500		442.0					
Gas Lift Mandrel	4.500		706.0		977.6	13.375		Casing Shoe
Gas Lift Mandrel	4.500		1473.0		1485.7 1485.7	7.000 9.625	7.000	Casing String Liner Hanger

Packer	7.000	4.500	2366.0		2419.8	7.000	Casing Shoe
					2422.5	5.500	Casing String
					2422.5	7.000	Liner Hanger
					2600.0	9.625	Casing Shoe
Bridge Plug, PSP Plug	5.500	0.000	2773.0		2738.5		Perforation Zone
Bridge Plug	5.500	0.000	2835.0		2779.5		Perforation Zone
					3004.0		Perforation Zone
					3135.0		Perforation Zone
					3340.0		Perforation Zone
					3360.0		Perforation Zone
					3497.0	5.500	Casing Shoe

DEPTH SUMMARY LISTING

Depth System Equipment				Date Created: 10-MAY-2006 0:39:49	
Depth Measuring Device		Tension Device		Logging Cable	
Type:	IDW-H	Type:	CMTD-B/A	Type:	2-23ZT
Serial Number:	797	Serial Number:	1037	Serial Number:	22372
Calibration Date:	01 May 2005	Calibration Date:	01 Apr 2006	Length:	5049.93 M
Calibrator Serial Number:	1009	Calibrator Serial Number:	1174	Conveyance Method: Wireline Rig Type: Offshore_Fixed	
Calibration Cable Type:	2-32ZT	Calibration Gain:	1.37		
Wheel Correction 1:	-3	Calibration Offset:	635.00		
Wheel Correction 2:	-3				
Depth Control Parameters					
Log Sequence:		Subsequent Trip To the Well			
Reference Log Name:		Solar Log			
Reference Log Run Number:		Unknown			
Reference Log Date:		Unknown			
Subsequent Trip Down Log Correction:		-50000.00 M			
Depth Control Remarks					

- 2.
- 3.
- 4.
- 5.
- 6.



2 7/8" HSD

Run 2 – Correlation Pass

MAXIS Field Log

Output DLIS Files

DEFAULT

PERFO_063LUP

FN:57

PRODUCER

11-May-2006 21:58

2754.6 M

2703.3 M

OP System Version: 14C0-302

MCM

SHM_GUN

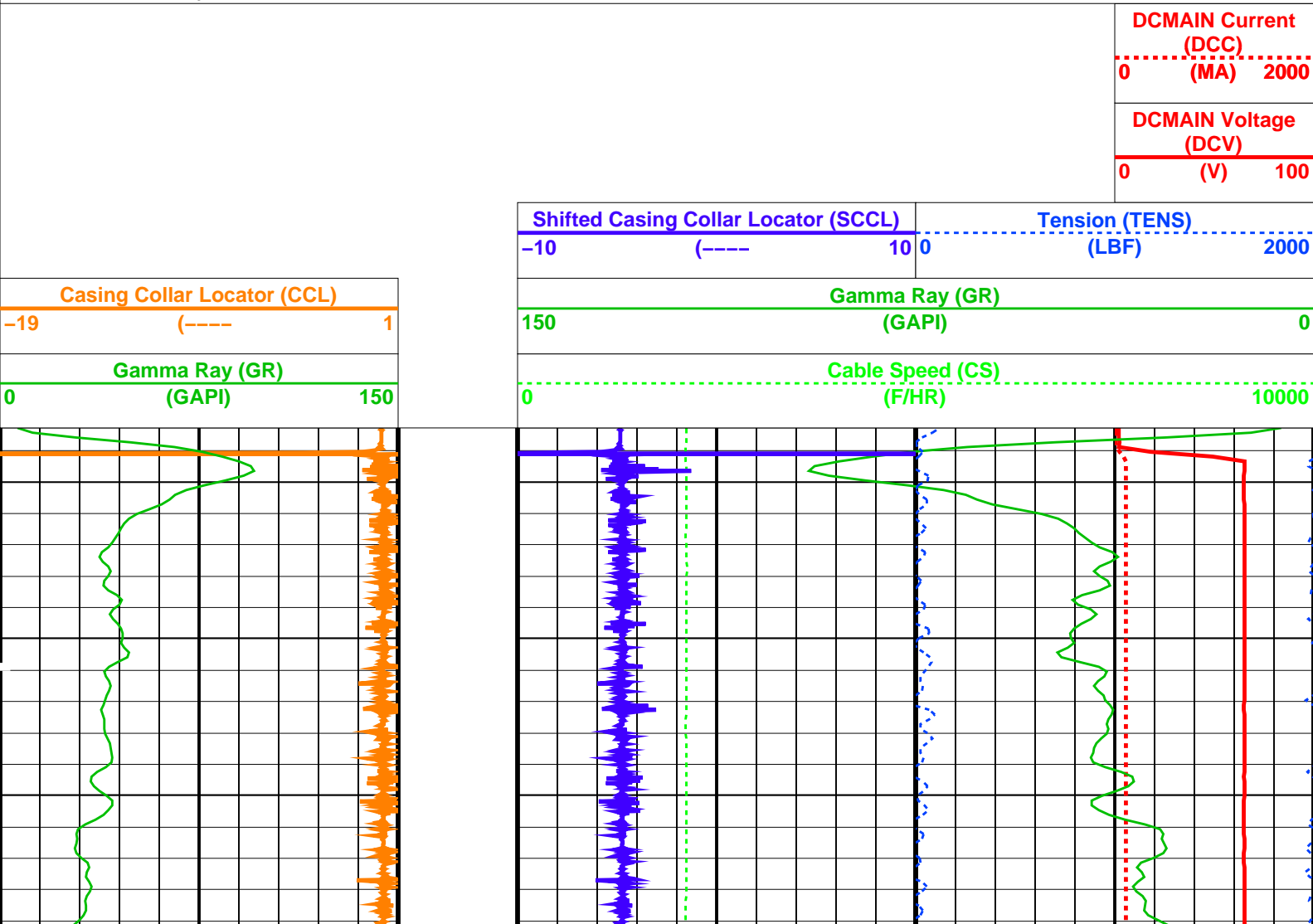
14C0-302

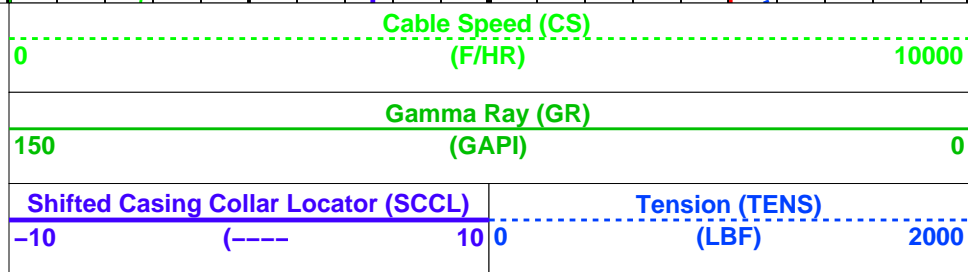
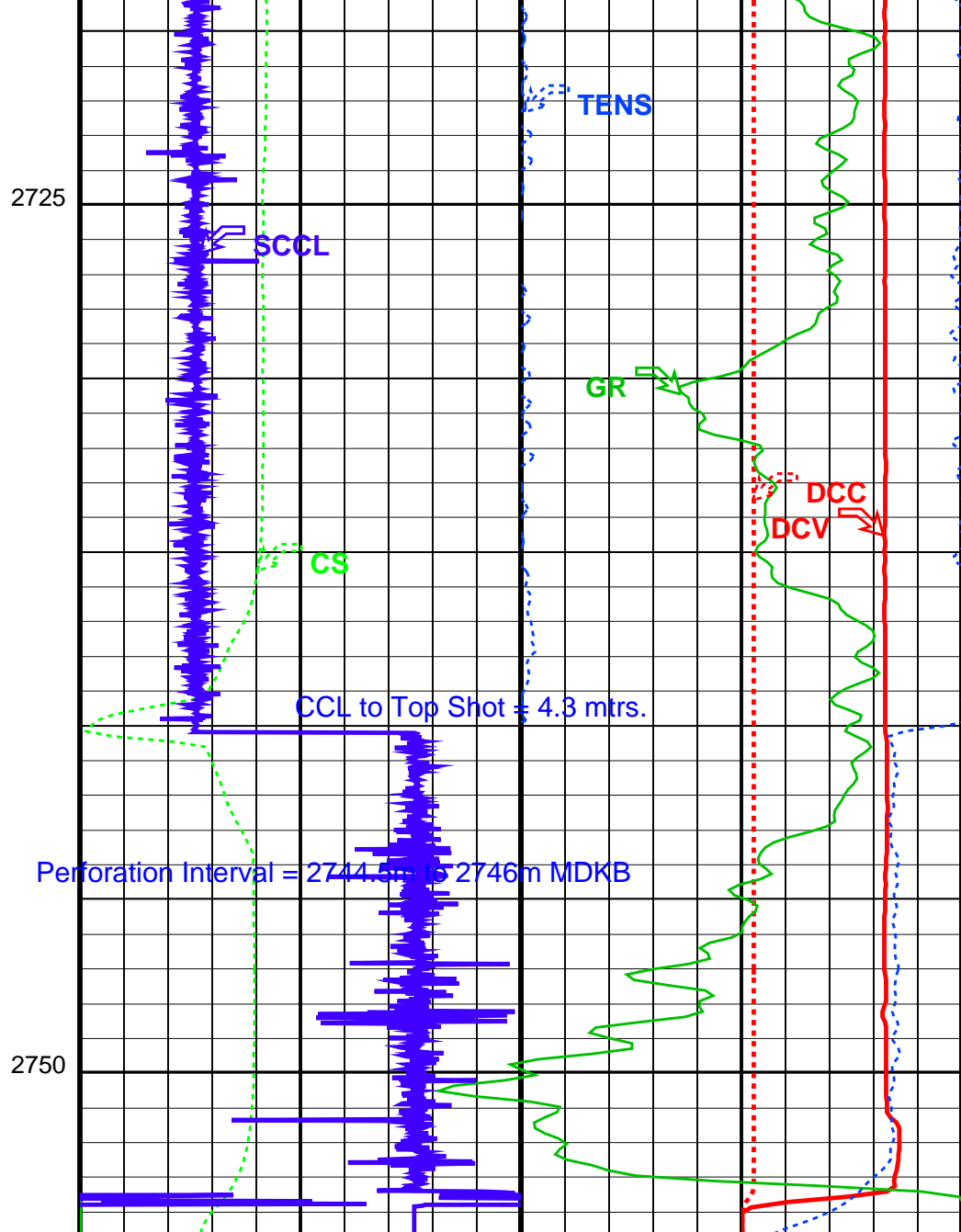
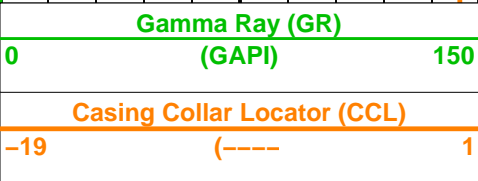
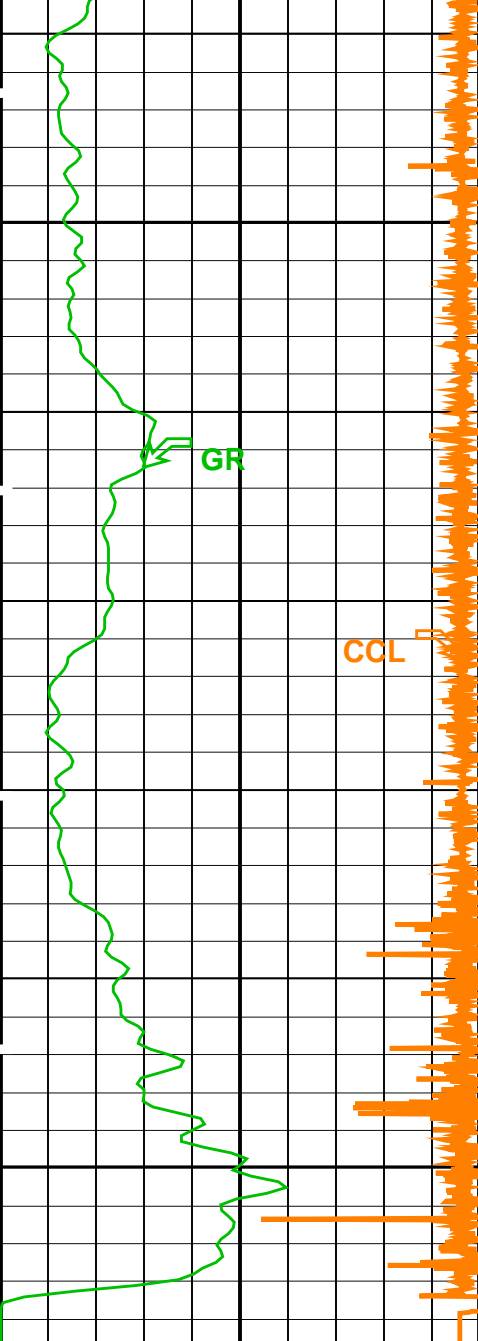
PGGT-CC

14C0-302

PIP SUMMARY

Time Mark Every 60 S





DCMAIN Voltage (DCV)		
0	(V)	100
DCMAIN Current (DCC)		
0	(MA)	2000

PIP SUMMARY

Time Mark Every 60 S

Format: PERFO Vertical Scale: 1:200

Graphics File Created: 11-May-2006 21:58

OP System Version: 14C0-302
MCM

Output DLIS Files

DEFAULT

PERFO_063LUP

FN:57

PRODUCER

11-May-2006 21:58

Schlumberger

2 7/8" HSD
Run 2 – Shooting Pass

MAXIS Field Log

Output DLIS Files

DEFAULT

PERFO_062LUP

FN:56

PRODUCER

11-May-2006 21:41

2749.9 M

2690.0 M

OP System Version: 14C0-302
MCM

SHM_GUN

14C0-302

PGGT-CC

14C0-302

PIP SUMMARY

Time Mark Every 60 S

DCMAIN Current
(DCC)
(MA) 2000

0

DCMAIN Voltage
(DCV)
(V) 100

0

Shifted Casing Collar Locator (SCCL)

-10

(----

10

Tension (TENS)

0

(LBF)

2000

Casing Collar Locator (CCL)

-19

(----

1

Gamma Ray (GR)

150

(GAPI)

0

Gamma Ray (GR)

0

(GAPI)

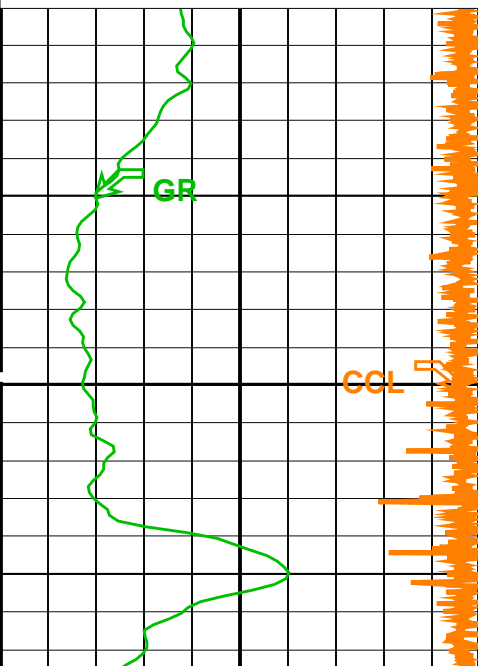
150

Cable Speed (CS)

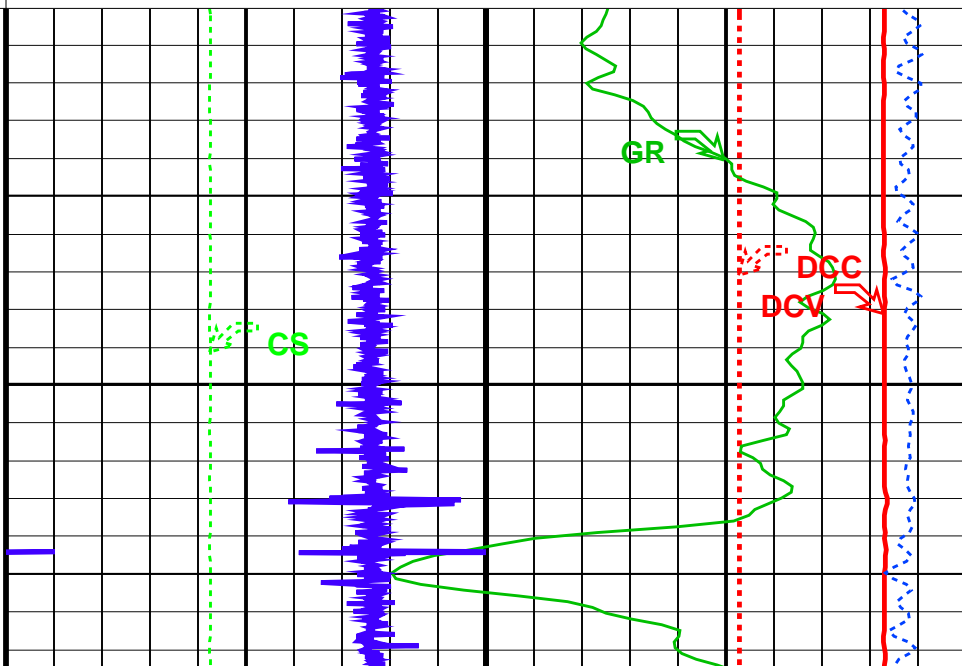
0

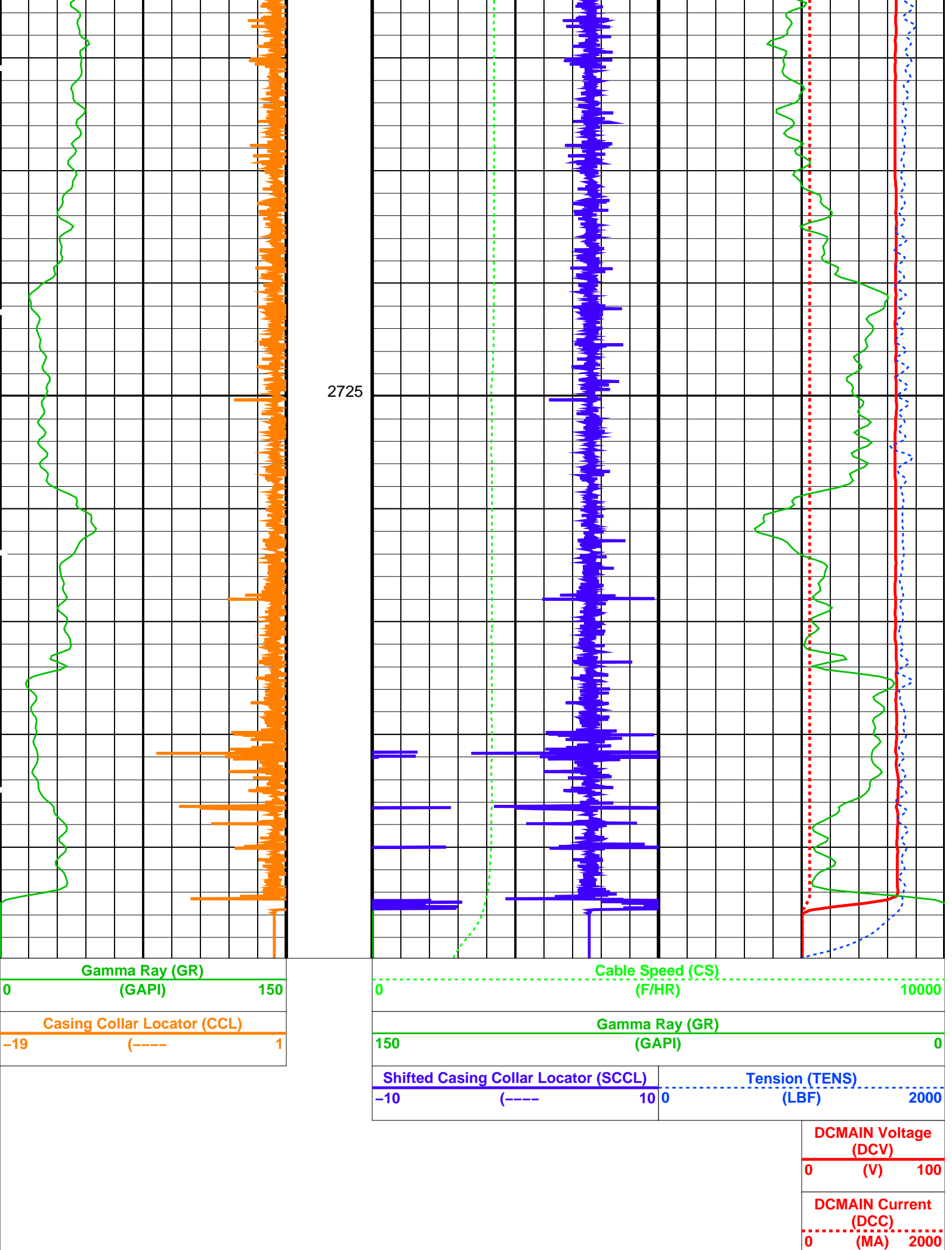
(F/HR)

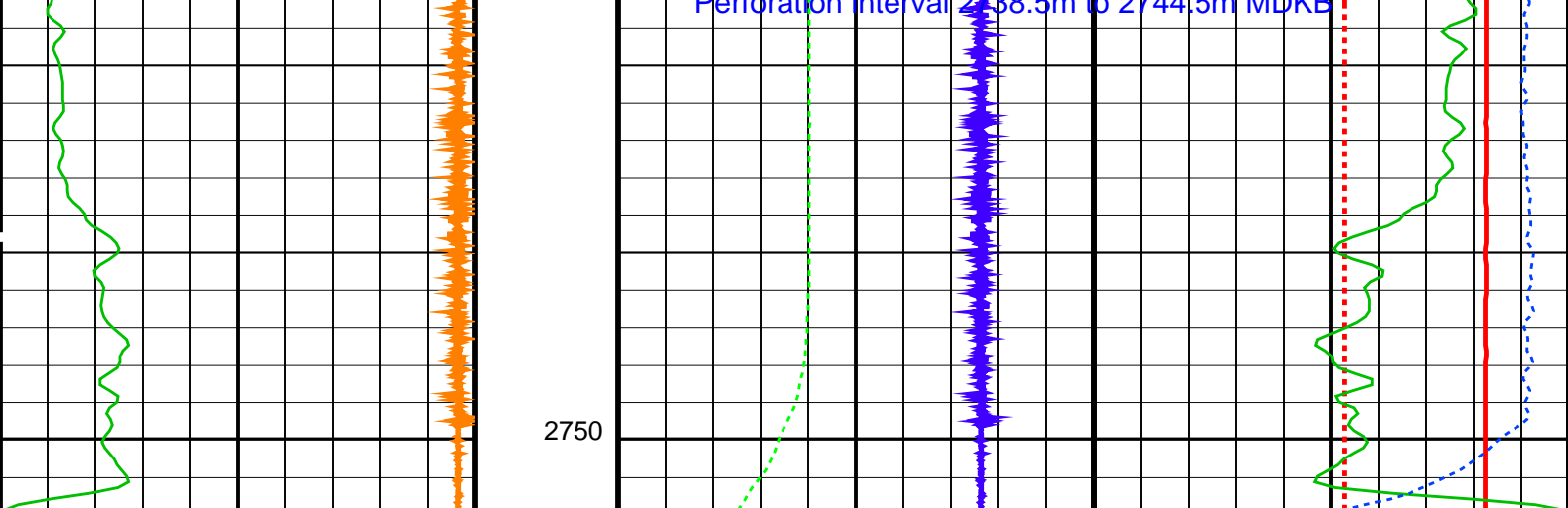
10000



2700







Gamma Ray (GR) (GAPI)		Cable Speed (CS) (F/HR)	
0	150	0	10000
Casing Collar Locator (CCL) (-----)		Gamma Ray (GR) (GAPI)	
-19	1	150	0
Shifted Casing Collar Locator (SCCL) (-----)		Tension (TENS) (LBF)	
-10	10	0	2000

DCMAIN Voltage (DCV)		
0	(V)	100
DCMAIN Current (DCC)		
0	(MA)	2000

PIP SUMMARY

Time Mark Every 60 S

Format: PERFO Vertical Scale: 1:200

Graphics File Created: 11-May-2006 18:12

OP System Version: 14C0-302

MCM

SHM_GUN 14C0-302 PGGT-CC 14C0-302

Output DLIS Files

DEFAULT PERFO_045LUP FN:39 PRODUCER 11-May-2006 18:12

Schlumberger

2 7/8" HSD
Run 1 - Correlation Pass

MAXIS Field Log

Output DLIS Files

DEFAULT PERFO_044LUP FN:38 PRODUCER 11-May-2006 17:50

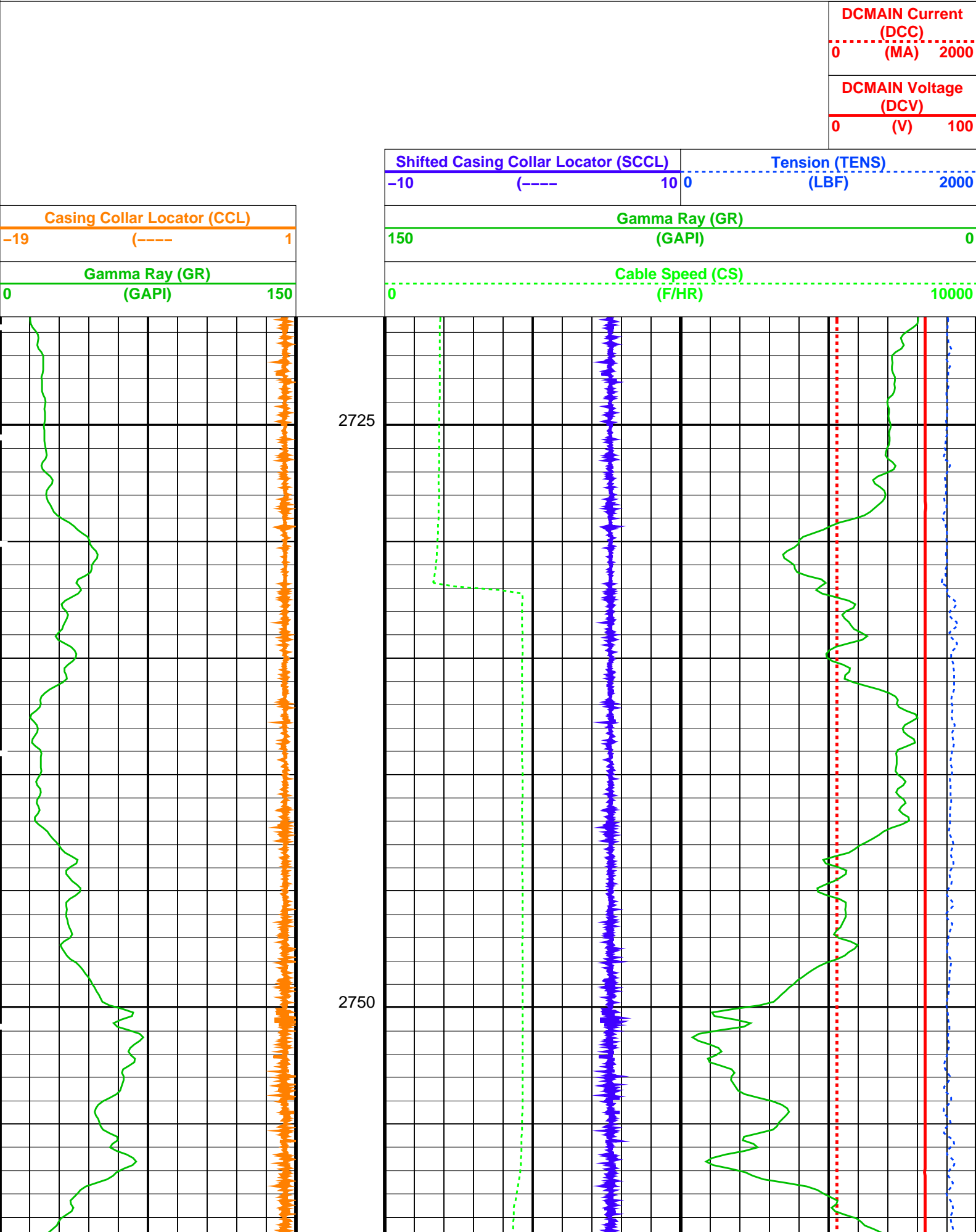
OP System Version: 14C0-302

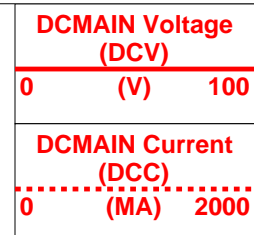
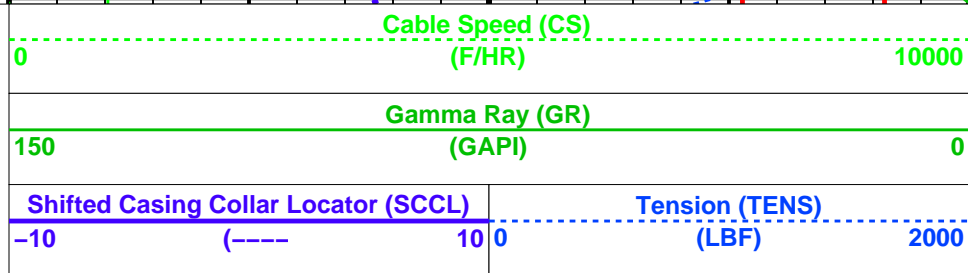
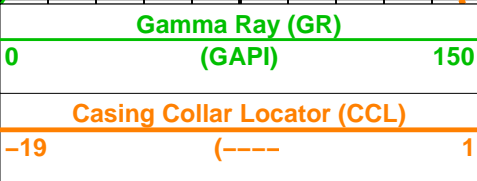
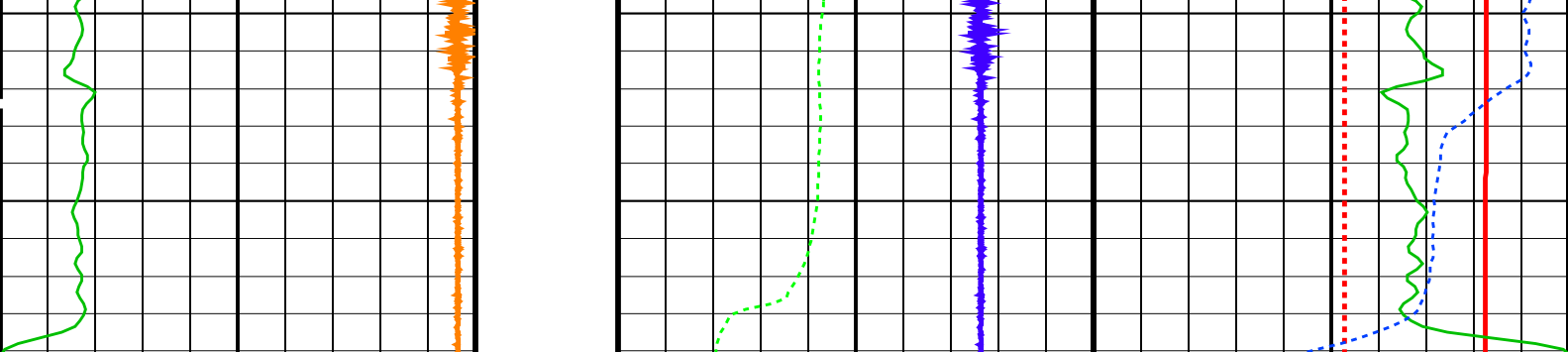
MCM

SHM_GUN 14C0-302 PGGT-CC 14C0-302

PIP SUMMARY

Time Mark Every 60 S





PIP SUMMARY

Time Mark Every 60 S

Format: PERFO Vertical Scale: 1:200

Graphics File Created: 11-May-2006 17:50

OP System Version: 14C0-302
MCM

SHM_GUN 14C0-302 PGGT-CC 14C0-302

Output DLIS Files

DEFAULT PERFO_044LUP FN:38 PRODUCER 11-May-2006 17:50

Schlumberger

PSP Plug Setting Pass
Set @ 2773m MDKB

MAXIS Field Log

Input DLIS Files

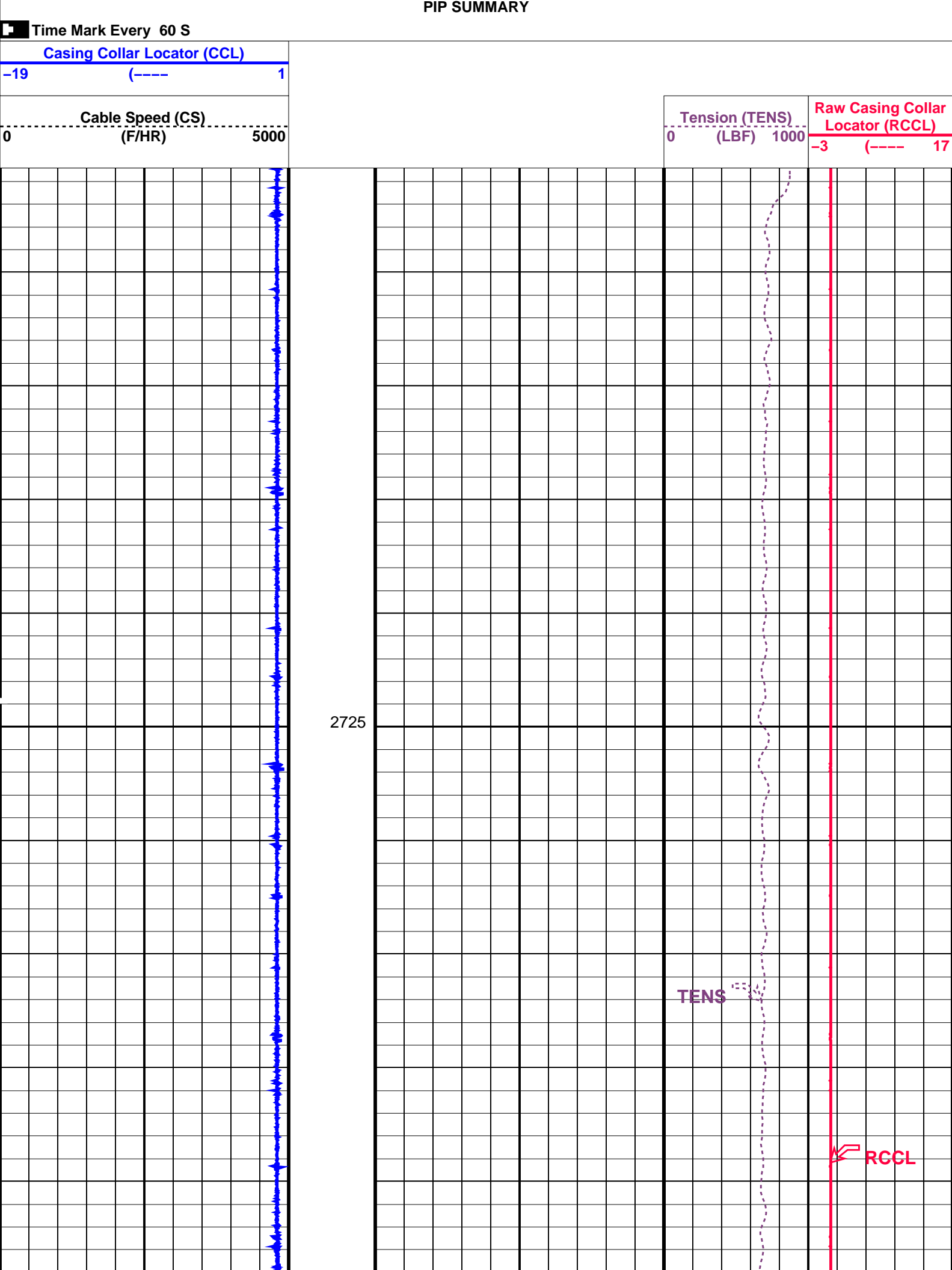
DEFAULT PERFO_036LUP FN:30 PRODUCER 11-May-2006 13:41 2783.6 M -9.8 M

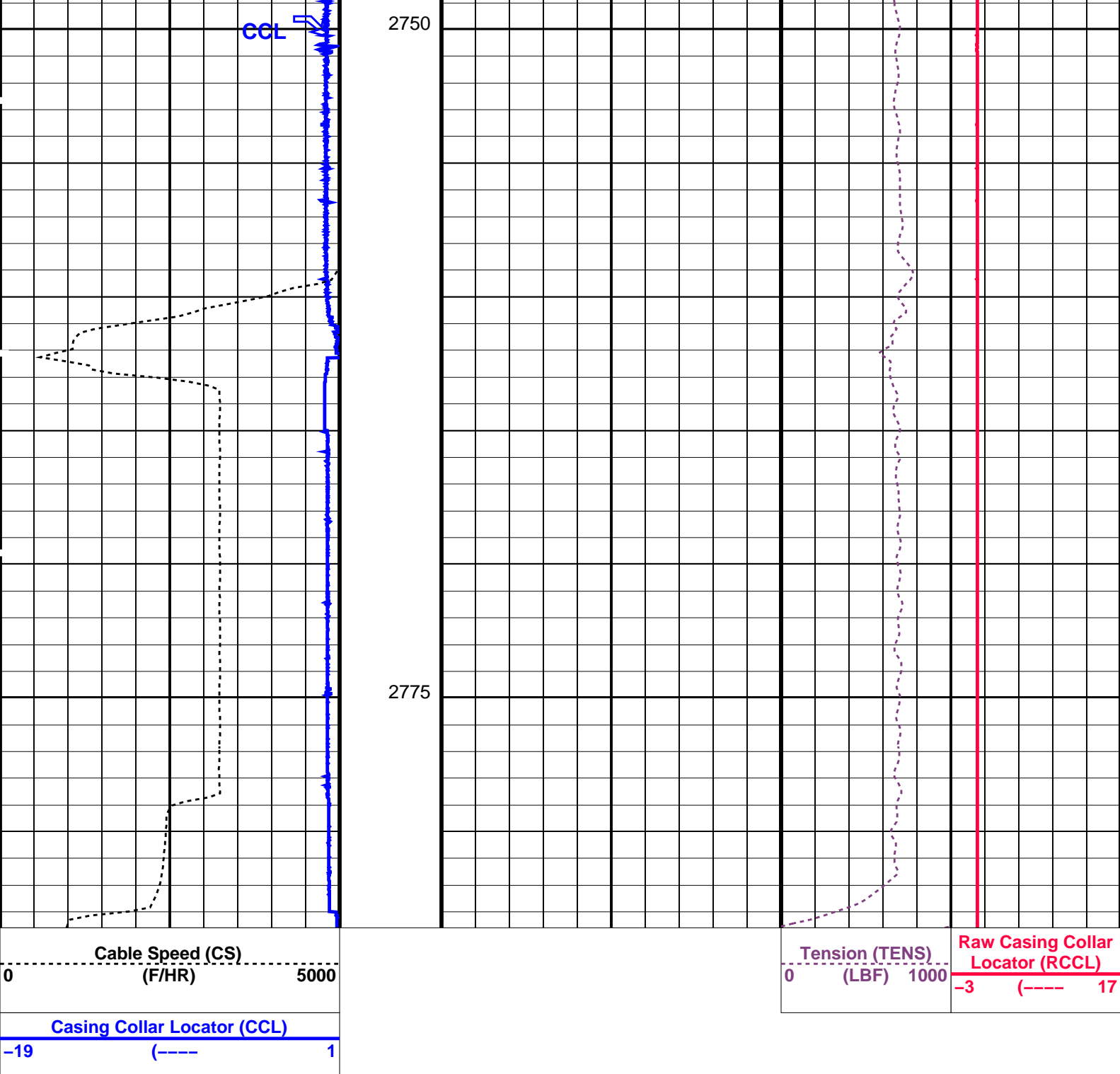
Output DLIS Files

DEFAULT GR_067PUP FN:61 PRODUCER 12-May-2006 13:59 2783.6 M 2700.4 M

OP System Version: 14C0-302
MCM

PGGT-C 14C0-302





PIP SUMMARY

Time Mark Every 60 S

Parameters

DLIS Name	Description	Value
DO	System and Miscellaneous	
PP	Depth Offset for Playback	0.0 M
	Playback Processing	NORMAL

Format: PERFO Vertical Scale: 1:200 Graphics File Created: 12-May-2006 13:59

OP System Version: 14C0-302
MCM

PGGT-C 14C0-302

Input DLIS Files

DEFAULT PERFO 036LUP FN:30 PRODUCER 11-May-2006 13:41 2783.6 M -9.8 M

Output DLIS Files

DEFAULT

GR_067PUP

FN:61

PRODUCER

12-May-2006 13:59

Company: **Esso Australia Ltd.**

Schlumberger

Well: **A-16**

Field: **Bream A**

Rig : **Prod4**

Country: **Australia**

5 1/2" PSP Plug

2 7/8" HSD

Perforation