

																				Rig:	Prod4/Crane	
--	--	--	--	--	--	--	--	--	--	--	--	--	--	--	--	--	--	--	--	------	-------------	--

Company: Esso Australia Ltd

Well: A-25

Field: Bream A

Rig: Prod4/Crane

Country: Australia

PSP / PLT
Spinner Survey

Field: Bream A
Location: Gippsland
Well: A-25
Company: Esso Australia Ltd

LOCATION	
Gippsland	Elev.: K.B. 33.5 m
Basin	G.L. -59 m
Bass Strait	D.F. 33.5 m
Permanent Datum:	M.S.L.
Log Measured From:	K.B.
Drilling Measured From:	K.B.
State: Victoria	Max. Well Deviation 70 deg
	Longitude 147 46'20.4071"E
	Latitude 38 29'58.9208"S

Logging Date	7-May-2006
Run Number	One
Depth Driller	4012 m
Schlumberger Depth	4012 m
Bottom Log Interval	4012 m
Top Log Interval	3950 m
Casing Fluid Type	Production Fluids
Salinity	
Density	
Fluid Level	520 m
BIT/CASING/TUBING STRING	
Bit Size	9.875 in
From	
To	
Casing/Tubing Size	7.000 in
Weight	34 lbm/ft
Grade	Buttress
From	13 m
To	4114.2 m
Maximum Recorded Temperatures	209 degf
Logger On Bottom	7-May-2006
Unit Number	LEE001
Recorded By	G. Wright & P. Tarrant
Witnessed By	B White & B Robinson

PVT DATA		Run 1
Oil Density		
Water Salinity		
Gas Gravity		
Bo		
Bw		
1/Bg		
Bubble Point Pressure		
Bubble Point Temperature		
Solution GOR		
Maximum Deviation	70 deg	
CEMENTING DATA		
Primary/Squeeze	Primary	
Casing String No		
Lead Cement Type		
Volume		
Density		
Water Loss		
Additives		
Tail Cement Type		
Volume		
Density		
Water Loss		
Additives		
Expected Cement Top		
Logging Date		
Run Number		
Depth Driller		
Schlumberger Depth		
Bottom Log Interval		
Top Log Interval		
Casing Fluid Type		
Salinity		
Density		
Fluid Level		
BIT/CASING/TUBING STRING		
Bit Size		
From		
To		
Casing/Tubing Size		
Weight		
Grade		
From		
To		
Maximum Recorded Temperatures		
Logger On Bottom		
Unit Number		
Recorded By		
Witnessed By		

DEPTH SUMMARY LISTING

Depth System Equipment

Depth Control Parameters

Depth Control Remarks

DISCLAIMER

THE USE OF AND RELIANCE UPON THIS RECORDED-DATA BY THE HEREIN NAMED COMPANY (AND ANY OF ITS AFFILIATES, PARTNERS, REPRESENTATIVES, AGENTS, CONSULTANTS AND EMPLOYEES) IS SUBJECT TO THE TERMS AND CONDITIONS AGREED UPON BETWEEN SCHLUMBERGER AND THE COMPANY, INCLUDING: (a) RESTRICTIONS ON USE OF THE RECORDED-DATA; (b) DISCLAIMERS AND WAIVERS OF WARRANTIES AND REPRESENTATIONS REGARDING COMPANY'S USE OF AND RELIANCE UPON THE RECORDED-DATA; AND (c) CUSTOMER'S FULL AND SOLE RESPONSIBILITY FOR ANY INFERENCE DRAWN OR DECISION MADE IN CONNECTION WITH THE USE OF THIS RECORDED-DATA.

OTHER SERVICES1
OS1: None

Log correlated to ExxonMobil Solar composite supplied by client.

Maximum well deviation = 70 degrees at 2573m MDKB.

Objective:

Check the integrity of the MPBT Plug located at 4004m MDKB.

RIH with Sondex Tractor and PLT toolstring to top of MBPT Plug

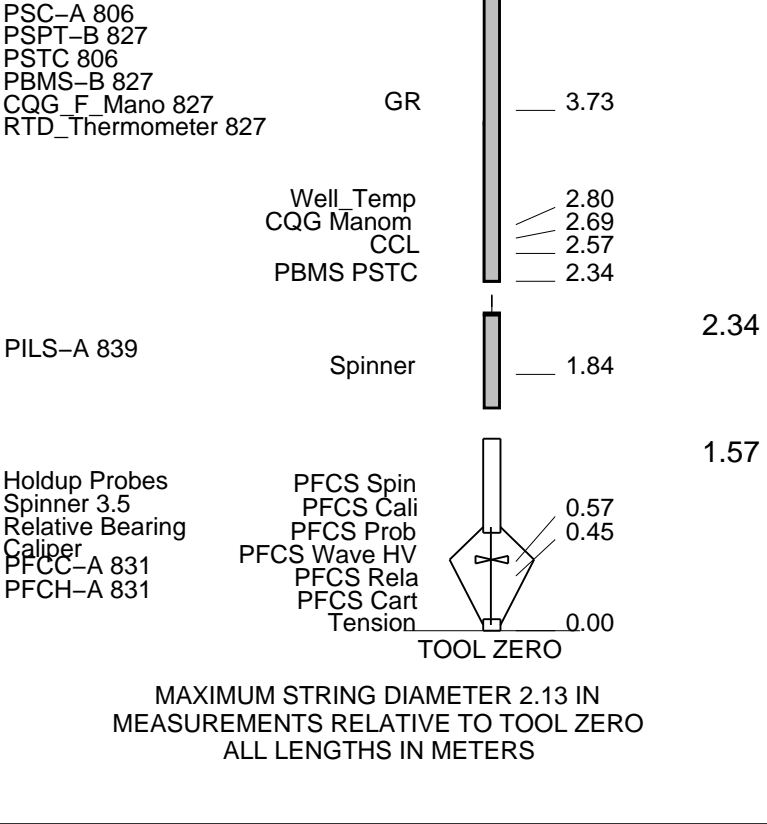
and carry out a station log with the well shut-in.

Then flow the well and with PLT toolstring still on top of MPBT Plug, carry out

a station log. Once completed, commence two up and down passes over the

a. Statement 19g. Since completed, commenced use of same down. Passed over the

4.86



Production String	(in)		(m)	Well Schematic	(m)	(in)		Casing String
	OD	ID	MD		MD	OD	ID	
Tubing	9.625	3.500	10.6		13.0	9.625	Casing String	
			458.0		13.0	13.375	9.625	Liner Hanger
Shutin Valve	3.500		458.0					
Gas Lift Mandrel	3.500		590.0					
Gas Lift Mandrel	3.500		1037.0					
Nipple	3.500		1187.0					

Rack
Nipple

9.625
3.500

3.500

3628.6

3628.6

3628.6

3628.6

3628.6

3628.6

3628.6

3628.6

3628.6

3628.6

3628.6

3628.6

3628.6

3628.6

3628.6

3628.6

3628.6

3628.6

3628.6

3628.6

3645.0

7.000

3645.0

9.625

7.000

3645.0

9.625

7.000

3645.0

9.625

7.000

3645.0

9.625

Casing String
Liner Hanger
Casing Shoe

3990.0

7.000

3990.0

7.000

3990.0

7.000

3990.0

7.000

3990.0

7.000

3990.0

7.000

3990.0

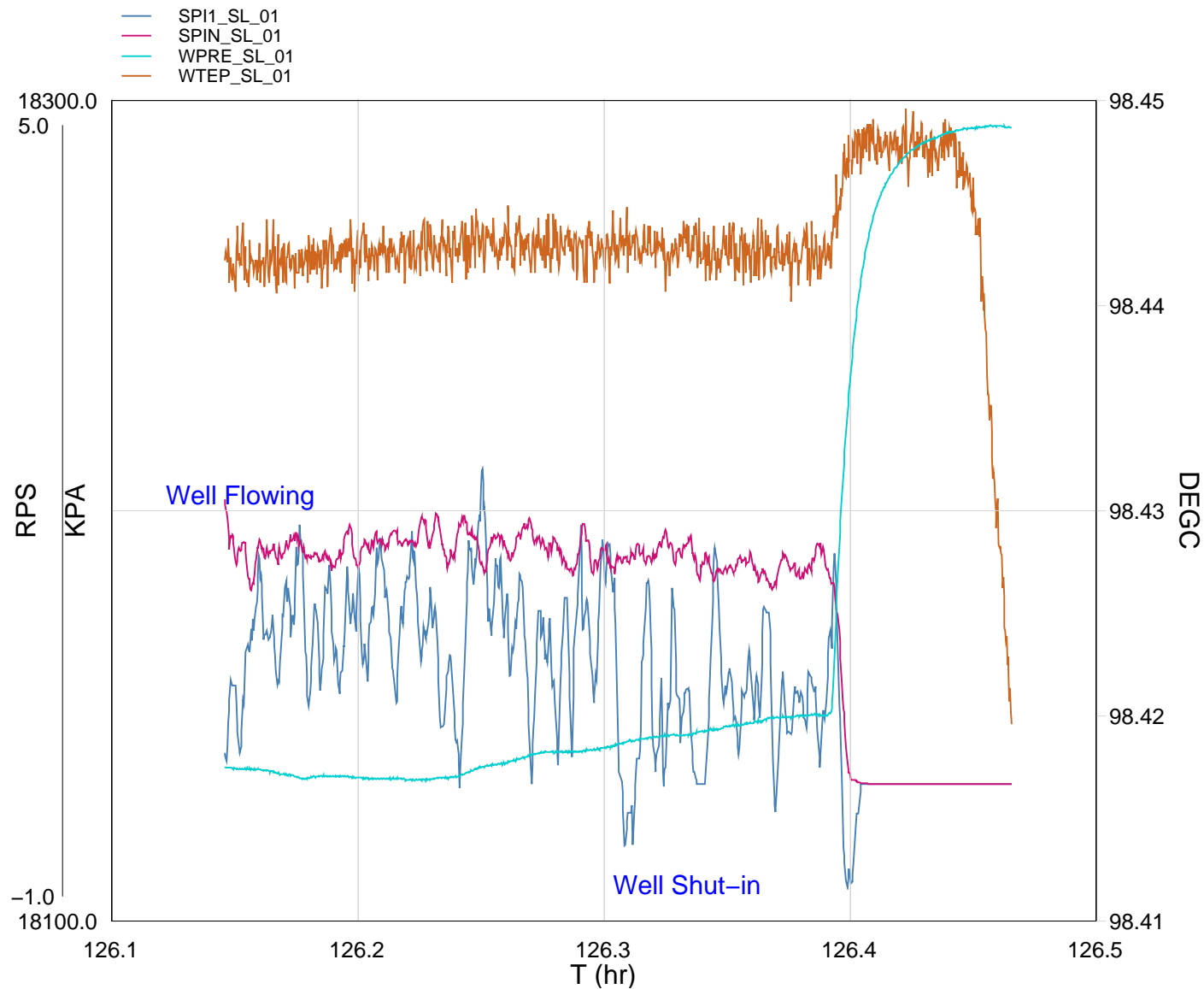
Perforation Zone
Casing Shoe

Schlumberger Job Event Summary

Time	Elapsed Time	Depth (M)	File
------	--------------	-----------	------

Simulated Log	7-May-2006 0:56	000:00	FCS_ILS_PSP_009LUP
Simulated Log	7-May-2006 0:56	000:02	FCS_ILS_PSP_010LUP
Simulated Log	7-May-2006 0:59	000:28	FCS_ILS_PSP_011LUP
Log Pass (up)	7-May-2006 4:09	000:07	4010.7 - 3945.2 FCS_ILS_PSP_013LUP
Log Pass (up)	7-May-2006 4:21	000:01	4004.8 - 3993.8 FCS_ILS_PSP_015LUP
Station Log	7-May-2006 4:22	000:00	3998.6 - 0.0 FCS_ILS_PSP_016LTP
Station Log	7-May-2006 4:23	000:13	3998.6 - 1.9 FCS_ILS_PSP_017LTP
Station Log	7-May-2006 4:43	000:01	4000.0 - 0.1 FCS_ILS_PSP_020LTP
Station Log	7-May-2006 4:43	000:01	4000.0 - 0.2 FCS_ILS_PSP_021LTP
Station Log	7-May-2006 4:46	000:30	3988.0 - 4.5 FCS_ILS_PSP_022LTP
Station Log	7-May-2006 5:17	000:10	4000.0 - 1.5 FCS_ILS_PSP_023LTP
Log Pass (up)	7-May-2006 5:29	000:04	4005.1 - 3965.3 FCS_ILS_PSP_024LUP
Log Pass (down)	7-May-2006 5:33	000:05	3965.3 - 4006.1 FCS_ILS_PSP_025LDP
Station Log	7-May-2006 5:38	000:03	4006.2 - 0.4 FCS_ILS_PSP_026LTP
Log Pass (up)	7-May-2006 5:41	000:03	4006.1 - 3965.1 FCS_ILS_PSP_027LUP
Station Log	7-May-2006 5:44	000:04	3970.0 - 0.6 FCS_ILS_PSP_028LTP
Log Pass (down)	7-May-2006 5:49	000:02	3965.1 - 4005.2 FCS_ILS_PSP_029LDP
Station Log	7-May-2006 5:54	000:03	3990.0 - 0.4 FCS_ILS_PSP_030LTP
Station Log	7-May-2006 5:56	000:05	3989.0 - 0.7 FCS_ILS_PSP_031LTP
Station Log	7-May-2006 6:08	000:19	4004.0 - 2.9 FCS_ILS_PSP_032LTP

MAXIS Field Log



TIME	SPIN	AUX SPIN	DEGF	PSIA
7320.0	2.1053	0.2349	209.1963	2630.4024
7350.0	1.6441	0.4108	209.1984	2630.5694
7380.0	1.7299	1.4704	209.1954	2630.5633
7410.0	1.6402	0.7575	209.1960	2630.4172
7440.0	1.7638	1.7155	209.1958	2630.2522
7470.0	1.6334	0.8601	209.1954	2630.2901
7500.0	1.7033	0.6939	209.1963	2630.3106
7530.0	1.6627	1.2775	209.1961	2630.2673
7560.0	1.7778	1.7700	209.1973	2630.2272
7590.0	1.7531	1.2889	209.1975	2630.2223
7620.0	1.9545	0.9569	209.1977	2630.1690
7650.0	1.7537	0.4228	209.1989	2630.2527
7680.0	1.9285	0.5131	209.1982	2630.3491

7710.0	1.5807	2.1101	209.1976	2630.6337
7740.0	1.7736	1.0986	209.1974	2630.7662
7770.0	1.8930	1.1049	209.1959	2630.9645
7800.0	1.7216	0.9585	209.1962	2631.1640
7830.0	1.6103	1.3636	209.1979	2631.1706
7860.0	1.7964	1.2954	209.1975	2631.2149
7890.0	1.7216	1.5843	209.1975	2631.3071
7920.0	1.6448	-0.2970	209.1999	2631.5314
7950.0	1.6672	1.4698	209.1965	2631.6402
7980.0	1.7463	0.5844	209.1965	2631.7655
8010.0	1.7859	0.6932	209.1985	2631.7535
8040.0	1.6436	0.5533	209.1964	2631.9195
8070.0	1.5936	0.8389	209.1979	2632.0753
8100.0	1.6975	0.8948	209.1957	2632.1772
8130.0	1.4646	1.0052	209.1963	2632.3645
8160.0	1.5797	0.3704	209.1941	2632.3766
8190.0	1.5759	0.7673	209.1980	2632.4653
8220.0	1.4740	1.0897	209.1981	2632.7909
8250.0	0.0315	-0.6855	209.2054	2645.2399
8280.0	0.0000	0.0000	209.2072	2650.0493
8310.0	0.0000	0.0000	209.2057	2651.7042
8340.0	0.0000	0.0000	209.2053	2652.4865
8370.0	0.0000	0.0000	209.2064	2652.8650
8400.0	0.0000	0.0000	209.2066	2653.1033
8430.0	0.0000	0.0000	209.1992	2653.2287
8460.0	0.0000	0.0000	209.1731	2653.2767

Schlumberger

20 m/min Downwards Pass
3975m MDKB to HUD – Well Flowing

MAXIS Field Log

Input DLIS Files

PSP_SPIN	Flip_FCS_ILS_PSP_043LUC	CUSTOMER	07-May-2006 15:24	4005.2 M	3965.1 M
----------	-------------------------	----------	-------------------	----------	----------

Output DLIS Files

DEFAULT	FCS_ILS_PSP_044PUP	FN:75	PRODUCER	07-May-2006 15:26	3999.7 M	3955.2 M
PSP_SPIN	FCS_ILS_PSP_044PUC	FN:76	CUSTOMER	07-May-2006 15:26	3999.7 M	3955.2 M

OP System Version: 14C0-302

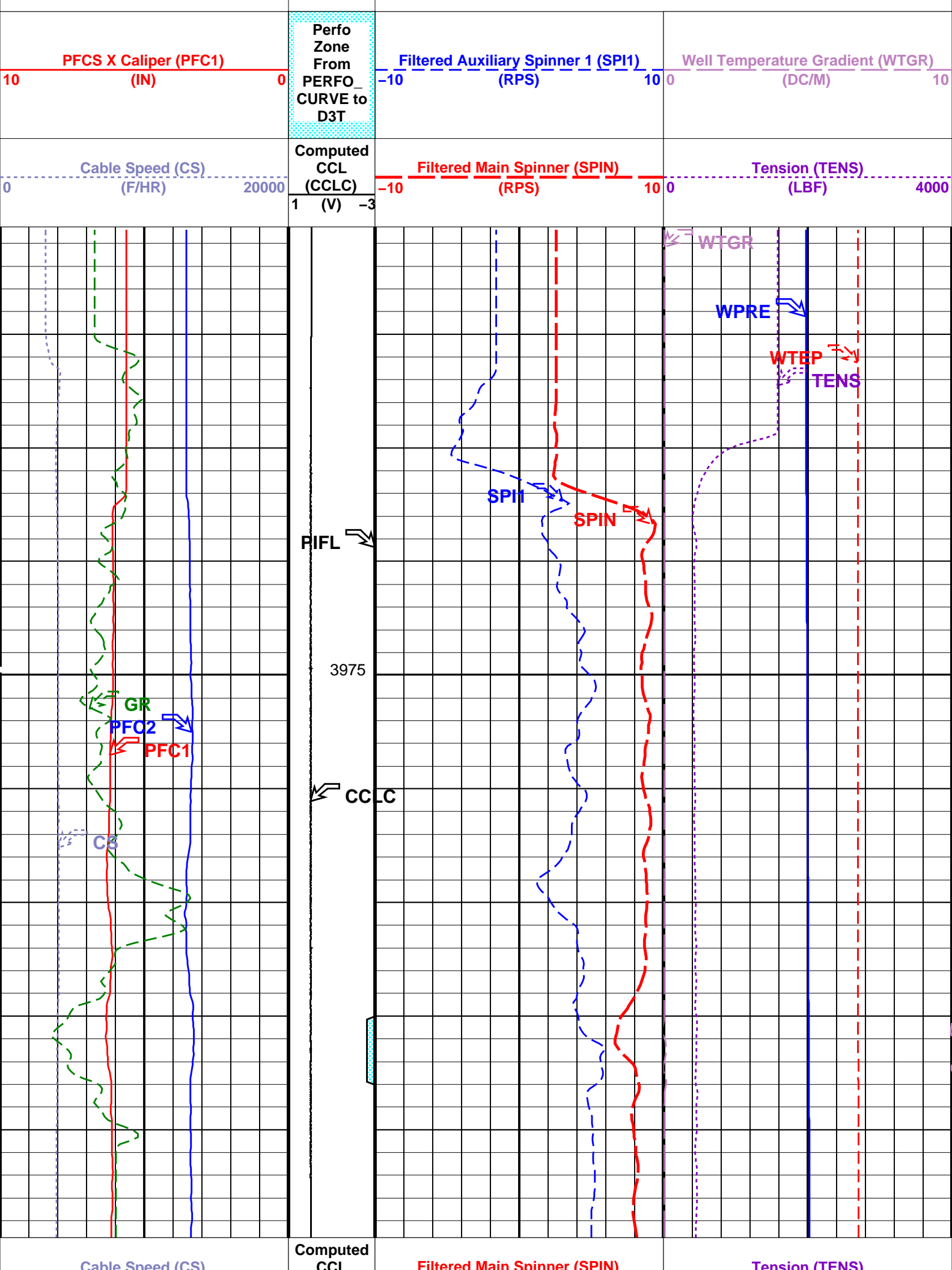
MCM

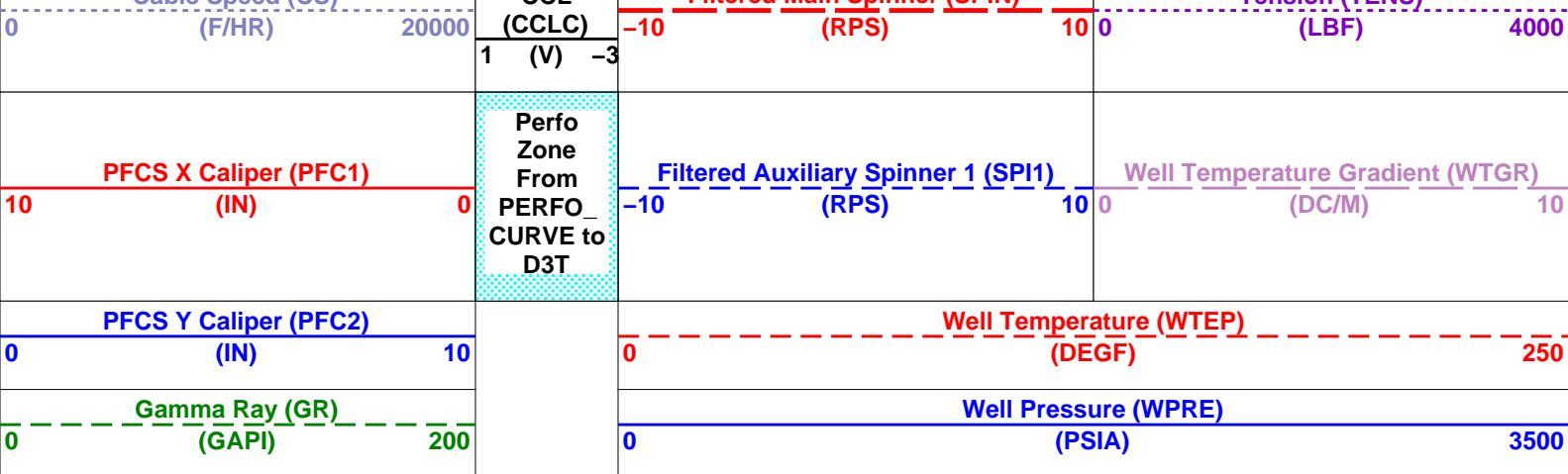
PFCS-A	14C0-302	PILS-A	14C0-302
PSPT-A/B	14C0-302		

PIP SUMMARY

☒ Time Mark Every 60 S

<div> <div>Gamma Ray (GR)</div> <div>(GAPI)</div> <div>0200</div> </div>		<div> <div>Well Pressure (WPRES)</div> <div>(PSIA)</div> <div>03500</div> </div>	
<div> <div>PFCS Y Caliper (PFC2)</div> <div>(IN)</div> <div>010</div> </div>		<div> <div>Well Temperature (WTEP)</div> <div>(DEGF)</div> <div>0250</div> </div>	





PIP SUMMARY

Time Mark Every 60 S

Format: PSP_1 Vertical Scale: 1:200

Graphics File Created: 07-May-2006 15:26

OP System Version: 14C0-302

MCM

PFCS-A 14C0-302 PILS-A 14C0-302
PSPT-A/B 14C0-302

Parameters

DLIS Name	Description	Value
PFCS-A: PSP Flow and caliper Tool		
AMOD	Spinner Filter Averaging Mode	LINEAR_AVERAGE
SDCF	Spinner Depth Constant Filter	6
SPI1	Auxiliary Spinner 1 Flowmeter Sonde	PILS-A
SPIN	Main Spinner Flowmeter Sonde	PFCS-A_3.5
PILS-A: PSP In Line Spinner Flowmeter		
AMOD	Spinner Filter Averaging Mode	LINEAR_AVERAGE
SDCF	Spinner Depth Constant Filter	6
SPI1	Auxiliary Spinner 1 Flowmeter Sonde	PILS-A
SPIN	Main Spinner Flowmeter Sonde	PFCS-A_3.5
System and Miscellaneous		
DO	Depth Offset for Playback	-5.5 M
PP	Playback Processing	NORMAL

Input DLIS Files

PSP_SPIN	Flip_FCS_ILS_PSP_043LUC	CUSTOMER	07-May-2006 15:24	4005.2 M	3965.1 M
----------	-------------------------	----------	-------------------	----------	----------

Output DLIS Files

DEFAULT	FCS_ILS_PSP_044PUP	FN:75	PRODUCER	07-May-2006 15:26
PSP_SPIN	FCS_ILS_PSP_044PUC	FN:76	CUSTOMER	07-May-2006 15:26

Schlumberger

20 m/min Upwards Pass
HUD to 3975m MDKB – Well Flowing

MAXIS Field Log

Input DLIS Files

DEFAULT	FCS_ILS_PSP_027LUP	FN:44	PRODUCER	07-May-2006 05:41	4006.1 M	3965.1 M
---------	--------------------	-------	----------	-------------------	----------	----------

Output DLIS Files

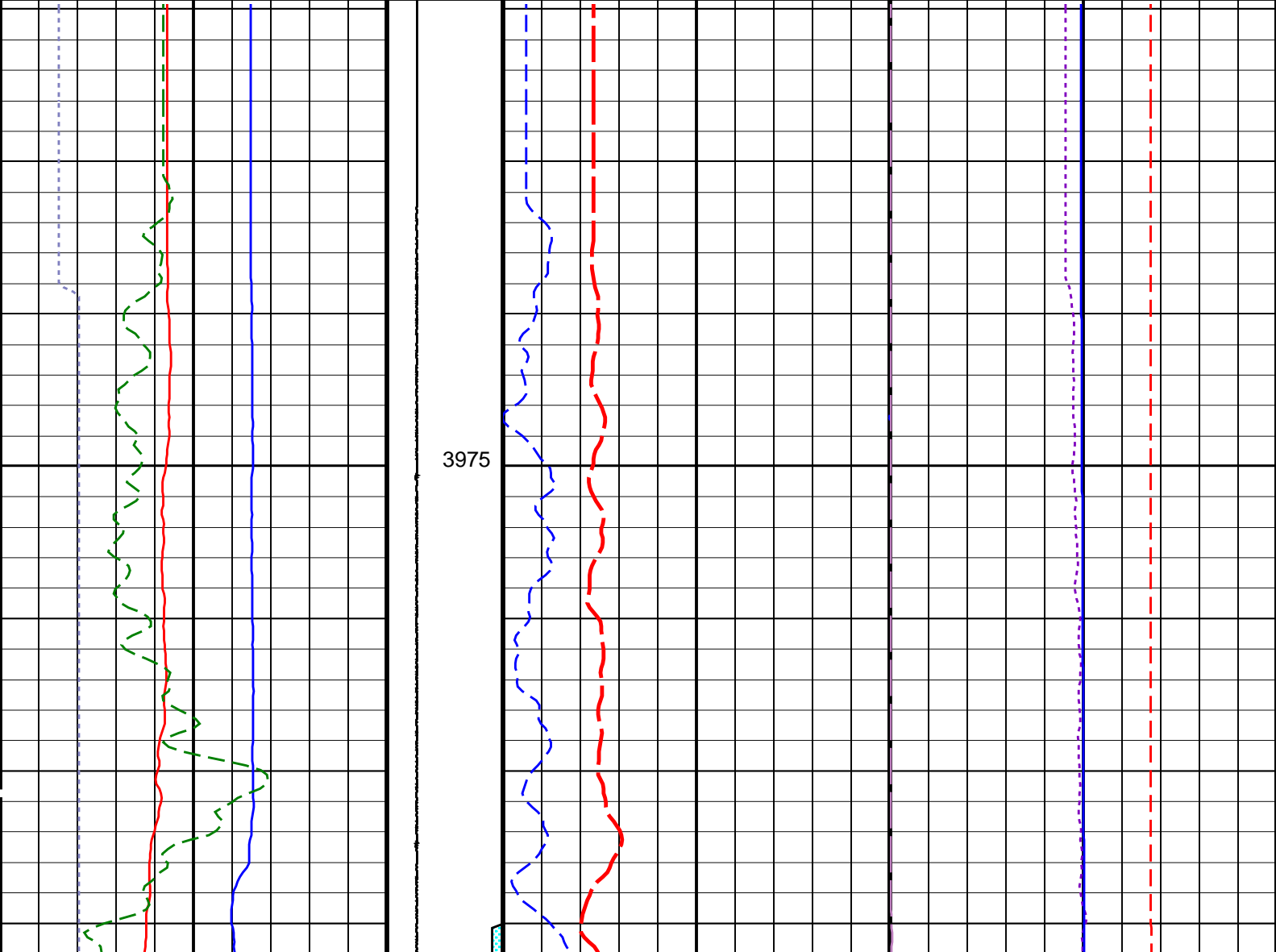
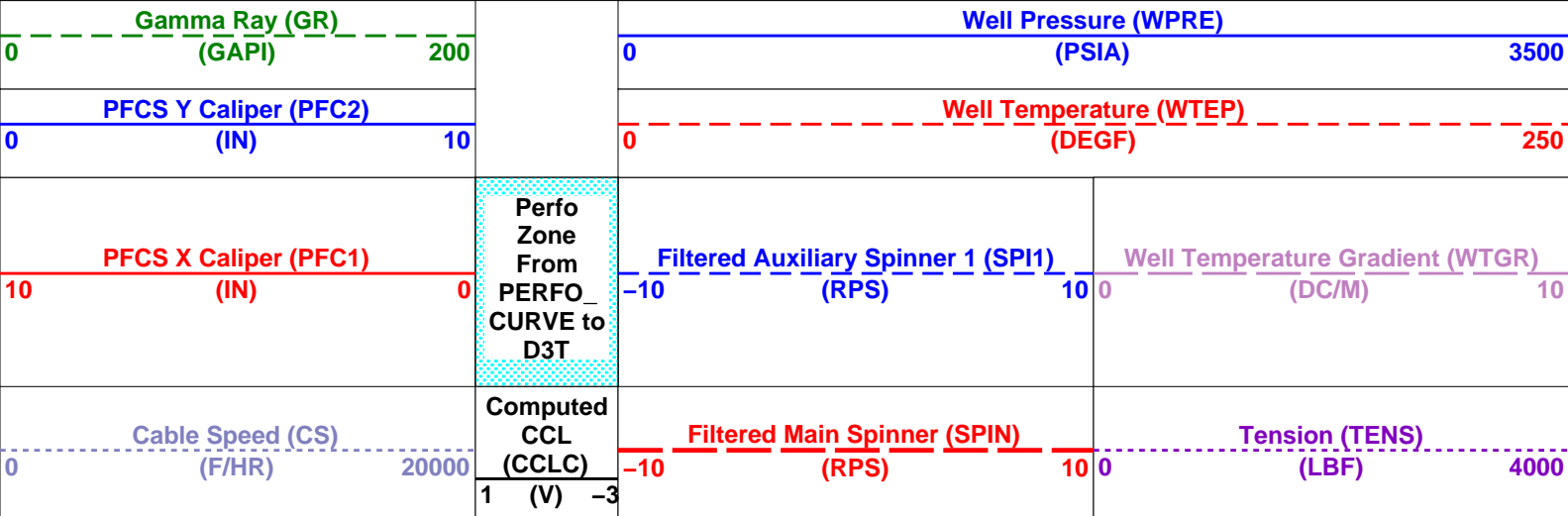
DEFAULT	FCS_ILS_PSP_038PUP	FN:66	PRODUCER	07-May-2006 06:52	4005.1 M	3959.7 M
PSP_SPIN	FCS_ILS_PSP_038PUC	FN:67	CUSTOMER	07-May-2006 06:52	4005.1 M	3959.7 M

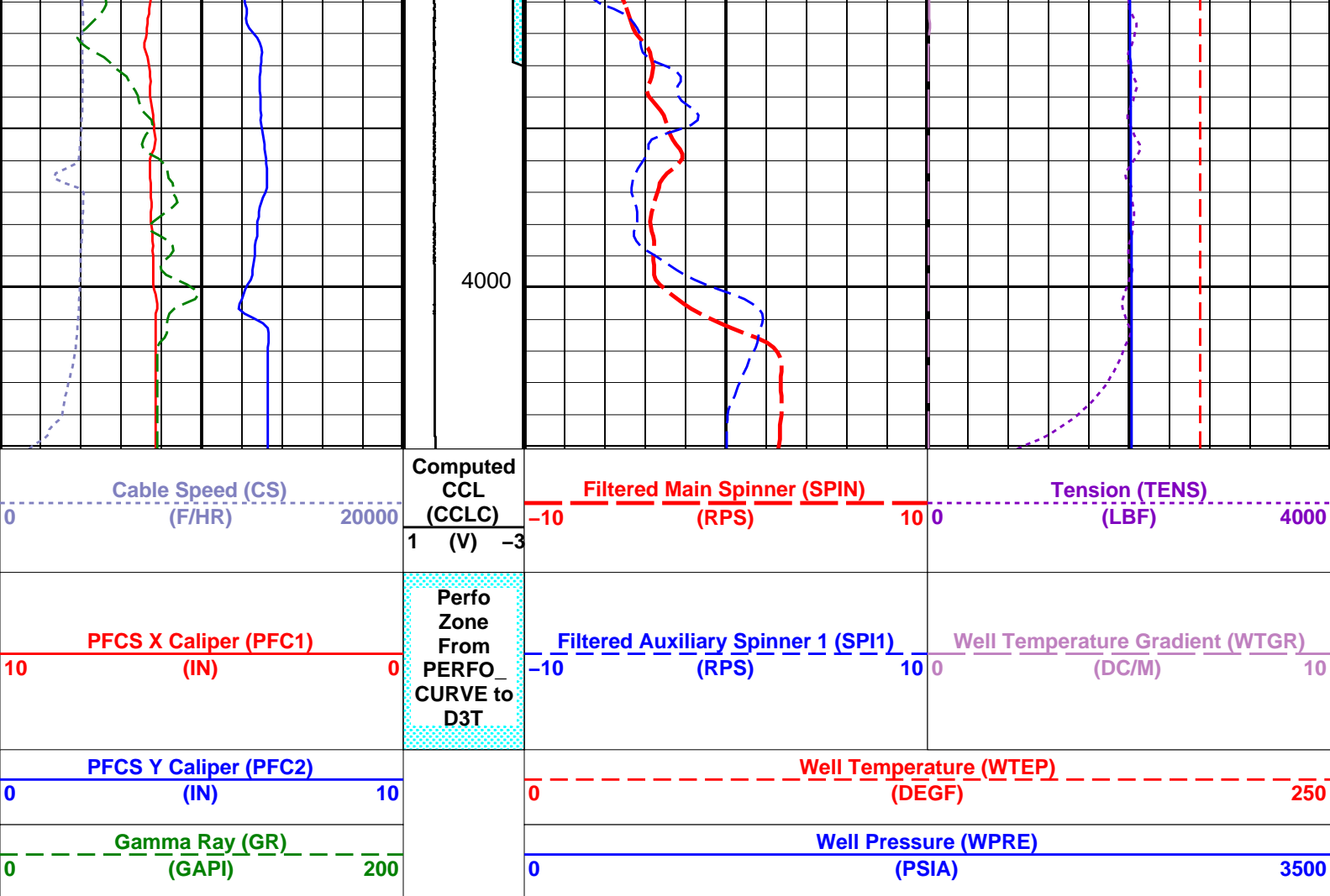
OP System Version: 14C0-302
MCM

PFCS-A	14C0-302	PILS-A	14C0-302
PSPT-A/B	14C0-302		

PIP SUMMARY

Time Mark Every 60 S





PIP SUMMARY

Time Mark Every 60 S

Format: PSP_1 Vertical Scale: 1:200

Graphics File Created: 07-May-2006 06:52

OP System Version: 14C0-302

MCM

PFCS-A 14C0-302
PSPT-A/B 14C0-302

PILS-A 14C0-302

Parameters

DLIS Name	Description	Value
PFCS-A: PSP Flow and caliper Tool		
AMOD	Spinner Filter Averaging Mode	LINEAR_AVERAGE
SDCF	Spinner Depth Constant Filter	6
SPI1	Auxiliary Spinner 1 Flowmeter Sonde	PILS-A
SPIN	Main Spinner Flowmeter Sonde	PFCS-A_3.5
PILS-A: PSP In Line Spinner Flowmeter		
AMOD	Spinner Filter Averaging Mode	LINEAR_AVERAGE
SDCF	Spinner Depth Constant Filter	6
SPI1	Auxiliary Spinner 1 Flowmeter Sonde	PILS-A
SPIN	Main Spinner Flowmeter Sonde	PFCS-A_3.5
System and Miscellaneous		
DO	Depth Offset for Playback	-1.0 M
PP	Playback Processing	NORMAL

Input DLIS Files

DEFAULT	FCS_ILS_PSP_027LUP	FN:44	PRODUCER	07-May-2006 05:41	4006.1 M	3965.1 M
---------	--------------------	-------	----------	-------------------	----------	----------

Output DLIS Files

DEFAULT	FCS_ILS_PSP_038PUP	FN:66	PRODUCER	07-May-2006 06:52
PSP_SPIN	FCS_ILS_PSP_038PUC	FN:67	CUSTOMER	07-May-2006 06:52

Input DLIS Files

PSP_SPIN	Flip_FCS_ILS_PSP_045LUC	CUSTOMER	07-May-2006 15:31	4006.1 M	3965.3 M
----------	-------------------------	----------	-------------------	----------	----------

Output DLIS Files

DEFAULT	FCS_ILS_PSP_046PUP	FN:77	PRODUCER	07-May-2006 15:32	4001.1 M	3955.8 M
PSP_SPIN	FCS_ILS_PSP_046PUC	FN:78	CUSTOMER	07-May-2006 15:32	4001.1 M	3955.8 M

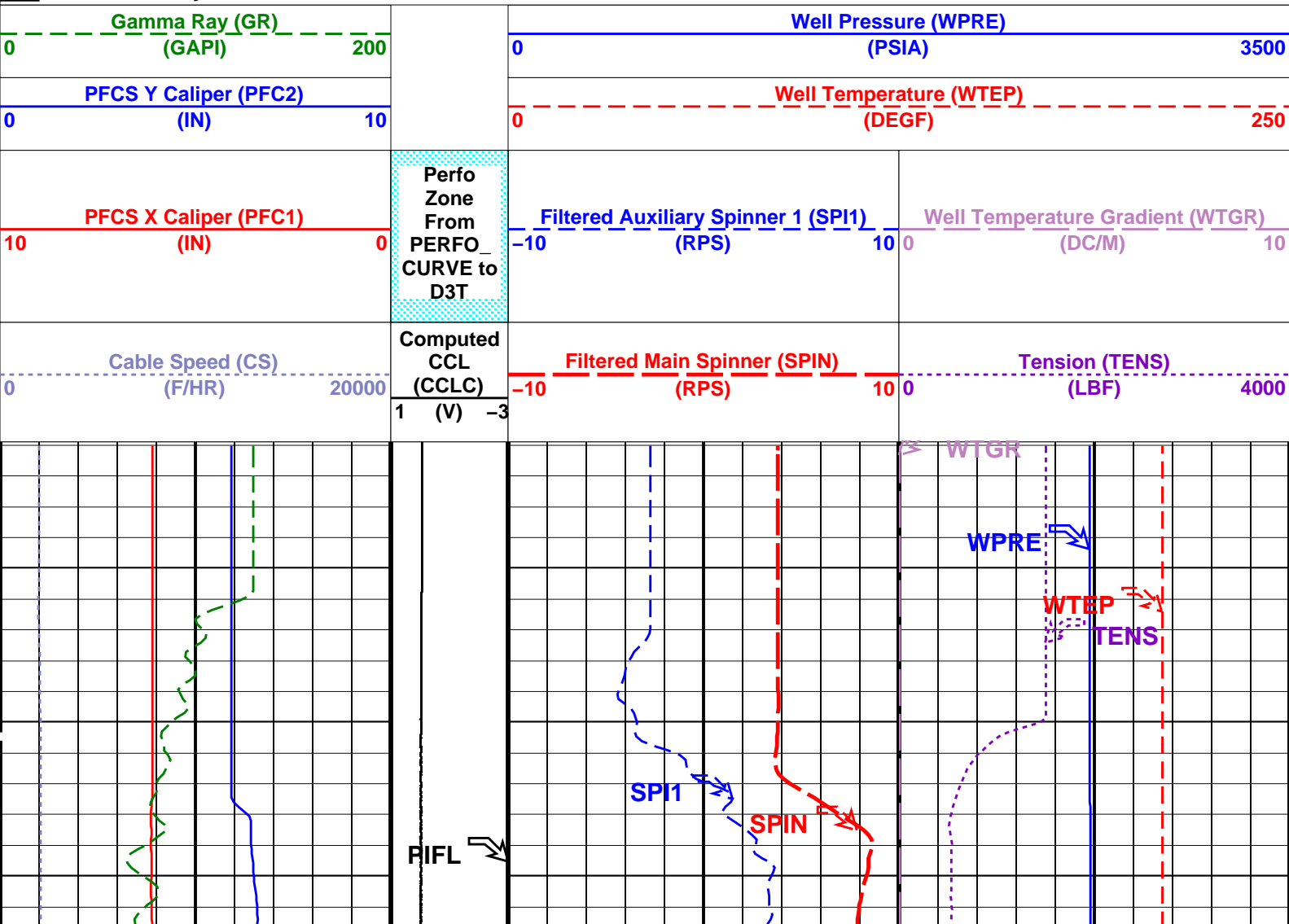
OP System Version: 14C0-302

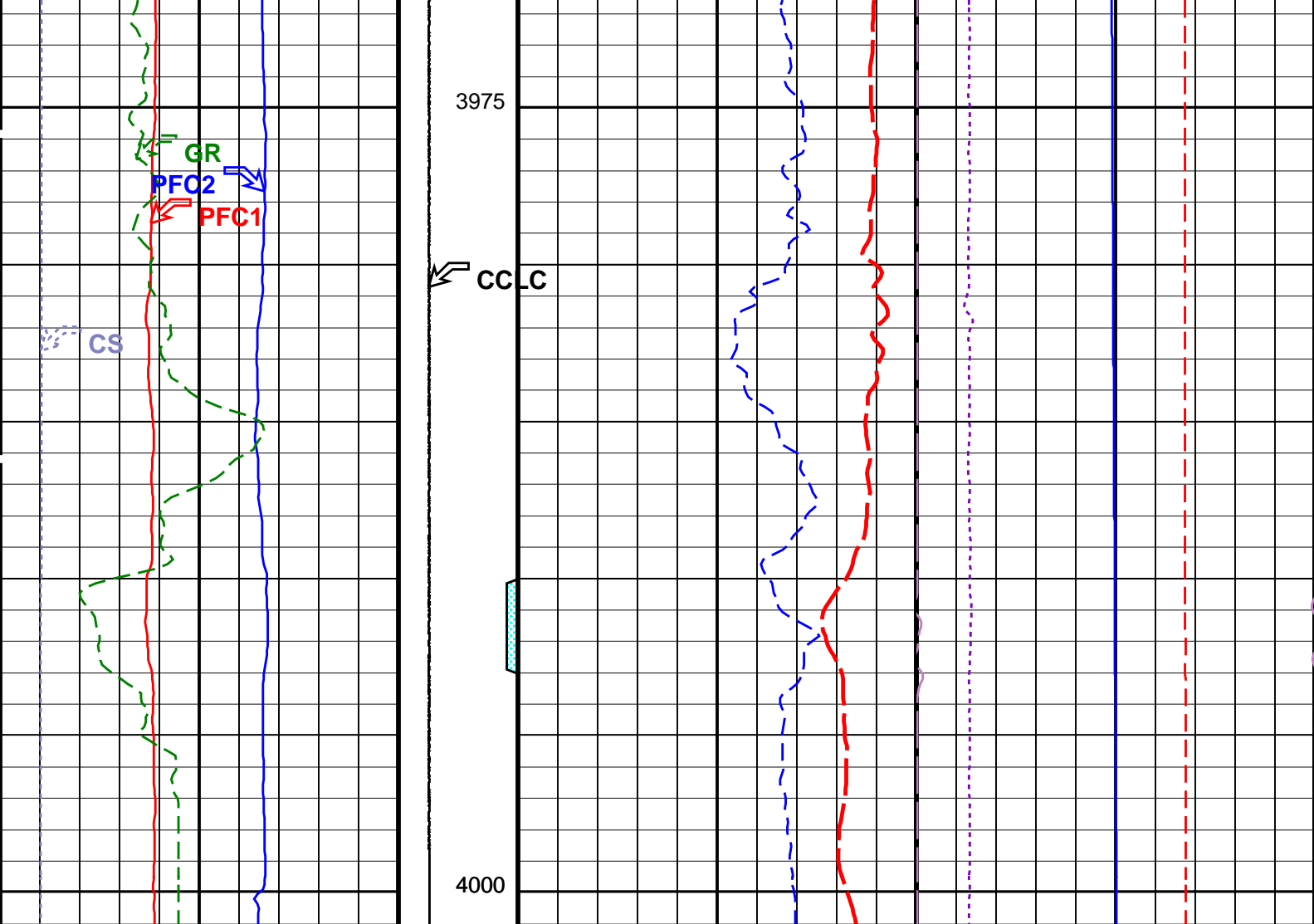
MCM

PFCS-A	14C0-302	PILS-A	14C0-302
PSPT-A/B	14C0-302		

PIP SUMMARY

Time Mark Every 60 S





Cable Speed (CS) (F/HR)	20000	Computed CCL (CCLC) (V)	-3	Filtered Main Spinner (SPIN) (RPS)	10	Tension (TENS) (LBF)	4000
PFC1 X Caliper (PFC1) (IN)	0	Perfo Zone From PERFO CURVE to D3T	-10	Filtered Auxiliary Spinner 1 (SPI1) (RPS)	10	Well Temperature Gradient (WTGR) (DC/M)	10
PFC2 Y Caliper (PFC2) (IN)	10			Well Temperature (WTEP) (DEGF)	250	Well Pressure (WPRES) (PSIA)	3500
Gamma Ray (GR) (GAPI)	200						

PIP SUMMARY			
Time Mark Every 60 S			
Format: PSP_1		Vertical Scale: 1:200	
		Graphics File Created: 07-May-2006 15:32	

OP System Version: 14C0-302			
MCM			
PFC1-A	14C0-302	PILS-A	14C0-302
PSPT-A/B	14C0-302		

Parameters		
DLIS Name	Description	Value
PFC1-A	PSP Flow and caliper Tool	

AMOD	Spinner Filter Averaging Mode	LINEAR_AVERAGE	6	
SDCF	Spinner Depth Constant Filter			
SPI1	Auxiliary Spinner 1 Flowmeter Sonde	PILS-A		
SPIN	Main Spinner Flowmeter Sonde	PFCS-A_3.5		
	PILS-A: PSP In Line Spinner Flowmeter			
AMOD	Spinner Filter Averaging Mode	LINEAR_AVERAGE	6	
SDCF	Spinner Depth Constant Filter			
SPI1	Auxiliary Spinner 1 Flowmeter Sonde	PILS-A		
SPIN	Main Spinner Flowmeter Sonde	PFCS-A_3.5		
	System and Miscellaneous			
DO	Depth Offset for Playback	-5.0	M	
PP	Playback Processing	NORMAL		

Input DLIS Files

PSP_SPIN	Flip_FCS_ILS_PSP_045LUC	CUSTOMER	07-May-2006 15:31	4006.1 M	3965.3 M
----------	-------------------------	----------	-------------------	----------	----------

Output DLIS Files

DEFAULT	FCS_ILS_PSP_046PUP	FN:77	PRODUCER	07-May-2006 15:32
PSP_SPIN	FCS_ILS_PSP_046PUC	FN:78	CUSTOMER	07-May-2006 15:32

Schlumberger

10 m/min Upwards Pass
HUD to 3975m MDKB – Well Flowing

MAXIS Field Log

Input DLIS Files

DEFAULT	FCS_ILS_PSP_033PUP	FN:56	PRODUCER	07-May-2006 06:29	4004.0 M	3959.8 M
---------	--------------------	-------	----------	-------------------	----------	----------

Output DLIS Files

DEFAULT	FCS_ILS_PSP_035PUP	FN:60	PRODUCER	07-May-2006 06:43	4004.0 M	3955.4 M
PSP_SPIN	FCS_ILS_PSP_035PUC	FN:61	CUSTOMER	07-May-2006 06:43	4004.0 M	3955.4 M

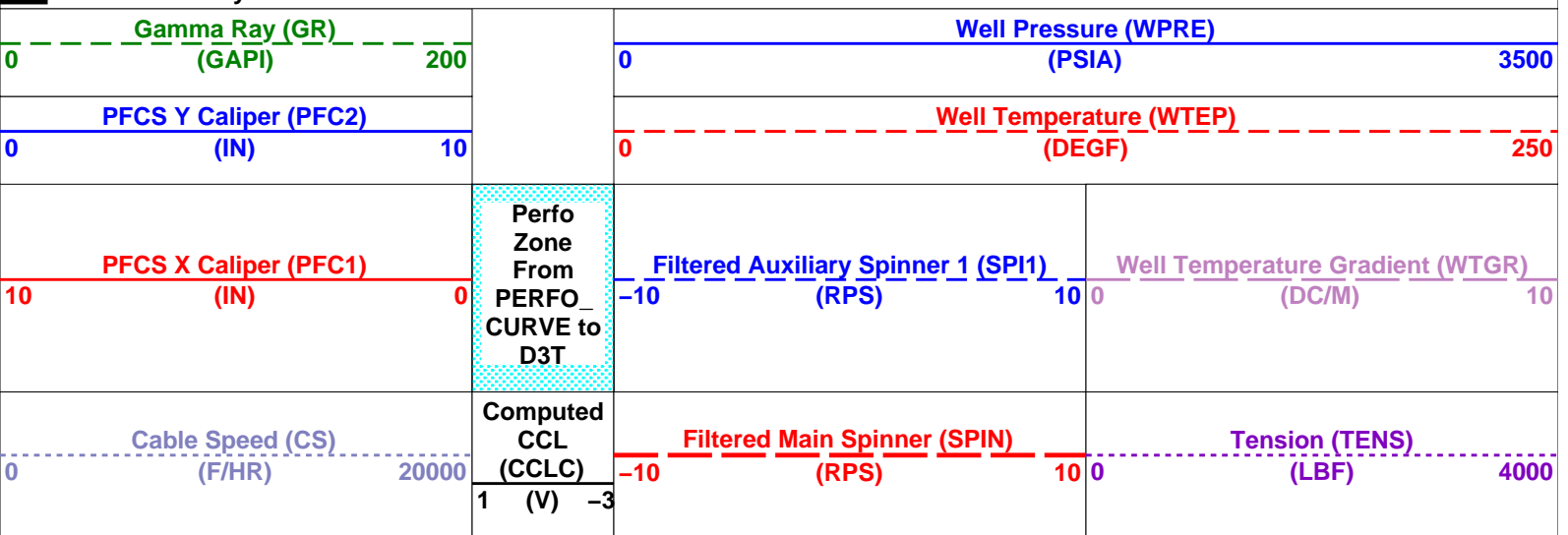
OP System Version: 14C0-302

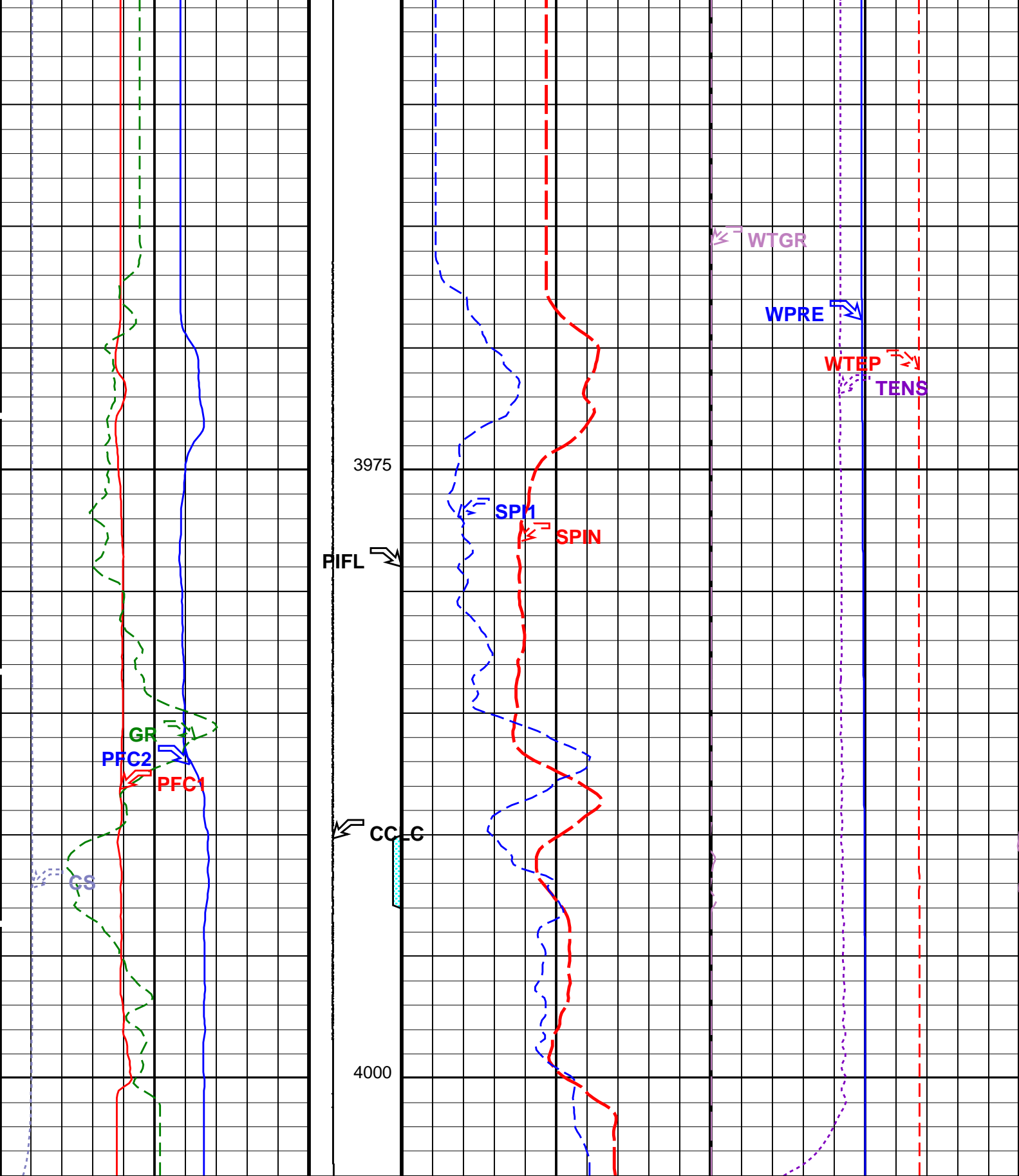
MCM

PFCS-A	14C0-302	PILS-A	14C0-302
PSPT-A/B	14C0-302		

PIP SUMMARY

☒ Time Mark Every 60 S





Cable Speed (CS) (F/HR)	Computed CCL (CCLC) (V)	Filtered Main Spinner (SPIN) (RPS)	Tension (TENS) (LBF)
PFCs X Caliper (PFC1) (IN)	Perfo Zone From PERFO	Filtered Auxiliary Spinner 1 (SP1) (RPS)	Well Temperature Gradient (WTGR) (DC/M)

		CURVE to D3T	
PFCS Y Caliper (PFC2)			Well Temperature (WTEP)
0	(IN) 10		0 250
Gamma Ray (GR)			Well Pressure (WPRE)
0	(GAPI) 200		0 3500

PIP SUMMARY

Time Mark Every 60 S	
Format: PSP_1	Vertical Scale: 1:200
Graphics File Created: 07-May-2006 06:43	

OP System Version: 14C0-302
MCM

PFCS-A	14C0-302	PILS-A	14C0-302
PSPT-A/B	14C0-302		

Parameters

DLIS Name	Description	Value
PFCS-A: PSP Flow and caliper Tool		
AMOD	Spinner Filter Averaging Mode	LINEAR_AVERAGE
SDCF	Spinner Depth Constant Filter	6
SPI1	Auxiliary Spinner 1 Flowmeter Sonde	PILS-A
SPIN	Main Spinner Flowmeter Sonde	PFCS-A_3.5
PILS-A: PSP In Line Spinner Flowmeter		
AMOD	Spinner Filter Averaging Mode	LINEAR_AVERAGE
SDCF	Spinner Depth Constant Filter	6
SPI1	Auxiliary Spinner 1 Flowmeter Sonde	PILS-A
SPIN	Main Spinner Flowmeter Sonde	PFCS-A_3.5
System and Miscellaneous		
DO	Depth Offset for Playback	0.0 M
PP	Playback Processing	NORMAL

Input DLIS Files

DEFAULT	FCS_ILS_PSP_033PUP	FN:56	PRODUCER	07-May-2006 06:29	4004.0 M	3959.8 M
---------	--------------------	-------	----------	-------------------	----------	----------

Output DLIS Files

DEFAULT	FCS_ILS_PSP_035PUP	FN:60	PRODUCER	07-May-2006 06:43		
PSP_SPIN	FCS_ILS_PSP_035PUC	FN:61	CUSTOMER	07-May-2006 06:43		



Station Log at 4000m MDKB
Well Flowing

MAXIS Field Log

Output DLIS Files

DEFAULT	FCS_ILS_PSP_023LTP	FN:36	PRODUCER	07-May-2006 05:17	4000.0 M	1.5 M
PSP_SPIN	FCS_ILS_PSP_023LTC	FN:37	CUSTOMER	07-May-2006 05:17	4000.0 M	1.5 M

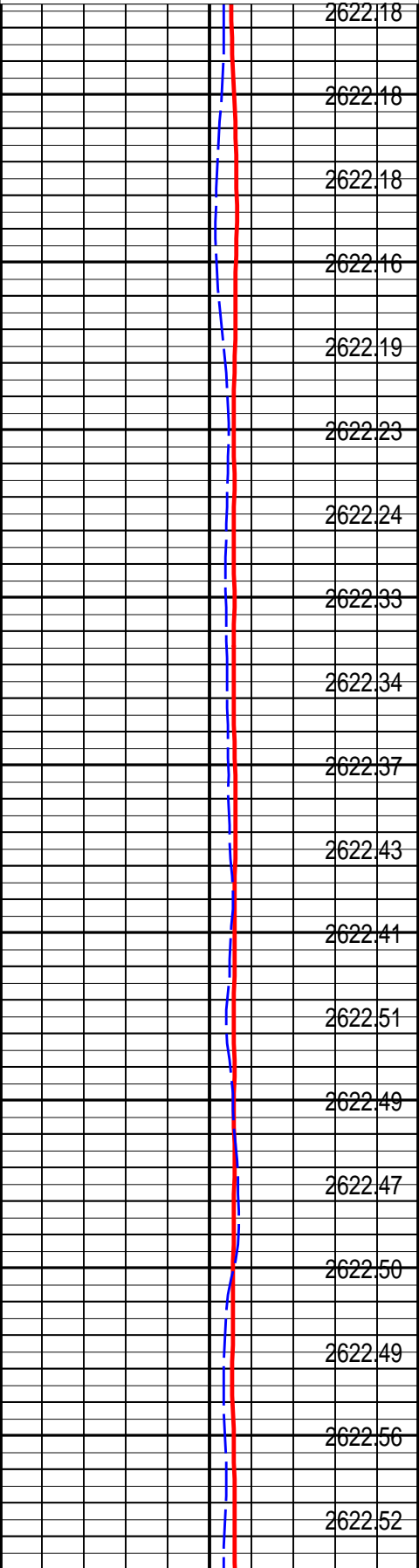
OP System Version: 14C0-302
MCM

PFCS-A	14C0-302	PILS-A	14C0-302
PSPT-A/B	14C0-302		

Amplified Well Pressure (WPRE_SL)

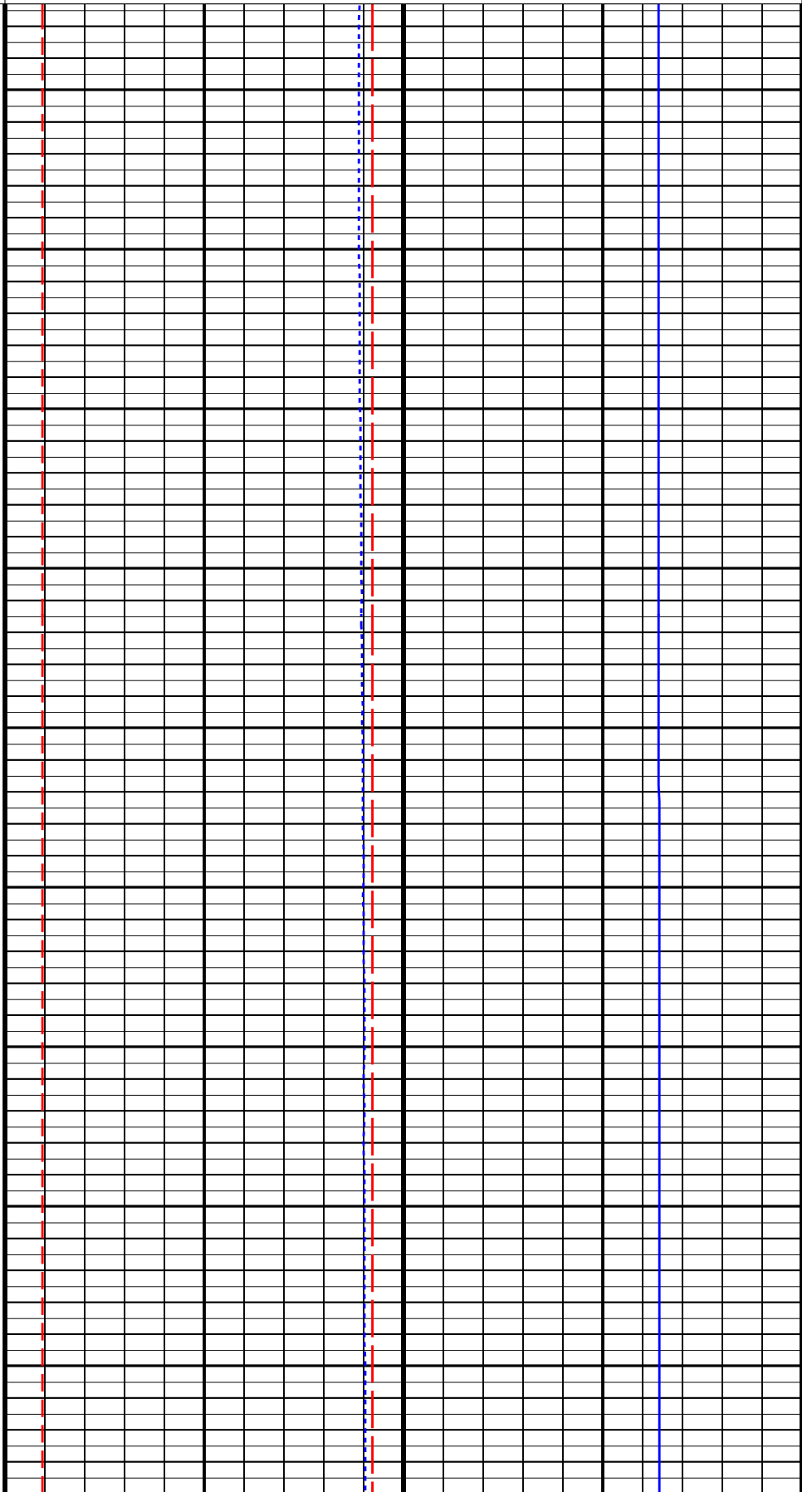
Filtered Main Spinner (SPIN_SL)		
-20	(RPS)	20
Filtered Auxiliary Spinner 1 (SPI1_SL)		
-20	(RPS)	20

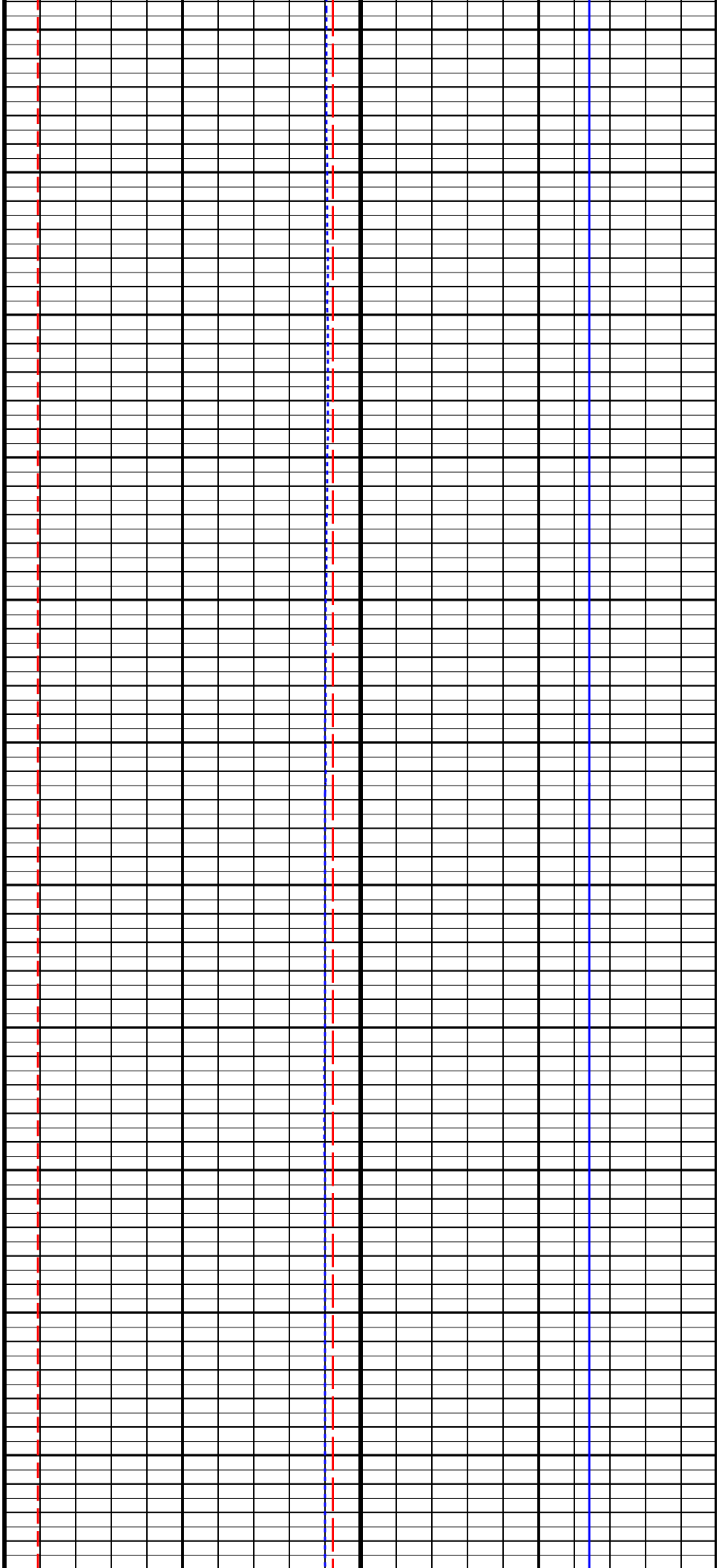
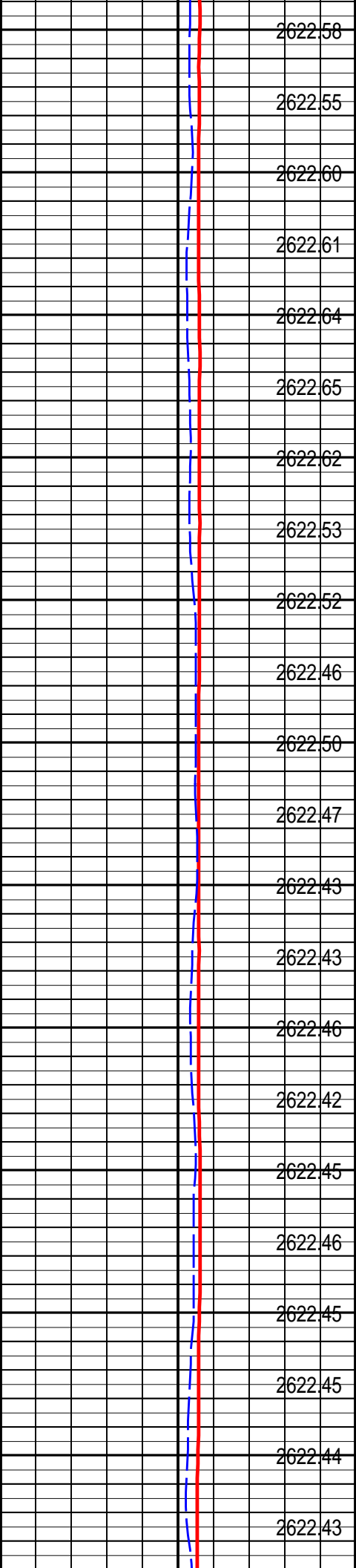
Well Pressure (WPRE_SL)		
(PSIA)		

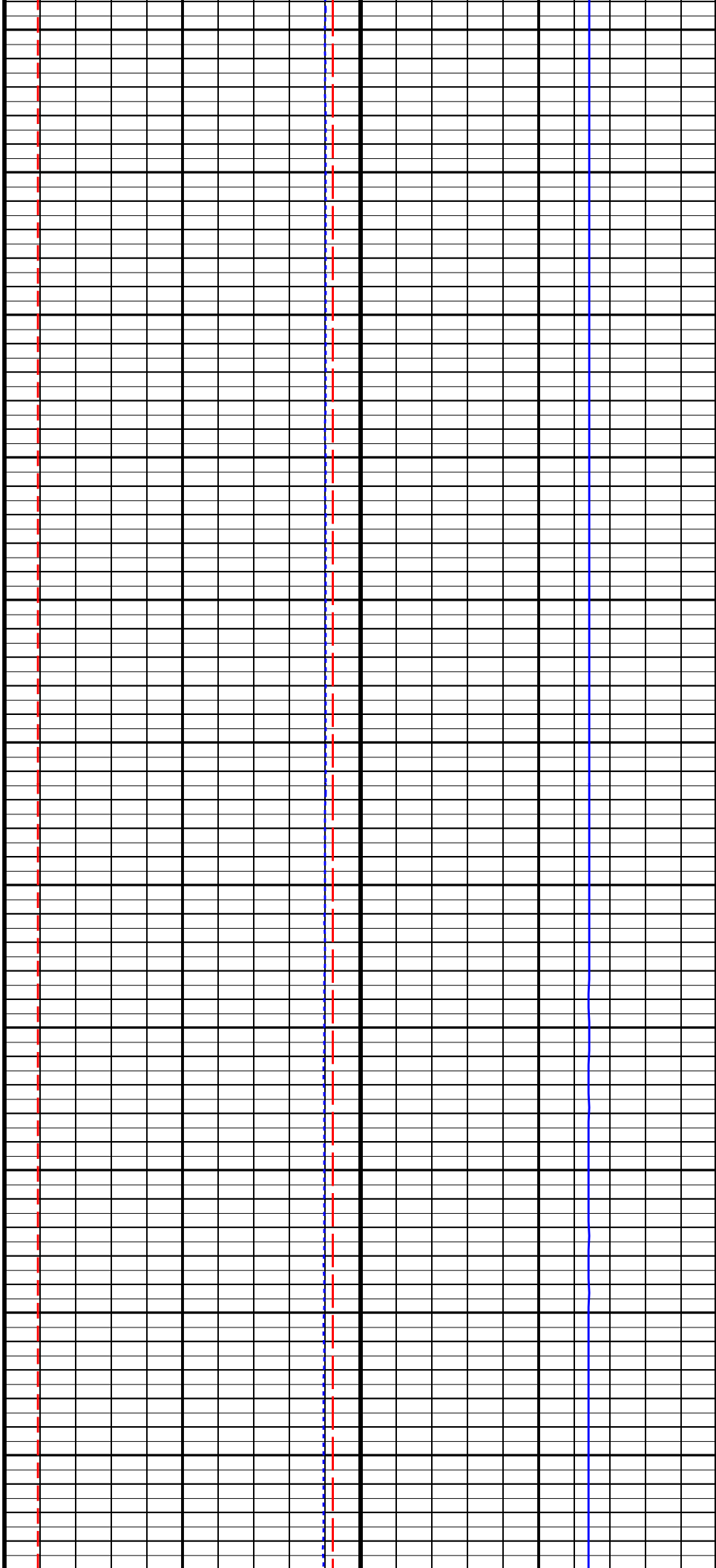
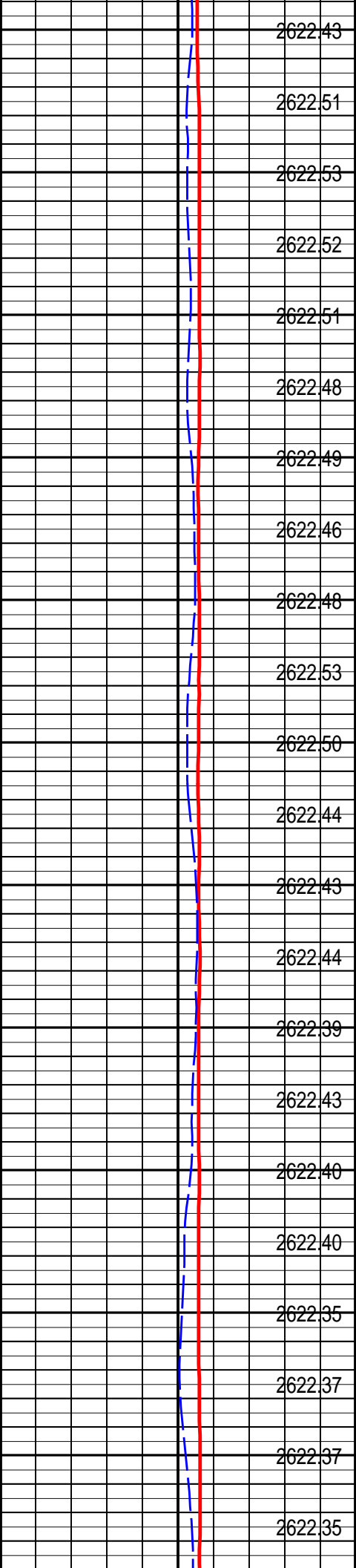


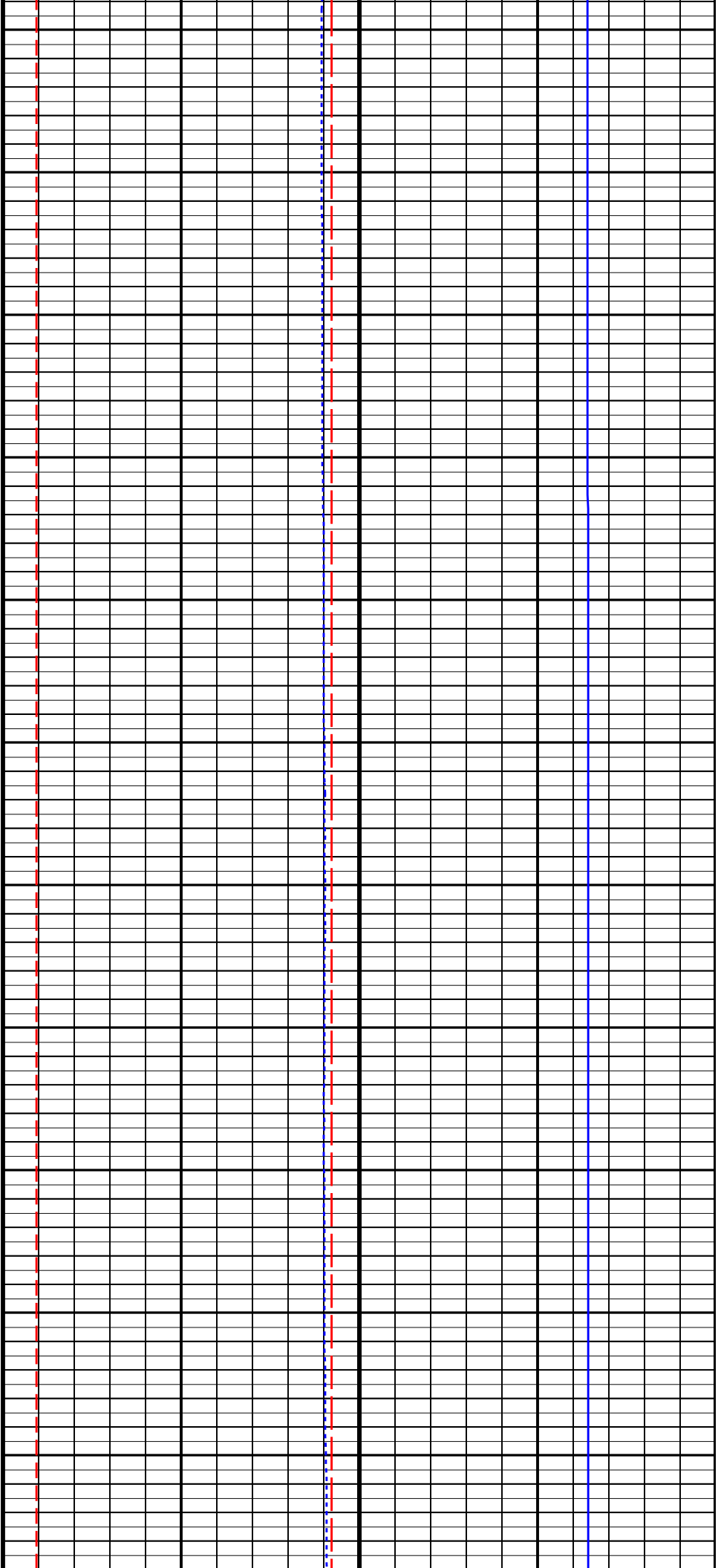
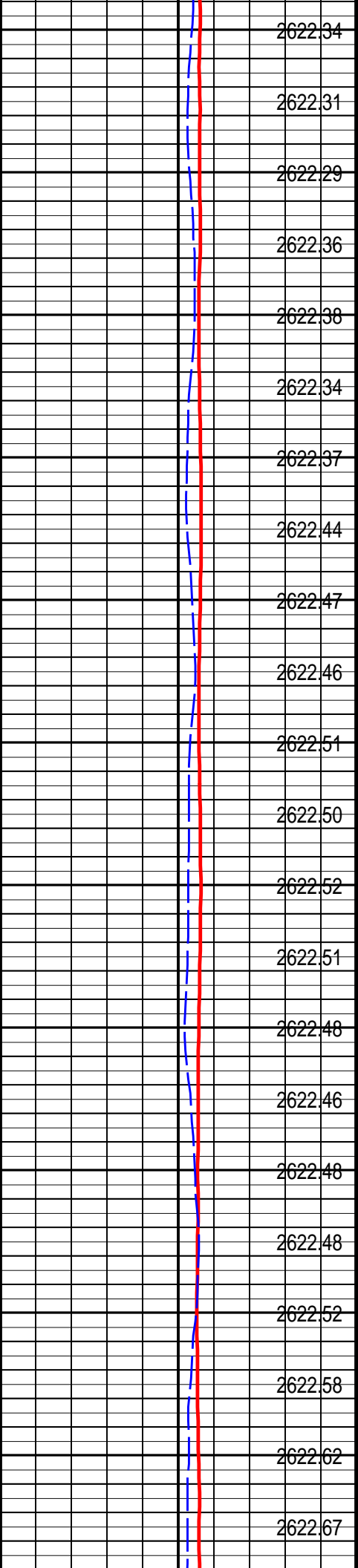
Well Pressure (WPRE_SL)		
(PSIA)		
0		3200
Well Temperature (WTEP_SL)		
(DEGF)		
0		20

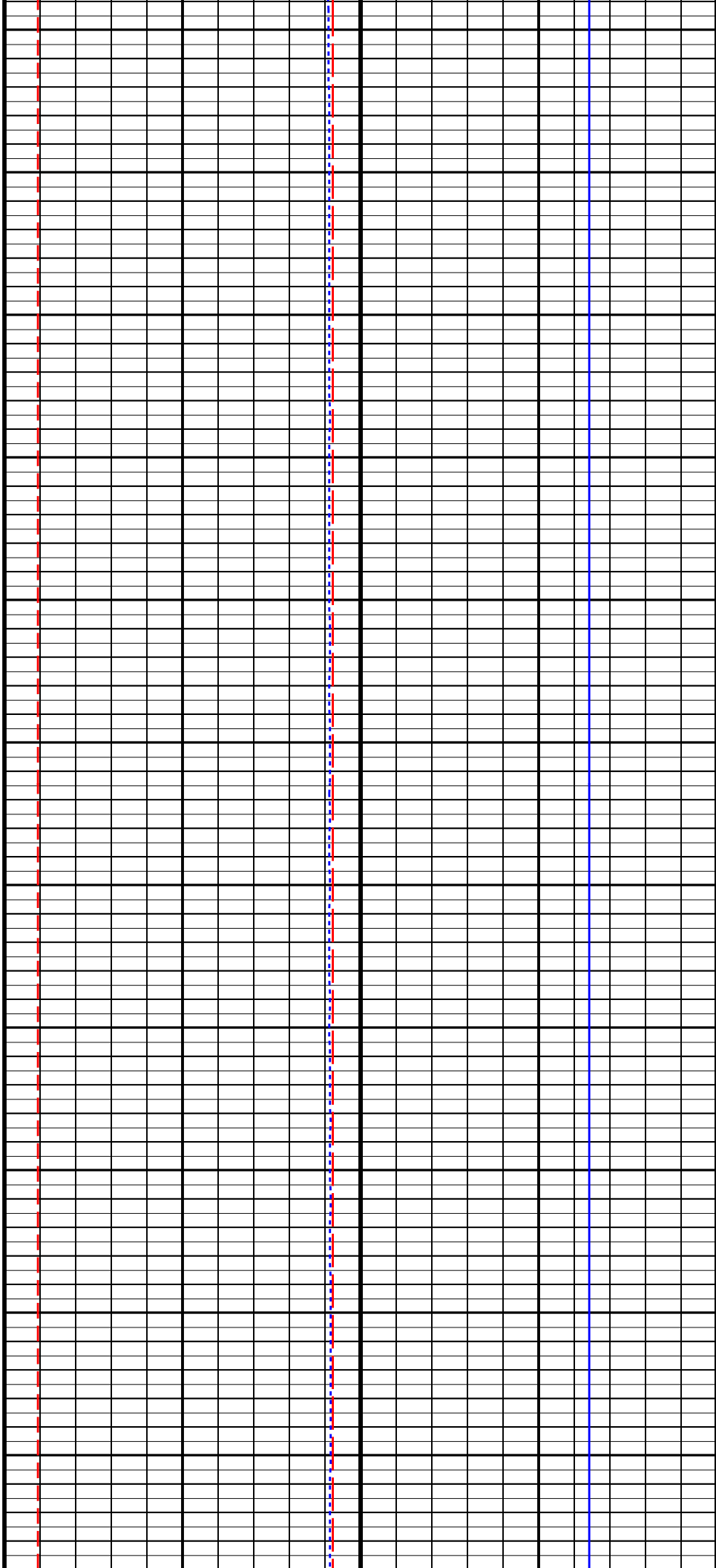
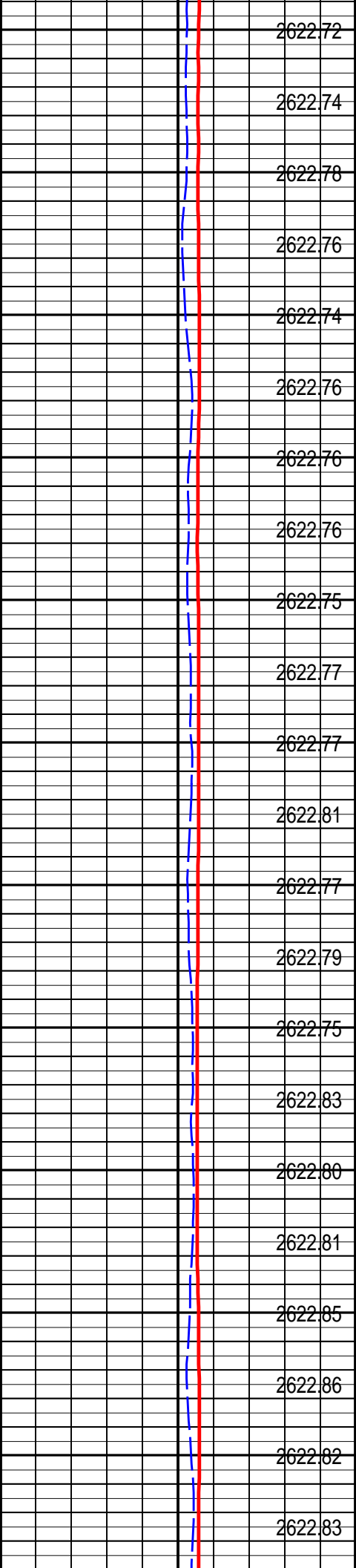
Well Temperature (WTEP_SL)		
(DEGF)		
0		200

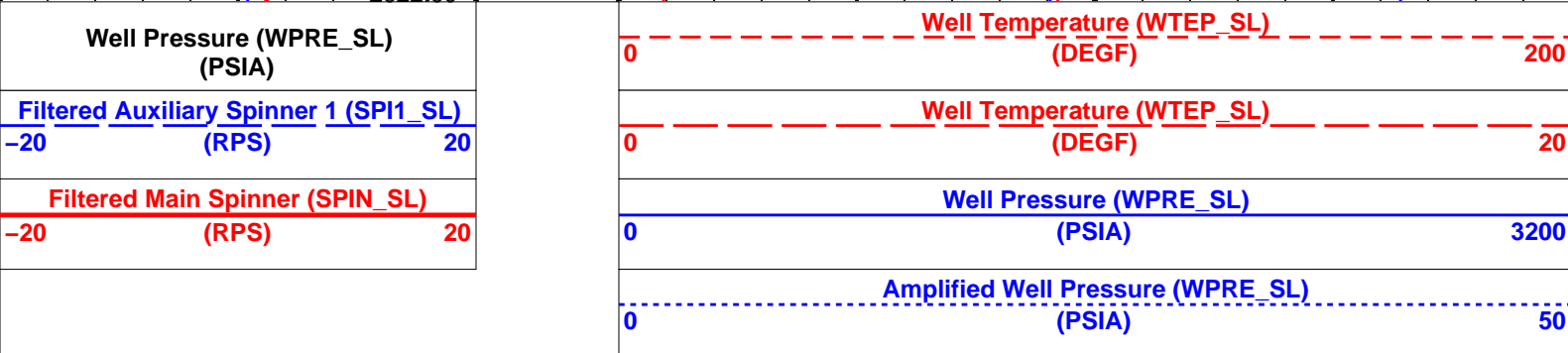
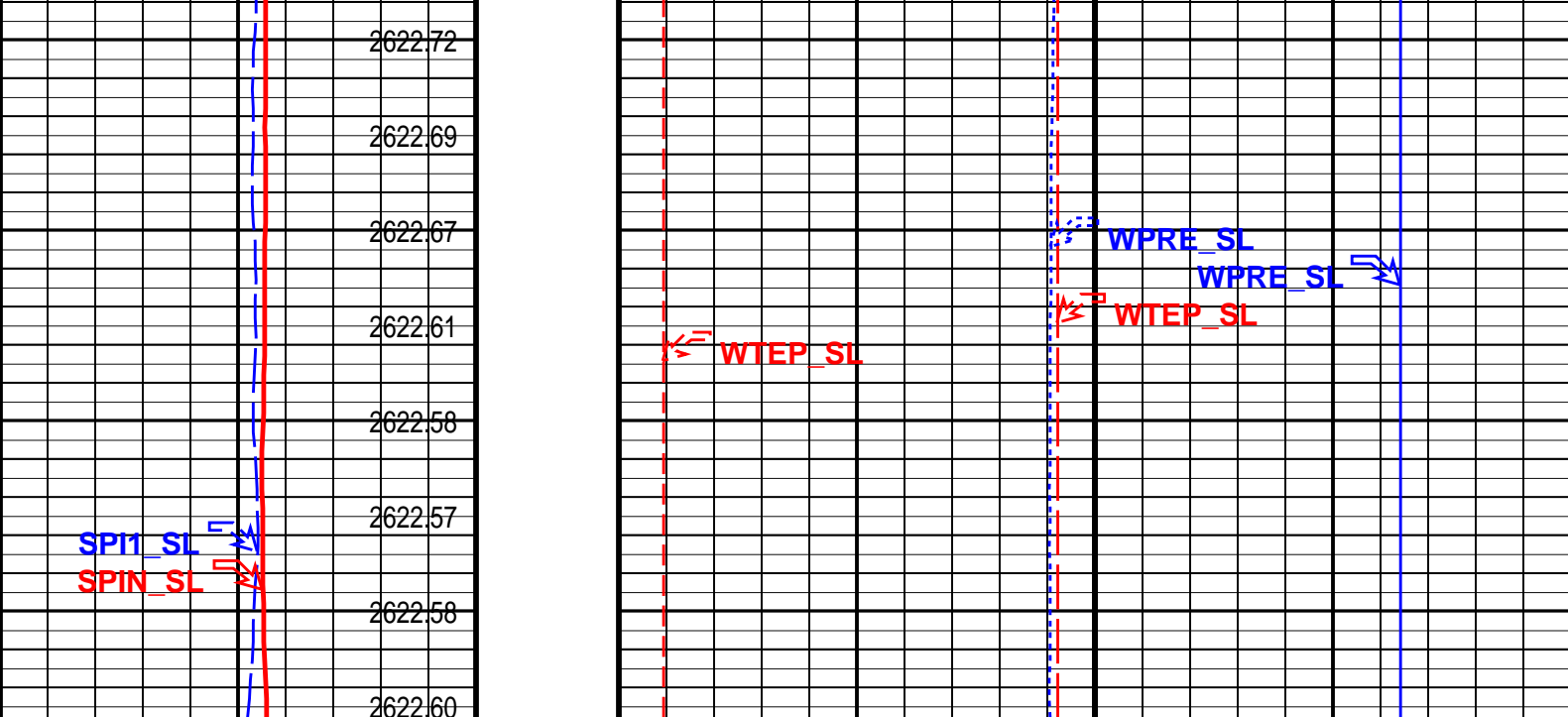












Format: PSP_station_1 Vertical Scale: 1" per 10S Graphics File Created: 07-May-2006 05:17

OP System Version: 14C0-302

MCM

PFCS-A 14C0-302 PILS-A 14C0-302
PSPT-A/B 14C0-302

Parameters

DLIS Name	Description	Value
PFCS-A: PSP Flow and caliper Tool		
AMOD	Spinner Filter Averaging Mode	LINEAR_AVERAGE
SDCF	Spinner Depth Constant Filter	6
SPI1	Auxiliary Spinner 1 Flowmeter Sonde	PILS-A
SPIN	Main Spinner Flowmeter Sonde	PFCS-A_3.5
PILS-A: PSP In Line Spinner Flowmeter		
AMOD	Spinner Filter Averaging Mode	LINEAR_AVERAGE
SDCF	Spinner Depth Constant Filter	6
SPI1	Auxiliary Spinner 1 Flowmeter Sonde	PILS-A
SPIN	Main Spinner Flowmeter Sonde	PFCS-A_3.5

Output DLIS Files

DEFAULT	FCS_ILS_PSP_023LTP	FN:36	PRODUCER	07-May-2006 05:17
PSP_SPIN	FCS_ILS_PSP_023LTC	FN:37	CUSTOMER	07-May-2006 05:17



Station Log at 4000m MDKB
Well Shut In

Input DLIS Files						
DEFAULT	FCS_ILS_PSP_017LTP	FN:24	PRODUCER	07-May-2006 04:23	3998.6 M	1.9 M

Output DLIS Files						
DEFAULT	FCS_ILS_PSP_019PTP	FN:28	PRODUCER	07-May-2006 04:37	3998.6 M	1.9 M
PSP_SPIN	FCS_ILS_PSP_019PTC	FN:29	CUSTOMER	07-May-2006 04:37	3998.6 M	1.9 M

OP System Version: 14C0-302
MCM

PFCS-A	14C0-302	PILS-A	14C0-302
PSPT-A/B	14C0-302		

		Amplified Well Pressure (WPRESL)	
	0	(PSIA)	50
Filtered Main Spinner (SPINSL)		Well Pressure (WPRESL)	
-20 (RPS) 20	0	(PSIA)	3200
Filtered Auxiliary Spinner 1 (SPI1SL)		Well Temperature (WTEPSL)	
-20 (RPS) 20	0	(DEGF)	20
Well Pressure (WPRESL) (PSIA)		Well Temperature (WTEPSL) (DEGF)	200

[illegible]

2653.81

2653.81

2653.81

2653.80

2653.81

2653.81

2653.81

2653.81

2653.81

2653.81

2653.81

2653.81

2653.81

2653.82

2653.82

2653.82

2653.82

2653.82

2653.82

2653.82

2653.82

2653.82

2653.81

2653.81

2653.81

2653.80

2653.81

2653.81

2653.81

2653.81

2653.81

2653.81

2653.81

2653.81

2653.81

2653.82

2653.82

2653.82

2653.82

2653.82

2653.82

2653.82

2653.82

2653.82

2653.82

2653.82

2653.82

2653.82

2653.82

2653.81

2653.82

2653.82

2653.82

2653.81

2653.81

2653.81

2653.81

2653.81

2653.81

2653.81

2653.81

2653.81

2653.82		

2653.82

2653.82		

2653.82		

2653.82

2653.82

2653.82

2653.82

2653.82

2653.81

2653.82

2653.82

2653.82

2653.81

2653.81

2653.81

2653.81

2653.81

2653.81

2653.81

2653.81

2653.81

2653.82		

2653.82

2653.82		

2653.82		

2653.82

2653.82

2653.82

2653.82

2653.82

2653.82

2653.82

2653.81

2653.82

2653.82

2653.82

2653.82

2653.82

2653.82

2653.83		

2653.82

2653.82		

2653	83	

2653.82		

2653	83
------	----

2653	83	

2653.83		
---------	--	--

2653.82

2653.82

2653.82

2653.82

2653.82

2653.82

2653.82

2653.81

2653.82

2653.82

2653.82

2653.82

2653.82

2653.82

2653.83		

2653.82

2653.82		

2653	83	

2653.82		

2653	83
------	----

2653	83	

2653.83		

2653.83

2653.83

2653.83

2653.82

2653.83

2653.83

2653.82

2653.83

2653.83

2653.83

2653.83

2653.82

2653.83		

2653.83

2653.83		

2653	83	

2653.83		

2653	83
------	----

2653	83	

2653	83
------	----

2	6	5
3	8	3

[illegible]

2653.83

2653.83

2653.83

2653.82

2653.83

2653.83

2653.82

2653.83

2653.83

2653.83

2653.83

2653.82

[illegible]

2653.83

2653.83		

2653	83	

2653.83		

2653	83
------	----

2653	83	

2653	83
------	----

2	6	5
3	8	3

[illegible]

2653.83

2653.83

2653.83

2653.83	
---------	--

2653.83

2653.83	
---------	--

2653.83

2653.83

2653.83

2653.83

2653.83

2653.83

2653.83

2653.83

2653.83

2653.83	
---------	--

2653.83

2653.84

2653.83

2653.83

2653.83

2653.83

2653.83

2653.83

2653.83

2653.83	
---------	--

2653.83

2653.83	
---------	--

2653.83

2653.83

2653.83

2653.83

2653.83

2653.83

2653.83

2653.83

2653.83

2653.83	
---------	--

2653.83

2653.84

2653.83

2653.83

2653.83

2653.83

2653.83

2653.84

2653.84

2653.84

2653.84

2653.84

2653.83

2653.83

2653.83

2653.84

2653.83

2653.84

2653.84

2653.84

2653.83

2653.84

2653.84

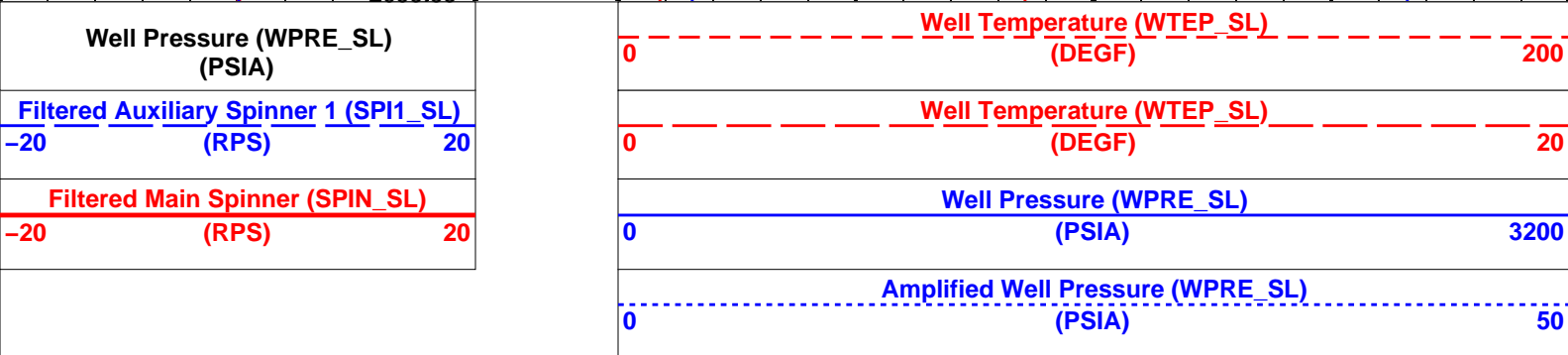
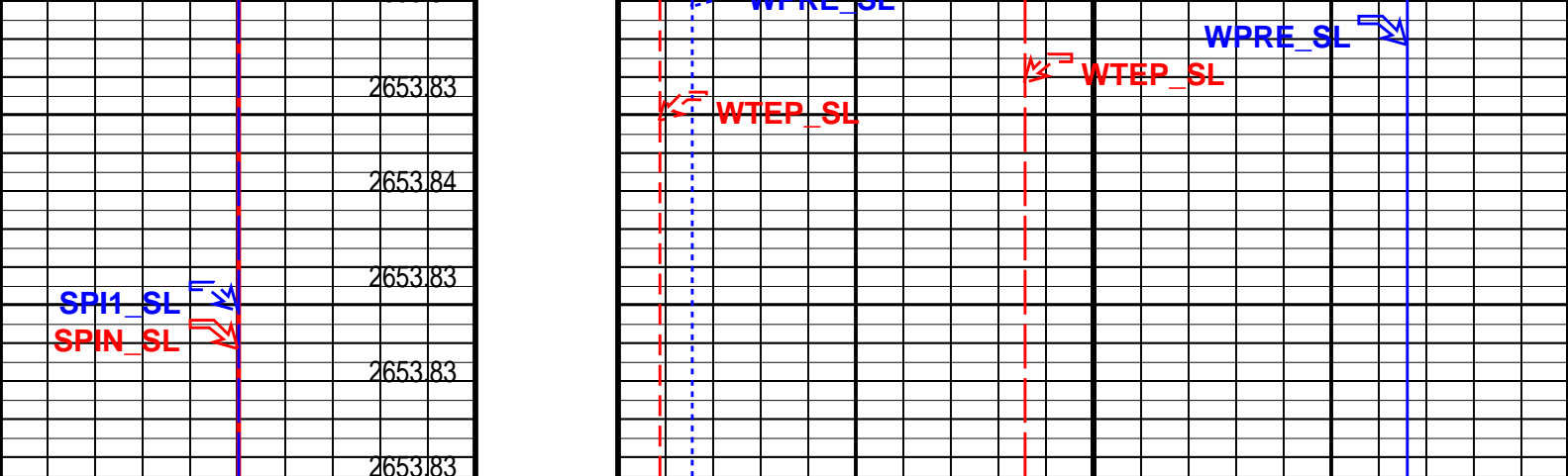
2653.83

2653.84

2653.83

2653.83

2653.84



Format: PSP_station_1 Vertical Scale: 1" per 10S Graphics File Created: 07-May-2006 04:37

OP System Version: 14C0-302
MCM

PFCs-A 14C0-302

PSPT-A/B 14C0-302

PILS-A 14C0-302

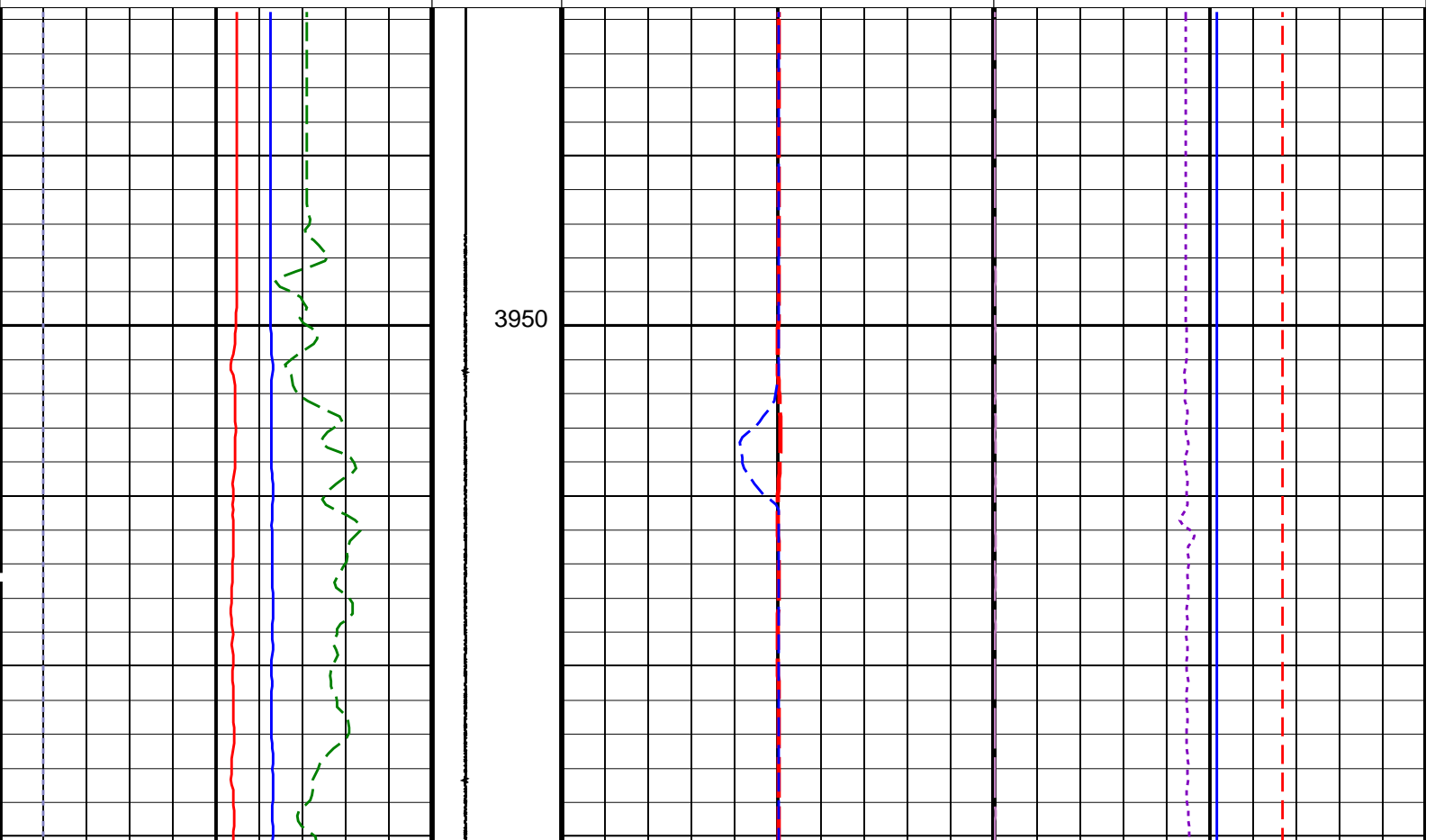
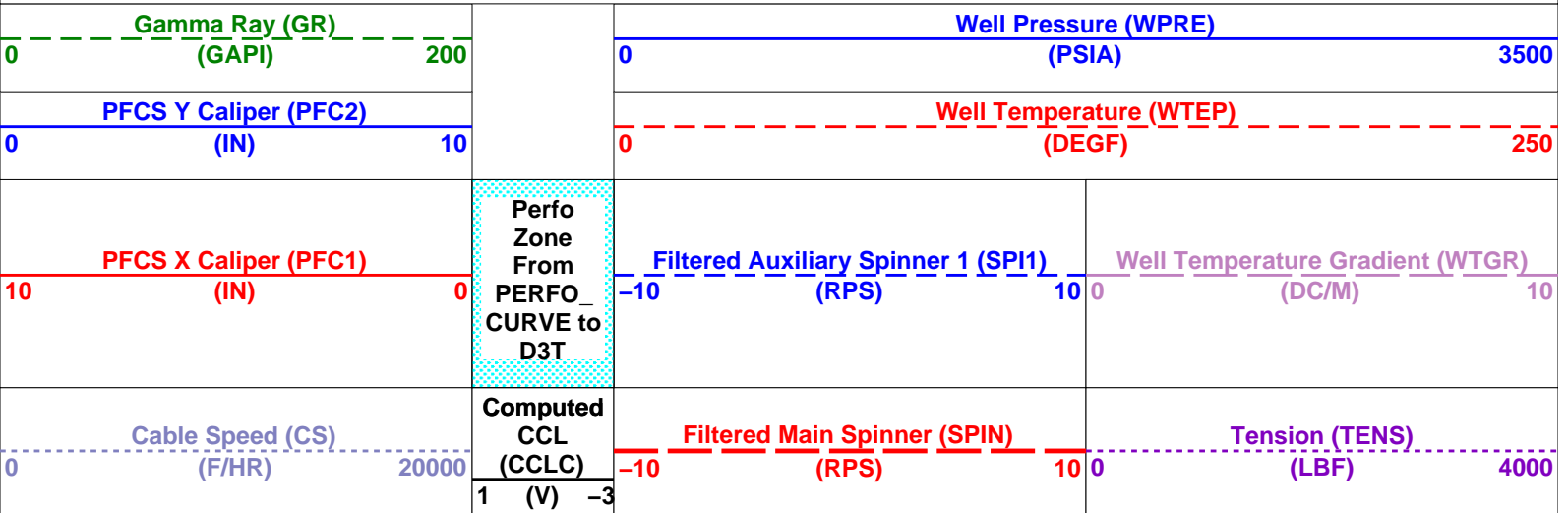
Parameters		
DLIS Name	Description	Value
PFCs-A: PSP Flow and caliper Tool		
AMOD	Spinner Filter Averaging Mode	LINEAR_AVERAGE
SDCF	Spinner Depth Constant Filter	6
SPI1	Auxiliary Spinner 1 Flowmeter Sonde	PILS-A
SPIN	Main Spinner Flowmeter Sonde	PFCs-A_3.5
PILS-A: PSP In Line Spinner Flowmeter		
AMOD	Spinner Filter Averaging Mode	LINEAR_AVERAGE
SDCF	Spinner Depth Constant Filter	6
SPI1	Auxiliary Spinner 1 Flowmeter Sonde	PILS-A
SPIN	Main Spinner Flowmeter Sonde	PFCs-A_3.5
System and Miscellaneous		
PP	Playback Processing	NORMAL

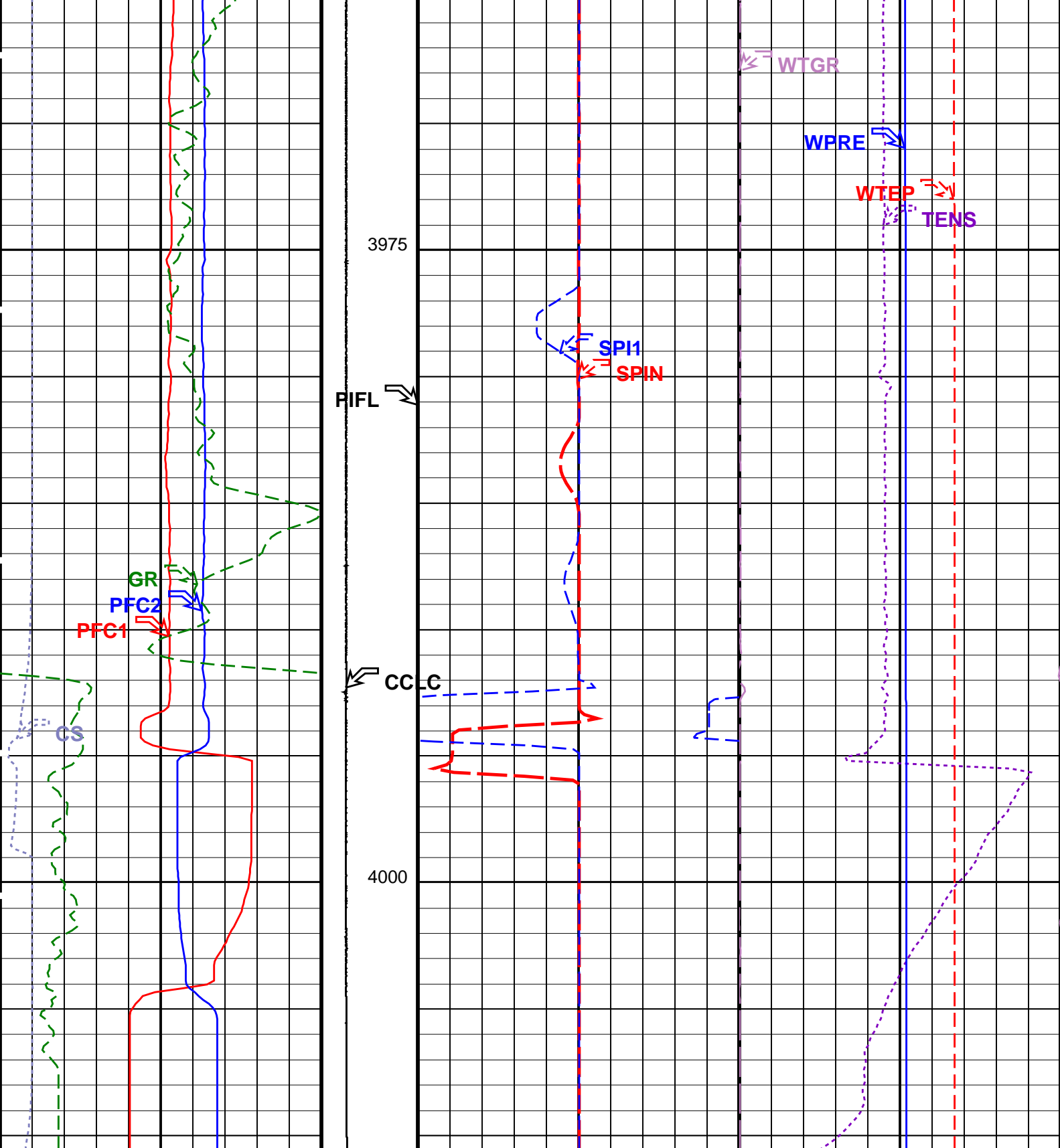
Input DLIS Files						
DEFAULT	FCS_ILS_PSP_017LTP	FN:24	PRODUCER	07-May-2006 04:23	3998.6 M	1.9 M
Output DLIS Files						
DEFAULT	FCS_ILS_PSP_019PTP	FN:28	PRODUCER	07-May-2006 04:37		
PSP_SPIN	FCS_ILS_PSP_019PTC	FN:29	CUSTOMER	07-May-2006 04:37		

Input DLIS Files						
DEFAULT	FCS_ILS_PSP_013LUP	FN:16	PRODUCER	07-May-2006 04:09	4010.7 M	3945.2 M
Output DLIS Files						
DEFAULT	FCS_ILS_PSP_014PUP	FN:18	PRODUCER	07-May-2006 04:19	4010.6 M	3940.6 M
PSP_SPIN	FCS_ILS_PSP_014PUC	FN:19	CUSTOMER	07-May-2006 04:20	4010.6 M	3940.6 M

PFCs-A	14C0-302	PILS-A	14C0-302
PSPT-A/B	14C0-302		

 Time Mark Every 60 S





<p>Cable Speed (CS) (F/HR)</p> <p>0 20000</p>	<p>Computed CCL (CCLC) (V) -3</p>	<p>Filtered Main Spinner (SPIN) (RPS)</p> <p>-10 10 0</p>	<p>Tension (TENS) (LBF)</p> <p>0 4000</p>
<p>PFC X Caliper (PFC1) (IN)</p> <p>10 0</p>	<p>Perfo Zone From PERFO_ CURVE to D3T</p>	<p>Filtered Auxiliary Spinner 1 (SPI1) (RPS)</p> <p>-10 10 0</p>	<p>Well Temperature Gradient (WTGR) (DC/M)</p> <p>0 10</p>
<p>PFC Y Caliper (PFC2)</p>			<p>Well Temperature (WTEP)</p>

0	(IN)	10	0	(DEGF)	250
0	Gamma Ray (GR) (GAPI)	200	0	Well Pressure (WPRE) (PSIA)	3500

PIP SUMMARY					
Time Mark Every 60 S					
Format: PSP_1 Vertical Scale: 1:200			Graphics File Created: 07-May-2006 04:20		

OP System Version: 14C0-302			
MCM			
PFCS-A	14C0-302	PILS-A	14C0-302
PSPT-A/B	14C0-302		

Parameters				
DLIS Name		Description	Value	
PFCS-A: PSP Flow and caliper Tool				
AMOD		Spinner Filter Averaging Mode	LINEAR_AVERAGE	
SDCF		Spinner Depth Constant Filter	6	
SPI1		Auxiliary Spinner 1 Flowmeter Sonde	PILS-A	
SPIN		Main Spinner Flowmeter Sonde	PFCS-A_3.5	
PILS-A: PSP In Line Spinner Flowmeter				
AMOD		Spinner Filter Averaging Mode	LINEAR_AVERAGE	
SDCF		Spinner Depth Constant Filter	6	
SPI1		Auxiliary Spinner 1 Flowmeter Sonde	PILS-A	
SPIN		Main Spinner Flowmeter Sonde	PFCS-A_3.5	
System and Miscellaneous				
DO		Depth Offset for Playback	-0.2	M
PP		Playback Processing	NORMAL	

Input DLIS Files					
DEFAULT	FCS_ILS_PSP_013LUP	FN:16	PRODUCER	07-May-2006 04:09	4010.7 M 3945.2 M
Output DLIS Files					
DEFAULT	FCS_ILS_PSP_014PUP	FN:18	PRODUCER	07-May-2006 04:19	
PSP_SPIN	FCS_ILS_PSP_014PUC	FN:19	CUSTOMER	07-May-2006 04:20	

Company:	Esso Australia Ltd	Schlumberger
Well:	A-25	
Field:	Bream A	
Rig:	Prod4/Crane	
Country:	Australia	
PSP / PLT Spinner Survey		