



DRILLING LOG



FROM : (mt) 520

TO : (mt) 3500

SCALE : 1/ 1000

Well Name : Halibut A-6A

Company : ESSO AUSTRALIA

Country : Australia

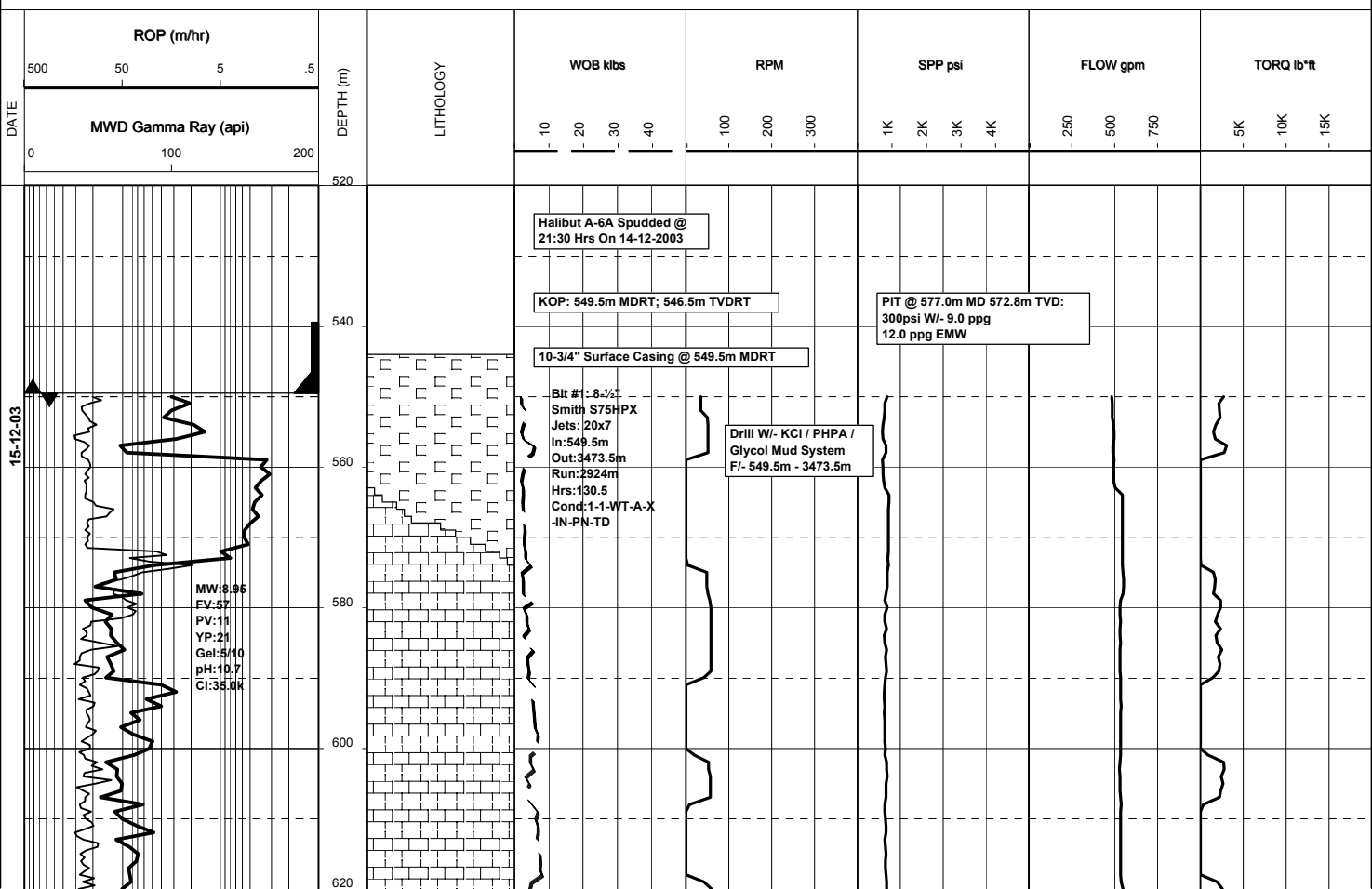
RT-MSL : 29.45 m

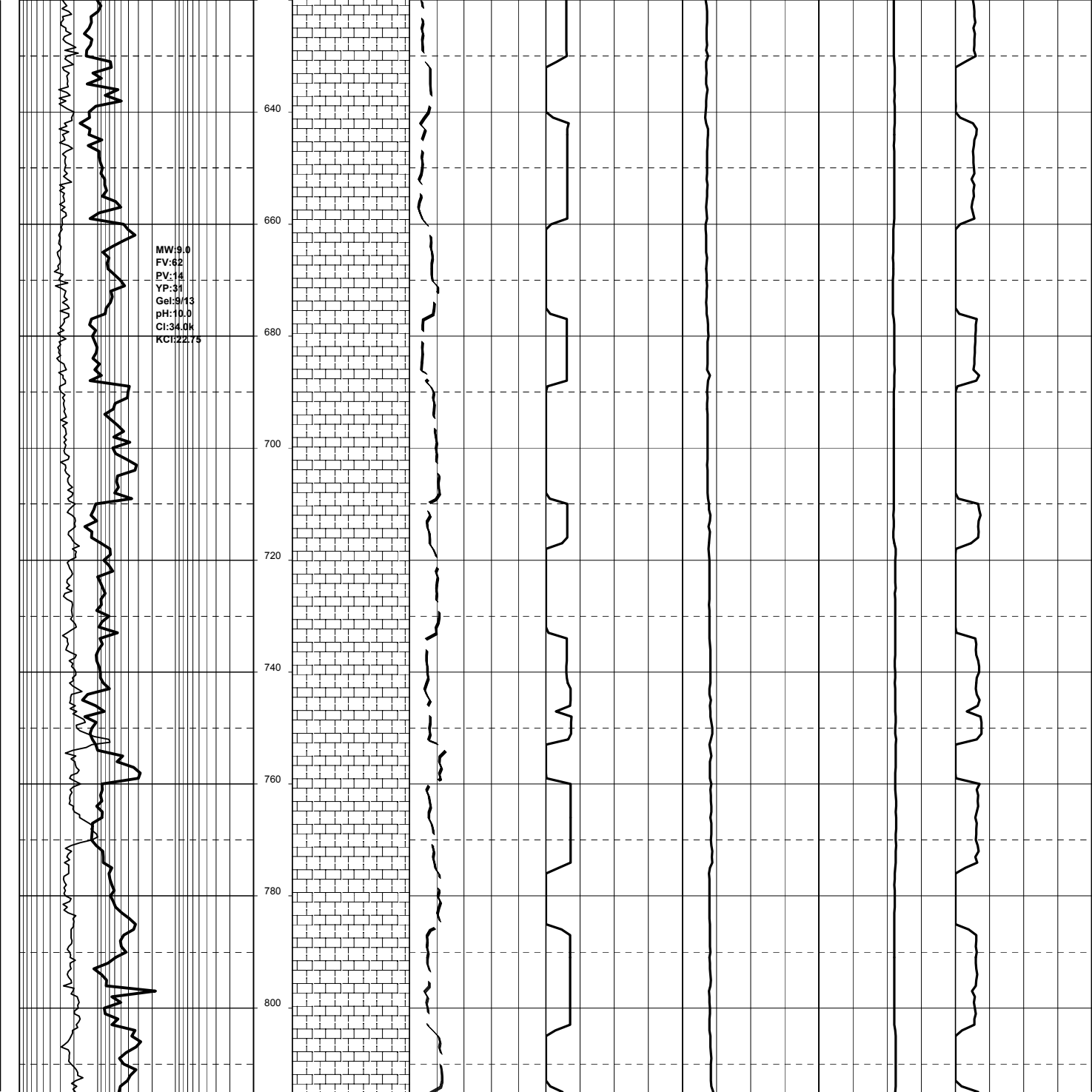
Final TD : 3473.5 m

RT-SEABED : 102.45m

Final TVD : 2456.7 m

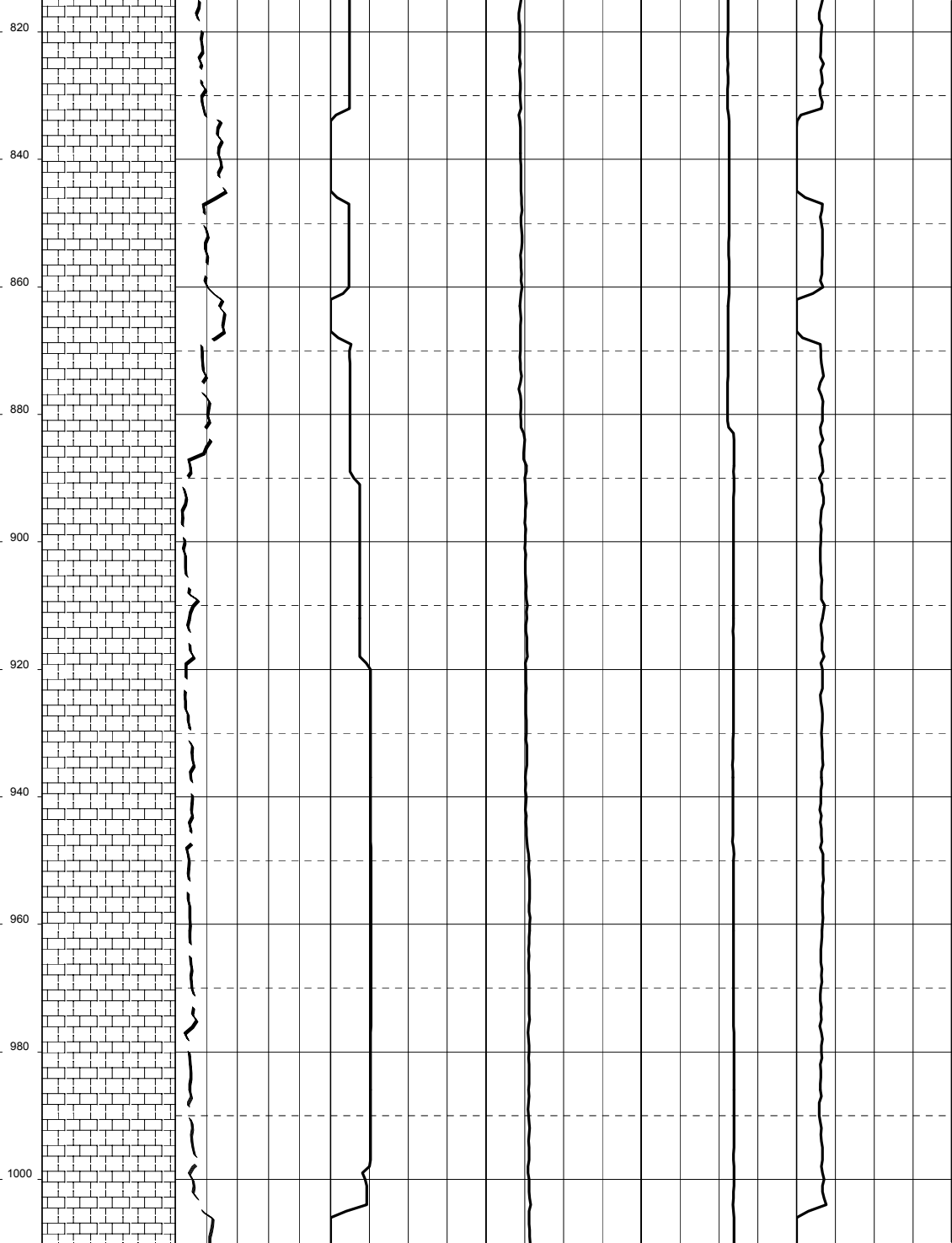
Generated by ALS Package





16-12-03

MW:9.05
FV:65
PV:18
YP:33
Gel:3/12
pH:9.2
Cl:35.0k
KCl:23.5



MW:9.10
FV:62
PV:17
YP:37
Gel:9/13
pH:9.0
Cl:34.5k
KCl:22.5ppg

MW:9.20
FV:64
PV:17

1020
1040
1060
1080
1100
1120
1140
1160
1180
1200

YP:39
Gel:9/13
pH:9.9
Cl:34.6k
KCl:22.5ppg

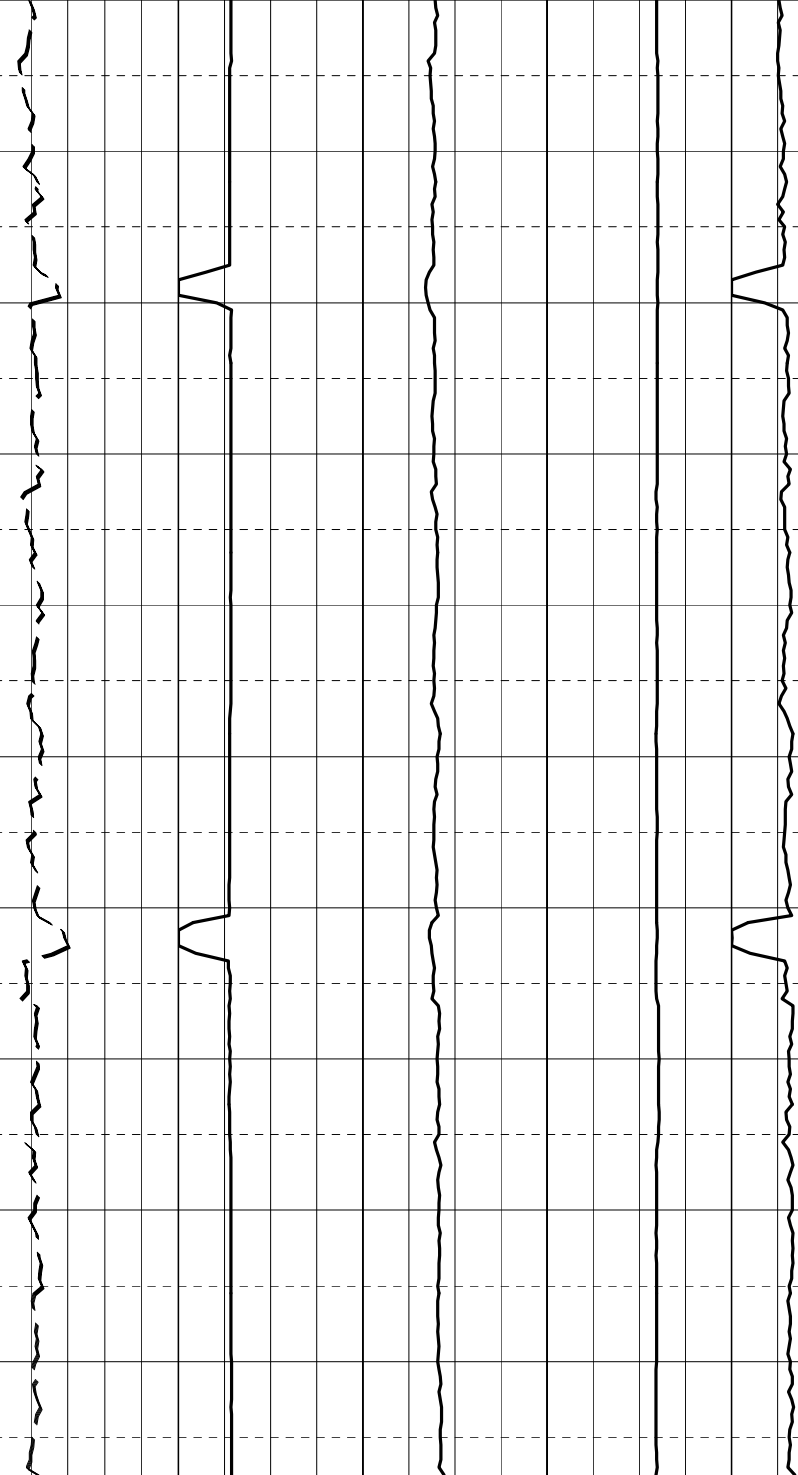
MW:9.20
FV:63
PV:17
YP:38
Gel:9/13
pH:8.8
Cl:35.0k
KCl:23.5ppg

1220
1240
1260
1280
1300
1320
1340
1360
1380
1400

17-12-03

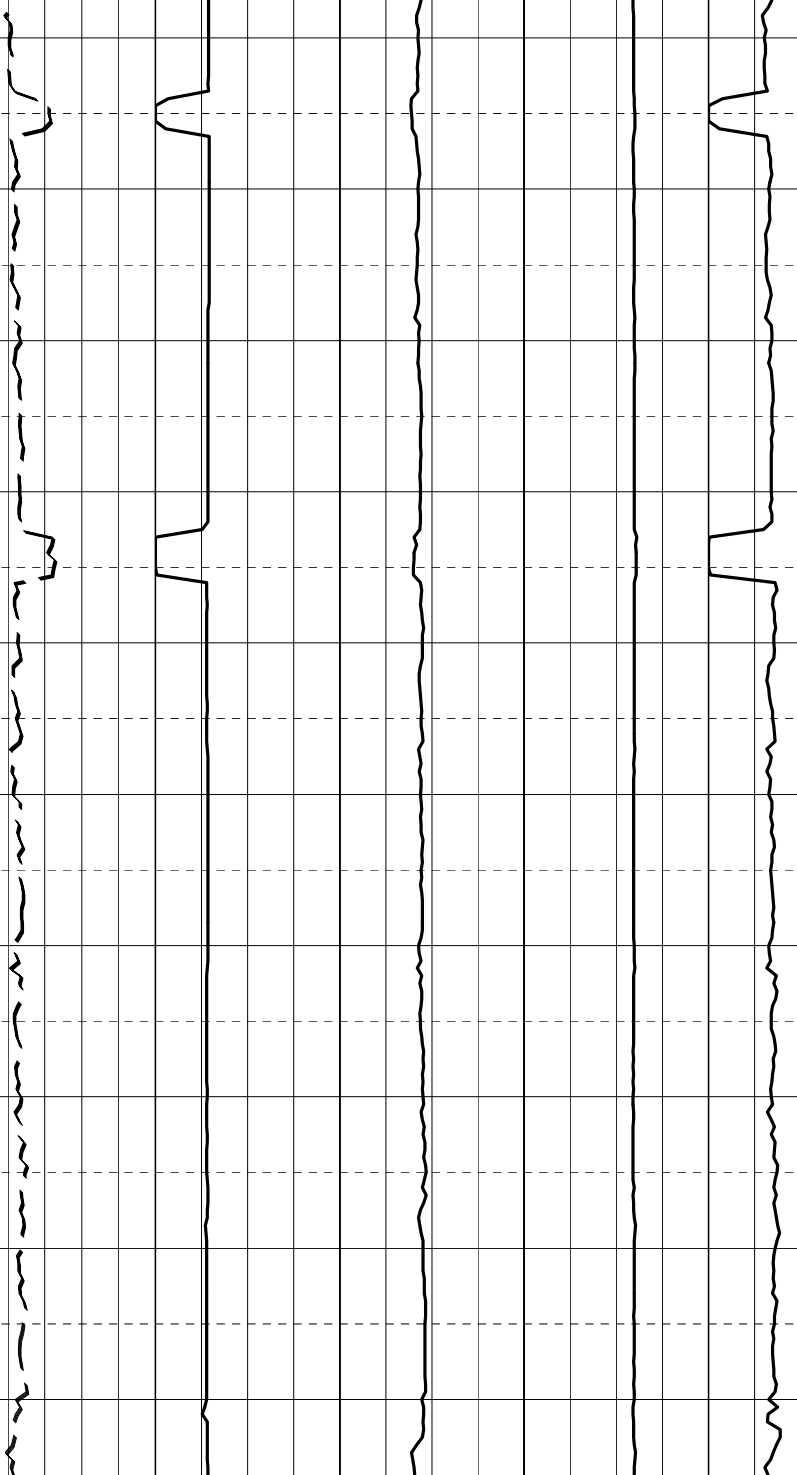
MW:9.20
FV:64
PV:17
YP:37
Gel:9/13
pH:8.8
Cl:36.0k
KCl:23.5ppg

1420
1440
1460
1480
1500
1520
1540
1560
1580



MW:9.25
FV:7.1
PV:20
YP:39
Gel:10/15
pH:8.9
GI:35.0
KCl:22.5ppg

1600
1620
1640
1660
1680
1700
1720
1740
1760
1780

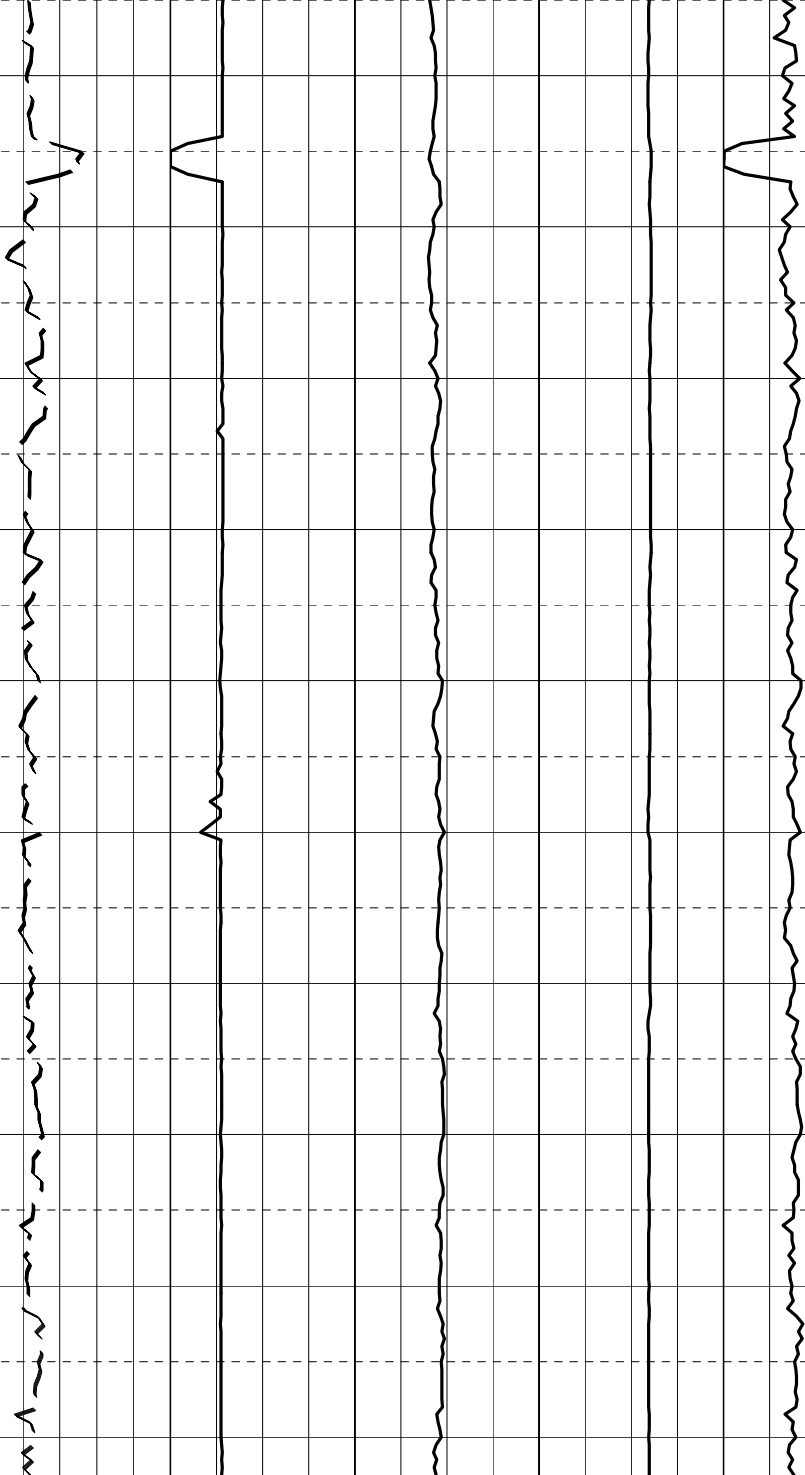


18-12-03

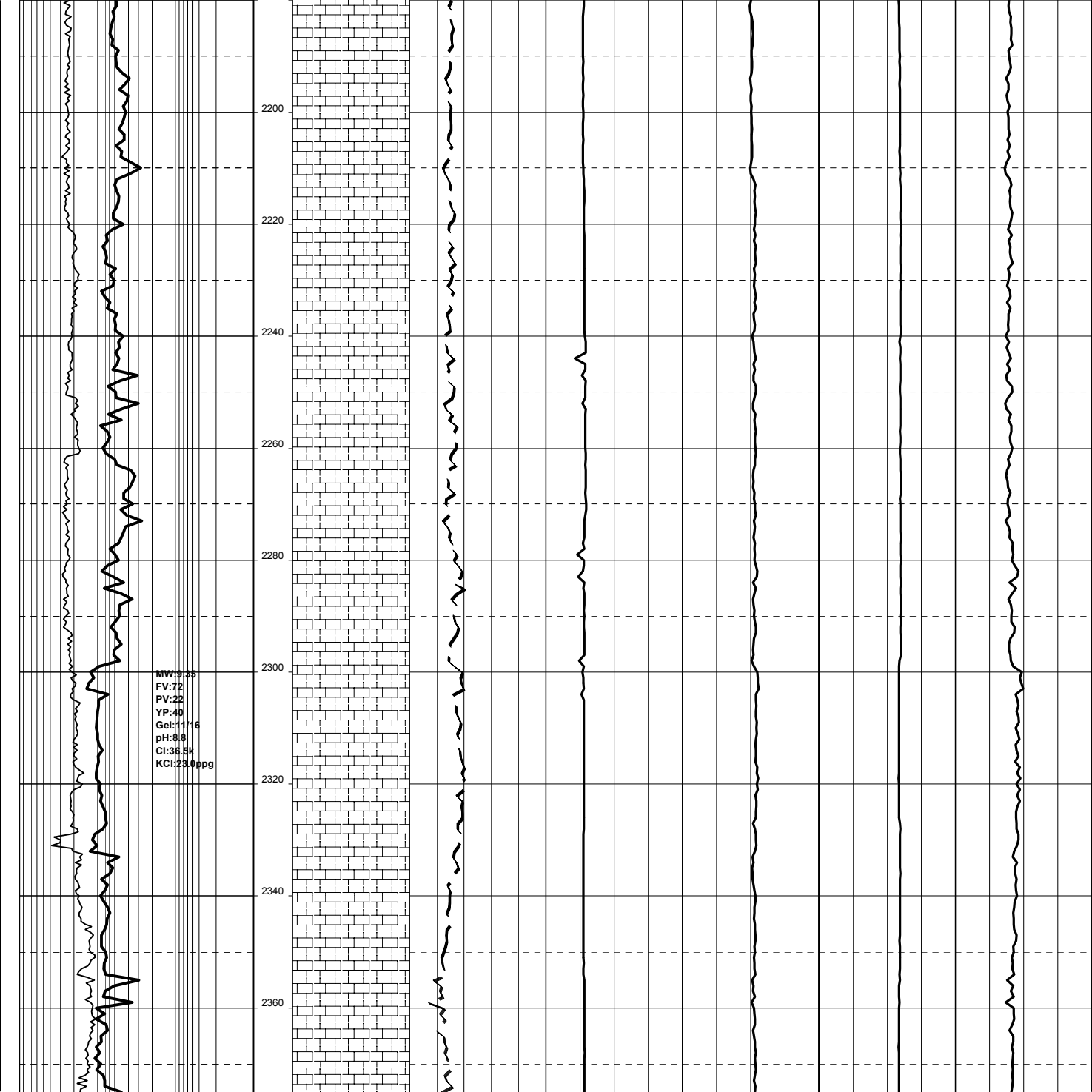
MW:9.25
EV:7.1
PV:20
YP:41
Gel:10/15
pH:8.8
Cl:38.0k
KCl:23.0ppg

MW:9.25
FV:7.2
PV:20
YP:40
Gel:10/16
pH:8.9
Cl:37.0k
KCl:23.0ppg

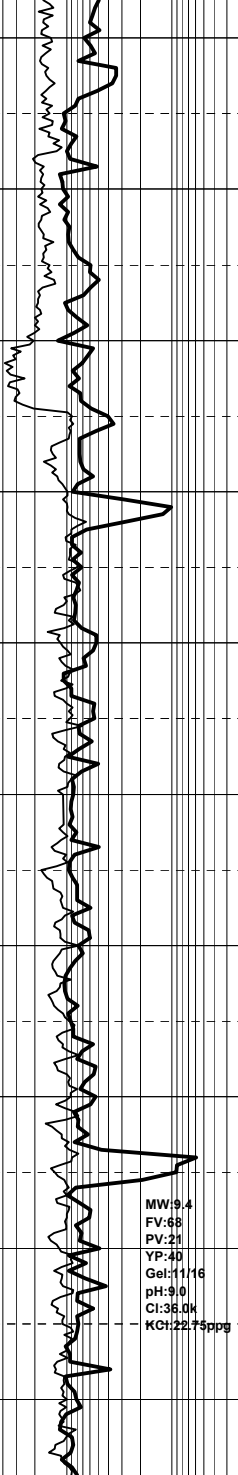
1800
1820
1840
1860
1880
1900
1920
1940
1960
1980





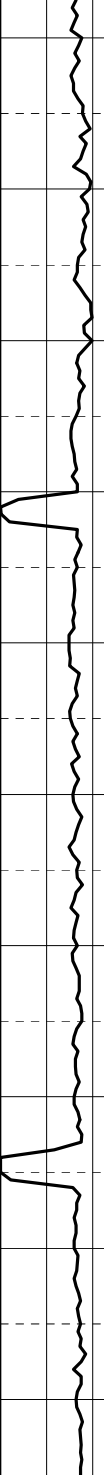
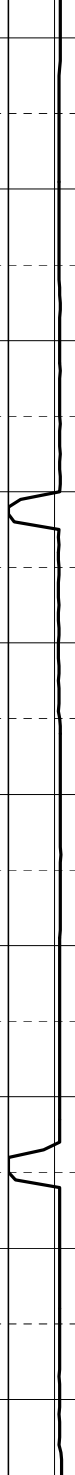
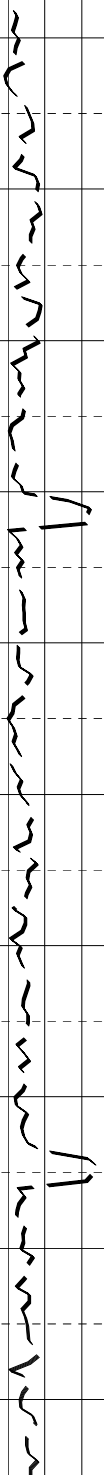


19-12-03



2380
2400
2420
2440
2460
2480
2500
2520
2540
2560

2
2
2
2
2



MW:9.4
FV:69
PV:22
YP:38
Gel:10/16
pH:8.9
Cl:35.6k
KCl:22.75ppg

MW:9.4
FV:67
PV:22
YP:40
Gel:11/18
pH:8.8
Cl:38.0k
KCl:23.5ppg

2580

2600

2620

2640

2660

2680

2700

2720

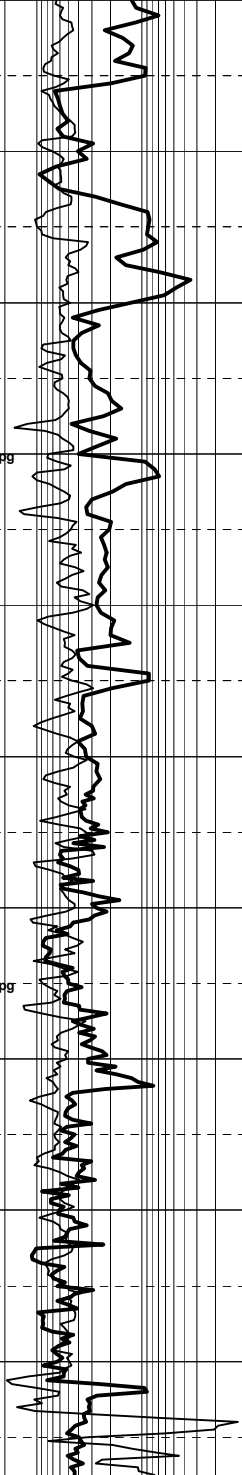
2740

2760

MW:9.4
FV:69
PV:21
YP:44
Gel:12/20
pH:8.8
Cl:38.0k
KCl:23.5ppg

MW:9.5	
FV:68	
PV:21	
YP:42	
Gel:11/19	
pH:8.8	
Cl:36.0k	
KCl:23.0ppg	

MW:9.5
FV:65
PV:21
YP:43
Gel:11/20
pH:8.8
Cl:38.0k
KCl:23.5ppm



3000

3020

3040

3060

3080

3100

3120

3140

MW:9.55
FV:72
PV:22
YP:41
Gel:11/20
pH:8.9
Cl:38.0k
KCl:23.0ppg



