

Company: Esso Australia PTY LTD.

Well: WFK W19a
Field: Bass Strait
Rig: 453 / Prod3

Country: Australia

Junk basket with 6" gauge ring
MAX-R setting record

453 / Prod3
Bass Strait
West Kingfish
WFK W19a
Esso Australia PTY LTD.

LOCATION			
West Kingfish		Elev.:	K.B. 33.4 m
Gippsland Basin			G.L. 76.1 m
Bass Strait			D.F. 33.4 m
Permanent Datum:	Mean sea level	Elev.:	0 m
Log Measured From:	Drill floor	33.4 m	above Perm. Datum
Drilling Measured From:	Rotary table		
State: Victoria	Max. Well Deviation 36 deg	Longitude E 148 6 19.318	Latitude S 38 35 34.833

Logging Date	14-Jul-2006		
Run Number	1		
Depth Driller	2682 m		
Schlumberger Depth	2686.5 m Tagged		
Bottom Log Interval	2582.1 m		
Top Log Interval	2582.1 m		
Casing Fluid Type	Brine		
Salinity			
Density	1 g/cm3		
Fluid Level	33.4 m		
BIT/CASING/TUBING STRING			
Bit Size	8.500 in		
From	76.1 m		
To	2682 m		
Casing/Tubing Size	7.000 in		
Weight	26 lbm/ft		
Grade	L-80		
From	0 m		
To	2682.2 m		
Maximum Recorded Temperatures			
Logger On Bottom	14-Jul-2006		9:00
Unit Number	41	AUSL	
Recorded By	Owen Darby		
Witnessed By	Glen Campbell		

PVT DATA				Run 1	Run 2	Run 3
Oil Density						
Water Salinity						
Gas Gravity						
Bo						
Bw						
1/Bg						
Bubble Point Pressure						
Bubble Point Temperature						
Solution GOR						
Maximum Deviation	36 deg					
CEMENTING DATA						
Primary/Squeeze	Primary					
Casing String No						
Lead Cement Type						
Volume						
Density						
Water Loss						
Additives						
Expected Cement Top						
Logging Date						
Run Number						
Depth Driller						
Schlumberger Depth						
Bottom Log Interval						
Top Log Interval						
Casing Fluid Type						
Salinity						
Density						
Fluid Level						
BIT/CASING/TUBING STRING						
Bit Size						
From						
To						
Casing/Tubing Size						
Weight						
Grade						
From						
To						
Maximum Recorded Temperatures						
Logger On Bottom						
Unit Number						
Recorded By						
Witnessed By						

DEPTH SUMMARY LISTING

Date Created: 14-JUN-2006 14:28:42

Depth System Equipment

Depth Measuring Device	Tension Device	Logging Cable
Type: IDW-H Serial Number: 796 Calibration Date: 9-Jun-2005 Calibrator Serial Number: 1009 Calibration Cable Type: 7-46ZV-XS Wheel Correction 1: -8 Wheel Correction 2: -9	Type: CMTD-B/A Serial Number: 1051 Calibration Date: 13/Jun/2006 Calibrator Serial Number: 1051 Calibration Gain: 1.00 Calibration Offset: 0.00	Type: 7-46ZV-XS Serial Number: 76075 Length: 7310.93 M Conveyance Method: Wireline Rig Type: Offshore_Fixed

Depth Control Parameters

Log Sequence:	Subsequent Trip To the Well
Reference Log Name:	Precision dual laterolog-GR-Density-Neutron
Reference Log Run Number:	1
Reference Log Date:	10-JUN-2006
Subsequent Trip Down Log Correction:	2.00 M

Depth Control Remarks

1. HUD was tagged at 2638.5m MDKB
2. Used IDW as primary depth control
3. Used Z-Chart as secondary depth control
4. Correlated to Precision dual laterolog - GR density- Neutron
5.
6.

DISCLAIMER

THE USE OF AND RELIANCE UPON THIS RECORDED-DATA BY THE HEREIN NAMED COMPANY (AND ANY OF ITS AFFILIATES, PARTNERS, REPRESENTATIVES, AGENTS, CONSULTANTS AND EMPLOYEES) IS SUBJECT TO THE TERMS AND CONDITIONS AGREED UPON BETWEEN SCHLUMBERGER AND THE COMPANY, INCLUDING: (a) RESTRICTIONS ON USE OF THE RECORDED-DATA; (b) DISCLAIMERS AND WAIVERS OF WARRANTIES AND REPRESENTATIONS REGARDING COMPANY'S USE OF AND RELIANCE UPON THE RECORDED-DATA; AND (c) CUSTOMER'S FULL AND SOLE RESPONSIBILITY FOR ANY INFERENCE DRAWN OR DECISION MADE IN CONNECTION WITH THE USE OF THIS RECORDED-DATA.

OTHER SERVICES1	OTHER SERVICES2
OS1: None	OS1:
OS2:	OS2:
OS3:	OS3:
OS4:	OS4:
OS5:	OS5:
REMARKS: RUN NUMBER 1	REMARKS: RUN NUMBER 2
Objective:	
RIH with a 6" gauge ring attached to the junk basket to ensure that the MAX-R can reach it's required depth.	
RIH with PGGT-D,CPST and MAX-R correlated to open hole log and set MAX-R at required depth.	
CCL to junk basket bottom = 2.45m	
CCL to top shot = 10.12m	

CCL to top shot = 10.42m					
CCL stop depth = 2582.1m					
Schlumberger crew:					
Operators = Kevin Kerr & Nathan Simmons (days)					
Gary martin, Luke Anderson (nights)					
Specialist = Owen Darby					
RUN 1			RUN 2		
SERVICE ORDER #:		13C0-300 33.4 m	SERVICE ORDER #:		
PROGRAM VERSION:			PROGRAM VERSION:		
FLUID LEVEL:			FLUID LEVEL:		
LOGGED INTERVAL	START	STOP	LOGGED INTERVAL	START	STOP
EQUIPMENT DESCRIPTION					
RUN 1			RUN 2		
SURFACE EQUIPMENT			SURFACE EQUIPMENT		
SHM-EA			WITM (SHM)		
DOWNHOLE EQUIPMENT			DOWNHOLE EQUIPMENT		

MAXIMUM STRING DIAMETER 5.75 IN
MEASUREMENTS RELATIVE TO TOOL ZERO
ALL LENGTHS IN METERS

Elevation: 33.4 m

Production String	(in)			(m)	Well Schematic	(m)	(in)			Casing String
	OD	ID	MD				MD	OD	ID	
						0.0	11.625	10.625		Borehole Segment Surface Casing String
						629.0	8.500	7.000		Borehole Segment Liner Hanger Casing String
						629.0	10.625	7.000		

Company: Esso Australia PTY LTD.

Well: WFK W19a

Output DLIS Files

DEFAULT

PERFO_046LUP

FN:44

PRODUCER

14-Jun-2006 12:16

2620.2 M

2548.7 M

OP System Version: 14C0-302

MCM

SHM_GUN

14C0-302

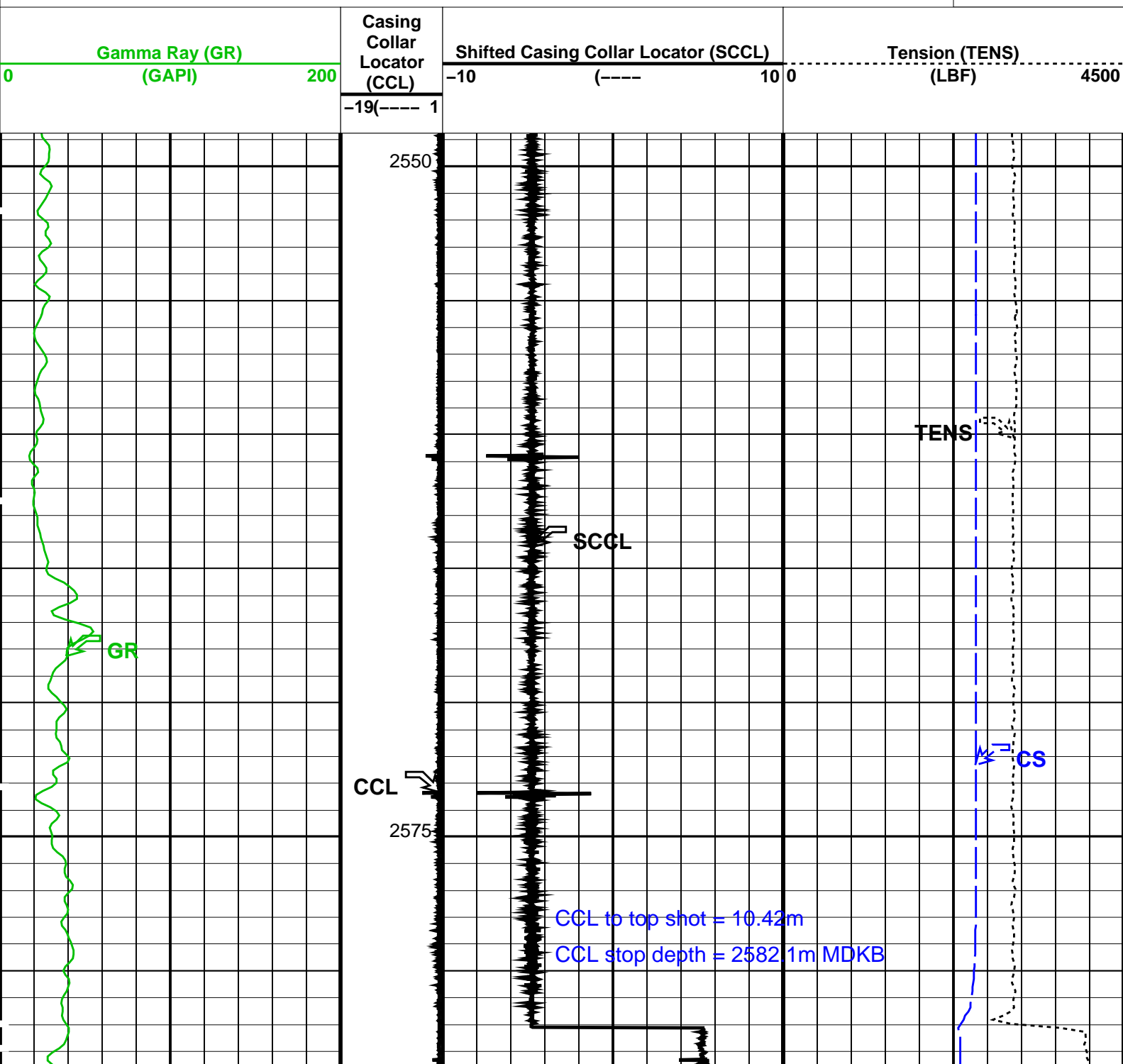
PGGT-D

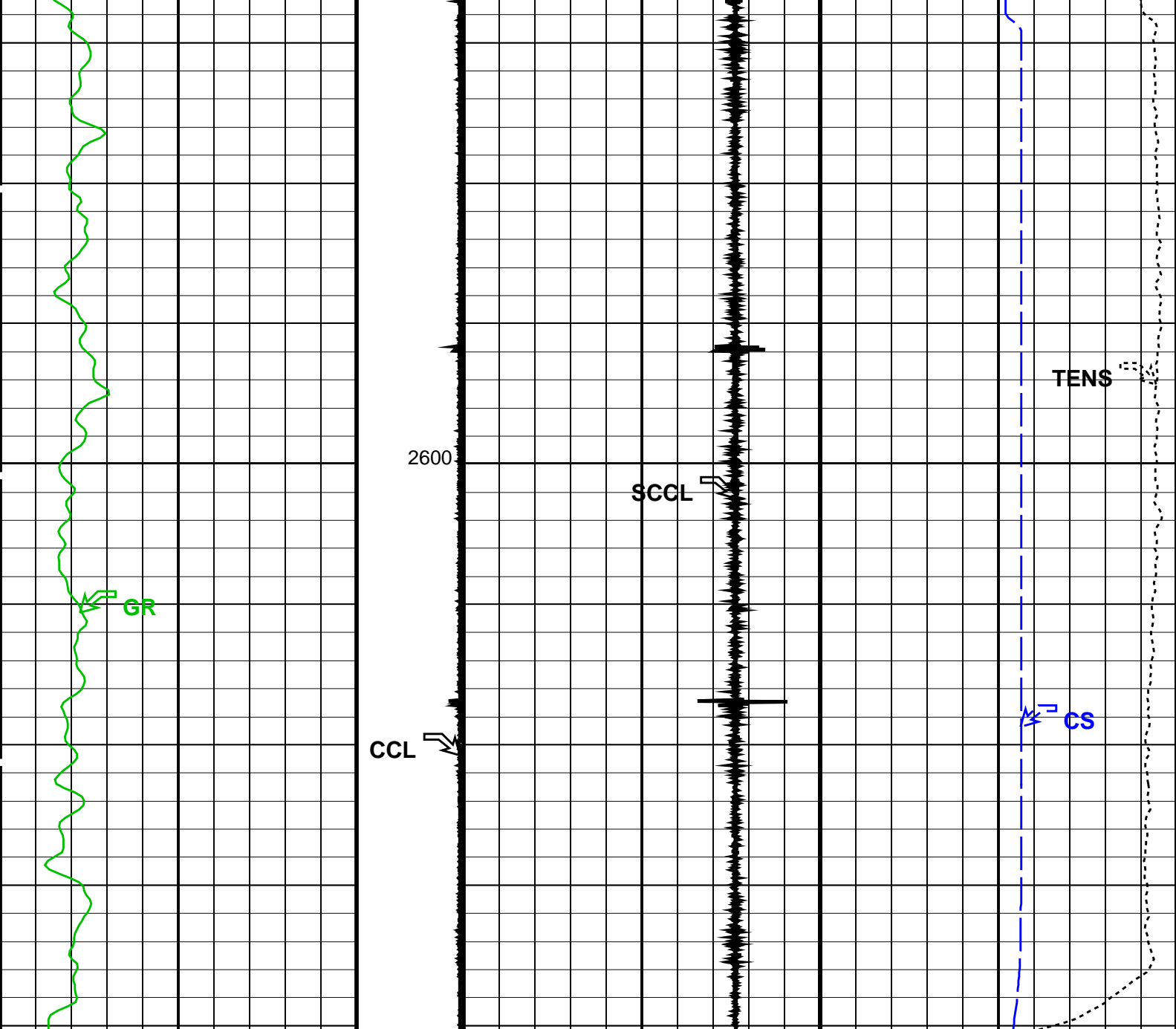
14C0-302

PIP SUMMARY

Time Mark Every 60 S

Cable Speed (CS)
0 (M/HR) 5000





Gamma Ray (GR) (GAPI) 200		Casing Collar Locator (CCL) -19(---- 1	Shifted Casing Collar Locator (SCCL) -10 (---- 10 0	Tension (TENS) (LBF) 4500
------------------------------	--	---	--	------------------------------

Cable Speed (CS)
0 (M/HR) 5000

PIP SUMMARY

Time Mark Every 60 S

Format: PERFO Vertical Scale: 1:200

Graphics File Created: 14-Jun-2006 12:16

OP System Version: 14C0-302
MCM

SHM_GUN

14C0-302

PGGT-D

14C0-302

Output DLIS Files

DEFAULT

PERFO_046LUP

FN:44

PRODUCER

14-Jun-2006 12:16

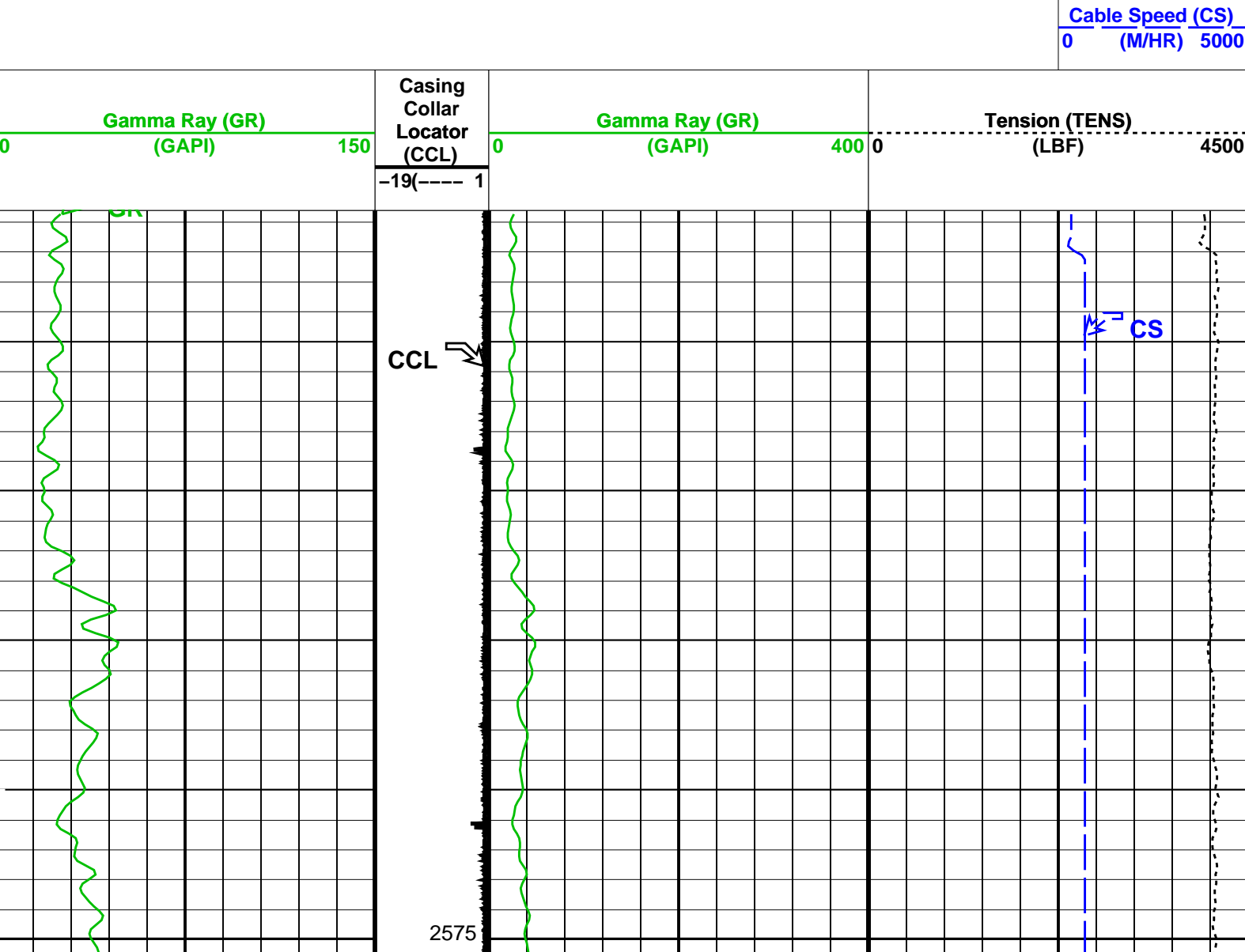
Company: Esso Australia PTY LTD. Well: WFK W19a

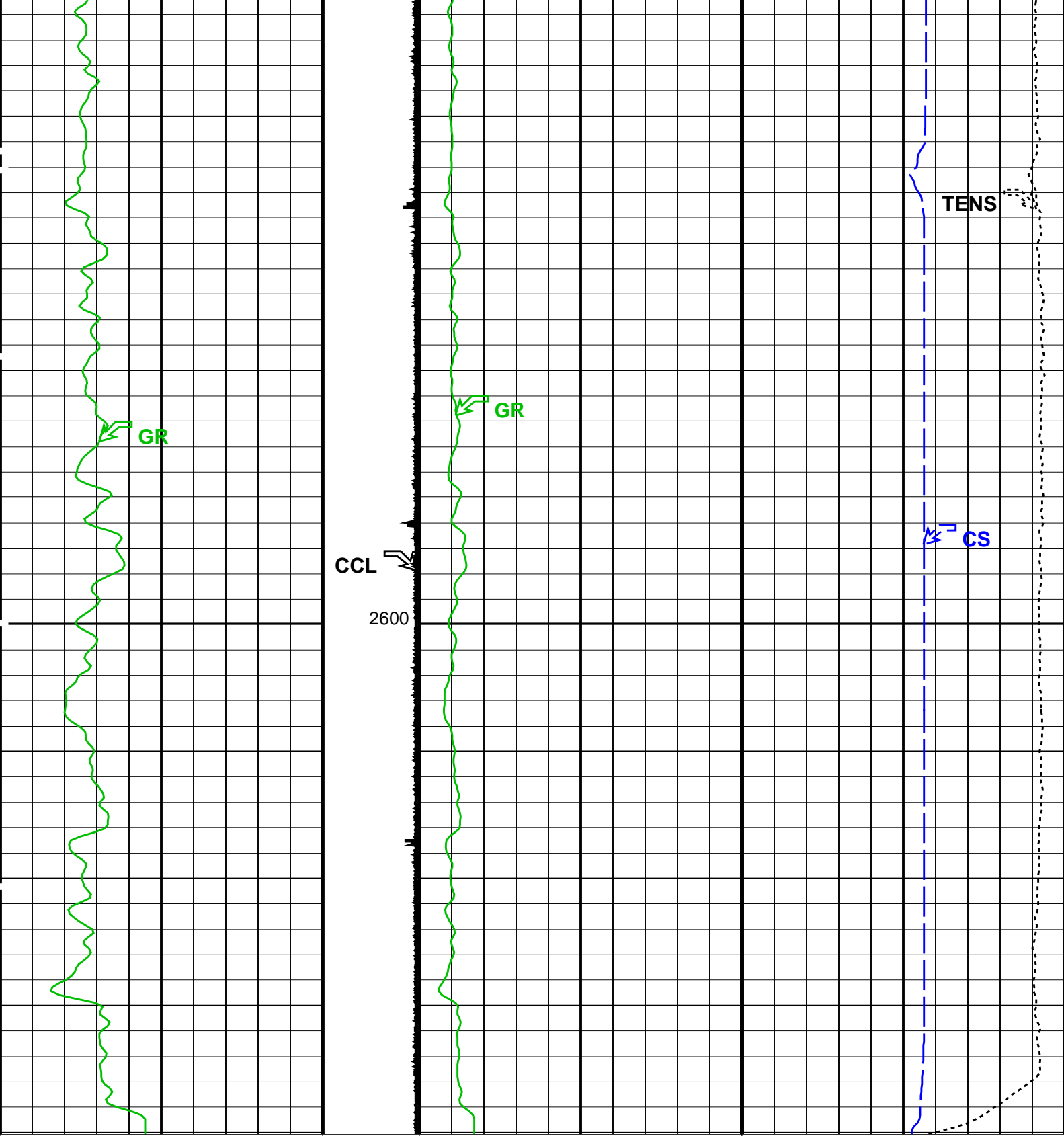
Input DLIS Files					
DEFAULT	PERFO_044LUP	FN:42	PRODUCER	14-Jun-2006 12:01	2619.9 M 2550.0 M
Output DLIS Files					
DEFAULT	PERFO_045PUP	FN:43	PRODUCER	14-Jun-2006 12:13	2620.1 M 2550.6 M

OP System Version: 14C0-302					
MCM					
SHM_GUN	14C0-302	PGGT-D	14C0-302		

PIP SUMMARY

Time Mark Every 60 S





Gamma Ray (GR) (GAPI)		150	Gamma Ray (GR) (GAPI)		400	Tension (TENS) (LBF)		4500
Casing Collar Locator (CCL)		-19(----- 1						

Cable Speed (CS) (M/HR)		5000
0		

PIP SUMMARY

Time Mark Every 60 S

Parameters




DLIS Name		Description			Value	
DO	System and Miscellaneous		0.2 M			
PP	Depth Offset for Playback		NORMAL			
		Playback Processing				
Format: PERFO_1		Vertical Scale: 1:200		Graphics File Created: 14-Jun-2006 12:13		
OP System Version: 14C0-302						
MCM						
SHM_GUN	14C0-302	PGGT-D		14C0-302		
Input DLIS Files						
DEFAULT	PERFO_044LUP	FN:42	PRODUCER	14-Jun-2006 12:01	2619.9 M	2550.0 M
Output DLIS Files						
DEFAULT	PERFO_045PUP	FN:43	PRODUCER	14-Jun-2006 12:13		

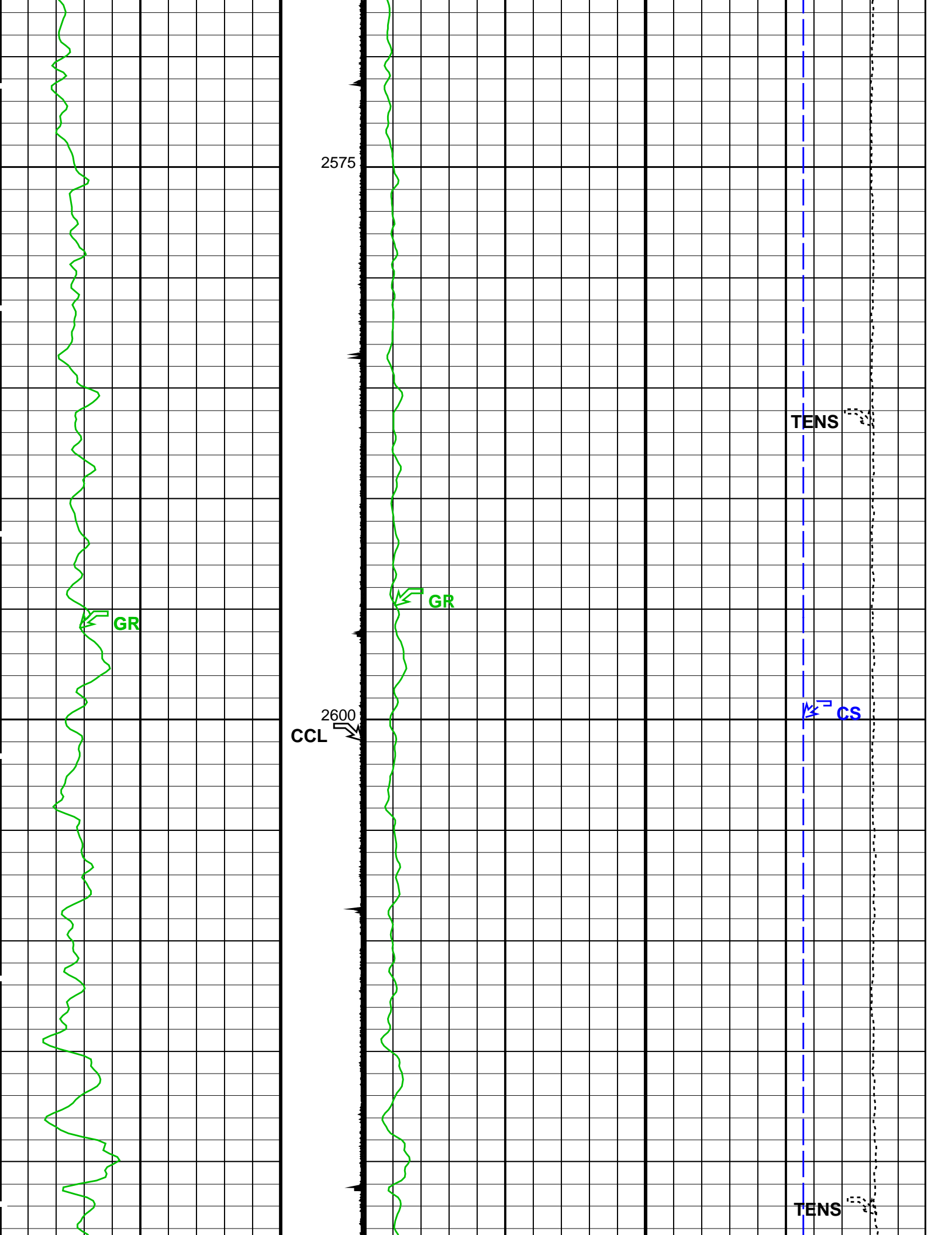


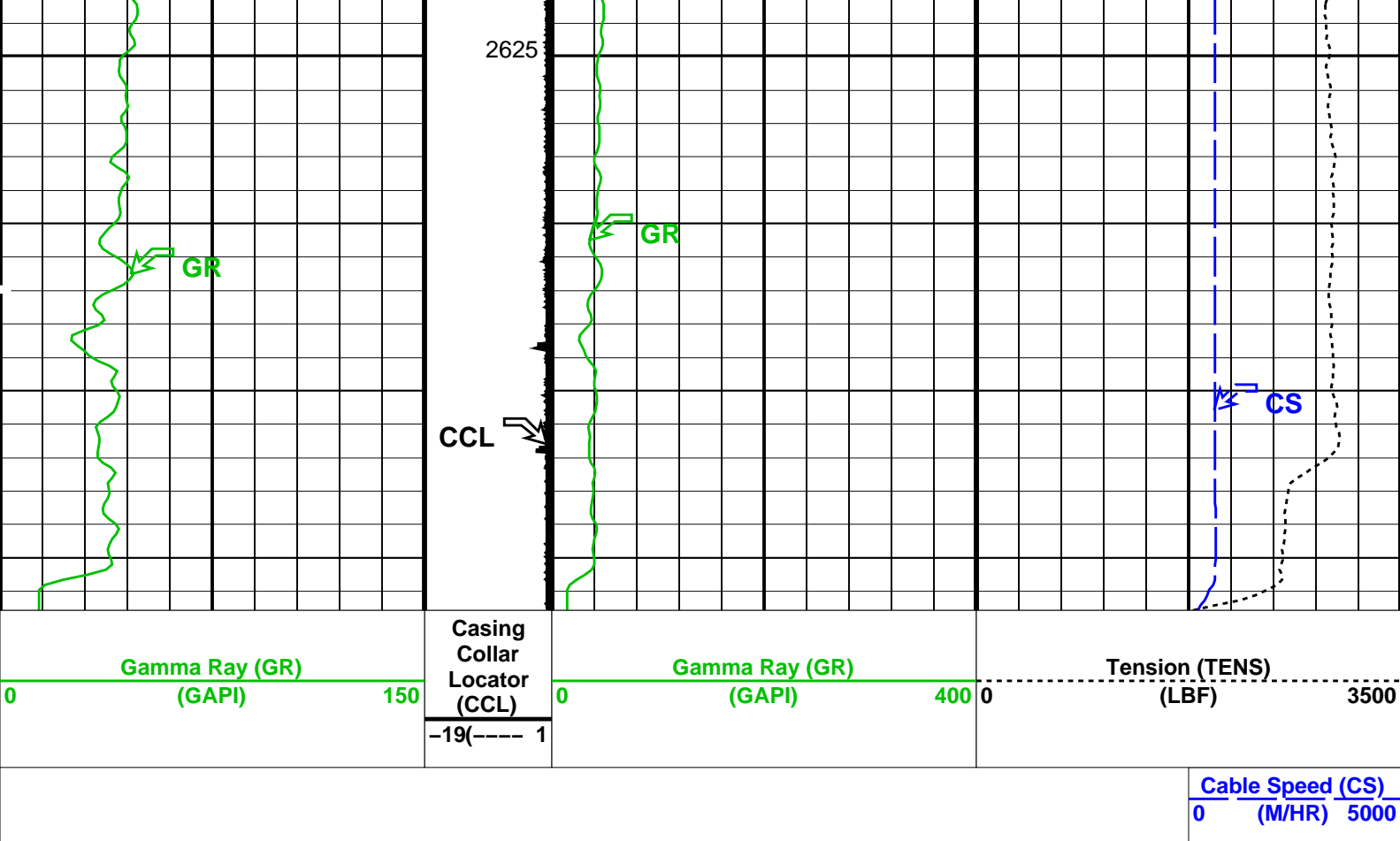
Junk Basket / Correlation

6" Gauge Ring

MAXIS Field Log

Company: Esso Australia PTY LTD.				Well: WFK W19a		
Input DLIS Files						
DEFAULT	PERFO_031LUP	FN:29	PRODUCER	14-Jun-2006 08:01	2641.4 M	2558.9 M
Output DLIS Files						
DEFAULT	PERFO_032PUP	FN:30	PRODUCER	14-Jun-2006 08:12	2641.5 M	2559.6 M
OP System Version: 14C0-302						
MCM						
SHM_GUN	14C0-302	PGGT-D		14C0-302		
PIP SUMMARY						
Time Mark Every 60 S					Cable Speed (CS) 0 (M/HR) 5000	
Gamma Ray (GR) (GAPI)		Casing Collar Locator (CCL)	Gamma Ray (GR) (GAPI)		Tension (TENS) (LBF)	
0150		-19----- 1	0400		03500	
						





PIP SUMMARY

Time Mark Every 60 S

Parameters

DLIS Name	Description	Value
DO PP	System and Miscellaneous Depth Offset for Playback Playback Processing	0.1 M RECOMPUTE

Format: PERFO_1 Vertical Scale: 1:200 Graphics File Created: 14-Jun-2006 08:12

OP System Version: 14C0-302
MCM

SHM_GUN 14C0-302 PGGT-D 14C0-302

Input DLIS Files

DEFAULT PERFO_031LUP FN:29 PRODUCER 14-Jun-2006 08:01 2641.4 M 2558.9 M

Output DLIS Files

DEFAULT PERFO_032PUP FN:30 PRODUCER 14-Jun-2006 08:12

Company: Esso Australia PTY LTD.

Schlumberger

Well: WFK W19a
Field: Bass Strait
Rig: 453 / Prod3
State: Victoria

Junk basket with 6" gauge ring
MAY R setting record

