

Company: Esso Australia Pty Ltd

Well: CBA F4

Field: Cobia

Rig: Rig 22

Country: Australia

3.65" Powercutter
Tubing Cut Record
07-Nov-2007

Rig: Rig 22
Field: Cobia
Location: Gippsland
Well: CBA F4
Company: Esso Australia Pty Ltd

LOCATION			
Gippsland		Elev.:	K.B. 32.4 m
Basin			G.L. -79 m
Bass Strait			D.F. 32.4 m
Permanent Datum:	MSL	Elev.:	0 m
Log Measured From:	DF	32.4 m	above Perm. Datum
Drilling Measured From:	DF		
State: Victoria	Max. Well Deviation 55 deg	Longitude 148° 18' 28.3" E	Latitude 38° 27' 03.5" S

Logging Date	5-Nov-2007			
Run Number	1			
Depth Driller	3656 m			
Schlumberger Depth	3382.7 m			
Bottom Log Interval	3378.4 m			
Top Log Interval	3378.4 m			
Casing Fluid Type	Sea water			
Salinity				
Density	1.02 g/cm3			
Fluid Level				
BIT/CASING/TUBING STRING				
Bit Size	7.625 in			
From	12.53 m			
To	3606 m			
Casing/Tubing Size	4.500 in			
Weight	26.4 lbm/ft			
Grade	J-55			
From	3373.54 m			
To	3546.2 m			
Maximum Recorded Temperatures				
Logger On Bottom	7-Nov-2007		17:30	
Unit Number	3827	AUSL		
Recorded By	C. Rowand, M. Pratt			
Witnessed By	Mr B. Robinson, Mr J. Dean			

PVT DATA		Run 1	Run 2	Run 3
Oil Density				
Water Salinity				
Gas Gravity				
Bo				
Bw				
1/Bg				
Bubble Point Pressure				
Bubble Point Temperature				
Solution GOR				
Maximum Deviation	55 deg			
CEMENTING DATA				
Primary/Squeeze	Primary			
Casing String No				
Lead Cement Type				
Volume				
Density				
Water Loss				
Additives				
Tail Cement Type				
Volume				
Density				
Water Loss				
Additives				
Expected Cement Top				
Logging Date				
Run Number				
Depth Driller				
Schlumberger Depth				
Bottom Log Interval				
Top Log Interval				
Casing Fluid Type				
Salinity				
Density				
Fluid Level				
BIT/CASING/TUBING STRING				
Bit Size				
From				
To				
Casing/Tubing Size				
Weight				
Grade				
From				
To				
Maximum Recorded Temperatures				
Logger On Bottom				
Unit Number				
Recorded By				
Witnessed By				

DEPTH SUMMARY LISTING	
-----------------------	--

Date Created: 7-NOV-2007 15:14:03

Depth System Equipment

Depth Measuring Device		Tension Device		Logging Cable	
Type:	IDW-E	Type:	CMTD-B/A	Type:	2-32ZT
Serial Number:	727	Serial Number:	1711	Serial Number:	24187
Calibration Date:	20-Sep-2007	Calibration Date:	25-Oct-2007	Length:	6270.04 M
Calibrator Serial Number:	727	Calibrator Serial Number:	1173		
Calibration Cable Type:	2-32ZT	Calibration Gain:	0.97	Conveyance Method:	Wireline
Wheel Correction 1:	-4	Calibration Offset:	-437.00	Rig Type:	Offshore_Fixed
Wheel Correction 2:	-3				

Depth Control Parameters					

Log Sequence:	Subsequent Log In the Well
Reference Log Name:	Tubing Tally
Reference Log Run Number:	Not provided
Reference Log Date:	29-Jun-2007

Depth Control Remarks	
-----------------------	--

- | |
|--|
| <ol style="list-style-type: none">1. IDW used as primary depth control2. Z Chart used as a secondary depth control3. Log correlated to Tubing Tally dated 29-Jun-20074.5.6. |
|--|

DISCLAIMER

THE USE OF AND RELIANCE UPON THIS RECORDED-DATA BY THE HEREIN NAMED COMPANY (AND ANY OF ITS AFFILIATES, PARTNERS, REPRESENTATIVES, AGENTS, CONSULTANTS AND EMPLOYEES) IS SUBJECT TO THE TERMS AND CONDITIONS AGREED UPON BETWEEN SCHLUMBERGER AND THE COMPANY, INCLUDING: (a) RESTRICTIONS ON USE OF THE RECORDED-DATA; (b) DISCLAIMERS AND WAIVERS OF WARRANTIES AND REPRESENTATIONS REGARDING COMPANY'S USE OF AND RELIANCE UPON THE RECORDED-DATA; AND (c) CUSTOMER'S FULL AND SOLE RESPONSIBILITY FOR ANY INFERENCE DRAWN OR DECISION MADE IN CONNECTION WITH THE USE OF THIS RECORDED-DATA.

OTHER SERVICES1	OTHER SERVICES2
OS1: None	OS1:
OS2:	OS2:
OS3:	OS3:
OS4:	OS4:
OS5:	OS5:

REMARKS: RUN NUMBER 1	REMARKS: RUN NUMBER 2
-----------------------	-----------------------

Log correlated to Tubing Tally, provided by client.

Objective: RIH with a 3.65" Powercutter and cut the 4.5" Tubing at 3378.4m MDKB.

Secure Initiated







Powercutter:

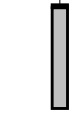


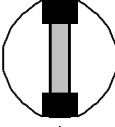
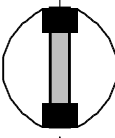
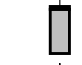

CCL to Top Shot: 2.61m
CCL Stop Depth: 3375.79m MDKB

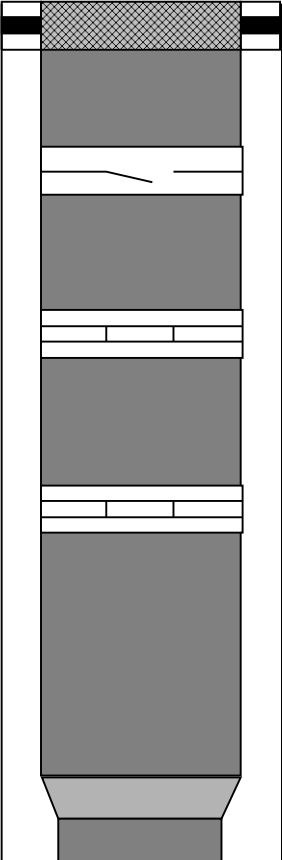
Crew: (Days) G. Brady & P. Battems
(Nights) D. Stucky & S. Kiss

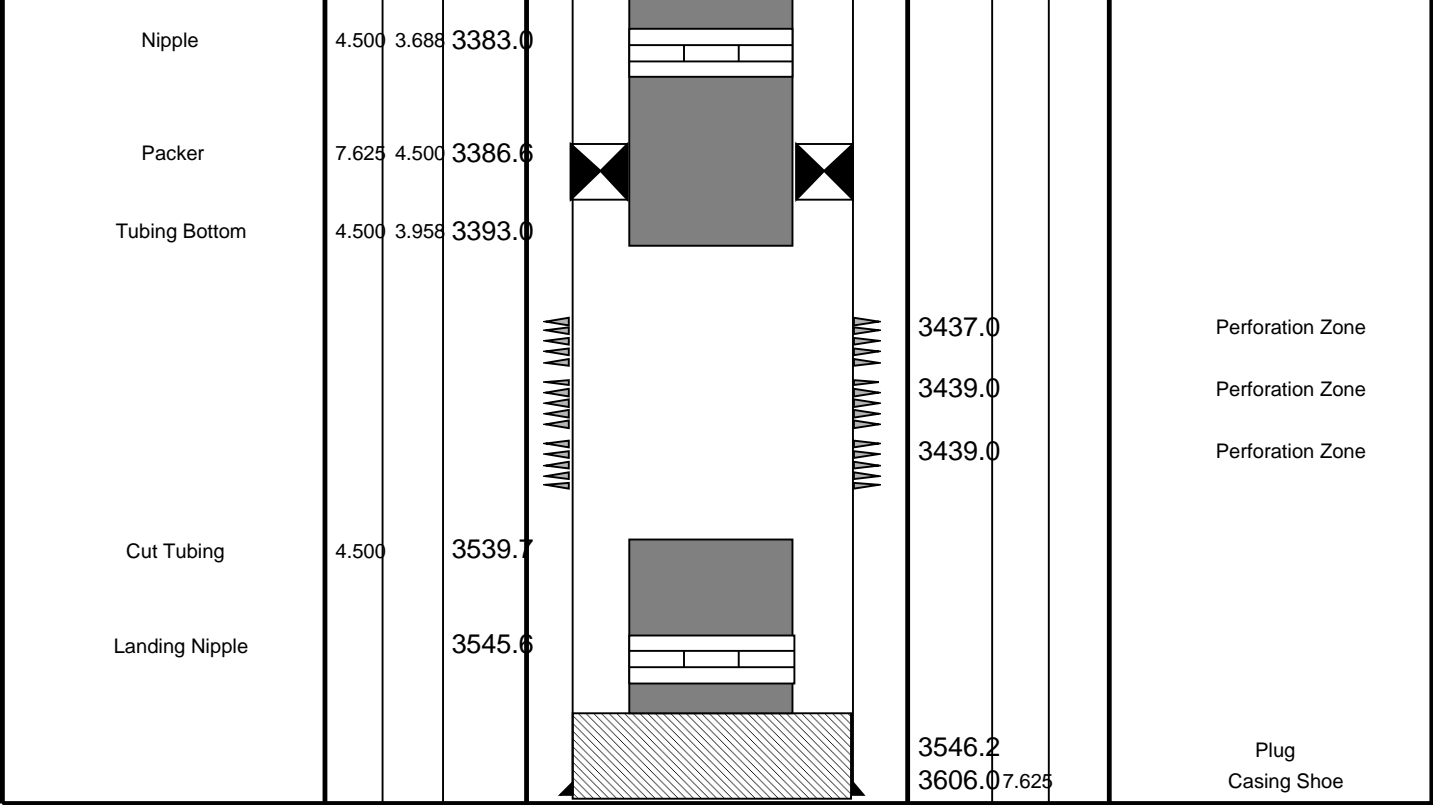
RUN 1 SERVICE ORDER #: PROGRAM VERSION: 15C0-309 FLUID LEVEL:			RUN 2 SERVICE ORDER #: PROGRAM VERSION: FLUID LEVEL:		
LOGGED INTERVAL	START	STOP	LOGGED INTERVAL	START	STOP

EQUIPMENT	DESCRIPTION

RUN 1		RUN 2	
SURFACE EQUIPMENT			
WITM (SHM)			
DOWNHOLE EQUIPMENT			
AH-SWBS YEL1 AH-SWBS 785		7.20	
AH-SWBS YEL1 AH-SWBS 786		6.50	
AH-SWBS YEL1 AH-SWBS 787		5.80	
AH-SWHS YEL1 AH-SWHS 759		5.11	
EQF-46 EQF-46 3006		4.71	
CCL-XA CCL-XA 7202		2.88	
Tension CCL	— TOOL ZERO		

AH-WPSA-BA YEL1 AH-WPSA-BA 4001		2.43
AH-122		1.86
AH-Shooting adapter		1.73
AH-Shock Sub AH-Shock Sub		1.70
AH-Shock Sub AH-Shock Sub		1.05
AH-Secure Sub AH-Secure Sub		0.41
SHM_GUN		0.15
TOOL BOTTOM		
MAXIMUM STRING DIAMETER 4.50 IN MEASUREMENTS RELATIVE TO TOOL ZERO ALL LENGTHS IN METERS		

Production String	(in)		(ft)	Well Schematic	(ft)	(in)		Casing String
	OD	ID	MD		MD	OD	ID	
Tubing Hanger	7.625	5.500	12.0			7.625		Casing String
Tubing, 17.0 lbm/ft	5.500	4.892						
SSSV	5.500		448.7					
Sliding Sleeve	5.500		1145.3					
Sliding Sleeve	5.500		1817.5					
Tubing Bottom	5.500	4.892	3373.0					
Crossover Joint	5.500	4.500	3373.0					
Tubing, 12.8 lbm/ft	4.500	3.958	3373.5					



3.65" Powercutter
Cutting Pass

MAXIS Field Log

PERFO2 Operational Summary Listing

Device	Status	Req Depth (M)	Obs Depth (M)	Time Used
Power Cutter	Used	3378.4	3378.4	Wed Nov 07 18:36:56 2007

Output DLIS Files						
DEFAULT	PERFO_016LUP	FN:14	PRODUCER	07-Nov-2007 18:33	3382.7 M	3326.9 M

PIP SUMMARY

Time Mark Every 60 S

Raw Casing Collar Locator (RCCL)

-3 (----) 17

Casing Collar Locator (CCL)

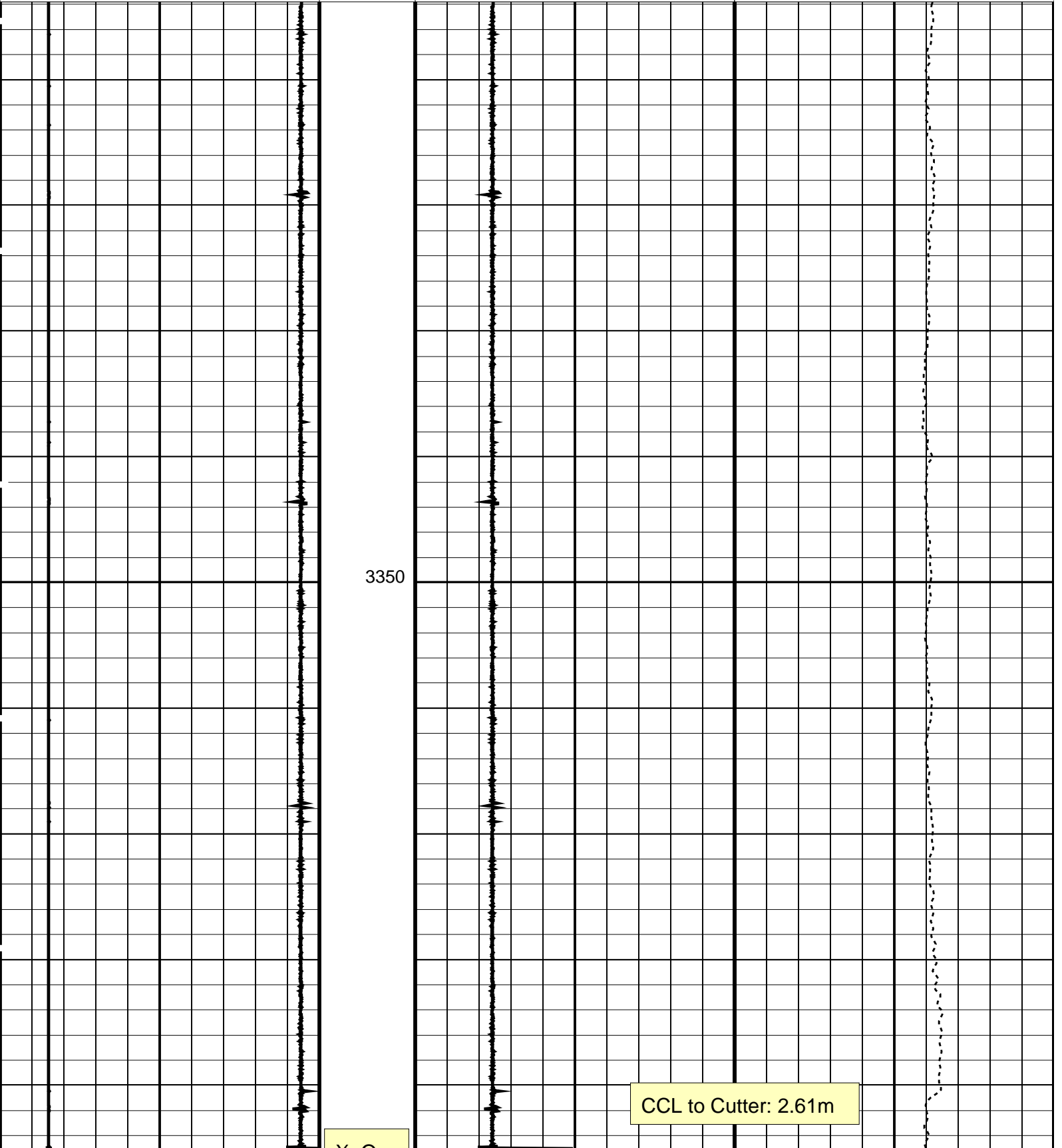
-19 (----) 1

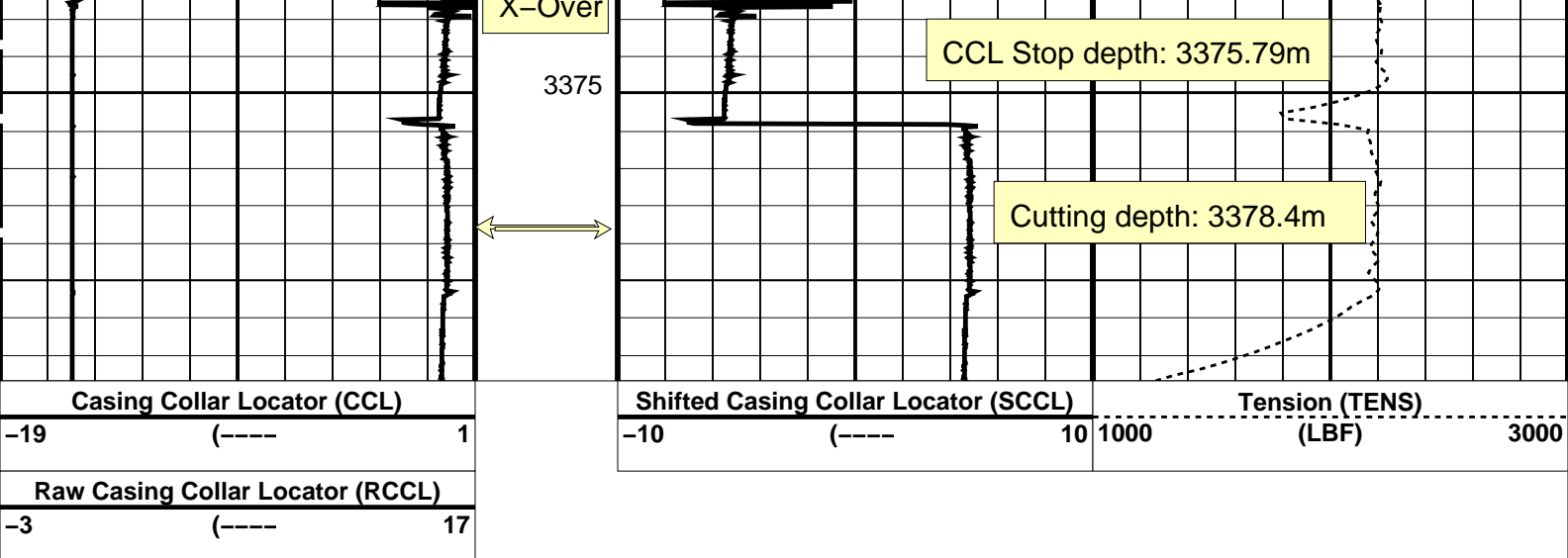
Shifted Casing Collar Locator (SCCL)

-10 (----) 10

Tension (TENS)

(LBF) 1000 3000





PIP SUMMARY

Time Mark Every 60 S

Parameters

DLIS Name	Description	Value
CCLD	CCL-XA: Casing Collar Locator	12 IN
CCLT	CCL reset delay	0.3 V
	CCL Detection Level	

Format: CCLLog Vertical Scale: 1:200

Graphics File Created: 07-Nov-2007 18:33

OP System Version: 15C0-309

MCM

SHM_GUN SRPC-3357-Q2_2007 CCL-XA 15C0-309

Output DLIS Files

DEFAULT PERFO_016LUP FN:14 PRODUCER 07-Nov-2007 18:33

Schlumberger

3.65" Powercutter
Correlation log

MAXIS Field Log

Company: Esso Australia Pty Ltd

Well: CBA F4

Output DLIS Files

DEFAULT PERFO_013LUP FN:11 PRODUCER 07-Nov-2007 17:49

OP System Version: 15C0-309

MCM

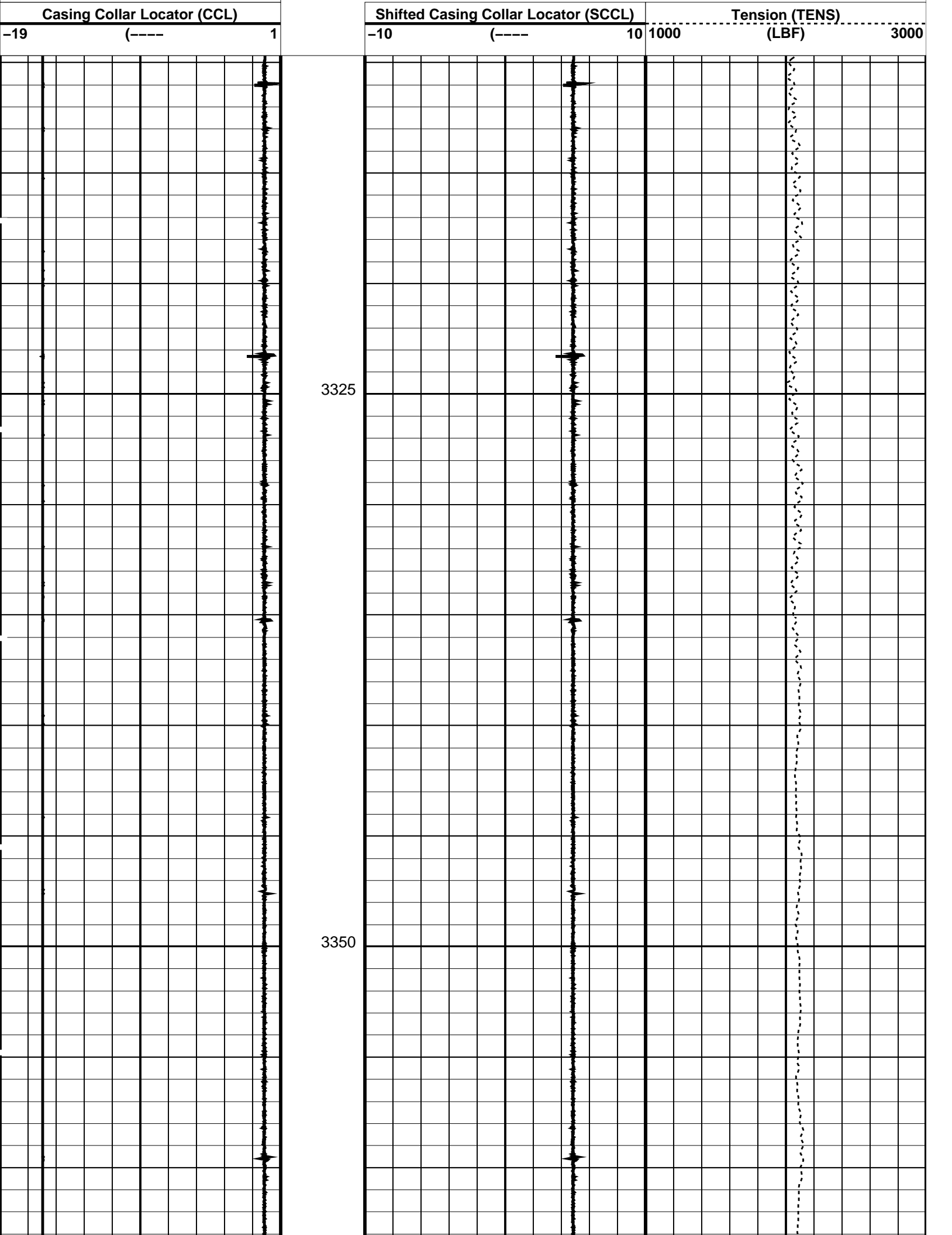
SHM_GUN SRPC-3357-Q2_2007 CCL-XA 15C0-309

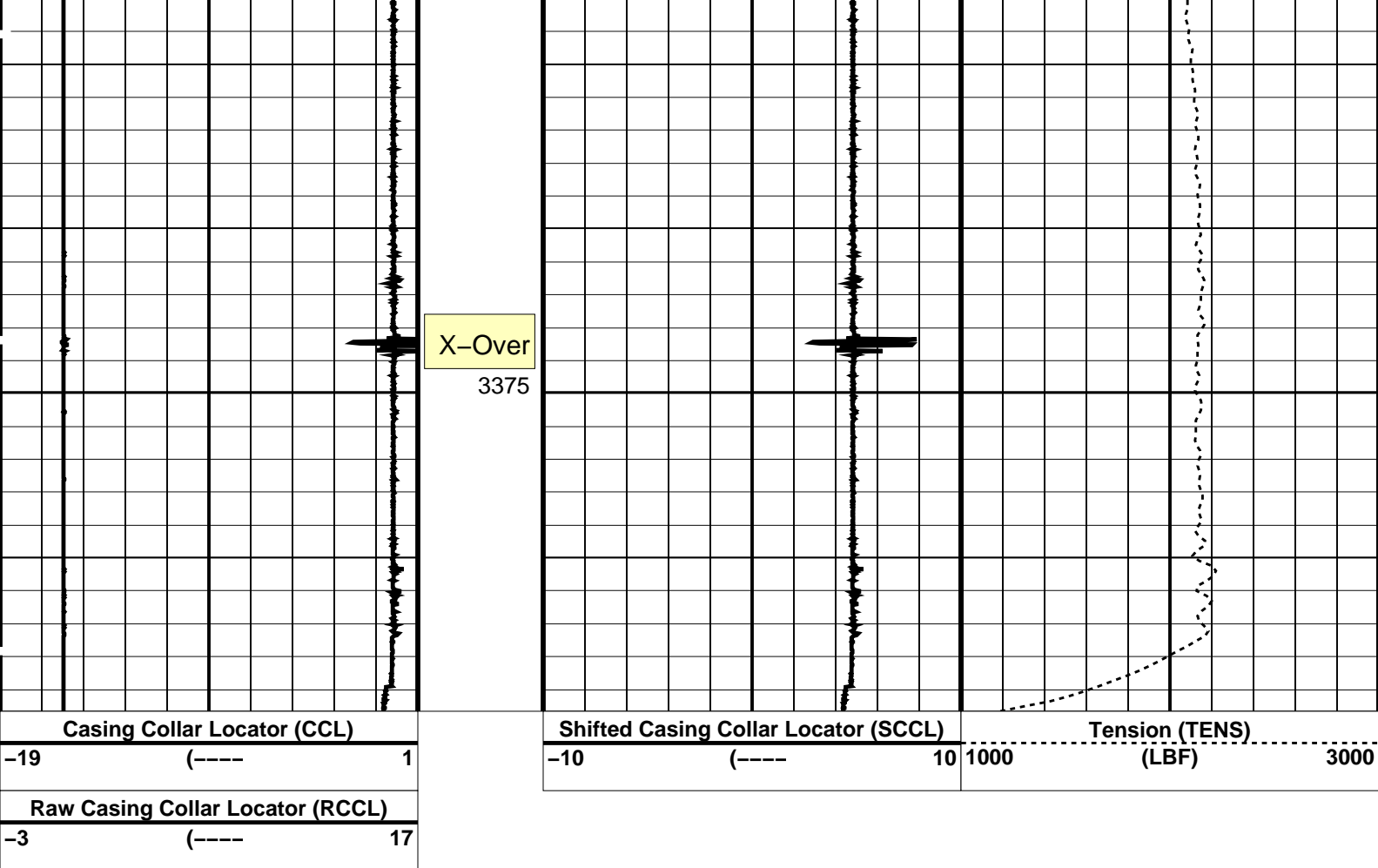
PIP SUMMARY

Time Mark Every 60 S

Raw Casing Collar Locator (RCCL)

-3 (----) 17





PIP SUMMARY

Time Mark Every 60 S

Parameters

DLIS Name	Description	Value
CCLD	CCL reset delay	12 IN
CCLT	CCL Detection Level	0.3 V

Format: CCLLog Vertical Scale: 1:200 Graphics File Created: 07-Nov-2007 17:49

OP System Version: 15C0-309

MCM

SHM_GUN SRPC-3357-Q2_2007 CCL-XA 15C0-309

Output DLIS Files

DEFAULT PERFO_013LUP FN:11 PRODUCER 07-Nov-2007 17:49

Company: Esso Australia Pty Ltd

Schlumberger

Well: CBA F4
Field: Cobia
Rig: Rig 22
Country: Australia

3.65" Powercutter
Tubing Cut Record
07-Nov-2007