

[illegible]

Company: Esso Australia Pty Ltd.

Well: W-5

Field: West Kingfish

Rig : Prod4 / Crane

Country: Australia

PLT
Survey

Field: West Kingfish
Location: Gippsland
Well: W-5
Company: Esso Australia Pty Ltd.

LOCATION

Gippsland Elev.: K.B. 34.2 m
Basin G.L. -74 m
Bass Strait D.F. 34.2 m

Permanent Datum: M.S.L.
Log Measured From: K.B.
Drilling Measured From: K.B.

State: Victoria
Max. Well Deviation 44 deg
Longitude 148 06'15.1"E
Latitude 038 35'40.7"S

Logging Date

Run Number

Depth Driller

Schlumberger Depth

Bottom Log Interval

Top Log Interval

Casing Fluid Type

Salinity

Density

Fluid Level

BIT/CASING/TUBING STRING

Bit Size

From

To

Casing/Tubing Size

Weight

Grade

From

To

Maximum Recorded Temperatures

Logger On Bottom

Unit Number

Recorded By

Witnessed By

PVT DATA

Oil Density
Water Salinity
Gas Gravity

Bo

Bw

1/Bg

Bubble Point Pressure

Bubble Point Temperature

Solution GOR

Maximum Deviation

CEMENTING DATA

Primary/Squeeze

Casing String No

Lead Cement Type

Volume

Density

Water Loss

Additives

Tail Cement Type

Volume

Density

Water Loss

Additives

Expected Cement Top

Logging Date

Run Number

Depth Driller

Schlumberger Depth

Bottom Log Interval

Top Log Interval

Casing Fluid Type

Salinity

Density

Fluid Level

BIT/CASING/TUBING STRING

Bit Size

From

To

Casing/Tubing Size

Weight

Grade

From

To

Maximum Recorded Temperatures

Logger On Bottom

Unit Number

Recorded By

Witnessed By

DEPTH SUMMARY LISTING

Date Created: 23-OCT-2007 7:18:03

Depth System Equipment

Depth Measuring Device		Tension Device		Logging Cable	
Type:	IDW-EB	Type:	PSDS/OSDS	Type:	2-32ZT
Serial Number:	6373	Serial Number:	325357	Serial Number:	24426
Calibration Date:	04-Jan-2007	Calibration Date:	10-Oct-2007	Length:	5584.85 M
Calibrator Serial Number:	9	Calibrator Serial Number:	1174	Conveyance Method: Wireline Rig Type: Rigless	
Calibration Cable Type:	2-32ZT	Calibration Gain:	0.89		
Wheel Correction 1:	-2	Calibration Offset:	180.00		
Wheel Correction 2:	-4				

Depth Control Parameters

Log Sequence:	Subsequent Log In the Well
Reference Log Name:	Solar composite log.
Reference Log Run Number:	
Reference Log Date:	0

Depth Control Remarks

1. IDW used as primary depth control
2. Z Chart used as secondary depth control
3.
4.
5.
6.

DISCLAIMER

THE USE OF AND RELIANCE UPON THIS RECORDED-DATA BY THE HEREIN NAMED COMPANY (AND ANY OF ITS AFFILIATES, PARTNERS, REPRESENTATIVES, AGENTS, CONSULTANTS AND EMPLOYEES) IS SUBJECT TO THE TERMS AND CONDITIONS AGREED UPON BETWEEN SCHLUMBERGER AND THE COMPANY, INCLUDING: (a) RESTRICTIONS ON USE OF THE RECORDED-DATA; (b) DISCLAIMERS AND WAIVERS OF WARRANTIES AND REPRESENTATIONS REGARDING COMPANY'S USE OF AND RELIANCE UPON THE RECORDED-DATA; AND (c) CUSTOMER'S FULL AND SOLE RESPONSIBILITY FOR ANY INFERENCE DRAWN OR DECISION MADE IN CONNECTION WITH THE USE OF THIS RECORDED-DATA.

OTHER SERVICES1
OS1: None
OS2:
OS3:
OS4:
OS5:

REMARKS: RUN NUMBER 1
Log correlated to Esso Solar composite supplied with program.
Maximum well deviation = 44 degrees at 706m MDKB.
Complete a PLT survey over the interval 2780m MDKB to HUD , making 6 static passes (3 up - 3 down) and 6 Flowing Passes(3 up - 3 down)
Shut in - SBHP: 2970 psia SBHT: 217 degf
Flowing - FBHP:1322 psia FBHT: 217 degf (all mesurments taken @ 2790m MDKB)
HUD: 2826m MDKB
Well Test From Platform:

THP: 1500kpa	PAP: 7428kpa
THT: 57 degf	Gas Litf: 45 km3/d
OIL: 22 kl/d	Water: none
Gas: 35 km3/d	
Crew : J Light,J Annear,K Kerr,B Taylor.	

RUN 1					
SERVICE ORDER #:		AusI7509095			
PROGRAM VERSION:		14C0-302			
FLUID LEVEL:					
LOGGED INTERVAL	START	STOP	LOGGED INTERVAL	START	STOP

EQUIPMENT DESCRIPTION					
RUN 1			RUN 2		

SURFACE EQUIPMENT

WITM-A 827
 PSC_16MHZ 806

DOWNHOLE EQUIPMENT

SWBS-B 731

7.78

SWBS-B 763

7.04

SWBS-B 761

6.35

SWBS-B 762

5.67

SWHS-A 753

5.34

PSPT-B 827
 PSC-A 806
 PSPT-B 827
 PSTC 806
 PBMS-B 827
 CQG_F_Mano 827
 RTD_Thermometer 827
 GR 827
 CCL 827
 PBMS 827

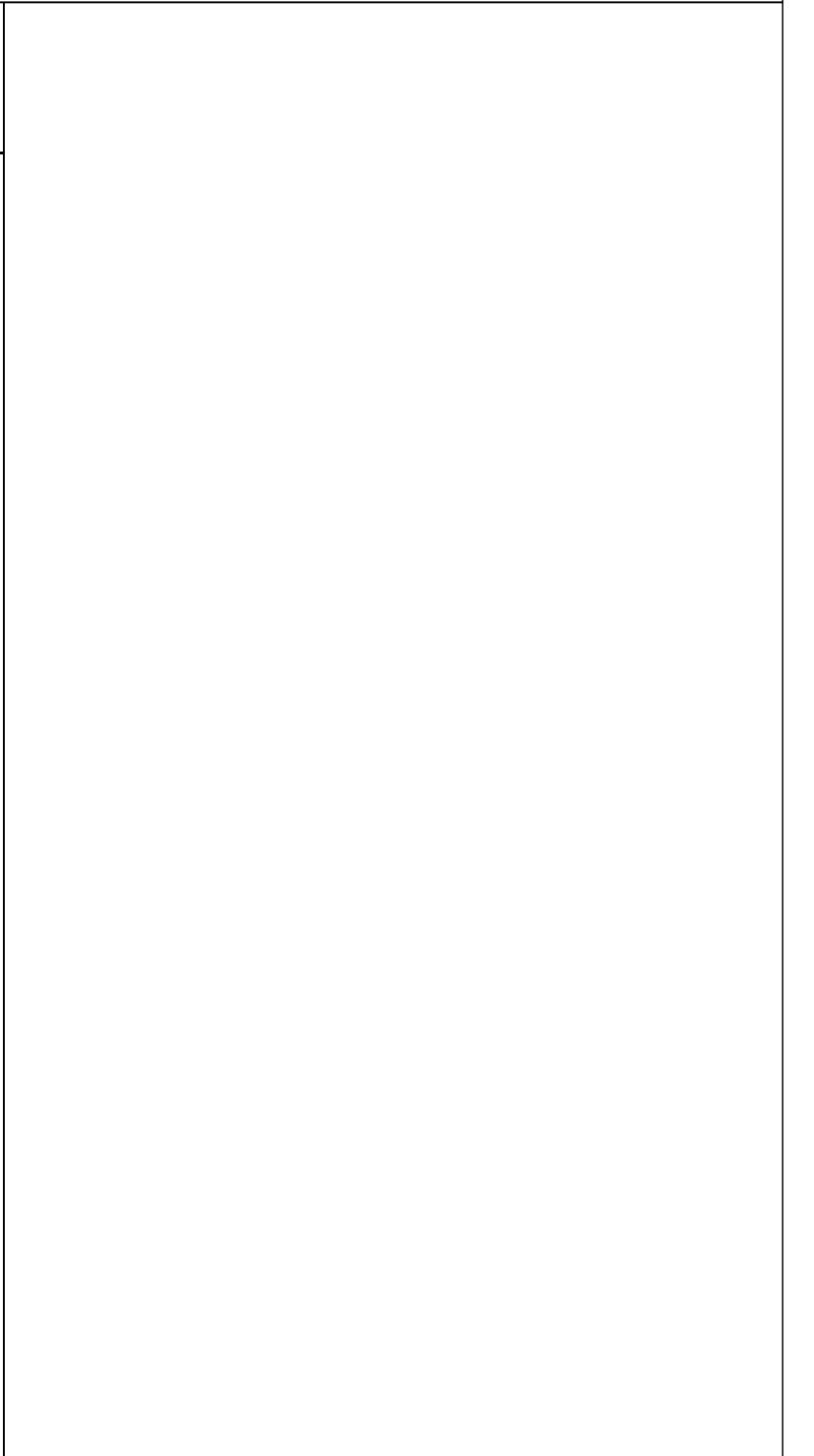
Detail MT
 TelStatus
 CTEM

GR

3.73

4.86

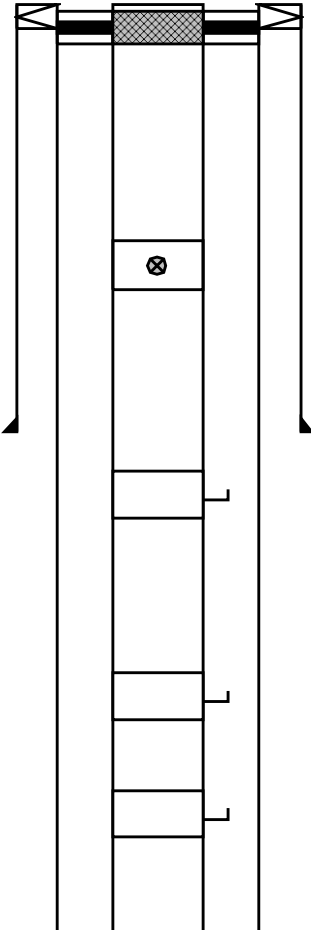
4.86

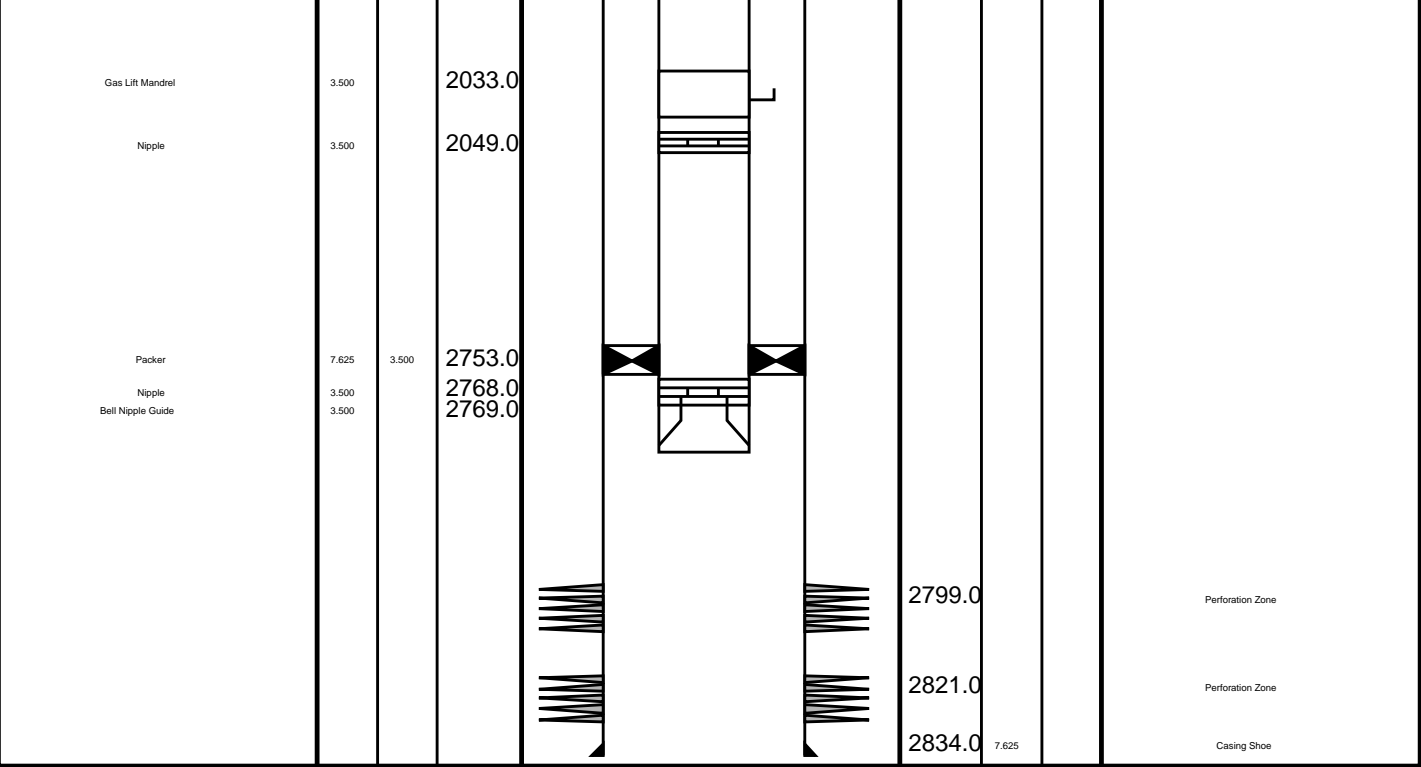


Well Temp — 2.80
CQG Manom — 2.69
CCL — 2.57
PBMS PSTC — 2.34

PILS-A 839
PILS-A 839
Spinner — 1.84
2.34

PFCS-A 796
Holdup Probes 796
Spinner 3.5 796
Relative Bearing 796
Caliper 796
PFCC-A 796
PFCH-A 796
PFCS Spin 0.57
PFCS Cali 0.45
PFCS Prob
PFCS Wave HV
PFCS Rela
PFCS Cart
Tension 0.00
TOOL ZERO
1.57
MAXIMUM STRING DIAMETER 1.69 IN
MEASUREMENTS RELATIVE TO TOOL ZERO
ALL LENGTHS IN METERS

Production String	(in)		(m)	Well Schematic	(m)	(in)		Casing String
	OD	ID	MD		MD	OD	ID	
Tubing	3.500		12.6		13.8	10.025		Casing String Liner Hanger Casing Shoe
Tubing Hanger	7.625	3.500	11.0		13.2	10.750	7.625	
Shutin Valve	3.500		449.0					
					671.0	10.750		
Gas Lift Mandrel	3.500		864.0					
Gas Lift Mandrel	3.500		1309.0					
Gas Lift Mandrel	3.500		1568.0					



Job Events Summary

MAXIS Field Log

Schlumberger Job Event Summary

Time	Elapsed Time	Depth (M)	File
Log Pass (up)	27-Oct-2007 2:26	000:09	2831.3 – 2765.0 FCS_ILS_PSP_017LUP
Log Pass (down)	27-Oct-2007 2:35	000:07	2765.0 – 2831.3 FCS_ILS_PSP_018LDP
Log Pass (up)	27-Oct-2007 2:42	000:04	2831.3 – 2764.5 FCS_ILS_PSP_019LUP
Log Pass (down)	27-Oct-2007 2:47	000:04	2764.5 – 2834.5 FCS_ILS_PSP_021LDP
Log Pass (up)	27-Oct-2007 2:51	000:03	2834.5 – 2764.5 FCS_ILS_PSP_022LUP
Log Pass (down)	27-Oct-2007 2:54	000:03	2764.5 – 2833.1 FCS_ILS_PSP_023LDP
Log Pass (up)	27-Oct-2007 2:57	000:13	2833.1 – 2765.1 FCS_ILS_PSP_024LUP
Log Pass (down)	27-Oct-2007 3:10	000:13	2765.1 – 2830.5 FCS_ILS_PSP_025LDP
Station Log	27-Oct-2007 3:26	006:05	2792.5 – 55.5 FCS_ILS_PSP_030LTP
Log Pass (down)	27-Oct-2007 9:33	000:07	2768.5 – 2837.1 FCS_ILS_PSP_031LDP
Log Pass (up)	27-Oct-2007 9:40	000:07	2837.1 – 2765.3 FCS_ILS_PSP_032LUP
Log Pass (down)	27-Oct-2007 9:47	000:04	2765.0 – 2837.4 FCS_ILS_PSP_033LDP
Log Pass (up)	27-Oct-2007 9:52	000:04	2837.4 – 2765.5 FCS_ILS_PSP_034LUP
Log Pass (down)	27-Oct-2007 9:56	000:13	2763.8 – 2831.9 FCS_ILS_PSP_035LDP
Log Pass (up)	27-Oct-2007 10:09	000:13	2832.2 – 2764.4 FCS_ILS_PSP_036LUP
Log Pass (down)	27-Oct-2007 10:22	000:03	2764.8 – 2835.4 FCS_ILS_PSP_037LDP
Log Pass (up)	27-Oct-2007 10:25	000:02	2835.4 – 2767.9 FCS_ILS_PSP_038LUP

Schlumberger

Flowing Mulipass

MAXIS Field Log

Company: Esso Australia Pty Ltd.

Well: W-5

PLQL Passes Summary

Pass # 1: Src: PLQL_CS, Log: DOWN , Avg.CS: 5 M/MN
Pass # 2: Src: PLQL_CS, Log: UP , Avg.CS: 5 M/MN
Pass # 3: Src: PLQL_CS, Log: DOWN , Avg.CS: 10 M/MN
Pass # 4: Src: PLQL_CS, Log: UP , Avg.CS: 9 M/MN
Pass # 5: Src: PLQL_CS, Log: DOWN , Avg.CS: 18 M/MN
Pass # 6: Src: PLQL_CS, Log: UP , Avg.CS: 18 M/MN
Pass # 7: Src: PLQL_CS, Log: DOWN , Avg.CS: 30 M/MN
Pass # 8: Src: PLQL_CS, Log: UP , Avg.CS: 29 M/MN

Company: Esso Australia Pty Ltd.

Well: W-5

PLQL Data Manager Files

Pass # 1
Pass # 2
Pass # 3
Pass # 4
Pass # 5
Pass # 6
Pass # 7
Pass # 8

Company: Esso Australia Pty Ltd.

Well: W-5

Output DLIS Files

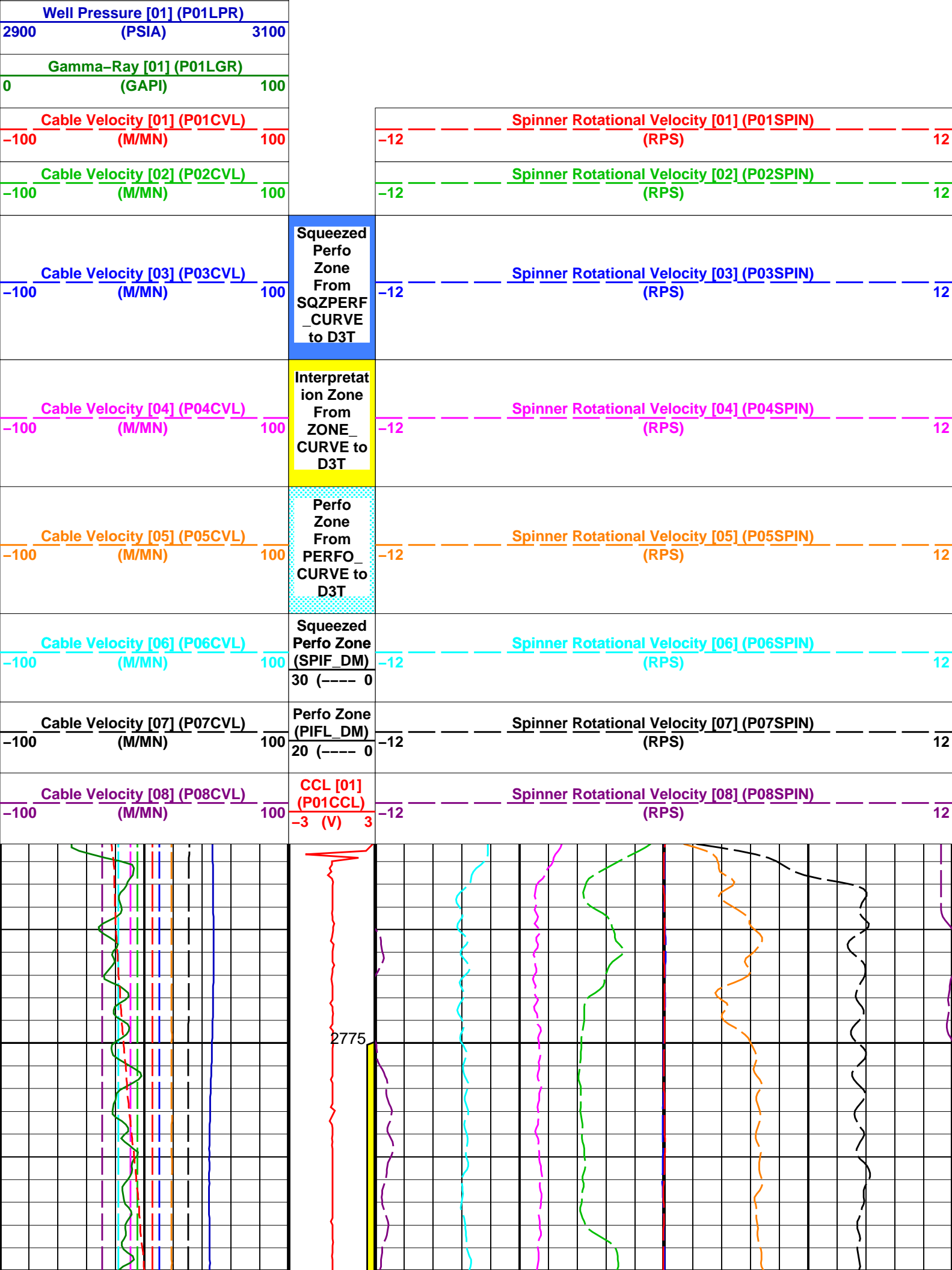
DEFAULT	FCS_ILS_PSP_081PUP	FN:69	PRODUCER	29-Oct-2007 02:52	2828.1 M	2766.2 M
---------	--------------------	-------	----------	-------------------	----------	----------

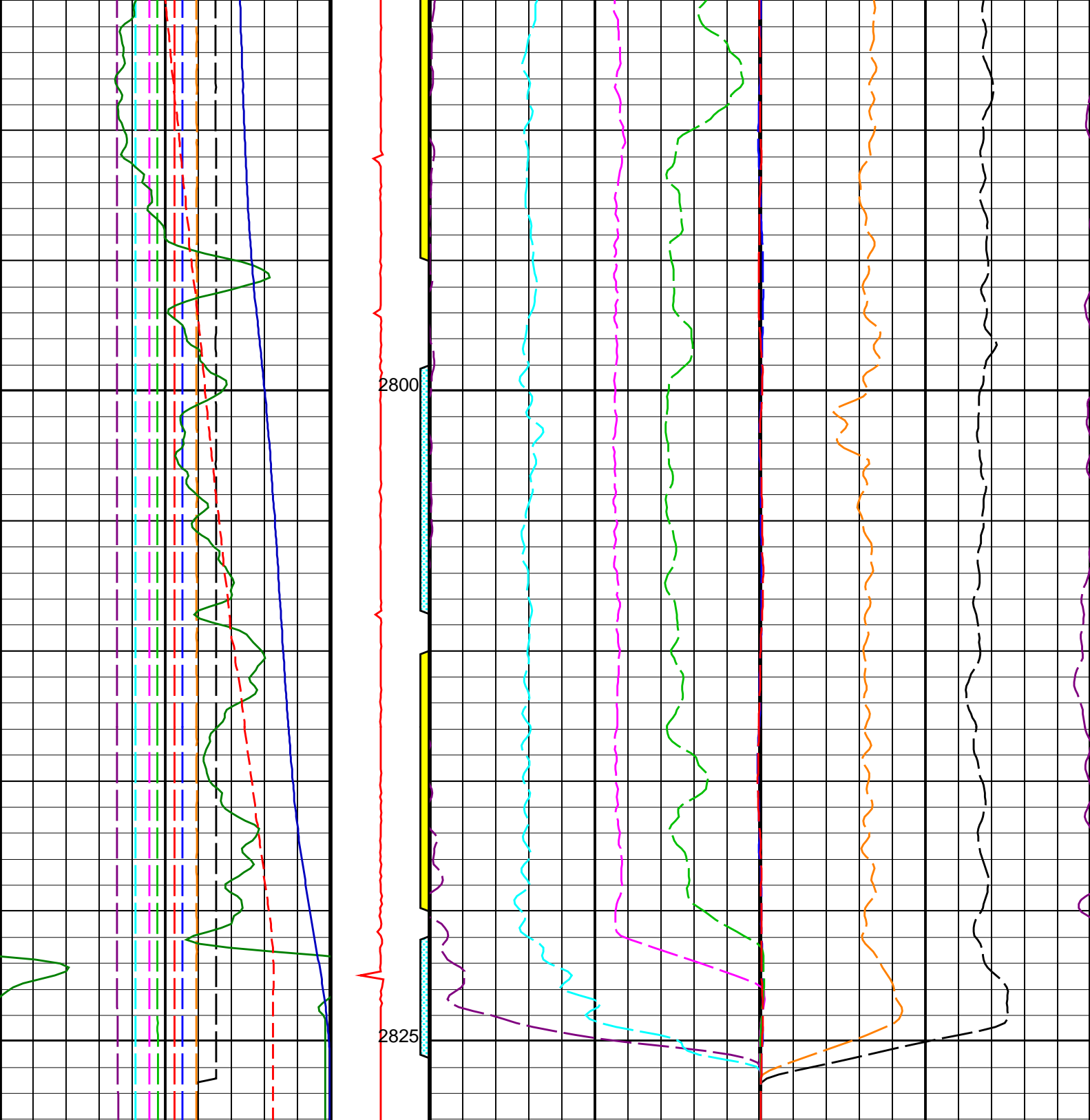
OP System Version: 14C0-302

MCM

PFCS-A	14C0-302	PILS-A	14C0-302
PSPT-A/B	14C0-302		

Fluid Temperature [01] (P01TMP)
215 (DEGF) 220





Cable Velocity [08] (P08CVL) (M/MN)	CCL [01] (P01CCL) -3 (V) 3	Spinner Rotational Velocity [08] (P08SPIN) (RPS)
-100 100	-12 12	
Cable Velocity [07] (P07CVL) (M/MN)	Perfo Zone (PIFL_DM) 20 (---- 0)	Spinner Rotational Velocity [07] (P07SPIN) (RPS)
-100 100	-12 12	
Cable Velocity [06] (P06CVL) (M/MN)	Squeezed Perfo Zone (SPIF_DM) 30 (---- 0)	Spinner Rotational Velocity [06] (P06SPIN) (RPS)
-100 100	-12 12	
Cable Velocity [05] (P05CVL)	Perfo Zone From	Spinner Rotational Velocity [05] (P05SPIN)
-100 100		-12 12

-100	(M/MN)	100	PERFO_ CURVE to D3T	-12	(RPS)	12
-100	Cable Velocity [04] (P04CVL) (M/MN)	100	Interpretat ion Zone From ZONE_ CURVE to D3T	-12	Spinner Rotational Velocity [04] (P04SPIN) (RPS)	12
-100	Cable Velocity [03] (P03CVL) (M/MN)	100	Squeezed Perfo Zone From SQZPERF_ CURVE to D3T	-12	Spinner Rotational Velocity [03] (P03SPIN) (RPS)	12
-100	Cable Velocity [02] (P02CVL) (M/MN)	100		-12	Spinner Rotational Velocity [02] (P02SPIN) (RPS)	12
-100	Cable Velocity [01] (P01CVL) (M/MN)	100		-12	Spinner Rotational Velocity [01] (P01SPIN) (RPS)	12
0	Gamma-Ray [01] (P01LGR) (GAPI)	100				
2900	Well Pressure [01] (P01LPR) (PSIA)	3100				
215	Fluid Temperature [01] (P01TMP) (DEGF)	220				

Parameters

DLIS Name	Description	Value
CSID	PFCS-A: PSP Flow and caliper Tool Casing Size I.D.	6.969 IN
CSID	PSPT-A/B: Production Services Logging Platform Casing Size I.D.	6.969 IN
CSID	BORDYN: BorDyn (Well Test Validation) Casing Size I.D.	6.969 IN
CSID	PLQL: Production Logging Quick Look Casing Size I.D.	6.969 IN
CCLS	CCL Selector	CCLC
FCHD	Cased Hole Diameter Selector	PFC1
PCVS	CVEL Selector	CVEL
PGRS	GR Selector	GR
PGS	Pressure Gauge Selector	WPRE
PWHS	PLQL Water HoldUp Selector	NONE
RHOS	Fluid Density Selector	MWFD
SPIS	Spinner Selector	SPIN
TMPS	Temperature Selector	WTEP

Format: PLQLMultiPassWithInsert Vertical Scale: 1:200 Graphics File Created: 29-Oct-2007 02:52

OP System Version: 14C0-302

MCM

PFCS-A	14C0-302	PILS-A	14C0-302
PSPT-A/B	14C0-302		

Output DLIS Files

DEFAULT	FCS_ILS_PSP_081PUP	FN:69	PRODUCER	29-Oct-2007 02:52
---------	--------------------	-------	----------	-------------------



Flowing Pass Up @
20m/min (3940 ft/hr)

Input DLIS Files

DEFAULT FCS_ILS_PSP_034LUP FN:29 PRODUCER 27-Oct-2007 09:52 2837.4 M 2765.5 M

Output DLIS Files

DEFAULT FCS_ILS_PSP_065PUP FN:53 PRODUCER 27-Oct-2007 15:34 2835.1 M 2763.6 M

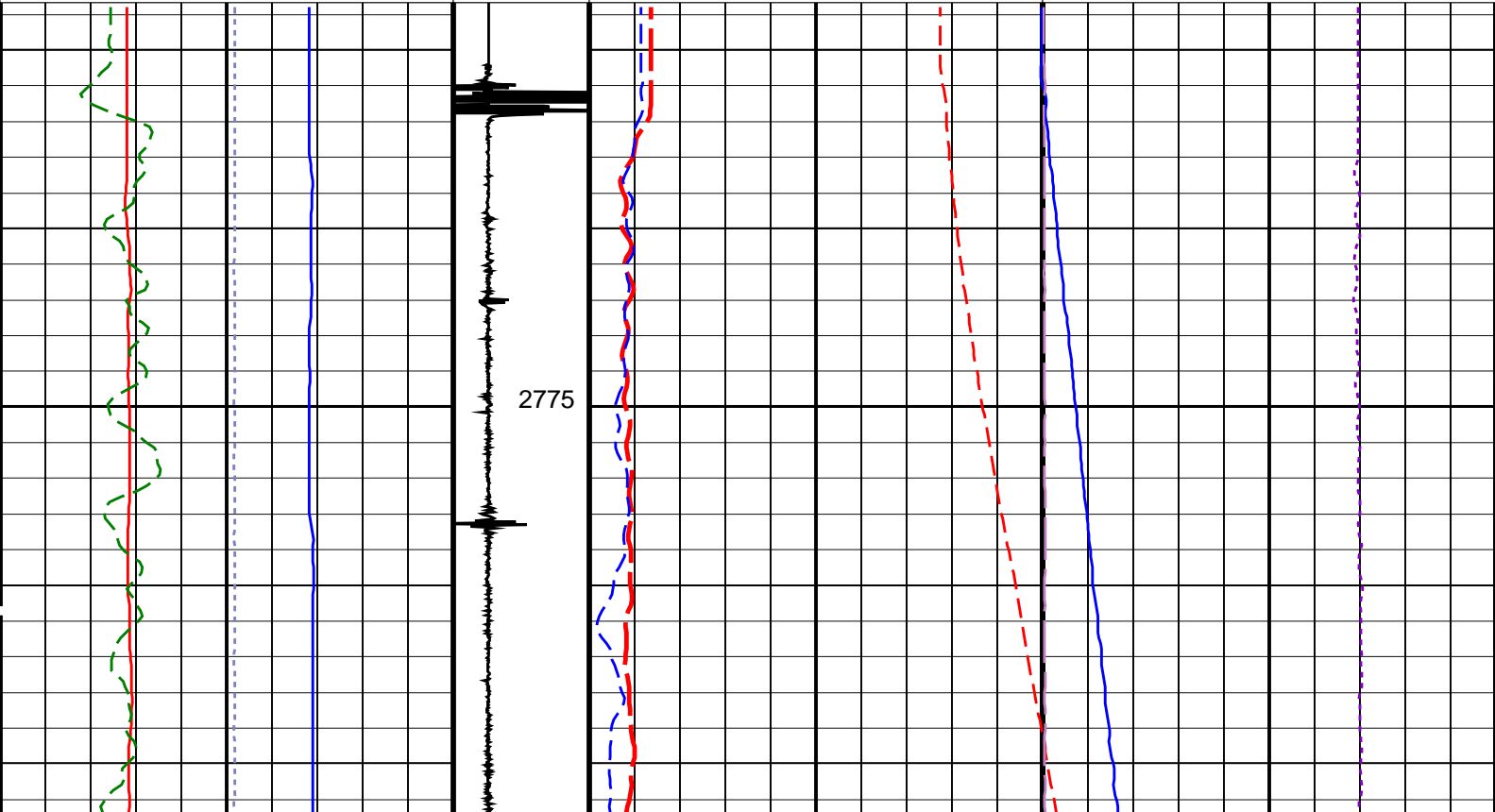
OP System Version: 14C0-302
MCM

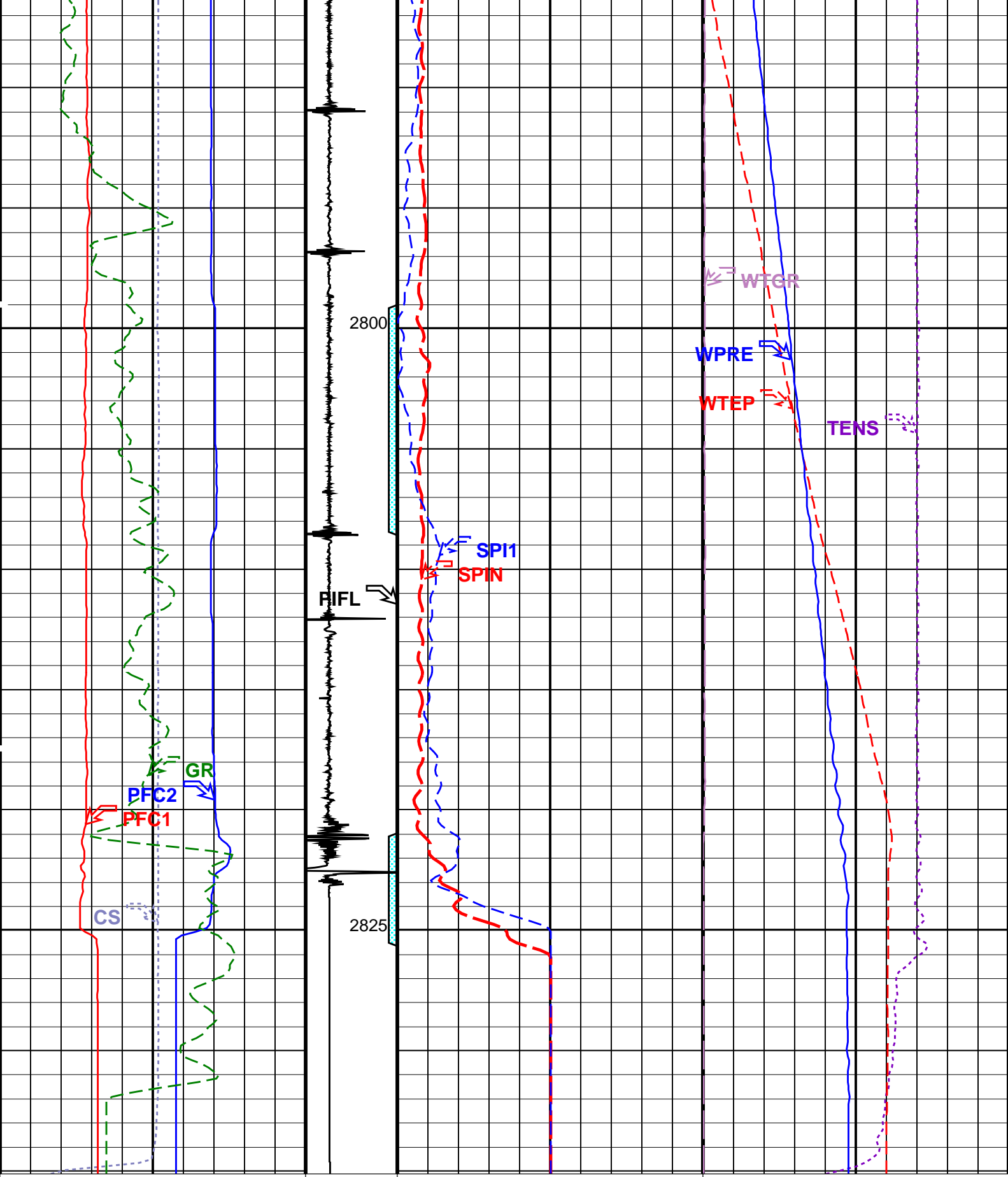
PFCS-A 14C0-302 PILS-A 14C0-302
PSPT-A/B 14C0-302

PIP SUMMARY

Time Mark Every 60 S

Gamma Ray (GR) (GAPI)			Well Pressure (WPRE) (PSIA)	
0 150			1100 1400	
PFCS Y Caliper (PFC2) (IN)			Well Temperature (WTEP) (DEGF)	
0 10		215 220		
PFCS X Caliper (PFC1) (IN)		Perfo Zone From PERFO_ CURVE to D3T	Filtered Auxiliary Spinner 1 (SPI1) (RPS)	Well Temperature Gradient (WTGR) (DC/M)
10 0			-10 10	0 10
Cable Speed (CS) (F/HR)		Computed CCL (CCLC)	Filtered Main Spinner (SPIN) (RPS)	Tension (TENS) (LBF)
0 7000		1 (V) -3	-10 10	0 3000





Cable Speed (CS) (F/HR)	Computed CCL (CCLC) (V)	Filtered Main Spinner (SPIN) (RPS)	Tension (TENS) (LBF)
0	1	-10	0
7000	-3	10	3000

PFC1 X Caliper (PFC1) (IN)	Perfo Zone From PERFO	Filtered Auxiliary Spinner 1 (SPI1) (RPS)	Well Temperature Gradient (WTGR) (DC/M)
10		-10	0
0		10	10

	CURVE to D3T	
PFCY Caliper (PFC2) 0 (IN) 10		Well Temperature (WTEP) 215 (DEGF) 220
Gamma Ray (GR) 0 (GAPI) 150		Well Pressure (WPRE) 1100 (PSIA) 1400

PIP SUMMARY

Time Mark Every 60 S

Format: PSP_1 Vertical Scale: 1:200 Graphics File Created: 27-Oct-2007 15:34


OP System Version: 14C0-302

MCM

PFCY-A	14C0-302	PILS-A	14C0-302
PSPT-A/B	14C0-302		

Parameters		
DLIS Name	Description	Value
PFCY-A: PSP Flow and caliper Tool		
AMOD	Spinner Filter Averaging Mode	LINEAR_AVERAGE
SDCF	Spinner Depth Constant Filter	6
SPI1	Auxiliary Spinner 1 Flowmeter Sonde	PILS-A
SPIN	Main Spinner Flowmeter Sonde	PFCY-A_3.5
PILS-A: PSP In Line Spinner Flowmeter		
AMOD	Spinner Filter Averaging Mode	LINEAR_AVERAGE
SDCF	Spinner Depth Constant Filter	6
SPI1	Auxiliary Spinner 1 Flowmeter Sonde	PILS-A
SPIN	Main Spinner Flowmeter Sonde	PFCY-A_3.5
System and Miscellaneous		
DO	Depth Offset for Playback	-2.3 M
PP	Playback Processing	NORMAL

Input DLIS Files						
DEFAULT	FCS_ILS_PSP_034LUP	FN:29	PRODUCER	27-Oct-2007 09:52	2837.4 M	2765.5 M
Output DLIS Files						
DEFAULT	FCS_ILS_PSP_065PUP	FN:53	PRODUCER	27-Oct-2007 15:34		



Flowing Pass Down @
20m/min (3940 ft/hr)

MAXIS Field Log

Input DLIS Files						
DEFAULT	Flip_FCS_ILS_PSP_048LUP		PRODUCER	27-Oct-2007 14:33	2837.4 M	2765.0 M
Output DLIS Files						
DEFAULT	FCS_ILS_PSP_052PUP	FN:40	PRODUCER	27-Oct-2007 14:41	2833.4 M	2761.5 M

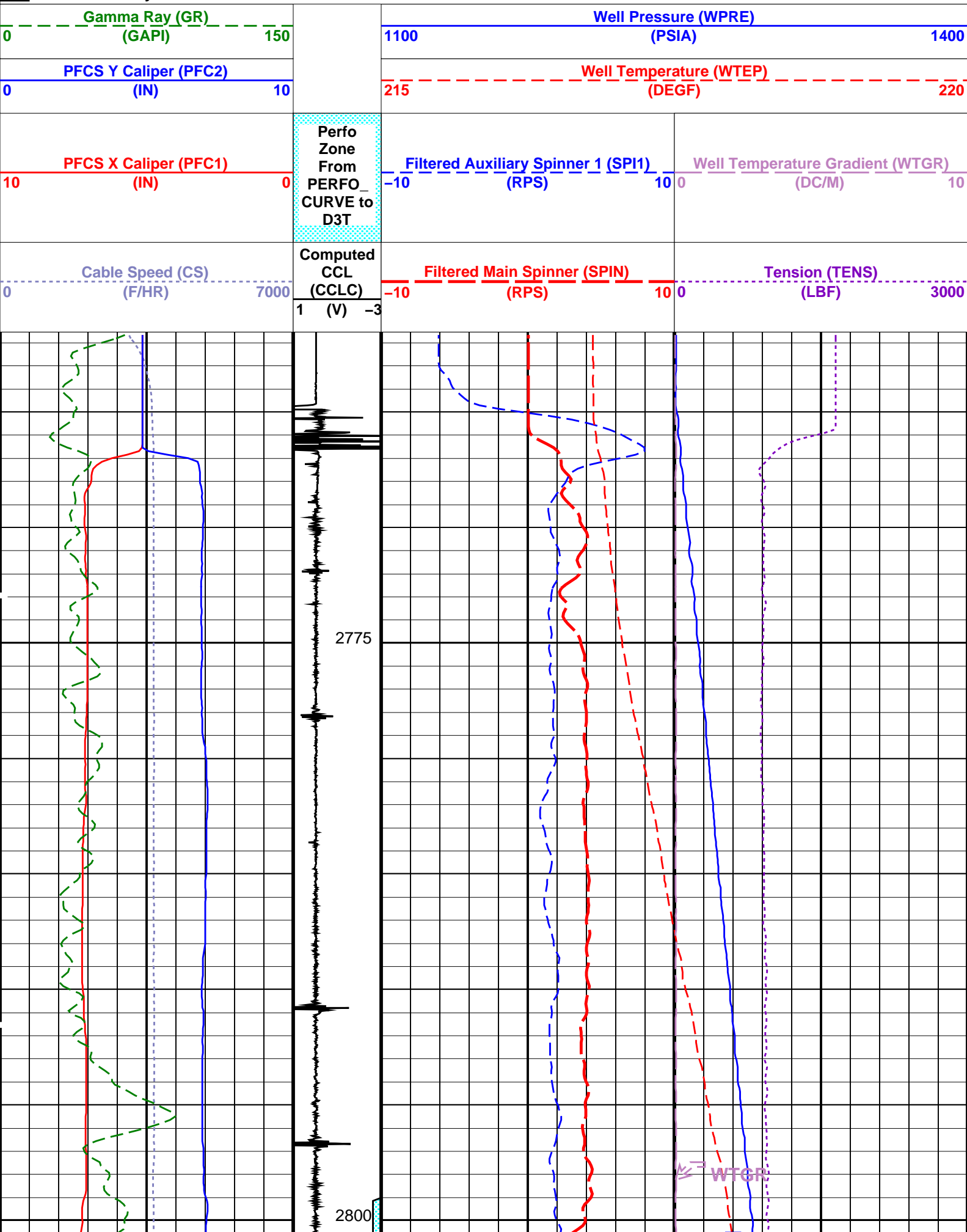
OP System Version: 14C0-302

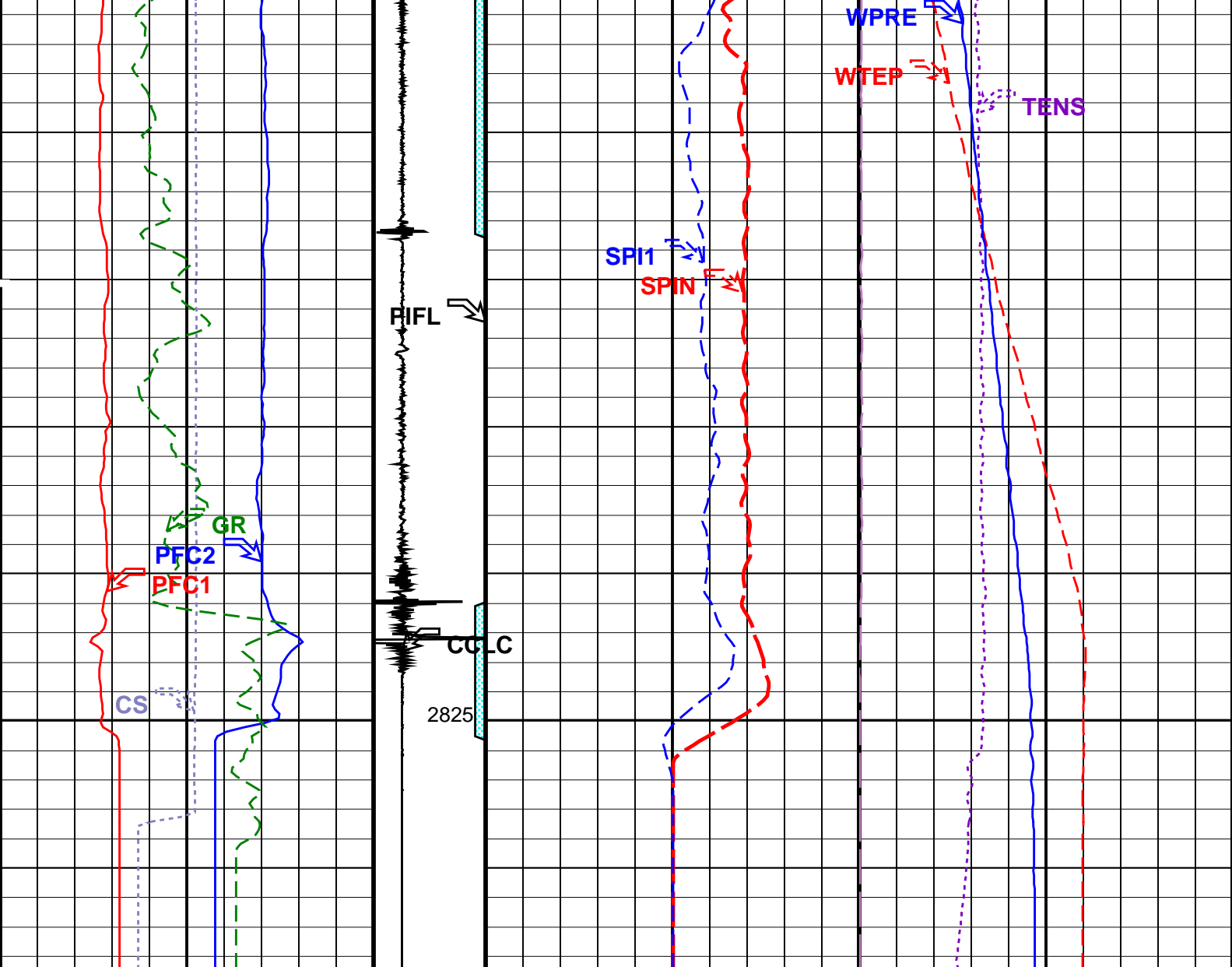
MCM

PFCY-A	14C0-302	PILS-A	14C0-302
PSPT-A/B	14C0-302		

PIP SUMMARY

Time Mark Every 60 S





<div>Cable Speed (CS) (F/HR)</div> <div>07000</div>	<div>Computed CCL (CCLC) (V)</div> <div>1-3</div>	<div>Filtered Main Spinner (SPIN) (RPS)</div> <div>-1010</div>	<div>Tension (TENS) (LBF)</div> <div>03000</div>
<div>PFCS X Caliper (PFC1) (IN)</div> <div>100</div>	<div>Perfo Zone From PERFO_CURVE to D3T</div>	<div>Filtered Auxiliary Spinner 1 (SPI1) (RPS)</div> <div>-1010</div>	<div>Well Temperature Gradient (WTGR) (DC/M)</div> <div>010</div>
<div>PFCS Y Caliper (PFC2) (IN)</div> <div>010</div>		<div>Well Temperature (WTEP) (DEGF)</div> <div>215220</div>	
<div>Gamma Ray (GR) (GAPI)</div> <div>0150</div>		<div>Well Pressure (WPRE) (PSIA)</div> <div>11001400</div>	

PIP SUMMARY


Time Mark Every 60 S
Format: PSP_1 Vertical Scale: 1:200 Graphics File Created: 27-Oct-2007 14:41

OP System Version: 14C0-302
MCM

PFCS-A 14C0-302 PILS-A 14C0-302
PSPT-A/B 14C0-302

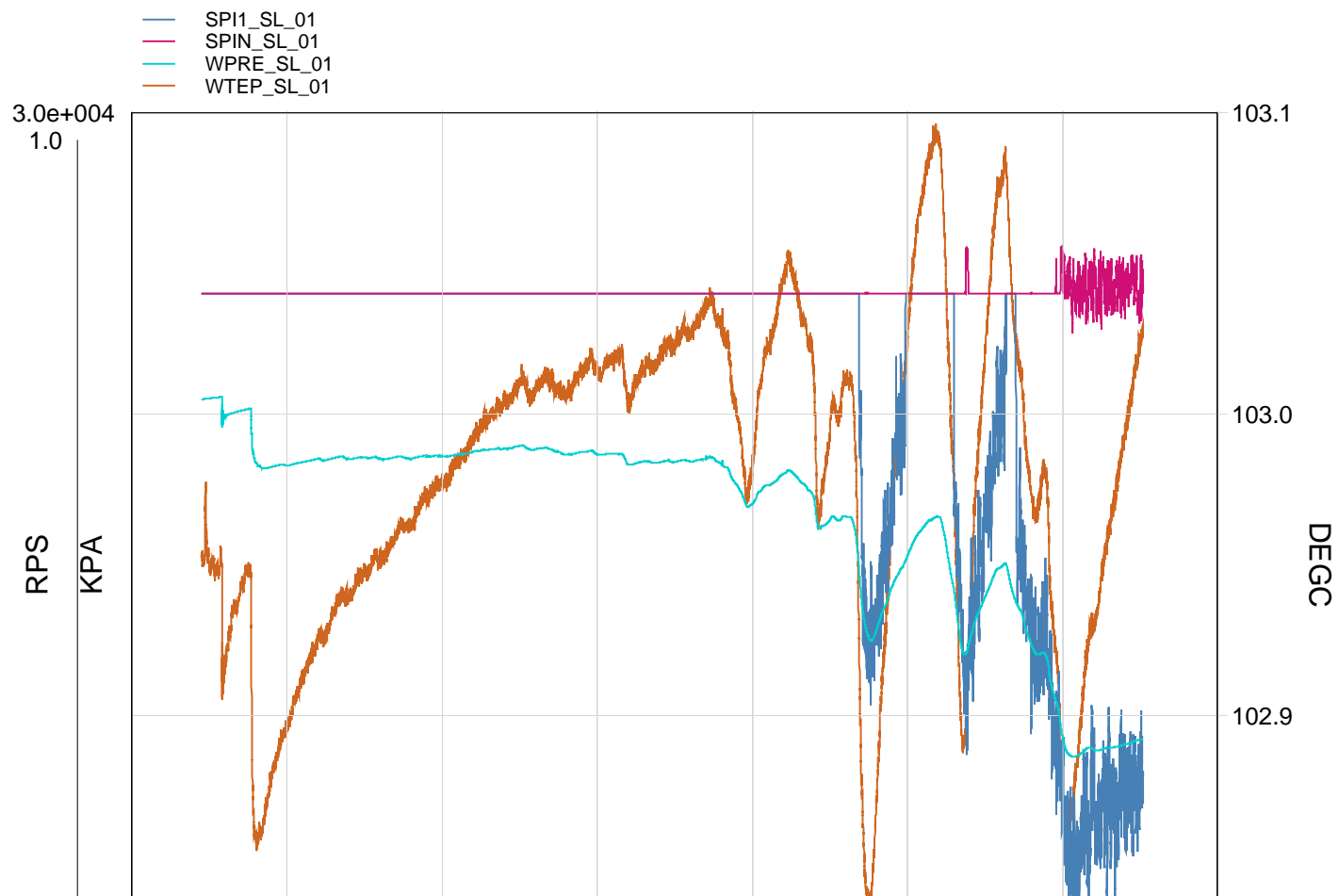
Parameters		
DLIS Name	Description	Value
PFCS-A: PSP Flow and caliper Tool		
AMOD	Spinner Filter Averaging Mode	LINEAR_AVERAGE
SDCF	Spinner Depth Constant Filter	6
SPI1	Auxiliary Spinner 1 Flowmeter Sonde	PILS-A
SPIN	Main Spinner Flowmeter Sonde	PFCS-A_3.5
PILS-A: PSP In Line Spinner Flowmeter		
AMOD	Spinner Filter Averaging Mode	LINEAR_AVERAGE
SDCF	Spinner Depth Constant Filter	6
SPI1	Auxiliary Spinner 1 Flowmeter Sonde	PILS-A
SPIN	Main Spinner Flowmeter Sonde	PFCS-A_3.5
System and Miscellaneous		
DO	Depth Offset for Playback	-4.0 M
PP	Playback Processing	NORMAL

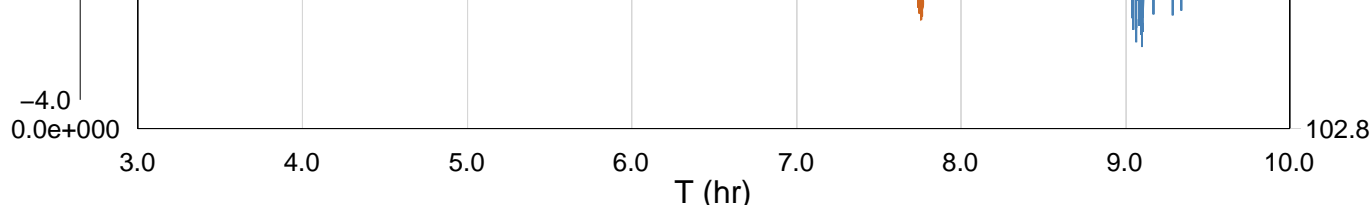
Input DLIS Files					
DEFAULT	Flip_FCS_ILS_PSP_048LUP	PRODUCER	27-Oct-2007 14:33	2837.4 M	2765.0 M
Output DLIS Files					
DEFAULT	FCS_ILS_PSP_052PUP	FN:40	PRODUCER	27-Oct-2007 14:41	



Flow The Well

MAXIS Field Log

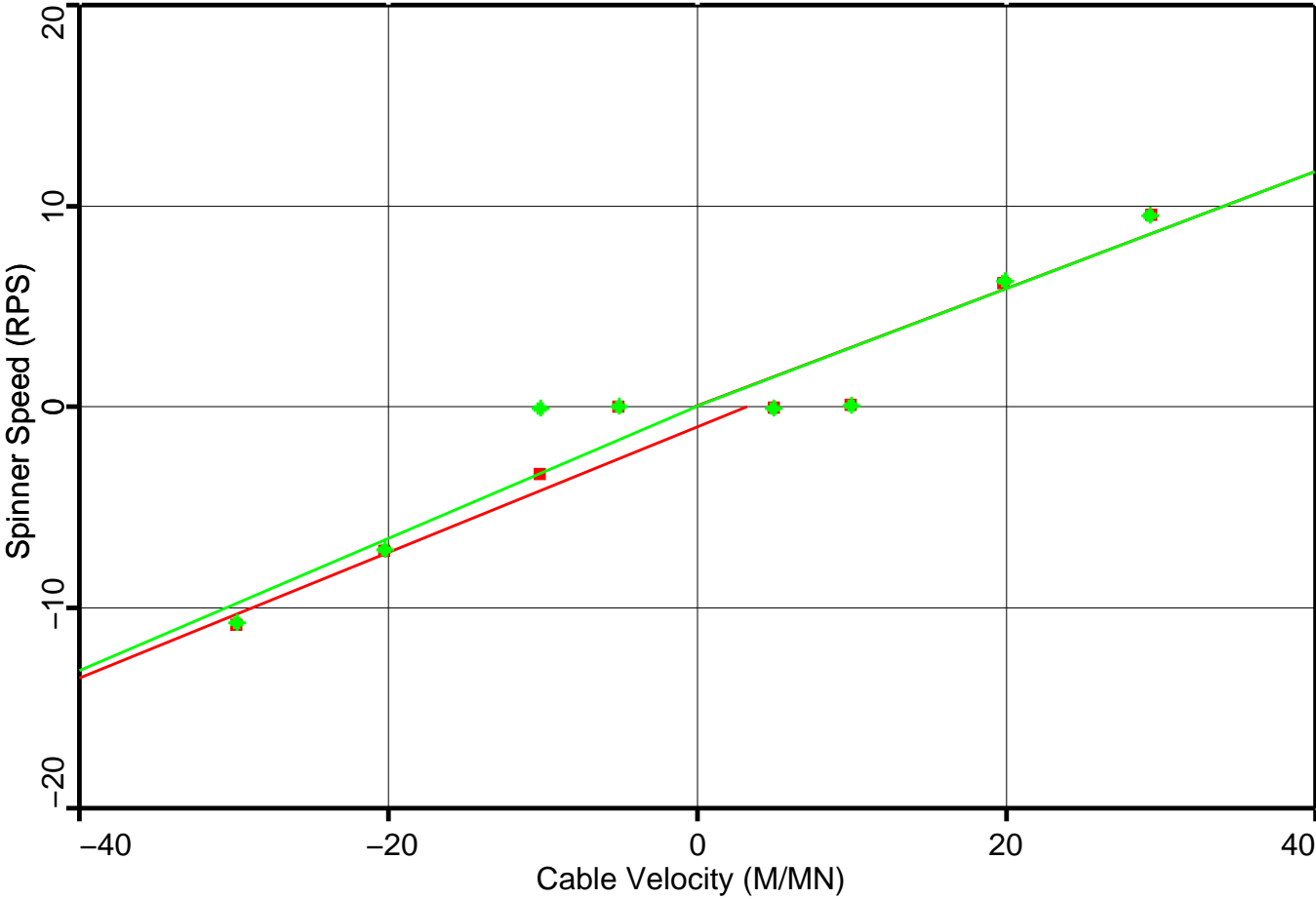




TIME	SPIN_SL	SPI1_SL	WTEP_SL	WPRE_SL
10200.0	-0.0000	0.0002	217.3144	2972.4353
10800.0	0.0000	0.0000	217.2594	2898.6749
11400.0	0.0000	0.0000	217.1627	2709.3465
12000.0	0.0000	0.0000	217.2011	2656.1821
12600.0	0.0000	0.0000	217.2446	2672.7924
13200.0	0.0000	0.0000	217.2812	2686.2049
13800.0	0.0000	0.0000	217.2984	2690.4853
14400.0	0.0000	0.0000	217.3133	2683.5862
15000.0	0.0000	0.0000	217.3326	2689.0331
15600.0	0.0000	0.0000	217.3562	2700.4616
16200.0	0.0000	0.0000	217.3747	2709.4411
16800.0	0.0000	0.0000	217.3996	2729.7795
17400.0	0.0000	0.0000	217.4111	2738.9878
18000.0	0.0000	0.0000	217.4203	2736.4381
18600.0	0.0000	0.0000	217.4158	2707.5116
19200.0	0.0000	0.0000	217.4334	2724.0070
19800.0	0.0000	0.0000	217.4356	2710.9163
20400.0	0.0000	0.0000	217.4239	2671.0174
21000.0	0.0000	0.0000	217.4421	2676.2706
21600.0	0.0000	0.0000	217.4478	2673.2700
22200.0	0.0000	0.0000	217.4558	2669.9137
22800.0	0.0000	0.0000	217.3645	2487.8793
23400.0	0.0000	0.0000	217.4485	2561.5702
24000.0	0.0000	0.0000	217.4781	2601.6369
24600.0	0.0000	0.0000	217.3549	2360.0806
25200.0	0.0000	0.0000	217.4186	2405.9173
25800.0	0.0000	-1.9969	217.1337	1826.9237
26400.0	0.0000	-0.9624	217.3986	2145.7676
27000.0	0.0000	0.0000	217.5430	2368.8674
27600.0	0.0000	0.0000	217.3911	2120.4878
28200.0	0.0000	-1.7013	217.3624	1930.2839
28800.0	0.0000	-0.5045	217.5435	2174.2964
29400.0	0.0000	-1.6570	217.3662	1827.9331
30000.0	0.0000	-2.5034	217.2615	1541.9790
30600.0	0.0245	-3.1719	217.2156	1266.6657
31200.0	0.0827	-2.9100	217.3199	1294.6518
31800.0	0.1859	-2.6905	217.4144	1322.3777

Production Logging Quicklook Spinner Calibration

	Zone Depth (M)	Fluid Vel. (M/MN)	Positive Spinner			Negative Spinner		
			Slope (RSMM)	Intercept (M/MN)	Correl.	Slope (RSMM)	Intercept (M/MN)	Correl.
■	Zone 1 2793.0 – 2776.0 :	1.\$	0.2919	–0.1	0.912	0.3118	3.2	0.99
◆	Zone 2 2820.0 – 2810.0 :	–1.\$	0.2929	–0.1	0.911	0.3274	–0.1	0.91



Schlumberger

Static Mulipass

MAXIS Field Log

PLQL Passes Summary

Pass # 1: Src: PLQL_CS, Log: UP , Avg.CS: 5 M/MN
Pass # 2: Src: PLQL_CS, Log: DOWN , Avg.CS: 4 M/MN
Pass # 3: Src: PLQL_CS, Log: UP , Avg.CS: 10 M/MN
Pass # 4: Src: PLQL_CS, Log: DOWN , Avg.CS: 9 M/MN
Pass # 5: Src: PLQL_CS, Log: UP , Avg.CS: 20 M/MN
Pass # 6: Src: PLQL_CS, Log: DOWN , Avg.CS: 19 M/MN
Pass # 7: Src: PLQL_CS, Log: UP , Avg.CS: 29 M/MN
Pass # 8: Src: PLQL_CS, Log: Down , Avg.CS: 29 M/MN

Company: Esso Australia Pty Ltd. Well: W-5

PLQL Data Manager Files

- Pass # 1
- Pass # 2
- Pass # 3
- Pass # 4
- Pass # 5
- Pass # 6
- Pass # 7
- Pass # 8

Company: Esso Australia Pty Ltd. Well: W-5

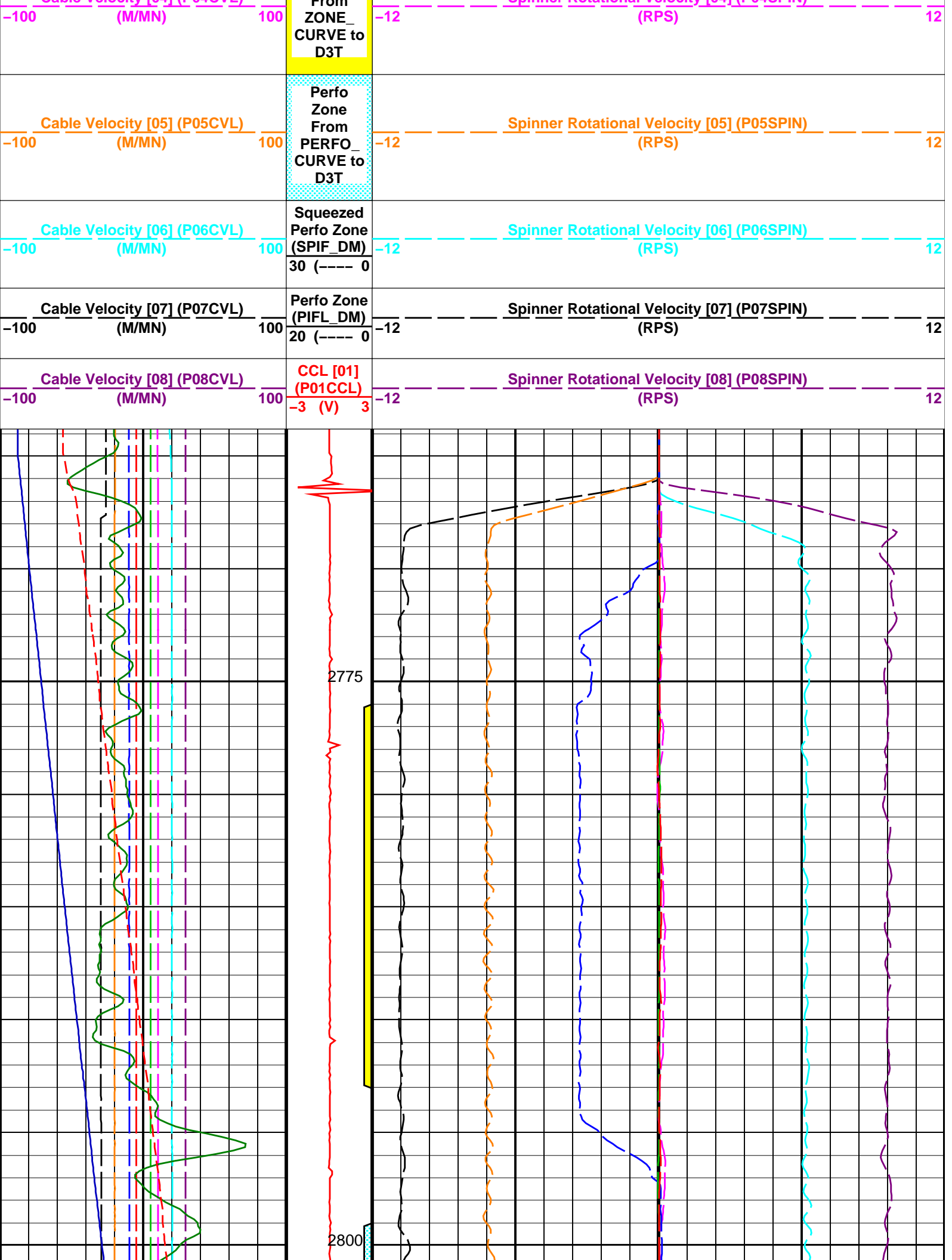
Output DLIS Files

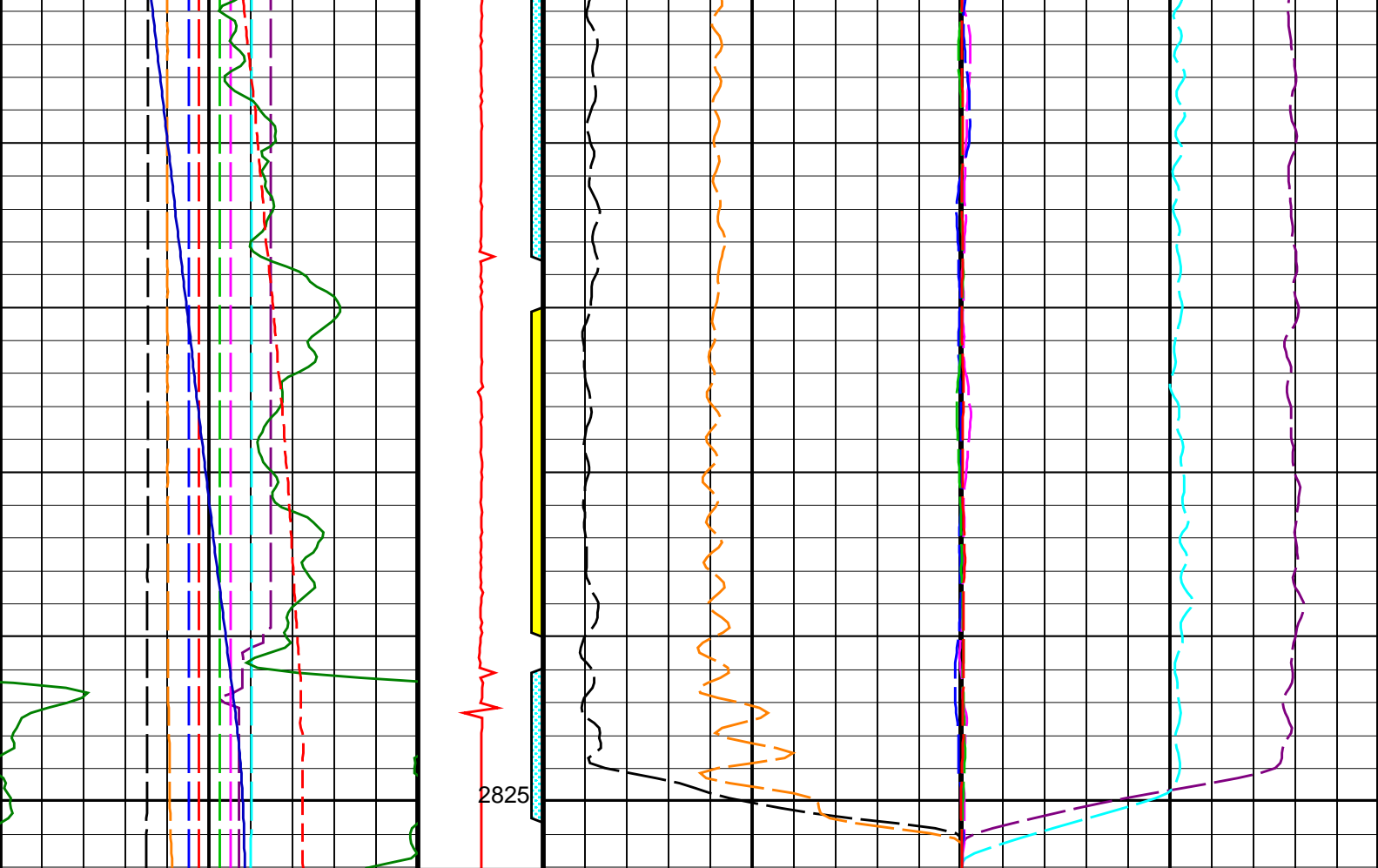
DEFAULT FCS_ILS_PSP_016PUP FN:15 PRODUCER 28-Oct-2007 01:01 2827.0 M 2763.8 M

OP System Version: 14C0-302
MCM

PFCS-A 14C0-302 PILS-A 14C0-302
PSPT-A/B 14C0-302

Fluid Temperature [01] (P01TMP) 215 (DEGF) 220			
Well Pressure [01] (P01LPR) 2900 (PSIA) 3100			
Gamma-Ray [01] (P01LGR) 0 (GAPI) 100			
Cable Velocity [01] (P01CVL) -100 (M/MN) 100			
Cable Velocity [02] (P02CVL) -100 (M/MN) 100	Squeezed Perfo Zone From SQZPERF _CURVE to D3T	Spinner Rotational Velocity [01] (P01SPIN) -12 (RPS) 12	
		Spinner Rotational Velocity [02] (P02SPIN) -12 (RPS) 12	
Cable Velocity [03] (P03CVL) -100 (M/MN) 100		Spinner Rotational Velocity [03] (P03SPIN) -12 (RPS) 12	
Cable Velocity [04] (P04CVL)	Interpretat ion Zone From	Spinner Rotational Velocity [04] (P04SPIN)	





<u>Cable Velocity [08] (P08CVL)</u> (M/MN)	<u>CCL [01] (P01CCL)</u> -3 (V) 3	<u>Spinner Rotational Velocity [08] (P08SPIN)</u> (RPS)
<u>Cable Velocity [07] (P07CVL)</u> (M/MN)	<u>Perfo Zone (PIFL_DM)</u> 20 (---- 0)	<u>Spinner Rotational Velocity [07] (P07SPIN)</u> (RPS)
<u>Cable Velocity [06] (P06CVL)</u> (M/MN)	<u>Squeezed Perfo Zone (SPIF_DM)</u> 30 (---- 0)	<u>Spinner Rotational Velocity [06] (P06SPIN)</u> (RPS)
<u>Cable Velocity [05] (P05CVL)</u> (M/MN)	<u>Perfo Zone From PERFO_CURVE to D3T</u>	<u>Spinner Rotational Velocity [05] (P05SPIN)</u> (RPS)
<u>Cable Velocity [04] (P04CVL)</u> (M/MN)	<u>Interpretation Zone From ZONE_CURVE to D3T</u>	<u>Spinner Rotational Velocity [04] (P04SPIN)</u> (RPS)
<u>Cable Velocity [03] (P03CVL)</u> (M/MN)	<u>Squeezed Perfo Zone From SQZPERF_CURVE to D3T</u>	<u>Spinner Rotational Velocity [03] (P03SPIN)</u> (RPS)
<u>Cable Velocity [02] (P02CVL)</u> (M/MN)		<u>Spinner Rotational Velocity [02] (P02SPIN)</u> (RPS)


<u>Cable Velocity [01] (P01CVL)</u>		<u>Spinner Rotational Velocity [01] (P01SPIN)</u>
-100 (M/MN)	100	-12 (RPS)
<u>Gamma-Ray [01] (P01LGR)</u>		
0 (GAPI)	100	
<u>Well Pressure [01] (P01LPR)</u>		
2900 (PSIA)	3100	
<u>Fluid Temperature [01] (P01TMP)</u>		
215 (DEGF)	220	

Parameters			
DLIS Name	Description	Value	
CSID	PFCS-A: PSP Flow and caliper Tool Casing Size I.D.	6.969	IN
CSID	PSPT-A/B: Production Services Logging Platform Casing Size I.D.	6.969	IN
CSID	BORDYN: BorDyn (Well Test Validation) Casing Size I.D.	6.969	IN
CSID	PLQL: Production Logging Quick Look Casing Size I.D.	6.969	IN
CCLS	CCL Selector	CCLC	
FCHD	Cased Hole Diameter Selector	PFC1	
PCVS	CVEL Selector	CVEL	
PGRS	GR Selector	GR	
PGS	Pressure Gauge Selector	WPRE	
PWHS	PLQL Water HoldUp Selector	DFHM	
RHOS	Fluid Density Selector	WFDE	
SPIS	Spinner Selector	SPIN	
TMPS	Temperature Selector	WTEP	

Format: PLQLMultiPassWithInsert	Vertical Scale: 1:200	Graphics File Created: 28-Oct-2007 01:01
---------------------------------	-----------------------	--

OP System Version: 14C0-302			
MCM			
PFCS-A	14C0-302	PILS-A	14C0-302
PSPT-A/B	14C0-302		

Output DLIS Files			
DEFAULT	FCS_ILS_PSP_016PUP	FN:15	PRODUCER 28-Oct-2007 01:01

	<div>Static Pass Up @ 20m/min (3940 ft/hr)</div>
MAXIS Field Log	

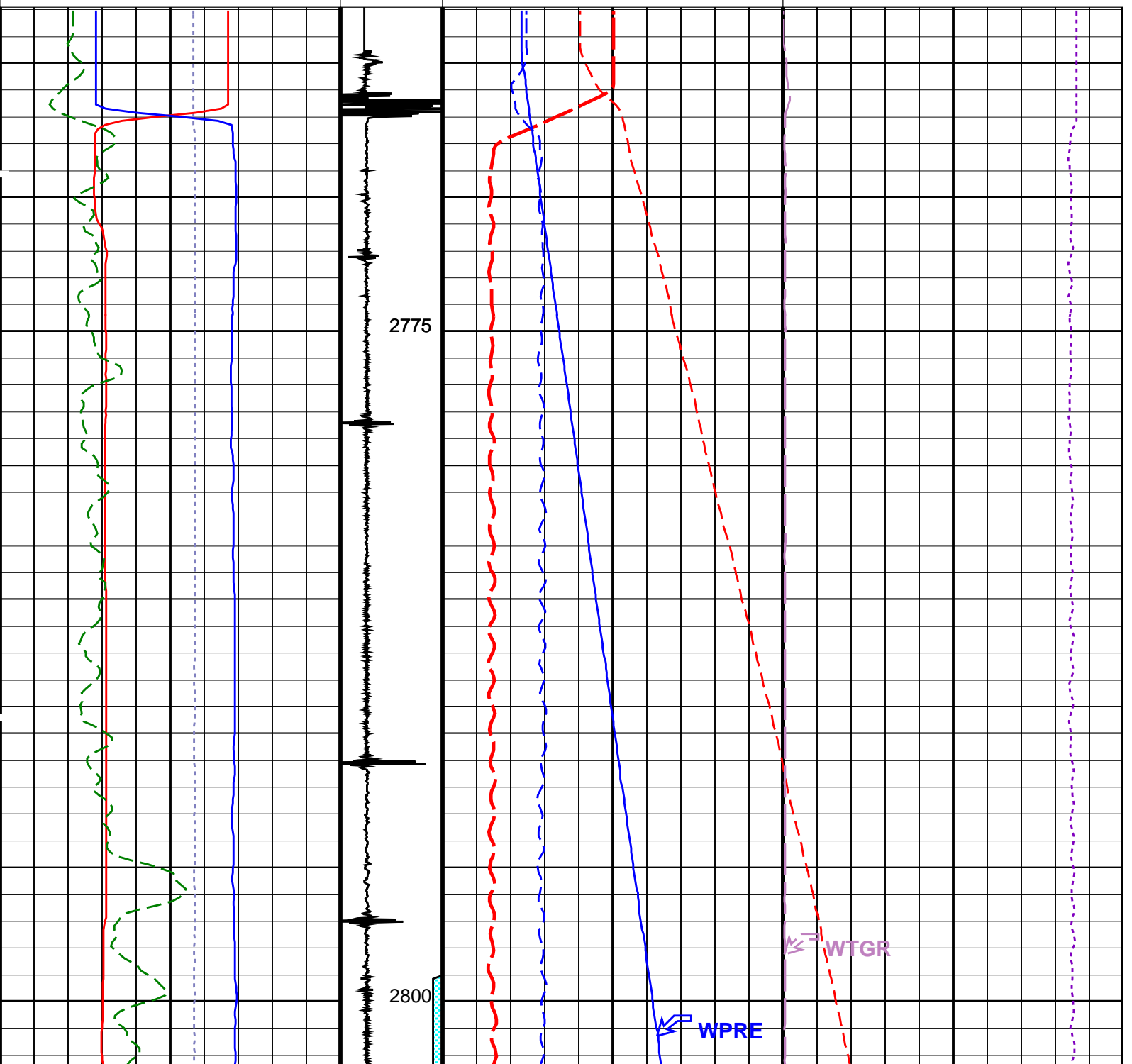
Input DLIS Files					
DEFAULT	FCS_ILS_PSP_019LUP	FN:18	PRODUCER	27-Oct-2007 02:42	2831.3 M 2764.5 M
Output DLIS Files					
DEFAULT	FCS_ILS_PSP_070PUP	FN:58	PRODUCER	27-Oct-2007 15:55	2829.2 M 2762.9 M

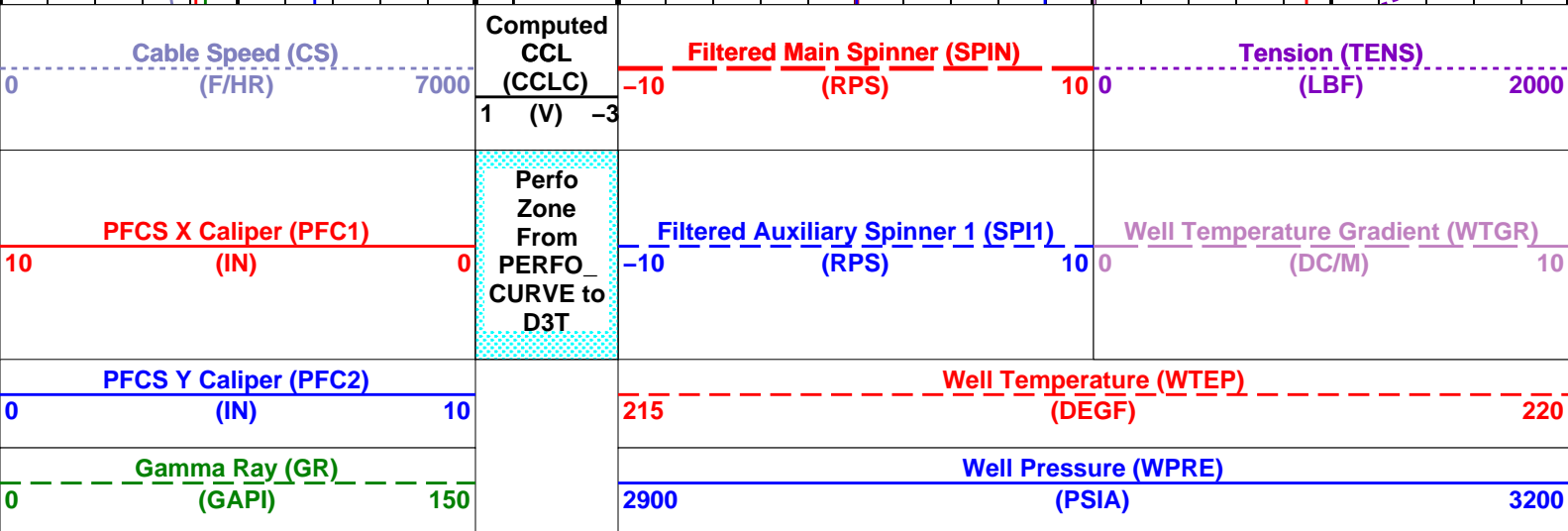
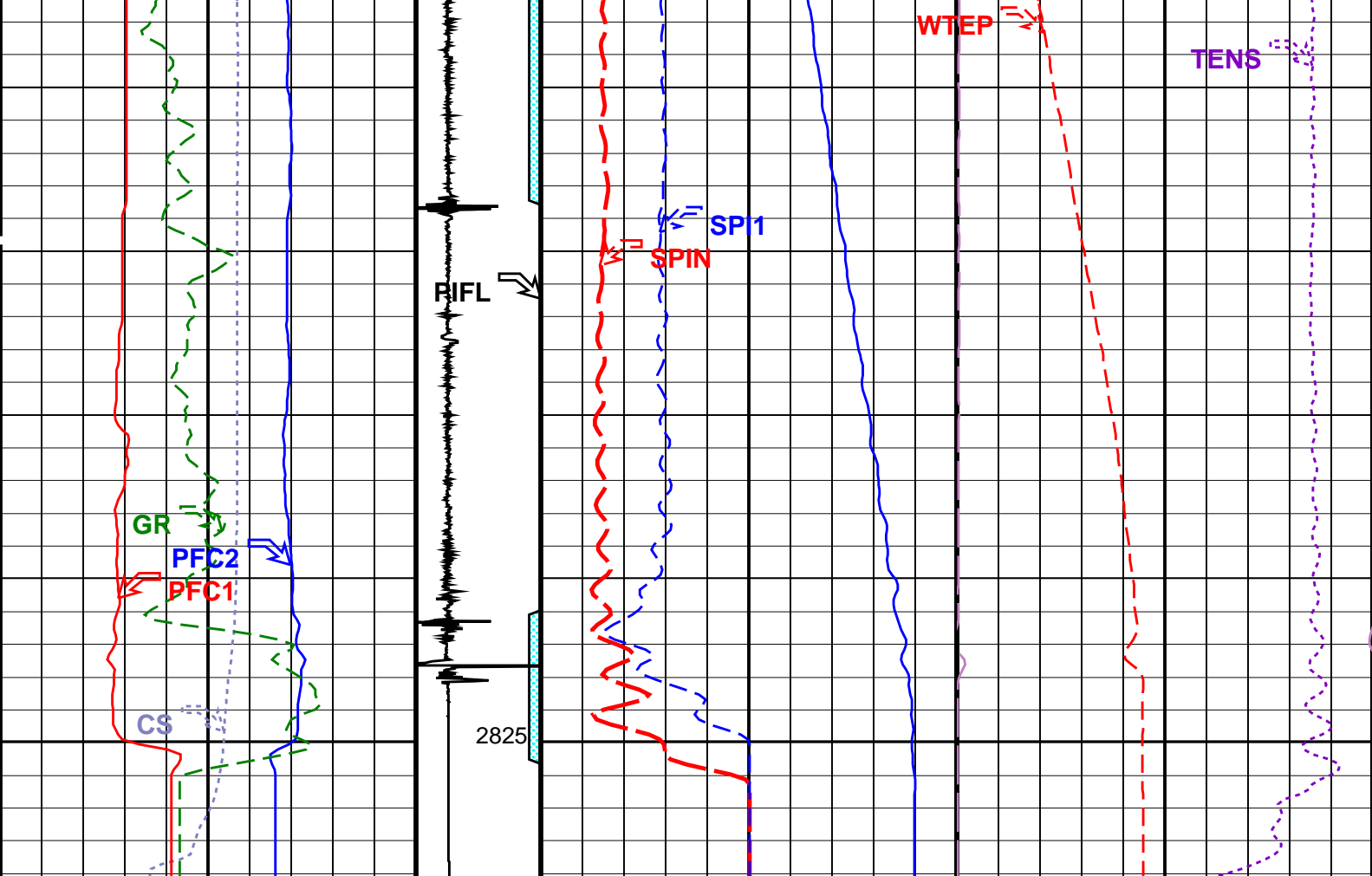
OP System Version: 14C0-302			
MCM			
PFCS-A	14C0-302	PILS-A	14C0-302
PSPT-A/B	14C0-302		

PIP SUMMARY

Time Mark Every 60 S

<p>Gamma Ray (GR) (GAPI)</p> <p>0 150</p>		<p>Well Pressure (WPRE) (PSIA)</p> <p>2900 3200</p>
<p>PFCs Y Caliper (PFC2) (IN)</p> <p>0 10</p>		<p>Well Temperature (WTEP) (DEGF)</p> <p>215 220</p>
<p>PFCs X Caliper (PFC1) (IN)</p> <p>10 0</p>	<p>Perfo Zone From PERFO_ CURVE to D3T</p>	<p>Filtered Auxiliary Spinner 1 (SP1) (RPS)</p> <p>-10 10</p> <p>Well Temperature Gradient (WTGR) (DC/M)</p> <p>0 10</p>
<p>Cable Speed (CS) (F/HR)</p> <p>0 7000</p>	<p>Computed CCL (CCLC) 1 (V) -3</p>	<p>Filtered Main Spinner (SPIN) (RPS)</p> <p>-10 10</p> <p>Tension (TENS) (LBF)</p> <p>0 2000</p>





PIP SUMMARY

Time Mark Every 60 S

Format: PSP_1 Vertical Scale: 1:200

Graphics File Created: 27-Oct-2007 15:55

OP System Version: 14C0-302
MCM

PFCS-A	14C0-302	PILS-A	14C0-302
PSPT-A/B	14C0-302		

Parameters

DLIS Name	Description	Value
PFCS-A:	PSP Flow and caliper Tool	
AMOD	Spinner Filter Averaging Mode	LINEAR_AVERAGE
SDCF	Spinner Depth Constant Filter	6
SP1	Auxiliary Spinner 1 Flowmeter Sonde	PILS-A
SPIN	Main Spinner Flowmeter Sonde	PFCS-A_3.5

AMOD	Spinner Filter Averaging Mode	LINEAR_AVERAGE
SDCF	Spinner Depth Constant Filter	6
SPI1	Auxiliary Spinner 1 Flowmeter Sonde	PILS-A
SPIN	Main Spinner Flowmeter Sonde	PFCS-A 3.5
System and Miscellaneous		
DO	Depth Offset for Playback	-2.2
PP	Playback Processing	NORMAL

Input DLIS Files

DEFAULT	FCS ILS PSP 019LUP	FN:18	PRODUCER	27-Oct-2007 02:42	2831.3 M	2764.5 M
---------	--------------------	-------	----------	-------------------	----------	----------

Output DLIS Files

DEFAULT FCS ILS PSP_070PUP FN:58 PRODUCER 27-Oct-2007 15:55



Static Pass Down @ 20m/min (3940 ft/hr)

MAXIS Field Log

Input DLIS Files

DEFAULT	FLIP FCS ILS PSP 027	PRODUCER	27-Oct-2007 03:26	2834.5 M	2764.5 M
---------	----------------------	----------	-------------------	----------	----------

Output DLIS Files

DEFAULT	FCS ILS PSP 071PUP	FN:59	PRODUCER	27-Oct-2007 15:56	2831.3 M	2761.6 M
---------	--------------------	-------	----------	-------------------	----------	----------

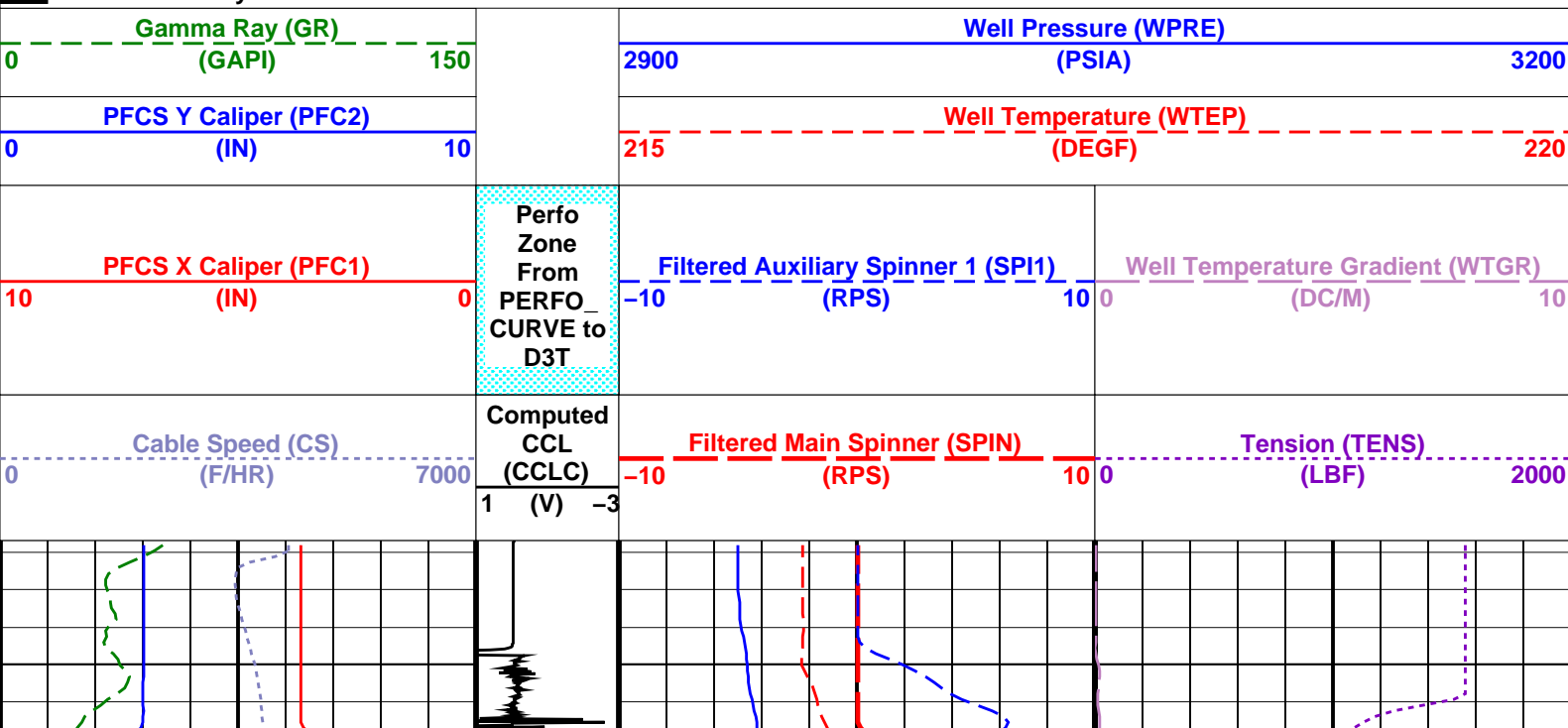
OP System Version: 14C0-302

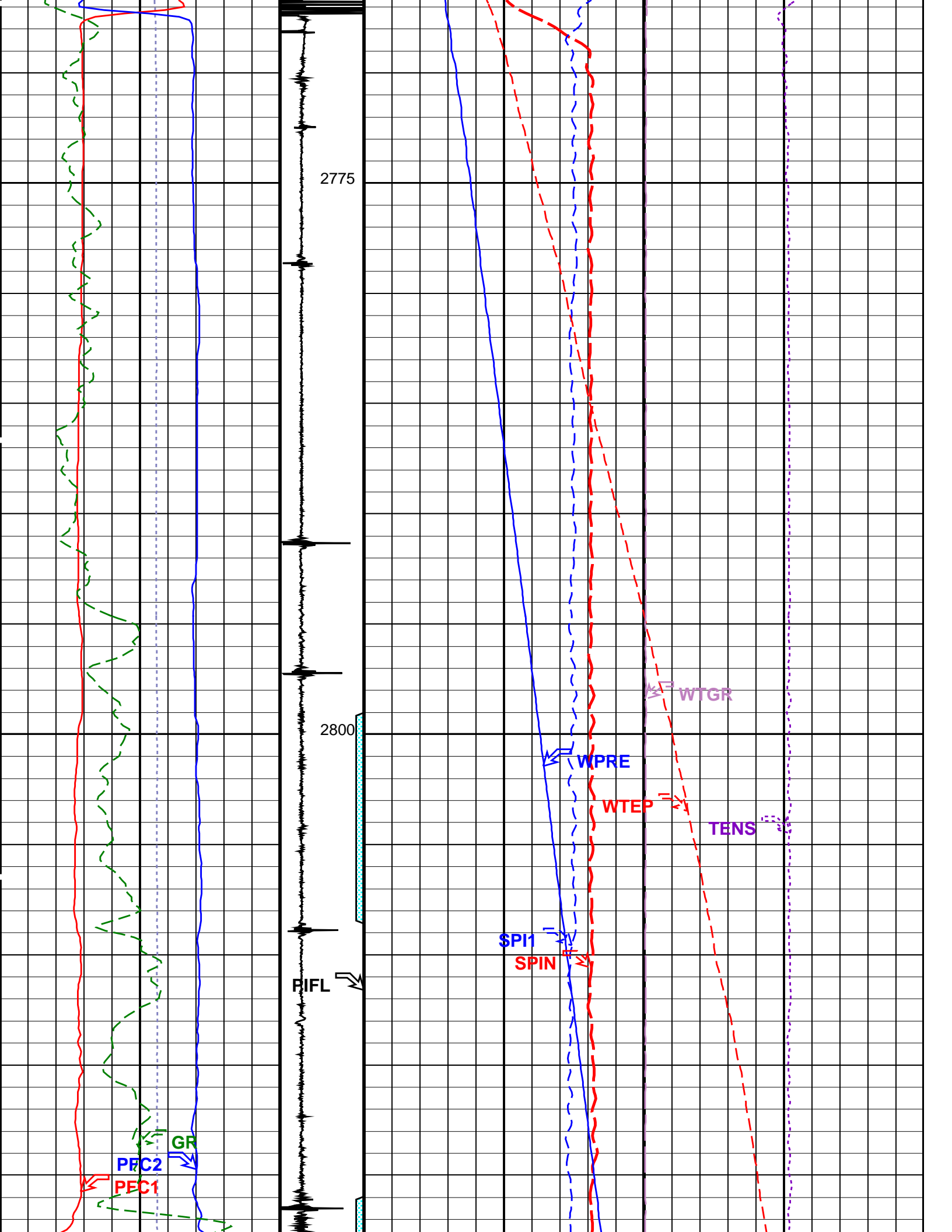
MCM

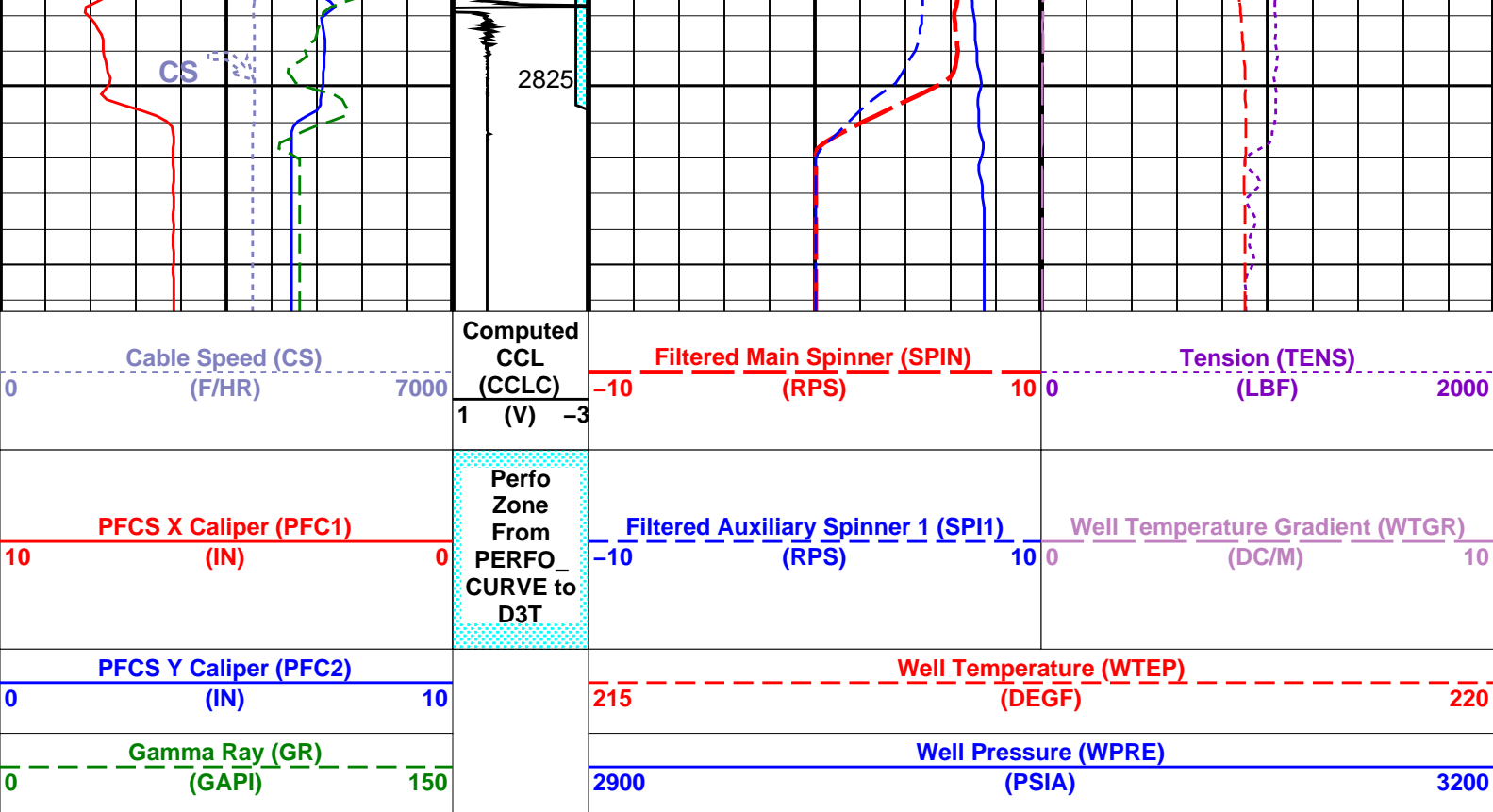
PFCs-A	14C0-302	PILS-A	14C0-302
PSPT-A/B	14C0-302		

PIP SUMMARY

Time Mark Every 60 S







PIP SUMMARY

Time Mark Every 60 S

Format: PSP_1 Vertical Scale: 1:200

Graphics File Created: 27-Oct-2007 15:56

OP System Version: 14C0-302

MCM

PFCS-A 14C0-302
PSPT-A/B 14C0-302

PILS-A 14C0-302

Parameters

DLIS Name	Description	Value
PFCS-A: PSP Flow and caliper Tool		
AMOD	Spinner Filter Averaging Mode	LINEAR_AVERAGE
SDCF	Spinner Depth Constant Filter	6
SPI1	Auxiliary Spinner 1 Flowmeter Sonde	PILS-A
SPIN	Main Spinner Flowmeter Sonde	PFCS-A_3.5
PILS-A: PSP In Line Spinner Flowmeter		
AMOD	Spinner Filter Averaging Mode	LINEAR_AVERAGE
SDCF	Spinner Depth Constant Filter	6
SPI1	Auxiliary Spinner 1 Flowmeter Sonde	PILS-A
SPIN	Main Spinner Flowmeter Sonde	PFCS-A_3.5
System and Miscellaneous		
DO	Depth Offset for Playback	-3.3 M
PP	Playback Processing	NORMAL

Input DLIS Files

DEFAULT	FLIP_FCS_ILS_PSP_027	PRODUCER	27-Oct-2007 03:26	2834.5 M	2764.5 M
---------	----------------------	----------	-------------------	----------	----------

Output DLIS Files

DEFAULT	FCS_ILS_PSP_071PUP	FN:59	PRODUCER	27-Oct-2007 15:56
---------	--------------------	-------	----------	-------------------

MAXIS Field Log

Calibration and Check Summary

Measurement	Nominal	Master	Before	After	Change	Limit	Units
-------------	---------	--------	--------	-------	--------	-------	-------

PSP Flow and caliper Tool Wellsite Calibration – PFCS Caliper Calibration

Before: 26-Oct-2007 10:32

PFCS CaliperX Small Ring	5.500	N/A	5.270	N/A	N/A	N/A	IN
PFCS CaliperX Large Ring	8.000	N/A	7.845	N/A	N/A	N/A	IN
PFCS CaliperY Small Ring	5.500	N/A	5.705	N/A	N/A	N/A	IN
PFCS CaliperY Large Ring	8.000	N/A	8.224	N/A	N/A	N/A	IN

Production Services Logging Platform Wellsite Calibration – Detector Calibration

Before: 26-Oct-2007 10:33

Gamma-Ray Jig-Bkg	125.0	N/A	119.2	N/A	N/A	N/A	GAPI
-------------------	-------	-----	-------	-----	-----	-----	------

PSP Flow and caliper Tool / Equipment Identification

Primary Equipment:

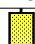
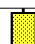

PFCS Cartridge	PFCC – A	796	796
PFCS Caliper	Cali –	796	796
PFCS Relative Bearing	Rela –	796	796
PFCS 3.5 Spinner Diameter	Spin –	796	796
PFCS Fluid Holdup Electric Probes	Hold –	796	796

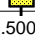
Auxiliary Equipment:

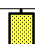
PFCS Cartridge Housing	PFCH – A	796	796
------------------------	----------	-----	-----

PSP Flow and caliper Tool Wellsite Calibration

PFCS Caliper Calibration

Phase	PFCS CaliperX Small Ring IN		Value	Phase	PFCS CaliperX Large Ring IN		Value	Phase	PFCS CaliperY Small Ring IN		Value
Before			5.270	Before			7.845	Before			5.705
	N/A (Minimum)	5.500 (Nominal)	N/A (Maximum)		N/A (Minimum)	8.000 (Nominal)	N/A (Maximum)		N/A (Minimum)	5.500 (Nominal)	N/A (Maximum)

Phase	PFCS CaliperY Large Ring IN		Value
Before			8.224
	N/A (Minimum)	8.000 (Nominal)	N/A (Maximum)

Phase	PFCS CaliperY Large Ring IN	Value
Before		8.224
	N/A (Minimum)	8.000 (Nominal)
		N/A (Maximum)

Before: 26-Oct-2007 10:32

Production Services Logging Platform / Equipment Identification



Primary Equipment:

Production Logging Platform (CQG-F)	PSPT – B	827	827
PSP Basic Measurement Sonde (CQG_F)	PBMS – B	827	827
PSP Basic measurement module	PBMS –	827	827
PSP CCL	CCL –	827	827
PSP GR	GR –	827	827
PSP RTD Well Temperature	RTD_ –	827	827
PSP Crystal Quartz Gauge Type F	CQG_ –	827	827
PSP Telemetry and bus master cartridge	PSTC –	806	806

Auxiliary Equipment:

Production Services Logging Platform Wellsite Calibration

Detector Calibration

Phase	Gamma-Ray Background GAPI	Value	Phase	Gamma-Ray Jig-Bkg GAPI	Value
Before		2.620	Before		119.2

0 (Minimum)	30.00 (Nominal)	120.0 (Maximum)	110.0 (Minimum)	125.0 (Nominal)	140.0 (Maximum)
Before: 26-Oct-2007 10:33					

Company:

Well:

Field:

Rig :

Country:

Esso Australia Pty Ltd.

W-5

West Kingfish

Prod4 / Crane

Australia

Schlumberger

PLT

Survey