

Company: Esso Australia Pty Ltd

Well: BTA A-3W

Field: Barracouta

Rig: Crane / Prod 2

Country: Australia

2 1/8" Power Enerjet  
Perforation Record  
25-Oct-2007

Rig: Crane / Prod 2  
Field: Barracouta  
Location: Gippsland  
Well: BTA A-3W  
Company: Esso Australia Pty Ltd

LOCATION			
Gippsland		Elev.:	K.B. 55.9 m
Basin			G.L. -45.7 m
Bass Strait			D.F. 55.9 m
Permanent Datum:	MSL	Elev.:	0 m
Log Measured From:	DF	55.9 m	above Perm. Datum
Drilling Measured From:	DF		
State:	Max. Well Deviation	Longitude	Latitude
Victoria	2 deg	147° 46' 15" E	38° 17' 53" S

Logging Date	25-Oct-2007		
Run Number	1		
Depth Driller	3212 m		
Schlumberger Depth	2750 m		
Bottom Log Interval	2708 m		
Top Log Interval	2703 m		
Casing Fluid Type	Brine		
Salinity			
Density	8.55 lbm/gal		
Fluid Level			
BIT/CASING/TUBING STRING			
Bit Size	12.250 in		
From	797.02 m		
To	3212 m		
Casing/Tubing Size	7.000 in		
Weight	29 lbm/ft		
Grade	L-80		
From	33.5 m		
To	3171 m		
Maximum Recorded Temperatures	262 degF		
Logger On Bottom	25-Oct-2007	Time	16:14
Unit Number	3827	AUSL	
Recorded By	C.Rowand, M.Pratt		
Witnessed By	Mr B. Woodward		

			Run 1
Oil Density			
Water Salinity			
Gas Gravity			
Bo			
Bw			
1/Bg			
Bubble Point Pressure			
Bubble Point Temperature			
Solution GOR			
Maximum Deviation			
CEMENTING DATA			
Primary/Squeeze			Primary
Casing String No			
Lead Cement Type			
Volume			
Density			
Water Loss			
Additives			
Tail Cement Type			
Volume			
Density			
Water Loss			
Additives			
Expected Cement Top			
Logging Date			
Run Number			
Depth Driller			
Schlumberger Depth			
Bottom Log Interval			
Top Log Interval			
Casing Fluid Type			
Salinity			
Density			
Fluid Level			
BIT/CASING/TUBING STRING			
Bit Size			
From			
To			
Casing/Tubing Size			
Weight			
Grade			
From			
To			
Maximum Recorded Temperatures			
Logger On Bottom		Time	
Unit Number		Location	
Recorded By			
Witnessed By			

## DEPTH SUMMARY LISTING

Date Created: 25-OCT-2007 9:51:48

### Depth System Equipment

Depth Measuring Device		Tension Device		Logging Cable	
Type:	IDW-E	Type:	CMTD-B/A	Type:	2-32ZT
Serial Number:	727	Serial Number:	1711	Serial Number:	24187
Calibration Date:	20-Sep-2007	Calibration Date:	25-Oct-2007	Length:	6299.91 M
Calibrator Serial Number:	727	Calibrator Serial Number:	1173	Conveyance Method: Wireline Rig Type: Offshore_Fixed	
Calibration Cable Type:	2-32ZT	Calibration Gain:	0.97		
Wheel Correction 1:	-4	Calibration Offset:	-437.00		
Wheel Correction 2:	-3				

### Depth Control Parameters

Log Sequence:	Subsequent Log In the Well
Reference Log Name:	Esso Solar Composite
Reference Log Run Number:	
Reference Log Date:	20-Mar-2001

### Depth Control Remarks

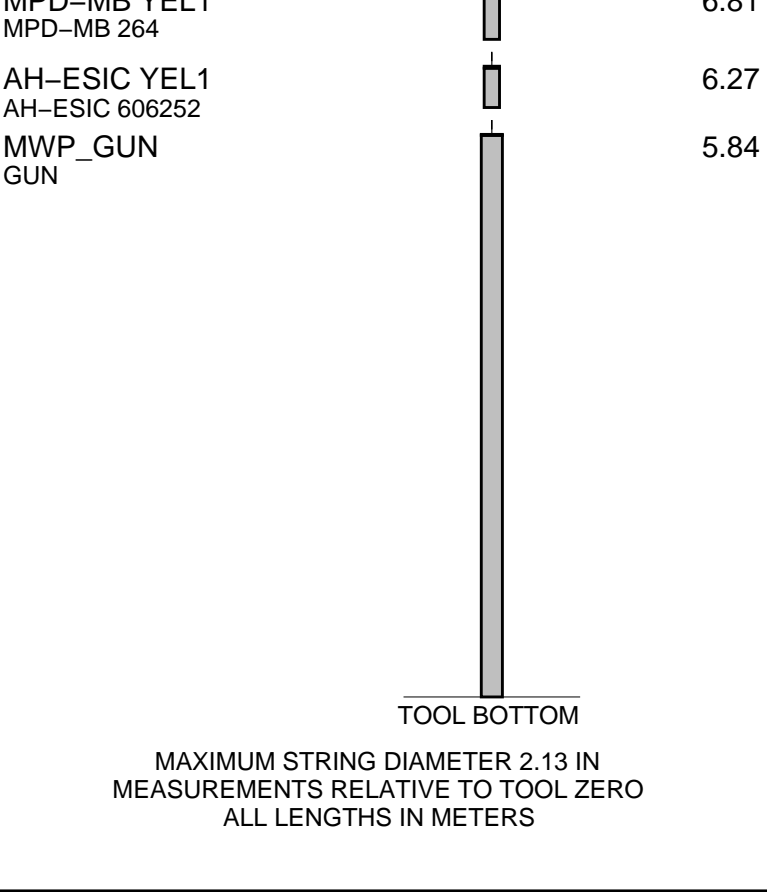
1. IDW used as primary depth control
2. Z Chart used as a secondary depth control
3. Log correlated to Esso Solar Composite Log of 20-Mar-2001, provided by client.
4.
5.
6.

#### DISCLAIMER

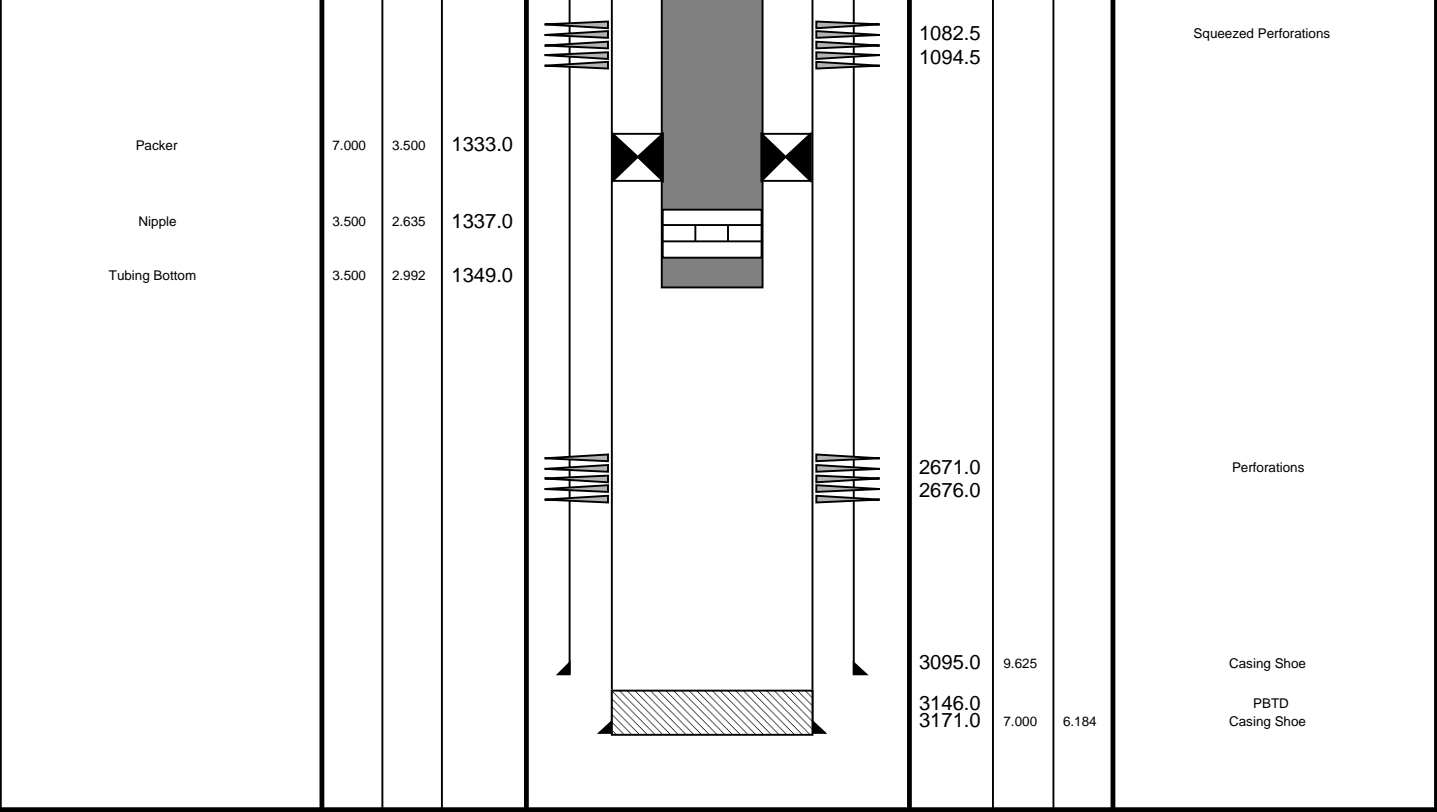
THE USE OF AND RELIANCE UPON THIS RECORDED-DATA BY THE HEREIN NAMED COMPANY (AND ANY OF ITS AFFILIATES, PARTNERS, REPRESENTATIVES, AGENTS, CONSULTANTS AND EMPLOYEES) IS SUBJECT TO THE TERMS AND CONDITIONS AGREED UPON BETWEEN SCHLUMBERGER AND THE COMPANY, INCLUDING: (a) RESTRICTIONS ON USE OF THE RECORDED-DATA; (b) DISCLAIMERS AND WAIVERS OF WARRANTIES AND REPRESENTATIONS REGARDING COMPANY'S USE OF AND RELIANCE UPON THE RECORDED-DATA; AND (c) CUSTOMER'S FULL AND SOLE RESPONSIBILITY FOR ANY INFERENCE DRAWN OR DECISION MADE IN CONNECTION WITH THE USE OF THIS RECORDED-DATA.

OTHER SERVICES1		OTHER SERVICES2	
OS1:	MWPT	OS1:	
OS2:	GR-CCL	OS2:	
OS3:		OS3:	
OS4:		OS4:	
OS5:		OS5:	
REMARKS: RUN NUMBER 1		REMARKS: RUN NUMBER 2	
Log correlated to Solar Composite Log dated: 20-Mar-2001, provided by client.			
Objective: Perforate the interval 2703.0m to 2708.0m MDKB using a			
2 1/8" 6spf, 45 degree phased powerjet perforating gun incorporating GR/CCL.			
Safe Initiated			
Gun 1			
Top shot: 2703.0m MDKB			





Production String	(in)		(m)	Well Schematic	(m)	(in)		Casing String
	OD	ID	MD		MD	OD	ID	
Tubing Hanger	7.000	3.500	39.9			9.625		Casing String Casing String
Tubing	3.500	2.992				7.000	6.184	
SSSV	3.500	2.750	454.0					
Sliding Sleeve	3.500	2.750	874.0					
Packer	7.000	3.500	899.0					
Sliding Sleeve	3.500	275.000	914.0					



# Gun Firing Record

MAXIS Field Log

Company: Esso Australia Pty Ltd Well: BTA A-3W

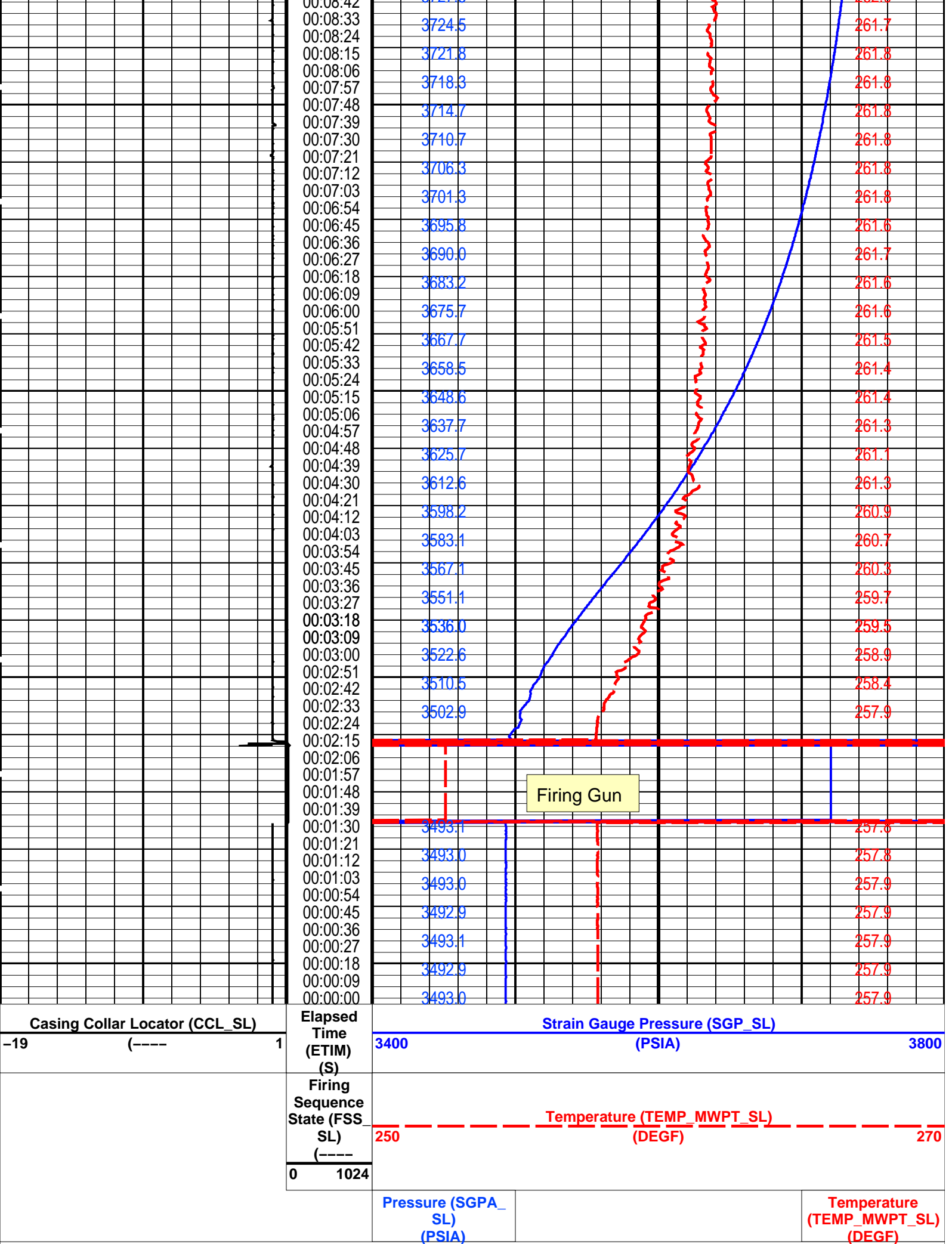
Input DLIS Files						
DEFAULT	PERFO_026LTP	FN:24	PRODUCER	25-Oct-2007 16:51	2699.0 M	2.7 M
Output DLIS Files						
DEFAULT	PERFO_026PTP	FN:31	PRODUCER	25-Oct-2007 17:46	2699.0 M	2.7 M

OP System Version: 15C0-309			
MCM			
MWP_GUN	SRPC-3357-Q2_2007	MWPT-CA	SRPC-3357-Q2_2007
MWGT-AA	SRPC-3357-Q2_2007		

PIP SUMMARY

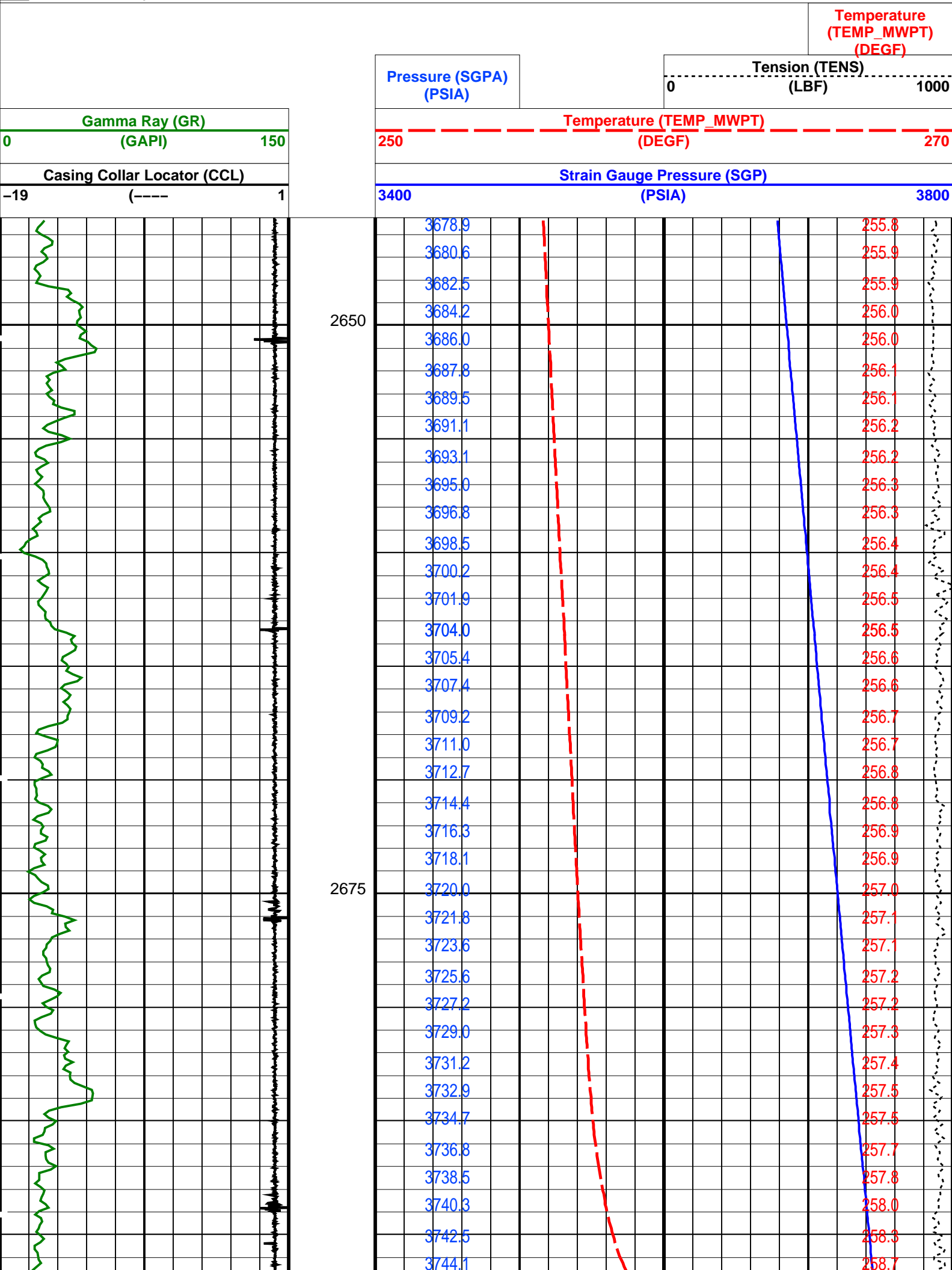
Time Mark Every 60 S

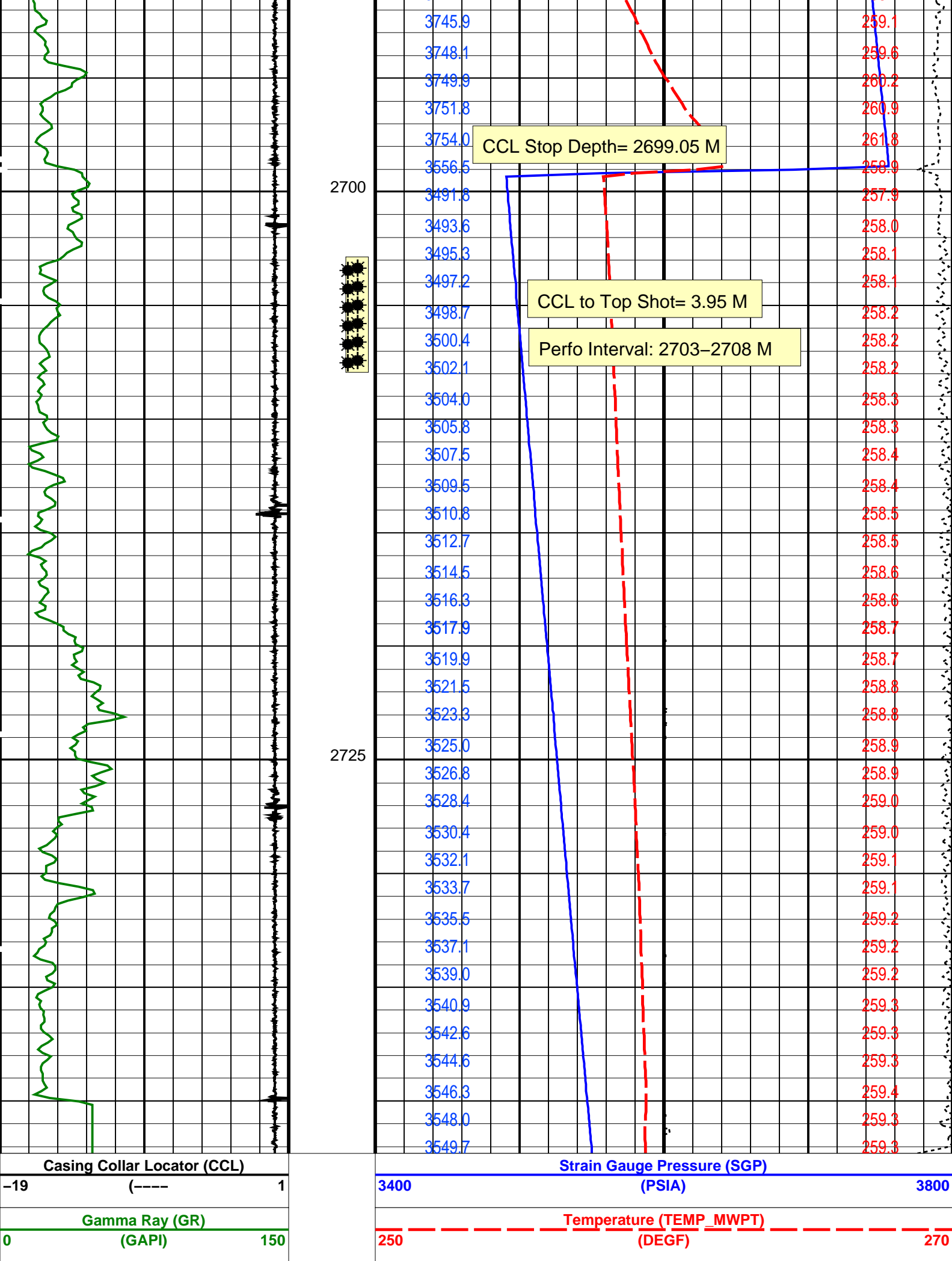
Time Mark Every 60 S										Pressure (SGPA_ SL) (PSIA)		Temperature (TEMP_MWPT_SL) (DEGF)																																																																																																																																																																																																																																																																																																																																																																																																																																																																																																																																																																																																																																																																																																																																																																																																																																																																																																																																																																																																																																																																																																																																																																																																																																																																																																																																																																																																																																																																																																																																																																																																																																																								
										Firing Sequence State (FSS SL) (-----)	Temperature (TEMP_MWPT_SL) (DEGF)																																																																																																																																																																																																																																																																																																																																																																																																																																																																																																																																																																																																																																																																																																																																																																																																																																																																																																																																																																																																																																																																																																																																																																																																																																																																																																																																																																																																																																																																																																																																																																																																																																																									
										250																			270																																																																																																																																																																																																																																																																																																																																																																																																																																																																																																																																																																																																																																																																																																																																																																																																																																																																																																																																																																																																																																																																																																																																																																																																																																																																																																																																																																																																																																																																																																																																																																																																																																							
										0	1024																																																																																																																																																																																																																																																																																																																																																																																																																																																																																																																																																																																																																																																																																																																																																																																																																																																																																																																																																																																																																																																																																																																																																																																																																																																																																																																																																																																																																																																																																																																																																																																																																																																									
Casing Collar Locator (CCL_SL) -19 (-----) 1										Elapsed Time (ETIM) (S)	Strain Gauge Pressure (SGP_SL) (PSIA)																																																																																																																																																																																																																																																																																																																																																																																																																																																																																																																																																																																																																																																																																																																																																																																																																																																																																																																																																																																																																																																																																																																																																																																																																																																																																																																																																																																																																																																																																																																																																																																																																																																									
											3400																			3800																																																																																																																																																																																																																																																																																																																																																																																																																																																																																																																																																																																																																																																																																																																																																																																																																																																																																																																																																																																																																																																																																																																																																																																																																																																																																																																																																																																																																																																																																																																																																																																																																																						
										00:17:00	3755.3																																																																																																																																																																																																																																																																																																																																																																																																																																																																																																																																																																																																																																																																																																																																																																																																																																																																																																																																																																																																																																																																																																																																																																																																																																																																																																																																																																																																																																																																																																																																																																																																																																																									



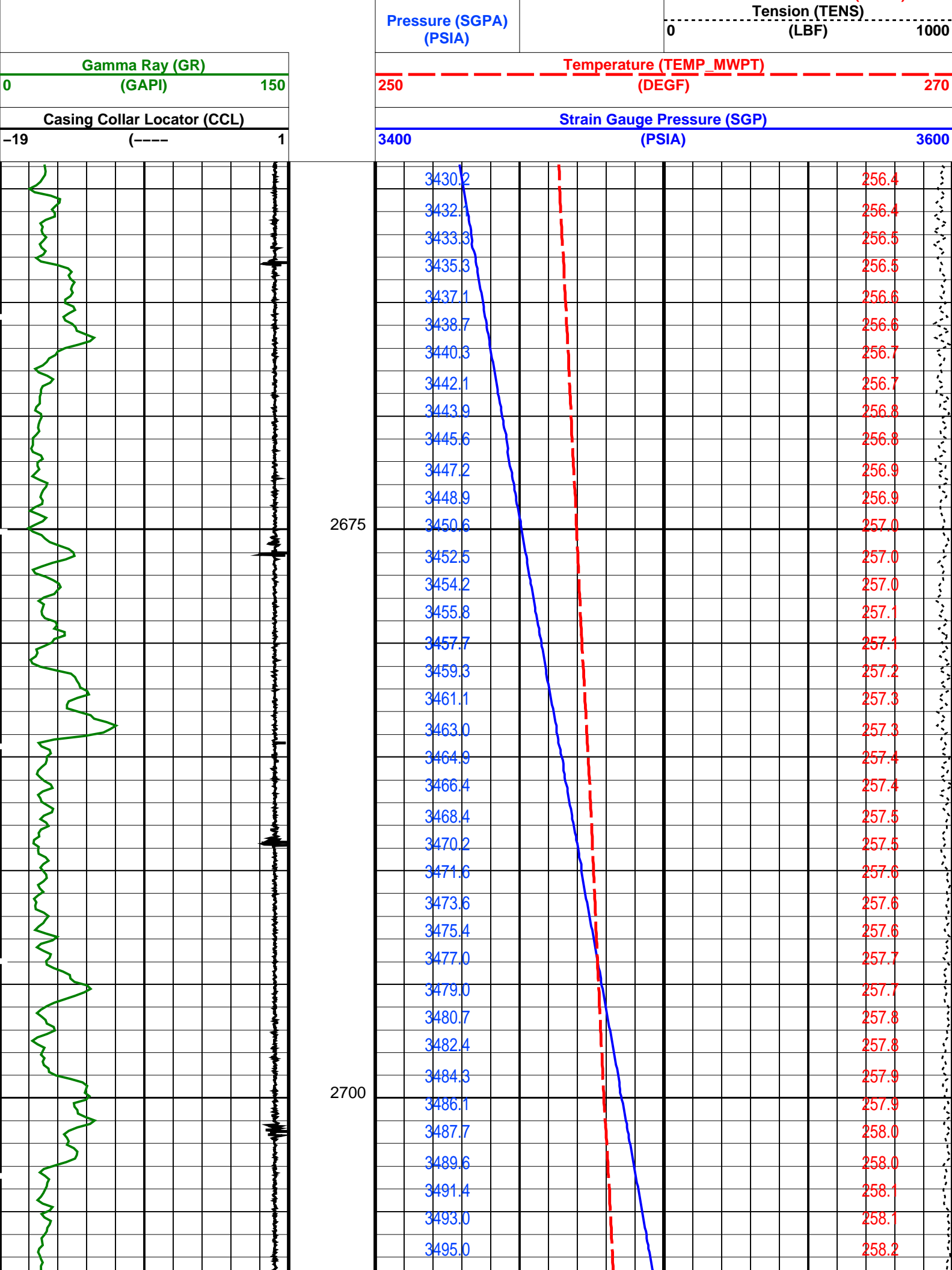


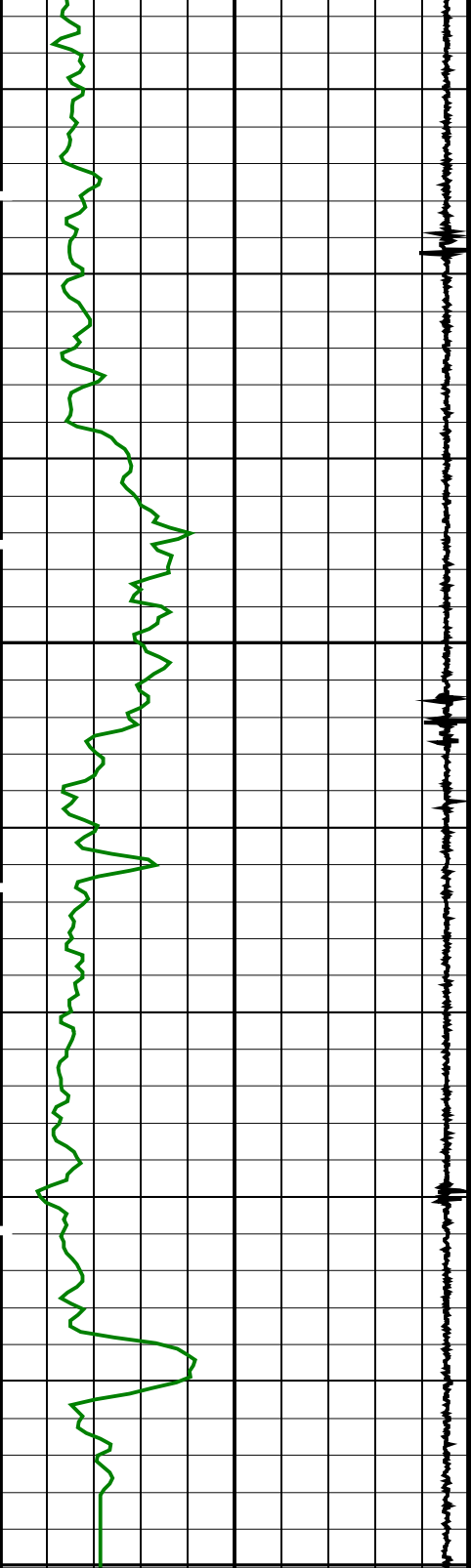




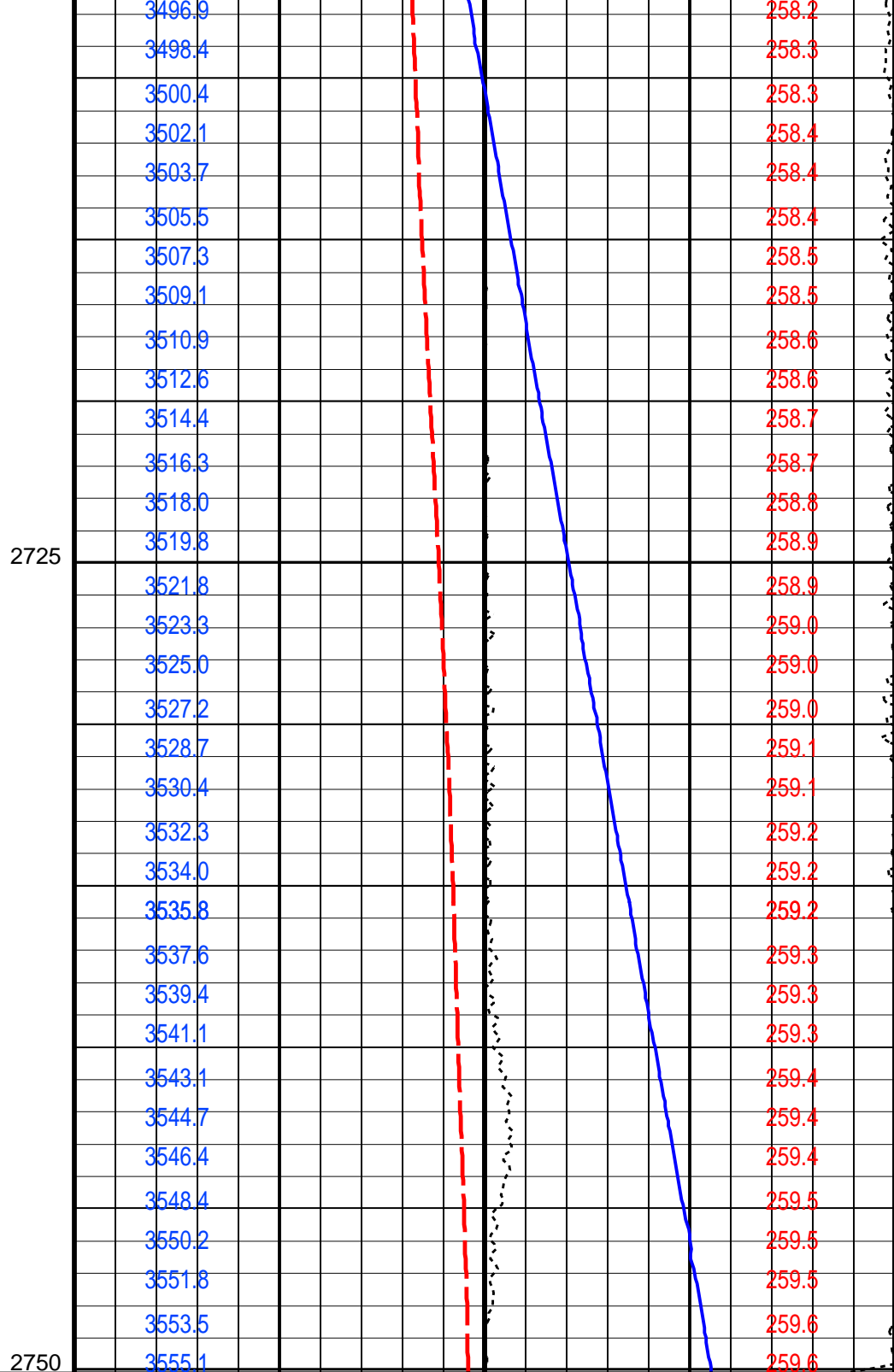


Pressure (SGPA) (PSIA)		Tension (TENS) (LBF)		01000	
				Temperature (TEMP_MWPT) (DEGE)	
PIP SUMMARY					
Time Mark Every 60 S					
Parameters					
DLIS Name		Description		Value	
MWPT-CA: MEASUREMENT WHILE PERFORATING TOOL					
DEVI_FL_CORR		Deviation Angle for Flow Line Correction		0	DEG
FLD		Flow Line Density		1	G/C3
MWPT_NULL_SOURCE		MWPT NULL Temperature Source		TEMS	
MWPT_NULL_TEMP		MWPT NULL Temperature		0.0	DEGC
System and Miscellaneous					
DO		Depth Offset for Playback		0.0	M
PP		Playback Processing		NORMAL	
Format: MWP		Vertical Scale: 1:200		Graphics File Created: 25-Oct-2007 17:44	
OP System Version: 15C0-309					
MCM					
MWP_GUN		SRPC-3357-Q2_2007		MWPT-CA SRPC-3357-Q2_2007	
MWGT-AA		SRPC-3357-Q2_2007			
Input DLIS Files					
DEFAULT		PERFO_025LUP		FN:23 PRODUCER 25-Oct-2007 16:37	2742.3 M 2644.7 M
Output DLIS Files					
DEFAULT		PERFO_025PUP		FN:30 PRODUCER 25-Oct-2007 17:44	
Schlumberger					
Gun Correlation Pass					
MAXIS Field Log					
Company: Esso Australia Pty Ltd Well: BTA A-3W					
Input DLIS Files					
DEFAULT		PERFO_024LUP		FN:22 PRODUCER 25-Oct-2007 16:21	2750.1 M 2658.3 M
Output DLIS Files					
DEFAULT		PERFO_024PUP		FN:29 PRODUCER 25-Oct-2007 17:37	2750.1 M 2658.8 M
OP System Version: 15C0-309					
MCM					
MWP_GUN		SRPC-3357-Q2_2007		MWPT-CA SRPC-3357-Q2_2007	
MWGT-AA		SRPC-3357-Q2_2007			
PIP SUMMARY					
Time Mark Every 60 S					
				Temperature (TEMP_MWPT) (DEGE)	





Casing Collar Locator (CCL)  
-19 (----) 1  
Gamma Ray (GR)  
0 (GAPI) 150



2725  
2750  
Strain Gauge Pressure (SGP)  
3400 (PSIA) 3600

Temperature (TEMP\_MWPT)  
250 (DEGF) 270

Pressure (SGPA)  
(PSIA)

Tension (TENS)  
(LBF) 0 1000

Temperature  
(TEMP\_MWPT)  
(DEGF)

PIP SUMMARY

Time Mark Every 60 S

Parameters

DLIS Name	Description	Value
MWPT-CA: MEASUREMENT WHILE PERFORATING TOOL		
DEVI_FL_CORR	Deviation Angle for Flow Line Correction	0 DEG
FLD	Flow Line Density	1 G/C3
MWPT_NULL_SOURCE	MWPT NULL Temperature Source	TEMS
MWPT_NULL_TEMP	MWPT NULL Temperature	0.0 DEGC
System and Miscellaneous		
DO	Depth Offset for Playback	0.0 M
PP	Playback Processing	NORMAL

Company: **Esso Australia Pty Ltd**

**Schlumberger**

Well: **BTA A-3W**

Field: **Barracouta**

Rig: **Crane / Prod 2**

Country: **Australia**

2 1/8" Power Enerjet  
Perforation Record  
25-Oct-2007