

[illegible]

Company: Esso Australia Pty Ltd.

Well: A-26
Field: Flounder
Rig : Prod4 / Crane
Country: Australia

2 1/8" Phased Powerjet	
Mwpt Perforation	
5" Mpbp Plug	
LOCATION	
Gippsland Basin Bass Strait	Elev.: K.B. 34.2 m G.L. -94 m D.F. 34.2 m
Permanent Datum: _____ Log Measured From: D.F. _____ Drilling Measured From: D.F. _____	Elev.: 0 m 34.2 m above Perm. Datum
State: Victoria	Max. Well Deviation 28 deg Longitude 148 18'17.12"E Latitude 038 18'44.65"S

Logging Date	18-Oct-2007		
Run Number	2 thru 4		
Depth Driller	2694 m		
Schlumberger Depth	2694 m		
Bottom Log Interval	2685 m		
Top Log Interval	2625 m		
Casing Fluid Type	Production Fluids		
Salinity			
Density			
Fluid Level	1418 m		
BIT/CASING/TUBING STRING			
Bit Size	8.000 in		
From			
To			
Casing/Tubing Size	5.000 in		
Weight	18 lbm/ft		
Grade	13Cr80		
From	1214 m		
To	2787.54 m		
Maximum Recorded Temperatures	231 degf		
Logger On Bottom	18-Oct-2007		12:00
Unit Number	889	Prod4 / Ausl	
Recorded By	G Wright.		
Witnessed By	G Rimmer.		

	Run 1
Oil Density	
Water Salinity	
Gas Gravity	
Bo	
Bw	
1/Bg	
Bubble Point Pressure	
Bubble Point Temperature	
Solution GOR	
Maximum Deviation	28 deg
CEMENTING DATA	
Primary/Squeeze	Primary
Casing String No	
Lead Cement Type	
Volume	
Density	
Water Loss	
Additives	
Tail Cement Type	
Volume	
Density	
Water Loss	
Additives	
Expected Cement Top	
Logging Date	
Run Number	
Depth Driller	
Schlumberger Depth	
Bottom Log Interval	
Top Log Interval	
Casing Fluid Type	
Salinity	
Density	
Fluid Level	
BIT/CASING/TUBING STRING	
Bit Size	
From	
To	
Casing/Tubing Size	
Weight	
Grade	
From	
To	
Maximum Recorded Temperatures	
Logger On Bottom	
Unit Number	
Recorded By	
Witnessed By	

DEPTH SUMMARY LISTING

Date Created: 15-OCT-2007 11:41:57

Depth System Equipment

Depth Measuring Device	Tension Device	Logging Cable
Type: IDW-EB Serial Number: 6373 Calibration Date: 04-Jan-2007 Calibrator Serial Number: 9 Calibration Cable Type: 2-32ZT Wheel Correction 1: -2 Wheel Correction 2: -4	Type: PSDS/OSDS Serial Number: 325357 Calibration Date: 10-Oct-2007 Calibrator Serial Number: 1174 Calibration Gain: 0.89 Calibration Offset: 180.00	Type: 2-32ZT Serial Number: 24425 Length: 5584.85 M Conveyance Method: Wireline Rig Type: Rigless

Depth Control Parameters

Log Sequence:	Subsequent Trip To the Well
Reference Log Name:	Solar Log
Reference Log Run Number:	1
Reference Log Date:	03-Feb-2002
Subsequent Trip Down Log Correction:	

Depth Control Remarks

1. IDW-EB 6373 used as primary depth control.
2. Z-Chart used as back-up.
3.
4.
5.
6.

DISCLAIMER

THE USE OF AND RELIANCE UPON THIS RECORDED-DATA BY THE HEREIN NAMED COMPANY (AND ANY OF ITS AFFILIATES, PARTNERS, REPRESENTATIVES, AGENTS, CONSULTANTS AND EMPLOYEES) IS SUBJECT TO THE TERMS AND CONDITIONS AGREED UPON BETWEEN SCHLUMBERGER AND THE COMPANY, INCLUDING: (a) RESTRICTIONS ON USE OF THE RECORDED-DATA; (b) DISCLAIMERS AND WAIVERS OF WARRANTIES AND REPRESENTATIONS REGARDING COMPANY'S USE OF AND RELIANCE UPON THE RECORDED-DATA; AND (c) CUSTOMER'S FULL AND SOLE RESPONSIBILITY FOR ANY INFERENCE DRAWN OR DECISION MADE IN CONNECTION WITH THE USE OF THIS RECORDED-DATA.

OTHER SERVICES1
OS1: RST-C
OS2: Sigma
OS3:
OS4:
OS5:
REMARKS: RUN NUMBER 1
Log correlated to Solar composite dated 03-Feb-2002.
Maximum well deviation = 28 degree's at 772m MDKB.
Run one was an RST-C Sigma survey to determine the new perforation zone.
Run two,perforated 2682m to 2683m MDKB using 2 1/8"
Powerjet,6 spf,45 degree phased gun with MWPT.
SBHP = 3081 psia,SBHT = 230 degf.
Run 3.5" Mpbtp plug set at 2688m MDKB.

HUD = 2686.8m MDKB.

Crew : A Hall & C Shiells.

RUN 1 SERVICE ORDER #: Ausl07509085 PROGRAM VERSION: 14C0-302 FLUID LEVEL: 1418 m			RUN 2		
LOGGED INTERVAL	START	STOP	LOGGED INTERVAL	START	STOP

RUN 1

RUN 2

SURFACE EQUIPMENT

MWPM-AA 3008

SURFACE EQUIPMENT

MWPM-AA 3008

DOWNHOLE EQUIPMENT

AH-SWBS 731
AH-SWBS 731

11.95

AH-SWBS 761
AH-SWBS 761

11.27

AH-SWBS 762
AH-SWBS 762

10.58

AH-SWBS 763
AH-SWBS 763

9.90

MH-SWHS 753
MH-SWHS 753

9.21

MWGT-AA 69
MWPG-AA 24029
MWGH-AA 69

8.88

MWPG GR

2.41

MWPT-CA 74
MWPH-AA 74
MWPS-AA 74

7.90

CCL
SMWP Pres
SMWP Temp
Tension

____ TOOL ZERO

SAH-G 1047
SAH-G 1047

5.08

DOWNHOLE EQUIPMENT

AH-SWBS 731
AH-SWBS 731

9.21

AH-SWBS 761
AH-SWBS 761

8.52

AH-SWBS 762
AH-SWBS 762

7.84

AH-SWBS 763
AH-SWBS 763

7.15

MH-SWHS 753
MH-SWHS 753

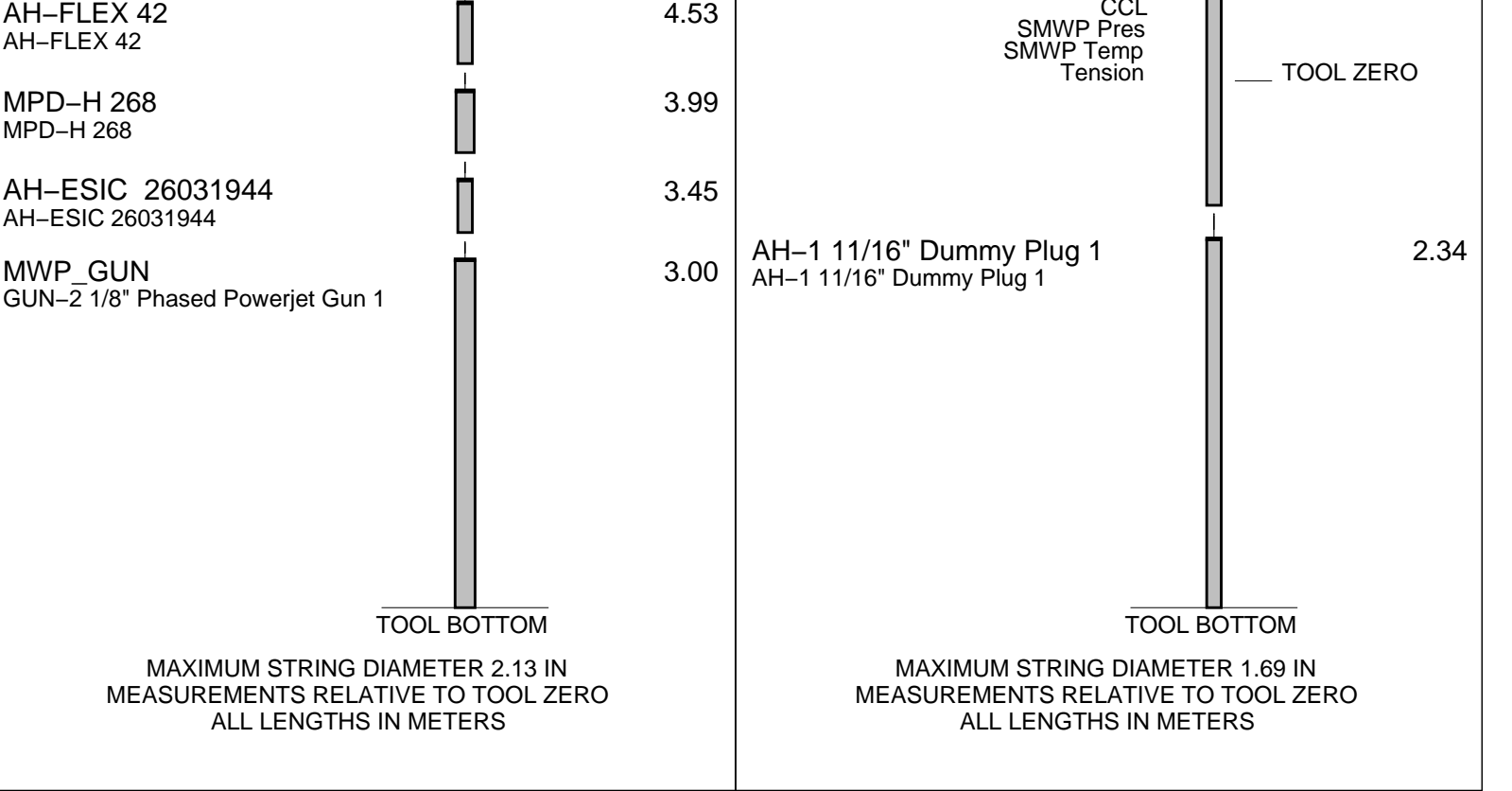
6.46

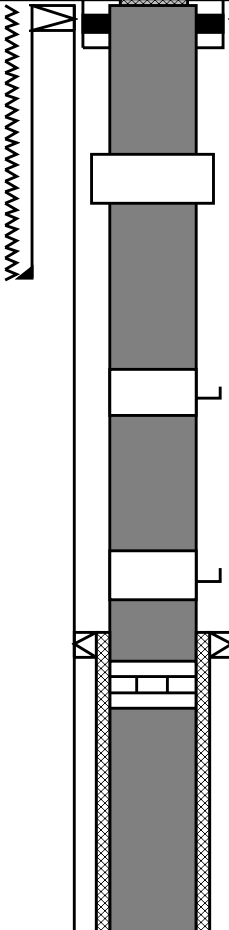
MWPG GR

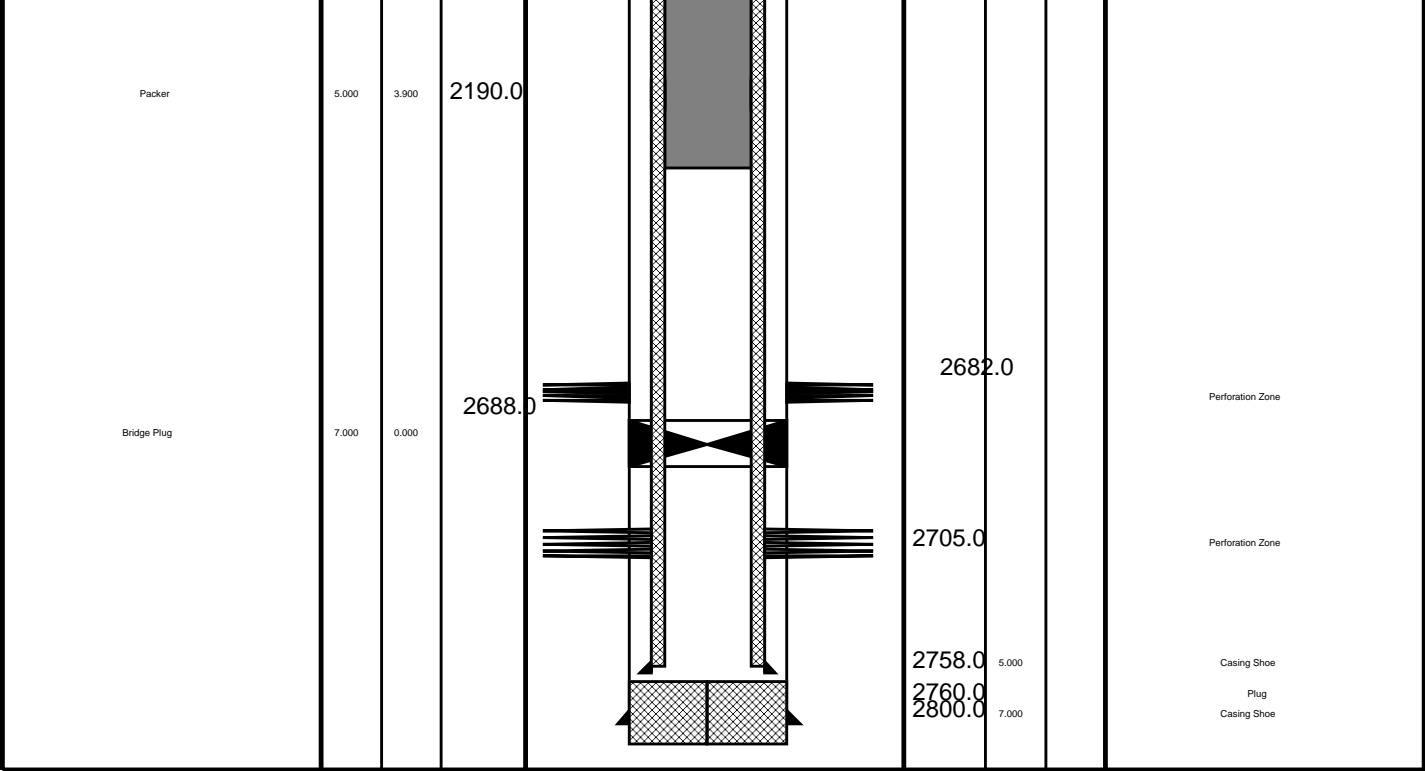
2.41

MWPT-CA 74
MWPH-AA 74
MWPS-AA 74

5.16



Production String	(in)		(m)	Well Schematic	(m)	(in)		Casing String
	OD	ID	MD		MD	OD	ID	
Tubing Hanger	6.270	3.000	12.0		18.0	12.900		<div>Casing String</div> <div>Liner Hanger</div> <div>Surface Casing</div> <div>Scab Liner</div>
Tubing	3.900		13.0		15.0	7.000	10.750	
SSSV	5.400	2.750	455.0		629.0	10.750		
Gas Lift Mandrel	3.900		835.0					
Gas Lift Mandrel	3.900		1201.0					
Landing Nipple	3.900		1217.0		1210.0	5.000		



Job Event Summary

MAXIS Field Log

Schlumberger Job Event Summary

Time	Elapsed Time	Depth (M)	File
Log Pass (down)	18-Oct-2007 8:41 001:12	-5.3 - 2692.8	RST_PSP_005LDP
Log Pass (up)	18-Oct-2007 9:54 000:06	2698.9 - 2640.3	RST_PSP_006LUP
Log Pass (up)	18-Oct-2007 10:10 000:12	2697.0 - 2638.3	RST_PSP_008LUP
Log Pass (up)	18-Oct-2007 10:23 000:11	2698.5 - 2641.1	RST_PSP_009LUP
Log Pass (up)	18-Oct-2007 10:35 000:11	2697.0 - 2640.8	RST_PSP_010LUP
Log Pass (up)	18-Oct-2007 10:49 000:11	2695.8 - 2640.9	RST_PSP_011LUP
Log Pass (up)	18-Oct-2007 11:03 000:11	2696.9 - 2635.6	RST_PSP_012LUP
Log Pass (up)	18-Oct-2007 11:16 000:11	2696.9 - 2638.7	RST_PSP_013LUP
Log Pass (up)	18-Oct-2007 11:30 000:59	2569.5 - -5.0	RST_PSP_014LUP
Simulated Log	18-Oct-2007 15:01 000:02	PERFO_022LUP	
Log Pass (down)	18-Oct-2007 15:41 000:20	855.4 - 2697.2	PERFO_025LDP
Log Pass (up)	18-Oct-2007 16:01 000:03	2697.0 - 2666.7	PERFO_026LUP
Log Pass (up)	18-Oct-2007 16:07 000:06	2690.0 - 2659.2	PERFO_028LUP
Log Pass (up)	18-Oct-2007 16:13 000:18	2685.0 - 2647.0	PERFO_029LUP
Station Log	18-Oct-2007 16:17 000:10	2678.6 - 1.5	PERFO_030LTP
Log Pass (down)	18-Oct-2007 17:31 000:51	-0.2 - 2695.0	PERFO_034LDP
Log Pass (up)	18-Oct-2007 18:23 000:09	2695.0 - 2617.5	PERFO_035LUP

Log Pass (up) 18-Oct-2007 18:23 000:03 2633.6 - -2077.3 PERFO_035LUP
Log Pass (up) 18-Oct-2007 18:47 000:31 1833.1 - -5.2 PERFO_037LUP
Simulated Log 19-Oct-2007 6:53 000:24 CCL_039LUP
Simulated Log 19-Oct-2007 7:31 000:04 CCL_040LUP
Log Pass (down) 19-Oct-2007 7:54 000:52 -2.7 - 2210.1 CCL_041LDP
Log Pass (down) 19-Oct-2007 8:48 000:11 2212.2 - 2607.3 CCL_042LDP
Log Pass (down) 19-Oct-2007 8:59 000:05 2605.4 - 2681.3 CCL_043LDP
Simulated Log 19-Oct-2007 9:09 000:15 CCL_044LUP
Log Pass (up) 19-Oct-2007 9:25 000:13 2681.3 - 2144.9 CCL_045LUP
Log Pass (up) 19-Oct-2007 9:47 000:29 1533.1 - -9.8 CCL_048LUP
Simulated Log 19-Oct-2007 10:50 000:01 PERFO_050LUP
Log Pass (down) 19-Oct-2007 11:08 000:25 -1.1 - 2684.7 PERFO_051LDP
Log Pass (up) 19-Oct-2007 11:33 000:04 2684.7 - 2629.1 PERFO_052LUP
Log Pass (up) 19-Oct-2007 11:40 000:23 2386.4 - -6.1 PERFO_054LUP
Simulated Log 20-Oct-2007 6:43 000:15 PERFO_057LUP
Log Pass (down) 20-Oct-2007 7:11 000:25 -1.1 - 2683.7 PERFO_058LDP
Log Pass (up) 20-Oct-2007 7:37 000:05 2683.6 - 2642.6 PERFO_059LUP

Schlumberger

Cement Dump Pass

MAXIS Field Log

Input DLIS Files

DEFAULT PERFO_059LUP FN:57 PRODUCER 20-Oct-2007 07:37 2683.6 M 2642.6 M

Output DLIS Files

DEFAULT PERFO_060PUP FN:58 PRODUCER 20-Oct-2007 07:42 2681.6 M 2641.1 M

OP System Version: 14C0-302

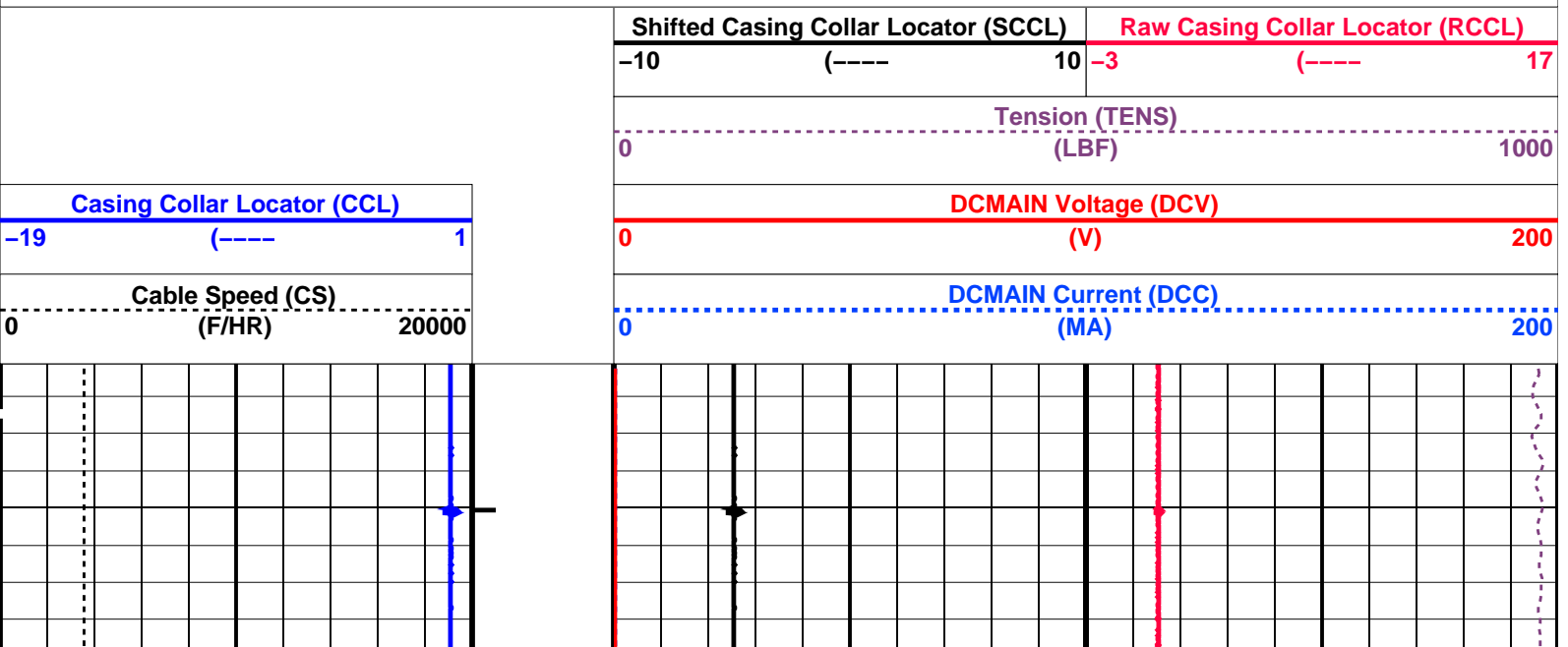
MCM

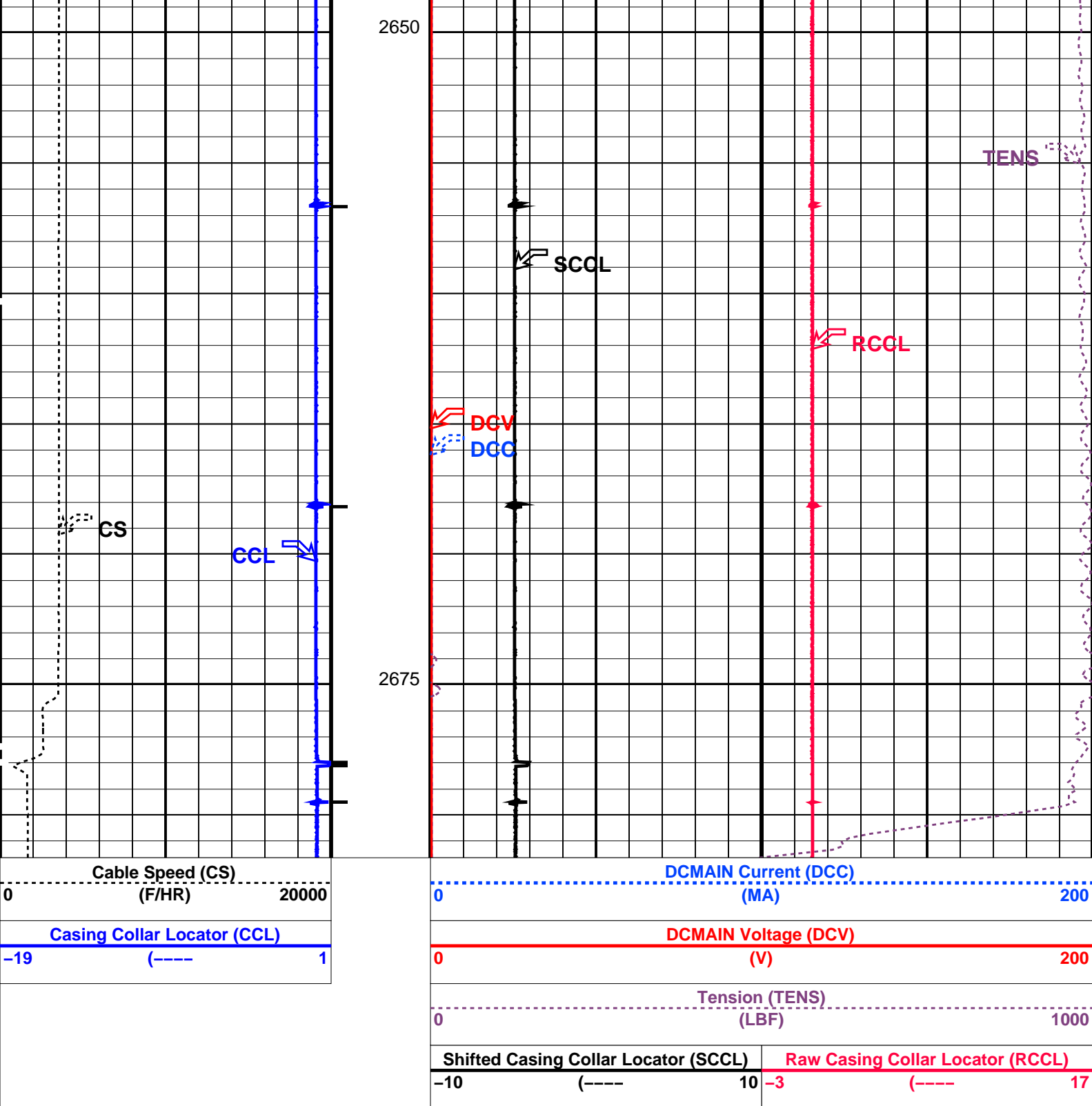
SHM_GUN 14C0-302 CCL-L 14C0-302

PIP SUMMARY

└─ Casing Collars

Time Mark Every 60 S





PIP SUMMARY

← Casing Collars

Time Mark Every 60 S

Parameters

DLIS Name	Description	Value
CCLD	CCL-L: Casing Collar Locator	12 IN
CCLT	CCL reset delay	0.3 V
	CCL Detection Level	
	System and Miscellaneous	
DO	Depth Offset for Playback	-2.0 M
PP	Playback Processing	NORMAL

Format: PERFO Vertical Scale: 1:200

Graphics File Created: 20-Oct-2007 07:42

SHM_GUN		14C0-302		MCM		CCL-L		14C0-302	
Input DLIS Files									
DEFAULT	PERFO_059LUP	FN:57	PRODUCER	20-Oct-2007 07:37	2683.6 M	2642.6 M			
Output DLIS Files									
DEFAULT	PERFO_060PUP	FN:58	PRODUCER	20-Oct-2007 07:42					

Schlumberger

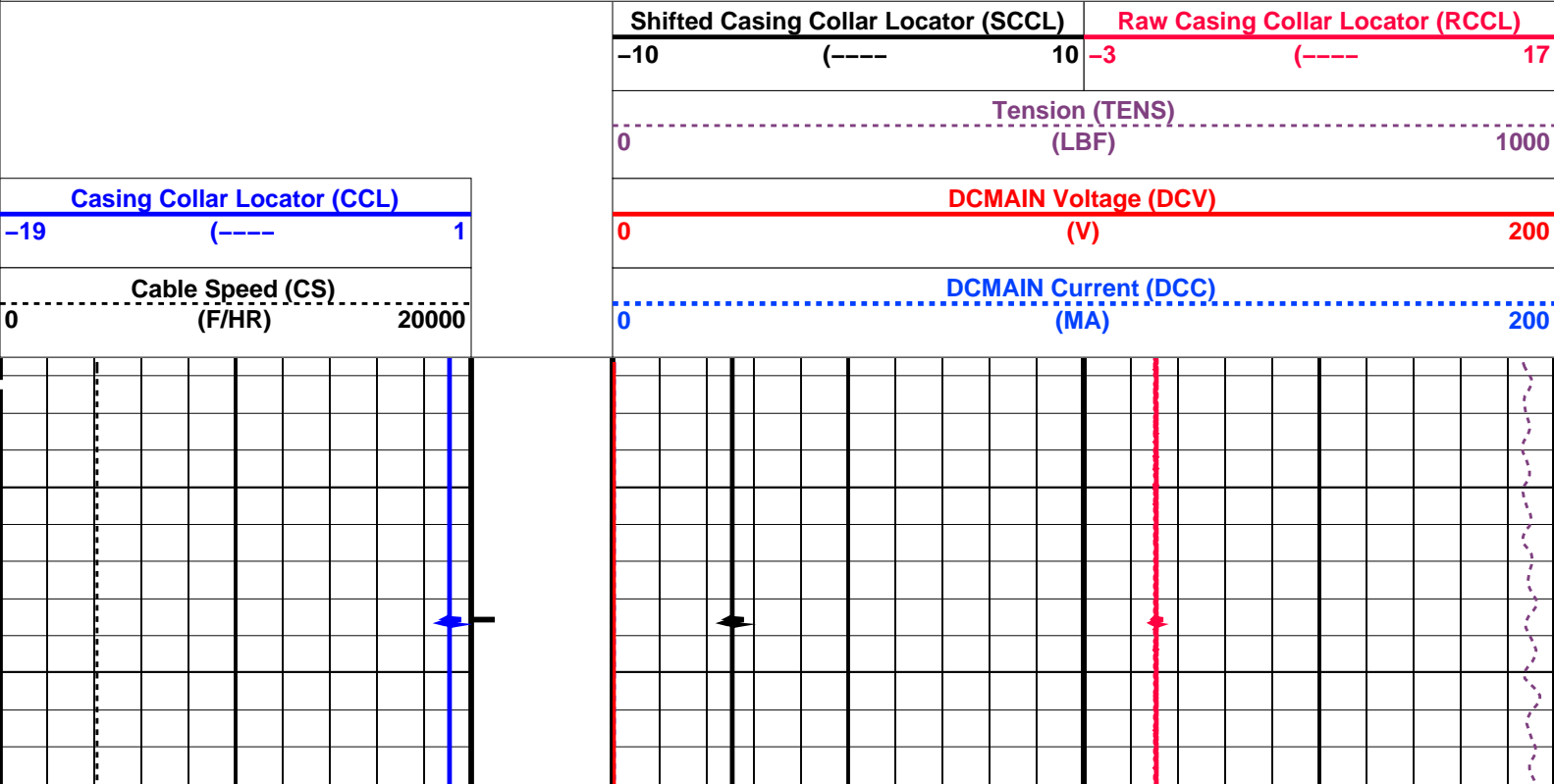
Water Dump Pass

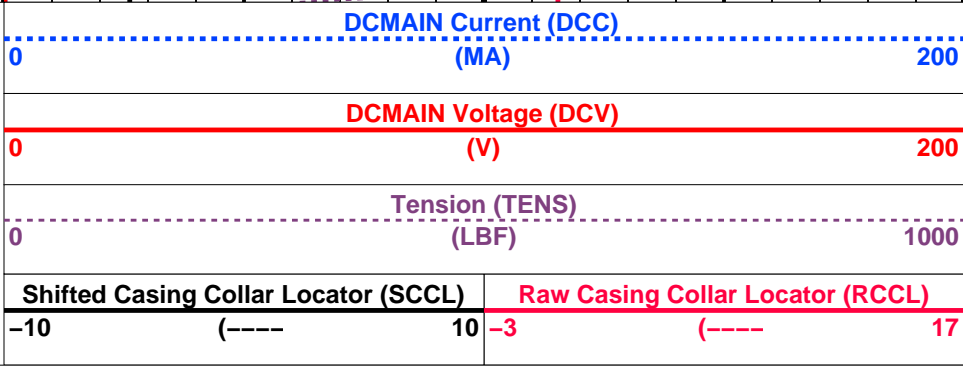
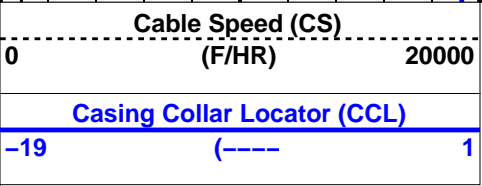
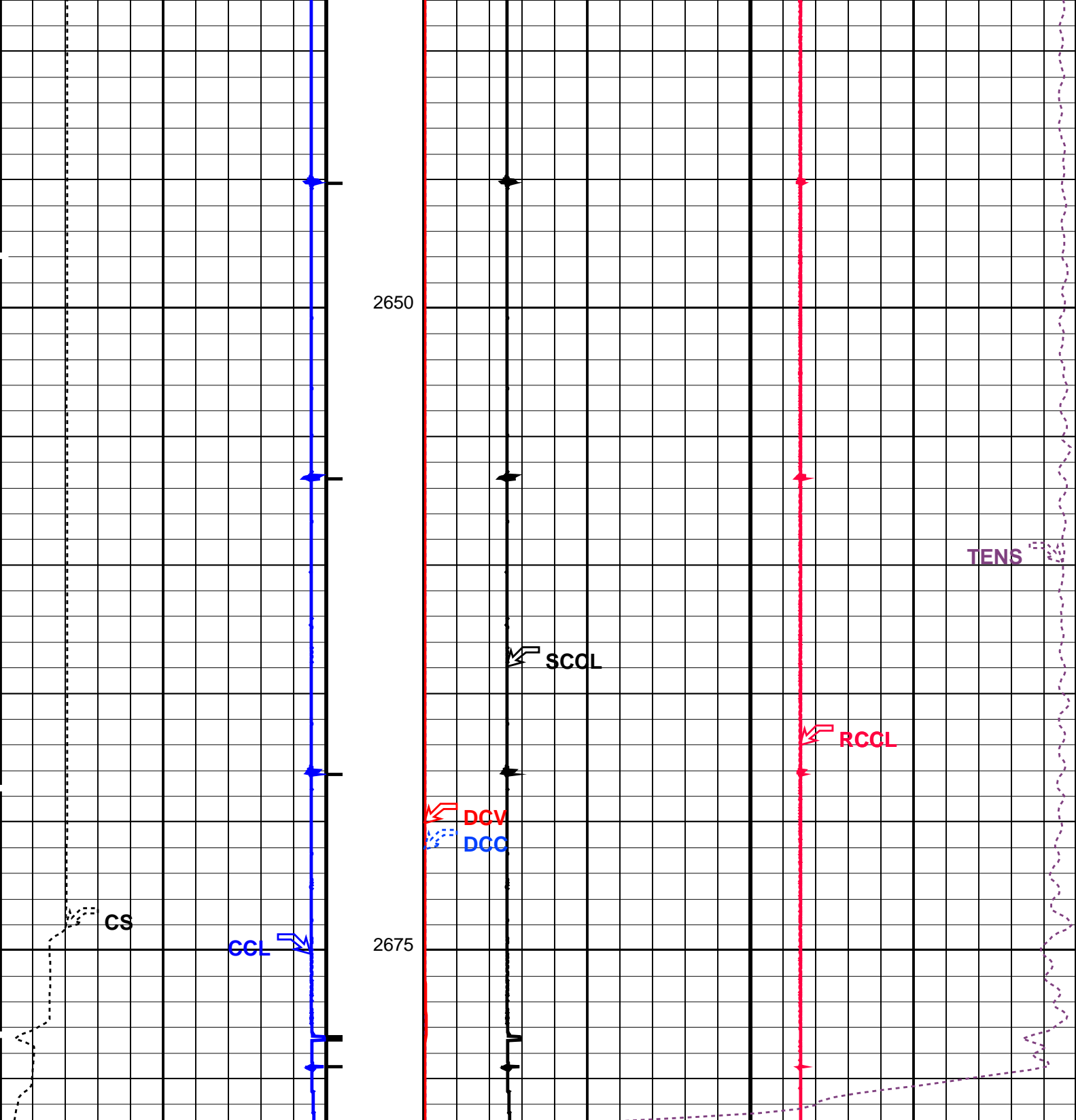
MAXIS Field Log

Input DLIS Files							
DEFAULT	PERFO_052LUP	FN:50	PRODUCER	19-Oct-2007 11:33	2684.7 M	2629.1 M	
Output DLIS Files							
DEFAULT	PERFO_053PUP	FN:51	PRODUCER	19-Oct-2007 11:39	2681.6 M	2626.5 M	

OP System Version: 14C0-302							
MCM							
SHM_GUN		14C0-302	CCL-L		14C0-302		

PIP SUMMARY							
Casing Collars							
Time Mark Every 60 S							





PIP SUMMARY

└─ Casing Collars

Parameters				
DLIS Name	Description		Value	
	CCL-L: Casing Collar	Locator		
CCLD		CCL reset delay	12	IN
CCLT		CCL Detection Level	0.3	V
	System and Miscellaneous			
DO		Depth Offset for Playback	-3.0	M
PP		Playback Processing	NORMAL	

Format: PERFO

Vertical Scale: 1:200

Graphics File Created: 19-Oct-2007 11:39

OP System Version: 14C0-302				
MCM				
SHM_GUN	14C0-302	CCL-L	14C0-302	

Input DLIS Files						
DEFAULT	PERFO_052LUP	FN:50	PRODUCER	19-Oct-2007 11:33	2684.7 M	2629.1 M
Output DLIS Files						
DEFAULT	PERFO_053PUP	FN:51	PRODUCER	19-Oct-2007 11:39		

Schlumberger

5" MPBT Plug

Set @ 2688m MDKB

MAXIS Field Log

Output DLIS Files				
DEFAULT	CCL_044LUP	FN:43	PRODUCER	19-Oct-2007 09:09

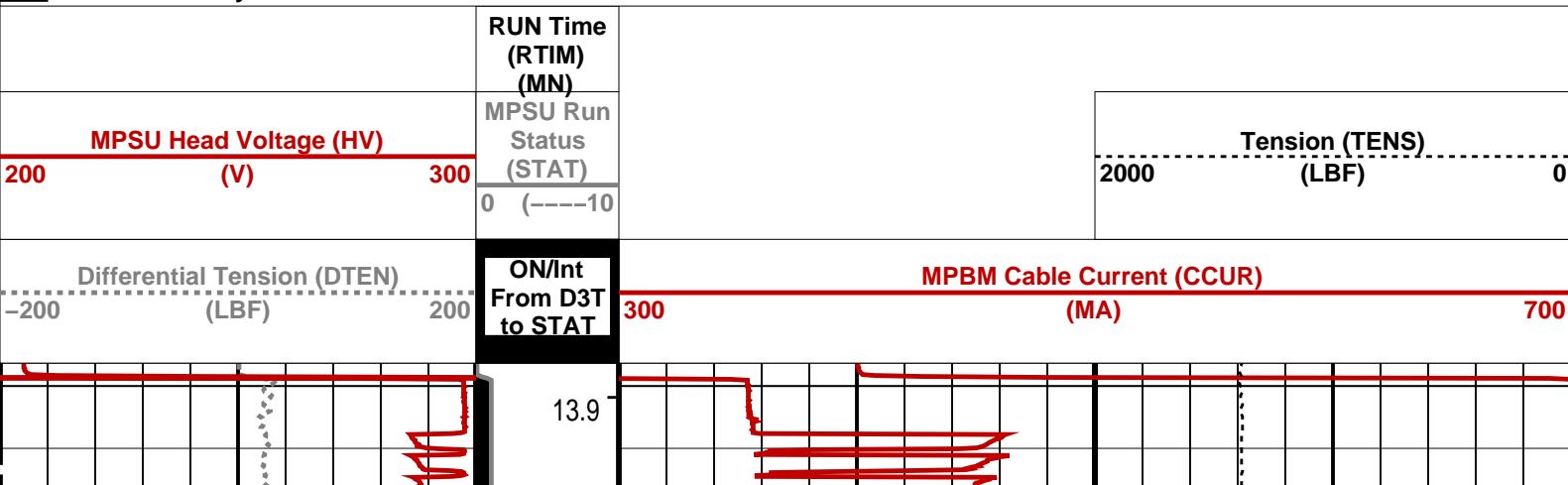
OP System Version: 14C0-302			
MCM			
MPEX-FA	14C0-302	MPSU-BA	14C0-302
CCL-L	14C0-302		

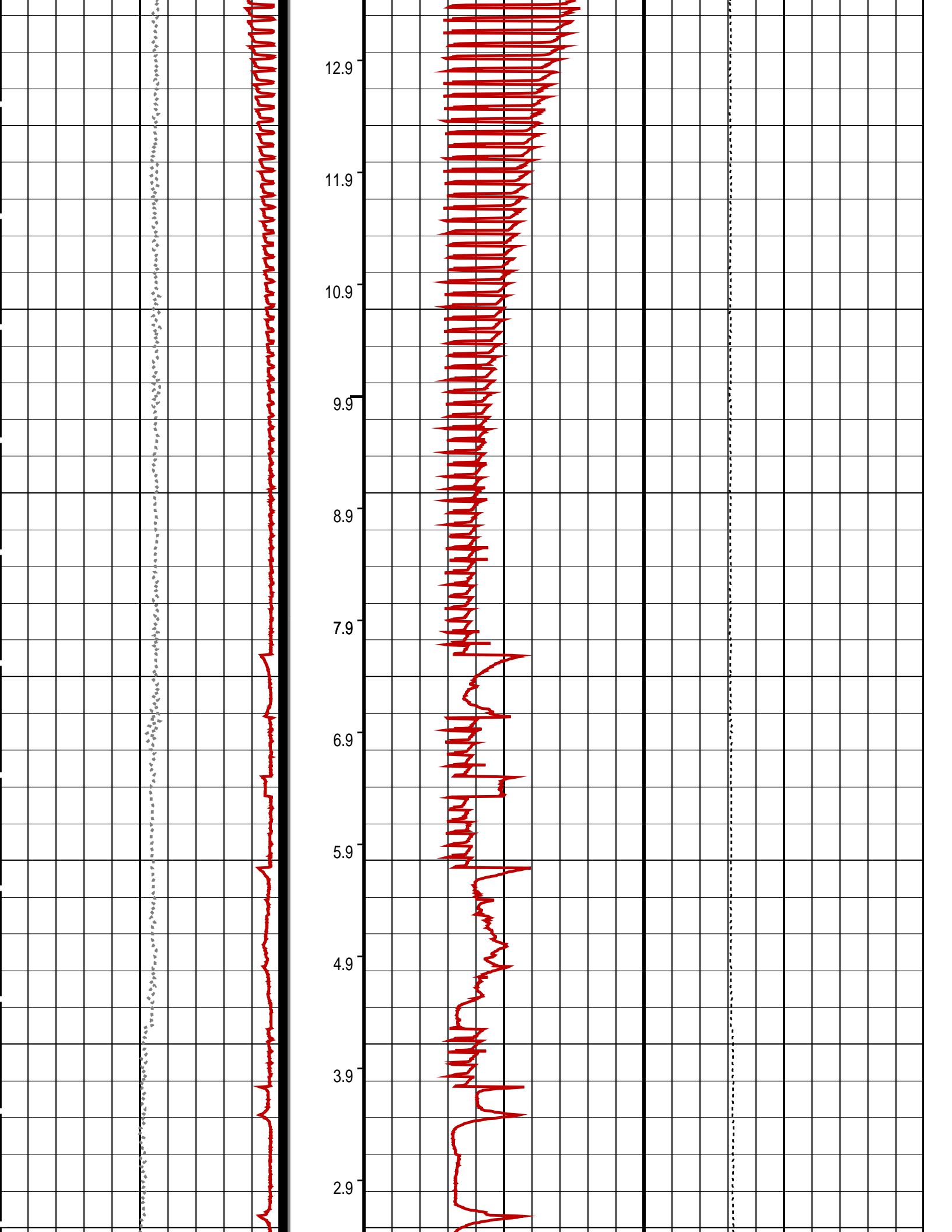
PIP SUMMARY

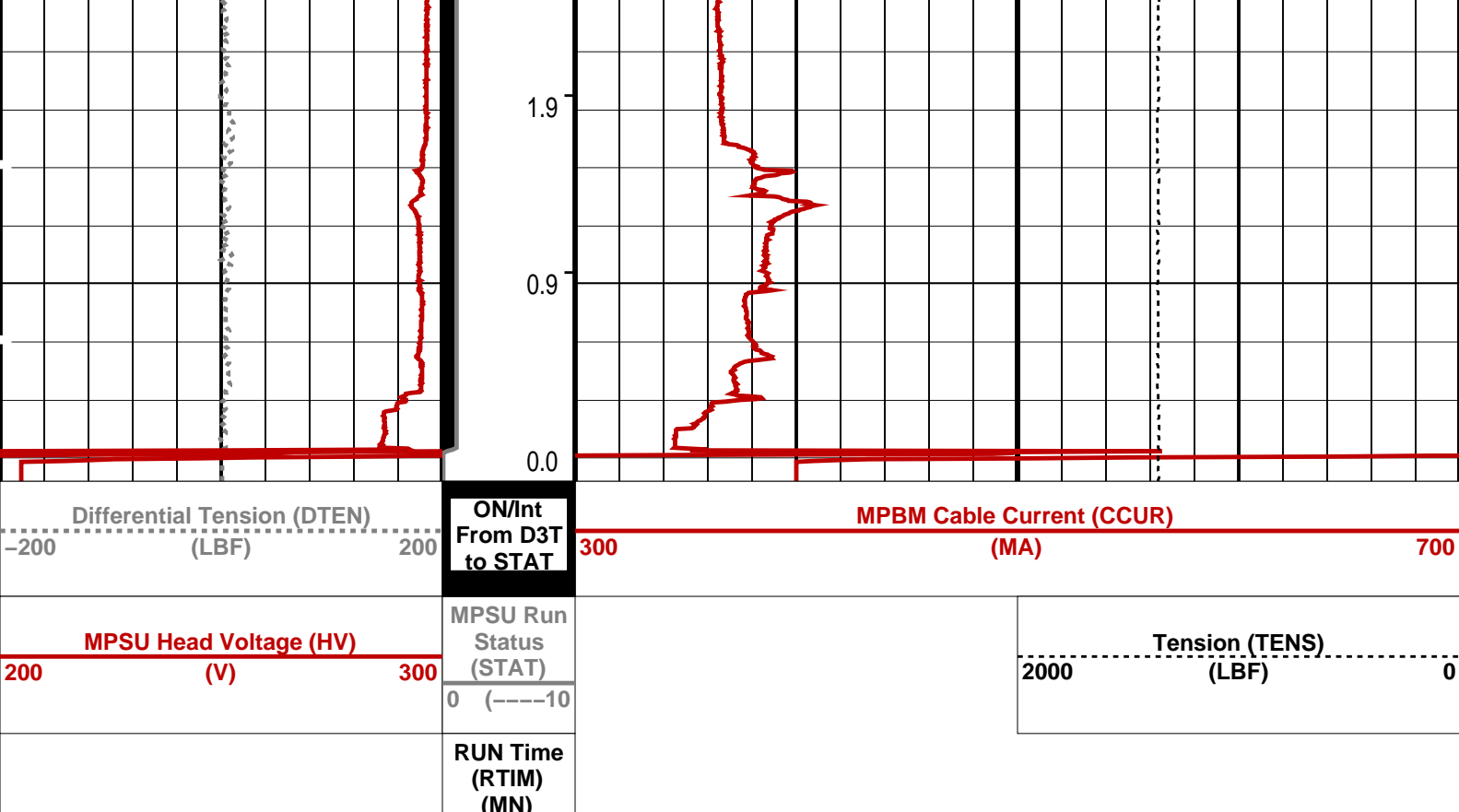
↵ MPSU Run Time Every 1 MN

↵ MPSU Run Time Every 10 MN

Time Mark Every 60 S







Time Mark Every 60 S

PIP SUMMARY

→ MPSU Run Time Every 1 MN


→ MPSU Run Time Every 10 MN

Parameters		
DLIS Name	Description	Value
MPSU-BA: MECHANICAL PLUGBACK SETTING UNIT		
IPUMP	Intensifier Pump	TRUE

Format: MPBT Vertical Scale: 1:600 Graphics File Created: 19-Oct-2007 09:09

OP System Version: 14C0-302			
MCM			
MPEX-FA	14C0-302	MPSU-BA	14C0-302
CCL-L	14C0-302		

Output DLIS Files			
DEFAULT	CCL_044LUP	FN:43	PRODUCER 19-Oct-2007 09:09



5" MPBT Plug
Log Down to Depth

MAXIS Field Log

Input DLIS Files				
DEFAULT	Flip_CCL_046LUP	PRODUCER	19-Oct-2007 09:39	2681.3 M 2605.4 M

Output DLIS Files

DEFAULT CCL_047PUP FN:45 PRODUCER 19-Oct-2007 09:39 2681.3 M 2605.9 M

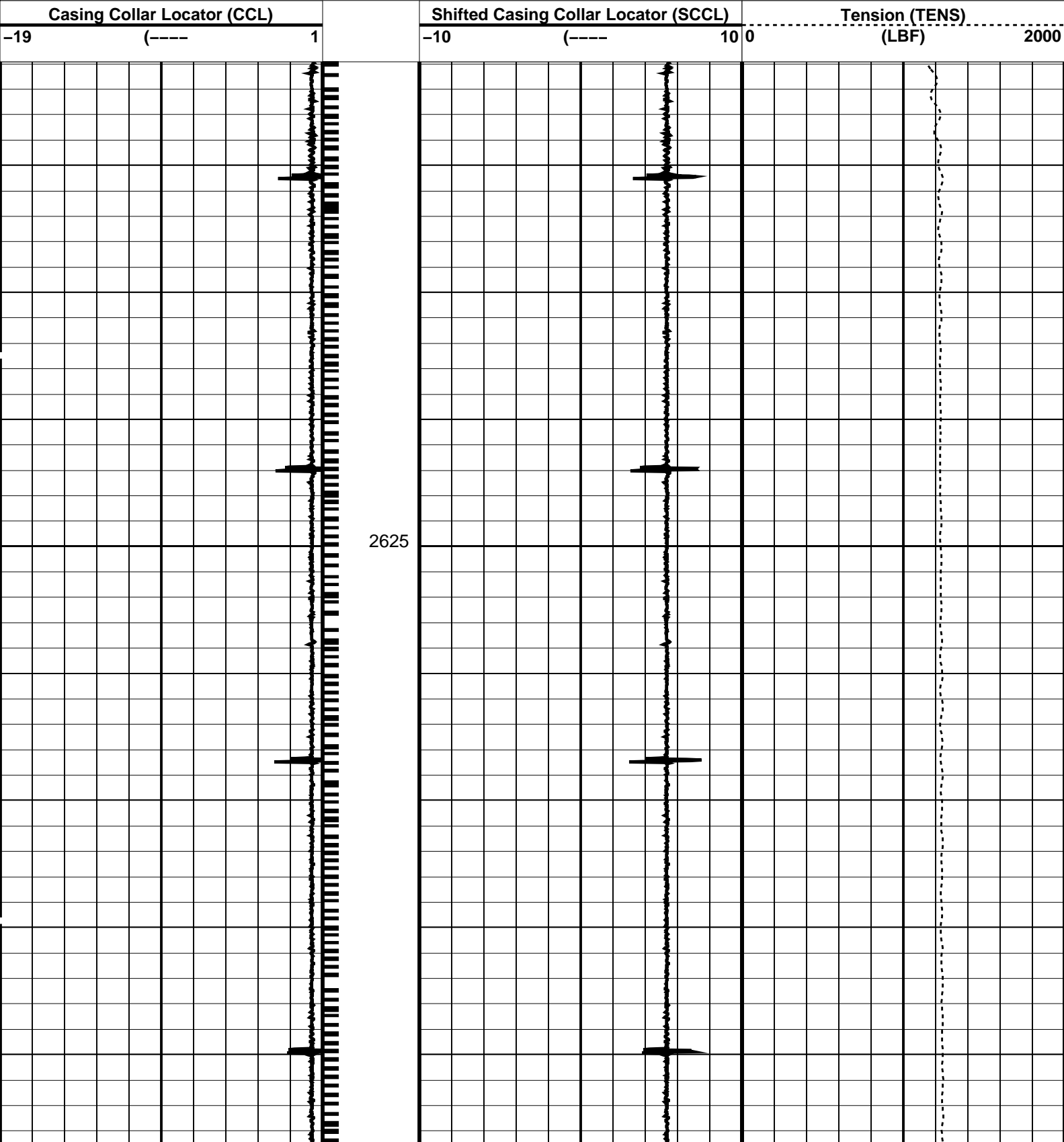
OP System Version: 14C0-302
MCM

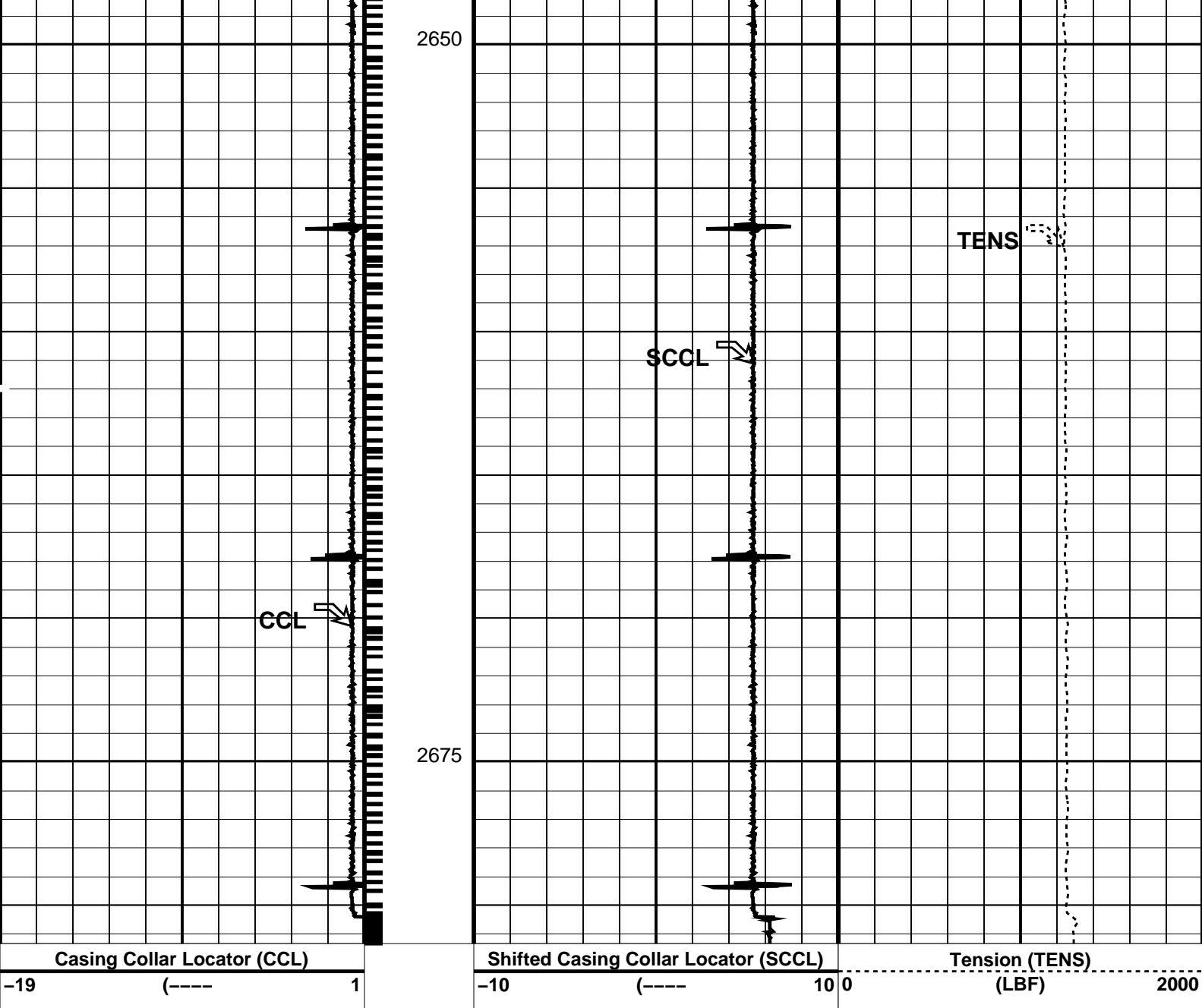
MPEX-FA 14C0-302 MPSU-BA 14C0-302
CCL-L 14C0-302

PIP SUMMARY

└─ Casing Collars

Time Mark Every 60 S





PIP SUMMARY

Time Mark Every 60 S

Casing Collars

Parameters

DLIS Name	Description	Value
CCLD	CCL-L: Casing Collar Locator	12 IN
CCLT	CCL reset delay	0.3 V
	CCL Detection Level	
DO	System and Miscellaneous	0.0 M
PP	Depth Offset for Playback	NORMAL
	Playback Processing	

Format: PERFO Vertical Scale: 1:200 Graphics File Created: 19-Oct-2007 09:39

OP System Version: 14C0-302

MCM

MPEX-FA 14C0-302 MPSU-BA 14C0-302
CCL-L 14C0-302

Input DLIS Files

DEFAULT Flip_CCL_046LUP PRODUCER 19-Oct-2007 09:39 2681.3 M 2605.4 M

Output DLIS Files

DEFAULT

CCL_047PUP

FN:45

PRODUCER

19-Oct-2007 09:39

Schlumberger

1 11/16" Dummy Plug Pass

MAXIS Field Log

Company: Esso Australia Pty Ltd.

Well: A-26

Input DLIS Files

DEFAULT PERFO_035LUP FN:34 PRODUCER 18-Oct-2007 18:23 2695.0 M 2617.5 M

Output DLIS Files

DEFAULT PERFO_036PUP FN:35 PRODUCER 18-Oct-2007 18:36 2694.4 M 2617.3 M

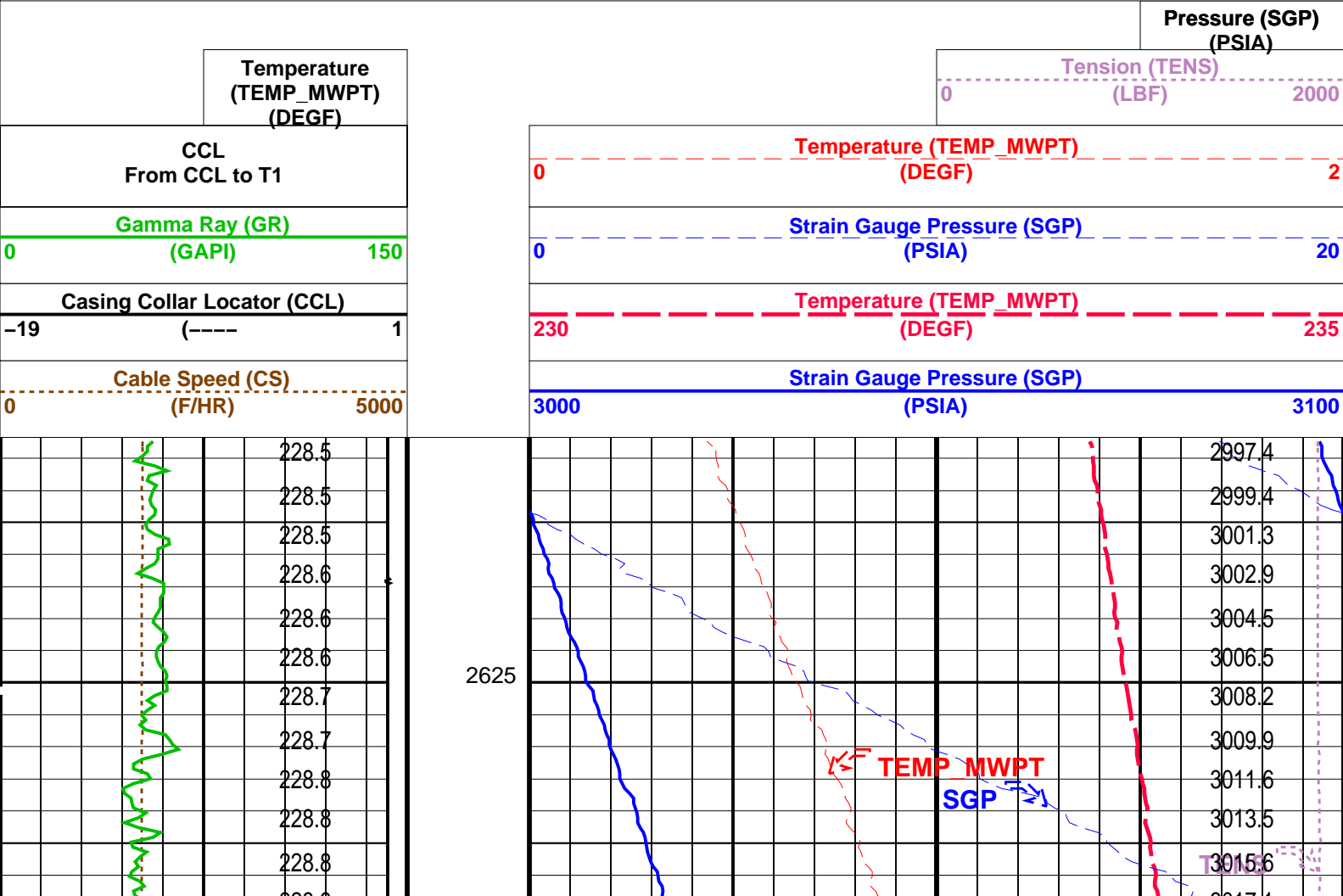
OP System Version: 14C0-302

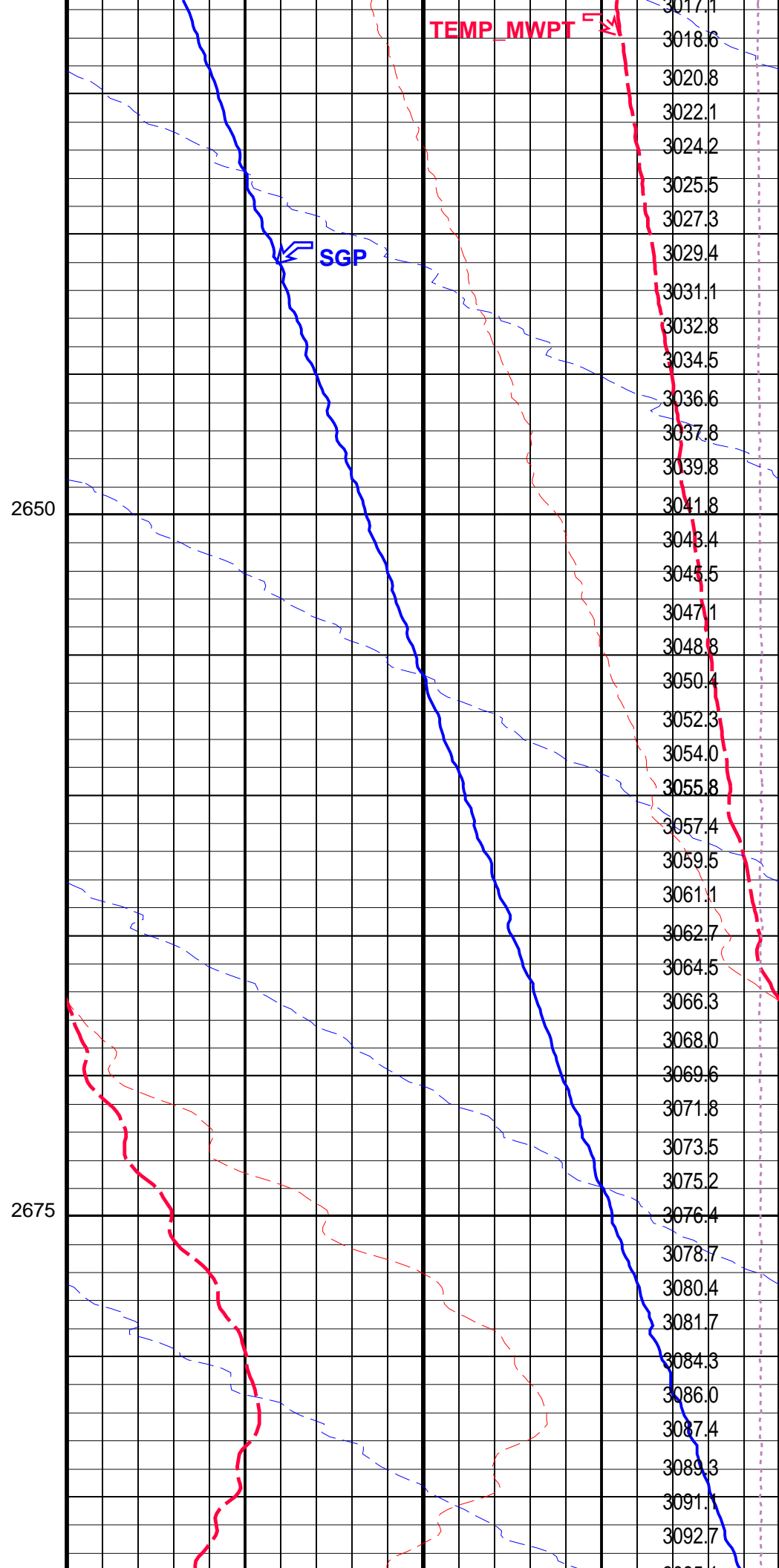
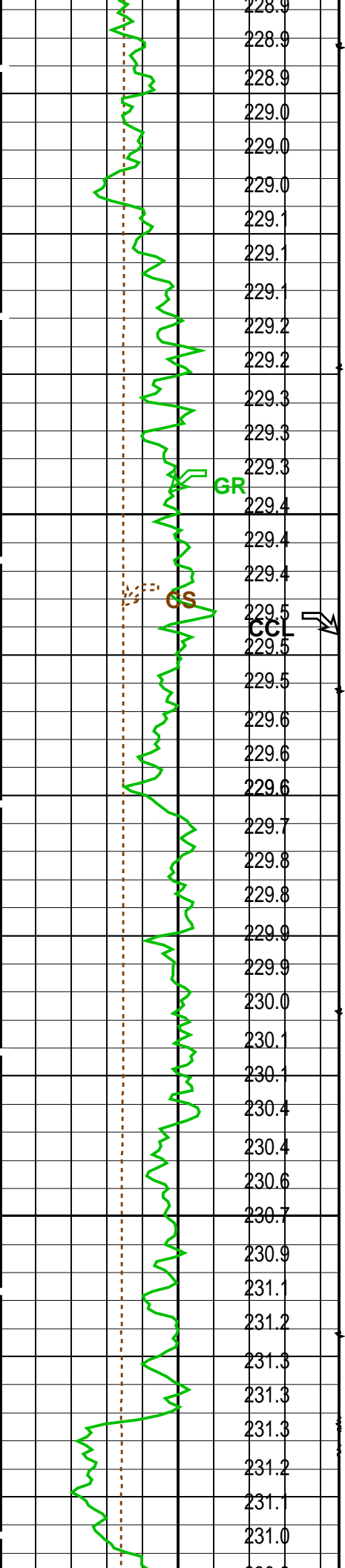
MCM

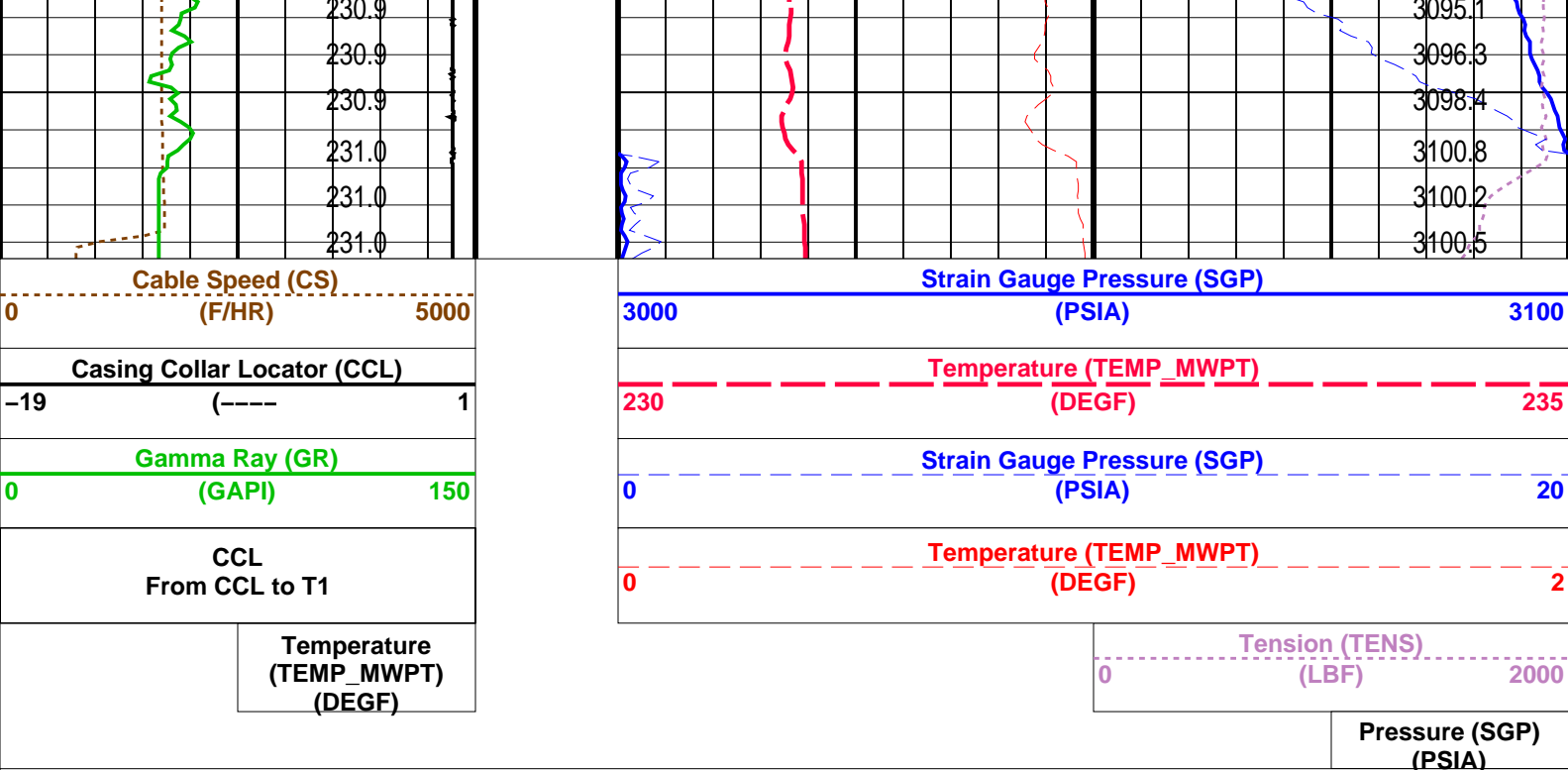
MWPT-CA 14C0-302 MWGT-AA 14C0-302

PIP SUMMARY

Time Mark Every 60 S







PIP SUMMARY

Time Mark Every 60 S

Parameters		
DLIS Name	Description	Value
MWPT-CA: MEASUREMENT WHILE PERFORATING TOOL		
DEVI_FL_CORR	Deviation Angle for Flow Line Correction	0 DEG
FLD	Flow Line Density	1 G/C3
MWPT_NULL_SOURCE	MWPT NULL Temperature Source	TEMS
MWPT_NULL_TEMP	MWPT NULL Temperature	0.0 DEGC
System and Miscellaneous		
DO	Depth Offset for Playback	-0.6 M
PP	Playback Processing	NORMAL

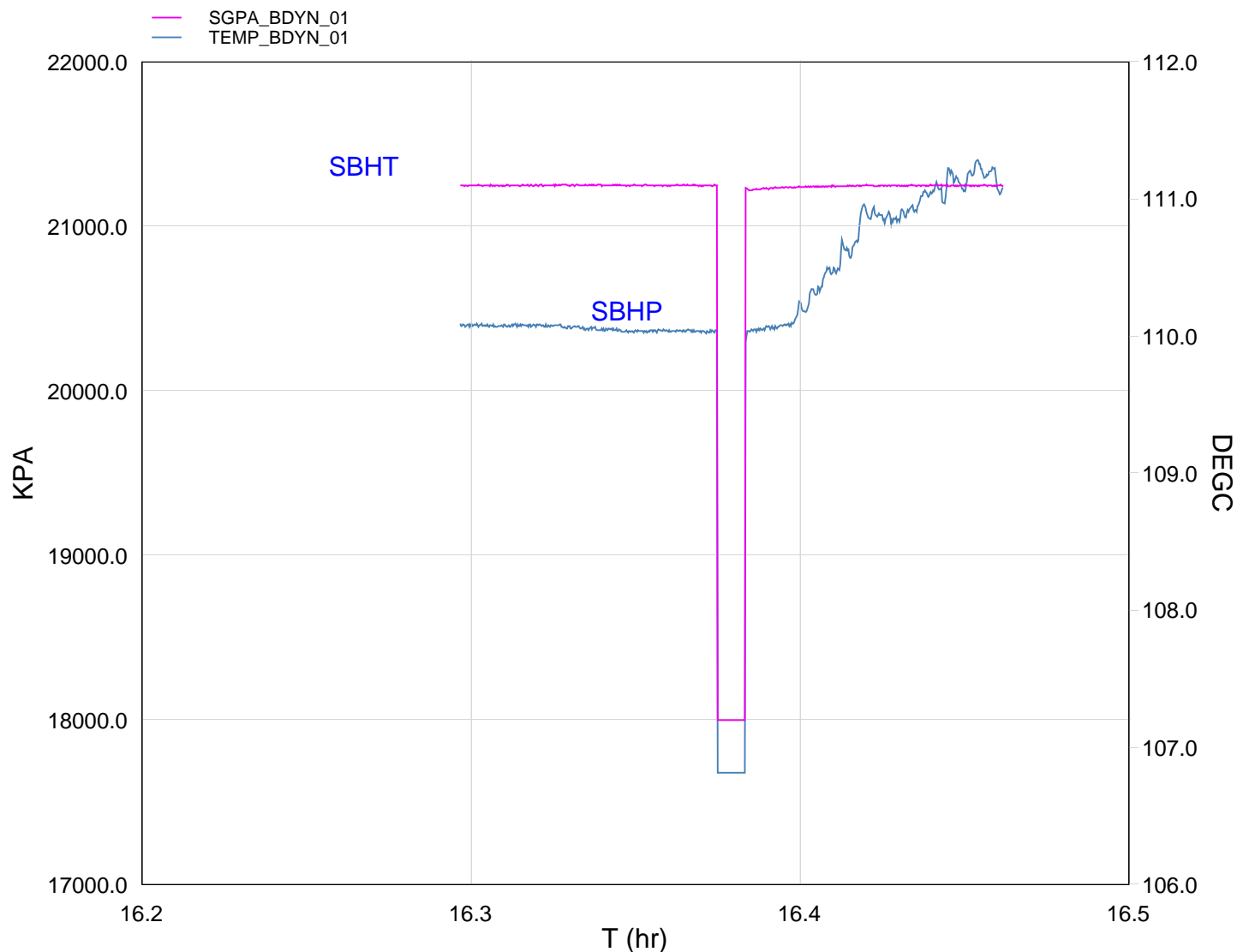
Format: MWP Vertical Scale: 1:200 Graphics File Created: 18-Oct-2007 18:36

OP System Version: 14C0-302			
MCM			
MWPT-CA	14C0-302	MWGT-AA	14C0-302

Input DLIS Files					
DEFAULT	PERFO_035LUP	FN:34	PRODUCER	18-Oct-2007 18:23	2695.0 M 2617.5 M
Output DLIS Files					
DEFAULT	PERFO_036PUP	FN:35	PRODUCER	18-Oct-2007 18:36	



Gun # 1
2682m to 2683m MDKB



TIME	DEGF	PSIA
2760.0	232.02	3081.971
2700.0	231.54	3082.016
2640.0	231.19	3081.537
2580.0	230.14	3080.323
2520.0	224.27	2610.584
2460.0	230.07	3081.749
2400.0	230.05	3081.887
2340.0	230.13	3081.655
2280.0	230.15	3082.088
2220.0	230.13	3082.282

Company: Esso Australia Pty Ltd. Well: A-26

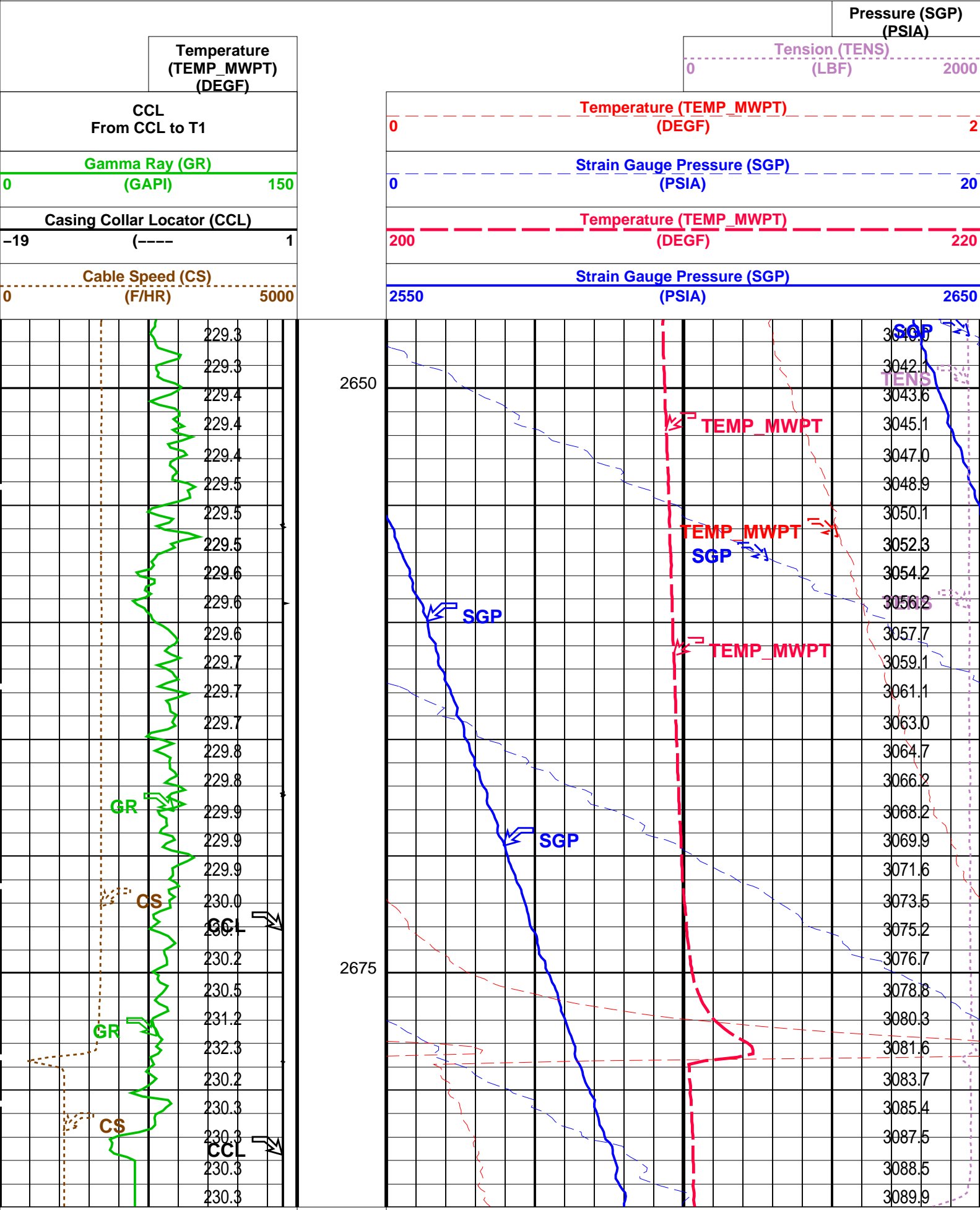
Output DLIS Files

DEFAULT PERFO_029LUP FN:28 PRODUCER 18-Oct-2007 16:13 2685.0 M 2647.0 M

OP System Version: 14C0-302
MCM

PIP SUMMARY

Time Mark Every 60 S



Cable Speed (CS) (F/HR)		5000	Strain Gauge Pressure (SGP) (PSIA)		2650
Casing Collar Locator (CCL) -19 (---- 1			Temperature (TEMP_MWPT) (DEGF) 200 220		
Gamma Ray (GR) (GAPI)			Strain Gauge Pressure (SGP) (PSIA)		
0		150	0 20		
CCL From CCL to T1			Temperature (TEMP_MWPT) (DEGF) 0 2		
		Temperature (TEMP_MWPT) (DEGF)	Tension (TENS) (LBF)		2000
					Pressure (SGP) (PSIA)


PIP SUMMARY					
Time Mark Every 60 S					

Parameters			
DLIS Name	Description	Value	
MWPT-CA: MEASUREMENT WHILE PERFORATING TOOL			
DEVI_FL_CORR	Deviation Angle for Flow Line Correction	0	DEG
FLD	Flow Line Density	1	G/C3
MWPT_NULL_SOURCE	MWPT NULL Temperature Source	TEMS	
MWPT_NULL_TEMP	MWPT NULL Temperature	0.0	DEGC

Format: MWP	Vertical Scale: 1:200	Graphics File Created: 18-Oct-2007 16:13			
-------------	-----------------------	--	--	--	--

OP System Version: 14C0-302			
MCM			
MWP_GUN	14C0-302	MWPT-CA	14C0-302
MWGT-AA	14C0-302		

Output DLIS Files					
DEFAULT	PERFO_029LUP	FN:28	PRODUCER	18-Oct-2007 16:13	



Gun Correlation Pass

MAXIS Field Log

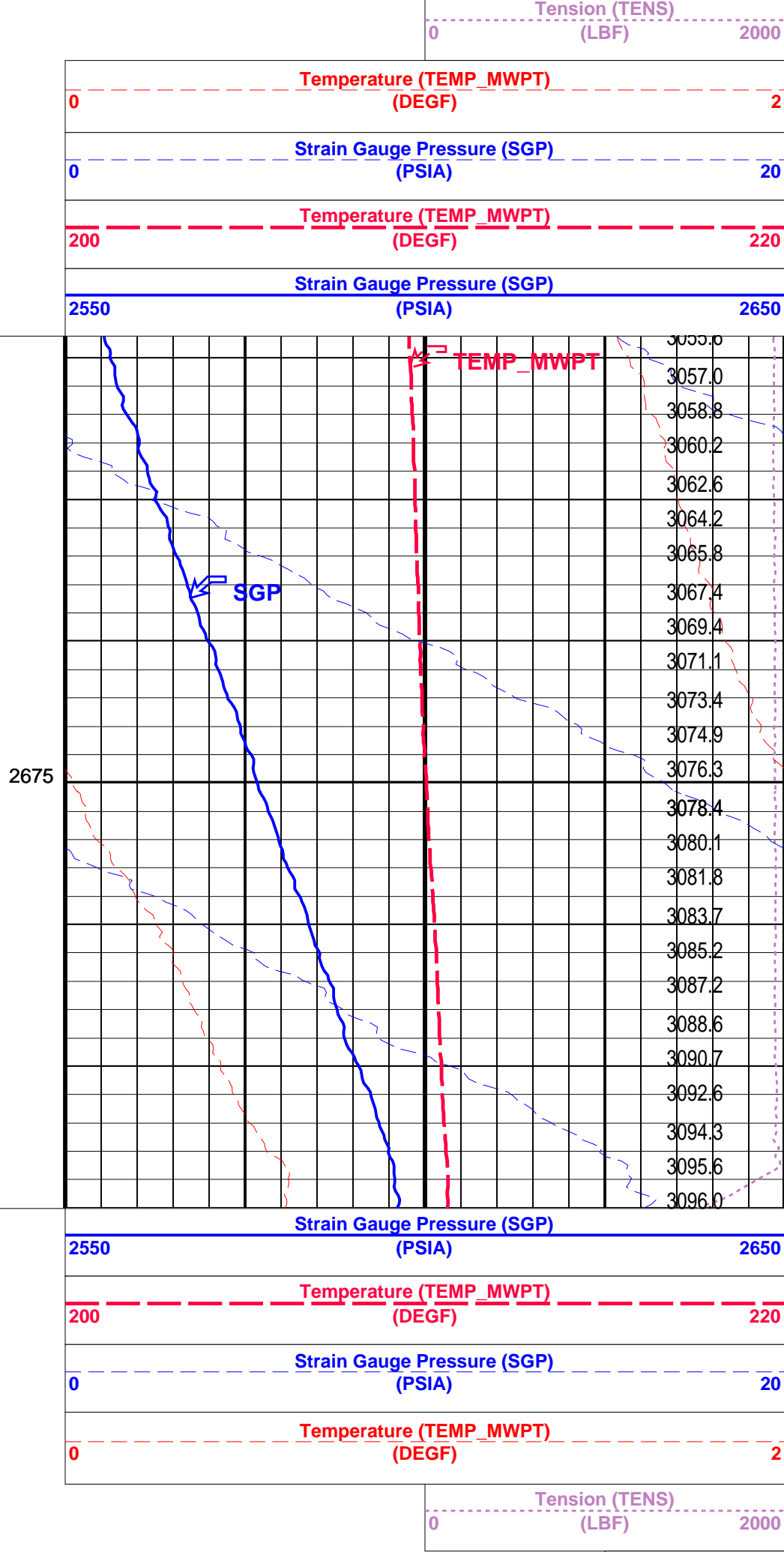
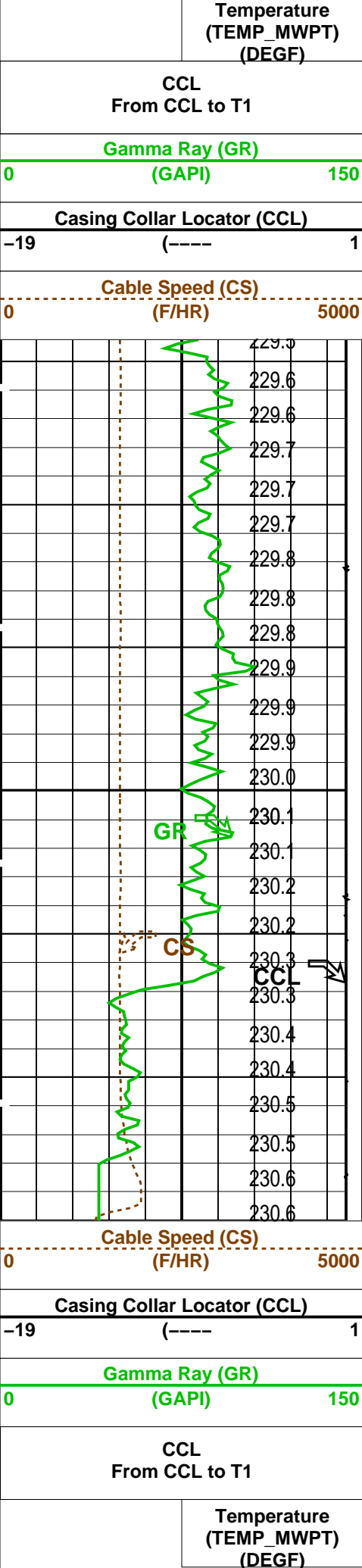
Company: Esso Australia Pty Ltd.				Well: A-26	
----------------------------------	--	--	--	------------	--

Output DLIS Files					
DEFAULT	PERFO_028LUP	FN:27	PRODUCER	18-Oct-2007 16:07	2690.0 M 2659.2 M

OP System Version: 14C0-302					
MCM					
MWP_GUN	14C0-302	MWPT-CA		14C0-302	
MWGT-AA	14C0-302				

PIP SUMMARY					
Time Mark Every 60 S					

					Pressure (SGP) (PSIA)
--	--	--	--	--	--------------------------



Time Mark Every 60 S

Parameters

DLIS Name

Description

Value

MWPT-CA: MEASUREMENT WHILE PERFORATING TOOL
DEVI_FL_CORR Deviation Angle for Flow Line Correction
FLD Flow Line Density
MWPT_NULL_SOURCE MWPT NULL Temperature Source
MWPT_NULL_TEMP MWPT NULL Temperature

0 DEG
1 G/C3
TEMS
0.0 DEGC

Format: MWP Vertical Scale: 1:200

Graphics File Created: 18-Oct-2007 16:07

OP System Version: 14C0-302

MCM

MWP_GUN 14C0-302 MWPT-CA 14C0-302
MWGT-AA 14C0-302

Output DLIS Files

DEFAULT PERFO_028LUP FN:27 PRODUCER 18-Oct-2007 16:07

Company: Esso Australia Pty Ltd.

Schlumberger

Well: A-26

Field: Flounder

Rig : Prod4 / Crane

Country: Australia

2 1/8" Phased Powerjet
Mwpt Perforation
5" Mpbt Plug