

Company: Esso Australia Pty. Ltd

Well: FTA A28b

Field: Fortescue

Rig: 175

Country: Australia

Junk Basket with 6" Gauge Ring
4 1/2" HSD Power Jet Omega
Perforation Record

175
Fortescue
Bass Strait
FTA A28b
Esso Australia Pty. Ltd

LOCATION			
Bass Strait Gippsland Basin	Elev.:	K.B.	42.49 m
		G.L.	-69 m
		D.F.	42.49 m
	Permanent Datum:	Mean Sea Level	Elev.:
Log Measured From:	Drill Floor	42.3 m above Perm. Datum	
Drilling Measured From:	Drill Floor		
State: Victoria	Max. Well Deviation 64 deg	Longitude 148° 16' 36.62" E	Latitude 38° 24' 31.39" S

Logging Date	28-Apr-2007									
Run Number	1									
Depth Driller	4028 m									
Schlumberger Depth	3825 m Not tagged									
Bottom Log Interval	3803.5 m									
Top Log Interval	3793 m									
Casing Fluid Type	Brine									
Salinity										
Density	8.55 g/cm3									
Fluid Level	0 m									
BIT/CASING/TUBING STRING										
Bit Size	8.500 in									
From	0 m									
To	4028 m									
Casing/Tubing Size	7.000 in									
Weight	26 lbm/ft									
Grade	L-80									
From	0 m									
To	4028 m									
Maximum Recorded Temperatures										
Logger On Bottom	28-Apr-2007		Time		10:25					
Unit Number	3829		Location		AUSL					
Recorded By	Owen Darby									
Witnessed By	Gary Smith & Mark Turner									

PVT DATA				Run 1	Run 2	Run 3
Oil Density						
Water Salinity						
Gas Gravity						
Bo						
Bw						
1/Bg						
Bubble Point Pressure						
Bubble Point Temperature						
Solution GOR						
Maximum Deviation	64 deg					
CEMENTING DATA						
Primary/Squeeze	Primary					
Casing String No						
Lead Cement Type						
Volume						
Density						
Water Loss						
Additives						
Tail Cement Type						
Volume						
Density						
Water Loss						
Additives						
Expected Cement Top						
Logging Date						
Run Number						
Depth Driller						
Schlumberger Depth						
Bottom Log Interval						
Top Log Interval						
Casing Fluid Type						
Salinity						
Density						
Fluid Level						
BIT/CASING/TUBING STRING						
Bit Size						
From						
To						
Casing/Tubing Size						
Weight						
Grade						
From						
To						
Maximum Recorded Temperatures						
Logger On Bottom						
Unit Number	Location					
Recorded By						
Witnessed By						

Date Created: 8-MAY-2007 10:46:01

Logging Cable

Type:	7-46ZV-XS
Serial Number:	76371
Length:	5928.06 M
Conveyance Method:	Wireline
Rig Type:	Offshore Fixed

Log Sequence:	First Log In the Well
Rig Up Length At Surface:	69.00 M
Rig Up Length At Bottom:	69.00 M
Rig Up Length Correction:	0.00 M
Stretch Correction:	0.00 M
Tool Zero Check At Surface:	0.00 M

1. Correlated to Schlumberger LWD log
2. Used IDW as primary depth control
3. Used Z-Chart as secondary depth control
4. Followed first RIH procedures
- 5.
- 6.

THE USE OF AND RELIANCE UPON THIS RECORDED-DATA BY THE HEREIN NAMED COMPANY (AND ANY OF ITS AFFILIATES, PARTNERS, REPRESENTATIVES, AGENTS, CONSULTANTS AND EMPLOYEES) IS SUBJECT TO THE TERMS AND CONDITIONS AGREED UPON BETWEEN SCHLUMBERGER AND THE COMPANY, INCLUDING: (a) RESTRICTIONS ON USE OF THE RECORDED-DATA; (b) DISCLAIMERS AND WAIVERS OF WARRANTIES AND REPRESENTATIONS REGARDING COMPANY'S USE OF AND RELIANCE UPON THE RECORDED-DATA; AND (c) CUSTOMER'S FULL AND SOLE RESPONSIBILITY FOR ANY INFERENCE DRAWN OR DECISION MADE IN CONNECTION WITH THE USE OF THIS RECORDED-DATA.

OTHER SERVICES2
OS1:
OS2:
OS3:
OS4:
OS5:

REMARKS: RUN NUMBER 2

Objective:

Rig up wireline and RIH to below the lowermost packer setting depth of

Make up toolstring incorporating GR/CCL and 10.5m of 4 1/2" HSD PowerJet Omega













charges. RII correlates to Schlumberger I WD log, pull up to CCI, open depth and

charges. RIH, correlate to Schlumberger LWD log, pull up to CCL stop depth and perforate, POOH, Lay down toolstring.
Make up toolstring incorporating CCL, Junk basket and 6" gauge ring.
RIH through perforations to lowermost packer setting depth again to ensure access for the completion string.
Perforation Interval = 3793 – 3803.5m MDKB
CCL to top shot = 4.3m
CCL stop depth = 3788.7m MDKB
Schlumberger Crew:
Opertors: Rick Murray & Nathan Simmons (Days)
Luke Dooley & Zeb Casey (Nights)

RUN 1			RUN 2		
SERVICE ORDER #:		L0501H003	SERVICE ORDER #:		
PROGRAM VERSION:		13C0-300	PROGRAM VERSION:		
FLUID LEVEL:		0 m	FLUID LEVEL:		
LOGGED INTERVAL	START	STOP	LOGGED INTERVAL	START	STOP

EQUIPMENT DESCRIPTION					
RUN 1			RUN 2		

SURFACE EQUIPMENT			SURFACE EQUIPMENT		

DOWNHOLE EQUIPMENT			DOWNHOLE EQUIPMENT		
PEH-A PEH-A 11		5.61	PEH-A PEH-A 11		16.22
			AH-64 AH-64 8001		15.68
AH-64 AH-64 8001		5.06	PGGT-D PGGC 156 PGGH-D 156		15.27
			Gamma Ray		
PGGT-D PGGC 156 PGGH-D 156		4.65	CCL Casin Tension		TOOL ZERO
			Gamma Ray		
AH-283		2.87	AH-283		13.49
			AH-WPSA AH-WPSA 33		13.41
AH-WPSA AH-WPSA 33		2.79	AH-Dual port firing head		12.50
			AH-4 1/2" HSD Gun AH-4 1/2" HSD Gun		12.19

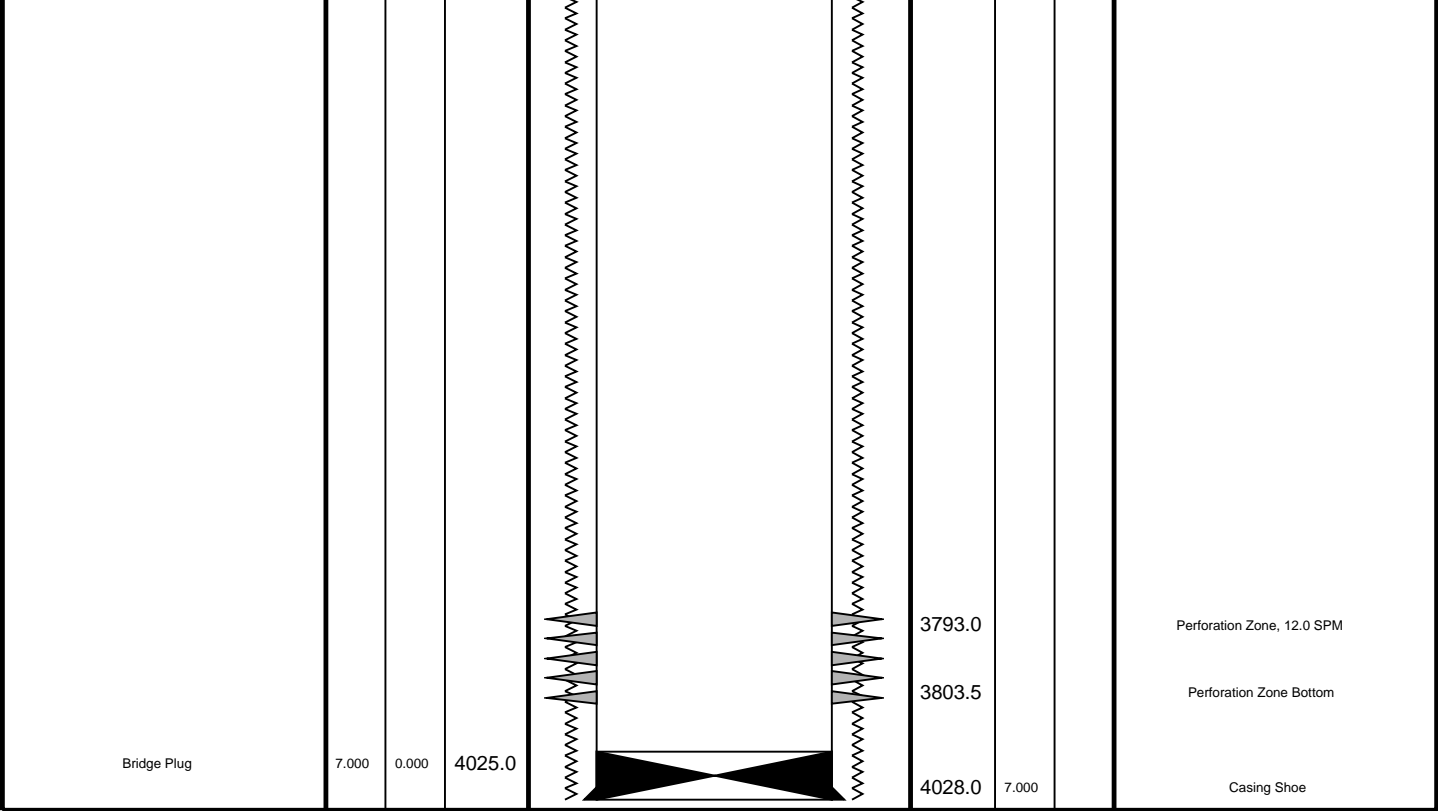
TOOL BOTTOM

TOOL BOTTOM

--

MAXIMUM STRING DIAMETER 4.50 IN
MEASUREMENTS RELATIVE TO TOOL ZERO
ALL LENGTHS IN METERS

Rig Name: 175
Reference Datum: Mean Sea Level
Elevation: 42.5 m



Junk Basket Run # 2 Correlation Pass

MAXIS Field Log

Company: Esso Australia Pty. Ltd Well: FTA A28b

Output DLIS Files					
DEFAULT	PERFO_040LUP	FN:39	PRODUCER	01-May-2007 16:48	3826.5 M 3720.2 M

OP System Version: 14C0-302			
MCM			
PGGT-D	14C0-302	SHM_GUN	14C0-302

PIP SUMMARY

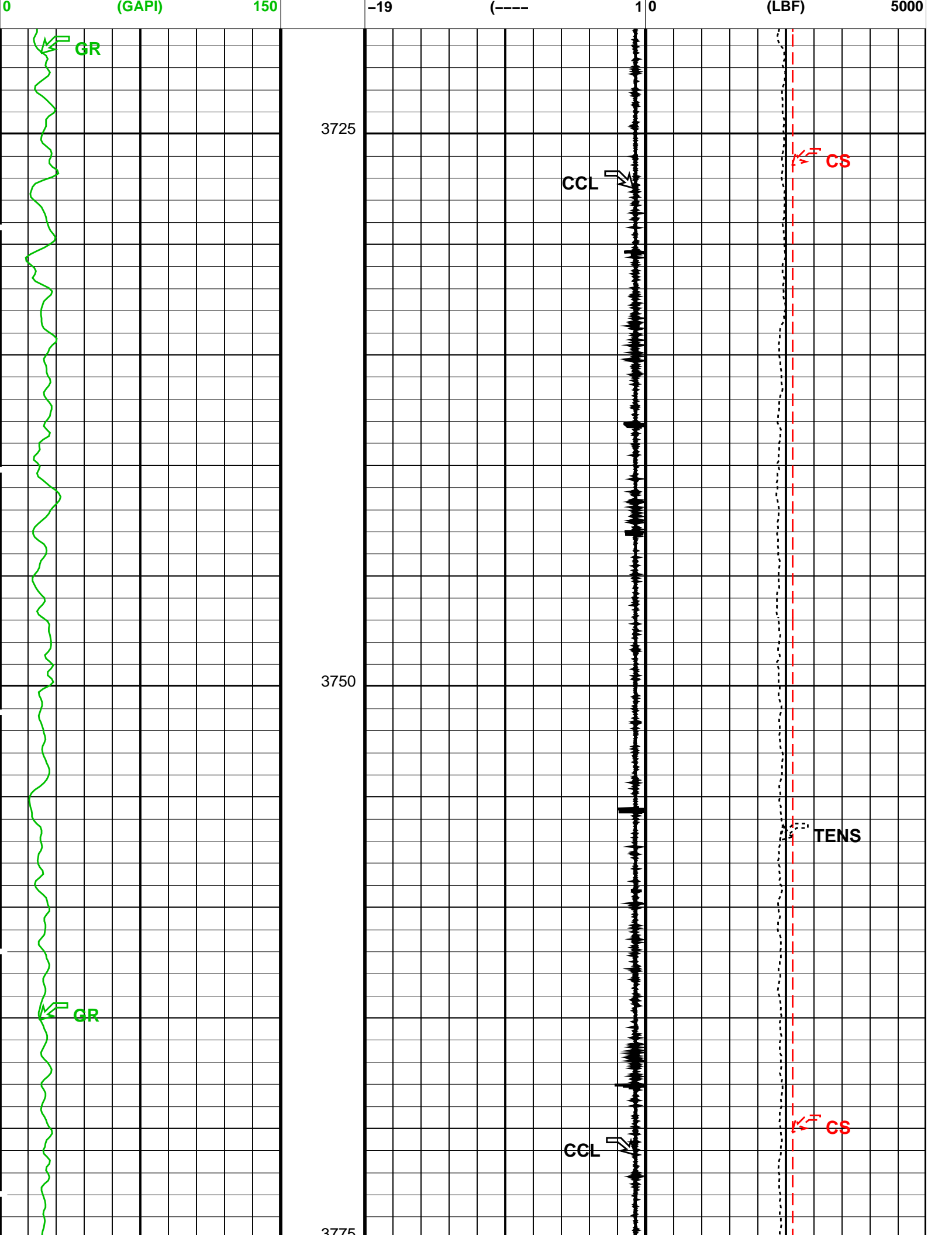
Time Mark Every 60 S

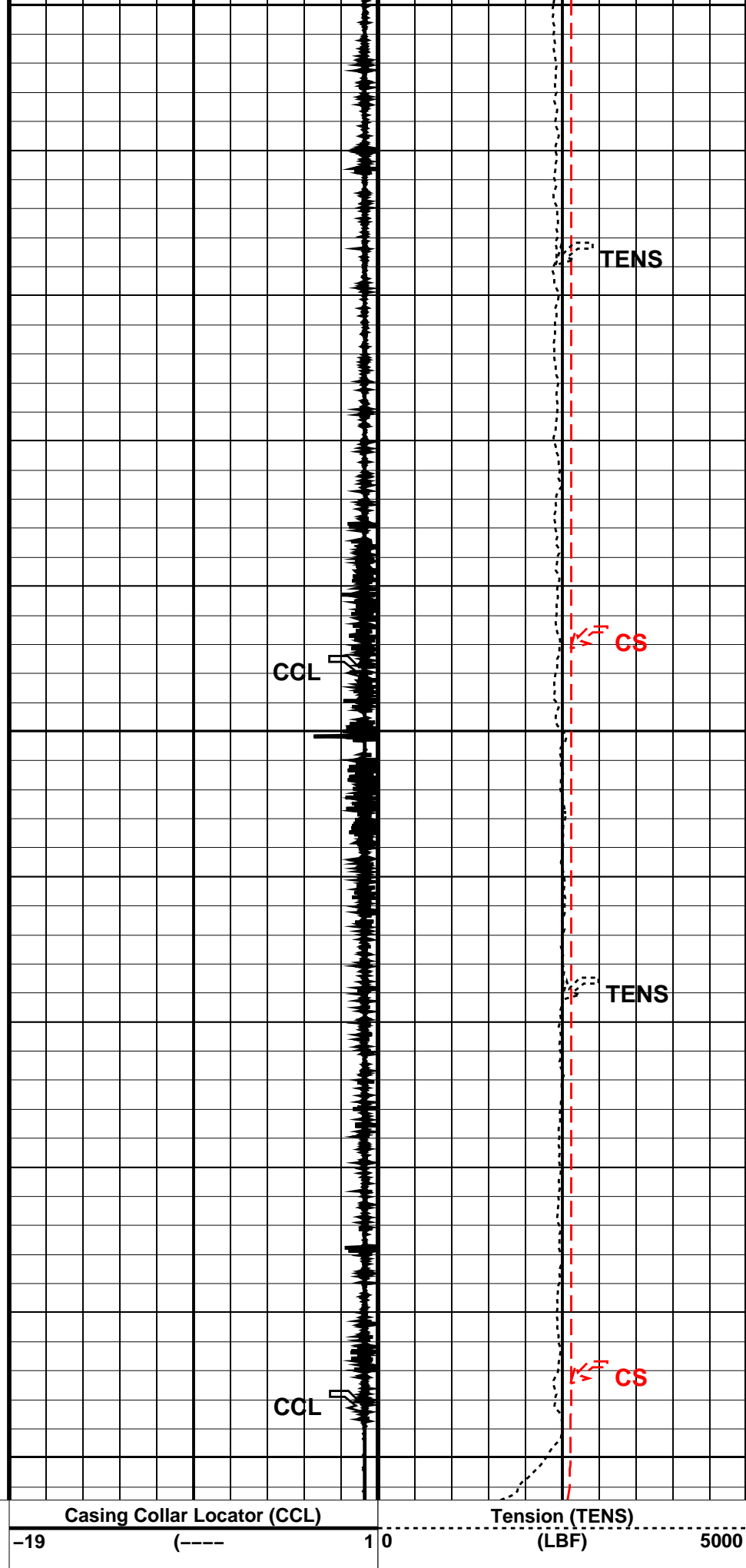
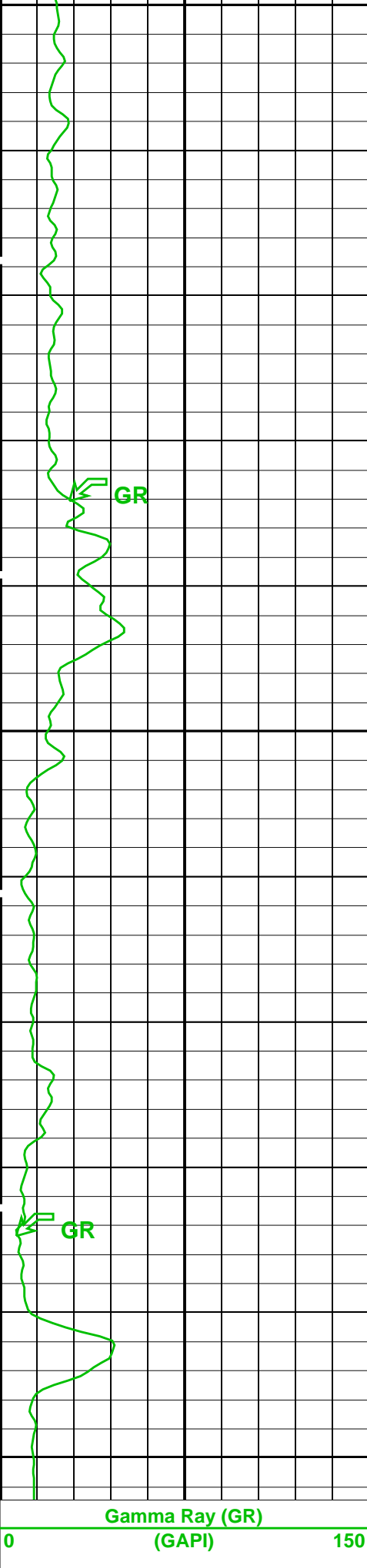
Cable Speed (CS)
0 (F/HR) 50000

Gamma Ray (GR)

Casing Collar Locator (CCL)

Tension (TENS)





PIP SUMMARY

Time Mark Every 60 S

Format: PERFO_1_1 Vertical Scale: 1:200 Graphics File Created: 01-May-2007 16:48

OP System Version: 14C0-302

MCM

PGGT-D

14C0-302

SHM_GUN

14C0-302

Output DLIS Files

DEFAULT PERFO_040LUP FN:39 PRODUCER 01-May-2007 16:48

Schlumberger

4 1/2" HSD Power Jet Omega Shooting Pass

MAXIS Field Log

PERFO2 Operational Summary Listing

Device	Status	Req Depth (M)	Obs Depth (M)	Time Used
GUN1	Used	3793.0	3793.0	Mon Apr 29 11:40:03 2007

Company: Esso Australia Pty. Ltd

Well: FTA A28b

Output DLIS Files

DEFAULT PERFO_031LUP FN:30 PRODUCER 29-Apr-2007 11:32

OP System Version: 14C0-302

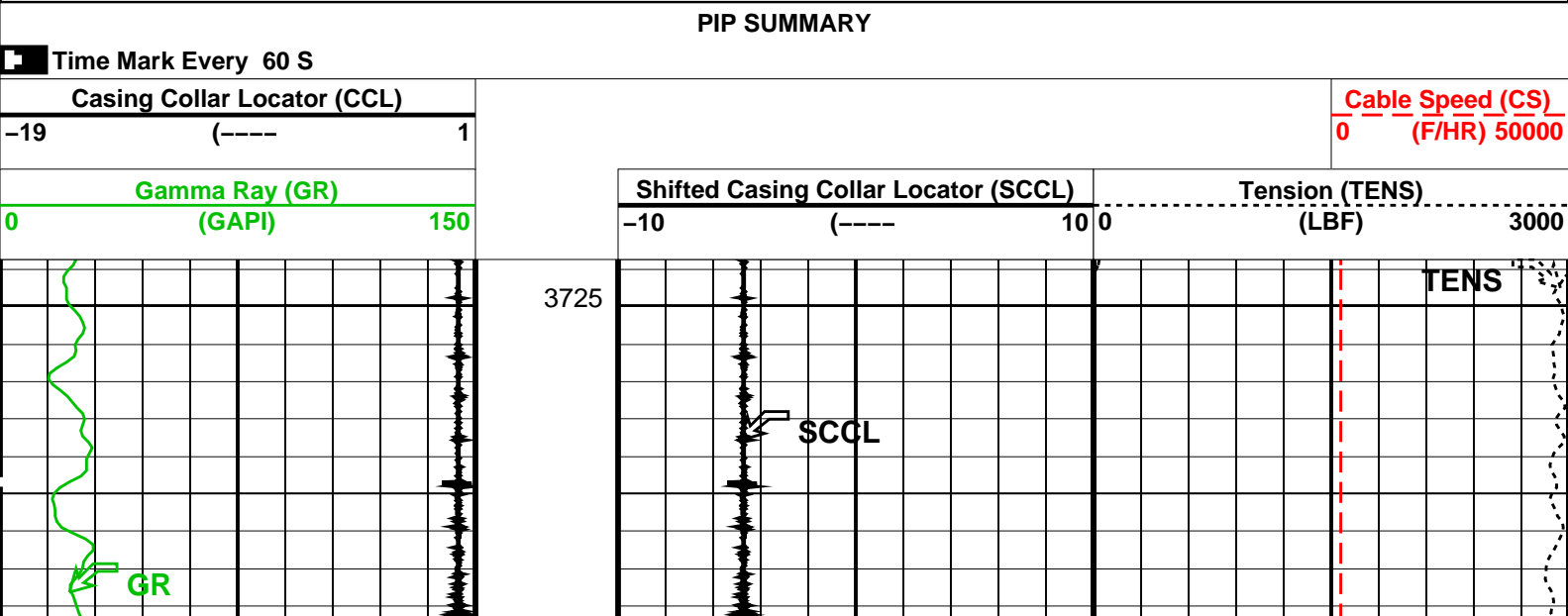
MCM

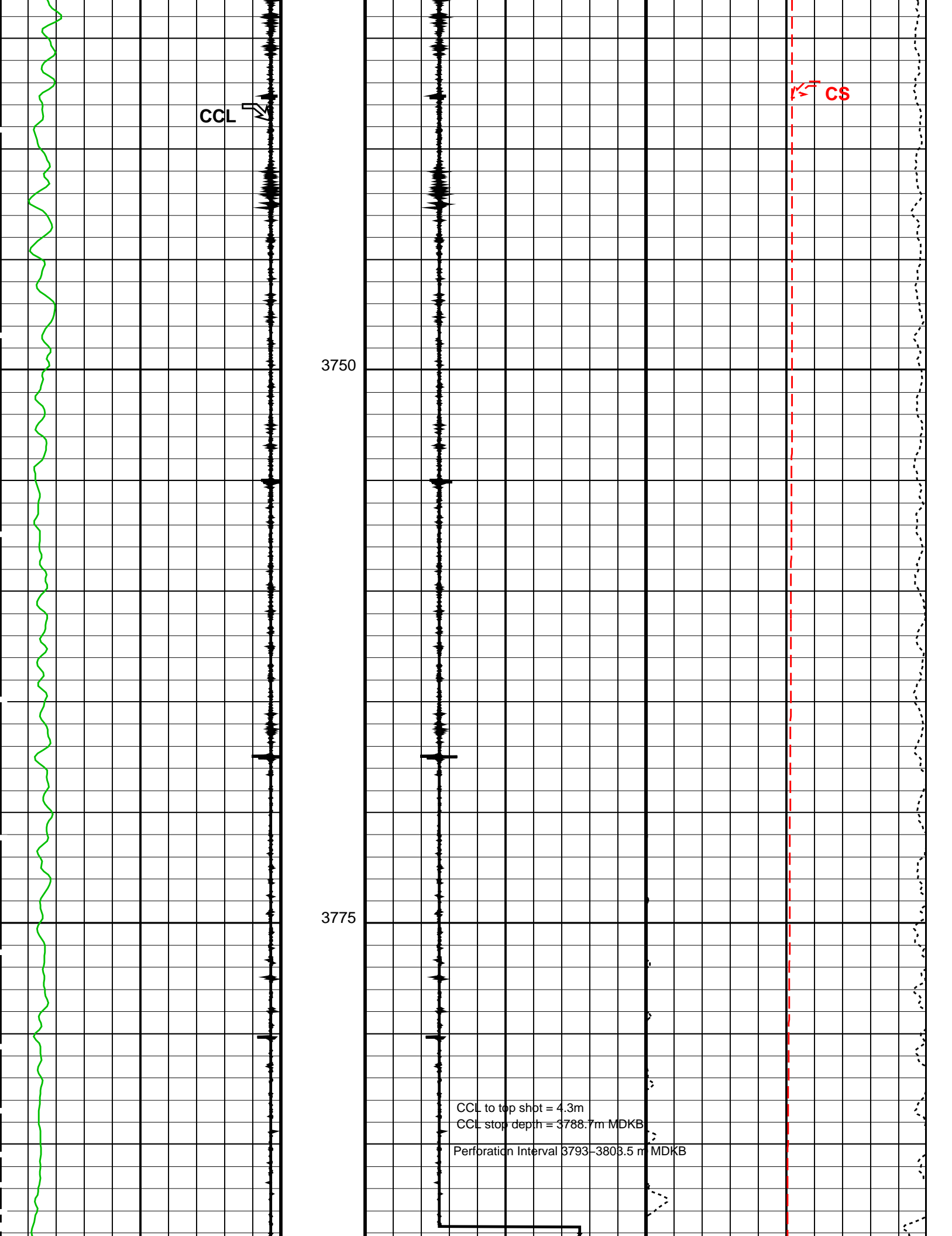
PGGT-D

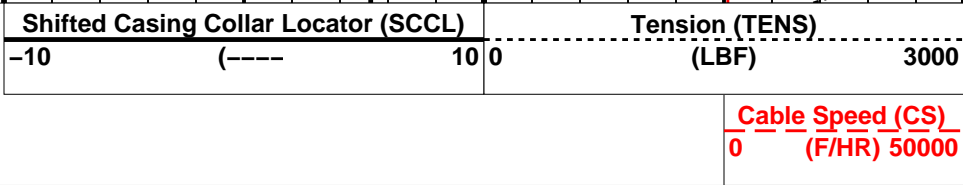
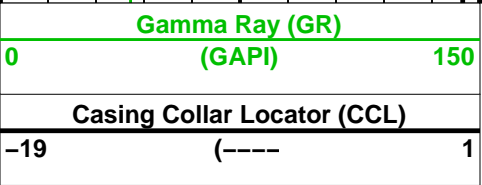
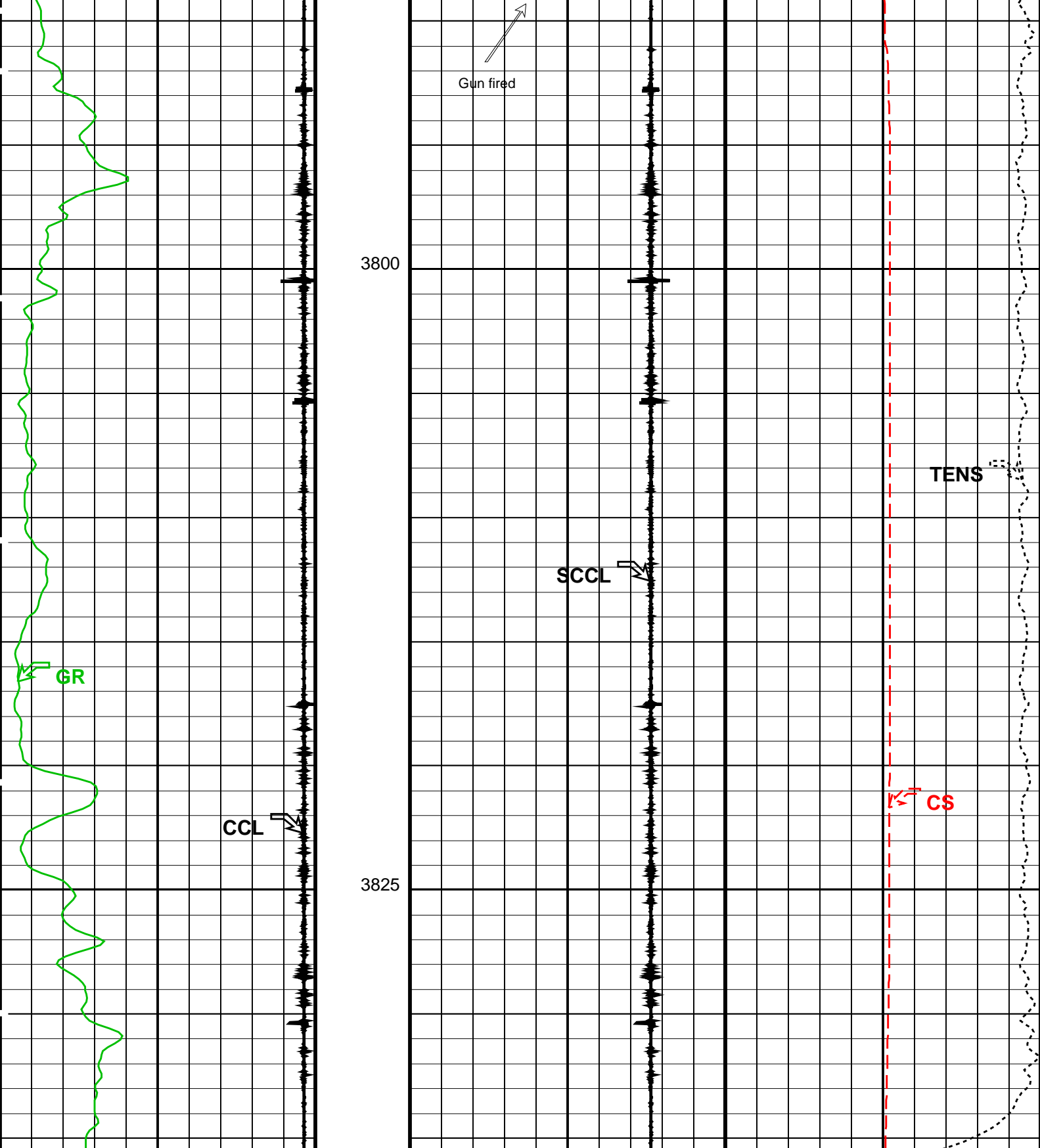
14C0-302

SHM_GUN

14C0-302





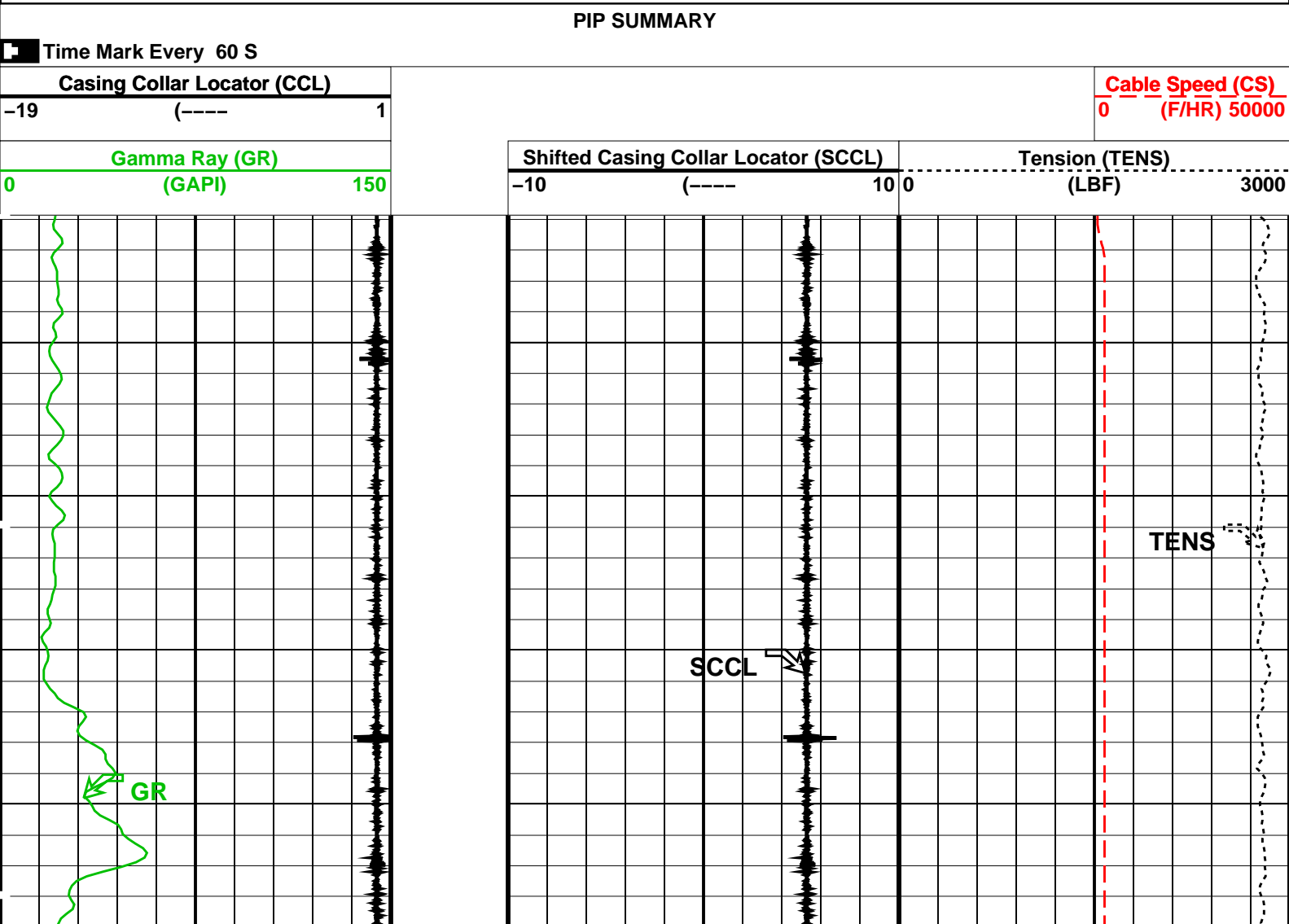


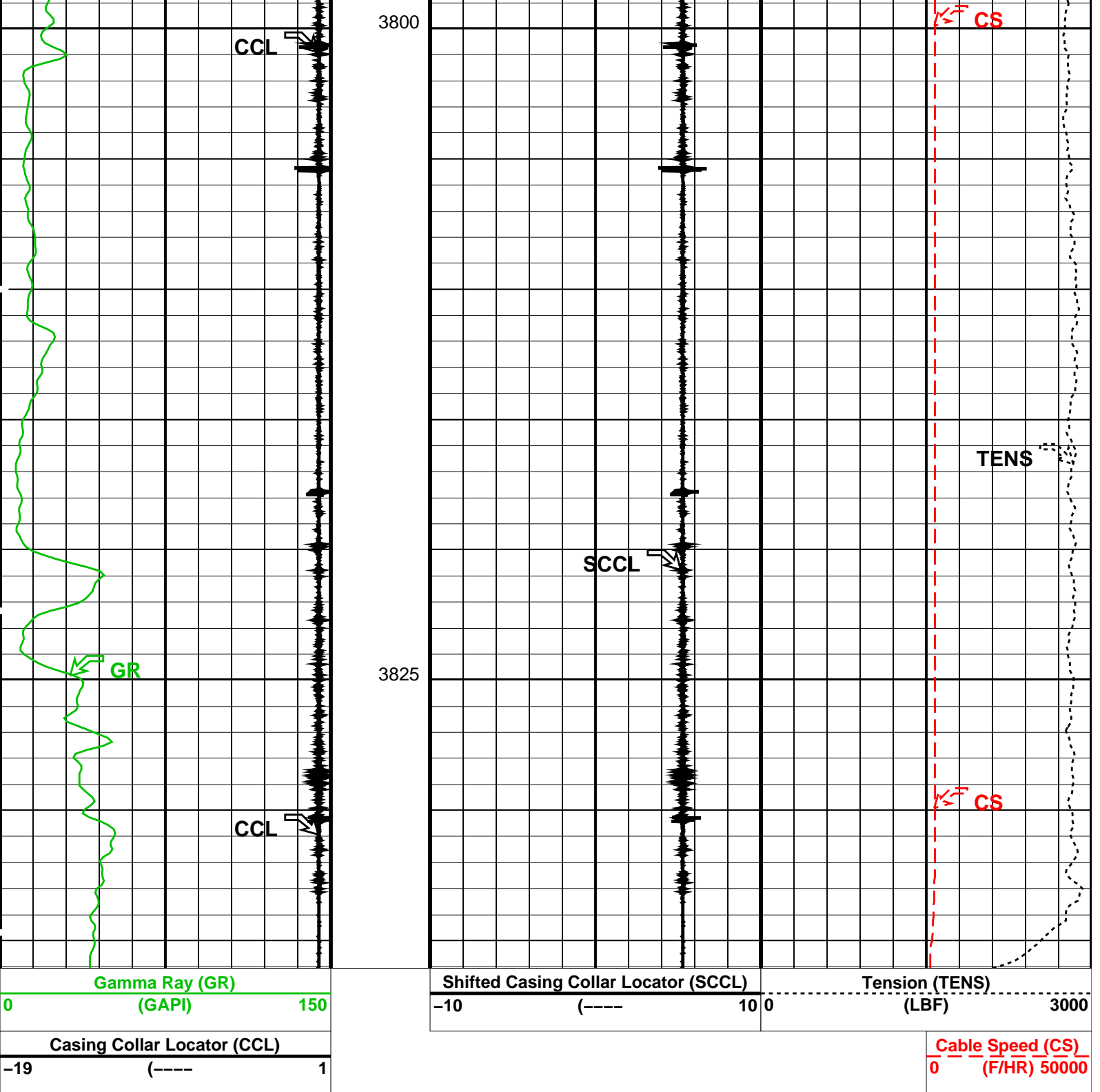
PIP SUMMARY

Schlumberger

4 1/2" HSD Power Jet Omega
Correlation Pass

MAXIS Field Log





PIP SUMMARY			
Time Mark Every 60 S			
Format: PERFO_1		Vertical Scale: 1:200	
Graphics File Created: 29-Apr-2007 11:25			
OP System Version: 14C0-302			
MCM			
PGGT-D	14C0-302	SHM_GUN	14C0-302
Output DLIS Files			
DEFAULT	PERFO_030LUP	FN:29	PRODUCER 29-Apr-2007 11:25

MAXIS Field Log

Company: Esso Australia Pty. Ltd

Well: FTA A28b

Input DLIS Files

DEFAULT	PERFO_007LUP	FN:6	PRODUCER	28-Apr-2007 22:26	3842.3 M	3737.6 M
---------	--------------	------	----------	-------------------	----------	----------

Output DLIS Files

DEFAULT	PERFO_012PUP	FN:11	PRODUCER	28-Apr-2007 22:52	3842.5 M	3738.2 M
---------	--------------	-------	----------	-------------------	----------	----------

OP System Version: 14C0-302

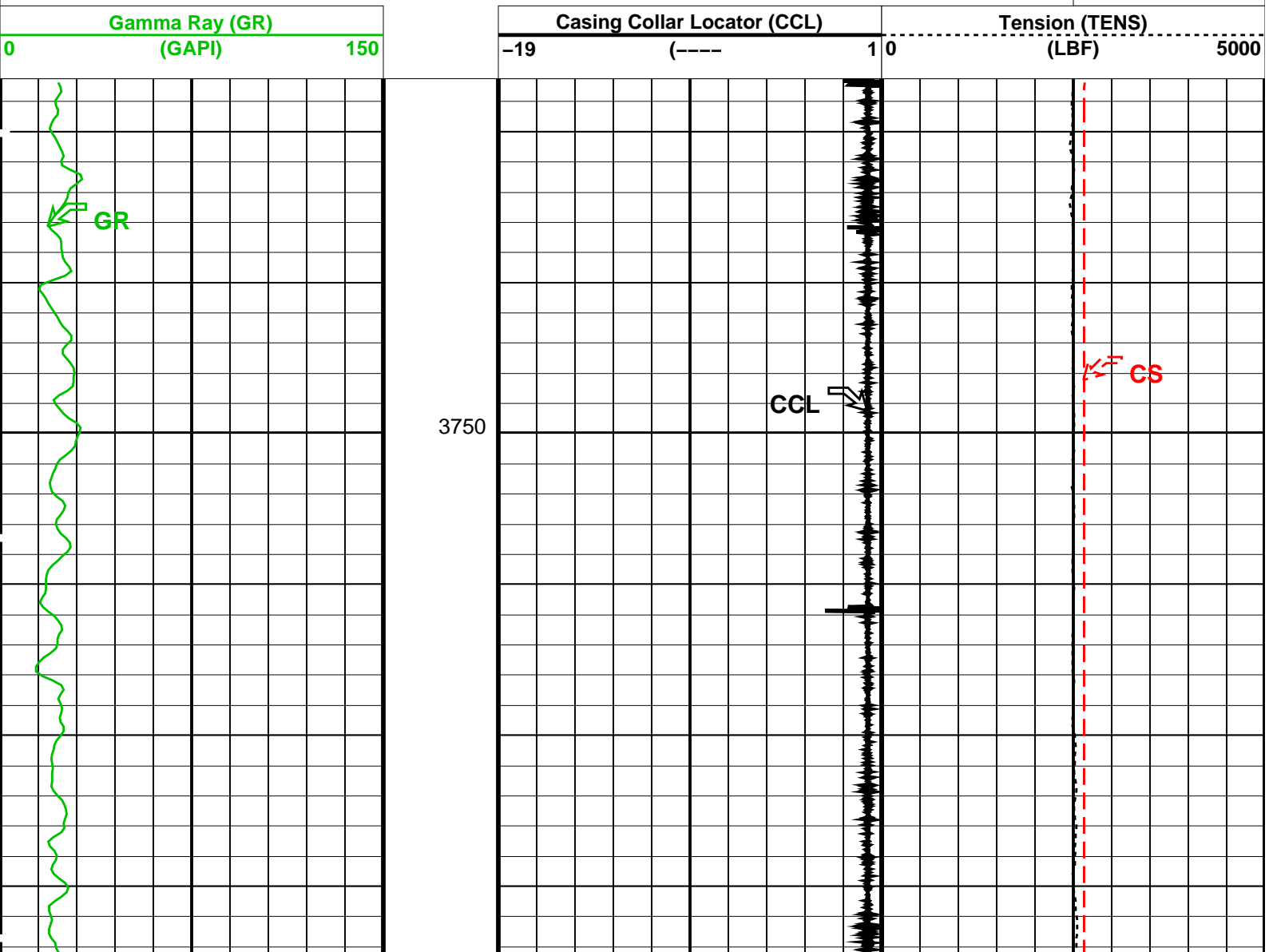
MCM

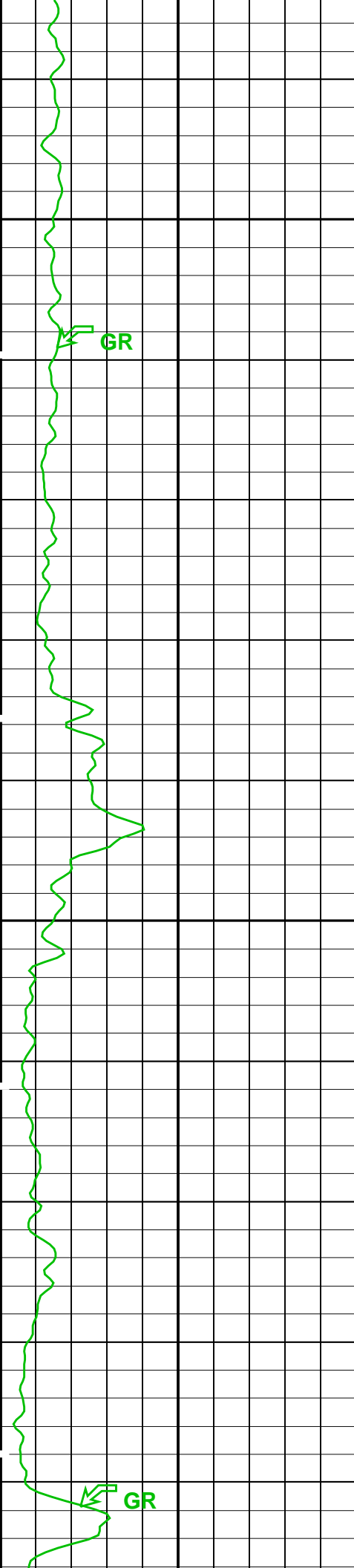
PGGT-D	14C0-302	SHM_GUN	14C0-302
--------	----------	---------	----------

PIP SUMMARY

Time Mark Every 60 S

<u>Cable Speed (CS)</u>
0 <u>(F/HR) 50000</u>





3775

3800

