

Schlumberger

Company:	Eso Australia Pty Ltd
Well:	Barracouta A-3w
Field:	Gippsland Basin
Rig:	ISS SHU
Country:	Australia

	Run 1	Run 2
PVT DATA		
Oil Density		
Water Salinity		
Gas Gravity		
Bo		
Bw		
1/Bg		
Bubble Point Pressure		
Bubble Point Temperature		
Solution GOR		
Maximum Deviation	0 deg	
CEMENTING DATA		
Primary/Squeeze	Primary	
Casing String No		
Lead Cement Type		
Volume		
Density		
Water Loss		
Additives		
Tail Cement Type		
Volume		
Density		
Water Loss		
Additives		
Expected Cement Top		

Logging Date			
Run Number			
Depth Driller			
Schlumberger Depth			
Bottom Log Interval			
Top Log Interval			
Casing Fluid Type			
Salinity			
Density			
Fluid Level			
BIT/CASING/TUBING STRING			
Bit Size			
From			
To			
Casing/Tubing Size			
Weight			
Grade			
From			
To			
Maximum Recorded Temperatures			
Logger On Bottom	Time		
Unit Number	Location		
Recorded By			
Witnessed By			

DEPTH SUMMARY LISTING

Date Created: 1-OCT-2007 8:06:02

Depth System Equipment

Depth Measuring Device		Tension Device		Logging Cable	
Type:	IDW-H	Type:	CMTD-B/A	Type:	7-46V-XS
Serial Number:	794	Serial Number:	1711	Serial Number:	71260
Calibration Date:	20-Mar-2007	Calibration Date:	27-Sep-2007	Length:	5088.94 M
Calibrator Serial Number:	1009	Calibrator Serial Number:	1173	Conveyance Method: Wireline Rig Type: Offshore_Fixed	
Calibration Cable Type:	7-46V-XS	Calibration Gain:	0.91		
Wheel Correction 1:	-5	Calibration Offset:	-437.00		
Wheel Correction 2:	-4				

Depth Control Parameters

Log Sequence:	Subsequent Log In the Well
Reference Log Name:	Esso Solar Composite
Reference Log Run Number:	Run Number not supplied
Reference Log Date:	20-Mar-2001

Depth Control Remarks

1. IDW used as primary depth control
2. Z chart used as secondary depth control
3. Log correlated to Esso Solar Composite Log of 20-Mar-2007, provided by Esso
4. Tool zeroed at SHU drill floor at 24.4m
5.
6.

DISCLAIMER

THE USE OF AND RELIANCE UPON THIS RECORDED-DATA BY THE HEREIN NAMED COMPANY (AND ANY OF ITS AFFILIATES, PARTNERS, REPRESENTATIVES, AGENTS, CONSULTANTS AND EMPLOYEES) IS SUBJECT TO THE TERMS AND CONDITIONS AGREED UPON BETWEEN SCHLUMBERGER AND THE COMPANY, INCLUDING: (a) RESTRICTIONS ON USE OF THE RECORDED-DATA; (b) DISCLAIMERS AND WAIVERS OF WARRANTIES AND REPRESENTATIONS REGARDING COMPANY'S USE OF AND RELIANCE UPON THE RECORDED-DATA; AND (c) CUSTOMER'S FULL AND SOLE RESPONSIBILITY FOR ANY INFERENCE DRAWN OR DECISION MADE IN CONNECTION WITH THE USE OF THIS RECORDED-DATA.

OTHER SERVICES1
OS1:
OS2:
OS3:
OS4:
OS5:
REMARKS: RUN NUMBER 1
All Logs Correlated to Esso Solar Composite Log Dated: 20-Mar-2001
Purpose of the run is to re-perforate the interval 1082.5-1088.5m MDKB using two separate Gun runs for remedial cement squeeze.
2-1/8" 6spf, 45 deg phased Powerjet Guns

SAFE Initiated
Gun # 1
Top Shot @ 1082.5m MDKB
CCL to top shot: 3.17m
CCL stop depth: 1079.33
Gun # 2
Top shot @ 1085.5m MDKB
CCL to top shot: 3.15m
CCL stop depth: 1082.35m MDKB
Day Crew: P.Battams, G.Brady
Night Crew: D.Stuckey, S.Kiss

RUN 1			RUN 2		
SERVICE ORDER #:		AUSL07270163	SERVICE ORDER #:		
PROGRAM VERSION:		15C0-309	PROGRAM VERSION:		
FLUID LEVEL:		0 m	FLUID LEVEL:		
LOGGED INTERVAL	START	STOP	LOGGED INTERVAL	START	STOP

EQUIPMENT DESCRIPTION					
RUN 1			RUN 2		

SURFACE EQUIPMENT		SURFACE EQUIPMENT	
WITM (SHM)		WITM (SHM)	

DOWNHOLE EQUIPMENT		DOWNHOLE EQUIPMENT	
MH-22 MH-22	9.30	MH-22 MH-22	9.30
EQF-43 EQF-43 2001	8.82	EQF-43 EQF-43 2001	8.82
PGGT-CC 209 PGGC PGGH-A	6.99	PGGT-CC 209 PGGC PGGH-A	6.99
Gamma Ray Casing Co Tension	0.48 TOOL ZERO	Gamma Ray Casing Co Tension	0.48 TOOL ZERO
AH-122	5.04	AH-122	5.04
AH-Flex AH-Flex 22	4.90	AH-Flex AH-Flex 22	4.90
SAH-G SAH-G 1032	4.37	SAH-G SAH-G 1032	4.37
MPD-MB	3.97	MPD-MB	3.97

ESIC
ESIC 606252

SAFE
SHM_GUN
GUN

3.47

3.05
3.05

TOOL BOTTOM

MAXIMUM STRING DIAMETER 2.13 IN
MEASUREMENTS RELATIVE TO TOOL ZERO
ALL LENGTHS IN METERS

ESIC
ESIC 606252

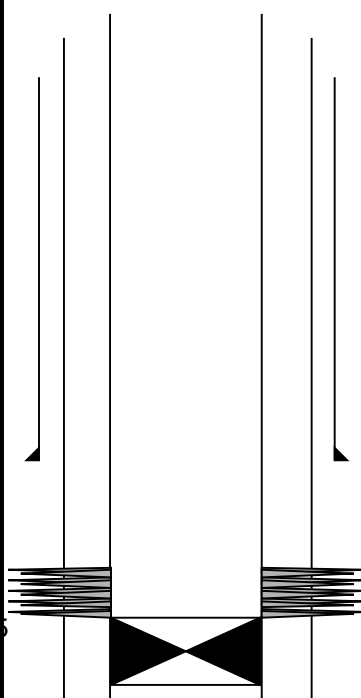
SAFE
SHM_GUN
GUN

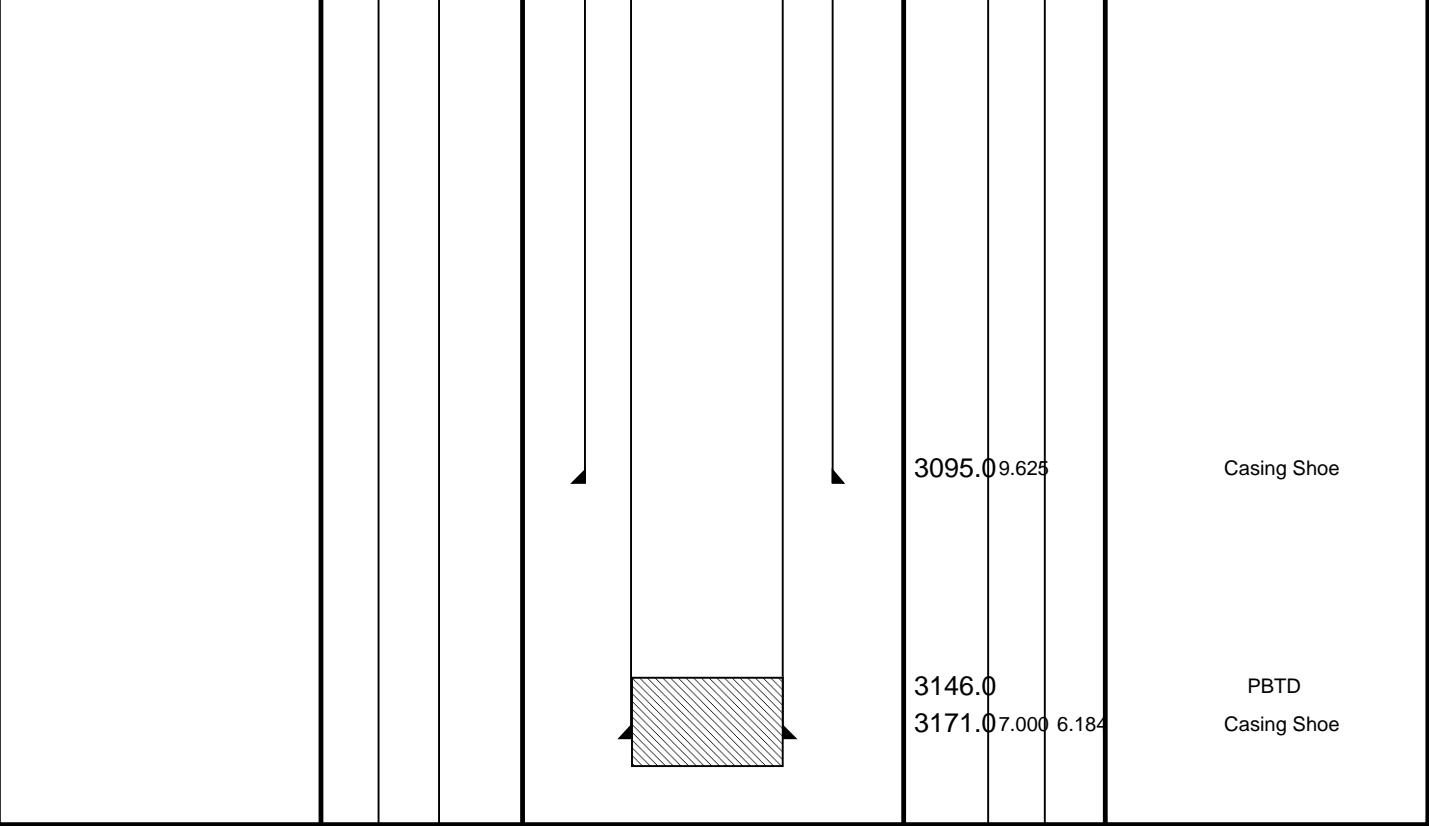
3.47

3.05
3.05

TOOL BOTTOM

MAXIMUM STRING DIAMETER 2.13 IN
MEASUREMENTS RELATIVE TO TOOL ZERO
ALL LENGTHS IN METERS

Production String	(in)		(m)	Well Schematic	(m)	(in)		Casing String
	OD	ID	MD		MD	OD	ID	
Plug	7.000	0.000	1094.5			7.000	6.184	Casing String
						9.625		Casing String
						13.375		Casing String
					797.0	13.375		Casing Shoe
					1082.5			Old Squeezed Perforations
					1094.5			New Perforation Zone
					1082.5			
					1088.5			



Job Events Summary

MAXIS Field Log

Schlumberger Job Event Summary

Time	Elapsed Time	Depth (M)	File
Log Pass (down)	28-Sep-2007 5:17	000:23	397.8 – 1107.9 PERFO_005LDP
Log Pass (up)	28-Sep-2007 5:40	000:00	1107.5 – 1105.7 PERFO_006LUP
Log Pass (up)	28-Sep-2007 5:41	000:13	1106.9 – 1002.6 PERFO_007LUP
Log Pass (up)	28-Sep-2007 6:12	000:04	1088.6 – 1052.3 PERFO_010LUP
Log Pass (up)	28-Sep-2007 6:24	000:08	1088.3 – 1021.8 PERFO_011LUP
Log Pass (up)	28-Sep-2007 6:32	000:19	1088.4 – 1056.4 PERFO_012LUP
Log Pass (up)	28-Sep-2007 6:52	000:05	1088.4 – 1079.4 PERFO_013LUP
Log Pass (up)	28-Sep-2007 7:10	000:09	1079.3 – 1028.9 PERFO_015LUP
Log Pass (down)	1-Oct-2007 5:01	000:12	610.4 – 1059.0 PERFO_028LDP
Log Pass (up)	1-Oct-2007 5:15	000:06	1089.5 – 1034.8 PERFO_030LUP
Log Pass (up)	1-Oct-2007 5:30	000:06	1090.7 – 1044.5 PERFO_031LUP
Log Pass (up)	1-Oct-2007 5:41	000:05	1092.1 – 1082.3 PERFO_033LUP
Log Pass (up)	1-Oct-2007 5:48	000:25	1090.9 – 1046.2 PERFO_034LUP
Log Pass (up)	1-Oct-2007 6:13	000:10	1037.5 – 382.2 PERFO_035LUP



Gun 1 Log Out of Position

MAXIS Field Log

Company: Esso Australia Pty Ltd

Well: Barracouta A-3w

Output DLIS Files

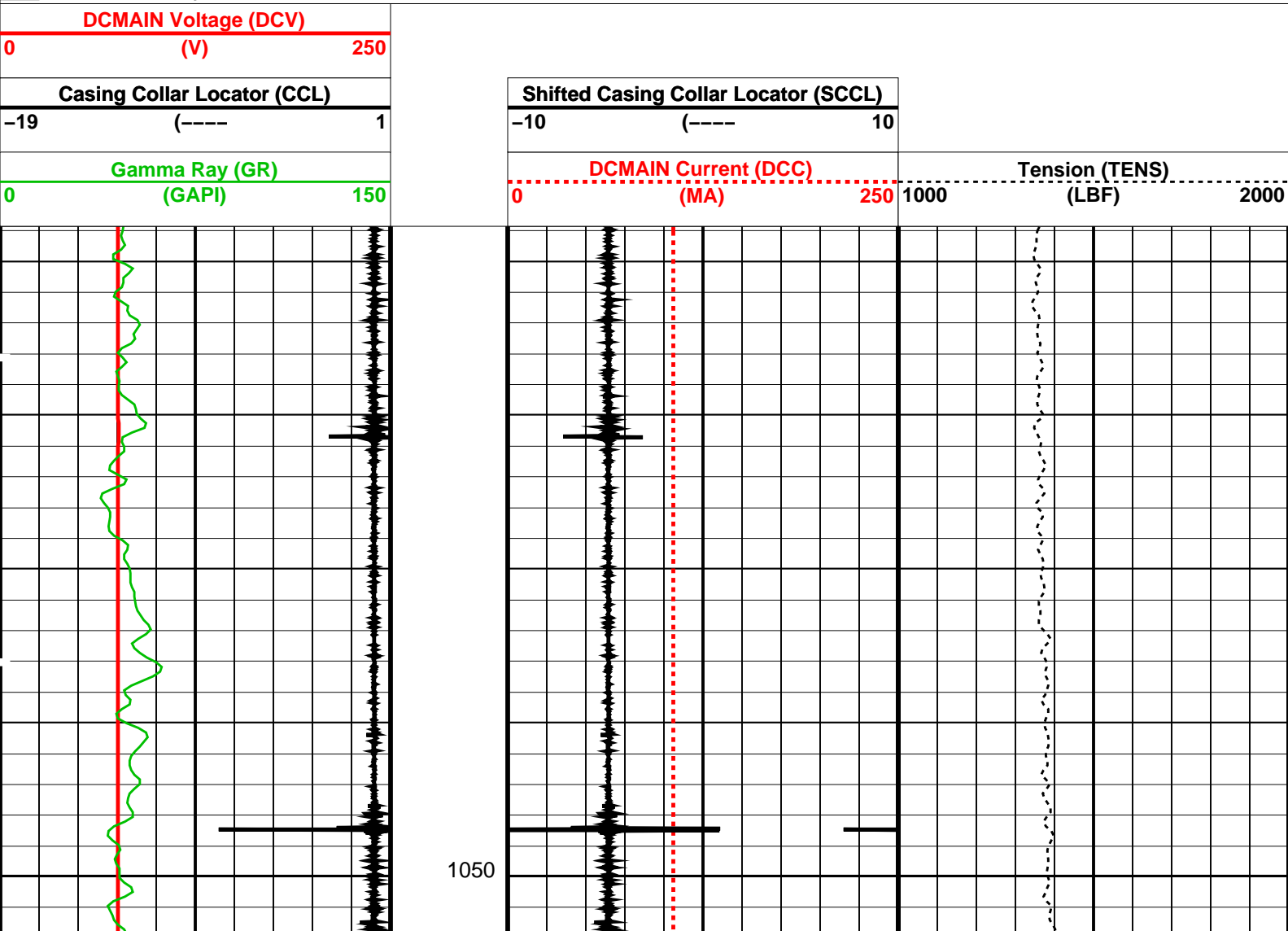
DEFAULT PERFO_015LUP FN:14 PRODUCER 28-Sep-2007 07:10 1079.3 M 1028.9 M

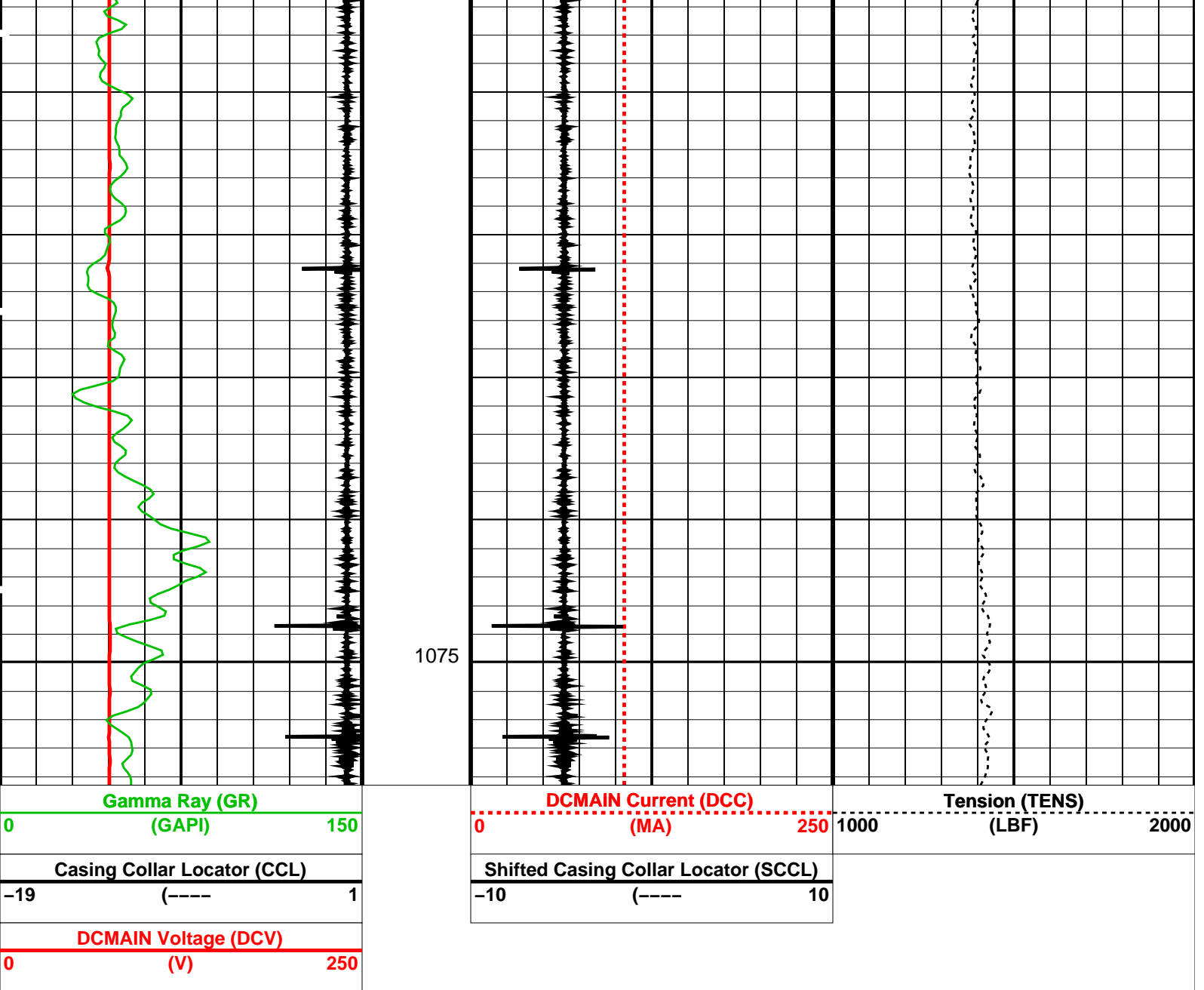
OP System Version: 15C0-309 MCM

SHM_GUN 15C0-309 PGGT-C 15C0-309

PIP SUMMARY

☒ Time Mark Every 60 S





PIP SUMMARY

Time Mark Every 60 S

Format: PERFO Vertical Scale: 1:200

Graphics File Created: 28-Sep-2007 07:10

OP System Version: 15C0-309

MCM

SHM_GUN 15C0-309

PGGT-C

15C0-309

Output DLIS Files

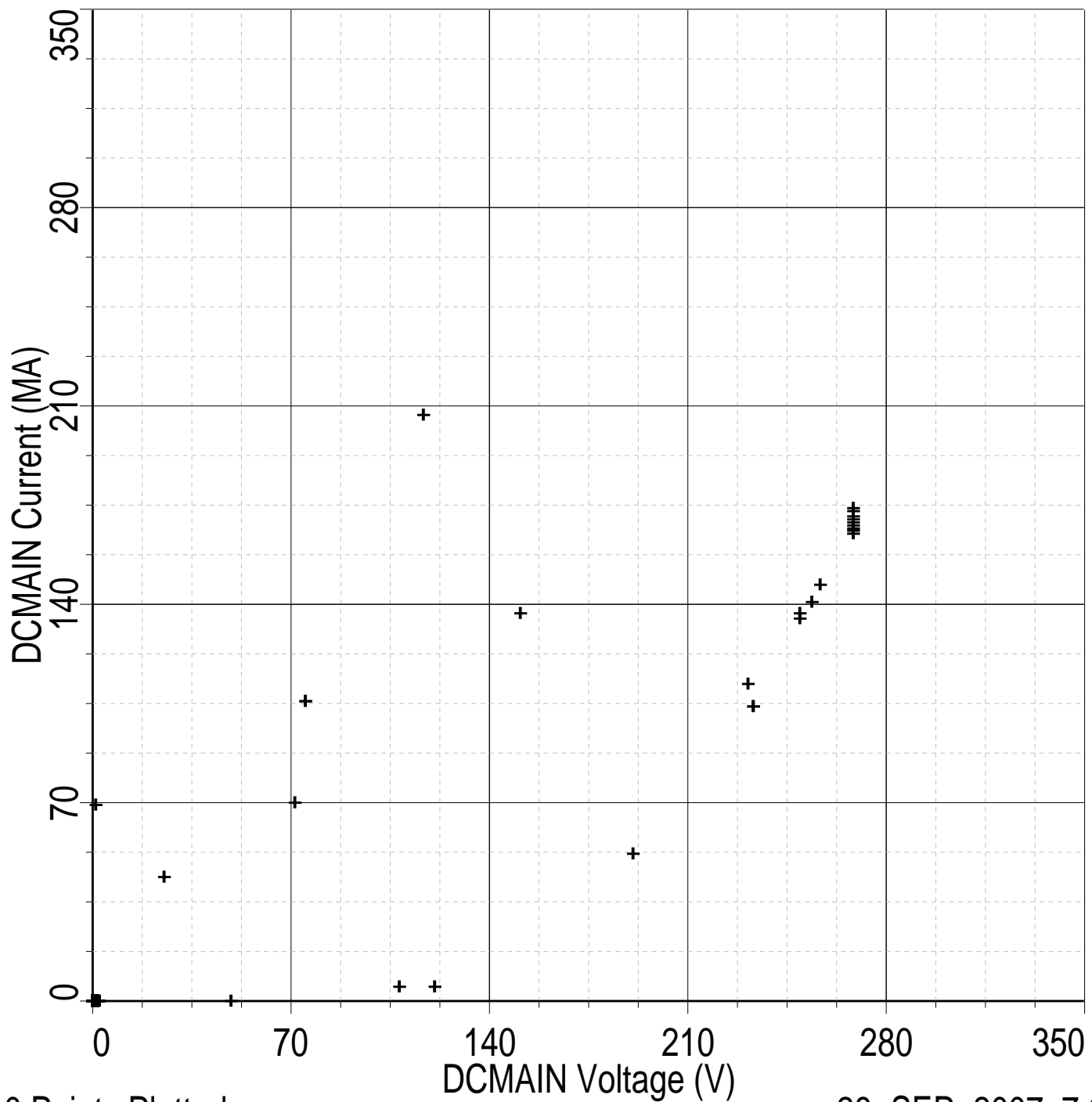
DEFAULT PERFO_015LUP

FN:14 PRODUCER 28-Sep-2007 07:10

Schlumberger

Gun 1 Firing Record

Index: 12192.0 – 12129.2 M



110 Points Plotted

28-SEP-2007 7:02

Schlumberger

Gun 1
Log Into Position

MAXIS Field Log

OP System Version: 15C0-309

MCM

SHM_GUN

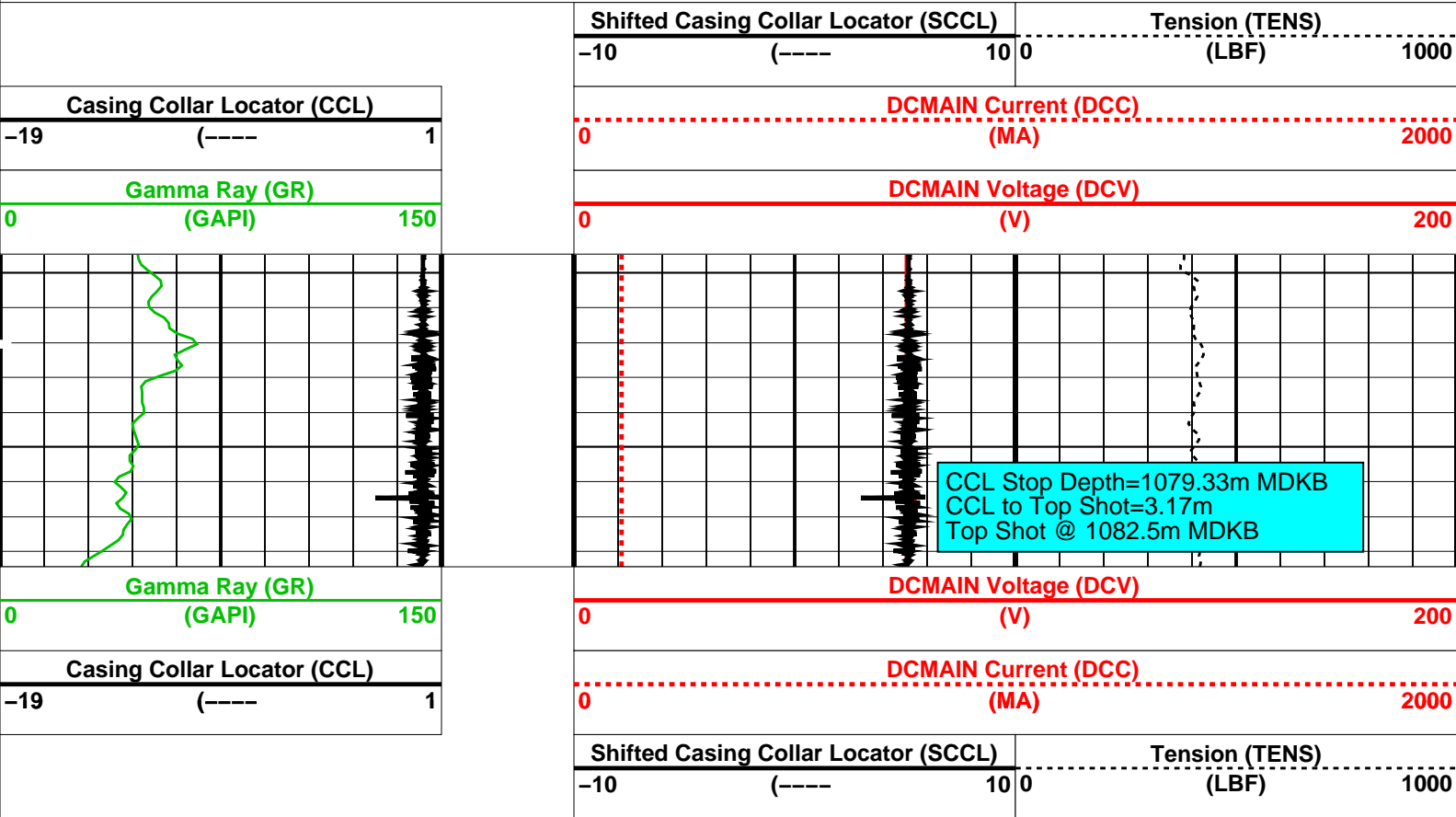
15C0-309

PGGT-C

15C0-309

PIP SUMMARY

Time Mark Every 60 S



PIP SUMMARY

Time Mark Every 60 S

Format: PERFO

Vertical Scale: 1:200

Graphics File Created: 28-Sep-2007 06:52

OP System Version: 15C0-309

MCM

SHM_GUN

15C0-309

PGGT-C

15C0-309

Output DLIS Files

DEFAULT

PERFO_013LUP

FN:12

PRODUCER

28-Sep-2007 06:52

Schlumberger

Gun 1

Correlation Pass

MAXIS Field Log

OP System Version: 15C0-309

MCM

SHM_GUN

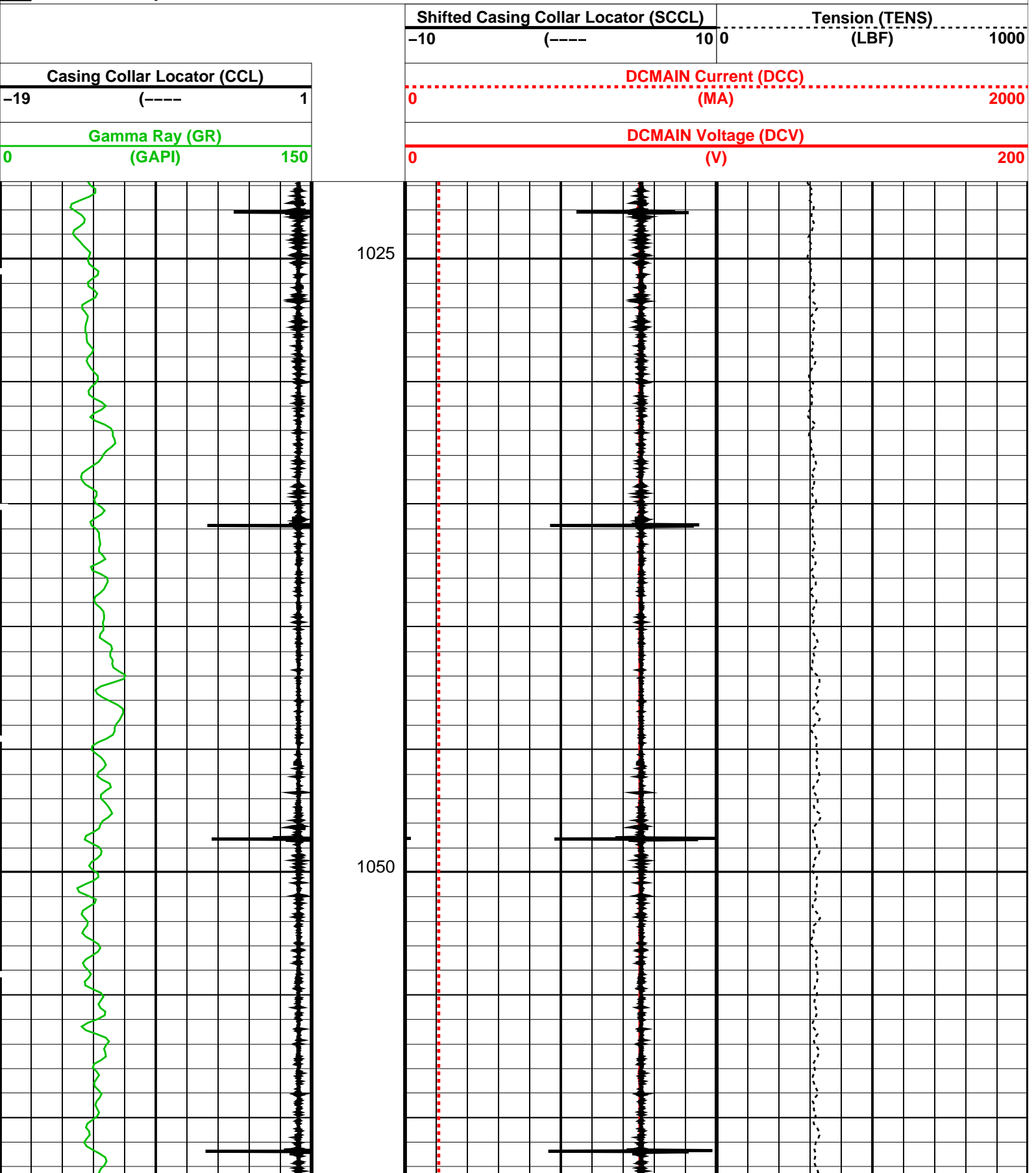
15C0-309

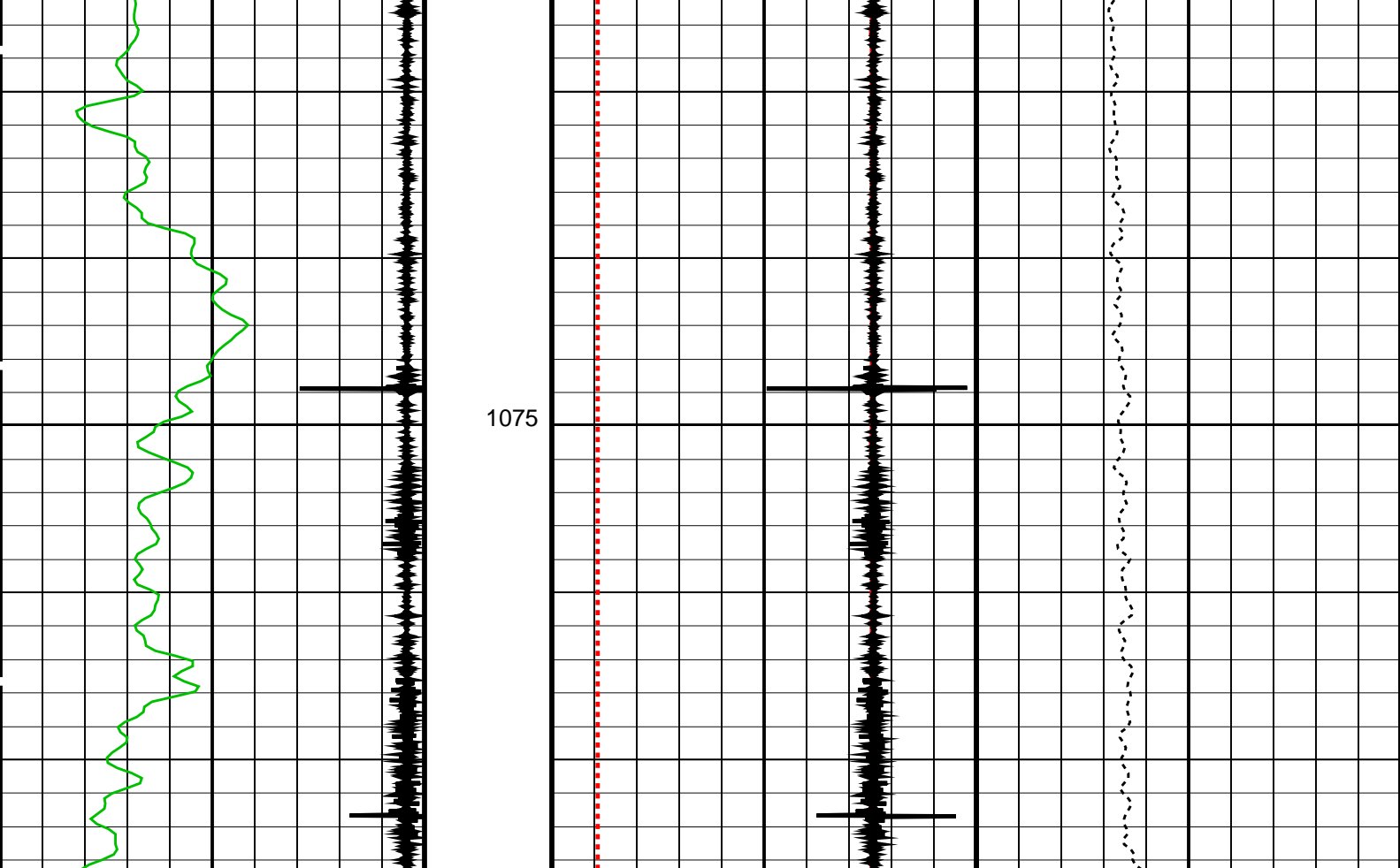
PGGT-C

15C0-309

PIP SUMMARY

Time Mark Every 60 S





Gamma Ray (GR)
(GAPI) 0 150

Casing Collar Locator (CCL)
-19 (----) 1

DCMAIN Voltage (DCV)
(V) 0 200

DCMAIN Current (DCC)
(MA) 0 2000

Shifted Casing Collar Locator (SCCL) -10 (----) 10 0 Tension (TENS)
(LBF) 1000

PIP SUMMARY

Time Mark Every 60 S

Format: PERFO Vertical Scale: 1:200 Graphics File Created: 28-Sep-2007 06:24

OP System Version: 15C0-309
MCM

SHM_GUN 15C0-309 PGGT-C 15C0-309

Output DLIS Files

DEFAULT PERFO_011LUP FN:10 PRODUCER 28-Sep-2007 06:24



Gun 2
Shooting Pass

MAXIS Field Log

Output DLIS Files

DEFAULT PERFO_034LUP FN:33 PRODUCER 01-Oct-2007 05:48 1090.9 M 1046.2 M

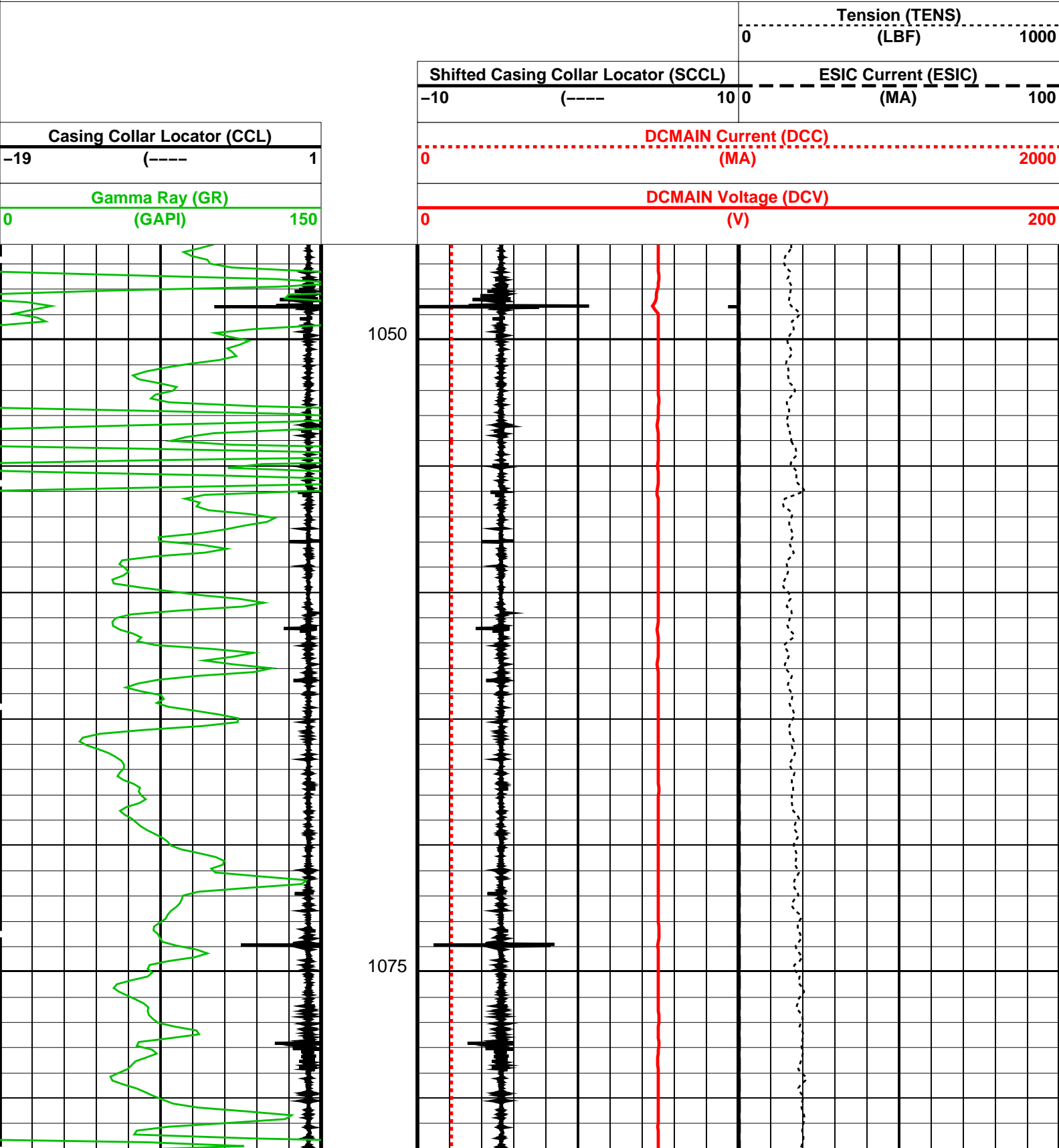
OP System Version: 15C0-309

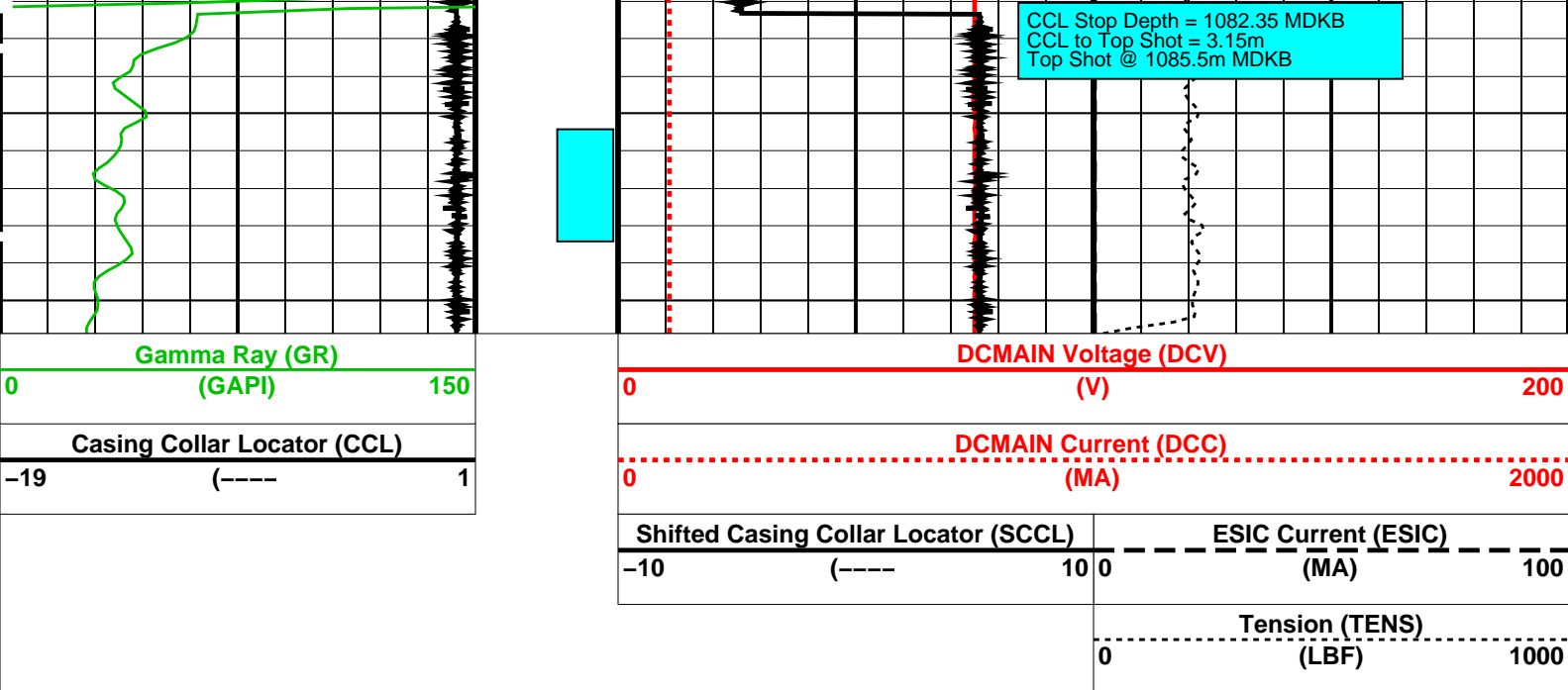
MCM

SHM_GUN 15C0-309 SAFE 15C0-309
PGGT-C 15C0-309

PIP SUMMARY

Time Mark Every 60 S





PIP SUMMARY

Time Mark Every 60 S

Parameters				
DLIS Name		Description	Value	
SAFE: SAFE DETONATING SYSTEM				
ESDT	ESIC Shot Depth Temperature		-17.7778	DEGC
Format: PERFO	Vertical Scale: 1:200		Graphics File Created: 01-Oct-2007 05:48	
OP System Version: 15C0-309				
MCM				
SHM_GUN	15C0-309	SAFE	15C0-309	
PGGT-C	15C0-309			
Output DLIS Files				
DEFAULT	PERFO_034LUP	FN:33	PRODUCER	01-Oct-2007 05:48



Gun 2 Correlation Pass

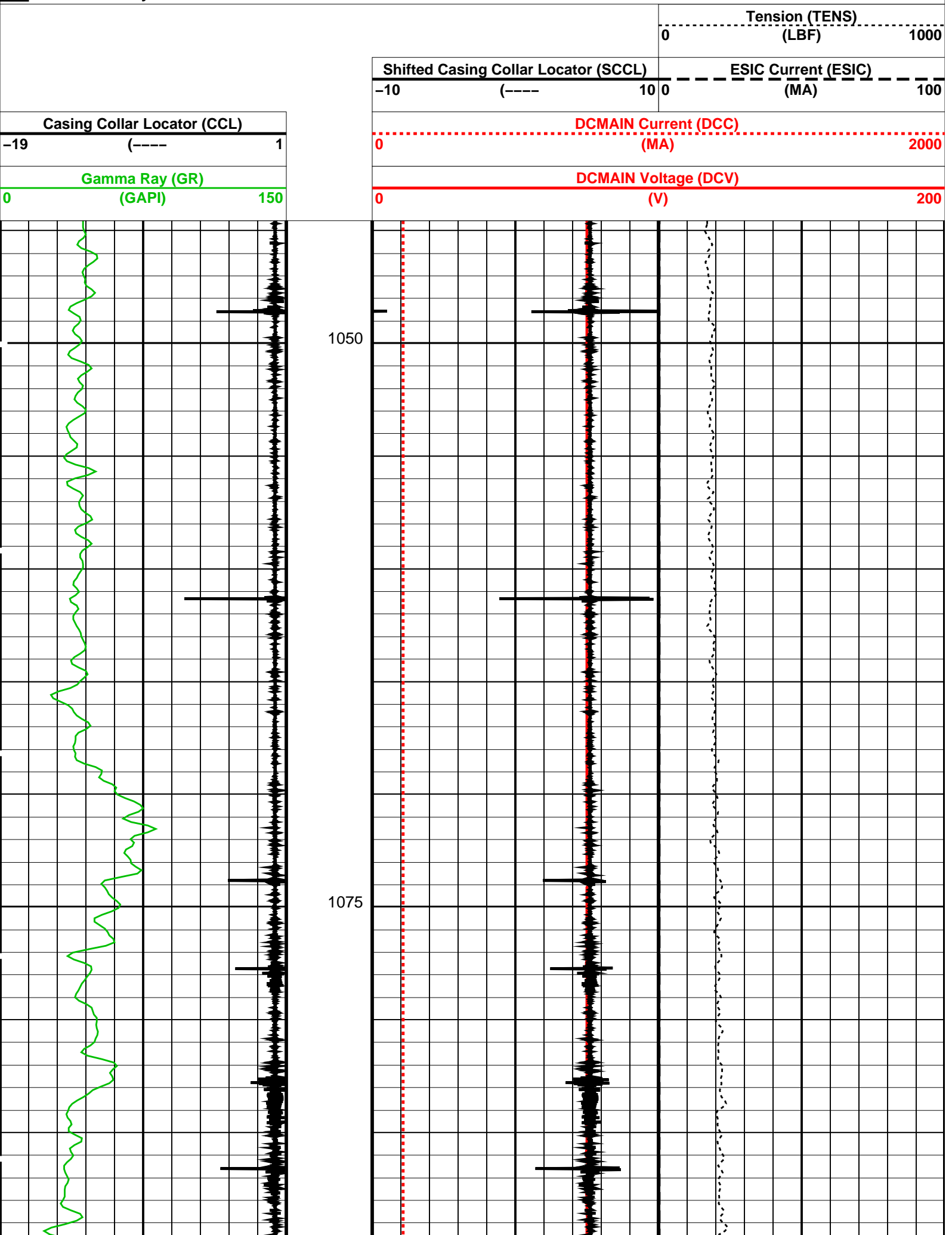
MAXIS Field Log

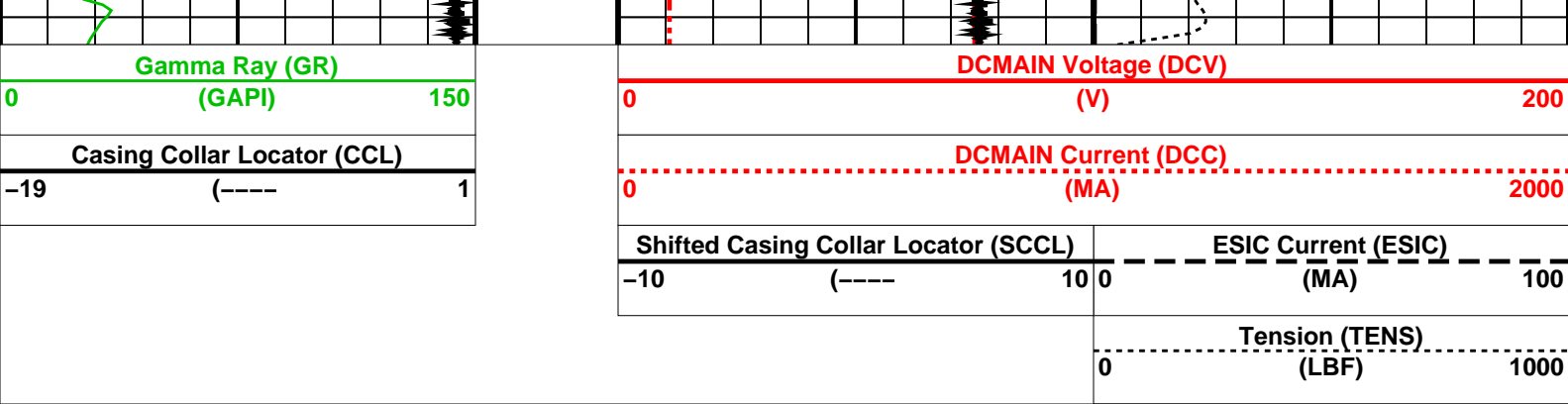
Company: Esso Australia Pty Ltd

Well: Barracouta A-3w

Output DLIS Files						
DEFAULT	PERFO_031LUP	FN:30	PRODUCER	01-Oct-2007 05:30	1090.7 M	1044.5 M
OP System Version: 15C0-309						
MCM						
SHM_GUN	15C0-309	SAFE	15C0-309			
PGGT-C	15C0-309					

PIP SUMMARY





PIP SUMMARY

Time Mark Every 60 S

Parameters		
DLIS Name	Description	Value
SAFE: SAFE DETONATING SYSTEM		
ESDT	ESIC Shot Depth Temperature	-17.7778 DEGC

Format: PERFO Vertical Scale: 1:200 Graphics File Created: 01-Oct-2007 05:30

OP System Version: 15C0-309			
MCM			
SHM_GUN	15C0-309	SAFE	15C0-309
PGGT-C	15C0-309		

Output DLIS Files			
DEFAULT	PERFO_031LUP	FN:30	PRODUCER 01-Oct-2007 05:30

Company:

Well:

Field:

Rig:

Country:

Esso Australia Pty Ltd

Barracouta A-3w

Gippsland Basin

ISS SHU

Australia

Schlumberger

2-1/8 Power Enerjet

GR-CCL