

Company: **Esso Australia Pty Ltd**

Well: **Barracouta A-3w**
Field: **Gippsland Basin**
Rig: **SHU**

Country: **Australia**

Free Point Indication
1.68" Drift-CCL
Back Off

LOCATION

Gippsland Basin
Bass Strait

Elev.: K.B. 19.6 m
G.L. -45.7 m
D.F. 19.6 m

Permanent Datum: _____
Log Measured From: _____
Drilling Measured From: _____

Mean Sea Level _____
Rig Floor _____
Original KB _____

Elev.: 0 m
19.6 m above Perm. Datum

Rig: SHU
Field: Gippsland Basin
Location: Gippsland
Well: Barracouta A-3w
Company: Esso Australia Pty Ltd

State: Victoria

Max. Well Deviation
0 deg

Longitude

Latitude

				Run 1	Run 2	R
PVT DATA						
Oil Density						
Water Salinity						
Gas Gravity						
Bo						
Bw						
1/Bg						
Bubble Point Pressure						
Bubble Point Temperature						
Solution GOR						
Maximum Deviation				0 deg		
CEMENTING DATA						
Primary/Squeeze				Primary		
Casing String No						
Lead Cement Type						
Volume						
Density						
Water Loss						
Additives						
Tail Cement Type						
Volume						
Density						
Water Loss						
Additives						
Expected Cement Top						

Logging Date	19-Sep-2007		
Run Number	1		
Depth Driller	3212 m		
Schlumberger Depth	1075.6 m		
Bottom Log Interval	1075.6 m		
Top Log Interval	602 m		
Casing Fluid Type	Sea Water		
Salinity			
Density	8.6 lbm/gal		
Fluid Level	0 m		
BIT/CASING/TUBING STRING			
Bit Size	10.750 in		
From	797.2 m		
To	3212 m		
Casing/Tubing Size	7.000 in		
Weight	29 lbm/ft		
Grade	L-80		
From	33 m		
To	3146.6 m		
Maximum Recorded Temperatures			
Logger On Bottom	19-Sep-2007		19:15
Unit Number	3827	AUSL	
Recorded By	Chris Rowand, Alex Sword		
Witnessed By	Mr M.Wilson, Mr R.Schuback		

Logging Date			
Run Number			
Depth Driller			
Schlumberger Depth			
Bottom Log Interval			
Top Log Interval			
Casing Fluid Type			
Salinity			
Density			
Fluid Level			
BIT/CASING/TUBING STRING			
Bit Size			
From			
To			
Casing/Tubing Size			
Weight			
Grade			
From			
To			
Maximum Recorded Temperatures			
Logger On Bottom			
Unit Number			
Recorded By			
Witnessed By			

Run 3	Run 4

DEPTH SUMMARY LISTING

Date Created: 24-SEP-2007 14:54:38

Depth System Equipment

Depth Measuring Device		Tension Device		Logging Cable	
Type:	IDW-B	Type:	CMTD-B/A	Type:	7-46V-XS
Serial Number:	794	Serial Number:	1711	Serial Number:	71260
Calibration Date:	20-Mar-2007	Calibration Date:	17-Aug-2007	Length:	5529.99 M
Calibrator Serial Number:	1009	Calibrator Serial Number:	1173	Conveyance Method:	Wireline
Calibration Cable Type:	7-46V-XS	Calibration Gain:	1.00	Rig Type:	LAND
Wheel Correction 1:	-3	Calibration Offset:	-536.00		
Wheel Correction 2:	-4				

Depth Control Parameters

Log Sequence:	Subsequent Trip To the Well
Reference Log Name:	Downhole BHA
Reference Log Run Number:	1
Reference Log Date:	19-Sep-2007
Subsequent Trip Down Log Correction:	-50000.00 M

Depth Control Remarks

1. All Schlumberger depth policies adhered too.
2. IDW used as primary depth reference.
3. Z-Chart used as Secondary depth reference
- 4.
- 5.
- 6.

DISCLAIMER

THE USE OF AND RELIANCE UPON THIS RECORDED-DATA BY THE HEREIN NAMED COMPANY (AND ANY OF ITS AFFILIATES, PARTNERS, REPRESENTATIVES, AGENTS, CONSULTANTS AND EMPLOYEES) IS SUBJECT TO THE TERMS AND CONDITIONS AGREED UPON BETWEEN SCHLUMBERGER AND THE COMPANY, INCLUDING: (a) RESTRICTIONS ON USE OF THE RECORDED-DATA; (b) DISCLAIMERS AND WAIVERS OF WARRANTIES AND REPRESENTATIONS REGARDING COMPANY'S USE OF AND RELIANCE UPON THE RECORDED-DATA; AND (c) CUSTOMER'S FULL AND SOLE RESPONSIBILITY FOR ANY INFERENCE DRAWN OR DECISION MADE IN CONNECTION WITH THE USE OF THIS RECORDED-DATA.

OTHER SERVICES1	OTHER SERVICES2
OS1:	OS1:
OS2:	OS2:
OS3:	OS3:
OS4:	OS4:
OS5:	OS5:
REMARKS: RUN NUMBER 1	REMARKS: RUN NUMBER 2
All logs correlated to Tubing Tally supplied by Company Man.	
Purpose of the operation is to determine the free point of the work string. Once determined run Back off shot top desired depth and attempt to back off drill at free point.	
100% free point indication at 1065mMDKB.	

Decision made to back-off three joints of HWDP above top of BHA.
Worked 4000lbs of LH torque and applied 48K pull on tubing(10k above neutral)
Back-off shot consisted of 5 strands of 60GR primacord SAFE initiated
CCL to centre of shot = 2m.

Day Crew: Brendan Glover, Max Hancock
Night Crew: Dave Stuckey, Simon Kiss
Performed By Schlumberger.


RUN 1			RUN 2		
SERVICE ORDER #:			SERVICE ORDER #:		
PROGRAM VERSION:			PROGRAM VERSION:		
FLUID LEVEL:			FLUID LEVEL:		
LOGGED INTERVAL	START	STOP	LOGGED INTERVAL	START	STOP

EQUIPMENT DESCRIPTION					
RUN 1			RUN 2		

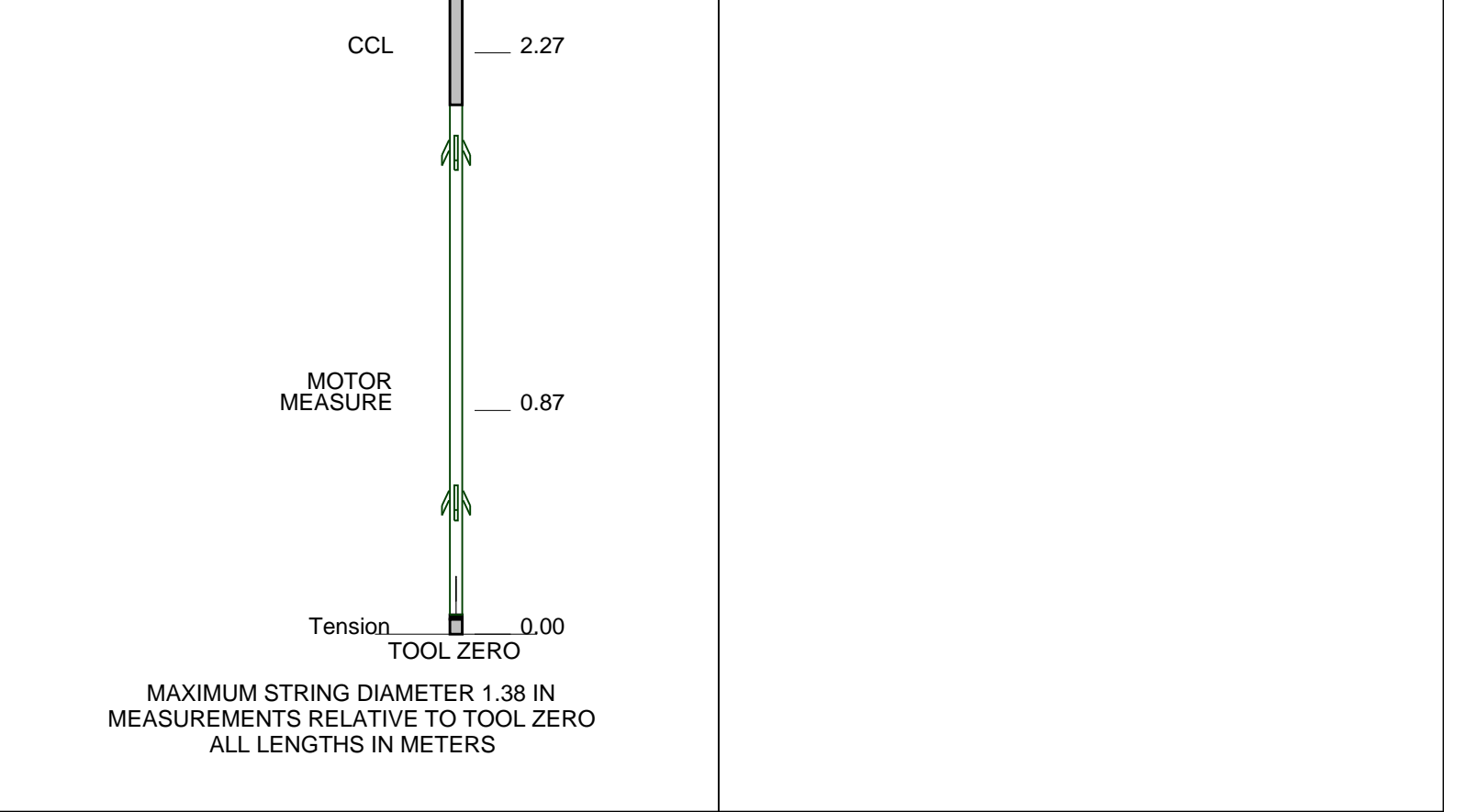
SURFACE EQUIPMENT
FPIM-A 719

DOWNHOLE EQUIPMENT

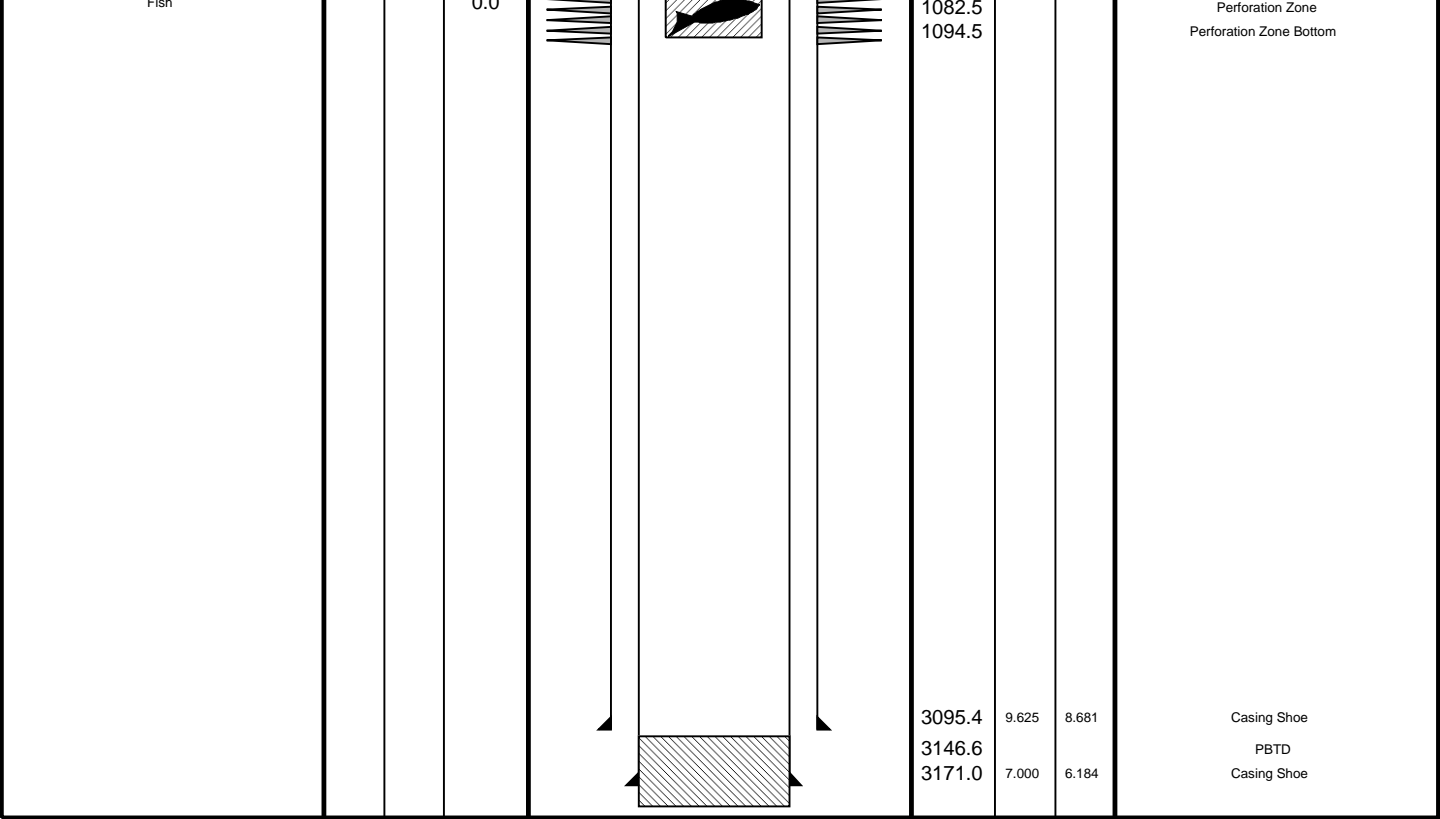
FPIT-D
PEH-L 719
FPIC-A 785
FPIH-A 785
FPIS-B 8001
BN



3.48



Production String	(in)		(m)	Well Schematic	(m)	(in)		Casing String
	OD	ID	MD		MD	OD	ID	
Drill String	3.500	2.700	0.0		33.5	7.000	6.184	Casing String Casing String Casing String
					41.0	9.625	8.681	
					41.0	13.375	12.615	
Casing String					797.2	13.375	12.615	Casing Shoe



String Shot Shooting Pass

MAXIS Field Log

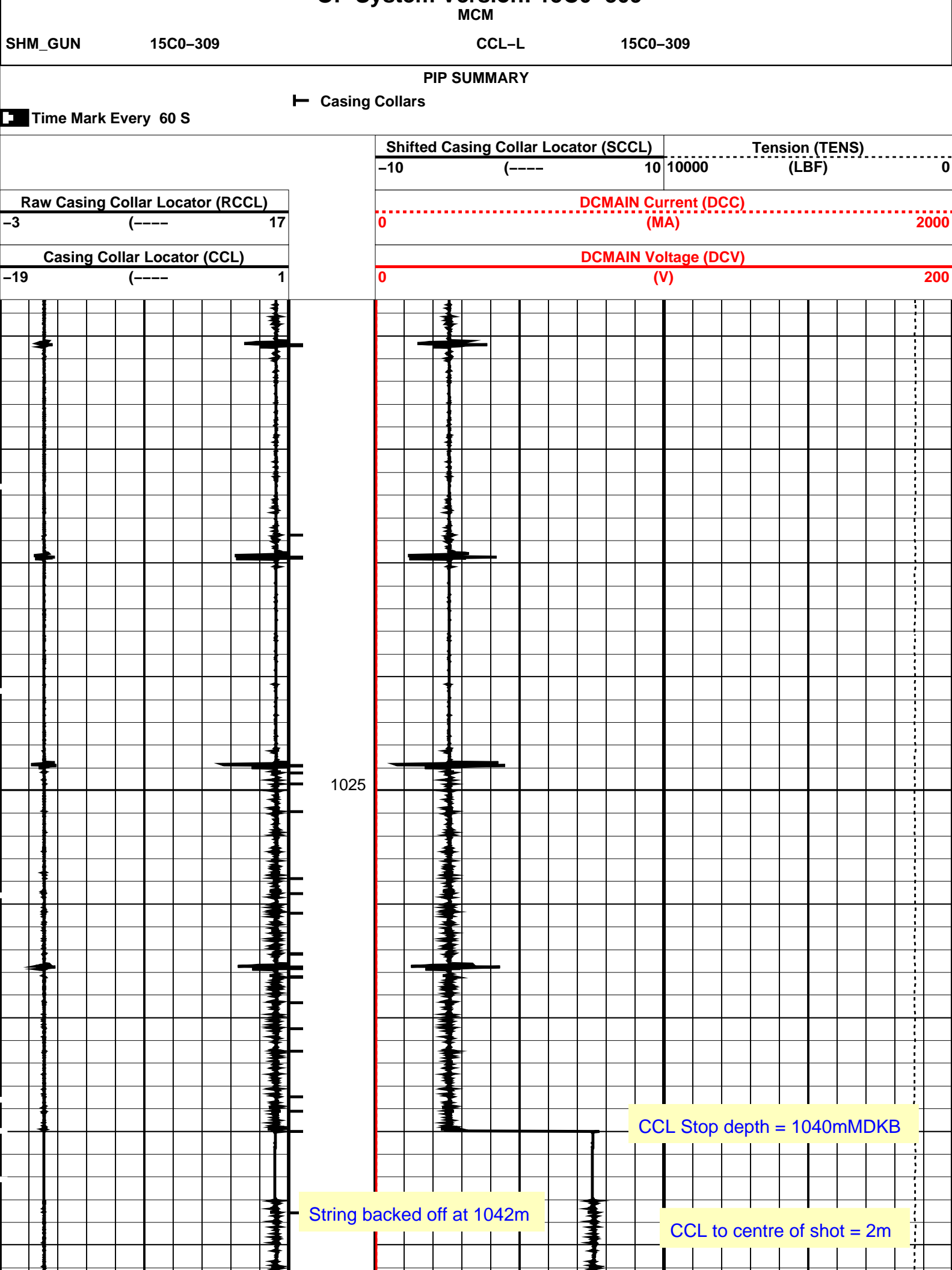
PERFO2 Operational Summary Listing

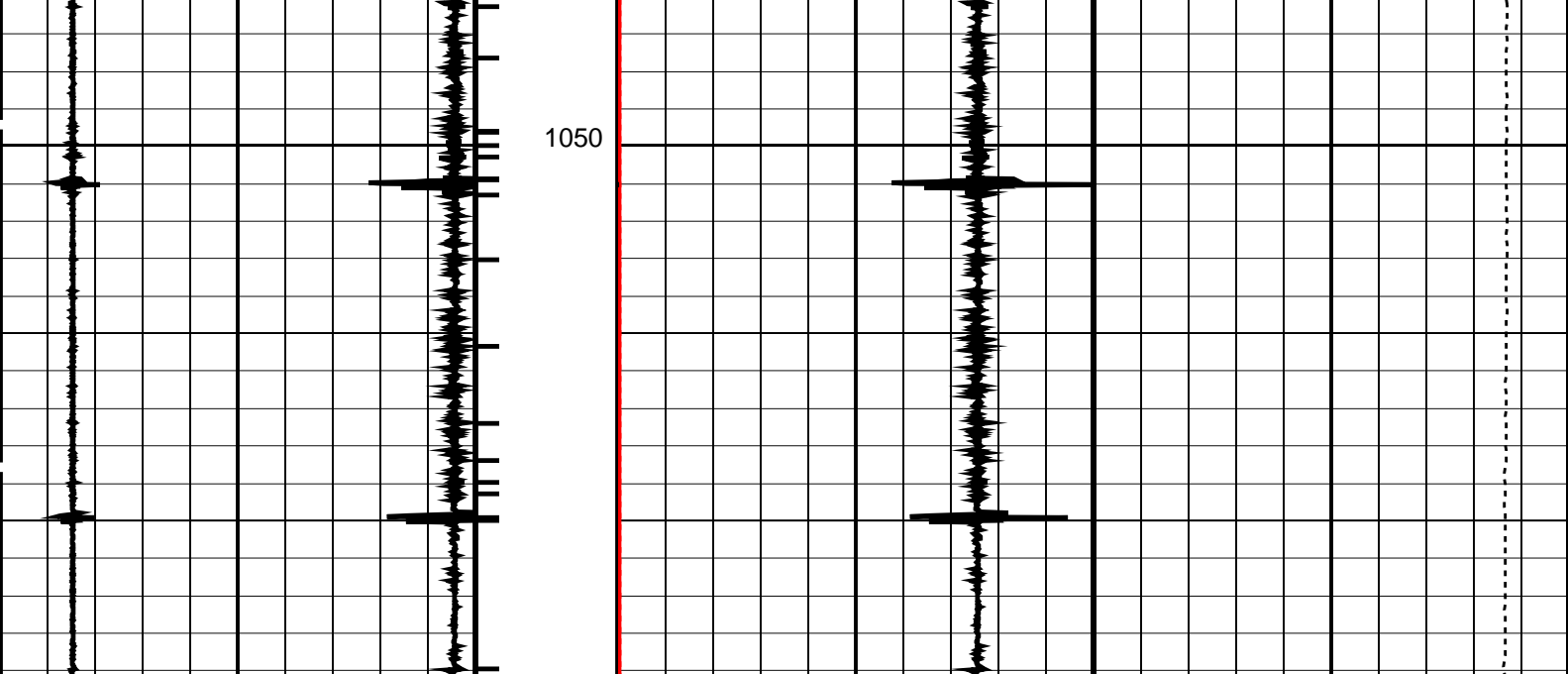
Device	Status	Req Depth (M)	Obs Depth (M)	Time Used
GUN1	Used	1042.0	1042.0	Thu Sep 20 03:39:47 2007

Company: Well:

Output DLIS Files

DEFAULT	PERFO_138LUP	FN:137	PRODUCER	20-Sep-2007 03:34	1064.2 M	1003.4 M
---------	--------------	--------	----------	-------------------	----------	----------





Casing Collar Locator (CCL)		DCMAIN Voltage (DCV)	
-19	(----	0	200
1			
Raw Casing Collar Locator (RCCL)		DCMAIN Current (DCC)	
-3	(----	0	2000
17			
Shifted Casing Collar Locator (SCCL)		Tension (TENS)	
-10	(----	10	10000
			(LBF)
			0

PIP SUMMARY

← Casing Collars

Time Mark Every 60 S

Parameters

DLIS Name	Description	Value
CCL-L: Casing Collar Locator		
CCLD	CCL reset delay	12 IN
CCLT	CCL Detection Level	0.3 V

Format: PERFO Vertical Scale: 1:200 Graphics File Created: 20-Sep-2007 03:34

OP System Version: 15C0-309

MCM

SHM_GUN 15C0-309 CCL-L 15C0-309

Output DLIS Files

DEFAULT PERFO_138LUP FN:137 PRODUCER 20-Sep-2007 03:34

Schlumberger

**String Shot
Correlation Pass**

MAXIS Field Log

Company: Well:

Output DLIS Files

DEFAULT PERFO_137LUP FN:136 PRODUCER 20-Sep-2007 02:55 1064.7 M 981.9 M

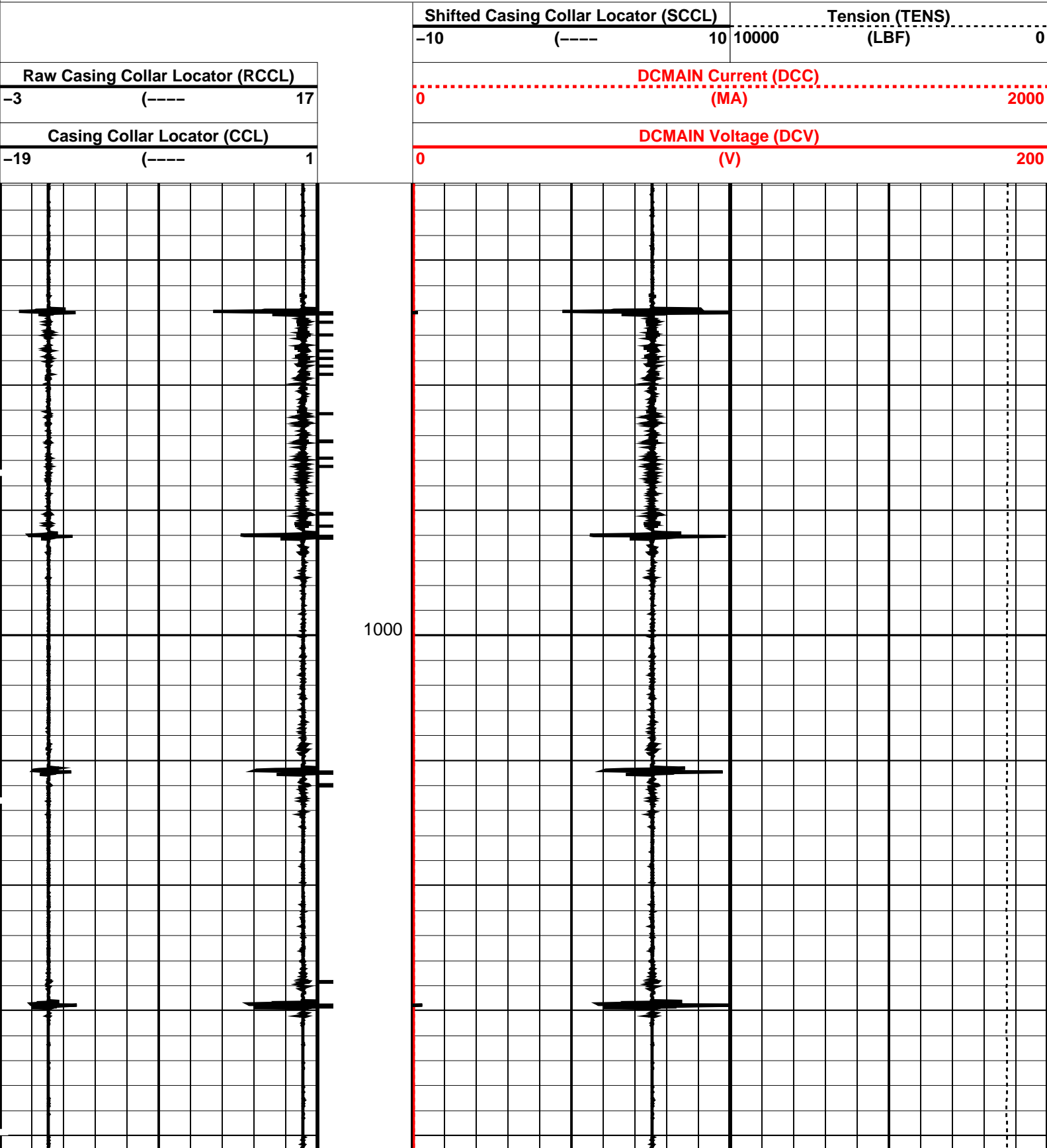
OP System Version: 15C0-309
MCM

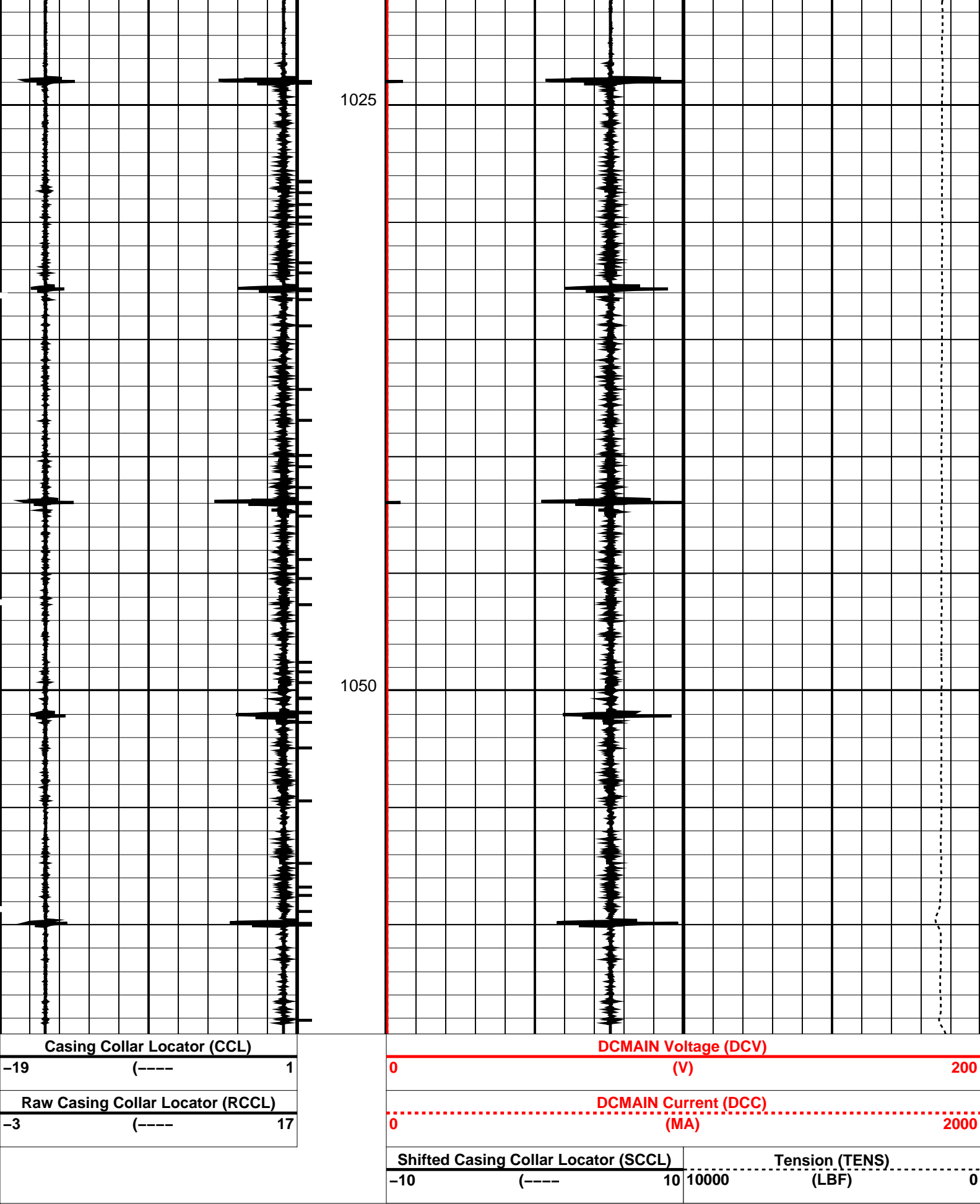
SHM_GUN 15C0-309 CCL-L 15C0-309

PIP SUMMARY

└─ Casing Collars

Time Mark Every 60 S





Time Mark Every 60 S

Parameters

DLIS Name	Description	Value
CCLD	CCL-L: Casing Collar Locator	12
CCLT	CCL reset delay	0.3
	CCL Detection Level	IN V
Format: PERFO	Vertical Scale: 1:200	Graphics File Created: 20-Sep-2007 02:55
OP System Version: 15C0-309		
MCM		
SHM_GUN	15C0-309	CCL-L 15C0-309
Output DLIS Files		
DEFAULT	PERFO_137LUP	FN:136 PRODUCER 20-Sep-2007 02:55



Free Point Summary

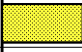

MAXIS Field Log

FPIT Station Summary Table											
#	Station Depth (M)	Element Type	Linear Weight (KG/M)	STRETCH				TORQUE			
				OverPull (MTON)	Stretch (USTR)	day/time	%Free (%)	Turn	Torque (R/KF)	day/time	%Free (%)
5	745.03	DRILL_PIPE	19.79	11.40	228.12	19/17:03	98.17	---	---	---	---
7	1064.11	HEAVY_DP	37.50	11.40	155.28	19/19:58	100.00	---	---	---	---
6	1074.75	HEAVY_DP	37.50	11.40	101.88	19/19:16	76.02	1.50	0.26	19/19:42	76.46
Graphics File Name: FPIT_SS.PDS						Graphics File Created: 24-Sep-2007 15:11					

Calibration and Check Summary							
Measurement	Nominal	Master	Before	After	Change	Limit	Units
Free Point Indicator Tool Wellsite Calibration – Stretch and Torque Calibration							
Before: 19-Sep-2007 12:14							
Stretch Test Jig Gain	1.000	N/A	1.134	N/A	N/A	N/A	
Torque Test Jig Gain	1.000	N/A	0.9939	N/A	N/A	N/A	

Free Point Indicator Tool / Equipment Identification			
Primary Equipment:			
Free Point Indicator Sonde	FPIS – B	8001	
Free Point Indicator Cartridge	FPIC – A	785	
Auxiliary Equipment:			
Free Point Indicator Housing	FPIH – A	785	

Free Point Indicator Tool Wellsite Calibration
Stretch and Torque Calibration

Phase	Stretch Test Jig Gain	Value	Phase	Torque Test Jig Gain	Value
Before		1.134	Before		0.9939
	0.7500 (Minimum)	1.000 (Nominal)		0.7500 (Minimum)	1.000 (Nominal)
		1.250 (Maximum)			1.250 (Maximum)
Before: 19-Sep-2007 12:14					

Company:	Esso Australia Pty Ltd	Schlumberger
Well:	Barracouta A-3w	
Field:	Gippsland Basin	
Rig:	SHU	
Country:	Australia	
	Free Point Indication	
	1.68" Drift-CCL	
	Back Off	