

Company: **Esso Australia Pty Ltd.**

Well: **FTA A17a**

Field: **Bass Strait**

Rig: **175**

Country: **Australia**

Junk Basket with 6" Gauge Ring  
Max-R Setting Record

Rig: 175  
Field: Bass Strait  
Location: Gippsland Basin  
Well: FTA A17a  
Company: Esso Australia Pty Ltd.

LOCATION

LOCATION			
Gippsland Basin Bass Strait	Elev.:  K.B. 42.49 m G.L. -69 m D.F. 42.49 m		
Permanent Datum: Log Measured From: Drilling Measured From:	Mean Sea Level Drill Floor Drill Floor Elev.: 42.49 m 0.0 m above Perm. Datum		
State: Victoria	Max. Well Deviation 42 deg Longitude 148° 06' 15.1E Latitude 38° 18' 45.24"S		

Logging Date	19-Sep-2007		
Run Number	1		
Depth Driller	3025 m		
Schlumberger Depth	3005.5 m		
Bottom Log Interval	2975.75 m		
Top Log Interval	2975.75 m		
Casing Fluid Type	Brine / SPM		
Salinity			
Density			
Fluid Level			
BIT/CASING/TUBING STRING			
Bit Size	8.500 in		
From	0 m		
To	3025 m		
Casing/Tubing Size	7.000 in		
Weight	26 lbm/ft		
Grade	L-80		
From	0 m		
To	3025 m		
Maximum Recorded Temperatures			
Logger On Bottom	24-Sep-2007	0:31	
Unit Number	3829	AUSL	
Recorded By	Owen Darby		
Witnessed By	Glen Campbell and Dan Daniels		

PVT DATA

Oil Density	Run 1	Run 2	
Water Salinity			
Gas Gravity			
Bo			
Bw			
1/Bg			
Bubble Point Pressure			
Bubble Point Temperature			
Solution GOR			
Maximum Deviation	42 deg		
CEMENTING DATA			
Primary/Squeeze	Primary		
Casing String No			
Lead Cement Type			
Volume			
Density			
Water Loss			
Additives			
Tail Cement Type			
Volume			
Density			
Water Loss			
Additives			
Expected Cement Top			

Logging Date			
Run Number			
Depth Driller			
Schlumberger Depth			
Bottom Log Interval			
Top Log Interval			
Casing Fluid Type			
Salinity			
Density			
Fluid Level			
BIT/CASING/TUBING STRING			
Bit Size			
From			
To			
Casing/Tubing Size			
Weight			
Grade			
From			
To			
Maximum Recorded Temperatures			
Logger On Bottom			
Unit Number			
Recorded By			
Witnessed By			

Date Created: 24-SEP-2007 0:36:32

## Logging Cable

Type:	7-46ZV-XS
Serial Number:	76371
Length:	5779.92 M
Conveyance Method:	Wireline
Rig Type:	Offshore Fixed

Log Sequence:	First Log In the Well
Rig Up Length At Surface:	50.40 M
Rig Up Length At Bottom:	50.40 M
Rig Up Length Correction:	0.00 M
Stretch Correction:	0.00 M
Tool Zero Check At Surface:	0.00 M

1. Used IDW as primary depth control
2. Used Z-Chart as secondary depth control
3. Found HUD at 3003m MDKB
- 4.
- 5.
- 6.

THE USE OF AND RELIANCE UPON THIS RECORDED-DATA BY THE HEREIN NAMED COMPANY (AND ANY OF ITS AFFILIATES, PARTNERS, REPRESENTATIVES, AGENTS, CONSULTANTS AND EMPLOYEES) IS SUBJECT TO THE TERMS AND CONDITIONS AGREED UPON BETWEEN SCHLUMBERGER AND THE COMPANY, INCLUDING: (a) RESTRICTIONS ON USE OF THE RECORDED-DATA; (b) DISCLAIMERS AND WAIVERS OF WARRANTIES AND REPRESENTATIONS REGARDING COMPANY'S USE OF AND RELIANCE UPON THE RECORDED-DATA; AND (c) CUSTOMER'S FULL AND SOLE RESPONSIBILITY FOR ANY INFERENCE DRAWN OR DECISION MADE IN CONNECTION WITH THE USE OF THIS RECORDED-DATA.

OS5:

REMARKS: RUN NUMBER 2

Rig up wireline and RIH to HUD with toolstring incorporating CCL / Junk Basket and 6" gauge ring, POOH.



RIH with toolstring incorporating GB/CCI CPST-AA MAX-R assembly and a 4.5" HSD

Run with toolstring incorporating SERVICE, CT CT 700, Max-R assembly and a 4.5' HOB					
gun loaded with 2.5m of PowerJet Omega charges, Correlate Max-R on depth and set.					
POOH, rig down.					
Perforation interval = 2984.5 – 2987.0m MDKB.					
Five Junk Basket runs were conducted on this well in attempts to reach the					
required depth, the hold up depths are as follows = Run 1 = 22.5m MDKB,					
Run 2 672m MDKB, Run 3 2987.5m MDKB, Run 4 2987.5m MDKB, Run 5 3005.5m MDKB.					
Schlumberger Crew:					
Operators = Luke Dooley and Cragie Harris (Days)					
Rick Murray and Zeb Caey (Nights)					
Specialist = Owen Darby					

RUN 1			RUN 2		
SERVICE ORDER #: PROGRAM VERSION: FLUID LEVEL:			SERVICE ORDER #: PROGRAM VERSION: FLUID LEVEL:		
L0501H1009 15C0-309					
LOGGED INTERVAL	START	STOP	LOGGED INTERVAL	START	STOP

EQUIPMENT DESCRIPTION					
RUN 1			RUN 2		

SURFACE EQUIPMENT			SURFACE EQUIPMENT		
			WITM (SHM)		

DOWNHOLE EQUIPMENT			DOWNHOLE EQUIPMENT		
PEH-A PEH-A 11  AH-64 AH-64 8001  PGGT-D PGGC 229 PGGH-D 229  Gamma Ray  Casing Co Tension		4.91  4.36  3.95  1.07  TOOL ZERO	PEH-A PEH-A 11  AH-64 AH-64 8001  PGGT-D PGGC 229 PGGH-D 229  Gamma Ray  Casing Co Tension  AH-283 AH-CPST-AA AH-CPST-AA  AH-Max-R AH-Max-R  SHM GUN		13.77  13.23  12.82  11.04 10.87  8.92  6.17

AH-283  
AH-283 5002

AH-Junk Basket  
AH-Junk Basket

AH-6" Gauge Ring

TOOL BOTTOM

2.17

2.01

0.05

MAXIMUM STRING DIAMETER 6.00 IN  
MEASUREMENTS RELATIVE TO TOOL ZERO  
ALL LENGTHS IN METERS

GUN-4 1/2" HSD Gun

AH-Bottom Nose

TOOL BOTTOM

0.08

MAXIMUM STRING DIAMETER 7.00 IN  
MEASUREMENTS RELATIVE TO TOOL ZERO  
ALL LENGTHS IN METERS

Client: Esso Australia Pty Ltd.

Well: FTA A17a

Field: Bass Strait

State: Victoria

Country: Australia

Rig Name: 175

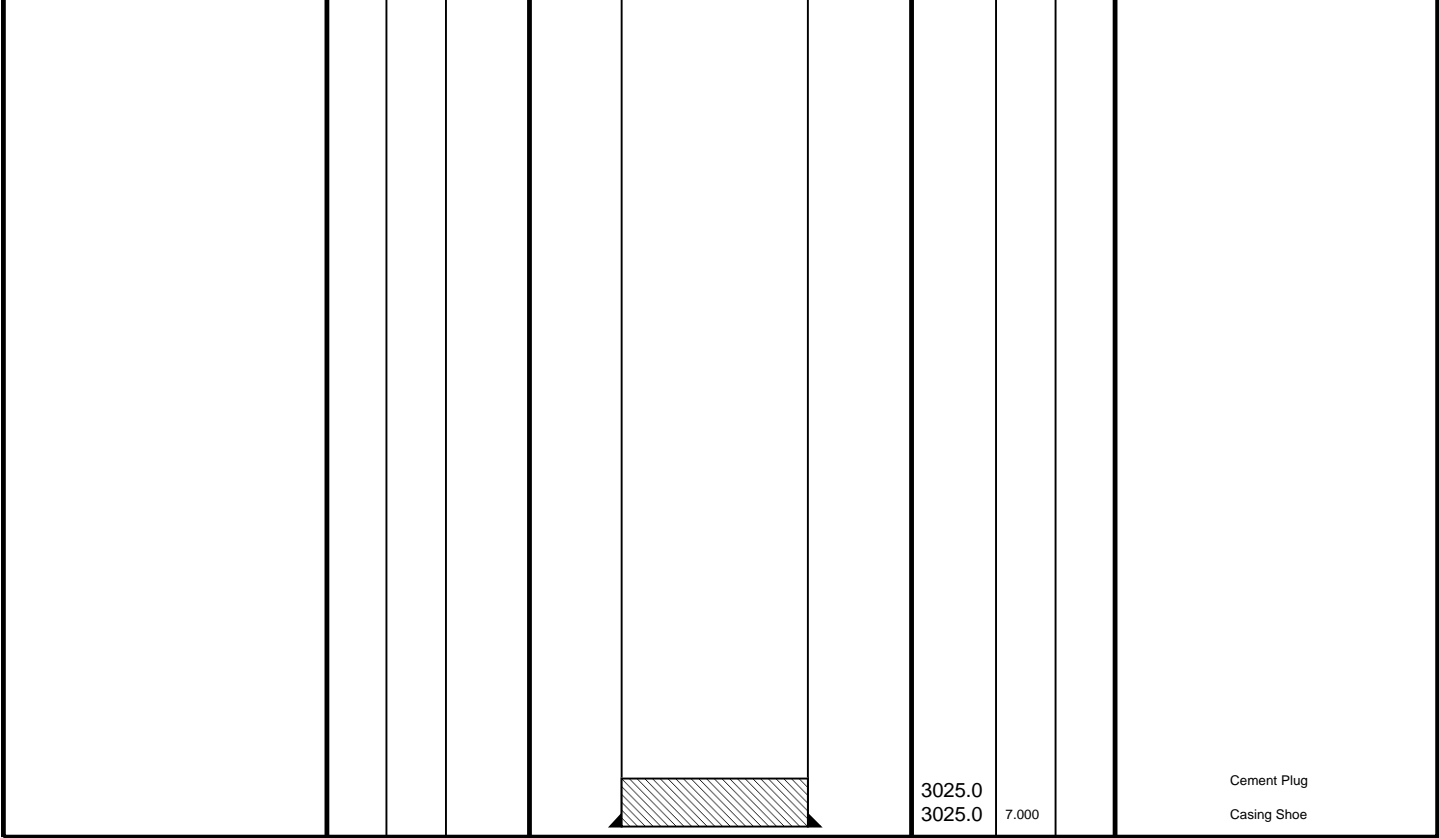
Reference Datum: Mean Sea Level

Elevation: 42.5 m

Drawing Date: 9/20/2007

API #:

Production String	(in)		(m)		Well Schematic				(m)		(in)		Casing String
	OD	ID	MD						MD	OD	ID		
									0.0	7.000			Casing String
										10.750			Surface Casing String
									656.0	10.750			



# Job Events Summary

MAXIS Field Log

## Schlumberger Job Event Summary

Time	Elapsed Time	Depth (M)	File
Simulated Log	19-Sep-2007 19:11	000:07	PERFO_004LUP
OP checked toolstring			
Rig Up Started	21-Sep-2007 2:15		
Log Pass (down)	21-Sep-2007 2:24	001:50	5.2 – 21.6 PERFO_009LDP
Junk basket run 1			
Log Pass (down)	21-Sep-2007 18:18	000:37	–29.4 – 682.3 PERFO_010LDP
Junk basket run 2			
Log Pass (down)	22-Sep-2007 22:29	000:54	–0.9 – 2995.4 PERFO_013LDP
Junk basket run 3			
Log Pass (down)	22-Sep-2007 23:51	000:02	2934.9 – 3001.2 PERFO_018LDP
Junk basket run 4			
Log Pass (up)	24-Sep-2007 0:23	000:06	3008.8 – 2917.1 PERFO_041LUP
Junk basket run 5			
Simulated Log	24-Sep-2007 1:12	000:06	PERFO_042LUP

Simulated Log  
Hot check for Max-R  
Log Pass (down) 24-Sep-2007 2:27 000:54 475.6 - 2976.7 PERFO\_046LDP  
RIH with Max-R  
Log Pass (up) 24-Sep-2007 3:36 000:07 2982.2 - 2904.9 PERFO\_052LUP  
Correlation for Max-R  
Log Pass (up) 24-Sep-2007 3:43 000:19 2981.9 - 2868.6 PERFO\_053LUP  
Max-R Setting pass  
Rig Down Completed 24-Sep-2007 5:00

Schlumberger

## Max-R Setting Pass

MAXIS Field Log

### PERFO2 Operational Summary Listing

Device Status Req Depth ( M) Obs Depth ( M) Time Used

GUN1 Used 2984.5 2984.5 Mon Sep 24 03:51:26 2007

Company: Esso Australia Pty Ltd.

Well: FTA A17a

### Output DLIS Files

DEFAULT PERFO\_053LUP FN:52 PRODUCER 24-Sep-2007 03:43

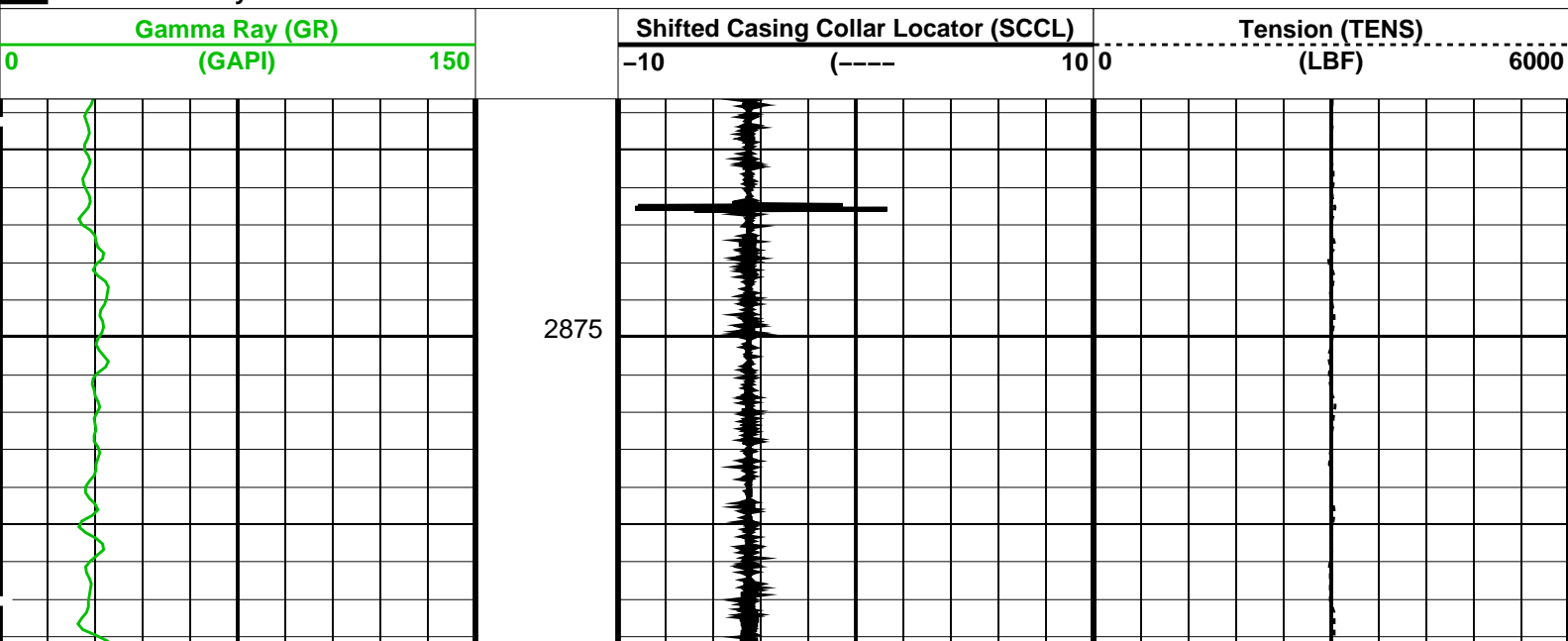
### OP System Version: 15C0-309

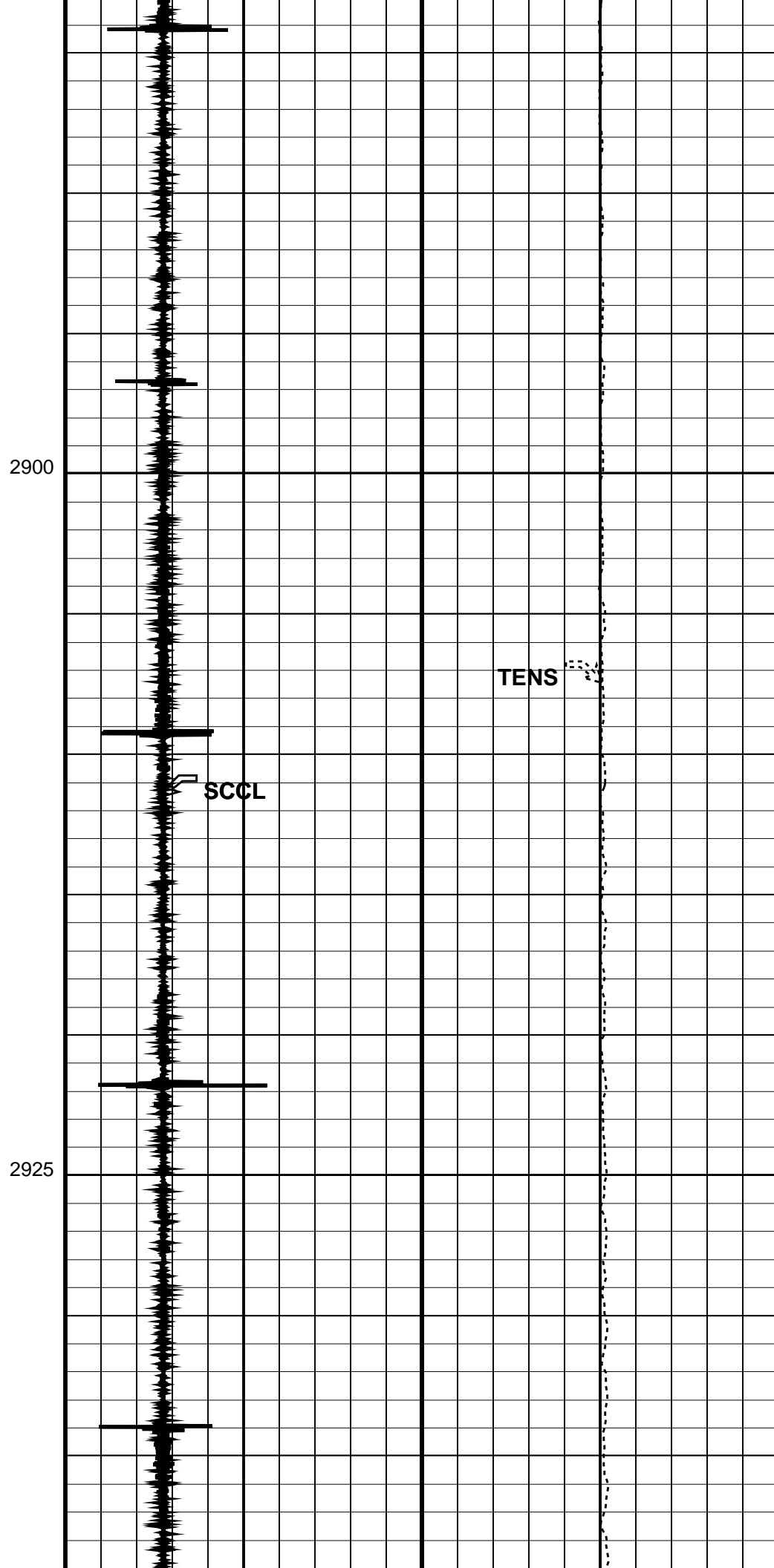
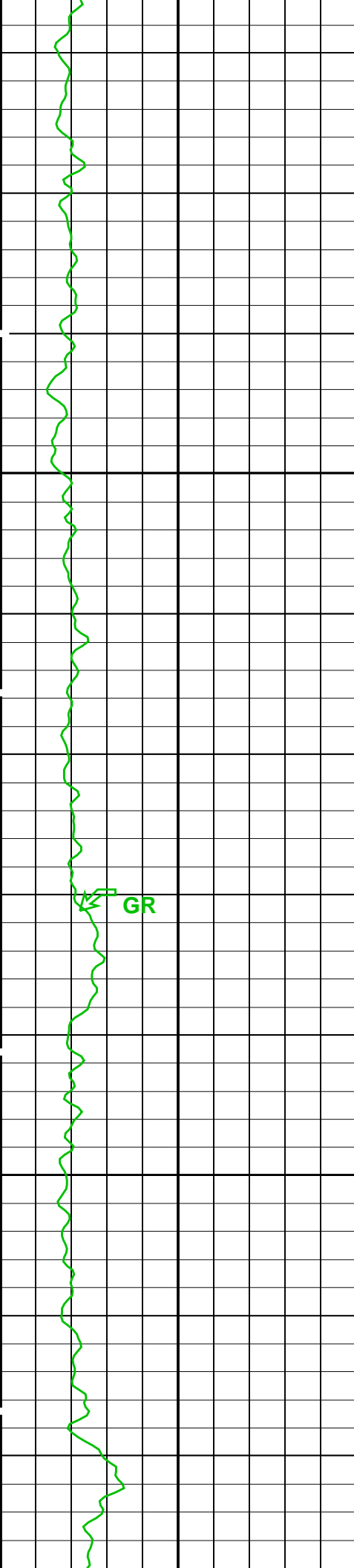
MCM

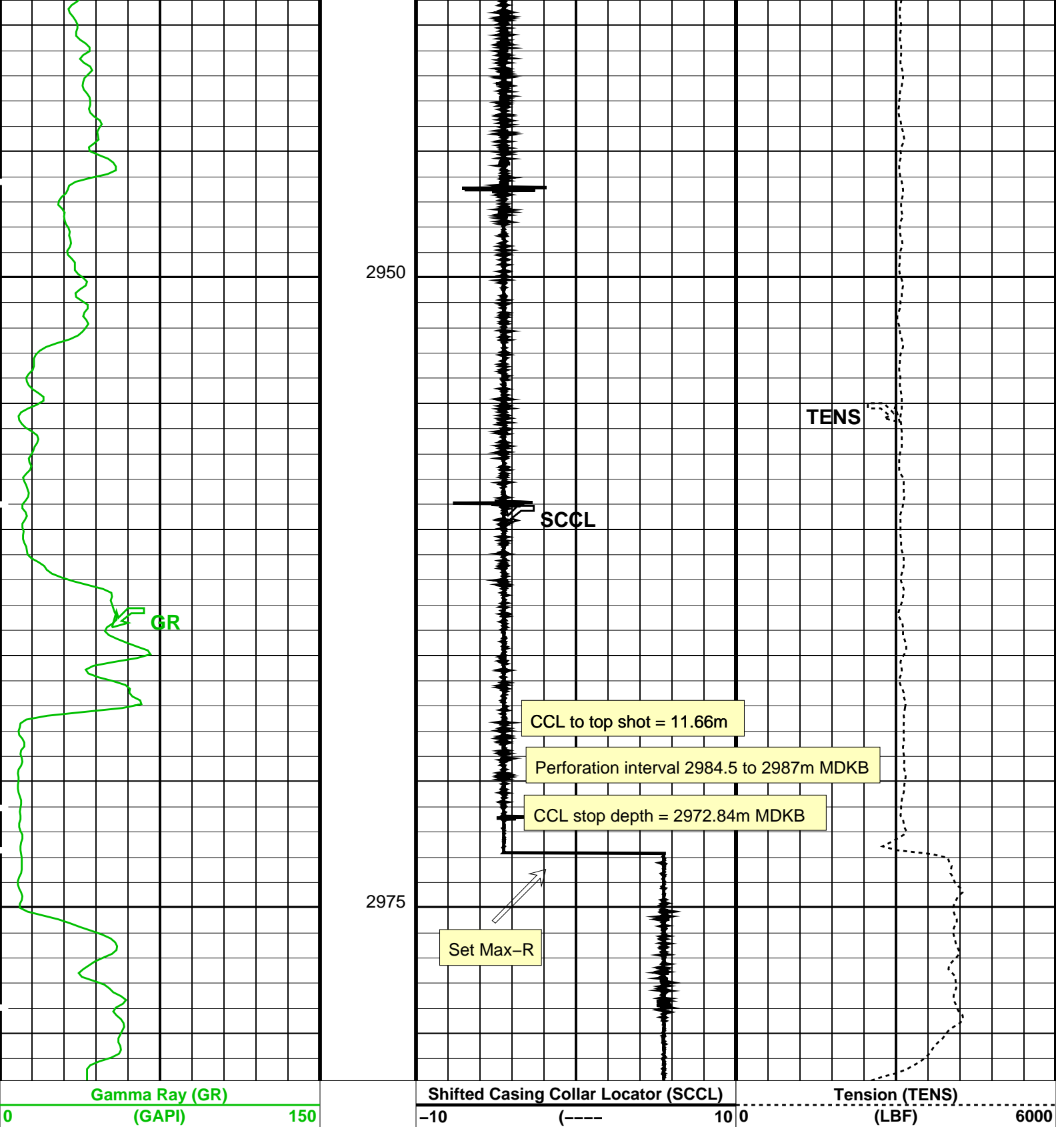
SHM\_GUN 15C0-309 PGGT-D 15C0-309

### PIP SUMMARY

Time Mark Every 60 S







Time Mark Every 60 S

Format: PERFO\_2 Vertical Scale: 1:200

Graphics File Created: 24-Sep-2007 03:43

OP System Version: 15C0-309  
MCM

SHM\_GUN 15C0-309

PGGT-D

15C0-309

Output DLIS Files

DEFAULT PERFO\_053LUP

FN:52 PRODUCER 24-Sep-2007 03:43





# Max-R Correlation Pass

MAXIS Field Log

Company: Esso Australia Pty Ltd.

Well: FTA A17a

## Output DLIS Files

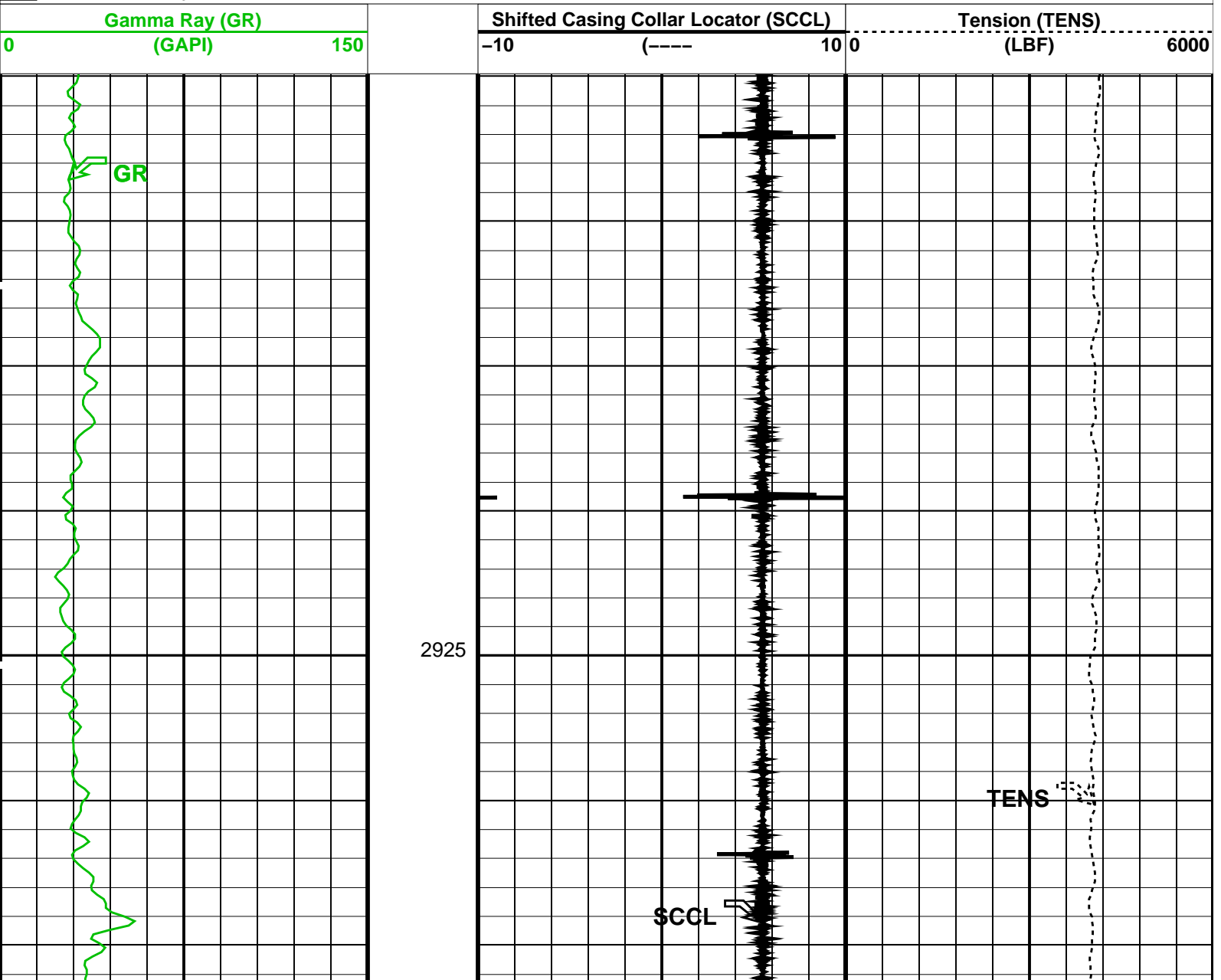
DEFAULT PERFO\_052LUP FN:51 PRODUCER 24-Sep-2007 03:36

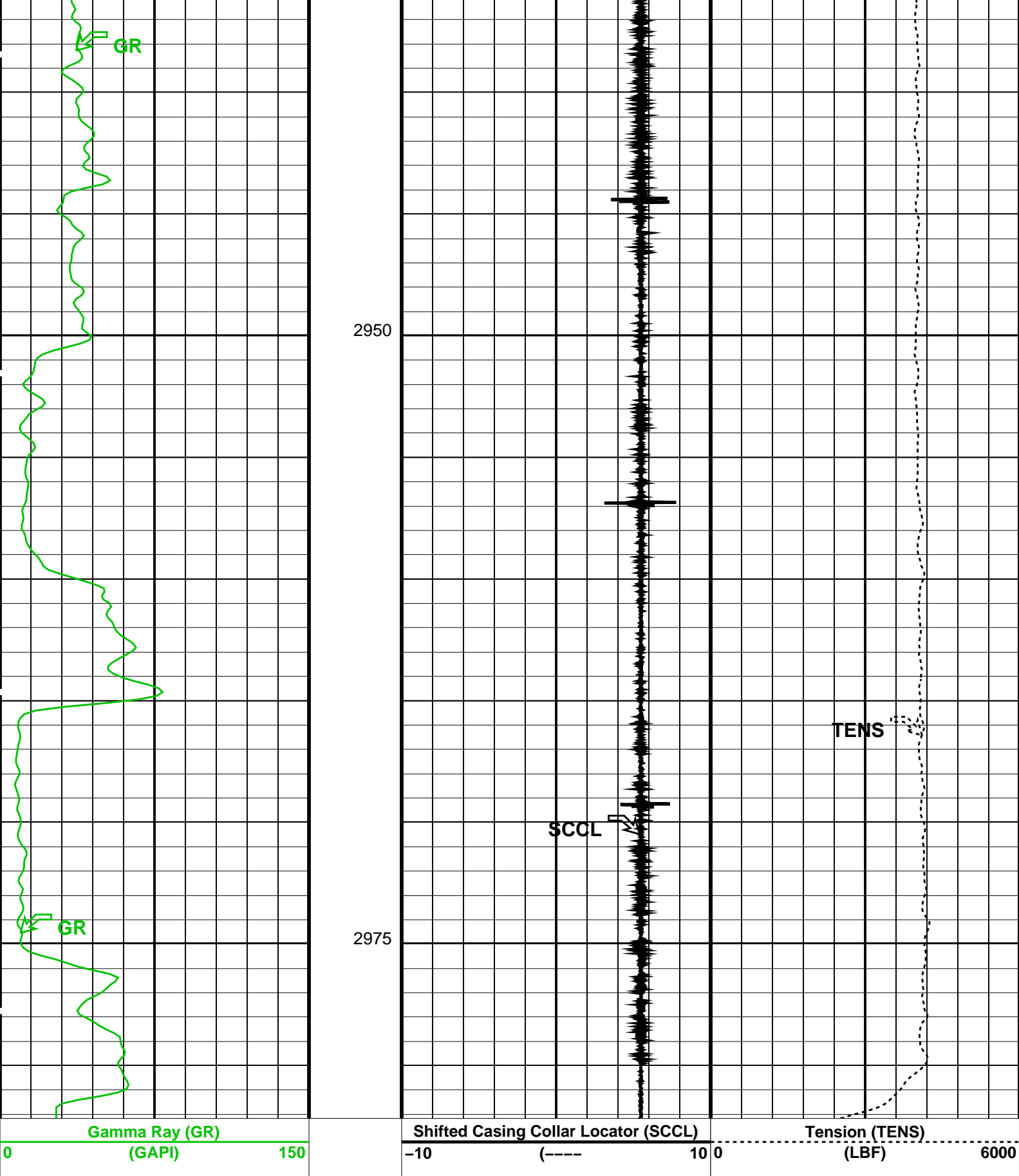
OP System Version: 15C0-309  
MCM

SHM\_GUN 15C0-309 PGGT-D 15C0-309

## PIP SUMMARY

Time Mark Every 60 S





# Output DLIS Files

DEFAULT

PERFO\_052LUP

FN:51

PRODUCER

24-Sep-2007 03:36

**Schlumberger**

## Junk Basket Correlation Pass

MAXIS Field Log

Company: Esso Australia Pty Ltd.

Well: FTA A17a

# Output DLIS Files

DEFAULT

PERFO\_041LUP

FN:40

PRODUCER

24-Sep-2007 00:23

3008.8 M

2917.1 M

**OP System Version: 15C0-309**  
MCM

SHM\_GUN

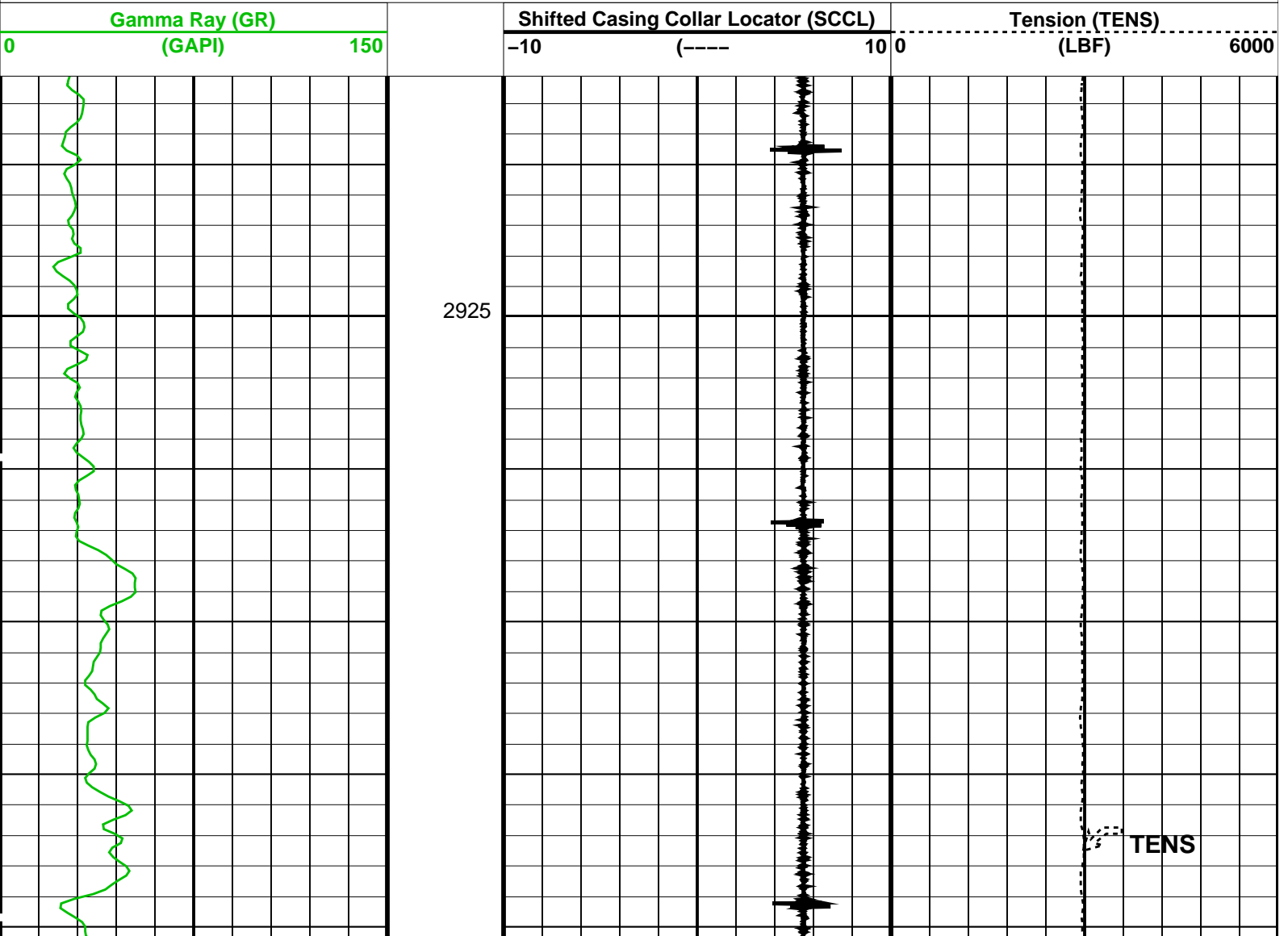
15C0-309

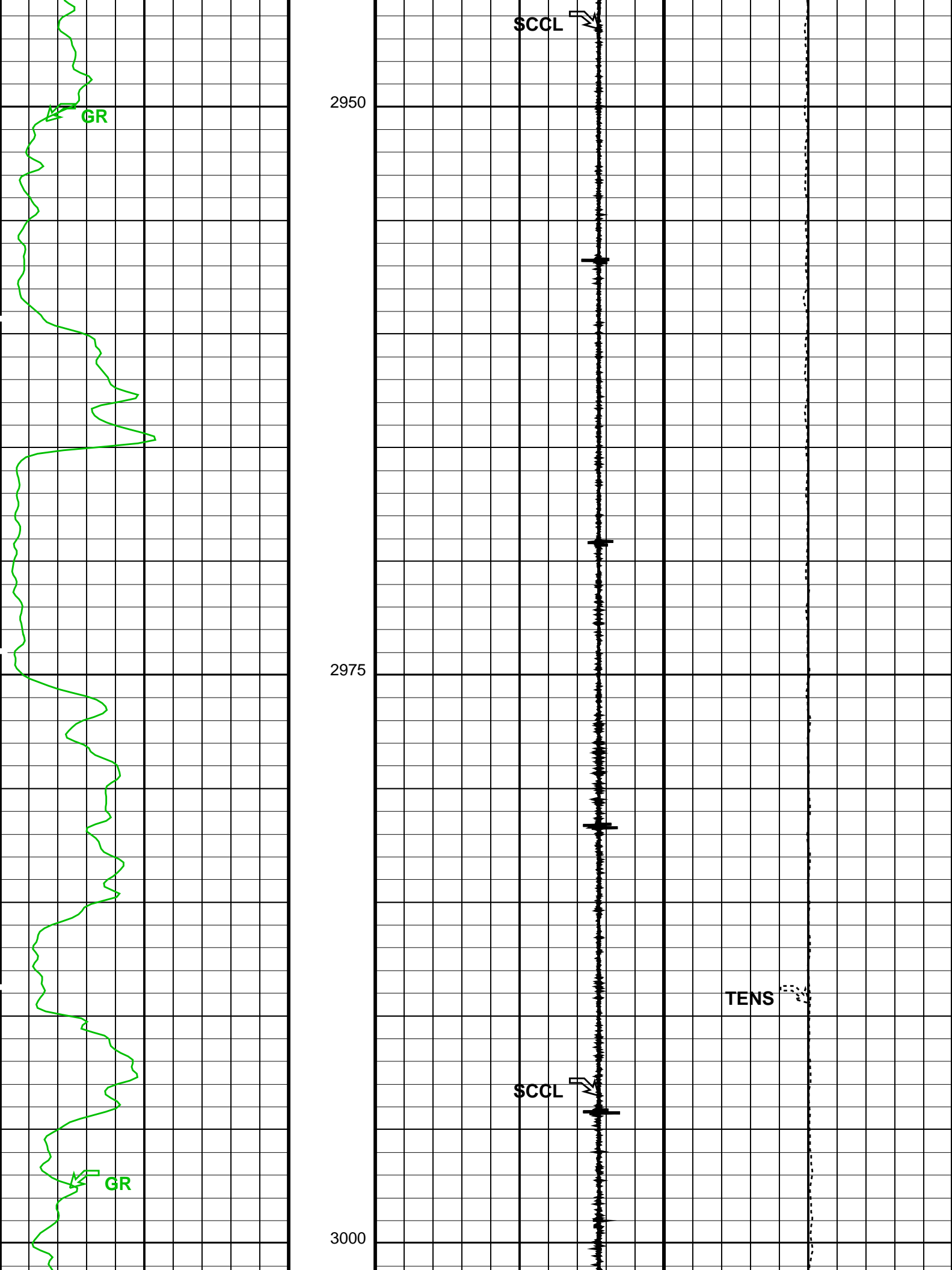
PGGT-D

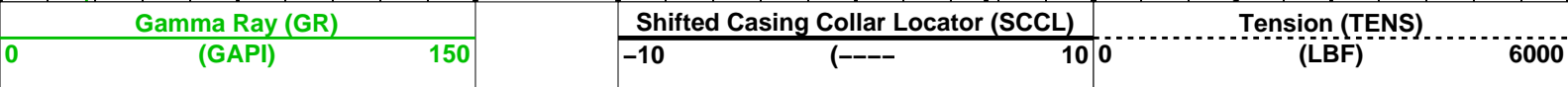
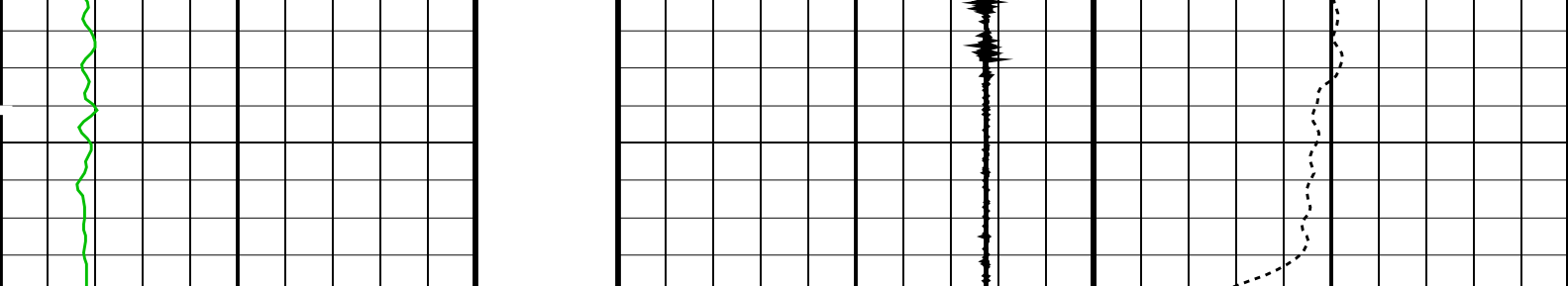
15C0-309

## PIP SUMMARY

Time Mark Every 60 S







PIP SUMMARY

Time Mark Every 60 S

Format: PERFO\_2 Vertical Scale: 1:200

Graphics File Created: 24-Sep-2007 00:23

OP System Version: 15C0-309

MCM

SHM_GUN	15C0-309	PGGT-D	15C0-309
---------	----------	--------	----------

Output DLIS Files

DEFAULT	PERFO_041LUP	FN:40	PRODUCER	24-Sep-2007 00:23
---------	--------------	-------	----------	-------------------

Company: **Esso Australia Pty Ltd.**

**Schlumberger**

Well: **FTA A17a**  
Field: **Bass Strait**  
Rig: **175**  
Country: **Australia**

Junk Basket with 6" Gauge Ring  
Max-R Setting Record