



Company: Esso Australia Pty Ltd.

Well: B-13  
Field: Bream B  
Rig : Prod4

Country: Australia

Prod4  
Bream B  
Gippsland  
B-13  
Esso Australia Pty Ltd.

2 1/8"Phased Powerjet MWPT Perforation 7"HPI PSP Plug		LOCATION		
		Gippsland	Elev.: K.B.	
		Basin	G.L. -61 m	
		Bass Strait	D.F. 47.1 m	
		Permanent Datum: _____	M.S.L. _____	
Log Measured From: _____	D.F. _____	Elev.: 0 m	47.1 m	above Perm. Datum
Drilling Measured From: _____	D.F. _____			
State: Victoria	Max. Well Deviation 41 deg	Longitude 147 50'16.81"E	Latitude 038 31'10.90"S	
Logging Date	22-Aug-2007			
Run Number	1 thru 3			
Depth Driller	2395 m			
Schlumberger Depth	2383 m			
Bottom Log Interval	2383 m			
Top Log Interval	2350 m			
Casing Fluid Type	Production Fluids			
Salinity				
Density				
Fluid Level	1915 m			
BIT/CASING/TUBING STRING				
Bit Size	8.500 in			
From				
To				
Casing/Tubing Size	7.000 in			
Weight	26 lbn/ft			
Grade	LT&C			
From	20.95 m			
To	2557.66 m			
Maximum Recorded Temperatures	214 degf			
Logger On Bottom	22-Aug-2007		14:00	
Unit Number	889	Prod4 / Ausl		
Recorded By	G Wright.			
Witnessed By	G Rimmer.			

PVT DATA				Run 1
Oil Density				
Water Salinity				
Gas Gravity				
Bo				
Bw				
1/Bg				
Bubble Point Pressure				
Bubble Point Temperature				
Solution GOR				
Maximum Deviation				41 deg
CEMENTING DATA				
Primary/Squeeze				Primary
Casing String No				
Lead Cement Type				
Volume				
Density				
Water Loss				
Additives				
Tail Cement Type				
Volume				
Density				
Water Loss				
Additives				
Expected Cement Top				
Logging Date				
Run Number				
Depth Driller				
Schlumberger Depth				
Bottom Log Interval				
Top Log Interval				
Casing Fluid Type				
Salinity				
Density				
Fluid Level				
BIT/CASING/TUBING STRING				
Bit Size				
From				
To				
Casing/Tubing Size				
Weight				
Grade				
From				
To				
Maximum Recorded Temperatures				
Logger On Bottom				
Unit Number				
Recorded By				
Witnessed By				

## DEPTH SUMMARY LISTING

Date Created: 22-AUG-2007 10:36:15

### Depth System Equipment

Depth Measuring Device	Tension Device	Logging Cable
Type: IDW-EB Serial Number: 6373 Calibration Date: 04-Jan-2007 Calibrator Serial Number: 9 Calibration Cable Type: 2-32ZT Wheel Correction 1: -2 Wheel Correction 2: -4	Type: PSDS/OSDS Serial Number: 325357 Calibration Date: 24-July-2007 Calibrator Serial Number: 1174 Calibration Gain: 0.92 Calibration Offset: 199.00	Type: 2-32ZT Serial Number: 24425 Length: 6289.85 M Conveyance Method: Wireline Rig Type: Offshore_Fixed

### Depth Control Parameters

Log Sequence:	Subsequent Log In the Well
Reference Log Name:	ExxonMobil Solar composite.
Reference Log Run Number:	
Reference Log Date:	

### Depth Control Remarks

1. IDW used as primary depth control. 2. Z-chart used as secondary back-up.
--

#### DISCLAIMER

THE USE OF AND RELIANCE UPON THIS RECORDED-DATA BY THE HEREIN NAMED COMPANY (AND ANY OF ITS AFFILIATES, PARTNERS, REPRESENTATIVES, AGENTS, CONSULTANTS AND EMPLOYEES) IS SUBJECT TO THE TERMS AND CONDITIONS AGREED UPON BETWEEN SCHLUMBERGER AND THE COMPANY, INCLUDING: (a) RESTRICTIONS ON USE OF THE RECORDED-DATA; (b) DISCLAIMERS AND WAIVERS OF WARRANTIES AND REPRESENTATIONS REGARDING COMPANY'S USE OF AND RELIANCE UPON THE RECORDED-DATA; AND (c) CUSTOMER'S FULL AND SOLE RESPONSIBILITY FOR ANY INFERENCE DRAWN OR DECISION MADE IN CONNECTION WITH THE USE OF THIS RECORDED-DATA.

OTHER SERVICES1 OS1: None
------------------------------














REMARKS: RUN NUMBER 1
Log correlated to ExxonMobil composite supplied with program.
Maximum well deviation 41 degrees at 2055.1m MDKB.
Run one was a perforation over the interval 2374.9m to 2378.8m MDKB.
2 1/8" 45 degree Phased Powerjet at 6spf used for this perforation.
Run two the 2.125" Dummy plug was run to HUD @ 2183m MDKB.
Run three the 7" HPI PSP plug was set at 2381m MDKB.
SBHP = 2530 psia.
SBHT = 214 degF.

SBHT = 214 degf.

Crew : Jake Annear & John Light.

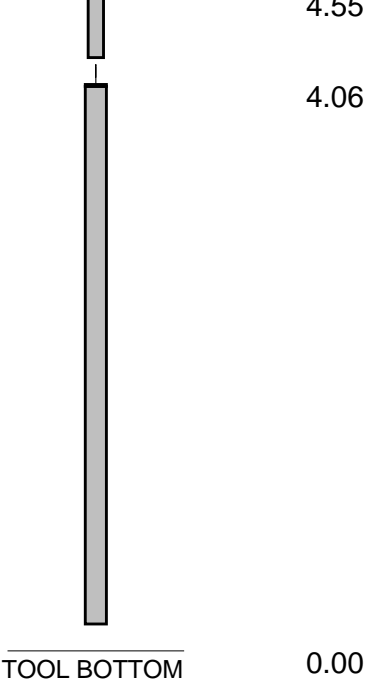
RUN 1			RUN 2		
SERVICE ORDER #:		AusI07484955			
PROGRAM VERSION:		14C0-302			
FLUID LEVEL:		1915 m			
LOGGED INTERVAL	START	STOP	LOGGED INTERVAL	START	STOP

EQUIPMENT DESCRIPTION

RUN 1			RUN 2		
SURFACE EQUIPMENT			SURFACE EQUIPMENT		
MWPM-AA 3008			MWPM-AA 3008		
DOWNHOLE EQUIPMENT			DOWNHOLE EQUIPMENT		
SWBS-B 731		11.37	AH-SWBS-B 731		7.63
SWBS-B 762		10.68			
SWHS-A 726		9.99	AH-SWBS-B 762		6.95
MWPG-AA 24 MWGH-AA 24	MWPG GR  2.41	9.66	MH-SWHS-A 726		6.26
MWPH-AA 74 MWPS-AA 74		8.69	MWPG-AA 24 MWGH-AA 24	MWPG GR  2.41	5.93
	CCL SMWP Pres SMWP Temp Tension TOOL ZERO				
SAH-G 1035		5.87	MWPH-AA 74 MWPS-AA 74		4.95
MPD-MB 268		5.44			
Flex 42		4.98			
		4.55		CCL SMWP Pres SMWP Temp Tension TOOL ZERO	

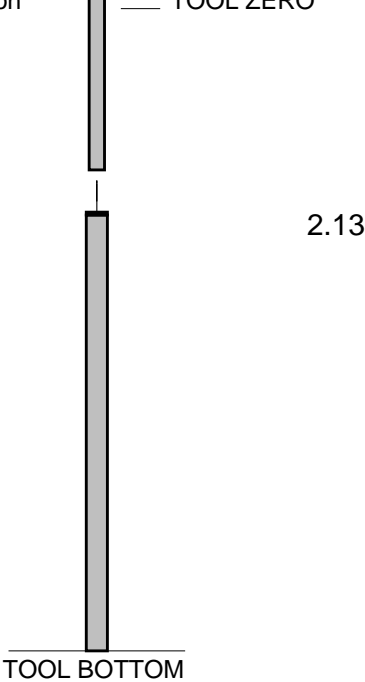
ESIC 15042003

3.9 mtr Powerjet Gun 1



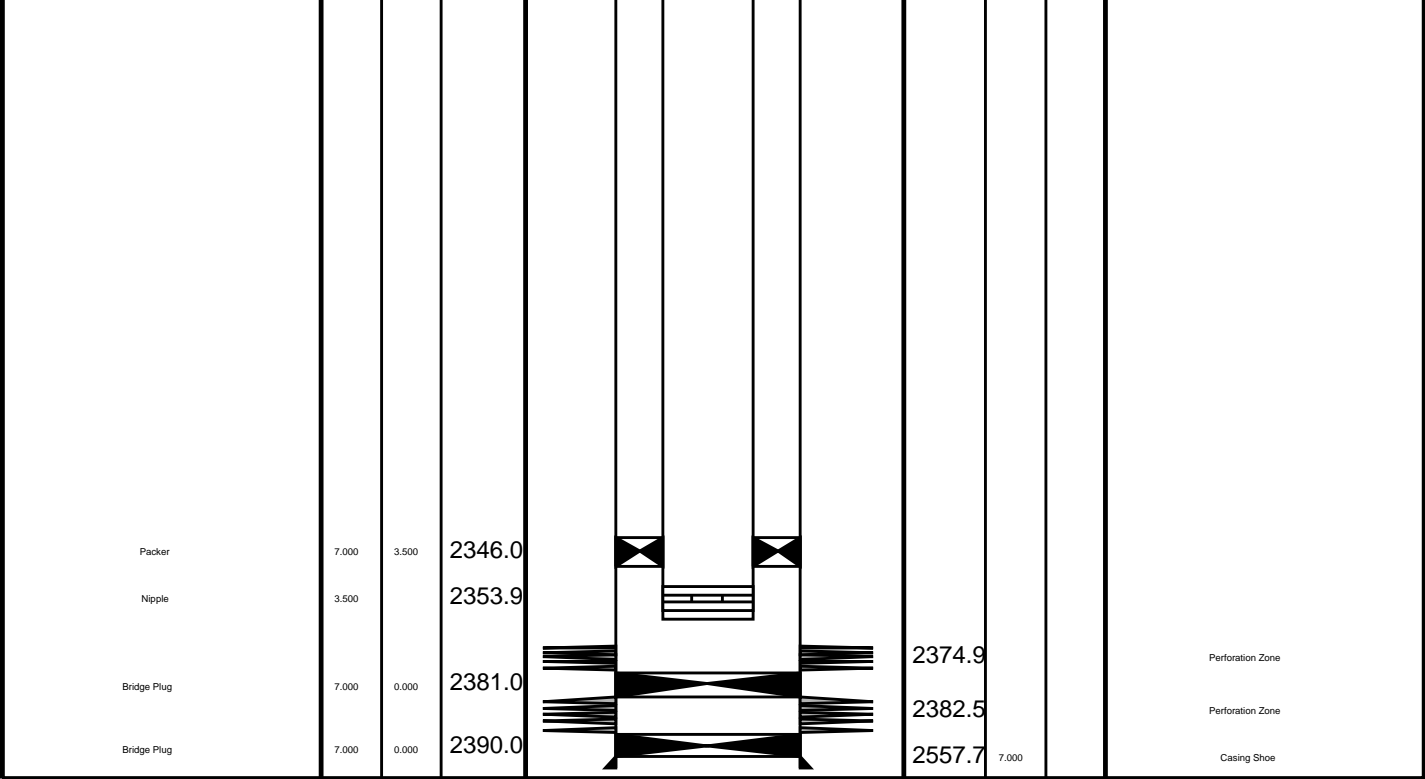
MAXIMUM STRING DIAMETER 2.13 IN  
MEASUREMENTS RELATIVE TO TOOL ZERO  
ALL LENGTHS IN METERS

2.13" Dummy Plug



MAXIMUM STRING DIAMETER 2.13 IN  
MEASUREMENTS RELATIVE TO TOOL ZERO  
ALL LENGTHS IN METERS

Production String	(m)		(m)	Well Schematic	(m)			Casing String
	OD	ID			MD	OD	ID	
Tubing Hanger	7.000	3.500	20.0		12.1	7.000		Casing String
					20.6	10.750	7.000	Liner Hanger
Shut-in Valve	3.500		452.0					
Gas Lift Mandrel	3.500		546.0					
Gas Lift Mandrel	3.500		843.0		728.4	10.750		Casing Shoe
Gas Lift Mandrel	3.500		1120.0					
Nipple	3.500		1136.6					



## Job Event Summary

MAXIS Field Log

### Schlumberger Job Event Summary

Time	Elapsed Time	Depth (M)	File
Log Pass (down)	22-Aug-2007 12:46	000:00	1036.8 - 1044.9 PERFO_006LDP
Log Pass (down)	22-Aug-2007 12:47	000:09	1093.8 - 2379.0 PERFO_007LDP
Log Pass (up)	22-Aug-2007 12:56	000:03	2379.0 - 2353.1 PERFO_008LUP
Log Pass (up)	22-Aug-2007 13:03	000:07	2378.5 - 2339.2 PERFO_009LUP
Station Log	22-Aug-2007 13:05	000:03	2370.5 - 0.5 PERFO_010LTP
Log Pass (down)	22-Aug-2007 13:50	000:18	98.3 - 2395.1 PERFO_012LDP
Log Pass (up)	22-Aug-2007 14:09	000:04	2395.1 - 2335.8 PERFO_013LUP
Log Pass (up)	22-Aug-2007 14:24	000:01	938.2 - 911.4 PERFO_016LUP
Log Pass (up)	22-Aug-2007 14:31	000:03	50.7 - 4.0 PERFO_017LUP
Simulated Log	22-Aug-2007 14:46	000:10	PERFO_019LUP
Log Pass (down)	23-Aug-2007 8:40	000:27	40.4 - 2378.0 PERFO_021LDP
Log Pass (up)	23-Aug-2007 9:08	000:03	2375.6 - 2353.2 PERFO_022LUP
Log Pass (up)	23-Aug-2007 9:15	000:19	2373.8 - 2332.6 PERFO_023LUP



7" HPI PSP Plug  
Set @ 2381m MDKB

MAXIS Field Log

Output DLIS Files

DEFAULT      PERFO\_023LUP      FN:20    PRODUCER    23-Aug-2007 09:15    2373.8 M    2332.6 M

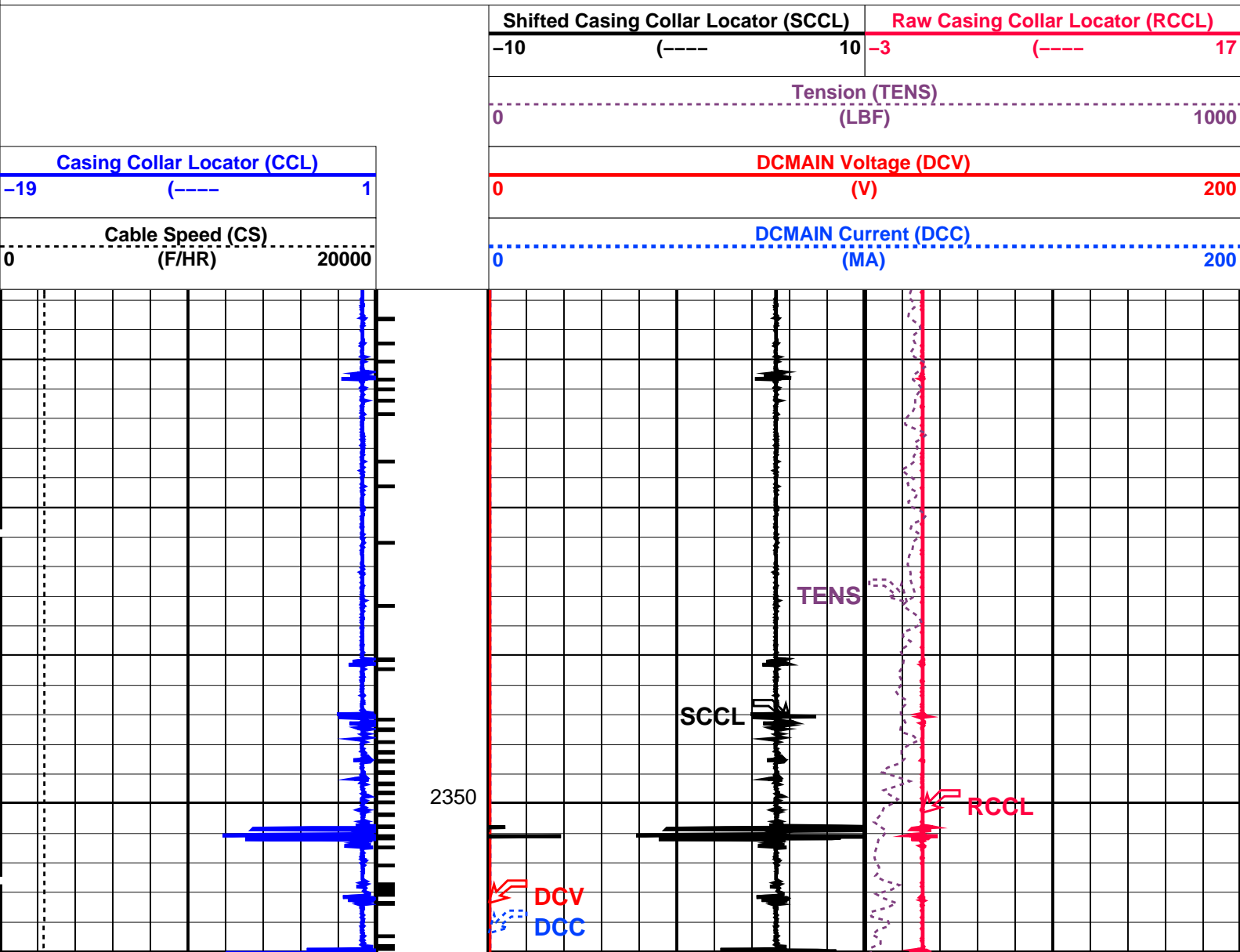
OP System Version: 14C0-302  
MCM

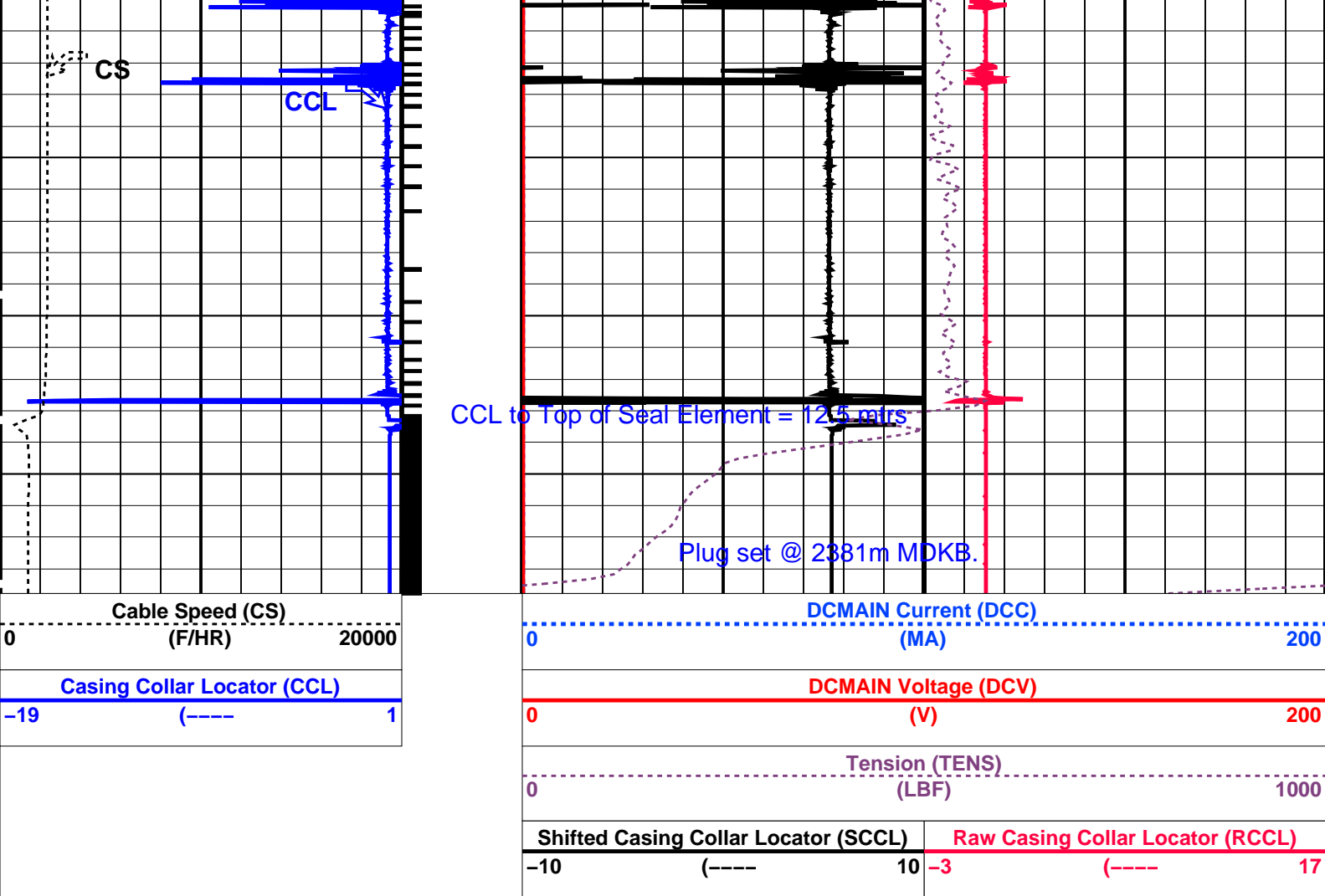
SHM\_GUN      14C0-302      CCL-L      14C0-302

PIP SUMMARY

└─ Casing Collars

Time Mark Every 60 S





#### PIP SUMMARY

Time Mark Every 60 S

Casing Collars

#### Parameters

DLIS Name	Description	Value
CCL-L: Casing Collar Locator		
CCLD	CCL reset delay	12 IN
CCLT	CCL Detection Level	0.3 V

Format: PERFO Vertical Scale: 1:200 Graphics File Created: 23-Aug-2007 09:15

OP System Version: 14C0-302  
MCM

SHM\_GUN 14C0-302 CCL-L 14C0-302

#### Output DLIS Files

DEFAULT PERFO\_023LUP FN:20 PRODUCER 23-Aug-2007 09:15

Schlumberger

7" HPI PSP Plug  
Correlation Pass



# Output DLIS Files

DEFAULT      PERFO\_022LUP      FN:19    PRODUCER    23-Aug-2007 09:08    2375.6 M    2353.2 M

## OP System Version: 14C0-302

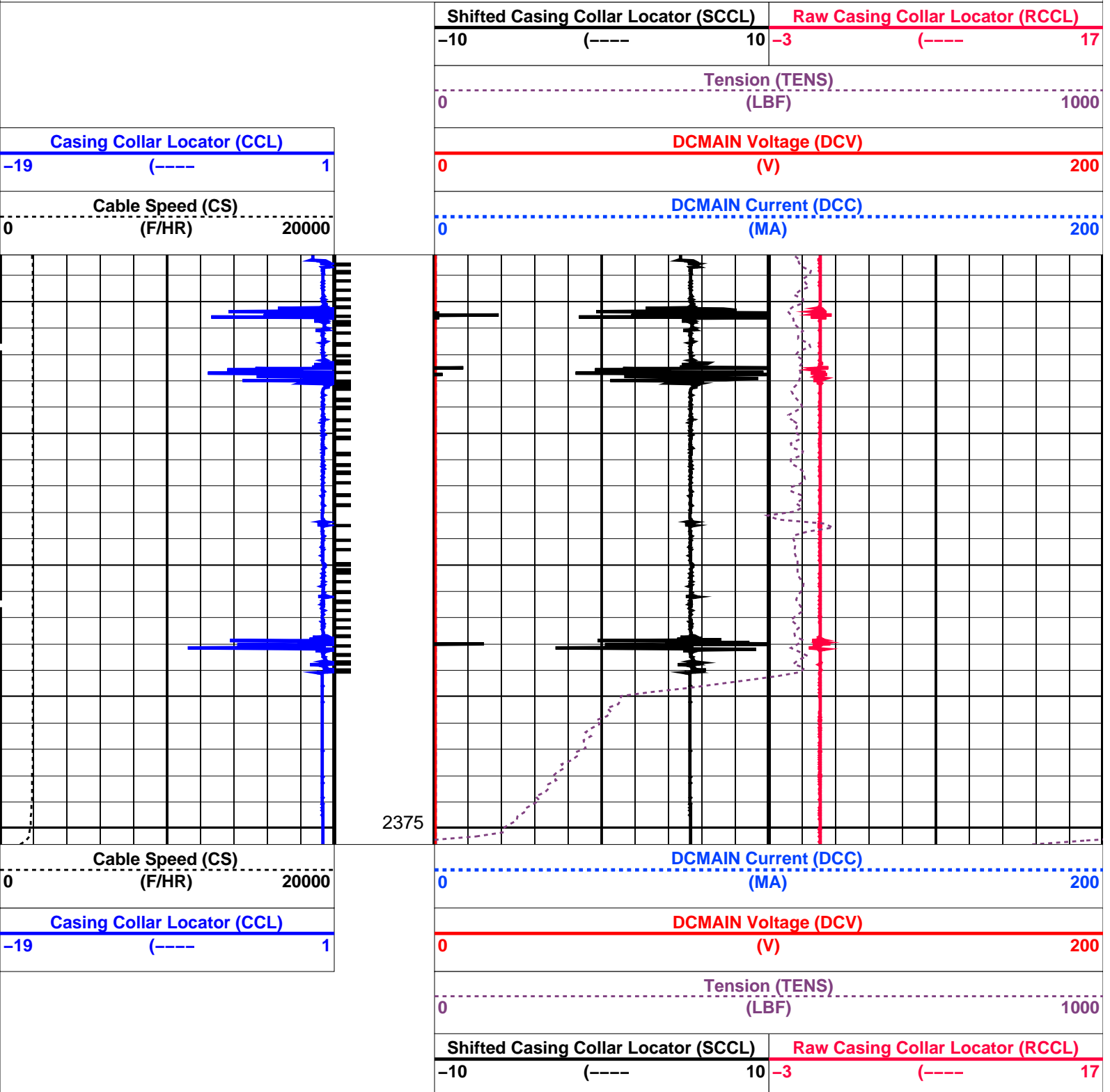
MCM

SHM\_GUN      14C0-302      CCL-L      14C0-302

### PIP SUMMARY

└─ Casing Collars

Time Mark Every 60 S



### PIP SUMMARY

└─ Casing Collars

Time Mark Every 60 S

Time Mark Every 60 S

## Parameters

DLIS Name	Description	Value
CCL-L: Casing Collar Locator		
CCLD	CCL reset delay	12 IN
CCLT	CCL Detection Level	0.3 V

Format: PERFO Vertical Scale: 1:200 Graphics File Created: 23-Aug-2007 09:08

## OP System Version: 14C0-302

MCM

SHM\_GUN 14C0-302 CCL-L 14C0-302

## Output DLIS Files

DEFAULT PERFO\_022LUP FN:19 PRODUCER 23-Aug-2007 09:08

**Schlumberger**

2.13" Dummy Plug Pass

MAXIS Field Log

Company: Esso Australia Pty Ltd. Well: B-13

## Input DLIS Files

DEFAULT PERFO\_013LUP FN:10 PRODUCER 22-Aug-2007 14:09 2395.1 M 2335.8 M

## Output DLIS Files

DEFAULT PERFO\_014PUP FN:11 PRODUCER 22-Aug-2007 14:14 2394.5 M 2335.7 M

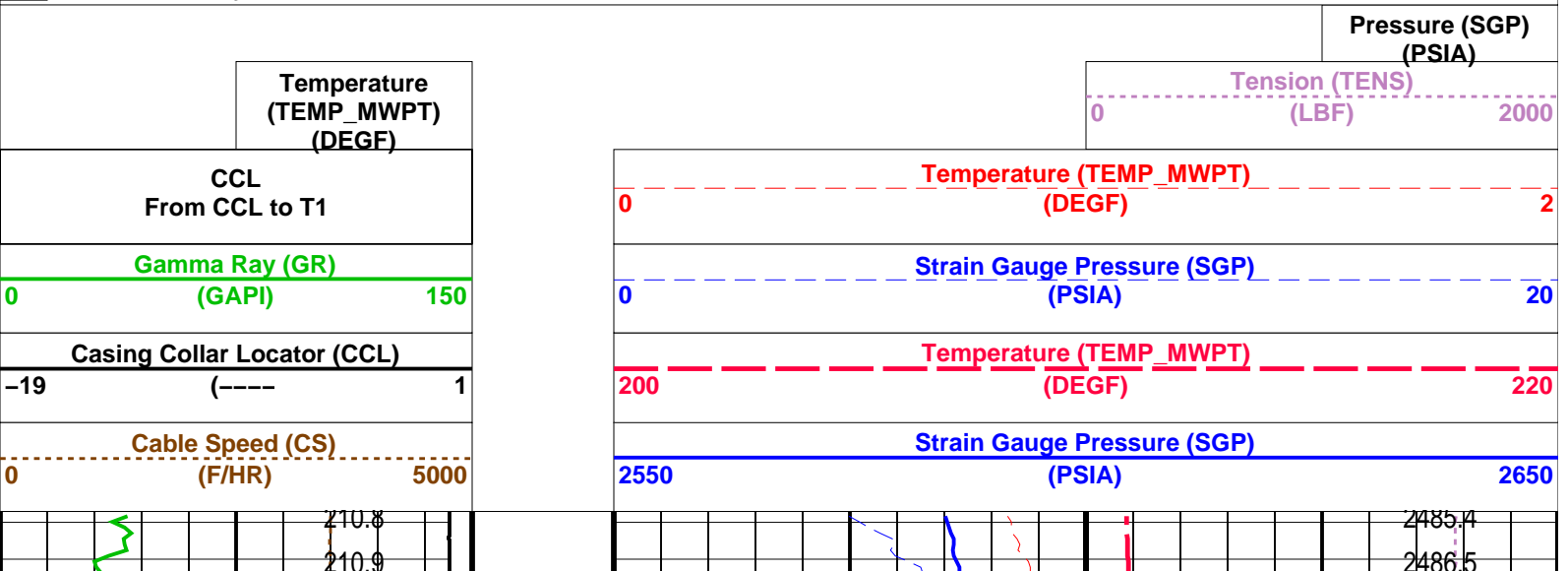
## OP System Version: 14C0-302

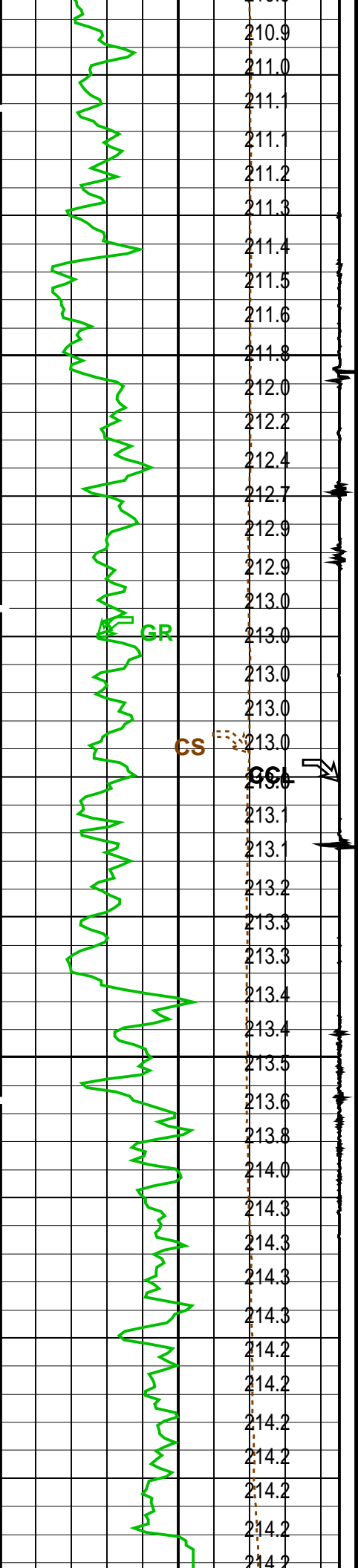
MCM

MWPT-CA 14C0-302 MWGT-AA 14C0-302

## PIP SUMMARY

Time Mark Every 60 S

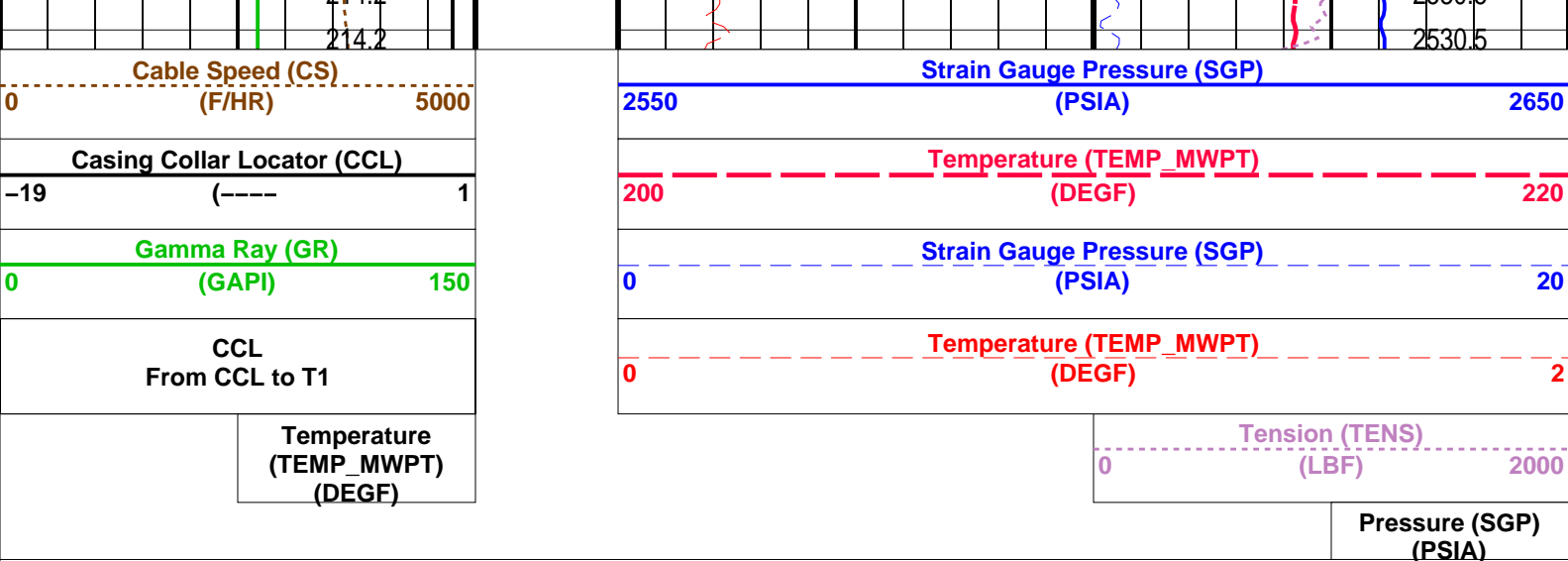




2350

2375





PIP SUMMARY

Time Mark Every 60 S

Parameters		
DLIS Name	Description	Value
MWPT-CA: MEASUREMENT WHILE PERFORATING TOOL		
DEVI_FL_CORR	Deviation Angle for Flow Line Correction	0 DEG
FLD	Flow Line Density	1 G/C3
MWPT_NULL_SOURCE	MWPT NULL Temperature Source	TEMS
MWPT_NULL_TEMP	MWPT NULL Temperature	0.0 DEGC
System and Miscellaneous		
DO	Depth Offset for Playback	-0.6 M
PP	Playback Processing	NORMAL

Format: MWP Vertical Scale: 1:200 Graphics File Created: 22-Aug-2007 14:14

OP System Version: 14C0-302			
MCM			
MWPT-CA	14C0-302	MWGT-AA	14C0-302

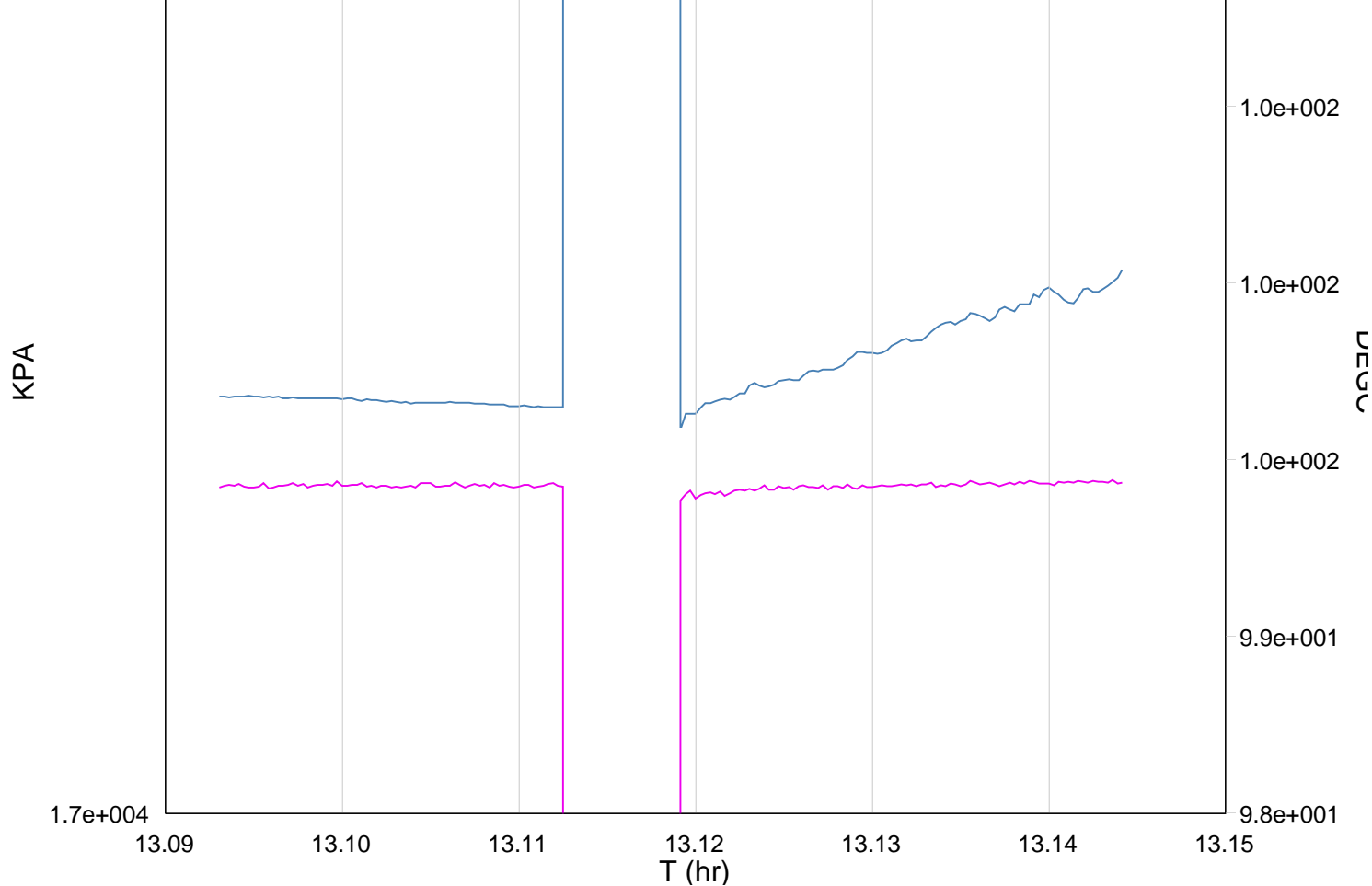
Input DLIS Files					
DEFAULT	PERFO_013LUP	FN:10	PRODUCER	22-Aug-2007 14:09	2395.1 M 2335.8 M
Output DLIS Files					
DEFAULT	PERFO_014PUP	FN:11	PRODUCER	22-Aug-2007 14:14	

GUN # 1

2374.9m to 2378.8m MDKB

MAXIS Field Log





TIME	DEGF	PSIA
1320.0	213.98	2519.701
1310.0	213.64	2519.701
1300.0	213.63	2519.660
1290.0	213.53	2519.628
1280.0	213.30	2519.434
1270.0	213.12	2519.145
1260.0	212.96	2518.585
1250.0	212.84	2519.085
1240.0	212.66	2518.106
1230.0	212.37	2517.148
1220.0	595338.64	-4158212.102
1210.0	595338.64	-4158212.102
1200.0	212.54	2519.225
1190.0	212.57	2519.520
1180.0	212.58	2519.329
1170.0	212.59	2519.516
1160.0	212.63	2520.123
1150.0	212.63	2519.558
1140.0	212.65	2519.657

## Output DLIS Files

OP System Version: 14C0-302

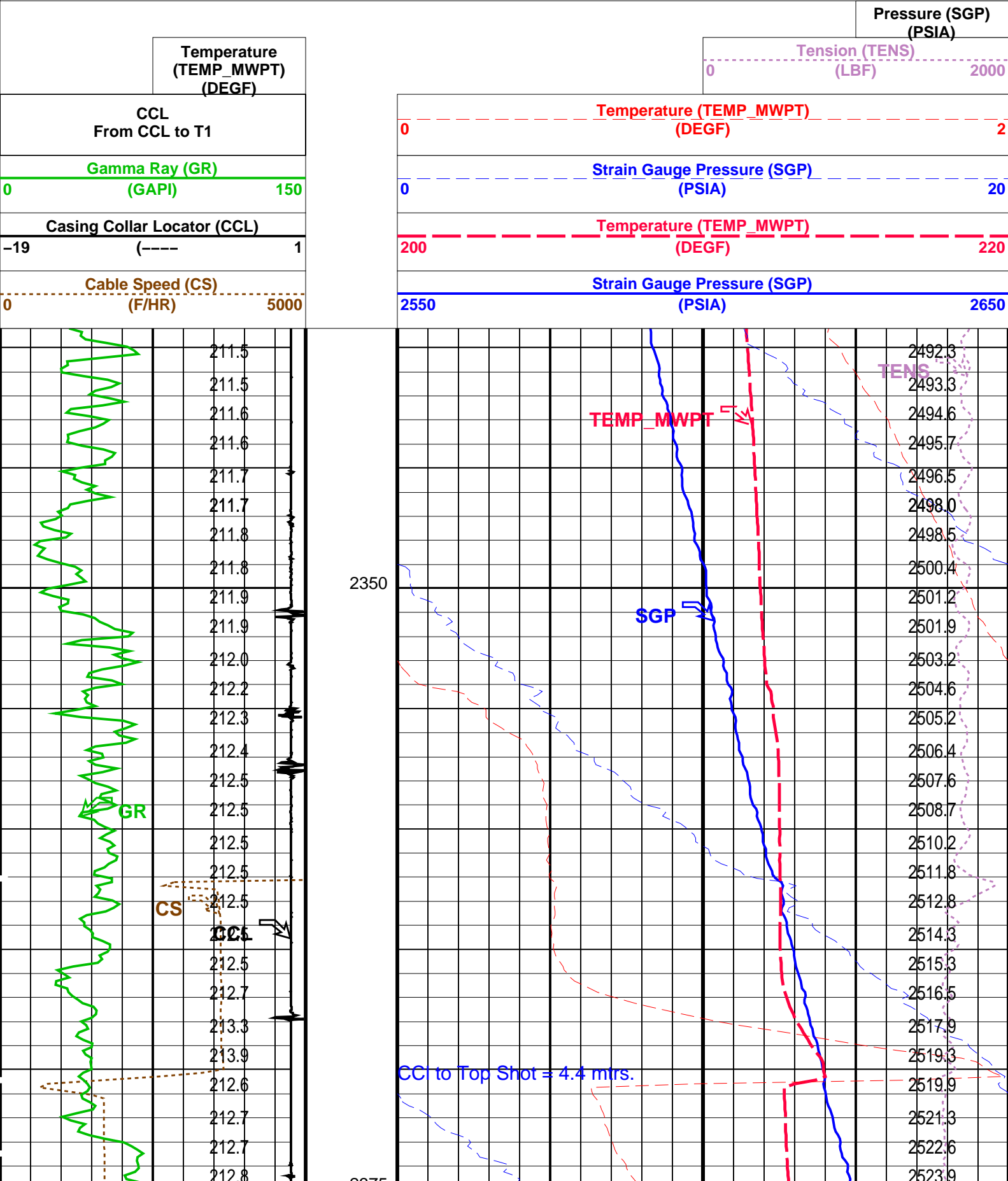
MCM

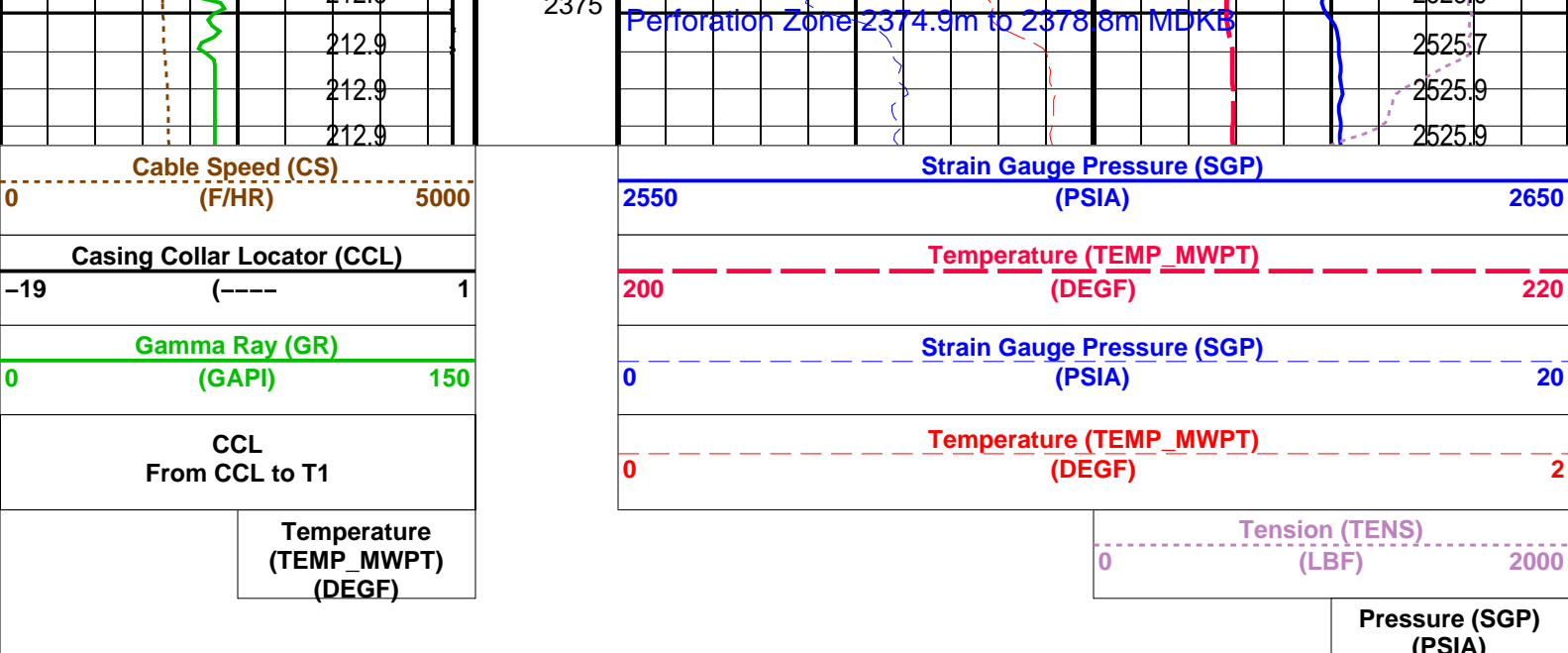
MWP\_GUN 14C0-302  
MWGT-AA 14C0-302

MWPT-CA 14C0-302

PIP SUMMARY

Time Mark Every 60 S





PIP SUMMARY

Time Mark Every 60 S

Parameters			
DLIS Name	Description	Value	
MWPT-CA: MEASUREMENT WHILE PERFORATING TOOL			
DEVI_FL_CORR	Deviation Angle for Flow Line Correction	0	DEG
FLD	Flow Line Density	1	G/C3
MWPT_NULL_SOURCE	MWPT NULL Temperature Source	TEMS	
MWPT_NULL_TEMP	MWPT NULL Temperature	0.0	DEGC

Format: MWP    Vertical Scale: 1:200    Graphics File Created: 22-Aug-2007 13:03

OP System Version: 14C0-302			
MCM			
MWP_GUN	14C0-302	MWPT-CA	14C0-302
MWGT-AA	14C0-302		

Output DLIS Files			
DEFAULT	PERFO_009LUP	FN:6    PRODUCER	22-Aug-2007 13:03

Schlumberger

GUN # 1

Correlation Pass

MAXIS Field Log

Company: Esso Australia Pty Ltd.    Well: B-13

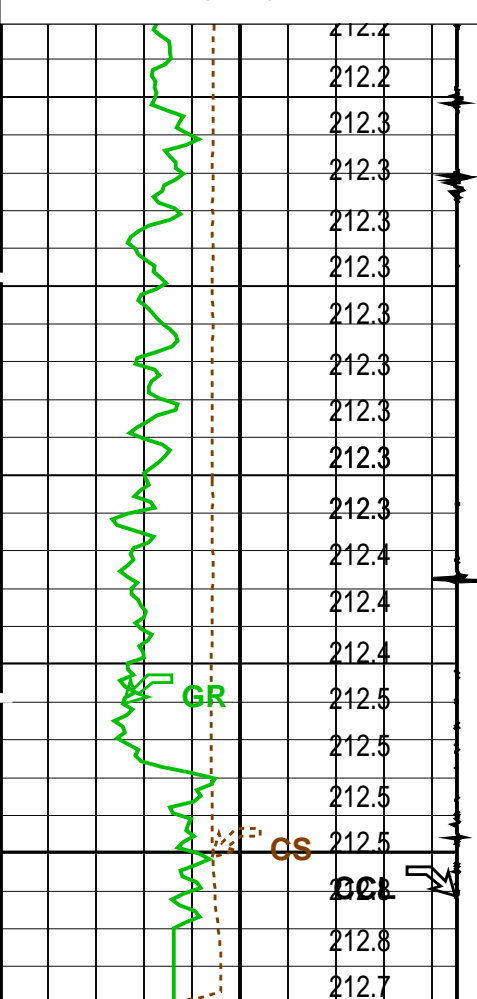
Output DLIS Files					
DEFAULT	PERFO_008LUP	FN:5    PRODUCER	22-Aug-2007 12:56	2379.0 M	2353.1 M

OP System Version: 14C0-302			
MCM			
MWP_GUN	14C0-302	MWPT-CA	14C0-302
MWGT-AA	14C0-302		

# PIP SUMMARY

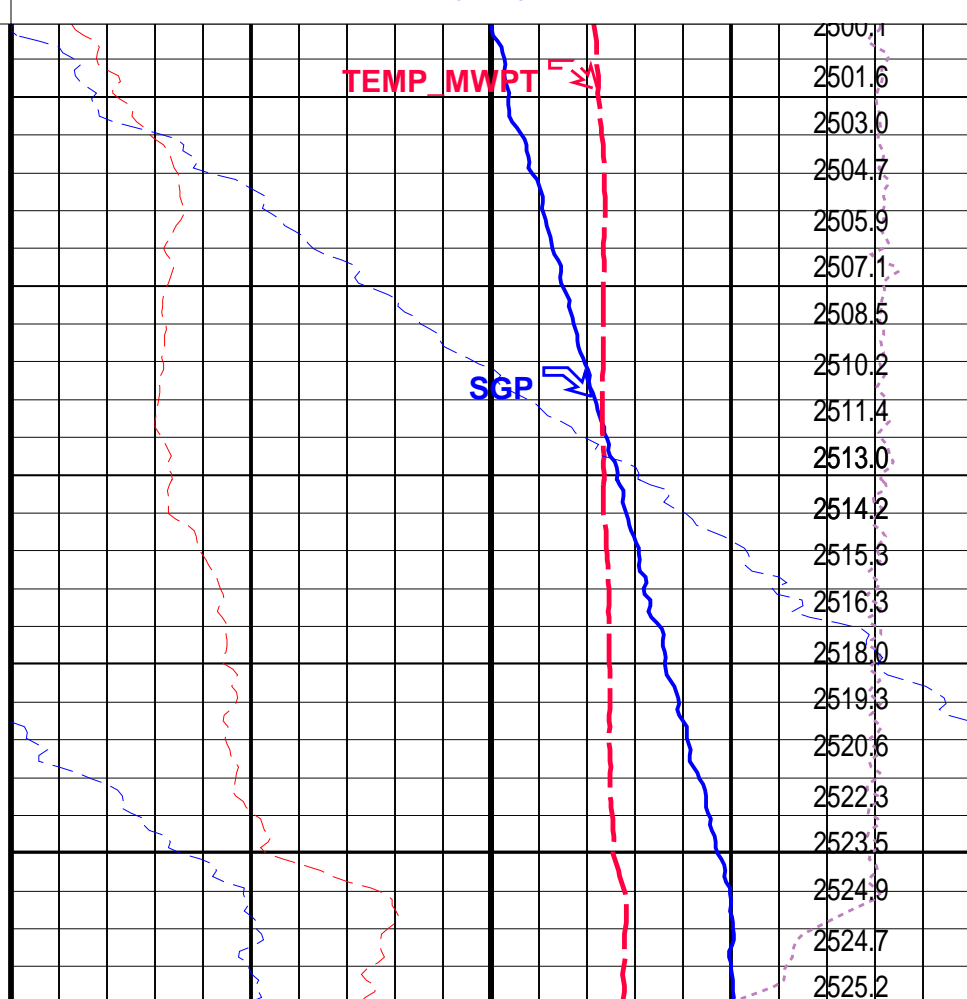
Time Mark Every 60 S

Temperature (TEMP_MWPT) (DEGF)	
CCL From CCL to T1	
Gamma Ray (GR) (GAPI)	150
Casing Collar Locator (CCL)	
-19	1
Cable Speed (CS) (F/HR)	
0	5000



Cable Speed (CS) (F/HR)	
0	5000
Casing Collar Locator (CCL)	
-19	1
Gamma Ray (GR) (GAPI)	
0	150
CCL From CCL to T1	
Temperature (TEMP_MWPT) (DEGF)	

Pressure (SGP) (PSIA)	
Tension (TENS) (LBF)	
0	2000
Temperature (TEMP_MWPT) (DEGF)	
0	2
Strain Gauge Pressure (SGP) (PSIA)	
0	20
Temperature (TEMP_MWPT) (DEGF)	
200	220
Strain Gauge Pressure (SGP) (PSIA)	
2550	2650



Strain Gauge Pressure (SGP) (PSIA)	
2550	2650
Temperature (TEMP_MWPT) (DEGF)	
200	220
Strain Gauge Pressure (SGP) (PSIA)	
0	20
Temperature (TEMP_MWPT) (DEGF)	
0	2
Tension (TENS) (LBF)	
0	2000
Pressure (SGP) (PSIA)	



Time Mark Every 60 S

PIP SUMMARY

Parameters

DLIS Name	Description	Value	
MWPT-CA: MEASUREMENT WHILE PERFORATING TOOL			
DEVI_FL_CORR	Deviation Angle for Flow Line Correction	0	DEG
FLD	Flow Line Density	1	G/C3
MWPT_NULL_SOURCE	MWPT NULL Temperature Source	TEMS	
MWPT_NULL_TEMP	MWPT NULL Temperature	0.0	DEGC

Format: MWP    Vertical Scale: 1:200    Graphics File Created: 22-Aug-2007 12:56

OP System Version: 14C0-302

MCM

MWP_GUN	14C0-302	MWPT-CA	14C0-302
MWGT-AA	14C0-302		

Output DLIS Files

DEFAULT	PERFO_008LUP	FN:5	PRODUCER	22-Aug-2007 12:56
---------	--------------	------	----------	-------------------

Company: Esso Australia Pty Ltd.

Schlumberger

Well: B-13

Field: Bream B

Rig : Prod4

Country: Australia

2 1/8"Phased Powerjet

MWPT Perforation

7"HPI PSP Plug