

Company: Esso Australia Pty Ltd.

Well: B-16
Field: Bream B
Rig : Prod4

Country: Australia

7" HPI PSP Plug	
2 1/8" Phased Powerjet	
MWPT Perforation	
Gippsland	Elev.: K.B.
Basin	G.L. -63 m
Bass Strait	D.F. 47.17 m
Permanent Datum: _____	M.S.L. _____
Log Measured From: _____	D.F. _____
Drilling Measured From: _____	D.F. _____
State: Victoria	Max. Well Deviation 58 deg
Longitude 147 50'16.98"E	
Latitude 038 31'11.10"S	
Logging Date	20-Aug-2007
Run Number	1 thru 3
Depth Driller	2380 m
Schlumberger Depth	2280 m
Bottom Log Interval	2275 m
Top Log Interval	2200 m
Casing Fluid Type	Production Fluids
Salinity	
Density	
Fluid Level	
BIT/CASING/TUBING STRING	
Bit Size	8.500 in
From	
To	
Casing/Tubing Size	7.000 in
Weight	26 lbm/ft
Grade	L-80
From	27 m
To	2599.1 m
Maximum Recorded Temperatures	229 degf
Logger On Bottom	20-Aug-2007
Unit Number	889
Recorded By	G Wright.
Witnessed By	G Rimmer.

			Run 1
PVT DATA			
Oil Density			
Water Salinity			
Gas Gravity			
Bo			
Bw			
1/Bg			
Bubble Point Pressure			
Bubble Point Temperature			
Solution GOR			
Maximum Deviation	58 deg		
CEMENTING DATA			
Primary/Squeeze	Primary		
Casing String No			
Lead Cement Type			
Volume			
Density			
Water Loss			
Additives			
Tail Cement Type			
Volume			
Density			
Water Loss			
Additives			
Expected Cement Top			
Logging Date			
Run Number			
Depth Driller			
Schlumberger Depth			
Bottom Log Interval			
Top Log Interval			
Casing Fluid Type			
Salinity			
Density			
Fluid Level			
BIT/CASING/TUBING STRING			
Bit Size			
From			
To			
Casing/Tubing Size			
Weight			
Grade			
From			
To			
Maximum Recorded Temperatures			
Logger On Bottom	Time		
Unit Number	Location		
Recorded By			
Witnessed By			

DEPTH SUMMARY LISTING

Date Created: 22-AUG-2007 10:36:15

Depth System Equipment

Depth Measuring Device	Tension Device	Logging Cable
Type: IDW-EB Serial Number: 6373 Calibration Date: 04-Jan-2007 Calibrator Serial Number: 9 Calibration Cable Type: 2-32ZT Wheel Correction 1: -2 Wheel Correction 2: -4	Type: PSDS/OSDS Serial Number: 325357 Calibration Date: 24-July-2007 Calibrator Serial Number: 1174 Calibration Gain: 0.92 Calibration Offset: 199.00	Type: 2-32ZT Serial Number: 24425 Length: 6289.85 M Conveyance Method: Wireline Rig Type: Offshore_Fixed

Depth Control Parameters

Log Sequence:	Subsequent Log In the Well
Reference Log Name:	ExxonMobil Solar composite.
Reference Log Run Number:	
Reference Log Date:	

Depth Control Remarks

1. IDW used as primary depth control.
2. Z-chart used as secondary back-up.
3.
4.
5.
6.

DISCLAIMER

THE USE OF AND RELIANCE UPON THIS RECORDED-DATA BY THE HEREIN NAMED COMPANY (AND ANY OF ITS AFFILIATES, PARTNERS, REPRESENTATIVES, AGENTS, CONSULTANTS AND EMPLOYEES) IS SUBJECT TO THE TERMS AND CONDITIONS AGREED UPON BETWEEN SCHLUMBERGER AND THE COMPANY, INCLUDING: (a) RESTRICTIONS ON USE OF THE RECORDED-DATA; (b) DISCLAIMERS AND WAIVERS OF WARRANTIES AND REPRESENTATIONS REGARDING COMPANY'S USE OF AND RELIANCE UPON THE RECORDED-DATA; AND (c) CUSTOMER'S FULL AND SOLE RESPONSIBILITY FOR ANY INFERENCE DRAWN OR DECISION MADE IN CONNECTION WITH THE USE OF THIS RECORDED-DATA.

OTHER SERVICES1 OS1: None OS2: OS3: OS4: OS5:
REMARKS: RUN NUMBER 1
Log correlated to ExxonMobil dated 14-Feb-2007.
Maximum well deviation = 58 degrees at 2045m MDKB.
Run one, 2 1/8" dummy plug run to 2280m MDKB.
Run two, 7" HPI longlife PSP run and set at 2250m MDKB.
Run three, 2 1/8" 45 degree Phased Powerjet at 6 spf were used for this perforation.
Interval perforated 2202.4m to 2205.4m MDKB.
SBHP - 2670 nsia

SBHT = 229 degf.					
Crew : John Light & Jake Annear.					
RUN 1			RUN 2		
SERVICE ORDER #:		Ausl07484960			
PROGRAM VERSION:		14C0-302			
FLUID LEVEL:					
LOGGED INTERVAL	START	STOP	LOGGED INTERVAL	START	STOP

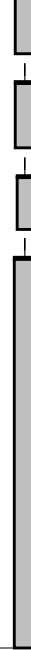
EQUIPMENT DESCRIPTION					
RUN 1			RUN 2		
SURFACE EQUIPMENT			SURFACE EQUIPMENT		
WITM (SHM)			MWPM-AA 3008		
DOWNHOLE EQUIPMENT			DOWNHOLE EQUIPMENT		
<div> <div>AH-SWBS-B 763</div> <div> <div></div> <div>16.79</div> </div> </div> <div> <div>MH-SWHS-A 726</div> <div> <div></div> <div>16.09</div> </div> </div> <div> <div>CCL-L 4191</div> <div> <div>Tension CCL</div> <div>TOOL ZERO</div> <div>15.70</div> </div> </div> <div> <div>AH-HPI Electro-Hydrostatic Setting Tool</div> <div> <div></div> <div>15.24</div> </div> </div>			<div> <div>AH-SWHS-B 761</div> <div> <div></div> <div>11.93</div> </div> </div> <div> <div>AH-SWHS-B 762</div> <div> <div></div> <div>11.24</div> </div> </div> <div> <div>AH-SWHS-B 763</div> <div> <div></div> <div>10.56</div> </div> </div> <div> <div>AH-SWHS-B 731</div> <div> <div></div> <div>9.87</div> </div> </div> <div> <div>MH-SWHS-A 754</div> <div> <div></div> <div>9.19</div> </div> </div> <div> <div>MWPG-AA 24</div> <div>MWGH-AA 19</div> <div> <div>MWPG GR</div> <div>2.41</div> </div> <div> <div>8.86</div> </div> </div> <div> <div>MWPH-AA 11</div> <div>MWPS-AA 94</div> <div> <div> <div>CCL</div> <div>SMWP Pres</div> <div>SMWP Temp</div> <div>Tension</div> </div> <div>TOOL ZERO</div> <div>7.88</div> </div> </div> <div> <div>AH-SAH-G 1035</div> <div> <div></div> <div>5.06</div> </div> </div> <div> <div></div> <div>4.68</div> </div>		



3.30

TOOL BOTTOM

MAXIMUM STRING DIAMETER 2.13 IN
MEASUREMENTS RELATIVE TO TOOL ZERO
ALL LENGTHS IN METERS



4.60

AH-Flex Joint 42

4.14

AH-ESIC 15042002

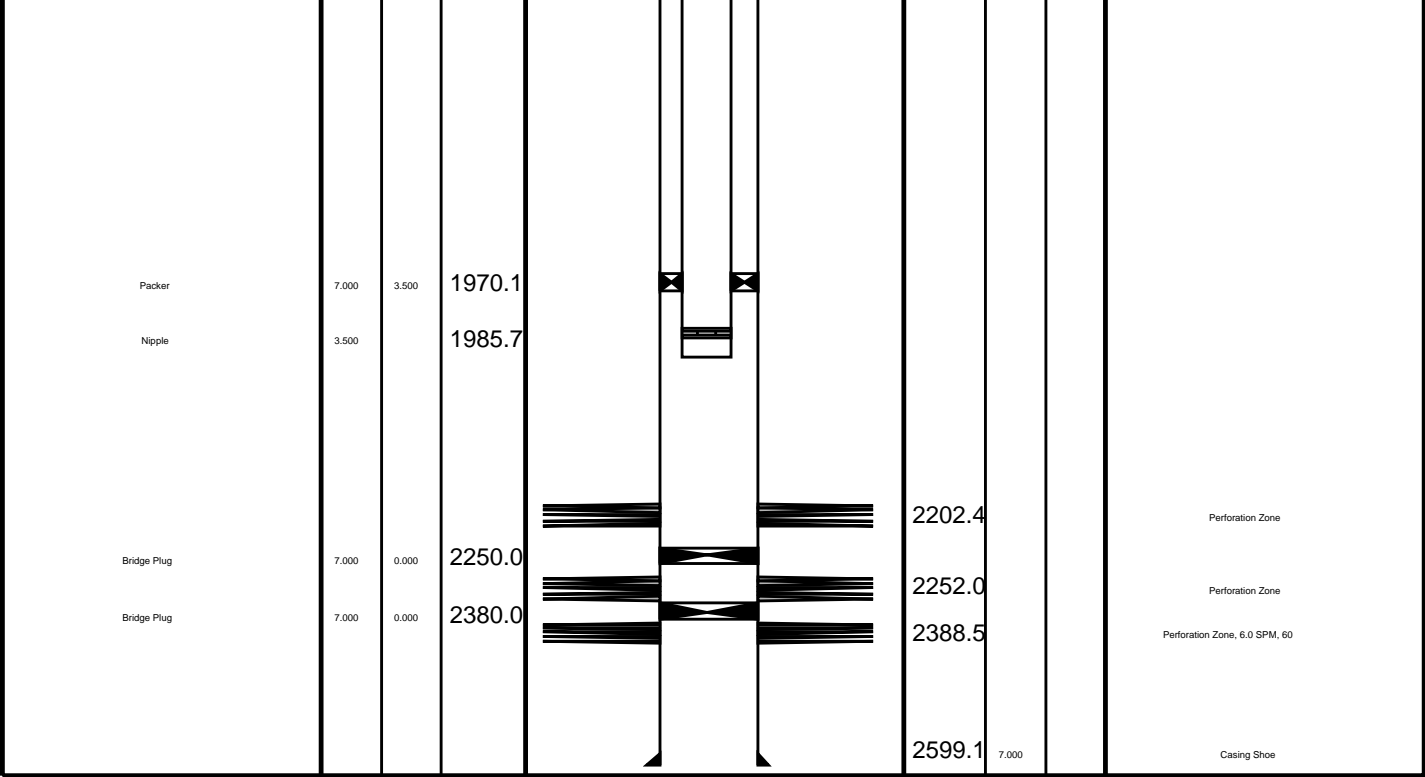
3.61

GUN-3 mtr Powerjet Gun 1

3.17

TOOL BOTTOM

MAXIMUM STRING DIAMETER 2.13 IN
MEASUREMENTS RELATIVE TO TOOL ZERO
ALL LENGTHS IN METERS



Job Event Summary

MAXIS Field Log

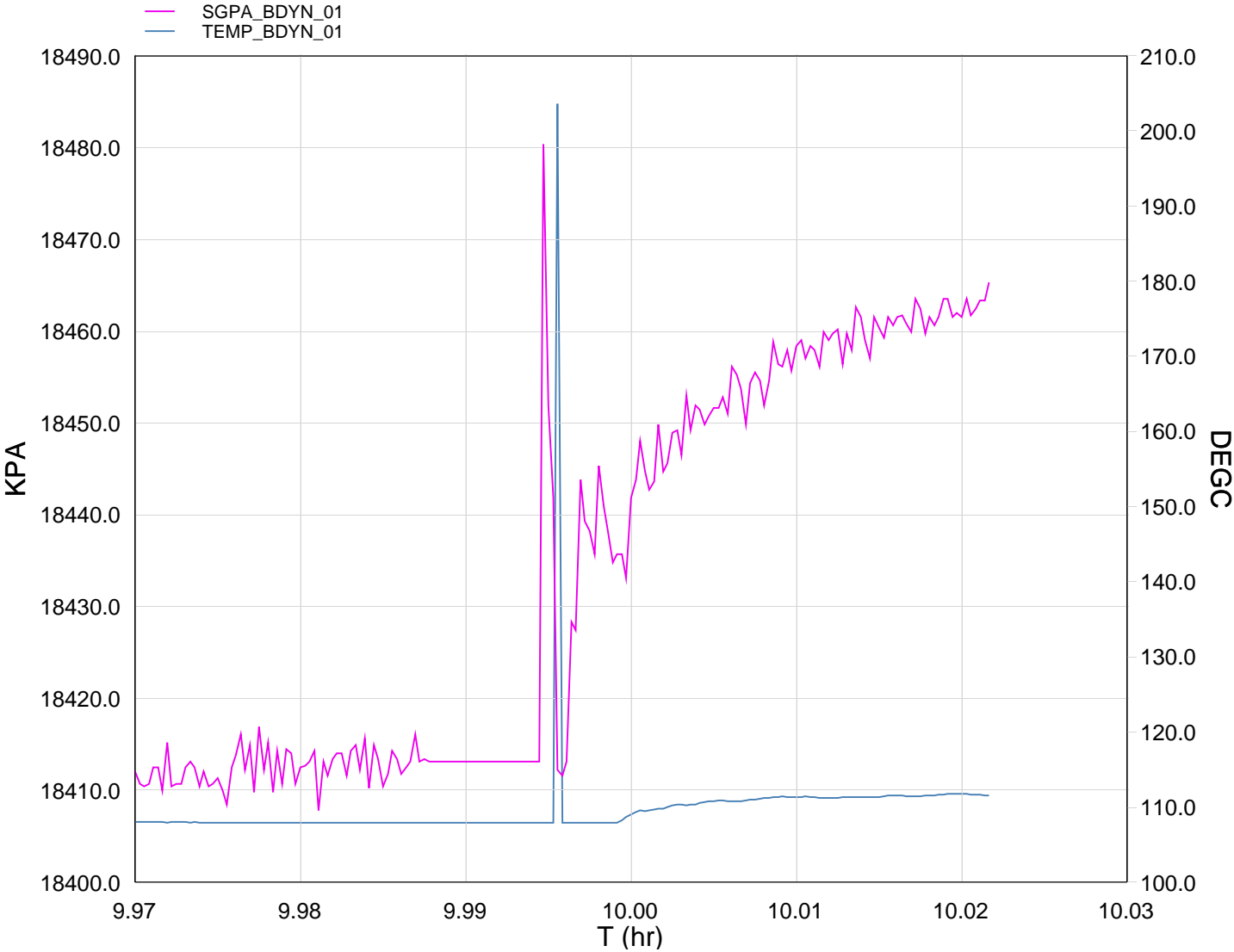
Schlumberger Job Event Summary

Time	Elapsed Time	Depth (M)	File
Log Pass (down)	21-Aug-2007 9:10 000:23	1.4 - 2274.0	PERFO_017LDP
Log Pass (up)	21-Aug-2007 9:33 000:03	2276.1 - 2227.6	PERFO_018LUP
Log Pass (up)	21-Aug-2007 9:37 000:14	2254.8 - 2204.9	PERFO_019LUP
Log Pass (up)	21-Aug-2007 10:03 000:03	17.7 - 6.1	PERFO_020LUP
Simulated Log	21-Aug-2007 10:39 000:01		PERFO_021LUP
Log Pass (down)	22-Aug-2007 9:42 000:08	1041.0 - 2236.3	PERFO_024LDP
Log Pass (up)	22-Aug-2007 9:50 000:05	2240.0 - 2193.6	PERFO_025LUP
Log Pass (up)	22-Aug-2007 9:56 000:06	2213.0 - 2184.0	PERFO_026LUP
Station Log	22-Aug-2007 9:58 000:03	2198.9 - 0.5	PERFO_027LTP



GUN # 1
2202.4m to 2205.4m MDKB.

MAXIS Field Log



TIME DEGF PSIA

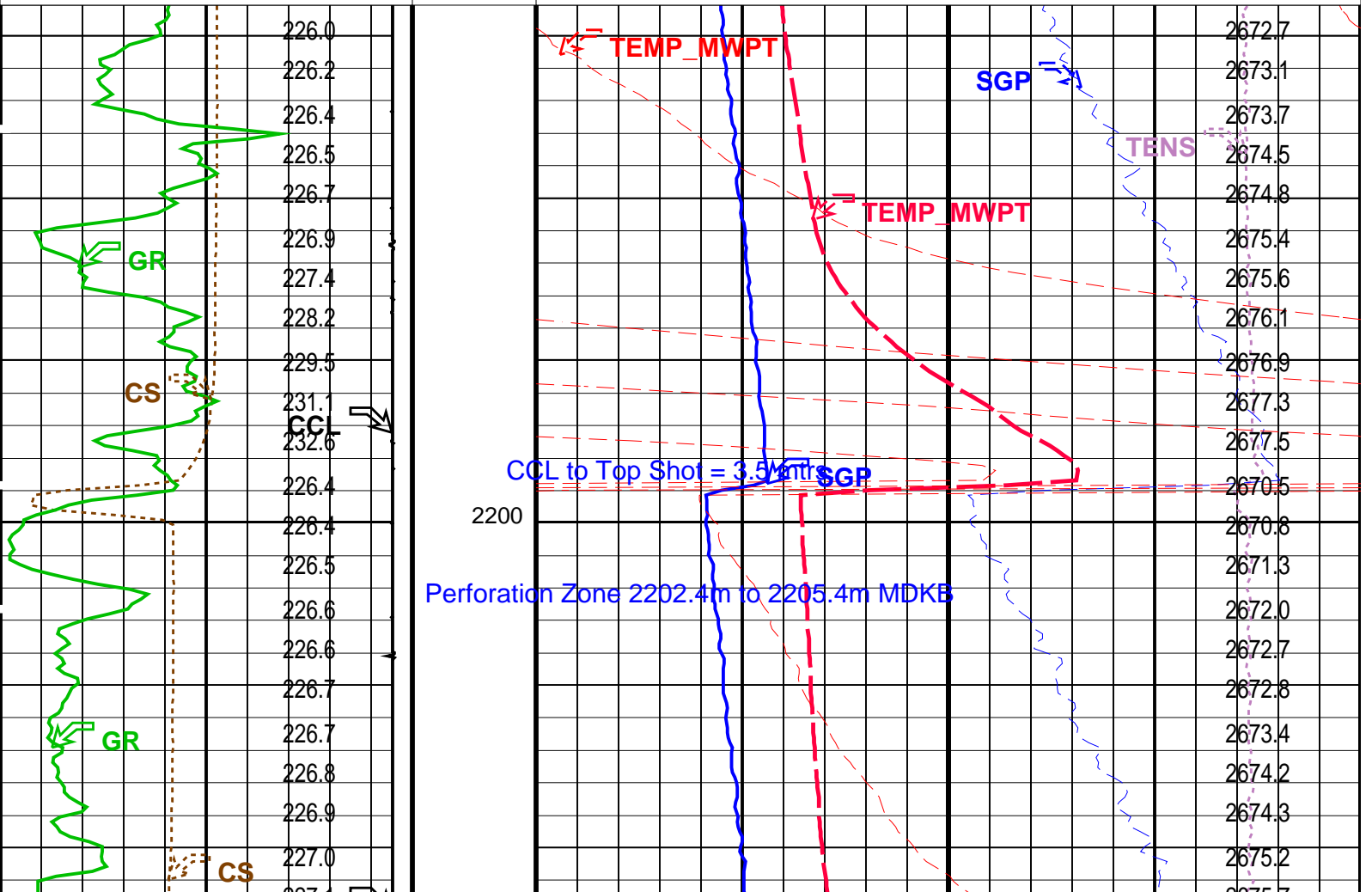
1200.0	232.92	2677.881
1180.0	232.66	2677.405
1160.0	232.41	2677.129
1140.0	231.14	2675.964
1120.0	226.25	2674.092
1100.0	226.28	2670.602
1080.0	226.28	2670.602
1060.0	226.30	2670.732
1040.0	226.33	2670.616
1020.0	226.27	2670.878

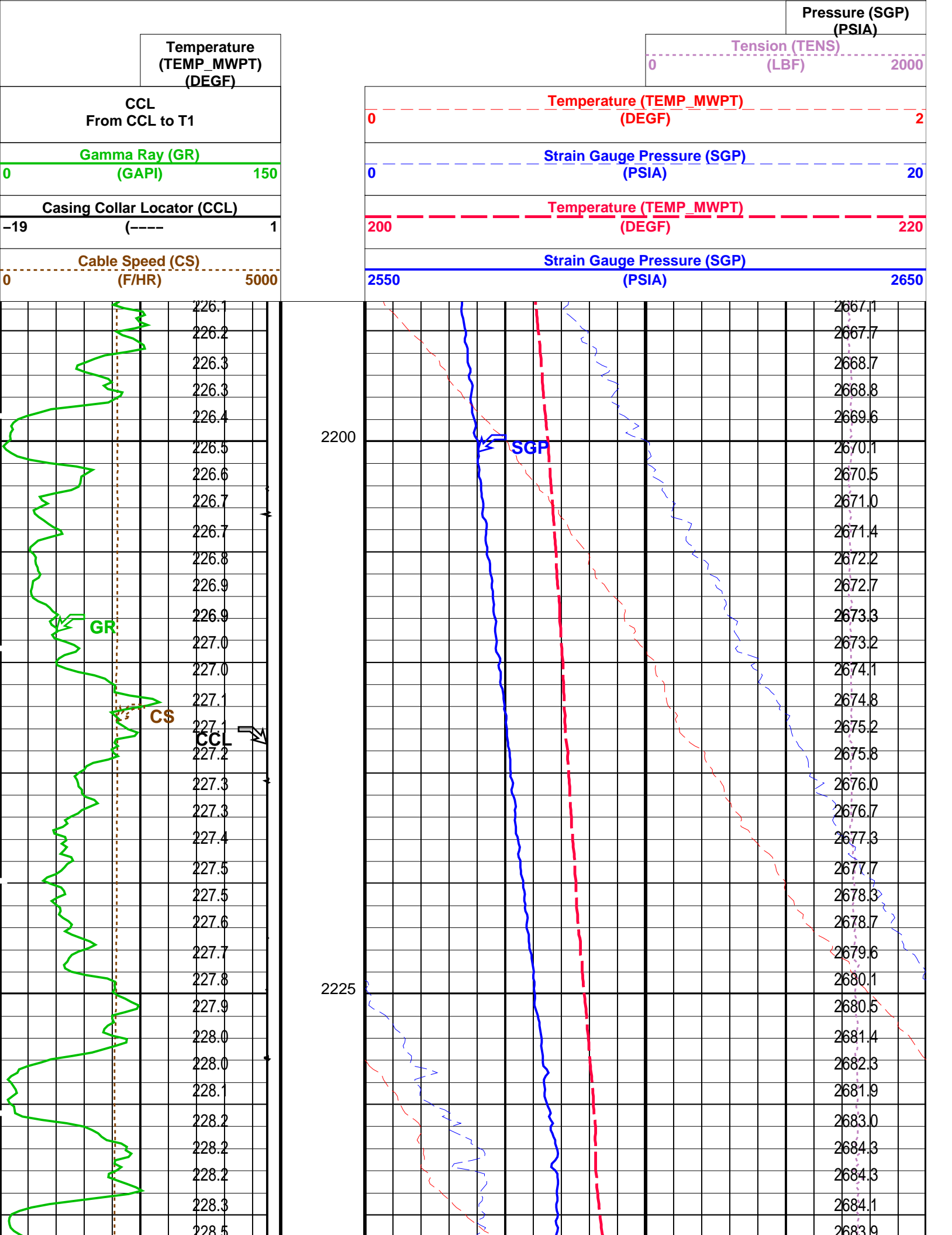
Company: Esso Australia Pty Ltd.						Well: B-16	
Output DLIS Files							
DEFAULT	PERFO_026LUP	FN:25	PRODUCER	22-Aug-2007 09:56	2213.0 M	2184.0 M	
OP System Version: 14C0-302							
MCM							
MWP_GUN	14C0-302	MWPT-CA		14C0-302			
MWGT-AA	14C0-302						

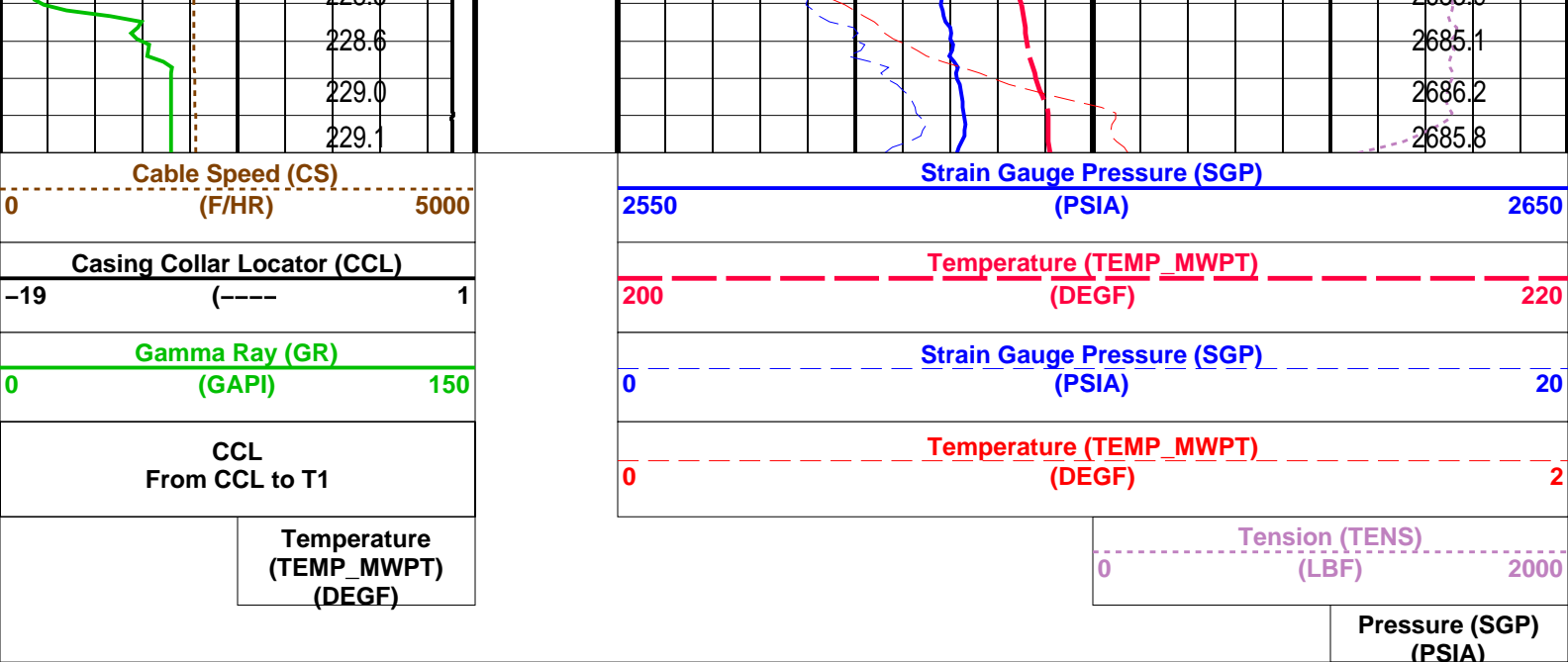
PIP SUMMARY

Time Mark Every 60 S

Temperature (TEMP_MWPT) (DEGF)		Pressure (SGP) (PSIA)	
CCL From CCL to T1		Tension (TENS) (LBF)	
Gamma Ray (GR) (GAPI)			
Casing Collar Locator (CCL)		Temperature (TEMP_MWPT) (DEGF)	
Cable Speed (CS) (F/HR)		Strain Gauge Pressure (SGP) (PSIA)	







PIP SUMMARY


Time Mark Every 60 S

Parameters			
DLIS Name	Description	Value	
MWPT-CA: MEASUREMENT WHILE PERFORATING TOOL			
DEVI_FL_CORR	Deviation Angle for Flow Line Correction	0	DEG
FLD	Flow Line Density	1	G/C3
MWPT_NULL_SOURCE	MWPT NULL Temperature Source	TEMS	
MWPT_NULL_TEMP	MWPT NULL Temperature	0.0	DEGC

Format: MWP Vertical Scale: 1:200 Graphics File Created: 22-Aug-2007 09:50

OP System Version: 14C0-302			
MCM			
MWP_GUN	14C0-302	MWPT-CA	14C0-302
MWGT-AA	14C0-302		

Output DLIS Files			
DEFAULT	PERFO_025LUP	FN:24 PRODUCER	22-Aug-2007 09:50



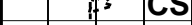
7" PSP HPI Plug
Set @ 2250m MDKB

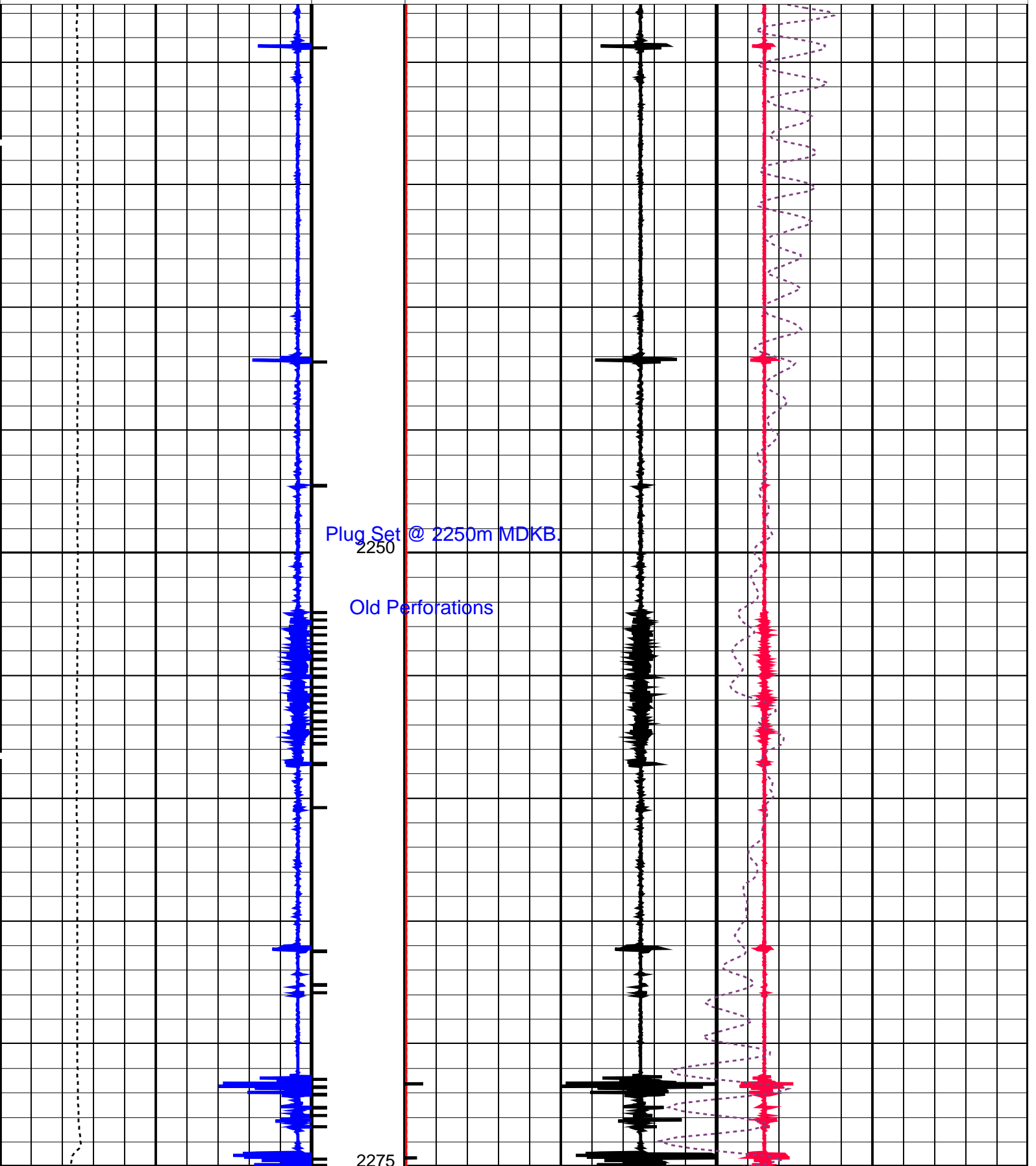
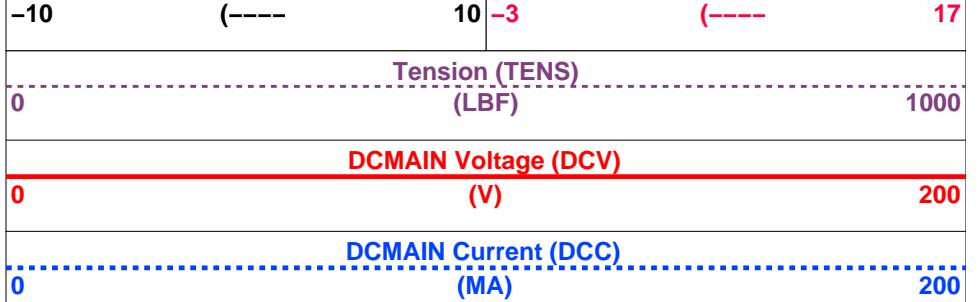
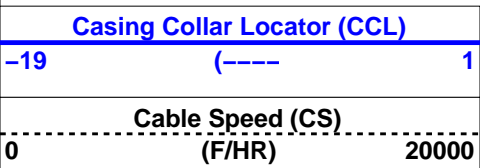
MAXIS Field Log

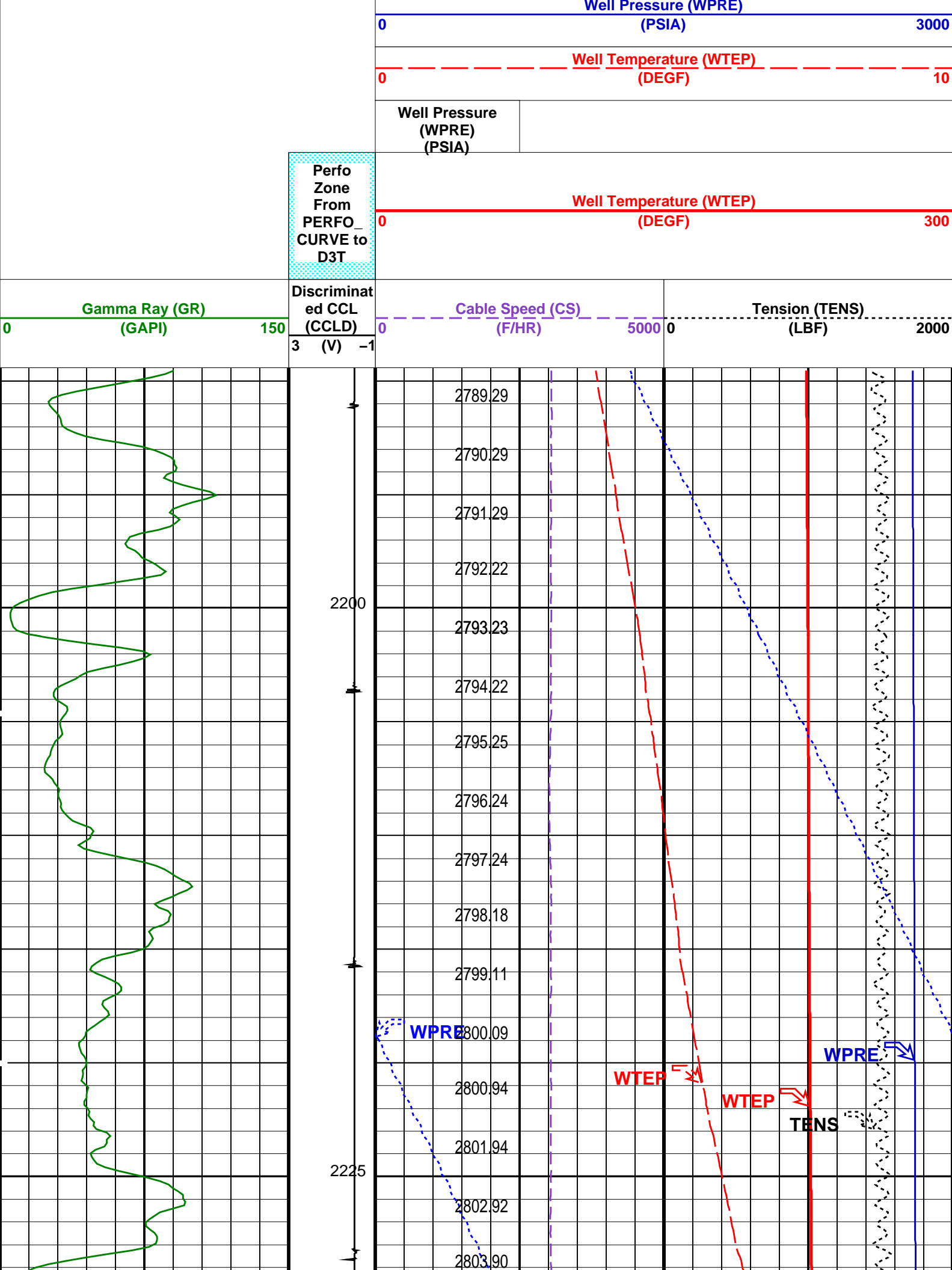
Output DLIS Files					
DEFAULT	PERFO_019LUP	FN:18	PRODUCER	21-Aug-2007 09:37	2254.8 M 2204.9 M

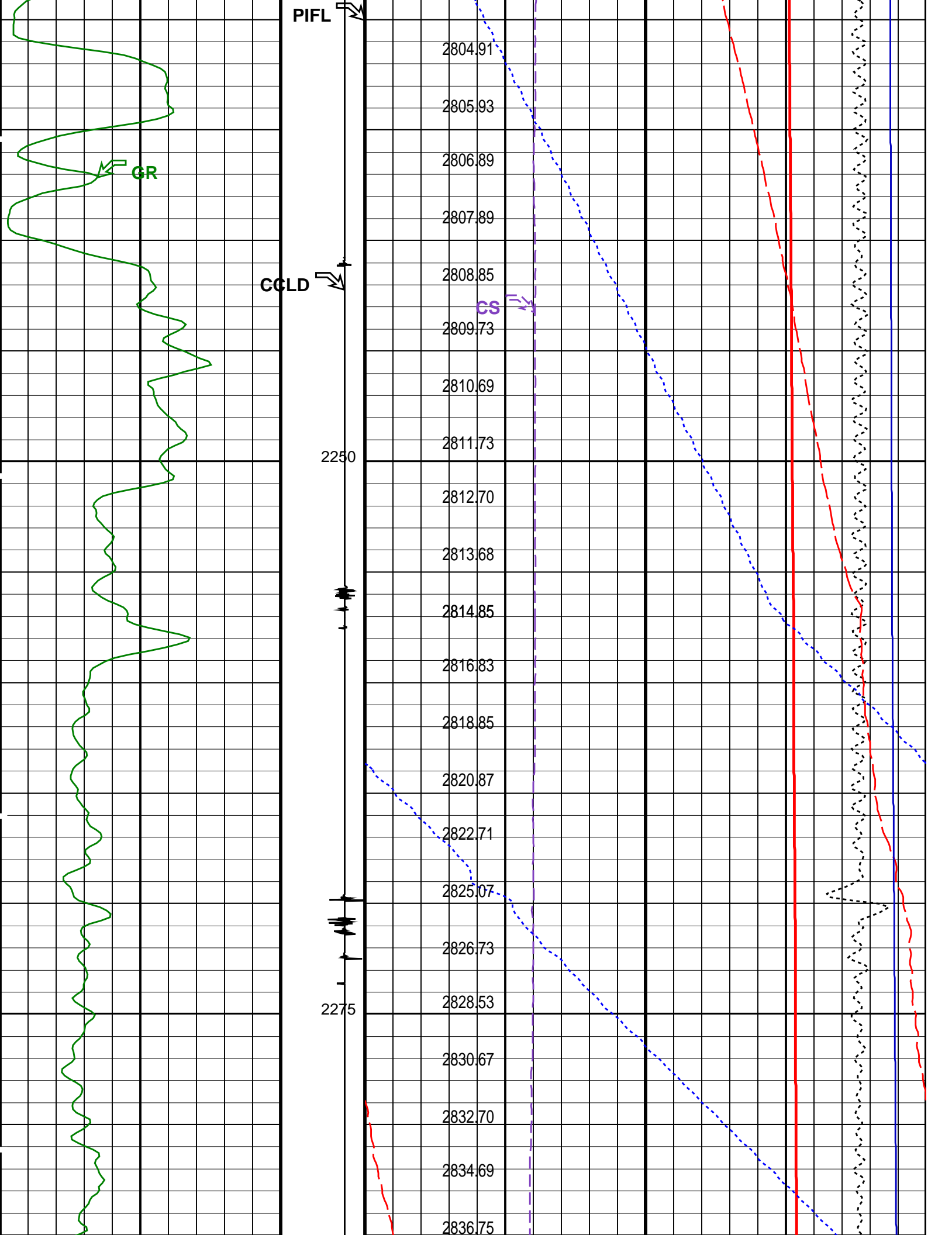
OP System Version: 14C0-302		
MCM		
SHM_GUN	14C0-302	CCL-L 14C0-302

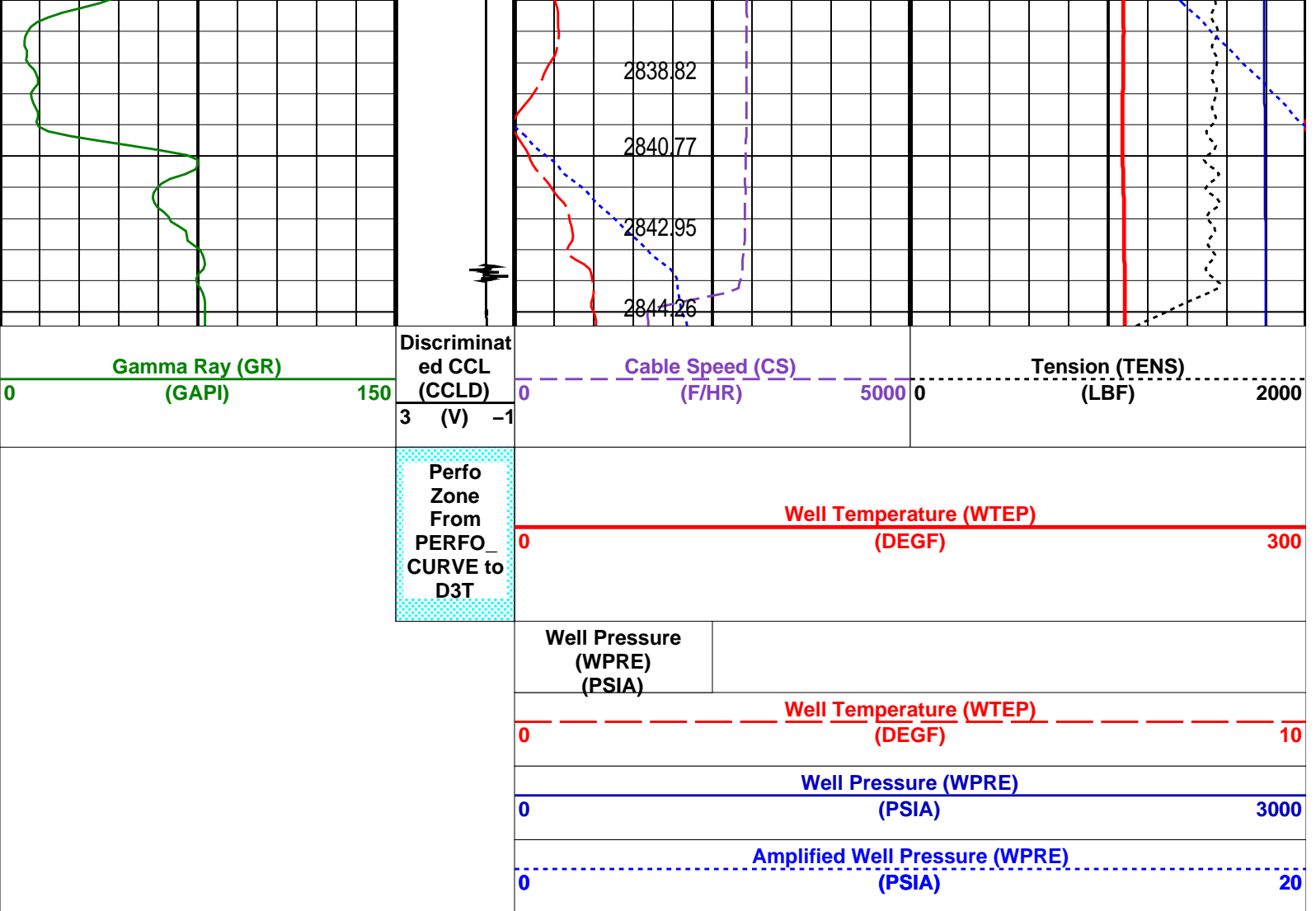
PIP SUMMARY











PIP SUMMARY

Time Mark Every 60 S

Format: PSP_1 Vertical Scale: 1:200

Graphics File Created: 20-Aug-2007 14:42

OP System Version: 14C0-302
MCM

PSPT-A/B 14C0-302

Parameters

DLIS Name	Description	Value
DO PP	System and Miscellaneous Depth Offset for Playback Playback Processing	6.7 M NORMAL

Input DLIS Files

DEFAULT PSP_007LUP FN:6 PRODUCER 20-Aug-2007 13:15 2288.7 M 2182.2 M

Output DLIS Files

DEFAULT PSP_010PUP FN:9 PRODUCER 20-Aug-2007 14:42

Company: Esso Australia Pty Ltd.

Schlumberger

Well: B-16
Field: Bream B
Rig : Prod4

Country: **Australia**

7" HPI PSP Plug

2 1/8" Phased Powerjet

MWPT Perforation