

Company: Esso Australia Pty Ltd.

Well: B-12

Field: Bream B

Rig: Crane / Prod4

Country: Australia

Crane / Prod4
Bream B
Gippsland
B-12
Esso Australia Pty Ltd.

2 1/8" Phased Powerjet
MWPT Perforation Record
7" HPI Plug Setting Record

Gippsland		Elev.:	K.B.	42.9 m
Basin			G.L.	-77 m
Bass Strait			D.F.	42.6 m
Permanent Datum:		M.S.L		
Log Measured From:		D.F	42.6 m above Perm. Datum	
Drilling Measured From:		D.F		

State: Victoria	Max. Well Deviation 63 deg	Longitude 148°06'15.37"E	Latitude 038°35'40.34S
--------------------	-------------------------------	-----------------------------	---------------------------

Logging Date	14-Aug-2007		
Run Number	1 though 3		
Depth Driller	3333 m		
Schlumberger Depth	3333 m		
Bottom Log Interval	3323 m		
Top Log Interval	3250 m		
Casing Fluid Type	Production Fluids		
Salinity			
Density			
Fluid Level			
BIT/CASING/TUBING STRING			
Bit Size	8.500 in		
From			
To			
Casing/Tubing Size	7.000 in		
Weight	29 lbn/ft		
Grade	L-80		
From	21.75 m		
To	3547.06 m		
Maximum Recorded Temperatures	210 degF		
Logger On Bottom	14-Aug-2007		10:00
Unit Number	889	Prod4	
Recorded By	S Gilbert,G Wright.		
Witnessed By	B Robinson.		

Run 1			
PVT DATA			
Oil Density			
Water Salinity			
Gas Gravity			
Bo			
Bw			
1/Bg			
Bubble Point Pressure			
Bubble Point Temperature			
Solution GOR			
Maximum Deviation			63 deg
CEMENTING DATA			
Primary/Squeeze			Primary
Casing String No			
Lead Cement Type			
Volume			
Density			
Water Loss			
Additives			
Tail Cement Type			
Volume			
Density			
Water Loss			
Additives			
Expected Cement Top			
Logging Date			
Run Number			
Depth Driller			
Schlumberger Depth			
Bottom Log Interval			
Top Log Interval			
Casing Fluid Type			
Salinity			
Density			
Fluid Level			
BIT/CASING/TUBING STRING			
Bit Size			
From			
To			
Casing/Tubing Size			
Weight			
Grade			
From			
To			
Maximum Recorded Temperatures			
Logger On Bottom			
Unit Number			
Recorded By			
Witnessed By			

DEPTH SUMMARY LISTING

Depth System Equipment

Depth Measuring Device	Tension Device	Logging Cable
Type: IDW-EB Serial Number: 6373 Calibration Date: 4-Jan-2007 Calibrator Serial Number: 9 Calibration Cable Type: 2-32ZT Wheel Correction 1: -2 Wheel Correction 2: -4	Type: PSDS/OSDS Serial Number: 325357 Calibration Date: 24-July-2007 Calibrator Serial Number: 1174 Calibration Gain: 0.89 Calibration Offset: 230.00	Type: 2-32ZT Serial Number: 24425 Length: 6326 M Conveyance Method: Wireline Rig Type: Offshore_Fixed

Depth Control Parameters

Log Sequence:	Subsequent Log In the Well
Reference Log Name:	Solar Composite Log
Reference Log Run Number:	
Reference Log Date:	

Depth Control Remarks

1. IDW used as Primary Depth control.
2. Z-chart used as Secondary depth control
3.
4.
5.
6.

DISCLAIMER

THE USE OF AND RELIANCE UPON THIS RECORDED-DATA BY THE HEREIN NAMED COMPANY (AND ANY OF ITS AFFILIATES, PARTNERS, REPRESENTATIVES, AGENTS, CONSULTANTS AND EMPLOYEES) IS SUBJECT TO THE TERMS AND CONDITIONS AGREED UPON BETWEEN SCHLUMBERGER AND THE COMPANY, INCLUDING: (a) RESTRICTIONS ON USE OF THE RECORDED-DATA; (b) DISCLAIMERS AND WAIVERS OF WARRANTIES AND REPRESENTATIONS REGARDING COMPANY'S USE OF AND RELIANCE UPON THE RECORDED-DATA; AND (c) CUSTOMER'S FULL AND SOLE RESPONSIBILITY FOR ANY INFERENCE DRAWN OR DECISION MADE IN CONNECTION WITH THE USE OF THIS RECORDED-DATA.
















OTHER SERVICES1
OS1: None
OS2:
OS3:
OS4:
OS5:
REMARKS: RUN NUMBER 1
Log correlated to ExxonMobil composite Log dated 07-Oct-2003.
Maximum well deviation = 63 degrees at 932.5m MDKB.
Objectives: Perforate the interval 3313.5m to 3319.5m MDKB
using 2 1/8" 45 deg Phased Powerjet guns @ 6 spf.
Then set a 7" HPI plug at 3323m MDKB.
SBHP: 2677 psia SBHT: 201 degf.
Gun # 1
Top Shot @ 3313.5m MDKB

Top Shot @ 3313.5m MDKB
CCL to Top Shot = 3m
CCL Stop Depth = 3310.5m MDKB
7" Plug
Top of Seal @ 3323m MDKB
CCL to Top of Seal = 10m
CCL Stop Depth = 3313m MDKB
Plug set whilst logging down due to depth restrictions.
Crew : Andrew Hall , Chris Shiells

RUN 1			RUN 2		
SERVICE ORDER #:		AUSL07484951	SERVICE ORDER #:		
PROGRAM VERSION:		14C0-302	PROGRAM VERSION:		
FLUID LEVEL:		0 m	FLUID LEVEL:		
LOGGED INTERVAL	START	STOP	LOGGED INTERVAL	START	STOP

EQUIPMENT DESCRIPTION					
RUN 1			RUN 2		

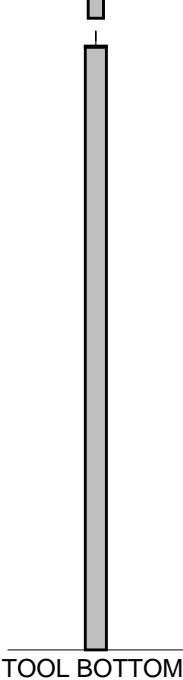
SURFACE EQUIPMENT		SURFACE EQUIPMENT	
MWPM-. 3000		WITM (SHM)	

DOWNHOLE EQUIPMENT			DOWNHOLE EQUIPMENT		
AH-SWBS-B 731		14.82	AH-SWBS-B		16.97
AH-SWBS-B 731			AH-SWBS-B 763		
AH-SWBS-B 761		14.14	MH-SWHS-A		16.27
AH-SWBS-B 761			MH-SWHS-A 726		
AH-SWBS-B 762		13.45	CCL-L 4191	Tension CCL	TOOL ZERO
AH-SWBS-B 762			CCL-L 4191		15.88
AH-SWBS-B 763		12.76	AH-HPI Electro-Hydrostatic Setting Tool		15.42
AH-SWBS-B 763			AH-HPI Electro-Hydrostatic Setting Tool		
MH-SWHS-A 726		12.08			
AH-124 1001		11.75			
MWGT-AA 19		11.54			
MWPG-AA 19					
MWGH-AA 19	MWPG GR	2.41			
MWPT-CA 94		10.57			
MWPH-AA 94					
MWPS-AA 94					
	CCL				
	SMWP Pres				
	SMWP Temp				
	Tension	TOOL ZERO			
AH-Flex Joint 41		7.75			
AH-Flex Joint 41					
AH-122 8		7.19			
AH-SAH-G 1035		7.09			
AH-SAH-G 1035					
AH-ESIC 4100821		6.63			

AH-ESIC 4100821

MWP_GUN
 GUN-6 mtr Powerjet Gun 1

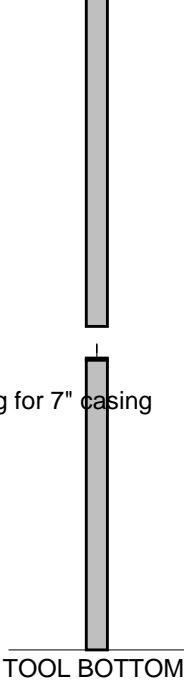
6.17



MAXIMUM STRING DIAMETER 2.13 IN
 MEASUREMENTS RELATIVE TO TOOL ZERO
 ALL LENGTHS IN METERS

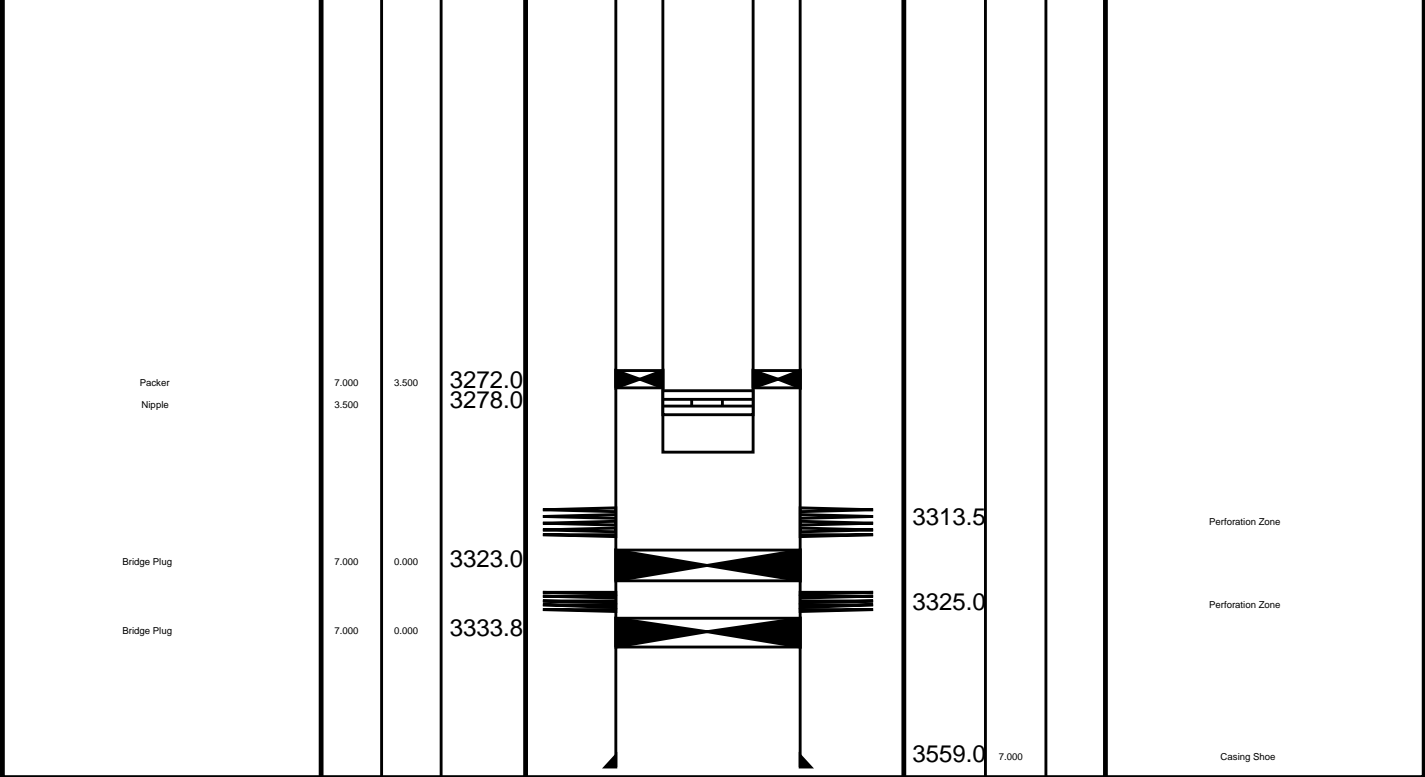
SHM_GUN
 GUN-2.13" HPI Long Life PSP Plug for 7" casing

3.00



MAXIMUM STRING DIAMETER 2.13 IN
 MEASUREMENTS RELATIVE TO TOOL ZERO
 ALL LENGTHS IN METERS

Production String	(m)		Well Schematic	(m)			Casing String
	OD	ID		MD	OD	ID	
Tubing	3.500			20.3	22.0	10.000	Casing String Liner Hanger
				21.7	10.750	7.000	
Tubing Hanger	7.000	3.500					
Nipple	3.500			441.0			
Shutin Valve	3.500			444.0			
Gas Lift Mandrel	3.500			547.0			
Gas Lift Mandrel	3.500			950.0			
Nipple	3.500			1424.0			Casing Shoe



Job Events Summary

MAXIS Field Log

Schlumberger Job Event Summary

Time	Elapsed Time	Depth (M)	File
Log Pass (down)	13-Aug-2007 13:37 000:30	763.8 - 3322.6	PERFO_035LDP
Log Pass (up)	13-Aug-2007 14:07 000:03	3322.5 - 3297.0	PERFO_036LUP
Log Pass (up)	13-Aug-2007 14:12 000:04	3322.0 - 3306.5	PERFO_037LUP
Log Pass (up)	13-Aug-2007 14:16 000:02	3319.4 - 3296.9	PERFO_038LUP
Log Pass (up)	13-Aug-2007 14:22 000:23	3323.2 - 3288.8	PERFO_039LUP
Station Log	13-Aug-2007 14:24 000:15	3310.5 - 2.2	PERFO_040LTP
Log Pass (up)	13-Aug-2007 14:51 000:13	3240.9 - 2411.3	PERFO_041LUP
Simulated Log	14-Aug-2007 8:58 000:05		PERFO_043LUP
Log Pass (down)	14-Aug-2007 10:04 000:41	5.3 - 3254.5	PERFO_044LDP
Log Pass (down)	14-Aug-2007 10:46 000:22	3256.2 - 3313.0	PERFO_045LDP
Log Pass (up)	14-Aug-2007 11:10 000:04	3314.7 - 3272.0	PERFO_046LUP

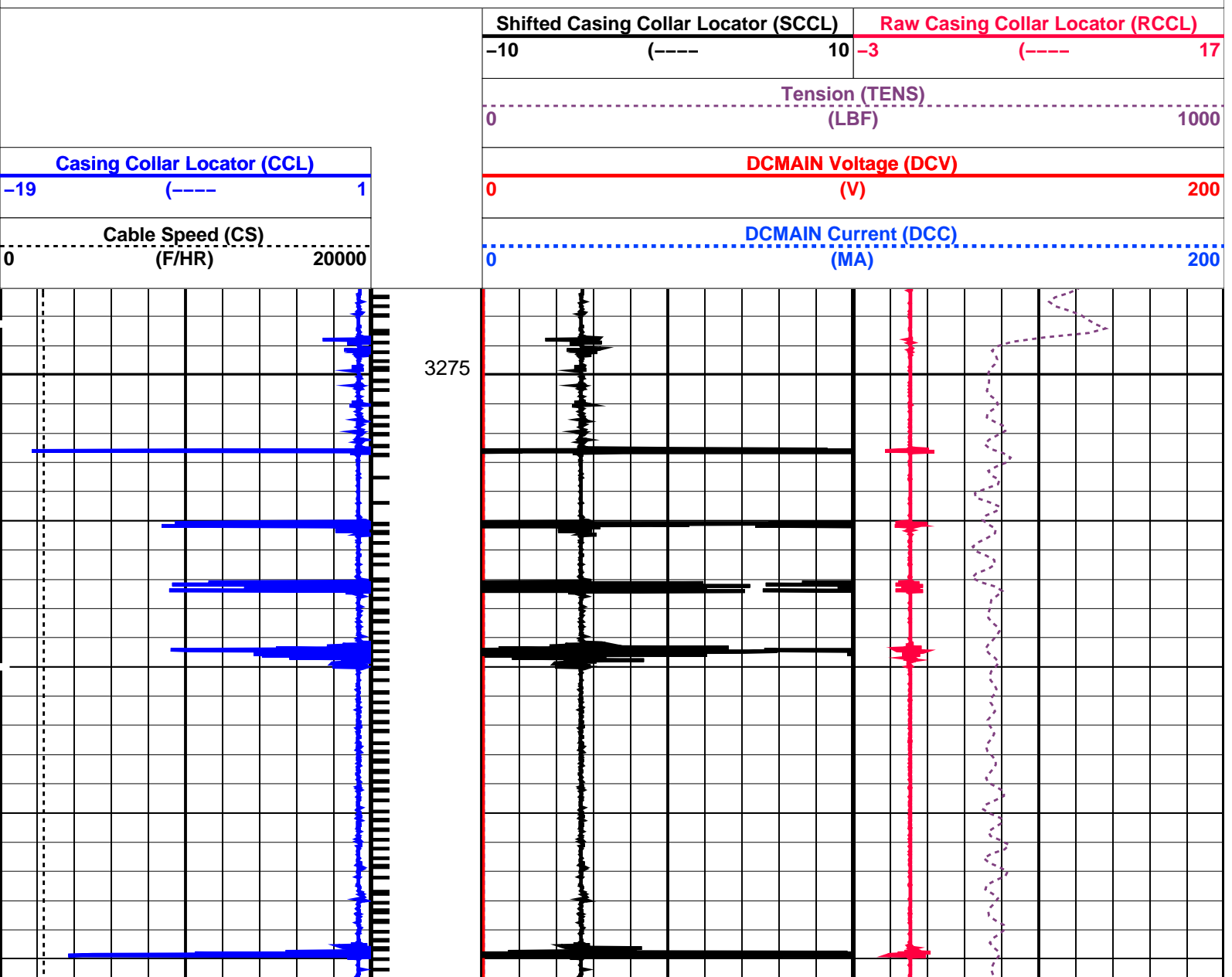


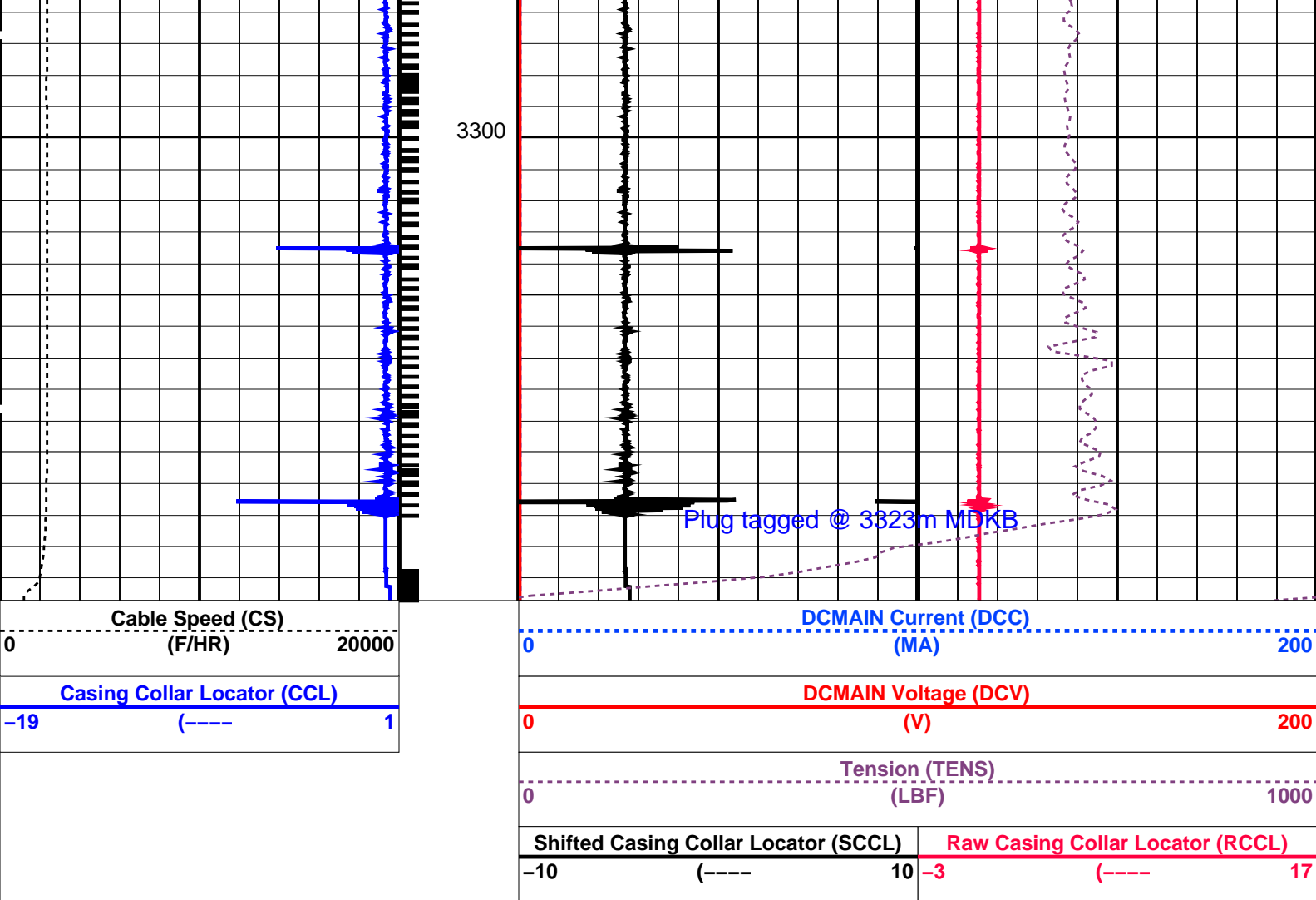
Output DLIS Files

OP System Version: 14C0-302
MCM

PIP SUMMARY

 Time Mark Every 60 S





PIP SUMMARY

← Casing Collars

Time Mark Every 60 S

Parameters

DLIS Name	Description	Value
CCL-L: Casing Collar Locator		
CCLD	CCL reset delay	12 IN
CCLT	CCL Detection Level	0.3 V

Format: PERFO Vertical Scale: 1:200

Graphics File Created: 14-Aug-2007 11:10

OP System Version: 14C0-302

MCM

SHM_GUN 14C0-302 CCL-L 14C0-302

Output DLIS Files

DEFAULT PERFO_046LUP FN:23 PRODUCER 14-Aug-2007 11:10

Schlumberger

Log Down
Plug Set @ 3323m MDKB

Input DLIS Files

DEFAULT FLIP_PERFO_052L PRODUCER 14-Aug-2007 13:03 3313.0 M 3256.2 M

Output DLIS Files

DEFAULT PERFO_053PUP FN:28 PRODUCER 14-Aug-2007 13:05 3312.9 M 3256.6 M

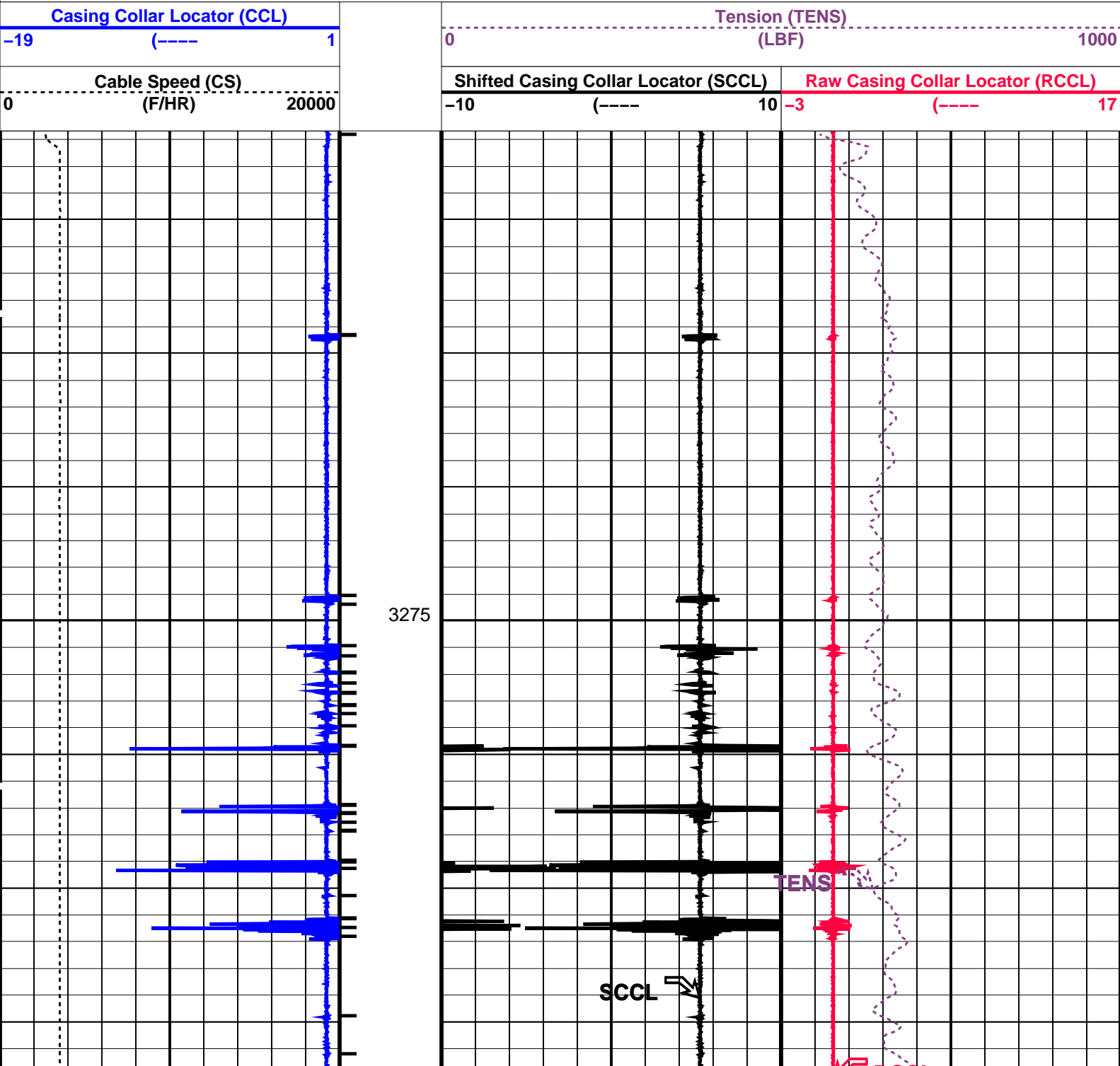
OP System Version: 14C0-302
MCM

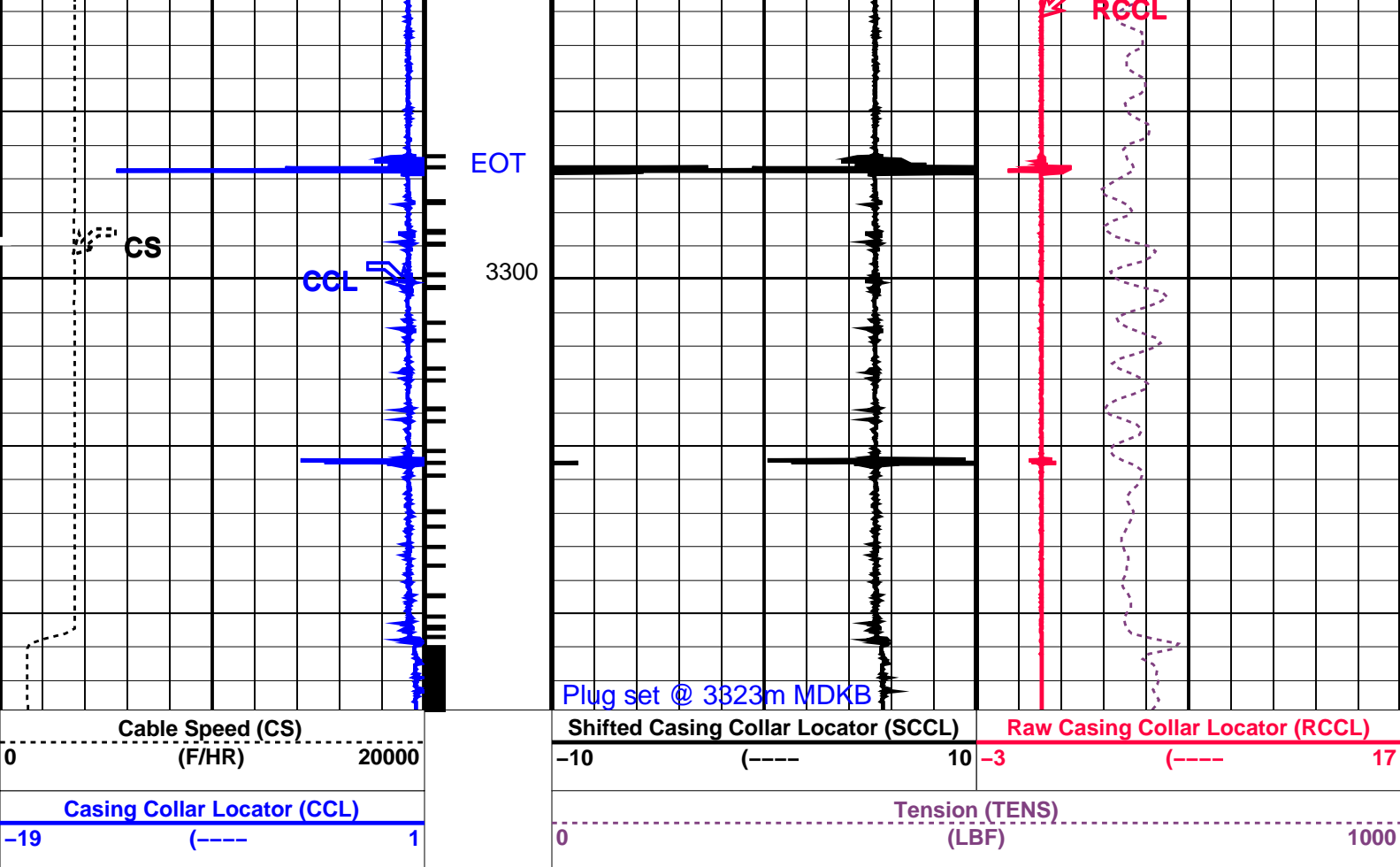
MWP_GUN 14C0-302 MWPT-CA 14C0-302
MWGT-AA 14C0-302

PIP SUMMARY

└─ Casing Collars

Time Mark Every 60 S





PIP SUMMARY

Time Mark Every 60 S

Parameters

DLIS Name	Description	Value
MWPT-CA: MEASUREMENT WHILE PERFORATING TOOL		
CCLD	CCL reset delay	12 IN
CCLT	CCL detection level	0.3 V
DEVI_FL_CORR	Deviation Angle for Flow Line Correction	0 DEG
FLD	Flow Line Density	1 G/C3
MWPT_NULL_SOURCE	MWPT NULL Temperature Source	TEMS
MWPT_NULL_TEMP	MWPT NULL Temperature	0.0 DEGC
System and Miscellaneous		
DO	Depth Offset for Playback	0.0 M
PP	Playback Processing	NORMAL

Format: PERFO Vertical Scale: 1:200

Graphics File Created: 14-Aug-2007 13:05

OP System Version: 14C0-302

MCM

MWP_GUN 14C0-302 MWPT-CA 14C0-302
MWGT-AA 14C0-302

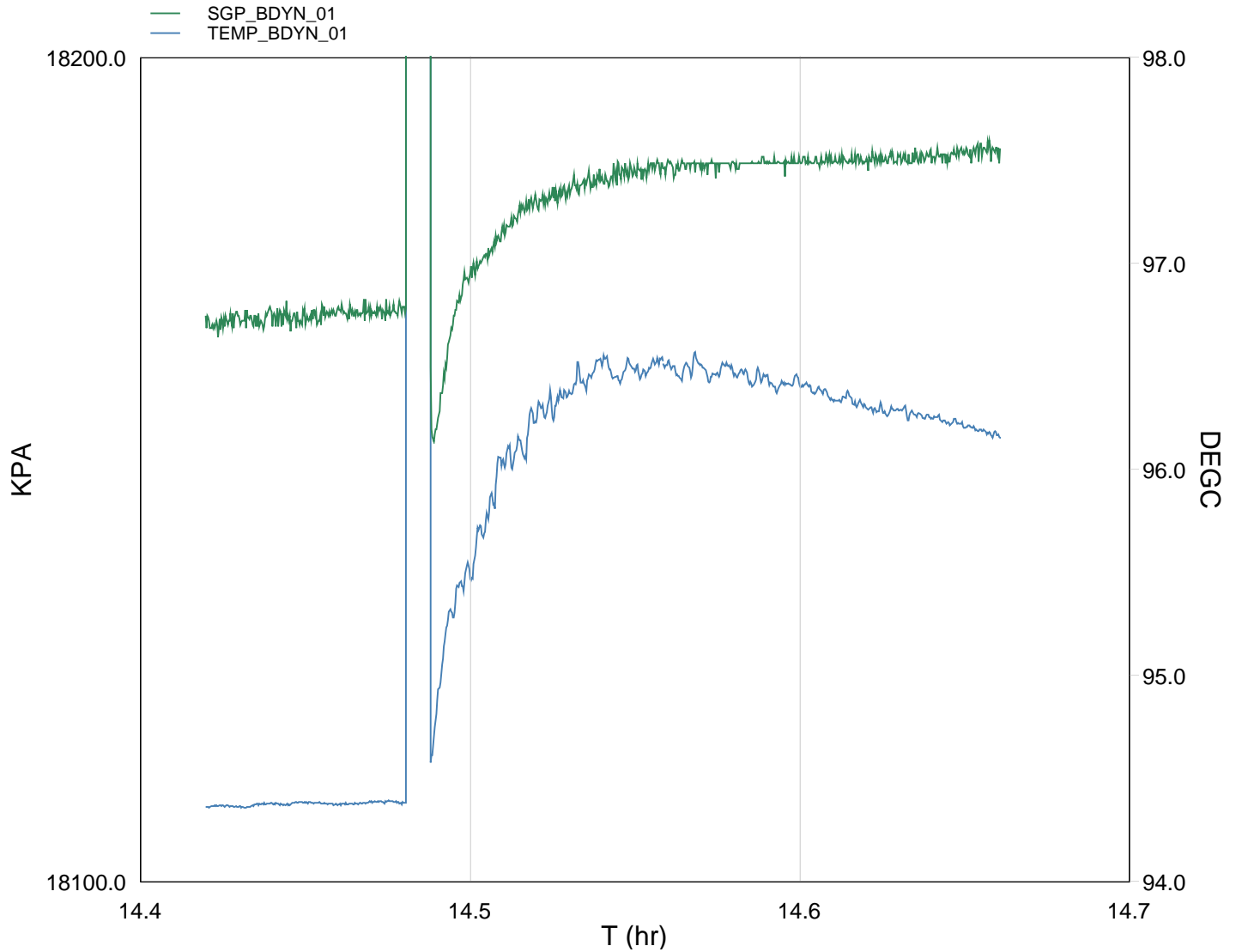
Input DLIS Files

DEFAULT FLIP_PERFO_052L PRODUCER 14-Aug-2007 13:03 3313.0 M 3256.2 M

Output DLIS Files

DEFAULT PERFO_053PUP FN:28 PRODUCER 14-Aug-2007 13:05

MAXIS Field Log



TIME	TEMP_MWPT_S	SGPA_SL
------	-------------	---------

2880.0	201.86	2634.994
2940.0	201.88	2635.150
3000.0	201.88	2635.338
3060.0	201.90	2635.306
3120.0	202.29	2633.182
3180.0	204.40	2636.239
3240.0	205.33	2637.196
3300.0	205.73	2637.451
3360.0	205.70	2637.821
3420.0	205.64	2637.828
3480.0	205.57	2637.830
3540.0	205.48	2637.955
3600.0	205.35	2637.857
3660.0	205.27	2637.953

Schlumberger

Gun Shoot Pass

MAXIS Field Log

Company: Esso Australia Pty Ltd.

Well: B-12

Output DLIS Files

DEFAULT PERFO_039LUP FN:16 PRODUCER 13-Aug-2007 14:22 3323.2 M 3288.8 M

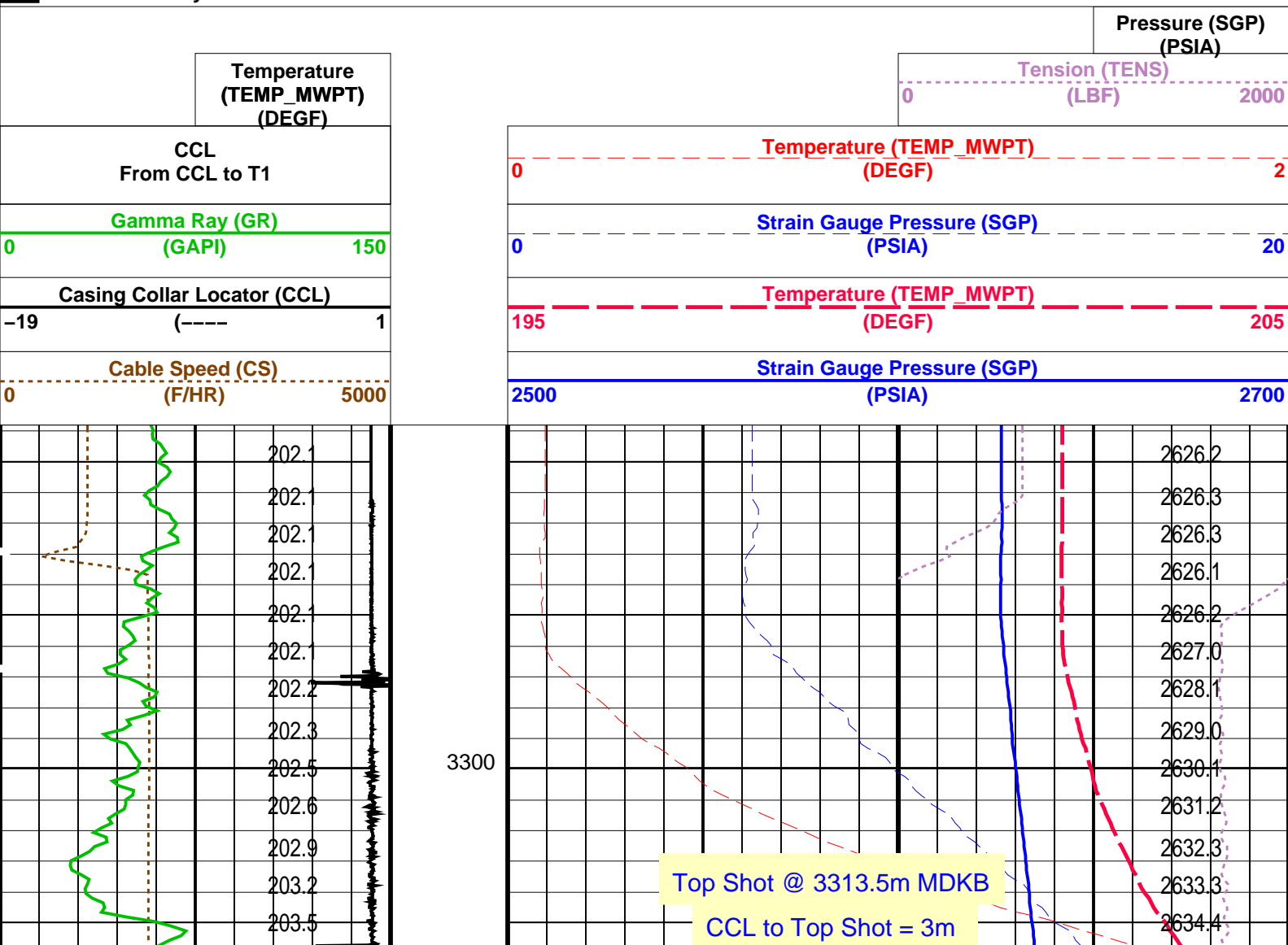
OP System Version: 14C0-302

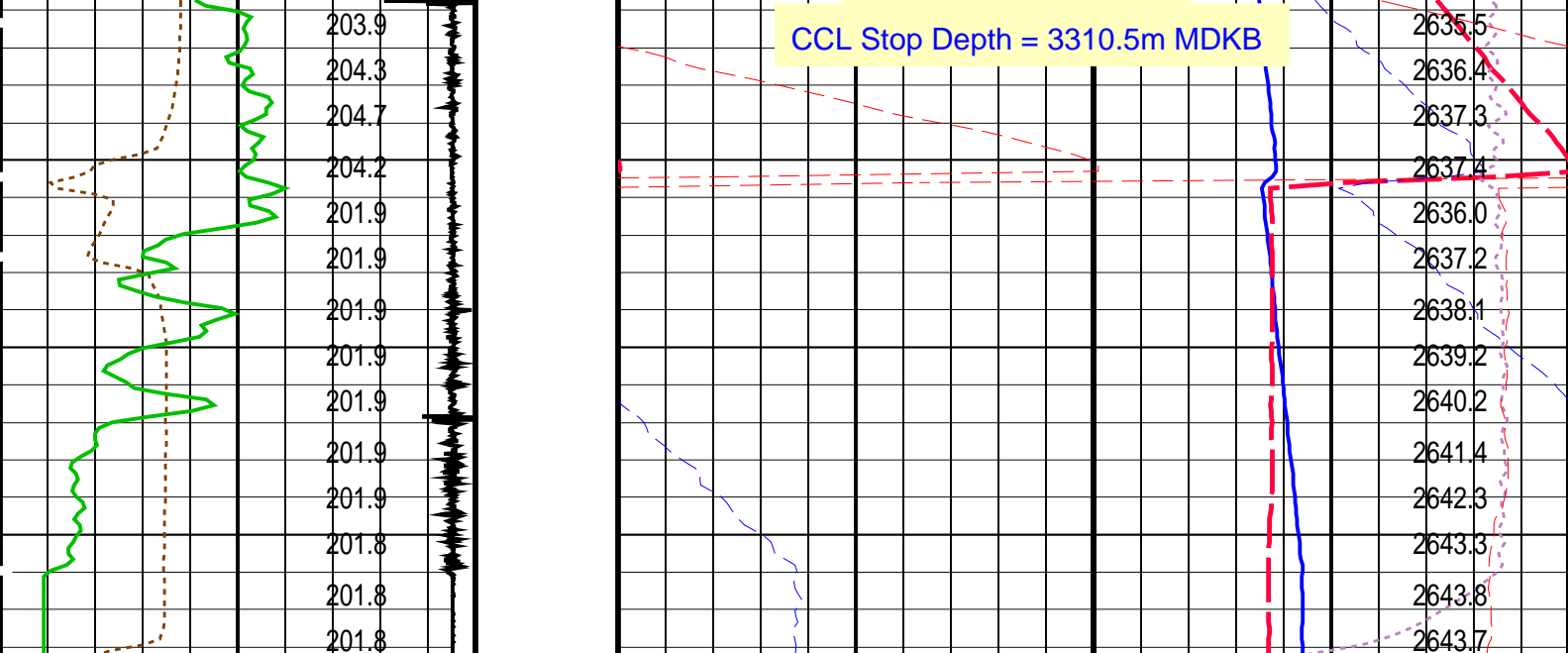
MCM

MWP_GUN 14C0-302 MWPT-CA 14C0-302
MWGT-AA 14C0-302

PIP SUMMARY

Time Mark Every 60 S





Cable Speed (CS) (F/HR)		0	5000
Casing Collar Locator (CCL)		-19	1
Gamma Ray (GR) (GAPI)		0	150
CCL From CCL to T1			
Temperature (TEMP_MWPT) (DEGF)			
Strain Gauge Pressure (SGP) (PSIA)		2500	2700
Temperature (TEMP_MWPT) (DEGF)		195	205
Strain Gauge Pressure (SGP) (PSIA)		0	20
Temperature (TEMP_MWPT) (DEGF)		0	2
Tension (TENS) (LBF)		0	2000
Pressure (SGP) (PSIA)			

PIP SUMMARY

Time Mark Every 60 S

Parameters

DLIS Name	Description	Value
MWPT-CA: MEASUREMENT WHILE PERFORATING TOOL		
DEVI_FL_CORR	Deviation Angle for Flow Line Correction	0 DEG
FLD	Flow Line Density	1 G/C3
MWPT_NULL_SOURCE	MWPT NULL Temperature Source	TEMS
MWPT_NULL_TEMP	MWPT NULL Temperature	0.0 DEGC

Format: MWP Vertical Scale: 1:200 Graphics File Created: 13-Aug-2007 14:22

OP System Version: 14C0-302

MCM

MWP_GUN	14C0-302	MWPT-CA	14C0-302
MWGT-AA	14C0-302		

Output DLIS Files

DEFAULT PERFO_039LUP FN:16 PRODUCER 13-Aug-2007 14:22



Gun Correlation Pass

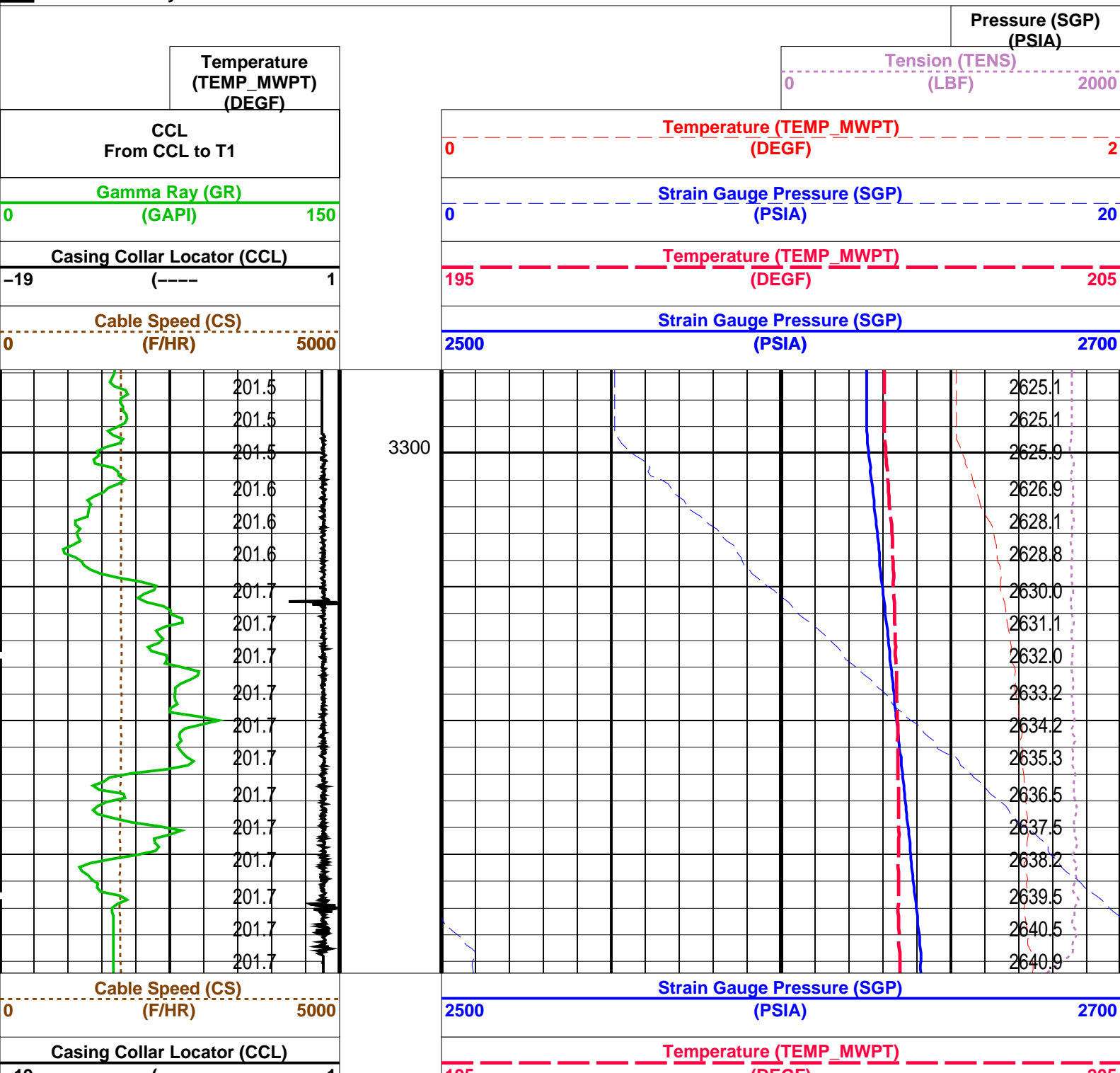
Well: B-12

Output DLIS Files						
DEFAULT	PERFO_038LUP	FN:15	PRODUCER	13-Aug-2007 14:16	3319.4 M	3296.9 M

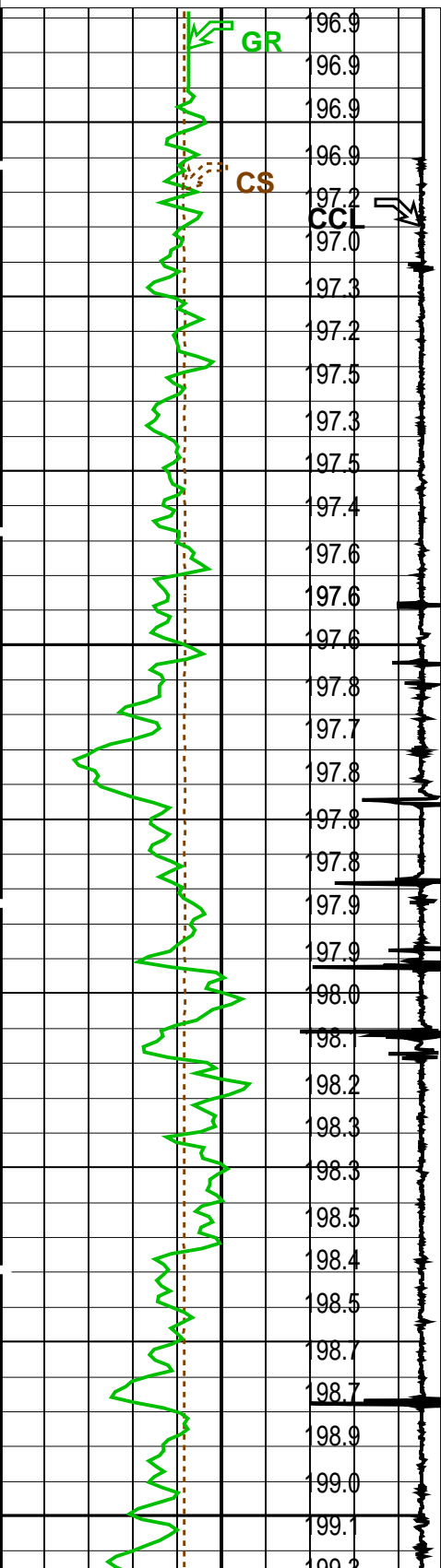
MCM

MWPT-CA 14C0-302

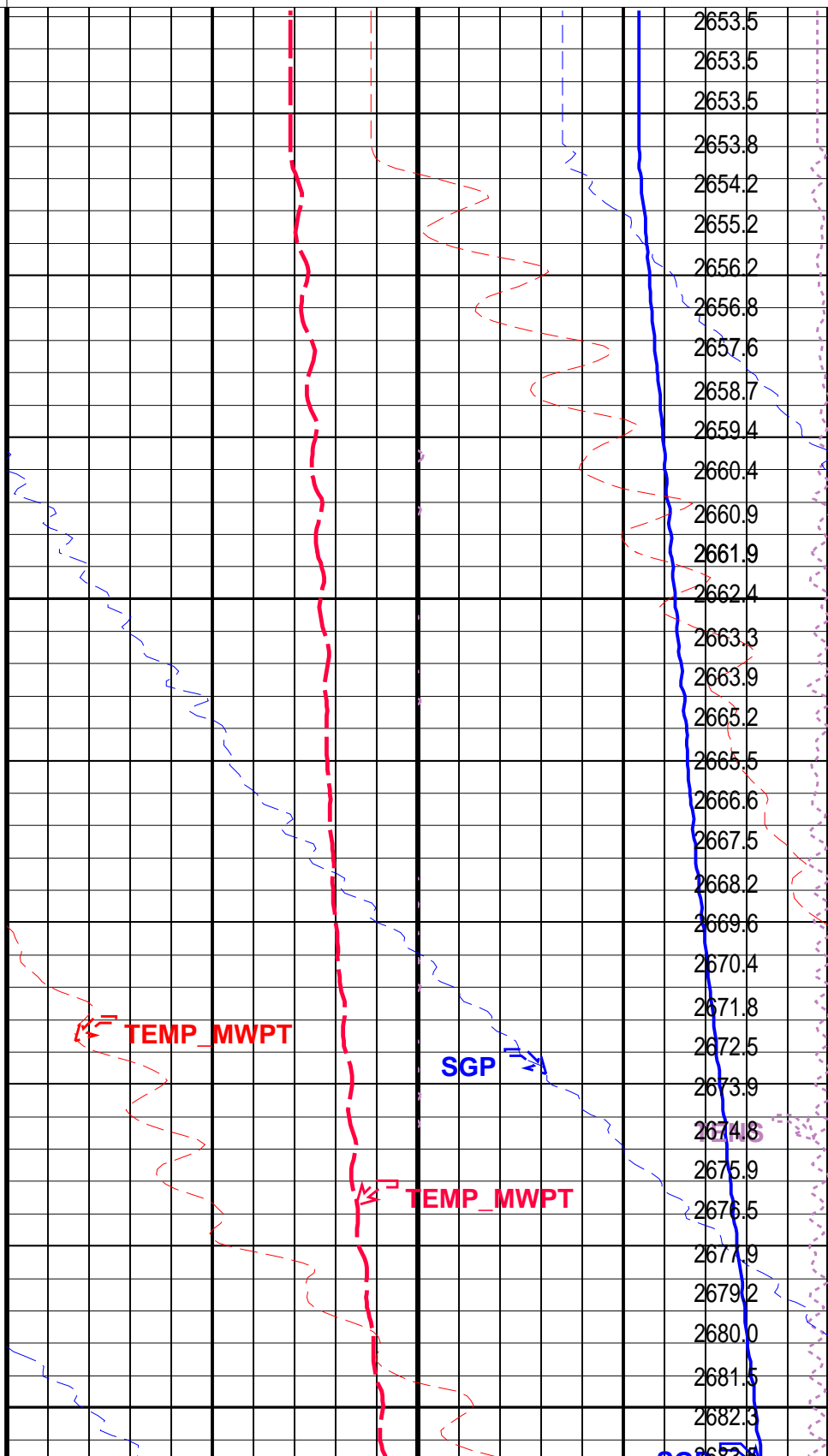
Time Mark Every 60 S

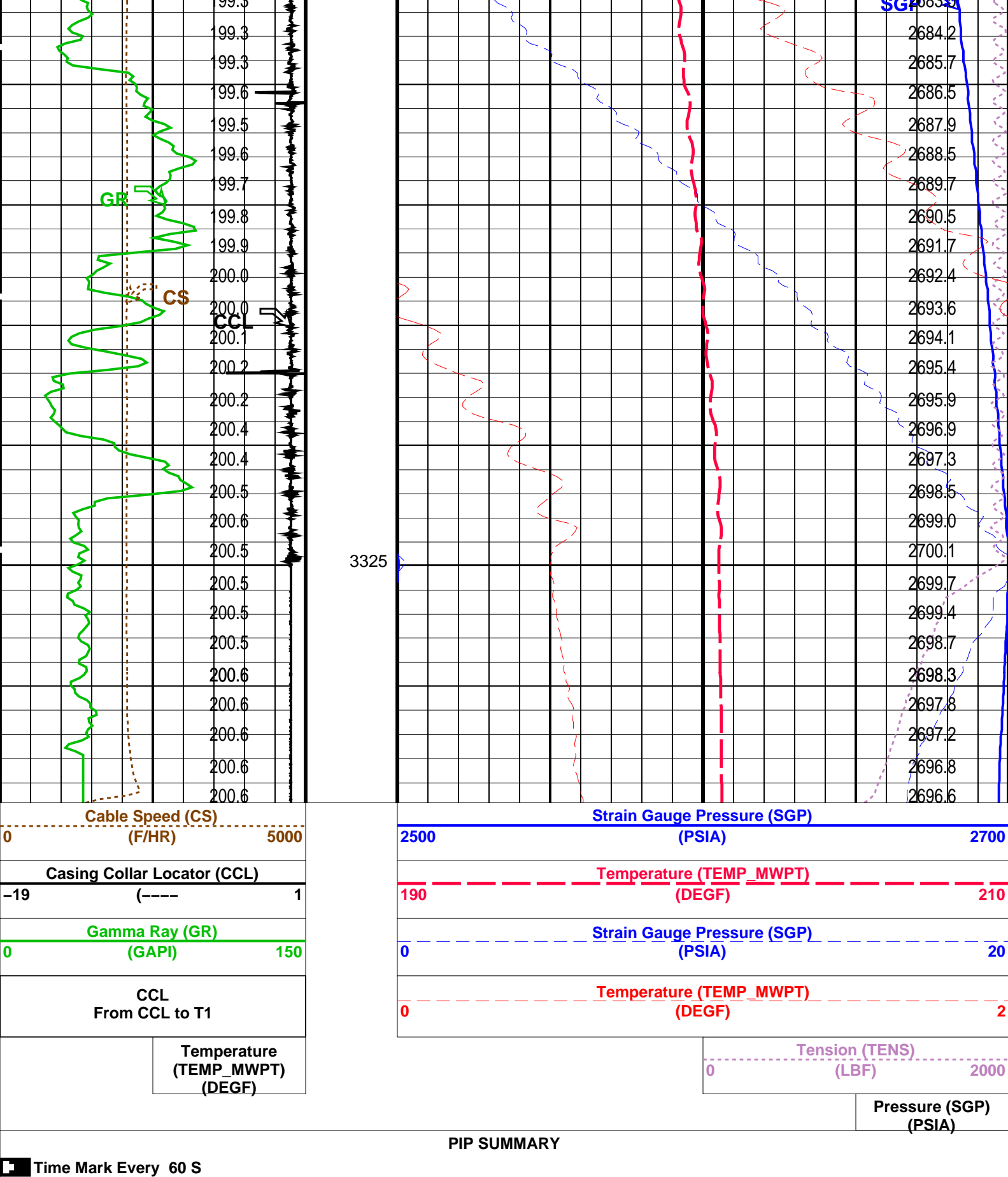


	(TEMP_MWPT) (DEGF)
CCL From CCL to T1	
Gamma Ray (GR) (GAPI)	
0	150
Casing Collar Locator (CCL)	
-19	1
Cable Speed (CS) (F/HR)	
0	5000



0	(TEMP_MWPT) (DEGF)	2000
Temperature (TEMP_MWPT) (DEGF)		
0	Strain Gauge Pressure (SGP) (PSIA)	20
Strain Gauge Pressure (SGP) (PSIA)		
190	Temperature (TEMP_MWPT) (DEGF)	210
Temperature (TEMP_MWPT) (DEGF)		
2500	Strain Gauge Pressure (SGP) (PSIA)	2700
Strain Gauge Pressure (SGP) (PSIA)		





Parameters		
DLIS Name	Description	Value
MWPT-CA: MEASUREMENT WHILE PERFORATING TOOL		
DEVI_FL_CORR	Deviation Angle for Flow Line Correction	0 DEG
FLD	Flow Line Density	1 G/C3
MWPT_NULL_SOURCE	MWPT NULL Temperature Source	TEMS
MWPT_NULL_TEMP	MWPT NULL Temperature	0.0 DEGC

DO PP		System and Miscellaneous Depth Offset for Playback Playback Processing		4.0 NORMAL		M	
Format: MWP		Vertical Scale: 1:200		Graphics File Created: 13-Aug-2007 11:57			
OP System Version: 14C0-302							
MCM							
MWPT-CA		14C0-302		MWGT-AA		14C0-302	
Input DLIS Files							
DEFAULT		PERFO_026LUP		FN:3 PRODUCER		13-Aug-2007 11:46 3330.9 M 3254.7 M	
Output DLIS Files							
DEFAULT		PERFO_028PUP		FN:5 PRODUCER		13-Aug-2007 11:57	
Company: Esso Australia Pty Ltd.							
Well: B-12							
Field: Bream B							
Rig: Crane / Prod4							
Country: Australia							
2 1/8" Phased Powerjet MWPT Perforation Record 7" HPI Plug Setting Record							

Schlumberger