



Company : Santos
Well : Netherby 1DW1
Interval : 1420.00 - 2533.12 meters
Created : 13/08/2008 2:02:52 AM

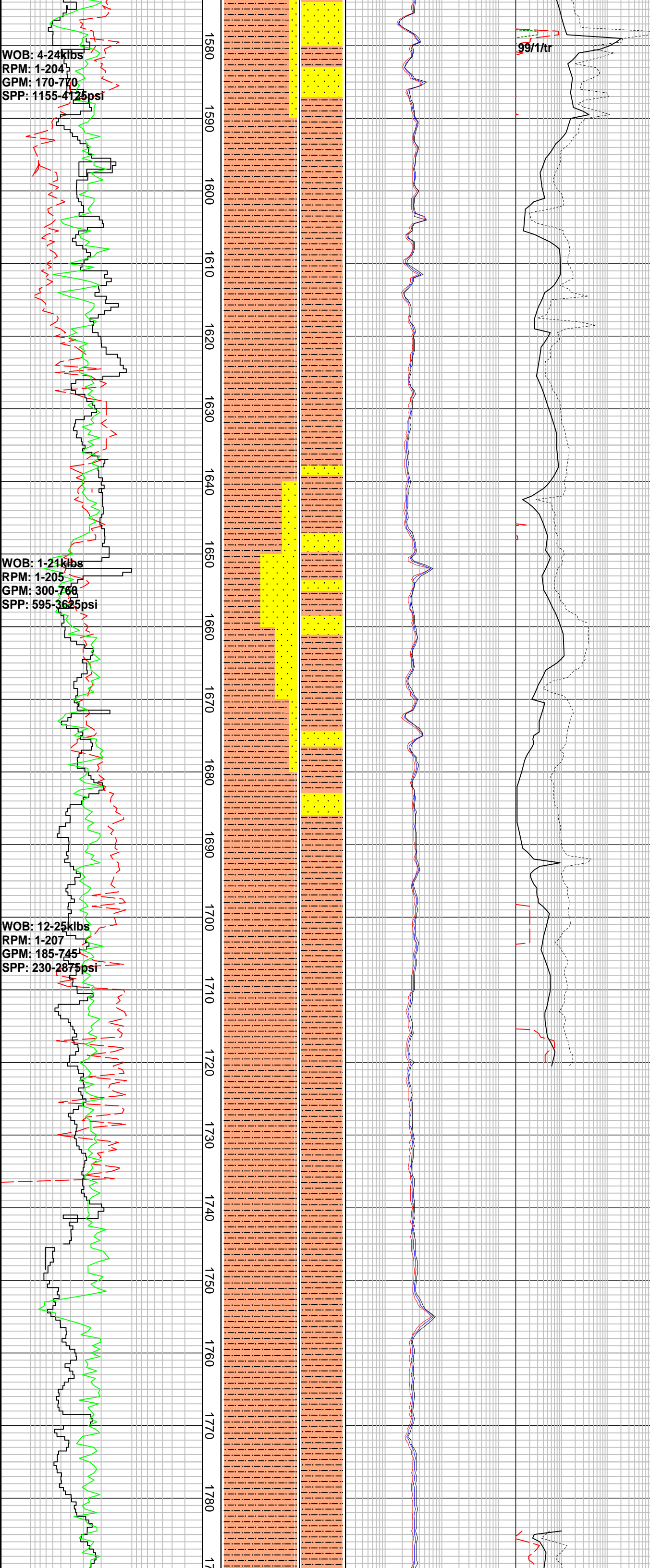


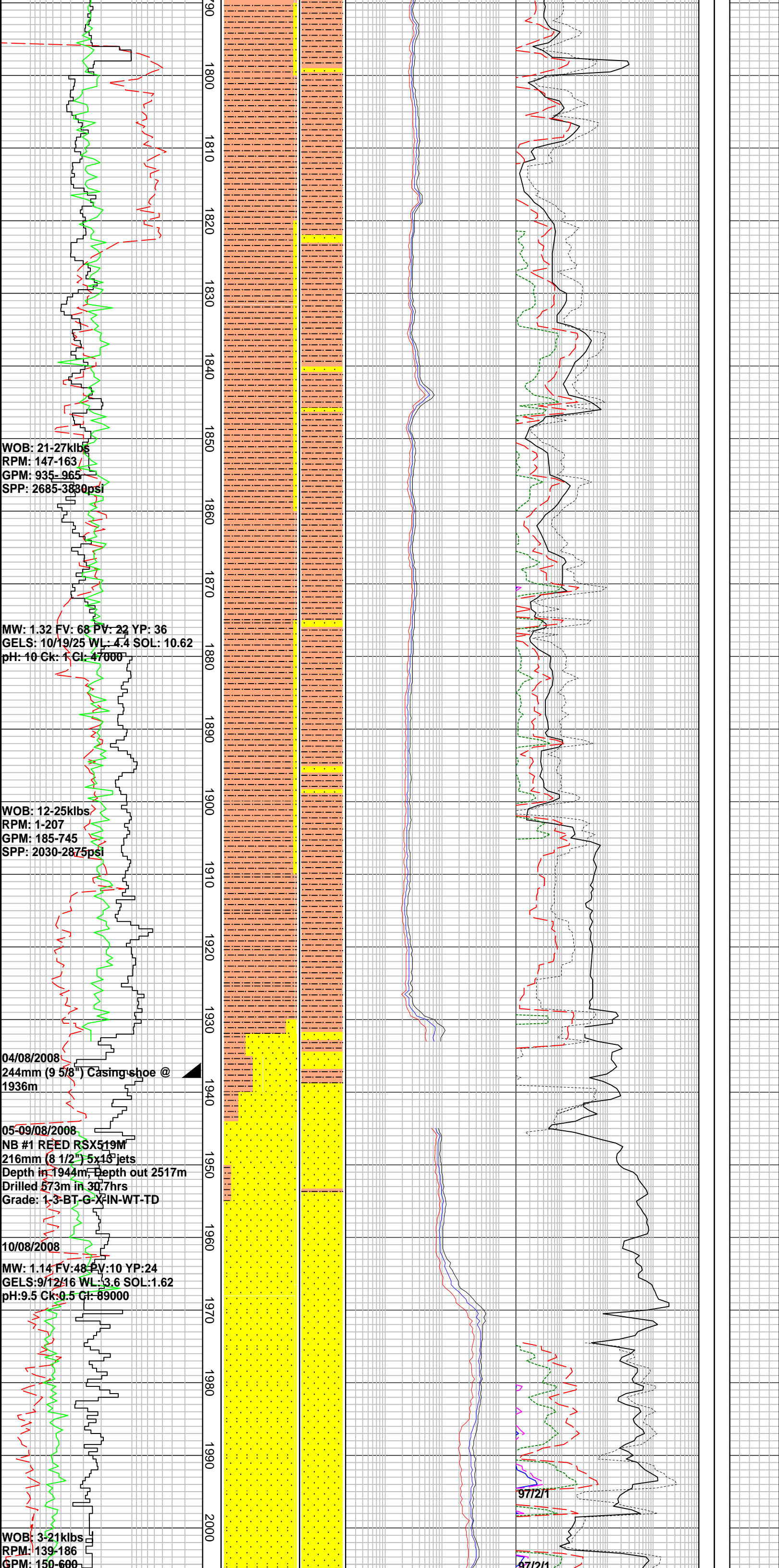
FORMATION EVALUATION LOG

WOB				ROP				Gamma				GAPI				MD meters 1:500	LITHOLOGY %	INTERPRETED LITHOLOGY	RESISTIVITY				CHROMATOGRAPH				DIRECT FLUORESCENCE	CUT FLUORESCENCE	CALC	REMARKS
10 20 30 40				200 20				50 100 150 200											Resistivity (shallow)		Total Gas									
																			2 20 200		1 10 100 1000									
																			OHMM		unit									
																			Resistivity (medium)		Methane									
																			2 20 200		Ethane									
																			OHMM		Propane									
																			Resistivity (deep)		i-Butane									
																			2 20 200		i-Pentane									
																			OHMM		n-Butane									
																			Resistivity (shallow)		n-Pentane									
																			2 20 200											
																			OHMM											
																			Resistivity (medium)											
																			2 20 200											
																			OHMM											
																			Resistivity (deep)											
																			2 20 200		100 1000 10000 100000									
																			OHMM		ppm									
																			2 20 200											
																			OHMM											

NB #1 HYCALOG RSX616M 311mm (12 1/4") 6x15 jets Depth in 1421m, Depth out 1944m Drilled 523m in 15.6hrs Grade 1-5-BT-G-X-IN-CT-TD															20																																																																																																																																																																																																																																																																																																																												</
---	--	--	--	--	--	--	--	--	--	--	--	--	--	--	----	--	--	--	--	--	--	--	--	--	--	--	--	--	--	--	--	--	--	--	--	--	--	--	--	--	--	--	--	--	--	--	--	--	--	--	--	--	--	--	--	--	--	--	--	--	--	--	--	--	--	--	--	--	--	--	--	--	--	--	--	--	--	--	--	--	--	--	--	--	--	--	--	--	--	--	--	--	--	--	--	--	--	--	--	--	--	--	--	--	--	--	--	--	--	--	--	--	--	--	--	--	--	--	--	--	--	--	--	--	--	--	--	--	--	--	--	--	--	--	--	--	--	--	--	--	--	--	--	--	--	--	--	--	--	--	--	--	--	--	--	--	--	--	--	--	--	--	--	--	--	--	--	--	--	--	--	--	--	--	--	--	--	--	--	--	--	--	--	--	--	--	--	--	--	--	--	--	--	--	--	--	--	--	--	--	--	--	--	--	--	--	--	--	--	--	--	--	--	--	--	--	--	--	--	--	--	--	--	--	--	--	--	--	--	--	--	--	--	--	--	--	--	--	--	--	--	--	--	--	--	--	--	--	--	--	--	--	--	--	--	--	--	--	--	--	--	--	--	--	--	--	--	--	--	--	--	--	--	--	--	--	--	--	--	--	--	--	--	--	--	--	--	--	--	--	--	--	--	--	--	--	--	--	--	--	--	--	--	--	--	--	--	--	--	--	--	--	--	--	--	--	--	--	--	--	--	--	--	--	--	--	--	--	--	--	----

SILTSTONE: m gy brn, occ
pl-m brn, sil i/p, mn^r carb
spks, occ calc incl, rr glauc
grs, mod hd-hd, mn^r v hd,
blky-sblky





1795-1894m Chromatograph data unreliable

Survey @ 1804.17m
Incl: 64.78deg Azi: 123.05deg

SILTSTONE: m brnsh gy, gy brn, loc aren, mnf carb spks, rr calc frags, rr f gr glauc, sft frm, mod hd i/p, blkylky

Survey @ 1832.79m
Incl: 69.15deg Azi: 123.30deg

SANDSTONE: trnsl, lt gy, v lt brn, vf-f gr, sbang-sbrnd, wl srtd, wk calc cmt, com off wh argil mt, tr vf grs glauc, fri, pr vis por, no fluor

Survey @ 1860.88m
Incl: 73.78deg Azi: 123.07deg

Survey @ 1889.08m
Incl: 77.80deg Azi: 122.38deg

SILTSTONE: dk grnsh gy, m dk gy, m dk brnsh gy, vf aren, rr f carb spks, abdt f grs glauc, frm, blkylky

SILTSTONE: m-dk brnsh gy, m-dk grnsh gy, argil, loc vf aren, rr f carb spks, mnf com f grs glauc, frm, blkylky

SANDSTONE: off wh, clr-trnsl, vf-f, mod wl srt, sbrnd, wk sil cmt, com-abdt off wh argil mt, occ carb spks & mnf frags frm-fri, com rock flour, v pr vis por, pr inf por, no fluor

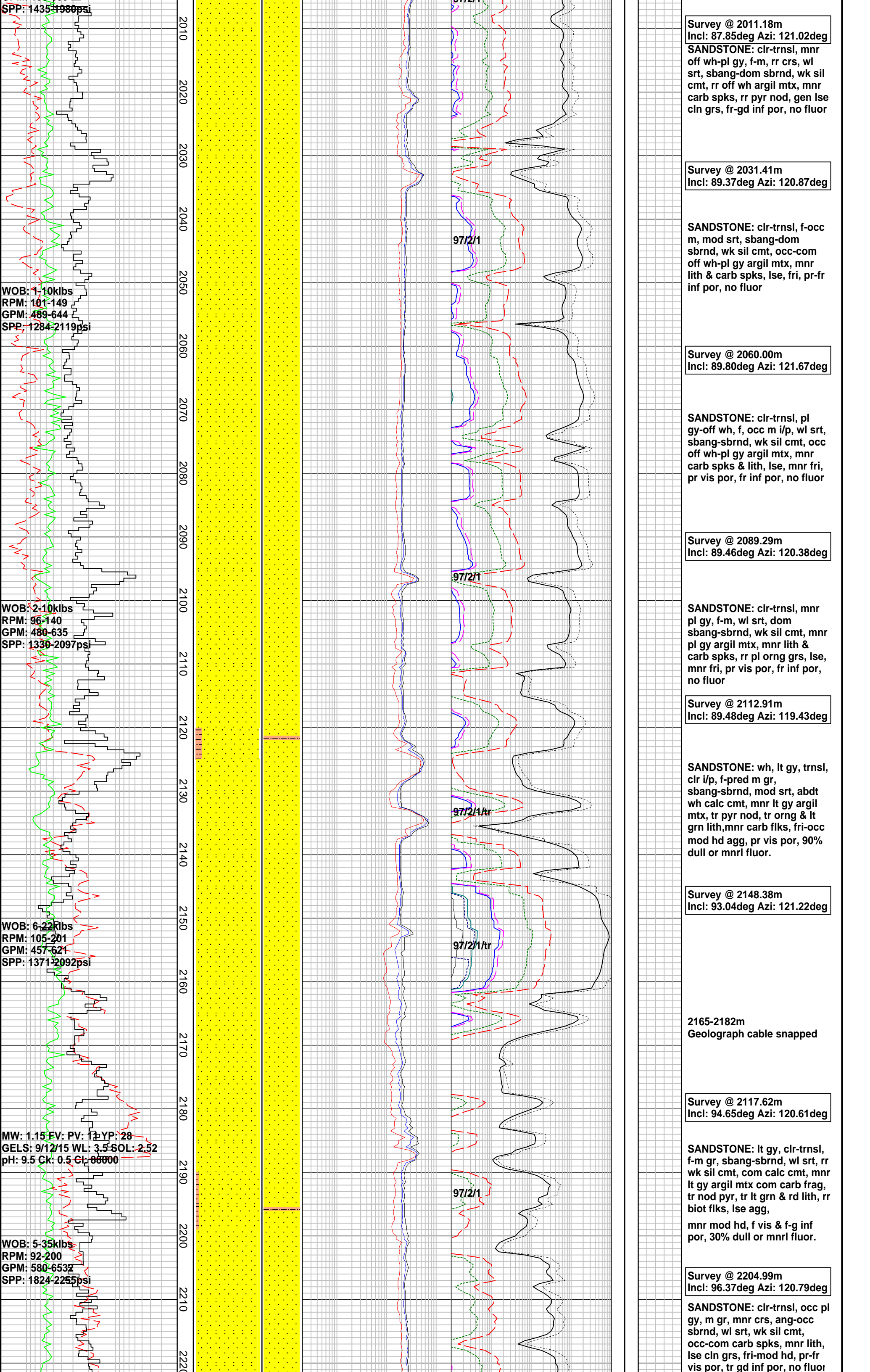
Netherby 1DW1 reached 311m (12 1/4") hole section TD @ 1944m MDRT on 04/08/2008

1946-1974m Chromatograph data not recorded

SANDSTONE: pl gy, clr-trnsl, f-m, occ crs-v crs, mod srtd, sbang-sbrnd, mod sil cmt, occ off wh argil mt, com-abdt carb spks, rr pyr, mnf lith, occ fri, pr-fr vis por, no fluor

Survey @ 1973.95m
Incl: 83.6deg Azi: 122.37deg

SANDSTONE: clr-trnsl, mnf pl gy, f-m, wl srt, ang-sbang, mnf sbrnd, wk sil cmt, rr off wh argil mt, occ carb spks & frags, mnf lith, lse clr grs, fr-gd inf por, no fluor



11/08/2008

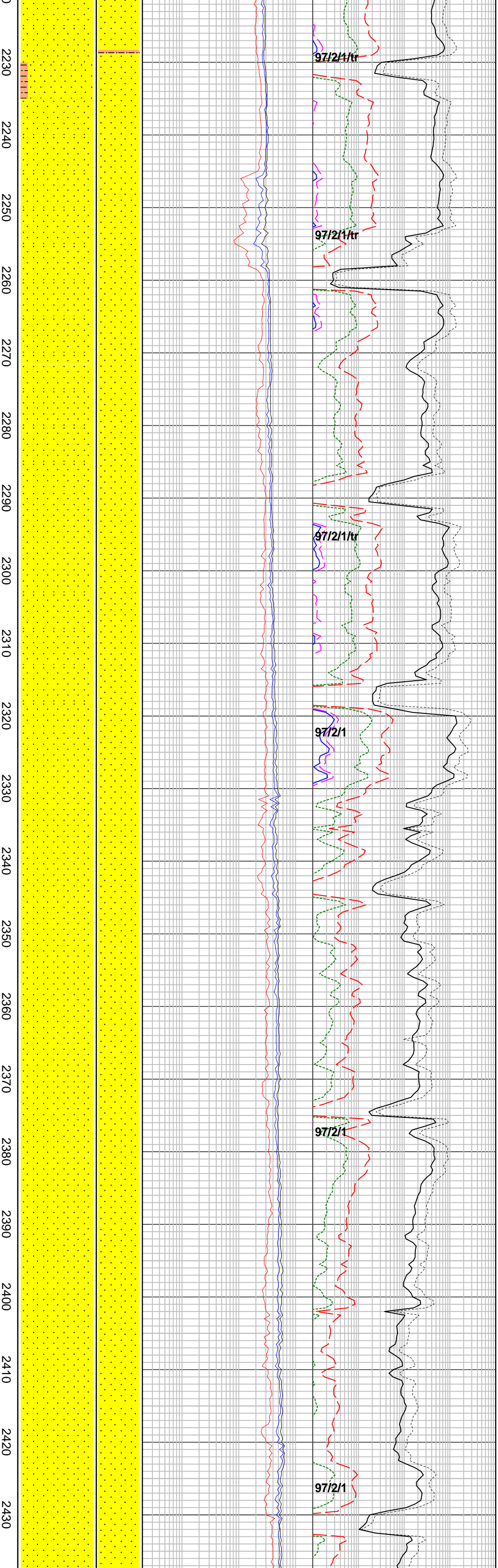
WOB: 15-26klbs
RPM: 101-140
GPM: 270-640
SPP: 2035-2115psi

WOB: 10-26klbs
RPM: 104-148
GPM: 150-675
SPP: 1350-2170psi

WOB: 10-27klbs
RPM: 85-154
GPM: 475-636
SPP: 1522-2230psi

WOB: 10-25klbs
RPM: 79-159
GPM: 610-620
SPP: 2144-2260psi

MW: 1.15 FV: 45 PV: 11 YP: 34
GELS: 10/14/16 WF: 3.6 SOL: 2.59
pH: 9.0 Cr: 0.5 Cr: 88000



SANDSTONE: clr-trnsl, off wh, vf-m gr, sbang-sbrnd, wl srt, occ-com off wh argil mtx, occ carb spks-frag, mn r orng lith, lse cln gr, pr-fr vis por, fr-gd inf por, no fluor

Survey @ 2262.48m
Incl: 94.85deg Azi: 119.65deg

SANDSTONE: clr-trnsl, occ pl orng, f-m, occ vf, pr srt, sbang-dom sbrnd, wk sil cmt, occ off wh argil mtx, mn r lith, occ carb spks, lse, gd inf por, no fluor

Survey @ 2291.13m
Incl: 95.36deg Azi: 119.68deg

SANDSTONE: clr-trnsl, f-dom m, mod wl srt, ang-sbrnd, wk sil cmt, rr off wh argil mtx, mn r carb spks, lse, gd inf por, no fluor

Survey @ 2321.31m
Incl: 95.04deg Azi: 119.36deg

SANDSTONE: clr-trnsl, f-m, rr vf, wl srt, sbang-sbrnd, occ rnd, wk sil cmt, mn r off wh argil mtx, occ carb spks, lse cln grs, fr-gd inf por, no fluor

Survey @ 2350.31m
Incl: 93.87deg Azi: 118.72deg

SANDSTONE: clr-trnsl, lt gy, f-m gr, mn r crs, mod srtd, sbang-pred sbrnd rr wk sil cmt, mn r off wh argil mtx, mn r carb frag, tr lith, pred lse cln qtz gr, gd inf por, no fluor

Survey @ 2378.82m
Incl: 94.18deg Azi: 118.17deg

SANDSTONE: clr-trnsl, lt gy, f-m gr, wl srt, sbang-pred sbrnd, tr wk sil cmt, mn r lt gy argil mtx, rr carb flk, tr lith, pred lse cln qtz gr, tr fri agg, f-gd inf por, no fluor

Survey @ 2407.67m
Incl: 94.16deg Azi: 117.99deg

SANDSTONE: clr-trnsl, lt gy, f-pred m gr, wl srtd, sbang-pred sbrnd, tr wk sil cmt, tr lt gy argil, mn r mtx com carb flk, tr lith, pred lse cln qtz gr, gd inf por, no fluor

Survey @ 2436.52m
Incl: 94.22deg Azi: 117.82deg

