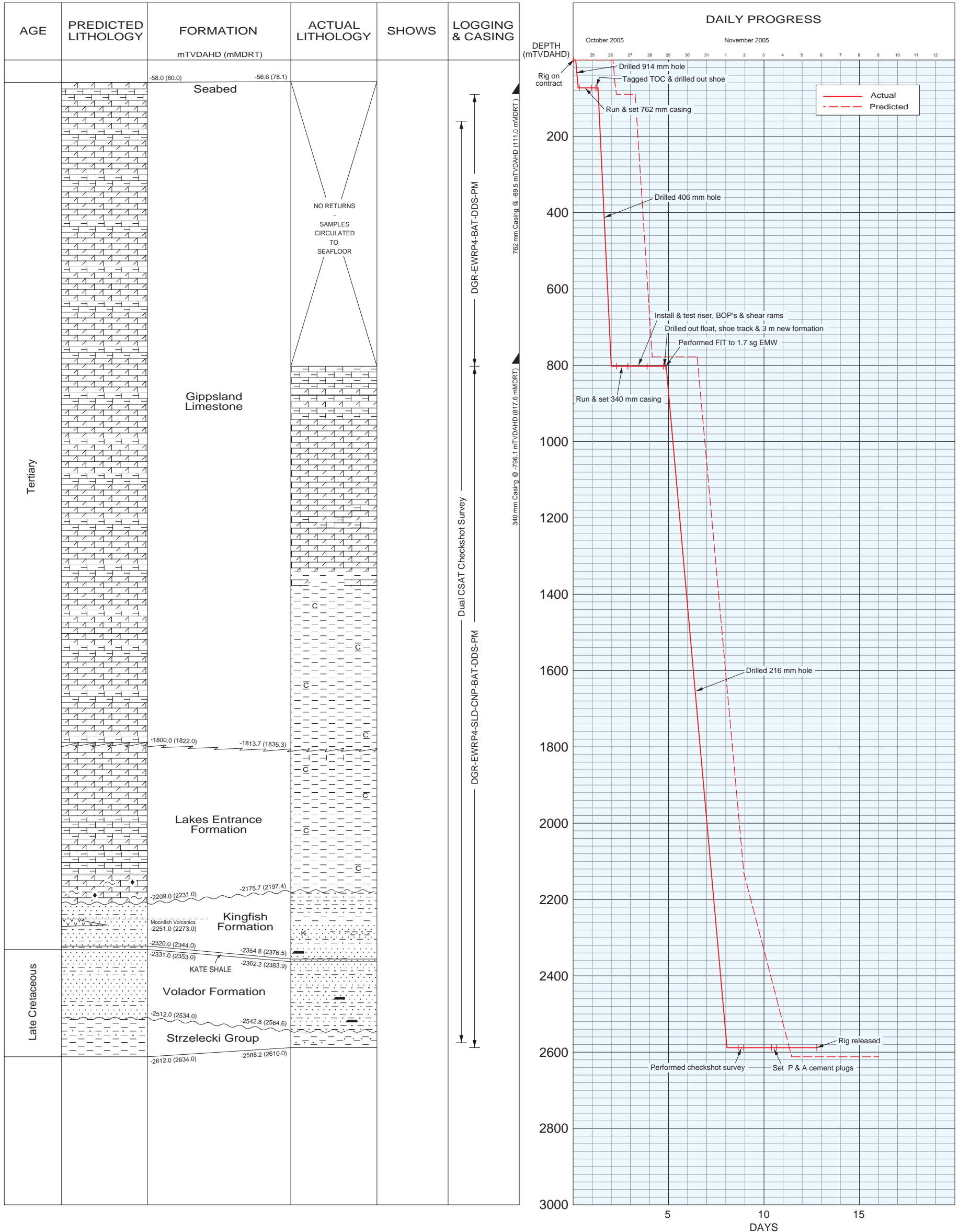


FUR SEAL-1



LATITUDE : 38° 07' 47.91" S UTM: 5,779,136.7 mN
LONGITUDE : 148° 09' 08.44" E 600,995.5 mE

SEISMIC LINE :	IL 3195, XL 7787
SPUD DATE :	24 October 2005, 03:00 hrs
REACHED T.D.:	1 November 2005, 01:30 hrs
ELEVATION R.T.:	21.5 m above AHD
WATER DEPTH :	56.6 m below AHD
SEA BED :	78.1 m below R.T.
STATUS :	Plugged & Abandoned, Dry Hole
RIG :	Ocean Patriot
RIG RELEASED :	5 November 2005, 18:00 hrs



VIC/P-54
GIPPSLAND BASIN

FUR SEAL-1

PREDICTED vs ACTUAL SECTION & WELL HISTORY

Author : WCR	Date : June 2007
Drawn : Perth Exploration Dept.	Plan No. ASu9460

Figure 4