

Company: Esso Australia Pty Ltd.

Well: B-15

Field: Bream B

Rig: Crane / Prod4

Country: Australia

2 1/8" Phased Powerjet
MWPT Perforation
7" HPI Plug Setting Record

Rig: Crane / Prod4
Field: Bream B
Location: Gippsland
Well: B-15
Company: Esso Australia Pty Ltd.

LOCATION		
Gippsland	Elev.: K.B. 41.7 m	
Basin	G.L. -61 m	
Bass Strait	D.F. 41.7 m	
Permanent Datum:	M.S.L.	Elev.: 0 m
Log Measured From:	D.F.	41.7 m above Perm. Datum
Drilling Measured From:	D.F.	
State: Victoria	Max. Well Deviation 45 deg	Longitude 148°06'15.37"E
		Latitude 038°35'40.34S

Logging Date	7-Aug-2007
Run Number	1 thru 3
Depth Driller	2485 m
Schlumberger Depth	2483 m
Bottom Log Interval	2483 m
Top Log Interval	2375 m
Casing Fluid Type	Production Fluids
Salinity	
Density	
Fluid Level	1252 m
BIT/CASING/TUBING STRING	
Bit Size	8.500 in
From	
To	
Casing/Tubing Size	7.000 in
Weight	26 lbn/ft
Grade	L-80
From	21 m
To	2653 m
Maximum Recorded Temperatures	211 degF
Logger On Bottom	7-Aug-2007
Unit Number	889
Recorded By	G Wright,S Gilbert.
Witnessed By	G Rimmer,B Robinson.

PVT DATA		Run 1
Oil Density		
Water Salinity		
Gas Gravity		
Bo		
Bw		
1/Bg		
Bubble Point Pressure		
Bubble Point Temperature		
Solution GOR		
Maximum Deviation	45 deg	
CEMENTING DATA		
Primary/Squeeze	Primary	
Casing String No		
Lead Cement Type		
Volume		
Density		
Water Loss		
Additives		
Tail Cement Type		
Volume		
Density		
Water Loss		
Additives		
Expected Cement Top		
Logging Date		
Run Number		
Depth Driller		
Schlumberger Depth		
Bottom Log Interval		
Top Log Interval		
Casing Fluid Type		
Salinity		
Density		
Fluid Level		
BIT/CASING/TUBING STRING		
Bit Size		
From		
To		
Casing/Tubing Size		
Weight		
Grade		
From		
To		
Maximum Recorded Temperatures		
Logger On Bottom		
Unit Number		
Recorded By		
Witnessed By		

DEPTH SUMMARY LISTING

Date Created: 2-AUG-2007 14:33:34

Depth System Equipment

Depth Measuring Device	Tension Device	Logging Cable
Type: IDW-EB Serial Number: 6373 Calibration Date: 04-Jan-2007 Calibrator Serial Number: 9 Calibration Cable Type: 2-32ZT Wheel Correction 1: -2 Wheel Correction 2: -4	Type: PSDS/OSDS Serial Number: 325357 Calibration Date: 24-Jul-2007 Calibrator Serial Number: 1174 Calibration Gain: 0.89 Calibration Offset: 230.00	Type: 2-32ZT Serial Number: 25525 Length: 6299.91 M Conveyance Method: Wireline Rig Type: Rigless

Depth Control Parameters

Log Sequence:	Subsequent Log In the Well
Reference Log Name:	ExxonMobil Correlation Log
Reference Log Run Number:	1
Reference Log Date:	03-Jun-2005

Depth Control Remarks

1. IDW used as primary depth control.
2. Z-chart used as back-up.
3.
4.
5.
6.

DISCLAIMER

THE USE OF AND RELIANCE UPON THIS RECORDED-DATA BY THE HEREIN NAMED COMPANY (AND ANY OF ITS AFFILIATES, PARTNERS, REPRESENTATIVES, AGENTS, CONSULTANTS AND EMPLOYEES) IS SUBJECT TO THE TERMS AND CONDITIONS AGREED UPON BETWEEN SCHLUMBERGER AND THE COMPANY, INCLUDING: (a) RESTRICTIONS ON USE OF THE RECORDED-DATA; (b) DISCLAIMERS AND WAIVERS OF WARRANTIES AND REPRESENTATIONS REGARDING COMPANY'S USE OF AND RELIANCE UPON THE RECORDED-DATA; AND (c) CUSTOMER'S FULL AND SOLE RESPONSIBILITY FOR ANY INFERENCE DRAWN OR DECISION MADE IN CONNECTION WITH THE USE OF THIS RECORDED-DATA.

OTHER SERVICES1
OS1: None.
OS2:
OS3:
OS4:
OS5:

REMARKS: RUN NUMBER 1
Log correlated to ExxonMobil composite Log supplied with logging program.
Maximum well deviation = 45 degrees at 1424m MDKB.
Objectives: Perforate the interval 2468.6m 2472m MDKB
using 2 1/8" 45 deg Phased Powerjet guns . Set 7" HPI PSP Plug with
Top of Seal @ 2480m MDKB .
SBHT: 210 degf SBHP: 2652 psia HUD: 2483m MDKB
PSP Plug Top of Seal = 2480m MDKB
CCL to Top of Seal = 10 m

CCL to Top of Seal = 10 m					
CCL Stop Depth = 2470m MDKB					
Gun#1					
Top Shot @ 2468.6m MDKB					
CCL to Top Shot= 4.3 m					
CCL Stop Depth= 2464.3 m MDKB					
Crew : Andrew Hall & John Light					
6 CCL's couldn't be logged for the Plug Correlation Due to the EOT .					
RUN 1 SERVICE ORDER #: AUSL0748949 PROGRAM VERSION: 14C0-302 FLUID LEVEL: 1252 m					
LOGGED INTERVAL	START	STOP	LOGGED INTERVAL	START	STOP
EQUIPMENT DESCRIPTION					
RUN 1			RUN 2		
SURFACE EQUIPMENT			SURFACE EQUIPMENT		
MWPM-. 3000			WITM (SHM)		
DOWNHOLE EQUIPMENT			DOWNHOLE EQUIPMENT		
AH-SWBS-B 731 AH-SWBS-B 731 12.69			AH-SWBS-B AH-SWBS-B 763 16.97		
AH-SWBS-B 761 AH-SWBS-B 761 12.01			MH-SWHS-A MH-SWHS-A 726 16.27		
AH-SWBS-B 762 AH-SWBS-B 762 11.32			CCL-L 4191 Tension CCL CCL-L 4191 15.88		
AH-SWBS-B 763 AH-SWBS-B 763 10.63			AH-HPI Electro-Hydrostatic Setting Tool AH-HPI Electro-Hydrostatic Setting Tool 15.42		
MH-SWHS-A 726 MH-SWHS-A 726 9.95					
AH-124 1001 9.62					
MWGT-AA 19 MWPG-AA 19 MWGH-AA 19 9.41					
MWPT-CA 94 MWPH-AA 94 MWPS-AA 94 8.44					
CCL SMWP Pres SMWP Temp Tension 2.41					
AH-Flex Joint 41 AH-Flex Joint 41 5.62					
AH-122 8 5.06					

AH-SAH-G 1035
AH-SAH-G 1035

MPD-MB 268
MPD-MB 268

AH-ESIC 4100821
AH-ESIC 4100821

MWP_GUN
GUN-3.4mtr 2 1/8" Powerjet Gun 1

4.96

4.50

3.96

3.51

SHM_GUN
GUN-2.13" HPI Long Life PSP Plug for 7" casing

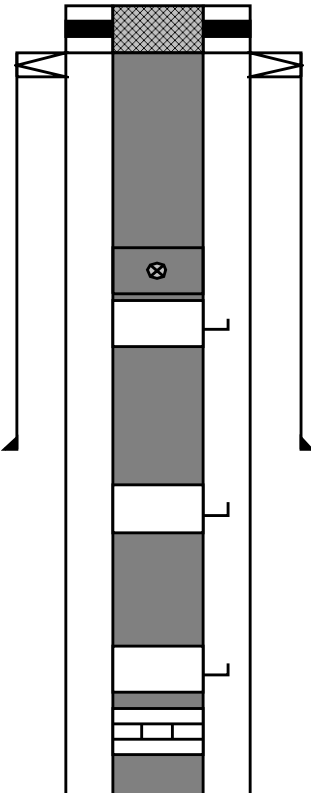
3.00

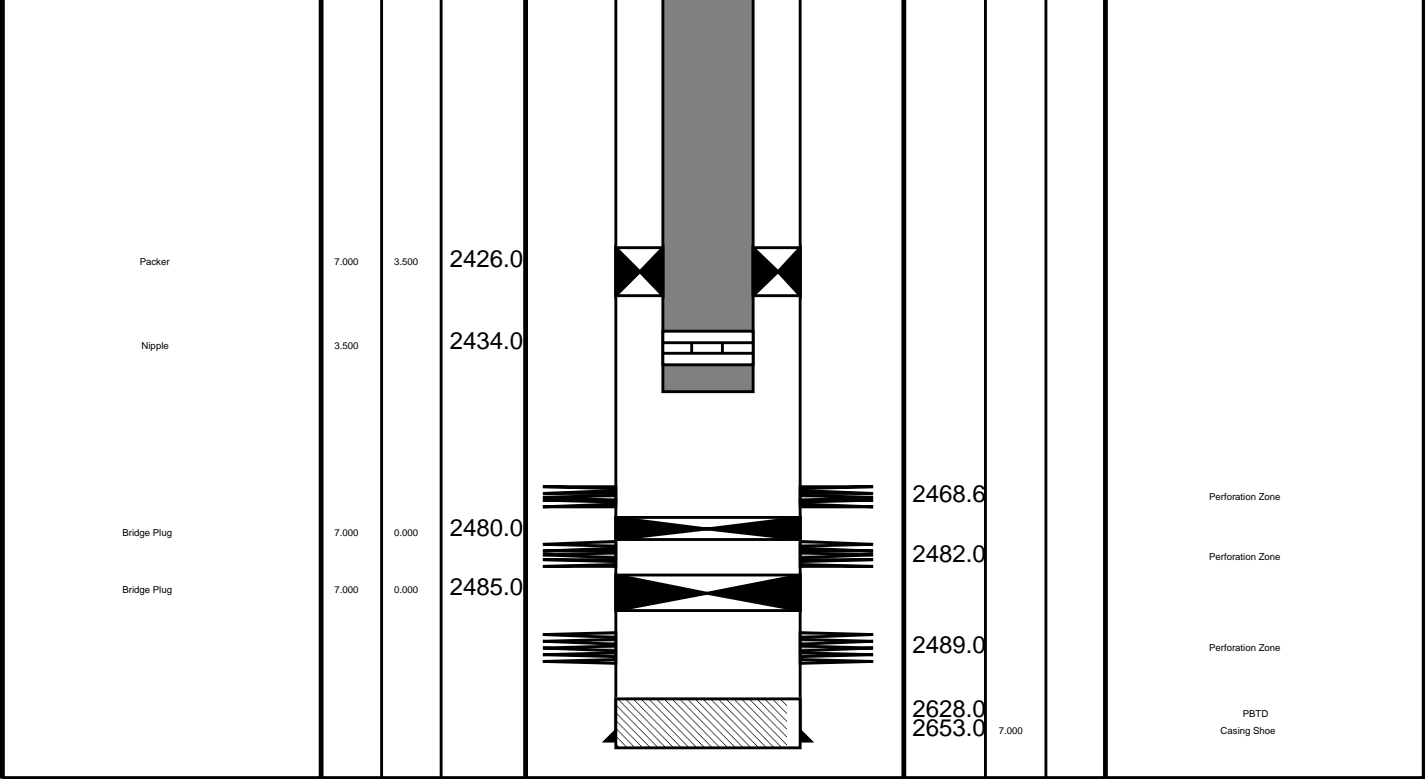
TOOL BOTTOM

MAXIMUM STRING DIAMETER 2.13 IN
MEASUREMENTS RELATIVE TO TOOL ZERO
ALL LENGTHS IN METERS

TOOL BOTTOM

MAXIMUM STRING DIAMETER 2.13 IN
MEASUREMENTS RELATIVE TO TOOL ZERO
ALL LENGTHS IN METERS

Production String	(m)		MD	Well Schematic	(m)			Casing String
	OD	ID			MD	OD	ID	
Tubing Hanger	7.000	3.500	21.0		20.6	10.750		Casing String
Tubing	3.500		20.2		21.0	7.000		Casing String
					21.0	10.750	7.000	Liner Hanger
Shutin Valve	3.500		451.0					
Gas Lift Mandrel	3.500		545.0					
Gas Lift Mandrel	3.500		870.0		726.0	10.750		Casing Shoe
Gas Lift Mandrel	3.500		1158.0					
Nipple	3.500		1174.0					



Job Events Summary

MAXIS Field Log

Schlumberger Job Event Summary

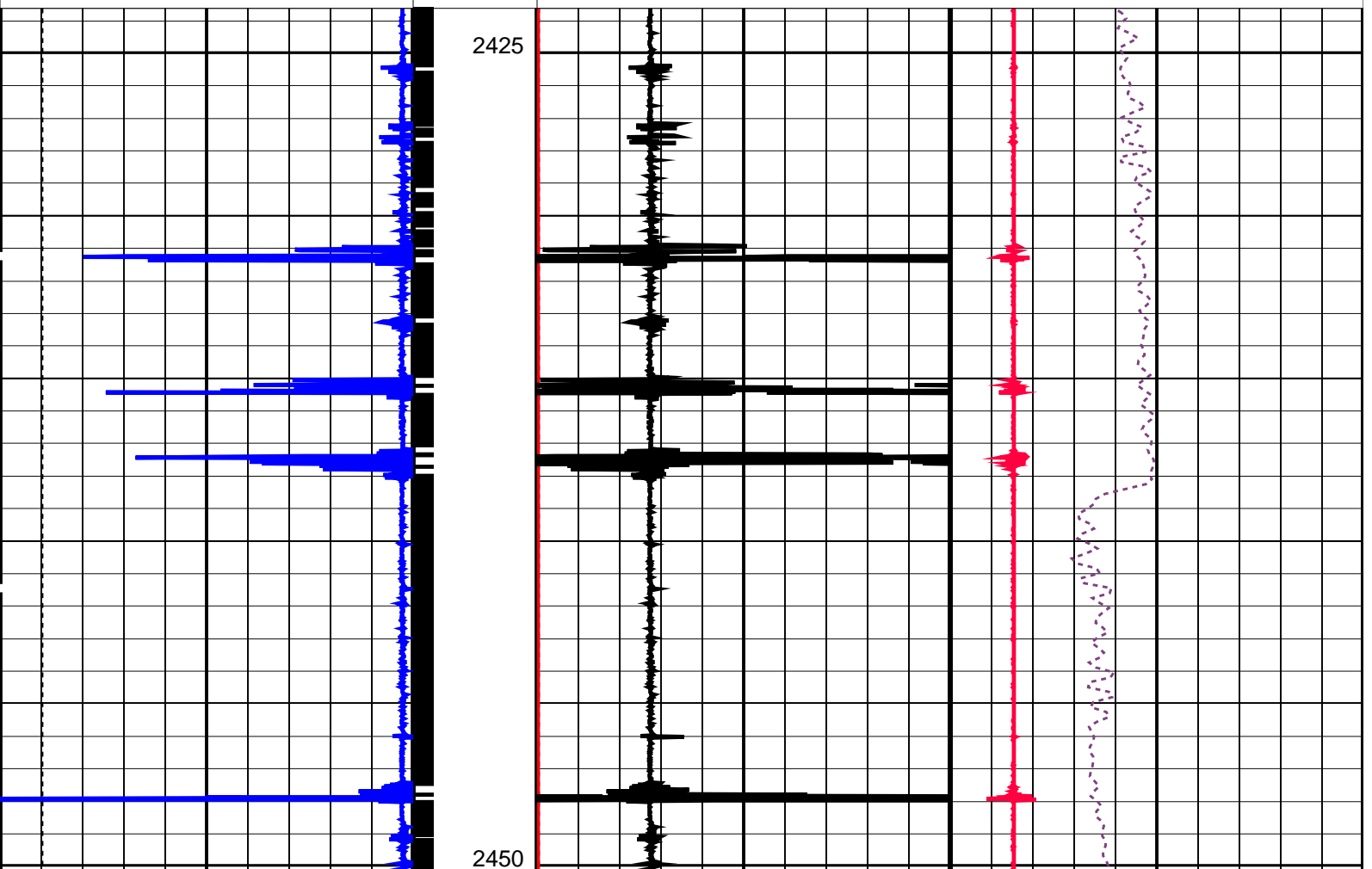
Time	Elapsed Time	Depth (M)	File		
Log Pass (up)	1-Aug-2007 14:45	000:06	2488.1 – 2426.2	PSP_007LUP	
Log Pass (up)	2-Aug-2007 11:16	000:06	2480.0 – 2443.7	PERFO_018LUP	
Log Pass (up)	2-Aug-2007 11:22	000:12	2474.1 – 2436.9	PERFO_019LUP	
Station Log	2-Aug-2007 11:25	000:06	2464.3 – 0.9	PERFO_020LTP	
Log Pass (up)	7-Aug-2007 9:56	000:06	2437.6 – 2396.6	PERFO_030LUP	
Log Pass (up)	7-Aug-2007 10:15	000:13	2472.1 – 2423.6	PERFO_033LUP	

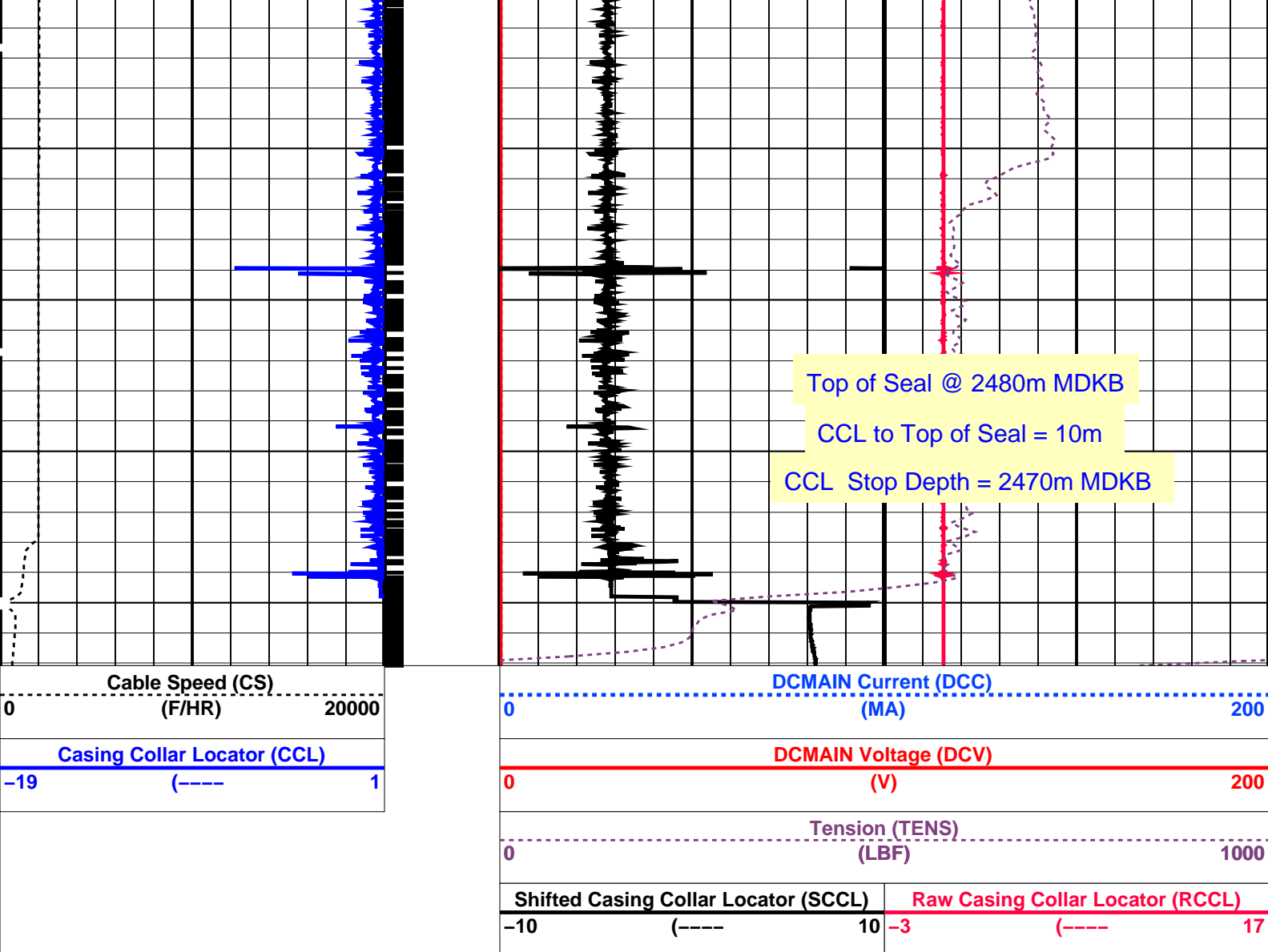


Output DLIS Files

OP System Version: 14C0-302

200





PIP SUMMARY

← Casing Collars

Time Mark Every 60 S

Parameters

DLIS Name	Description	Value
CCL-L: Casing Collar Locator		
CCLD	CCL reset delay	12 IN
CCLT	CCL Detection Level	0.3 V

Format: PERFO Vertical Scale: 1:200

Graphics File Created: 07-Aug-2007 10:15

OP System Version: 14C0-302
MCM

SHM_GUN 14C0-302 CCL-L 14C0-302

Output DLIS Files

DEFAULT PERFO_033LUP FN:32 PRODUCER 07-Aug-2007 10:15

Schlumberger

Plug Correlation Pass

Output DLIS Files

DEFAULT PERFO_030LUP FN:29 PRODUCER 07-Aug-2007 09:56 2437.6 M 2396.6 M

OP System Version: 14C0-302
MCM

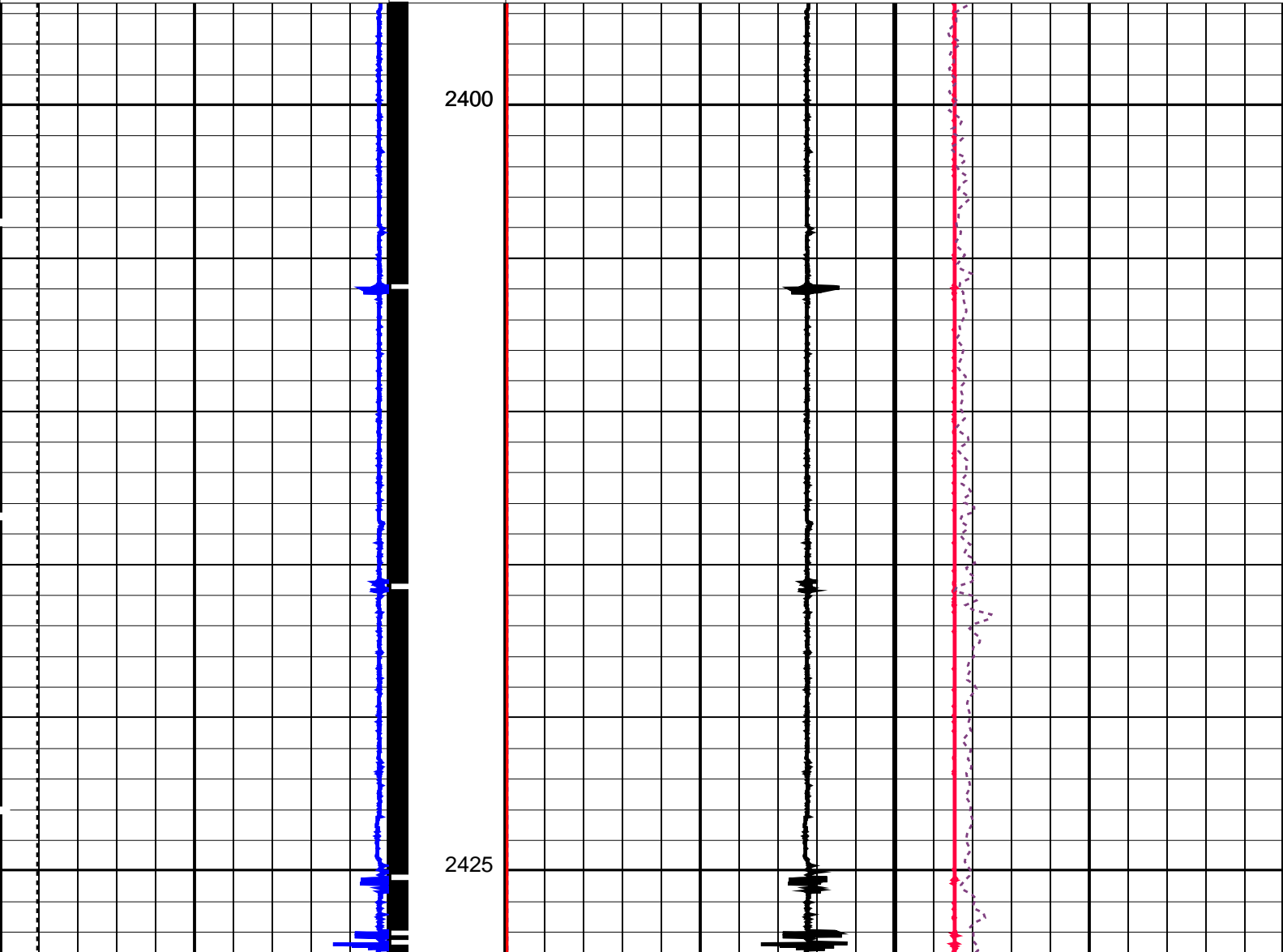
SHM_GUN 14C0-302 CCL-L 14C0-302

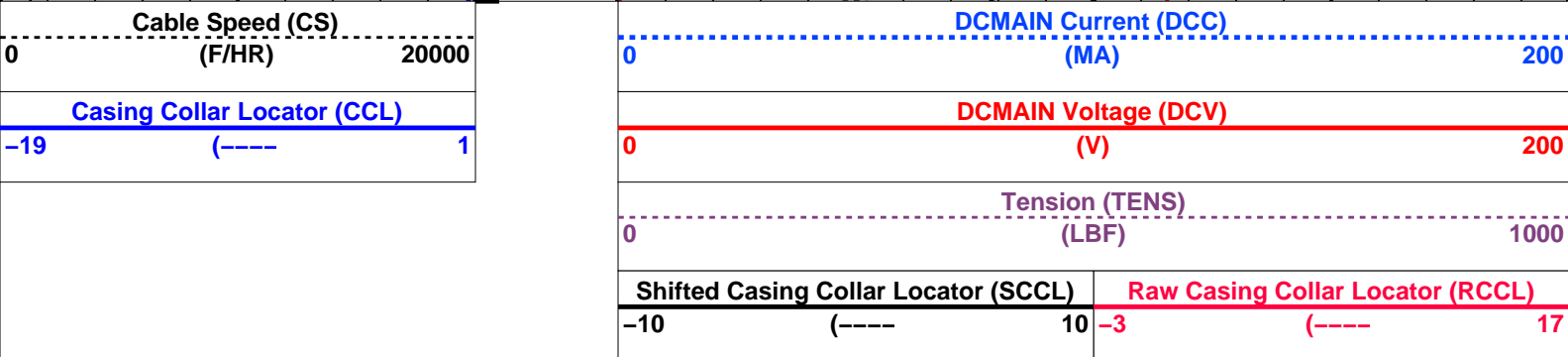
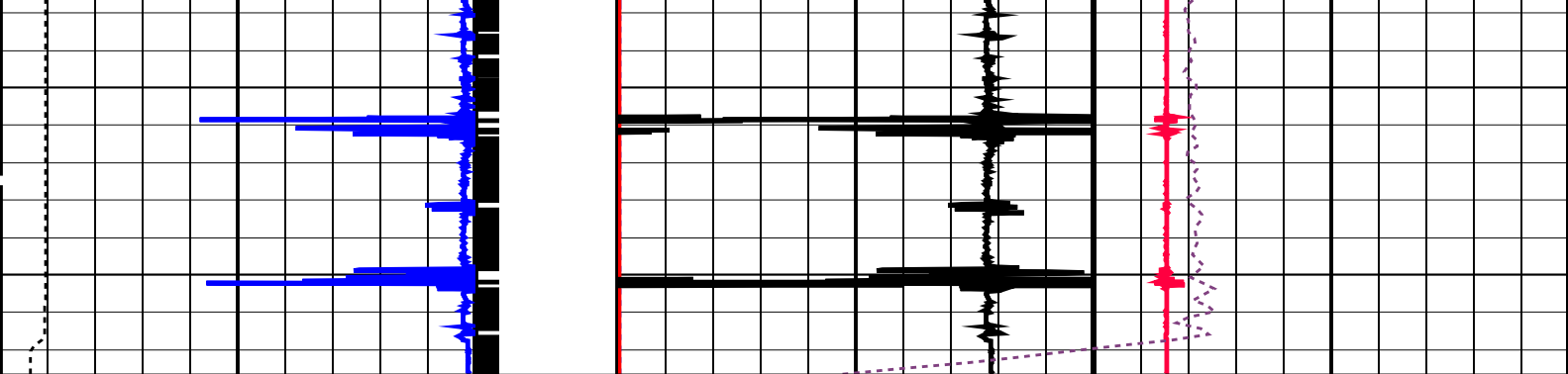
PIP SUMMARY

└─ Casing Collars

Time Mark Every 60 S

		Shifted Casing Collar Locator (SCCL)		Raw Casing Collar Locator (RCCL)		
		-10	(----	10	-3 (----	17
		Tension (TENS)				
		(LBF)				
		0	1000			
Casing Collar Locator (CCL)		DCMAIN Voltage (DCV)				
-19 (----		1	0 (V) 200			
Cable Speed (CS)		DCMAIN Current (DCC)				
0 (F/HR) 20000		0 (MA) 200				





PIP SUMMARY

Time Mark Every 60 S

Casing Collars

Parameters		
DLIS Name	Description	Value
CCL-L: Casing Collar Locator		
CCLD	CCL reset delay	12 IN
CCLT	CCL Detection Level	0.3 V

Format: PERFO Vertical Scale: 1:200 Graphics File Created: 07-Aug-2007 09:56

OP System Version: 14C0-302

MCM

SHM_GUN 14C0-302 CCL-L 14C0-302

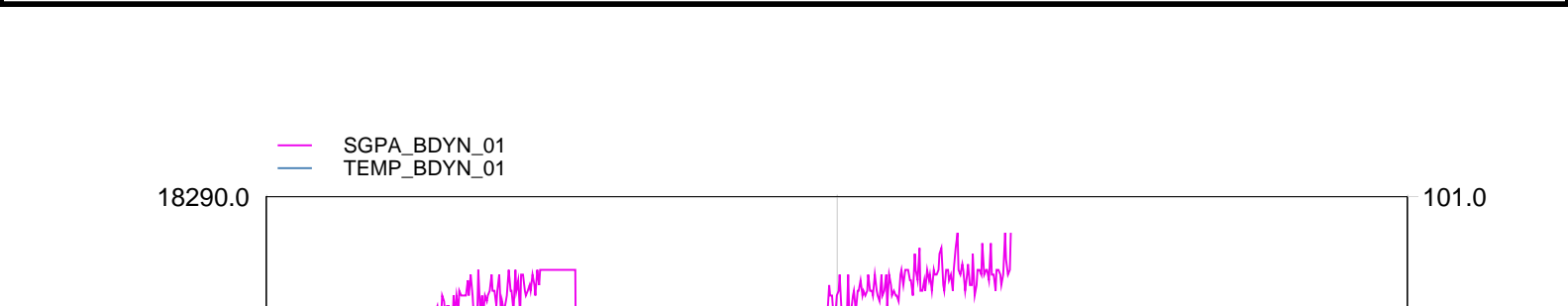
Output DLIS Files

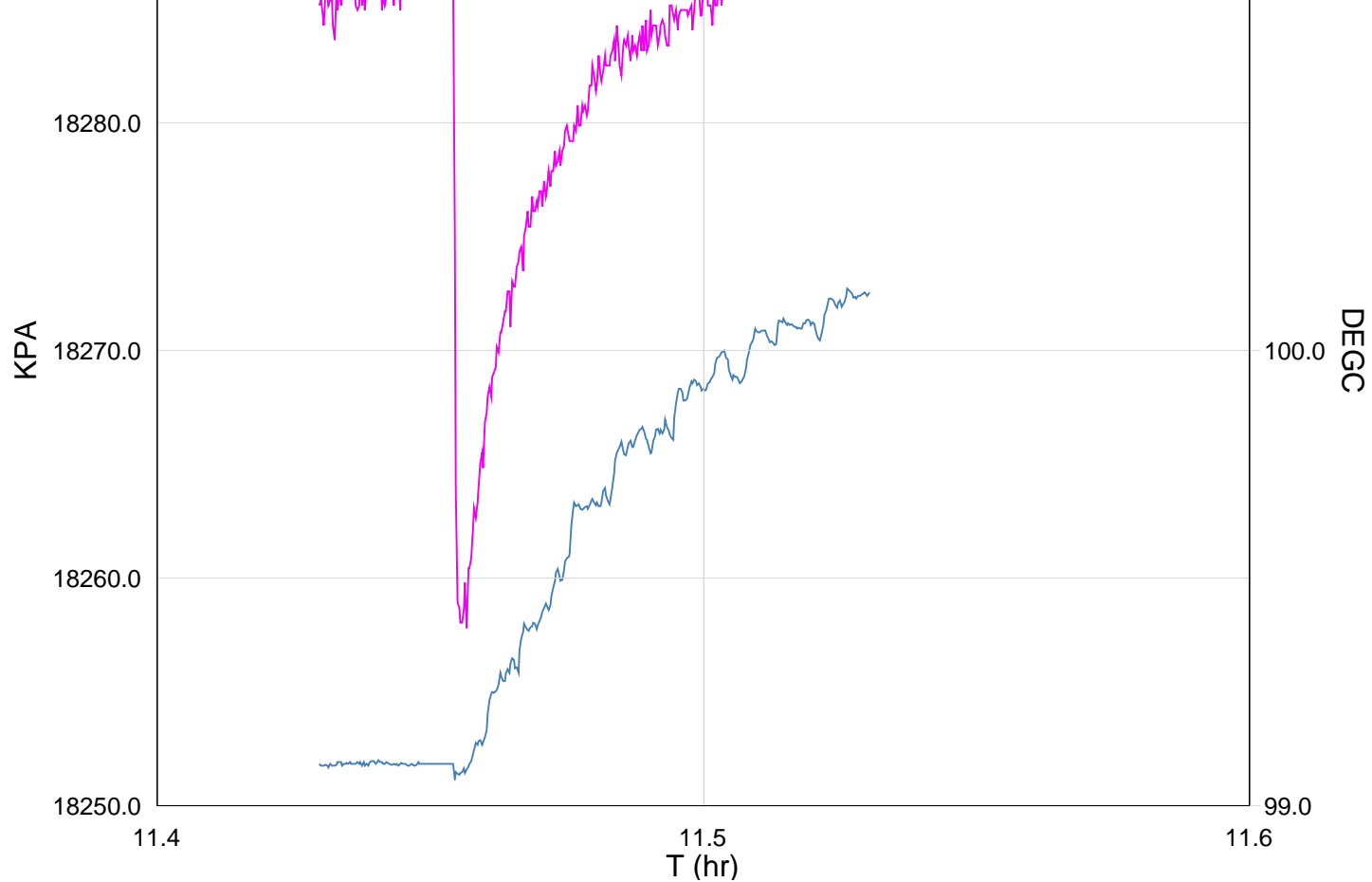
DEFAULT PERFO_030LUP FN:29 PRODUCER 07-Aug-2007 09:56

GUN # 1

2468.6m to 2472m MDKB

MAXIS Field Log





TIME	DEGF	PSIA
2160.0	212.09	2652.291
2100.0	211.84	2652.160
2040.0	211.52	2651.805
1980.0	210.89	2650.350
1920.0	210.36	2652.295
1860.0	210.37	2652.044

Schlumberger

Gun Shoot Pass

MAXIS Field Log

Company: Esso Australia Pty Ltd.

Well: B-15

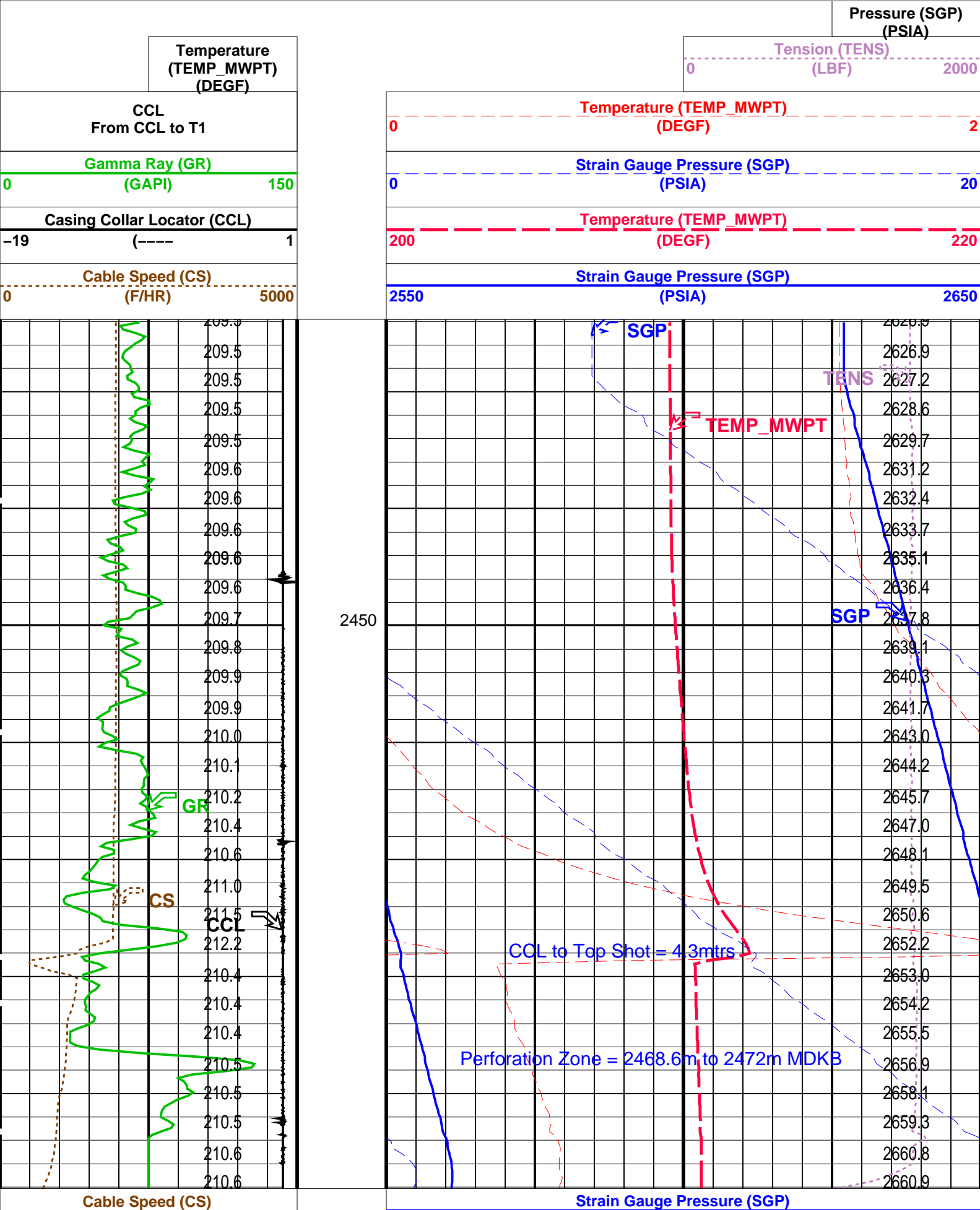
Output DLIS Files

DEFAULT PERFO_019LUP FN:18 PRODUCER 02-Aug-2007 11:22 2474.1 M 2436.9 M

OP System Version: 14C0-302
MCM

PIP SUMMARY

Time Mark Every 60 S




0	(F/HR)	5000	2550	(PSIA)	2650
Casing Collar Locator (CCL)			Temperature (TEMP_MWPT)		
-19	(----	1	200	(DEGF)	220
Gamma Ray (GR)			Strain Gauge Pressure (SGP)		
0	(GAPI)	150	0	(PSIA)	20
CCL From CCL to T1			Temperature (TEMP_MWPT)		
			0	(DEGF)	2
			Tension (TENS)		
			(LBF)		
			0		2000
			Pressure (SGP)		
			(PSIA)		

PIP SUMMARY					
Time Mark Every 60 S					

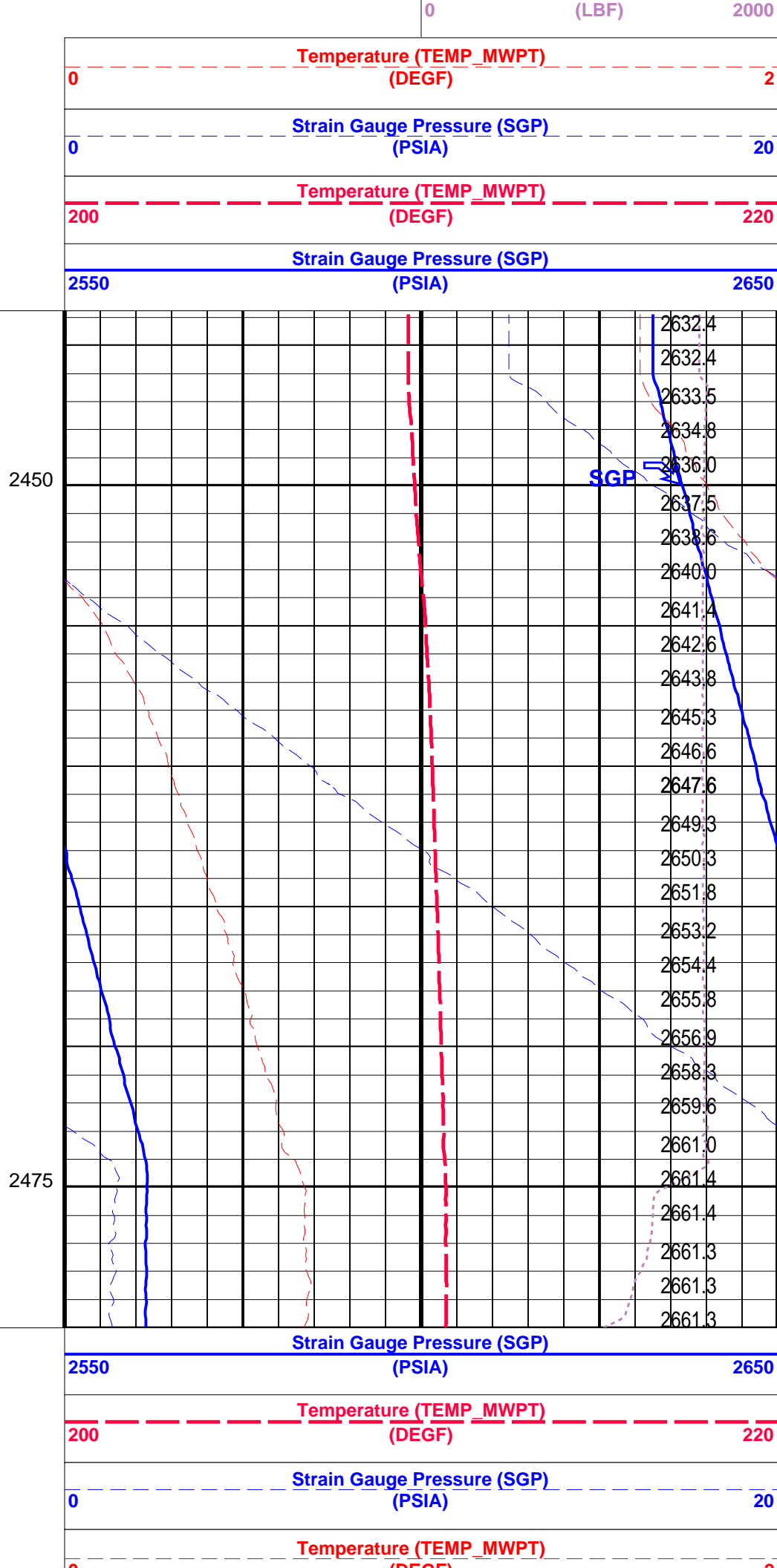
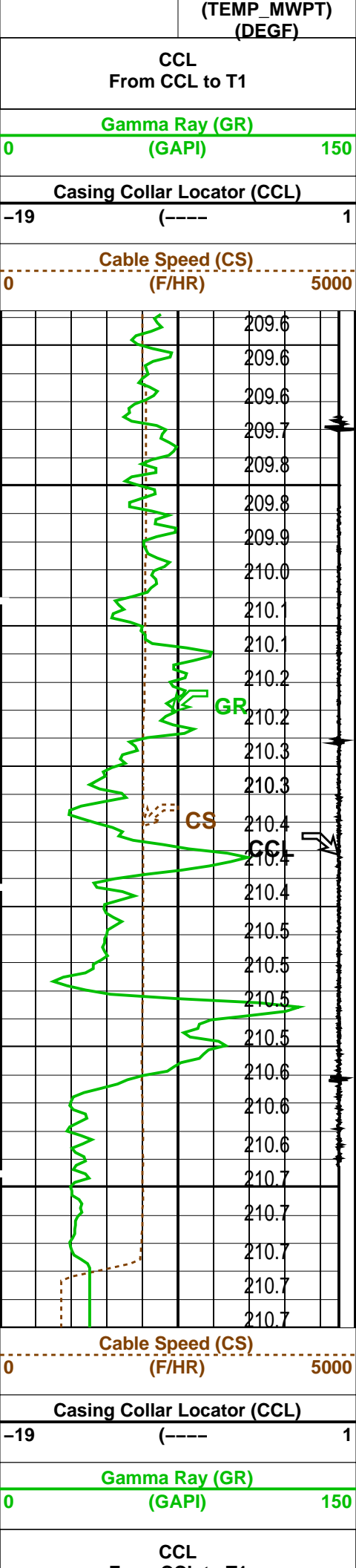
Parameters			
DLIS Name	Description	Value	
MWPT-CA: MEASUREMENT WHILE PERFORATING TOOL			
DEVI_FL_CORR	Deviation Angle for Flow Line Correction	0	DEG
FLD	Flow Line Density	1	G/C3
MWPT_NULL_SOURCE	MWPT NULL Temperature Source	TEMS	
MWPT_NULL_TEMP	MWPT NULL Temperature	0.0	DEGC
Format: MWP	Vertical Scale: 1:200	Graphics File Created: 02-Aug-2007 11:22	


OP System Version: 14C0-302			
MCM			
MWP_GUN	14C0-302	MWPT-CA	14C0-302
MWGT-AA	14C0-302		

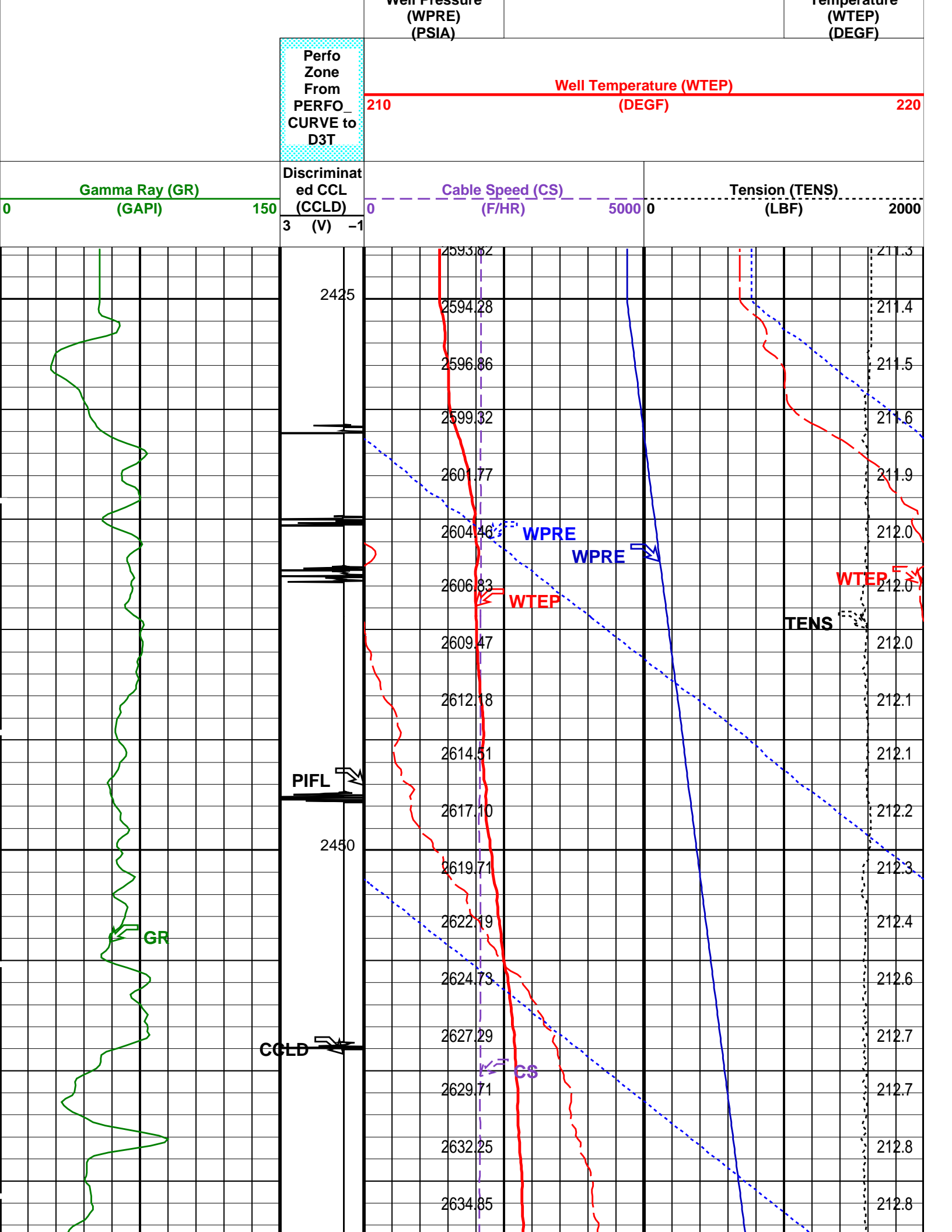
Output DLIS Files					
DEFAULT	PERFO_019LUP	FN:18	PRODUCER	02-Aug-2007 11:22	

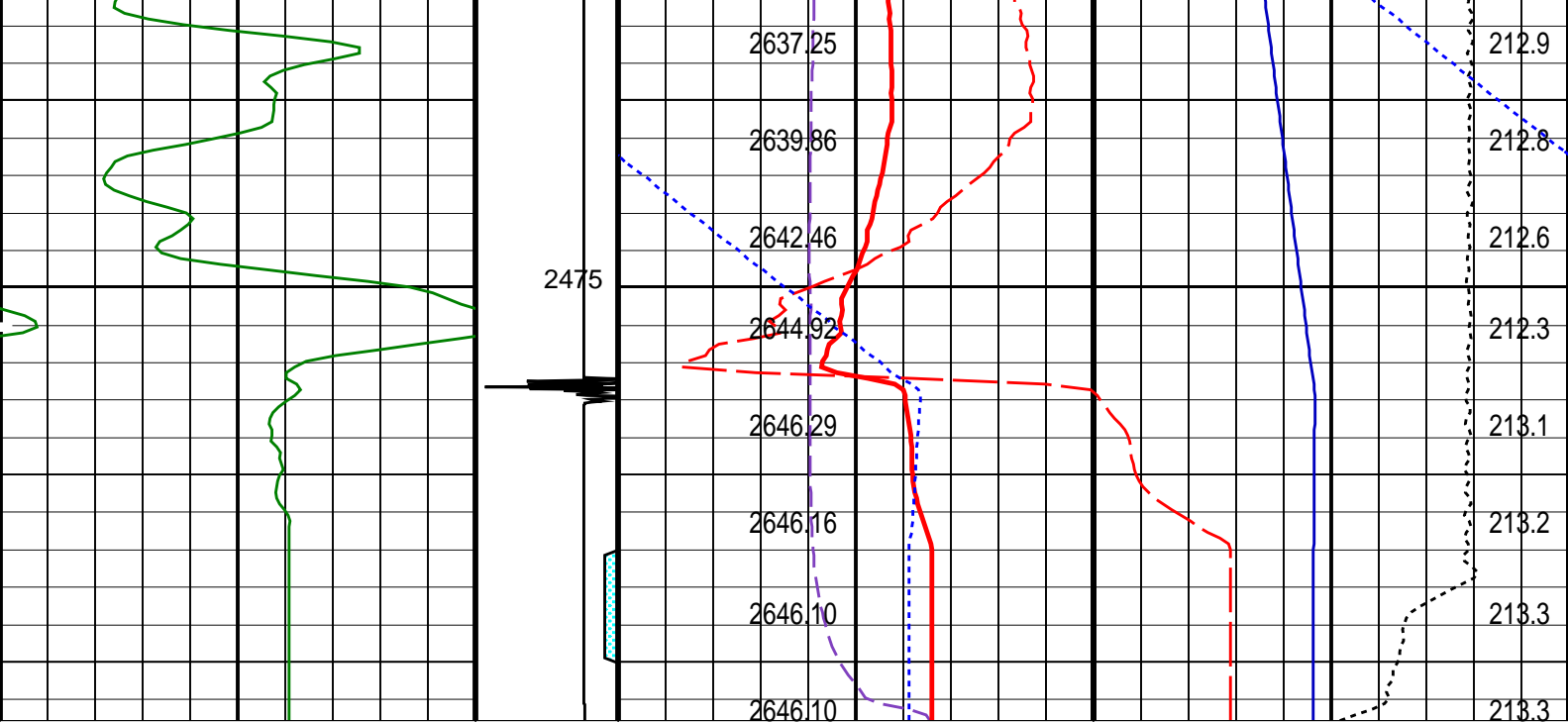
<div>  <div>Gun Correlation Pass</div> </div>					
MAXIS Field Log					

Company: Esso Australia Pty Ltd.						Well: B-15		
Output DLIS Files								
DEFAULT		PERFO_018LUP		FN:17	PRODUCER	02-Aug-2007 11:16	2480.0 M	2443.7 M
OP System Version: 14C0-302								
MCM								
MWP_GUN		14C0-302		MWPT-CA		14C0-302		
MWGT-AA		14C0-302						
PIP SUMMARY								
<div>Time Mark Every 60 S</div>								
						Pressure (SGP) (PSIA)		
Temperature				Tension (TENS)				



From CCL to T1				(DEGF)		2	
		Temperature (TEMP_MWPT) (DEGF)				Tension (TENS) (LBF) 0 2000	
						Pressure (SGP) (PSIA)	
PIP SUMMARY							
Time Mark Every 60 S							
Parameters							
DLIS Name		Description			Value		
MWPT-CA: MEASUREMENT WHILE PERFORATING TOOL							
DEVI_FL_CORR		Deviation Angle for Flow Line Correction			0 DEG		
FLD		Flow Line Density			1 G/C3		
MWPT_NULL_SOURCE		MWPT NULL Temperature Source			TEMS		
MWPT_NULL_TEMP		MWPT NULL Temperature			0.0 DEGC		
Format: MWP		Vertical Scale: 1:200		Graphics File Created: 02-Aug-2007 11:16			
OP System Version: 14C0-302							
MCM							
MWP_GUN		14C0-302		MWPT-CA		14C0-302	
MWGT-AA		14C0-302					
Output DLIS Files							
DEFAULT		PERFO_018LUP		FN:17		PRODUCER 02-Aug-2007 11:16	
		<div>Dummy Plug Pass</div>					
MAXIS Field Log							
Company: Esso Australia Pty Ltd.							
Well: B-15							
Input DLIS Files							
DEFAULT		PSP_007LUP		FN:6		PRODUCER 01-Aug-2007 14:45 2488.1 M 2426.2 M	
Output DLIS Files							
DEFAULT		PSP_010PUP		FN:9		PRODUCER 01-Aug-2007 15:01 2486.6 M 2422.6 M	
OP System Version: 14C0-302							
MCM							
PSPT-B		14C0-302					
PIP SUMMARY							
Time Mark Every 60 S							
		<div>Amplified Well Pressure (WPRE) (PSIA) 0 20</div>					
		<div>Well Pressure (WPRE) (PSIA) 2500 2700</div>					
		<div>Well Temperature (WTEP) (DEGF) 0 2</div>					
		Well Pressure				Temperature	





Gamma Ray (GR) (GAPI)	Discriminat ed CCL (CCLD)	Cable Speed (CS) (F/HR)	Tension (TENS) (LBF)
0 150	3 (V) -1	0 5000	0 2000

Perfo
Zone
From
PERFO_
CURVE to
D3T

Well Temperature (WTEP)
(DEGF)

210 220

Well Pressure (WPRE)
(PSIA)

Temperature (WTEP)
(DEGF)

Well Temperature (WTEP)
(DEGF)

0 2

Well Pressure (WPRE)
(PSIA)

2500 2700

Amplified Well Pressure (WPRE)
(PSIA)

0 20

PIP SUMMARY

Time Mark Every 60 S
Format: PSP_1 Vertical Scale: 1:200 Graphics File Created: 01-Aug-2007 15:01

OP System Version: 14C0-302
MCM
PSPT-B 14C0-302

Parameters		
DLIS Name	Description	Value
DO PP	System and Miscellaneous Depth Offset for Playback Playback Processing	-1.5 M NORMAL

Input DLIS Files

DEFAULT	PSP_007LUP	FN:6	PRODUCER	01-Aug-2007 14:45	2488.1 M	2426.2 M
---------	------------	------	----------	-------------------	----------	----------

Output DLIS Files

Company: **Esso Australia Pty Ltd.**

Well: **B-15**

Field: **Bream B**

Rig: **Crane / Prod4**

Country: **Australia**

Schlumberger

2 1/8" Phased Powerjet
MWPT Perforation
7" HPI Plug Setting Record