

Company: Esso Australia Pty Ltd.

Well: B-10

Field: Bream B

Rig : Crane / Prod4

Country: Australia

RST-C Sigma Survey
2 1/8" Powerjet Perforation Record
7" HPI PSP Plug Setting Record

Crane / Prod4
Bream B
Gippsland
B-10
Esso Australia Pty Ltd.

LOCATION			
Gippsland	Elev.:	K.B.	41.7 m
Basin		G.L.	-61 m
Bass Strait		D.F.	41.7 m
Permanent Datum:	M.S.L	Elev.:	0 m
Log Measured From:	D.F	41.7 m	above Perm. Datum
Drilling Measured From:	D.F		
State: Victoria	Max. Well Deviation 33 deg	Longitude 147 50'16.81"E	Latitude 038 31'10.90"S

Logging Date	8-Aug-2007		
Run Number	One		
Depth Driller	2190 m		
Schlumberger Depth	2188 m		
Bottom Log Interval	2188 m		
Top Log Interval	2125 m		
Casing Fluid Type	Production Fluids		
Salinity			
Density			
Fluid Level	1155 m		
BIT/CASING/TUBING STRING			
Bit Size	8.000 in		
From			
To			
Casing/Tubing Size	7.000 in		
Weight	26 lbm/ft		
Grade	L-80		
From	20 m		
To	2375.9 m		
Maximum Recorded Temperatures	210 degF		
Logger On Bottom	8-Aug-2007		8:00
Unit Number	Location		
Recorded By	889	Prod4	
	S Gilbert		
Witnessed By	B Robinson		

PVT DATA				Run 1
Oil Density				
Water Salinity				
Gas Gravity				
Bo				
Bw				
1/Bg				
Bubble Point Pressure				
Bubble Point Temperature				
Solution GOR				
Maximum Deviation				33 deg
CEMENTING DATA				
Primary/Squeeze				Primary
Casing String No				
Lead Cement Type				
Volume				
Density				
Water Loss				
Additives				
Tail Cement Type				
Volume				
Density				
Water Loss				
Additives				
Expected Cement Top				
Logging Date				
Run Number				
Depth Driller				
Schlumberger Depth				
Bottom Log Interval				
Top Log Interval				
Casing Fluid Type				
Salinity				
Density				
Fluid Level				
BIT/CASING/TUBING STRING				
Bit Size				
From				
To				
Casing/Tubing Size				
Weight				
Grade				
From				
To				
Maximum Recorded Temperatures				
Logger On Bottom				
Unit Number				
Recorded By				
Witnessed By				

DEPTH SUMMARY LISTING

Date Created: 24-JUL-2007 13:50:20

Depth System Equipment

Depth Measuring Device		Tension Device		Logging Cable	
Type:	IDW-EB	Type:	PSDS/OSDS	Type:	2-32ZT
Serial Number:	6373	Serial Number:	325357	Serial Number:	24425
Calibration Date:	4-Jan-2007	Calibration Date:	24-July-2007	Length:	
Calibrator Serial Number:	9	Calibrator Serial Number:	1174		6326 M
Calibration Cable Type:	2-32ZT	Calibration Gain:	0.89	Conveyance Method:	Wireline
Wheel Correction 1:	-2	Calibration Offset:	230.00	Rig Type:	Offshore_Fixed
Wheel Correction 2:	-4				

Depth Control Parameters

Log Sequence:	Subsequent Log In the Well
Reference Log Name:	Solar Composite Log
Reference Log Run Number:	
Reference Log Date:	28-Dec-2001

Depth Control Remarks

1. IDW used as Primary Depth control.
2. Z-chart used as Secondary depth control
3.
4.
5.
6.

DISCLAIMER

THE USE OF AND RELIANCE UPON THIS RECORDED-DATA BY THE HEREIN NAMED COMPANY (AND ANY OF ITS AFFILIATES, PARTNERS, REPRESENTATIVES, AGENTS, CONSULTANTS AND EMPLOYEES) IS SUBJECT TO THE TERMS AND CONDITIONS AGREED UPON BETWEEN SCHLUMBERGER AND THE COMPANY, INCLUDING: (a) RESTRICTIONS ON USE OF THE RECORDED-DATA; (b) DISCLAIMERS AND WAIVERS OF WARRANTIES AND REPRESENTATIONS REGARDING COMPANY'S USE OF AND RELIANCE UPON THE RECORDED-DATA; AND (c) CUSTOMER'S FULL AND SOLE RESPONSIBILITY FOR ANY INFERENCE DRAWN OR DECISION MADE IN CONNECTION WITH THE USE OF THIS RECORDED-DATA.

OTHER SERVICES1
OS1: None
OS2:
OS3:
OS4:
OS5:
REMARKS: RUN NUMBER 1
Log correlated to ExxonMobil Solar composite log dated 03-Jun-2005.
Maximum well deviation = 33 degrees at 788m MDKB.
Objectives: ConductTwo Sigma logging passes were conducted with the well shut in at 900 ft/hr over the interval 2190m to 2145m MDKB.
Perforate the zone 2179.5m to 2182.5 m MDKB using a 2 /8" phased Powerjet
Gun . Set 7" HPI PSP Plug with TOS @ 2183m MDKB.
SRUD: acin SRUT: 210 deg. LUD: 2188 m MDKB

Gun # 1
Top shot @ 2179.5m MDKB
CCL to Top Shot = 3.5m
CCL Stop Depth = 2176m MDKB
PLUG @ 2183m MDKB
CCL to Top of Seal = 10m
CCL stop depth = 2173m MDKB

Crew John Light , Andrew Hall
 Couldn't log CCL's Below set depth due to existing Plug.

SERVICE ORDER #: PROGRAM VERSION: FLUID LEVEL:			RUN 1 AUSL074854 14C0-302 1155 m		
LOGGED INTERVAL	START	STOP	LOGGED INTERVAL	START	STOP

EQUIPMENT DESCRIPTION	
1	...
2	...
3	...
4	...
5	...
6	...
7	...
8	...
9	...
10	...
11	...
12	...
13	...
14	...
15	...
16	...
17	...
18	...
19	...
20	...
21	...
22	...
23	...
24	...
25	...
26	...
27	...
28	...
29	...
30	...
31	...
32	...
33	...
34	...
35	...
36	...
37	...
38	...
39	...
40	...
41	...
42	...
43	...
44	...
45	...
46	...
47	...
48	...
49	...
50	...
51	...
52	...
53	...
54	...
55	...
56	...
57	...
58	...
59	...
60	...
61	...
62	...
63	...
64	...
65	...
66	...
67	...
68	...
69	...
70	...
71	...
72	...
73	...
74	...
75	...
76	...
77	...
78	...
79	...
80	...
81	...
82	...
83	...
84	...
85	...
86	...
87	...
88	...
89	...
90	...
91	...
92	...
93	...
94	...
95	...
96	...
97	...
98	...
99	...
100	...

RUN 1

RUN 2

SURFACE EQUIPMENT

SURFACE EQUIPMENT

WITM-A 1

MWPM-, 3000

DOWNHOLE EQUIPMENT

DOWNHOLE EQUIPMENT

AH-Swbs-b 761
AH-Swbs-b 761

11.93

AH-Swbs-b 762
AH-Swbs-b 762

11.24

AH-Swbs-b 763
AH-Swbs-b 763

10.55

MH-Swhs-a 726
MH-Swhs-a 726

9.87

Detail MT
TelStatus
CTEM

_____ 9.54

PSPT-A/B 827

9.54

PSC-A 806
PSPT-B 827
PSTC 806
PBMS-B 827

CQG_F_Mano 827
 RTD_Thermometer 827
 GR 827
 CCL 827
 PBMS 827

GR

8.41

Well_Temp
CQG Manom
CCL
PBMS PSTC

\leq 7.48
 \leq 7.37
 \leq 7.25
 \leq 7.02

RST-C 23
RSCH-A 23
RSC-C 27
RSS-A 23
RSXH-A 375
RSX-C 375

7.02

CCL
SMWP Pres
SMWP Temp
Tension

TOOL ZERO

AH-Flex Joint 41
AH-Flex Joint 41

5.29

RSC-A Far
RSC-A PNG
RSC-A Nea
RSX-A PNG

4.24
4.09

AH-122 8
AH-SAH-G 1035
AH-SAH-G 1035

4.73
4.63
4.17

AH-ESIC 4100821
AH-ESIC 4100821

3.63

MWP_GUN
GUN-3 mtr 2 1/8" Phased Powerjet Gun 1

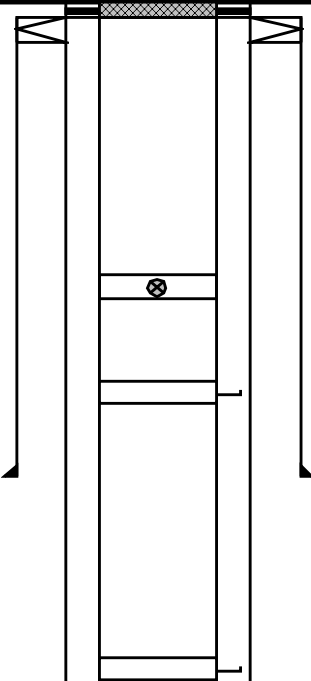
3.17

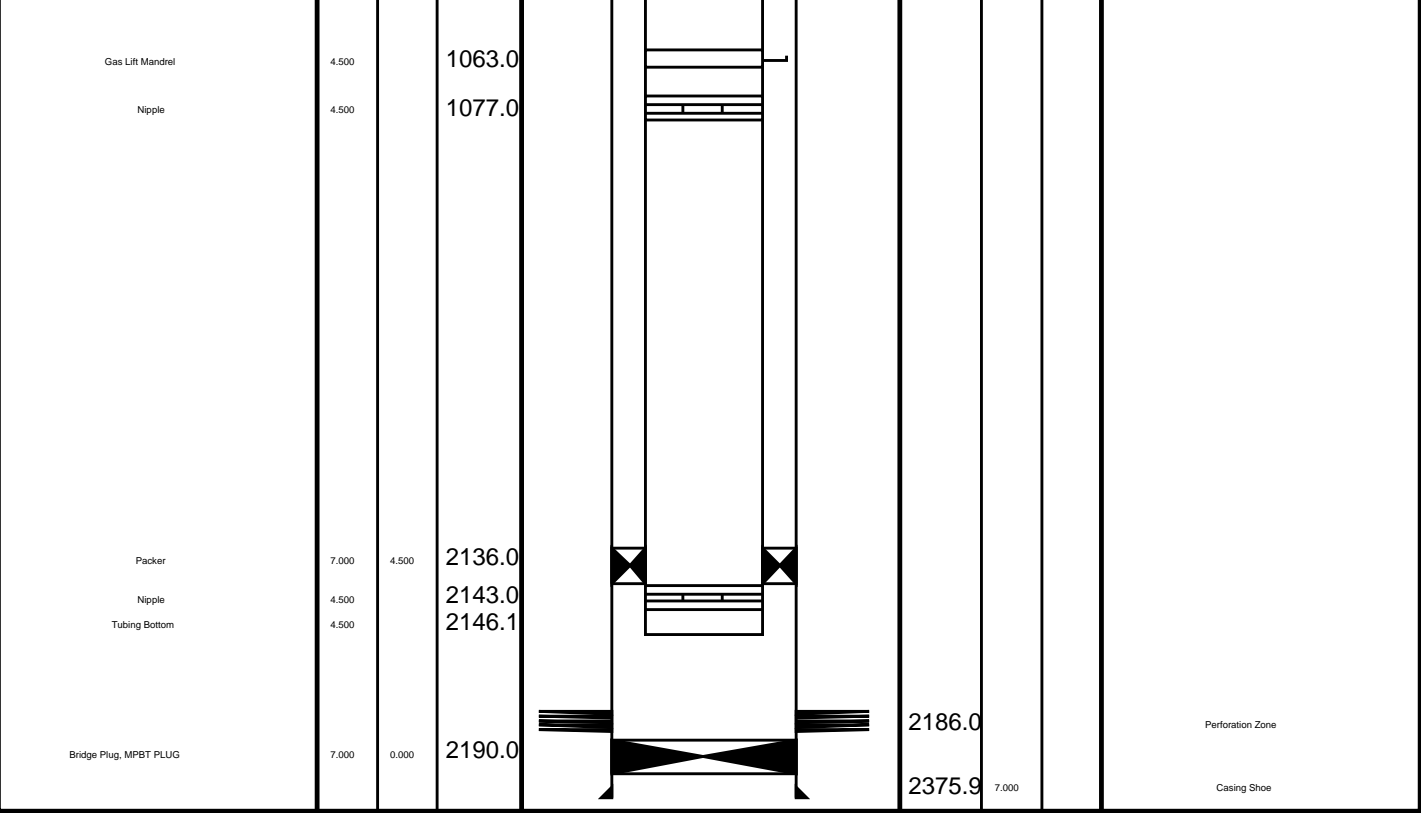
Tension HV 0.00
TOOL ZERO

MAXIMUM STRING DIAMETER 1.72 IN
MEASUREMENTS RELATIVE TO TOOL ZERO
ALL LENGTHS IN METERS

TOOL BOTTOM

MAXIMUM STRING DIAMETER 2.13 IN
MEASUREMENTS RELATIVE TO TOOL ZERO
ALL LENGTHS IN METERS

Production String	(in)		(m)	Well Schematic	(m)	(in)		Casing String
	OD	ID	MD		MD	OD	ID	
Tubing Hanger Tubing, L-80	7.000 4.500	4.500	19.0 20.3		20.8 20.8	10.000 10.750	7.000	Casing String, L-80 Liner Hanger
Shutin Valve	4.500		446.0					
Gas Lift Mandrel	4.500		527.0					
					667.7	10.750		Casing Shoe
Gas Lift Mandrel	4.500		802.0					



Job Events Summary

MAXIS Field Log

Schlumberger Job Event Summary

Time	Elapsed Time	Depth (M)	File
Simulated Log	7-Aug-2007 12:57	000:02	RST_PSP_008LUP
Log Pass (up)	8-Aug-2007 11:29	000:12	2191.1 - 2135.7 RST_PSP_014LUP
Log Pass (up)	8-Aug-2007 11:46	000:13	2191.1 - 2134.1 RST_PSP_016LUP
Log Pass (up)	9-Aug-2007 9:48	000:05	2182.4 - 2151.6 PERFO_030LUP
Log Pass (up)	9-Aug-2007 9:58	000:15	2181.5 - 2144.6 PERFO_031LUP
Station Log	9-Aug-2007 10:01	000:08	2176.0 - 1.2 PERFO_032LTP
Log Pass (up)	9-Aug-2007 11:26	000:10	2188.2 - 2092.9 PERFO_038LUP
Log Pass (up)	9-Aug-2007 13:58	000:07	2143.5 - 2095.3 PERFO_049LUP
Log Pass (up)	9-Aug-2007 14:17	000:21	2175.7 - 2132.5 PERFO_052LUP



Plug Setting Pass

MAXIS Field Log

Output DLIS Files

DEFAULT PERFO_052LUP FN:50 PRODUCER 09-Aug-2007 14:17 2175.7 M 2132.5 M

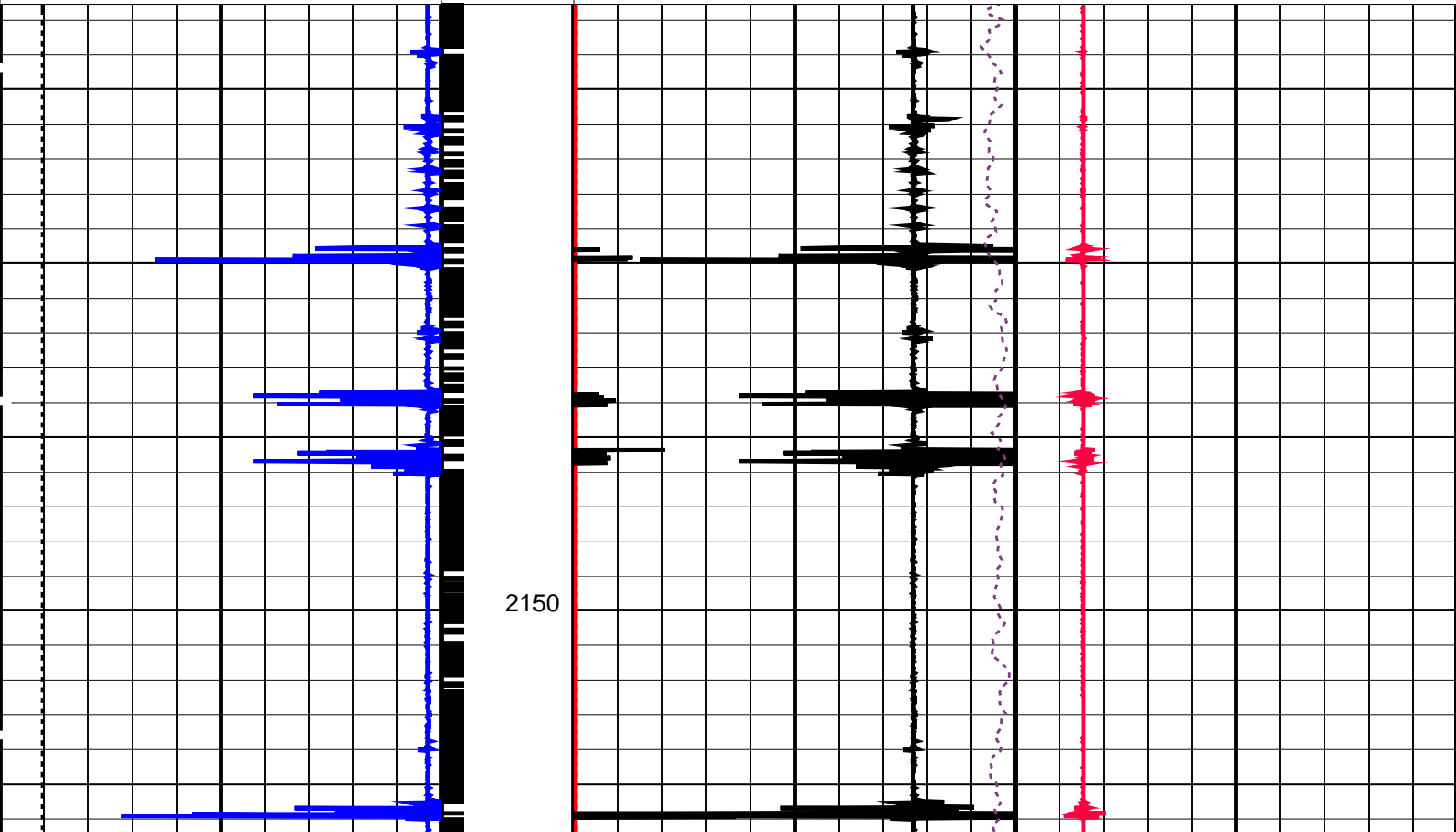
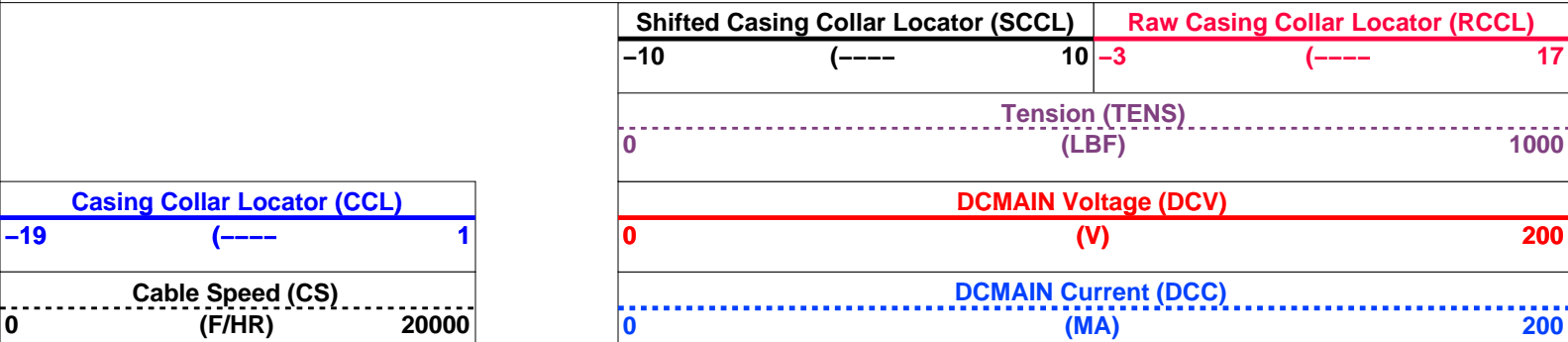
OP System Version: 14C0-302
MCM

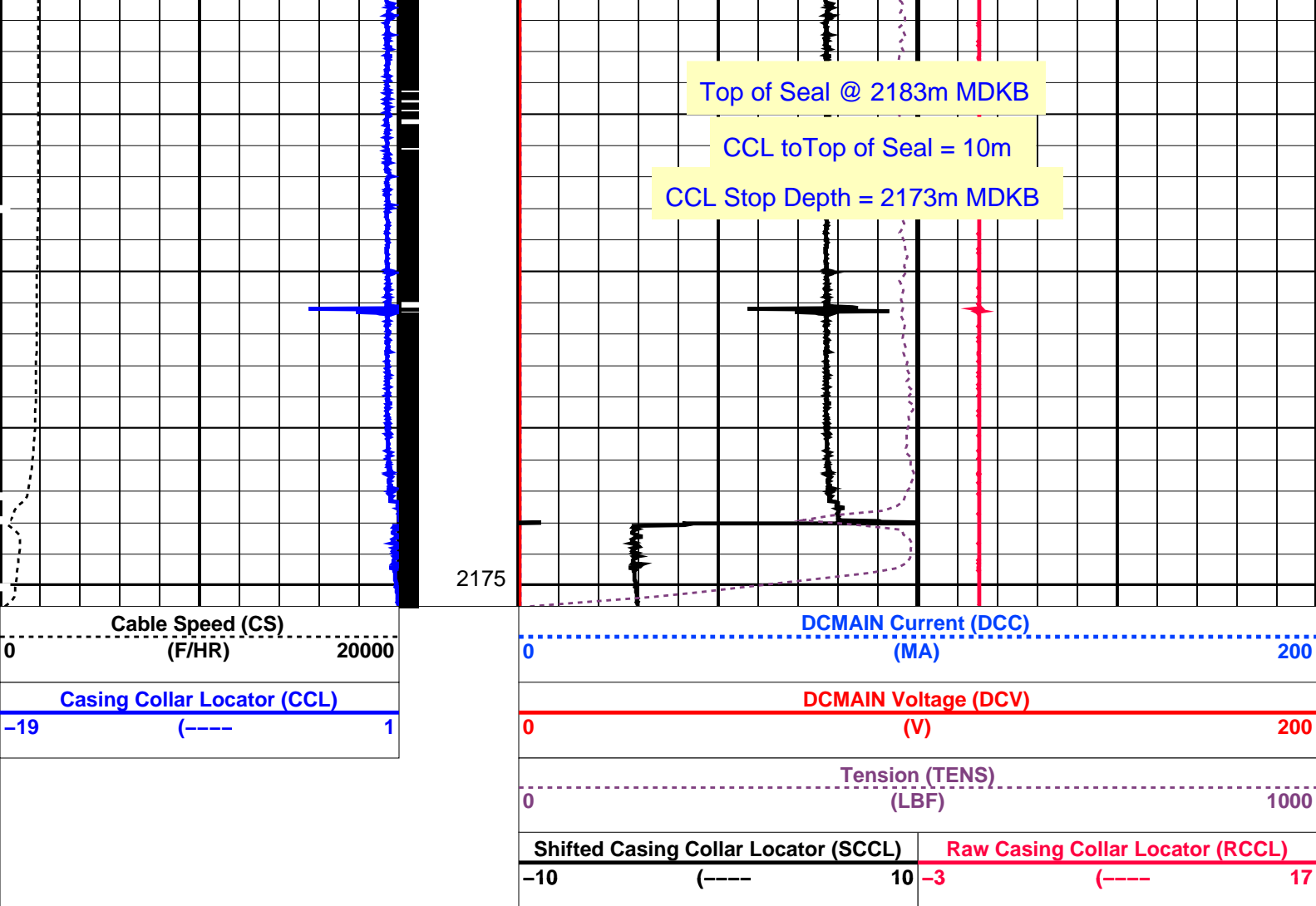
SHM_GUN 14C0-302 CCL-L 14C0-302

PIP SUMMARY

Casing Collars

Time Mark Every 60 S





PIP SUMMARY

Time Mark Every 60 S

← Casing Collars

Parameters

DLIS Name	Description	Value
CCL-L: Casing Collar Locator		
CCLD	CCL reset delay	12 IN
CCLT	CCL Detection Level	0.3 V

Format: PERFO Vertical Scale: 1:200 Graphics File Created: 09-Aug-2007 14:17

OP System Version: 14C0-302
MCM

SHM_GUN 14C0-302 CCL-L 14C0-302

Output DLIS Files

DEFAULT PERFO_052LUP FN:50 PRODUCER 09-Aug-2007 14:17

Schlumberger

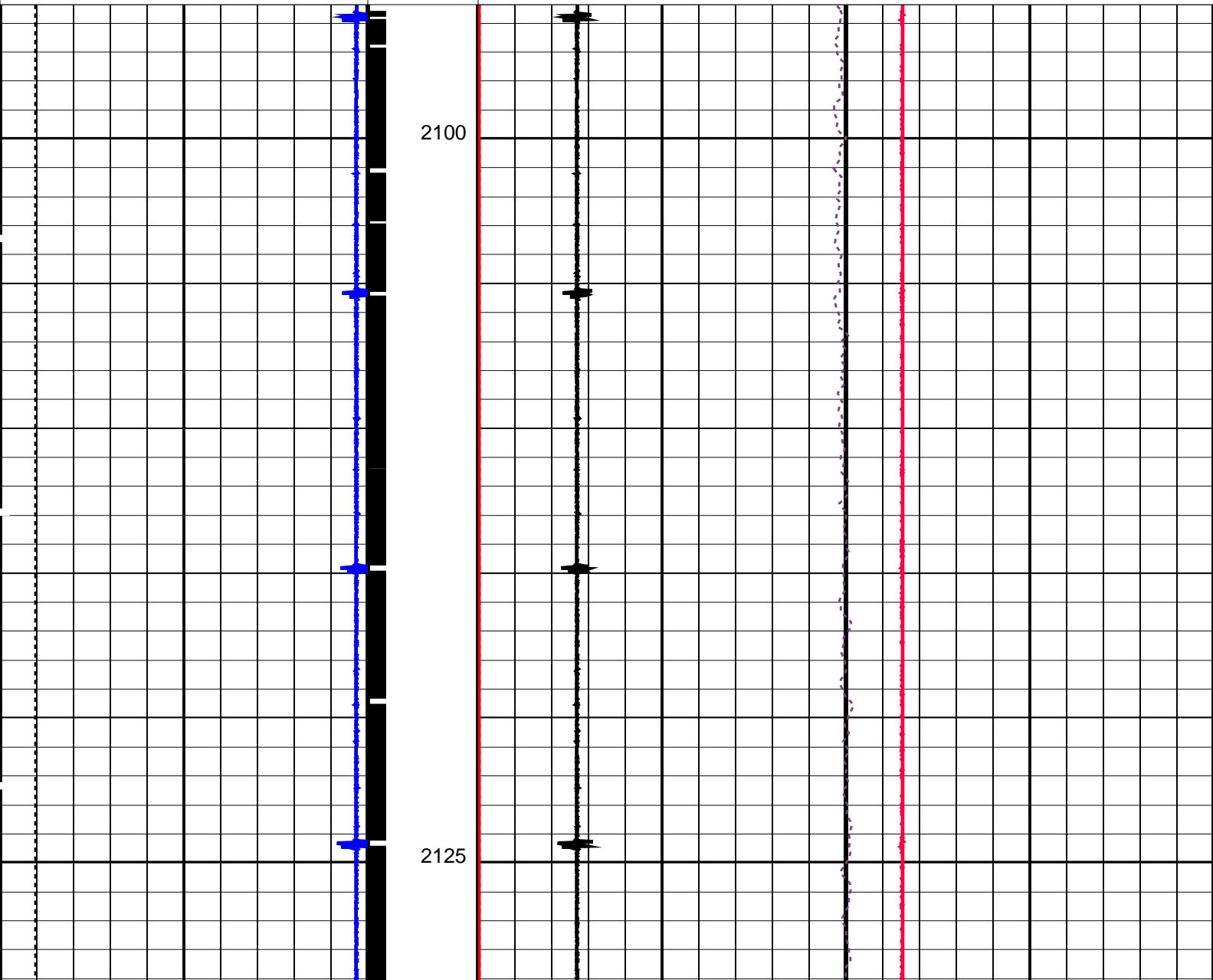
Plug Correlation Pass

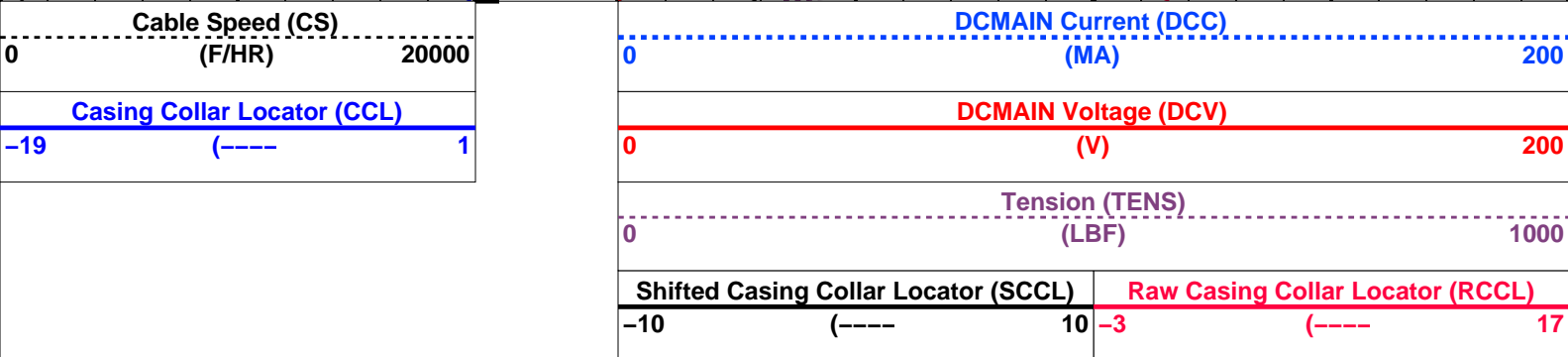
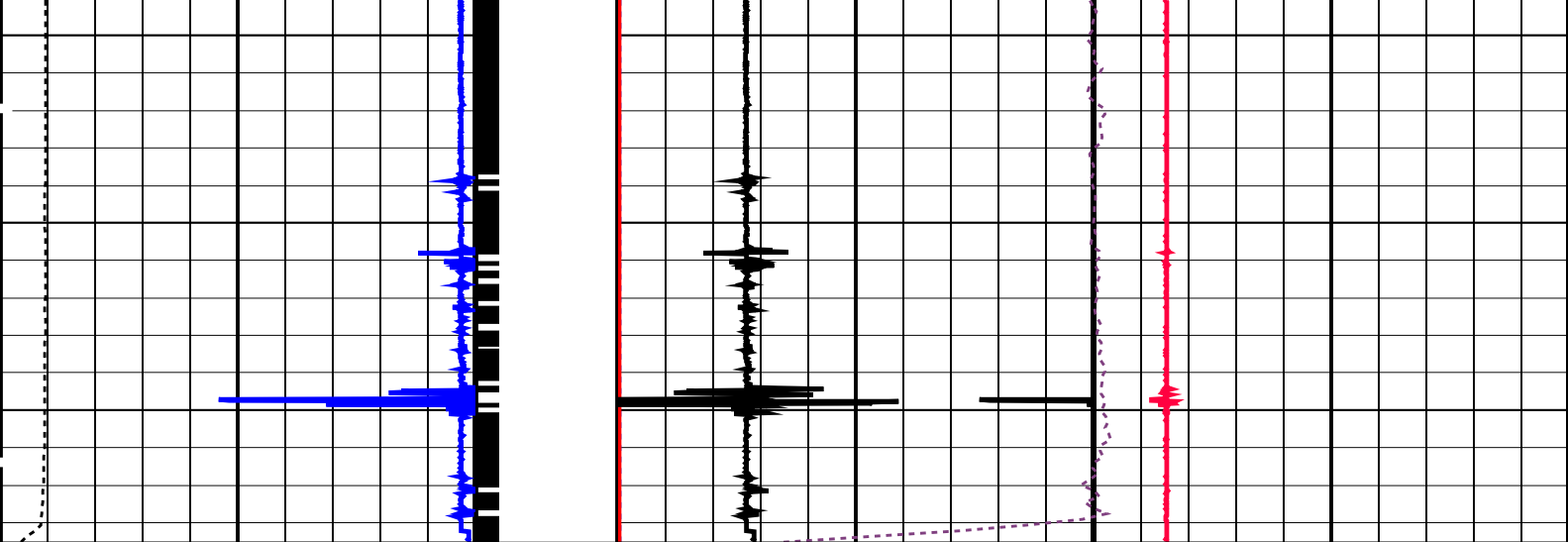
PIP SUMMARY

└─ Casing Collars

Time Mark Every 60 S

--	--	--	--	--	--	--	--	--	--	--	--	--	--	--	--	--	--	--	--	--	--	--	--	--	--	--	--	--	--	--	--	--	--	--	--	--	--	--	--	--	--	--	--	--	--	--	--	--	--	--	--	--	--	--	--	--	--	--	--	--	--	--	--	--	--	--	--	--	--	--	--	--	--	--	--	--	--	--	--	--	--	--	--	--	--	--	--	--	--	--	--	--	--	--	--	--	--	--	--	--	--	--	--	--	--	--	--	--	--	--	--	--	--	--	--	--	--	--	--	--	--	--	--	--	--	--	--	--	--	--	--	--	--	--	--	--	--	--	--	--	--	--	--	--	--	--	--	--	--	--	--	--	--	--	--	--	--	--	--	--	--	--	--	--	--	--	--	--	--	--	--	--	--	--	--	--	--	--	--	--	--	--	--	--	--	--	--	--	--	--	--	--	--	--	--	--	--	--	--	--	--	--	--	--	--	--	--	--	--	--	--	--	--	--	--	--	--	--	--	--	--	--	--	--	--	--	--	--	--	--	--	--	--	--	--	--	--	--	--	--	--	--	--	--	--	--	--	--	--	--	--	--	--	--	--	--	--	--	--	--	--	--	--	--	--	--	--	--	--	--	--	--	--	--	--	--	--	--	--	--	--	--	--	--	--	--	--	--	--	--	--	--	--	--	--	--	--	--	--	--	--	--	--	--	--	--	--	--	--	--	--	--	--	--	--	--	--	--	--	--	--	--	--	--	--	--	--	--	--	--	--	--	--	--	--	--	--	--	--	--	--	--	--	--	--	--	--	--	--	--	--	--	--	--	--	--	--	--	--	--	--	--	--	--	--	--	--	--	--	--	--	--	--	--	--	--	--	--	--	--	--	--	--	--	--	--	--	--	--	--	--	--	--	--	--	--	--	--	--	--	--	--	--	--	--	--	--	--	--	--	--	--	--	--	--	--	--	--	--	--	--	--	--	--	--	--	--	--	--	--	--	--	--	--	--	--	--	--	--	--	--	--	--	--	--	--	--	--	--	--	--	--	--	--	--	--	--	--	--	--	--	--	--	--	--	--	--	--	--	--	--	--	--	--	--	--	--	--	--	--	--	--	--	--	--	--	--	--	--	--	--	--	--	--	--	--	--	--	--	--	--	--	--	--	--	--	--	--	--	--	--	--	--	--	--	--	--	--	--	--	--	--	--	--	--	--	--	--	--	--	--	--	--	--	--	--	--	--	--	--	--	--	--	--	--	--	--	--	--	--	--	--	--	--	--	--	--	--	--	--	--	--	--	--	--	--	--	--	--	--	--	--	--	--	--	--	--	--	--	--	--	--	--	--	--	--	--	--	--	--	--	--	--	--	--	--	--	--	--	--	--	--	--	--	--	--	--	--	--	--	--	--	--	--	--	--	--	--	--	--	--	--	--	--	--	--	--	--	--	--	--	--	--	--	--	--	--	--	--	--	--	--	--	--	--	--	--	--	--	--	--	--	--	--	--	--	--	--	--	--	--	--	--	--	--	--	--	--	--	--	--	--	--	--	--	--	--	--	--	--	--	--	--	--	--	--	--	--	--	--	--	--	--	--	--	--	--	--	--	--	--	--	--	--	--	--	--	--	--	--	--	--	--	--	--	--	--	--	--	--	--	--	--	--	--	--	--	--	--	--	--	--	--	--	--	--	--	--	--	--	--	--	--	--	--	--	--	--	--	--	--	--	--	--	--	--	--	--	--	--	--	--	--	--	--	--	--	--	--	--	--	--	--	--	--	--	--	--	--	--	--	--	--	--	--	--	--	--	--	--	--	--	--	--	--	--	--	--	--	--	--	--	--	--	--	--	--	--	--	--	--	--	--	--	--	--	--	--	--	--	--	--	--	--	--	--	--	--	--	--	--	--	--	--	--	--	--	--	--	--	--	--	--	--	--	--	--	--	--	--	--	--	--	--	--	--	--	--	--	--	--	--	--	--	--	--	--	--	--	--	--	--	--	--	--	--	--	--	--	--	--	--	--	--	--	--	--	--	--	--	--	--	--	--	--	--	--	--	--	--	--	--	--	--	--	--	--	--	--	--	--	--	--	--	--	--	--	--	--	--	--	--	--	--	--	--	--	--	--	--	--	--	--	--	--	--	--	--	--	--	--	--	--	--	--	--	--	--	--	--	--	--	--	--	--	--	--	--	--	--	--	--	--	--	--	--	--	--	--	--	--	--	--	--	--	--	--	--	--	--	--	--	--	--	--	--	--	--	--	--	--	--	--	--	--	--	--	--	--	--	--	--	--	--	--	--	--	--	--	--	--	--	--	--	--	--	--	--	--	--	--	--	--	--	--	--	--	--	--	--	--	--	--	--	--	--	--	--	--	--	--	--	--	--	--	--	--	--	--	--	--	--	--	--	--	--	--	--	--	--	--	--	--	--	--	--	--	--	--	--	--	--	--	--	--	--	--	--	--	--	--	--	--	--	--	--	--	--	--	--	--	--	--	--	--	--	--	--	--	--	--	--	--	--	--	--	--	--	--	--	--	--	--	--	--	--	--	--	--	--	--	--	--	--	--	--	--	--	--	--	--	--	--	--	--	--	--	--	--	--	--	--	--	--	--	--	--	--	--	--	--	--	--	--	--	--	--	--	--	--	--	--	--	--	--	--	--	--	--	--	--	--	--	--	--	--	--	--	--	--	--	--	--	--	--	--	--	--	--	--	--	--	--	--	--	--	--	--	--	--	--	--	--	--	--	--	--	--	--	--	--	--	--	--	--	--	--	--	--	--	--	--	--	--	--	--	--	--	--	--	--	--	--	--	--	--	--	--	--	--	--	--	--	--	--	--	--	--	--	--	--	--	--	--	--	--	--	--	--	--	--	--	--	--	--	--	--	--	--	--	--	--	--	--	--	--	--	--	--	--	--	--	--	--	--	--	--	--	--	--	--	--	--	--	--	--	--	--	--	--	--	--	--	--	--	--	--	--	--	--	--	--	--	--	--	--	--	--	--	--	--	--	--	--	--	--	--	--	--	--	--	--	--	--	--	--	--	--	--	--	--	--	--	--	--	--	--	--	--	--	--	--	--	--	--	--	--	--	--	--	--	--	--	--	--	--	--	--	--	--	--	--	--	--	--	--	--	--	--	--	--	--	--	--	--	--	--	--	--	--	--	--	--	--	--	--	--	--	--	--	--	--	--	--	--	--	--	--	--	--	--	--	--	--	--	--	--	--	--	--	--	--	--	--	--	--	--	--	--	--	--	--	--	--	--	--	--	--	--	--	--	--	--	--	--	--	--	--	--	--	--	--	--	--	--	--	--	--	--	--	--	--	--	--	--	--	--	--	--	--	--	--	--	--	--	--	--	--	--	--	--	--	--	--	--	--	--	--	--	--	--	--	--	--	--	--	--	--	--	--	--	--	--	--	--	--	--	--	--	--	--	--	--	--	--	--	--	--	--	--	--	--	--	--	--	--	--	--	--	--	--	--	--	--	--	--	--	--	--	--	--	--	--	--	--	--	--	--	--	--	--	--	--	--	--	--	--	--	--	--	--	--	--	--	--	--	--	--	--	--	--	--	--	--	--





PIP SUMMARY

← Casing Collars

Time Mark Every 60 S

Parameters

DLIS Name	Description	Value
CCL-L: Casing Collar Locator		
CCLD	CCL reset delay	12 IN
CCLT	CCL Detection Level	0.3 V

Format: PERFO Vertical Scale: 1:200 Graphics File Created: 09-Aug-2007 13:58

OP System Version: 14C0-302

MCM

SHM_GUN 14C0-302 CCL-L 14C0-302

Output DLIS Files

DEFAULT PERFO_049LUP FN:47 PRODUCER 09-Aug-2007 13:58

Schlumberger

Dummy Plug Pass

MAXIS Field Log

Output DLIS Files

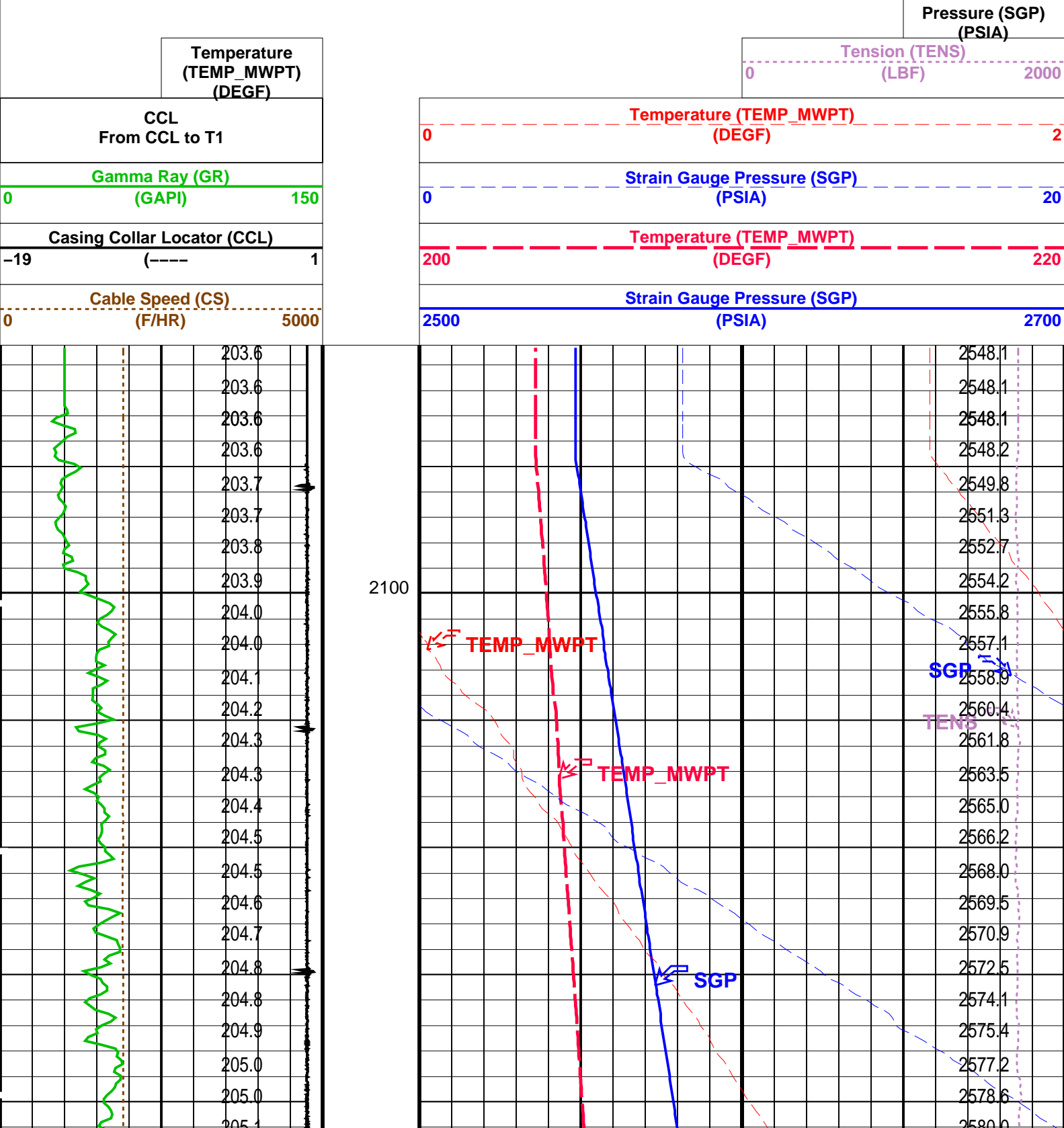
OP System Version: 14C0-302
MCM

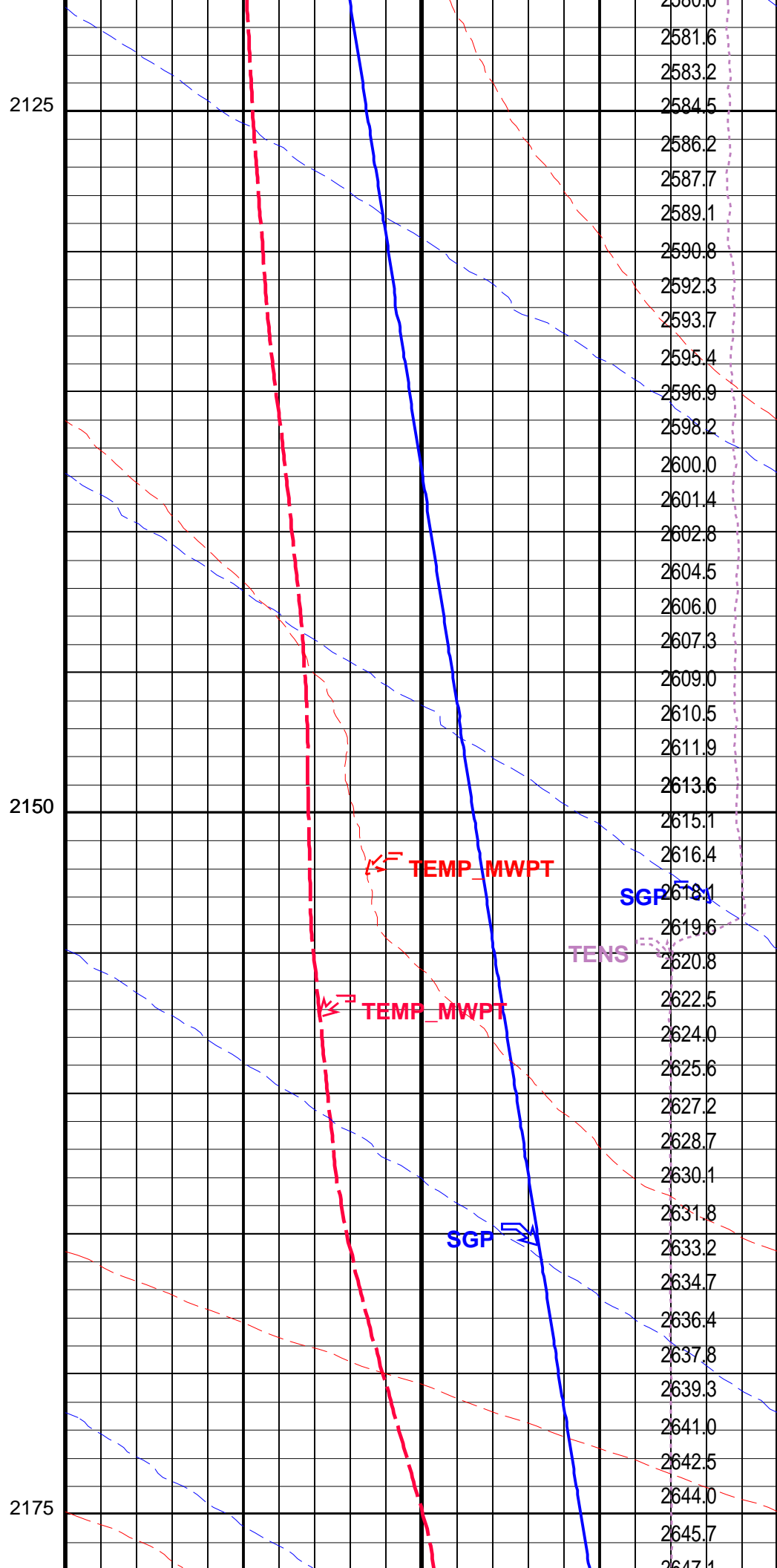
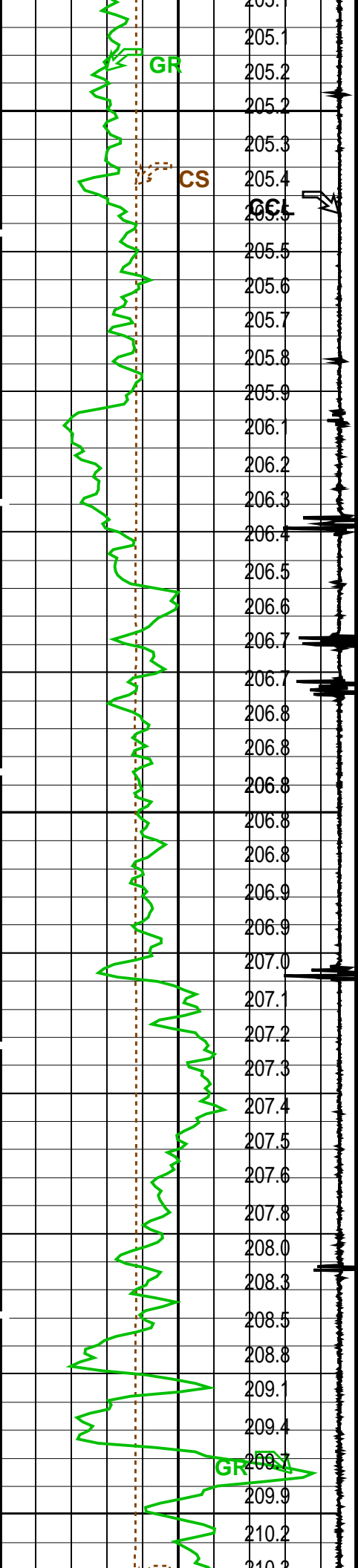
MWP_GUN14C0-302MWPT-CA14C0-302

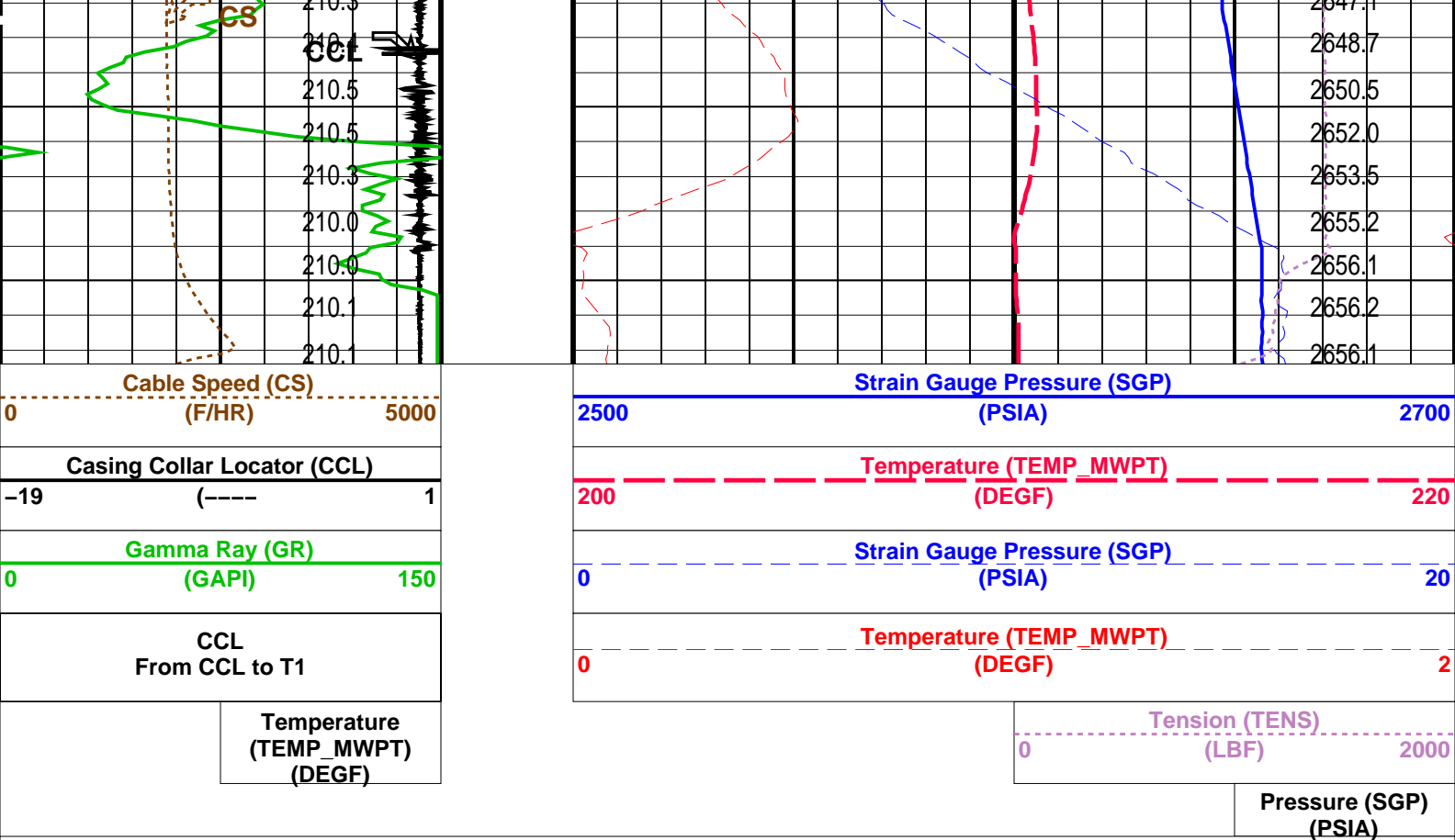
MWGT-AA14C0-302

PIP SUMMARY

Time Mark Every 60 S







PIP SUMMARY

Time Mark Every 60 S

Parameters		
DLIS Name	Description	Value
MWPT-CA: MEASUREMENT WHILE PERFORATING TOOL		
DEVI_FL_CORR	Deviation Angle for Flow Line Correction	0 DEG
FLD	Flow Line Density	1 G/C3
MWPT_NULL_SOURCE	MWPT NULL Temperature Source	TEMS
MWPT_NULL_TEMP	MWPT NULL Temperature	0.0 DEGC
System and Miscellaneous		
DO	Depth Offset for Playback	-0.8 M
PP	Playback Processing	NORMAL

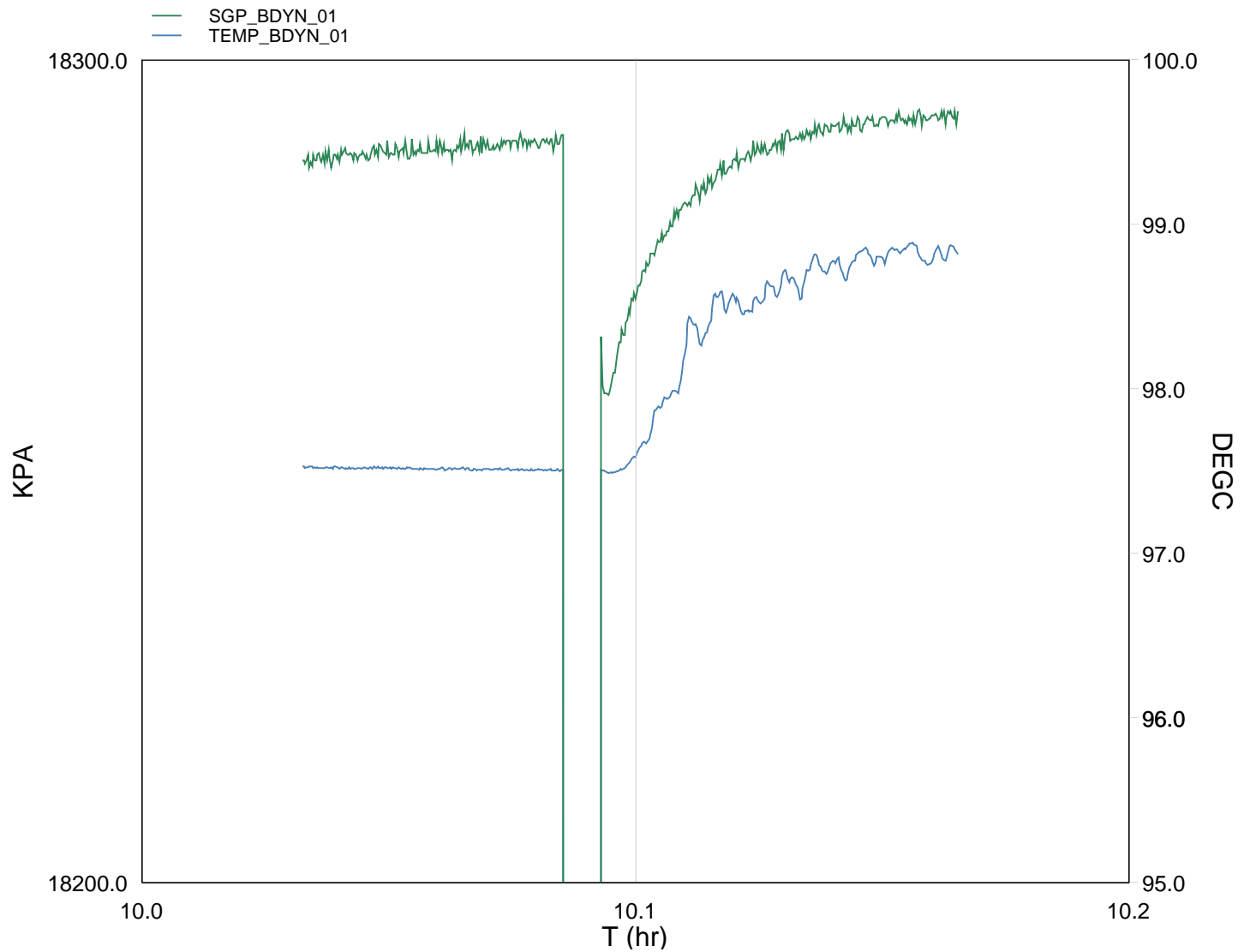
Format: MWP Vertical Scale: 1:200 Graphics File Created: 09-Aug-2007 11:37

OP System Version: 14C0-302			
MCM			
MWP_GUN	14C0-302	MWPT-CA	14C0-302
MWGT-AA	14C0-302		

Input DLIS Files					
DEFAULT	PERFO_038LUP	FN:37	PRODUCER	09-Aug-2007 11:26	2188.2 M 2092.9 M
Output DLIS Files					
DEFAULT	PERFO_039PUP	FN:38	PRODUCER	09-Aug-2007 11:37	

Schlumberger

Gun # 1 Fired @
2179.5m to 2182.5m MDKB



TIME TEMP_MWPT_S SGPA_SL

2190.0	207.54	2652.539
2220.0	207.54	2652.520
2250.0	207.53	2652.553
2280.0	207.53	2652.576
2310.0	207.52	2652.795
2340.0	207.52	2652.733
2370.0	-102.32	-79275.148
2400.0	207.50	2648.338
2430.0	207.84	2650.540
2460.0	209.19	2651.748
2490.0	209.39	2652.327
2520.0	209.53	2652.690
2550.0	209.82	2652.973
2580.0	209.81	2653.044
2610.0	209.92	2653.122
2640.0	209.93	2653.232



Gun Shoot Pass

MAXIS Field Log

Company: Esso Australia Pty Ltd. Well: B-10

Output DLIS Files

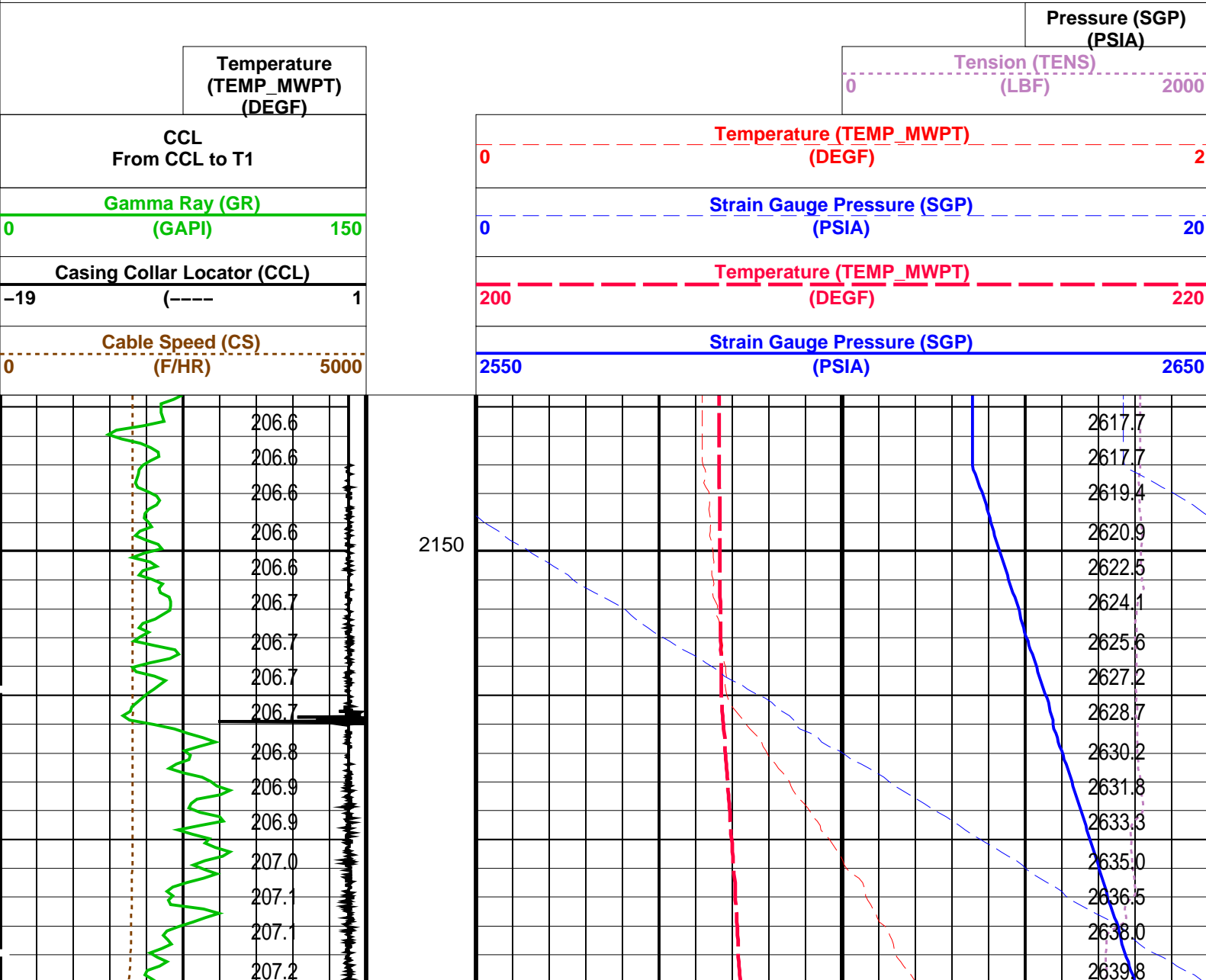
DEFAULT PERFO_031LUP FN:30 PRODUCER 09-Aug-2007 09:58 2181.5 M 2144.6 M

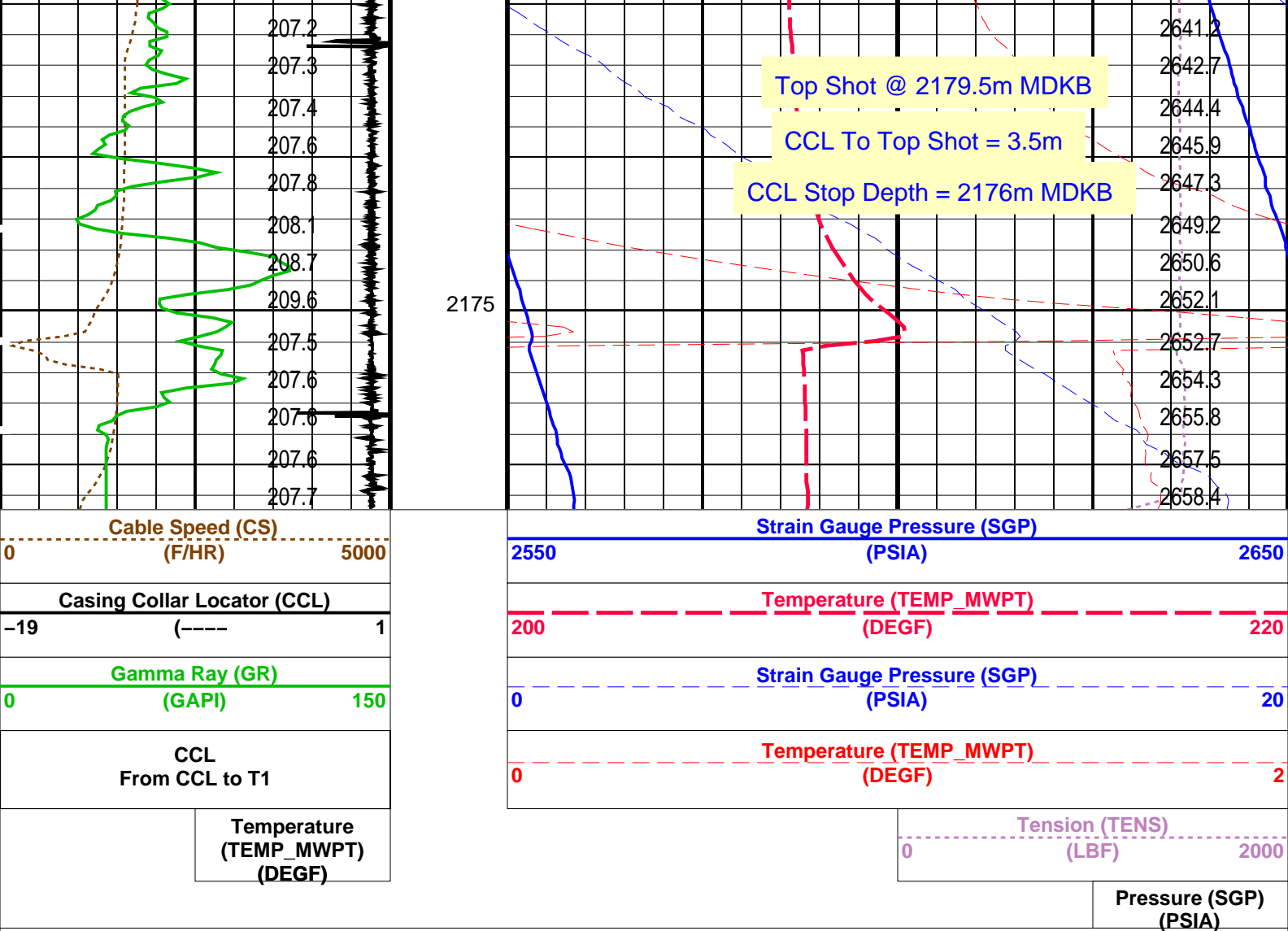
OP System Version: 14C0-302
MCM

MWP_GUN 14C0-302 MWPT-CA 14C0-302
MWGT-AA 14C0-302

PIP SUMMARY

Time Mark Every 60 S





PIP SUMMARY

Time Mark Every 60 S

Parameters

DLIS Name

Description

Value

MWPT-CA: MEASUREMENT WHILE PERFORATING TOOL
DEVI_FL_CORR Deviation Angle for Flow Line Correction
FLD Flow Line Density
MWPT_NULL_SOURCE MWPT NULL Temperature Source
MWPT_NULL_TEMP MWPT NULL Temperature

0 DEG
1 G/C3
TEMS
0.0 DEGC

Format: MWP Vertical Scale: 1:200

Graphics File Created: 09-Aug-2007 09:58

OP System Version: 14C0-302

MCM

MWP_GUN 14C0-302
MWGT-AA 14C0-302

MWPT-CA 14C0-302

Output DLIS Files

DEFAULT PERFO_031LUP

FN:30 PRODUCER 09-Aug-2007 09:58

Schlumberger

Gun Correlation Pass

Company: Esso Australia Pty Ltd.

Well: B-10

Output DLIS Files

DEFAULT

PERFO_030LUP

FN:29

PRODUCER

09-Aug-2007 09:48

2182.4 M

2151.6 M

OP System Version: 14C0-302

MCM

MWP_GUN14C0-302

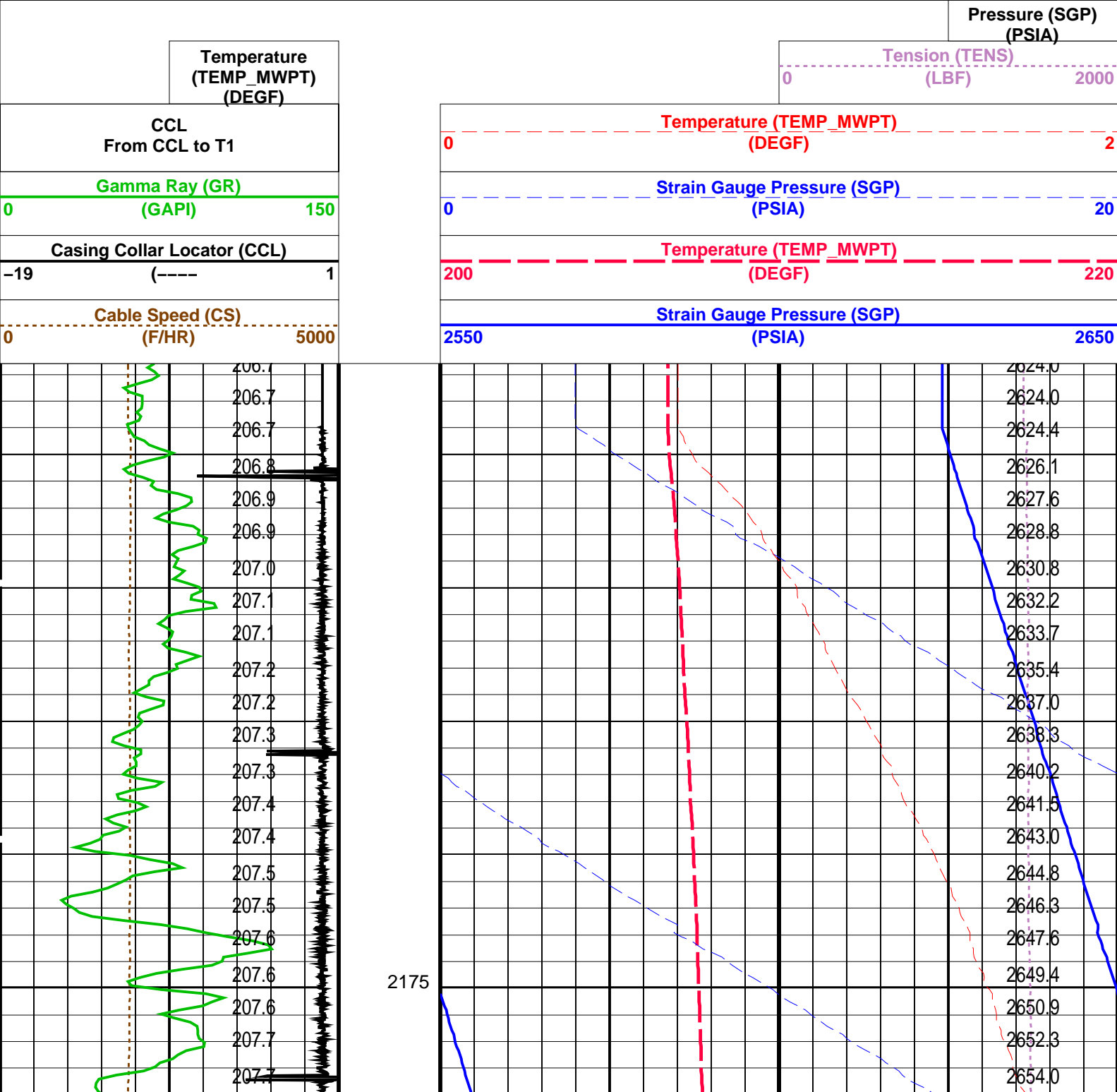
MWGT-AA14C0-302

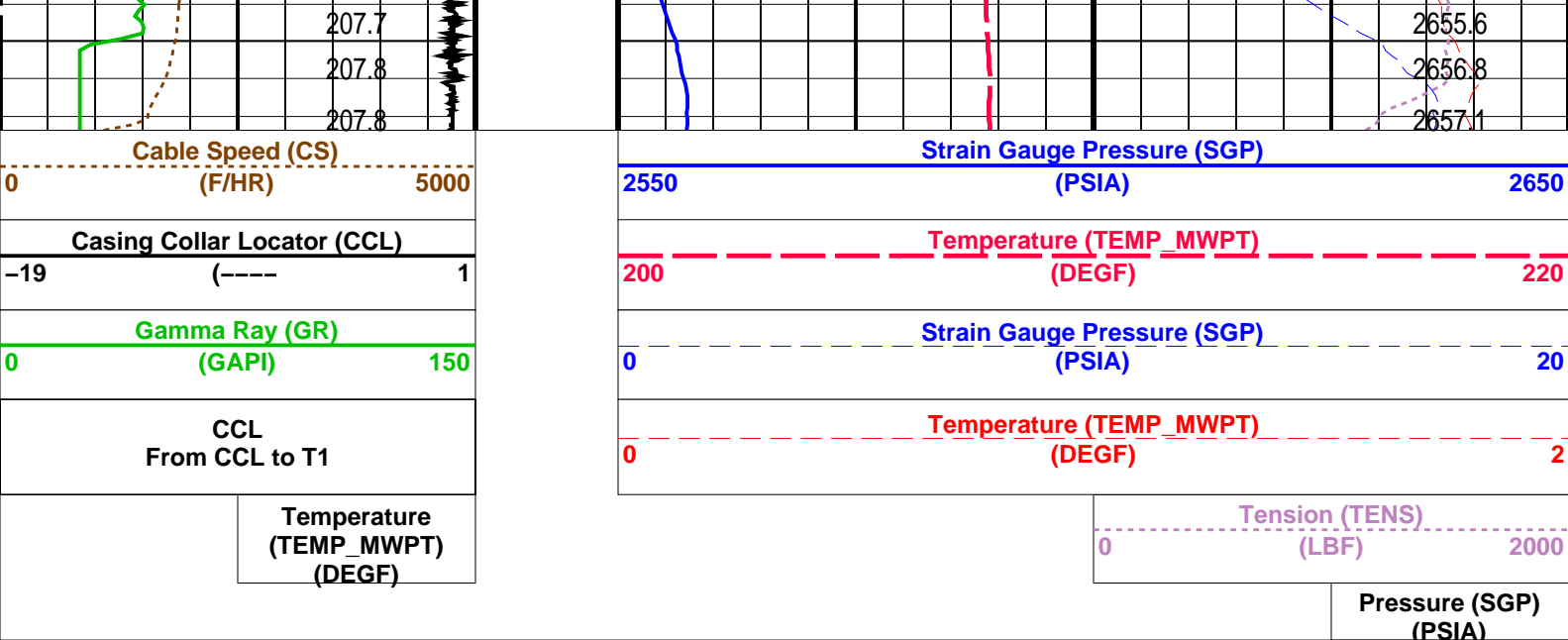
MWPT-CA

14C0-302

PIP SUMMARY

Time Mark Every 60 S





PIP SUMMARY


Time Mark Every 60 S

Parameters			
DLIS Name	Description	Value	
MWPT-CA: MEASUREMENT WHILE PERFORATING TOOL			
DEVI_FL_CORR	Deviation Angle for Flow Line Correction	0	DEG
FLD	Flow Line Density	1	G/C3
MWPT_NULL_SOURCE	MWPT NULL Temperature Source	TEMS	
MWPT_NULL_TEMP	MWPT NULL Temperature	0.0	DEGC

Format: MWP Vertical Scale: 1:200 Graphics File Created: 09-Aug-2007 09:48

OP System Version: 14C0-302			
MCM			
MWP_GUN	14C0-302	MWPT-CA	14C0-302
MWGT-AA	14C0-302		

Output DLIS Files			
DEFAULT	PERFO_030LUP	FN:29 PRODUCER	09-Aug-2007 09:48



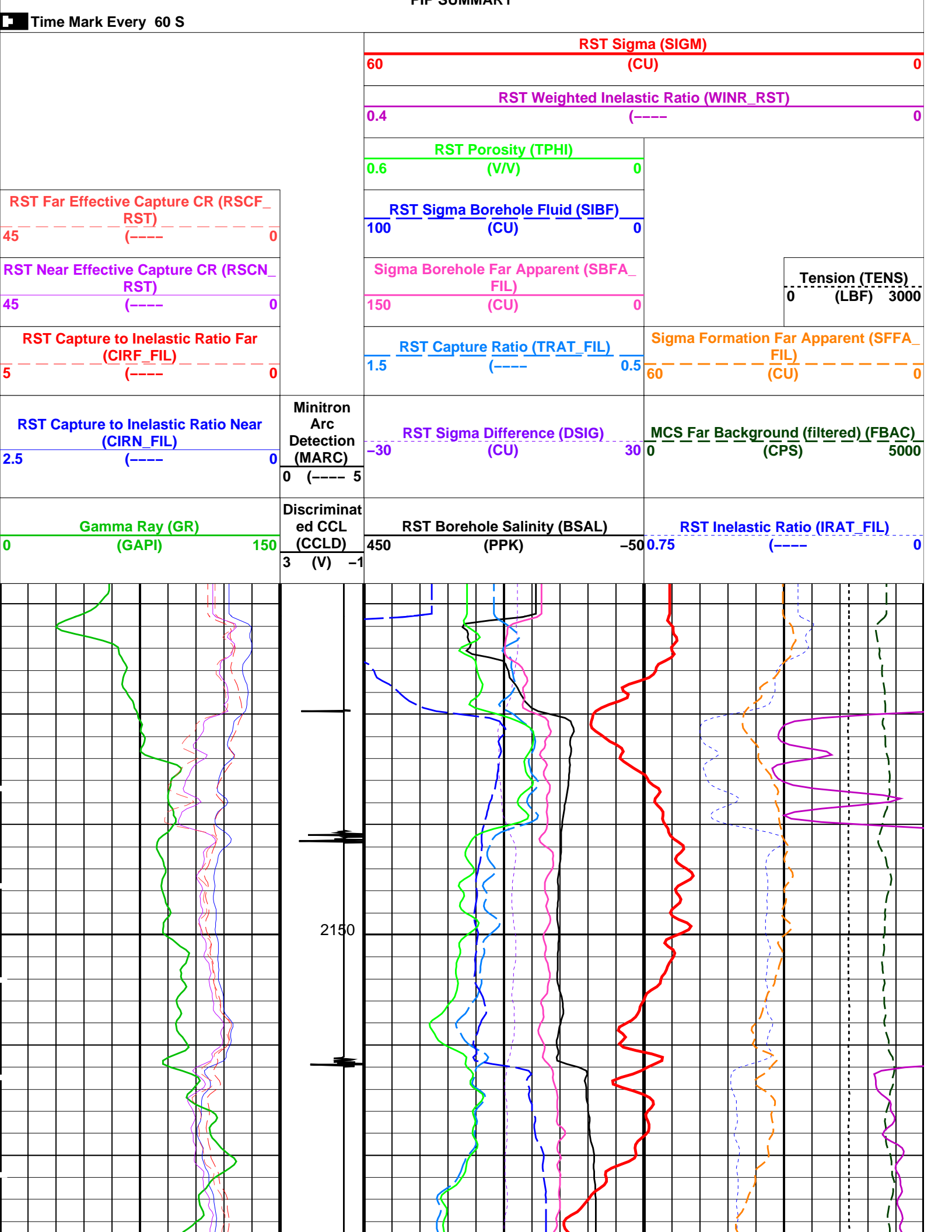
RST-C Sigma Pass # 2
900 ft/hr Shut-in

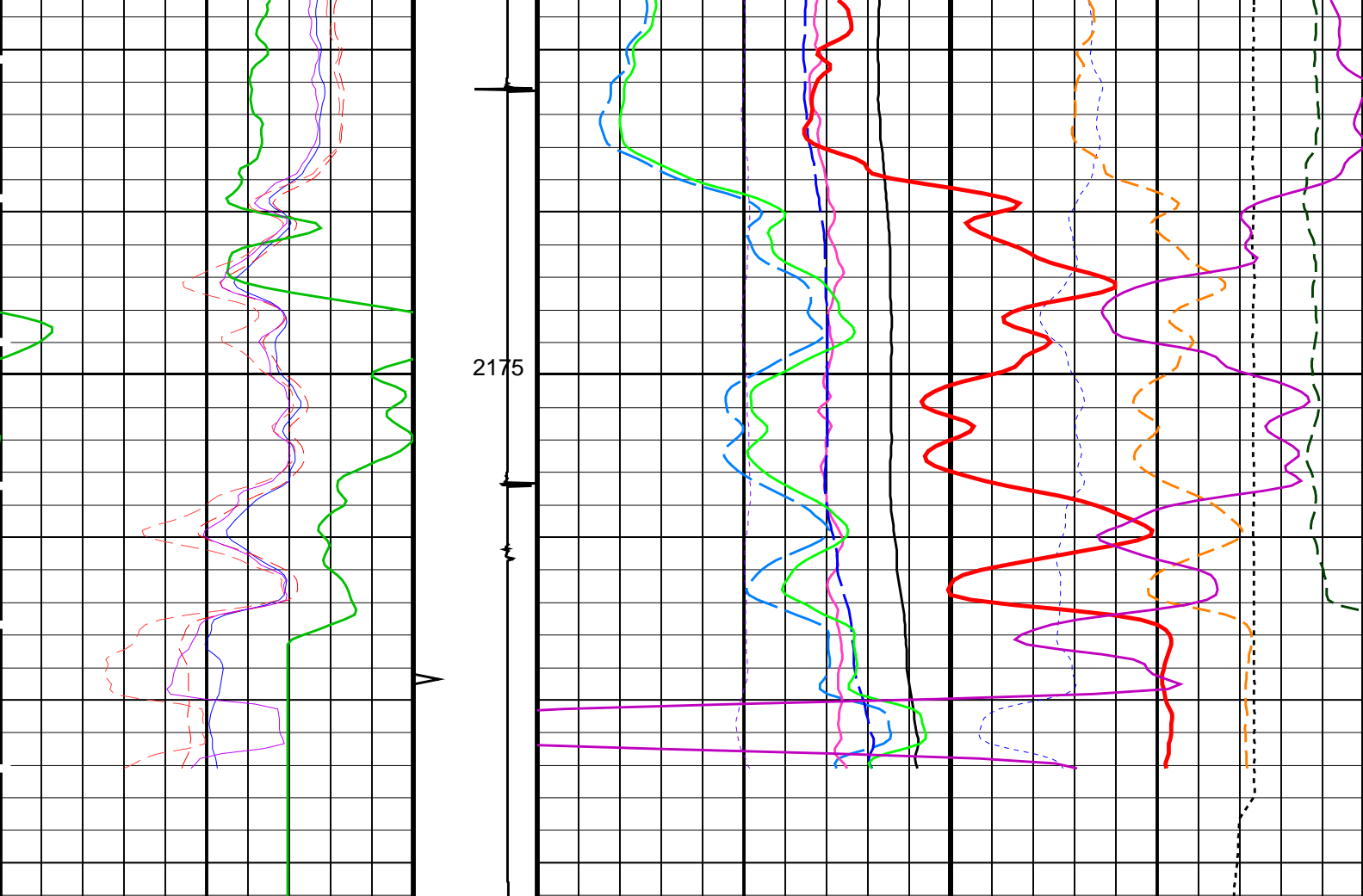
MAXIS Field Log

Company: Esso Australia Pty Ltd. Well: B-10

Output DLIS Files			
DEFAULT	RST_PSP_016LUP	FN:15 PRODUCER	08-Aug-2007 11:46 2191.1 M 2134.1 M
OP System Version: 14C0-302			
MCM			
RST-C	14C0-302	PSPT-A/B	14C0-302

PIP SUMMARY





<div>Gamma Ray (GR) (GAPI)</div> <div>0150</div>	<div>Discriminat ed CCL (CCLD)</div> <div>3 (V) -1</div>	<div>RST Borehole Salinity (BSAL) (PPK)</div> <div>450-50</div>	<div>RST Inelastic Ratio (IRAT_FIL) (----</div> <div>0.750</div>
<div>RST Capture to Inelastic Ratio Near (CIRN_FIL)</div> <div>2.5 (----) 0</div>	<div>Minitron Arc Detection (MARC)</div> <div>0 (---- 5</div>	<div>RST Sigma Difference (DSIG) (CU)</div> <div>-3030</div>	<div>MCS Far Background (filtered) (FBAC) (CPS)</div> <div>05000</div>
<div>RST Capture to Inelastic Ratio Far (CIRF_FIL)</div> <div>5 (----) 0</div>		<div>RST Capture Ratio (TRAT_FIL) (----)</div> <div>1.50.5</div>	<div>Sigma Formation Far Apparent (SFFA_ FIL) (CU)</div> <div>600</div>
<div>RST Near Effective Capture CR (RSCN_ RST)</div> <div>45 (----) 0</div>		<div>Sigma Borehole Far Apparent (SBFA_ FIL) (CU)</div> <div>1500</div>	<div>Tension (TENS) (LBF)</div> <div>03000</div>
<div>RST Far Effective Capture CR (RSCF_ RST)</div> <div>45 (----) 0</div>		<div>RST Sigma Borehole Fluid (SIBF) (CU)</div> <div>1000</div>	
		<div>RST Porosity (TPHI) (V/V)</div> <div>0.60</div>	
		<div>RST Weighted Inelastic Ratio (WINR_RST) (----</div> <div>0.40</div>	
		<div>RST Sigma (SIGM) (CU)</div> <div>600</div>	

PIP SUMMARY

Time Mark Every 60 S


Parameters

Parameters			
DLIS Name	Description	Value	
RST-C: Reservoir Saturation Pro Tool C			
AIRB	RST Air Borehole	No	
BHS	Borehole Status	CASED	
BSALOPT	RST Borehole Salinity Option	Unknown	
BSFL	RST Borehole Salinity Filter Length	51	
DFPC	RST Depth Filter Processing Constant	One	
DFPC_TDTL	RST Depth Filter Processing Constant (TDT-like)	Two	
MATR	Rock Matrix for Neutron Porosity Corrections	SANDSTONE	
NORM_IRAT_RST	RST Normalized Inelastic Ratio	0.48	CU
NORM_SIGM_RST	RST Normalized Sigma	30	
RGAI	Near/Far Gain Calibration Ratio	1	
SMBMO	RST Sigma Mode Background Minित्रon Off	No	
TIER_SIGM	RST Sigma Acquisition Mode	0_RST_Sigma	
PSPT-A/B: Production Services Logging Platform			
BHS	Borehole Status	CASED	
MATR	Rock Matrix for Neutron Porosity Corrections	SANDSTONE	
System and Miscellaneous			
BS	Bit Size	8.000	IN
BSAL	Borehole Salinity	-50000.00	PPM
CSIZ	Current Casing Size	7.000	IN
CWEI	Casing Weight	26.00	LB/F

Format: RST_SIG_ANSW
Vertical Scale: 1:200
Graphics File Created: 08-Aug-2007 11:46

OP System Version: 14C0-302			
MCM			
RST-C	14C0-302	PSPT-A/B	14C0-302

Output DLIS Files			
DEFAULT	RST_PSP_016LUP	FN:15	PRODUCER 08-Aug-2007 11:46



RST-C Sigma Pass # 1
900 ft/hr Shut-in

MAXIS Field Log

Company: Esso Australia Pty Ltd.
Well: B-10

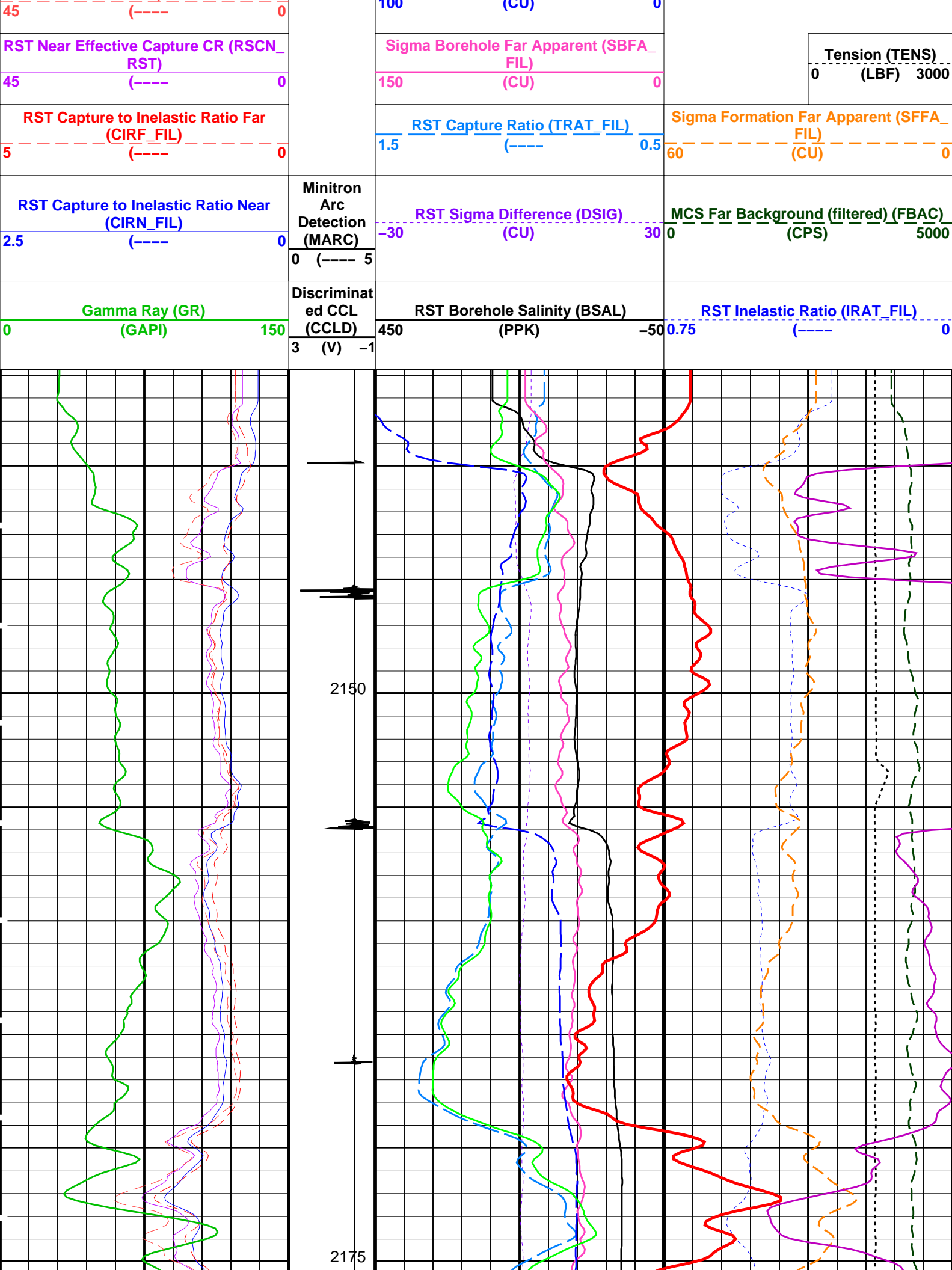
Output DLIS Files					
DEFAULT	RST_PSP_014LUP	FN:13	PRODUCER	08-Aug-2007 11:29	2191.1 M 2135.7 M
OP System Version: 14C0-302					
MCM					
RST-C	14C0-302	PSPT-A/B	14C0-302		

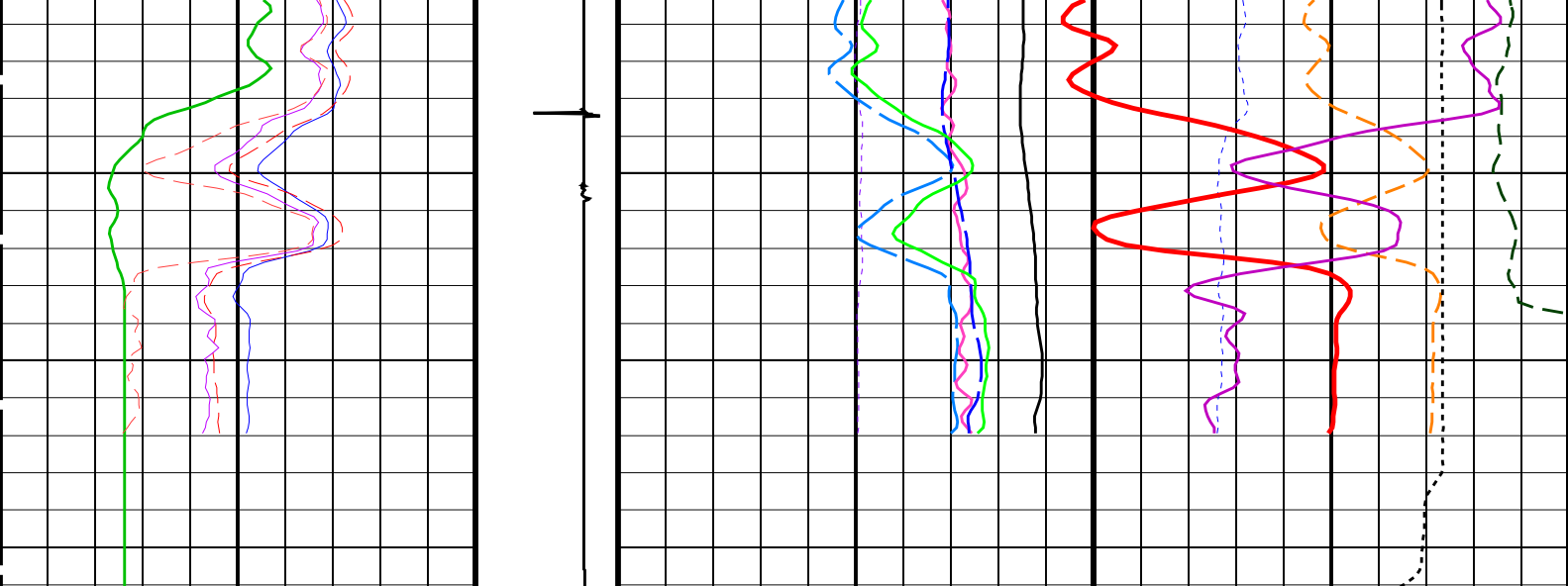
PIP SUMMARY

Time Mark Every 60 S

		RST Sigma (SIGM)	
60	(CU)	0	
		RST Weighted Inelastic Ratio (WINR_RST)	
0.4	(----	0	
		RST Porosity (TPHI)	
0.6	(V/V)	0	
		RST Sigma Borehole Fluid (SIBF)	
122	(CU)	0	

RST Far Effective Capture CR (RSCF_RST)





<div>Gamma Ray (GR) (GAPI)</div> <div>0150</div>	<div>Discriminat ed CCL (CCLD) (V)</div> <div>3-1</div>	<div>RST Borehole Salinity (BSAL) (PPK)</div> <div>450-50</div>	<div>RST Inelastic Ratio (IRAT_FIL) (----)</div> <div>0.750</div>
<div>RST Capture to Inelastic Ratio Near (CIRN_FIL) (----)</div> <div>2.50</div>	<div>Minitron Arc Detection (MARC) (----)</div> <div>05</div>	<div>RST Sigma Difference (DSIG) (CU)</div> <div>-3030</div>	<div>MCS Far Background (filtered) (FBAC) (CPS)</div> <div>05000</div>
<div>RST Capture to Inelastic Ratio Far (CIRF_FIL) (----)</div> <div>50</div>		<div>RST Capture Ratio (TRAT_FIL) (----)</div> <div>1.50.5</div>	<div>Sigma Formation Far Apparent (SFFA_FIL) (CU)</div> <div>600</div>
<div>RST Near Effective Capture CR (RSCN_RST) (----)</div> <div>450</div>		<div>Sigma Borehole Far Apparent (SBFA_FIL) (CU)</div> <div>1500</div>	<div>Tension (TENS) (LBF)</div> <div>03000</div>
<div>RST Far Effective Capture CR (RSCF_RST) (----)</div> <div>450</div>		<div>RST Sigma Borehole Fluid (SIBF) (CU)</div> <div>1000</div>	
		<div>RST Porosity (TPHI) (V/V)</div> <div>0.60</div>	
		<div>RST Weighted Inelastic Ratio (WINR_RST) (----)</div> <div>0.40</div>	
		<div>RST Sigma (SIGM) (CU)</div> <div>600</div>	

PIP SUMMARY


Time Mark Every 60 S

Parameters

DLIS Name	Description	Value	
RST-C: Reservoir Saturation Pro Tool C			
AIRB	RST Air Borehole	No	
BHS	Borehole Status	CASED	
BSALOPT	RST Borehole Salinity Option	Unknown	
BSFL	RST Borehole Salinity Filter Length	51	
DFPC	RST Depth Filter Processing Constant	One	
DFPC_TDTL	RST Depth Filter Processing Constant (TDT-like)	Two	
MATR	Rock Matrix for Neutron Porosity Corrections	SANDSTONE	
NORM_IRAT_RST	RST Normalized Inelastic Ratio	0.48	
NORM_SIGM_RST	RST Normalized Sigma	30	CU
RGAI	Near/Far Gain Calibration Ratio	1	
SMBMO	RST Sigma Mode Background Minitron Off	No	
TIER_SIGM	RST Sigma Acquisition Mode	0_RST_Sigma	
PSPT-A/B: Production Services Logging Platform			

BHS	Borehole Status	CASED
MATR	Rock Matrix for Neutron Porosity Corrections	SANDSTONE
BS	System and Miscellaneous	8.000 IN
BSAL	Bit Size	-50000.00 PPM
CSIZ	Borehole Salinity	7.000 IN
CWEI	Current Casing Size	26.00 LB/F
	Casing Weight	

Format: RST_SIG_ANSW		Vertical Scale: 1:200		Graphics File Created: 08-Aug-2007 11:29	
OP System Version: 14C0-302					
MCM					
RST-C	14C0-302	PSPT-A/B		14C0-302	
Output DLIS Files					
DEFAULT	RST_PSP_014LUP	FN:13	PRODUCER	08-Aug-2007 11:29	

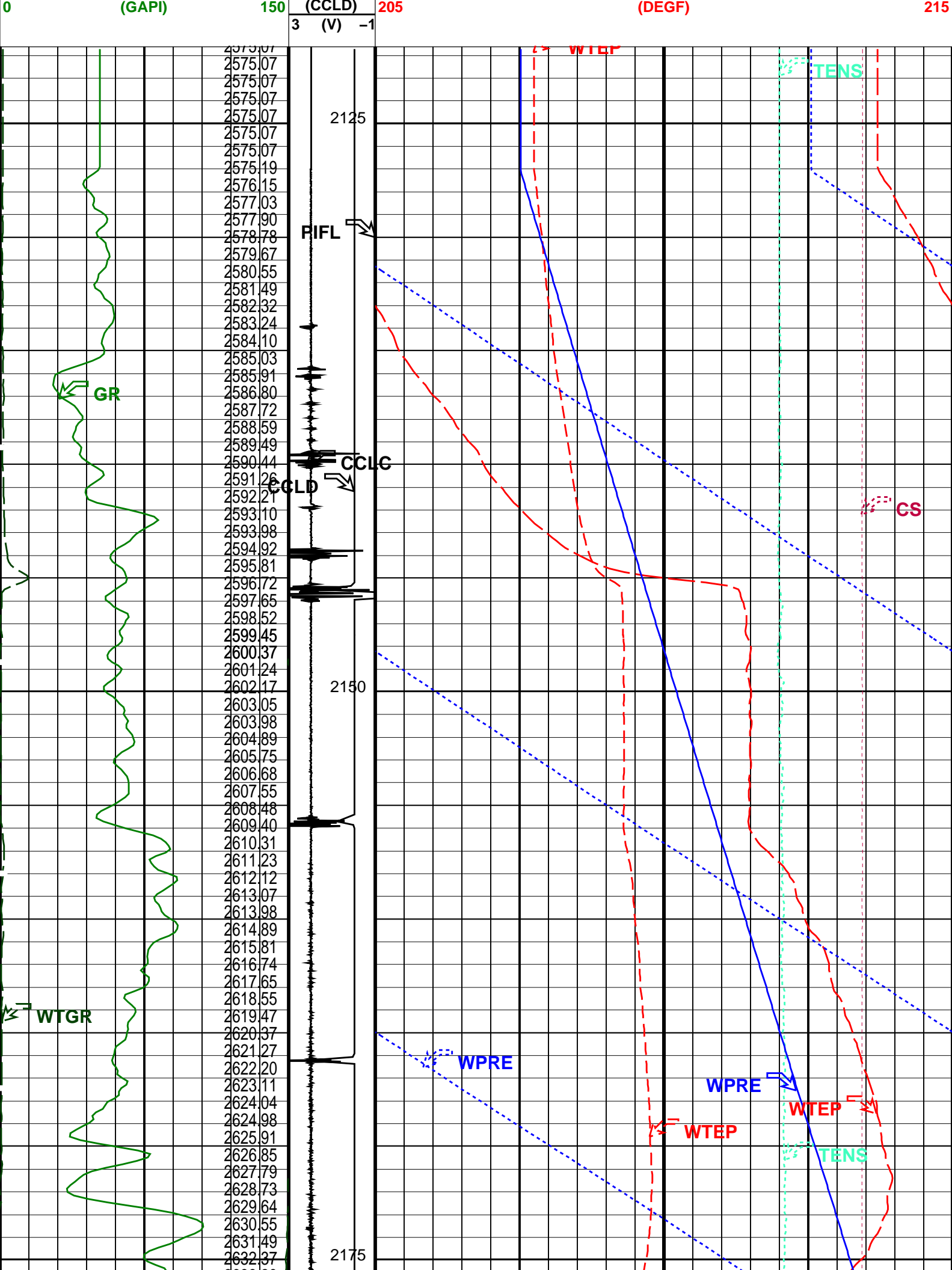
	<div>Gamma-Ray Pass 1800 ft/hr Shut-in</div>
MAXIS Field Log	

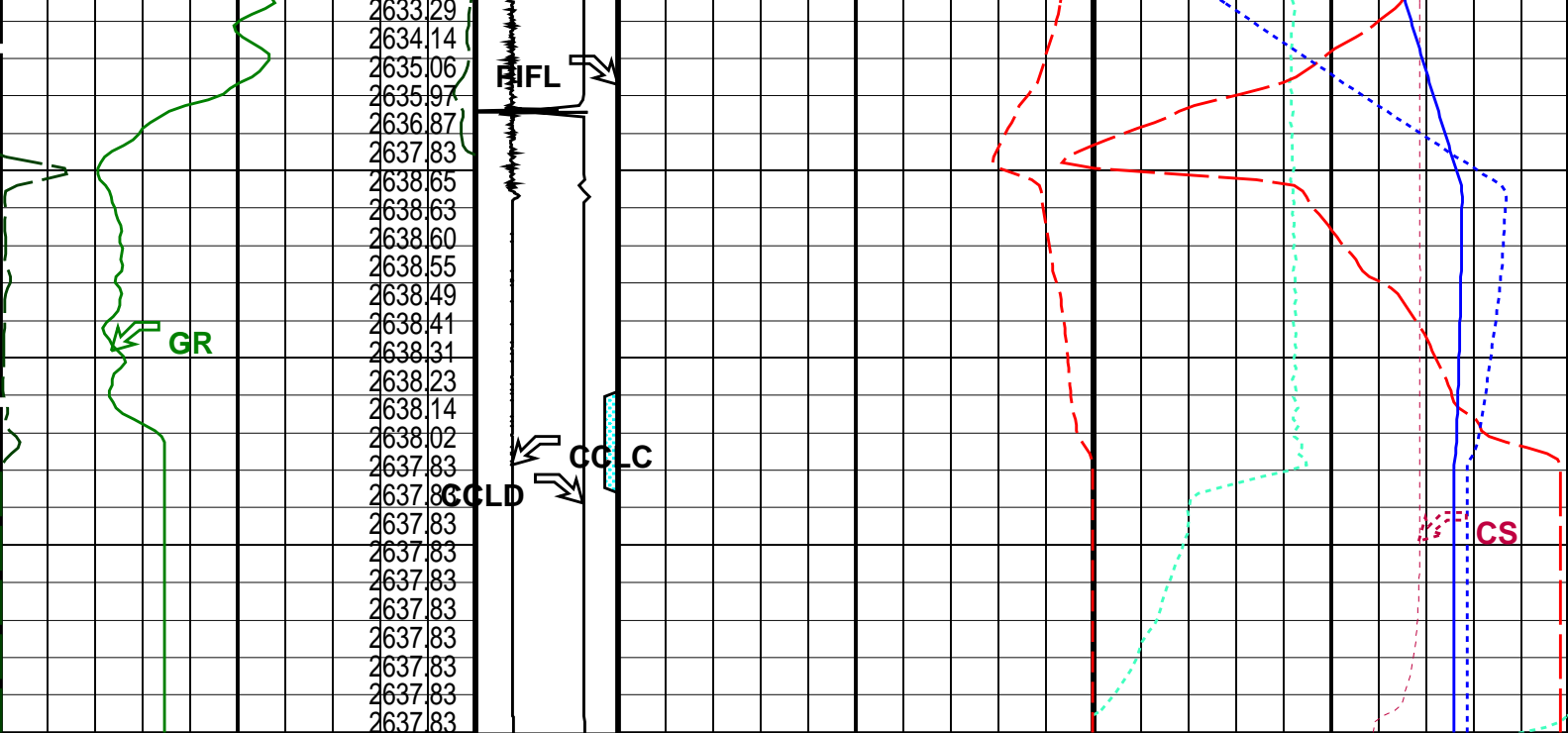
Input DLIS Files					
DEFAULT	RST_PSP_012LUP	FN:11	PRODUCER	08-Aug-2007 11:12	2194.3 M 2125.8 M
Output DLIS Files					
DEFAULT	RST_PSP_018PUP	FN:17	PRODUCER	08-Aug-2007 12:05	2195.0 M 2121.6 M

OP System Version: 14C0-302					
MCM					
RST-C	14C0-302	PSPT-A/B	14C0-302		

PIP SUMMARY					
Time Mark Every 60 S					

			Cable Speed (CS) 0 (F/HR) 5000		
			Tension (TENS) 0 (LBF) 1000		
			Amplified Well Pressure (WPRE) 0 (PSIA) 20		
Well Pressure (WPRE) (PSIA)		Perfo Zone From PERFO_CURVE to D3T	Well Pressure (WPRE) 2550 (PSIA) 2650		
Well Temperature Gradient (WTGR) (DGFM)		Computed CCL (CCLC) 1 (V) -3	Well Temperature (WTEP) 0 (DEGF) 2		
Gamma Ray (GR)		Discriminat ed CCL	Well Temperature (WTEP)		





Gamma Ray (GR) (GAPI)		Discriminat ed CCL (CCLD)	Well Temperature (WTEP) (DEGF)	
0	150	3 (V) -1	205	215
Well Temperature Gradient (WTGR) (DGFM)		Computed CCL (CCLC)	Well Temperature (WTEP) (DEGF)	
0	10	1 (V) -3	0	2
Well Pressure (WPRES) (PSIA)		Perfo Zone From PERFO_ CURVE to D3T	Well Pressure (WPRES) (PSIA)	
			2550	2650
			Amplified Well Pressure (WPRES) (PSIA)	
			0	20
			Tension (TENS) (LBF)	
			0	1000
			Cable Speed (CS) (F/HR)	
			0	5000

PIP SUMMARY

Time Mark Every 60 S

Format: PSP_1_1 Vertical Scale: 1:200 Graphics File Created: 08-Aug-2007 12:05

OP System Version: 14C0-302

MCM

RST-C 14C0-302 PSPT-A/B 14C0-302

Parameters		
DLIS Name	Description	Value
System and Miscellaneous		
DO	Depth Offset for Playback	0.8 M
PP	Playback Processing	NORMAL

Input DLIS Files

DEFAULT	RST PSP 012LUP	FN:11	PRODUCER	08-Aug-2007 11:12	2194.3 M	2125.8 M
---------	----------------	-------	----------	-------------------	----------	----------

Output DLIS Files

DEFAULT

RST_PSP_018PUP

FN:17

PRODUCER

08-Aug-2007 12:05

Company: **Esso Australia Pty Ltd.**

Schlumberger

Well: **B-10**

Field: **Bream B**

Rig : **Crane / Prod4**

Country: **Australia**

RST-C Sigma Survey

2 1/8" Powerjet Perforation Record

7" HPI PSP Plug Setting Record