



Company: Esso Australia Pty Ltd.

Well: B-17
Field: Bream B
Rig: Crane / Prod4 Country: Australia

Crane / Prod4

Rig: Field: Location: Well: Company:

Esso Australia Pty Ltd.

2 1/8" 45deg Phased Powerjet
Perforation Record
7" HPI PSP Plug Setting Record

LOCATION

Gippsland Basin Bass Strait

Elev.: K.B. 47.17 m
G.L. -77 m
D.F. 47.17 m

Permanent Datum: M.S.L.
Log Measured From: D.F.
Drilling Measured From: D.F.

Elev.: 0 m
47.2 m above Perm. Datum

State: Victoria

Max. Well Deviation 70 deg

Longitude 148°06'15.37"E

Latitude 038°35'40.34S

Logging Date				29-Jul-2007							
Run Number				1 thru 5							
Depth Driller				4000 m							
Schlumberger Depth				3925 m							
Bottom Log Interval				3925 m							
Top Log Interval				3850 m							
Casing Fluid Type				Production Fluids							
Salinity											
Density											
Fluid Level											
BIT/CASING/TUBING STRING											
Bit Size				8.500 in							
From											
To											
Casing/Tubing Size				7.000 in							
Weight				26 lbm/ft							
Grade				L-80							
From				27 m							
To				4940 m							
Maximum Recorded Temperatures				203 degF							
Logger On Bottom				29-Jul-2007		10:00					
Unit Number		Location		889		Prod4					
Recorded By				G Wright,S Gilbert.							
Witnessed By				G Rimmer.							

Oil Density				Run 1							
Water Salinity											
Gas Gravity											
Bo											
Bw											
1/Bq											
Bubble Point Pressure											
Bubble Point Temperature											
Solution GOR											
Maximum Deviation				70 deg							
CEMENTING DATA											
Primary/Squeeze				Primary							
Casing String No											
Lead Cement Type											
Volume											
Density											
Water Loss											
Additives											
Tail Cement Type											
Volume											
Density											
Water Loss											
Additives											
Expected Cement Top											
Logging Date											
Run Number											
Depth Driller											
Schlumberger Depth											
Bottom Log Interval											
Top Log Interval											
Casing Fluid Type											
Salinity											
Density											
Fluid Level											
BIT/CASING/TUBING STRING											
Bit Size											
From											
To											
Casing/Tubing Size											
Weight											
Grade											
From											
To											
Maximum Recorded Temperatures											
Logger On Bottom				Time							
Unit Number		Location									
Recorded By											
Witnessed By											

DEPTH SUMMARY LISTING

Date Created: 24-JUL-2007 13:50:20

Depth System Equipment

Depth Measuring Device	Tension Device	Logging Cable
Type: IDW-EB Serial Number: 6373 Calibration Date: 4-Jan-2007 Calibrator Serial Number: 9 Calibration Cable Type: 2-32ZT Wheel Correction 1: -2 Wheel Correction 2: -4	Type: PSDS/OSDS Serial Number: 325357 Calibration Date: 24-July-2007 Calibrator Serial Number: 1174 Calibration Gain: 0.89 Calibration Offset: 230.00	Type: 2-32ZT Serial Number: 24425 Length: 6326 M Conveyance Method: Wireline Rig Type: Offshore_Fixed

Depth Control Parameters

Log Sequence:	Subsequent Log In the Well
Reference Log Name:	Solar Composite Log
Reference Log Run Number:	
Reference Log Date:	

Depth Control Remarks

1. IDW used as Primary Depth control.
2. Z-chart used as Secondary depth control
3.
4.
5.
6.

DISCLAIMER

THE USE OF AND RELIANCE UPON THIS RECORDED-DATA BY THE HEREIN NAMED COMPANY (AND ANY OF ITS AFFILIATES, PARTNERS, REPRESENTATIVES, AGENTS, CONSULTANTS AND EMPLOYEES) IS SUBJECT TO THE TERMS AND CONDITIONS AGREED UPON BETWEEN SCHLUMBERGER AND THE COMPANY, INCLUDING: (a) RESTRICTIONS ON USE OF THE RECORDED-DATA; (b) DISCLAIMERS AND WAIVERS OF WARRANTIES AND REPRESENTATIONS REGARDING COMPANY'S USE OF AND RELIANCE UPON THE RECORDED-DATA; AND (c) CUSTOMER'S FULL AND SOLE RESPONSIBILITY FOR ANY INFERENCE DRAWN OR DECISION MADE IN CONNECTION WITH THE USE OF THIS RECORDED-DATA.

OTHER SERVICES1

OS1: None.

REMARKS: RUN NUMBER 1

Log correlated to ExxonMobil composite Log supplied with logging program.

Maximum well deviation = 70 degrees at 3059m MDKB.

Objectives: Perforate the intervals 3889m to 3893m MDKB and 3839m to 3845m MDKB

Using 2 1/8" 45 deg Phased Powerjet guns . Set 7" HPI PSP Plug with

Top of Seal @ 3904m MDKB .

SBHT: 203 degf SBHP: 2074 psia

PSP Plug Top of Seal = 3904m MDKB

CCL to Top of Seal = 13 m

CCL to Top Shot=4.2 m					
CCL Stop Depth =3891m MDKB					
Gun#1			Gun#2		
Top Shot @ 3889m MDKB			Top Shot @ 3839m MDKB		
CCL to Top Shot=4.2 m			CCL to Top Shot=3.5 m		
CCL Stop Depth=3884.8 m MDKB			CCL Stop Depth=3835.5 m MDKB		
Crew : J Light & P Lawrence.					
RUN 1			RUN 2		
SERVICE ORDER #: PROGRAM VERSION: FLUID LEVEL:			SERVICE ORDER #: PROGRAM VERSION: FLUID LEVEL:		
AUSL07484946 14C0-302					
LOGGED INTERVAL	START	STOP	LOGGED INTERVAL	START	STOP
EQUIPMENT DESCRIPTION					
RUN 1			RUN 2		
SURFACE EQUIPMENT			SURFACE EQUIPMENT		
WITM (SHM)			MWPM-. 3000		
DOWNHOLE EQUIPMENT			DOWNHOLE EQUIPMENT		
AH-SWBS-B AH-SWBS-B 763			AH-SWBS-B 761 AH-SWBS-B 761		
16.97			14.98		
MH-SWHS-A MH-SWHS-A 726			AH-SWBS-B 762 AH-SWBS-B 762		
16.27			14.29		
CCL-L 4191 CCL-L 4191			AH-SWBS-B 763 AH-SWBS-B 763		
15.88			13.61		
Tension CCL					
TOOL ZERO					
AH-HPI Electro-Hydrostatic Setting Tool AH-HPI Electro-Hydrostatic Setting Tool			MH-SWHS-A 726		
15.42			12.92		
			AH-124 1001		
			12.59		
			MWGT-AA 69 MWPG-AA 69 MWGH-AA 69		
			12.39		
			MWPG GR		
			2.41		
			MWPT-CA 74 MWPH-AA 74 MWPS-AA 74		
			11.41		
			CCL SMWP Pres SMWP Temp Tension		
			TOOL ZERO		
			AH-Flex Joint 41 AH-Flex Joint 41		
			8.59		
			AH-122 7002		
			8.03		
			AH-SAH-G 1035 AH-SAH-G 1035		
			7.93		
			MPD-MB 268 MPD-MB 268		
			7.47		
			AH-ESIC 15042003 AH-ESIC 15042003		
			6.93		

SHM_GUN
GUN-2.13" HPI Long Life PSP Plug for 7" casing

3.00

TOOL BOTTOM

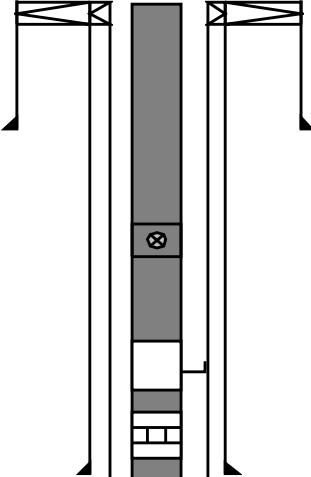
MAXIMUM STRING DIAMETER 2.13 IN
MEASUREMENTS RELATIVE TO TOOL ZERO
ALL LENGTHS IN METERS

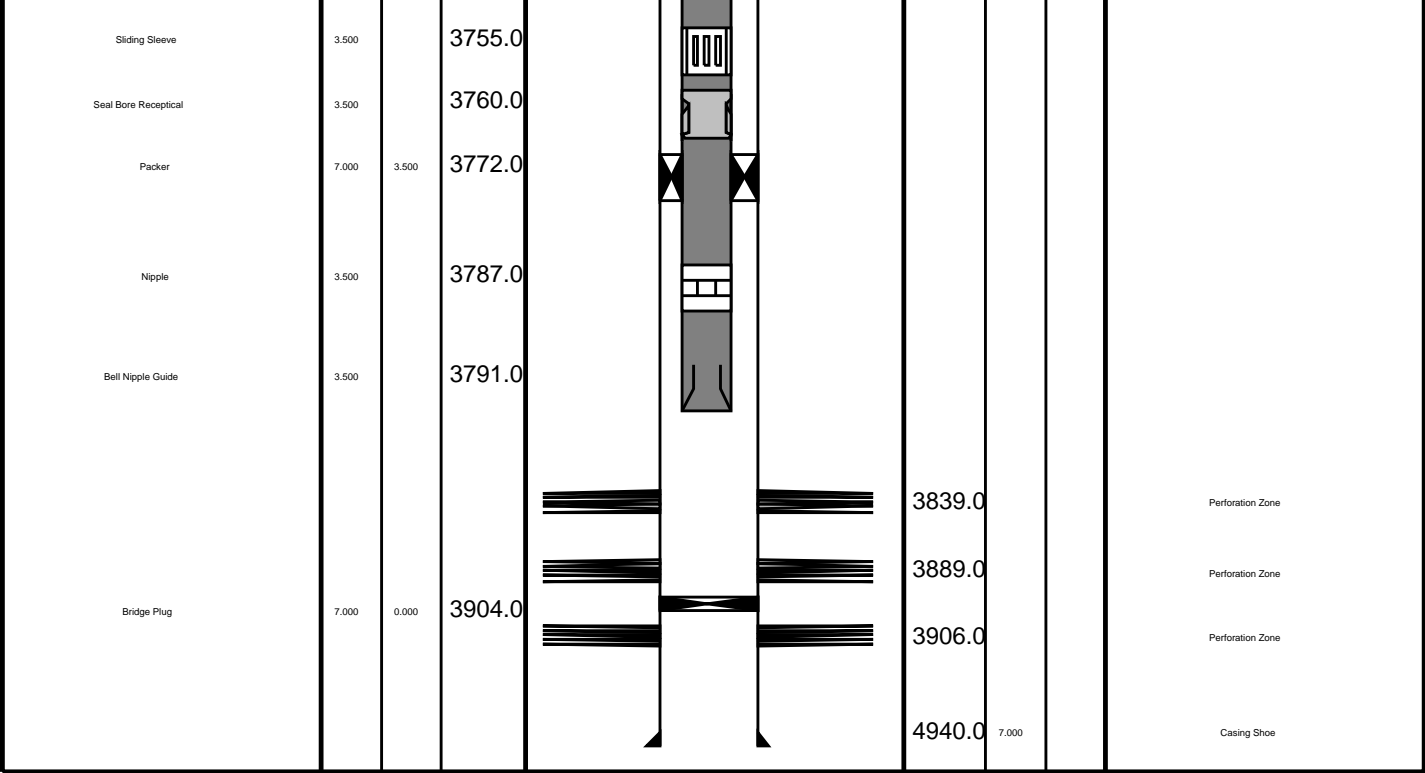
MWP_GUN
GUN-6 mtr 2 1/8" Phased Powerjet Gun 1

6.48

TOOL BOTTOM

MAXIMUM STRING DIAMETER 2.13 IN
MEASUREMENTS RELATIVE TO TOOL ZERO
ALL LENGTHS IN METERS

Production String	(in)		(m)	Well Schematic	(m)	(in)		Casing String
	OD	ID	MD		MD	OD	ID	
Tubing	3.500		26.2		27.0	7.000		Casing String
					27.0	9.625	7.000	Casing String
					27.1	20.000	9.625	Liner Hanger
					26.0	20.000		Casing String
					179.0	20.000		Casing Shoe
Shutin Valve	3.500		448.0					
Gas Lift Mandrel	3.500		688.0					
Nipple	3.500		704.5					
					840.0	9.625		Casing Shoe



Job Events Summary

MAXIS Field Log

Schlumberger Job Event Summary

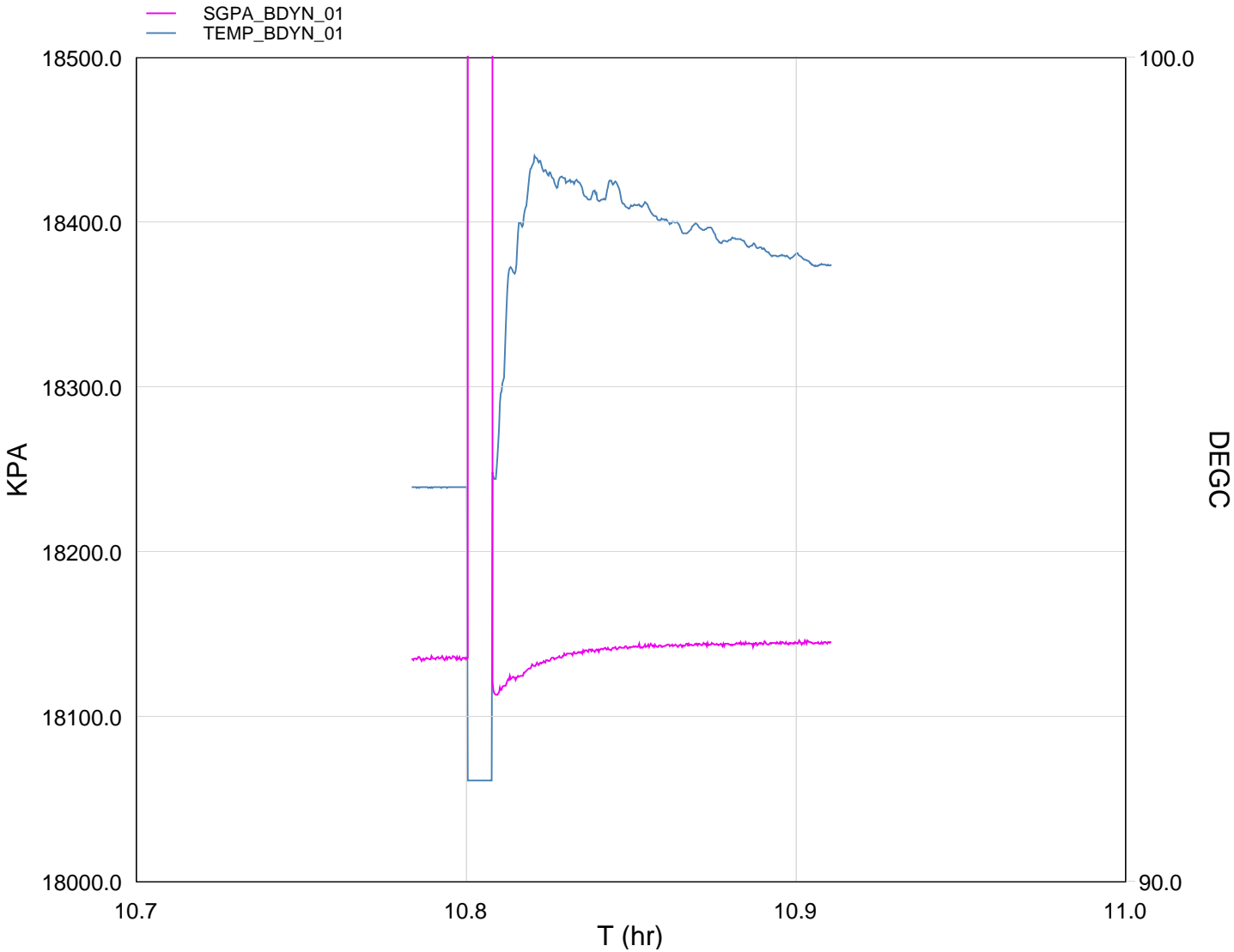
Time	Elapsed Time	Depth (M)	File
Simulated Log	29-Jul-2007 9:25	000:24	PSP_004LUP
Log Pass (down)	29-Jul-2007 11:01	001:07	5.0 - 3969.0 PSP_006LDP
Log Pass (up)	29-Jul-2007 12:10	000:27	3968.8 - 3717.6 PSP_007LUP
Log Pass (up)	29-Jul-2007 12:54	000:55	3198.6 - 2.0 PSP_009LUP
Simulated Log	29-Jul-2007 14:25	000:06	PERFO_011LUP
Log Pass (down)	30-Jul-2007 9:22	000:25	12.0 - 12.3 PERFO_015LDP
Log Pass (down)	31-Jul-2007 9:21	000:55	46.8 - 3849.4 PERFO_016LDP
Log Pass (up)	31-Jul-2007 10:16	000:03	3849.6 - 3787.1 PERFO_017LUP
Log Pass (up)	31-Jul-2007 10:26	000:17	3930.4 - 3872.0 PERFO_018LUP
Log Pass (up)	31-Jul-2007 10:44	000:04	3895.5 - 3853.6 PERFO_019LUP
Log Pass (up)	31-Jul-2007 11:13	000:05	37.2 - 2.7 PERFO_020LUP
Simulated Log	31-Jul-2007 11:51	000:05	PERFO_022LUP
Log Pass (down)	31-Jul-2007 12:32	000:20	1129.6 - 2225.0 PERFO_023LDP
Log Pass (down)	31-Jul-2007 12:52	000:25	2173.8 - 3892.8 PERFO_024LDP
Log Pass (up)	31-Jul-2007 13:18	000:03	3892.3 - 3861.7 PERFO_025LUP
Log Pass (up)	31-Jul-2007 13:24	000:10	3897.0 - 3846.7 PERFO_026LUP
Station Log	31-Jul-2007 13:27	000:04	3884.8 - 0.5 PERFO_027LUP

Station Log	31-Jul-2007 13:27 000:04 3884.8 - 0.3 PERFO_027LTP
Simulated Log	1-Aug-2007 8:36 000:02 PERFO_030LUP
Log Pass (down)	1-Aug-2007 9:18 000:00 756.5 - 760.9 PERFO_031LDP
Log Pass (down)	1-Aug-2007 9:19 001:12 800.6 - 3882.1 PERFO_032LDP
Log Pass (up)	1-Aug-2007 10:31 000:04 3879.5 - 3812.6 PERFO_033LUP
Log Pass (up)	1-Aug-2007 10:38 000:03 3853.1 - 3832.6 PERFO_034LUP
Log Pass (up)	1-Aug-2007 10:43 000:14 3854.2 - 3797.0 PERFO_035LUP
Station Log	1-Aug-2007 10:46 000:08 3835.5 - 1.2 PERFO_036LTP

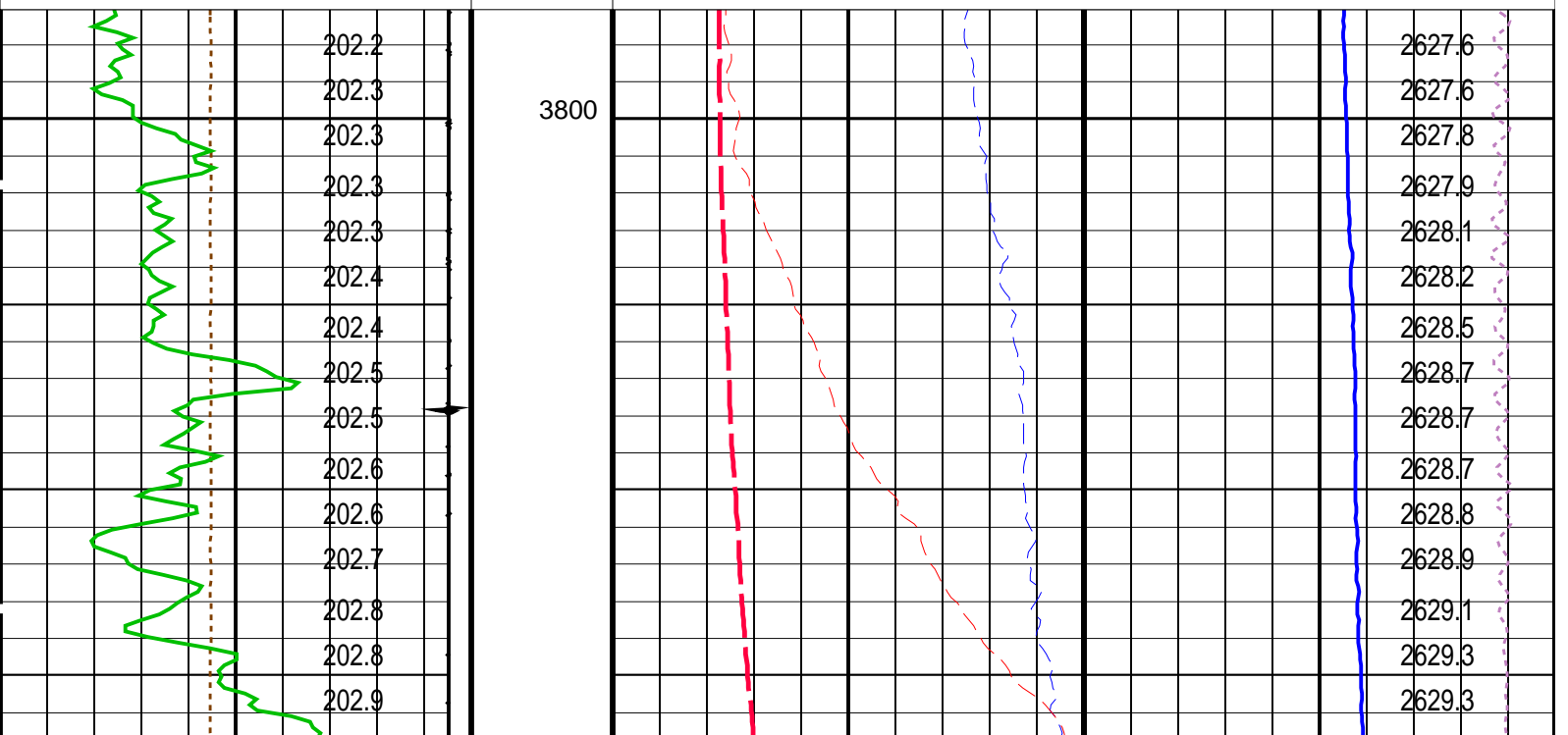


GUN # 1
3839m to 3845m MDKB.

MAXIS Field Log



TIME DEGF PSIA



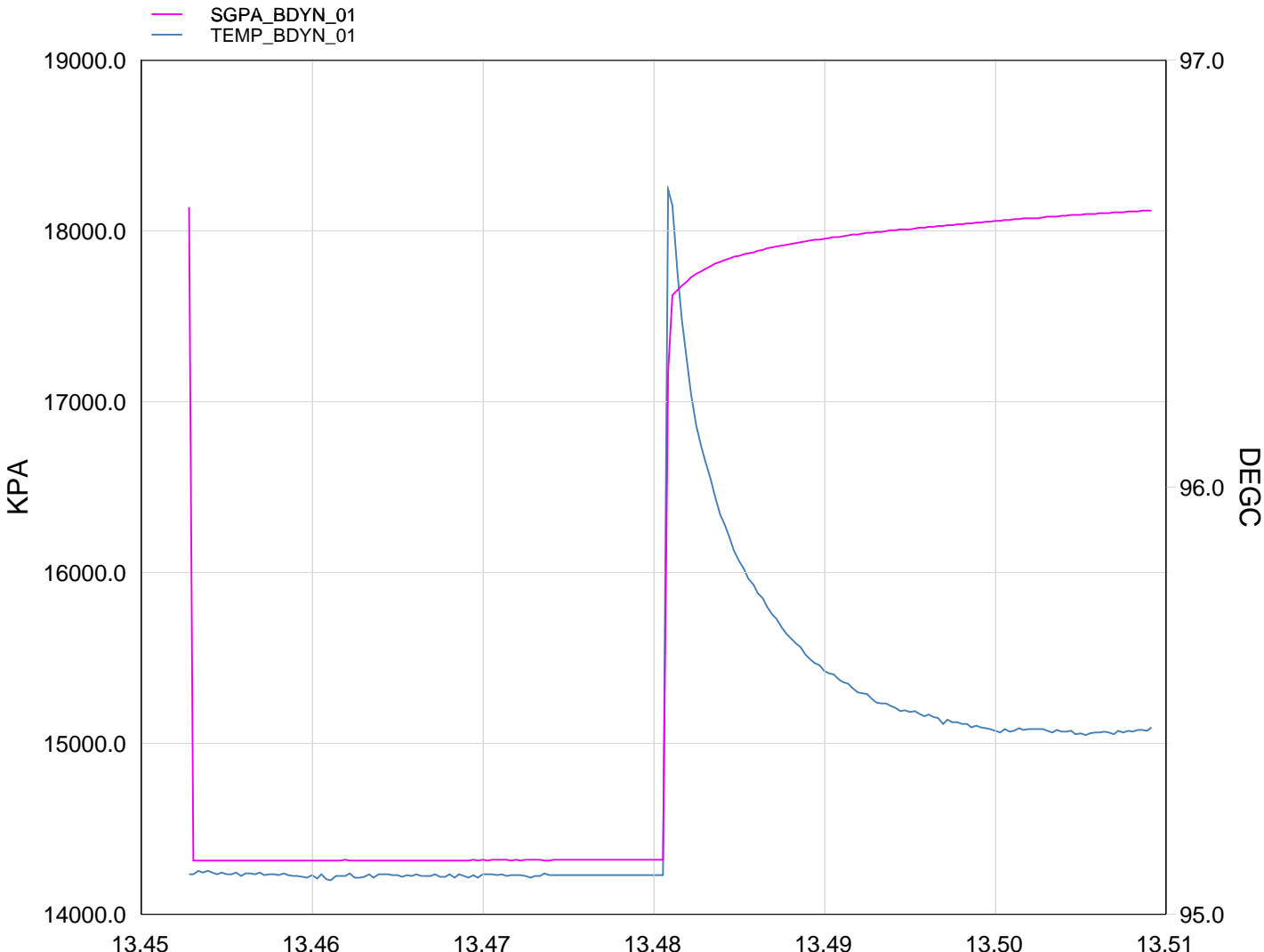
DLIS Name	Description	Value
MWPT-CA: MEASUREMENT WHILE PERFORATING TOOL		
DEVI_FL_CORR	Deviation Angle for Flow Line Correction	0 DEG
FLD	Flow Line Density	1 G/C3
MWPT_NULL_SOURCE	MWPT NULL Temperature Source	TEMS
MWPT_NULL_TEMP	MWPT NULL Temperature	0.0 DEGC

Format: MWP		Vertical Scale: 1:200		Graphics File Created: 01-Aug-2007 10:43	
OP System Version: 14C0-302					
MCM					
MWP_GUN	14C0-302	MWPT-CA		14C0-302	
MWGT-AA	14C0-302				
Output DLIS Files					
DEFAULT	PERFO_035LUP	FN:34	PRODUCER	01-Aug-2007 10:43	

Schlumberger

GUN # 1
3889m to 3893m MDKB.

MAXIS Field Log



T (hr)

TIME TEMP_MWPT_S SGPA_SL

3540.0	203.77	2625.278
3510.0	203.81	2616.099
3480.0	204.07	2602.625
3450.0	206.07	2500.138
3420.0	203.16	2076.631
3390.0	203.17	2076.547
3360.0	203.16	2076.503

Company: Esso Australia Pty Ltd. Well: B-17

Output DLIS Files

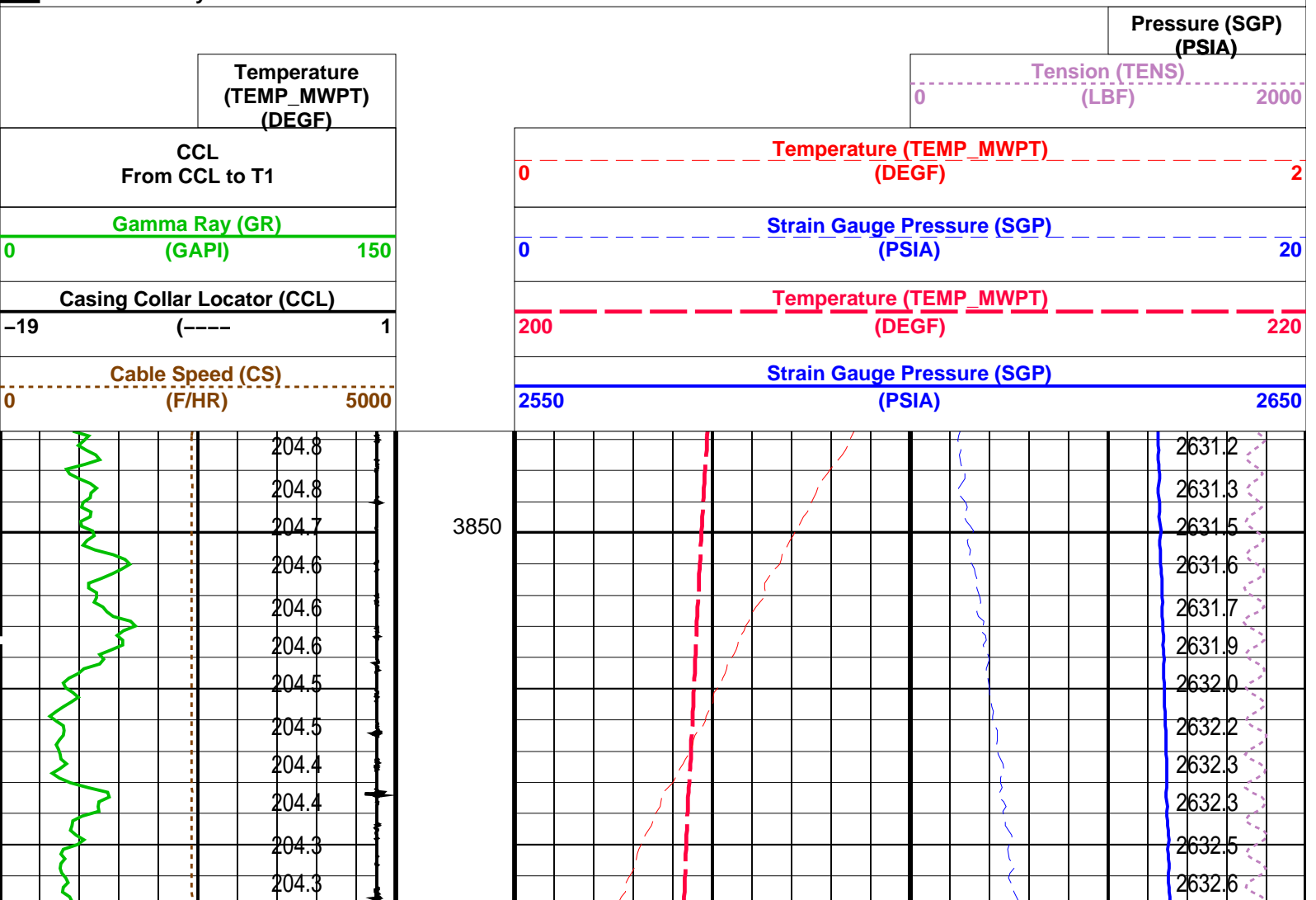
DEFAULT PERFO_026LUP FN:25 PRODUCER 31-Jul-2007 13:24 3897.0 M 3846.7 M

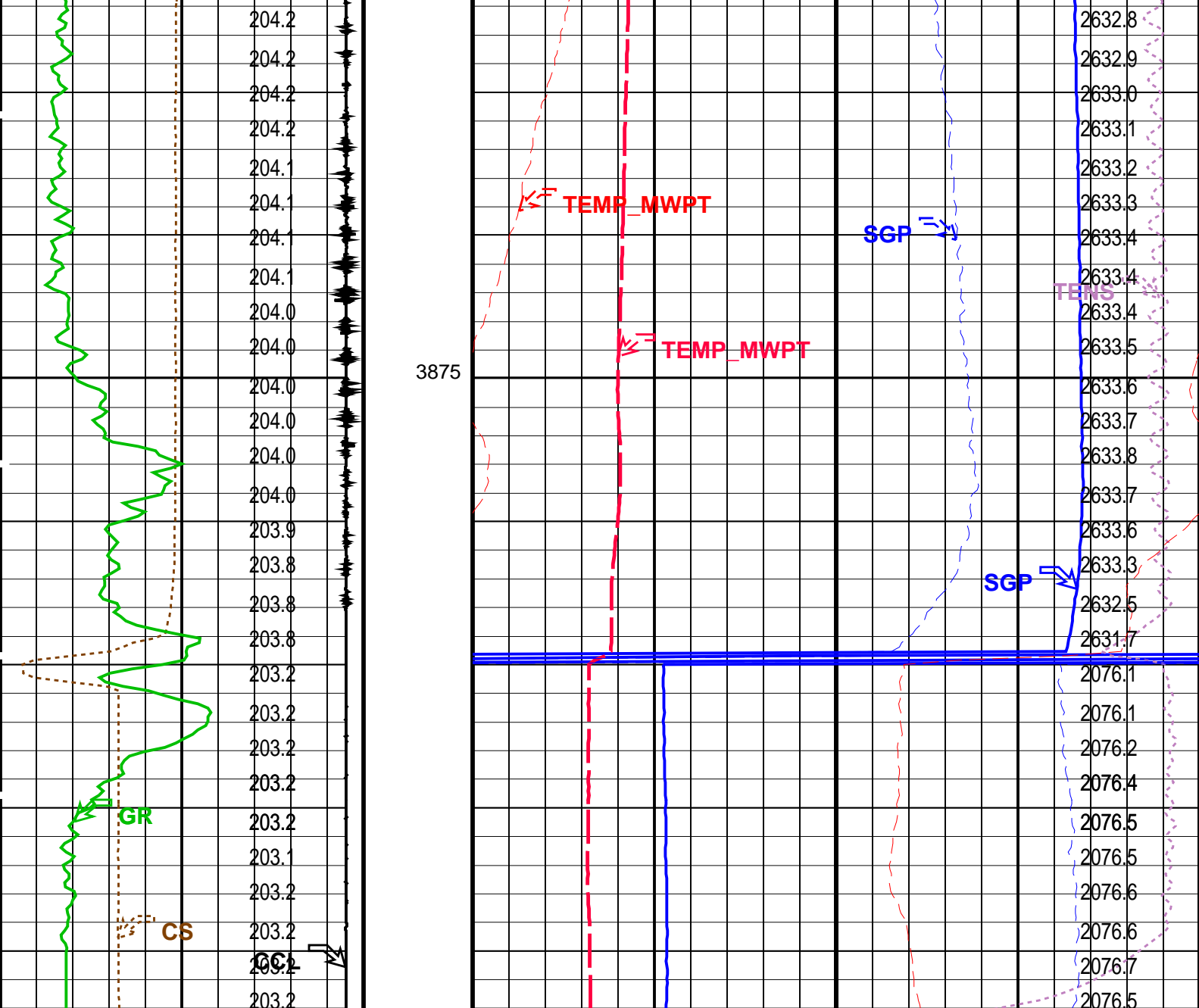
OP System Version: 14C0-302
MCM

MWP_GUN	14C0-302	MWPT-CA	14C0-302
MWGT-AA	14C0-302		

PIP SUMMARY

Time Mark Every 60 S





Cable Speed (CS) (F/HR)		0	5000
Casing Collar Locator (CCL) (----		-19	1
Gamma Ray (GR) (GAPI)		0	150
CCL From CCL to T1			
Temperature (TEMP_MWPT) (DEGF)			
		Strain Gauge Pressure (SGP) (PSIA)	
		2550	2650
		Temperature (TEMP_MWPT) (DEGF)	
		200	220
		Strain Gauge Pressure (SGP) (PSIA)	
		0	20
		Temperature (TEMP_MWPT) (DEGF)	
		0	2
		Tension (TENS) (LBF)	
		0	2000
		Pressure (SGP) (PSIA)	

PIP SUMMARY

Time Mark Every 60 S

Parameters		
DLIS Name	Description	Value
MWPT-CA: MEASUREMENT WHILE PERFORATING TOOL		
DEVI FL CORR	Deviation Angle for Flow Line Correction	0 DEG

FLD
MWPT NULL SOURCE
MWPT NULL TEMP

Flow Line Density
MWPT NULL Temperature Source
MWPT NULL Temperature

1 G/C3
TEMS
0.0 DEGC

Format: MWP Vertical Scale: 1:200 Graphics File Created: 31-Jul-2007 13:24

OP System Version: 14C0-302
MCM

MWP_GUN 14C0-302 MWPT-CA 14C0-302
MWGT-AA 14C0-302

Output DLIS Files

DEFAULT PERFO_026LUP FN:25 PRODUCER 31-Jul-2007 13:24

Schlumberger

Plug Tagged @ 3904m MDKB

MAXIS Field Log

Output DLIS Files

DEFAULT PERFO_019LUP FN:18 PRODUCER 31-Jul-2007 10:44 3895.5 M 3853.6 M

OP System Version: 14C0-302
MCM

SHM_GUN 14C0-302 CCL-L 14C0-302

PIP SUMMARY

Time Mark Every 60 S

Casing Collars

Casing Collar Locator (CCL)
-19 (----) 1

Cable Speed (CS)
0 (F/HR) 20000

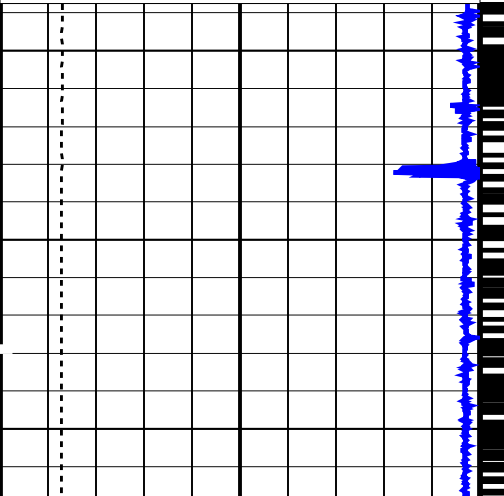
Shifted Casing Collar Locator (SCCL)
-10 (----) 10

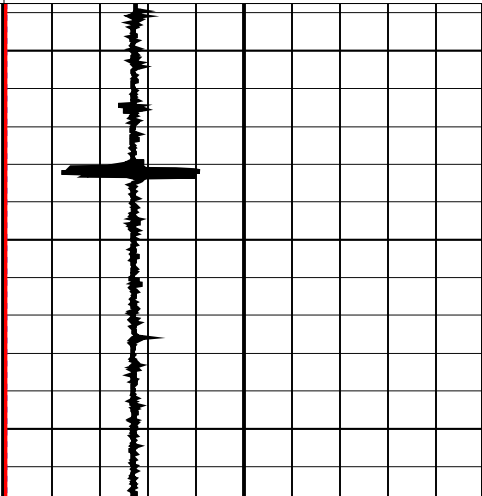
Raw Casing Collar Locator (RCCL)
-3 (----) 17

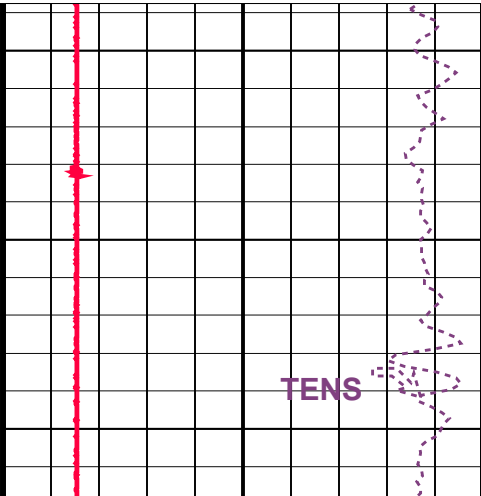
Tension (TENS)
0 (LBF) 1000

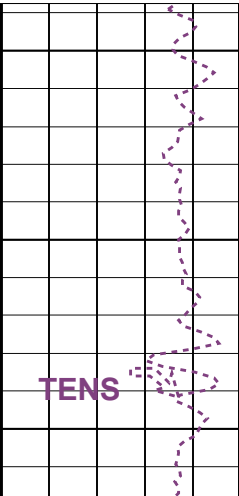
DCMAIN Voltage (DCV)
0 (V) 200

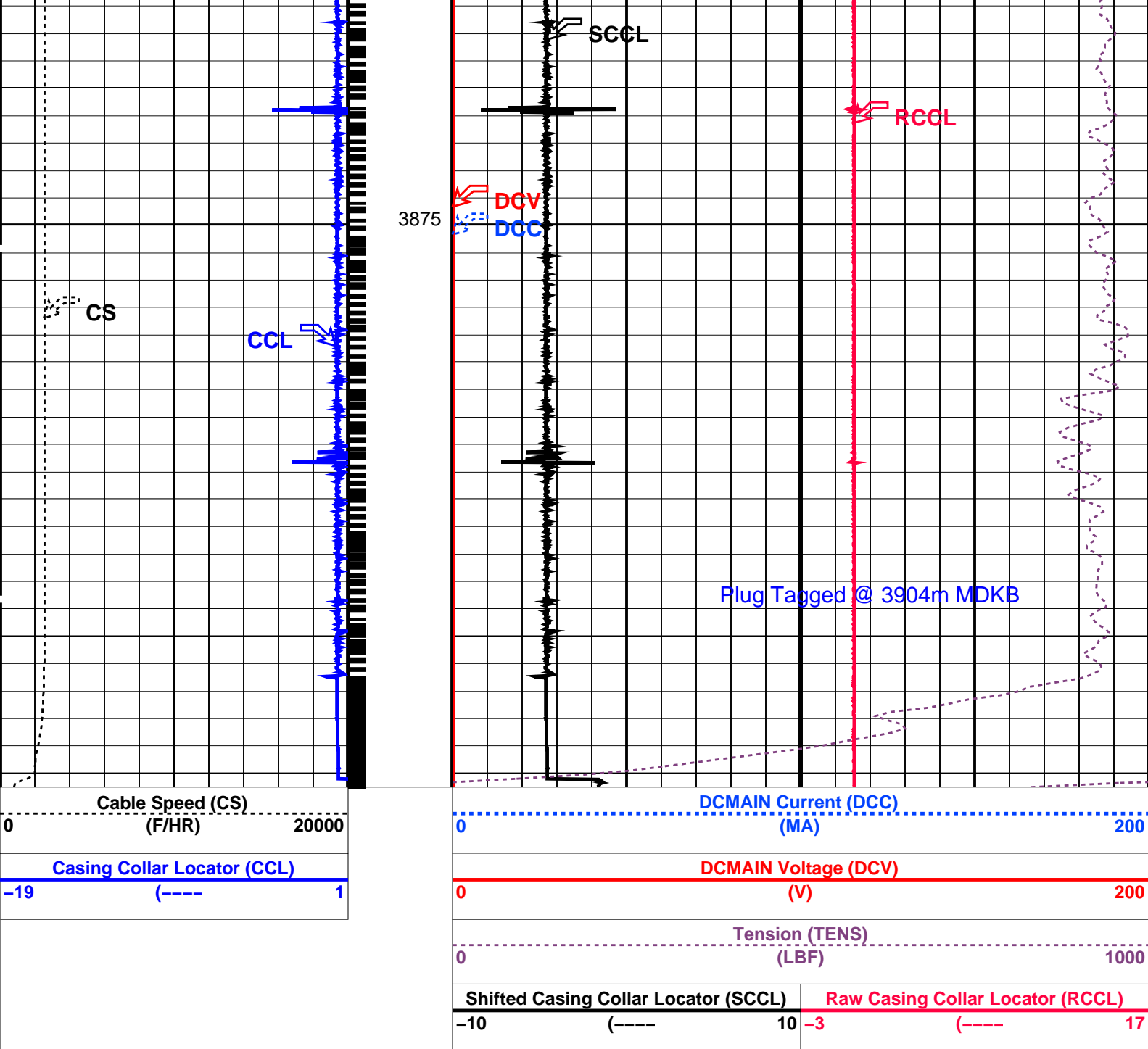
DCMAIN Current (DCC)
0 (MA) 200











PIP SUMMARY

Time Mark Every 60 S

Casing Collars

Parameters		
DLIS Name	Description	Value
CCL-L	Casing Collar Locator	
CCLD	CCL reset delay	12 IN
CCLT	CCL Detection Level	0.3 V

Format: PERFO Vertical Scale: 1:200 Graphics File Created: 31-Jul-2007 10:44

OP System Version: 14C0-302			
MCM			
SHM_GUN	14C0-302	CCL-L	14C0-302

Output DLIS Files			
DEFAULT	PERFO_019LUP	FN:18 PRODUCER	31-Jul-2007 10:44



Plug Setting Pass

MAXIS Field Log

Output DLIS Files

DEFAULT PERFO_018LUP FN:17 PRODUCER 31-Jul-2007 10:26 3930.4 M 3872.0 M

OP System Version: 14C0-302
MCM

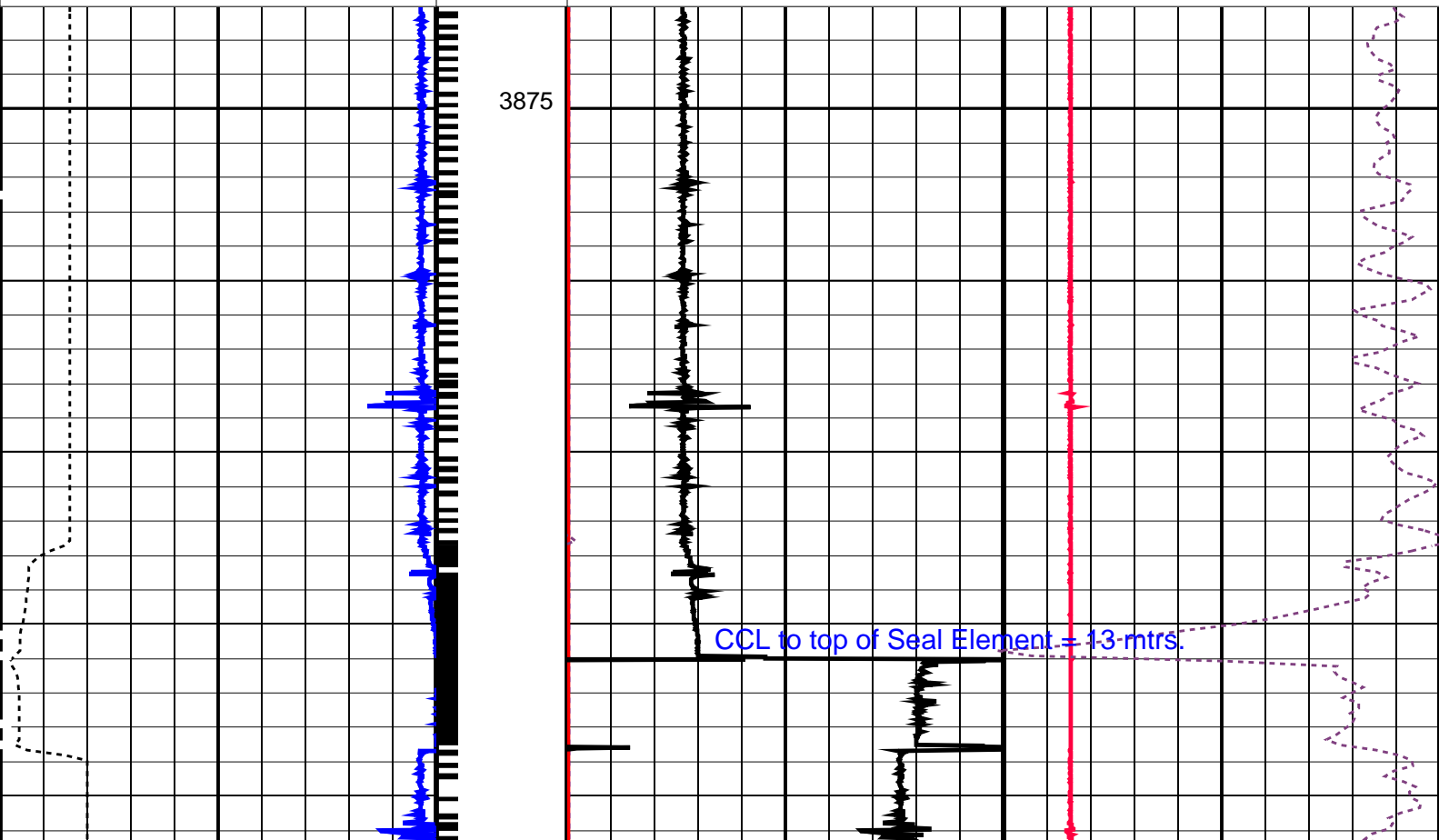
SHM_GUN 14C0-302 CCL-L 14C0-302

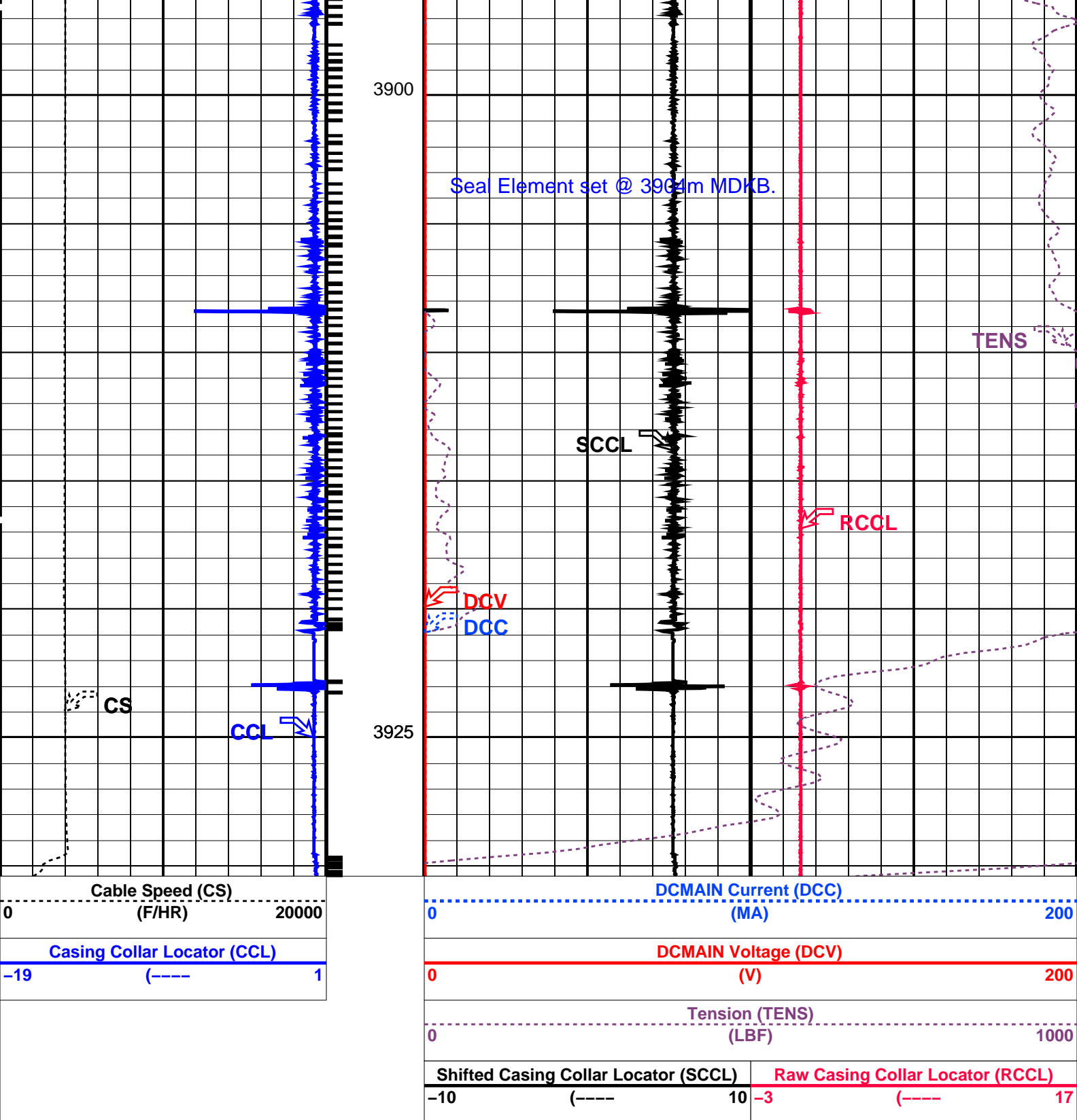
PIP SUMMARY

└─ Casing Collars

Time Mark Every 60 S

--	--	--	--	--	--	--	--	--	--	--	--	--	--	--	--	--	--	--	--	--	--	--	--	--	--	--	--	--	--	--	--	--	--	--	--	--	--	--	--	--	--	--	--	--	--	--	--	--	--	--	--	--	--	--	--	--	--	--	--	--	--	--	--	--	--	--	--	--	--	--	--	--	--	--	--	--	--	--	--	--	--	--	--	--	--	--	--	--	--	--	--	--	--	--	--	--	--	--	--	--	--	--	--	--	--	--	--	--	--	--	--	--	--	--	--	--	--	--	--	--	--	--	--	--	--	--	--	--	--	--	--	--	--	--	--	--	--	--	--	--	--	--	--	--	--	--	--	--	--	--	--	--	--	--	--	--	--	--	--	--	--	--	--	--	--	--	--	--	--	--	--	--	--	--	--	--	--	--	--	--	--	--	--	--	--	--	--	--	--	--	--	--	--	--	--	--	--	--	--	--	--	--	--	--	--	--	--	--	--	--	--	--	--	--	--	--	--	--	--	--	--	--	--	--	--	--	--	--	--	--	--	--	--	--	--	--	--	--	--	--	--	--	--	--	--	--	--	--	--	--	--	--	--	--	--	--	--	--	--	--	--	--	--	--	--	--	--	--	--	--	--	--	--	--	--	--	--	--	--	--	--	--	--	--	--	--	--	--	--	--	--	--	--	--	--	--	--	--	--	--	--	--	--	--	--	--	--	--	--	--	--	--	--	--	--	--	--	--	--	--	--	--	--	--	--	--	--	--	--	--	--	--	--	--	--	--	--	--	--	--	--	--	--	--	--	--	--	--	--	--	--	--	--	--	--	--	--	--	--	--	--	--	--	--	--	--	--	--	--	--	--	--	--	--	--	--	--	--	--	--	--	--	--	--	--	--	--	--	--	--	--	--	--	--	--	--	--	--	--	--	--	--	--	--	--	--	--	--	--	--	--	--	--	--	--	--	--	--	--	--	--	--	--	--	--	--	--	--	--	--	--	--	--	--	--	--	--	--	--	--	--	--	--	--	--	--	--	--	--	--	--	--	--	--	--	--	--	--	--	--	--	--	--	--	--	--	--	--	--	--	--	--	--	--	--	--	--	--	--	--	--	--	--	--	--	--	--	--	--	--	--	--	--	--	--	--	--	--	--	--	--	--	--	--	--	--	--	--	--	--	--	--	--	--	--	--	--	--	--	--	--	--	--	--	--	--	--	--	--	--	--	--	--	--	--	--	--	--	--	--	--	--	--	--	--	--	--	--	--	--	--	--	--	--	--	--	--	--	--	--	--	--	--	--	--	--	--	--	--	--	--	--	--	--	--	--	--	--	--	--	--	--	--	--	--	--	--	--	--	--	--	--	--	--	--	--	--	--	--	--	--	--	--	--	--	--	--	--	--	--	--	--	--	--	--	--	--	--	--	--	--	--	--	--	--	--	--	--	--	--	--	--	--	--	--	--	--	--	--	--	--	--	--	--	--	--	--	--	--	--	--	--	--	--	--	--	--	--	--	--	--	--	--	--	--	--	--	--	--	--	--	--	--	--	--	--	--	--	--	--	--	--	--	--	--	--	--	--	--	--	--	--	--	--	--	--	--	--	--	--	--	--	--	--	--	--	--	--	--	--	--	--	--	--	--	--	--	--	--	--	--	--	--	--	--	--	--	--	--	--	--	--	--	--	--	--	--	--	--	--	--	--	--	--	--	--	--	--	--	--	--	--	--	--	--	--	--	--	--	--	--	--	--	--	--	--	--	--	--	--	--	--	--	--	--	--	--	--	--	--	--	--	--	--	--	--	--	--	--	--	--	--	--	--	--	--	--	--	--	--	--	--	--	--	--	--	--	--	--	--	--	--	--	--	--	--	--	--	--	--	--	--	--	--	--	--	--	--	--	--	--	--	--	--	--	--	--	--	--	--	--	--	--	--	--	--	--	--	--	--	--	--	--	--	--	--	--	--	--	--	--	--	--	--	--	--	--	--	--	--	--	--	--	--	--	--	--	--	--	--	--	--	--	--	--	--	--	--	--	--	--	--	--	--	--	--	--	--	--	--	--	--	--	--	--	--	--	--	--	--	--	--	--	--	--	--	--	--	--	--	--	--	--	--	--	--	--	--	--	--	--	--	--	--	--	--	--	--	--	--	--	--	--	--	--	--	--	--	--	--	--	--	--	--	--	--	--	--	--	--	--	--	--	--	--	--	--	--	--	--	--	--	--	--	--	--	--	--	--	--	--	--	--	--	--	--	--	--	--	--	--	--	--	--	--	--	--	--	--	--	--	--	--	--	--	--	--	--	--	--	--	--	--	--	--	--	--	--	--	--	--	--	--	--	--	--	--	--	--	--	--	--	--	--	--	--	--	--	--	--	--	--	--	--	--	--	--	--	--	--	--	--	--	--	--	--	--	--	--	--	--	--	--	--	--	--	--	--	--	--	--	--	--	--	--	--	--	--	--	--	--	--	--	--	--	--	--	--	--	--	--	--	--	--	--	--	--	--	--	--	--	--	--	--	--	--	--	--	--	--	--	--	--	--	--	--	--	--	--	--	--	--	--	--	--	--	--	--	--	--	--	--	--	--	--	--	--	--	--	--	--	--	--	--	--	--	--	--	--	--	--	--	--	--	--	--	--	--	--	--	--	--	--	--	--	--	--	--	--	--	--	--	--	--	--	--	--	--	--	--	--	--	--	--	--	--	--	--	--	--	--	--	--	--	--	--	--	--	--	--	--	--	--	--	--	--	--	--	--	--	--	--	--	--	--	--	--	--	--	--	--	--	--	--	--	--	--	--	--	--	--	--	--	--	--	--	--	--	--	--	--	--	--	--	--	--	--	--	--	--	--	--	--	--	--	--	--	--	--	--	--	--	--	--	--	--	--	--	--	--	--	--	--	--	--	--	--	--	--	--	--	--	--	--	--	--	--	--	--	--	--	--	--	--	--	--	--	--	--	--	--	--	--	--	--	--	--	--	--	--	--	--	--	--	--	--	--	--	--	--	--	--	--	--	--	--	--	--	--	--	--	--	--	--	--	--	--	--	--	--	--	--	--	--	--	--	--	--	--	--	--	--	--	--	--	--	--	--	--	--	--	--	--	--	--	--	--	--	--	--	--	--	--	--	--	--	--	--	--	--	--	--	--	--	--	--	--	--	--	--	--	--	--	--	--	--	--	--	--	--	--	--	--	--	--	--	--	--	--	--	--	--	--	--	--	--	--	--	--	--	--	--	--	--	--	--	--	--	--	--	--	--	--	--	--	--	--	--	--	--	--	--	--	--	--





PIP SUMMARY

└ Casing Collars

Time Mark Every 60 S

Parameters			
DLIS Name	Description	Value	
CCLD	CCL-L: Casing Collar Locator	12	IN
CCLT	CCL reset delay	0.3	V
	CCL Detection Level		

Format: PERFO Vertical Scale: 1:200 Graphics File Created: 31-Jul-2007 10:26

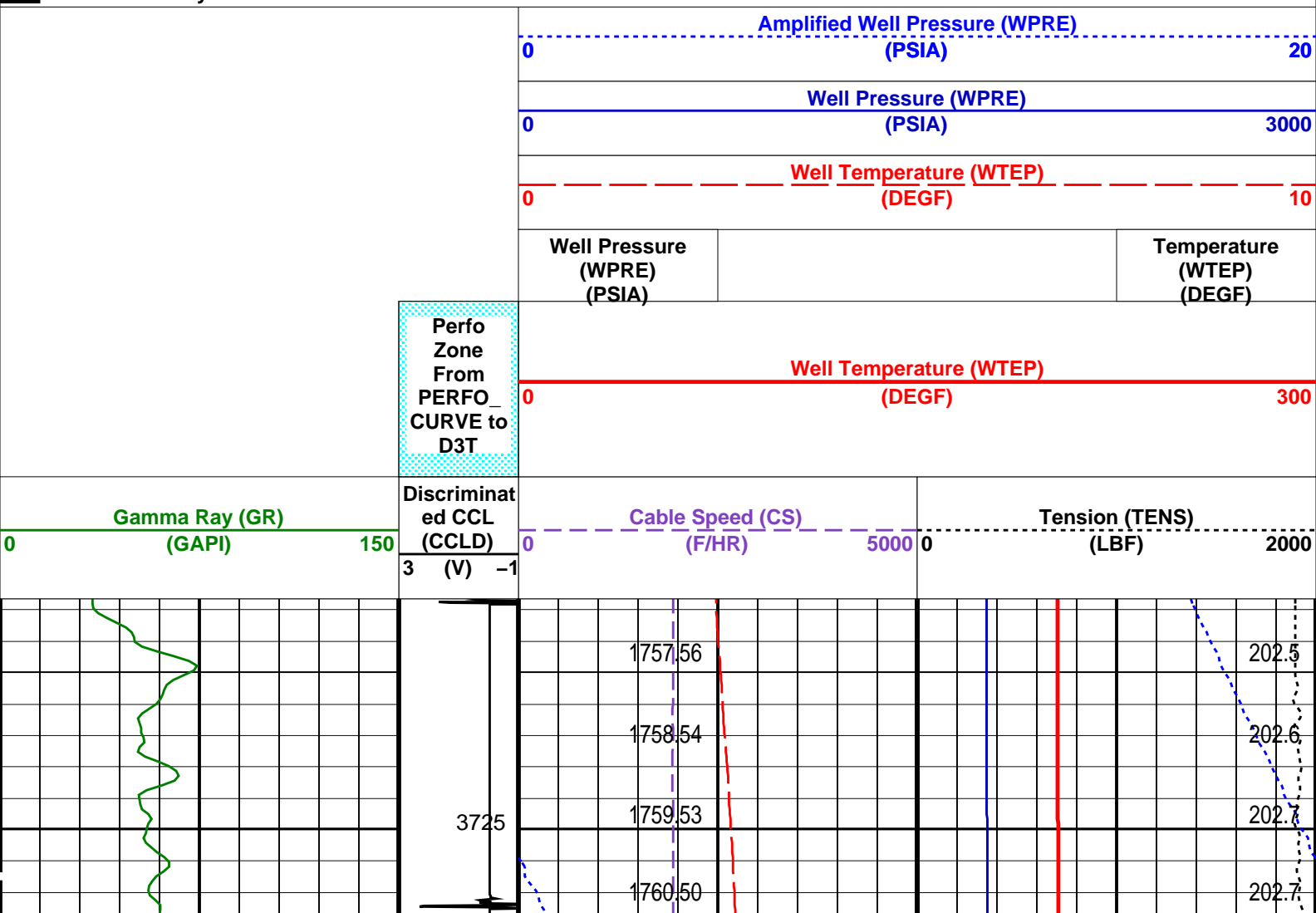


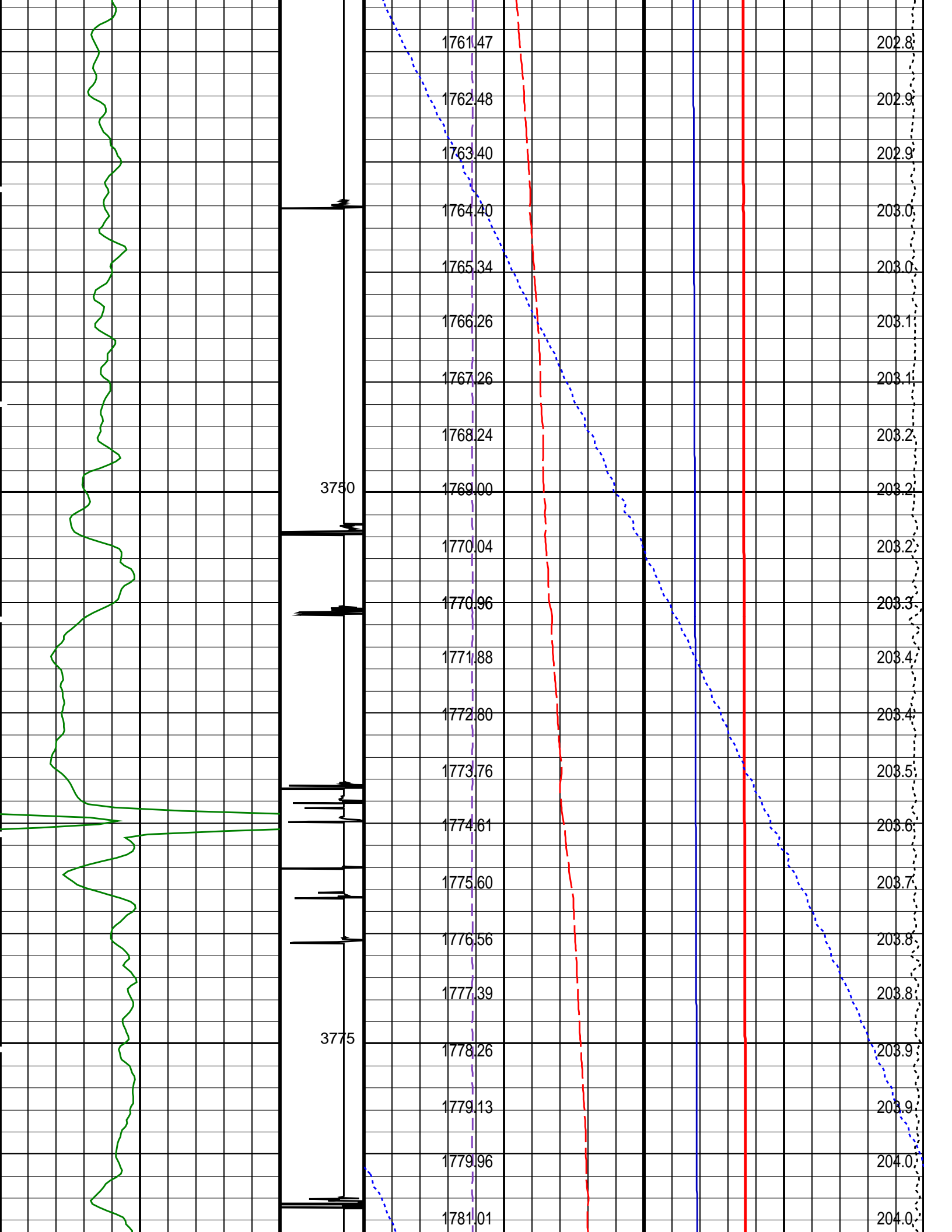
MAXIS Field Log

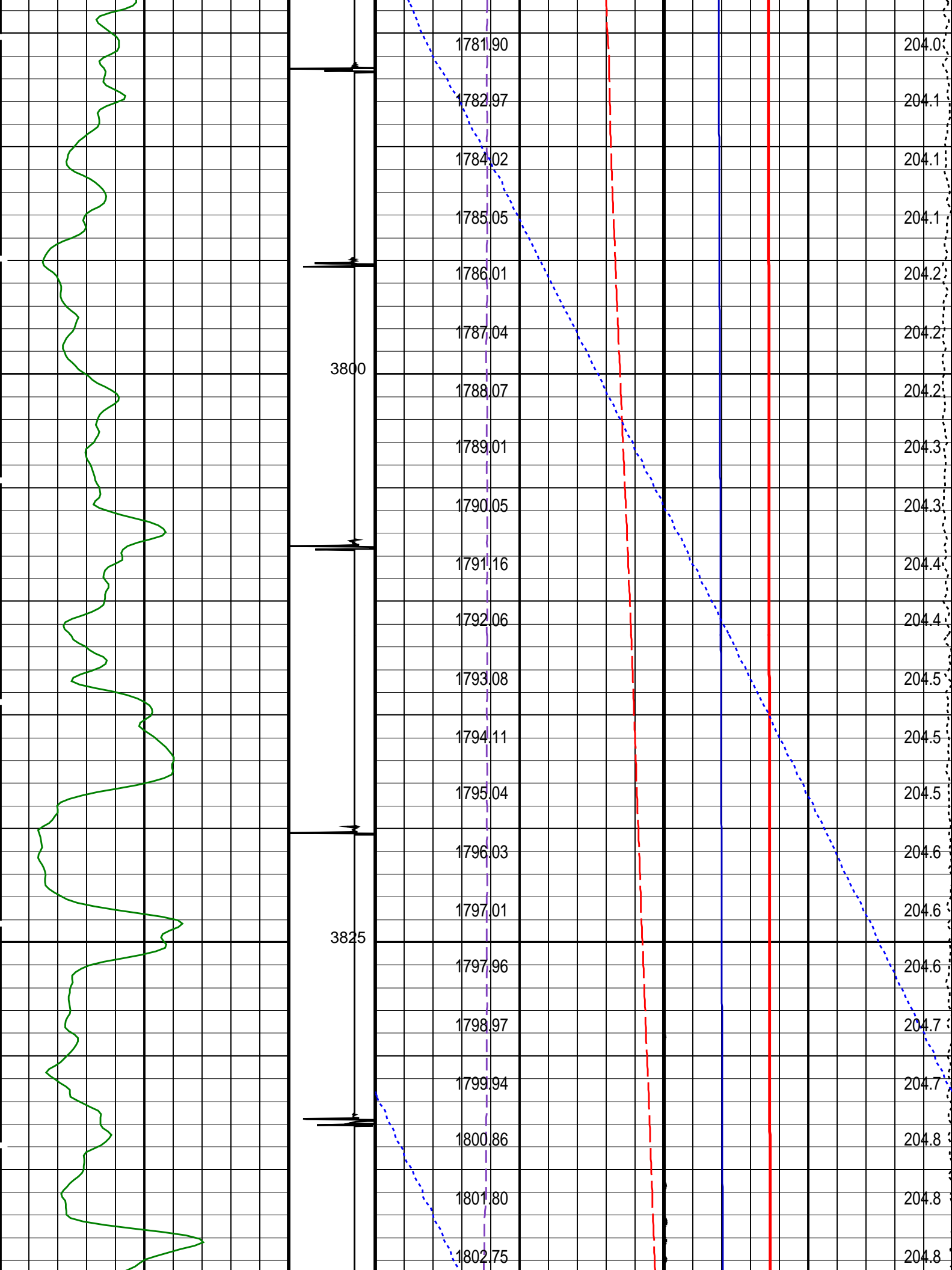
OP System Version: 14C0-302
MCM

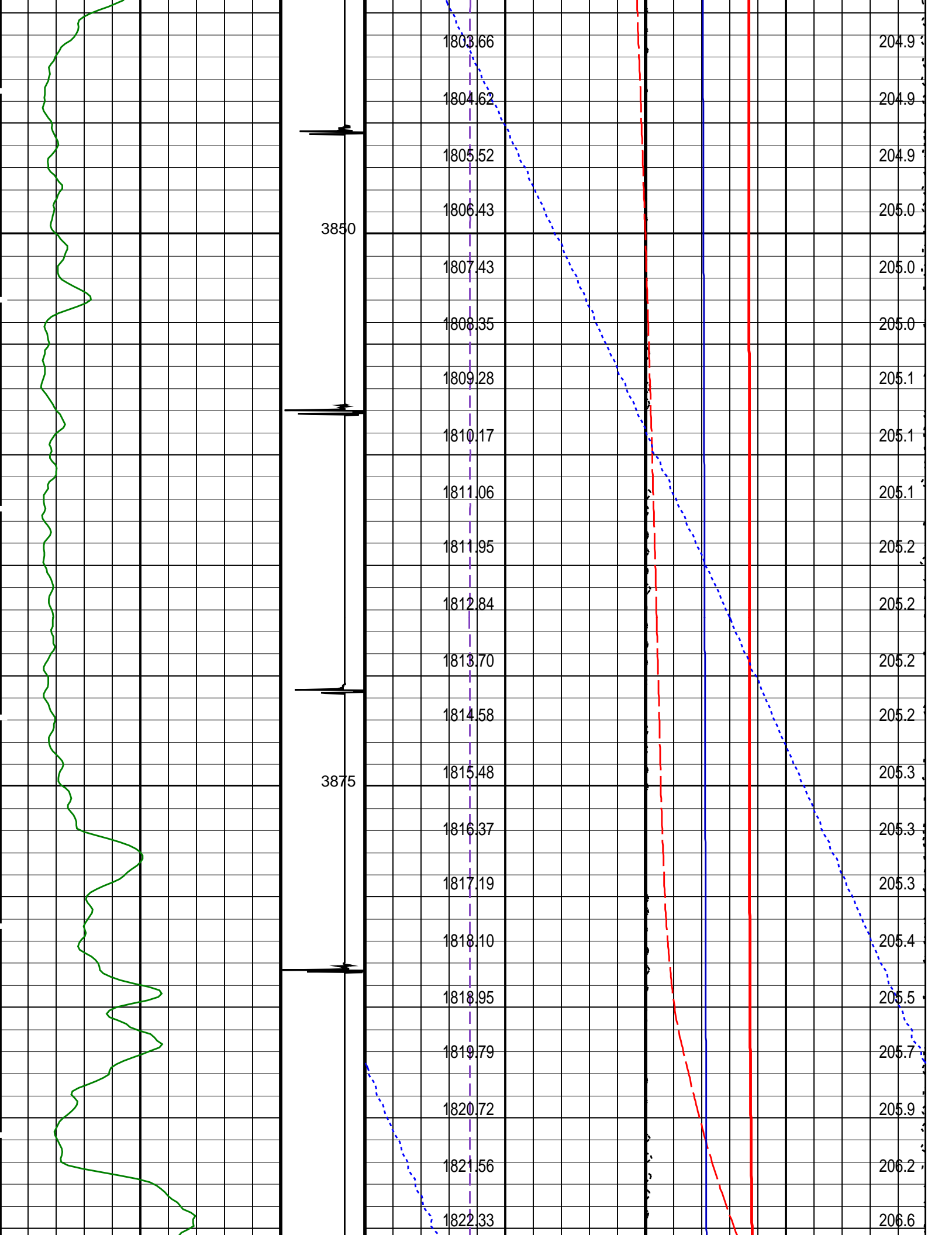
PIP SUMMARY

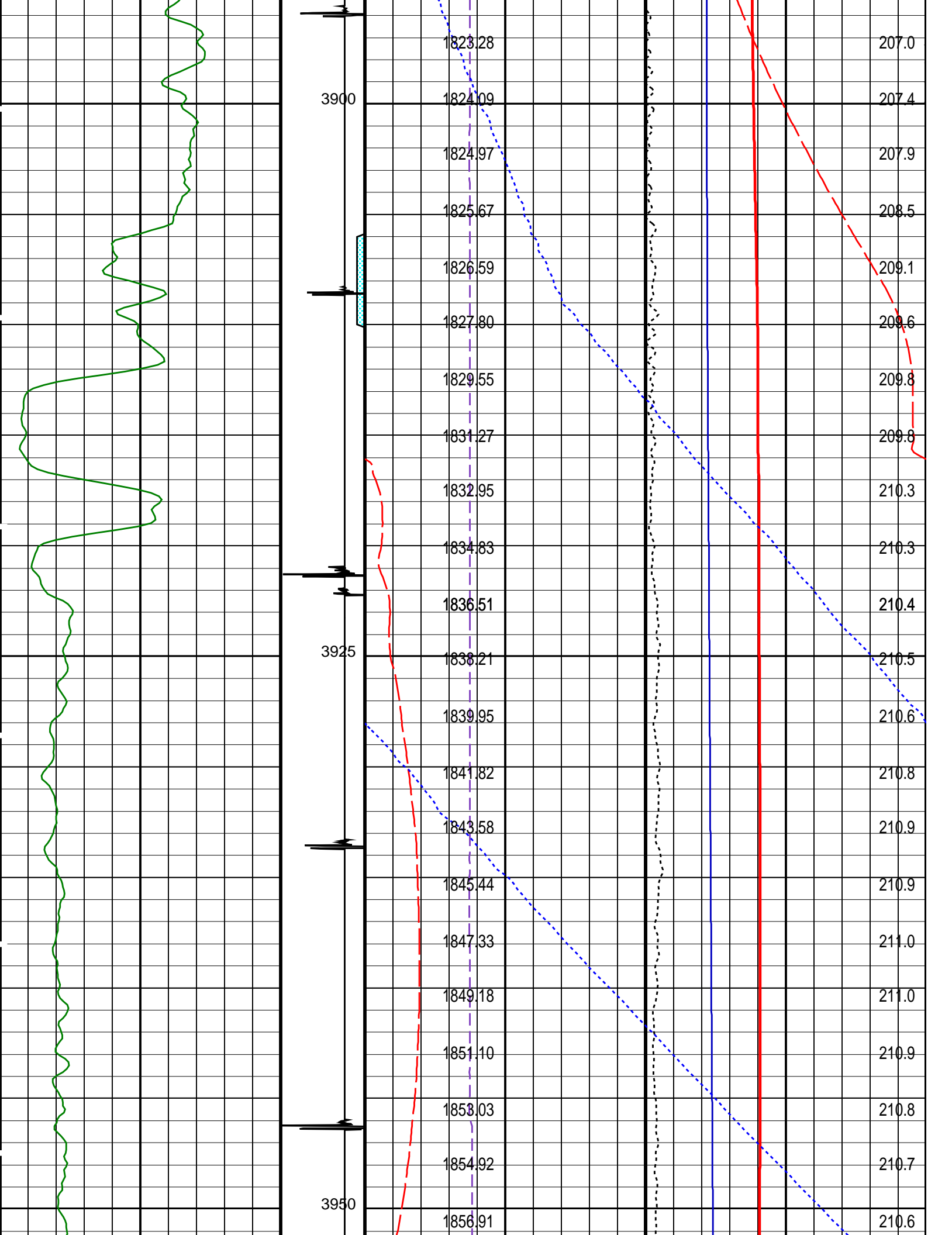
Time Mark Every 60 S

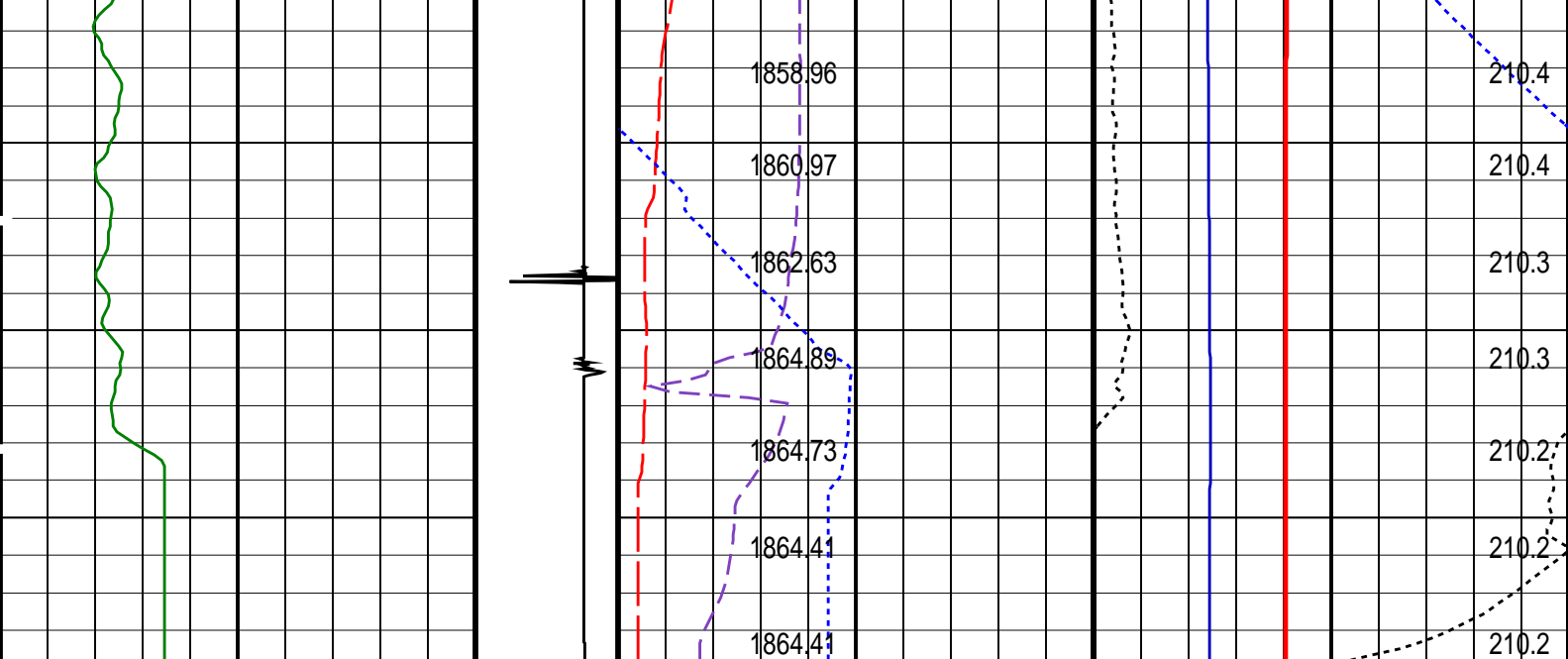












Gamma Ray (GR) (GAPI)	Discriminat ed CCL (CCLD) (V)	Cable Speed (CS) (F/HR)	Tension (TENS) (LBF)
0 150	3 -1	0 5000	0 2000

Perfo Zone From PERFO_ CURVE to D3T	Well Temperature (WTEP) (DEGF)	
	0	300
	Well Pressure (WPRE) (PSIA)	Temperature (WTEP) (DEGF)
	Well Temperature (WTEP) (DEGF)	
	0	10
	Well Pressure (WPRE) (PSIA)	
	0	3000
	Amplified Well Pressure (WPRE) (PSIA)	
	0	20

PIP SUMMARY

Time Mark Every 60 S

Format: PSP_1 Vertical Scale: 1:200 Graphics File Created: 29-Jul-2007 12:10

OP System Version: 14C0-302 MCM	
PSPT-B	14C0-302

Output DLIS Files			
DEFAULT	PSP_007LUP	FN:6	PRODUCER 29-Jul-2007 12:10

Company:	Esso Australia Pty Ltd.	Schlumberger
Well:	B-17	
Field:	Bream B	
Rig:	Crane / Prod4	
Country:	Australia	

2 1/8" 45deg Phased Powerjet
Perforation Record
7" HPI PSP Plug Setting Record