

Company: Esso Australia Pty Ltd.

Well: FLA A6

Field: Flounder

Rig: Prod 3 / Flounder Country: Australia

2-1/8" Phased Powerjet
Perforating Record
3-Sep-2007

Rig: Prod 3 / Flounder
Field: Flounder
Location: Bass Strait
Well: FLA A6
Company: Esso Australia Pty Ltd.

Rig:		Prod 3 / Flounder	
Field:		Flounder	
Location:		Bass Strait	
Well:		FLA A6	
Company:		Esso Australia Pt	
Logging Date	LOCATION		
	State: Victoria	Permanent Datum:	Elev.: 34.2 m
		Log Measured From:	G.L. -94 m
		Drilling Measured From:	D.F. 34.2 m
	Max. Well Deviation 64 deg	-34.2 m above Perm. Datum	
Run Number	3-Sep-2007	Longitude 148° 06' 15.1"E	Latitude 38° 18' 45.24"S
Depth Driller	1		
Schlumberger Depth	4220 m		
Bottom Log Interval	4117 m		
Top Log Interval	4085 m		
Casing Fluid Type	4083.5 m		
Salinity	Produced Fluids		
Density	1.05 g/cm3		
Fluid Level			
BIT/CASING/TUBING STRING			
Bit Size	9.875 in		
From	4065 m		
To	4220 m		
Casing/Tubing Size	7.625 in		
Weight	29.7 lbm/ft		
Grade	N-80		
From	3786 m		
To	4146 m		
Maximum Recorded Temperatures			
Logger On Bottom	3-Sep-2007	Time	11:00
Unit Number	93	Location	AUSL
Recorded By	C.Rowand, B.Donahoe		
Witnessed By	Mr M. Wilson		

PVT DATA		Run 1	Run 2	Run 3
Oil Density				
Water Salinity				
Gas Gravity				
Bo				
Bw				
1/Bg				
Bubble Point Pressure				
Bubble Point Temperature				
Solution GOR				
Maximum Deviation	64 deg			
CEMENTING DATA				
Primary/Squeeze	Primary			
Casing String No				
Lead Cement Type				
Volume				
Density				
Water Loss				
Additives				
Tail Cement Type				
Volume				
Density				
Water Loss				
Additives				
Expected Cement Top				
Logging Date				
Run Number				
Depth Driller				
Schlumberger Depth				
Bottom Log Interval				
Top Log Interval				
Casing Fluid Type				
Salinity				
Density				
Fluid Level				
BIT/CASING/TUBING STRING				
Bit Size				
From				
To				
Casing/Tubing Size				
Weight				
Grade				
From				
To				
Maximum Recorded Temperatures				
Logger On Bottom				
Unit Number				
Recorded By				
Witnessed By				

DEPTH SUMMARY LISTING

Date Created: 8-SEP-2007 19:53:50

Depth System Equipment

Depth Measuring Device		Tension Device		Logging Cable	
Type:	IDW-H	Type:	CMTD-B/A	Type:	2-32ZT
Serial Number:	797	Serial Number:	1721	Serial Number:	24016
Calibration Date:	11-May-2007	Calibration Date:	15-Aug-2007	Length:	5230.06 M
Calibrator Serial Number:	1	Calibrator Serial Number:	1173	Conveyance Method:	Wireline
Calibration Cable Type:	2-32ZT	Calibration Gain:	0.89	Rig Type:	Offshore_Fixed
Wheel Correction 1:	-3	Calibration Offset:	-731.00		
Wheel Correction 2:	-1				

Depth Control Parameters

Log Sequence:	Subsequent Log In the Well
Reference Log Name:	Solar Composite Correlation Log
Reference Log Run Number:	
Reference Log Date:	

Depth Control Remarks

1. Log correlated to Solar Composite Correlation Log (No date) provided by Esso.
2. Log referenced to RST Sigma & IC log of 1-Sep-2007
- 3.
- 4.
- 5.
6. Tool zeroed in the Toolcatcher at -7 M.

DISCLAIMER

THE USE OF AND RELIANCE UPON THIS RECORDED-DATA BY THE HEREIN NAMED COMPANY (AND ANY OF ITS AFFILIATES, PARTNERS, REPRESENTATIVES, AGENTS, CONSULTANTS AND EMPLOYEES) IS SUBJECT TO THE TERMS AND CONDITIONS AGREED UPON BETWEEN SCHLUMBERGER AND THE COMPANY, INCLUDING: (a) RESTRICTIONS ON USE OF THE RECORDED-DATA; (b) DISCLAIMERS AND WAIVERS OF WARRANTIES AND REPRESENTATIONS REGARDING COMPANY'S USE OF AND RELIANCE UPON THE RECORDED-DATA; AND (c) CUSTOMER'S FULL AND SOLE RESPONSIBILITY FOR ANY INFERENCE DRAWN OR DECISION MADE IN CONNECTION WITH THE USE OF THIS RECORDED-DATA.

OTHER SERVICES1	OTHER SERVICES2
OS1: RST–Sigma	OS1:
OS2: RST–IC	OS2:
OS3: MPBT	OS3:
OS4: Cement Bailers	OS4:
OS5:	OS5:

REMARKS: RUN NUMBER 1

Correlated to Esso Solar Composite Log provided by client.

Perforation Interval 4083.5 to 4085m

When gun was pulled out of hole it was found that the bottom four charges had not fired.

The well was open to production whilst the guns were fired.

Schlumberger crew:					
Gary Martin,Craig Harris,Peter Lawrence					
RUN 1			RUN 2		
SERVICE ORDER #:			SERVICE ORDER #:		
PROGRAM VERSION:			PROGRAM VERSION:		
FLUID LEVEL:			FLUID LEVEL:		
LOGGED INTERVAL	START	STOP	LOGGED INTERVAL	START	STOP
EQUIPMENT DESCRIPTION					
RUN 1			RUN 2		
SURFACE EQUIPMENT					
MWPM-AA 37					
DOWNHOLE EQUIPMENT					

5.49

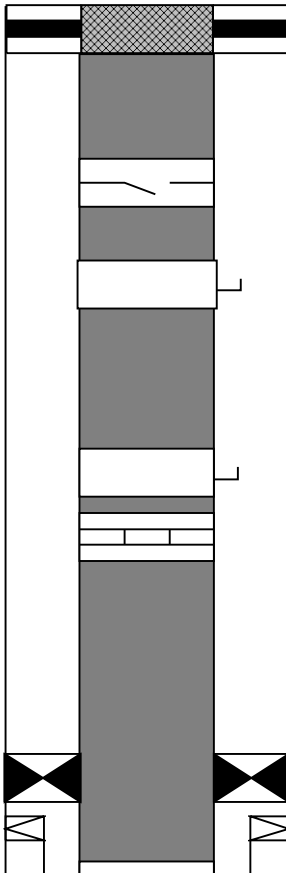
4.95

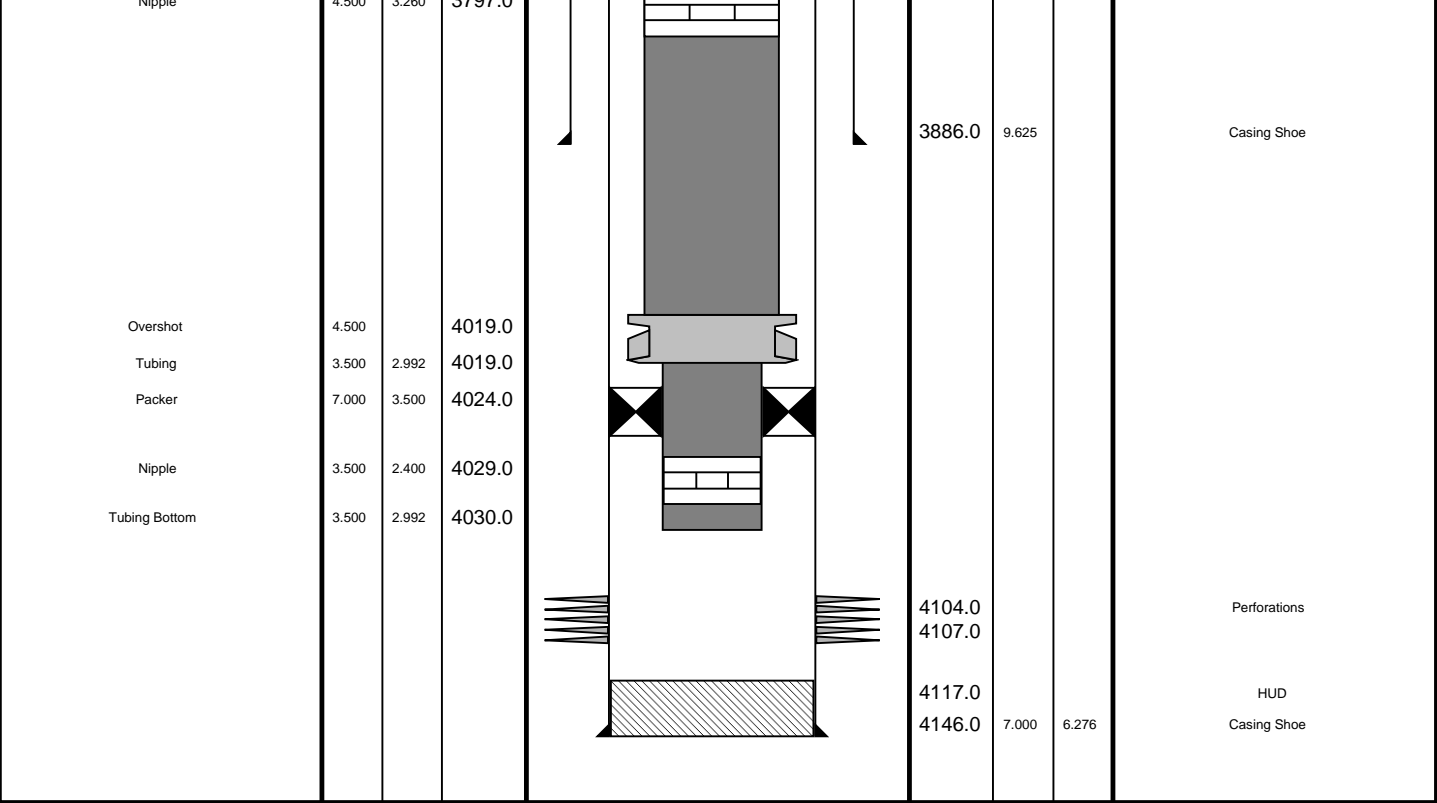
4.47

4.04

TOOL BOTTOM

MAXIMUM STRING DIAMETER 2.13 IN
MEASUREMENTS RELATIVE TO TOOL ZERO
ALL LENGTHS IN METERS

Production String	(in)		(m)	Well Schematic	(m)		(in)		Casing String
	OD	ID	MD		MD	OD	ID		
Tubing Hanger	9.625	4.500	12.8			9.625		Casing String	
Tubing	4.500	3.958							
SSSV	4.500	3.813	457.0						
Side Pocket Mandrel	4.500	3.863	969.0						
Side Pocket Mandrel	4.500	3.863	1874.0						
Nipple	4.500	3.813	1890.0						
Packer	9.625	4.500	3777.0						
Nipple	4.500	3.958	3797.0		3786.0	7.000	6.276	Casing String	
						9.625	7.000	Liner Hanger	



Shooting Pass Log Out Position

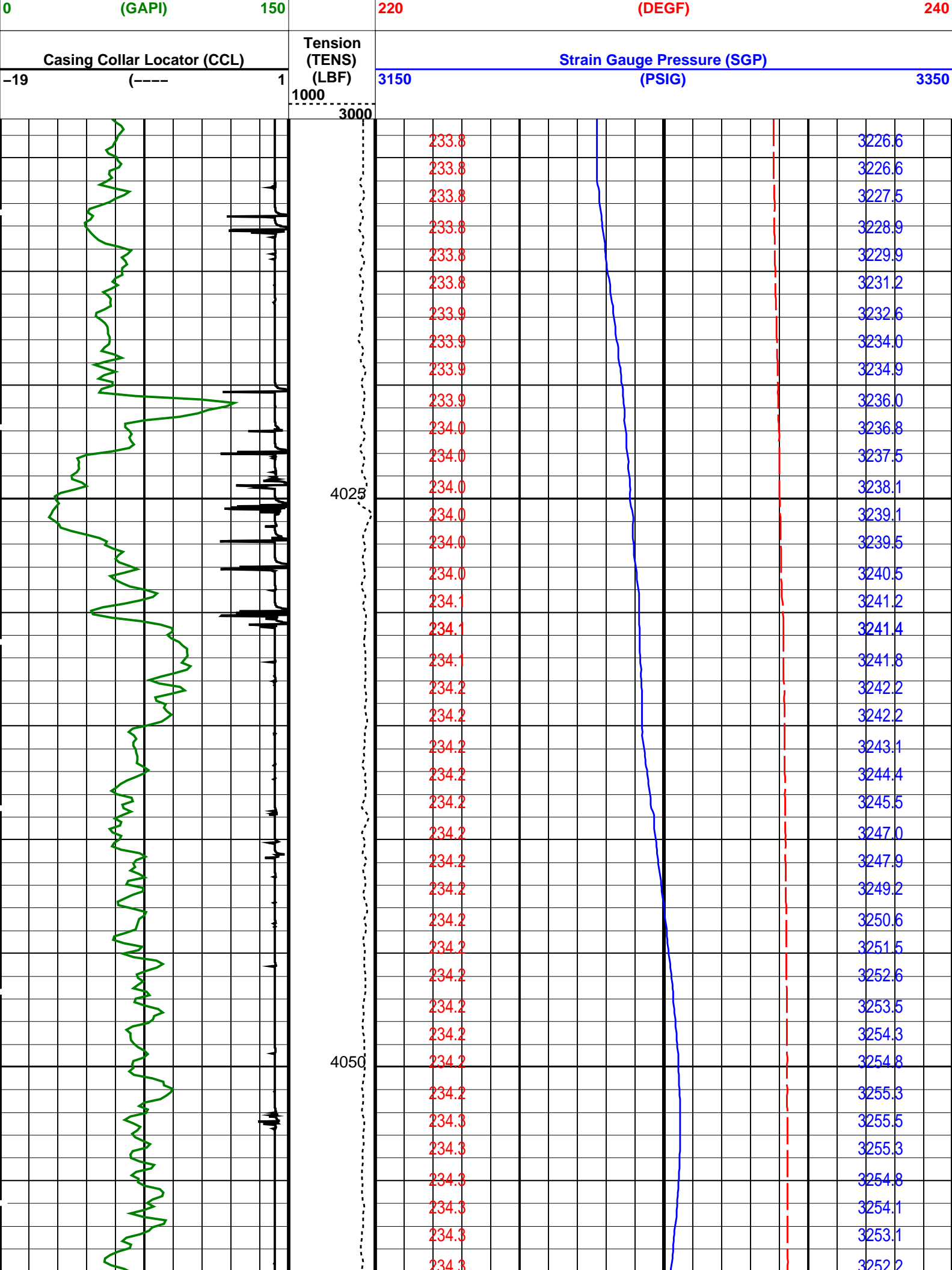
MAXIS Field Log

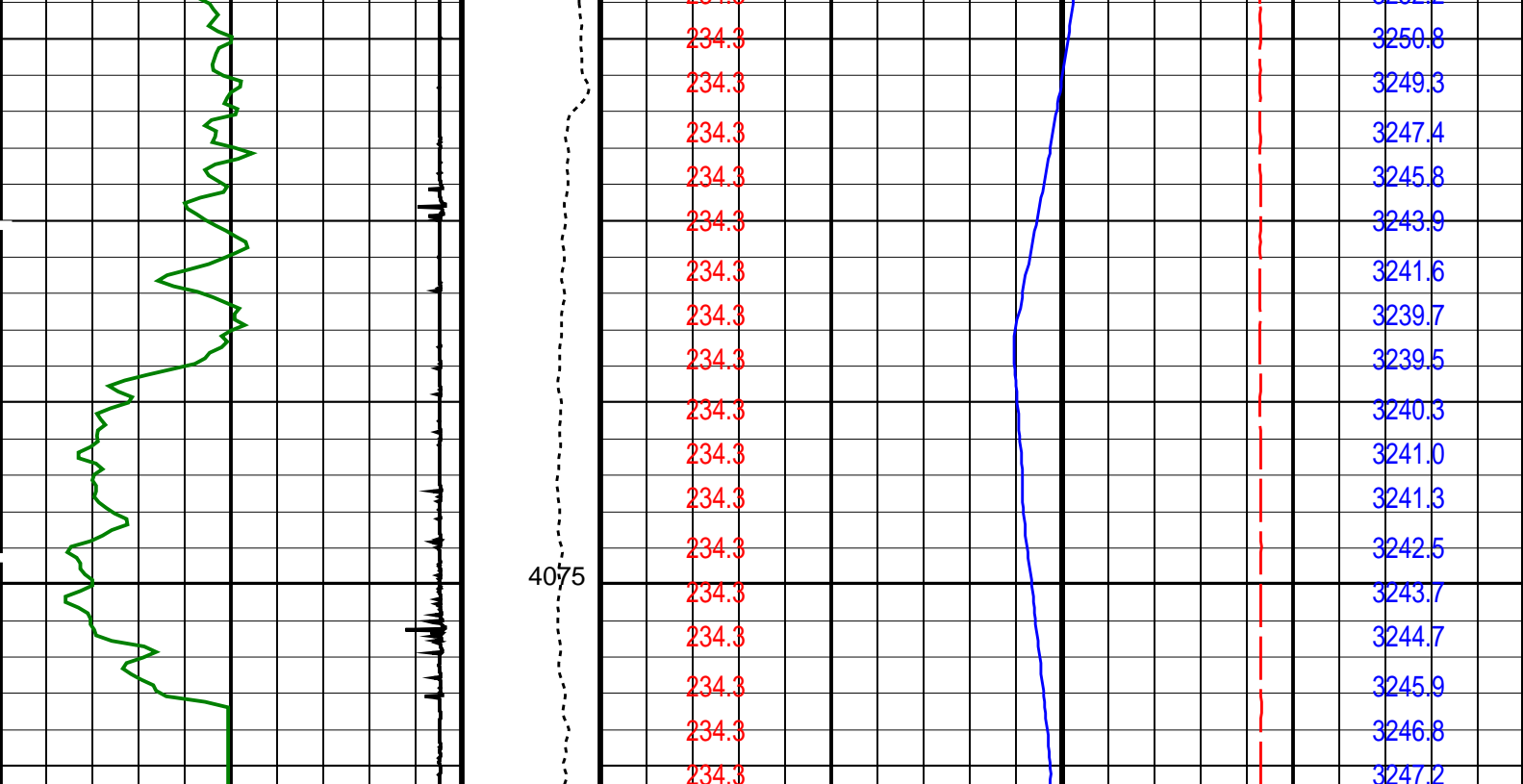
Company: Esso Australia Pty Ltd. Well: FLA A25a

Output DLIS Files						
DEFAULT	PERFO_050LUP	FN:76	PRODUCER	03-Sep-2007 11:00	4080.5 M	4008.3 M
OP System Version: 15C0-309						
MCM						
MWP_GUN	SRPC-3357-Q2_2007	MWPT-DA		SRPC-3357-Q2_2007		
MWGT-AA	SRPC-3357-Q2_2007					

PIP SUMMARY

Time Mark Every 60 S		Temperature (TEMP_MWPT) (DEGE)	Pressure (SGP) (PSIG)
Gamma Ray (GR)		Temperature (TEMP_MWPT)	





Casing Collar Locator (CCL)		Strain Gauge Pressure (SGP)	
-19	1	3150	3350
Gamma Ray (GR) (GAPI)		Temperature (TEMP_MWPT) (DEGF)	
0	150	220	240
		Temperature (TEMP_MWPT) (DEGF)	Pressure (SGP) (PSIG)

PIP SUMMARY

Time Mark Every 60 S

Parameters

DLIS Name	Description	Value
MWPT-DA: MEASUREMENT WHILE PERFORATING TOOL		
DEVI_FL_CORR	Deviation Angle for Flow Line Correction	0 DEG
FLD	Flow Line Density	1 G/C3
MWPT_NULL_SOURCE	MWPT NULL Temperature Source	TEMS
MWPT_NULL_TEMP	MWPT NULL Temperature	0.0 DEGC

Format: MWP Vertical Scale: 1:200 Graphics File Created: 03-Sep-2007 11:00

OP System Version: 15C0-309

MCM

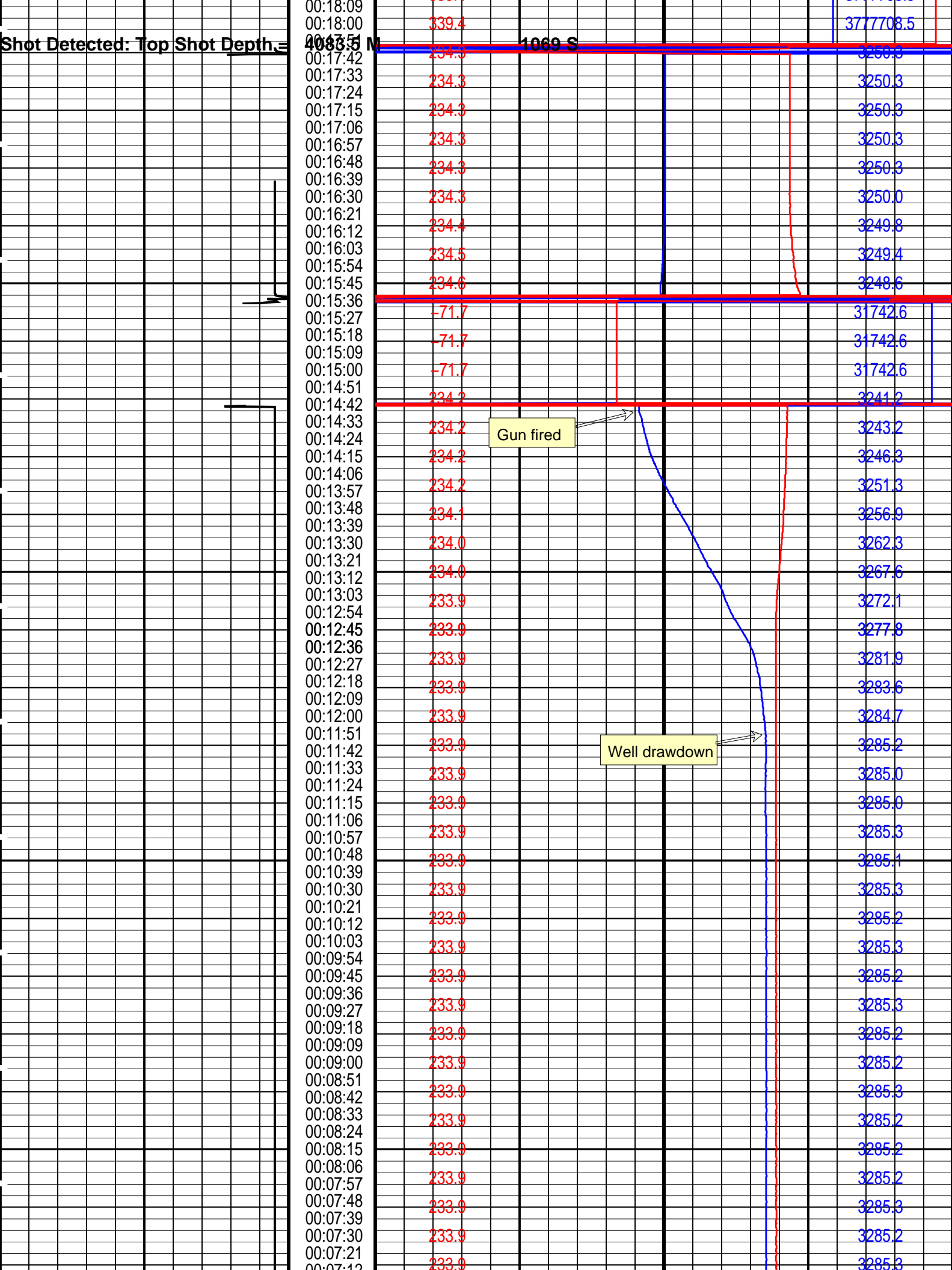
MWP_GUN	SRPC-3357-Q2_2007	MWPT-DA	SRPC-3357-Q2_2007
MWGT-AA	SRPC-3357-Q2_2007		

Output DLIS Files

DEFAULT	PERFO_050LUP	FN:76	PRODUCER	03-Sep-2007 11:00
---------	--------------	-------	----------	-------------------

Schlumberger

Shooting Pass Station Log



MWP_GUN SRPC-3357-Q2_2007
MWGT-AA SRPC-3357-Q2_2007

MWPT-DA

SRPC-3357-Q2_2007

Output DLIS Files

DEFAULT

PERFO_049LTP

FN:75

PRODUCER

03-Sep-2007 10:59

Schlumberger

Shooting Pass Log In Position

MAXIS Field Log

Company: Esso Australia Pty Ltd.

Well: FLA A25a

Output DLIS Files

DEFAULT

PERFO_048LUP

FN:74

PRODUCER

03-Sep-2007 10:52

4100.2 M

4078.2 M

OP System Version: 15C0-309

MCM

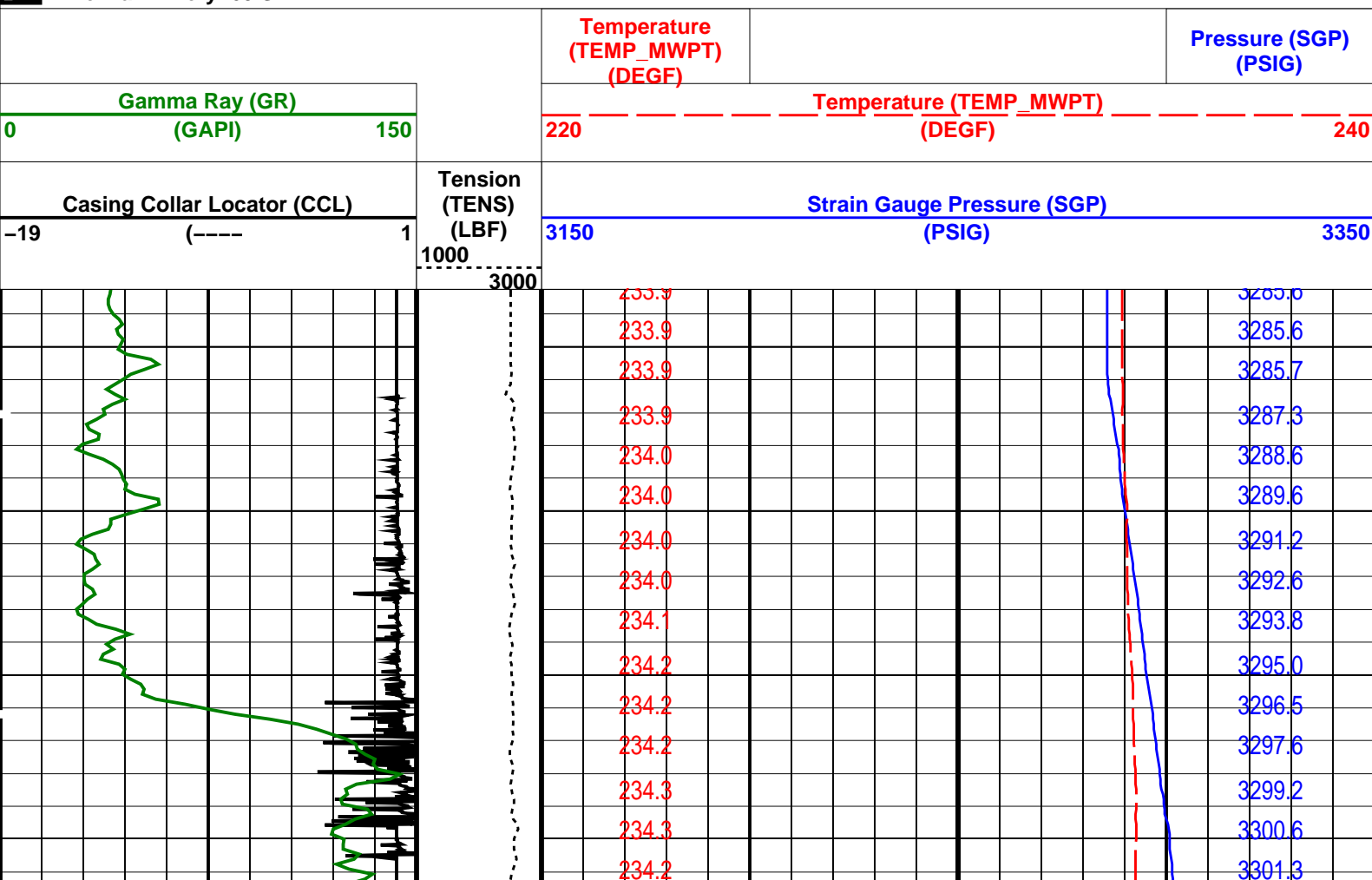
MWP_GUN SRPC-3357-Q2_2007
MWGT-AA SRPC-3357-Q2_2007

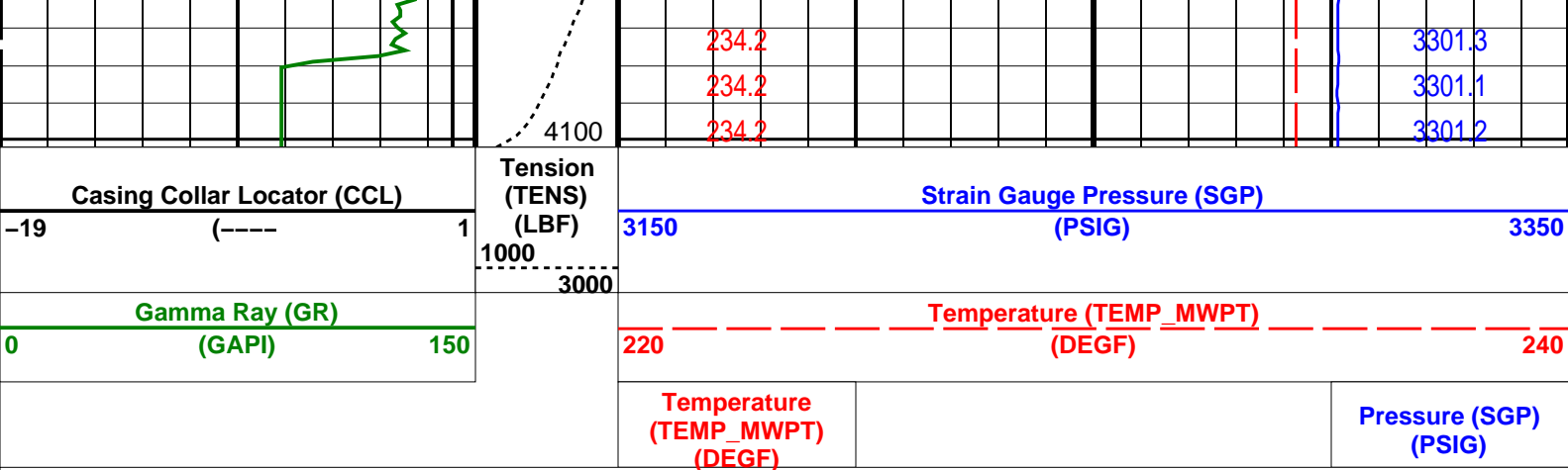
MWPT-DA

SRPC-3357-Q2_2007

PIP SUMMARY

Time Mark Every 60 S





Time Mark Every 60 S

Parameters			
DLIS Name	Description	Value	
MWPT-DA: MEASUREMENT WHILE PERFORATING TOOL			
DEVI_FL_CORR	Deviation Angle for Flow Line Correction	0	DEG
FLD	Flow Line Density	1	G/C3
MWPT_NULL_SOURCE	MWPT NULL Temperature Source	TEMS	
MWPT_NULL_TEMP	MWPT NULL Temperature	0.0	DEGC
Format: MWP	Vertical Scale: 1:200	Graphics File Created: 03-Sep-2007 10:52	

OP System Version: 15C0-309			
MCM			
MWP_GUN	SRPC-3357-Q2_2007	MWPT-DA	SRPC-3357-Q2_2007
MWGT-AA	SRPC-3357-Q2_2007		

Output DLIS Files			
DEFAULT	PERFO_048LUP	FN:74	PRODUCER 03-Sep-2007 10:52

Gun Correlation

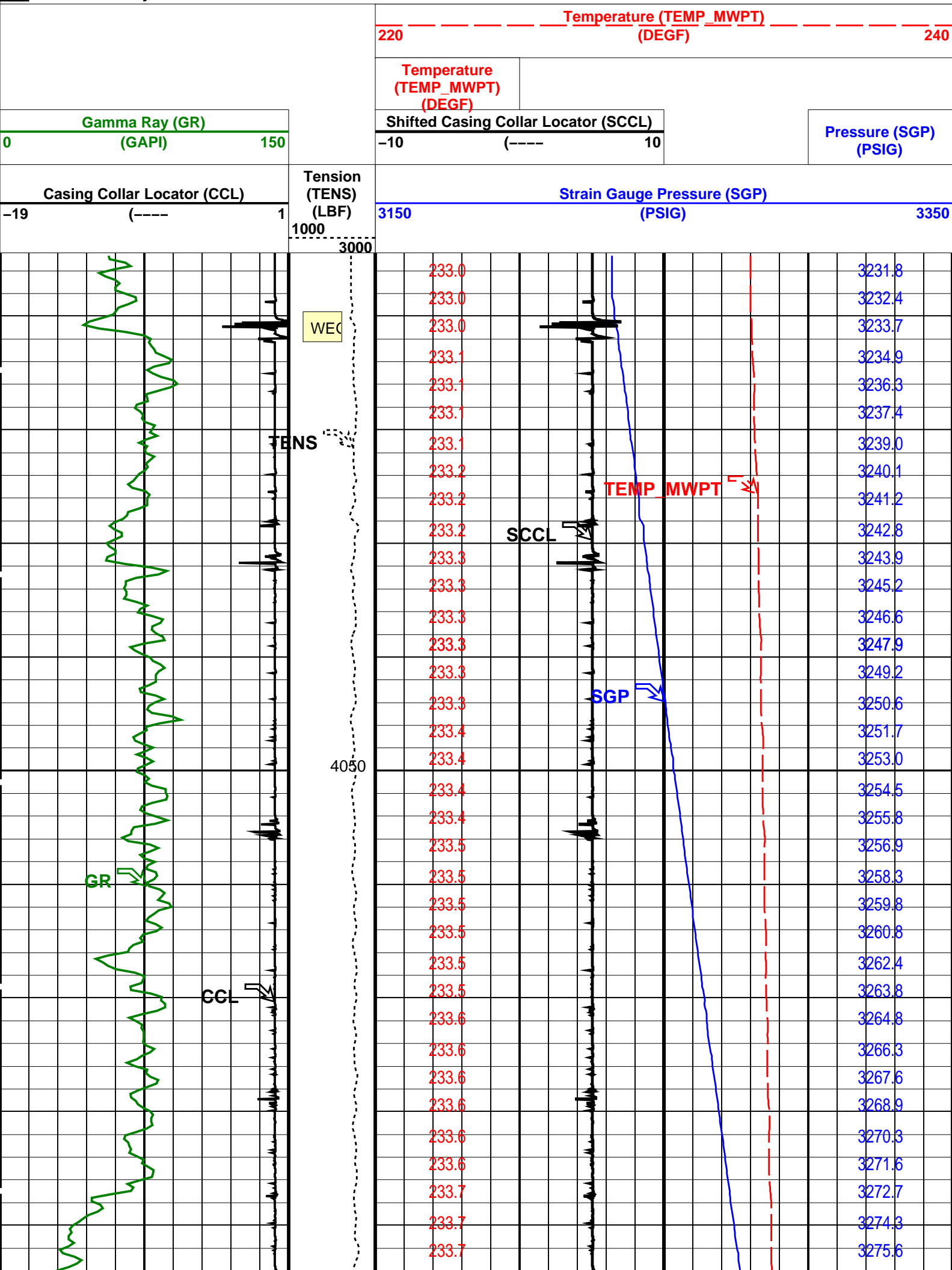
MAXIS Field Log

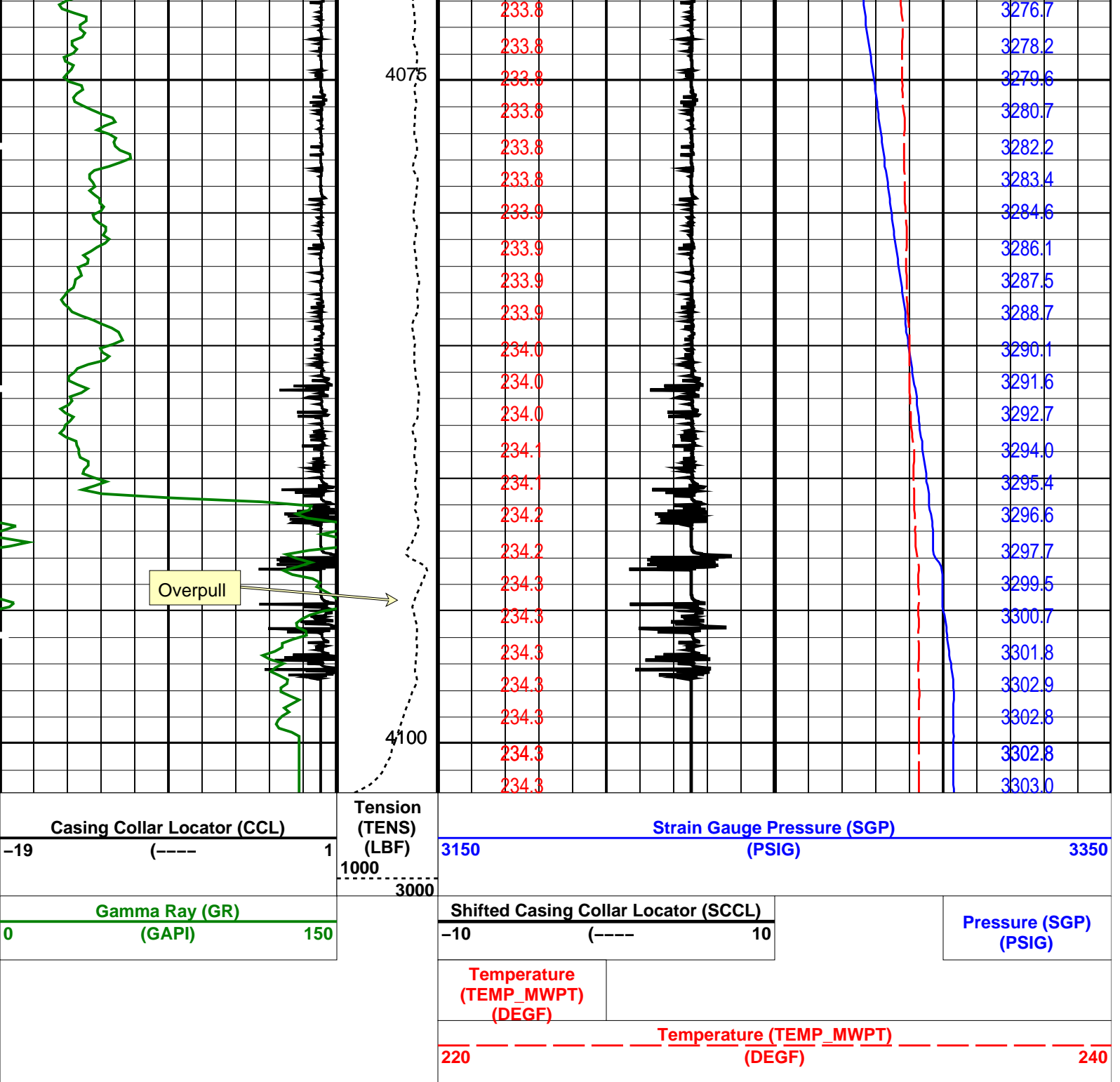
Company: Esso Australia Pty Ltd. Well: FLA A6

Input DLIS Files					
DEFAULT	PERFO_046LUP	FN:72	PRODUCER	03-Sep-2007 10:24	4101.8 M 4026.7 M
Output DLIS Files					
DEFAULT	PERFO_046PUP	FN:27	PRODUCER	05-Sep-2007 17:52	4101.8 M 4027.2 M

OP System Version: 15C0-309			
MCM			
MWPT-DA	SRPC-3357-Q2_2007	MWGT-AA	SRPC-3357-Q2_2007

Time Mark Every 60 S





PIP SUMMARY

Time Mark Every 60 S

Parameters		
DLIS Name	Description	Value
MWPT-DA: MEASUREMENT WHILE PERFORATING TOOL		
DEVI_FL_CORR	Deviation Angle for Flow Line Correction	0 DEG
FLD	Flow Line Density	1 G/C3
MWPT_NULL_SOURCE	MWPT NULL Temperature Source	TEMS
MWPT_NULL_TEMP	MWPT NULL Temperature	0.0 DEGC
System and Miscellaneous		
DO	Depth Offset for Playback	0.0 M
PP	Playback Processing	NORMAL

Format: MWP Vertical Scale: 1:200 Graphics File Created: 05-Sep-2007 17:52

MWPT-DA	SRPC-3357-Q2_2007	MWGT-AA	SRPC-3357-Q2_2007
Input DLIS Files			
DEFAULT	PERFO_046LUP	FN:72	PRODUCER 03-Sep-2007 10:24 4101.8 M 4026.7 M
Output DLIS Files			
DEFAULT	PERFO_046PUP	FN:27	PRODUCER 05-Sep-2007 17:52

Schlumberger

Before Survey Calibration

MAXIS Field Log

Calibration and Check Summary

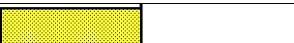
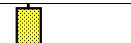

Measurement	Nominal	Master	Before	After	Change	Limit	Units
MEASUREMENT WHILE PERFORATING GAMMA RAY TOOL Wellsite Calibration – Detector Calibration							
Before: 27-Aug-2007 17:50							
Gamma Ray (Signal) Background	30.00	N/A	3.162	N/A	N/A	N/A	GAPI
Gamma Ray (Jig – Background)	151.0	N/A	151.0	N/A	N/A	13.73	GAPI
Gamma Ray (Calibrated)	165.0	N/A	165.0	N/A	N/A	15.00	GAPI

MEASUREMENT WHILE PERFORATING GAMMA RAY TOOL / Equipment Identification

Primary Equipment:	
GAMMA RAY CARTRIDGE	MWPG – AA 19
Auxiliary Equipment:	
GAMMA RAY HOUSING	MWGH – AA 19

MEASUREMENT WHILE PERFORATING GAMMA RAY TOOL Wellsite Calibration

Detector Calibration

Phase	Gamma Ray (Signal) Background	GAPI	Value	Phase	Gamma Ray (Jig – Background)	GAPI	Value	Phase	Gamma Ray (Calibrated)	GAPI	Value
Before			3.162	Before			151.0	Before			165.0
	0 (Minimum)	30.00 (Nominal)	120.0 (Maximum)		137.3 (Minimum)	151.0 (Nominal)	164.7 (Maximum)		150.0 (Minimum)	165.0 (Nominal)	180.0 (Maximum)

Before: 27-Aug-2007 17:50

Company: **Esso Australia Pty Ltd.**

Schlumberger

Well: **FLA A6**
Field: **Flounder**

Field: **Flounder**
Rig: **Prod 3 / Flounder**
Country: **Australia**

2-1/8" Phased Powerjet
Perforating Record
3-Sep-2007