

Company: Esso Australia Pty Ltd.

Well: FLA A25a

Field: Flounder

Rig: Prod 3 / Flounder Country: Australia

RST-C
Sigma Log
25-Aug-2007

Prod 3 / Flounder
Flounder
Bass Strait
FLA A25a
Esso Australia Pty Ltd.

LOCATION			
Bass Strait		Elev.:	K.B. 40.8 m
Gippsland			G.L. -94 m
Basin			D.F. 40.8 m
Permanent Datum:	Mean Sea Level	Elev.:	40.8 m
Log Measured From:	Drill Floor	-40.8 m above Perm. Datum	
Drilling Measured From:	Drill Floor		
State: Victoria	Max. Well Deviation 59.15 deg	Longitude 148° 06' 15.1"E	Latitude 38° 18'45.24"S

Logging Date	25-Aug-2007		
Run Number	1		
Depth Driller	3935 m		
Schlumberger Depth	3561 m		
Bottom Log Interval	3557 m		
Top Log Interval	3510 m		
Casing Fluid Type	Produced Fluids		
Salinity			
Density	1.05 g/cm3		
Fluid Level	1625 m		
BIT/CASING/TUBING STRING			
Bit Size	9.875 in		
From	816 m		
To	3935 m		
Casing/Tubing Size	7.625 in		
Weight	29.7 lbm/ft		
Grade	L-80		
From	19.56 m		
To	3903 m		
Maximum Recorded Temperatures	227 degF		
Logger On Bottom	25-Aug-2007	12:15	
Unit Number	93	AUSL	
Recorded By	C.Rowand, B.Donahoe		
Witnessed By	Mr M. Wilson		

PVT DATA				Run 1	Run 2	Run
Oil Density						
Water Salinity						
Gas Gravity						
Bo						
Bw						
1/Bg						
Bubble Point Pressure						
Bubble Point Temperature						
Solution GOR						
Maximum Deviation	59.15 deg					
CEMENTING DATA						
Primary/Squeeze	Primary					
Casing String No						
Lead Cement Type						
Volume						
Density						
Water Loss						
Additives						
Tail Cement Type						
Volume						
Density						
Water Loss						
Additives						
Expected Cement Top						
Logging Date						
Run Number						
Depth Driller						
Schlumberger Depth						
Bottom Log Interval						
Top Log Interval						
Casing Fluid Type						
Salinity						
Density						
Fluid Level						
BIT/CASING/TUBING STRING						
Bit Size						
From						
To						
Casing/Tubing Size						
Weight						
Grade						
From						
To						
Maximum Recorded Temperatures						
Logger On Bottom						
Unit Number						
Recorded By						
Witnessed By						

DEPTH SUMMARY LISTING

Date Created: 26-AUG-2007 18:26:31

Depth System Equipment

Depth Measuring Device		Tension Device		Logging Cable	
Type:	IDW-H	Type:	CMTD-B/A	Type:	2-32ZT
Serial Number:	797	Serial Number:	1721	Serial Number:	24016
Calibration Date:	11-May-2007	Calibration Date:	15-Aug-2007	Length:	5377.89 M
Calibrator Serial Number:	1	Calibrator Serial Number:	1173	Conveyance Method:	Wireline
Calibration Cable Type:	2-32ZT	Calibration Gain:	0.89	Rig Type:	Offshore_Fixed
Wheel Correction 1:	-3	Calibration Offset:	-731.00		
Wheel Correction 2:	-1				

Depth Control Parameters

Log Sequence:	Subsequent Log In the Well
Reference Log Name:	Solar Composite
Reference Log Run Number:	
Reference Log Date:	30-Jan-2004

Depth Control Remarks

1. Log correlated to Solar Composite Log provided by Esso.
2. Correlated to the Sigma curve, as the GR is affected by NORM.
- 3.
- 4.
- 5.
6. Tool zeroed in the Toolcatcher at 5.5 M.

DISCLAIMER

THE USE OF AND RELIANCE UPON THIS RECORDED-DATA BY THE HEREIN NAMED COMPANY (AND ANY OF ITS AFFILIATES, PARTNERS, REPRESENTATIVES, AGENTS, CONSULTANTS AND EMPLOYEES) IS SUBJECT TO THE TERMS AND CONDITIONS AGREED UPON BETWEEN SCHLUMBERGER AND THE COMPANY, INCLUDING: (a) RESTRICTIONS ON USE OF THE RECORDED-DATA; (b) DISCLAIMERS AND WAIVERS OF WARRANTIES AND REPRESENTATIONS REGARDING COMPANY'S USE OF AND RELIANCE UPON THE RECORDED-DATA; AND (c) CUSTOMER'S FULL AND SOLE RESPONSIBILITY FOR ANY INFERENCE DRAWN OR DECISION MADE IN CONNECTION WITH THE USE OF THIS RECORDED-DATA.

OTHER SERVICES1	OTHER SERVICES2
OS1:	OS1:
OS2: 2-1/8" Phased	OS2:
OS3: Powerjet	OS3:
OS4: MPBT	OS4:
OS5: Cement Bailers	OS5:

REMARKS: RUN NUMBER 1

Correlated to Esso Solar Composite Log provided by client.

Objective: to conduct an RST (Sigma mode) over the interval HUD to 3510m.

making two passes at 900 ft/hr with the well shut in. Locating formation gas/water contact.

Matrix = Sandstone, BS = 9-7/8", CSIZ = 7-5/8", CWEI = 29.7 lb/ft

GOC found at 1625 m

QWC found at 1690 m

HUD tagged at 3561.0 M					
High GR observed.					
Schlumberger Crew:					
Days: Kevin Kerr (Crew chief), Nathan Simmons					
RUN 1			RUN 2		
SERVICE ORDER #:			SERVICE ORDER #:		
PROGRAM VERSION:			PROGRAM VERSION:		
FLUID LEVEL:			FLUID LEVEL:		
15C0-309			1625 m		
LOGGED INTERVAL	START	STOP	LOGGED INTERVAL	START	STOP
EQUIPMENT DESCRIPTION					
RUN 1			RUN 2		
SURFACE EQUIPMENT					
WITM-A PSC_16MHZ					
DOWNHOLE EQUIPMENT					

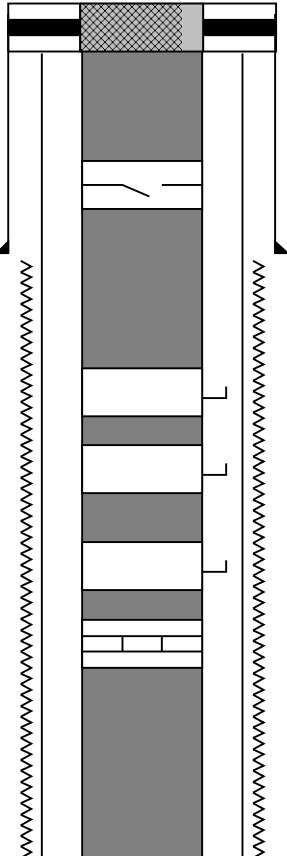
RSC-A Far
RSC-A PNG
RSC-A Nea
RSX-A PNG

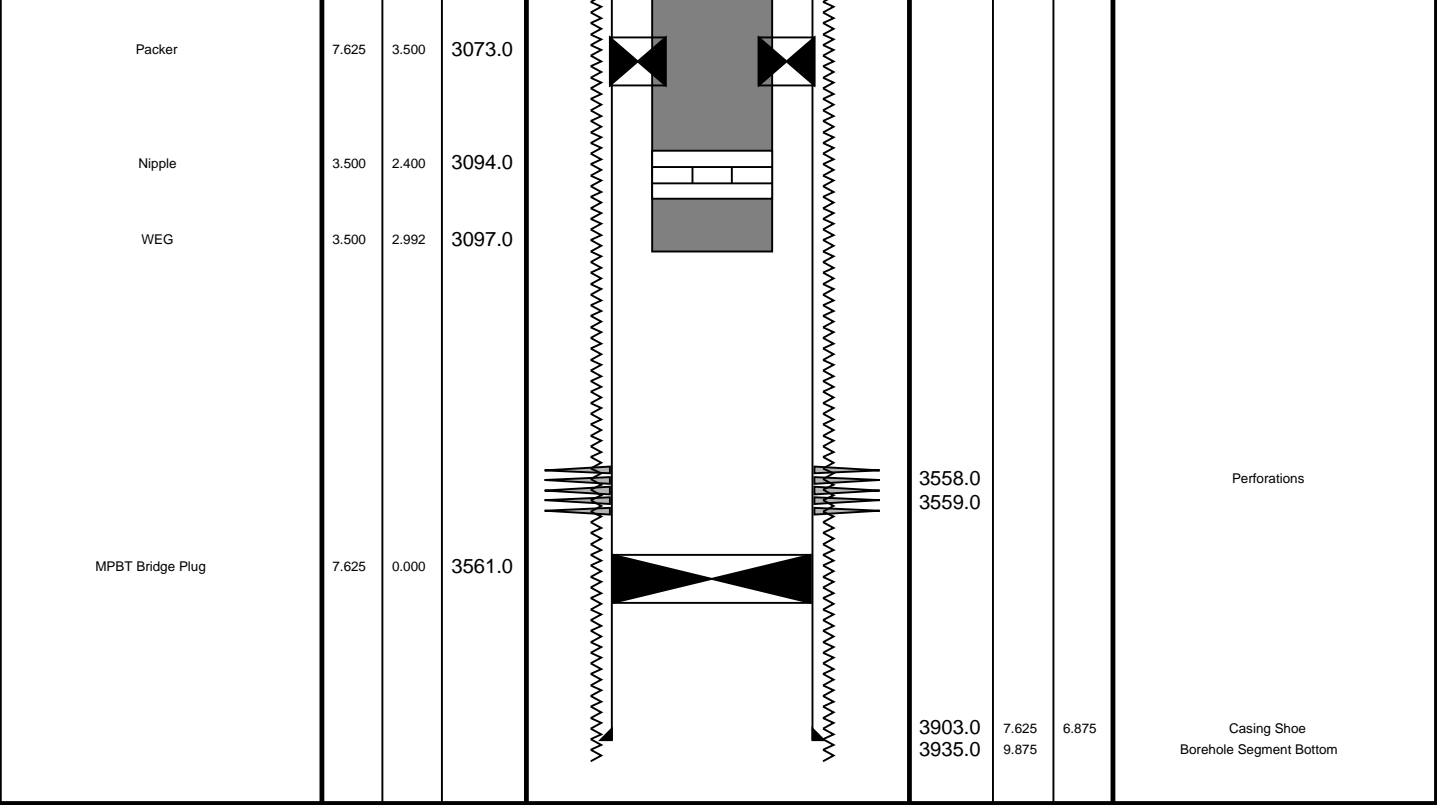
4.24

4.09

Tension HV 0.00
TOOL ZERO

MAXIMUM STRING DIAMETER 1.72 IN
MEASUREMENTS RELATIVE TO TOOL ZERO
ALL LENGTHS IN METERS

Production String	(in)		(m)	Well Schematic	(m)	(in)		Casing String
	OD	ID	MD		MD	OD	ID	
Tubing Hanger	7.625	3.500	19.0		19.0	10.750	Casing String	
Tubing	3.500	2.992				7.625	6.875	Casing String
SSSV	3.500	2.750	449.0		786.0	10.750		Casing Shoe
					816.0	9.875		9-7/8" Bit Size
Side Pocket Mandrel	3.500	2.800	1043.0					
Side Pocket Mandrel	3.500	2.810	1786.0					
Side Pocket Mandrel	3.500	2.800	2084.0					
Nipple	3.500	2.750	2100.0					

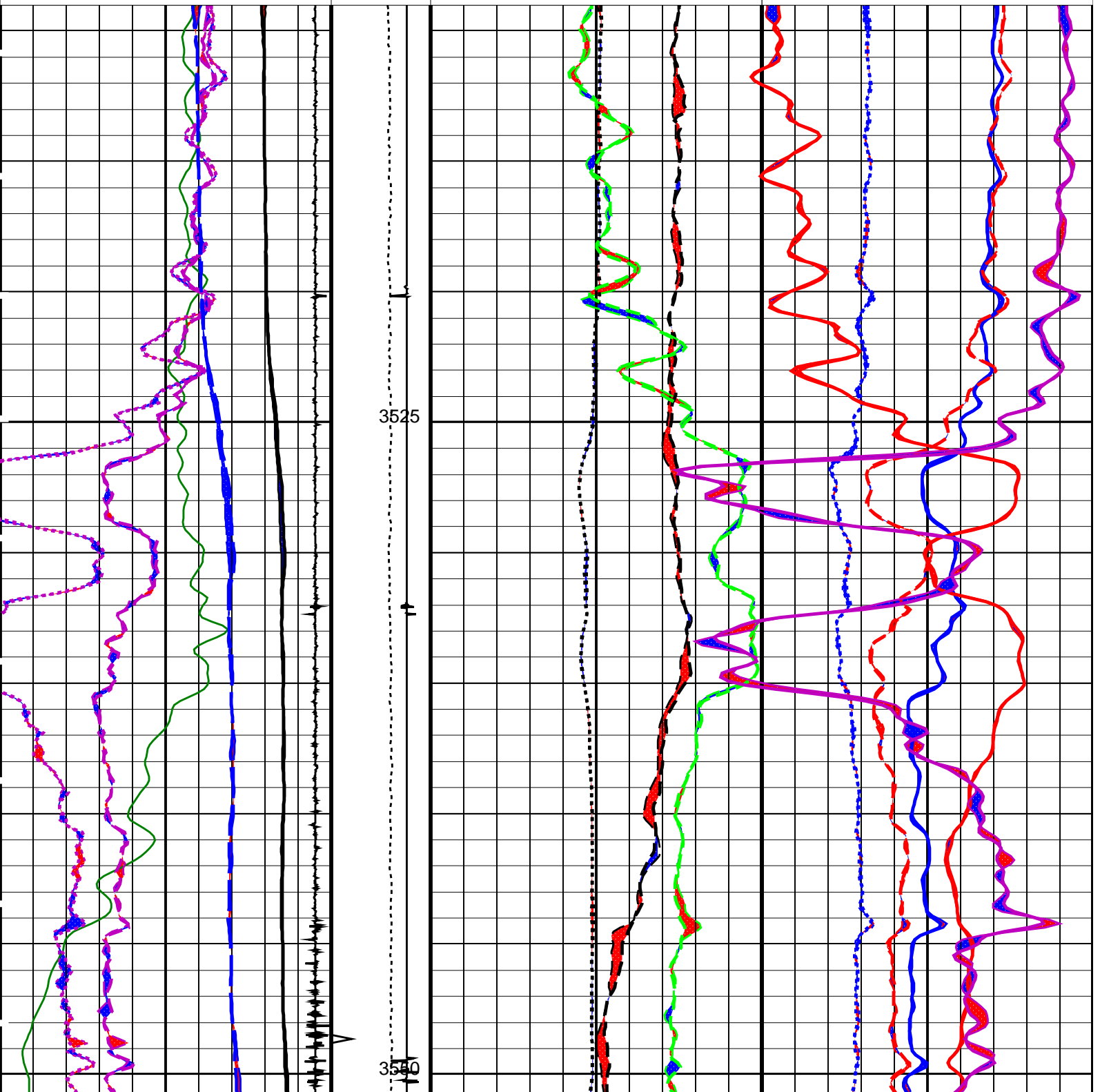
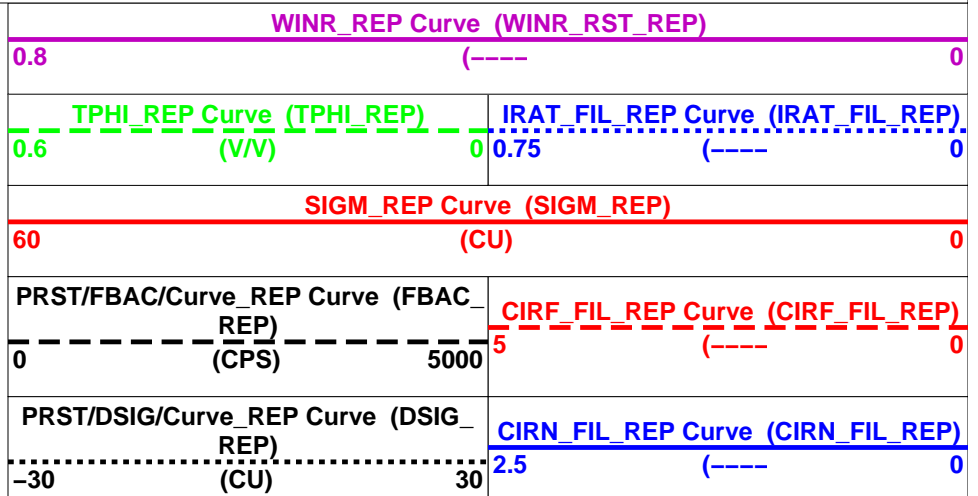
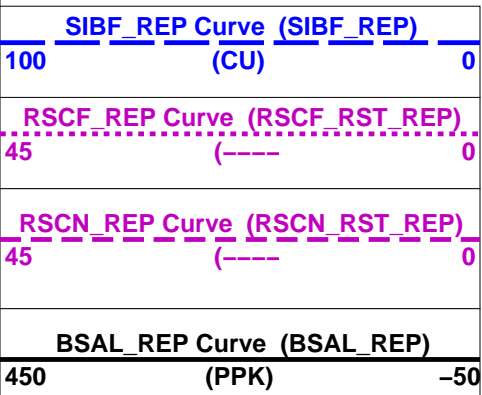


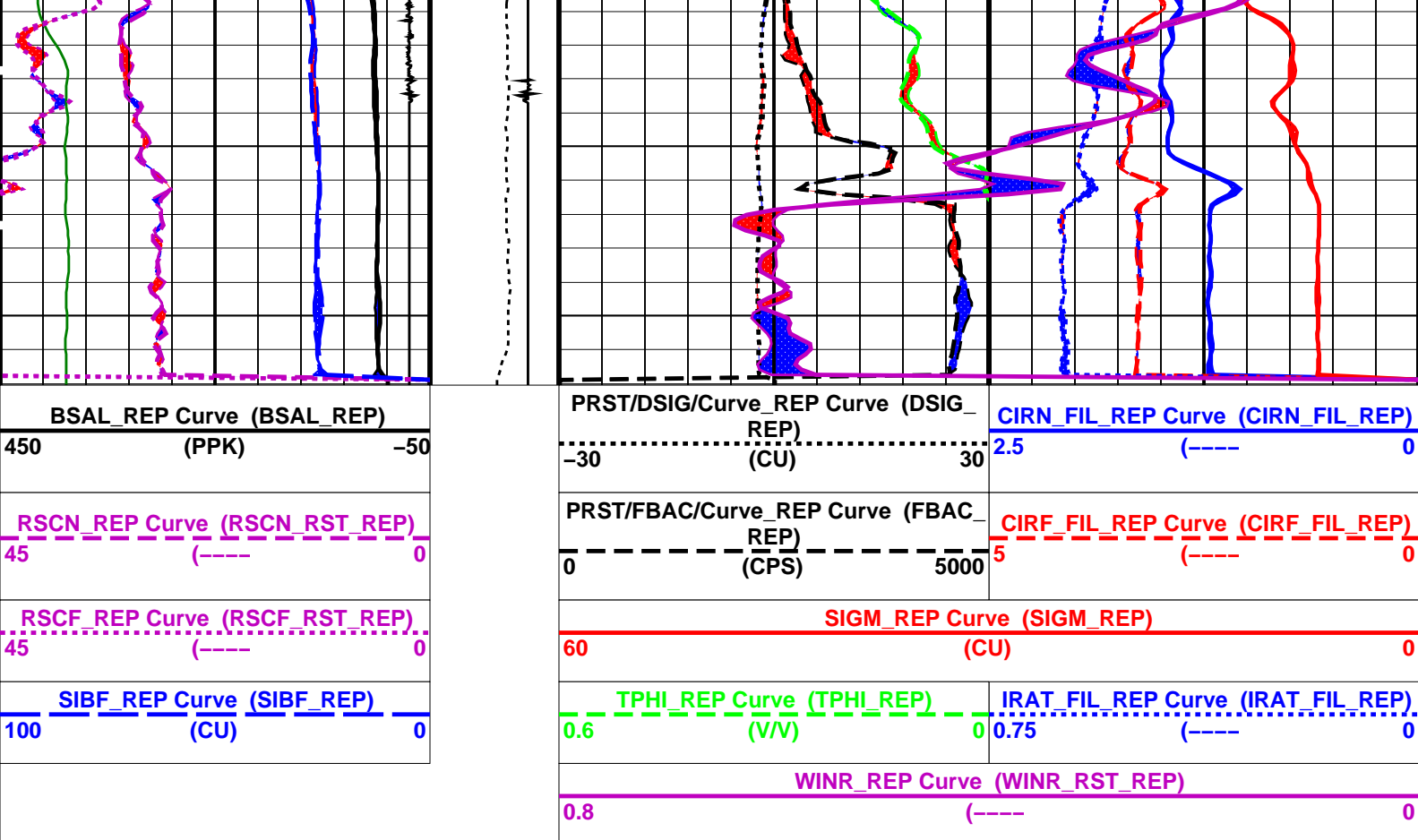
Merged Sigma Pass

MAXIS Field Log

Company: Esso Australia Pty Ltd. Well: FLA A25a

Input DLIS Files						
DEFAULT	RST_PSP_016PUP	FN:41	PRODUCER	25-Aug-2007 13:38	3562.0 M	3508.4 M
DEFAULT	RST_PSP_017PUP	FN:42	PRODUCER	25-Aug-2007 13:42	3562.0 M	3508.4 M
Output DLIS Files						
DEFAULT	RST_PSP_020PUP	FN:45	PRODUCER	26-Aug-2007 18:33	3562.0 M	3508.9 M
OP System Version: 15C0-309						
MCM						
RST-C	15C0-309	PSPT-A/B		15C0-309		





PIP SUMMARY

Time Mark Every 60 S

Format: RST_SIG_ANSW_REP

Vertical Scale: 1:200

Graphics File Created: 26-Aug-2007 18:33

OP System Version: 15C0-309

MCM

RST-C

15C0-309

PSPT-A/B

15C0-309

Input DLIS Files

DEFAULT	RST_PSP_016PUP	FN:41	PRODUCER	25-Aug-2007 13:38	3562.0 M	3508.4 M
DEFAULT	RST_PSP_017PUP	FN:42	PRODUCER	25-Aug-2007 13:42	3562.0 M	3508.4 M

Output DLIS Files

DEFAULT	RST_PSP_020PUP	FN:45	PRODUCER	26-Aug-2007 18:33
---------	----------------	-------	----------	-------------------

Schlumberger

RST Sigma Pass 2

MAXIS Field Log

Company: Esso Australia Pty Ltd.

Well: FLA A25a

Input DLIS Files

DEFAULT	RST_PSP_017LUP	FN:16	PRODUCER	25-Aug-2007 13:05	3565.6 M	3491.6 M
---------	----------------	-------	----------	-------------------	----------	----------

Output DLIS Files

DEFAULT

RST_PSP_017PUP

FN:42

PRODUCER

26-Aug-2007 18:17 3562.0 M

3508.4 M

OP System Version: 15C0-309

MCM

RST-C

15C0-309

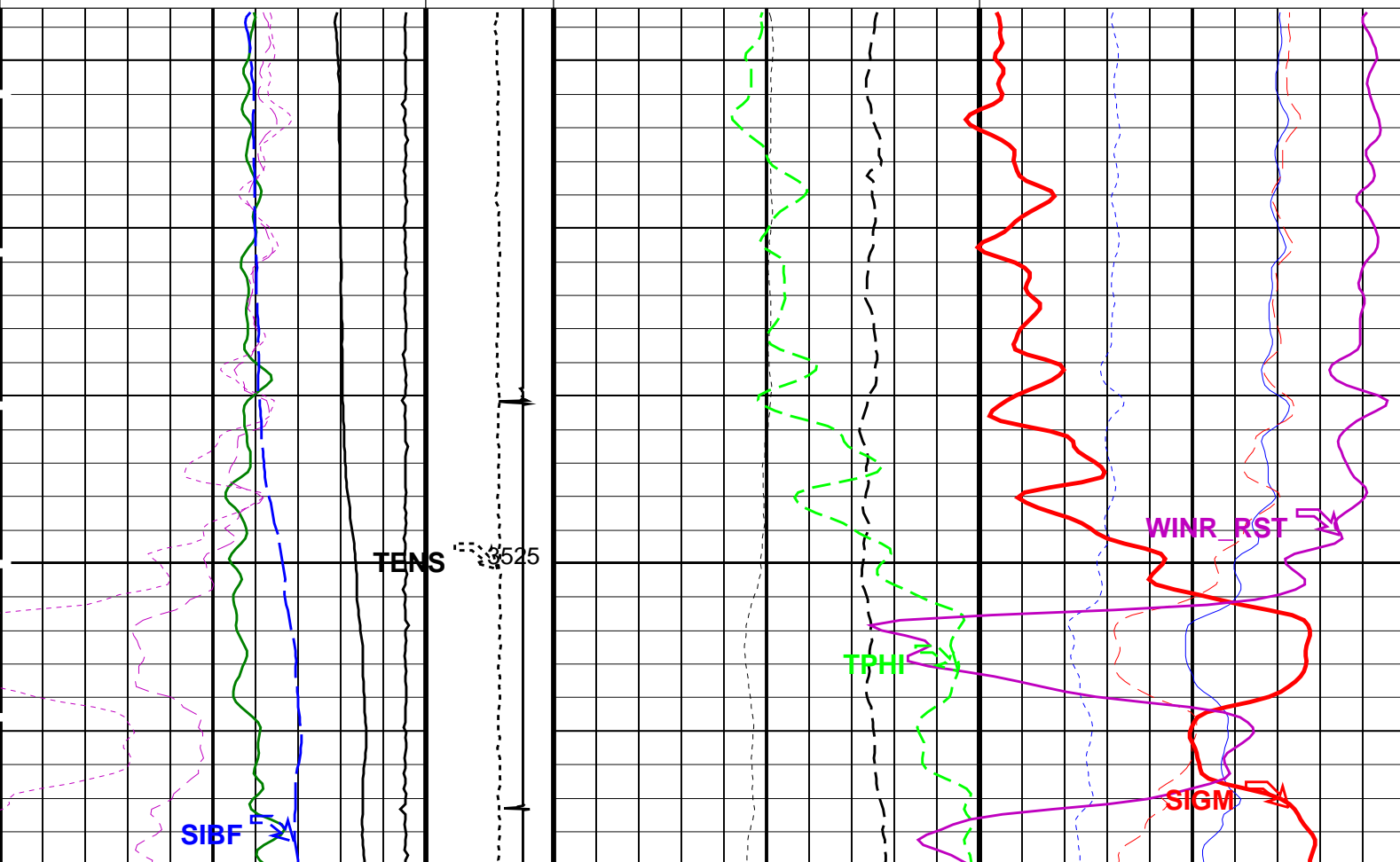
PSPT-A/B

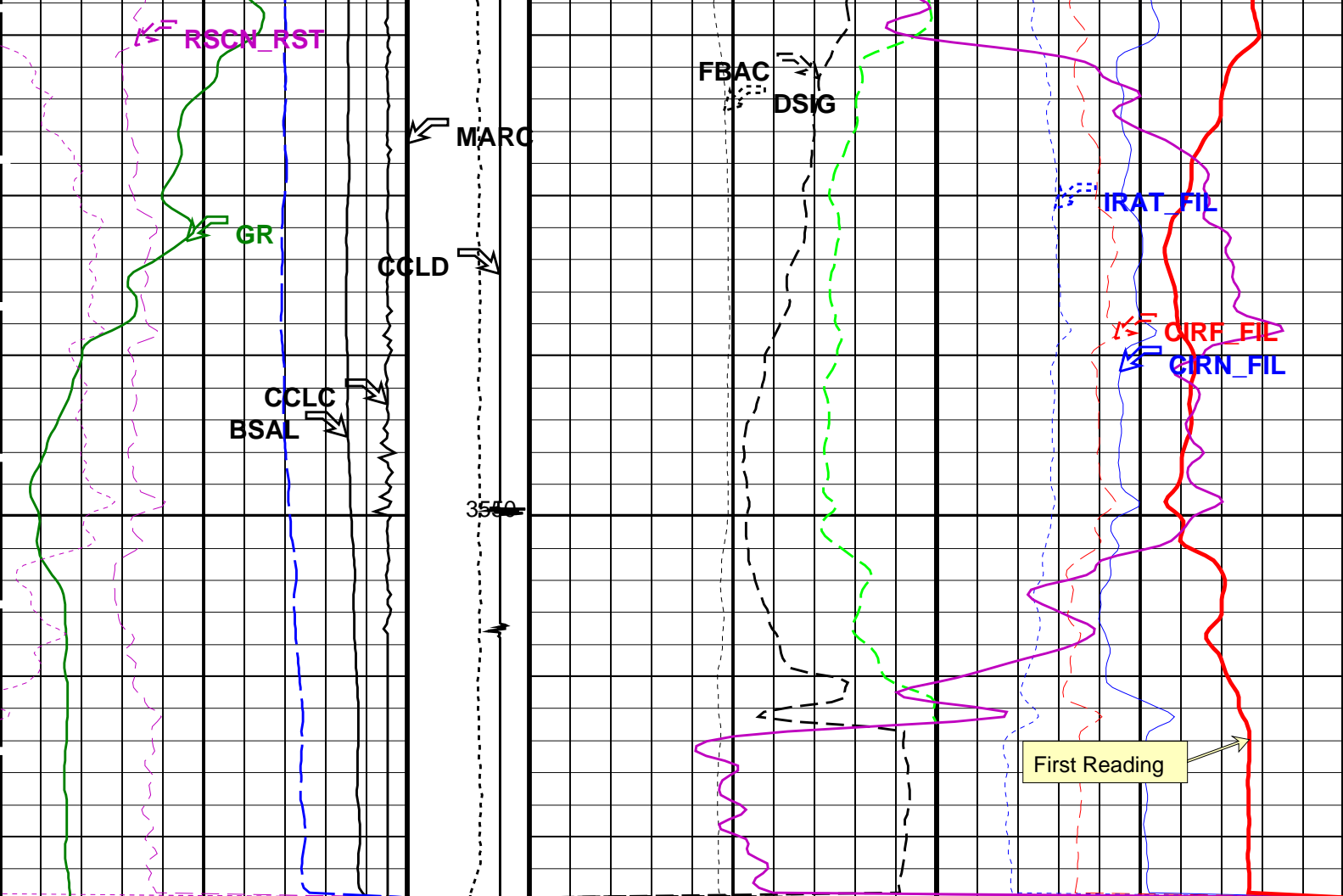
15C0-309

PIP SUMMARY

Time Mark Every 60 S

RST Far Effective Capture CR (RSCF_RST) 45 (----) 0		RST Weighted Inelastic Ratio (WINR_RST) 0.8 (----) 0	
RST Near Effective Capture CR (RSCN_RST) 45 (----) 0		RST Porosity (TPHI) (V/V) 0.6 (----) 0	
RST Sigma Borehole Fluid (SIBF) 100 (CU) 0		RST Inelastic Ratio (IRAT_FIL) 0.75 (----) 0	
Gamma Ray (GR) (GAPI) 0 2000		RST Sigma (SIGM) 60 (CU) 0	
(CCLC) (V) -19 1		MCS Far Background (filtered) (FBAC) 0 5000	
RST Borehole Salinity (BSAL) (PPK) 450 -50		RST Sigma Difference (DSIG) (CU) -30 30	
Minitron Arc Detection (MARC) 0 (----) 5		RST Capture to Inelastic Ratio Far (CIRF_FIL) 5 (----) 0	
Tension (TENS) (LBF) 1000 3000		RST Capture to Inelastic Ratio Near (CIRN_FIL) 2.5 (----) 0	
Discriminated CCL (CCLD) (V) 3 -1			





RST Borehole Salinity (BSAL) (PPK)	Discriminat ed CCL (CCLD)	RST Sigma Difference (DSIG) (CU)	RST Capture to Inelastic Ratio Near (CIRN_FIL)
450 (V)	3 (V) -1	-30 30	2.5 (----) 0
(CCLC)	Tension (TENS) (LBF)	MCS Far Background (filtered) (FBAC)	RST Capture to Inelastic Ratio Far (CIRF_FIL)
-19 (V)	1 1000 3000	0 5000	5 (----) 0
Gamma Ray (GR) (GAPI)	Minitron Arc Detection (MARC)	RST Sigma (SIGM)	
0 2000	0 (----) 5	60 (CU) 0	
RST Sigma Borehole Fluid (SIBF) (CU)		RST Porosity (TPHI) (V/V)	RST Inelastic Ratio (IRAT_FIL)
100 (CU) 0		0.6 (V/V) 0	0.75 (----) 0
RST Near Effective Capture CR (RSCN_ RST)		RST Weighted Inelastic Ratio (WINR_RST)	
45 (----) 0		0.8 (----) 0	
RST Far Effective Capture CR (RSCF_ RST)			
45 (----) 0			

PIP SUMMARY

Time Mark Every 60 S

Parameters

DLIS Name	Description	Value
RST-C: Reservoir Saturation Pro Tool C		
AIIR	RST Air Borehole	No

AKRB	RST Air Borehole	NO	
BHS	Borehole Status	CASED	
BSALOPT	RST Borehole Salinity Option	Unknown	
BSFL	RST Borehole Salinity Filter Length	51	
DFPC	RST Depth Filter Processing Constant	One	
DFPC_TDTL	RST Depth Filter Processing Constant (TDT-like)	Two	
MATR	Rock Matrix for Neutron Porosity Corrections	SANDSTONE	
NORM_IRAT_RST	RST Normalized Inelastic Ratio	0.48	
NORM_SIGM_RST	RST Normalized Sigma	30	CU
RGAI	Near/Far Gain Calibration Ratio	1	
SMBMO	RST Sigma Mode Background (Minitron Off)	No	
TIER_SIGM	RST Sigma Acquisition Mode	0_RST_Sigma	
	PSPT-B: Production Services Logging Platform		
BHS	Borehole Status	CASED	
MATR	Rock Matrix for Neutron Porosity Corrections	SANDSTONE	
	System and Miscellaneous		
BS	Bit Size	9.875	IN
BSAL	Borehole Salinity	-50000.00	PPM
DO	Depth Offset for Playback	4.0	M
PP	Playback Processing	NORMAL	

Format: RST_SIG_ANSW

Vertical Scale: 1:200

Graphics File Created: 26-Aug-2007 18:17

OP System Version: 15C0-309						
MCM						
RST-C	15C0-309	PSPT-A/B		15C0-309		
Input DLIS Files						
DEFAULT	RST_PSP_017LUP	FN:16	PRODUCER	25-Aug-2007 13:05	3565.6 M	3491.6 M
Output DLIS Files						
DEFAULT	RST_PSP_017PUP	FN:42	PRODUCER	26-Aug-2007 18:17		

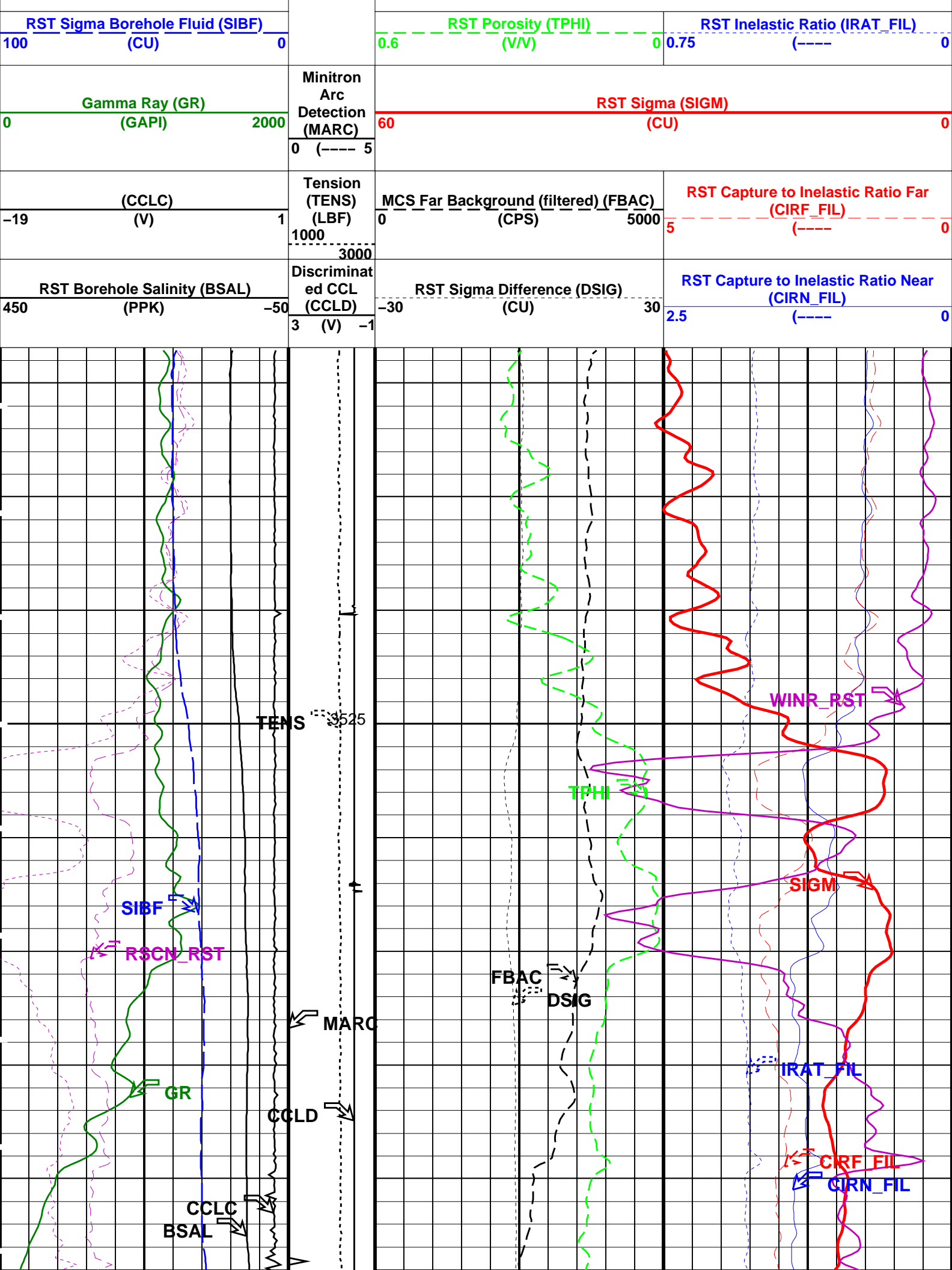
Schlumberger

RST Sigma Pass 1

MAXIS Field Log

Company: Esso Australia Pty Ltd.				Well: FLA A25a		
Input DLIS Files						
DEFAULT	RST_PSP_016LUP	FN:15	PRODUCER	25-Aug-2007 12:40	3567.4 M	3488.9 M
Output DLIS Files						
DEFAULT	RST_PSP_016PUP	FN:41	PRODUCER	26-Aug-2007 18:13	3562.0 M	3508.4 M
OP System Version: 15C0-309						
MCM						
RST-C	15C0-309	PSPT-A/B		15C0-309		

PIP SUMMARY			
Time Mark Every 60 S			
RST Far Effective Capture CR (RSCF_RST)			
45	(----	0	
RST Near Effective Capture CR (RSCN_RST)		RST Weighted Inelastic Ratio (WINR_RST)	
45	(----	0.8	(----- 0



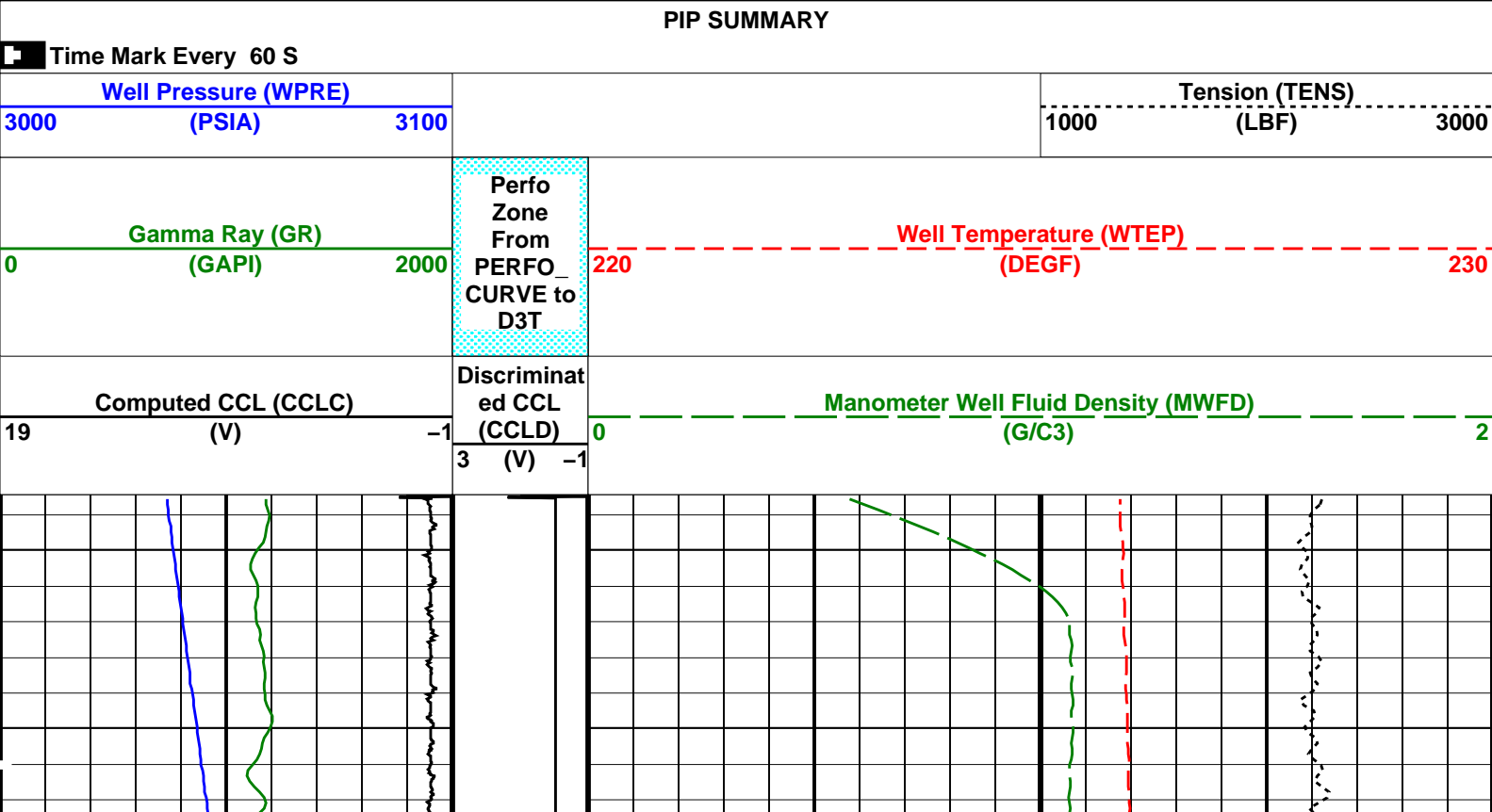
OP System Version: 15C0-309						
MCM						
RST-C	15C0-309	PSPT-A/B		15C0-309		
Input DLIS Files						
DEFAULT	RST_PSP_016LUP	FN:15	PRODUCER	25-Aug-2007 12:40	3567.4 M	3488.9 M
Output DLIS Files						
DEFAULT	RST_PSP_016PUP	FN:41	PRODUCER	26-Aug-2007 18:13		

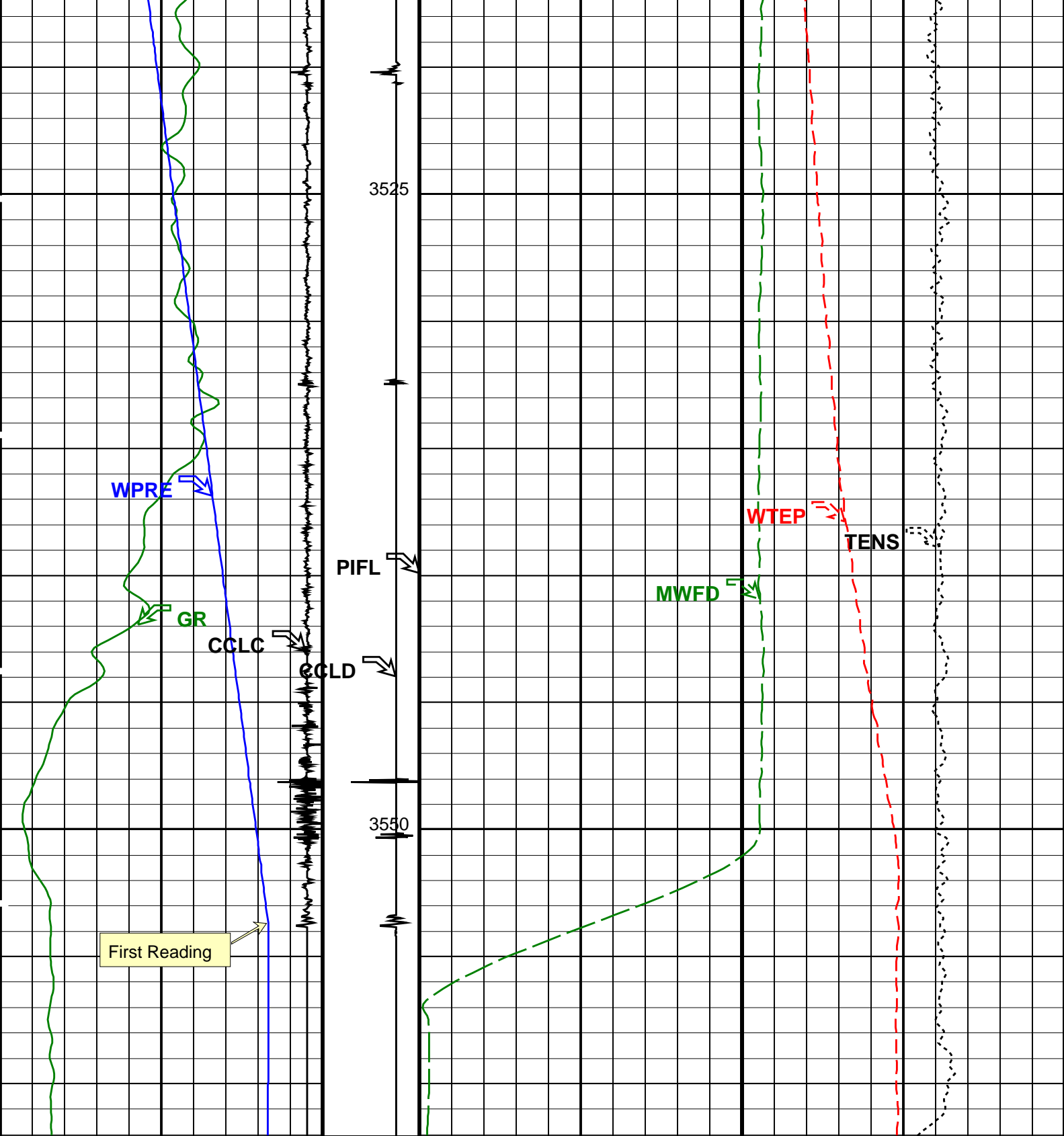
Schlumberger

Background GR Pass

MAXIS Field Log

Company: Esso Australia Pty Ltd.					Well: FLA A25a	
Input DLIS Files						
DEFAULT	RST_PSP_015LUP	FN:14	PRODUCER	25-Aug-2007 12:11	3567.8 M	3484.5 M
Output DLIS Files						
DEFAULT	RST_PSP_015PUP	FN:40	PRODUCER	26-Aug-2007 18:10	3562.0 M	3508.4 M
OP System Version: 15C0-309						
MCM						
RST-C	15C0-309	PSPT-A/B		15C0-309		





<div>Computed CCL (CCLC) (V)</div> <div>19-1</div>	<div>Discriminat ed CCL (CCLD) (V)</div> <div>3-1</div>	<div>Manometer Well Fluid Density (MWFD) (G/C3)</div> <div>02</div>
<div>Gamma Ray (GR) (GAPI)</div> <div>02000</div>	<div>Perfo Zone From PERFO_ CURVE to D3T</div>	<div>Well Temperature (WTEP) (DEGF)</div> <div>220230</div>
<div>Well Pressure (WPRE) (PSIA)</div> <div>30003100</div>		<div>Tension (TENS) (LBF)</div> <div>10003000</div>

Time Mark Every 60 S

Format: PBMS Correlation

Vertical Scale: 1:200

Graphics File Created: 26-Aug-2007 18:10

PIP SUMMARY

OP System Version: 15C0-309

MCM

RST-C

15C0-309

PSPT-A/B

15C0-309

Parameters

DLIS Name	Description	Value
GDEV	RST-C: Reservoir Saturation Pro Tool C	
	Average Angular Deviation of Borehole from Normal	47 DEG
GDEV	PSPT-B: Production Services Logging Platform	
	Average Angular Deviation of Borehole from Normal	47 DEG
	System and Miscellaneous	
DO	Depth Offset for Playback	4.2 M
PP	Playback Processing	NORMAL

Input DLIS Files

DEFAULT	RST_PSP_015LUP	FN:14	PRODUCER	25-Aug-2007 12:11	3567.8 M	3484.5 M
---------	----------------	-------	----------	-------------------	----------	----------

Output DLIS Files

DEFAULT	RST_PSP_015PUP	FN:40	PRODUCER	26-Aug-2007 18:10
---------	----------------	-------	----------	-------------------

Schlumberger

Before Survey Calibrations

MAXIS Field Log

Calibration and Check Summary

Measurement	Nominal	Master	Before	After	Change	Limit	Units
Production Services Logging Platform Wellsite Calibration – Detector Calibration							
Before: 24-Aug-2007 10:28							
Gamma-Ray Jig-Bkg	165.0	N/A	176.4	N/A	N/A	N/A	GAPI

Production Services Logging Platform / Equipment Identification

Primary Equipment:

Production Logging Platform (CQG-F)

PSPT – B

PSP Basic Measurement Sonde (CQG_F)

PBMS – B

1747

PSP Basic measurement module

PBMS –

PSP CCL

CCL –

PSP GR

GR –

PSP RTD Well Temperature

RTD_ –

PSP Crystal Quartz Gauge Type F

CQG_ –

PSP Telemetry and bus master cartridge

PSTC –

1768

Auxiliary Equipment:

Production Services Logging Platform Wellsite Calibration											
Detector Calibration											
Phase	Gamma-Ray Background GAPI			Value	Phase	Gamma-Ray Jig-Bkg GAPI			Value		
Before	<div><div></div></div>			9.560	Before	<div><div></div></div>			176.4		
0 (Minimum)				30.00 (Nominal)	120.0 (Maximum)		150.0 (Minimum)			165.0 (Nominal)	180.0 (Maximum)
Before: 24-Aug-2007 10:28											

Company:

Well:

Field:

Rig:

Country:

Esso Australia Pty Ltd.

FLA A25a

Flounder

Prod 3 / Flounder

Australia

Schlumberger

RST-C

Sigma Log

25-Aug-2007