

Company: Esso Australia Pty Ltd.

Well: A-14a  
Field: Bream A  
Rig : Prod4 / Crane

Country: Australia

2 1/8" Powerjet Perforation  
7"HPI Plug  
Setting Record

Prod4 / Crane  
Bream A  
Gippsland  
A-14a  
Esso Australia Pty Ltd.

LOCATION	
Gippsland	Elev.: K.B. 32.82 m
Basin	G.L. -59 m
Bass Strait	D.F. 32.82 m
Permanent Datum:	M.S.L.
Log Measured From:	D.F.
Drilling Measured From:	D.F.
State : Victoria	Max. Well Deviation 49 deg
	Longitude 147 46'15"E
	Latitude 038 30'04"S

Logging Date	16-Sep-2007		
Run Number	1 thru 3		
Depth Driller	2493.8 m		
Schlumberger Depth	2493.8 m		
Bottom Log Interval	2493.8 m		
Top Log Interval	2450 m		
Casing Fluid Type	Production Fluids		
Salinity			
Density			
Fluid Level	1070 m		
BIT/CASING/TUBING STRING			
Bit Size	8.500 in		
From			
To			
Casing/Tubing Size	7.000 in		
Weight	26 lbn/ft		
Grade	L-80		
From	12.3 m		
To	3061.29 m		
Maximum Recorded Temperatures	206 degF		
Logger On Bottom	16-Sep-2007	Time	13:00
Unit Number	889	Location	Prod4 / Ausl
Recorded By	G Wright. S Gilbert		
Witnessed By	B White.		

Run 1			
PVT DATA			
Oil Density			
Water Salinity			
Gas Gravity			
Bo			
Bw			
1/Bg			
Bubble Point Pressure			
Bubble Point Temperature			
Solution GOR			
Maximum Deviation	49 deg		
CEMENTING DATA			
Primary/Squeeze	Primary		
Casing String No			
Lead Cement Type			
Volume			
Density			
Water Loss			
Additives			
Tail Cement Type			
Volume			
Density			
Water Loss			
Additives			
Expected Cement Top			
Logging Date			
Run Number			
Depth Driller			
Schlumberger Depth			
Bottom Log Interval			
Top Log Interval			
Casing Fluid Type			
Salinity			
Density			
Fluid Level			
BIT/CASING/TUBING STRING			
Bit Size			
From			
To			
Casing/Tubing Size			
Weight			
Grade			
From			
To			
Maximum Recorded Temperatures			
Logger On Bottom		Time	
Unit Number		Location	
Recorded By			
Witnessed By			

## DEPTH SUMMARY LISTING

Date Created: 14-SEP-2007 8:15:45

### Depth System Equipment

Depth Measuring Device		Tension Device		Logging Cable	
Type:	IDW-EB	Type:	PSDS/OSDS	Type:	2-32ZT
Serial Number:	6373	Serial Number:	325357	Serial Number:	24425
Calibration Date:	4-Jan-2007	Calibration Date:	05-Sep-2007	Length:	5584.85 M
Calibrator Serial Number:	9	Calibrator Serial Number:	1174	Conveyance Method: Wireline Rig Type: Rigless	
Calibration Cable Type:	2-23ZT	Calibration Gain:	0.95		
Wheel Correction 1:	-2	Calibration Offset:	268.00		
Wheel Correction 2:	-4				

### Depth Control Parameters

Log Sequence:	Subsequent Log In the Well
Reference Log Name:	Solar Composite Log
Reference Log Run Number:	
Reference Log Date:	.

### Depth Control Remarks

1. IDW used as primary depth control.
2. Z-chart used as secondary backup
3.
4.
5.
6.

#### DISCLAIMER

THE USE OF AND RELIANCE UPON THIS RECORDED-DATA BY THE HEREIN NAMED COMPANY (AND ANY OF ITS AFFILIATES, PARTNERS, REPRESENTATIVES, AGENTS, CONSULTANTS AND EMPLOYEES) IS SUBJECT TO THE TERMS AND CONDITIONS AGREED UPON BETWEEN SCHLUMBERGER AND THE COMPANY, INCLUDING: (a) RESTRICTIONS ON USE OF THE RECORDED-DATA; (b) DISCLAIMERS AND WAIVERS OF WARRANTIES AND REPRESENTATIONS REGARDING COMPANY'S USE OF AND RELIANCE UPON THE RECORDED-DATA; AND (c) CUSTOMER'S FULL AND SOLE RESPONSIBILITY FOR ANY INFERENCE DRAWN OR DECISION MADE IN CONNECTION WITH THE USE OF THIS RECORDED-DATA.

OTHER SERVICES1
OS1: None
OS2:
OS3:
OS4:
OS5:
REMARKS: RUN NUMBER 1
Log correlated to ExxonMobil composite supplied with logging program.
Maximum well deviation = 49 degrees at 900m MDKB.
Objective: Perforate the well using a 4m 2 1/8" 45deg Phased Powerjet gun
over the interval 2462m to 2466m MDKB. Set a 7"HPI Plug with top of seal
@ 2481m MDKB.
Befor Gun- SBHP: 2583psia SBHT: 203degf

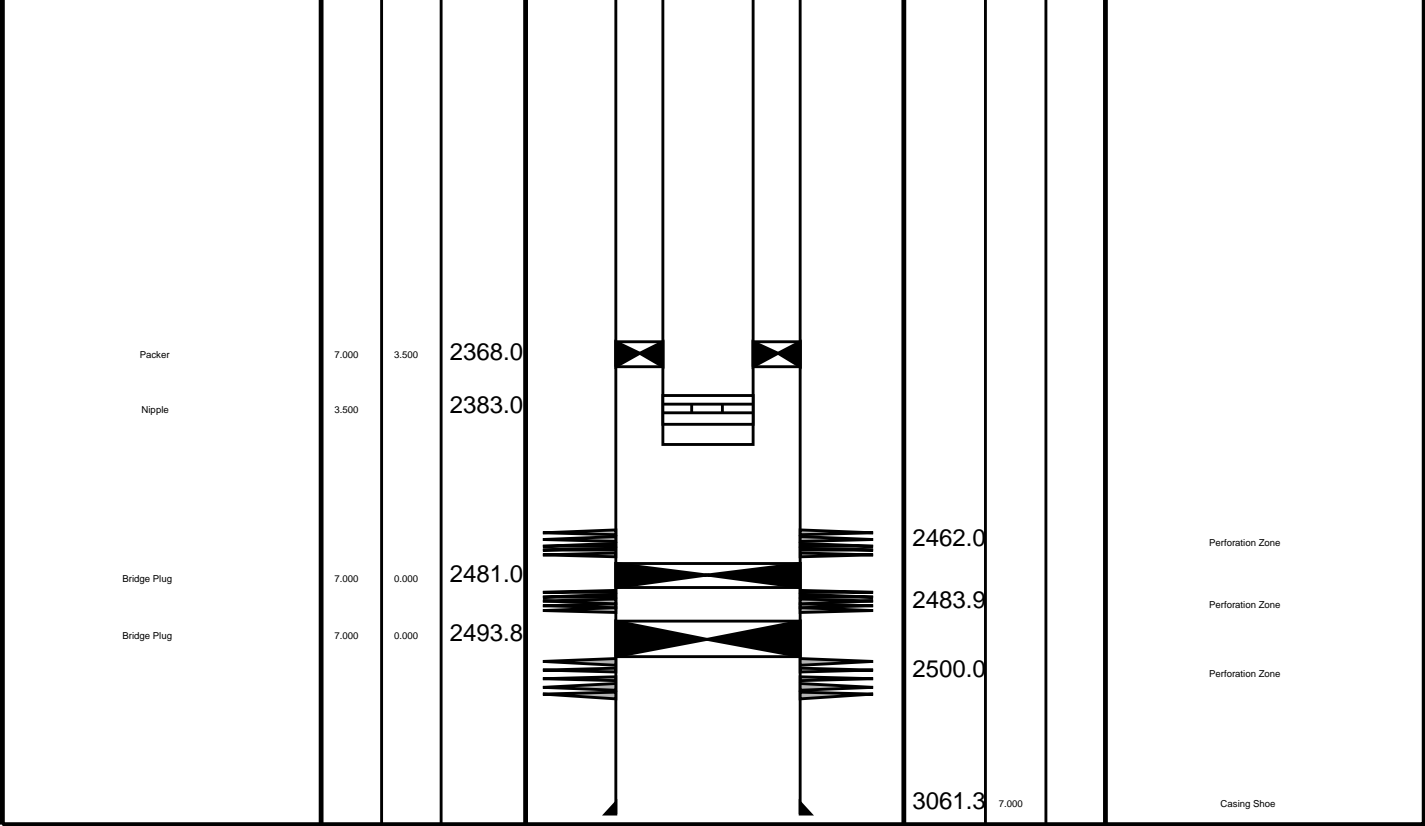
Crew : John Light & Jake Annear.

STOP

RUN 2

\_\_\_ TOOL ZERO



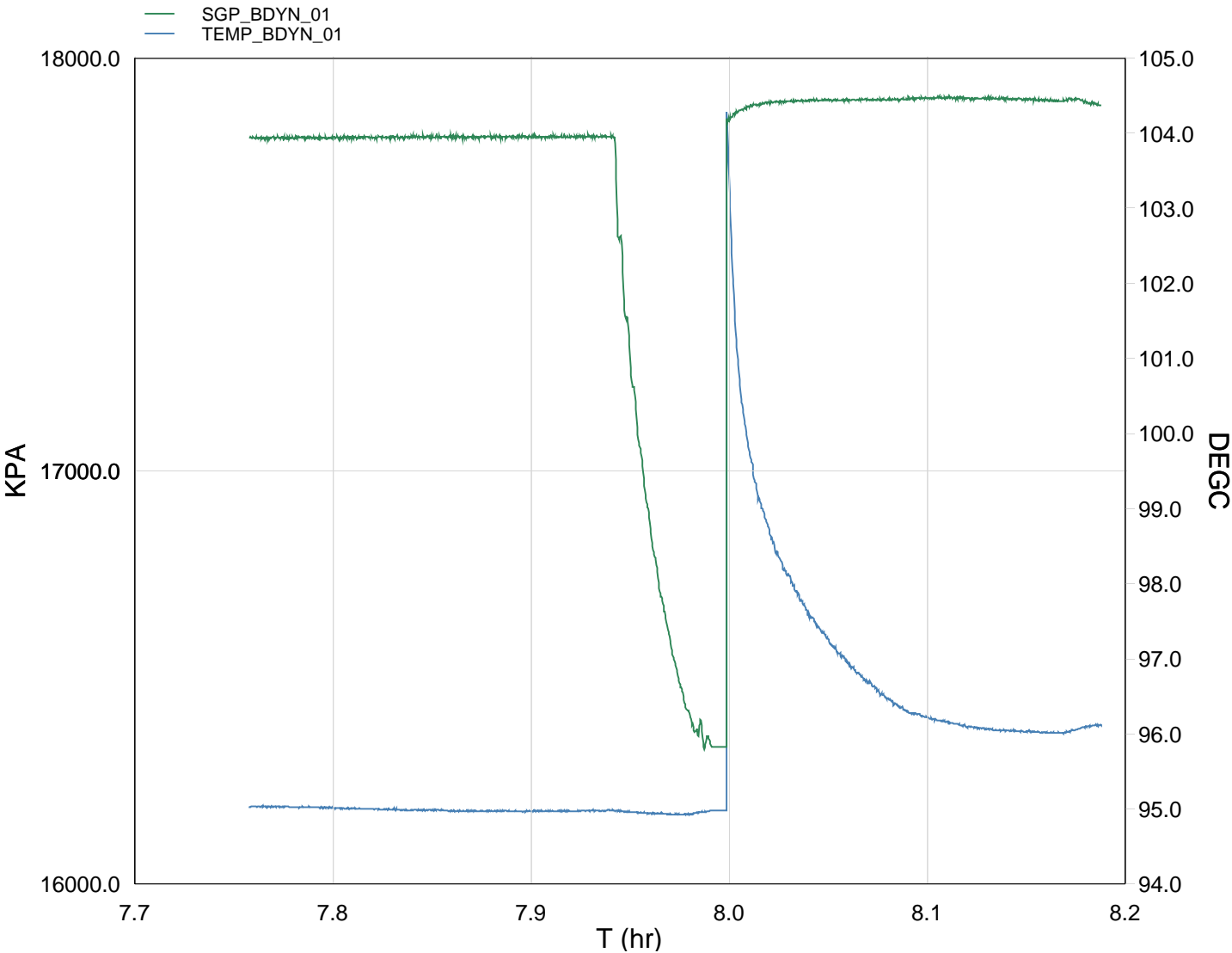


## Job Event Summary

MAXIS Field Log

### Schlumberger Job Event Summary

	Time	Elapsed Time	Depth (M)	File
Log Pass (up)	16-Sep-2007 15:24	000:05	2484.9 - 2440.5	PERFO_074LUP
Log Pass (up)	16-Sep-2007 15:31	000:24	2485.0 - 2442.5	PERFO_075LUP
Log Pass (up)	16-Sep-2007 15:56	000:02	2472.8 - 2438.9	PERFO_076LUP
Log Pass (up)	18-Sep-2007 7:30	000:06	2467.1 - 2422.2	PERFO_082LUP
Log Pass (up)	18-Sep-2007 7:40	000:03	2467.1 - 2455.3	PERFO_083LUP
Log Pass (up)	18-Sep-2007 7:43	000:32	2466.4 - 2418.0	PERFO_084LUP
Station Log	18-Sep-2007 7:45	000:26	2457.7 - 3.9	PERFO_085LTP

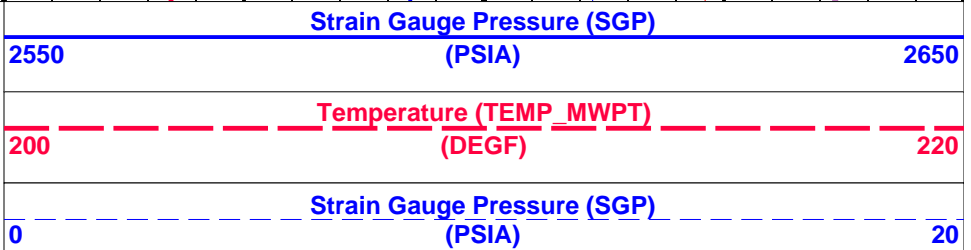
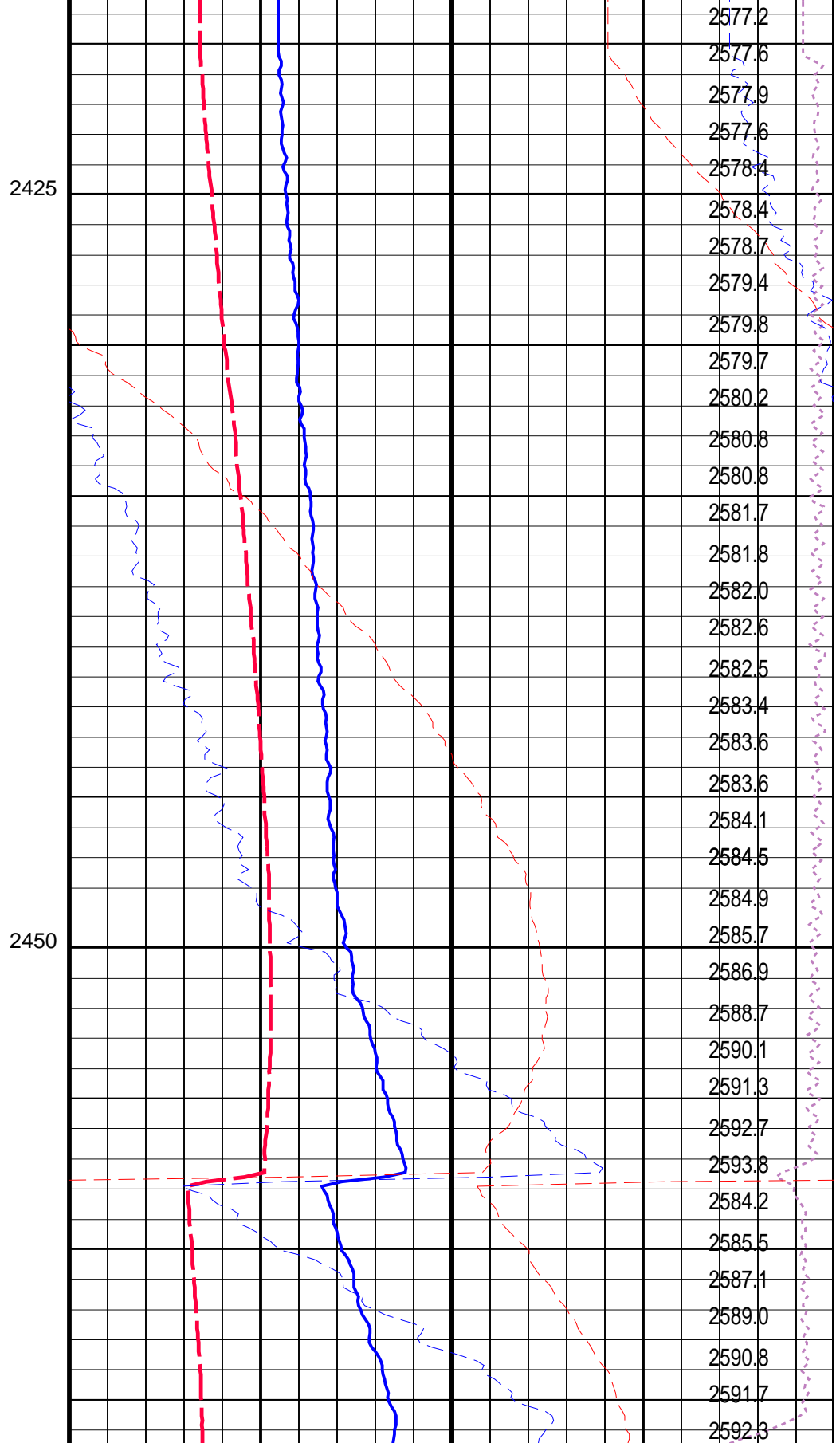
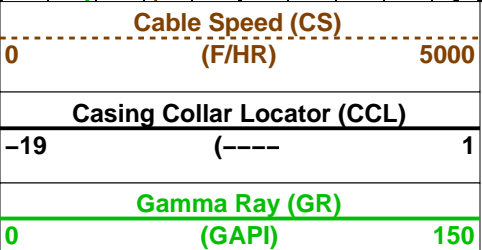
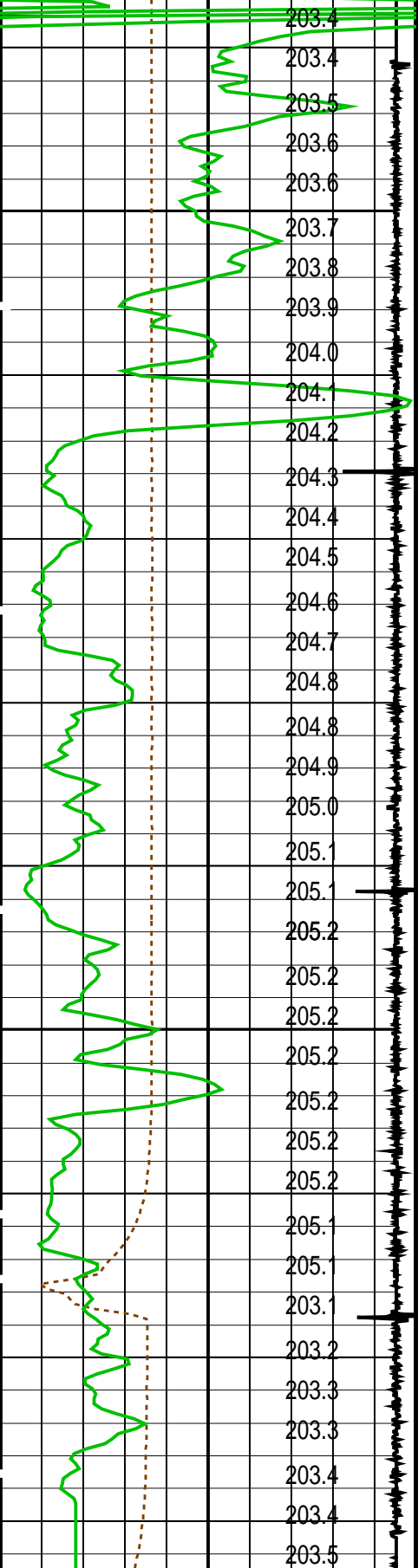


TIME    TEMP\_MWPT\_S    SGPA\_SL

2100.0	203.05	2582.890
2160.0	203.05	2582.652
2220.0	203.04	2582.733
2280.0	203.03	2582.866
2340.0	203.00	2582.957
2400.0	202.98	2583.125
2460.0	202.97	2582.999
2520.0	202.96	2582.937

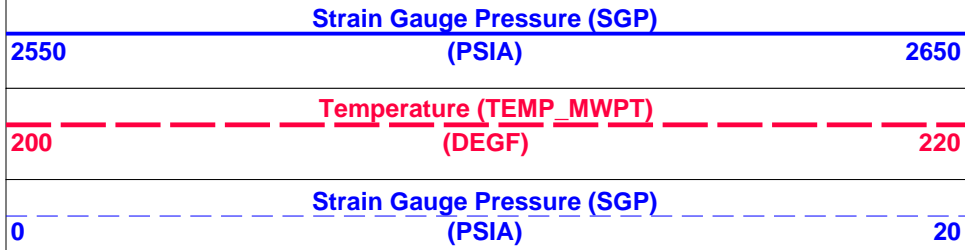
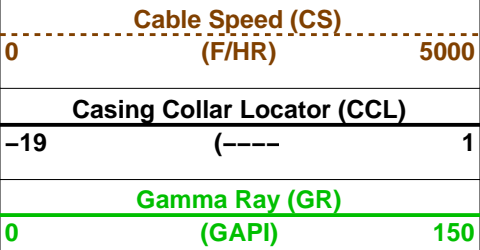
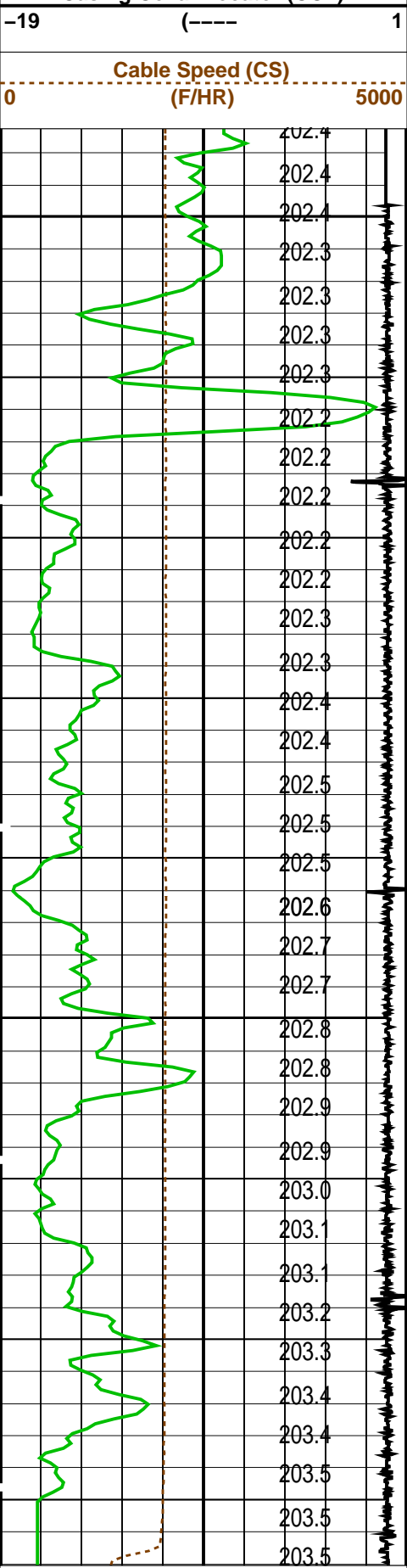
MAXIS Field Log

2550 (PSIA) 2650

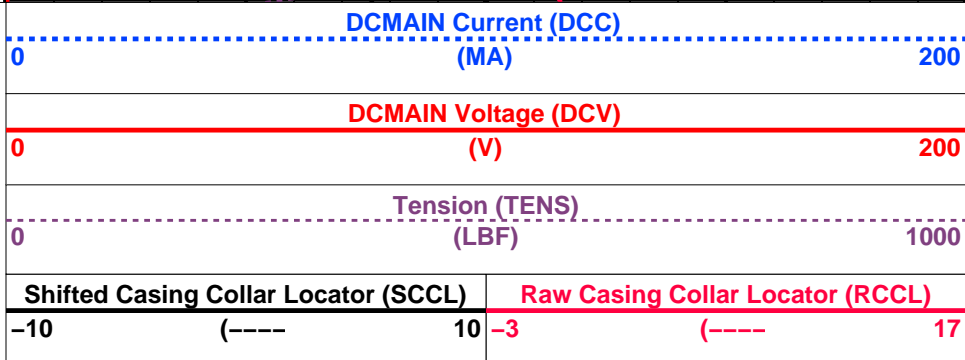
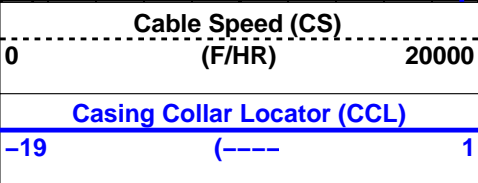
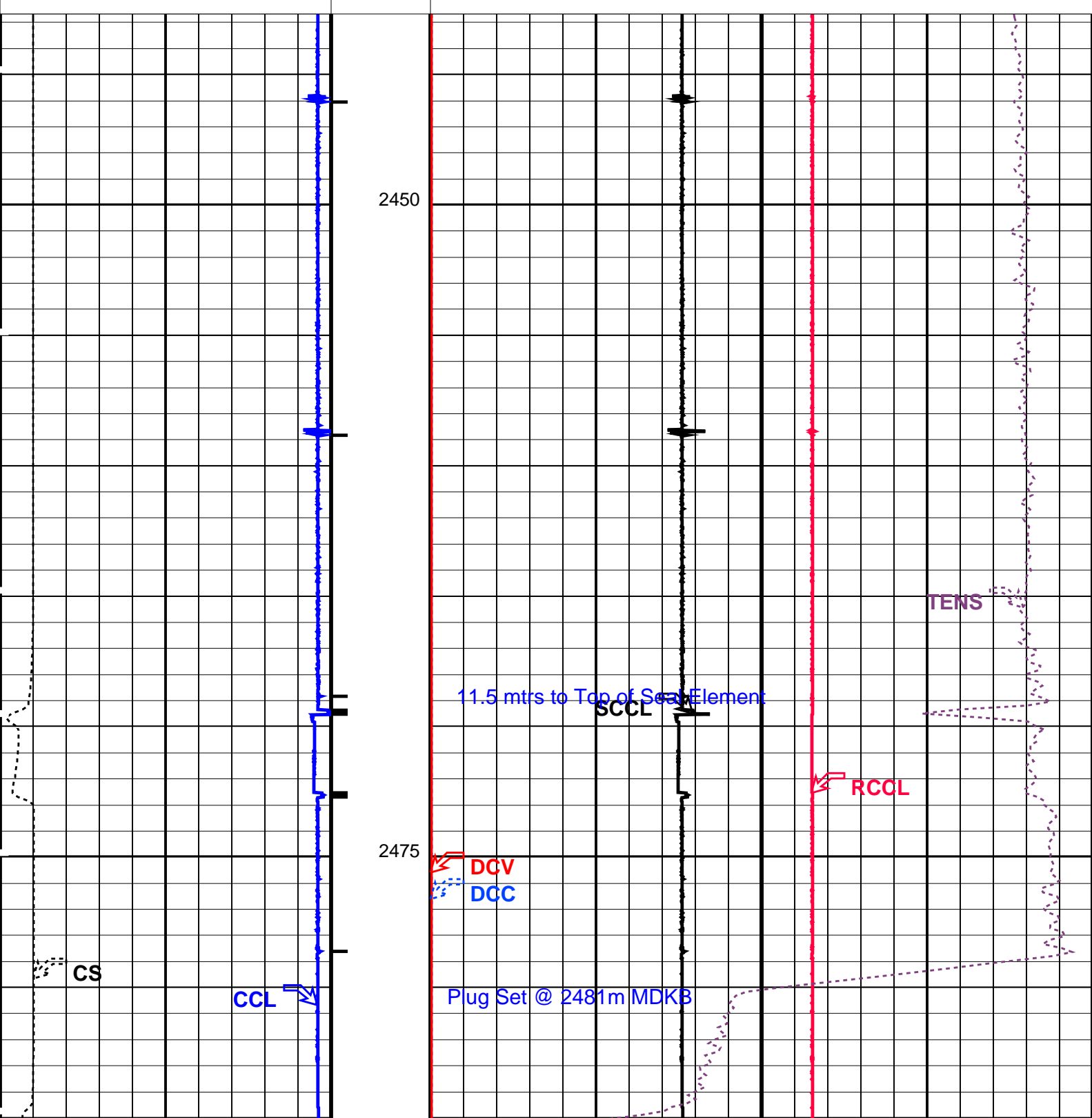




CCL From CCL to T1		Temperature (TEMP_MWPT) (DEGF)		Tension (TENS) (LBF)		Pressure (SGP) (PSIA)	
		0		0		2000	
PIP SUMMARY							
Time Mark Every 60 S							
Parameters							
DLIS Name		Description			Value		
MWPT-CA: MEASUREMENT WHILE PERFORATING TOOL							
DEVI_FL_CORR		Deviation Angle for Flow Line Correction			0 DEG		
FLD		Flow Line Density			1 G/C3		
MWPT_NULL_SOURCE		MWPT NULL Temperature Source			TEMS		
MWPT_NULL_TEMP		MWPT NULL Temperature			0.0 DEGC		
Format: MWP		Vertical Scale: 1:200		Graphics File Created: 18-Sep-2007 07:43			
OP System Version: 14C0-302							
MCM							
MWP_GUN		14C0-302		MWPT-CA		14C0-302	
MWGT-AA		14C0-302					
Output DLIS Files							
DEFAULT		PERFO_084LUP		FN:32 PRODUCER		18-Sep-2007 07:43	
<div><div><div>Schlumberger</div></div><div>Correlation Pass</div></div> <div>MAXIS Field Log</div>							
Company: Esso Australia Pty Ltd.							
Well: A-14a							
Output DLIS Files							
DEFAULT		PERFO_082LUP		FN:30 PRODUCER		18-Sep-2007 07:30	
OP System Version: 14C0-302							
MCM							
MWP_GUN		14C0-302		MWPT-CA		14C0-302	
MWGT-AA		14C0-302					
PIP SUMMARY							
Time Mark Every 60 S							
		Temperature (TEMP_MWPT) (DEGF)		Tension (TENS) (LBF)		Pressure (SGP) (PSIA)	
		0		0		2000	
CCL From CCL to T1		Temperature (TEMP_MWPT) (DEGF)		Tension (TENS) (LBF)		Pressure (SGP) (PSIA)	
		0		0		2000	
Gamma Ray (GR) (GAPI)		150		Strain Gauge Pressure (SGP) (PSIA)		20	
Casing Collar Locator (CCL)				Temperature (TEMP_MWPT) (DEGF)			
				0			



CCL From CCL to T1		Temperature (TEMP_MWPT) (DEGF)		02	
Temperature (TEMP_MWPT) (DEGF)		Tension (TENS) (LBF)		02000	
		Pressure (SGP) (PSIA)			
PIP SUMMARY					
Time Mark Every 60 S					
Parameters					
DLIS Name		Description		Value	
MWPT-CA: MEASUREMENT WHILE PERFORATING TOOL					
DEVI_FL_CORR		Deviation Angle for Flow Line Correction		0 DEG	
FLD		Flow Line Density		1 G/C3	
MWPT_NULL_SOURCE		MWPT NULL Temperature Source		TEMS	
MWPT_NULL_TEMP		MWPT NULL Temperature		0.0 DEGC	
Format: MWP		Vertical Scale: 1:200		Graphics File Created: 18-Sep-2007 07:30	
OP System Version: 14C0-302					
MCM					
MWP_GUN		14C0-302		MWPT-CA 14C0-302	
MWGT-AA		14C0-302			
Output DLIS Files					
DEFAULT		PERFO_082LUP		FN:30 PRODUCER 18-Sep-2007 07:30	
Schlumberger					
7" HPI Plug Set @ 2481 m MDKB					
MAXIS Field Log					
Output DLIS Files					
DEFAULT		PERFO_075LUP		FN:23 PRODUCER 16-Sep-2007 15:31 2485.0 M 2442.5 M	
OP System Version: 14C0-302					
MCM					
SHM_GUN		14C0-302		CCL-L 14C0-302	
PIP SUMMARY					
Casing Collars					
Time Mark Every 60 S					
Casing Collar Locator (CCL)		Shifted Casing Collar Locator (SCCL)		Raw Casing Collar Locator (RCCL)	
-19 (----) 1		-10 (----) 10		-3 (----) 17	
Cable Speed (CS) (F/HR)		Tension (TENS) (LBF)		DCMAIN Voltage (DCV) (V)	
020000		01000		0200	
		DCMAIN Current (DCC) (MA)			
		0200			



#### PIP SUMMARY

— Casing Collars

Time Mark Every 60 S


Parameters

DLIS Name	Description	Value
CCL-L: Casing Collar Locator		
CCLD	CCL reset delay	12 IN
CCLT	CCL Detection Level	0.3 V

Format: PERFO    Vertical Scale: 1:200    Graphics File Created: 16-Sep-2007 15:31

OP System Version: 14C0-302			
MCM			
SHM_GUN	14C0-302	CCL-L	14C0-302

Output DLIS Files			
DEFAULT	PERFO_075LUP	FN:23    PRODUCER	16-Sep-2007 15:31



7" HPI Plug  
Correlation Pass

MAXIS Field Log

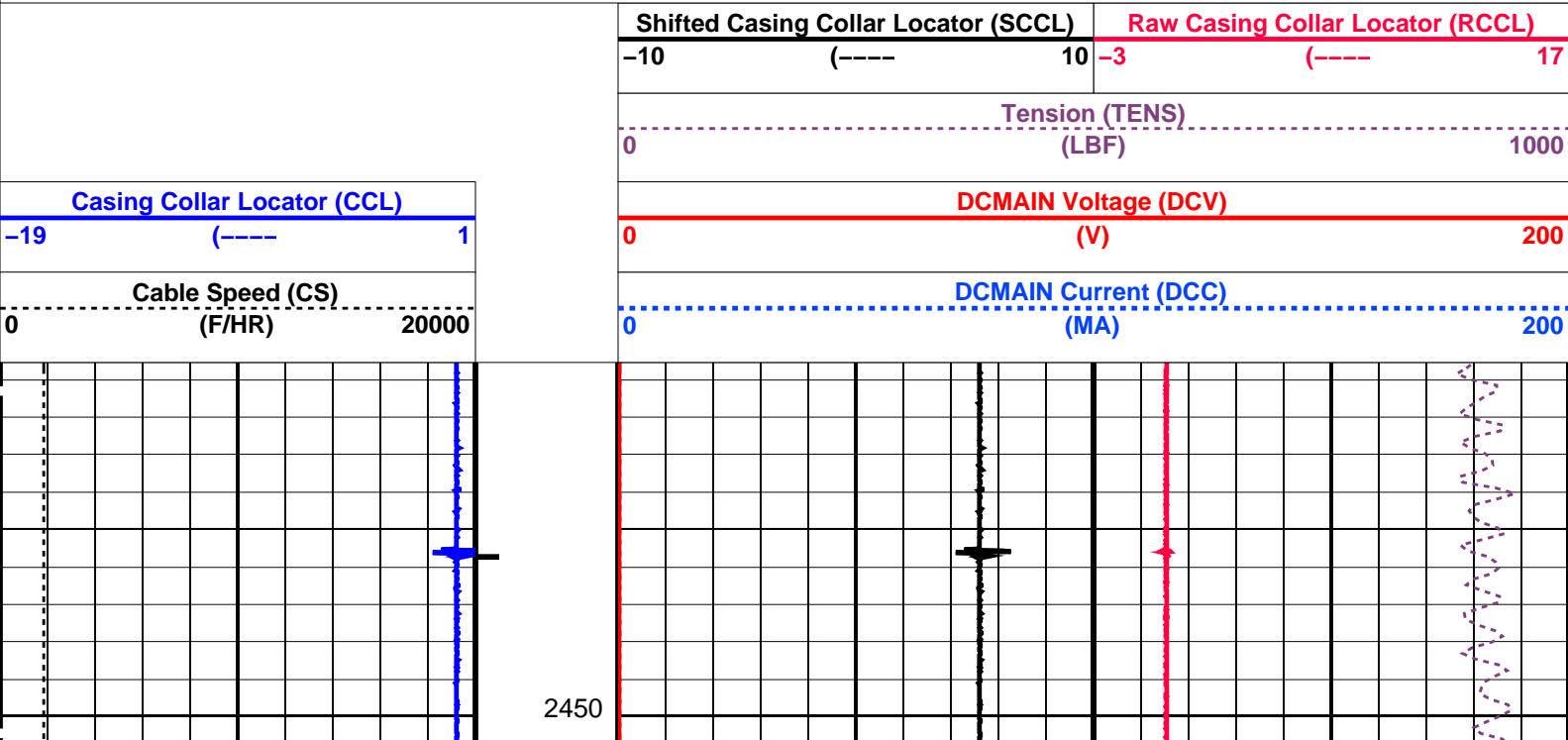
Output DLIS Files			
DEFAULT	PERFO_074LUP	FN:22    PRODUCER	16-Sep-2007 15:24    2484.9 M    2440.5 M

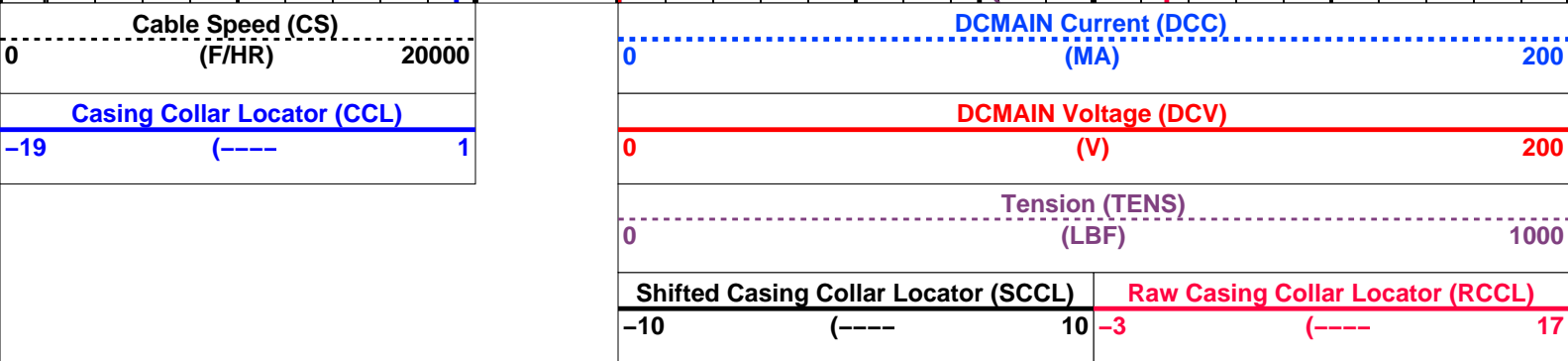
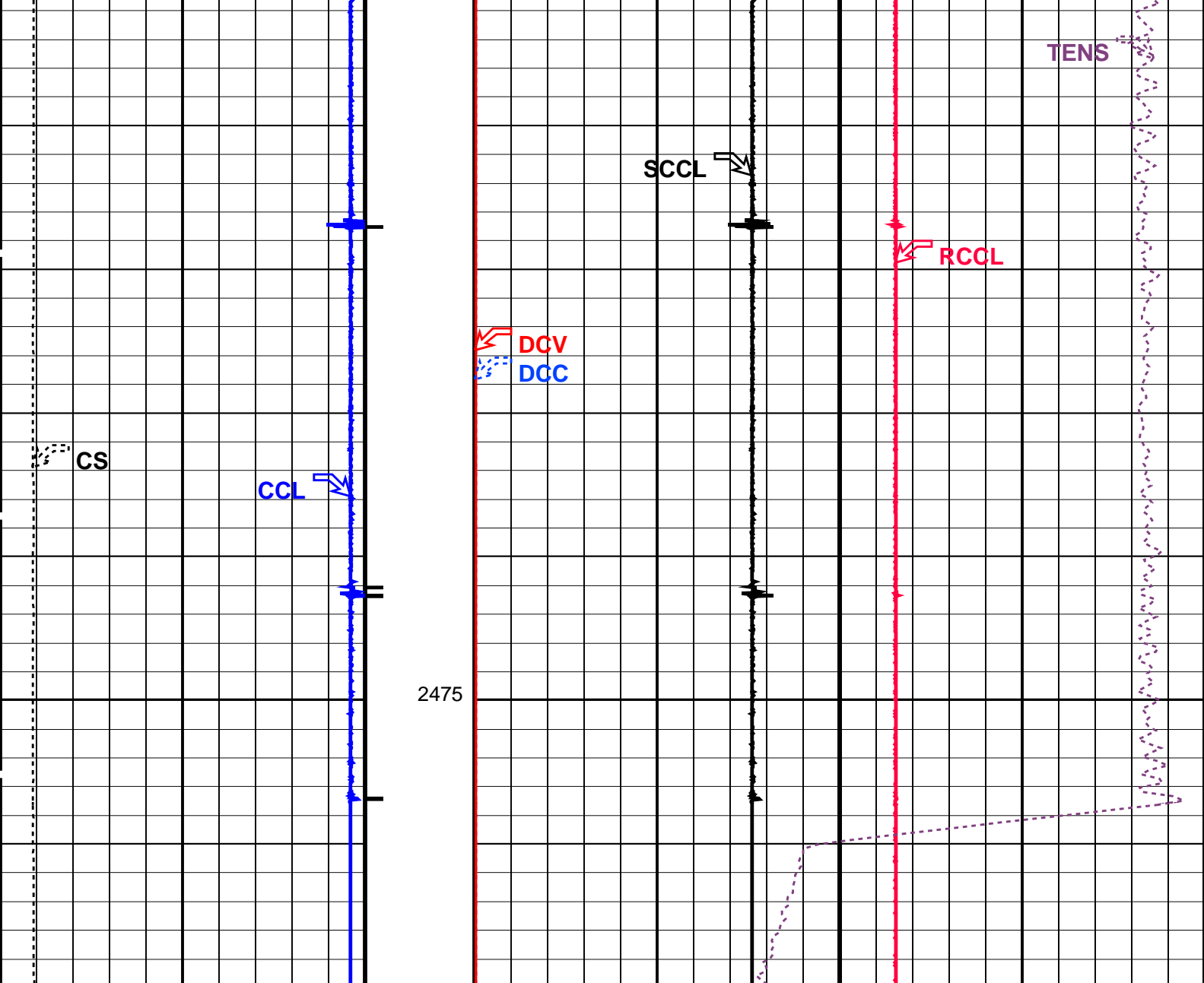
OP System Version: 14C0-302			
MCM			
SHM_GUN	14C0-302	CCL-L	14C0-302

PIP SUMMARY

Time Mark Every 60 S

Casing Collars





PIP SUMMARY

Time Mark Every 60 S

Casing Collars

Parameters		
DLIS Name	Description	Value
CCLD	CCL-L: Casing Collar Locator	12 IN
CCLT	CCL reset delay	0.3 V
	CCL Detection Level	

SHM\_GUN14C0-302CCL-L14C0-302

Output DLIS Files

DEFAULTPERFO\_074LUPFN:22PRODUCER16-Sep-2007 15:24

Schlumberger

2.13" Dummy Plug Pass  
09-Sep-2007

MAXIS Field Log

Company: Esso Australia Pty Ltd. Well: A-14a

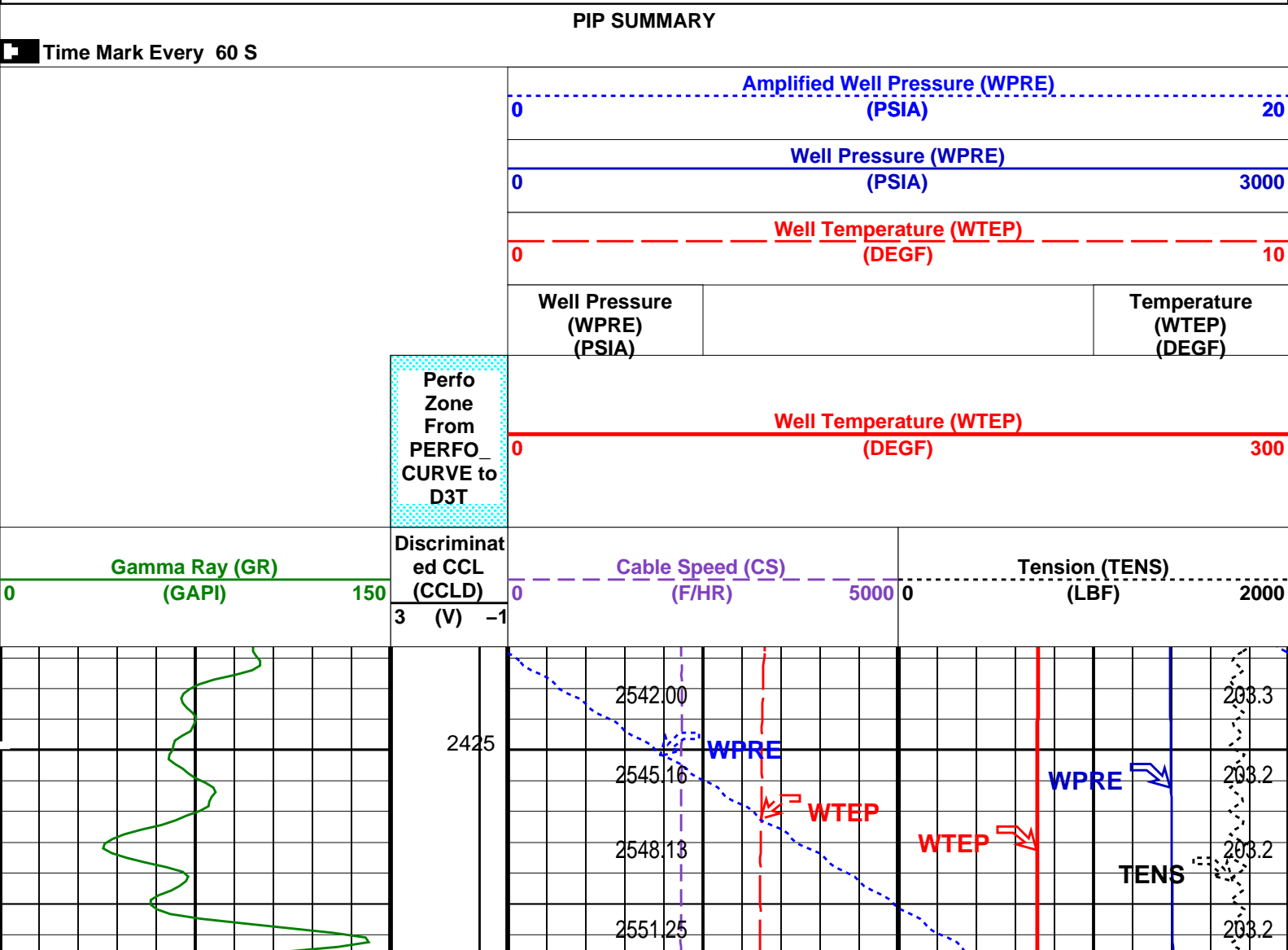
Output DLIS Files

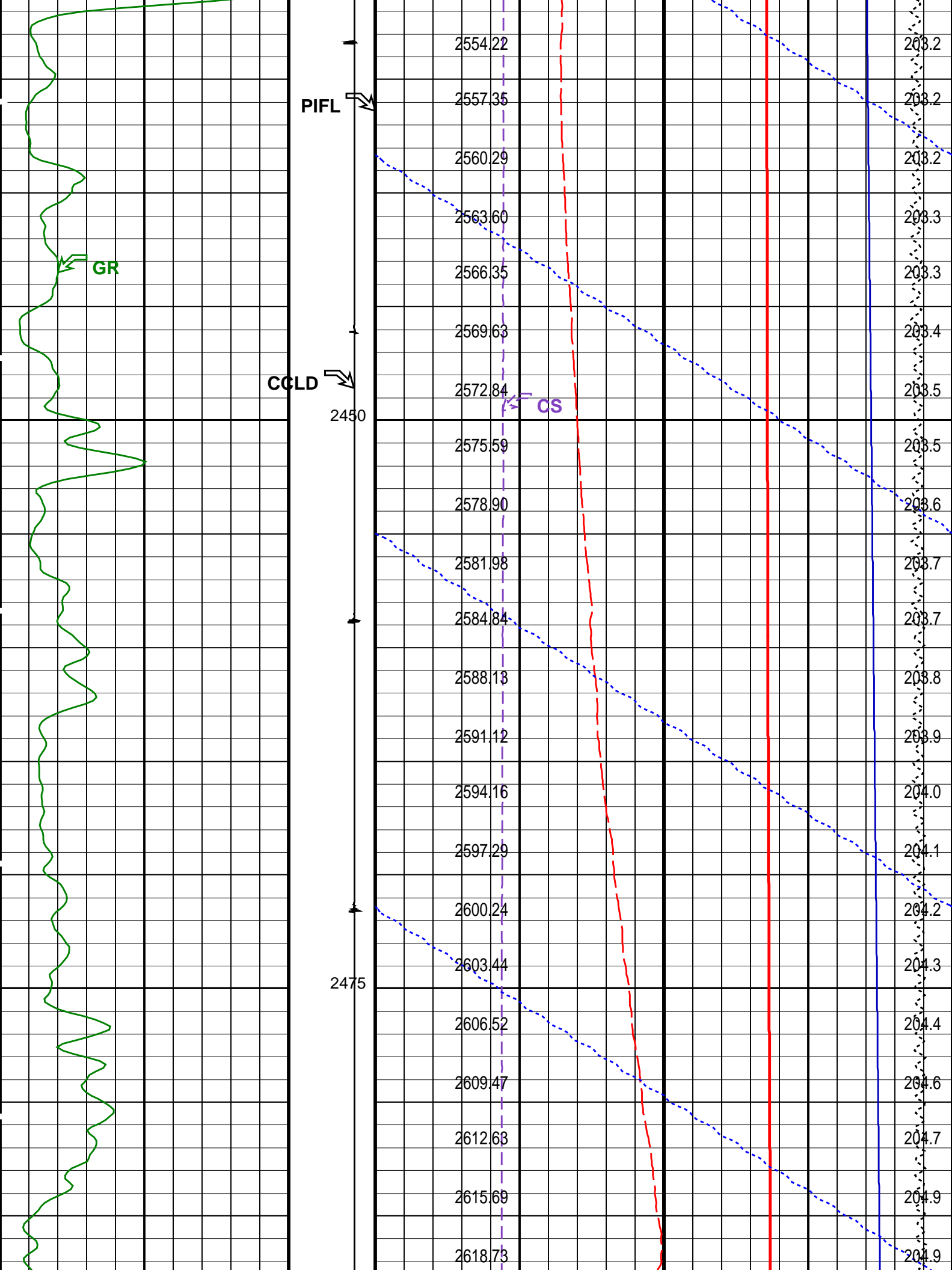
DEFAULTPSP\_064LUPFN:12PRODUCER09-Sep-2007 13:48

OP System Version: 14C0-302

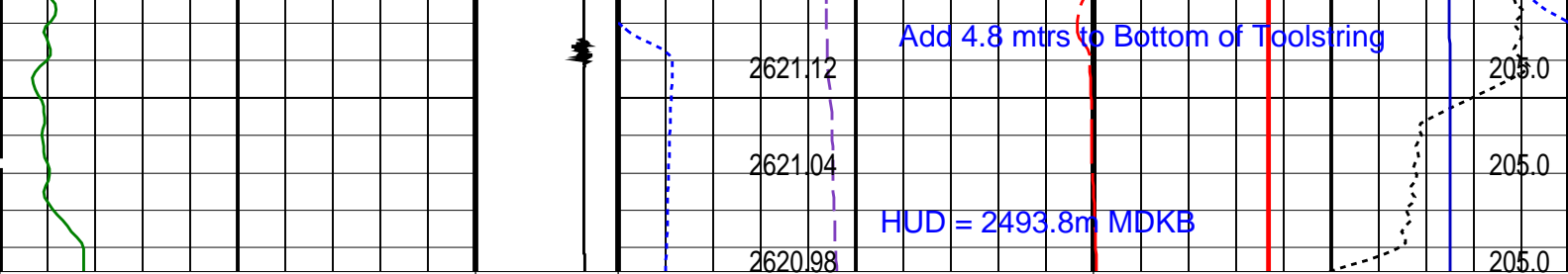
MCM

PSPT-A/B14C0-302









Gamma Ray (GR) (GAPI)		Discriminat ed CCL (CCLD)	Cable Speed (CS) (F/HR)		Tension (TENS) (LBF)	
0	150	3 (V) -1	0	5000	0	2000

Perfo Zone From PERFO_ CURVE to D3T	Well Temperature (WTEP)		
	0	(DEGF)	300
	Well Pressure (WPRE) (PSIA)		Temperature (WTEP) (DEGF)
	Well Temperature (WTEP)		
	0	(DEGF)	10
	Well Pressure (WPRE)		
	0	(PSIA)	3000
Amplified Well Pressure (WPRE)			
0	(PSIA)	20	

#### PIP SUMMARY

Time Mark Every 60 S

Format: PSP\_1 Vertical Scale: 1:200

Graphics File Created: 09-Sep-2007 13:48

OP System Version: 14C0-302  
MCM

PSPT-A/B 14C0-302

#### Output DLIS Files

DEFAULT PSP\_064LUP FN:12 PRODUCER 09-Sep-2007 13:48

Company: Esso Australia Pty Ltd.

Schlumberger

Well: A-14a  
Field: Bream A  
Rig : Prod4 / Crane  
Country: Australia

2 1/8" Powerjet Perforation  
7"HPI Plug  
Setting Record