

Company: Esso Australia Pty Ltd.

Well: A-19a
Field: Bream A
Rig : Prod4 / Vea
Country: Australia

2" HSD Powerjet
Omega Perforation
Record

Prod4 / Vea
Bream A
Gippsland
A-19a
Esso Australia Pty Ltd.

LOCATION			
Gippsland		Elev.:	K.B. 32.4 m
Basin			G.L. -59 m
Bass Strait			D.F. 32.2 m
Permanent Datum:	M.S.L.	Elev.:	0 m
Log Measured From:	K.B.	32.2 m	above Perm. Datum
Drilling Measured From:	K.B.		
State:	Max. Well Deviation	Longitude	Latitude
Victoria	64 deg	147 46'19.9684" E	38 29'58.8925"S

Logging Date	6-Jul-2007			
Run Number	One			
Depth Driller	2708 m			
Schlumberger Depth	2625 m			
Bottom Log Interval	2625 m			
Top Log Interval	2575 m			
Casing Fluid Type	Production Fluids			
Salinity				
Density				
Fluid Level	1185 m			
BIT/CASING/TUBING STRING				
Bit Size	8.500 in			
From				
To				
Casing/Tubing Size	7.000 in			
Weight	26 lbm/ft			
Grade	L-80			
From	12.9 m			
To	2799 m			
Maximum Recorded Temperatures	208 degf			
Logger On Bottom	6-Jul-2007		Time	
Unit Number	Location		20:00	
Recorded By	G Wright.			
Witnessed By	G Rimmer.			

			Run 1
Oil Density			
Water Salinity			
Gas Gravity			
Bo			
Bw			
1/Bg			
Bubble Point Pressure			
Bubble Point Temperature			
Solution GOR			
Maximum Deviation			64 deg
CEMENTING DATA			
Primary/Squeeze			Primary
Casing String No			
Lead Cement Type			
Volume			
Density			
Water Loss			
Additives			
Tail Cement Type			
Volume			
Density			
Water Loss			
Additives			
Expected Cement Top			
Logging Date			
Run Number			
Depth Driller			
Schlumberger Depth			
Bottom Log Interval			
Top Log Interval			
Casing Fluid Type			
Salinity			
Density			
Fluid Level			
BIT/CASING/TUBING STRING			
Bit Size			
From			
To			
Casing/Tubing Size			
Weight			
Grade			
From			
To			
Maximum Recorded Temperatures			
Logger On Bottom		Time	
Unit Number	Location		
Recorded By			
Witnessed By			

DEPTH SUMMARY LISTING

Date Created: 6-JUL-2007 18:53:42

Depth System Equipment

Depth Measuring Device		Tension Device		Logging Cable	
Type:	IDW-EB	Type:	PSDS/OSDS	Type:	2-32ZT
Serial Number:	6373	Serial Number:	325357	Serial Number:	24425
Calibration Date:	04-Jan-2007	Calibration Date:	10-Jun-2007	Length:	6363.00 M
Calibrator Serial Number:	9	Calibrator Serial Number:	1174	Conveyance Method: Wireline Rig Type: Offshore_Fixed	
Calibration Cable Type:	2-32ZT	Calibration Gain:	0.92		
Wheel Correction 1:	-2	Calibration Offset:	199.00		
Wheel Correction 2:	-4				

Depth Control Parameters

Log Sequence:	Subsequent Log In the Well
Reference Log Name:	Bream A19 Petrophysical Analysis
Reference Log Run Number:	
Reference Log Date:	

Depth Control Remarks

1. IDW-EB 6373 used as primary depth control.
2. Z-chart used as back-up.

DISCLAIMER

THE USE OF AND RELIANCE UPON THIS RECORDED-DATA BY THE HEREIN NAMED COMPANY (AND ANY OF ITS AFFILIATES, PARTNERS, REPRESENTATIVES, AGENTS, CONSULTANTS AND EMPLOYEES) IS SUBJECT TO THE TERMS AND CONDITIONS AGREED UPON BETWEEN SCHLUMBERGER AND THE COMPANY, INCLUDING: (a) RESTRICTIONS ON USE OF THE RECORDED-DATA; (b) DISCLAIMERS AND WAIVERS OF WARRANTIES AND REPRESENTATIONS REGARDING COMPANY'S USE OF AND RELIANCE UPON THE RECORDED-DATA; AND (c) CUSTOMER'S FULL AND SOLE RESPONSIBILITY FOR ANY INFERENCE DRAWN OR DECISION MADE IN CONNECTION WITH THE USE OF THIS RECORDED-DATA.

OTHER SERVICES1
OS1: None











REMARKS: RUN NUMBER 1
Log correlated to ExxonMobil composite supplied with program.
Maximum well deviation = 64 degrees at 2742m MDKB.
2" HSD Powerjet Omega used for this perforation.
Perforation zone 2612m to 2615.5m MDKB.
Before perforation SBHP : 2830 psia.
SBHT : 207 degf.
After Perforation SBHP : 2909 pdia.

SBHT : 208 degf.

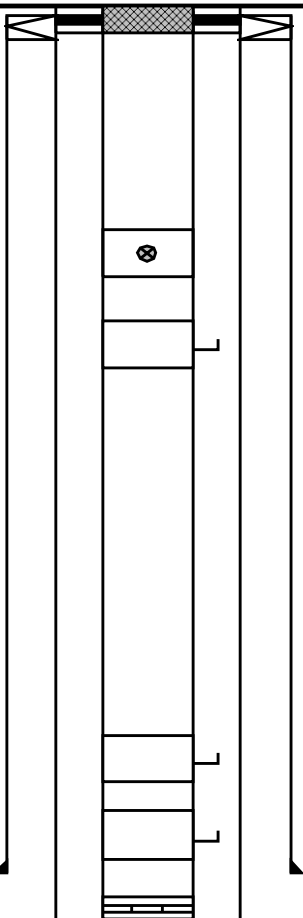
Well was not flowed for initial clean up period
due to toolstring being inside the tubing and the danger of being
blown up the hole.
Crew : Jake Annear & Chris Shiells.

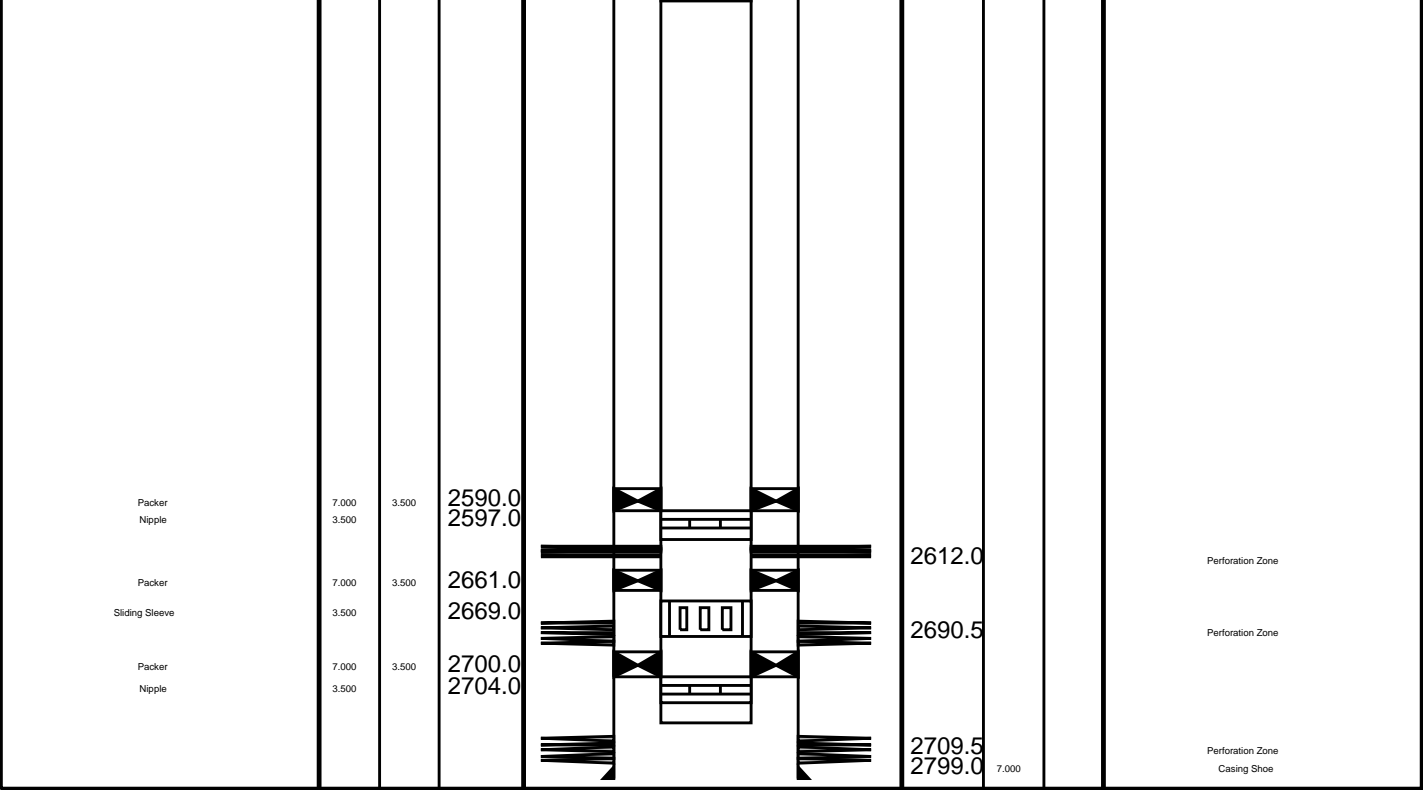
RUN 1		
SERVICE ORDER #:	AusI7484941	
PROGRAM VERSION:	14C0-302	
FLUID LEVEL:	1185 m	
LOGGED INTERVAL	START	STOP

EQUIPMENT DESCRIPTION

RUN 1		
SURFACE EQUIPMENT		
MWPM-AA 3000		
DOWNHOLE EQUIPMENT		
AH-Swbs-b 761		13.73
AH-Swbs-b 763		13.02
AH-Swbs-b 762		12.31
MH-Swhs-b 726		11.60
MWPG-AA 24029 MWGH-AA 69	MWPG GR 	11.26 2.41
MWPH-AA 74 MWPS-AA 74		10.29
	CCL SMWP Pres SMWP Temp Tension 	TOOL ZERO
AH-Wpsa-ba 4002		7.47 7.47
AH-Esic-cb 26031944		6.76
AH 2"HSD Powerjet Omega Cup 1		6.32

MAXIMUM STRING DIAMETER 2.00 IN
MEASUREMENTS RELATIVE TO TOOL ZERO
ALL LENGTHS IN METERS

Production String	(in)		(m)	Well Schematic	(m)		(m)	Casing String
	OD	ID			MD	MD		
Tubing	3.500		11.1		12.7	7.000		Casing String Liner Hanger
Tubing Hanger	7.000	3.500	10.0		12.7	10.750	7.000	
Shut-in Valve	3.500		444.0					
Gas Lift Mandrel	3.500		598.0					
Gas Lift Mandrel	3.500		1283.0					
Gas Lift Mandrel	3.500		1331.0					
Nipple	3.500		1347.0					
						1433.5	10.750	Casing Shoe



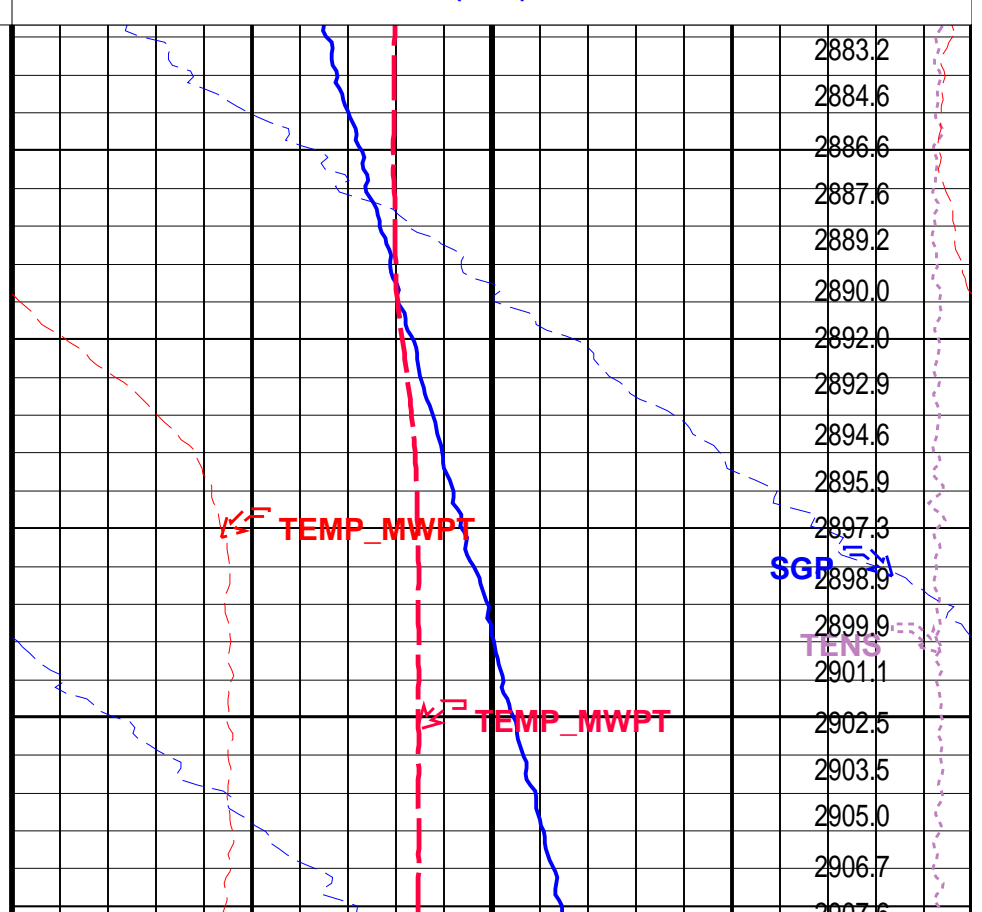
Job Event Summary

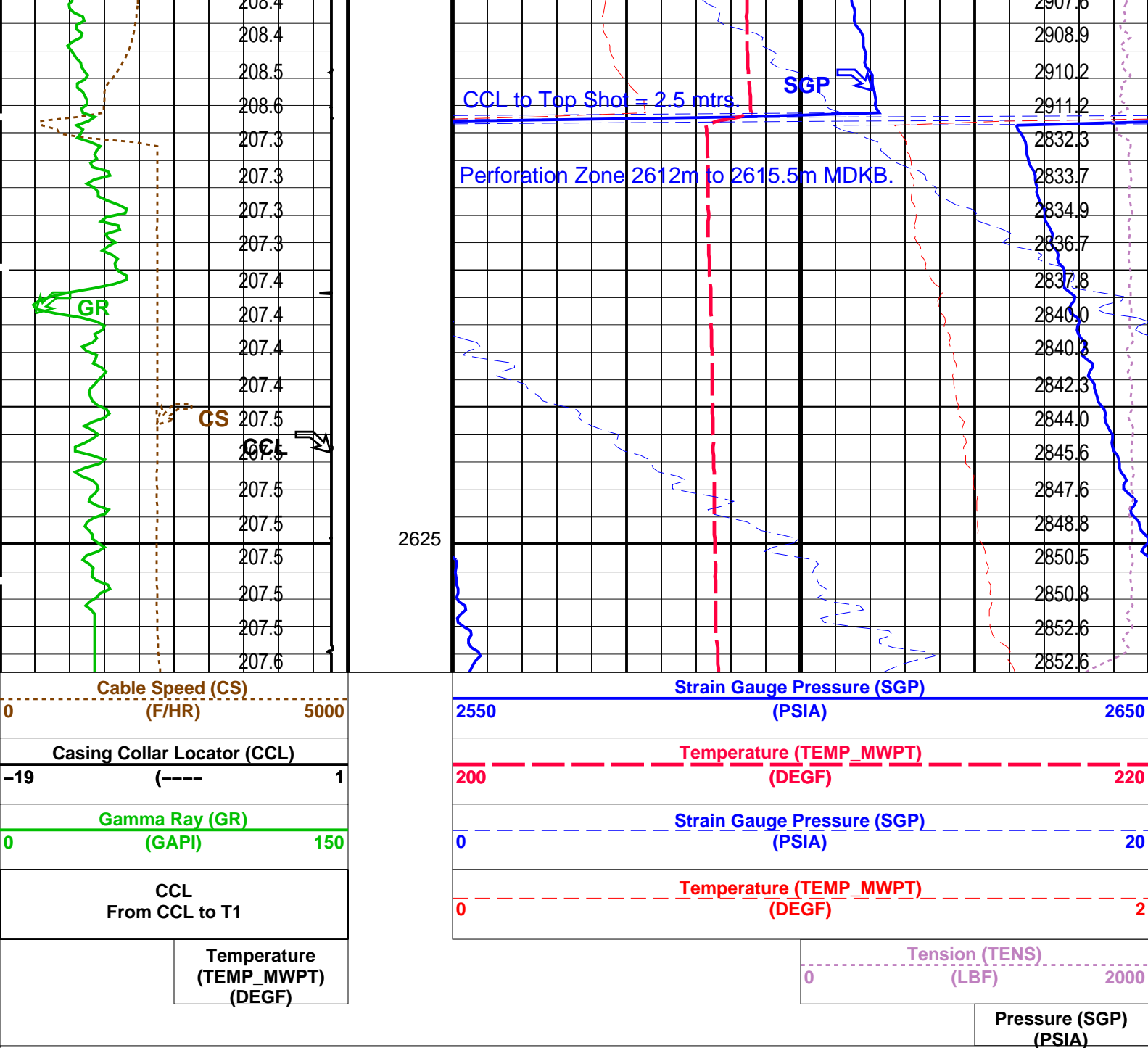
MAXIS Field Log

Schlumberger Job Event Summary

Time	Elapsed Time	Depth (M)	File
Log Pass (down)	6-Jul-2007 19:59 000:19	841.1 - 2625.4	PERFO_008LDP
Log Pass (up)	6-Jul-2007 20:18 000:04	2627.8 - 2580.4	PERFO_009LUP
Log Pass (up)	6-Jul-2007 20:29 000:13	2629.7 - 2581.7	PERFO_011LUP
Station Log	6-Jul-2007 20:33 000:05	2609.5 - 0.8	PERFO_012LTP

TIME	DEGF	PSIA
2340.0	208.57	2909.919
2320.0	208.61	2908.945
2300.0	208.64	2907.677
2280.0	208.68	2905.434
2260.0	208.73	2902.709
2240.0	208.80	2899.214
2220.0	208.91	2894.682
2200.0	209.16	2888.484
2180.0	209.63	2880.974
2160.0	210.90	2871.710
2140.0	214.81	2860.044





PIP SUMMARY

Time Mark Every 60 S

Parameters

DLIS Name	Description	Value
MWPT-CA: MEASUREMENT WHILE PERFORATING TOOL		
DEVI_FL_CORR	Deviation Angle for Flow Line Correction	0 DEG
FLD	Flow Line Density	1 G/C3
MWPT_NULL_SOURCE	MWPT NULL Temperature Source	TEMS
MWPT_NULL_TEMP	MWPT NULL Temperature	0.0 DEGC

Format: MWP Vertical Scale: 1:200

Graphics File Created: 06-Jul-2007 20:29

OP System Version: 14C0-302
MCM

MWP_GUN 14C0-302 MWPT-CA 14C0-302
MWGT-AA 14C0-302

Output DLIS Files

DEFAULT PERFO_011LUP FN:10 PRODUCER 06-Jul-2007 20:29



Gun Correlation Pass

MAXIS Field Log

Company: Esso Australia Pty Ltd. Well: A-19

Input DLIS Files

DEFAULT PERFO_009LUP FN:8 PRODUCER 06-Jul-2007 20:18 2627.8 M 2580.4 M

Output DLIS Files

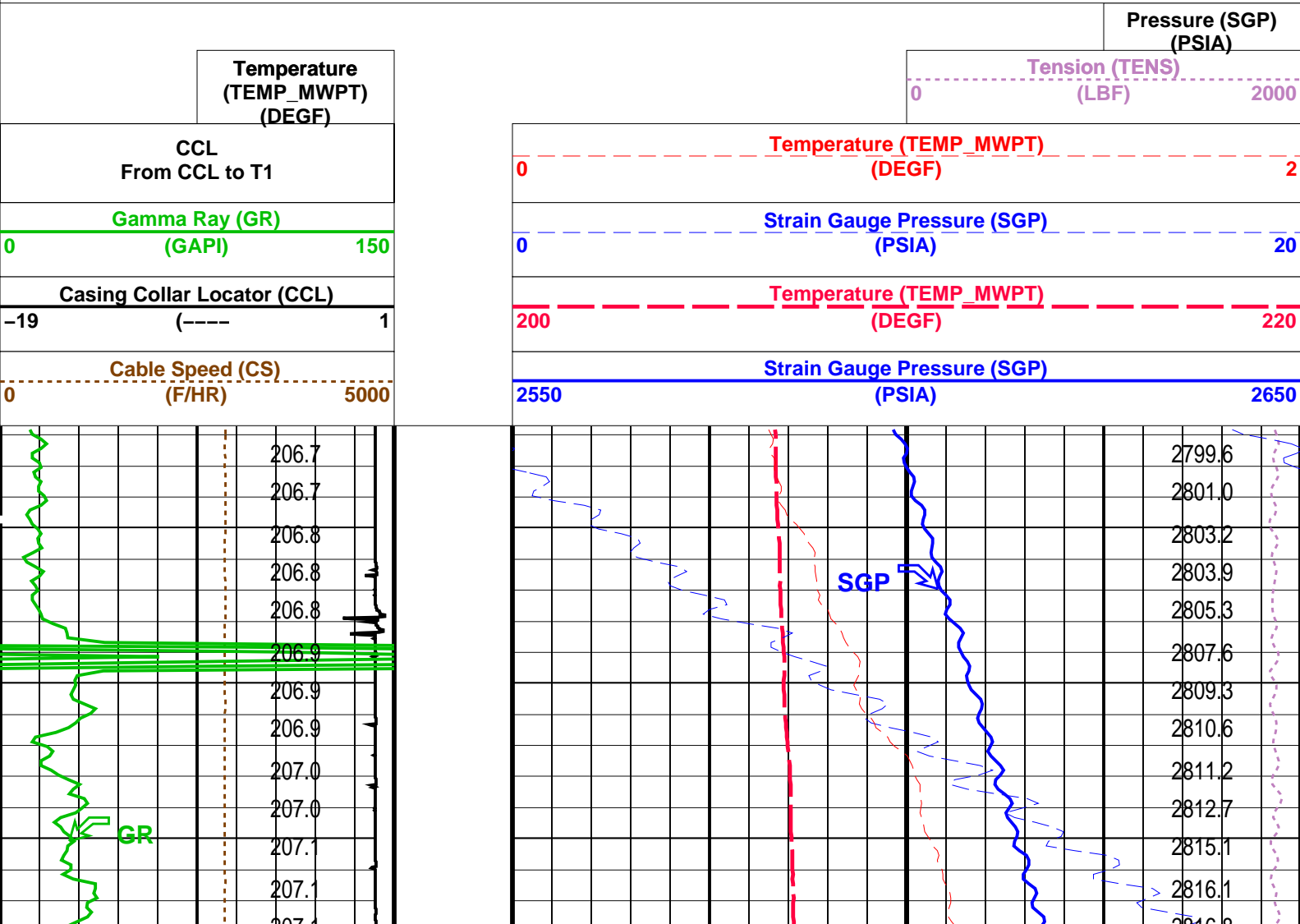
DEFAULT PERFO_010PUP FN:9 PRODUCER 06-Jul-2007 20:25 2628.6 M 2581.7 M

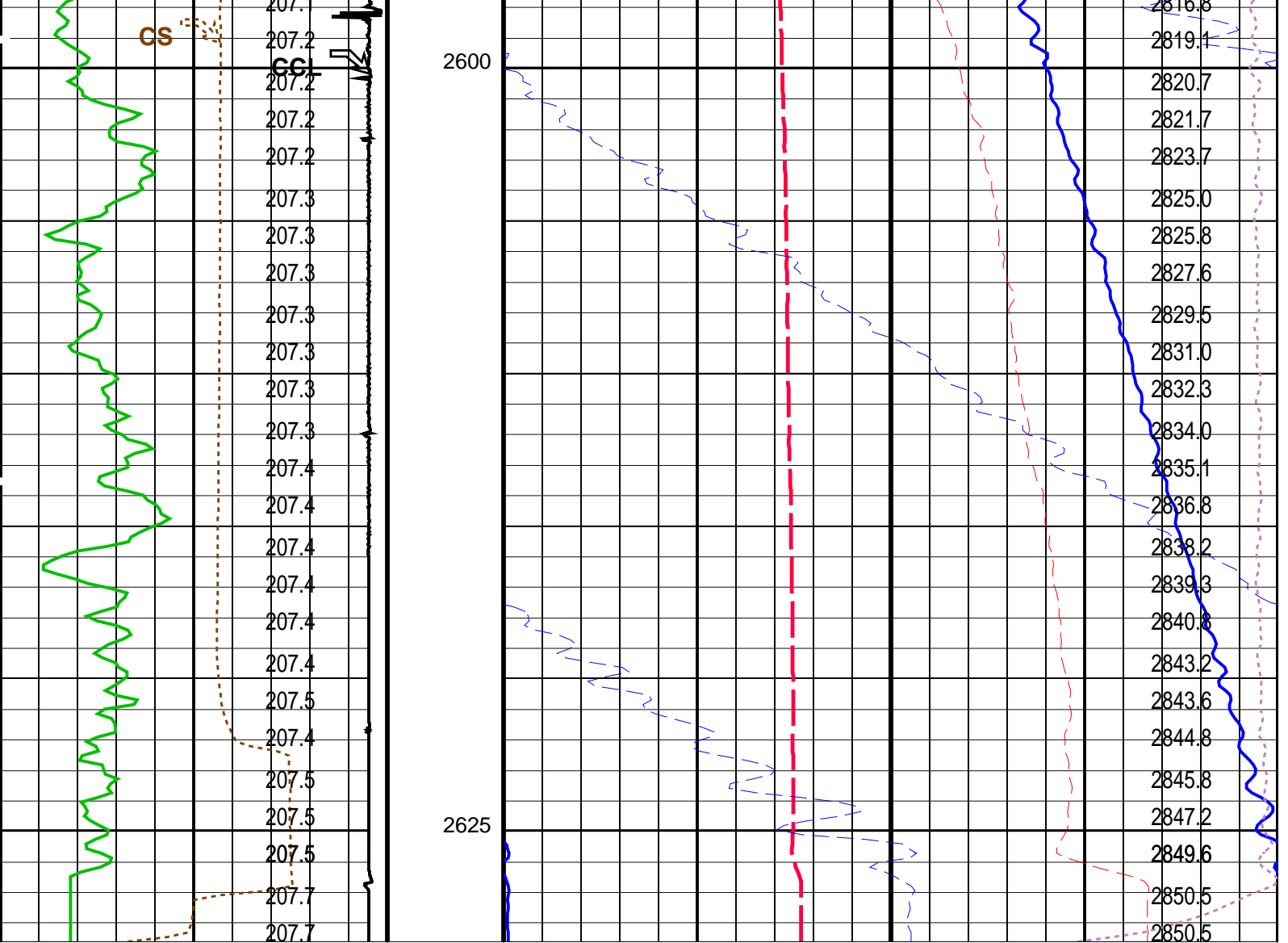
OP System Version: 14C0-302
MCM

MWP_GUN 14C0-302 MWPT-CA 14C0-302
MWGT-AA 14C0-302

PIP SUMMARY

Time Mark Every 60 S





Cable Speed (CS)	
(F/HR)	
0	5000
Casing Collar Locator (CCL)	
(----)	
-19	1
Gamma Ray (GR)	
(GAPI)	
0	150
CCL	
From CCL to T1	
Temperature	
(TEMP_MWPT)	
(DEGF)	

Strain Gauge Pressure (SGP)	
(PSIA)	
2550	2650
Temperature (TEMP_MWPT)	
(DEGF)	
200	220
Strain Gauge Pressure (SGP)	
(PSIA)	
0	20
Temperature (TEMP_MWPT)	
(DEGF)	
0	2
Tension (TENS)	
(LBF)	
0	2000

Pressure (SGP)
(PSIA)

PIP SUMMARY

Time Mark Every 60 S

Parameters

DLIS Name	Description	Value	
MWPT-CA: MEASUREMENT WHILE PERFORATING TOOL			
DEVI_FL_CORR	Deviation Angle for Flow Line Correction	0	DEG
FLD	Flow Line Density	1	G/C3
MWPT_NULL_SOURCE	MWPT NULL Temperature Source	TEMS	
MWPT_NULL_TEMP	MWPT NULL Temperature	0.0	DEGC
System and Miscellaneous			
DO	Depth Offset for Playback	0.7	M
PP	Playback Processing	NORMAL	

OP System Version: 14C0-302			
MCM			
MWP_GUN	14C0-302	MWPT-CA	14C0-302
MWGT-AA	14C0-302		

Input DLIS Files					
DEFAULT	PERFO_009LUP	FN:8	PRODUCER	06-Jul-2007 20:18	2627.8 M 2580.4 M
Output DLIS Files					
DEFAULT	PERFO_010PUP	FN:9	PRODUCER	06-Jul-2007 20:25	

Company:	Esso Australia Pty Ltd.	Schlumberger
Well:	A-19a	
Field:	Bream A	
Rig :	Prod4 / Vea	
Country:	Australia	
2" HSD Powerjet Omega Perforation Record		